



YOUR GUIDE TO SOUTH COUNTY AIR QUALITY



HOW TO STAY INFORMED ON THE AIR QUALITY IN YOUR NEIGHBORHOOD



SLOCleanAir.org



[@SLOCleanAir](https://twitter.com/SLOCleanAir)



805-781-5912



info@SLOCleanAir.org



3433 Roberto Court
San Luis Obispo, CA 93401



SOUTH COUNTY COMMUNITY MONITORING PROJECT

The SLO County APCD's air monitoring program has documented elevated particulate levels on the Nipomo Mesa for over twenty years. Recent studies performed by the APCD in the area have shown the source of the elevated particulate matter (PM) pollution to be windblown dust from the open sand areas of the Oceano Dunes State Vehicular Recreation Area (SVRA). To better define the extent of the dust plume on the Nipomo Mesa and Oceano, a community monitoring study was conducted in the spring of 2012.

Study Details

From March to May 2012, twenty three air quality monitors were deployed throughout the Nipomo Mesa and Oceano to gather data to better define the path and extent of the dust plume. The study focused on two primary impact areas in the South County:

- Nipomo Mesa neighborhoods directly downwind of the dunes; and,
- Oceano neighborhoods adjacent to Pier Ave and the beach.

The data collected provides information to more precisely define the air quality forecast zones for those communities and enhance the ability of local residents to determine if or when protective actions might be needed on high PM days.

Nipomo Mesa Study Results

During strong northwest winds, dust events typically produce plume characteristics on the western portion of the Nipomo Mesa as shown in the map to the right. The highest PM concentrations were found to be in the region directly downwind from the main part of the SVRA. As you move further inland, or to the north or south of the SVRA, the PM concentrations decreased.

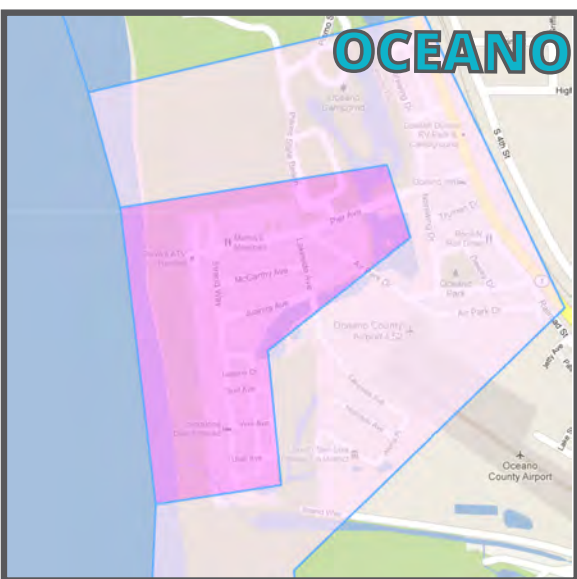
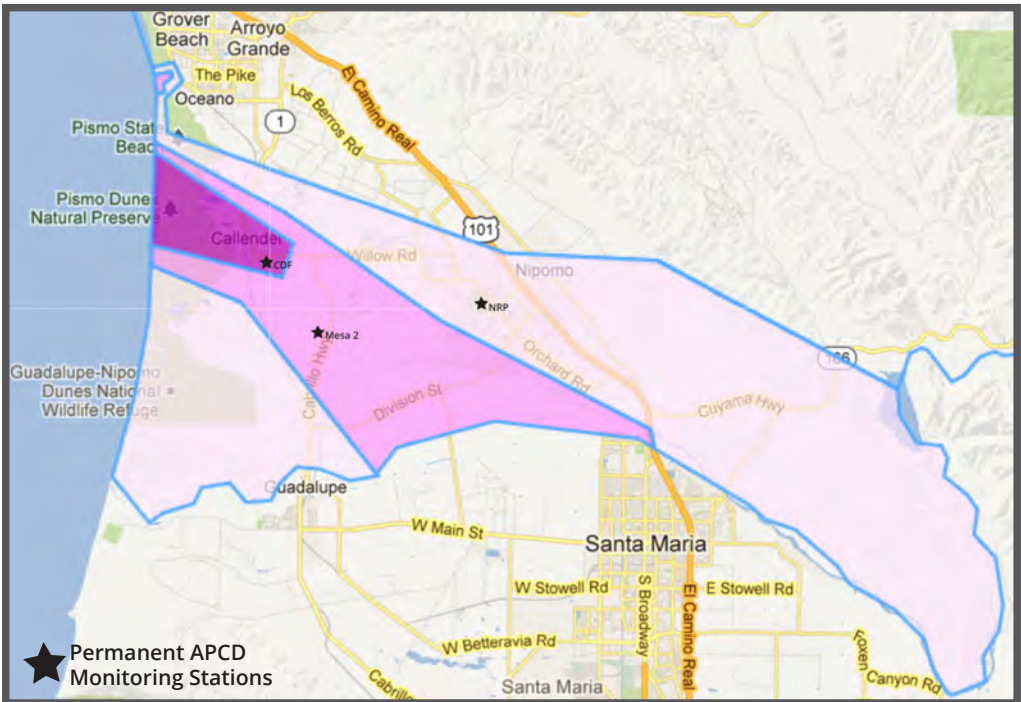
Oceano Area Study Results

Data gathered from the Oceano area showed elevated particulate concentrations are present during strong northwesterly winds at monitors in close proximity to any area of disturbed open sand. These sand areas include the beach as well as Pier Avenue where sand commonly is tracked out of the SVRA by vehicles exiting the park.

Study results were used to update the air quality forecast zones for the Nipomo Mesa and Oceano. Individuals who live, work or play in these neighborhoods should use the data from the associated permanent monitoring station as a guide for local air quality conditions.



NIPOMO MESA



AIR QUALITY FORECAST ZONES IN THE SOUTH COUNTY

- It is important to note that each wind-blown dust event has different characteristics, so the forecast zones on these maps are based on the estimated average magnitude of the particulate concentrations observed in each area.
- The borders of each zone are approximate and not meant to be a rigid boundary. PM levels adjacent to the boundaries are likely to be very similar.
- The public should use the air quality forecasts as a guide to help plan their outdoor activities and protect their health during blowing dust episodes.

LEGEND

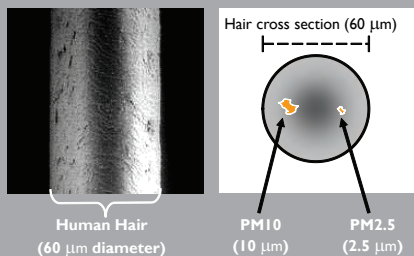
- Dark Pink - CDF Monitoring Station**
- Medium Pink - Mesa 2 Monitoring Station**
- Light Pink - NRP Monitoring Station**

PARTICULATE MATTER & YOUR HEALTH

WHAT IS PARTICULATE MATTER?

Airborne particulate matter is a complex mixture of extremely small particles that may contain a number of harmful components, including acids, organic chemicals, metals and soil or dust particles.

The images to the right show the size of PM10 and PM2.5 compared to a human hair.



MINIMIZE YOUR RISK

Keep watch on your local air quality conditions to determine the best time of day for you to exercise and enjoy the outdoors.

Particle pollution can vary by season and location, with the highest levels when dust blows during high wind events.

HOW TO STAY INFORMED

DAILY FORECASTS AVAILABLE

VISIT the APCD website and click "Today's Air Quality"

SIGN UP to receive alerts via email or text through Enviroflash.info

FOLLOW the APCD on Twitter (SLOCleanAir) or see the live feed on our website

CALL 805-781-4390 to hear an updated recording of the air quality in your area

READ the local newspapers. Several include daily forecasted values for your area.



GOOD

→ 50

MODERATE

51 → 100

UNHEALTHY
FOR
SENSITIVE
GROUPS

101 → 150

UNHEALTHY

151 →

The Air Quality Index (AQI) is a color-coded, user-friendly way to report daily air quality. It tells you how clean or unhealthy your air is, and what associated health effects might be a concern.