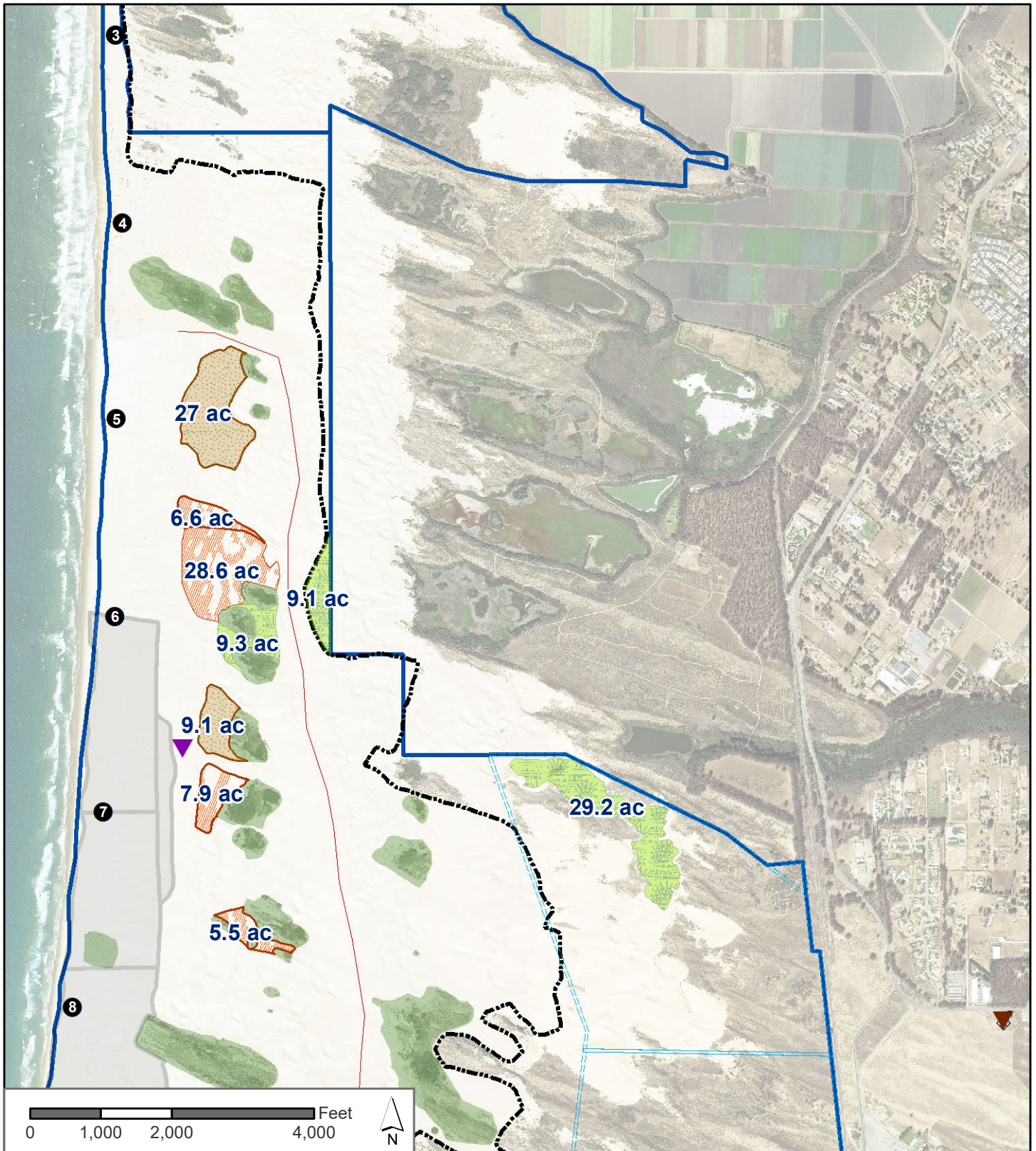














Exhibit 1



Source: CDPR, Desert Research Institute

7/25/2019

-  Pre-SOA vegetation project (2014 and 2017)
-  Initial SOA wind fencing projects
-  Initial SOA straw bales/restoration
-  Existing fenced vegetation islands (186 acres)
- Wind monitoring towers**
-  CDF
-  S1
-  Phillips 66 Lease area
-  Sand Highway, approx.
-  Open riding and camping area boundary fence
-  Marker post
-  Nesting enclosure
-  Park boundary



SOA Dust Control Measures
Oceano Dunes SVRA 2019

Exhibit 2



Source: CDPR, Desert Research Institute

- 2018/2019 supplemental restoration (8.2 acres)
- Initial SOA wind fencing projects
- Initial SOA straw bales/restoration
- Pre-SOA vegetation project (2014 and 2017)
- Existing fenced vegetation islands (186 acres)
- Sand Highway, approx.
- Open riding and camping area boundary fence
- Park boundary

7/29/2019



2018/19 Supplemental Dust Control Restoration Project

Oceano Dunes SVRA 2019

Exhibit 3: Example 2018 Wind Fence Photographs



Exhibit 3. 2018 wind fencing projects installed at Oceano Dunes SVRA. Partially buried fencing requiring maintenance is visible in the top and lower right photographs.

Exhibit 4: Pier Avenue Trackout Mat



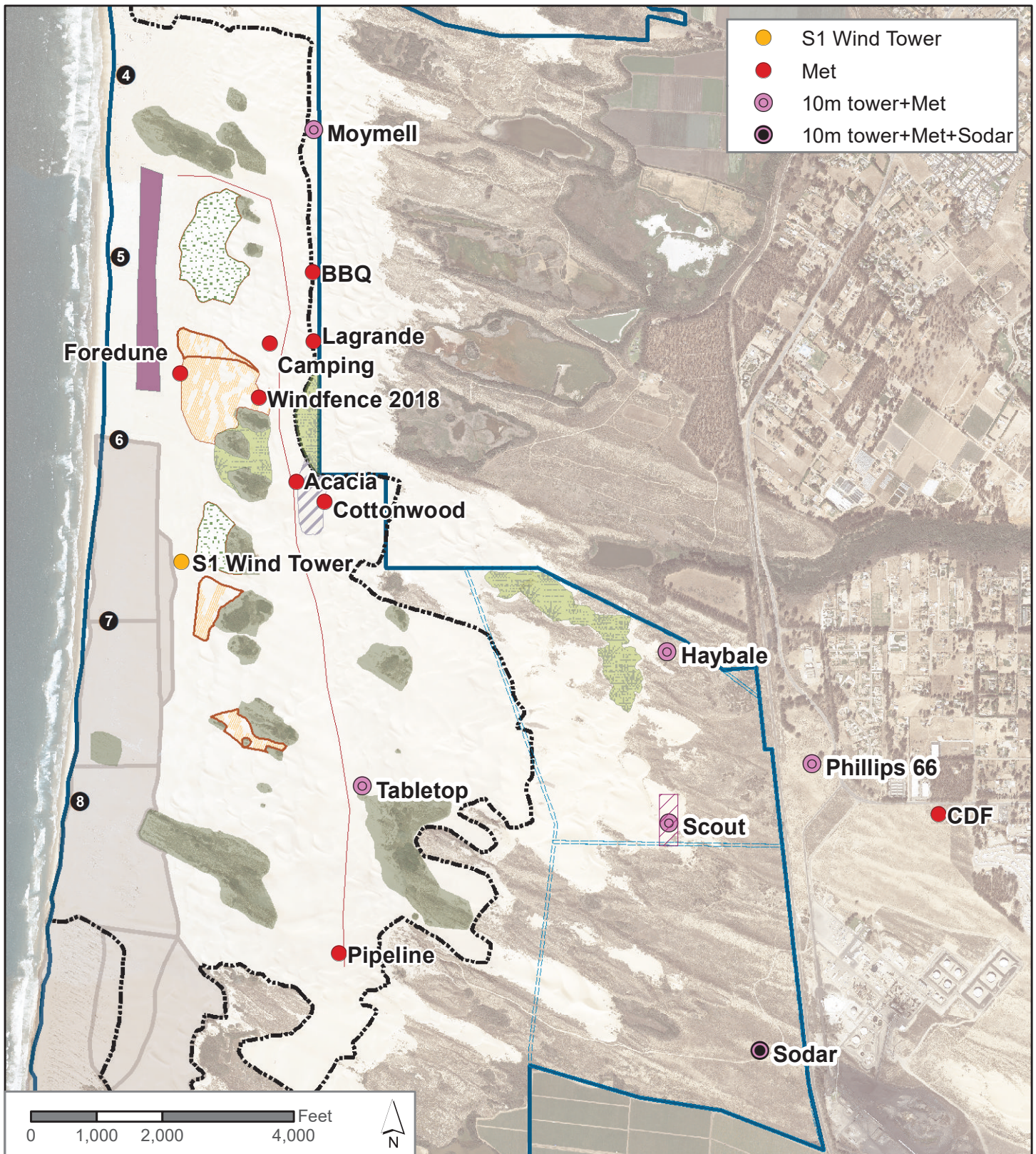
Exhibit 4. Pier Avenue Trackout Mats.

Exhibit 5: Example Monitoring Equipment



Exhibit 5. Example monitoring equipment, including BSNEs (top left), PM₁₀ and wind speed/direction instruments (top right), and meteorological monitoring stations (bottom).

Exhibit 6



- Pre-SOA vegetation project (2014 and 2017)
- Phillips 66 Lease area
- Pre-SOA wind fencing project (removed)
- Sand Highway, approx.
- Initial SOA wind fencing projects
- Marker post
- Initial SOA straw bale projects
- Open riding and camping area boundary fence
- Potential Foredune Dust Control Project
- Nesting enclosure
- Existing fenced vegetation islands (186 acres)
- Park boundary



4/11/2019

Exhibit 7



Source: CDP, Desert Research Institute

- Planned 2019 foredune restoration (21.9 acres)
 - Planned 2019 SOA wind fence restoration
 - Initial SOA wind fencing projects
 - Initial SOA straw bales/restoration
 - Pre-SOA vegetation project (2014 and 2017)
 - Existing fenced vegetation islands (186 acres)
- Wind monitoring towers**
- CDF
 - S1

- Phillips 66 Lease area
- Sand Highway, approx.
- Marker post
- Open riding and camping area boundary fence
- Nesting enclosure
- Park boundary

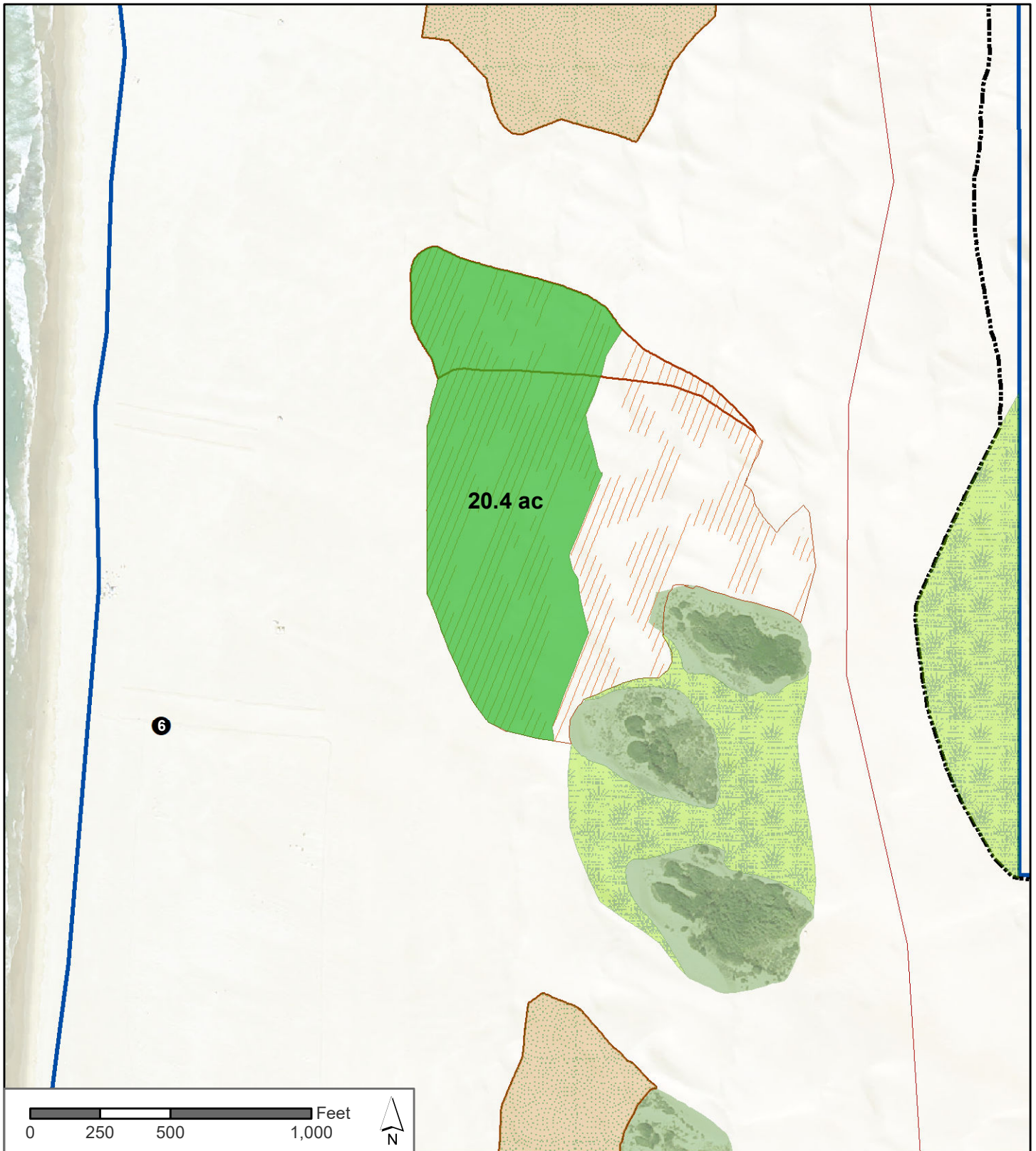
2019/20 SOA Dust Control Vegetation Projects

Oceano Dunes SVRA 2019



7/29/2019

Exhibit 8



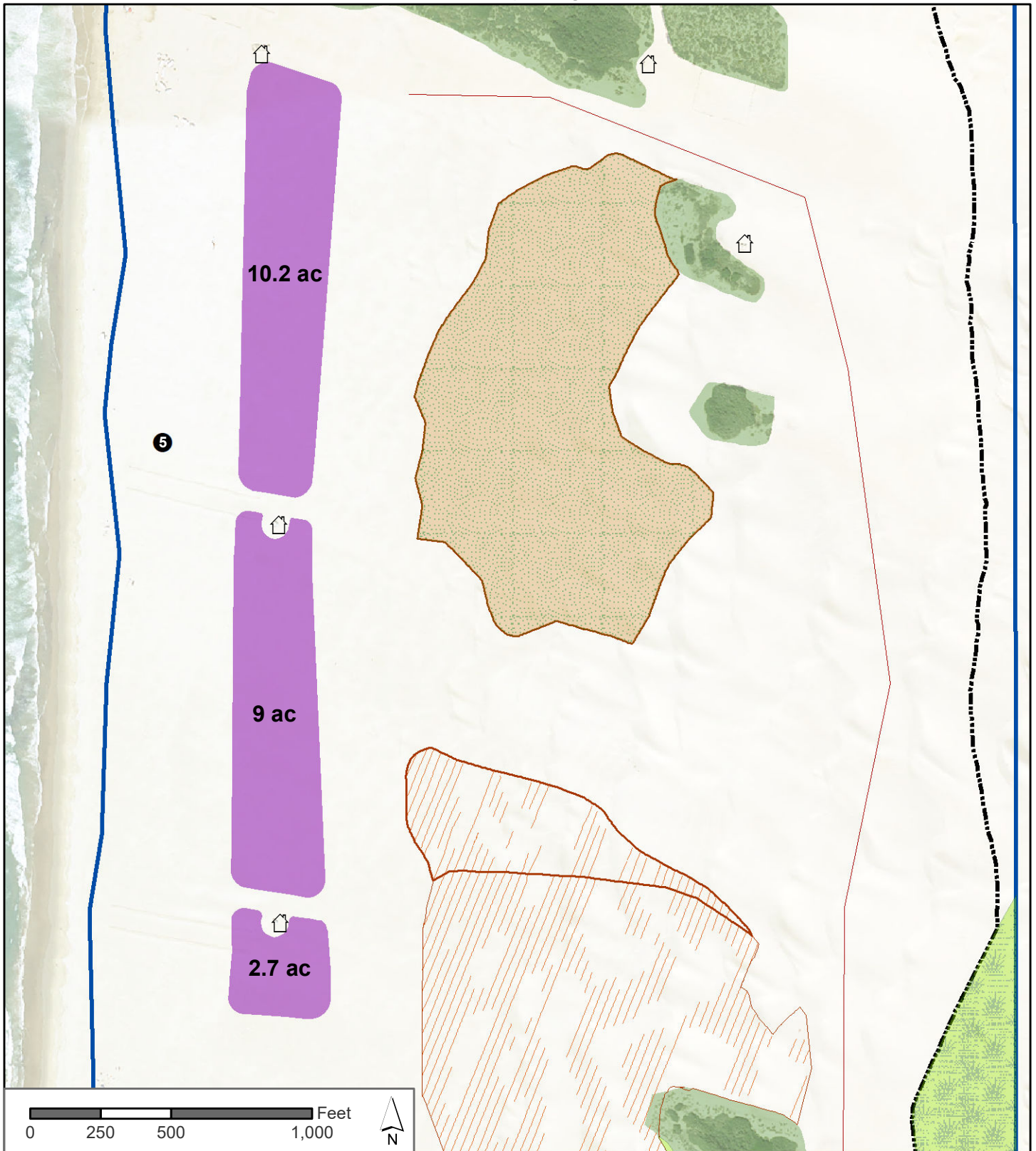
Source: CDPR, Desert Research Institute

7/29/2019

- Planned 2019 SOA wind fence restoration
- Initial SOA wind fencing projects
- Initial SOA straw bales/restoration
- Pre-SOA vegetation project (2014 and 2017)
- Existing fenced vegetation islands (186 acres)
- Sand Highway, approx.
- Marker post
- Open riding and camping area boundary fence
- Park boundary



Exhibit 9



Source: CDPR, Desert Research Institute

- Planned 2019 foredune restoration (21.9 acres)
- Initial SOA wind fencing projects
- Initial SOA straw bales/restoration
- Pre-SOA vegetation project (2014 and 2017)
- Existing fenced vegetation islands (186 acres)

- Vault toilets
- Sand Highway, approx.
- Marker post
- Open riding and camping area boundary fence
- Park boundary

7/29/2019



2019/20 SOA Foredune Installation
Oceano Dunes SVRA 2019