



FINIS®
simplify swimming

OLIVIA SMOLIGA

OLYMPIC GOLD MEDALIST, WORLD CHAMPION, AMERICAN RECORD-HOLDER

2018-2019 product catalog

FINISswim.com

WHAT'S INSIDE?

#TeamFINIS	6
training gear	10
electronics	40
goggles & caps	50
swimwear	64
custom swimwear	74
kids	82
mermaid™ collection	92
accessories	100
pool equipment	106
water polo	114
size charts	118



our mission

We simplify swimming through innovation, high-quality products and a commitment to education.

our vision

We exist to help every person in the world enjoy the water.



WHO WE ARE

californians

The storied sense of adventure and draw to the water is in our blood – our products come to life here, we work here and most importantly, we live here. Located in the Bay Area, we are inspired by the nearby oceans, lunchtime swims and a widespread culture of innovation.

swimmers

We are swimmers, and we get it. Our understanding of swimmers of all abilities comes from within – we represent the full aquatic spectrum, from beginners to Olympians.

coaches

We are proud of our coaching backgrounds and we share a deep-rooted passion for helping athletes and coaches alike. Many of our products are unique, perhaps even strange at first glance, and require an element of education, which we are happy to provide. Whether it is at a swim meet, clinic, or even over the phone, we seize every chance we have to share our knowledge.

inventors

Call us nerdy, but we are obsessed with the fine details of swimming. Our elite team of industrial designers is dedicated to developing the next big thing – but we are not in this alone! We collaborate with an extended family of swimmers and coaches around the world to stay at the forefront of swimming technology. Have a great idea? We invite you to share your thoughts by emailing ideas@FINISinc.com.

do-gooders

Simply put, we believe that everyone deserves the joy of swimming. We work hard to make water safety and competitive swimming more accessible. With the So More Can Swim initiative, a portion of every FINIS goggle purchase is donated to organizations that make swimming more accessible.



Designed in California

WHAT WE DO

WE SIMPLIFY SWIMMING...



For the athlete.

Because we understand that improving technique is the secret to swimming faster, our products help athletes of all abilities master the basics as a means to excellence.

For the coach.

Our products offer coaches a toolkit for instructing and reinforcing the fundamental skills of swimming, both on and off the pool deck.



For the beginners, both young and old.

We make learning to swim more comfortable and fun, because we want everyone to have the chance to enjoy swimming.



For the lifelong swimmers.

"Swimming until the day I die" is a phrase often heard around the halls of the FINIS headquarters. Our products allow swimmers to do just that - to live a mentally and physically healthy lifestyle.





TRAINING GEAR





HENRI SCHOEMAN
2016 OLYMPIC BRONZE MEDALIST

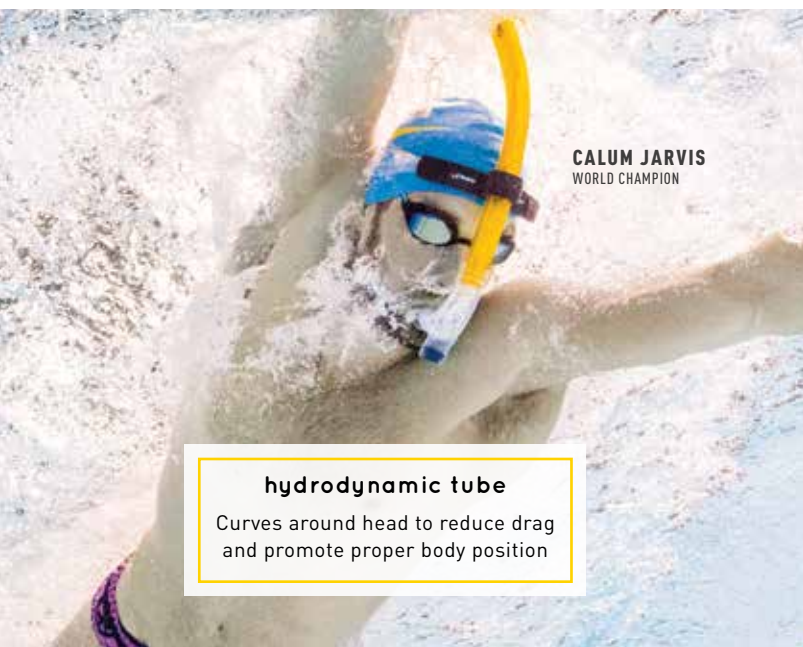
center-mount design

Allows for relaxation in the water in order to focus on stroke and improve technique



one-way purge valve

Allows water to flow out of the tube without entering the mouthpiece



CALUM JARVIS
WORLD CHAMPION

hydrodynamic tube

Curves around head to reduce drag and promote proper body position



ORIGINAL SWIMMER'S SNORKEL

technical & training snorkel

Allows swimmers to focus on stroke technique without the interruption of turning the head to breathe. The center-mount design accommodates a full range of motion for butterfly, breaststroke and freestyle.

① YELLOW (STYLE: 1.05.009) ② PINK (STYLE: 1.05.009.112)

REPLACEMENT PURGE VALVE | STYLE: 1.05.010.101

REPLACEMENT HEAD BRACKET | STYLE: 1.05.017.101

Jr Size (pg. 84)



GLIDE SNORKEL

technique & training snorkel

Introductory technique and training snorkel, ideal for fitness and team training. The center-mount design accommodates a full range of motion for butterfly, breaststroke and freestyle.

STYLE: 1.05.002

❶ MINT GREEN (107) ❷ OCEAN BLUE (118)

REPLACEMENT HEAD BRACKET | STYLE: 1.05.017.101



FREESTYLE SNORKEL

designed for freestyle

Allows swimmers to focus on freestyle stroke technique without the interruption of turning the head to breathe. The curved design promotes proper head position and body alignment to maximize stroke efficiency. Reinforced stability allows for full range of motion at all speeds, including flip turns. Ideal for a lower hand position for sprint freestyle training.

STYLE: 1.05.001 | U.S.A. PATENTED

REPLACEMENT HEAD BRACKET | STYLE: 1.05.017.101

A high-action photograph of a swimmer, Filip Zaborowski, in a pool. He is wearing a black swim cap with 'ZABOROWSKI' written on it, blue goggles, and a green swimsuit. He is using yellow FINIS paddles on both hands and feet. The water is splashing around him, and the background shows the blue lanes of the pool.

did you know?

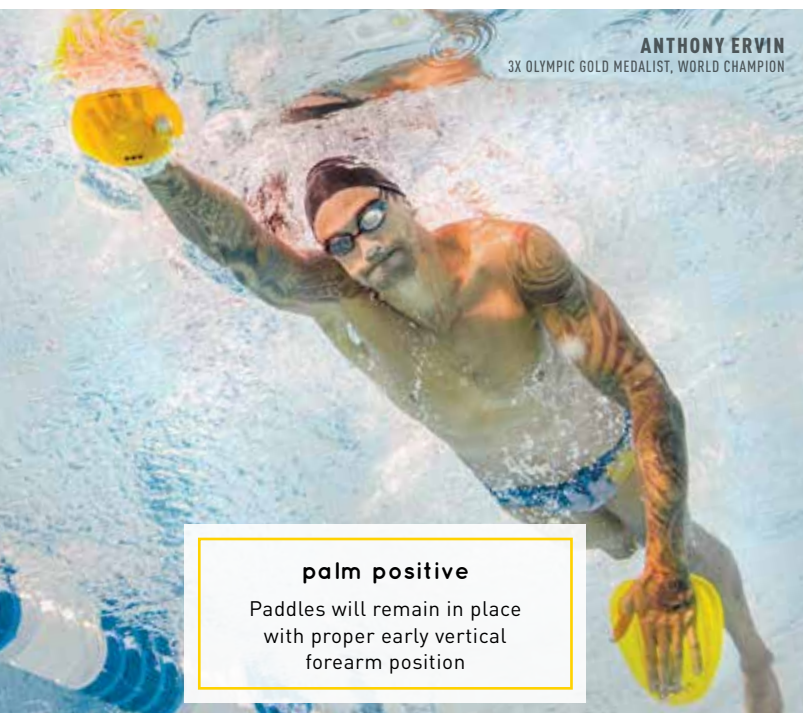
With the development of the Agility paddles in 2012, FINIS introduced **the first strapless paddle design to the market**. The ergonomically advanced design teaches swimmers *the correct palm-positive hand position* without the hassle and discomfort of traditional paddles. Shortly after, FINIS introduced the **Instinct** paddle, a reiteration of the Agility paddles' convex strapless design in a smaller sculling paddle. The remarkably simple design of the Agility paddles earned FINIS recognition from every corner of the swimming community and a **2013 Red Dot Design Award**.

FILIP ZABOROWSKI
2016 OLYMPIAN



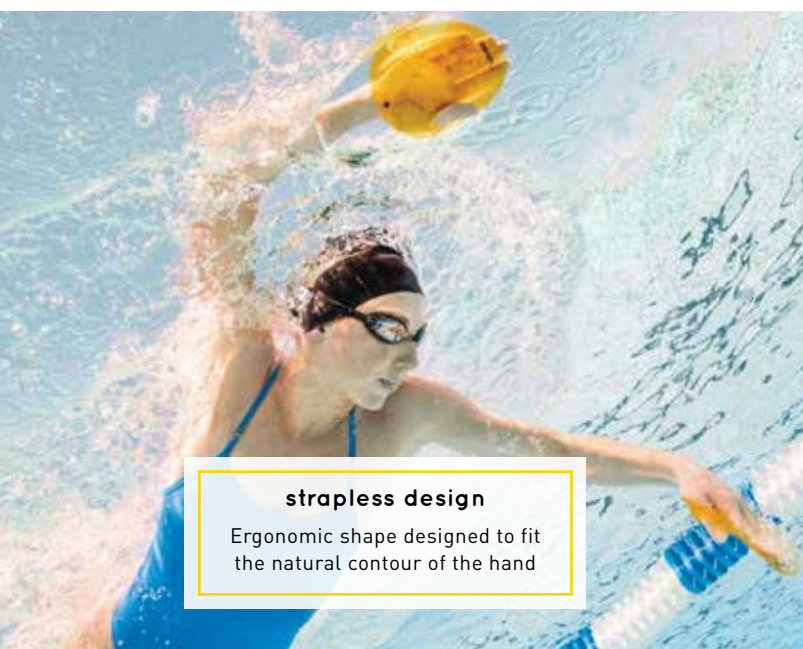
all four swim strokes

Versatile tool for butterfly, backstroke, breaststroke and freestyle



palm positive

Paddles will remain in place with proper early vertical forearm position



strapless design

Ergonomic shape designed to fit the natural contour of the hand



AGILITY PADDLES

strapless paddles

Ergonomically-advanced design teaches an early vertical forearm position to increase stroke efficiency. The convex shape requires a proper palm positive hand position.

Due to the paddles' strapless design, incorrect technique will cause the paddles to fall off.

STYLE: 1.05.145 | U.S.A. PATENTED

AVAILABLE SIZES: **S** (04), **M** (05), **L** (06)

Size Chart (pg. 119)



did you know?

The original idea for the Iso paddles emerged during a conversation with Nort Thorton discussing *how ping-pong balls can teach swimmers how to engage proper muscles for each swim stroke*. This began the ideation to create a paddle that captured the same engagement while **allowing the hand to be in the correct position**. The very first prototypes of the Iso paddles were made of Play-Doh back in October, 2014.





self-correct technique

Increases the 'feel for the water' and allows swimmers to make adjustments to improve stroke technique



inside isolation

Using the edge on the inside (yellow on left, grey on right) allows swimmers to isolate and engage the pectoral, bicep and deltoid muscles



outside isolation

Using the edge on the outside (grey on left, yellow on right) allows swimmers to isolate and engage the triceps and trapezius muscles



Outside Isolation
(Recommended for freestyle and backstroke)



Inside Isolation
(Recommended for breaststroke and butterfly)

ISO PADDLES

strapless isolation paddles

Iso paddles are strapless paddles designed to isolate specific muscle groups, develop proper hand position and heighten stroke awareness. Iso paddles are uniquely designed to create an imbalance in the catch phase of a stroke, which forces swimmers to apply more pressure on either side of the paddle in order to maintain a proper stroke.

STYLE: 1.05.033 | PATENT PENDING

AVAILABLE SIZES: **S** (04), **M** (05)

Size Chart (pg. 119)



INSTINCT PADDLES

strapless sculling paddles

The ergonomically-advanced design teaches correct palm positive hand position while sculling. The convex shape isolates stroke movements, bringing attention to small stroke imperfections.

STYLE: 3.05.002 | U.S.A. PATENTED

AVAILABLE SIZES: **M** (05), **L** (06)

Size Chart (pg. 119)



FREESTYLER PADDLES

freestyle training paddles

Specifically designed for freestyle training, the long fin shape and surf-skeg design planes the hand forward through the water, improving distance-per-stroke. Promotes a strong pull-through and better hip rotation. The narrow profile prevents shoulder strain.

STYLE: 1.05.020.50

REPLACEMENT TUBING | STYLE: 1.05.029

Jr Size (pg. 87)



FOREARM FULCRUMS SR

early vertical forearm tool

Develops early vertical forearm (EVF) and increases stroke efficiency. An EVF position utilizes the forearm through the pull, from fingertips to elbow. Promotes stroke refinement through muscle memory of the proper hand, wrist and forearm position.

STYLE: 1.05.028.5 | U.S.A. PATENTED

Jr Size (pg. 87)



BOLSTER PADDLES

early vertical forearm paddles

Encourages high-elbow technique that leads to a more efficient stroke. The wide paddle design secures wrist and offers resistance through the pull. Improves catch and recovery technique in all four swim strokes.

STYLE: 1.05.026

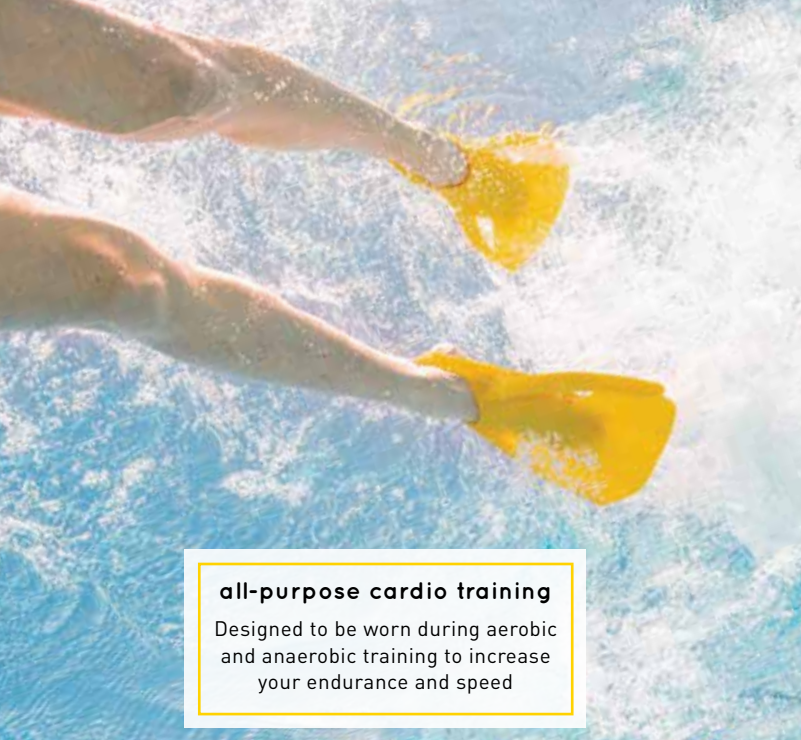
REPLACEMENT TUBING | STYLE: 1.05.029



ANTHONY ERVIN
3X OLYMPIC GOLD MEDALIST, WORLD CHAMPION

did you know?

With the development of the Edge fins, John Mix partnered up with Industrial Designer, David Beittel, and long-time friend of FINIS, Marty Hull. They set out to make a fin that ***improves technique and gives your legs a real workout*** (without compromising on comfort). It takes power to push these fins through the water, which **results in building strength and endurance**. Made of 100% silicone, Edge fins *will mold to your feet over time*, like breaking in a new pair of shoes.



all-purpose cardio training

Designed to be worn during aerobic and anaerobic training to increase your endurance and speed



industry-leading comfort

Ergonomic contours maintain constant connection with the top of the foot to prevent skin irritation



engages key muscle groups

Designed to catch water on the up-kick, activating hamstrings and glutes



EDGE FINS

muscle-building training fins

The Edge fins are designed to improve technique and give your legs a real workout. It takes power to push these fins through the water, which results in building strength and endurance. The side rails on the fin activate your hips and quadriceps – enforcing a proper kick that starts at your hips and not your knees. This motion is great for glute and hamstring development.

STYLE: 2.35.050

Size Chart (pg. 119)



Z2 GOLD ZOOMERS®

short blade swim fins

The comfort of natural rubber creates a secure fit and inhibits hyperflexion. The fluid separator on top of the fin helps reduce fatigue. The flex box on the bottom of fin catches water on the up-kick to build muscle. An ideal training fin for drill progression.

STYLE: 2.35.004 | **U.S.A. PATENTED**

Jr Size (pg. 88) | Size Chart (pg. 119)



ZOOMERS® GOLD

short blade training fins

Short blade encourages shorter, faster kicks for added propulsion through the water. Natural rubber provides a secure and comfortable fit. An ideal training fin for cardiovascular conditioning and speed training.

STYLE: 2.35.003 | **U.S.A. PATENTED**

Size Chart (pg. 119)



POSITIVE DRIVE FINs

four stroke training fins

Ellipsoidal blade generates correct propulsion in all four swim strokes, including breaststroke. The short, wide blade design promotes an inward supination kick style to improve foot speed and ankle flexibility. An ideal training fin for the individual medley.

STYLE: 2.35.100

POSITIVE DRIVE FIN REPLACEMENT STRAP | STYLE: 2.35.102.06

Jr Size (pg. 88) | Size Chart (pg. 119)



LONG FLOATING FINs

floating swim fins

Long, hydrodynamic blade lifts legs for a more propulsive kick. Added buoyancy reduces drag and builds leg strength. The closed heel design provides protection against hyperflexion of ankles and increases comfort. An ideal training fin for all ages and abilities.

STYLE: 1.05.037

Jr Size (pg. 88) | Color-Coded By Size | Size Chart (pg. 119)

did you know?

The Evo monofin is the **first and only short-blade monofin** designed to teach swimmers an *efficient dolphin kick*, *build muscle memory*, and *create perfect body position in the water*. We achieved our goal of designing a monofin that supports a natural dolphin kick *by enabling ankle movement*. This allows swimmers to be able to wear a monofin for longer periods of time without slowing kick tempo and stroke rate.





short blade increases tempo

Allows swimmers to keep a quick tempo during underwater dolphin kick and increases stroke rate during full-stroke butterfly



emphasizes the up-kick

Creates extra resistance on the up-kick to build muscle and generate a powerful kick cycle



OLIVIA SMOLIGA
OLYMPIC GOLD MEDALIST, WORLD CHAMPION

patent-pending design

The foot pockets' flexible connector enables swimmers to keep a natural kick – allowing the foot to angle in on the down-kick and out on the up-kick



new!

EVO MONOFIN

quick-tempo monofin

The Evo is the first and only short-blade monofin designed to teach swimmers an efficient dolphin kick, build muscle memory, and create perfect body position in the water. We achieved our goal of designing a monofin that supports a natural dolphin kick by enabling ankle movement.

STYLE: 1.35.029.104

Size Chart (pg. 119)



FOIL MONOFIN

technique monofin

Teaches the foil body motion developed and made popular by Coach Bob Gillett. Promotes an equal use of up and down kicks for propulsion throughout the entire dolphin kick, increasing core and leg strength. Natural rubber provides a secure and comfortable fit.

STYLE: 1.35.012 | U.S.A. PATENTED

Size Chart (pg. 119)



SHOOTER MONOFIN

short blade monofin

Short fiberglass blade is ideal for competitive swimmers who want to develop a quick, powerful dolphin kick while improving flexibility in feet and ankles. Allows for high speed training that targets core and leg muscles.

STYLE: 1.35.004 | U.S.A. PATENTED

[ASSEMBLED IN THE USA]

Size Chart (pg. 119)



TRAINER 1 MONOFIN

swim training monofin

Long flexible fiberglass blade is ideal for competitive swimmers who want to improve body balance and stroke timing, while strengthening core muscles. Corrects dolphin kick technique by generating kick from hips and chest instead of knees.

STYLE: 1.35.005

[ASSEMBLED IN THE USA]

Size Chart (pg. 119)



COMPETITOR MONOFIN

professional freedive monofin

Hand-tapered fiberglass blade and durable rubber foot pocket create a whip-like action at the end of each kick and supply compounded resistance for maximum propulsion. Ideal for freedivers, fin swimmers and water sport enthusiasts.

STYLE: 1.35.007

[ASSEMBLED IN THE USA]

Size Chart (pg. 119)



RAPID MONOFIN

recreational adult monofin

Teaches teens and adults proper undulation in the water and builds core and leg muscles. The blade flexibility provides speed without causing added strain on ankles. Built-in stability ridge provides proper flexion, and an adjustable heel strap offers a customizable fit.

STYLE: 1.35.003 | **U.S.A. PATENTED**

RAPID REPLACEMENT STRAP | STYLE: 1.35.009



WAVE MONOFIN

recreational youth monofin

Teaches younger swimmers the undulation needed for a proper dolphin kick while building leg strength and water confidence. The quick-release foot straps provide safety in the water.

STYLE: 1.35.001 | **U.S.A. PATENTED**

WAVE REPLACEMENT STRAP | STYLE: 1.35.008



OLIVIA SMOLIGA
OLYMPIC GOLD MEDALIST, WORLD CHAMPION

did you know?

In true FINIS fashion, we've added a **contemporary twist on a classic training tool**. Not satisfied with the limitations of the traditional pull buoy, John Mix (in collaboration with TJ Tollakson, Professional Triathlete and Trip Hedrick, Coach and Masters Swimmer) tasked the product development team to design an ankle float that maintained the functionality of a leg buoy. With the 2015 launch of the Axis buoy, FINIS offers **all swimmers the ability to isolate core muscle groups and improve body rotation**.



OLIVIA SMOLIGA
OLYMPIC GOLD MEDALIST, WORLD CHAMPION

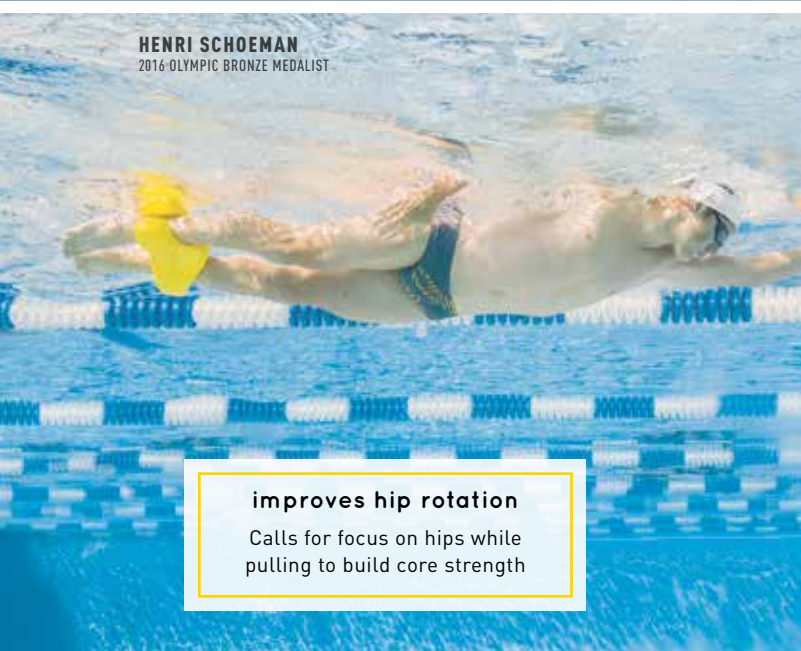
**promotes elevated
body position**

Lifts hips and legs for
proper technique



ergonomic keyholes

Easy to transfer the buoy
between ankles and legs



HENRI SCHOEMAN
2016 OLYMPIC BRONZE MEDALIST

improves hip rotation

Calls for focus on hips while
pulling to build core strength



AXIS BUOY

dual-function pull buoy

Dual-function design improves body position
and builds upper body and core strength.
The ergonomically designed keyholes allow
swimmers to easily move the buoy from ankles
to legs. The EVA foam provides durability and
prevents skin irritation.

STYLE: 1.05.041

AVAILABLE SIZES: **S** (04), **M** (05)

Small Size (pg. 84)



FOAM PULL BUOY SR

leg buoy

Immobilizes legs and provides lift to build upper body strength and increase focus on proper hip rotation. The EVA foam provides durability and prevents skin irritation.

STYLE: 1.05.036.50

Jr Size (pg. 84)



ALIGNMENT KICKBOARD

streamline kickboard

Hydrodynamic design and stabilizing hand strap allows control over the board without gripping, creating perfect alignment from fingertips to toes. When paired with a snorkel, it encourages proper head alignment and improves overall technique. The EVA foam provides durability and prevents skin irritation.

STYLE: 1.05.042 | U.S.A. PATENTED



FOAM KICKBOARD SR

standard kickboard

Builds leg strength by immobilizing arms. The EVA foam provides durability and prevents skin irritation.

STYLE: 1.05.035.50

Jr Size (pg. 84)





HYDRO HIP

core strengthening tool

Bilateral blade promotes proper timing of hips, arms and body. Adds resistance to improve core strength and builds muscle groups that aid in full body rotation. Ideal for drills or technique-focused training sessions.

STYLE: 1.05.007



TECH TOC

audible hip rotation training tool

Utilizes a ball bearing and acoustic amplifiers to create sound as the device is tipped from side to side. Provides immediate audio feedback to teach proper timing and hip rotation.

STYLE: 1.05.014



DRYLAND CORD

resistance stretch cord

Durable rubber tubing and comfortable handles designed to simulate swimming movements to build strength and improve range of motion. Available in three different resistances for swimmers of all ages and abilities.

STYLE: 1.05.113

1 YELLOW (104) - LIGHT RESISTANCE

2 GREEN (105) - MEDIUM RESISTANCE

3 RED (102) - HEAVY RESISTANCE



DRAG+FLY™

adjustable swim chute

Sleek, versatile and durable, designed to maximize the power of resistance training for every fitness goal. With the advanced Resistance Zip System, swimmers and coaches can easily adjust the level of intensity to take strength and endurance training to the next level.

STYLE: 1.05.103 | U.S.A. & AUSTRALIA PATENTED



SWIM PARACHUTE

resistance parachute

A comfortable, adjustable nylon belt connected to a durable parachute creates resistance during workout. The added resistance builds muscle and endurance. Compatible with all four swim strokes and does not interfere with kicking or flip turns.

STYLE: 1.05.110

1 RED 8" (102)

2 NAVY 12" (106)



ANTHONY ERVIN
3X OLYMPIC GOLD MEDALIST, WORLD CHAMPION

ELECTRONICS



DAVE SCOTT
6X IRONMAN CHAMPION

what's so great about this product?

“The FINIS Swim Coach Communicator allows me to **communicate with triathletes as they're swimming**.

For the first time in my coaching career I'm able to teach athletes **in real-time**, correcting and reinforcing their technique and avoiding the development of bad habits.

It's especially useful when I'm teaching difficult concepts, like the high-elbow set in freestyle. This is not a natural movement for most swimmers, and it's difficult for triathletes to feel when they're just learning it or if they're performing it incorrectly.

The FINIS Swim Coach Communicator **helps me get faster results** with my swimmers by speeding up my teaching process and improving the precision of my communication. **It's technology that really works.**”

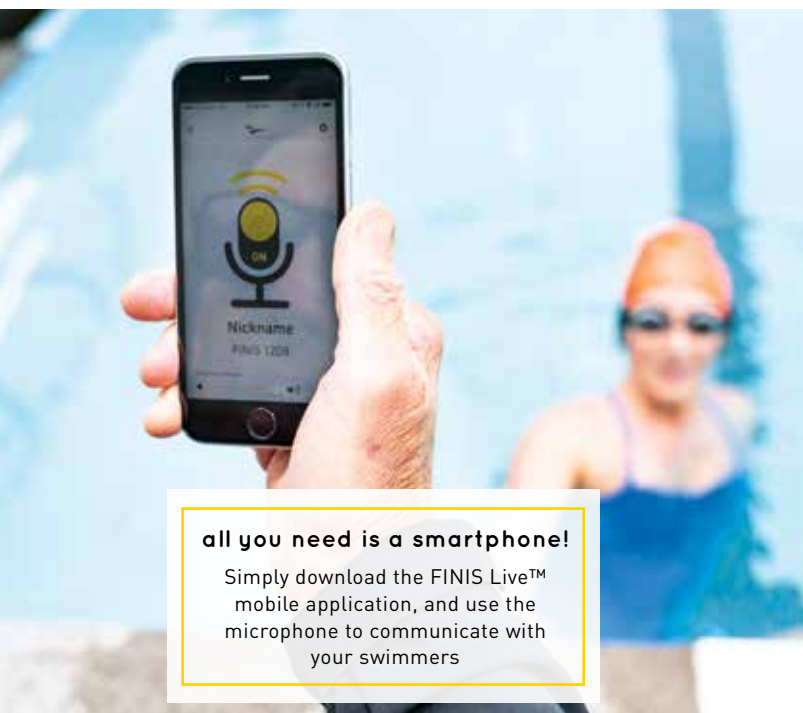
- Dave Scott
6x IRONMAN World Champion





bone conduction audio transmission

Crystal clear sound underwater without the use of ear buds



all you need is a smartphone!

Simply download the FINIS Live™ mobile application, and use the microphone to communicate with your swimmers



bluetooth® audio transmission

Transmits from your smartphone to the device's receiver – keep the receiver above the water for a successful signal



new!

SWIM COACH COMMUNICATOR

coach-to-swimmer voice feedback

The Swim Coach Communicator allows coaches to talk to their swimmers as they swim. It works by using a Bluetooth® signal from a smartphone to a receiver located on the back of the swimmer's head. Swimmers can instantly correct their stroke technique and adjust tempo to prevent bad habits from forming during practice.

STYLE: 1.30.043


Download the FINIS Live™ mobile app!



DOWNLOAD ON THE
APP STORE



DOWNLOAD ON
GOOGLE PLAY

A close-up, underwater photograph of a swimmer's head and hands. The swimmer is wearing a white swim cap and large, dark-tinted goggles. Their hands are holding a yellow, heart-shaped electronic device with a small digital screen and buttons. The background is the clear blue water of a pool, with some light reflecting off the surface.

did you know?

FINIS designed the Tempo Trainer in 2001 with the intent to help swimmers manipulate and regulate the two performance-related variables: **stroke rate and distance-per-stroke**. This underwater metronome has since evolved into the Tempo Trainer Pro, with three different modes for use in and out of the water.



audible beep

Loud enough to hear in and out of the water



ANTHONY ERVIN
3X OLYMPIC GOLD MEDALIST, WORLD CHAMPION

perfect for pacing

Consistent stroke tempo eliminates lulls in races or workouts



multiple sports

Ideal for swimming, biking, running and more



TEMPO TRAINER PRO

underwater metronome

The small, waterproof device easily secures beneath a swim cap and transmits an audible tempo beep. Three different modes allow for customizable pace training, adjustable by 1/100th of a second. Includes a clip for dryland exercise.

STYLE: 1.05.120 | **U.S.A PATENTED**

REPLACEMENT CLIP | STYLE: 1.05.016

Download the Tempo Trainer Pro Reference Guide online for more information!

did you know?

FINIS introduced the SwiMP3 in 2005 with the first use of **patented bone conduction technology to transmit high-quality music underwater**. The SwiMP3 was a remarkable achievement in swimming technology and revered by Time Magazine as a top sporting goods item in 2005. Using the same bone conduction technology as the SwiMP3, the **Duo™ was developed to help more people experience the joy of swimming to music**. While maintaining many of the same elements found in the original three-piece SwiMP3, the new compact design of the Duo™ adds comfort and security.



HENRI SCHOEMAN
2016 OLYMPIC BRONZE MEDALIST

**supports MP3 & WMA
audio formats**

Compatible with iTunes®; listen
to music, audiobooks,
podcasts and more



DUO™

underwater MP3 player

Waterproof MP3 player featuring a sleek, two-piece design and Bone Conduction audio transmission to deliver crystal clear audio through cheekbones to the inner ear. Integrated control buttons and goggle brackets make swimming to music easier than ever before.

STYLE: 1.30.058.244 | U.S.A. PATENTED

**bone conduction audio
transmission**

Crystal clear sound underwater
without the use of ear buds

4GB of storage

Stores up to approximately 1000
songs or 60 hours of playback

HENRI SCHOEMAN
2016 OLYMPIC BRONZE MEDALIST





SWIMSENSE™ LIVE

bluetooth® swim watch

The ideal training tool for any swimmer looking to build motivation, promote healthy habits and make the most of every swim. Designed using proprietary algorithms to record the most accurate swim workout data. The Swimsense™ Live helps all swimmers optimize time spent in the water. Using the FINIS Live™ application, users can view and share swim workout data from multiple devices.

STYLE: 1.30.054



FINIS LIVE™

swim fitness application

Free fitness mobile application designed to view the details of any swim workout. Whether it is tracking laps, stroke-specific data or calories burned, FINIS Live™ allows users to view, store and share key swim statistics.



DOWNLOAD ON THE
APP STORE



DOWNLOAD ON
GOOGLE PLAY



3X300M STOPWATCH

300 split memory stopwatch

Allows user to take 300 splits and review both cumulative and lap splits on a three-line LCD display. Easy-to-read running times, current lap time and cumulative splits.

STYLE: 1.30.040



3X100M STOPWATCH

100 split memory stopwatch

Allows user to take 100 splits and review both cumulative and lap splits on a three-line LCD display. Easy-to-read running times, current lap time and cumulative splits.

STYLE: 1.30.032



CALUM JARVIS
WORLD CHAMPION



SILICONE DOME CAP

Ergonomically developed to create a secure fit on the head. The 3D design creates different levels of compression throughout the cap to prevent wrinkles and reduce drag. Molded gripping inside the cap ensures a secure fit during races.

STYLE: 3.25.029

1 WHITE (100)

2 BLACK (101)



SILICONE CAP

100% silicone provides added durability and comfort. Reduces drag in the water while protecting hair against chlorine and sun exposure. With a secure fit, keeps hair away from eyes and face while swimming.

STYLE: 3.25.002

1 BLACK (101)

3 RED (102)

2 WHITE (100)

4 BLUE (103)



LATEX CAP

100% latex reduces drag in the water while protecting the hair against chlorine and sun exposure. With a secure fit, keeps hair away from the eyes and face while swimming.

STYLE: 3.25.001

1 YELLOW (104)

3 WHITE (100)

2 BLACK (101)

4 BLUE (103)



SPANDEX CAP

Made from a flexible material that is gentle on skin and hair and fits comfortably on most head sizes.

STYLE: 3.25.012

1 RED (102)

2 BLACK (101)

3 ROYAL BLUE (114)



ONLY AVAILABLE IN THE U.S.A.

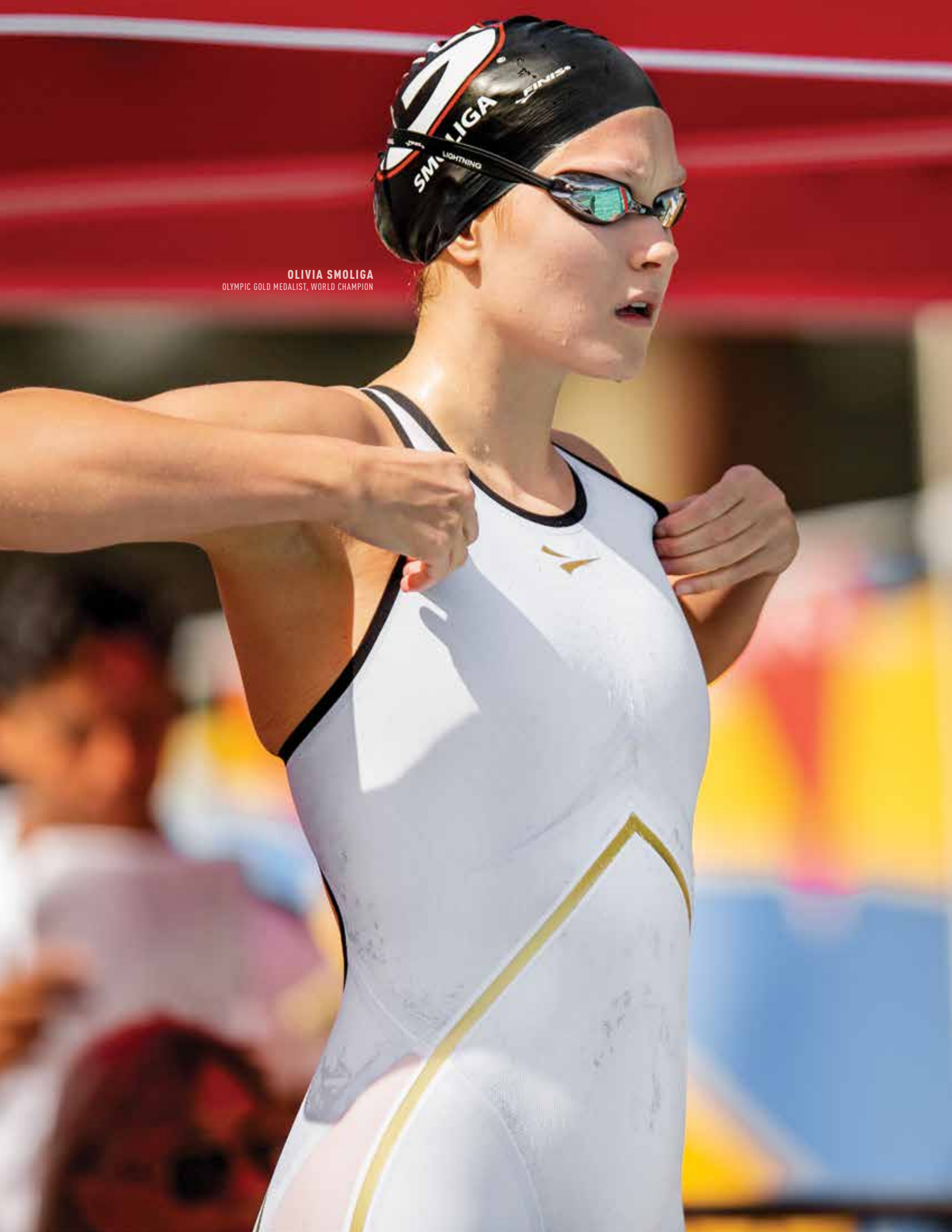
OLIVIA SMOLIGA
OLYMPIC GOLD MEDALIST, WORLD CHAMPION



SWIMWEAR

ANTHONY ERVIN
3X OLYMPIC GOLD MEDALIST, WORLD CHAMPION





OLIVIA SMOLIGA
OLYMPIC GOLD MEDALIST, WORLD CHAMPION

new!

RIVAL

elite technical racing suit

Designed to lock and lift your hips into
perfect body alignment.

FEMALE OPEN BACK KNEESKIN | STYLE: 1.10.021

MALE JAMMER | STYLE: 1.125.1.10.125

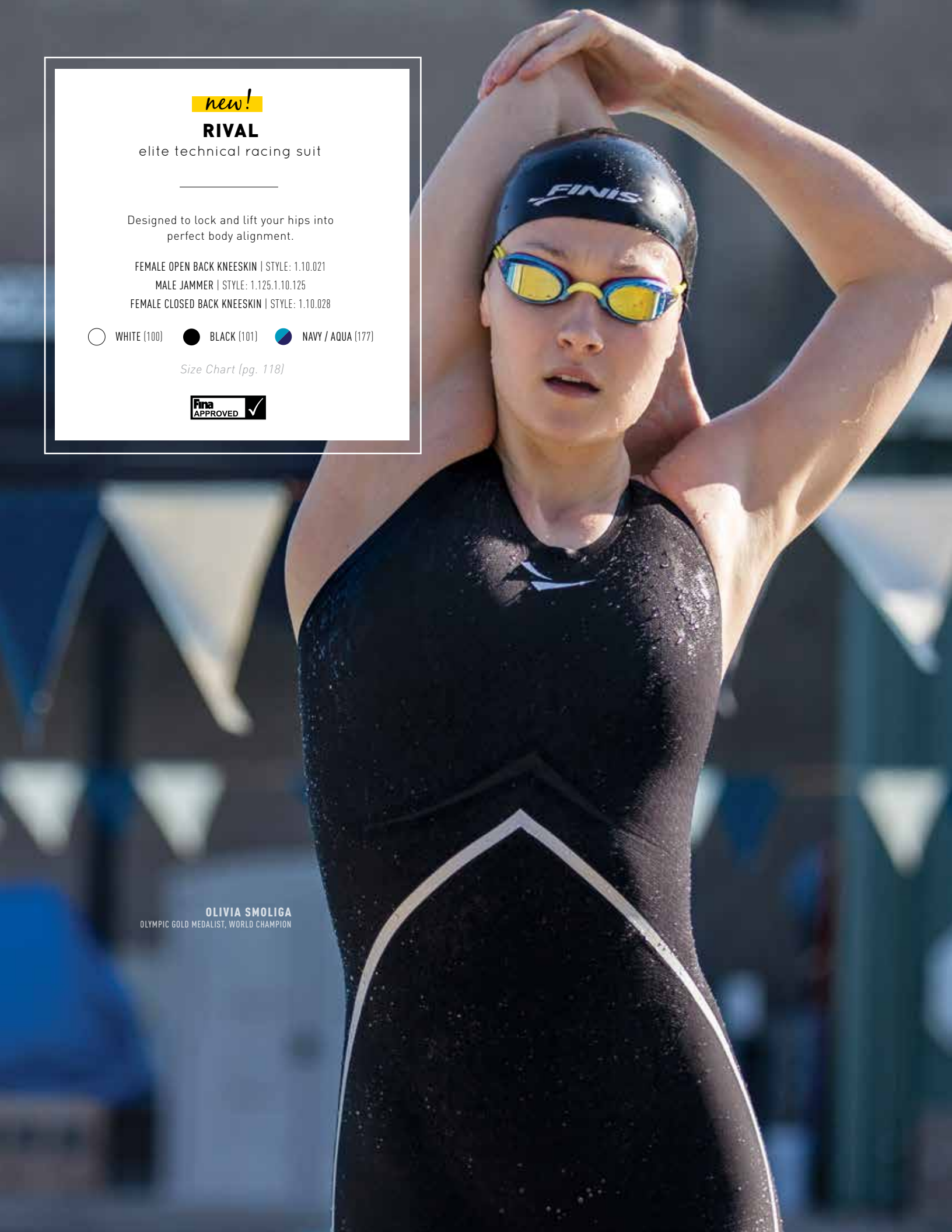
FEMALE CLOSED BACK KNEESKIN | STYLE: 1.10.028

○ WHITE (100) ● BLACK (101) ● NAVY / AQUA (177)

Size Chart (pg. 118)



OLIVIA SMOLIGA
OLYMPIC GOLD MEDALIST, WORLD CHAMPION





two fabrics are better than one

The one-way stretch increases compression and the two-way stretch allows optimal range of motion



structured fit

Designed with a reinforced seam pattern that wraps from the front of the hips to the back, creating a structured and streamlined fit



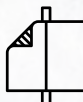
compression in the right areas

Compression placed in areas to conform and streamline the body, thus reducing drag



water repellency

A hydrophobic coating is applied and creates that cool "water beading effect" we all love



every seam has a reason

Bonded seams are placed to strengthen the fabrics and enhance compression in adjacent areas



compressive dual-paneling

Each panel of the liner fabric is customized to match the stretch characteristics of the outer fabric

new!

VAPOR PRO

performance technical racing suit

Designed with a light, durable fabric to provide compression and a universal fit.

FEMALE OPEN BACK KNEESKIN | STYLE: 1.10.015

MALE JAMMER | STYLE: 1.10.112

● BLACK (101)

Size Chart (pg. 118)





resilient fabric

Light, durable fabric provides flexibility and compression



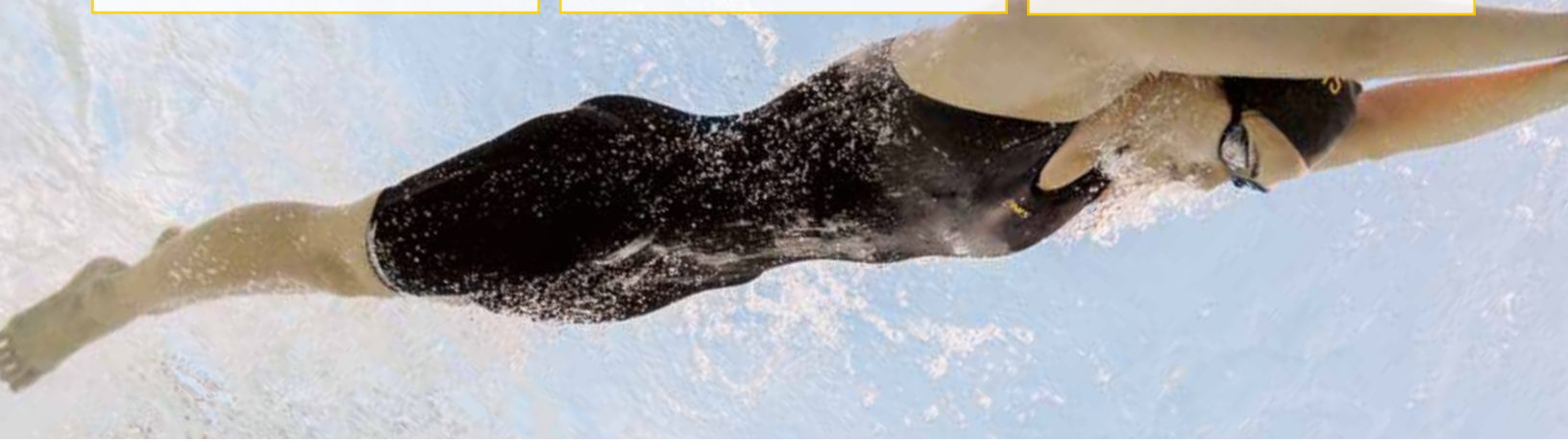
semi-structured fit

Designed with reinforced seams on the side of the body to provide a structured fit that can accommodate most body shapes



flexible compression

Provides compression without limiting range of motion



water repellency

A hydrophobic coating is applied and creates that cool "water beading effect" we all love



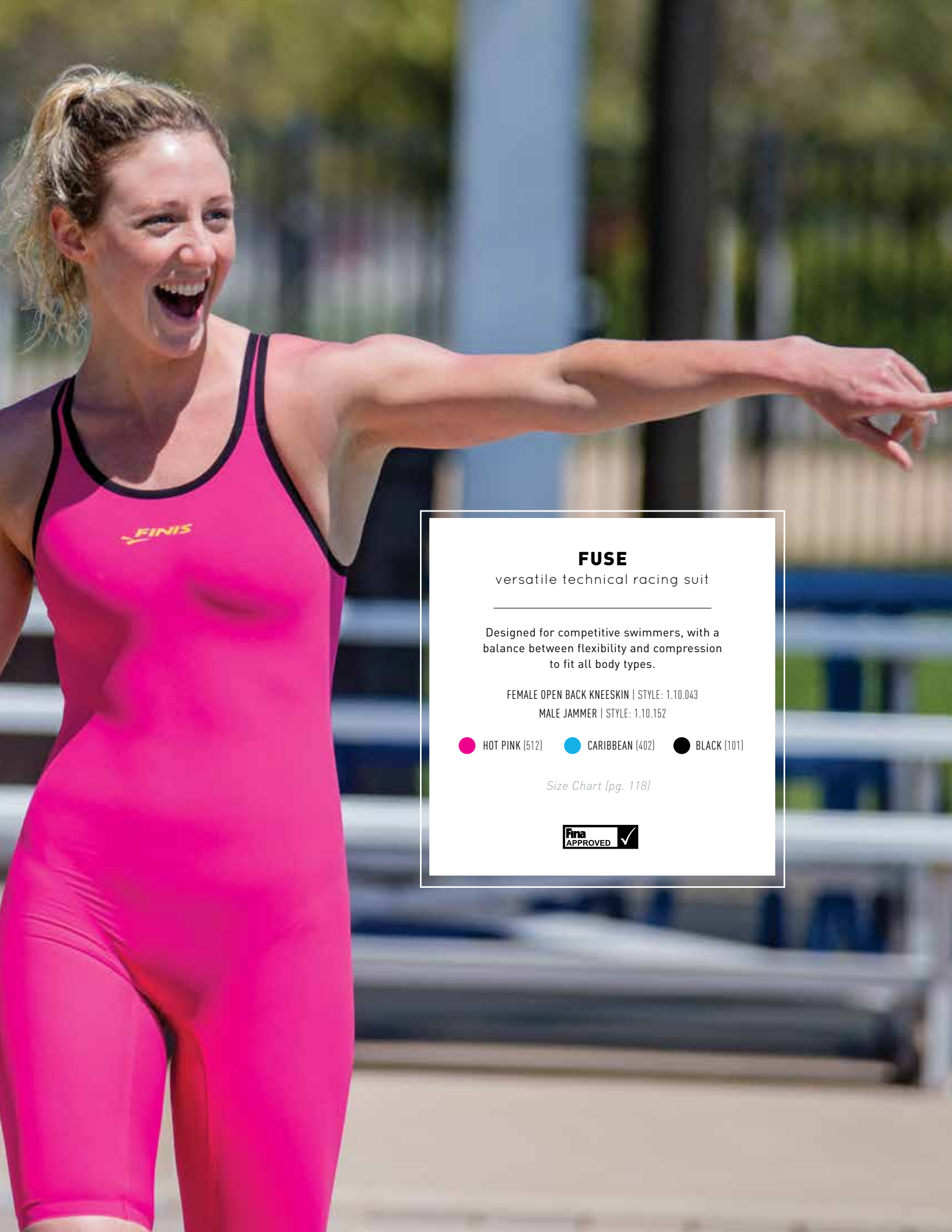
welded seam technology

Bonded seams reduce drag and friction throughout the suit



select dual-paneling

Dual paneling on the back of legs provides optimal lift and better body position in the water



FUSE

versatile technical racing suit

Designed for competitive swimmers, with a balance between flexibility and compression to fit all body types.

FEMALE OPEN BACK KNEESKIN | STYLE: 1.10.043

MALE JAMMER | STYLE: 1.10.152

 HOT PINK (512)  CARIBBEAN (402)  BLACK (101)

Size Chart (pg. 118)





UV protective fabric

Hydro-reflective fabric provides
UVA/UVB protection



flexible fit

Designed with a durable, flexible fabric
and bonded seams to provide a universal
fit for athletes of all ages and abilities



flexible compression

Provides compression without limiting
range of motion



water repellency

A hydrophobic coating is applied and
creates that cool “water beading effect”
we all love



welded seam technology

Bonded seams reduce drag and friction
throughout the suit





THERMAL SWIM SHIRT

thermal training shirt

Made of a unique BiPoly fabric and provides warmth by trapping body heat. Made from a strong, yet lightweight material that conforms to the upper body without restricting range of motion. Offers UVA, UVB and anti-bacterial protection.

STYLE: 1.05.048

Size Chart (pg. 118)



REVERSIBLE DRAG SUIT

reversible resistance training

Unisex training suit designed to increase drag while swimming. Resistance training is proven to build muscle, increase endurance and boost speed. Made of 100% polyester mesh fabric to withstand the damaging effects of chlorine and sunlight. Intended for use over a swimsuit.

STYLE: 1.20.009.210

Size Chart (pg. 118)



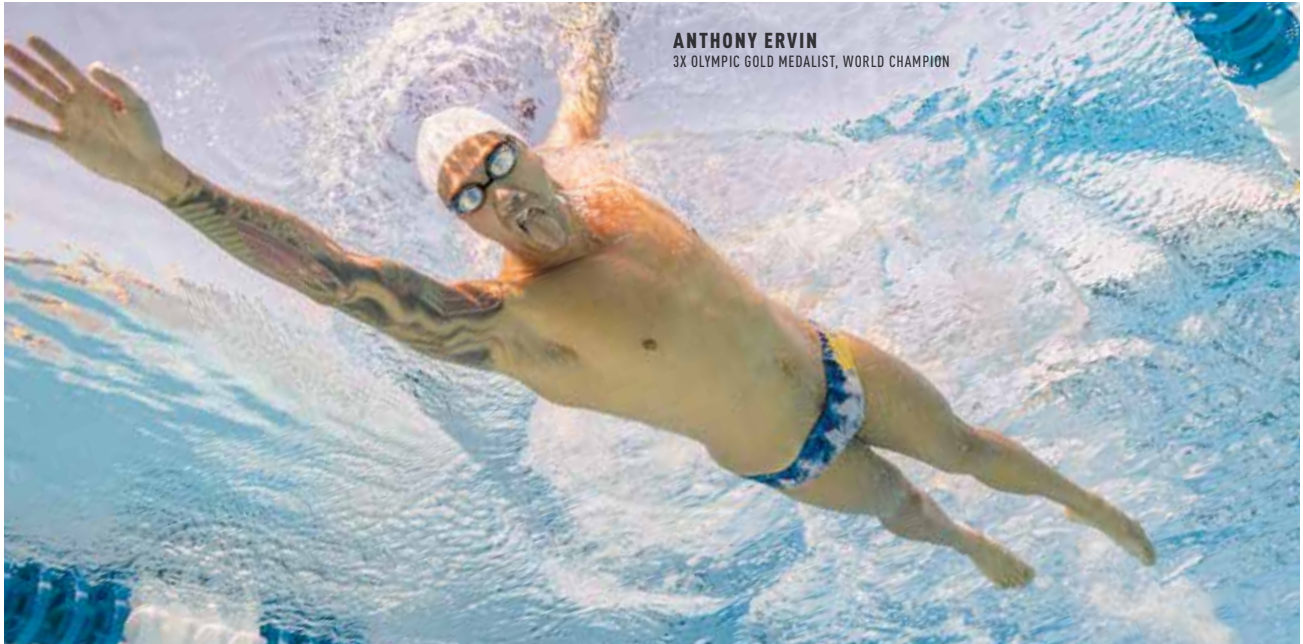
ULTIMATE DRAG SUIT

high resistance training

Unisex training suit designed with integrated drag cups to maximize resistance training. Resistance training is proven to build muscle, increase endurance and boost speed. Made of AquaTuff® fabric to withstand the damaging effects of chlorine and sunlight. Intended for use over a swimsuit.

STYLE: 1.20.007.101

Size Chart (pg. 118)



ANTHONY ERVIN
3X OLYMPIC GOLD MEDALIST, WORLD CHAMPION

CUSTOM SWIMWEAR



OLIVIA SMOLIGA
OLYMPIC GOLD MEDALIST, WORLD CHAMPION



FINIS Custom Swimwear!

How does it work, you ask?

FINIS Custom Swimwear gives teams the ability to stand out by designing their own unique, **completely customizable swimwear!**

To get started:

1.



select styles

2.



select colors

3.



make it your own

4.



tell us more

What's the process like?

3 proofs are provided free of charge,
if more are needed a \$100 USD artwork design fee is applied

Sizing kits and sublimated color charts available

The first order of a design requires a minimum of
10 suits (can be a mix of different suit styles)

Add names to the custom suits for an additional \$1 per name

Payment is due upon order and proof approval - prior to production.

4-6 weeks lead time from when the final proof
and size order is approved

All suits are a Polyester blend, 53% Polyester & 47% PBT
(Polyester Blended Technology)

Not the creative type?

No worries! Our expert designers are here to assist!
Submit an idea and a FINIS designer will help create
the perfect design.

OLIVIA SMOLIGA
OLYMPIC GOLD MEDALIST, WORLD CHAMPION



wondering which swimwear options are available to design?

**Note: Artwork shown is for suit style example only, not available for purchase.*



BLADEBACK

STYLE: 1.10.051



SKINBACK

STYLE: 1.10.052



OPENBACK

STYLE: 1.10.053



OPENBACK BIKINI

STYLE: 1.10.054



BLADEBACK BIKINI

STYLE: 1.10.058



**WATER POLO
ZIPPER BACK**

STYLE: 6.10.006



JAMMER

STYLE: 1.10.162



AQUA SHORTS

STYLE: 1.10.167



BRIEF

STYLE: 1.10.161



**WATER POLO
BRIEF**

STYLE: 6.10.004



DRAG SUIT

REGULAR DRAG SUIT | STYLE: 1.20.022

REVERSIBLE DRAG SUIT | STYLE: 1.20.023

Size Chart (pg. 118)



CUSTOM SEAMLESS CAP

For custom caps, contact a local dealer or custom@FINISinc.com.

STYLE: 1.25.007



CUSTOM LATEX AND SILICONE CAP

For custom caps, contact a local dealer or custom@FINISinc.com.

- ❶ LATEX CAPS | STYLE: 1.25.005
- ❷ SILICONE CAPS | STYLE: 1.25.006



CUSTOM WATER POLO CAPS

Ability to customize ear guard color, number colors, fabric colors and team designs.

STYLE: 6.10.010

EAR GUARD COLORS





CUSTOM MESH BAG

Personalized mesh bags featuring team colors, logos and mascots. High-quality mesh material allows equipment to dry quickly and prevents mildew and bacteria.

STYLE: 1.25.008



CUSTOM TOWEL

Personalized towels featuring team colors, logos and mascots. Lightweight material, ideal for training and traveling.

STYLE: 1.25.020



CUSTOM SWIM SHIRT

Personalized swim shirts featuring team colors, logos and mascots. Available in short sleeve and long sleeve.

- ① SHORT SLEEVE | STYLE: 1.10.070
- ② LONG SLEEVE | STYLE: 1.10.071

Size Chart (pg. 118)



TEAM SPONSORSHIPS





ARE YOU READY TO JOIN #TEAMFINIS?

Take your team TO THE NEXT LEVEL
with the best gear our sport has to offer!

The MANY perks of our Team Agreement program include:

FREE ULTIMATE COACHES KIT

Sign up to get an exclusive collection of our
industry-leading training gear absolutely free

FREE TECH SUITS

Opportunities for your athletes to receive
innovative tech suits free of charge or at
industry-leading discounts.

COMPLETELY CUSTOM SWIMWEAR

Don't waste time with designs you don't like -
we offer completely sublimated swimwear with
the design that works best for your team.

Your Team. Your Design.

PERSONALIZED CUSTOMER SUPPORT

People like you are the reason we do business,
so we will be there every step of the way to
support you and your team's needs.

WE'RE READY FOR YOU!

Contact a local FINIS dealer or go to
FINISswim.com for more information.



KIDS







FOAM KICKBOARD JR

standard kickboard

Helps swimmers build leg strength by immobilizing the arms. The EVA foam provides durability and prevents skin irritation.

STYLE: 1.05.035.48

Adult Size (pg. 34)



AXIS BUOY

dual-function pull buoy

Dual-function design improves body position and builds upper body and core strength. The ergonomically designed keyholes allow swimmers to easily move the buoy from ankles to legs. The EVA foam provides durability and prevents skin irritation.

STYLE: 1.05.041

AVAILABLE SIZES: **S** (04), **M** (05)

Adult Size (pg. 33)



FOAM PULL BUOY JR

leg buoy

Immobilizes the legs and provides lift to help build upper body strength and increase focus on the proper hip rotation. The EVA foam provides durability and prevents skin irritation.

STYLE: 1.05.036.48

Adult Size (pg. 34)



SWIMMER'S SNORKEL JR

technical & training snorkel

Allows younger swimmers to focus on stroke technique without the interruption of turning the head to breathe. The tube is two inches shorter than the Swimmer's Snorkel, decreasing workload on lungs. Ideal for swimmers ages 8 to 12. Includes nose clip.

STYLE: 1.05.009.48

REPLACEMENT HEAD BRACKET | STYLE: 1.05.017.101

REPLACEMENT PURGE VALVE | STYLE: 1.05.010.101

Adult Size (pg. 13)







FOREARM FULCRUM JR

early vertical forearm tool

Develops early vertical forearm (EVF) and increases stroke efficiency. An EVF position utilizes forearm during the pull, from fingertips to elbow. Promotes stroke refinement through muscle memory of the proper hand, wrist and forearm position.

STYLE: 1.05.028.48 | U.S.A. PATENTED

Adult Size (pg. 21)



FREESTYLER PADDLES JR

freestyle training paddles

Specifically designed for freestyle training, the long fin shape and surf-skeg design planes the hand forward through the water, improving distance-per-stroke. Promotes a strong pull-through and better hip rotation. The narrow profile helps prevent shoulder strain.

STYLE: 1.05.006.48

REPLACEMENT TUBING | STYLE: 1.05.029

Adult Size (pg. 21)



FISHTAIL 2

learn-to-swim fins

Designed to be worn as soon as a child is able to walk, the Fishtail swim fins reward even the smallest kicks with forward movement to accelerate learning and build confidence.

STYLE: 1.05.059.37

Size Chart (pg. 119)



BOOSTER FINS

short blade swim fins

Feedback from the fins teaches swimmers how kicking generates forward movement through the water. Made of a natural rubber that floats, Booster fins help lift legs to the surface and teach proper body position.

STYLE: 1.05.081

Color-Coded By Size | Size Chart (pg. 119)



LONG FLOATING FINs

floating swim fins

The long, hydrodynamic blade lifts legs for a more propulsive kick. The added buoyancy reduces drag and builds leg strength. The closed heel design provides protection against hyperflexion of ankles and increases comfort. Great for all ages and abilities.

STYLE: 1.05.037

Adult Size (pg. 24) | Color-Coded By Size | Size Chart (pg. 119)



POSITIVE DRIVE FINs

four stroke training fins

Ellipsoidal blade generates correct propulsion in all four swim strokes, including breaststroke. The short, wide blade design promotes an inward supination kick style to improve foot speed and ankle flexibility. An ideal training fin to teach young swimmers a proper breaststroke kick.

STYLE: 2.35.100

POSITIVE DRIVE FIN REPLACEMENT STRAP | STYLE: 2.35.102.06

Adult Size (pg. 24) | Size Chart (pg. 119)



Z2 GOLD ZOOMERS®

short blade swim fins

The comfort of natural rubber creates a secure fit and inhibits hyperflexion. The fluid separator on top of the fin helps reduce fatigue. The flex box on the bottom of fin catches water on the up-kick to build muscle. An ideal training fin for drill progression.

STYLE: 2.35.004 | U.S.A. PATENTED

Adult Size (pg. 24) | Size Chart (pg. 119)







ANIMAL HEAD CAP

animal-shaped silicone cap

Enjoy the water with fun animal designs. Soft, 100% silicone offers a durable and comfortable fit.

STYLE: 3.25.037

- ❶ TIGER (314) ❸ CORAL FISH (316)
- ❷ EMERALD FISH (315)

STYLE: 3.25.036

- ❹ POLAR BEAR (300) ❷ PARROT (319)
- ❺ HIPPO (312) ❸ PLUM FISH (310)
- ❻ SHARK (311) ❹ BAY FISH (317)

SWIM DIAPER (NAPPY)

reusable swim diaper (nappy)

Great alternative to disposable diapers. Snug elastic around waist and legs create a secure fit to contain solid waste. Woven polyester lining creates an extra soft layer against baby's skin. UPF 50+ keeps harmful UV rays away from sensitive areas. Phthalates and PVC free.

SOLID | STYLE: 5.20.015

- ❶ ROYAL (114) ❸ PINK (112)
- ❷ LIME GREEN (009)

PATTERN | STYLE: 5.20.014

- ❹ TURTLE GREEN (505)
- ❺ FISHBOWL BLUE (403)



Check out Mermaid™ Collection Swim Diaper Prints on pg. 99!

Size Chart (pg. 118)



MERMAID™ COLLECTION



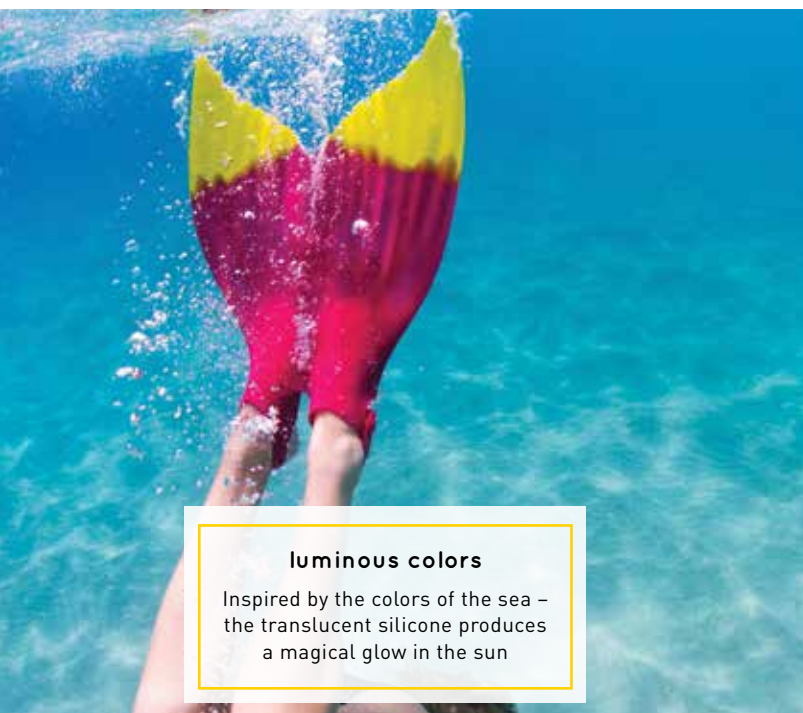






separate foot pockets

Separate foot pockets for maximum comfort and performance



luminous colors

Inspired by the colors of the sea – the translucent silicone produces a magical glow in the sun



100% flexible silicone

Constructed from a flexible and durable silicone material



LUNA FIN

mermaid monofin

Dive into an enchanting underwater adventure. Luna allows users to glide through the water with the same graceful movements as a mermaid. The translucent silicone material shines brilliantly under beams of sunlight. Should only be used under adult supervision.

STYLE: 1.30.010

- ① MYSTIC MELON - SMALL (012.04) ② ENCHANTING EMERALD - MEDIUM (089.05)

Size Chart (pg. 119)



AQUARIUS FIN

fantasy monofin

Specifically designed for teens and adults, with a larger foot pocket and surface area in comparison to the Mermaid™ monofin. The adjustable foot strap and strategically placed vents allow for swimming at high speeds while maintaining proper technique. Should only be used under adult supervision. Ideal for swimmers ages 10 and up.

STYLE: 1.30.015 | PATENT PENDING

① MAGICAL MAGENTA (223)

② TROPICAL TEAL (128)

Size Chart [pg. 119]



MERMAID™ FIN

recreational monofin

Designed to activate both mind and body, the Mermaid™ monofin teaches an equal use of up and down kicks - allowing swimmers to gracefully glide like real mermaids. Should only be used under adult supervision. Ideal for swimmers ages 6 and up.

STYLE: 1.30.012 | PATENT PENDING

① PACIFICA PINK (212)

② PARADISE PURPLE (200)

③ BAYSIDE BLUE (307)

Size Chart [pg. 119]



MERMAID™ FIN COVER

Express your inner mermaid by dressing up your mermaid fin! Bright colors and fun prints allow you to show off your style.

STYLE: 1.30.080

① TROPICAL (128)

② SEAHORSE (204)

③ STARFISH (231)

④ BAYSIDE (307)

⑤ PACIFICA (212)

⑥ PARADISE (161)







1



2



3



4



5



1



2



3



4



5



6



7



8



9



1



2

MERMAID™ GOGGLES

mermaid kids' goggles

Designed with silicone eye gaskets - Creating the most gentle, watertight kids' goggle. The Mermaid™ Goggles are latex and PVC free and offer UV protection to keep your children safe during water activities. Ideal for swimmers ages 4 to 10.

STYLE: 3.45.096

1 SUNSET (341)

4 BEACH (137)

2 LAGOON (352)

5 FINTASTIC (302)

3 SCALES (327)



new!

MERMAID™ CAPS

Mermaid accessories allow you to instantly transform into a mermaid. The Silicone Cap reduces drag in the water and protects hair against chlorine and sun exposure. Made of 100% silicone for added durability and comfort.

STYLE: 3.25.039

1 CROWN (150)

4 CACTUS (182)

7 FLAMINGO (215)

2 PARADISE (161)

5 FLOATY (191)

8 SEASHELL (224)

3 MERMAN (173)

6 SEAHORSE (204)

9 STARFISH (231)

new!

MERMAID™ DIAPERS

reusable swim diaper

Dive into an enchanting underwater adventure with the FINIS Mermaid™ Collection. Reusable swim diapers are required by most swim schools and public pools and are great alternatives to disposable diapers. With a snug fit and elastic around the waist and legs, the FINIS Swim Diaper keeps solids contained and prevents leaks. Made with UPF 50+ to keep harmful UV rays away from sensitive areas.

STYLE: 5.20.016

1 STARFISH (231)

2 FINTASTIC (302)

Check out more Swim Diaper Prints on pg. 91!

Size Chart (pg. 118)



ONLY AVAILABLE IN THE U.S.A.



ACCESSORIES





JAMES GUY
2X OLYMPIC SILVER MEDALIST, WORLD CHAMPION



MESH BAG

mesh gear bag

A convenient way to store all swim equipment. The durable nylon mesh material provides airflow for fast drying and includes a pull drawstring that securely closes the bag. A small zip compartment safely stores smaller items such as goggles or a Tempo Trainer Pro.

STYLE: 1.25.026

- BLACK (101)
- NAVY (106)
- RED (102)



FINIS T-SHIRTS

unisex t-shirts

FINIS t-shirts inspired by our history and the innovation of our products. Made from 50/50 ringspun cotton/poly to provide a comfortable and relaxed fit.

- 1 FINIS WAVE (1.15.125.299)
- 3 RETRO LOGO (1.15.125.104)
- 2 5TH STROKE (1.15.130)

AVAILABLE SIZES: **S** (04), **M** (05), **L** (06), **XL** (07), **XXL** (08)



new!

FINIS COACHES POLO

unisex polo

The FINIS Polo is designed specifically for #TeamFINIS coaches and swimmers. Made from 90% Polyester and 10% Spandex for a breathable and relaxed fit. UPF 50 and UVA/UVB protection.

STYLE: 1.15.002

- 1 GREY (318)
- 3 CHARCOAL (127)
- 2 BLUE (103)

AVAILABLE SIZES: **S** (04), **M** (05), **L** (06), **XL** (07), **XXL** (08)



new!

FINIS BEANIE

unisex beanie

The FINIS Beanie is designed to keep you warm before early morning practices. Made from 100% Acrylic with 100% Cotton Lining. One size fits most.

STYLE: 1.15.005



ANTHONY ERVIN
3X OLYMPIC GOLD MEDALIST, WORLD CHAMPION

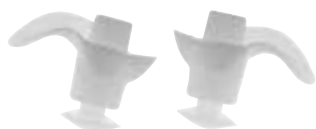


POSTURE TRAINER

head alignment training tool

Promotes correct head and spine alignment. When secured to back center of head, device should be undetectable until the swimmer exceeds recommended posture range. Improves alignment for all four swim strokes.

STYLE: 1.05.045



EAR PLUGS

The specialized shape conforms to ears, effectively sealing water out without going too far into the ears. 100% silicone provides maximum comfort and a secure seal. Carrying case included.

STYLE: 3.25.006.001



NOSE CLIP

Anatomic design comfortably fits most noses to keep water out. Made of a nylon material for prolonged life and pressure retention. Silicone nose pads offer maximum comfort. Carrying case included.

STYLE: 3.25.005

① BLUE (103) ② CLEAR (001)



PULLING ANKLE STRAP

Rubber strap worn around ankles to eliminate kicking. Ideally used with the Foam Pull Buoy, to immobilize legs to build upper body and stabilizing core strength.

STYLE: 1.05.052.104



DRY TOP

Patented design keeps the inner tube of the snorkel dry. An internal buoy rises when submerged to keep the snorkel dry, and falls when out of the water to allow for easy breathing. Compatible with Swimmer's Snorkel (Sr. & Jr) and Glide.

STYLE: 1.05.057



CARDIO CAP

Amplifies hypoxic training to increase the ability of muscles to recover when oxygen levels are low. Because of the added intensity, hypoxic training should take place in moderation in a well-supervised environment. Compatible with Swimmer's Snorkel (Sr & Jr).

STYLE: 1.05.022



FOOTBOOTIES

Soft neoprene material prevents chafing on top of feet and adds comfort when using fins or monofins.

STYLE: 1.25.001.101

AVAILABLE SIZES: **S** (04), **M** (05), **L** (06)

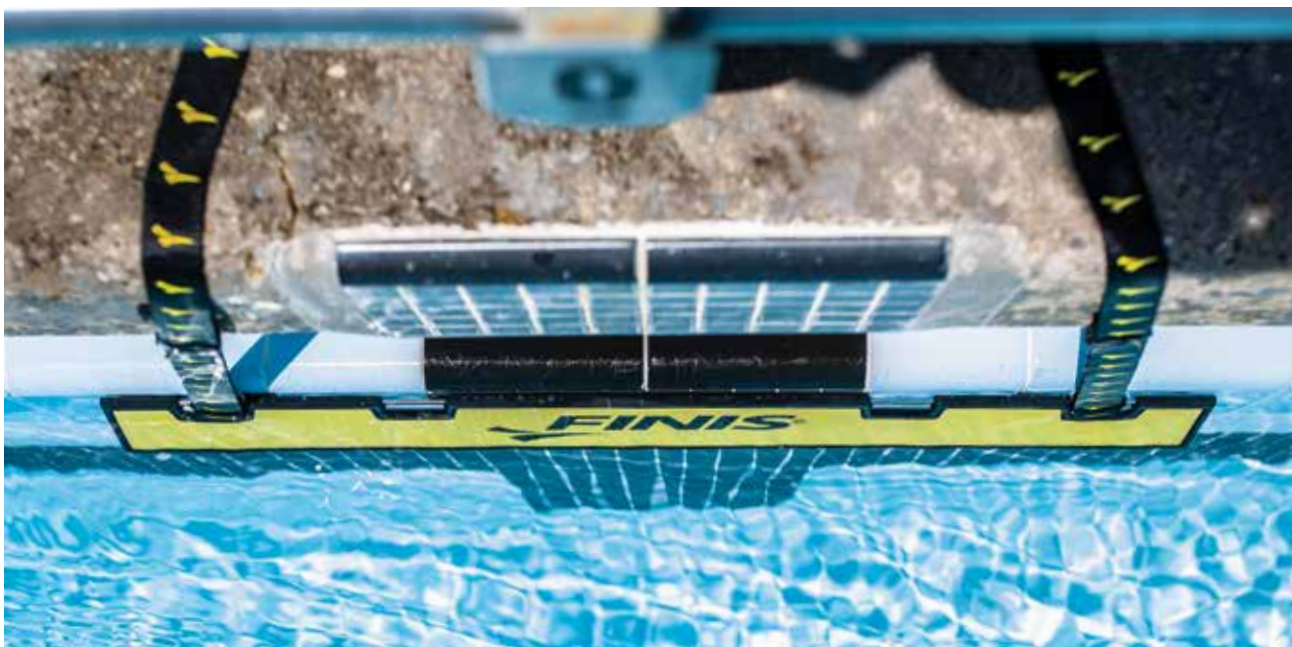


SKIN SOCKS

Versatile sport socks designed to protect and comfort feet. Reduces irritation against feet, effectively preventing blisters and chafing. The lightweight fabric conforms to feet during use, creating a thin and breathable layer of protection.

STYLE: 1.25.002.102

AVAILABLE SIZES: **S** (04), **M** (05), **L** (06)



POOL EQUIPMENT





did you know?

The Backstroke Start Wedge fits **all standard blocks!**



👉 I have now used the FINIS Backstroke Wedge at 4 different pools, each with a different block design. The performance is consistent in each. The wedge is lightweight and easy to transport between pools and takes less than 3 minutes to set up and adjust for a pool, compared to 30 minutes for the system used at our local 50 metre pool. I fully endorse this product and recommend every swim club to own a set. 👉

- Jason Quiterio

Head Coach Caradon Swimming Club & Owner of Ace Swimming





new!

BACKSTROKE START WEDGE

adjustable, nonslip backstroke starting wedge

The Backstroke Start Wedge is FINA-compliant and can be used during training and competition as a way for swimmers to get an explosive start without slipping. Unlike expensive automatic devices, Backstroke Start Wedge is manual and can be set up multiple ways to fit all standard starting blocks. Swimmers can also easily adjust the wedge to their desired height through five different settings to optimize their backstroke start.

STYLE: 1.30.031

Fina

FINA FR 2.10 COMPLIANT
FOR PRACTICE & COMPETITION



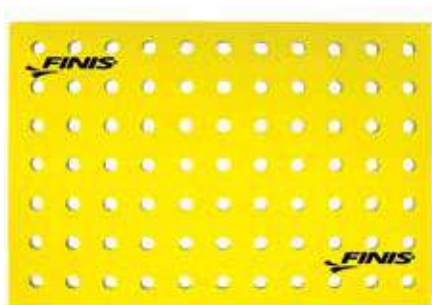
TEACHING PLATFORM

fiberglass standing deck

Submersible standing deck designed for teaching lessons in deeper water. The uniquely molded fiberglass creates a sturdy, non-slip surface above the pool bottom. Railings create a safe and clear distinction between teaching areas and can be connected to create larger platforms. Should only be used under adult supervision.

STP 1.2M | STYLE: 1.05.107.98

STP 1.8M | STYLE: 1.05.107.92



FLOATING ISLAND

learn-to-swim float for kids

Safe and fun learn-to-swim tool for swim classes, recreational poolside or open water. High-density EVA foam provides optimal buoyancy, and the holes allow water to seep through so children can build water confidence. Should only be used under adult supervision. Dimensions: W 50" X H 35" X D 1"

STYLE: 5.40.035.06

*Larger Floating Foam Mat Available For Special Order -
Dimensions: W 79" x 39.5" x D 1"*





TURNMASTER PRO

individual lane bulkhead

Portable lane bulkhead designed to maximize lane usage. Easily installed between two lane ropes, dividing one lane into two. Built of durable vinyl ester chlorine-resistant fiberglass to withstand the impact of race speed flip turns.

2.05 M | STYLE: 1.05.106.04

2.50 M | STYLE: 1.05.106.07

❶ GUTTER STRAPS | STYLE: 1.05.116

❷ WET DECK STRAPS | STYLE: 1.05.112

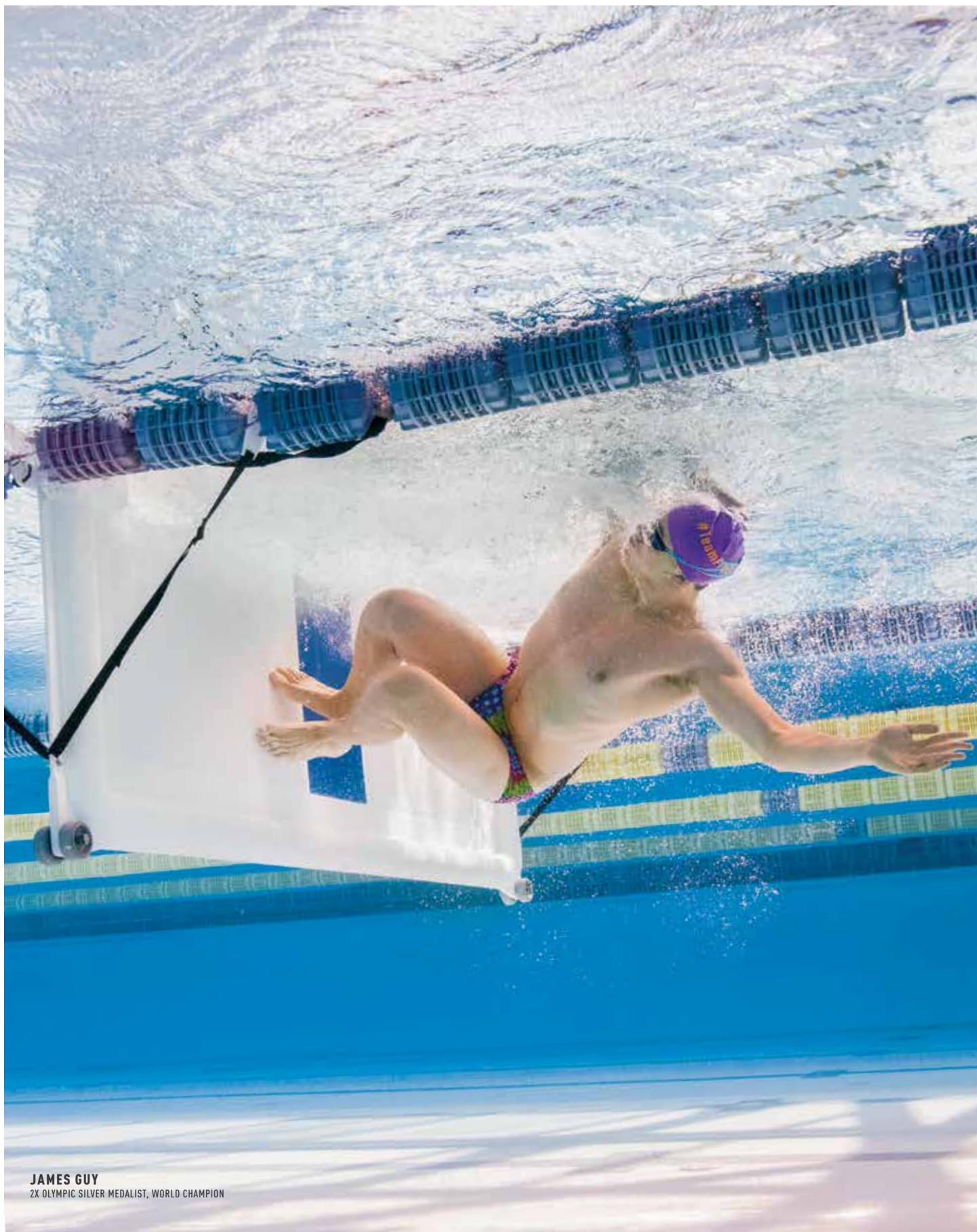


POOL MIRROR

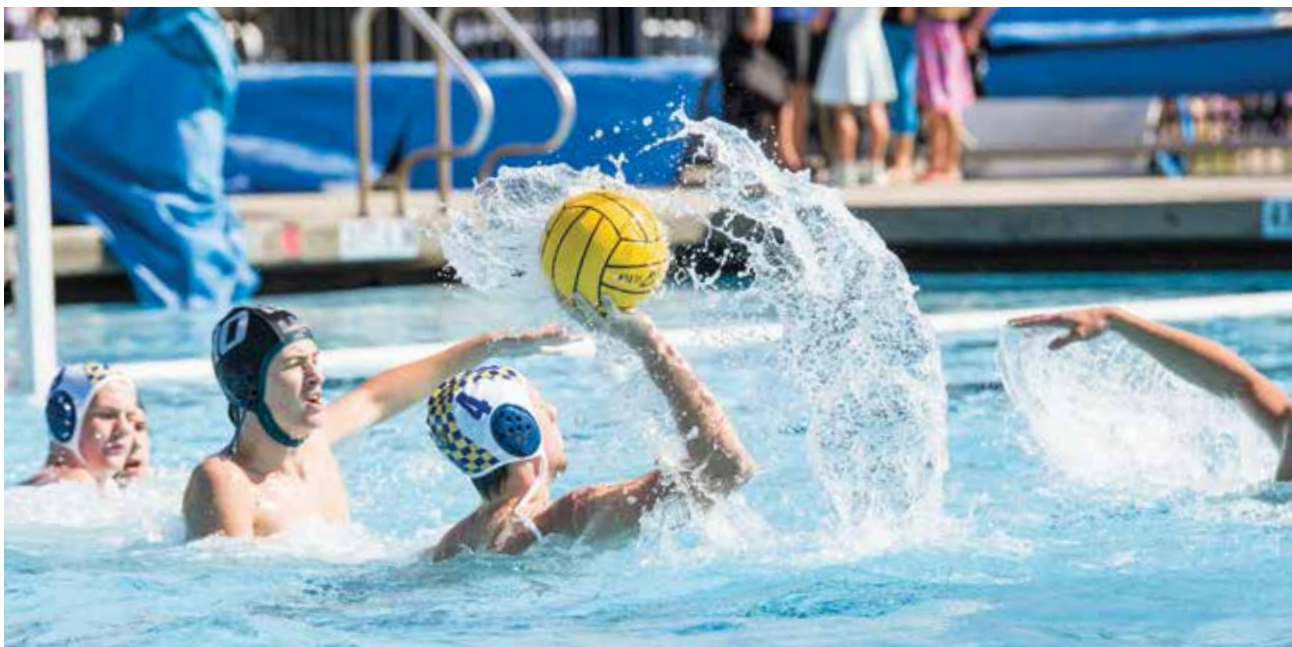
underwater mirror

Reinforced, polished aluminum provides instant visual feedback on stroke technique. Place mirror on the bottom of the pool or secure to the pool wall for flip turn feedback. Dimensions: W 28" X H 45.5"

STYLE: 1.05.013



JAMES GUY
2X OLYMPIC SILVER MEDALIST, WORLD CHAMPION



WATER POLO







CUSTOM WATER POLO ZIPPERBACK

Personalized water polo Zipperback featuring team colors, logos and mascots. 53% polyester and 47% PBT (polyester blended technology) provides a comfortable and durable fit. Fully lined front and back. See Custom(Pg. 75) for more custom options.

STYLE: 6.10.006



CUSTOM WATER POLO BRIEF

Personalized water polo Brief featuring team colors, logos and mascots. 53% polyester and 47% PBT (polyester blended technology) provides a comfortable and durable fit. Fully lined front and back. See Custom (Pg. 75) for more custom options.

STYLE: 6.10.004



CUSTOM WATER POLO CAPS

Ability to customize ear guard color, number colors, fabric colors and team designs. See Custom (Pg. 75) for more custom options.

STYLE: 6.10.010

EAR GUARD COLORS:





WATER POLO BALL

practice & competitive water polo ball

Regulation-size ball ideal for workouts and competitions. Made with a high-quality textured grip so players can skillfully handle the ball with ease. Uses a proprietary construction to hold shape and maintain consistent air pressure over time.

STYLE: 6.25.007

WOMEN SIZE 4 (49)

MEN SIZE 5 (43)



TEAM WATER POLO CAPS




solid team water polo caps

Durable nylon material comfortably conforms to any head shape. Secured to the head with a nylon tie, and equipped with strong plastic ear guards for protection during game play. Sold in sets, numbered 1-13 (Extension Set available 14-26). Player Number appears in three locations, both sides and top of cap. Two red goalie caps are included in each set (#1 and #13).

See Custom (Pg. 75) for custom Water Polo options.

TEAM | STYLE: 6.25.008

EXPANSION SET | STYLE: 6.25.010

-  NAVY (106)
-  WHITE (100)
-  INCLUDING TWO GOALIE CAPS (#1 AND #13)

SIZE CHARTS

RIVAL & VAPOR PRO TECH SUIT

MALE MEASUREMENTS

SIZE	20	22	24	26	28	30	32	*34	*36
HIP (IN)	33.8-35.4	34.6-36.2	35.4-37	36.2-37.8	37-38.6	37.8-39.4	38.6-40.9	39.3-42.5	40.2-44.1
HIP (CM)	86-90	88-92	90-94	92-96	94-98	96-100	98-104	100-108	102-112

FEMALE MEASUREMENTS

SIZE	20	22	24	26	28	30	32	*34	*36
CHEST (IN)	33-34.6	33.8-35.4	34.6-36.2	35.4-37	36.2-37.8	37-38.6	37.8-40.2	38.6-41.7	39.4-43.3
WAIST (IN)	25.2-26.4	26-27.2	26.8-28	27.6-28.7	28.3-29.5	29.1-30.3	29.9-31.1	30.7-31.9	31.5-32.7
HIP (IN)	33.8-35.4	34.6-36.2	35.4-37	36.2-37.8	37-38.6	37.8-39.4	38.6-40.9	39.3-42.5	40.2-44.1
CHEST (CM)	84-88	86-90	88-92	90-94	92-96	94-98	96-102	98-106	100-110
WAIST (CM)	64-67	66-69	68-71	70-73	72-75	74-77	76-79	78-81	80-83
HIP (CM)	86-90	88-92	90-94	92-96	94-98	96-100	98-104	100-108	102-112

*Size 34 & 36 only available in Vapor Pro

THERMAL SWIM SHIRT

YOUTH THERMAL SWIM SHIRT

SIZE	YXS (93)	YS (94)	YM (95)	YL (96)
AGE	4-6	7-10	11-14	13-14
HEIGHT (FT)	3'9"-4'6"	4'6"-4'11"	4'11"-5'3"	5'3"-5'7"
HEIGHT (CM)	114-137	137-150	150-160	160-170

ADULT THERMAL SWIM SHIRT

SIZE	S (04)	M (05)	L (06)	XL (07)
HEIGHT (FT)	5'2"-5'6"	5'4"-5'9"	5'8"-6'	6'-6'3"
HEIGHT (CM)	157-168	163-175	173-183	183-191
WEIGHT (LB)	110-130	120-150	150-180	180-200
WEIGHT (KG)	50-59	54-68	68-82	82-91

CUSTOM SWIM SHIRT

CUSTOM LONG SLEEVE SWIM SHIRT

SIZE	XS (03)	S (04)	M (05)	L (06)	XL (07)	XXL (08)
BUST (IN)	30	32	34	36	38	40
WAIST (IN)	30	32	34	36	38	40
SLEEVE INSEAM (IN)	19	20	21	22	23	24
TORSO (IN)	48	50	54	56	58	60
BUST (CM)	76.2	81.3	86.4	91.4	96.5	101.6
WAIST (CM)	76.2	81.3	86.4	91.4	96.5	101.6
SLEEVE INSEAM (CM)	48.3	50.8	53.3	55.9	58.4	60
TORSO (CM)	121.9	127	137.1	142.2	147.3	152.4

CUSTOM SHORT SLEEVE SWIM SHIRT

SIZE	XXXS (01)	XXS (02)	XS (03)	S (04)	M (05)	L (06)	XL (07)	XXL (08)	XXXL (09)	XXXXL (10)
BUST (IN)	17	18	19	20	21	22	23	24	25	26
WAIST (IN)	17	18	19	20	21	22	23	24	25	26
US SIZE (IN)	22	24	26	28	30	32	34	36	38	40
TORSO (IN)	56	58	60	62	62	64	66	66	68	68
BUST (CM)	43.2	45.7	48.3	50.8	53.3	55.9	58.4	61	63.5	66
WAIST (CM)	43.2	45.7	48.3	50.8	53.3	55.9	58.4	61	63.5	66
TORSO (CM)	142.2	147.3	152.4	157.5	157.5	162.6	167.6	167.6	172.7	172.7

ULTIMATE & REVERSIBLE DRAG SUIT

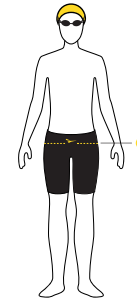
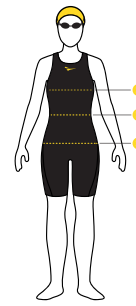
SIZE	XS	S	M	L	XL
WAIST (IN)	22"-24"	26"-28"	30"-32"	34"-36"	38"-40"
WAIST (CM)	56-61	66-71	76-81	86-91	97-102

FIT GUIDE!

TIPS!

If you are between sizes, use your hip measurement to determine your size.

FINIS technical swimwear typically fits 1-2 sizes down from training suit size.



- CHEST**
Measure the fullest part of the chest - be sure to go around your shoulder blades.
- WAIST**
Measure the narrowest part of your waist.
- HIPS**
Measure the widest part of your hips - be sure to go a few inches below your belt line.

FUSE TECH SUIT

MALE MEASUREMENTS

SIZE	20	22	24	26	28	30	32	34	36	38
HIP (IN)	34.6-36.2	35.4-37	36.2-37.8	37-38.6	37.8-39.4	38.6-40.2	39.4-41	40.2-41.7	41-42.5	41.7-43.3
HIP (CM)	88-92	90-94	92-96	94-98	96-100	98-102	100-104	102-106	104-108	106-110

FEMALE MEASUREMENTS

SIZE	20	22	24	26	28	30	32	34	36	38
CHEST (IN)	33.9-35.4	34.6-36.2	35.4-37	36.2-37.8	37-38.6	37.8-39.4	38.6-40.2	39.4-41	40.2-41.7	41-42.5
WAIST (IN)	26-27.2	26.8-28	27.6-28.7	28.3-29.5	29.1-30.3	29.9-31.1	30.7-31.9	31.5-32.7	32.3-33.5	33.1-34.3
HIP (IN)	34.6-36.2	35.4-37	36.2-37.8	37-38.6	37.8-39.4	38.6-40.2	39.4-41	40.2-41.7	41-42.5	41.7-43.3
CHEST (CM)	86-90	88-92	90-94	92-96	94-98	96-100	98-102	100-104	102-106	104-108
WAIST (CM)	66-69	68-71	70-73	72-75	74-77	76-79	78-81	80-83	82-85	84-87
HIP (CM)	88-92	90-94	92-96	94-98	96-100	98-102	100-104	102-106	104-108	106-110

CUSTOM SWIMWEAR

MALE MEASUREMENTS

SIZE	20	22	24	26	28	30	32	34	36	38	40
WAIST (IN)	20-22	22-24	24-26	26-28	28-30	30-32	32-34	34-36	36-38	38-40	40-42
WAIST (CM)	51-56	56-61	61-66	66-71	71-76	76-81	81-86	86-91	91-96	96-101	101-106

FEMALE MEASUREMENTS

SIZE	20	22	24	25	26	27	28	29	30	32	34	36	38	40
BUST (IN)	28	29	30	30.5	31	31.5	32	32.5	33	34	35	36	37.5	39
WAIST (IN)	20	21	22	22.5	23	23.5	24	24.5	25	26	27	28	29.5	31
TORSO (IN)	30.5	31.5	32.5	33	33.5	34	34.5	35	35.5	36.5	37.5	38.5	40	41.5
HIP (IN)	50	51.5	53	53.5	54.5	55.5	56	56.5	57.5	59	60.5	62	63.5	65
BUST (CM)	71	74	76	77.5	79	80	81	82.5	84	86	89	91	95	99
WAIST (CM)	51	53	56	57	58	59.5	61	62	63.5	66	68.5	71	75	78.5
TORSO (CM)	77.5	80	82	84	85	86	87.5	89	90	92.5	95	98	101.5	105.5
HIP (CM)	127	131	134.5	136	138.5	141	142	143.5	146	150	153.5	157.5	161	165

SWIM DIAPER (NAPPY)

SIZE (CODE)	XS (03)	S (04)	M (05)	L (06)	XL (07)	XXL (08)	3T (09)	4T (10)
AGE (MOS)	0-3	3-6	6-12	12-18	18-24	24-30	36	48
WEIGHT (LBS)	7-14	14-17	17-22	22-28	28-33	33-38	34-41	38-46
WEIGHT (KGS)	3-6	6-8	8-10	10-13	13-15	15-17	15-19	17-20

FIT GUIDE! Tips! Users who are in between sizes or have a wide foot, should select one size up.

LONG FLOATING FINS

YOUTH MEASUREMENTS

SIZE (CODE)	XXXXS [00]	XXXS [01]	XXS [02]
COLOR	Blue/Purple	Blue/Lime Green	Blue/Orange
US MALE	Jr 6-8	Jr 8-11	Jr 11-1
US FEMALE	Jr 6-8	Jr 8-11	Jr 11-1
EURO	24-26	26-29	29-33
COLOR-CODED BY SIZE			

ADULT MEASUREMENTS

SIZE (CODE)	XS [03]	S [04]	M [05]	L [06]	XL [07]	XXL [08]	XXXL [09]
COLOR	Blue/Yellow	Red/Black	Red/Blue	Red/Grey	Black/Red	Black/Navy	Black/Dark Green
US MALE	1-3	3-5	5-7	7-9	9-11	11-13	13-14
US FEMALE	2-4	4-6	6-8	8-10	10-12	12-14	14-15
EURO	33-35	35-37	37-39	39-42	42-44	44-46	46-47
COLOR-CODED BY SIZE							

ZOOMERS® GOLD

SIZE (CODE)	C [12]	D [13]	E [14]	F [15]	G [16]	H [17]
US MALE	3.5-5	5.5-7	7.5-8.5	9-10	10.5-11.5	11.5-13
US FEMALE	4.5-6	6.5-8	8.5-9.5	10-11	11.5-12.5	12.5-14
EURO	35-36	37-39	40-42	43-44	44-45	46-48

EDGE FINS

SIZE (CODE)	S [04]	M [05]	L [06]	XL [07]	XXL [08]
US MALE	5-7	7-9	9-11	11-13	13-15
US FEMALE	6-8	8-10	10-12	12-14	14-16
EURO	37.5-40	40-42.5	42.5-45	45-48	48-50

POSITIVE DRIVE FINS

SIZE (CODE)	XS [03]	S [04]	M [05]	L [06]	XL [07]	XXL [08]
US MALE	Y 8-13	1-3	3.5-6	6.5-8	8.5-10	10.5-13
US FEMALE	Y 8-13	2-4	4.5-7	7.5-9	9.5-11	11.5-14
EURO	31-33	34-35	36-37	38-40	41-43	44-45

Z2 GOLD ZOOMERS®

SIZE (CODE)	K12 [67]	A [68]	B [69]	C [70]	D [71]	E [72]	F [73]	G [74]	H [75]	I [76]
US MALE	K12	1-2.5	2.5-4	4.5-5	5.5-7	7.5-8.5	8.5-10	10.5-11.5	11.5-13	13.5-14.5
US FEMALE	K12	2-3.5	3.5-5	5-6.5	6.5-8	8.5-9.5	9.5-11	11.5-12.5	12.5-14	14-15.5
EURO	30-32	33-34	35-36	36-37	38-39	40-41	41-43	44-45	45-46	46-48

EVO MONOFIN

SIZE (CODE)	S [04]	M [05]	L [06]	XL [07]
US MALE	5.5-7	7-8.5	8.5-10	10-11.5
US FEMALE	7-8.5	8.5-10	10-11.5	11.5-13
EURO	37.5-39	39-42	42-44	44-45.5

SHOOTER, TRAINER I & COMPETITOR

SIZE (CODE)	M [05] Blue	L [06] Green	XL [07] Orange	XXL [08] Black
US MALE	6.5-8	8.5-10	10.5-12	12.5-16
US FEMALE	7.5-9	9.5-11	11.5-13	13.5-17
EURO	38-40	41-43	43-45	46-49

FOIL MONOFIN

SIZE (CODE)	XS [03]	S [04]	M [05]	L [06]	XL [07]
US MALE	3-5	5.5-8	8.5-10	10.5-13	13.5-15
US FEMALE	4-6	6.5-9	9.5-11	11.5-14	14.5-16
EURO	35-37	38-40	41-43	44-46	47-49

FISHTAIL 2 FINS

US JUNIOR	6-11
EU JUNIOR	22-29

**Designed to be worn as soon as a child is able to walk*

LUNA FIN

SIZE	S	M
US MALE	Jr 11 - 3	4 - 9
US FEMALE	Jr 11 - 3	5 - 10
EURO	Jr 28 - 35	36 - 42
AUS	Jr 11 - 2	3 - 8

MERMAID™ FIN

US MALE	1-6
US FEMALE	2-7
EURO	33-39

**Designed for ages 6+*

AQUARIUS FIN

US MALE	4-10
US FEMALE	5-11
EURO	36-43

**Designed for ages 10+*

**Please Note: Adjustable strap fits a variety of shoe sizes*

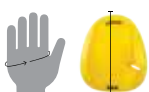
BOOSTER FINS

SIZE (CODE)	XXXXS [00]	XXXS [01]	XXS [02]
COLOR	Purple	Green	Orange
US JUNIOR	Jr 6-8	Jr 8-11	Jr 11-1
EU JUNIOR	24-26	26-29	29-33
COLOR-CODED BY SIZE			

AGILITY PADDLES

SIZE	S	M	L
HAND CIRCUMFERENCE	7" - 8" (17.8cm-20.3cm)	8" - 9" (20.3cm-22.9cm)	9" or more (20.9cm or more)
VERTICAL LENGTH OF PADDLE	6.5" (16.5cm)	7.25" (19.1cm)	8" (20.3cm)

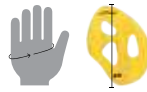
Black circles on lower half of paddles show size: S [•], M [••], L [•••]



ISO PADDLES

SIZE	S [04]	M [05]
HAND CIRCUMFERENCE	7" (17.5cm)	7"-8" (17.5cm-20cm)
VERTICAL LENGTH OF PADDLE	6.5" (160mm)	7.25" (185mm)

Black circles on lower half of paddles show size: S [•], M [••]



INSTINCT PADDLES

SIZE	M [05]	L [06]
HAND CIRCUMFERENCE	7.5" or Less (19cm or Less)	7.5" or More (19cm or More)

Black circles on lower half of paddles show size: M [••], L [•••]



FINIS, Inc.

7085-E Las Positas Rd
Livermore, CA 94551



For pricing, visit us at FINISswim.com
or contact a local distributor.

PHONE	925.454.0111
TOLL FREE	888.333.4647
EU PHONE	+359 2 936 86 36
FAX	925.454.0066
EMAIL	info@FINISinc.com

FINISswim.com



| @FINISswim & @FINISmermaids



| @FINISinc



| @FINISswim

Available in over 65 countries



SWIM



SWAM



AMERICAN SWIMMING
COACHES ASSOCIATION



U.S. MASTERS
SWIMMING

