

www.eldan.pl



QUALITY MEDICAL
CLOTHING & FOOTWEAR FOR
HEALTHCARE PROFESSIONALS

ul. Wojska Polskiego 3, 39-300 Mielec, Poland

tel. +48 17 774 57 30, +48 17 774 57 50

e-mail: sales@eldan.pl, biuro@eldan.pl



13th edition 2019/2020

Ladies and Gentleman,

We are pleased to present the new catalog with Eldan products for the 13th time. We believe that this 13 edition is very special because it is the result of hard work; passion and commitment of many people. We also believe that knowledge and experience gained over the years will help to meet customers' expectations and guarantee the highest quality of our products.

Traditionally, in the latest collection we introduce new models for men and women. Our clothes are made from several types of fabrics, including stretch and polyester. Main type of material used for clothing production is supreme Italian fabric made of 50% cotton and 50% polyester which has UE certificates confirming the highest quality. In addition, our offer also includes clothing made of 100% cotton, printed with fancy colorful design such as this year's new color - teeth pattern.

As a complete novelty, we introduce light and breathable fabric used for t-shirts and polo blouses. This material made of cotton and polyester, in half-and-half proportions, has very unique combination of fibers allowing clothes to breath, making it durable and easy-care at the same time.

In our latest offer ladies will also find a completely new model of fitness trousers. Innovative blend of cotton and lycra fibers makes the material stretchy and adjustable to any type of a figure. We hope that this model of trousers will be appreciated by clients who value comfort and convenience at work.

We also encourage you to take the advantage of a wide range of footwear for professionals. All shoe models are handmade from natural leather. Attention to detail and carefully planned production process guarantee the highest quality and making it durable and easy-care at the same time. Rich selection of models in many different colors, including leathers in colorful patterns, will satisfy even the most demanding customers.

In order to provide the highest production standards we have implemented ERP -efficiently operating system and ISO 9000: 2015 quality management systems. Such standardizations guarantee constant improvement of product, sales and service quality. With no doubts, Eldan products provide comfort, functionality, durability and aesthetic appearance. Moreover, constantly expanding, modified and modernized offer help our customers to build up self-convenience and makes work more pleasurable. We encourage you to continue successful cooperation and wish you all the best.

Danuta Katarzyna Dziura

Elżbieta Burkiewicz



The actual clothes colors may vary slightly from the colours in the pictures.

CONTENTS

Women's clothes

Blouse EMA - new item!	4-5
Blouse HANA - new item!	6-7
Blouse KAMILA - new item!	8-9
WOMEN'S T-SHIRT - new item!	10-11
Blouse/Dress/Coat ADELA	12
Blouse DARIA	13
Blouse AGATA	14-15
Blouse ANIA	16-17
Tunic BOGNA	18-19
Blouse/Dress DANA	20-21
Blouse/Dress EWA	22-23
Blouse/Dress FLORA	24-25
Blouse GRACJA	26
Dress INEZ	27
Blouse IGA	28-29
Blouse JULIA	30
Coat KAROLINA	31
Blouse/Dress KINGA	32-33
Blouse KLARA	34
Blouse KORA	35
Blouse/Dress LAURA	36-37
Blouse/Dress LENA	38-39
Blouse/Dress LILY	40-41
Blouse LIZA	42
Blouse MIKO	43
Coat MAJA	44
Blouse/Coat NICOL	45
Blouse MELA	46-47
Dress OLIWIA	48
Blouse ZOJA	49
Blouse PAULA	50-51
Blouse/Dress RÓŻA	52-53
Blouse SISI	54-55
Blouse SONIA	56-57
Blouse TOLA	58-59
Sleeveless fleece EMI/ fleece blouse NELI	60-61

Skirts 62

Women's trousers 62-65

Menswear

Blouse KAMIL - new item!	68
MEN'S T-SHIRT - new item!	69
Blouse ADAM	70-71
Blouse GUCIO	72
Blouse IGOR	73
Blouse JACEK	74
Blouse KRZYSZTOF	75
Blouse MAREK	76-77
Blouse OLAF	78-79
Blouse PAWEŁ	80
Blouse SZYMON	81
Fleece blouse VALDI	82
MEN'S COATS	83

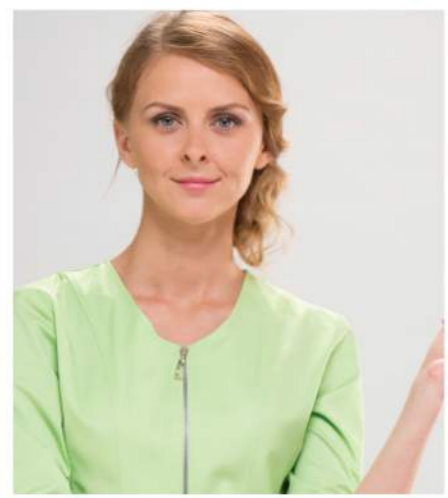
Men's trousers 84-85

Caps 85

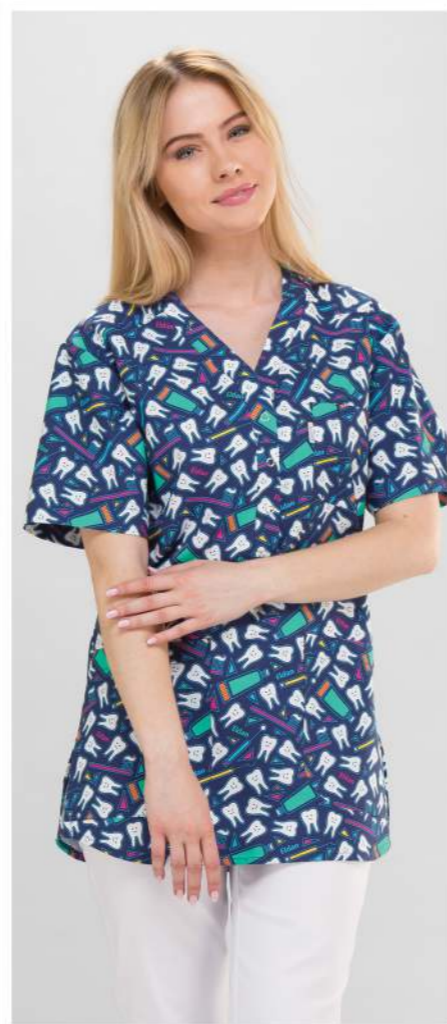
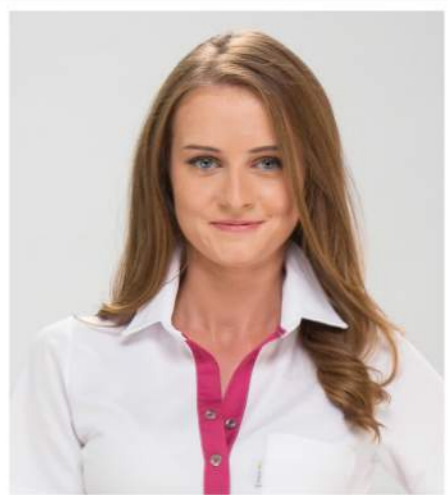
Information 86

Women's medical shoes 87-105

Men's medical shoes 106-108



New models



Women's clothes





new item

①
Art. N° 1111

Blouse EMA

Blouse EMA - new item!

1. short sleeve: **art. N° 1111**
2. long sleeve: **art. N° 1112**

total length: 71 cm (+/- 2 cm)

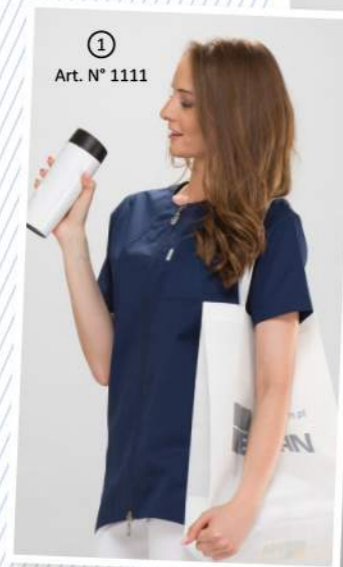
3. **art. N° 1401** - women's trousers
CARGO - new item! (see page 63)

Blouse EMA
available in colours:

K001	K002	K006	K016
K017	K019	K020	K021
K022	K023		



①
Art. N° 1111



①
Art. N° 1111



①
Art. N° 1111

②
Art. N° 1112



①
Art. N° 1111



②
Art. N° 1112

③
Art. N° 1401

new item



①
Art. N° 1111

④
Art. N° 453

Practical
double-side zipper



①
Art. N° 1111

③
Art. N° 1401

new item



①
Art. N° 1111

Women's trousers
Cargo

KD MED. 109



②
Art. N° 1112

①
Art. N° 1111

new item

Women's trousers
Cargo

③
Art. N° 1401

Women's trousers
**Skinny fit
with stretch fabric**

④
Art. N° 453



KD MED. 64

Women's trousers
Cargo

③
Art. N° 1401



new item



new item

①
Art. N° 1113

Blouse HANA

Blouse HANA - new item!

1. short sleeve: **art. N° 1113**
total length: 72 cm (+/- 2 cm)

2. **CAP** (see page 85)

3. **art. N° 442 - women's trousers**
SKINNY FIT (see page 65)

4. **art. N° 1402 - women's trousers**
FITNESS - new item! (see page 62)

5. **art. N° 1401 - women's trousers**
CARGO - new item! (see page 63)

new pattern



①
Art. N° 1113



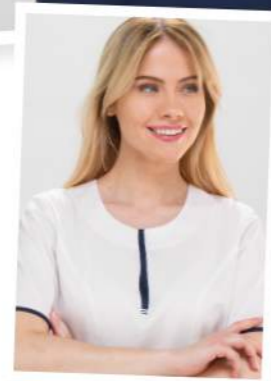
①
Art. N° 1113

③
Art. N° 442

Women's trousers
Skinny fit



①
Art. N° 1113



Blouse HANA available in colours:

K001	K001 /K002	K001 /K006	K001 /K017	K001 /K020
K001 /K022	K001 /K023	K006 /K023	K017 /K001	K020 /K017



PATTERN 2 PATTERN 4 PATTERN 5 PATTERN 6

new item

new item

Women's trousers
Cargo

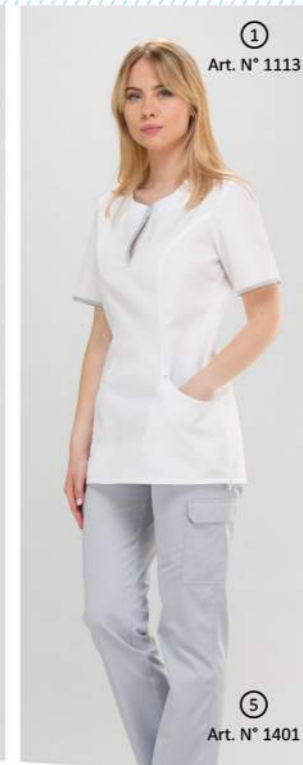
⑤
Art. N° 1401

zipper allowing comfortable
dressing and undressing



①
Art. N° 1113

④
Art. N° 1402



①
Art. N° 1113

⑤
Art. N° 1401



①
Art. N° 1113

⑤
Art. N° 1401



①
Art. N° 1113

⑤
Art. N° 1401



①
Art. N° 1113



①
Art. N° 1113



①
Art. N° 1113



①
Art. N° 1113



Blouse KAMILA

new item



Blouse KAMILA - new item!
1. short sleeve: **art. N° 1115**
total length: 65 cm (+/- 2 cm)

2. **art. N° 1401** - women's trousers **CARGO** - new item! (see page 63)

3. **art. N° 1116** - blouse **KAMIL** - new item! (see page 68)

4. **art. N° 431** - men's trousers **WITH STRETCH FABRIC** (see page 85)

5. **art. N° 442** - women's trousers **SKINNY FIT** (see page 65)

KD MED. 64

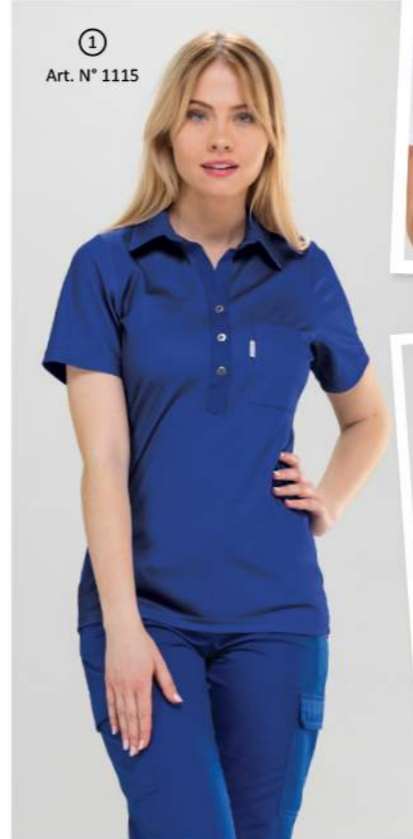
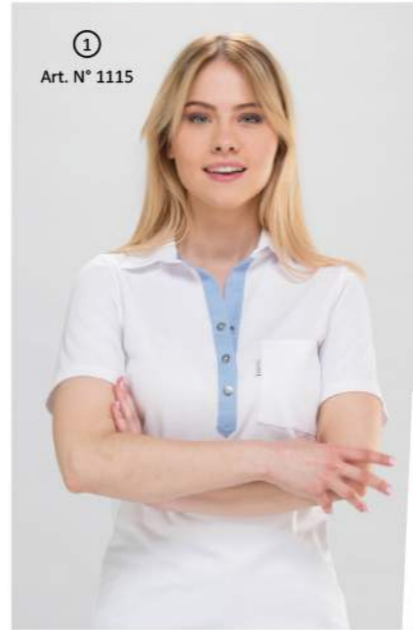
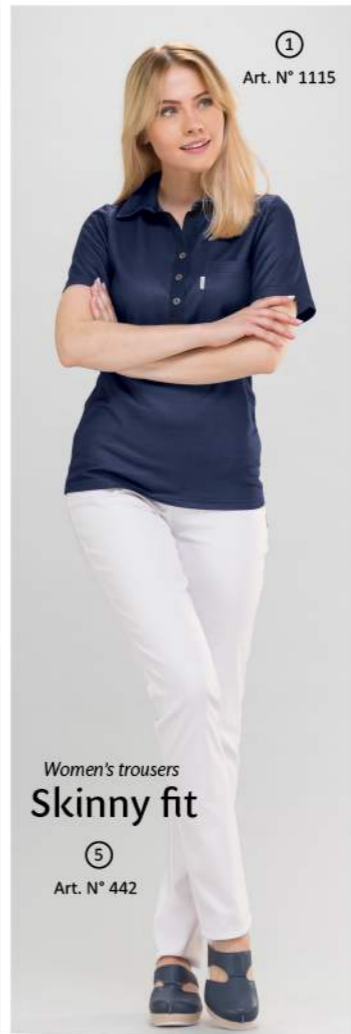
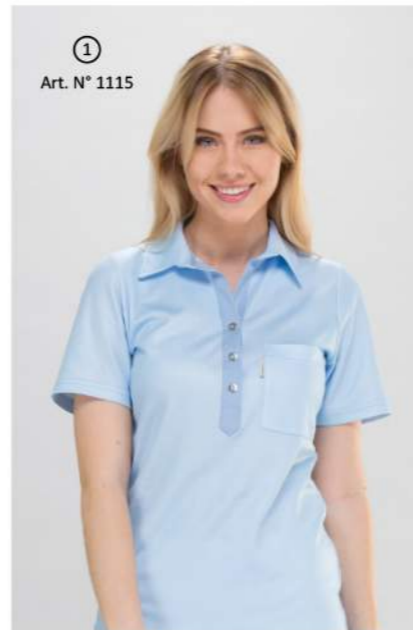


Women's trousers **Cargo**

Art. N° 1401

new item

KD MED. 109



KD MED. 110

Blouse KAMILA
available in colours:

K001	K002	K006	K017
K022	K023	K090	
K001 /K002	K001 /K006	K001 /K017	
K001 /K020	K001 /K021	K001 /K023	

Women's T-SHIRT

WOMEN'S T-SHIRT - new item!

- 1. short sleeve: **art. N° 1117**
total length: 65 cm (+/- 2 cm)
- 2. **art. N° 1402** - women's trousers
FITNESS - new item! (see page 62)
- 3. **art. N° 1118** - men's T-SHIRT
- new item! (see page 69)
- 4. **art. N° 431** - men's trousers
WITH STRETCH FABRIC (see page 85)
- 5. **art. N° 453** - women's trousers
SKINNY FIT WITH STRETCH FABRIC
(see page 65)
- 6. **art. N° 434** - men's trousers
SPORTY (see page 84)
- 7. **art. N° 1401** - women's trousers
CARGO - new item! (see page 63)



①
Art. N° 1117



Women's trousers **Skinny fit with stretch fabric**

①
Art. N° 1117

⑤
Art. N° 453



①
Art. N° 1117

Men's T-SHIRT

③
Art. N° 1118

Women's trousers **Fitness**

②
Art. N° 1402

④
Art. N° 431



①
Art. N° 1117

Women's trousers **Cargo**

⑦
Art. N° 1401

new item



①
Art. N° 1117



①
Art. N° 1117

Women's trousers **Cargo**

⑦
Art. N° 1401

new item



new item

③
Art. N° 1118

①
Art. N° 1117

⑥
Art. N° 434

Men's trousers **Sporty**

②
Art. N° 1402
new item

Women's trousers **Fitness**



a complete offer of women's footwear on pages 87-105

WOMEN'S T-SHIRT available in colours:

K001

K002

K006

K017

K022

K023

K090

Blouse/Dress/Coat ADELA



②
Art. N° 139



③
Art. N° 238



⑤
Art. N° 338



KD MED. 13



②
Art. N° 139

①
Art. N° 138

⑦
Art. N° 456

Women's trousers
Dandy



④
Art. N° 239

⑥
Art. N° 339

Blouse ADELA
1. short sleeve: **art. N° 138**
2. long sleeve, adjustable to ¾ sleeve: **art. N° 139**
total length: 74 cm (+/- 2 cm)

Dress ADELA
3. short sleeve: **art. N° 238**
4. long sleeve, adjustable to ¾ sleeve: **art. N° 239**
total length: 95 cm (+/- 2 cm)

Coat ADELA
5. short sleeve: **art. N° 338**
6. long sleeve, adjustable to ¾ sleeve: **art. N° 339**
total length: 108 cm (+/- 2 cm)

7. **art. N° 456** - women's trousers
DANDY (see page 63)

K001

Blouse/Dress/Coat ADELA available in colour:

The actual clothes colors may vary slightly from the colours in the pictures.

Blouse DARIA



①
Art. N° 167



①
Art. N° 167



①
Art. N° 167



①
Art. N° 167

Women's trousers
Skinny fit

②
Art. N° 442

Blouse DARIA
1. short sleeve: **art. N° 167**
total length: 69 cm (+/- 2 cm)
KD MED. 106

KD MED. 106



①
Art. N° 167

Women's trousers
Skinny fit

②
Art. N° 442



①
Art. N° 167

④
Art. N° 453



①
Art. N° 167

KD MED. 11

Blouse DARIA
available
in colours:

K001	K002
K018	K019
K020	K021
K022	K023

The actual clothes colors may vary slightly from the colours in the pictures.

Blouse AGATA

Blouse AGATA

1. short sleeve: art. N° 159
total length: 74 cm (+/- 2 cm)

2. art. N° 452 - women's trousers
UNIVERSAL (see page 63)

3. art. N° 457 - women's trousers
COMFORT (see page 64)



①
Art. N° 159

②
Art. N° 452

Women's trousers
Universal



①
Art. N° 159



①
Art. N° 159

4. art. N° 442 - women's trousers
SKINNY FIT (see page 65)

5. art. N° 454 - women's trousers
CYGARETKI (see page 65)

6. art. N° 132 - blouse **KRZYSZTOF**
(see page 75)

7. art. N° 430 - men's trousers
STRAIGHT (see page 84)

fabric patterns

PATTERN 1



PATTERN 2



PATTERN 4



PATTERN 5



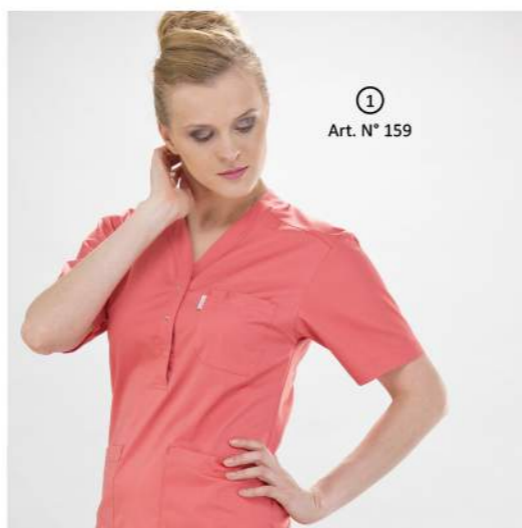
PATTERN 6



new item



CAP



①
Art. N° 159



①
Art. N° 159



①
Art. N° 159

③
Art. N° 457

Women's trousers
Comfort



①
Art. N° 159

KD MED. 101



④
Art. N° 442



①
Art. N° 159



①
Art. N° 159

Blouse AGATA available in colours:



①
Art. N° 159

new pattern



①
Art. N° 159

⑤
Art. N° 454



⑥
Art. N° 132

①
Art. N° 159

⑦
Art. N° 430

③
Art. N° 457

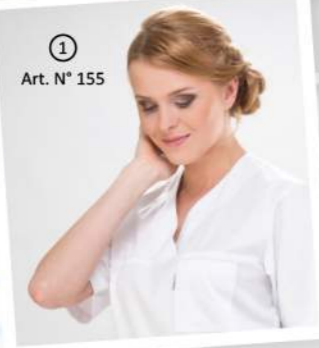
Blouse ANIA



① Art. N° 155



① Art. N° 155



① Art. N° 155

Blouse ANIA
1. short sleeve: art. N° 155
total length: 75 cm (+/- 2 cm)

2. art. N° 1401 - women's trousers
CARGO - new item! (see page 63)

3. art. N° 132 - blouse **KRZYSZTOF**
(see page 75)



① Art. N° 155

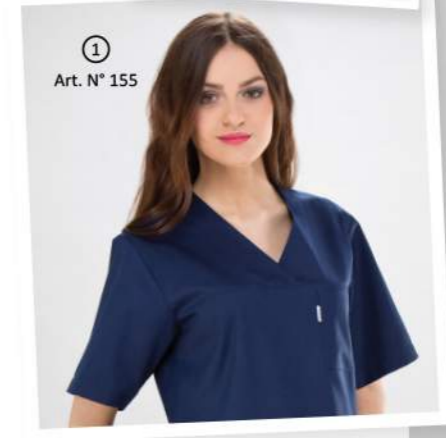


① Art. N° 155

Blouse ANIA available in colours:



① Art. N° 155



① Art. N° 155



new item



① Art. N° 155

new pattern

② Art. N° 1401

new item
Women's trousers
Cargo



① Art. N° 155



① Art. N° 155



① Art. N° 155



③ Art. N° 132

Blouse
KRZYSZTOF

① Art. N° 155



① Art. N° 155



① Art. N° 155

Tunic BOGNA

Tunic BOGNA

- 1. short sleeve: art. N° 242
- 2. ¾ sleeve: art. N° 243

total length: 85 cm (+/- 2 cm)

3. art. N° 442 - women's trousers
SKINNY FIT (see page 65)

4. art. N° 452 - women's trousers
UNIVERSAL (see page 63)

5. art. N° 454 - women's trousers
CYGARETKI (see page 65)

6. art. N° 198 - blouse
SZYMON (see page 81)

KD MED. 66/P



Tunic BOGNA
available in colours:

K001	K006	K008
K014	K016	K017
K018	K019	K020
K021	K022	K023

Blouse/Dress DANA

①
Art. N° 176



②
Art. N° 276



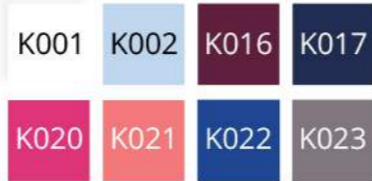
Blouse DANA
1. short sleeve: art. N° 176
total length: 76 cm (+/- 2 cm)

Dress DANA
2. short sleeve: art. N° 276
total length: 92 cm (+/- 2 cm)

3. art. N° 442 - women's trousers
SKINNY FIT (see page 65)

4. art. N° 1401 - women's trousers
CARGO - new item! (see page 63)

Blouse/Dress DANA
available in colours:



①
Art. N° 176



②
Art. N° 276



②
Art. N° 276



②
Art. N° 276

①
Art. N° 176



③
Art. N° 442

Women's trousers
Skinny fit

①
Art. N° 176



①
Art. N° 176



④
Art. N° 1401

Women's trousers
Cargo

new item



KD MED. 111

①
Art. N° 176



①
Art. N° 176



②
Art. N° 276



KD MED. 110



KD MED. 107

Blouse/Dress EWA



②
Art. N° 108



①
Art. N° 107



①
Art. N° 107

Blouse EWA available in colours:

K001	K002	K008	K016	K017	K018
K019	K020	K021	K022	K023	

Women's trousers
With stretch fabric

⑤
Art. N° 439



①
Art. N° 107



①
Art. N° 107



KD MED. 59

Dress EWA
available in colours:

K001	K002	K018	K019	K022
------	------	------	------	------



③
Art. N° 207



③
Art. N° 207



KD MED. 109

Blouse EWA
1. short sleeve: art. N° 107
2. long sleeve: art. N° 108
total length: 74 cm (+/- 2 cm)

Dress EWA
3. short sleeve: art. N° 207
4. long sleeve: art. N° 208
total length: 97 cm (+/- 2 cm)



①
Art. N° 107

②
Art. N° 108

5. art. N° 439 - women's trousers
WITH STRETCH FABRIC (see page 64)

6. art. N° 442 - women's trousers
SKINNY FIT (see page 65)



④
Art. N° 208



③
Art. N° 207



①
Art. N° 107



①
Art. N° 149

Blouse/Dress FLORA

Blouse FLORA

- 1. short sleeve: art. N° 149
- 2. long sleeve: art. N° 150
- total length: 75 cm (+/- 2 cm)

Dress FLORA

- 3. short sleeve: art. N° 249
- 4. long sleeve: art. N° 250
- total length: 99 cm (+/- 2 cm)

5. art. N° 442 - women's trousers
SKINNY FIT (see page 65)

6. art. N° 456 - women's trousers
DANDY (see page 63)

7. art. N° 457 - women's trousers
COMFORT (see page 64)

Blouse/Dress FLORA
available in colours:

K001	K002	K006
K017	K018	K019
K020	K021	K023



③
Art. N° 249



③
Art. N° 249



②
Art. N° 150

④
Art. N° 250



③
Art. N° 249



⑤
Art. N° 442

①
Art. N° 149

⑥
Art. N° 456



④
Art. N° 250



①
Art. N° 149



①
Art. N° 149



①
Art. N° 149

⑥
Art. N° 456

Women's trousers
Dandy

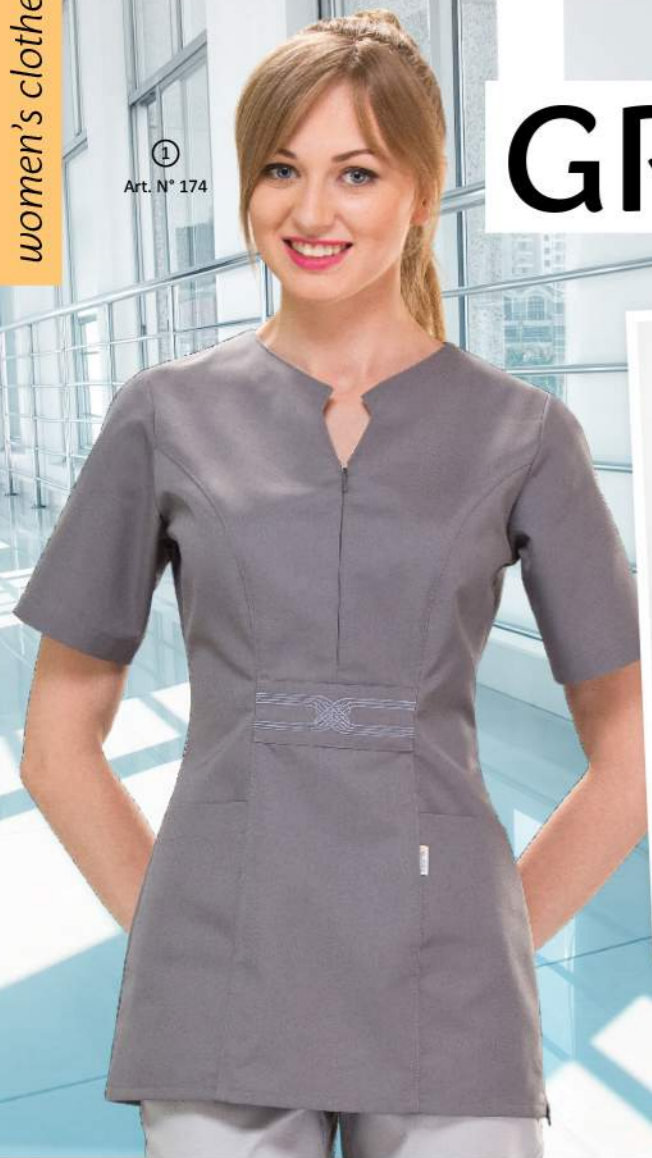
⑤
Art. N° 442

⑦
Art. N° 457



KD MED. 66

Blouse GRACJA



① Art. N° 174



① Art. N° 174



① Art. N° 174



① Art. N° 174

① Art. N° 174



① Art. N° 174

② Art. N° 456



① Art. N° 174

② Art. N° 456

Women's trousers
Dandy

Blouse GRACJA
1. short sleeve: art. N° 174
total length: 72 cm (+/- 2 cm)

2. art. N° 456 - women's trousers
DANDY (see page 63)



KD MED. 110

Blouse GRACJA available in colours:



Dress INEZ



① Art. N° 275



① Art. N° 275



① Art. N° 275

Dress INEZ
1. short sleeve: art. N° 275
total length: 93 cm (+/- 2 cm)

Dress INEZ available in colours:



① Art. N° 275

① Art. N° 275



① Art. N° 275

KD MED. 11



①
Art. N° 1105

Blouse IGA

Blouse IGA

- 1. short sleeve: art. N° 1105
- 2. ¾ sleeve: art. N° 1106
- total length: 69 cm (+/- 2 cm)

3. art. N° 442 - women's trousers
SKINNY FIT (see page 65)

4. art. N° 455 - women's trousers
PUSH-UP (see page 65)

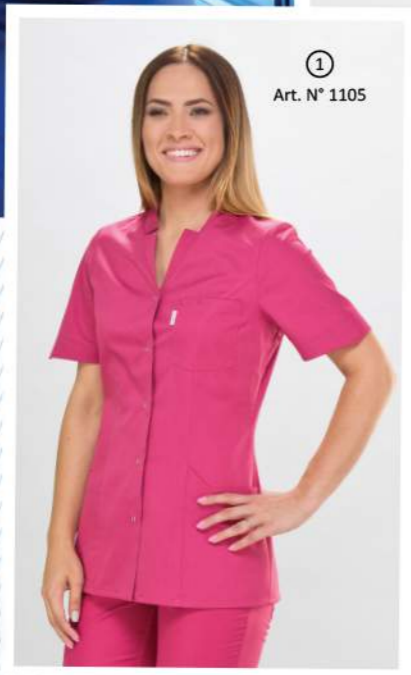


KD MED. 103

KD MED. 101



②
Art. N° 1106



①
Art. N° 1105



①
Art. N° 1105

③
Art. N° 442

Women's trousers
Skinny fit



②
Art. N° 1106



KD MED. 101



①
Art. N° 1105



②
Art. N° 1106

③
Art. N° 442



①
Art. N° 1105

④
Art. N° 455

Women's trousers
Push-up

KD MED. 57

Blouse IGA
available in colours:

K001	K002	K006
K017	K019	K020
K021	K022	K023



Blouse JULIA

- Blouse JULIA**
 1. short sleeve: art. N° 142
 total length: 72 cm (+/- 2 cm)
 2. art. N° 442 - women's trousers
SKINNY FIT (see page 65)
 3. art. N° 542 - skirt **SPORTY**
 (see page 62)
 4. art. N° 454 - women's trousers
CYGARETKI (see page 65)



Women's trousers
Skinny fit

Blouse JULIA
available in colours:

K001	K002	K017	K018	K019
K020	K021	K022	K023	



Coat KAROLINA



CAPS
available in colours:



Caps

- Coat KAROLINA**
 1. long sleeve: art. N° 305
 total length: 104 cm (+/- 2 cm)
 2. art. N° 442 - women's trousers
SKINNY FIT (see page 65)
 3. art. N° 452 - women's trousers
UNIVERSAL (see page 63)
 4. **CAPS**
 two sizes available:
SMALL: head circumference 56-60 cm
LARGE: head circumference 60-64 cm

Coat KAROLINA
available in colours:

K001	K012	K023
------	------	------

Blouse/Dress KINGA



① Art. N° 163

③ Art. N° 452

Women's trousers
Universal

Blouse/Dress KINGA
available in colours:

K001	K002	K008	K014
K016	K017	K018	K019
K020	K021	K022	K023



① Art. N° 163



① Art. N° 163

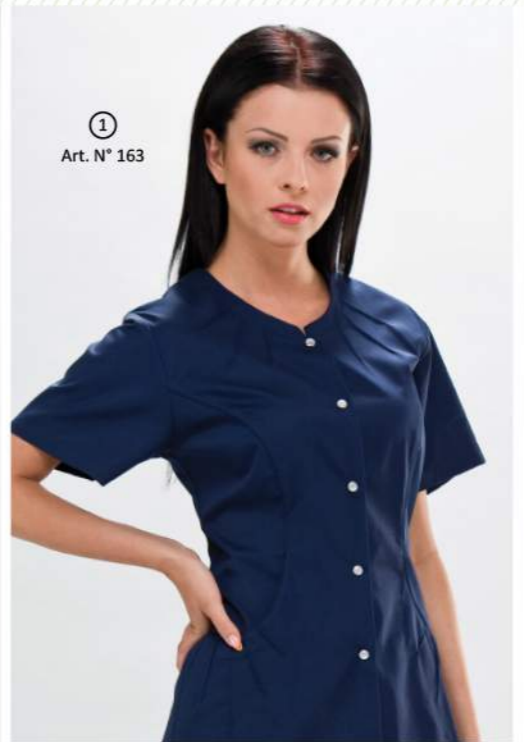


KD MED. 111



① Art. N° 163

③ Art. N° 452



① Art. N° 163

Blouse KINGA
1. short sleeve: art. N° 163
total length: 66 cm (+/- 2 cm)

Dress KINGA
2. short sleeve: art. N° 263
total length: 97 cm (+/- 2 cm)

3. art. N° 452 - women's trousers
UNIVERSAL (see page 63)

4. art. N° 453 - women's trousers **SKINNY FIT WITH STRETCH FABRIC** (see page 65)



① Art. N° 163

① Art. N° 163

④ Art. N° 453

Women's trousers
Skinny fit with stretch fabric



② Art. N° 263

② Art. N° 263



① Art. N° 163

④ Art. N° 453



② Art. N° 263



① Art. N° 163



② Art. N° 263



②
Art. N° 1104

Blouse KLARA



①
Art. N° 1103

Blouse KLARA
1. short sleeve: art. N° 1103
2. ¾ sleeve: art. N° 1104
total length: 73 cm (+/- 2 cm)

3. art. N° 454 - women's trousers
CYGARETKI (see page 65)

4. art. N° 458 - women's trousers
BREECHES (see page 65)



KD MED. 68



②
Art. N° 1104

③
Art. N° 454

Women's trousers
Cygaretki



①
Art. N° 1103

②
Art. N° 1104

①
Art. N° 1103

①
Art. N° 1103

④
Art. N° 458

Blouse KLARA
available in colours:

K001 K002 K016 K017 K020 K022 K023



②
Art. N° 182

Blouse KORA



①
Art. N° 181

Blouse KORA
1. short sleeve: art. N° 181
2. long sleeve: art. N° 182
total length: 73 cm (+/- 2 cm)

3. art. N° 455 - women's trousers
PUSH-UP (see page 65)

4. art. N° 442 - women's trousers
SKINNY FIT (see page 65)



①
Art. N° 181



①
Art. N° 181

④
Art. N° 442



①
Art. N° 181

④
Art. N° 442



①
Art. N° 181

Women's trousers
Push-up

③
Art. N° 455

KD MED. 72

Blouse KORA
available in colours:

K001 K002 K008 K017
K018 K019 K020 K021 K023

Blouse/Dress LAURA



①
Art. N° 171



②
Art. N° 172

⑤
Art. N° 454



③
Art. N° 271



KD MED. 59



①
Art. N° 171



②
Art. N° 172

Blouse LAURA
1. short sleeve: art. N° 171
2. long sleeve: art. N° 172
total length: 69 cm (+/- 2 cm)

Dress LAURA
3. short sleeve: art. N° 271
4. long sleeve: art. N° 272
total length: 98 cm (+/- 2 cm)

5. art. N° 454 - women's trousers
CYGARETKI (see page 65)

6. art. N° 452 - women's trousers
UNIVERSAL (see page 63)

The actual clothes colors may vary slightly from the colours in the pictures.



①
Art. N° 171



①
Art. N° 171

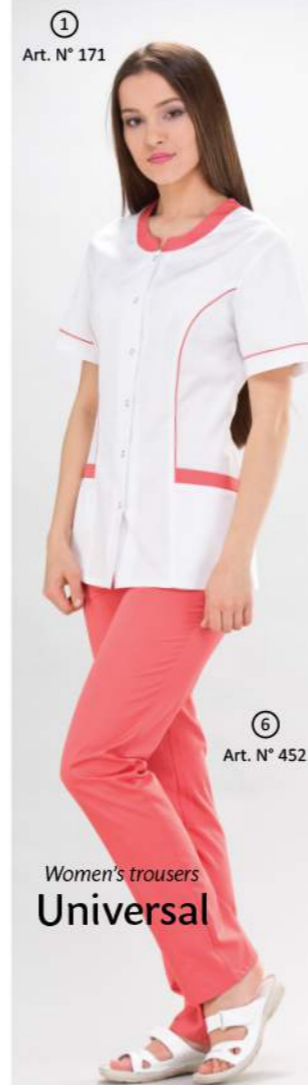
⑥
Art. N° 452



④
Art. N° 272



③
Art. N° 271



①
Art. N° 171

⑥
Art. N° 452

Women's trousers
Universal

7. art. N° 456 - women's trousers
DANDY (see page 63)

8. art. N° 127 - blouse **OLAF**
(see page 78-79)

9. art. N° 460 - men's trousers
UNIVERSAL (see page 84)

Blouse/Dress LAURA
available in colours:

K001	K001 /K002	K001 /K006
K001 /K017	K001 /K019	K001 /K020
K001 /K021	K001 /K022	K001 /K023



⑦
Art. N° 456

KD MED. 66/P



②
Art. N° 172

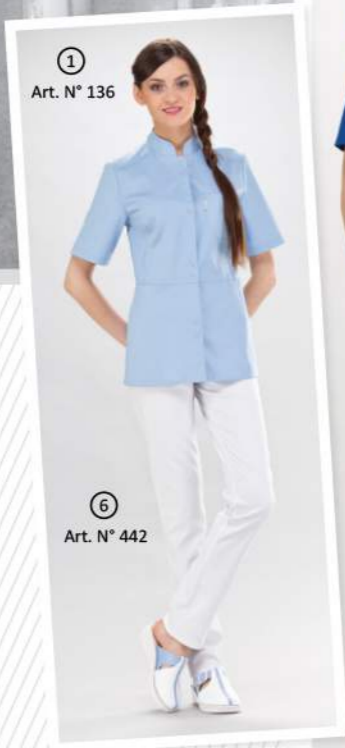
Blouse
OLAF
⑧
Art. N° 127

①
Art. N° 171

⑨
Art. N° 460

The actual clothes colors may vary slightly from the colours in the pictures.

Blouse/Dress LENA



Blouse LENA
 1. short sleeve: **art. N° 136**
 2. long sleeve, adjustable to ¾ sleeve: **art. N° 137**
 total length: 72 cm (+/- 2 cm)

Dress LENA
 3. short sleeve: **art. N° 236**
 4. long sleeve, adjustable to ¾ sleeve: **art. N° 237**
 total length: 92 cm (+/- 2 cm)

5. **art. N° 454** - women's trousers **CYGARETKI** (see page 65)
 6. **art. N° 442** - women's trousers **SKINNY FIT** (see page 65)

7. **art. N° 455** - women's trousers **PUSH-UP** (see page 65)

Blouse/Dress LENA available in colours:



Women's trousers
Cygaretki

The actual clothes colors may vary slightly from the colours in the pictures.

The actual clothes colors may vary slightly from the colours in the pictures.

Blouse/Dress LILY



Blouse LILY
 1. short sleeve: **art. N° 183**
 2. ¾ sleeve: **art. N° 184**
 total length: 73 cm (+/- 2 cm)

Dress LILY
 3. short sleeve: **art. N° 283**
 4. ¾ sleeve: **art. N° 284**
 total length: 95 cm (+/- 2 cm)



The actual clothes colors may vary slightly from the colours in the pictures.



5. **art. N° 440** - women's trousers **SMART** (see page 63)

6. **art. N° 456** - women's trousers **DANDY** (see page 63)

7. **art. N° 455** - women's trousers **PUSH-UP** (see page 65)



Women's trousers **Push-up**

Blouse/Dress LILY available in colours:

K001 /K001	K001 /K006	K001 /K008	K001 /K016	K001 /K017
K001 /K018	K001 /K020	K001 /K022	K001 /K023	
K017 /K001	K022 /K001	K023 /K001	K021 /K017	

The actual clothes colors may vary slightly from the colours in the pictures.



①
Art. N° 177

③
Art. N° 442

Blouse LIZA

- Blouse LIZA**
 1. short sleeve: **art. N° 177**
 2. long sleeve: **art. N° 178**
 total length: 66 cm (+/- 2 cm)
3. **art. N° 442** - women's trousers
SKINNY FIT (see page 65)
4. **art. N° 455** - women's trousers
PUSH-UP (see page 65)
5. **art. N° 161** - blouse **JACEK**
 (see page 74)
6. **art. N° 440** - women's trousers
SMART (see page 63)



①
Art. N° 177



②
Art. N° 178



⑥
Art. N° 440



①
Art. N° 177

②
Art. N° 178

③
Art. N° 442

Women's trousers
Skinny fit

④
Art. N° 455



②
Art. N° 178



①
Art. N° 177

⑤
Art. N° 161

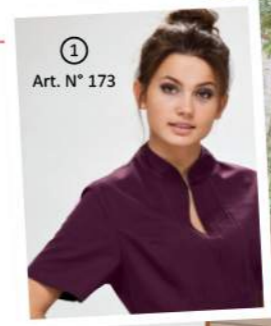
Blouse **JACEK**

Blouse LIZA available in colours:

K001	K002	K017	K018	K019
K020	K021	K022	K023	

Blouse MIKO

- Blouse MIKO**
 1. short sleeve: **art. N° 173**
 total length: 76 cm (+/- 2 cm)
2. **art. N° 442** - women's trousers
SKINNY FIT (see page 65)
3. **art. N° 452** - women's trousers
UNIVERSAL (see page 63)



①
Art. N° 173



①
Art. N° 173

①
Art. N° 173



①
Art. N° 173

Blouse MIKO available in colours:

K001	K002	K006	K008	K014	K016	K017
K018	K019	K020	K021	K022	K023	



①
Art. N° 173

②
Art. N° 442



KD MED. 104



①
Art. N° 173



②
Art. N° 442



③
Art. N° 452



③
Art. N° 452



①
Art. N° 173

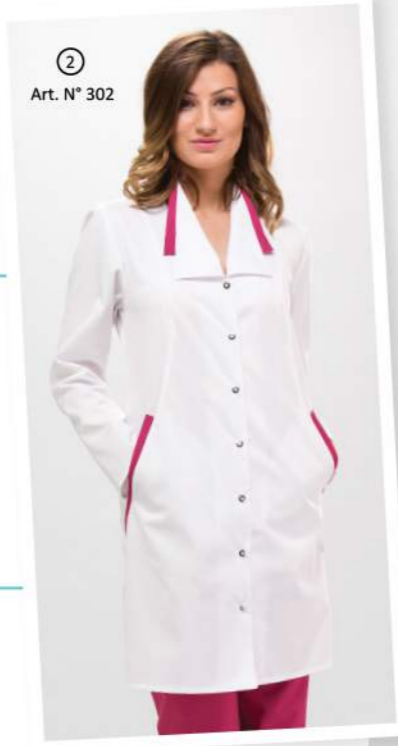
Coat MAJA

Coat MAJA
 1. ¾ sleeve: art. N° 301
 2. long sleeve: art. N° 302
 total length: 90 cm (+/- 2 cm)

3. art. N° 454 - women's trousers
CYGARETKI (see page 65)

4. art. N° 442 - women's trousers
SKINNY FIT (see page 65)

Coat MAJA available in colours:



Women's trousers
Cygaretki

Art. N° 454

Blouse/Coat NICOL

Blouse NICOL
 1. short sleeve: art. N° 189
 2. long sleeve: art. N° 190
 total length: 70 cm (+/- 2 cm)

Coat NICOL
 3. short sleeve: art. N° 389
 4. long sleeve: art. N° 390
 total length: 97 cm (+/- 2 cm)

5. art. N° 456 - women's trousers
DANDY (see page 63)

6. art. N° 442 - women's trousers
SKINNY FIT (see page 65)



Art. N° 456

Women's trousers
Dandy



Art. N° 190



Art. N° 389

Blouse/Coat NICOL
 available in colour:

K001



Art. N° 390

Art. N° 189

Art. N° 442
 Women's trousers
Skinny fit



KD MED. 68



Art. N° 302

Art. N° 301

Art. N° 301

Art. N° 442

Women's trousers
Skinny fit

Art. N° 442



Art. N° 302

KD MED. 109



①
Art. N° 1107

Blouse MELA

- Blouse MELA**
1. short sleeve: **art. N° 1107**
total length: 73 cm (+/- 2 cm)
 2. **art. N° 442** - women's trousers
SKINNY FIT (see page 65)
 3. **art. N° 458** - women's trousers
BREECHES (see page 64)
 4. **art. N° 456** - women's trousers
DANDY (see page 63)

Blouse MELA
available in colours:

K001	K002	K006	K017
K019	K020	K021	
K001/ K006	K001/ K017		
K001/ K019	K001/ K020	K001/ K022	



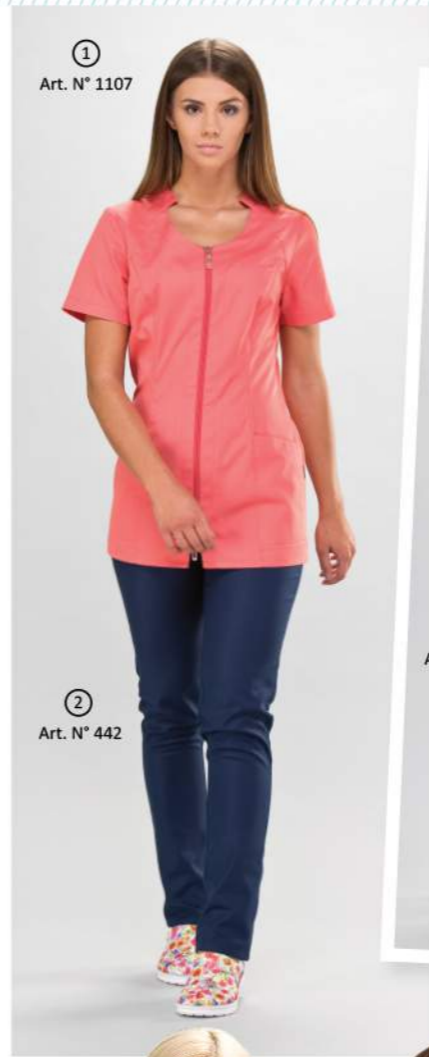
①
Art. N° 1107



①
Art. N° 1107



①
Art. N° 1107



①
Art. N° 1107

②
Art. N° 442



①
Art. N° 1107

①
Art. N° 1107

③
Art. N° 458

②
Art. N° 442



①
Art. N° 1107

Women's trousers
Skinny fit

②
Art. N° 442

KD MED. 27



①
Art. N° 1107

①
Art. N° 1107

②
Art. N° 442

④
Art. N° 456

Women's trousers
Skinny fit



KD MED. 105



① Art. N° 274

Dress OLIWIA

Dress OLIWIA

- 1. ¾ sleeve: **art. N° 274**
total length: 86 cm (+/- 2 cm)
- 2. **art. N° 454** - women's trousers
CYGARETKI (see page 65)
- 3. **art. N° 442** - women's trousers
SKINNY FIT (see page 65)
- 4. **art. N° 458** - women's trousers
BREECHES (see page 64)



KD MED. 12



KD MED. 101



① Art. N° 274

② Art. N° 454

Dress OLIWIA
available in colours:

- K001
- K002
- K006
- K017
- K020
- K022
- K023

Women's trousers
Cygaretki

② Art. N° 454

KD MED. 64



① Art. N° 274



① Art. N° 274

④ Art. N° 458



① Art. N° 274

Women's trousers
Skinny fit

③ Art. N° 442



① Art. N° 274

② Art. N° 454

Blouse ZOJA

Blouse ZOJA

- 1. short sleeve: **art. N° 1101**
total length: 75 cm (+/- 2 cm)
- 2. ¾ sleeve: **art. N° 1102**
total length: 75 cm (+/- 2 cm)
- 3. **art. N° 456** - women's trousers
DANDY (see page 63)
- 4. **art. N° 458** - women's trousers
BREECHES (see page 64)
- 5. **art. N° 454** - women's trousers
CYGARETKI (see page 65)
- 6. **art. N° 442** - women's trousers
SKINNY FIT (see page 65)



① Art. N° 1101



② Art. N° 1102



② Art. N° 1102



① Art. N° 1101



① Art. N° 1101

② Art. N° 1102



② Art. N° 1102

⑤ Art. N° 454



② Art. N° 1102

⑥ Art. N° 442



① Art. N° 1101

⑥ Art. N° 442

Blouse ZOJA
available in colours:

- K001
- K002
- K008
- K016
- K017
- K018
- K019
- K020
- K021
- K022
- K023



② Art. N° 1102

Women's trousers

Dandy

③ Art. N° 456

Women's trousers
Breeches

④ Art. N° 458

Blouse PAULA



Blouse PAULA

1. short sleeve: **art. N° 120**
total length: 74 cm (+/- 2 cm)

2. **art. N° 442** - women's trousers
SKINNY FIT (see page 65)

3. **art. N° 454** - women's trousers
CYGARETKI (see page 65)

4. **art. N° 458** - women's trousers
BREECHES (see page 64)

Blouse PAULA available in colours:



Pattern 2 Pattern 6
new item



The actual clothes colors may vary slightly from the colours in the pictures.

Blouse Paula
now available
in 2 different
patterns

①
Art. N° 120

③
Art. N° 454

①
Art. N° 120

①
Art. N° 120

②
Art. N° 442

Women's trousers
Skinny fit

①
Art. N° 120

④
Art. N° 458
Women's trousers
Breeches

②
Art. N° 442
Women's trousers
Skinny fit

①
Art. N° 120

Knitted inserts
at the back side providing
freedom of movement

The actual clothes colors may vary slightly from the colours in the pictures.

Blouse/Dress RÓŻA



5. art. N° 153 - blouse IGOR
(see page 73)

6. art. N° 430 - men's trousers
STRAIGHT (see page 84)

7. art. N° 442 - women's trousers
SKINNY FIT (see page 65)

8. art. N° 454 - women's trousers
CYGARETKI (see page 65)



Blouse RÓŻA
1. short sleeve: art. N° 179
2. ¾ sleeve: art. N° 180
total length: 66 cm (+/- 2 cm)

Dress RÓŻA
3. short sleeve: art. N° 279
4. ¾ sleeve: art. N° 280
total length: 96 cm (+/- 2 cm)



KD MED. 72



KD MED. 11

KD MED. 72



Blouse/Dress RÓŻA
available in colours:

K001	K001 /K017	K001 /K020	K001 /K023
K017 /K001	K020 /K017	K021 /K017	K023 /K006





①
Art. N° 1109

Blouse SISI

- Blouse SISI**
 1. short sleeve: **art. N° 1109**
 total length: 73 cm (+/- 2 cm)
2. **art. N° 442** - women's trousers
SKINNY FIT (see page 65)
3. **art. N° 453** - women's trousers
SKINNY FIT WITH STRETCH FABRIC
 (see page 65)
4. **art. N° 456** - women's trousers
DANDY - (see page 63)



KD MED. 106

Blouse SISI available in colours:

K001 K008 K017 K018 K020 K022



①
Art. N° 1109

②
Art. N° 442

Women's trousers
Skinny fit



①
Art. N° 1109

Women's trousers
**Skinny fit with
 stretch fabric**

③
Art. N° 453



KD MED. 101



KD MED. 108



KD MED. 111



①
Art. N° 1109



①
Art. N° 1109



①
Art. N° 1109

④
Art. N° 456

②
Art. N° 442

Women's trousers
Skinny fit

KD MED. 57

Blouse SONIA



① Art. N° 121

new pattern

Women's trousers
Cygaretki

② Art. N° 442

③ Art. N° 454



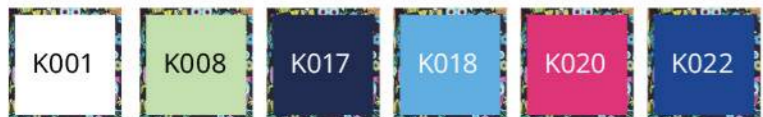
① Art. N° 121



④ Art. N° 458

Women's trousers
Breeches

Blouse SONIA available in colours:



new item



KD MED. 66



① Art. N° 121

④ Art. N° 458
Women's trousers
Breeches



① Art. N° 121



① Art. N° 121

① Art. N° 121

② Art. N° 442

Women's trousers
Skinny fit

⑤ Art. N° 456



① Art. N° 121

Blouse TOLA

Blouse TOLA
1. short sleeve: art. N° 119
total length: 70 cm (+/- 2 cm)

2. art. N° 453 - women's trousers
SKINNY FIT WITH STRETCH FABRIC
(see page 65)

3. art. N° 440 - women's trousers
SMART (see page 63)

4. art. N° 456 - women's trousers
DANDY (see page 63)



PATTERN 4



Art. N° 119



Art. N° 453
Women's trousers
Skinny fit
with stretch
fabric

Women's trousers **Comfort**



more trousers on pages 62-65



PATTERN 2



new pattern



Art. N° 119



PATTERN 5



PATTERN 6

Blouse TOLA available in colours:



new item

Sleeveless fleece/blouse EMI/NELI

Sleeveless fleece EMI

1. short sleeve: art. N° 705
total length: 66 cm (+/- 2 cm)

Fleece blouse NELI

2. long sleeve: art. N° 704
total length: 66 cm (+/- 2 cm)

3. art. N° 455 - women's trousers
PUSH-UP (see page 65)

4. art. N° 456 - women's trousers
DANDY (see page 63)

5. art. N° 442 - women's trousers
SKINNY FIT (see page 65)

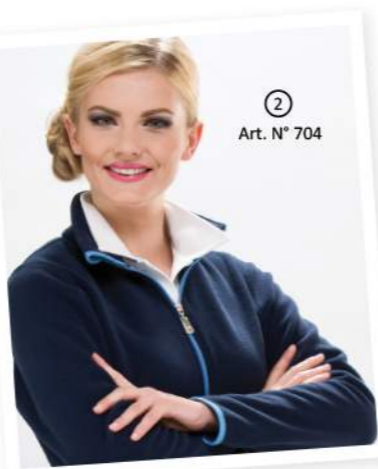
6. art. N° 703 - fleece blouse
VALDI (see page 82)



7. art. N° 460 - men's trousers
UNIVERSAL (see page 84)

8. art. N° 452 - women's trousers
UNIVERSAL (see page 63)

9. art. N° 453 - women's trousers
SKINNY FIT WITH STRETCH FABRIC
(see page 65)



Sleeveless fleece/blouse
EMI/NELI
available in colours:

K001	K001 /K017	K001 /K018	K001 /K020
K017	K017 /K001	K017 /K018	K017 /K020
K022	K022 /K001		



a complete offer
of women's footwear
on pages 87-105

KD MED. 04



CLASSIC Skirt Art. N° 541



Total length: 55 cm

SPORTY Skirt Art. N° 542



Total length - sizes XS-L: 55 cm, XL-XXL: 65 cm

Skirts: SPORTY & CLASSIC - FABRIC: 50% cotton, 50% polyester

* Colour K012 - FABRIC: 33% cotton, 67% polyester

Skirts: SPORTY, CLASSIC available in colours:

- K001
- K002
- K006
- K008
- K012*
- K014
- K016
- K017
- K018
- K019
- K020
- K021
- K022
- K023

PENCIL Skirt Art. N° 544



Total length: 55 cm

Skirt PENCIL

FABRIC: 33% cotton, 62% polyester, 5% elastene

PENCIL skirt

- available in colours:
- K001
 - K002
 - K006
 - K014
 - K017
 - K020
 - K023

Women's trousers FITNESS Art. N° 1402



new item

Women's trousers FITNESS

- available in colours:
- K001
 - K006
 - K017
 - K023

Women's trousers CARGO Art. N° 1401



new item

Women's trousers SMART Art. N° 440



Women's trousers DANDY Art. N° 456



Women's trousers UNIVERSAL Art. N° 452



Women's trousers CARGO, DANDY, SMART, UNIVERSAL
FABRIC: 50% cotton, 50% polyester

available in colours:

- K001
- K002
- K006
- K008
- K012*
- K014
- K016
- K017
- K018
- K019
- K020
- K021
- K022
- K023

* Colour K012 - FABRIC: 33% cotton, 67% polyester

Women's trousers

Women's trousers are available in sizes from XS to XXL.

In addition, each size of the trousers is available in three different leg lengths; for the heights of: 160 cm, 168 cm, 176 cm.*

In order to select the right size of the trousers, please refer to the sizes chart on the back cover.

* excluding CYGARETKI.



Women's trousers BREECHES Art. N° 458



Available colours page 65

Women's trousers CYGARETKI Art. N° 454



Women's trousers PUSH-UP Art. N° 455



Women's trousers COMFORT Art. N° 457



Women's trousers WITH STRETCH FABRIC Art. N° 439



Women's trousers COMFORT, WITH STRETCH FABRIC

FABRIC: 50% cotton, 50% polyester, stretch fabric: 89% cotton, 11% elastene

Available colours:



Women's trousers SKINNY FIT Art. N° 442



Women's trousers SKINNY FIT WITH STRETCH FABRIC Art. N° 453



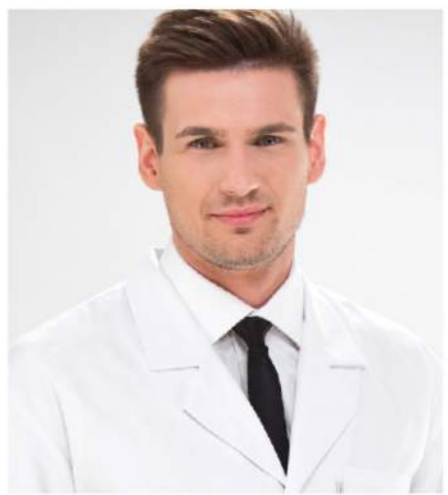
Women's trousers CYGARETKI, PUSH-UP, SKINNY FIT, SKINNY FIT WITH STRETCH FABRIC, BREECHES

FABRIC: 33% cotton, 62% polyester, 5% elastene

Available colours:



Menswear



new item

Blouse KAMIL

new item

①
Art. N° 1116



Men's trousers
Sporty

Blouse KAMIL - new item!
1. short sleeve: **art. N° 1116**

2. **art. N° 434** - men's trousers
SPORTY (see page 84)

3. **art. N° 1115** - blouse **KAMILA**
- new item! (see page 8-9)

4. **art. N° 431** - men's trousers
WITH STRETCH FABRIC
(see page 85)

Blouse KAMIL available in colours:

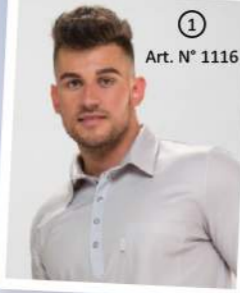
K001 K001 /K002 K001 /K006 K001 /K017 K001 /K023 K002 K006 K017 K023

①
Art. N° 1116

Blouse **KAMILA** **new item**



③
Art. N° 1115



①
Art. N° 1116



①
Art. N° 1116



①
Art. N° 1116



①
Art. N° 1116

new item
③
Art. N° 1115



①
Art. N° 1116



①
Art. N° 1116

④
Art. N° 431

Men's T-SHIRT

new item

①
Art. N° 1118



②
Art. N° 431

- MEN'S T-SHIRT - new item!**
1. short sleeve: **art. N° 1118**
 2. **art. N° 431** - men's trousers **WITH STRETCH FABRIC** (see page 85)
 3. **art. N° 1117** - women's **T-SHIRT** - new item! (see page 10-11)
 4. **art. N° 1402** - women's trousers **FITNESS** - new item! (see page 62)

MEN'S T-SHIRT
available in colours:

K001 K002 K006 K017 K023



①
Art. N° 1118

Women's **T-SHIRT** **new item**

③
Art. N° 1117



④
Art. N° 1402

Women's trousers
Fitness

new item



①
Art. N° 1118

②
Art. N° 431

Men's trousers
With stretch fabric



KM MED. 201



①
Art. N° 1118



①
Art. N° 1118

②
Art. N° 431

Blouse ADAM

Blouse ADAM

- 1. short sleeve: art. N° 195
- 2. long sleeve: art. N° 196

3. art. N° 430 - men's trousers STRAIGHT (see page 84)

4. art. N° 431 - men's trousers WITH STRETCH FABRIC (see page 85)

5. art. N° 107 - blouse EWA (see page 22-23)

6. art. N° 167 - blouse DARIA (see page 13)

① Art. N° 195



more men's trousers on pages 84-85



Men's trousers With stretch fabric



KM MED. 74



① Art. N° 195

③ Art. N° 430



② Art. N° 196

③ Art. N° 430

Men's trousers Straight



① Art. N° 195



① Art. N° 195

Men's trousers With stretch fabric

④ Art. N° 431



② Art. N° 196

③ Art. N° 430



KM MED. 20



7. art. N° 454 - women's trousers CYGARETKI (see page 65)

8. art. N° 176 - blouse DANA (see page 20-21)

9. art. N° 460 - men's trousers UNIVERSAL (see page 84)

10. art. N° 442 - women's trousers SKINNY FIT (see page 65)



KM MED. 202

Blouse ADAM available in colours:

K001	K002	K006
K016	K017	K018
K019	K022	K023



⑤ Art. N° 107

① Art. N° 195

⑥ Art. N° 167

⑦ Art. N° 454

④ Art. N° 431

Blouse DANA

⑧ Art. N° 176



① Art. N° 195

⑨ Art. N° 460

⑩ Art. N° 442

Men's trousers Universal

Women's trousers Skinny fit

Blouse GUCIO



①
Art. N° 125



①
Art. N° 125



①
Art. N° 125

⑤
Art. N° 461



①
Art. N° 125

⑥
Art. N° 431



①
Art. N° 125



①
Art. N° 125



①
Art. N° 125

⑤
Art. N° 461



②
Art. N° 126

⑥
Art. N° 431

Men's trousers
With stretch fabric

Blouse GUCIO
1. short sleeve: art. N° 125
2. long sleeve: art. N° 126

3. art. N° 460 - men's trousers
UNIVERSAL (see page 84)

4. art. N° 430 - men's trousers
STRAIGHT (see page 84)

5. art. N° 461 - men's trousers
SLIM (see page 85)

6. art. N° 431 - men's trousers
WITH STRETCH FABRIC
(see page 85)

*a complete offer
on men's footwear
pages 106-108*



KM MED. 10

Blouse GUCIO available in colours:



①
Art. N° 153

④
Art. N° 179

③
Art. N° 430



②
Art. N° 154

③
Art. N° 430

Blouse IGOR available in colours:



①
Art. N° 153

⑤
Art. N° 460

Men's trousers
Universal



①
Art. N° 153

③
Art. N° 430

Blouse IGOR



①
Art. N° 153



KM MED. 55

Blouse IGOR
1. short sleeve: art. N° 153
2. long sleeve: art. N° 154

3. art. N° 430 - men's trousers
STRAIGHT (see page 84)

4. art. N° 179 - blouse **RÓŻA**
(see page 52-53)

5. art. N° 460 - men's trousers
UNIVERSAL (see page 84)

Blouse JACEK



Blouse JACEK
 1. short sleeve: **art. N° 161**
 2. **art. N° 431** - men's trousers **WITH STRETCH FABRIC** (see page 85)
 3. **art. N° 460** - men's trousers **UNIVERSAL** (see page 84)
 4. **art. N° 461** - men's trousers **SLIM** (see page 85)

Blouse JACEK available in colours:

K001	K002	K006	K008	K014	K016
K017	K018	K019	K020	K022	K023



Men's trousers Slim

The actual clothes colors may vary slightly from the colours in the pictures.



Blouse KRZYSZTOF
 1. short sleeve: **art. N° 132**
 2. **art. N° 431** - men's trousers **WITH STRETCH FABRIC** (see page 85)
 3. **art. N° 460** - men's trousers **UNIVERSAL** (see page 84)
 4. **art. N° 430** - men's trousers **STRAIGHT** (see page 84)

a complete offer on caps page 85



Blouse KRZYSZTOF available in colours:

K001	K002	K006	K008	K012
K014	K016	K017	K018	
K019	K020	K022	K023	



The actual clothes colors may vary slightly from the colours in the pictures.



Men's trousers With stretch fabric

Blouse KRZYSZTOF

Blouse MAREK



Blouse MAREK
 1. short sleeve: **art. N° 193**
 2. long sleeve: **art. N° 194**
 3. **art. N° 460** - men's trousers **UNIVERSAL** (see page 84)
 4. **art. N° 461** - men's trousers **SLIM** (see page 85)
 5. **art. N° 430** - men's trousers **STRAIGHT** (see page 84)



Men's trousers
Slim

Blouse MAREK available in colours:

K001	K002	K012	K016
K017	K018	K022	K023



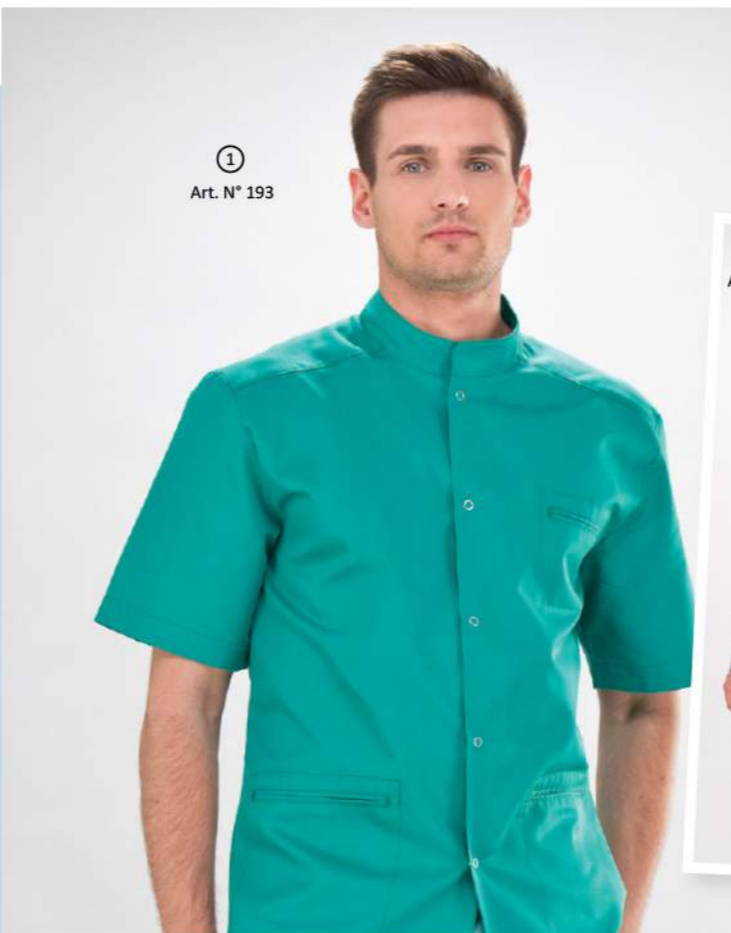
KM MED. 20



Men's trousers
Universal



KM MED. 56



Men's trousers
Universal

more trousers on pages 84-85

Blouse OLAF



①
Art. N° 127



Blouse OLAF
1. short sleeve: art. N° 127
2. long sleeve: art. N° 128

- 3. art. N° 172 - blouse LAURA (see page 36-37)
- 4. art. N° 434 - men's trousers SPORTY (see page 84)
- 5. art. N° 460 - men's trousers UNIVERSAL (see page 84)
- 6. art. N° 180 - blouse RÓZA (see page 52-53)



①
Art. N° 127

④
Art. N° 434



①
Art. N° 127

⑤
Art. N° 460



①
Art. N° 127



②
Art. N° 128

⑤
Art. N° 460

Men's trousers
Universal

Blouse OLAF
available in colours:

K001	K001 /K002	K001 /K012	K001 /K018	K001 /K022	K001 /K023
K002 /K001	K017 /K001	K018 /K001	K022 /K001	K023 /K001	



KM MED. 73



KM MED. 55



①
Art. N° 127



①
Art. N° 127

③
Art. N° 172



①
Art. N° 127



①
Art. N° 127

④
Art. N° 434



⑥
Art. N° 180

②
Art. N° 128

Blouse PAWEŁ



② Art. N° 130

① Art. N° 129

⑥ Art. N° 461

Men's trousers
Slim

④ Art. N° 460

Men's trousers
Universal

Blouse PAWEŁ
1. short sleeve: art. N° 129
2. long sleeve: art. N° 130

3. art. N° 431 - men's trousers
WITH STRETCH FABRIC
(see page 85)

4. art. N° 460 - men's trousers
UNIVERSAL (see page 84)

5. art. N° 430 - men's trousers
STRAIGHT (see page 84)

6. art. N° 461 - men's trousers
SLIM (see page 85)

Blouse PAWEŁ available in colours:

K001 K002 K006 K017 K018 K019 K022 K023



① Art. N° 129



② Art. N° 130

③ Art. N° 431



① Art. N° 129

④ Art. N° 460



① Art. N° 129

⑤ Art. N° 430



① Art. N° 129



① Art. N° 129

⑤ Art. N° 430

The actual clothes colors may vary slightly from the colours in the pictures.

Blouse SZYMON

Blouse SZYMON
1. short sleeve: art. N° 197
2. long sleeve: art. N° 198



① Art. N° 197

③ Art. N° 431

Men's trousers
With stretch fabric

3. art. N° 431 - men's trousers
WITH STRETCH FABRIC (see page 85)

4. art. N° 432 - men's trousers
TRAPPER (see page 84)

5. art. N° 460 - men's trousers
UNIVERSAL (see page 84)



② Art. N° 198

④ Art. N° 432

Men's trousers
Trapper



① Art. N° 197

② Art. N° 198

① Art. N° 197

⑤ Art. N° 460

Blouse SZYMON
available in colours:

K001 K002 K006 K014 K016 K017
K018 K019 K022 K023



① Art. N° 197



① Art. N° 197

The actual clothes colors may vary slightly from the colours in the pictures.

Fleece blouse VALDI



①
Art. N° 703

⑧
Art. N° 431

Men's trousers
With stretch fabric

KM MED. 56



KM MED. 55



①
Art. N° 703

Men's fleece blouse VALDI
1. long sleeve: art. N° 703

available in colours:



2. art. N° 704 - women's fleece blouse **NELI** (see page 60-61)

3. art. N° 442 - women's trousers **SKINNY FIT** (see page 65)

4. art. N° 461 - men's trousers **SLIM** (see page 85)

6. art. N° 1118 - men's **T-SHIRT** - new item! (see page 69)



⑥
Art. N° 1118
new item



⑦
Art. N° 1116
new item



②
Art. N° 704

①
Art. N° 703

④
Art. N° 461

③
Art. N° 442

7. art. N° 1116 - blouse **KAMIL** - new item! (see page 68)

8. art. N° 431 - men's trousers **WITH STRETCH FABRIC** (see page 85)



①
Art. N° 703

Men's coats



①
Art. N° 306

Coat
KAROL

KM MED. 56

Coat KAROL

1. long sleeve: art. N° 306

available in colours:



Coat WOJCIECH

2. long sleeve: art. N° 323

available in colour:

K001



KM MED. 10

Coat FILIP

3. long sleeve: art. N° 322

available in colour:

K001

4. art. N° 430 - men's trousers **STRAIGHT** (see page 84)



①
Art. N° 306



②
Art. N° 323

Coat
WOJCIECH



③
Art. N° 322

Coat
FILIP

④
Art. N° 430



②
Art. N° 323

Men's trousers **STRAIGHT** Art. N° 430



Men's trousers **TRAPPER** Art. N° 432



Trousers **STRAIGHT, TRAPPER** available in colours: K001 K002 K006 K012* K014 K016 K017 K018 K019 K022 K023

Men's trousers **SPORTY** Art. N° 434



Men's trousers **UNIVERSAL** Art. N° 460



Trousers **SPORTY, UNIVERSAL** available in colours: K001 K002 K006 K012* K014 K016 K017 K018 K019 K020 K022 K023

Men's trousers: **STRAIGHT, TRAPPER, SPORTY, UNIVERSAL**
FABRIC: 50% cotton, 50% polyester
 * Colour K012 - **FABRIC: 33% cotton, 67% polyester**

Men's trousers **SLIM** Art. N° 461



Trousers **SLIM** available in colours: K001 K002 K006 K014 K017 K023

Men's trousers **SLIM**
FABRIC: 33% cotton, 62% polyester, 5% elastene

Men's trousers **WITH STRETCH FABRIC** Art. N° 431



Trousers **WITH STRETCH FABRIC** available in colours: K001 K002 K006 K014 K016 K017 K018 K019 K022 K023

Men's trousers **WITH STRETCH FABRIC**
FABRIC: 50% cotton, 50% polyester, stretch fabric: 89% cotton, 11% elastene

CAPS



CAPS
 Two sizes available:
SMALL:
 head circumference 56-60 cm
LARGE:
 head circumference 60-64 cm



PATTERN 6
 new item

BASIC FABRIC

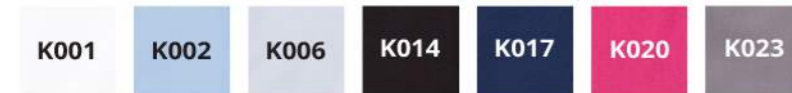


CONSISTS OF:
50% cotton / 50% polyester
weight: 180 g/m2 (+/- 5%)

* **K012 - DARK GREEN:**
33% cotton / 67% polyester
weight: 165 g/m2

WASHING TEMPERATURE:
60°C: domestic laundry
75°C: industrial laundry

POLYCOTTON CONTAINING XLA™ ELASTIC FIBER



CONSISTS OF:
62% polyester / 33% cotton / 5% włókno XLA™
weight: 245 g/m2 (+/- 5%)

WASHING TEMPERATURE:
60°C: domestic laundry
75°C: industrial laundry

MODELS:
Women's trousers SKINNY FIT
SKINNY FIT WITH STRETCH FABRIC
CYGARETKI
PUSH-UP
BREECHES
Men's trousers SLIM
PENCIL skirt

Women's and men's trousers WITH STRETCH FABRIC, SKINNY FIT WITH STRETCH FABRIC, COMFORT, BREECHES – recommended washing temperature 40°C.

„FITNESS” FABRIC - NEW ITEM



MODEL:
Women's trousers FITNESS

CONSISTS OF: 28% cotton, 68% polyester, 4% lycra
weight: 230 g/m2 (+/- 5%)
WASHING TEMPERATURE: 40°C

TRICOT - NEW ITEM



MODELS:
Women's T-SHIRT/Men's T-SHIRT
Blouse KAMILA/Blouse KAMIL

CONSISTS OF: 50% cotton / 50% polyester
weight: 170 g/m2 (+/- 5%)
WASHING TEMPERATURE:
WHITE FABRIC: 60°C
COLOUR FABRIC: 40°C

POLYESTER FLEECE



MODELS:
Sleeveless fleece EMI
Fleece blouse NELI
Men's fleece blouse VALDI

CONSISTS OF: 100% polyester
weight: 220 g/m2 (+/- 5%)
WASHING TEMPERATURE: 40°C

PATTERNED FABRIC



CONSISTS OF: 100% cotton
weight: 155 g/m2 (+/- 5%)
WASHING TEMPERATURE: 40°C

MODELS:
ANIA
AGATA
SONIA
PAULA
TOLA
KRZYSZTOF
CAPS

The actual colours of clothes may differ from the colours in pictures.
When in doubt, please check the real shade of the colour using fabric samples which we will provide free upon client's request.

ELDAN Medical footwear





Women's Footwear

Please browse through ELDAN wide range of footwear models & fancy colours

The top and padding in shoes are made of supreme natural leather. Soles are made of PCV.



KD MED. 03
 Women's medical shoes **KD MED. 03**
 Wedge heel height: **3,5 cm**
 Sole **white**, top **white**
 Available in sizes: **35-42**



KD MED. 04

Women's medical shoes **KD MED. 04**
 Wedge heel height: **3,5 cm**
 Sole **white**, top in colours: **white, navy blue, fuchsia**
wz1, wz2, wz3, wz4, wz5, wz6, wz7, wz8
 Available in sizes **36-41**



KD MED. 09

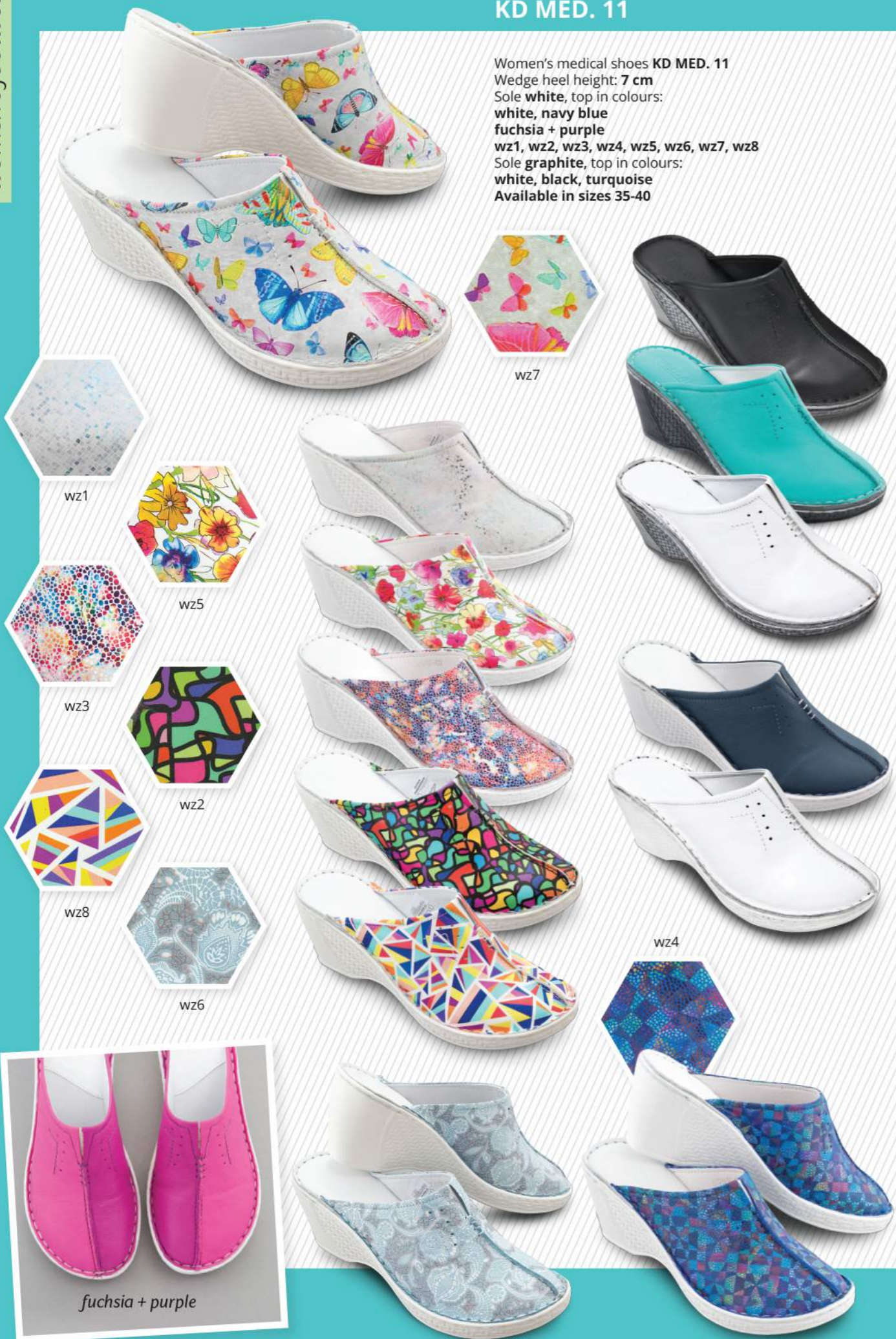
Women's medical shoes **KD MED. 09**
 Wedge heel height: **3,5 cm**
 Sole **white**, top: **white, wz1, wz2, wz3, wz4, wz5, wz6, wz7, wz8**
 Available in sizes **36-41**



The colours of the footwear might vary slightly from the actual colours of leathers.

KD MED. 11

Women's medical shoes **KD MED. 11**
 Wedge heel height: **7 cm**
 Sole **white**, top in colours:
white, navy blue
fuchsia + purple
wz1, wz2, wz3, wz4, wz5, wz6, wz7, wz8
 Sole **graphite**, top in colours:
white, black, turquoise
 Available in sizes 35-40



fuchsia + purple

KD MED. 12

Women's medical shoes **KD MED. 12**
 Wedge heel height: **6 cm**
 Sole **white**,
 top in colours:
white
purple + fuchsia
sea colour + turquoise
wz1, wz2, wz6, wz7, wz8
 Available in sizes 36-41



KD MED. 13

Women's medical shoes **KD MED. 13**
 Wedge heel height: **5 cm**
 Sole **white**, top in colours:
white
fuchsia + purple
wz6, wz7, wz8
 Sole **graphite**, top in colours:
black, wz2
 Available in sizes 36-42



KD MED. 14

Women's medical shoes **KD MED. 14**
 Wedge heel height: **6 cm**
 Sole **white**, top in colours:
white, purple, grey, sea colour
wz2, wz4, wz6, wz7, wz8
 Available in sizes 36-41



KD MED. 23

Women's medical shoes **KD MED. 23**
 Wedge heel height: **5 cm**
 Sole **white**, top in colours:
white, wz6, wz8
 Sole **graphite**, top **black**
 Available in sizes 36-42



KD MED. 27

Women's medical shoes **KD MED. 27**
 Wedge heel height: **5 cm**
 Sole **white**, top in colours:
white
white and stripe: grey
white and stripe: fuchsia
white and stripe: turquoise
white and stripe: navy blue
wz3, wz4, wz5, wz6, wz8
 Sole **graphite**, top in colours:
black and stripe: fuchsia
wz2
 Available in sizes 36-42



KD MED. 30

Women's medical shoes **KD MED. 30**
 Wedge heel height: **2,5 cm**
 Sole **white**, top **white**
 Available in sizes 35-43



KD MED. 30/P

Women's medical shoes **KD MED. 30/P**
 Wedge heel height: **2,5 cm**
 Sole **white**, top **white**
 Available in sizes 35-43



KD MED. 31

Women's medical shoes **KD MED. 31**
 Wedge heel height: **2,5 cm**
 Sole **white**, top in colours:
white, mint, azure
 Available in sizes 35-43



KD MED. 31/P

Women's medical shoes **KD MED. 31/P**
 Wedge heel height: **2,5 cm**
 Sole **white**, top **white**
 Available in sizes 35-43



KD MED. 32

Women's medical shoes **KD MED. 32**
 Wedge heel height: **7 cm**
 Sole **white**, top in colours:
white
 stripes: **celadon, white, grey**
 stripes: **navy blue, white, sea colour**
 stripes: **plum, white, purple**
 Available in sizes 35-40



The colours of the footwear might vary slightly from the actual colours of leathers.

KD MED. 53

Women's medical shoes **KD MED. 53**
 Wedge heel height: **4,5 cm**
 Sole **white**, top in colours:
white
navy blue and stripes: sea colour, turquoise
plum and stripes: purple, fuchsia
 Available in sizes 35-42



KD MED. 54

Women's medical shoes **KD MED. 54**
 Wedge heel height: **4,5 cm**
 Sole **white**, top in colours:
white
fuchsia + plum + purple
turquoise + navy blue + sea colour
white + graphite + grey
 wz1, wz2, wz3, wz4, wz5, wz6, wz7, wz8
 Available in sizes 35-42



The colours of the footwear might vary slightly from the actual colours of leathers.

KD MED. 57

Women's medical shoes **KD MED. 57**
 Wedge heel height: **4,5 cm**
 Sole **white**, top in colours:
white, turquoise, fuchsia + purple,
wz1, wz2, wz3, wz4, wz5, wz6, wz7, wz8
 Available in sizes 35-42



KD MED. 58

Women's medical shoes **KD MED. 58**
 Wedge heel height: **3,5 cm**
 Sole **white**, top in colours:
white, fuchsia, sea colour
wz1, wz2, wz6, wz7, wz8
 Available in sizes 36-42



KD MED. 59

Women's medical shoes **KD MED. 59**
 Wedge heel height: **1 cm**
 Sole **white**, top in colours:
white, navy blue, graphite
grey + white
wz1, wz3, wz5, wz8
 Available in sizes 36-41



KD MED. 61

Women's medical shoes **KD MED. 61**
 Wedge heel height: **2 cm**
 Sole **white**, top in colours:
white, grey
turquoise + sea colour
pistachio + white + mint
 Available in sizes 36-42



KD MED. 62

Women's medical shoes **KD MED. 62**
 Wedge heel height: **2,5 cm**
 Sole **white**, top in colours:
white, grey,
wz2, wz6, wz8
 Available in sizes 36-41



KD MED. 63

Women's medical shoes **KD MED. 63**
 Wedge heel height: **2 cm**
 Sole **white**, top structural leather in colours:
white, mint, azure, coral, yellow
 Available in sizes 36-42



KD MED. 64

Women's medical shoes **KD MED. 64**
 Wedge heel height: **3,5 cm**
 Sole **white**, top in colours:
white
plum + purple + fuchsia
navy blue + sea colour + turquoise
graphite + grey + white
 Available in sizes 36-42



KD MED. 66

Women's medical shoes **KD MED. 66**
 Wedge heel height: **7 cm**
 Sole **cappuccino**,
 top structural leather in colours:
white, yellow, coral, mint, ink blue, pistachio
wz1, wz2, wz3, wz4, wz5, wz6, wz7, wz8
 Available in sizes 36-41



KD MED. 66/P

Women's medical shoes **KD MED. 66/P**
 Wedge heel height: **7 cm**
 Sole **cappuccino**, top structural leather in colours:
white, coral, mint, yellow, ink blue, pistachio
 Available in sizes 36-41



KD MED. 68

Women's medical shoes **KD MED. 68**
 Wedge heel height: **4 cm**
 Sole **white**, top structural leather in colours:
white, coral, ink blue, yellow, pistachio,
wz1, wz2, wz3, wz4, wz5, wz6, wz7, wz8
 Available in sizes 36-42



KD MED. 69

structural leather

Women's medical shoes **KD MED. 69**
 Wedge heel height: **4 cm**
 Sole **white**, top structural leather in colours:
white
mint + pistachio + white
ink blue + azure + white
 Available in sizes 36-42

mint + pistachio + azure



white

ink blue + azure + white

KD MED. 70

Women's medical shoes **KD MED. 70**
 Wedge heel height: **4 cm**
 Sole **white**, top in colours:
white, navy blue, plum,
wz1, wz2, wz3, wz4, wz5, wz6, wz7, wz8
 Available in sizes 36-42



navy blue



KD MED. 72

Women's medical shoes **KD MED. 72**
 Wedge heel height: **4,5 cm**
 Sole **white**, top in colours:
white, turquoise, fuchsia,
wz1, wz2, wz3, wz4, wz5, wz6, wz7, wz8
 Available in sizes 35-42

KD MED. 101

Women's medical shoes **KD MED. 101**
 Wedge heel height: **2,5 cm**
 Sole **white**,
 top **white, fuchsia, turquoise, wz4, wz8**
 Available in sizes 35-42



KD MED. 102

Women's medical shoes **KD MED. 102**
 Wedge heel height: **2,5 cm**
 Sole **grey-white**, top **white**
 Available in sizes 35-42



KD MED. 104/P

Women's medical shoes **KD MED. 104**
 Wedge heel height: **4 cm**
 Sole **white**, top **white**
 Available in sizes 36-42



KD MED. 103

Women's medical shoes **KD MED. 103**
 Wedge heel height: **2,5 cm**
 Sole **white**, top in colours:
white, navy blue, wz1, wz2, wz4, wz5, wz6, wz7, wz8
 Available in sizes 36-41



KD MED. 104

Women's medical shoes **KD MED. 104**
 Wedge heel height: **4 cm**
 Sole **white**, top in colours:
white, fuchsia, navy blue, wz1, wz2, wz3, wz4, wz5, wz6, wz7, wz8
 Available in sizes 36-42



KD MED. 105

Women's medical shoes **KD MED. 105**
 Wedge heel height: 7 cm
 Sole **cappuccino**, top **structural leather** in colours:
white, mint, pistachio, yellow, coral, ink blue
wz1, wz2, wz3, wz4, wz5, wz6, wz7, wz8
 Available in sizes 36-41



wz7

wz1

wz8

wz3

wz2

wz4

wz6

wz5

KD MED. 106

Women's medical shoes **KD MED. 106**
 Wedge heel height: 7 cm
 Sole **cappuccino**,
 top in colours:
white, fuchsia, turquoise, sea colour,
wz1, wz2, wz3, wz4, wz5, wz6, wz7, wz8
 Available in sizes 36-41



wz5

wz4

wz3

wz1

wz7

wz8

wz6

wz2

KD MED. 107

Women's medical shoes **KD MED. 107**
 Wedge heel height: 7 cm
 Sole **cappuccino**, top in colours:
white
plum + purple + fuchsia
navy blue + turquoise + sea colour
graphite + grey + white
 Available in sizes 35-40



KD MED. 108

Women's medical shoes **KD MED. 108**
 Wedge heel height: 2 cm
 Sole **white**, top in colours:
white, azure, pistachio, coral, ink blue,
wz2, wz5, wz6, wz7, wz8
 Available in sizes 36-42



wz8

wz7

wz2

wz5

wz6

KD MED. 109

Women's medical shoes **KD MED. 109**
 Wedge heel height: **7 cm**
 Sole **cappuccino**, top in colours:
white, fuchsia, turquoise, navy blue,
wz1, wz2, wz3, wz4, wz5, wz6, wz7, wz8
 Available in sizes 35-40



wz3



wz1



wz4

KD MED. 110

Women's medical shoes **KD MED. 110**
 Wedge heel height: **4,5 cm**
 Sole **ecru**, top in colours: **white,**
fuchsia, turquoise, navy blue,
wz2, wz6, wz7, wz8
 Available in sizes 36-41



wz2

wz6

wz8

wz7

KD MED. 111

Women's medical shoes **KD MED. 111**
 Wedge heel height: **4,5 cm**
 Sole **ecru**, top in colours:
white, purple, turquoise, navy blue,
wz1, wz2, wz3, wz4, wz6, wz7, wz8
 Available in sizes 36-41



wz8



wz2



wz1

wz3

wz4

wz6



wz7

ATTENTION! Please take into account a possible difference of +/- 0,5 cm between the production items.

detailed information about footwear sizes available at: www.eldan.pl



Men's Footwear

KM MED. 10

Men's medical shoes **KM MED. 10**
 Wedge heel height: **3,5 cm**
 Sole **beige**,
 top in colours: **white, graphite**
 Available in sizes 40-45



KM MED. 20

Men's medical shoes **KM MED. 20**
 Wedge heel height: **3,5 cm**
 Sole **dark beige**,
 top in colours:
white, plum, black, graphite,
navy blue, azure, mint
 Available in sizes 40-45



KM MED. 55

Men's medical shoes **KM MED. 55**
 Wedge heel height: **2,5 cm**
 Sole **white**, top in colours:
white, grey, navy blue
 Available in sizes 39-46



KM MED. 56

Men's medical shoes **KM MED. 56**
 Wedge heel height: **2,5 cm**
 Sole **white**,
 top in colours:
white, plum, mint, azure
 Available in sizes 40-46



KM MED. 73

Men's medical shoes **KM MED. 73**
 Wedge heel height: **2,5 cm**
 Sole **white**, top in colours:
white, plum
 Available in sizes 39-46



KM MED. 74



Men's medical shoes **KM MED. 74**
 Wedge heel height: **2,5 cm**
 Sole **grey-white**, top **white**
 Available in sizes **40-46**

KM MED. 201

Men's medical shoes **KM MED. 201**
 Wedge heel height: **2,5 cm**
 Sole **white**, top in colours:
white, grey, navy blue
 Available in sizes **40-46**



KM MED. 202

Men's medical shoes **KM MED. 202**
 Wedge heel height: **2,5 cm**
 Sole **grey-white**, top in colours:
white, grey, navy blue
 Available in sizes **40-46**



Ordering:

- by email: sales@eldan.pl, biuro@eldan.pl
- at our retailers: (full list available at www.eldan.pl)
- in person: at our office or during trade fairs

We can also provide **CUSTOM ORDERS**, made to customer's specifications. Custom orders are subject to a surcharge added to net price. Such orders are **not refundable or returnable**. **Custom orders may include the following options:**

- Clothes in sizes varying from the originals
- Clothes in colours varying from the original catalogue colours
- Any changes to the original design (additional pockets, narrowing, etc.)

CLOTHING SIZE CHARTS available on www.eldan.pl

Upon customer's request we also make **EMBROIDERY** and **IDENTIFICATION LABELS** resistant to washing and ironing.



The company is certified with ISO 9001:2015 Quality Management System. All of the products are CE marked.

ATTENTION! Please take into account a possible difference of +/- 0,5 cm between the production items.

detailed information about footwear sizes available at: www.eldan.pl

Copyright by ELDAN© 2019 all rights reserved
 This catalogue offer is valid until 30/09/2020

Clothing size charts available on www.eldan.pl



European Union
European Regional
Development Fund

