



COMEG
M+
catalog





M+
CATALOG
Content

- 1** ABOUT US 06
- 2** DEVICES & HANDPIECES 10
- 3** TIPS & ACCESSORIES 18
- 4** INFORMATION 32

Class IIa and IIb medical devices CE0459 (GMED) according to Medical Device Directive 93/42/EEC depending of products (Class IIa medical devices according to Medical Device Regulation 2017/745) - For medical professional use only.

Manufacturer: SATELEC®, a Company of ACTEON Group - 17 avenue Gustave Eiffel, ZI du Phare 33700 MERIGNAC France

Read carefully the instructions for use available on www.satelec.com/documents



M+
CATALOG
About us

Service & Assistance 08

COMEG representative offices 09

COMEG REPRESENTATIVE OFFICES

Our local staff will support you, wherever you are in the world.

SERVICE & ASSISTANCE

In our main plants, our on-site specialists are dedicated to servicing and providing expertises to your COMEG products:

- Repairs of all our products under warranty
- Free quotations if accepted for all repairs out of warranty
- Qualified repairs with original spare parts

• ENDOSCOPIC EQUIPMENT & ENDOSCOPES

SOPRO SA
ZAC Athelia IV- Avenue des Genévriers
13705 La Ciotat cedex - France
Tel +33(0)442 980 109
info@comegmedical.com

• ULTRASOUNDS

SATELEC
17 avenue Gustave Eiffel - BP 30216
33708 Merignac cedex - France
Tel +33(0)556 340 607
info@comegmedical.com

• India - ACTEON® India

B-94 G.I.D.C ELECTRONIC ESTATE
Sector 25
Gandhinagar - Gujurat - 382023
Tel +91 (79) 2328 7473
info.in@acteongroup.com

• Italy - ACTEON® Italia

Via Roma 45
21057 Olgiate olona (Varese)
Tel +39 0331 376 760
info.it@acteongroup.com

• United Kingdom - ACTEON® UK

Acteon House - Phoenix Park
Eaton Socon
St Neots PE19 8EP
Tel +44 1480 477 307
info.uk@acteongroup.com

• Middle East - ACTEON® Middle East

Al-Fanar Bldg. - Office (401)
247 Wasfi Al-Tall Str., Khalda
P.O.Box: 5746 - Amman Jordan
Tel +962 6 5534401
info.me@acteongroup.com

• Taiwan - ACTEON® Taiwan

11F., N°1, Songzhi Rd.
Xinyi Dist - Taipei City 11047
Taiwan (R.O.C.)
Tel +866 2 8729 2103
info.tw@acteongroup.com

• China - ACTEON® China

Office 401
No.12 Xinyuanxili Zhong Street,
Chaoyang District, Beijing 100027
Tel +86 10 646 57011/2/3
info.cn@acteongroup.com

• USA - ACTEON® COMEG USA

124 Gaither Drive, Suite 140
Mount Laurel, NJ 08054
United States
Tel. +1 856 222 9988
info.us@comegmedical.com

• Thailand - ACTEON® Thailand

23/45 Sorachai Building 16th Floor
Sukumvit 63 Road, Klongton Nua
Wattana, Bangkok 10110 Thailand
Tel +66 2 714 3295
info.th@acteongroup.com



- 📍 COMEG representative offices
- 📍 Production units



M+
CATALOG

Devices & handpieces

PIEZOTOME® SOLO M+	12
DEVICE	12
FOOTSWITCH	13
IMPLANTCENTER™ M+	14
DEVICE	14
FOOTSWITCH	15
HANDPIECES	16
PIEZOTOME® M+ HANDPIECE	16
I-SURGE™ MOTOR	17

Piezotome® is a registered trademark of SATELEC
ImplantCenter™ is an unregistered trademark of SATELEC
I-Surge™ is an unregistered trademark of SATELEC

ULTRASONIC
BONE SURGERY
PIEZOTOME®
Solo M+



Surgery unit with one piezo-handpiece connection

Reference	Description
F57850	Piezotome® Solo M+ CEE
F57853	Piezotome® Solo M+ AUS
F57856	Piezotome® Solo M+ US
F57859	Piezotome® Solo M+ UK

- Medical device of class IIb - CE 0459 according to Medical Device Directive 93/42/EEC
- Manufacturer: SATELEC, a company of ACTEON Group

SPECIFICATION OF THE DEVICE

F57850 / F57853 / F57856 / F57859

- Dimensions (W x H x D): 378 x 136 x 306mm
- With brackets: 378 x 460 x 306mm
- Weight: 3700 g
- Screen dimensions (W x H): 115 x 86 mm
- LCD black & white screen
- 4 power modes
- 4 programmable buttons
- Irrigation flow rate: 0 to 120 ml/min
- Reset to manufacturer settings
- Supply voltage: 100 - 230 VAC
- Power supply frequency: 50 Hz / 60 Hz
- Power consumption: 150 VA to 230 VAC
- No-load voltage: 250 V
- Minimum output frequency: 28 kHz
- Amplitude: 20 to 200 µm
- Internal fuse not accessible to the user: 1 fuse - F1: 5mm x 20mm - 10 AT / 250 VAC
- Fuse (mains connector): 2 fuses - 5mm x 20mm - 2 AT for 100 to 230 VA

PIEZOTOME® SOLO M+ FOOTSWITCH



Reference	Description
F57851	Piezotome® Solo M+ footswitch

SPECIFICATION OF PIEZOTOME® SOLO M+ FOOTSWITCH

F57851

- Cord length: 2900mm
- Dimensions (W x H x D): 173 x 140 x 176mm
- Weight: 1000 g
- Light: remains active approx. 9 secs after the footswitch is released
- Multifunction footswitch:
 - Power modes
 - ON/OFF ultrasound
- Protection rating: IPX6

ULTRASONIC
BONE SURGERY
IMPLANTCENTER™
M+



IMPLANTCENTER™ M+
FOOTSWITCH



Surgery unit with a connection for one piezo-handpiece and another one for a motor

Reference	Description
F27250	ImplantCenter™ M+ CEE
F27252	ImplantCenter™ M+ UK
F27253	ImplantCenter™ M+ AUS

- Medical device of class IIb - CE 0459 according to Medical Device Directive 93/42/EEC
- Manufacturer: SATELEC, a company of ACTEON Group

Reference	Description
F27251	ImplantCenter™ M+ footswitch

SPECIFICATION OF THE DEVICE

F27250 / F27252 / F27253

- Dimensions (W x H x D): 472,9 x 149,5 x 339,9mm
- With brackets: 472,9 x 471,1 x 339,9mm
- Weight: 5000 g
- Screen dimensions (W x H): 115 x 86 mm
- Touch sensitive screen
- 4 power modes
- 4 programmable buttons
- Irrigation flow rate: 10 to 120 ml/min
- Reset to manufacturer settings
- Supply voltage: 100 - 230 VAC
- Power supply frequency: 50 Hz / 60 Hz
- Power consumption: 150 VA to 230 VAC
- No-load voltage: 250 V
- Minimum output frequency: 28 kHz
- Amplitude: 20 to 200 µm
- Internal fuse not accessible to the user: 1 fuse - F1: 5 mm x 20 mm - 10 AT / 250 VAC
- Fuse (mains connector): 2 fuses - 5 mm x 20 mm - 2 AT for 100 to 230 VA

SPECIFICATION OF IMPLANTCENTER™ M+ FOOTSWITCH

F27251

- Cord length: 2900mm
- Dimensions (W x H x D): 311 x 181 x 209mm
- Weight: 3500 g
- Light: remains active approx. 9 secs after the footswitch is released
- Multifunction footswitch:
 - Instrument switch
 - Direction of rotation
 - ON/OFF or progressive ultrasound / motor
- Protection rating: IPX8

ULTRASONIC
BONE SURGERY
Handpieces

PIEZOTOME® M+ HANDPIECE



Reference	Description
F12860	Piezotome® M+ handpiece

- Medical device of class IIb - CE 0459 according to Medical Device Directive 93/42/EEC
- Manufacturer: SATELEC, a company of ACTEON Group

SPECIFICATION OF THE PIEZOTOME M+ HANDPIECE

F12860

- Dimensions (L): 130 mm
- Weight: 100 g
 - With cord: 265 g
- Cord length: 2900mm
- 6 ceramic rings
- Cold LED light (power): 100 000 LUX

Piezotome® is a registered trademark of SATELEC
SATELEC® is a registered trademark of SATELEC

I-SURGE™ MOTOR



Reference	Description
F34452	I-Surge™ motor

- Medical device of class IIa - CE 0459 according to Medical Device Directive 93/42/EEC
- Manufacturer: SATELEC, a company of ACTEON Group

SPECIFICATION OF THE I-SURGE™

F34452

- Nose in accordance with ISO 3964 (E-type connection), external spray, with light
- Motor must not be lubricated
- Direct current electric brushless micromotor, self-ventilated, sterilizable
- This motor must only be used with SATELEC® cord and electronic controls
- Dimensions:
 - With the nose: Ø 23.2 x 90.6mm
 - Without the nose: Ø 23.2 x 67.9mm
- Weight: 119 g (without cable)
- Rphase: 300mOhm (one phase) Y-connection
- Lphase: 25 µH (one phase)
- Torque constant: 0.62 N.cm / Arms.
- Rotation speed: from 100 to 40.000 rpm
- Mechanical power: Max. 140 W at 25.000 rpm
- Torque: Max. 6.0 Ncm between 200 and 18.000 rpm / Max. 2.0 Ncm at 40.000 rpm
- Idle current: 0.26 A.
- Max. admissible current: 8 A (at peak)
- Noise level: less than 60 dBa at 45 cm.
- Luminous intensity: greater than 12 klux with CA 20:1 L.

I-Surge™ is an unregistered trademark of SATELEC
ImplantCenter™ is an unregistered trademark of SATELEC



M+
CATALOG
**Tips &
Accessories**

CLINICAL KITS	20
CMF TIPS	21
RHINOPLASTY TIPS «ESSENTIAL»	22
RHINOPLASTY TIPS «EXPERT»	23
ALL TIPS	24
OSTEOTOMY TIPS	24
OSTECTOMY / OSTEOPLASTY TIPS	26
BONE REMODELING / DRILLING TIPS ...	27
MEMBRANE DETACHMENT TIPS	28
TIP MEASURING GUIDE	29
ADDITIONAL PRODUCTS	30

ULTRASONIC
BONE SURGERY
Clinical kits

CranioMaxilloFacial

INTENDED USE

M+ tips can be used for osteotomy, osteoplasty, decortication, drilling, shaping and smoothing of teeth and bone in various surgical procedures, including but not limited to general, orthopaedic, otolaryngological, maxillofacial, oral, hand and foot, neurosurgery, spinal and plastic/reconstructive surgeries.



Reference	Description
F57803	CMF kit non-sterile 6 tips - 5 times reusable

Metallic support included

SPECIFICATION OF REUSABLE NON-STERILE TIPS

- Non-sterile tips can be used up to 5 times
- Refer to cleaning, disinfection and sterilization protocols for SATELEC® tips



5 uses max

REGULATORY & ENVIRONMENT

- Class IIb according to the European Directive 93/42/EEC
- Designed and manufactured in accordance with an EN ISO 13485-certified quality assurance system
- Documentation complies with European regulation No.207/2012
- Manufacturer: SATELEC®, a company of ACTEON Group (France)



	BS1L	BS2L XL	BS2R XL	BS1RD	SL1	BS4
Reference	F87612	F87605	F87606	F87608	F87618	F87615
Length (mm)	31	39.5	39.5	38.9	33	31
Offset (mm)	22	30	30	12.3	11	12.6
Width (mm)	4	4	4	5	2.6	4
Thickness (mm)	0.6	0.8	0.8	0.6	0.3	0.7

ULTRASONIC
BONE SURGERY
Clinical kits

RhinoPlasty

GERBAULT

RhinoPlasty

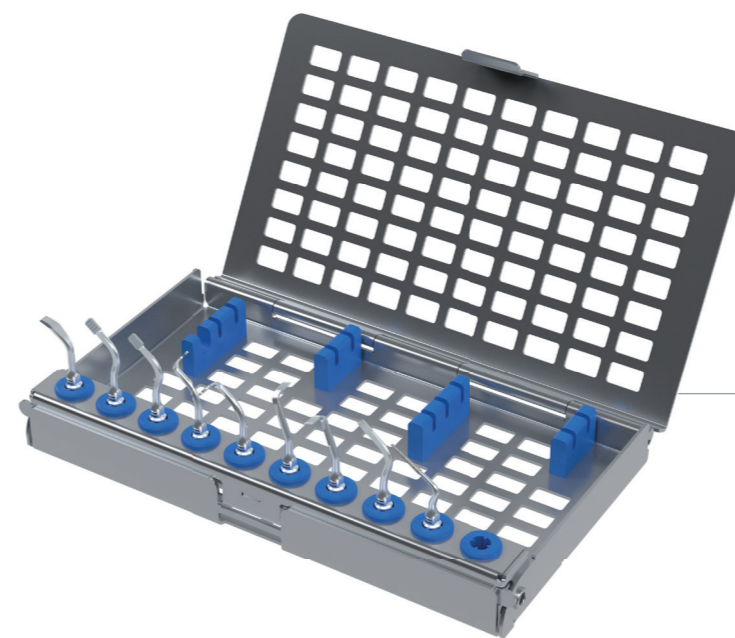
Expert - GERBAULT



Reference	Description
F87681	Rhinoplasty kit "Essential" non-sterile 6 tips - 5 times reusable

Metallic support included

	RHS2Hb	RHS2Fb	RHS5	RHS3L	RHS3R	RHS6
Reference	F87686	F87687	F87679	F87677	F87678	F87680
Length (mm)	33.7	33.7	34	30	30	27
Offset (mm)	11	11	11	10	10	17
Width (mm)	3.5	3.5	2.6	5	5	•
Thickness (mm)	1.3	0.9	0.5	0.6	0.6	0.5



Reference	Description
F87689	Rhinoplasty kit "Expert" non-sterile 9 tips - 5 times reusable

Metallic support included

	RHS1	RHS2Hb	RHS2Fb	RHS3L	RHS3R
Reference	F87688	F87686	F87687	F87677	F87678
Length (mm)	28	33.7	33.7	30	30
Offset (mm)	12.2	11	11	10	10
Width (mm)	3.5	3.5	3.5	5	5
Thickness (mm)	0.55	1.3	0.9	0.6	0.6

	RHS4L	RHS4R	RHS5	RHS6
Reference	F87683	F87682	F87679	F87680
Length (mm)	31.5	31.5	34	27
Offset (mm)	9.5	9.5	11	17
Width (mm)	2.6	2.6	2.6	•
Thickness (mm)	0.5	0.5	0.5	0.5

OSTEOTOMY TIPS



BS1S **BS1RD** **BS1L** **BS2L** **BS2R**

Reference	F87611	F87608	F87612	F87613	F87614
Length (mm)	28.2	38.9	31	28	28
Offset (mm)	15	12.3	22	9.35	9.35
Width (mm)	4	5	4	4	4
Thickness (mm)	0.6	0.6	0.6	0.65	0.65



BS2L XL **BS2R XL** **BS5** **RHS3L** **RHS3R**

Reference	F87605	F87606	F87616	F87677	F87678
Length (mm)	39.5	39.5	33.8	30	30
Offset (mm)	30	30	11.1	10	10
Width (mm)	4	4	2.6	5	5
Thickness (mm)	0.8	0.8	0.5	0.6	0.6



RHS4L **RHS4R** **RHS5** **NINJA** **LC1 XL**

Reference	F87683	F87682	F87679	F87628	F87607
Length (mm)	31.5	31.5	34	26.4	32.1
Offset (mm)	9.5	9.5	11	15.2	21.5
Width (mm)	2.6	2.6	2.6	2.6	1.2
Thickness (mm)	0.5	0.5	0.5	0.6	0.7



SL1 **CS1** **BS1 XXL**

Reference	F87618	F87629	Reference	F87602
Length (mm)	33	29.8	Length (mm)	104
Offset (mm)	11	17.8	Offset (mm)	15
Width (mm)	2.6	4	Width (mm)	4
Thickness (mm)	0.3	0.5	Thickness (mm)	0.6

ULTRASONIC
BONE SURGERY

All tips 

OSTEOPLASTY TIPS

BONE REMODELING / DRILLING TIPS



BS4



BS6



RHS1



RHS2Hb



RHS2Fb

	BS4	BS6	RHS1	RHS2Hb	RHS2Fb
Reference	F87615	F87617	F87688	F87686	F87687
Length (mm)	31	28	28	33.7	33.7
Offset (mm)	12.6	11.9	12.2	11	11
Width (mm)	4	3.5	3.5	3.5	3.5
Thickness (mm)	0.7	0.55	0.55	1.3	0.9



CE3



DB1



DB2



RHS6



SL2

	CE3	DB1	DB2	RHS6	SL2
Reference	F87653	F87610	F87609	F87680	F87619
Length (mm)	29.8	27	30.7	27	28
Offset (mm)	10.2	17	20.1	17	14
Width (mm)	•	•	•	•	•
Thickness (mm)	0.85	0.6	2.3	0.5	1.5



BS6 XXL

	BS6 XXL
Reference	F87604
Length (mm)	103
Offset (mm)	12.2
Width (mm)	3.5
Thickness (mm)	0.55

ULTRASONIC
BONE SURGERY

All tips

MEMBRANE DETACHMENT TIPS

ULTRASONIC
BONE SURGERY

Tip measuring guide



SL3



SL4



SL5

Reference	F87620	F87621	F87622
Length (mm)	31	29.1	30.9
Offset (mm)	12	10.2	11.1
Width (mm)	5	4	4
Thickness (mm)	0.4	0.65	0.65

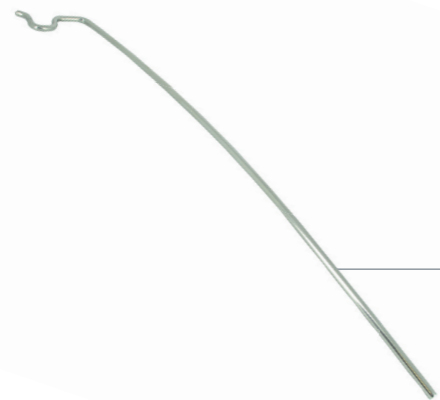
	Length (a)	Offset (b)	Width (c)	Thickness (d)
Osteotomy				
Osteoplasty				
Bone remodeling / Drilling				
Membrane detachment				

ULTRASONIC
BONE SURGERY
**Additional
products**



Reference	Description
F00398	M+ Flat key

Not a Medical Device



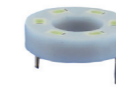
Reference	Description
E27113	Bracket M+

Component of Class IIb Medical Device as per Medical Device Directive 93/42/EEC



Reference	Description
F87903	M+ Protective sleeve For extra long tips (XXL)

Not for sale in the US



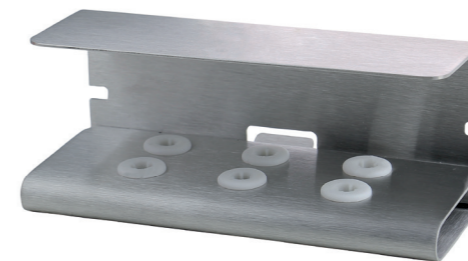
Reference	Description
F12821	LED Ring M+

Spare parts of Medical Device



Reference	Description
F59926	Set of 1 disposable sterile line With clips and perforators
F59925	Set of 5 disposable sterile lines With clips and perforators

Accessories of Medical Device, Class Is as per Medical Device Directive 93/42/EEC



Reference	Description
F88445	Tips metallic support M+ 6 slots Without tip and marking

Not a Medical Device



Reference	Description
F88474	Tips metallic support M+ 10 slots Without tip and marking

Not a Medical Device



M+
CATALOG

Information

NOTES 30

YOUR LOCAL CONTACT 31



SATELEC

A company of ACTEON Group

17 Av. Gustave Eiffel,
ZI Phare
33700 Mérignac
France



info@comegmedical.com

www.comegmedical.com

Non contractual document - Ref. 707258B - 09/2023 - Copyright © 2023 SATELEC. All rights reserved.
No information or part of this document may be reproduced or transmitted in any form without the prior permission of SATELEC.

