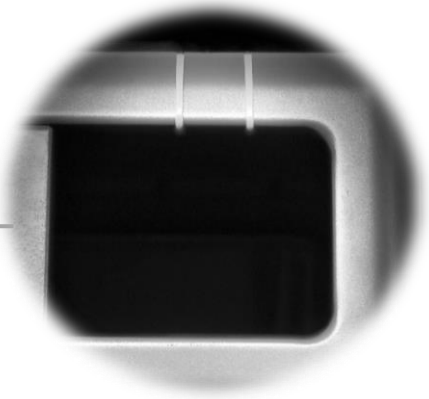
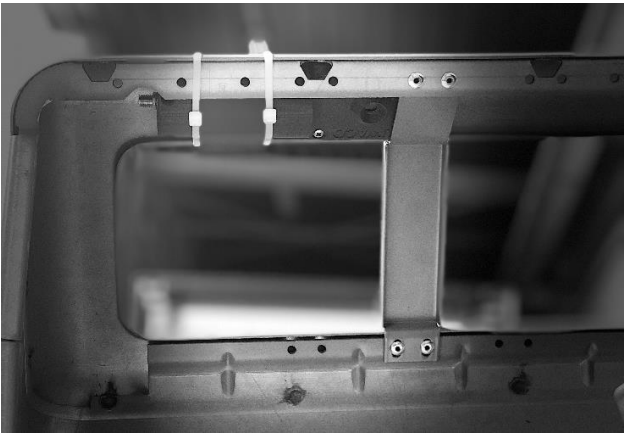


Installation The Bin Thing | Bammens Type Capitole | Without drilling mounting holes.



By using 2 stainless steel straps there is a mounting option without drilling holes. The rust protection of the waste basket remains intact.



The sensor is mounted invisibly in the door and is in that position perfectly installed for correct measurement. In this way, there is no obstruction from the sensor when emptying the Capitole
