

STRATEGISCH DOEL UITWERKEN

& berekenen



A horizontal dashed-line box with rounded ends, intended for notes or calculations.



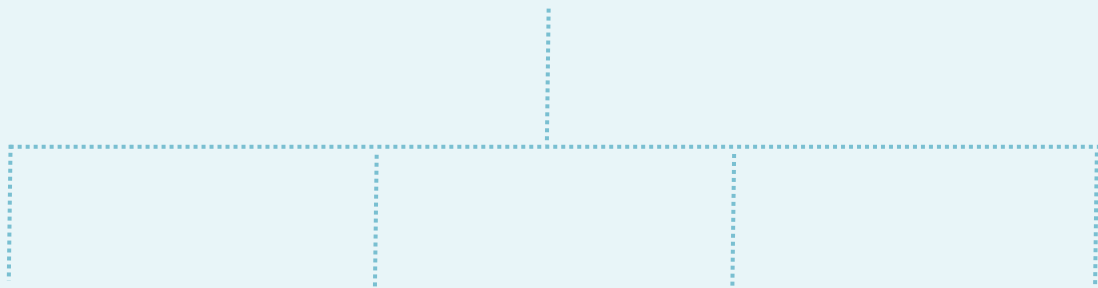
A horizontal dashed-line box with rounded ends, intended for notes or calculations.

STRATEGISCH DOEL UITWERKEN

& berekenen



[Empty rounded rectangular box for the strategic goal]



[Empty rounded rectangular box for financial details]

[Empty rounded rectangular box for human resources details]

[Empty rounded rectangular box for real estate details]

[Empty rounded rectangular box for tools/equipment details]

STRATEGISCH DOEL UITWERKEN

& berekenen



omzet

€

kosten

€

winst

%

uurtarief

€

STRATEGISCH DOEL UITWERKEN

& berekenen



organigram

A large, empty rectangular area with a dashed blue border, intended for drawing an organizational chart.

STRATEGISCH DOEL UITWERKEN

& berekenen



m²

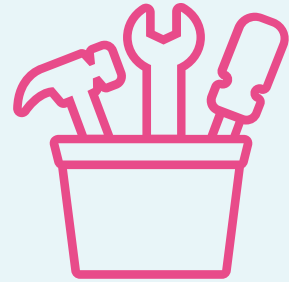
kopen

bouwen

inrichten

STRATEGISCH DOEL UITWERKEN

& berekenen



hardware

€

software

€

tools

€

andere

€