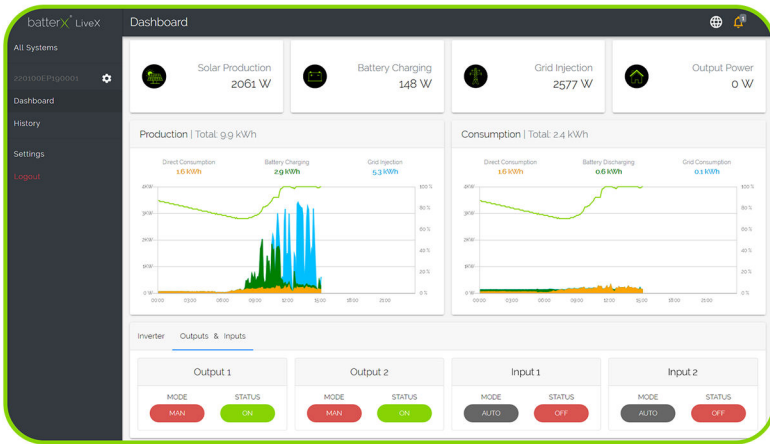


# liveX Home

developed by batterX®

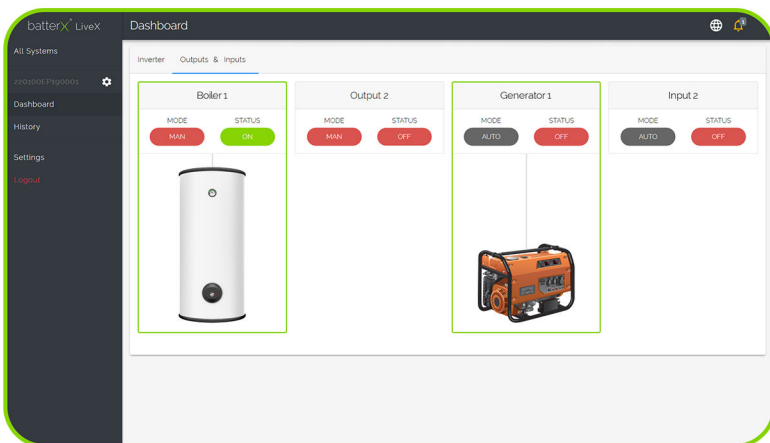
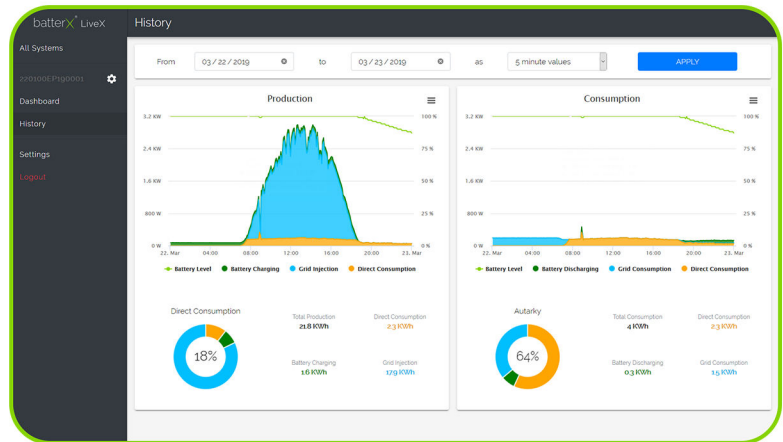
## MONITORING- AND CONTROLLING TOOL

liveX is compatible with all web browsers, computers and mobile devices.



Live-dashboard with energy flow diagram and indication of all parameters: PV, battery, grid, consumption.

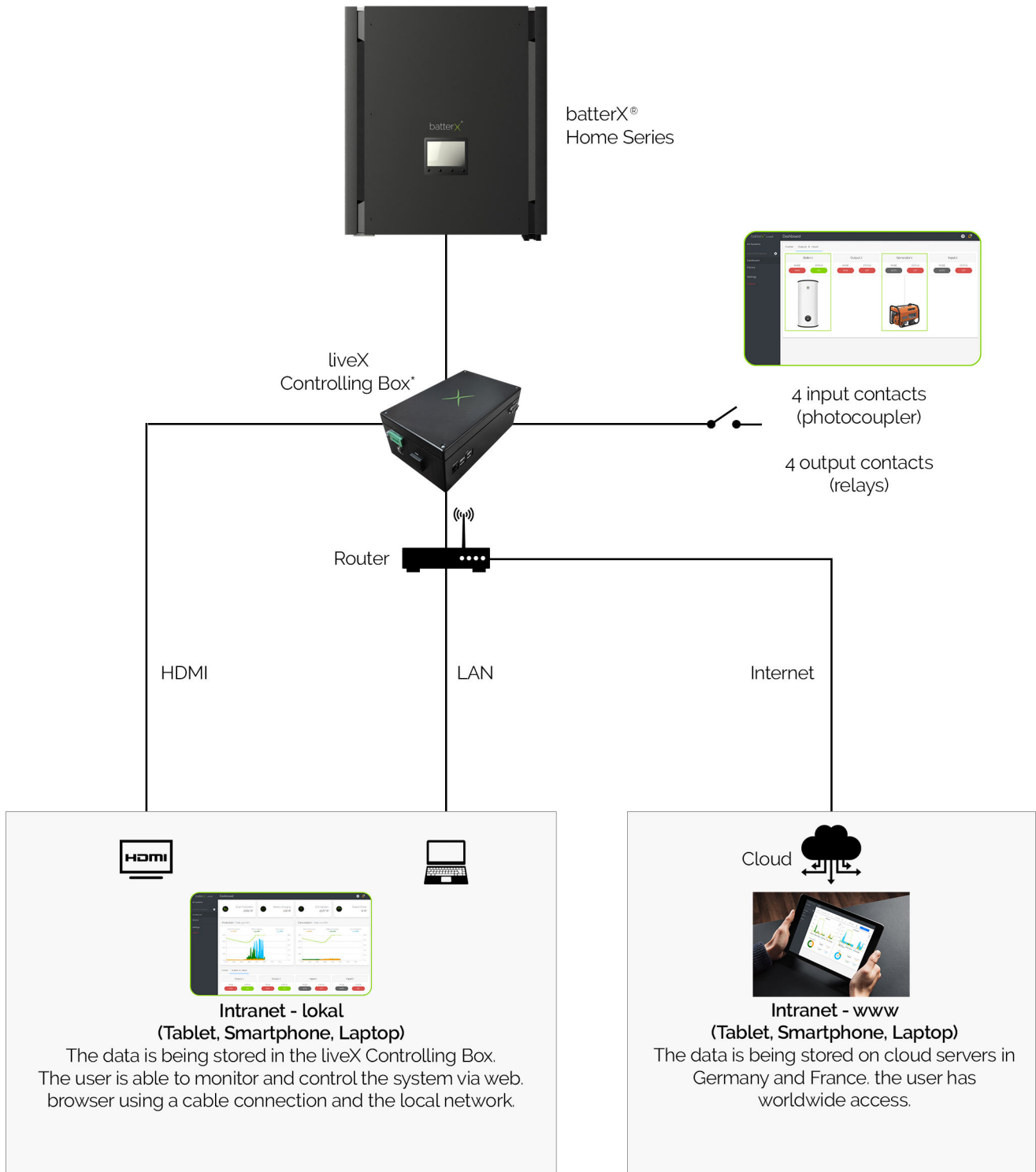
Current and former daily, weekly and monthly reports for production and consumption analysis



Activating programmable relay contacts the energy management tool becomes smart. Hereby it's possible to communicate with several energy sources like a diesel genset and loads which can be switched on or off depending on the customer requirement.

# liveX Home

Kommunikation



\*Cloud-based monitoring and controlling: also available for local networks for monitoring and controlling, with adjustable feed-in limitation (Example: German EEG 70%). 8 programmable contacts for controlling external devices, such as load or generators. 4 input dry contacts and 4 output relay contacts are available to be programmed in the liveX monitoring

Hardware: liveX Controlling Box (240 x 140 x 95 mm), Energy Meter (100 x 75 x 65 mm), cables.

Software: desktop and mobile browser version, Android widget.

A separate software to adjust the parameters of the system in the hybrid inverter (for engineers, service and maintenance) is included in the price