

SUMMER 2019

32
STYLES

FASHION

TURBAN



Confort

Comfort

Bambou

Bamboe

Traitements agressifs, problèmes de peau, chute de cheveux....Quand on traverse une telle épreuve un peu de douceur et de confort est toujours le bienvenu. C'est pourquoi, Elitecoiff a pensé à associer ses turbans au tissu bambou. Un tissu moderne, aux nombreuses qualités et surtout d'une douceur exceptionnelle.

Agressieve behandelingen, huidproblemen, haaruitval...Wanneer men zo'n zware beproeving doorstaat, zijn een beetje zachtheid en comfort altijd welkom. Daarom heeft Elitecoiff ervoor gekozen om bamboestof te gebruiken voor zijn tulbanden. Een moderne stof met veel kwaliteiten en vooral een uitzonderlijke zachtheid.

Coton

Katoen

Nos bandeaux et bonnets sont réalisés à partir du coton produit sous le label OEKO-TEX® Standard 100, un coton sans trace de produit chimique et conforme à la législation et réglementation en vigueur concernant l'usage des substances nuisibles. De plus, cette maille laisse la peau respirer sans accumuler la transpiration.

Onze hoofdbanden en mutsen worden gemaakt met een katoenproduct onder het label OEKO-TEX® Standard 100, een katoen zonder sporen van chemische producten en conformde geldige wetgeving betreffende het gebruik van schadelijke stoffen. Bovendien laat deze maas de huid ademen zonder ophoping van zweet.

Qualité

Kwaliteit



SOMMAIRE

INHOUD

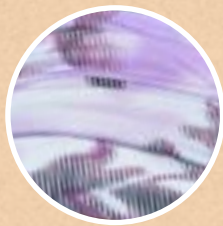
☁ AALEEN 11	☁ LANZAROTE 38
☁ AURELIE 6	☁ LARA 4-5
☁ BASTIA 17	☁ LENA 22-23
☁ BORA BORA 21	☁ LILLY 18-19
☁ BUNIA 24	☁ MALLAWI 17
☁ CHIARA 20	☁ MANILLE 34
☁ CHYPRE 26	☁ CHYPRE 26
☁ DORIANNE 30	☁ MECHE AUDREY... 30
☁ EDEA 7	☁ MEXICO 47
☁ EDITH 44-45	☁ MIA 28-29
☁ ELLA 12-13	☁ NAO 40-41
☁ ELISSA 35	☁ PALERME 46
☁ ELSA 8-9	☁ PROTECT SKIN... 30
☁ FLORENCE 10	☁ SHANGAI 39
☁ JADE 25	☁ SORRENTE 33
☁ JENNY 42-43	☁ VALENTINE .. 36-37
☁ JULIA 16	

NEW





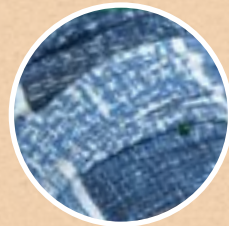
LARA



125



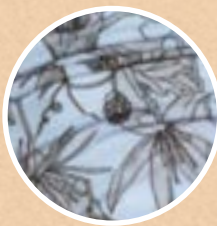
153



155



166



172



185



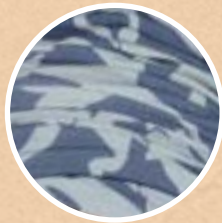
188



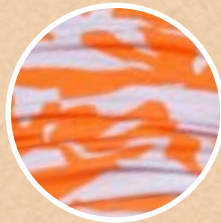
193



197



202



207



AURÉLIE



1/01 1/02 1/03 1/05



1/06 1/07 1/14 1/15



1/09 1/10 1/11 1/13



1/16 1/17 1/18 1/20



1/21 1/22 1/23 1/24



1/26 1/27 1/28 1/29



1/30 1/33



1/31



1/32



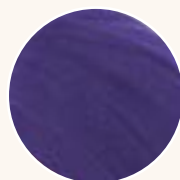
ÉDÉA



BURGUNDY



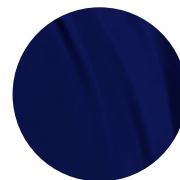
KAKI



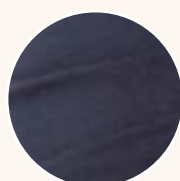
LILA



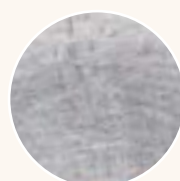
BLACK



BLEU



MARINE



GRIS VIGORE



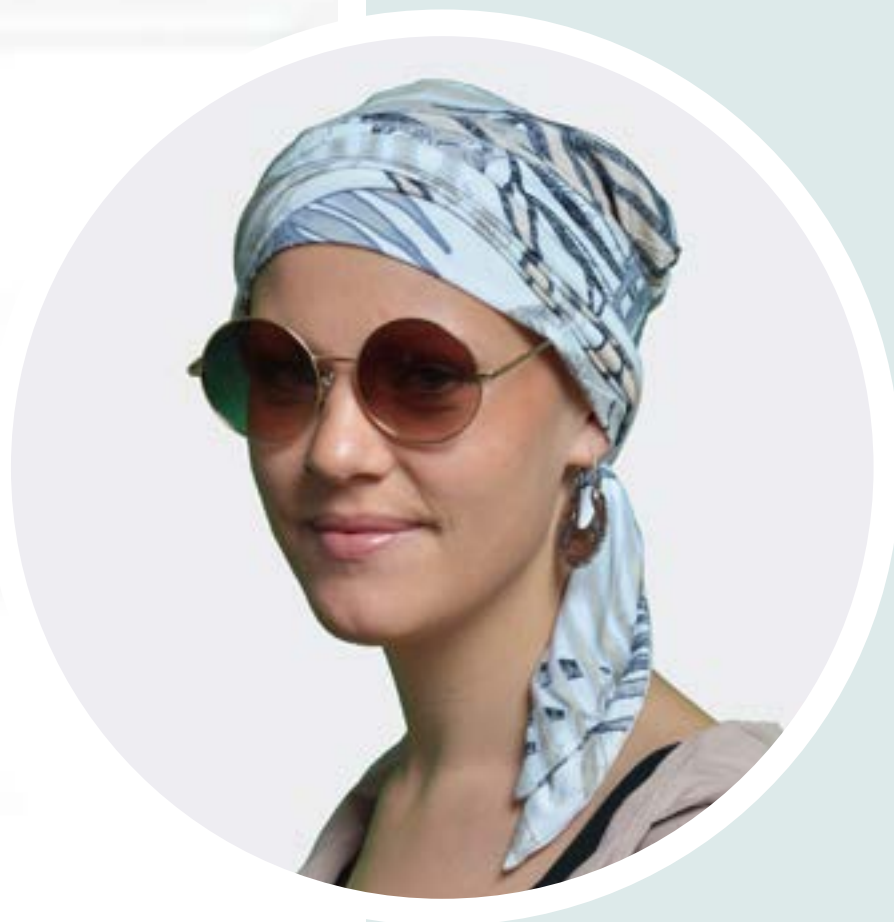
ELSA



À NOUER
OM TE KNOPEN



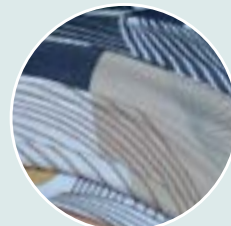
NEW



7/183



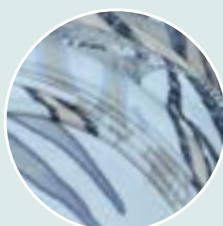
157



161



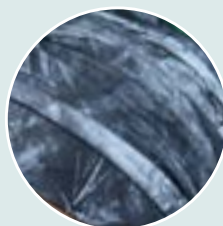
177



178



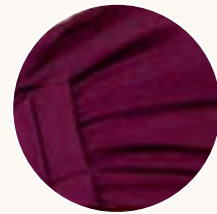
180



191



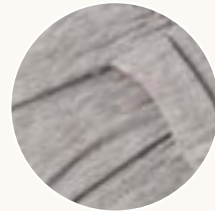
FLORENCE



BURGUNDY



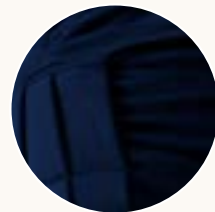
BLUE



GRIS
VIGORE



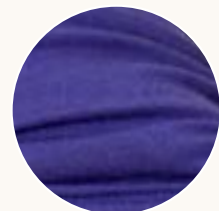
BLUE
PETROL



MARINE



KAKI



LILA





1/01



1/02



1/04



1/05



1/06



1/07



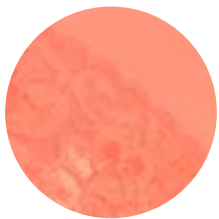
1/08



1/09



1/10



1/11



1/12



1/13



1/14



AALEEN



ELLA



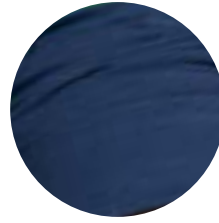
6



7



21



23



63



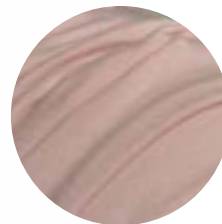
84



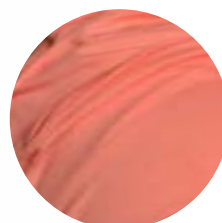
9



124



33



107



NEW





Nos partenaires adhèrent à l'association Take Care of You, qui organise des ateliers onco-esthétiques gratuits avec des professionnels du secteur.

Parce que se sentir bien dans sa peau est un pas vers la guérison, nos équipes sont là pour vous accompagner et vous donner des conseils utiles.

Onze partners zijn lid van de vereniging "Take Care of You", die gratis onco-esthetische workshops organiseert met professionals uit de sector.

U goed voelen is immers een stap naar genezing. Onze teams zijn er om u te begeleiden en nuttig advies te geven.

Association/Vereniging Take Care of You

Rue Plomcot, 6A - 6224 Fleurus
Tél: 0032 (0)496 501 577

Email: info@takecareofyou.be
www.takecareofyou.be - www.takecareofyou.be/nl






*Take Care
of You*



DÉCOUVREZ / ONTDEK
TAKE CARE OF YOU AISBL / IVZW
WWW.TAKECAREOFYOU.BE
WWW.TAKECAREOFYOU.BE/NL

TAKE CARE OF YOU

Efficace sur le terrain, proche de vous en atelier

- Pour se reconnaître dans le miroir
- Pour apporter des solutions esthétiques concrètes et visibles
- Pour échanger des expériences entre patients
- Pour aider à conserver son identité, son image
Pour retrouver sa personnalité
- Pour mener une vie plus agréable durant les traitements
- Pour apprendre les petits gestes au quotidien qui embellissent la vie
- Pour affronter le regard de l'autre sereinement

Efficiënt op het terrein, binnen uw handbereik in een workshop

- Om uzelf te herkennen in de spiegel
- Om concrete en zichtbare esthetische oplossingen te bieden
- Om ervaringen met andere patiënten uit te wisselen
- Om uw identiteit, zelfbeeld te helpen behouden
Om uw persoonlijkheid terug te vinden
- Om een aangamer leven te leiden tijdens de behandelingen
- Om de kleine dagelijkse handelingen te leren die het leven mooier maken
- Om zich rustig op te stellen tegenover de blik van anderen



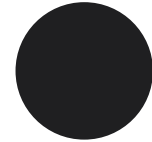
JULIA



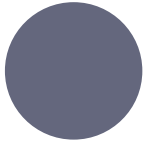
7



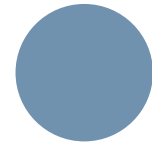
9



21



31



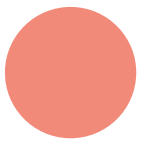
36



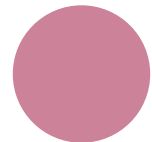
100



103



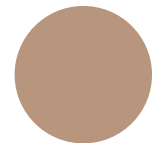
107



108



110



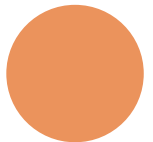
119



124



126



128



129



MALLAWI



À NOUER
OM TE KNOPEN



PINCELADA



BLUELINE



CACHEMIRE



BASTIA



59A



64



65

NEW





LILLY



À NOUER
OM TE KNOOPEN



1



3



4



5



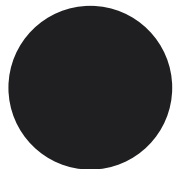
8



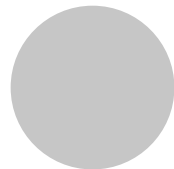
CHIARA



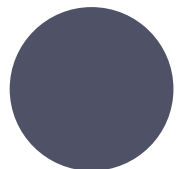
7



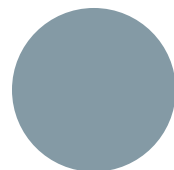
21



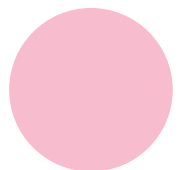
24



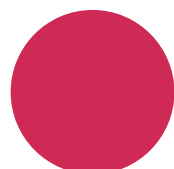
31



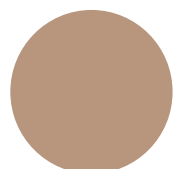
84



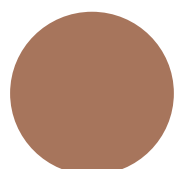
108



118



119



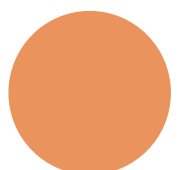
123



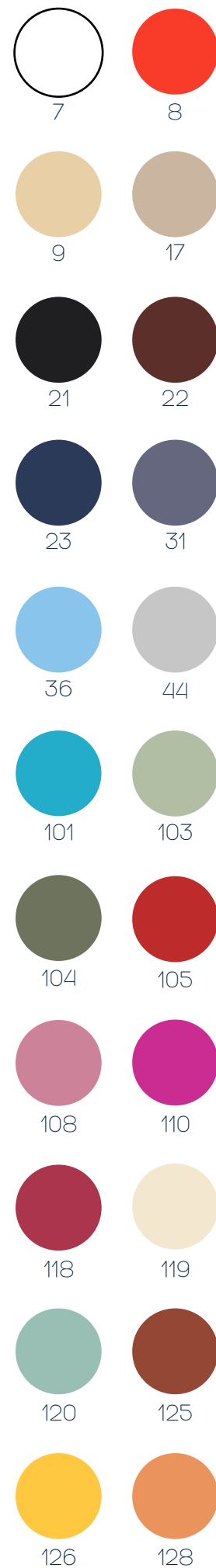
124



126



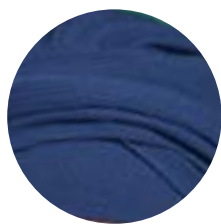
128



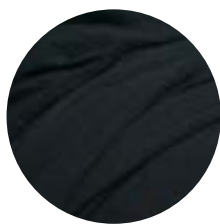
BORA BORA

NEW





78



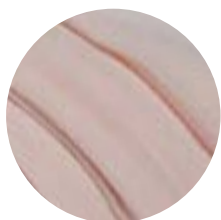
80



81



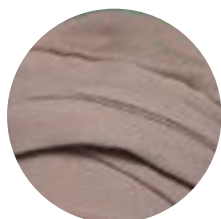
91/92



106



107



108



110



111



112



LENA

À NOUER
OM TE KNOPEN



BUNIA

À NOUER
OM TE KNOPEN



FLO
(VISCOSE)



DANCE
(POLYESTER)



BLUELINE



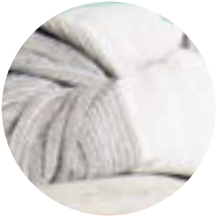
ACUARELA



JADE



B-23/MILAN 1



B-24/LUREX 1



B-64/B-54



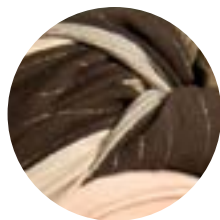
B-84/B-56



B-2/B-40



B-107/B-112



B-127/LUREX 2





4/14-1/30



4/8-1/25



4/17-1/27



4/17 BIS -1/10



4/18-1/04



4/20-33



4/12-1/28



4/6 -1/21



4/10-1/26



4/16-1/07



4/4 -1/29



4/2-16



4/15-1/10



4/9 -1/10



4/13-1/10



4/3-1/10



4/1-1/10



CHYPRE

Foulard/siaal + Aurélie

COMMENT LAVER
VOTRE TURBAN ?

HOE WAST U
UW TULBAND ?

Astuces Tips

Modèle - Model



Tous les tissus utilisés répondent aux normes européennes et sont très bien tolérés même sur des cuirs chevelus sensibilisés

Alle gebruikte stoffen voldoen aan de Europese normen en worden zeer goed verdragen, zelfs op een gevoelige hoofdhuid.

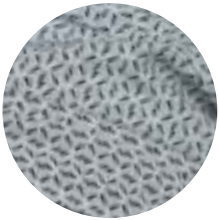
AFIN DE CONSERVER AU MIEUX
VOTRE TURBAN,
VOICI NOS CONSEILS

Pour les tissus fragiles comme la soie, un lavage à la main et à l'eau froide est fortement recommandé. Pour les autres tissus tels que le coton, le lavage à 30° est conseillé. Ne pas tordre le tissu lors de l'essorage, pour ne pas déformer votre turban. Ne pas repasser.

ONS ADVIES

OM UW TULBAND ZO MOOI
MOGELIJK TE HOUDEN

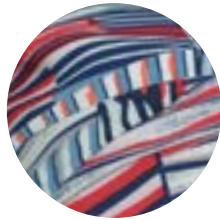
Voor delicate stoffen zoals zijde wordt handwas met koud water ten zeerste aangeraden. Voor andere stoffen zoals katoen wordt wassen op 30° aangeraden. De stof niet uitwringen tijdens het drogen, anders kan uw tulband vervormen. Niet strijken.



21



29



35



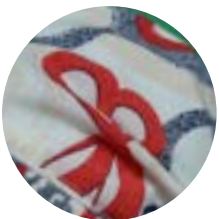
36



38



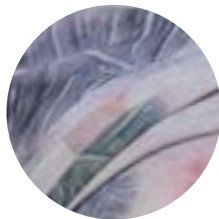
44



45



46



49



51



53



MIA
SILK

À NOUER
OM TE KNOPEN

NEW





* Mèche AUDREY
30/15/25

PROTECT SKIN

Existe aussi en beige
Ook verkrijgbaar in beige

A placer sous la perruque
Te plaatsen onder de pruik

Améliore le confort du port de
certaines perruques
Verbeter het draagcomfort van
sommige pruiken

Peut s'humidifier l'été
U kan het bevochtigen in de
zomer



Turban
LENA

* Existe aussi en coloris - ook
verkrijgbaar in de kleuren :

Châains - Kastanje
10 - 2/4 - 4/6 - 4/8 - 8

Blonds
14/26 - 234/23A - 23A/26 - 24.18T
- 30/15/25 - 88R - 26 - 30

Tons chaud - Warme tinten
33 - 33.32T

Gris - Grijs
151.56.60H



DORIANE

Bonnet de bain - Badmuts



1/01



1/03



1/04



1/05



1/06



1/07



1/09

« Dans mon intimité.
*In mijn vertrouwde
omgeving.* »



« Ma chevelure de remplacement
la journée pour ma vie sociale.
www.lecheveu.be/perruques-femme/

*Overdag mijn pruik voor mijn
sociaal leven.*

www.hethaar.com/damespruiken/ »

« Mes turbans le soir
en famille.
www.lecheveu.be/turbans/

*'s Avonds mijn tulbanden in
de huiselijke kring.*

www.hethaar.com/tulbanden/

»







SORRENTE



1/01



1/07



1/09



1/12



1/16



1/17



1/27



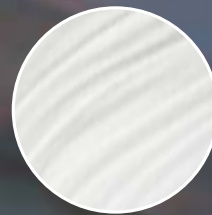
1/30



1/33



1/37



1/41



1/42



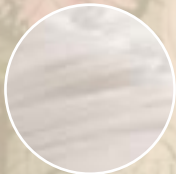
1/50



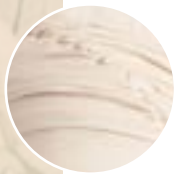
MANILLE



3



7



9



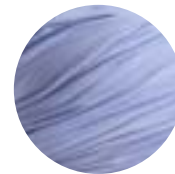
17



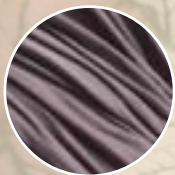
21



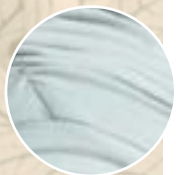
31



36



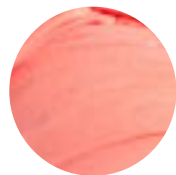
44



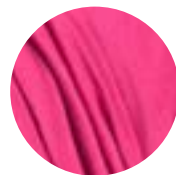
103



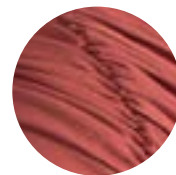
105



107



110



125



43



46



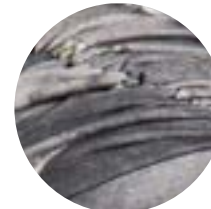
89



111



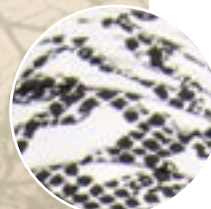
112



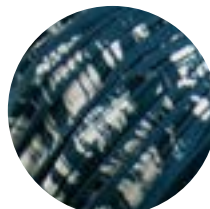
114



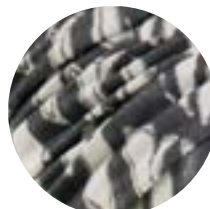
115



135



136



137



142



ELISSA



À NOUER
OM TE KNOPEN



64/50



13/46



1/52



9/22



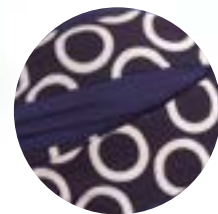
9/54



20/48



17/1A



23/silk8



9/49



64



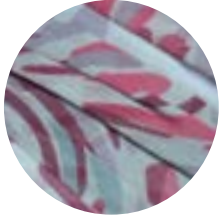
76



66



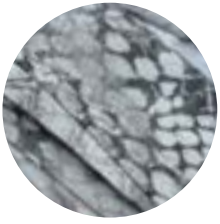
68



79



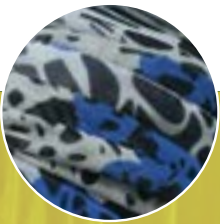
71



74



82



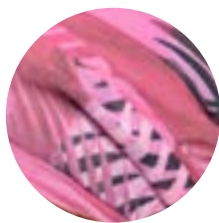
78



81



65



77



85



69



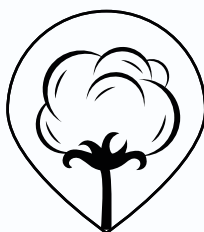
84



80



NEW



VALENTINE



À NOUER
OM TE KNOPEN

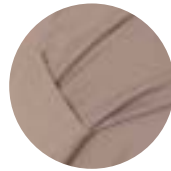




LANZAROTE



1/09



1/17



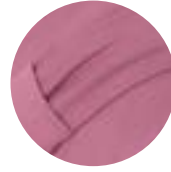
1/07



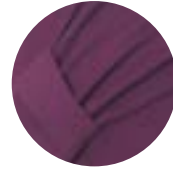
1/27



1/41



1/30



1/42



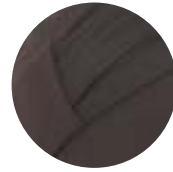
1/33



1/12



1/37



1/01



1/16



1/50





SHANGAI



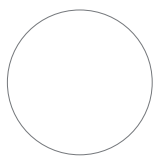
105



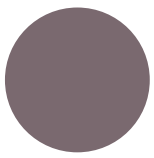
36



31



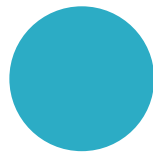
7



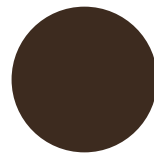
44



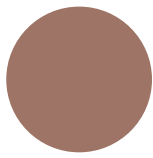
110



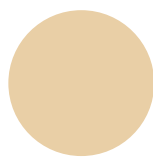
108



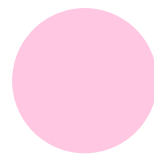
22



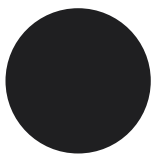
17



9



101

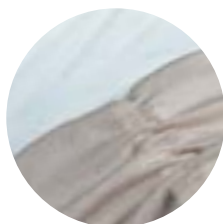


21

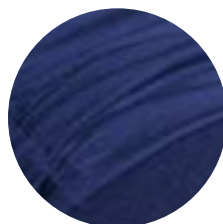
NEW



NAO



9/7



23



63



84

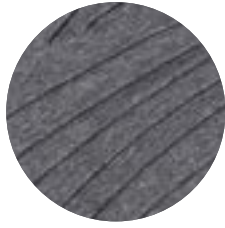


107



124





1/06



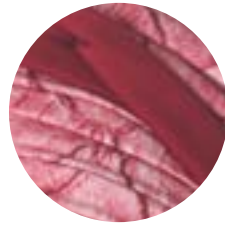
1/22



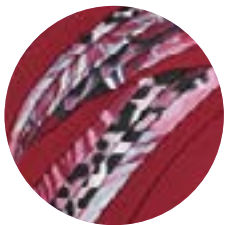
1/23



1/28



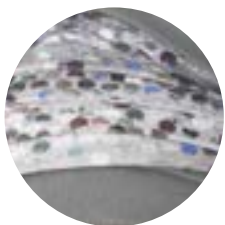
26/54



1/24



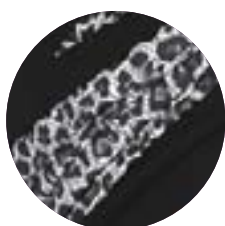
1/25



14/58



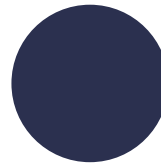
17/57



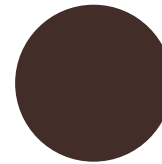
1/27



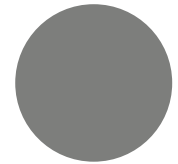
47



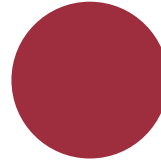
1/02



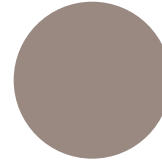
1/03



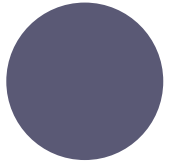
1/19



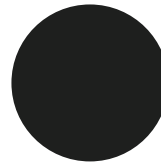
1/09



1/10



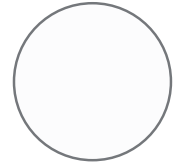
1/13



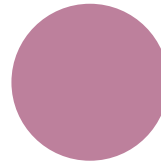
1/15



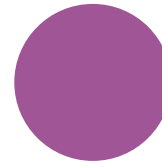
1/16



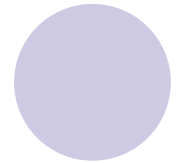
1/08



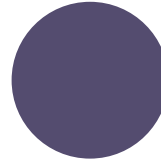
1/04



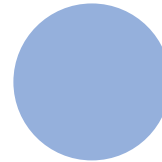
1/05



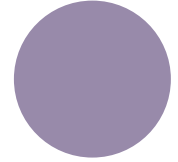
1/14



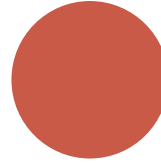
1/20



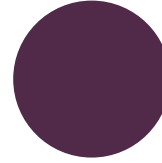
1/21



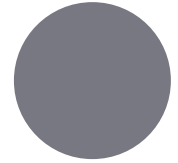
1/17



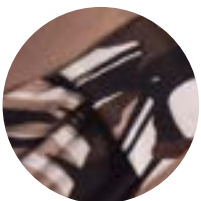
1/07



1/18



1/29



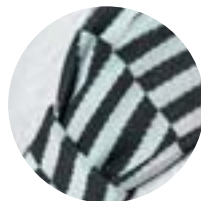
1/39



1/40



1/41



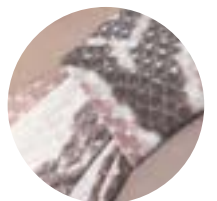
1/85



3/49



14/58



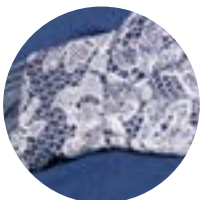
17/57



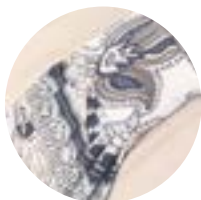
31/53



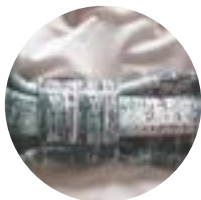
60/59



23/M5



9 TISSU
MILAN 3



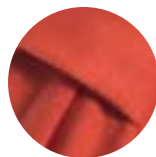
2/J6



24/J1



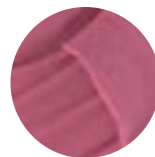
21/J4



1/01



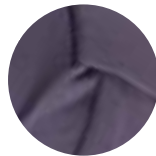
1/02



1/04



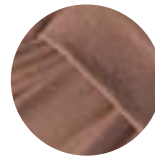
1/05



1/06



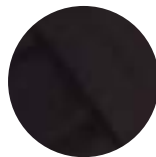
1/07



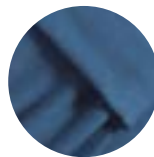
1/08



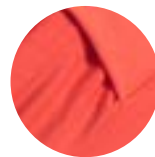
1/09



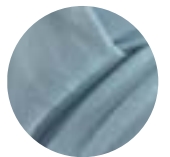
1/10



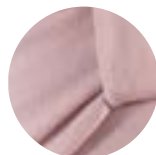
1/11



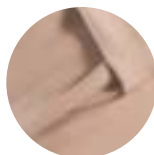
1/12



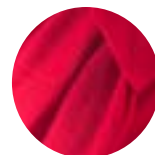
1/14



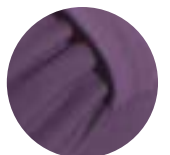
1/16



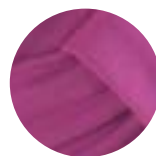
1/22



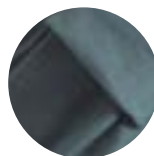
1/24



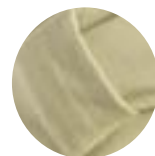
1/25



1/26



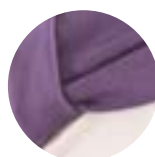
1/27



1/28



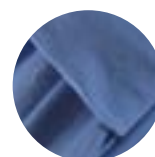
1/31



1/32



1/33



1/34



21/48



26/54



21/J7



PALERME

À NOUER
OM TE KNOPEN



ACUARELA
(VISCOSE)



PINCELADA
(VISCOSE)



CACHEMIRE
(VISCOSE)



FLO
(VISCOSE)



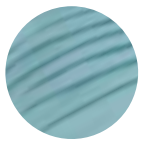
117



118



119



120



121



124



126



128



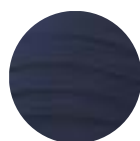
130



1/01



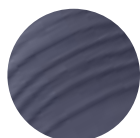
1/07



1/09



1/12



1/16



1/17



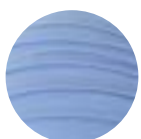
1/27



1/30



1/33



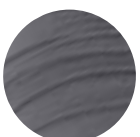
1/37



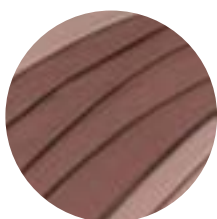
1/41



1/42



1/50



127/123



21/19



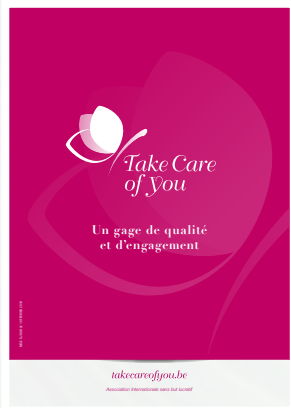
MEXICO



elitecoiff

Rue Plomcot, 6A
6224 FLEURUS - BELGIQUE
Tél : 00 32 (0)71 811996
Fax: 00 32 (0)71 818501
E-Mail: info@elitecoiff.be

VOTRE REVENDEUR / UW VERKOPER



- CONSULTEZ TOUS NOS CATALOGUES EN LIGNE -
www.elitecoiff.be/nos-catalogues
- BEKRIJK ONZE CATALOGUS ONLINE -
www.elitecoiff.be/nl/onze-catalogi

