

DESTINY

RACING TEAM

RX-10FE.0

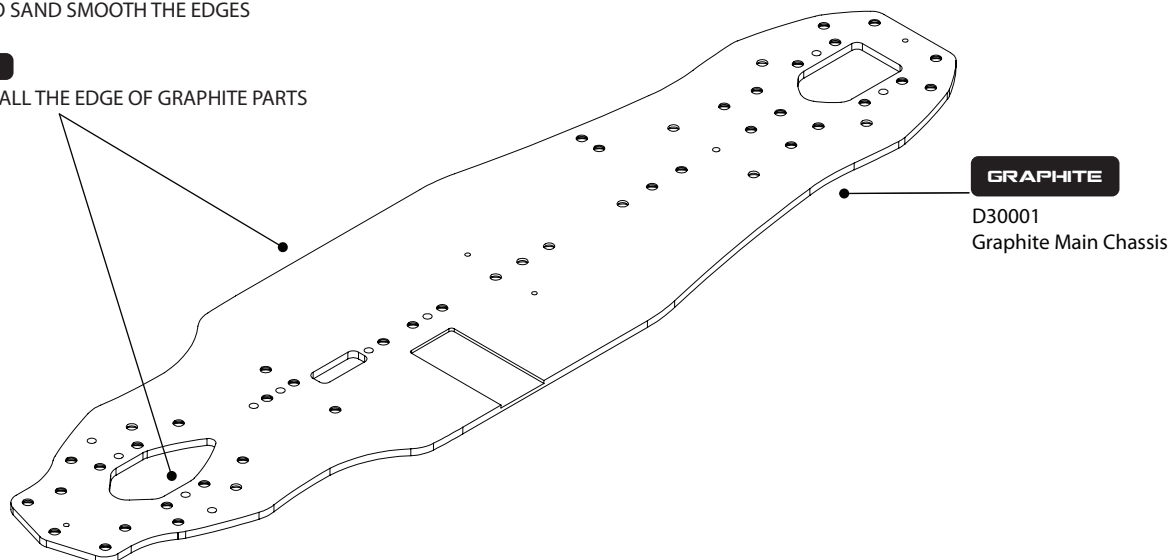
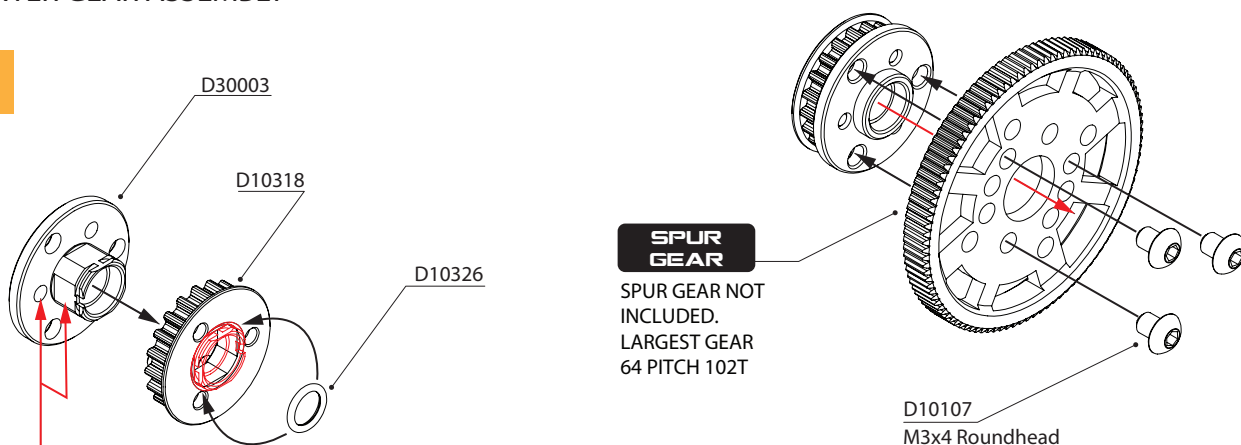
1/10 SCALE COMPETITION FRONT WHEEL DRIVE TOURING CAR KIT

SEAL THE EDGES OF GRAPHITE PARTS FOR PROTECTION**SAND PAPER**

USE SAND PAPER TO SAND SMOOTH THE EDGES

CA GLUE

APPLY CA GLUE ON ALL THE EDGE OF GRAPHITE PARTS

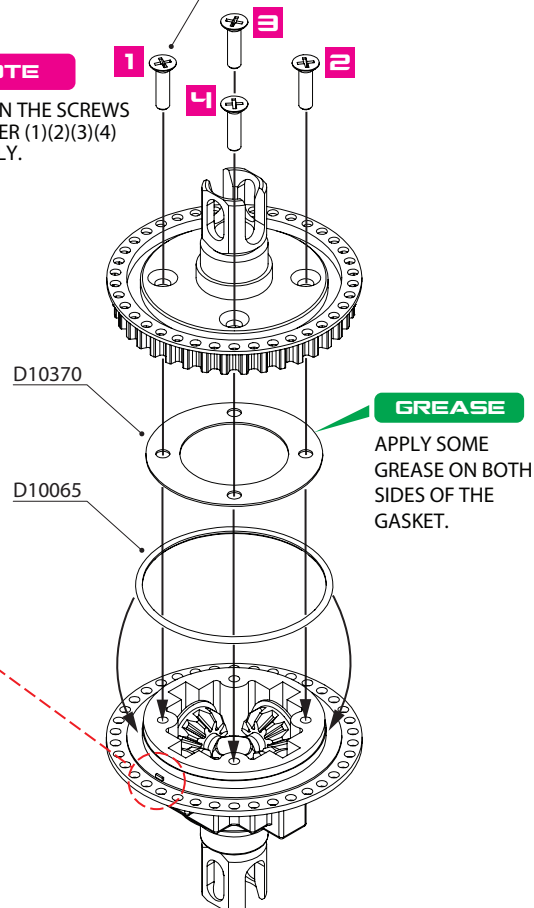
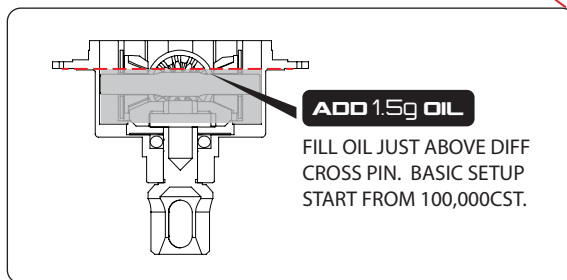
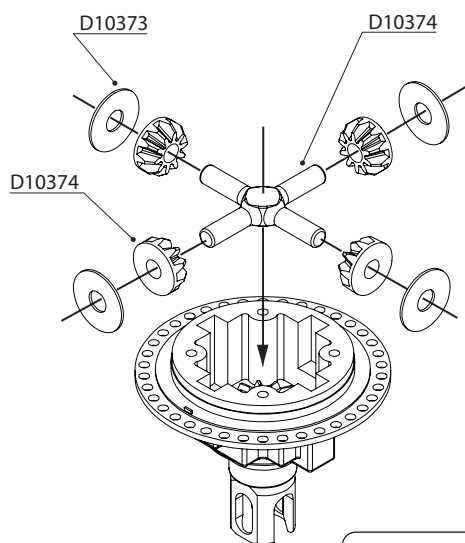
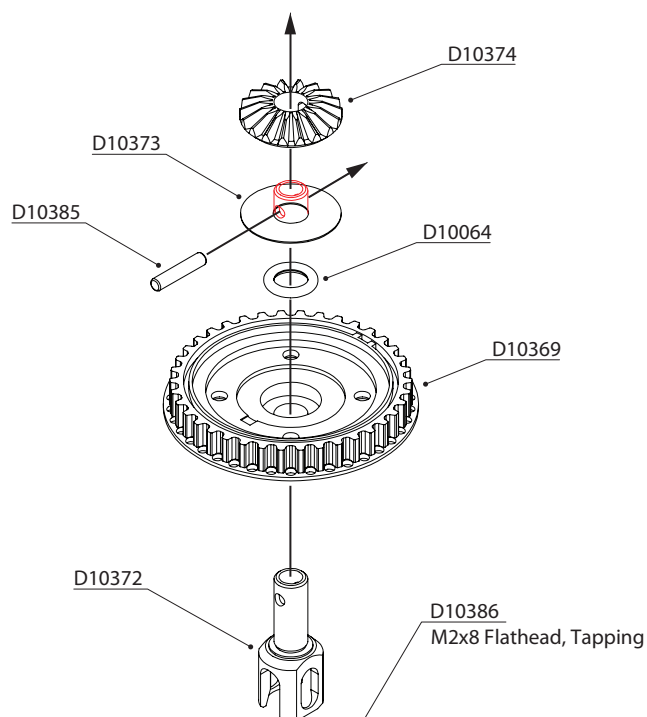
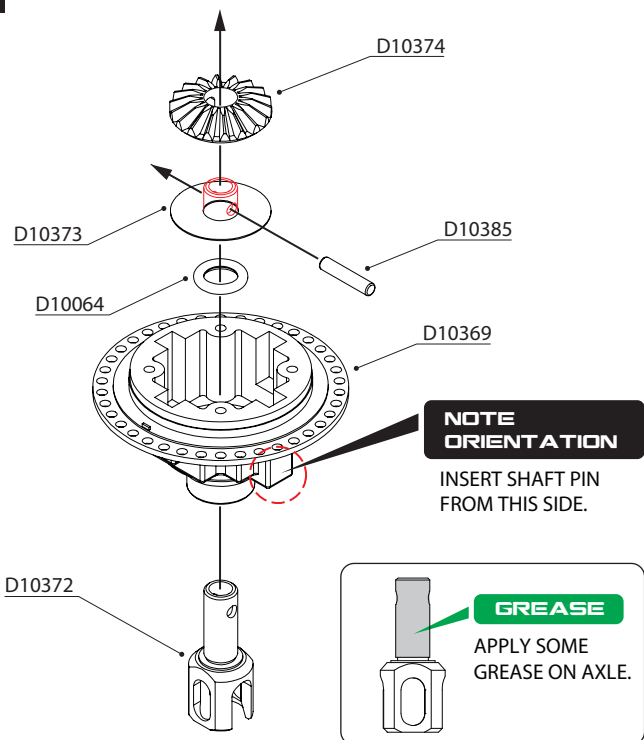
**CENTER GEAR ASSEMBLY**BAG **A****CHECK BEFORE RUN**

ENSURE O-RING IN GROOVE

ENSURE THE SPACE MORE THAN 1.0mm

- D10107 M3x4 Roundhead Screw, 10 pcs
- D10318 Plastic Center Pulley 20T, 2 pcs
- D10326 O-Ring for Solid LayShaft, 10 pcs
- D30001 RX-10F 3.0 Graphite Main Chassis
- D30003 Aluminum Solid Layshaft

GEAR DIFFERENTIAL ASSEMBLY



D10064 Diff Shaft Sealer O-Ring
D10065 Diff Housing Sealer O-Ring
D10368 Gear Differential Set (38T) V2
D10369 Gear Differential Case Set (V2)
D10370 Differential Seal Gasket (V2)

D10372 Spring Steel Differential Cup (B)
D10373 Differential Washer Set (V2)
D10374 Internal Differential Gear Set (V2)
D10385 Shaft Pin 2x10mm
D10386 M2x8 Flathead Tapping Screw

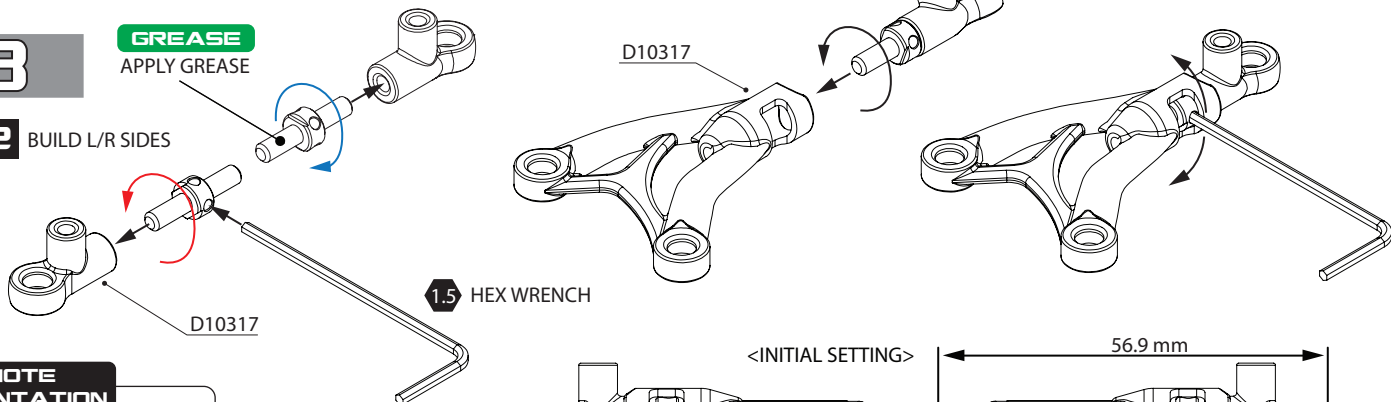
4

FRONT & REAR UPPER ARM ASSEMBLY

BAG **B**

GREASE
APPLY GREASE

X2 BUILD L/R SIDES



NOTE ORIENTATION

LEFT
THREAD

RIGHT
THREAD

D10306

FR

FL

RR

RL

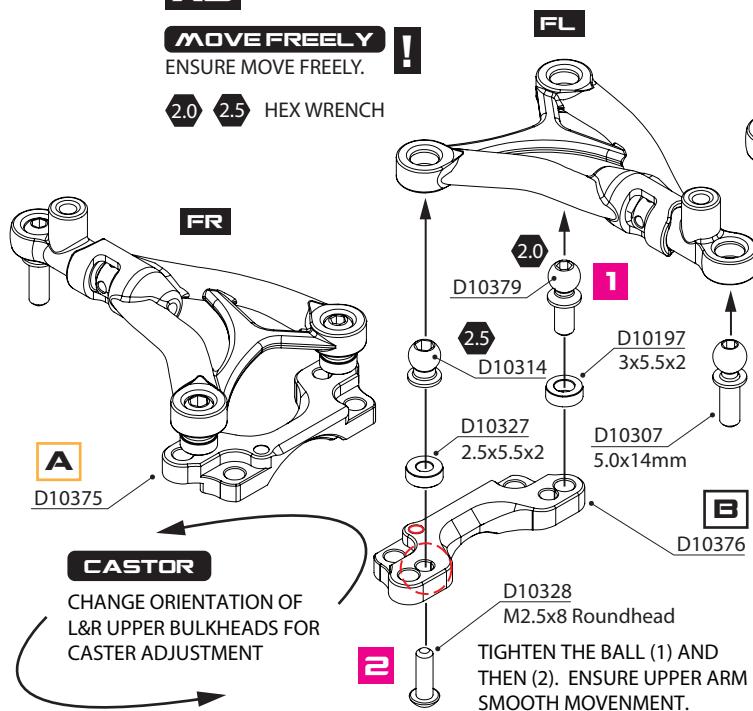
5

FRONT & REAR UPPER BULKHEAD ASSEMBLY

X2 BUILD L/R SIDES

MOVE FREELY !
ENSURE MOVE FREELY.

2.0 2.5 HEX WRENCH



A
D10375

FR

FL

D10379

2.0

2.5

D10197
3x5.5x2

D10314

D10327
2.5x5.5x2

D10307
5.0x14mm

D10376

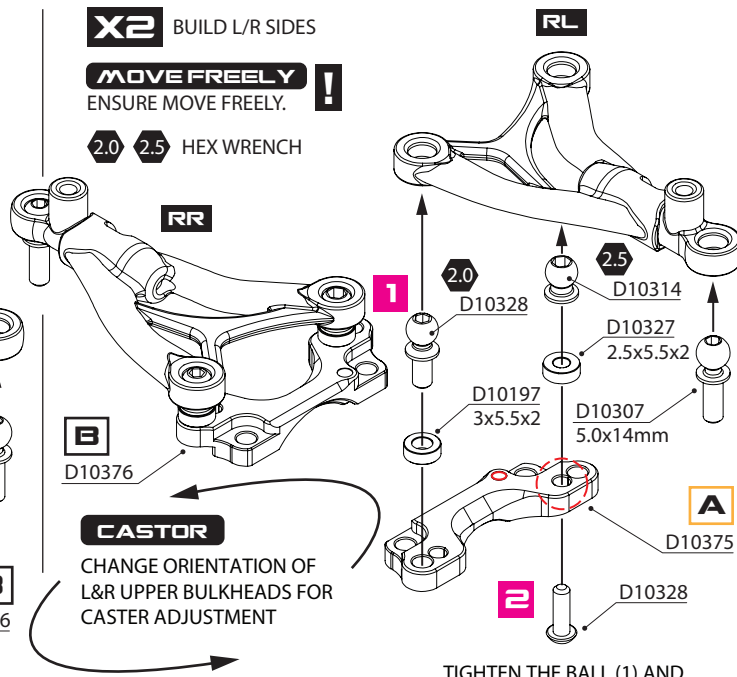
D10328
M2.5x8 Roundhead

2
TIGHTEN THE BALL (1) AND THEN (2). ENSURE UPPER ARM SMOOTH MOVEMENT.

X2 BUILD L/R SIDES

MOVE FREELY !
ENSURE MOVE FREELY.

2.0 2.5 HEX WRENCH



RL

RR

B
D10376

CASTOR

CHANGE ORIENTATION OF L&R UPPER BULKHEADS FOR CASTER ADJUSTMENT

1
TIGHTEN THE BALL (1) AND THEN (2). ENSURE UPPER ARM SMOOTH MOVEMENT.

FRONT CASTER ADJUSTMENT

MARKING
FORWARD

4°

FRONT

<INITIAL SETTING>

MARKING
BACKWARD

5°

LEFT ● MORE ON POWER STEERING

REAR CASTER ADJUSTMENT

5° MARKING
FORWARD

4° MARKING
BACKWARD

REAR

● LESS REAR TRACTION LEFT <INITIAL SETTING>

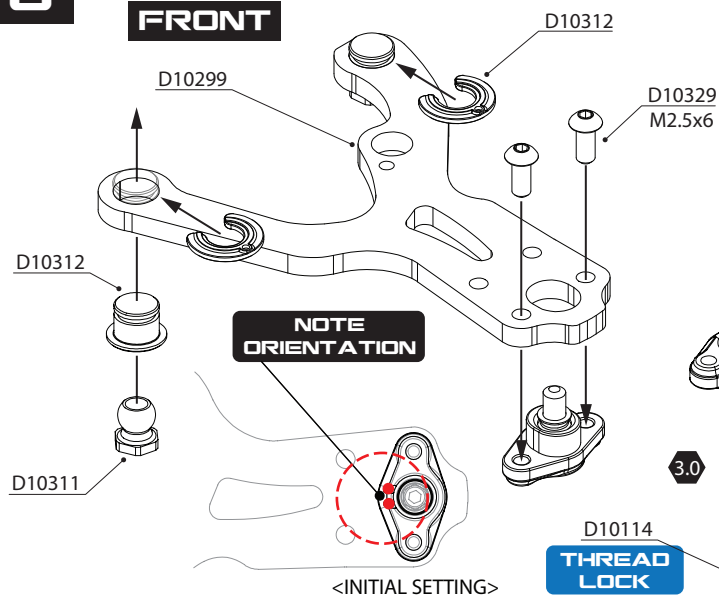
- D10197 3x5.5x2.0mm Aluminum Spacer (Black), 10 pcs
- D10306 Camber Screw M3x18mm, Spring Steel, 2 pcs
- D10307 5.0x14mm Kingpin Ball
- D10314 4.8mm Upper Arm Ball
- D10317 F/R Upper Arm Set, 2 pcs

- D10327 2.5x5.5x2mm Aluminum Spacer (Black), 10 pcs
- D10328 M2.5x8 Roundhead Screw, 10 pcs
- D10375 Aluminum Upper Bulkhead (A), F/R
- D10376 Aluminum Upper Bulkhead (B), F/R
- D10379 4.8x12mm Upper Arm Ball

6

LOWER ARM ASSEMBLY

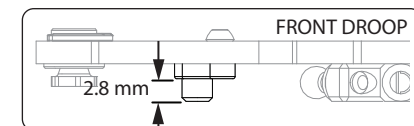
FRONT



X2 BUILD L/R SIDES

MOVE FREELY !
ENSURE SUSPENSION
MOVE FREELY.

IF THE PIVOT BALL IS NOT
MOVE FREELY AFTER
ASSEMBLY, USE SAND
PAPER TO POLISH THE
INNER SURFACE.

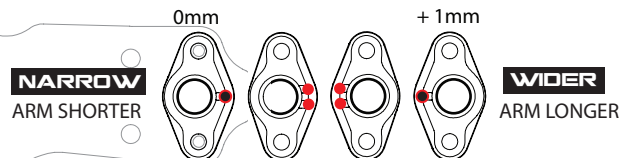


<INITIAL SETTING>

THREAD LOCK

INSTALL DOWNSTOP HOLDER
TO GRAPHITE ARM WITH M2
SCREW FIRST.

F/R LOWER ARM LENGTH (TRACK WIDTH) ADJUSTABLE.



TRACK WIDTH

- FRONT WIDER :
MORE STABLE INTO CORNER
- REAR WIDER :
MAKES MORE STABLE

ARM LENGTH

ADJUST THE ARM LENGTH BY
DIFFERENCE ORIENTATION OF
STEERING BLOCK PIVOT BALL
HOLDER.

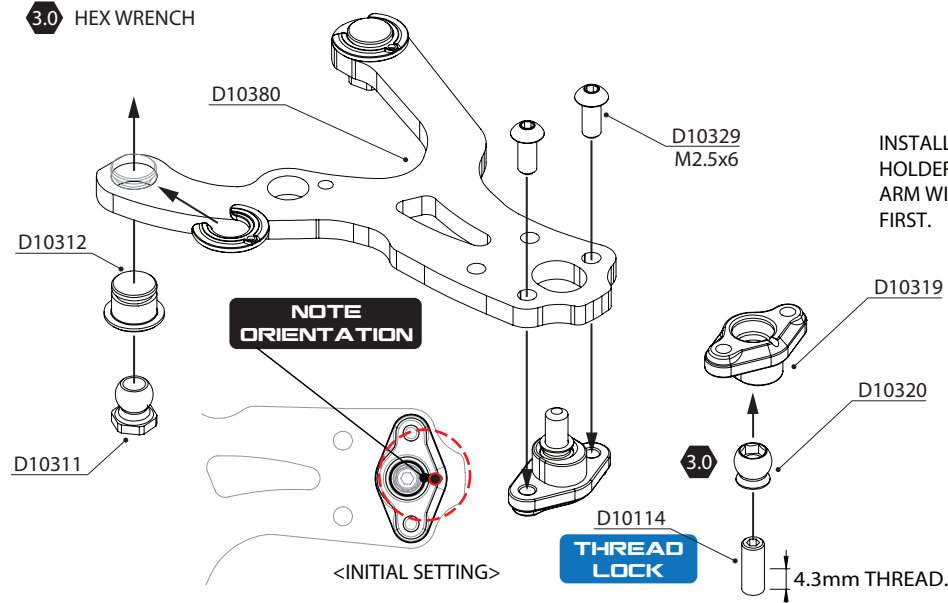
7

REAR

X2 BUILD L/R SIDES

MOVE FREELY !
ENSURE SUSPENSION
MOVE FREELY.

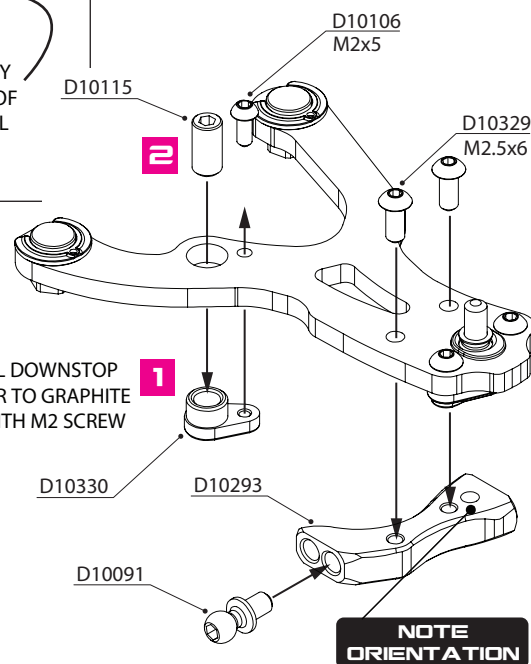
3.0 HEX WRENCH



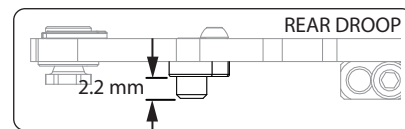
<INITIAL SETTING>

THREAD LOCK

INSTALL DOWNSTOP
HOLDER TO GRAPHITE
ARM WITH M2 SCREW
FIRST.



NOTE ORIENTATION



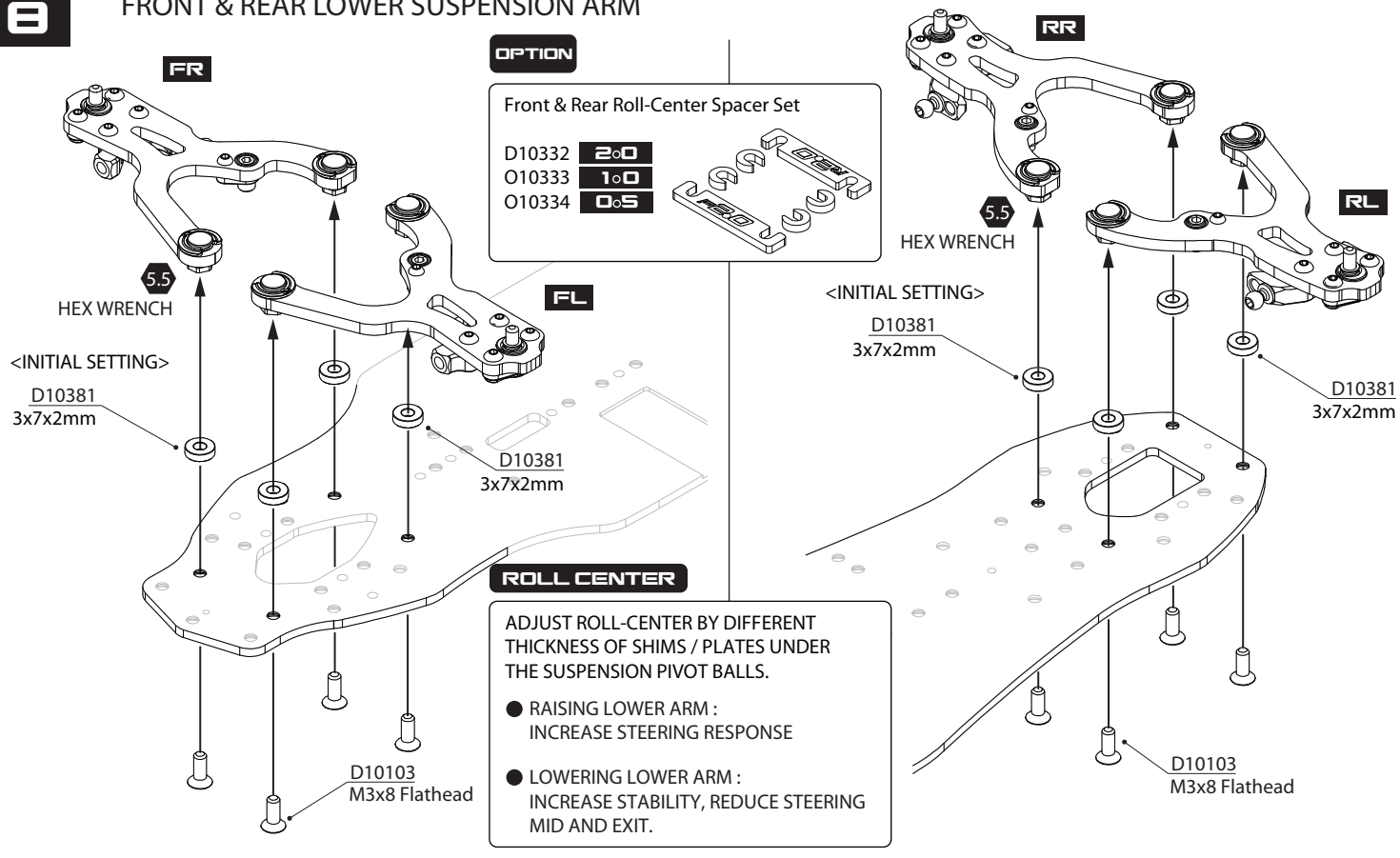
- D10091 Aluminum 4.3x10.8 Ballstud
- D10106 M2x5 Roundhead Screw, 10 pcs
- D10114 M3x8 Set Screw, 10 pcs
- D10115 M4x8 Set Screw, 10 pcs
- D10292 Aluminum Lower Shock Mount, Front
- D10293 Aluminum Lower Shock Mount, Rear
- D10299 Graphite Lower Arm (A)

- D10311 Aluminum Suspension Pivot Ball, 4 pcs
- D10312 Suspension Pivot Ball Bushing, 2 pcs
- D10319 Steering Block Pivot Ball Holder (1&2)
- D10320 5mm Pivot Ball, 4 pcs
- D10329 M2.5x6 Roundhead Screw, 10 pcs
- D10330 Downstop Screw Holder, 4 pcs
- D10380 Graphite Lower Arm (B)



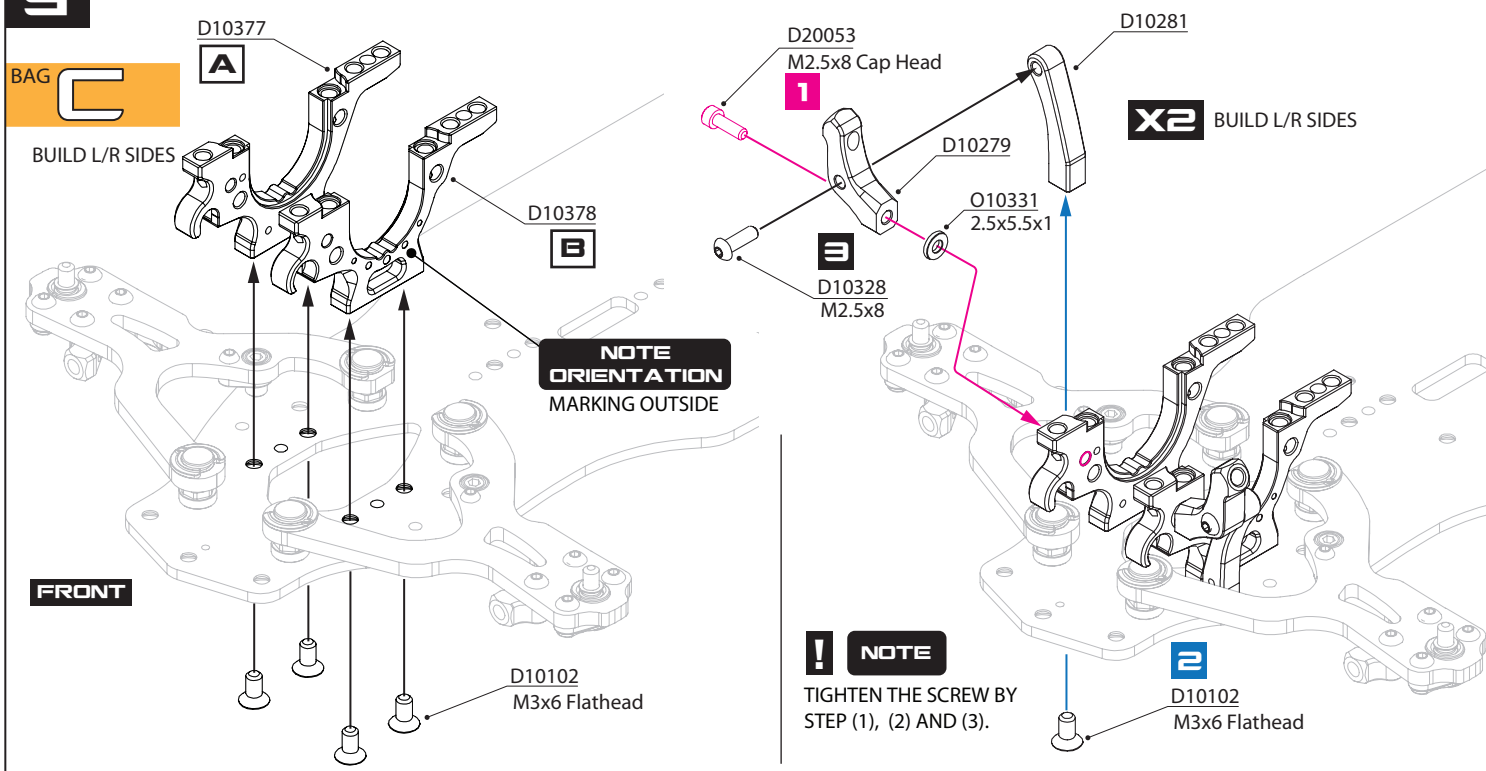
8

FRONT & REAR LOWER SUSPENSION ARM



9

FRONT LOWER BULKHEAD & SHOCK TOWER ASSEMBLY

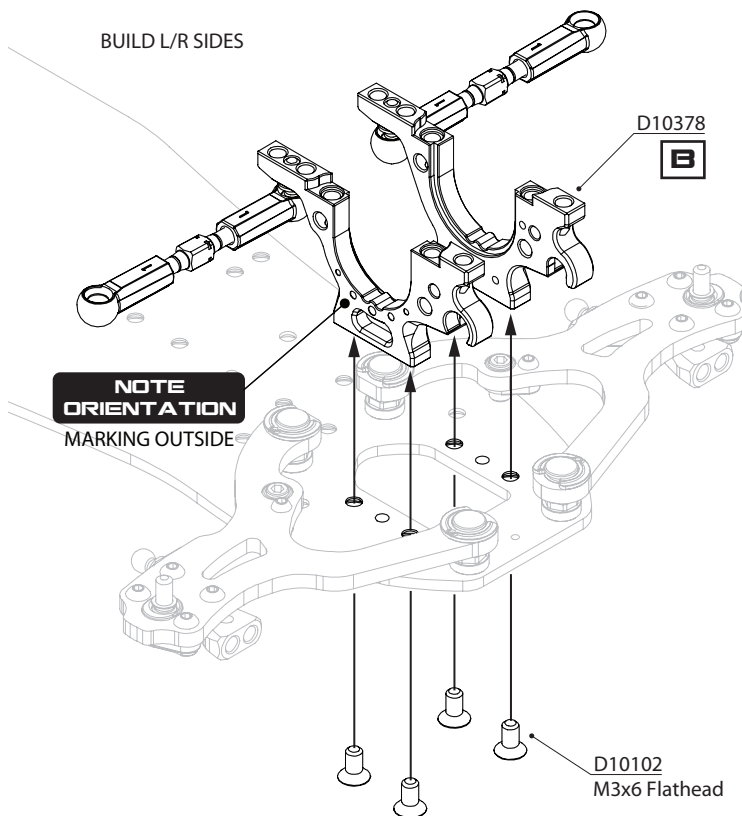
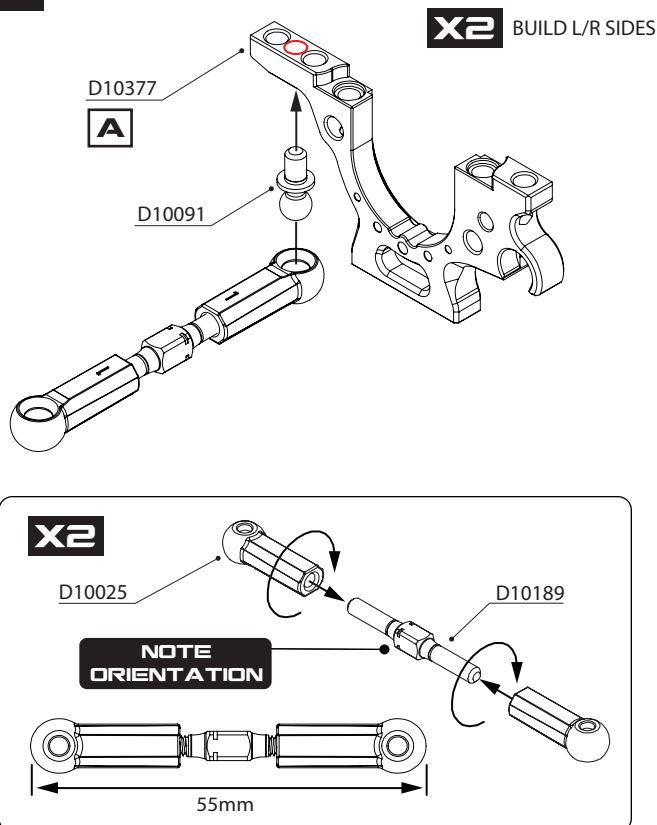


- D10102 M3x6 Flathead Screw, 10 pcs
- D10103 M3x8 Flathead Screw, 10 pcs
- D10279 Aluminum Shock Tower, Front
- D10281 Aluminum Shock Tower Holder (F/R)
- D10328 M2.5x8 Roundhead Screw, 10 pcs

- D10377 Aluminum Lower Bulkhead (A), F/R
- D10378 Aluminum Lower Bulkhead (B), F/R
- D10381 3x7x2mm Aluminum Spacer (Black), 4 pcs
- O10331 2.5x5.5x1mm Aluminum Spacer (Black), 10 pcs
- D20053 M2.5x8 Cap Head Screw, 10 pcs

10

REAR LOWER BULKHEAD ASSEMBLY



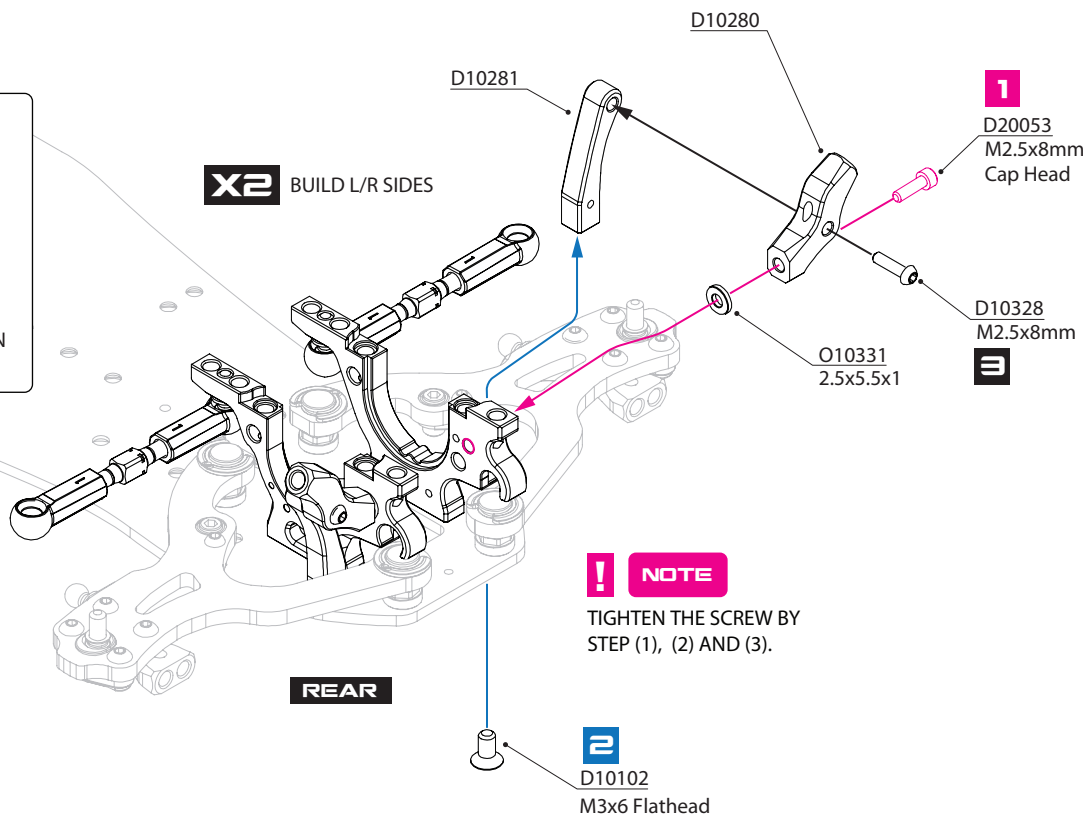
11

REAR SHOCK TOWER ASSEMBLY

REAR TOE - GAIN

TOE ANGLE ADJUST BY DIFFERENT LENGTH OF REAR TURNBUCKLES.

- MORE REAR TOE : TURNBUCKLES SHORTER. MORE REAR GRIP, MORE STABILITY.
- LESS REAR TOE : TURNBUCKLES LONGER. MORE CORNERING SPEED, MORE ON POWER STEERING.



D10025 Plastic Ball Cups (4.3x16mm)
 D10091 Aluminum 4.3x10.8 Ballstud
 D10102 M3x6 Flathead Screw, 10 pcs
 D10189 M3x30mm Turnbuckle, Aluminum, Black
 D10280 Aluminum Shock Tower, Rear

D10281 Aluminum Shock Tower Holder (F/R)
 D10377 Aluminum Lower Bulkhead (A), F/R
 D10378 Aluminum Lower Bulkhead (B), F/R
 D10328 M2.5x8 Roundhead Screw, 10 pcs
 O10331 2.5x5.5x1mm Aluminum Spacer (Black), 10 pcs

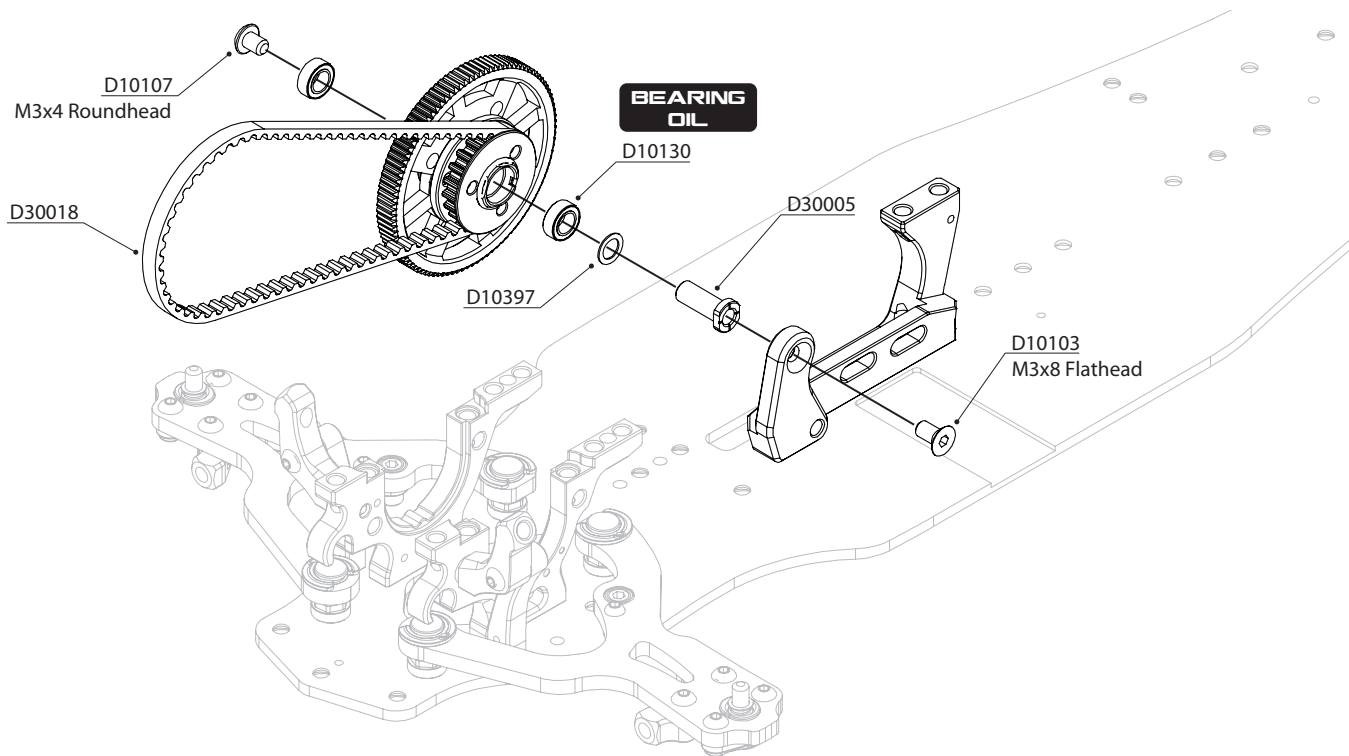
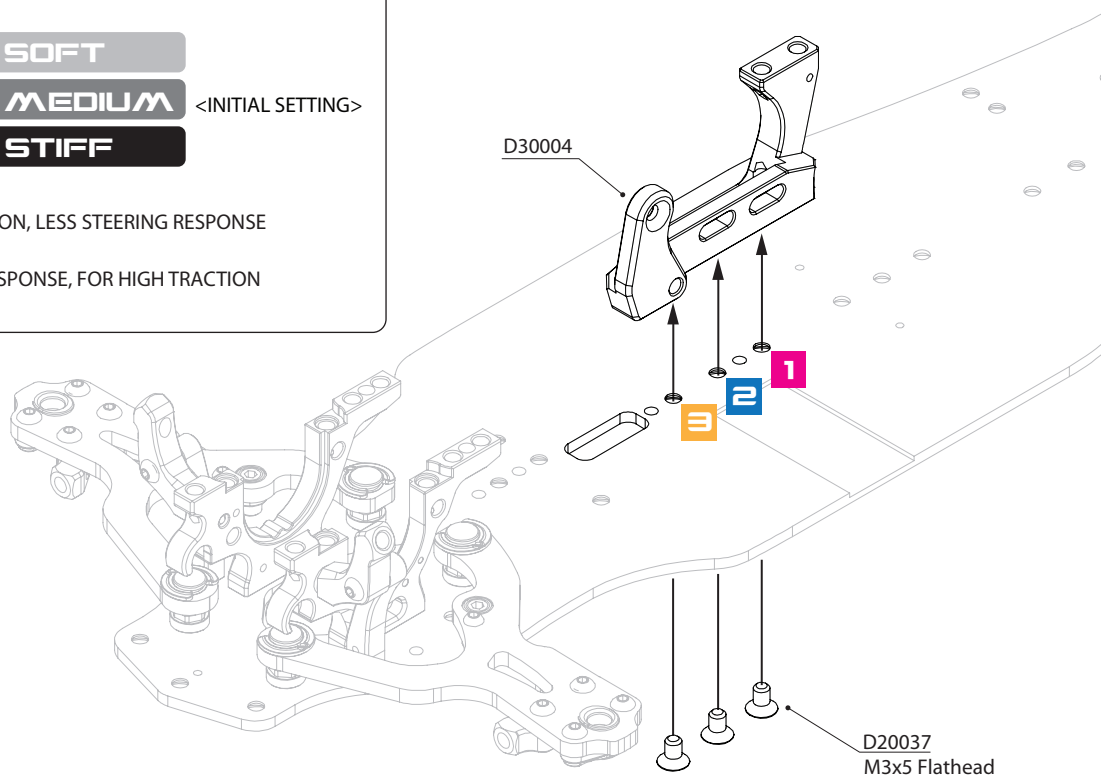
CENTRAL TRANSMISSION ASSEMBLY

MULTI-FLEX CHASSIS

CHASSIS FLEX SETTING ACCORDING TO SCREWS FROM THE MOUNT.

- 1** **SOFT**
- 1 + 2** **MEDIUM** <INITIAL SETTING>
- 1 + 2 + 3** **STIFF**

- **SOFT SETTING:**
MORE REAR TRACTION, LESS STEERING RESPONSE
- **STIFF SETTING:**
MORE STEERING RESPONSE, FOR HIGH TRACTION SURFACE

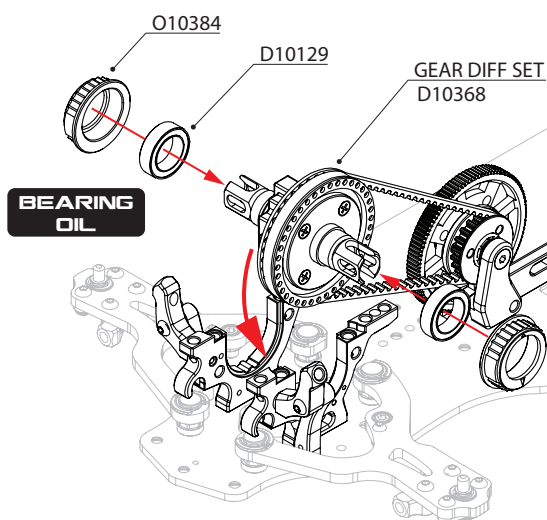
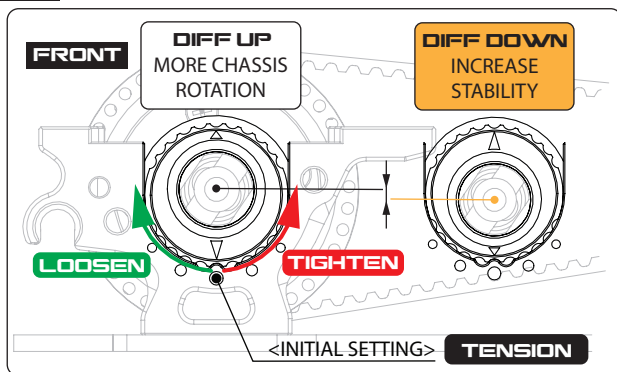


D10103 M3x8 Flathead Screw, 10 pcs
 D10107 M3x4 Roundhead Screw, 10 pcs
 D10130 4x7x2.5 Bearing, 2 pcs
 D10397 M4x6x0.3mm Shim, 10 pcs

D20037 M3x5 Flathead Screw, 10 pcs
 D30004 Aluminum Motor Mount
 D30005 Center Shaft
 D30018 Drive Belt (228)

14

FRONT & REAR DIFFERENTIAL ASSEMBLY



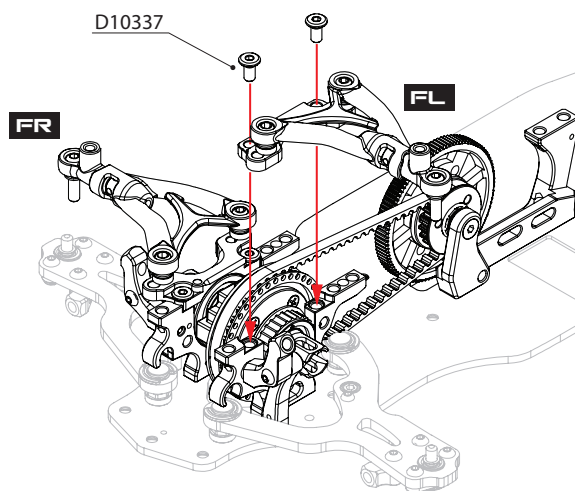
D10337

15

FRONT & REAR UPPER BULKHEAD ASSEMBLY

X2 BUILD L/R SIDES

ROTATE FREELY !
ENSURE TRANSMISSION
ROTATE FREELY.



RR

RL

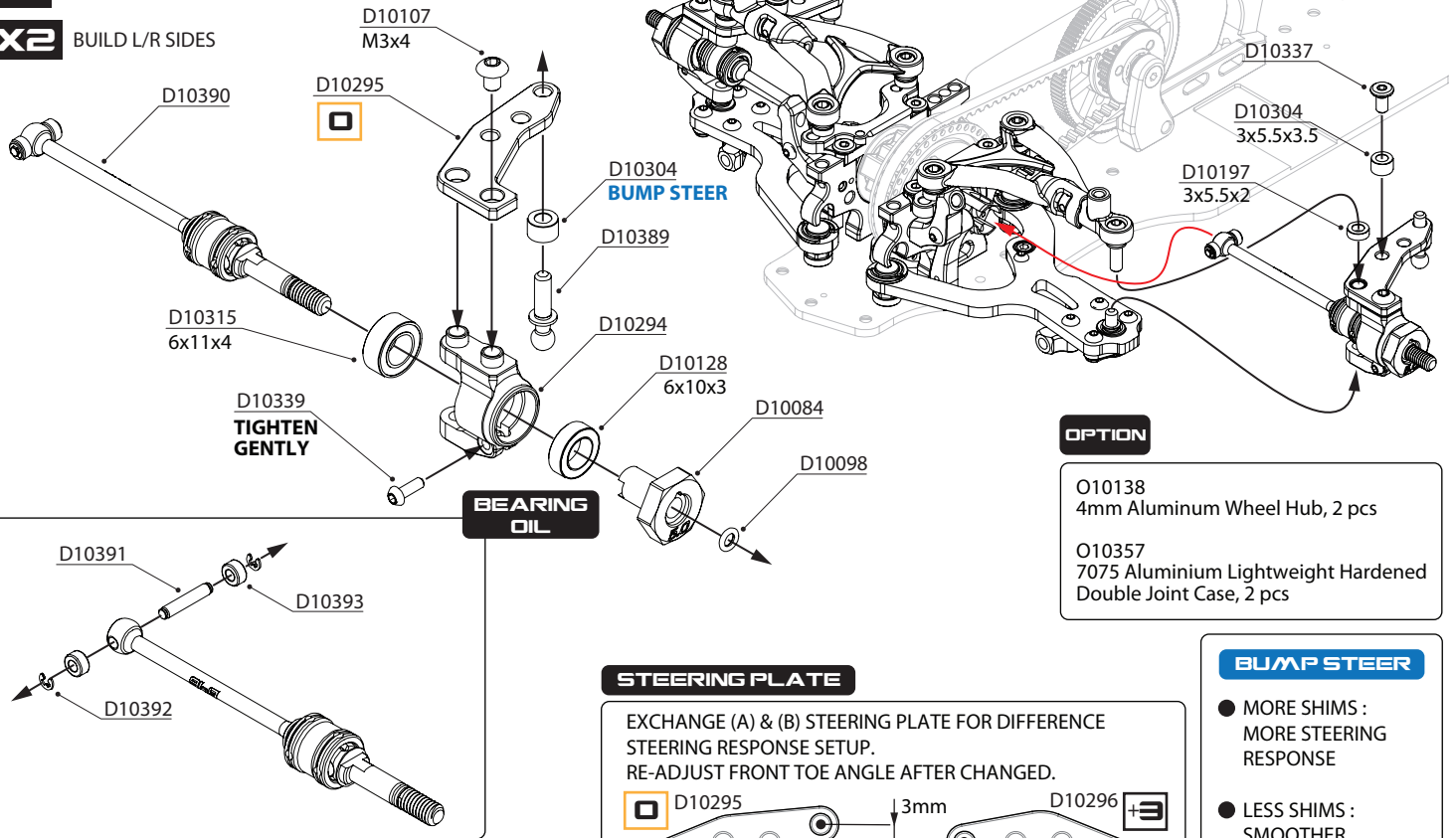
- O10384 Aluminum Adjustment Ball Bearing Hub
- D10129 10x15x4 Ball Bearing (Rubber Seal)
- D10337 M3x6 ULP head Screw, 10 pcs

16

FRONT STEERING BLOCK ASSEMBLY

X2

BUILD L/R SIDES



OPTION

O10138
4mm Aluminum Wheel Hub, 2 pcs

O10357
7075 Aluminium Lightweight Hardened
Double Joint Case, 2 pcs

BUMP STEER

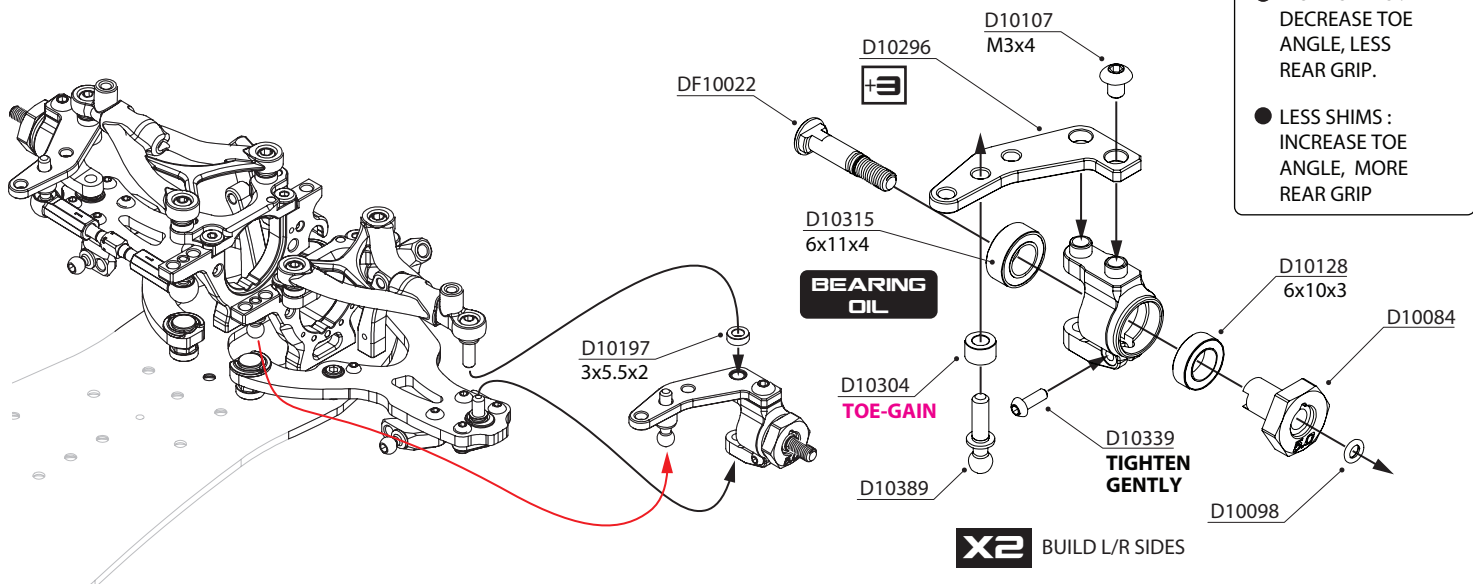
- MORE SHIMS :
MORE STEERING
RESPONSE
- LESS SHIMS :
SMOOTHER
STEERING RESPONSE

TOE GAIN

- MORE SHIMS :
DECREASE TOE
ANGLE, LESS
REAR GRIP.
- LESS SHIMS :
INCREASE TOE
ANGLE, MORE
REAR GRIP

17

REAR STEERING BLOCK ASSEMBLY



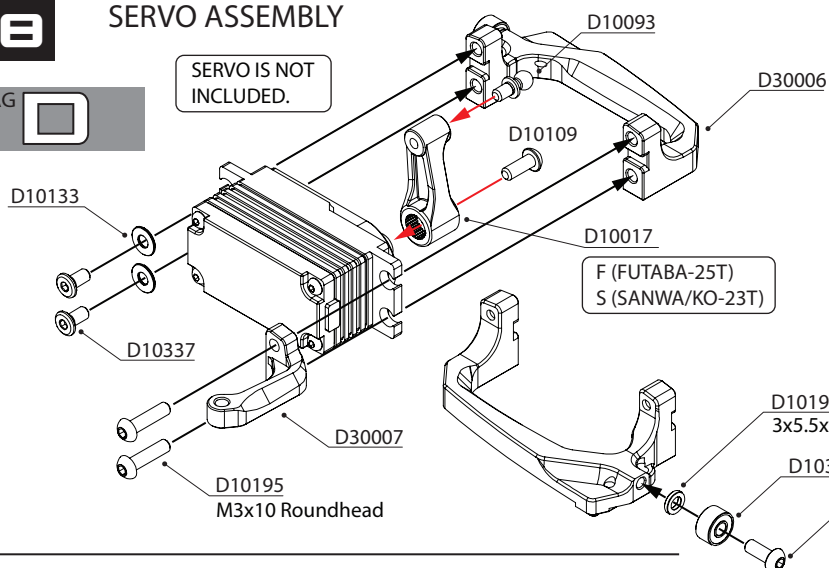
D10084 5mm Aluminum Wheel Hub, 2 pcs
D10098 O-Ring for Drive Shaft, 10 pcs
D10107 M3x4 Roundhead Screw, 10 pcs
D10128 6x10x3 Ball Bearing (Rubber Seal)
D10197 3x5.5x2.0mm Aluminum Spacer (Black), 10 pcs
D10294 Aluminum Steering Block
D10295 Aluminum Steering Plate (0)
D10296 Aluminum Steering Plate (+3)
D10304 3x5.5x3.5mm Aluminum Spacer (Black), 10 pcs

D10315 6x11x4 Ball Bearing (Rubber Seal)
D10337 M3x6 ULP head Screw, 10 pcs
D10339 M2x6 Roundhead Screw, 10 pcs
D10389 M3x15.8mm Ballstud, Steel, 4 pcs
D10390 Spring Steel Double Joint Drive Shaft Set (B), Front
D10391 Drive Shaft Pin, 2 pcs
D10392 Drive Shaft E-Clip, 10 pcs
D10393 Drive Shaft Steel Bushing, 4 pcs
DF10022 Rear Axle

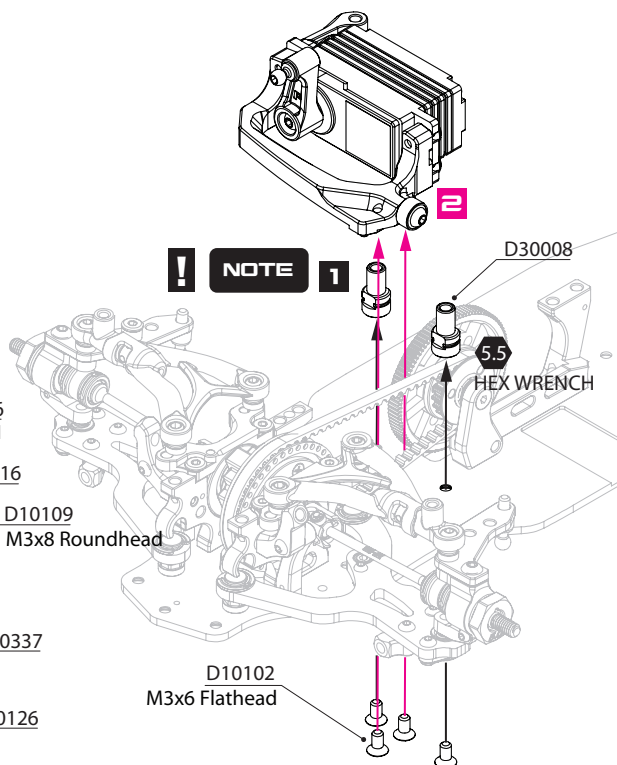
18 SERVO ASSEMBLY

BAG 

SERVO IS NOT INCLUDED.



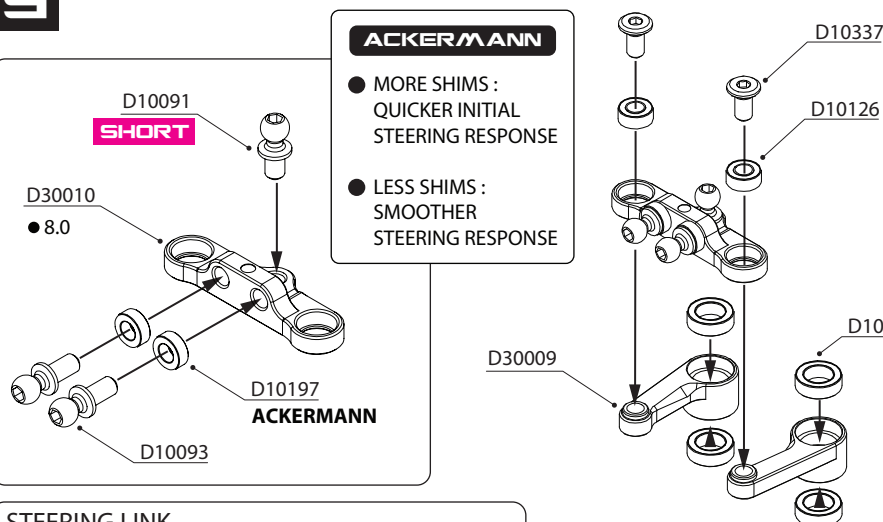
NOTE 1



19 STEERING ASSEMBLY

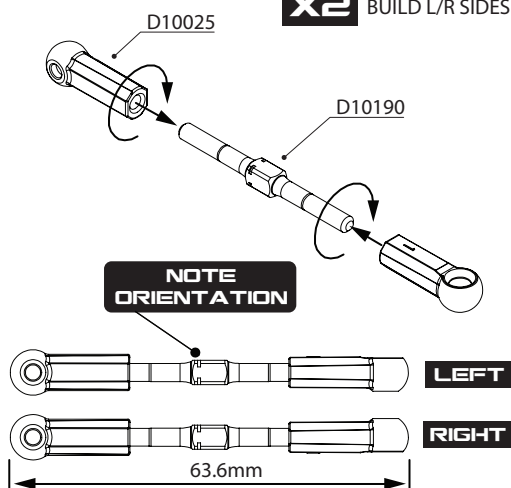
ACKERMANN

- MORE SHIMS : QUICKER INITIAL STEERING RESPONSE
- LESS SHIMS : SMOOTHER STEERING RESPONSE



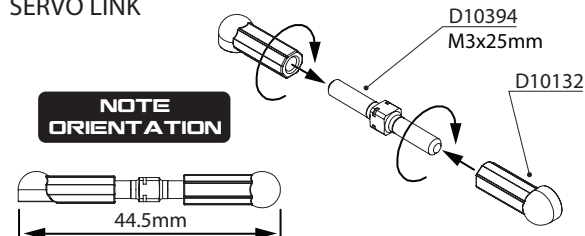
STEERING LINK

X2 BUILD L/R SIDES



SERVO LINK

NOTE ORIENTATION

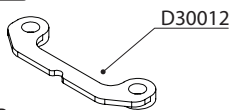


- D10017 Plastic Servo Horn Set
- D10025 Plastic Ball Cups (4.3x16mm), 10 pcs
- D10091 Aluminum 4.3x10.8 Ballstud
- D10093 Aluminum 4.3x11.8 Ballstud
- D10132 Plastic Ball Cups (4.3x13mm), 4 pcs
- D10133 3mm Spacer (Steel), 10 pcs
- D10190 M3x39mm Turnbuckle, Aluminum, Black, 2 pcs
- D10196 3x5.5x1.0mm Aluminum Spacer (Black), 10 pcs
- D10197 3x5.5x2.0mm Aluminum Spacer (Black), 10 pcs

- D10262 5x8x2.5 Ball Bearing, 2 pcs
- D10316 3x8x4 Ball Bearing, 2 pcs
- D10337 M3x6 ULP head Screw, 10 pcs
- D10394 M3x25mm Turnbuckle, Aluminum, Black
- D30006 Aluminum Floating Servo Mount
- D30008 Aluminum Bellcrank Post, 2 pcs
- D30009 Aluminum Bellcrank, 2 pcs
- D30010 Aluminum Steering Center Plate with Bearings (**8.5)

KIT INCLUDED

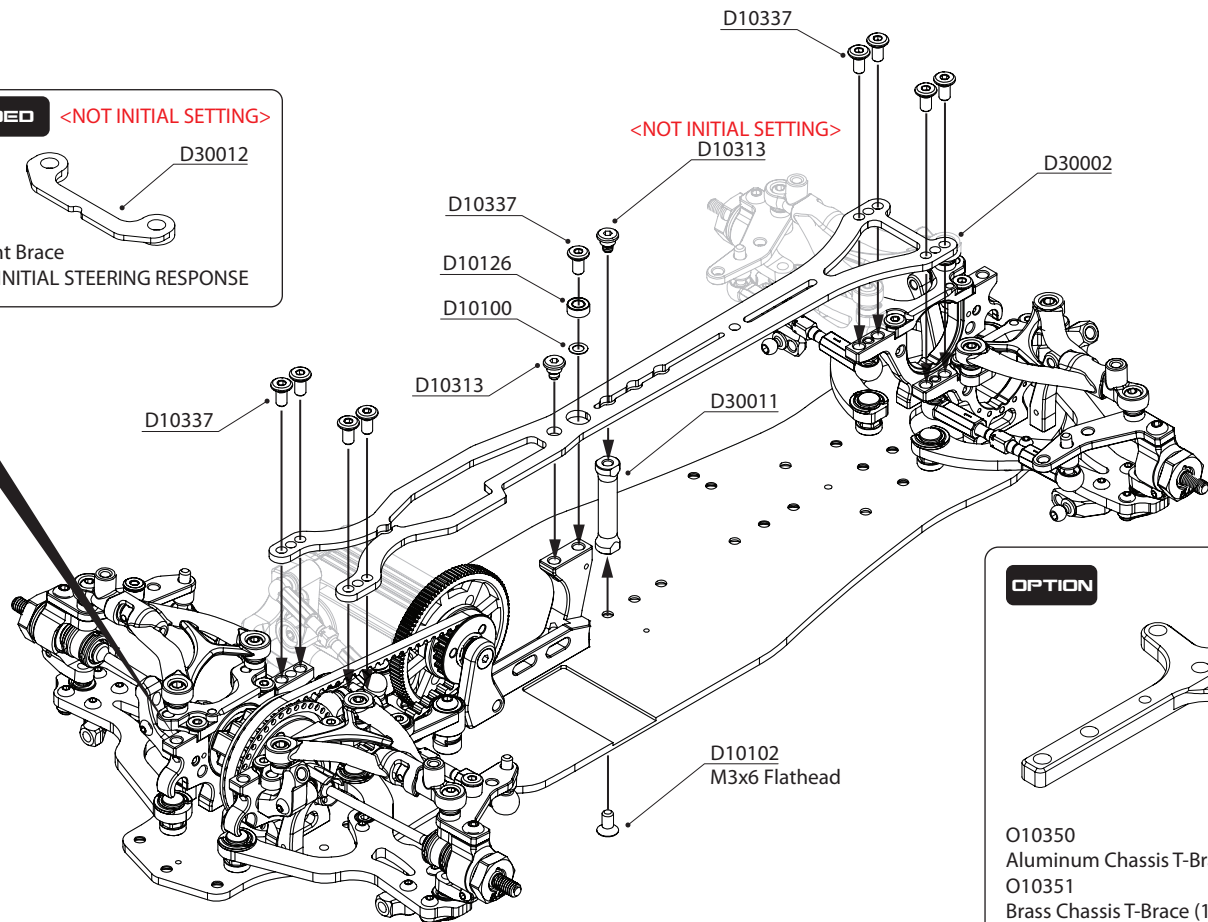
<NOT INITIAL SETTING>



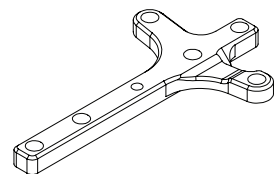
Graphite Front Brace

● INCREASE INITIAL STEERING RESPONSE

<NOT INITIAL SETTING>



OPTION



O10350

Aluminum Chassis T-Brace

O10351

Brass Chassis T-Brace (10g)

● CHASSIS T-BRACE PROVIDES MORE CHASSIS FLEX ADJUSTMENT.

UPPER DECK FLEX SETTING

CHASSIS FLEX SETTING ACCORDING TO SCREWS WITH UPPER DECK POST POSITION.

NO SCREW

SOFTTEST

<INITIAL SETTING>

1

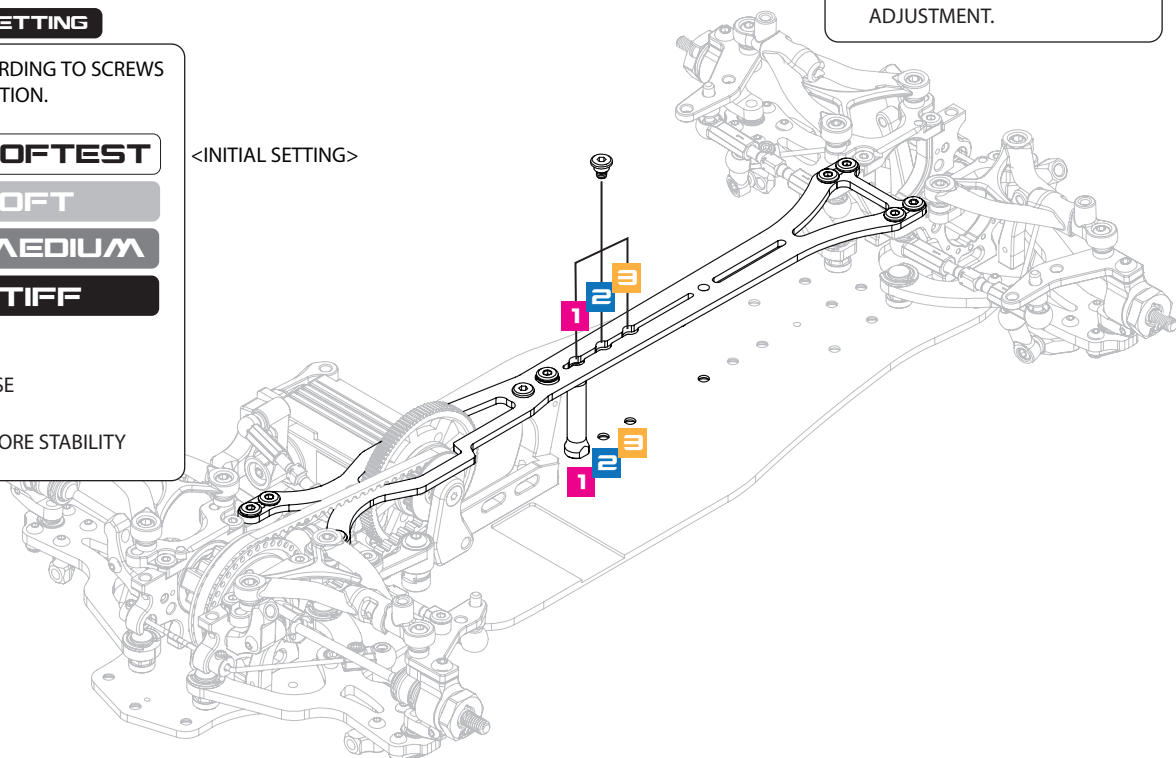
SOFT

1 + 2

MEDIUM

1 + 2 + 3

STIFF

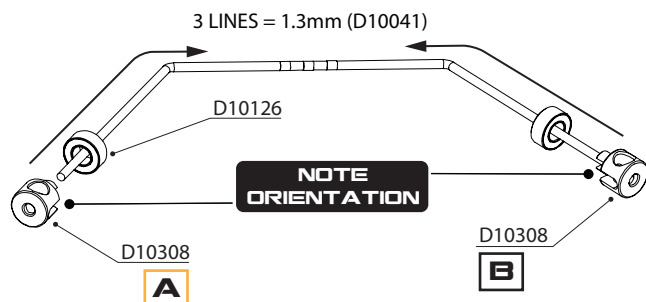
● SOFT SETTING:
MORE STEERING RESPONSE● STIFF SETTING:
MORE REAR TRACTION, MORE STABILITY

D10100 M3 Shim Set (0.1/0.2/0.3mm)
 D10126 3x6x2.5 Ball Bearing
 D10278 Graphite Upper Deck (2.0mm)

D10313 Aluminum Upper Deck Screw
 D10321 Graphite Front Brace
 D10337 M3x6 ULP head Screw, 10 pcs

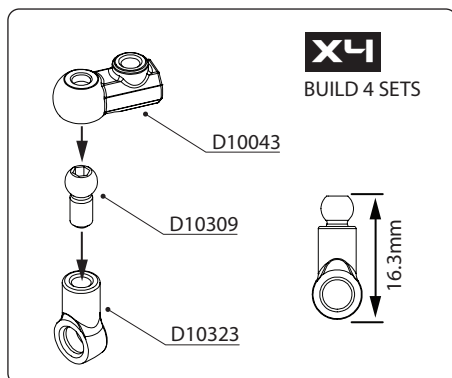
21

FRONT ANTI-ROLL BAR ASSEMBLY



D10131
M3X3mm

D10113
M3X4mm



FRONT ANTI-ROLL BAR

1.3 MORE CHASSIS ROLL,
INCREASE FRONT TRACTION.

1.4 LESS CHASSIS ROLL,
DECREASE FRONT TRACTION.

ASSEMBLED

22

REAR ANTI-ROLL BAR ASSEMBLY

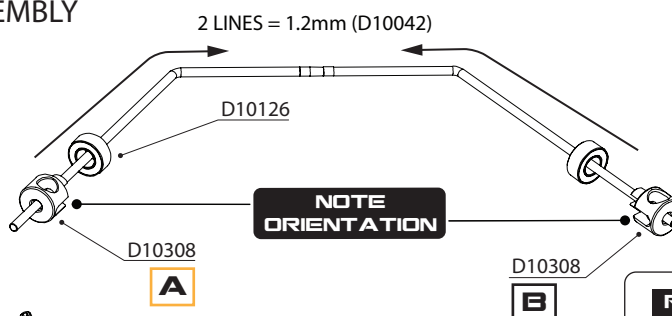
REAR ANTI-ROLL POSITION CHANGEABLE.

OUTER

● SUITED FOR MED-HIGH
TRACTION SURFACE
<INITIAL SETTING>

INNER

● SUITED FOR LOW
TRACTION SURFACE



D10113
M3X4mm

D10131
M3X3mm

REAR ANTI-ROLL BAR

1.2 MORE CHASSIS ROLL,
INCREASE REAR TRACTION.

1.3 LESS CHASSIS ROLL,
DECREASE REAR TRACTION.

ASSEMBLED

- D10041 Anti-Roll Bar 1.3, Front
- D10042 Anti-Roll Bar 1.2, Rear
- D10043 Plastic Anti-Roll Bar Ball Joint, 4 pcs
- D10113 M3x4 Set Screw, 10 pcs
- D10126 3x6x2.5 Ball Bearing
- D10131 M3x3 Set Screw, 10 pcs

- D10308 Aluminum Anti-Roll Bar Bushing (A/B)
- D10309 Alum Anti-Roll Bar Ball, 4.3x8.5mm
- D10323 Roll Bar Short Ball Cup (4.3x9mm)

OPTION

- O10145 Anti-Roll Bar 1.4, Front
- O10146 Anti-Roll Bar 1.3, Rear

BAG

**X4** BUILD 4 SETS SHOCKS**!** O-RING INSERT INTO THE GROOVE

4 HOLES
<INITIAL SETTING>
D10050

D10099

D10251

OIL

D10053

D10251

OPTION

O10144
Titanium Coated Shock Shaft

OIL

D10054

D10048

D10251

MOVE FREELY !

400 CST
SHOCK OIL

EXTEND THE SHOCK
SHAFT COMPLETELY.
FILL THE SHOCK OIL
INTO SHOCK BODY.

D10341

MOVE THE SHAFT UP
AND DOWN SLOWLY
TO REMOVE ALL AIR
BUBBLES.

WHEN INSTALLING OIL SEALER
CAP ONTO SHOCK BODY,
EXCESS OIL WILL LEAK OUT
FROM THE FILLED SHOCK
BODY.

SET SCREW SIZE IS SUBJECT
TO CHANGE BASED ON
SHOCK POSITION. **!**

D10251

D10341

TIGHTEN THE CAP AND
CLEAN OFF ANY EXCESS
OIL ON SHOCK.

O10058 (2.7 - FRONT)
D10056 (2.5 - REAR)

D10341

OPTION

O10140
Aluminum Shock Spring Retainer

OPTION**SHOCK
LENGTH**

52.5mm

D10114

SHORT
**THREAD
LOCK**

LONG

LONG

LONG

LONG

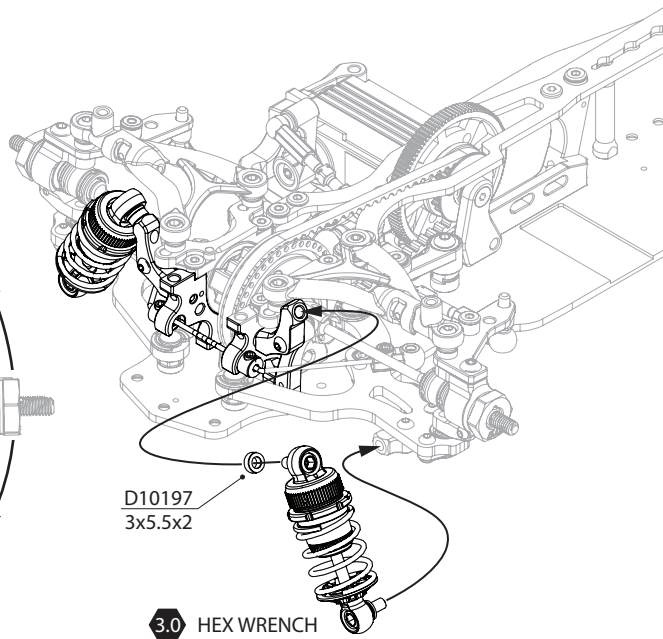
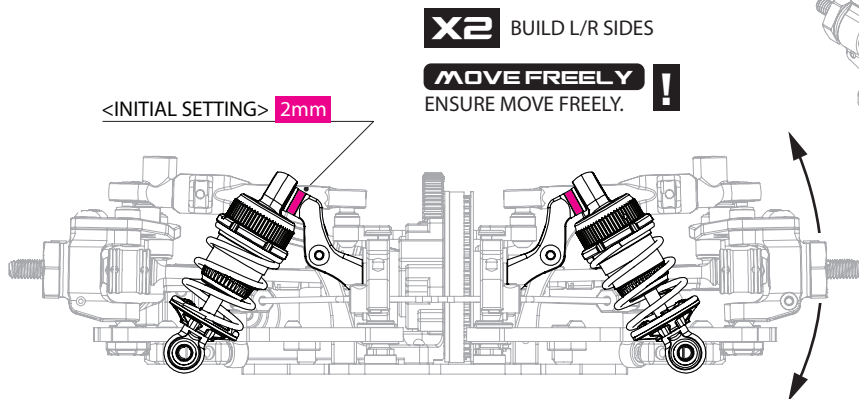
Part No.	Destiny Shock Springs (20mm)
D10056	Destiny Shock Spring (2.5), 20mm, Soft
D10057	Destiny Shock Spring (2.6), 20mm, Med.Soft
O10058	Destiny Shock Spring (2.7), 20mm, Medium

- D10048 Destiny Shock Maintenance Parts
- D10050 Destiny Shock Piston (4 holes), 4 pcs
- D10051 Destiny Shock Aluminum Ball (5.8mm), 8pcs
- D10052 Destiny Shock Shaft, 2 pcs
- D10053 O-Ring (13x1mm), 5 pcs
- D10054 Silicone O-Ring (Shock Shaft), 8 pcs
- D10099 M2 E-Clip, 10 pcs

- D10114 M3x8 Set Screw, 10 pcs
- D10251 Destiny Short Shock Body Set, 1 pair
- D10305 Destiny Shock Aluminum Ball (5.8mm), Long, 4pcs
- D10341 Destiny Shock Plastic Parts Set (V2)
- D10342 Destiny Shock Absorber Membrane (V2), 4 pcs
- D10343 Destiny Short Shock Set (V2), 4 pcs

24

FRONT SHOCK ASSEMBLY



SHOCK POSITION

SHOCK POSITION ADJUSTED BY DIFFERENT SIZE OF SHIM.

FRONT

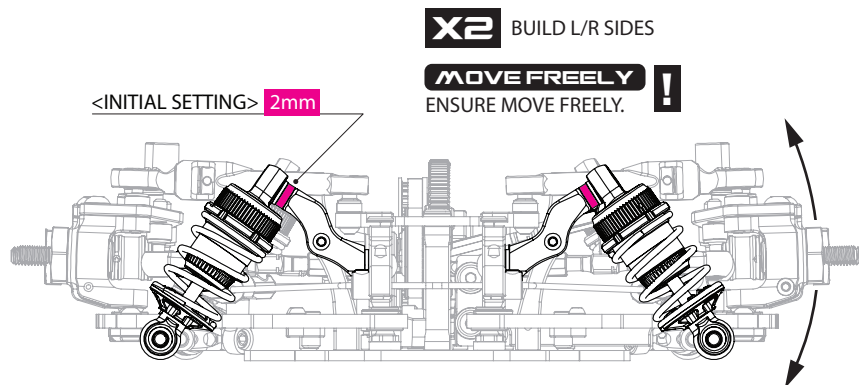
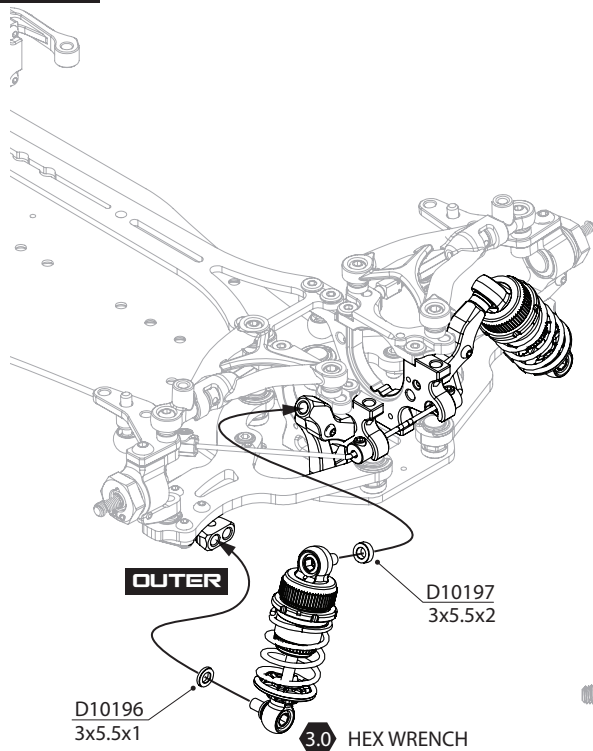
- MORE SHIM : MORE ENTRY CORNER STEERING.
- LESS SHIM : LESS ENTRY STEERING, MORE MID-CORNER STEERING.

REAR

- MORE SHIM : MORE REAR TRACTION.
- LESS SHIM : BETTER CORNERING SPEED AND CAR ROTATION.

25

REAR SHOCK ASSEMBLY



D10196 3x5.5x1.0mm Aluminum Spacer (Black), 10 pcs

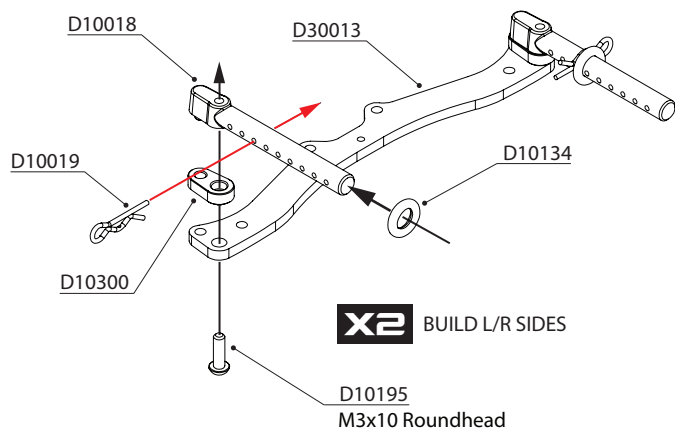
D10197 3x5.5x2.0mm Aluminum Spacer (Black), 10 pcs

REAR

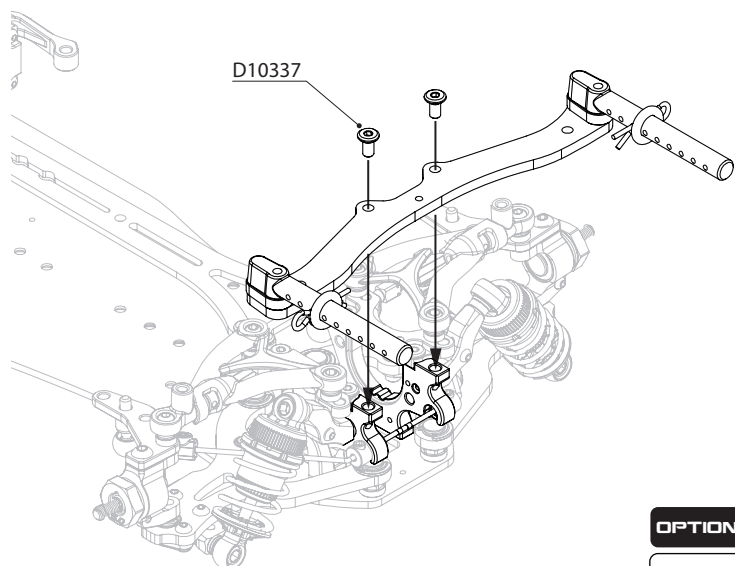
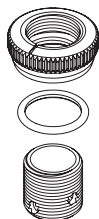
BAG

F

FRONT & REAR BODY CUSIONS

X4 INSTALL TO FRONT & REAR BODY POSTS**X2** BUILD L/R SIDES

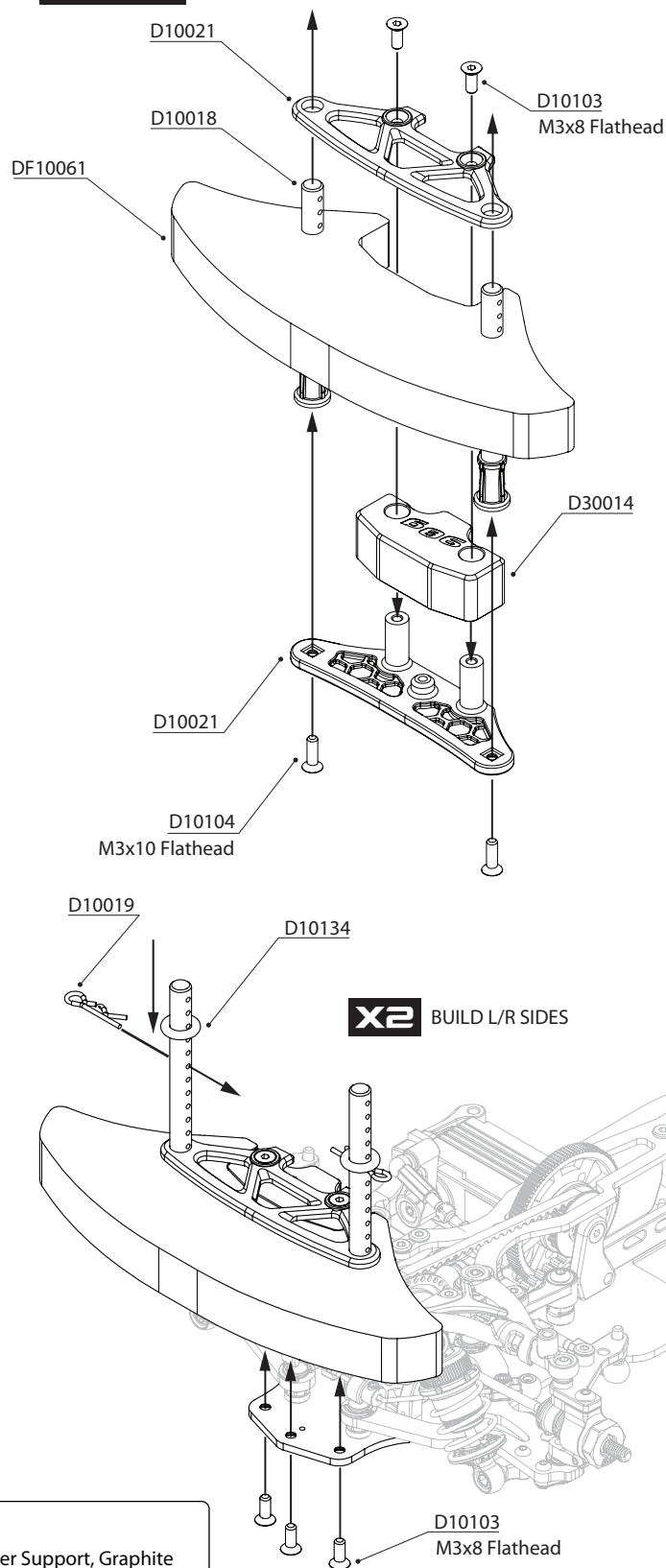
OPTION

RADTEC#BA-10005
Alum Body Height Fine
Adjuster Set, BLACK#BA-10002
Alum Body Height Fine
Adjuster Set, GREY

OPTION

O10135
Front Bumper Support, Graphite

FRONT

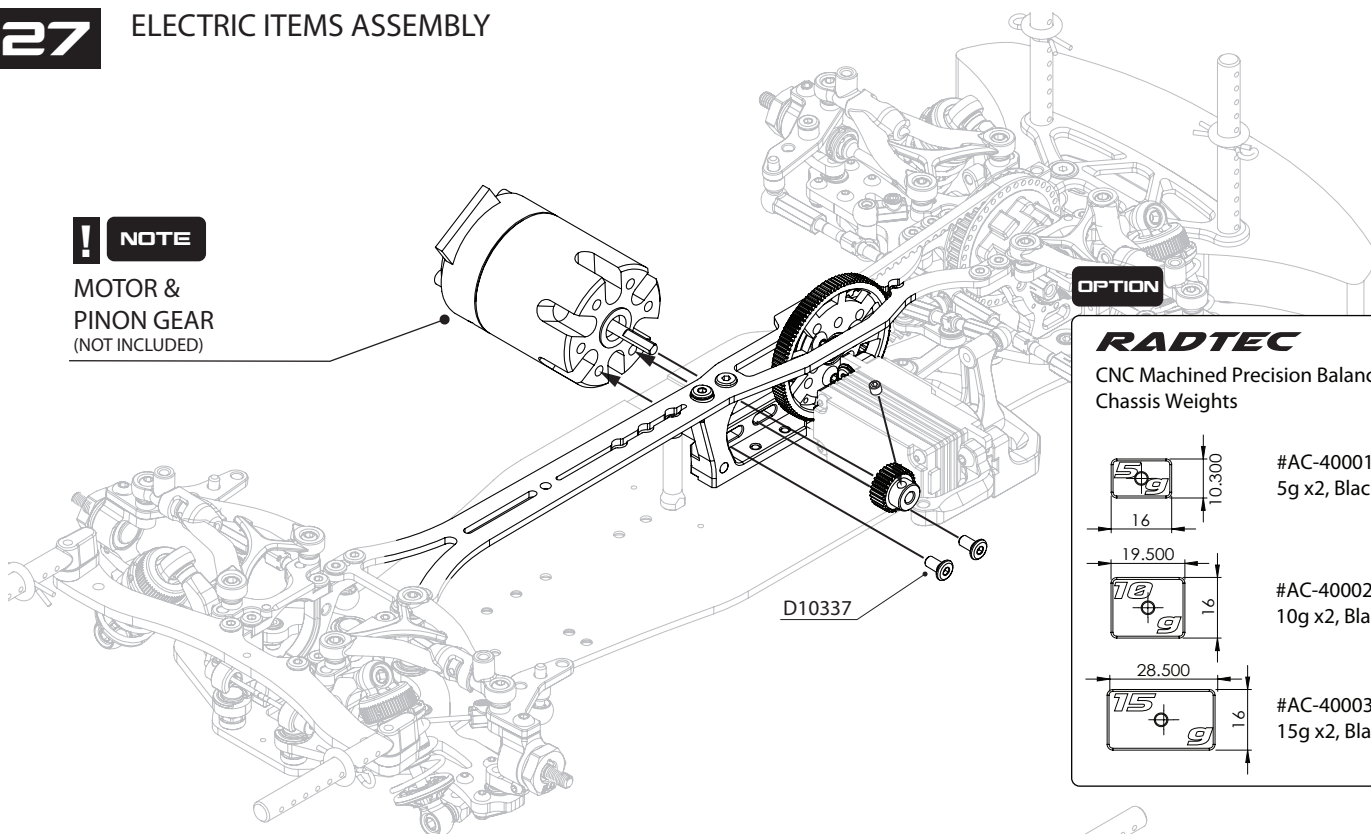
**X2** BUILD L/R SIDES

D10018 Plastic Front and Rear Body Post Set
 D10019 Body Clips
 D10021 Plastic Bumper Set
 D10103 M3x8 Flathead Screw
 D10104 M3x10 Flathead Screw

D10134 Body Cusions, 10 pcs
 D10300 Aluminum Rear Body Post Extension Mount
 D10337 M3x6 ULP head Screw, 10 pcs
 D30013 Graphite Rear Body Post Mount
 DF10061 Urethane Foam Bumper (Large)

! NOTE

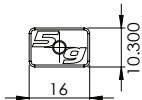
MOTOR &
PINON GEAR
(NOT INCLUDED)



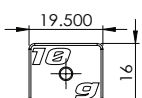
OPTION

RADTEC

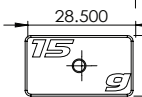
CNC Machined Precision Balancing
Chassis Weights



#AC-40001K
5g x2, Black



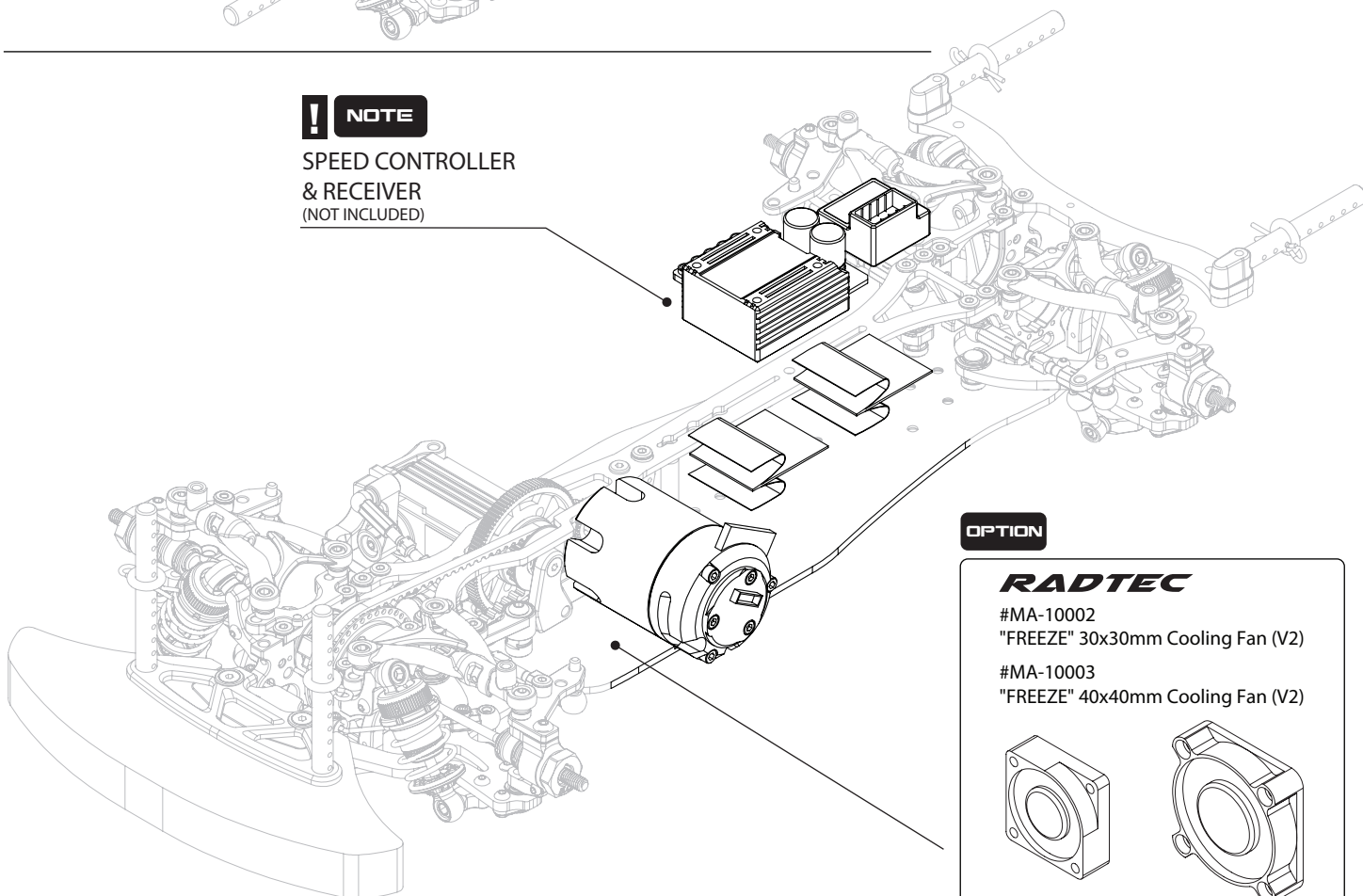
#AC-40002K
10g x2, Black



#AC-40003K
15g x2, Black

! NOTE

SPEED CONTROLLER
& RECEIVER
(NOT INCLUDED)

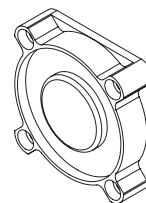
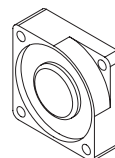


OPTION

RADTEC

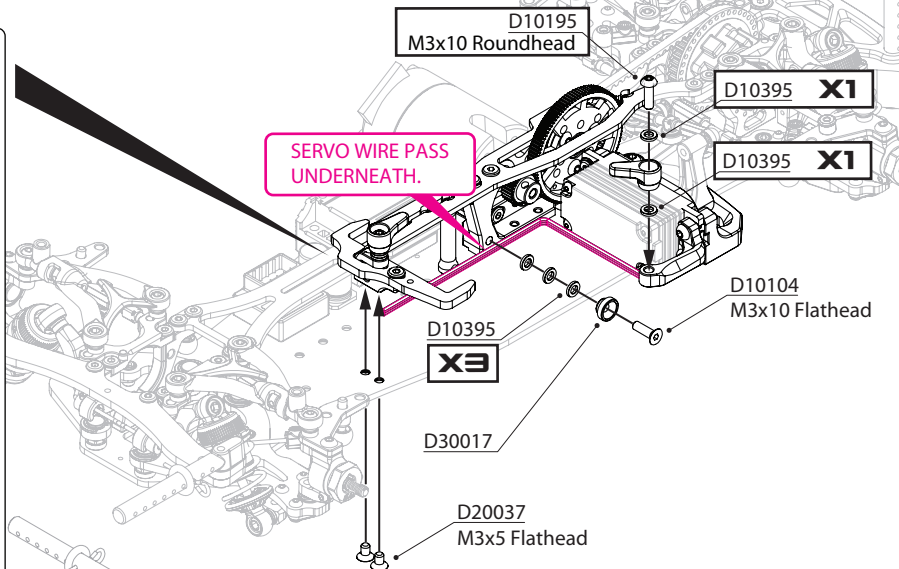
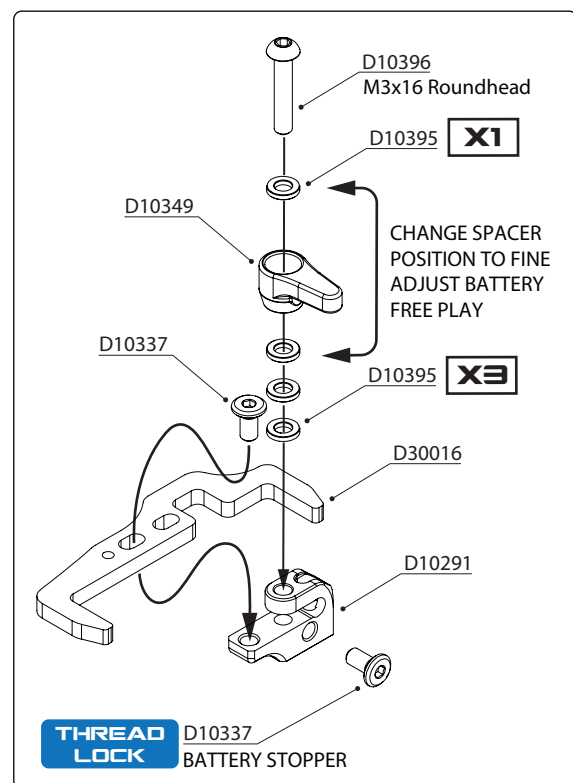
#MA-10002
"FREEZE" 30x30mm Cooling Fan (V2)

#MA-10003
"FREEZE" 40x40mm Cooling Fan (V2)



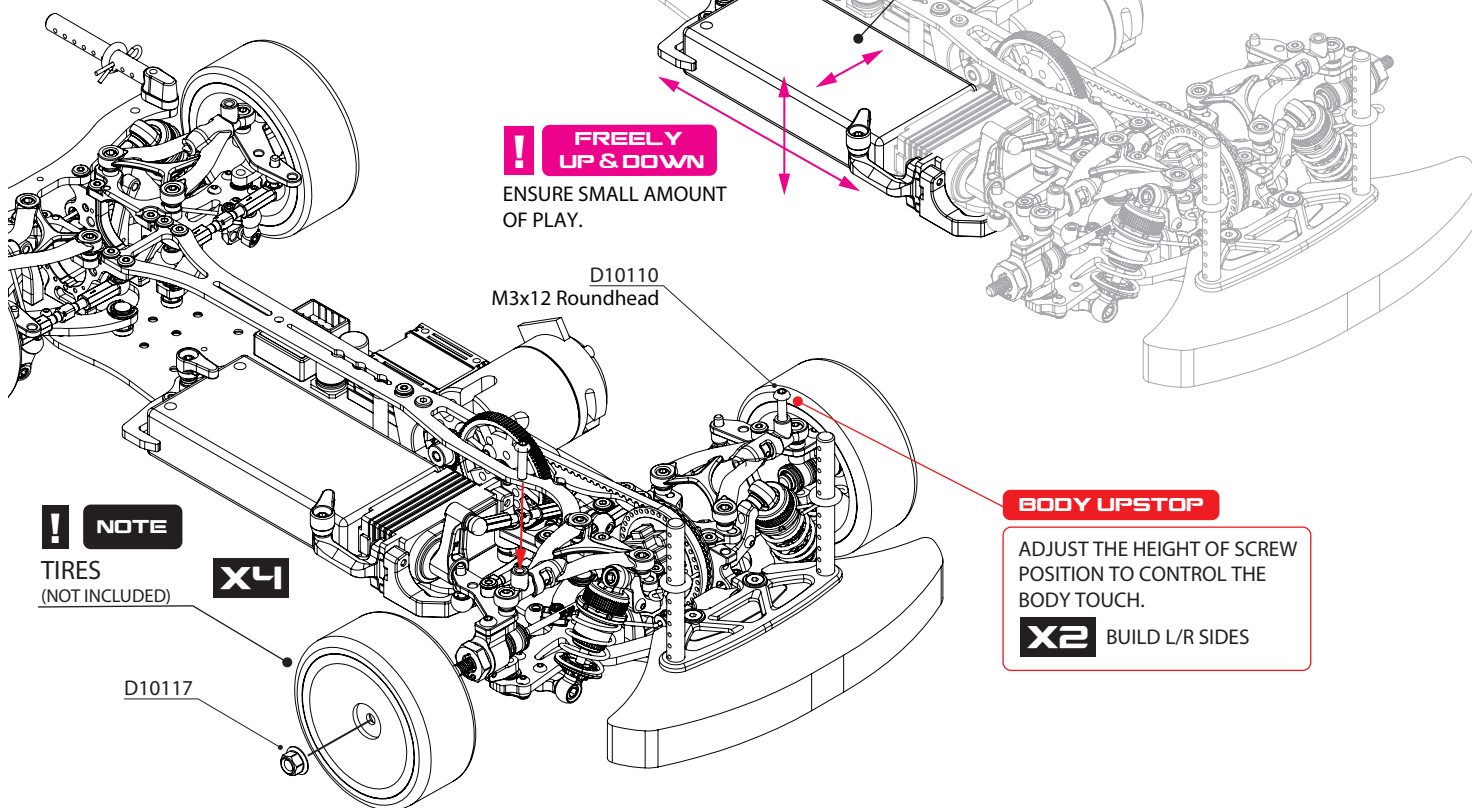
D10337 M3x6 ULP head Screw, 10 pcs

28 BATTERY AND TIRES ASSEMBLY



NOTE

BATTERY (NOT INCLUDED)
RECOMMEND TO USE LOW PROFILE
SHORTY BATTERY.



D10102 M3x6 Flathead Screw, 10 pcs
D10117 4mm Flanged Nut, 4 pcs
D10291 Aluminum Battery Bracket
D10395 M3x5.5x1mm Delrin Spacers, 10 pcs
D10396 M3x16 Roundhead Screw, 10 pcs

D10337 M3x6 ULP head Screw, 10 pcs
D10349 Battery Backstop
D20037 M3x5 Flathead Screw, 10 pcs
D30016 Graphite Battery Holder Set (A & B)
D30017 Battery Stopper Set

DATE / /

DRIVER NAME

TRACK

CONDITION ☐ CARPET ☐ ASPHALT

TRACTION ☐ HIGH ☐ ☐ ☐ ☐ LOW

TEMP °C AIR TRACK

EVENT BEST LAP TIME QUALIFYING POSITION FINAL POSITION

FRONT

UPPER ARM SPACER /mm (FF) /mm (FR)

SHOCK SPACER /mm

BODY UPSTOP /mm

SPACER /mm

STEERING PLATE ☐ 0 ☐ +3

ROLL-CENTER SPACER /mm (FF) /mm (FR)

SHOCK SPACER /mm

TRACK WIDTH 0mm +1mm

FRONT DIFF ☐ DIFF # /CST

WHEEL HUB ☐ 4.0mm ☐ 5.0mm

WHEEL SPACER /mm

ACKERMANN SPACER /mm

CENTER PLATE ☐ (8.0) ☐ (8.5)

STEERING SPACER /mm

RIDE HEIGHT /mm

CAMBER °

CASTER ☐ 4° ☐ 5°

SWAY BAR ☐ 1.3 ☐ 1.4

TOE ANGLE °

SHOCK ABSORBER

OIL /CST

LENGTH /mm

REBOUND %

SPRING ☐ 2.5 ☐ 2.6 ☐ 2.7

OTHERS

ABSORBER MEMBRANCE

PISTON ☐ 3 HOLES ☐ 4 HOLES

REAR

UPPER ARM SPACER /mm (RF) /mm (RR)

SHOCK SPACER /mm

SPACER /mm

STEERING PLATE ☐ 0 ☐ +3

ROLL-CENTER SPACER /mm (FF) /mm (FR)

SHOCK SPACER /mm

TRACK WIDTH 0mm +1mm

WHEEL HUB ☐ 4.0mm ☐ 5.0mm

WHEEL SPACER /mm

ANTI-ROLL BAR POSITION ☐ INNER ☐ OUTER

REAR LINK POSITION

RIDE HEIGHT /mm

CAMBER °

CASTER ☐ 5° ☐ 4°

SWAY BAR ☐ 1.2 ☐ 1.3

TOE ANGLE °

SHOCK ABSORBER

OIL /CST

LENGTH /mm

REBOUND %

SPRING スプリング ☐ 2.5 ☐ 2.6 ☐ 2.7

OTHERS

ABSORBER MEMBRANCE

PISTON ☐ 3 HOLES ☐ 4 HOLES

FRONT BRACE D30012

WEIGHT BALANCE g

MAIN CHASSIS ☐ GRAPHITE ☐ ALUM (FLEX)

MULTI-FLEX CHASSIS

WEIGHT BALANCE g

CHASSIS T-BRACE ☐ ALUM ☐ BRASS (10g)

WEIGHT BALANCE g

FRONT BUMPER WEIGHT D30014

FRONT BRACE O10286

FRONT DIFF WEIGHT O30015

TRACK WIDTH FRONT /mm

REAR /mm

SERVO HORN

SPACER /mm

25

25

KIT ALUM

UPPER DECK

KIT (SINGLE PIECE)

1.6mm 2.0mm

TIRE SETTING

FRONT	REAR
TIRE	TIRE
INSERT	INSERT
WHEEL	WHEEL
ADDITIVE	ADDITIVE
ADDITIVE TIME /MINS	ADDITIVE TIME /MINS

MOTOR TURNS

PINON GEAR T SPUR GEAR T

ROTOR /mm

MOTOR TIMING °

FINAL RATIO

ESC SETUP

BATTERY ☐ SHORTY BODY

TOTAL WEIGHT /g

NOTE



<http://www.destinyracing.jp>