

Assembly Instruction

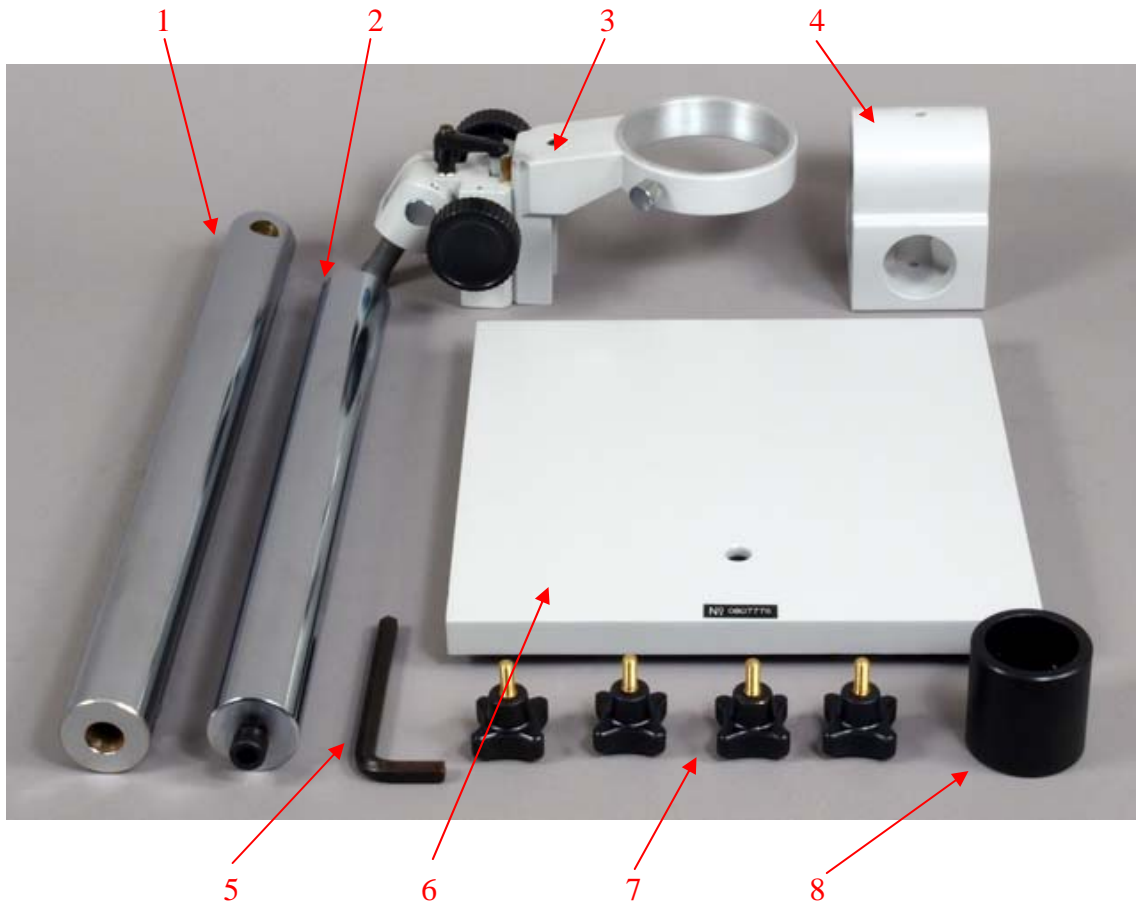
Boom Stand  
For Stereo Microscope

Model A501



[MicroscopeNet.com](http://MicroscopeNet.com)

# 1. Parts identification



- 1. Horizontal Bar
- 2. Vertical Post
- 3. Focusing Block
- 4. Adapter
- 5. Allen Key
- 6. Boom Stand Base
- 7. Locking Knobs
- 8. Support Collar

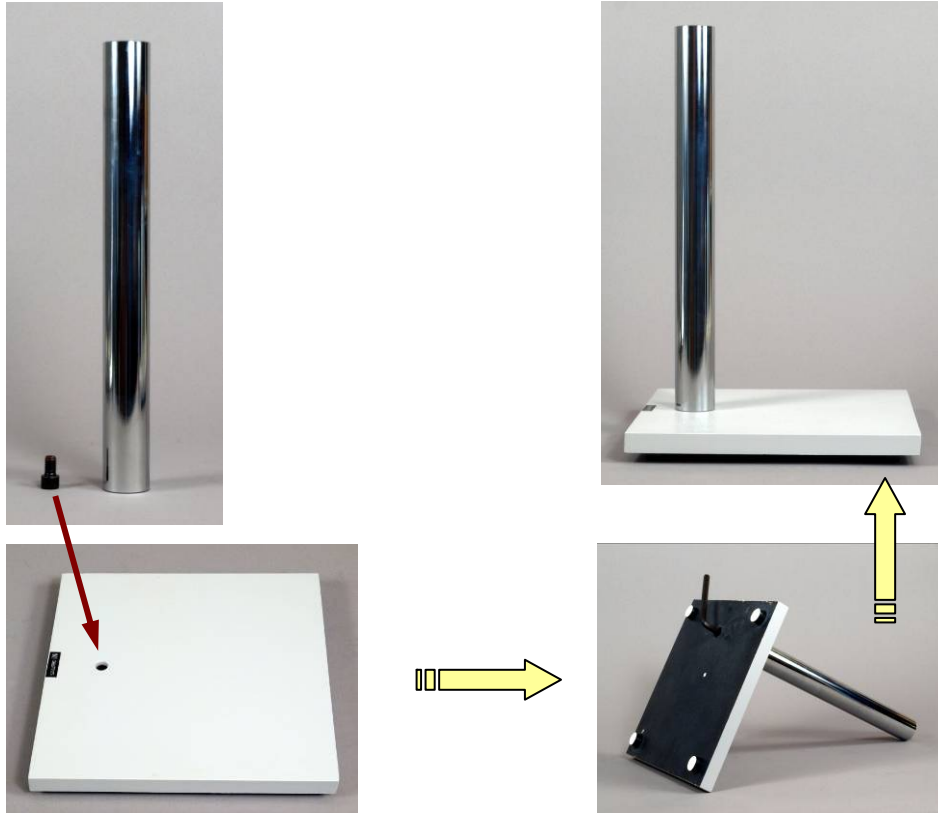
# 2. Assembly instructions

1) Put the boom stand base on a firm and sturdy table or level surface.



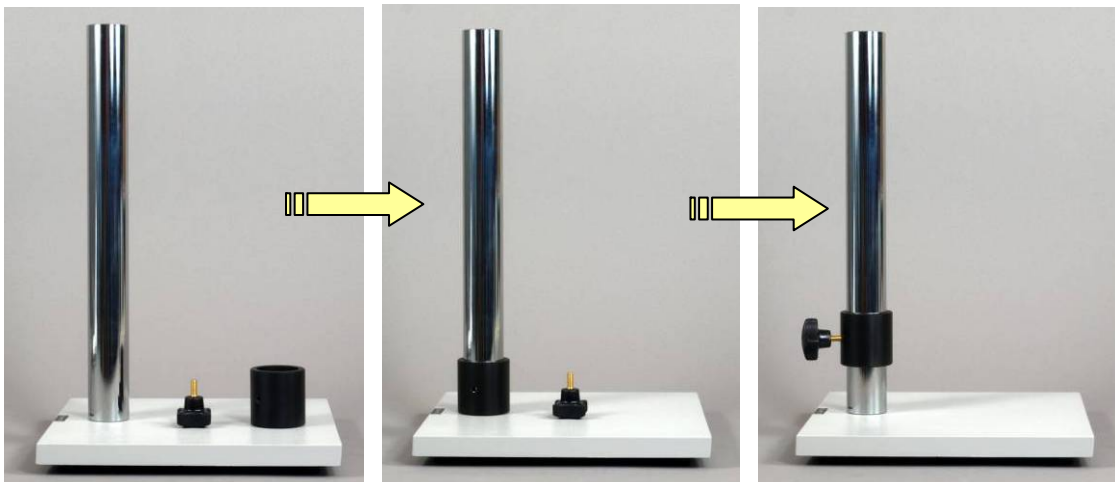
## 2) Mount vertical post onto boom stand base

- (1) Take off the screw at the bottom end of vertical post.
- (2) Insert the post screw into the hole on the base from underneath.
- (3) Tighten the screw with the Allen key as shown in the picture.



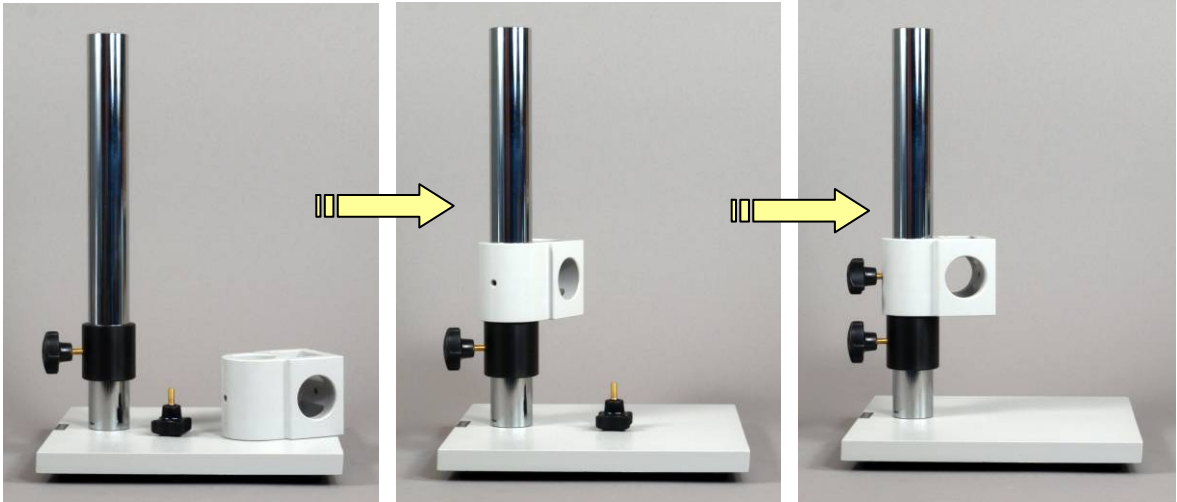
## 3) Mount support collar onto the post

- (1) Slide the support collar over the vertical post.
- (2) Install and tighten the locking knob.



#### 4) Mount the adapter block

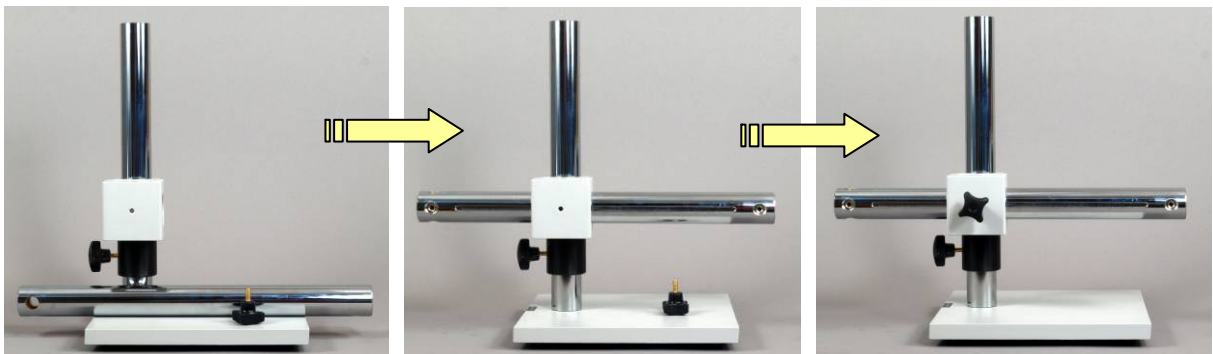
- (1) Slide the adapter block over the vertical post, till touches the support collar.
- (2) Install and tighten the locking knob.



#### 5) Mount the horizontal bar

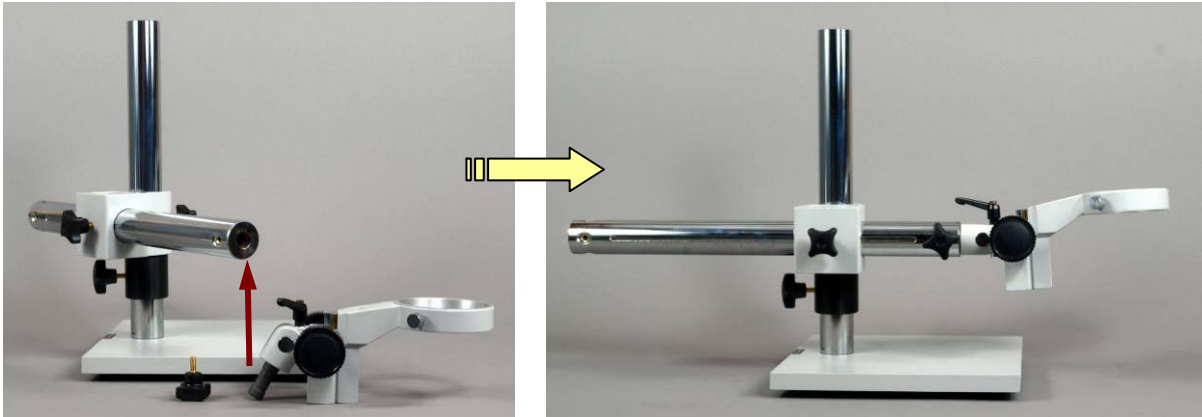
- (1) Insert the horizontal bar into the adapter block. Make sure the long flat on the bar align to the locking knob screw hole.
- (2) Install and tighten the locking knob

**Note:** The mounting holes on each end of the horizontal bar are different. It depends on how you would like to install the focusing block to put which end on right side and which on left side.



6) Mount the focusing block onto the horizontal bar (the end with axial hole)

- (1) Insert the shaft of focusing block into the axial hole on the end of horizontal bar.
- (2) Install and tighten the locking knob.



7) Mount focusing block onto the horizontal bar (the end with lateral hole)

- (1) Insert the shaft of focusing block into the lateral hole on the other end of horizontal bar.
- (2) Install and tighten the locking knob.

