

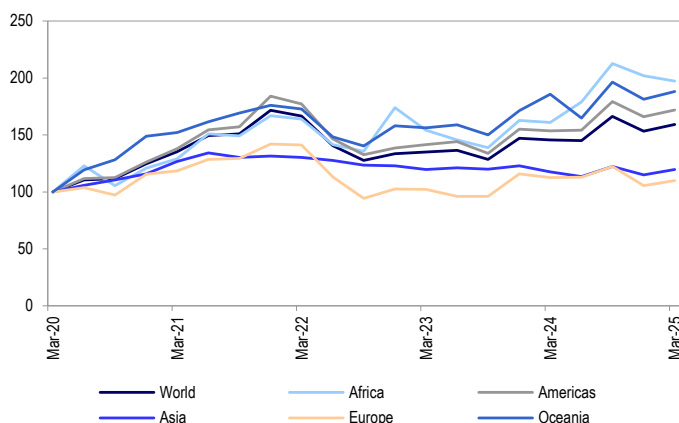
GPR 250 REIT World Index

Free Float Market Cap \$1,309,329 million

Constituents 199

The GPR 250 REIT Index is a subset of the GPR 250 Index and covers all companies having a REIT-like structure. The GPR 250 REIT Index is a daily calculated index based on free float market capitalisations, and incepted December 1989. All figures are based on the GPR 250 REIT Index in local currency.

Total Return	World	Africa	Americas	Asia	Europe	Oceania
Q1	3.7%	-2.4%	3.6%	4.1%	4.1%	3.7%
YTD	4.5%	-2.7%	4.6%	4.0%	4.9%	2.1%
-1Y	9.3%	22.5%	12.0%	1.6%	-2.4%	1.2%
-3Y	-4.5%	20.3%	-3.1%	-8.3%	-22.3%	8.8%
Weight	100.0%	0.3%	78.6%	10.2%	7.1%	3.8%
Dividend yield	4.33%	9.50%	4.02%	5.35%	5.40%	5.37%
Volatility	16.55%	21.18%	19.92%	10.64%	23.11%	19.35%



WORLD

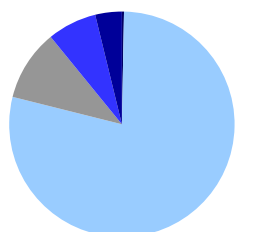
Top 5 and bottom 5 Performers

Company	Country	Continent	Currency	REIT	Sector	Free Float		Total Return				Dividend		Weight
						Market Cap	Q1	YTD	-1Y	-3Y	Yield	Volatility		
Medical Properties Trust	USA	AME	USD	Y	HCR	\$3,150	59.0%	59.0%	79.4%	-30.4%	8.96%	58.45%	0.24%	
Assura PLC	GBR	EUR	GBP	Y	HCR	\$1,789	28.2%	28.2%	39.9%	29.3%	7.27%	26.92%	0.14%	
Urban Logistics REIT Plc	GBR	EUR	GBP	Y	IND	\$777	27.0%	27.0%	38.9%	17.3%	5.85%	30.99%	0.06%	
EPR Properties	USA	AME	USD	Y	OTH	\$3,957	25.2%	25.2%	54.2%	89.3%	6.52%	25.56%	0.30%	
Fibra Uno Administracio SA	MEX	AME	MXN	Y	DIV	\$3,314	24.2%	24.2%	11.4%	138.1%	8.36%	29.94%	0.25%	
SITE Centers Corporation	USA	AME	USD	Y	RET	\$617	-16.0%	-16.0%	15.4%	32.5%	0.79%	37.87%	0.05%	
Digital Realty Trust	USA	AME	USD	Y	IND	\$48,225	-17.2%	-17.2%	9.0%	41.6%	3.41%	31.59%	3.68%	
RLJ Lodging Trust	USA	AME	USD	Y	HOT	\$1,167	-18.6%	-18.6%	-21.6%	-22.8%	6.97%	31.34%	0.09%	
American Assets Trust Inc	USA	AME	USD	Y	DIV	\$989	-19.6%	-19.6%	8.7%	-12.3%	6.68%	29.98%	0.08%	
Empire State Realty Trust Inc	USA	AME	USD	Y	OFF	\$1,066	-23.2%	-23.2%	-19.4%	-7.1%	1.79%	35.70%	0.08%	

Top 10 by Free Float Market Cap

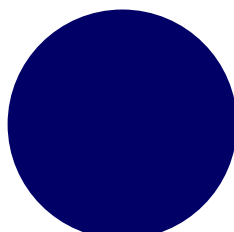
Company	Country	Continent	Currency	REIT	Sector	Free Float		Total Return				Dividend		Weight
						Market Cap	Q1	YTD	-1Y	-3Y	Yield	Volatility		
1 Prologis Inc	USA	AME	USD	Y	IND	\$103,328	8.6%	8.6%	-5.0%	-9.5%	3.48%	28.76%	7.89%	
2 Welltower OP Inc	USA	AME	USD	Y	HCR	\$98,217	23.2%	23.2%	74.8%	103.5%	1.71%	24.06%	7.50%	
3 Simon Property Group Inc.	USA	AME	USD	Y	RET	\$53,612	0.2%	0.2%	23.2%	112.3%	4.97%	26.32%	4.09%	
4 Realty Income Corp.	USA	AME	USD	Y	RET	\$51,679	13.4%	13.4%	25.0%	32.6%	4.99%	20.08%	3.95%	
5 Digital Realty Trust	USA	AME	USD	Y	IND	\$48,225	-17.2%	-17.2%	9.0%	41.6%	3.41%	31.59%	3.68%	
6 Public Storage Inc.	USA	AME	USD	Y	IND	\$47,175	3.1%	3.1%	15.9%	20.5%	4.01%	25.50%	3.60%	
7 VICI Properties	USA	AME	USD	Y	OTH	\$34,396	16.3%	16.3%	29.3%	84.0%	5.25%	21.66%	2.63%	
8 Extra Space Storage	USA	AME	USD	Y	IND	\$31,119	2.6%	2.6%	14.2%	4.2%	4.36%	30.49%	2.38%	
9 AvalonBay Communities Inc.	USA	AME	USD	Y	RES	\$30,440	-0.1%	-0.1%	26.1%	17.2%	3.19%	23.10%	2.32%	
10 Ventas Inc.	USA	AME	USD	Y	HCR	\$29,951	19.3%	19.3%	71.8%	54.9%	2.66%	26.63%	2.29%	

Regional Breakdown



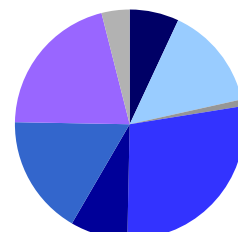
■ Africa 0.3%
■ Americas 78.6%
■ Asia 10.2%
■ Europe 7.1%
■ Oceania 3.8%

REIT vs. Non-REIT Breakdown



■ REIT 100.0%
■ Non-REIT 0.0%

Sector Breakdown



■ Diversified 6.9%
■ HealthCare 14.6%
■ Hotel 0.9%
■ Industrial 27.9%
■ Office 8.1%
■ Residential 16.9%
■ Retail 20.8%
■ Other 4.0%

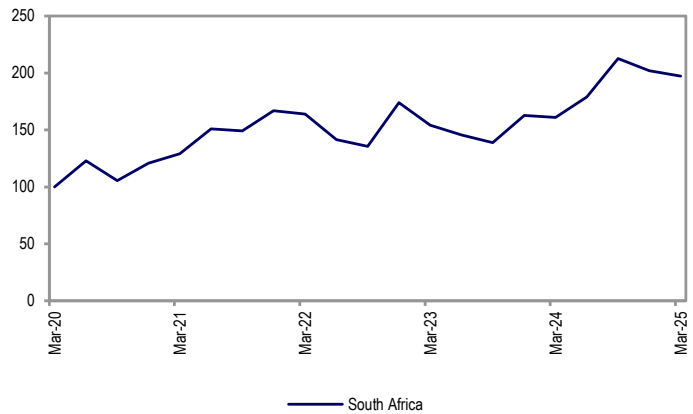
GPR 250 REIT Africa Index

Free Float Market Cap \$3,934 million
Constituents 2

The GPR 250 REIT Africa Index is a total return index that covers 2 property company in the continent Africa. The GPR 250 REIT Index is daily calculated index based on free float market capitalisations, and incepted March 2000.

All figures are based on the GPR 250 REIT Index in local currency.

Total Return	Africa	South Africa
Q1	-2.4%	-2.4%
YTD	-2.7%	-2.7%
-1Y	22.5%	22.5%
-3Y	20.3%	20.3%
Weight	100.0%	100.0%
Dividend yield	9.50%	9.50%
Volatility	21.18%	21.18%



AFRICA

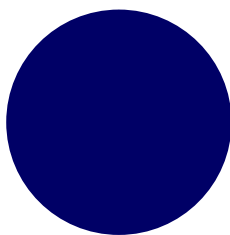
Top 5 and bottom 5 Performers

Company	Country	Continent	Currency	REIT	Sector	Free Float	Total Return				Dividend		Weight
						Market Cap	Q1	YTD	-1Y	-3Y	Yield	Volatility	
▲ Growthpoint Properties Ltd.	ZAF	AFR	ZAR	Y	DIV	\$2,369	1.7%	1.7%	52.9%	117.0%	9.04%	27.22%	60.21%
▲ Redefine Properties Limited	ZAF	AFR	ZAR	Y	DIV	\$1,566	-8.1%	-8.1%	43.5%	146.0%	10.17%	30.65%	39.79%

Top 10 by Free Float Market Cap

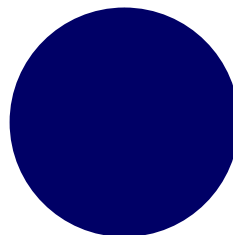
Company	Country	Continent	Currency	REIT	Sector	Free Float	Total Return				Dividend		Weight
						Market Cap	Q1	YTD	-1Y	-3Y	Yield	Volatility	
1 Growthpoint Properties Ltd.	ZAF	AFR	ZAR	Y	DIV	\$2,369	1.7%	1.7%	52.9%	117.0%	9.04%	27.22%	60.21%
2 Redefine Properties Limited	ZAF	AFR	ZAR	Y	DIV	\$1,566	-8.1%	-8.1%	43.5%	146.0%	10.17%	30.65%	39.79%

Regional Breakdown



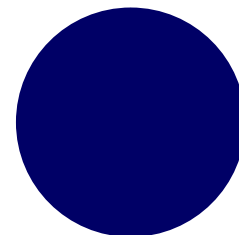
■ South Africa 100.0%

REIT vs. Non-REIT Breakdown



■ REIT 100.0% ■ Non-REIT 0.0%

Sector Breakdown



■ Diversified 100.0%

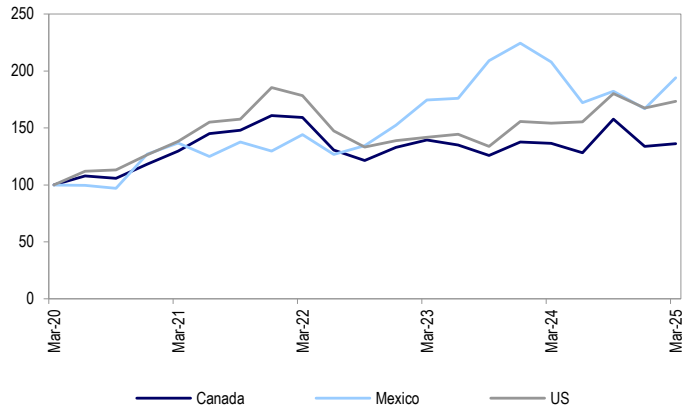
GPR 250 REIT Americas Index

Free Float Market Cap \$1,029,240 million

Constituents 100

The GPR 250 REIT Americas Index is a total return index that covers 100 property companies in the continent Americas. The GPR 250 REIT Index is daily calculated index based on free float market capitalisations, and inception December 1989. All figures are based on the GPR 250 REIT Index in local currency.

Total Return	Americas	Canada	Mexico	US
Q1	3.6%	1.8%	16.3%	3.5%
YTD	4.6%	3.2%	17.0%	4.6%
-1Y	12.0%	-0.3%	-6.7%	12.6%
-3Y	-3.1%	-14.6%	34.6%	-2.7%
Weight	100.0%	2.8%	0.6%	96.5%
Dividend yield	4.02%	5.46%	6.26%	3.96%
Volatility	19.92%	17.95%	26.49%	20.28%



AMERICAS

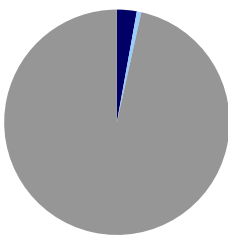
Top 5 and bottom 5 Performers

Company	Country	Continent	Currency	REIT	Sector	Free Float		Total Return				Dividend		Weight
						Market Cap	Q1	YTD	-1Y	-3Y	Yield	Volatility		
Medical Properties Trust	USA	AME	USD	Y	HCR	\$3,150	59.0%	59.0%	79.4%	-30.4%	8.96%	58.45%	0.31%	
EPR Properties	USA	AME	USD	Y	OTH	\$3,957	25.2%	25.2%	54.2%	89.3%	6.52%	25.56%	0.38%	
Fibra Uno Administracio SA	MEX	AME	MXN	Y	DIV	\$3,314	24.2%	24.2%	11.4%	138.1%	8.36%	29.94%	0.32%	
Global Net Lease Inc	USA	AME	USD	Y	DIV	\$1,571	23.8%	23.8%	60.6%	78.8%	13.68%	33.85%	0.15%	
Welltower OP Inc	USA	AME	USD	Y	HCR	\$98,217	23.2%	23.2%	74.8%	103.5%	1.71%	24.06%	9.54%	
SITE Centers Corporation	USA	AME	USD	Y	RET	\$617	-16.0%	-16.0%	15.4%	32.5%	0.79%	37.87%	0.06%	
Digital Realty Trust	USA	AME	USD	Y	IND	\$48,225	-17.2%	-17.2%	9.0%	41.6%	3.41%	31.59%	4.69%	
RLJ Lodging Trust	USA	AME	USD	Y	HOT	\$1,167	-18.6%	-18.6%	-21.6%	-22.8%	6.97%	31.34%	0.11%	
American Assets Trust Inc	USA	AME	USD	Y	DIV	\$989	-19.6%	-19.6%	8.7%	-12.3%	6.68%	29.98%	0.10%	
Empire State Realty Trust Inc	USA	AME	USD	Y	OFF	\$1,066	-23.2%	-23.2%	-19.4%	-7.1%	1.79%	35.70%	0.10%	

Top 10 by Free Float Market Cap

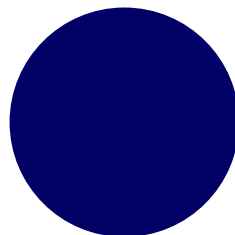
Company	Country	Continent	Currency	REIT	Sector	Free Float		Total Return				Dividend		Weight
						Market Cap	Q1	YTD	-1Y	-3Y	Yield	Volatility		
1 Prologis Inc	USA	AME	USD	Y	IND	\$103,328	8.6%	8.6%	-5.0%	-9.5%	3.48%	28.76%	10.04%	
2 Welltower OP Inc	USA	AME	USD	Y	HCR	\$98,217	23.2%	23.2%	74.8%	103.5%	1.71%	24.06%	9.54%	
3 Simon Property Group Inc.	USA	AME	USD	Y	RET	\$53,612	0.2%	0.2%	23.2%	112.3%	4.97%	26.32%	5.21%	
4 Realty Income Corp.	USA	AME	USD	Y	RET	\$51,679	13.4%	13.4%	25.0%	32.6%	4.99%	20.08%	5.02%	
5 Digital Realty Trust	USA	AME	USD	Y	IND	\$48,225	-17.2%	-17.2%	9.0%	41.6%	3.41%	31.59%	4.69%	
6 Public Storage Inc.	USA	AME	USD	Y	IND	\$47,175	3.1%	3.1%	15.9%	20.5%	4.01%	25.50%	4.58%	
7 VICI Properties	USA	AME	USD	Y	OTH	\$34,396	16.3%	16.3%	29.3%	84.0%	5.25%	21.66%	3.34%	
8 Extra Space Storage	USA	AME	USD	Y	IND	\$31,119	2.6%	2.6%	14.2%	4.2%	4.36%	30.49%	3.02%	
9 AvalonBay Communities Inc.	USA	AME	USD	Y	RES	\$30,440	-0.1%	-0.1%	26.1%	17.2%	3.19%	23.10%	2.96%	
10 Ventas Inc.	USA	AME	USD	Y	HCR	\$29,951	19.3%	19.3%	71.8%	54.9%	2.66%	26.63%	2.91%	

Regional Breakdown



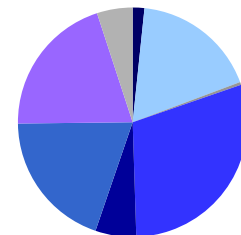
■ Canada 2.8% ■ Mexico 0.6%
■ US 96.5%

REIT vs. Non-REIT Breakdown



■ REIT 100.0% ■ Non-REIT 0.0%

Sector Breakdown



■ Diversified 1.6% ■ HealthCare 17.7%
■ Hotel 0.4% ■ Industrial 29.8%
■ Office 5.8% ■ Residential 19.6%
■ Retail 20.1% ■ Other 5.0%

Analysts:
Jeroen Vreeker j.vreeker@gpr.nl
Floris van Dorp f.van.dorp@gpr.nl

Global Property Research
Strawinskylaan 1327, Tower Eight, L13
1077 XW Amsterdam | The Netherlands

Phone Jeroen: +31 6 5118 9481
Phone Floris: +31 6 4545 6211
Email: info@gpr.nl | www.globalpropertyresearch.com

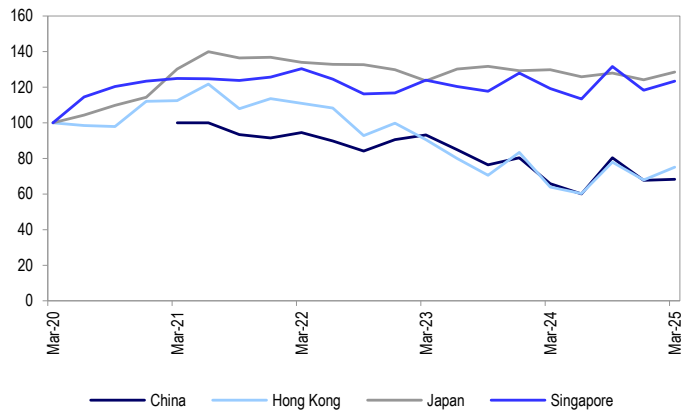
GPR 250 REIT Asia Index

Free Float Market Cap \$133,640 million

Constituents 54

The GPR 250 REIT Asia Index is a total return index that covers 54 property companies in the continent Asia. The GPR 250 REIT Index is daily calculated index based on free float market capitalisations, and incepted September 2001. All figures are based on the GPR 250 REIT Index in local currency.

Total Return	Asia	China	Hong Kong	Japan	Singapore
Q1	4.1%	0.9%	10.8%	3.5%	4.3%
YTD	4.0%	0.9%	11.1%	3.5%	3.7%
-1Y	1.6%	3.6%	17.5%	-1.0%	3.4%
-3Y	-8.3%	-27.8%	-32.2%	-4.1%	-5.4%
Weight	100.0%	0.0%	9.0%	63.0%	28.0%
Dividend yield	5.35%	0.00%	7.35%	4.84%	5.86%
Volatility	10.64%	N/A	25.49%	12.48%	14.63%



ASIA

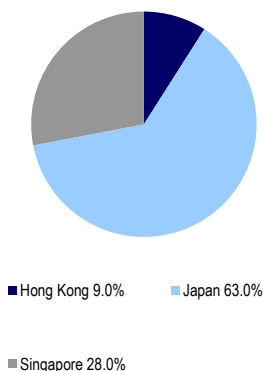
Top 5 and bottom 5 Performers

Company	Country	Continent	Currency	REIT	Sector	Free Float Market Cap	Total Return				Dividend		Weight
							Q1	YTD	-1Y	-3Y	Yield	Volatility	
▲ Tokyu REIT	JPN	ASI	JPY	Y	OFF	\$1,022	18.7%	18.7%	25.3%	29.5%	4.38%	16.90%	0.76%
▲ Mori Hills REIT	JPN	ASI	JPY	Y	OFF	\$1,443	16.3%	16.3%	13.6%	33.1%	4.76%	15.80%	1.08%
▲ Japan Metropolitan Fund Investment Corporati	JPN	ASI	JPY	Y	RET	\$4,574	16.0%	16.0%	18.9%	43.4%	5.31%	18.75%	3.42%
▲ Orix JREIT Inc.	JPN	ASI	JPY	Y	DIV	\$3,252	14.6%	14.6%	22.9%	57.8%	4.31%	18.84%	2.43%
▲ CapitaLand Integrated Commercial Trust	SGP	ASI	SGD	Y	DIV	\$7,792	14.4%	14.4%	24.5%	50.0%	5.17%	19.94%	5.83%
▼ KDX Realty Investment Corporation	JPN	ASI	JPY	Y	DIV	\$3,956	-1.1%	-1.1%	8.6%	23.5%	5.23%	19.17%	2.96%
▼ Nippon Accommodations Fund	JPN	ASI	JPY	Y	RES	\$1,743	-1.7%	-1.7%	-6.0%	15.4%	4.08%	17.21%	1.30%
▼ ESR-REIT	SGP	ASI	SGD	Y	IND	\$1,067	-2.8%	-2.8%	3.4%	6.6%	8.83%	29.46%	0.80%
▼ Invincible Investment Corporation	JPN	ASI	JPY	Y	HOT	\$3,221	-4.8%	-4.8%	9.6%	114.4%	5.92%	23.49%	2.41%
▼ Hoshino Resorts REIT Inc	JPN	ASI	JPY	Y	HOT	\$771	-9.3%	-9.3%	-22.0%	-24.0%	4.39%	19.21%	0.58%

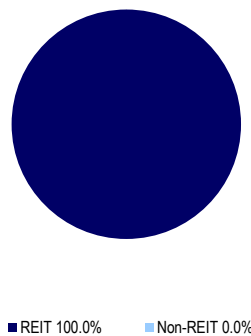
Top 10 by Free Float Market Cap

Company	Country	Continent	Currency	REIT	Sector	Free Float Market Cap	Total Return				Dividend		Weight
							Q1	YTD	-1Y	-3Y	Yield	Volatility	
1 Link REIT	HKG	ASI	HKD	Y	RET	\$12,058	10.8%	10.8%	38.5%	-0.5%	7.35%	26.77%	9.02%
2 CapitaLand Integrated Commercial Trust	SGP	ASI	SGD	Y	DIV	\$7,792	14.4%	14.4%	24.5%	50.0%	5.17%	19.94%	5.83%
3 CapitaLand Ascendas REIT	SGP	ASI	SGD	Y	DIV	\$7,068	13.5%	13.5%	14.7%	50.4%	5.69%	18.51%	5.29%
4 Nippon Building Fund	JPN	ASI	JPY	Y	OFF	\$6,896	4.1%	4.1%	20.5%	31.0%	3.85%	17.44%	5.16%
5 Japan Real Estate Investment	JPN	ASI	JPY	Y	OFF	\$4,992	6.3%	6.3%	13.4%	22.1%	4.54%	17.66%	3.74%
6 Japan Metropolitan Fund Investment Corporati	JPN	ASI	JPY	Y	RET	\$4,574	16.0%	16.0%	18.9%	43.4%	5.31%	18.75%	3.42%
7 KDX Realty Investment Corporation	JPN	ASI	JPY	Y	DIV	\$3,956	-1.1%	-1.1%	8.6%	23.5%	5.23%	19.17%	2.96%
8 Nomura Real Estate Master Fund Inc	JPN	ASI	JPY	Y	DIV	\$3,911	11.2%	11.2%	8.9%	30.4%	4.80%	18.57%	2.93%
9 GLP J-REIT	JPN	ASI	JPY	Y	IND	\$3,735	5.9%	5.9%	11.4%	-2.9%	5.33%	19.95%	2.79%
10 Nippon Prologis REIT Inc	JPN	ASI	JPY	Y	IND	\$3,503	3.9%	3.9%	-2.5%	-11.2%	4.41%	21.82%	2.62%

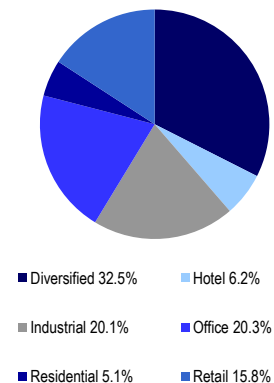
Regional Breakdown



REIT vs. Non-REIT Breakdown



Sector Breakdown



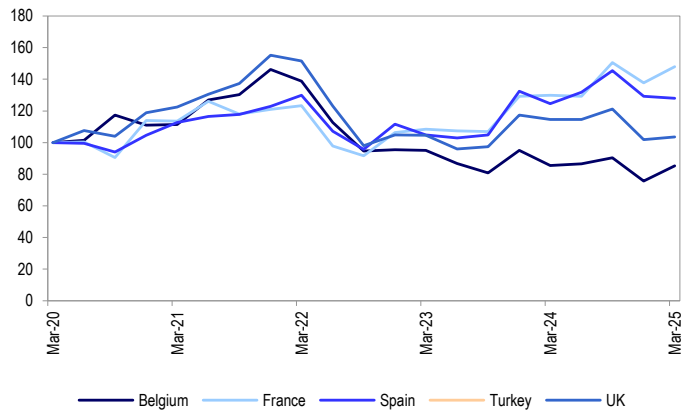
GPR 250 REIT Europe Index

Free Float Market Cap \$92,628 million

Constituents 28

The GPR 250 REIT Europe Index is a total return index that covers 28 property companies in the continent Europe. The GPR 250 REIT Index is daily calculated index based on free float market capitalisations, and incepted December 1989. All figures are based on the GPR 250 REIT Index in local currency.

Total Return	Europe	Belgium	France	Spain	Turkey	UK
Q1	4.1%	12.5%	7.5%	-1.0%	N/A	1.6%
YTD	4.9%	13.4%	8.0%	-0.5%	N/A	2.6%
-1Y	-2.4%	-0.3%	14.0%	2.7%	N/A	-9.7%
-3Y	-22.3%	-38.7%	20.1%	-1.4%	N/A	-31.7%
Weight	100.0%	10.7%	28.5%	6.0%	0.1%	54.7%
Dividend yield	5.40%	5.71%	5.53%	4.43%	0.00%	5.39%
Volatility	23.11%	24.11%	24.03%	25.47%	N/A	24.42%



EUROPE

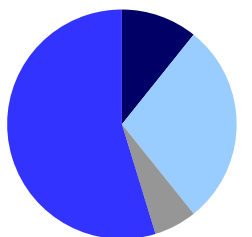
Top 5 and bottom 5 Performers

Company	Country	Continent	Currency	REIT	Sector	Free Float Market Cap	Total Return				Dividend		Weight
							Q1	YTD	-1Y	-3Y	Yield	Volatility	
▲ Assura PLC	GBR	EUR	GBP	Y	HCR	\$1,789	28.2%	28.2%	39.9%	29.3%	7.27%	26.92%	1.93%
▲ Urban Logistics REIT Plc	GBR	EUR	GBP	Y	IND	\$777	27.0%	27.0%	38.9%	17.3%	5.85%	30.99%	0.84%
▲ Icade	FRA	EUR	EUR	Y	DIV	\$704	23.8%	23.8%	58.4%	40.5%	21.81%	38.42%	0.76%
▲ Klepierre	FRA	EUR	EUR	Y	RET	\$7,399	21.8%	21.8%	57.0%	183.1%	5.90%	28.83%	7.99%
▲ Supermarket Income REIT plc	GBR	EUR	GBP	Y	RET	\$1,226	20.4%	20.4%	26.9%	14.7%	7.95%	27.74%	1.32%
▼ Shaftesbury Capital PLC	GBR	EUR	GBP	Y	DIV	\$2,195	-0.5%	-0.5%	-7.1%	-13.9%	2.68%	29.54%	2.37%
▼ Land Securities Plc	GBR	EUR	GBP	Y	DIV	\$5,285	-1.1%	-1.1%	1.7%	23.2%	7.31%	27.26%	5.71%
▼ MERLIN Properties SOCIMI S.A.	ESP	EUR	EUR	Y	DIV	\$4,169	-3.0%	-3.0%	11.1%	77.5%	4.26%	27.86%	4.50%
▼ Derwent London Plc	GBR	EUR	GBP	Y	OFF	\$2,335	-5.8%	-5.8%	-4.7%	-22.2%	4.33%	29.25%	2.52%
▼ Hammerson Plc	GBR	EUR	GBP	Y	RET	\$1,459	-11.7%	-11.7%	-2.5%	43.5%	6.22%	43.98%	1.58%

Top 10 by Free Float Market Cap

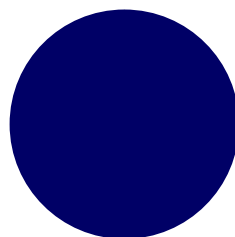
Company	Country	Continent	Currency	REIT	Sector	Free Float Market Cap	Total Return				Dividend		Weight
							Q1	YTD	-1Y	-3Y	Yield	Volatility	
1 Segro Plc	GBR	EUR	GBP	Y	IND	\$11,050	7.6%	7.6%	-14.0%	-29.7%	4.24%	28.75%	11.93%
2 Unibail-Rodamco-Westfield	FRA	EUR	EUR	Y	RET	\$9,915	7.1%	7.1%	14.9%	25.5%	3.21%	32.99%	10.70%
3 Klepierre	FRA	EUR	EUR	Y	RET	\$7,399	21.8%	21.8%	57.0%	183.1%	5.90%	28.83%	7.99%
4 Land Securities Plc	GBR	EUR	GBP	Y	DIV	\$5,285	-1.1%	-1.1%	1.7%	23.2%	7.31%	27.26%	5.71%
5 British Land Company Plc	GBR	EUR	GBP	Y	DIV	\$4,626	2.5%	2.5%	11.2%	19.4%	6.19%	28.75%	4.99%
6 LondonMetric Property Plc	GBR	EUR	GBP	Y	IND	\$4,588	7.2%	7.2%	8.6%	8.6%	6.38%	27.74%	4.95%
7 The UNITE Group plc	GBR	EUR	GBP	Y	RES	\$4,362	0.9%	0.9%	-6.7%	-5.7%	4.42%	25.98%	4.71%
8 Warehouses De Pauw	BEL	EUR	EUR	Y	IND	\$4,230	15.4%	15.4%	-5.2%	-23.1%	5.11%	28.50%	4.57%
9 Gecina	FRA	EUR	EUR	Y	OFF	\$4,183	5.2%	5.2%	10.1%	27.5%	6.16%	26.10%	4.52%
10 MERLIN Properties SOCIMI S.A.	ESP	EUR	EUR	Y	DIV	\$4,169	-3.0%	-3.0%	11.1%	77.5%	4.26%	27.86%	4.50%

Regional Breakdown



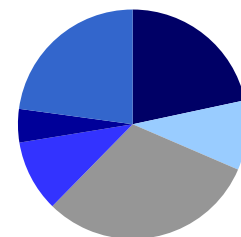
■ Belgium 10.7% ■ France 28.5%
■ Spain 6.0% ■ UK 54.7%

REIT vs. Non-REIT Breakdown



■ REIT 100.0% ■ Non-REIT 0.0%

Sector Breakdown



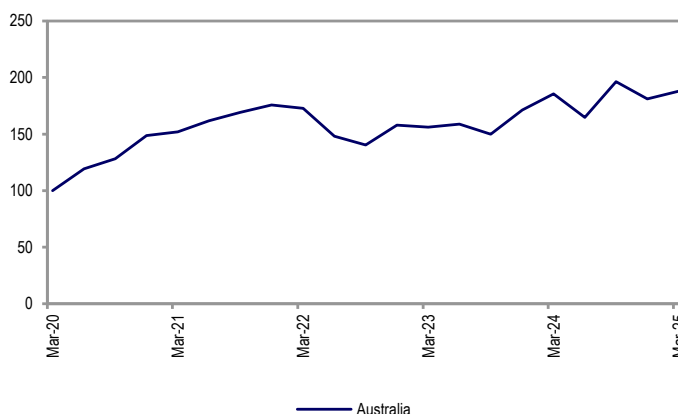
■ Diversified 21.7% ■ HealthCare 9.8%
■ Industrial 30.9% ■ Office 10.1%
■ Residential 4.7% ■ Retail 22.9%

GPR 250 REIT Oceania Index

Free Float Market Cap \$49,886 million
Constituents 15

The GPR 250 REIT Oceania Index is a total return index that covers 15 property companies in the continent Oceania. The GPR 250 REIT Index is daily calculated index based on free float market capitalisations, and incepted December 1989. All figures are based on the GPR 250 REIT Index in local currency.

Total Return	Oceania	Australia
Q1	3.7%	3.7%
YTD	2.1%	2.1%
-1Y	1.2%	1.2%
-3Y	8.8%	8.8%
Weight	100.0%	100.0%
Dividend yield	5.37%	5.37%
Volatility	19.35%	19.35%



OCEANIA

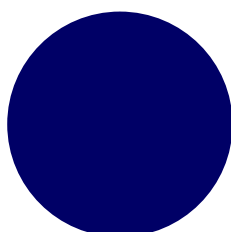
Top 5 and bottom 5 Performers

Company	Country	Continent	Currency	REIT	Sector	Free Float		Total Return				Dividend		Weight
						Market Cap	Q1	YTD	-1Y	-3Y	Yield	Volatility		
▲ Ingénia Communities Group	AUS	OCE	AUD	Y	RES	\$1,280	21.6%	21.6%	10.3%	32.9%	2.08%	29.71%	2.57%	
▲ Charter Hall Retail REIT	AUS	OCE	AUD	Y	RET	\$1,149	13.7%	13.7%	21.3%	60.0%	6.90%	23.07%	2.30%	
▲ Vicinity Centres	AUS	OCE	AUD	Y	RET	\$5,274	13.6%	13.6%	21.5%	99.1%	5.39%	24.20%	10.57%	
▲ Mirvac Group	AUS	OCE	AUD	Y	OFF	\$5,124	11.5%	11.5%	4.7%	31.2%	5.02%	27.22%	10.27%	
▲ HomeCo Daily Needs REIT	AUS	OCE	AUD	Y	RET	\$1,232	8.7%	8.7%	14.8%	52.9%	7.16%	24.25%	2.47%	
▼ Charter Hall Long WALE REIT	AUS	OCE	AUD	Y	DIV	\$1,467	3.7%	3.7%	18.3%	28.9%	6.84%	22.82%	2.94%	
▼ Stockland	AUS	OCE	AUD	Y	RES	\$7,322	2.1%	2.1%	19.2%	96.1%	5.02%	24.60%	14.68%	
▼ Region RE Limited	AUS	OCE	AUD	Y	RET	\$1,498	0.0%	0.0%	4.9%	22.2%	6.62%	22.38%	3.00%	
▼ The GPT Group	AUS	OCE	AUD	Y	DIV	\$5,199	-0.2%	-0.2%	12.9%	40.1%	5.50%	25.61%	10.42%	
▼ National Storage REIT	AUS	OCE	AUD	Y	IND	\$1,767	-5.1%	-5.1%	6.4%	24.9%	4.95%	22.20%	3.54%	

Top 10 by Free Float Market Cap

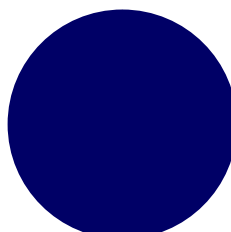
Company	Country	Continent	Currency	REIT	Sector	Free Float		Total Return				Dividend		Weight
						Market Cap	Q1	YTD	-1Y	-3Y	Yield	Volatility		
1 Scentre Group	AUS	OCE	AUD	Y	RET	\$10,896	5.1%	5.1%	14.7%	77.6%	5.12%	24.24%	21.84%	
2 Stockland	AUS	OCE	AUD	Y	RES	\$7,322	2.1%	2.1%	19.2%	96.1%	5.02%	24.60%	14.68%	
3 Vicinity Centres	AUS	OCE	AUD	Y	RET	\$5,274	13.6%	13.6%	21.5%	99.1%	5.39%	24.20%	10.57%	
4 The GPT Group	AUS	OCE	AUD	Y	DIV	\$5,199	-0.2%	-0.2%	12.9%	40.1%	5.50%	25.61%	10.42%	
5 Mirvac Group	AUS	OCE	AUD	Y	OFF	\$5,124	11.5%	11.5%	4.7%	31.2%	5.02%	27.22%	10.27%	
6 Dexus	AUS	OCE	AUD	Y	OFF	\$4,682	6.3%	6.3%	7.3%	13.3%	5.69%	25.27%	9.38%	
7 National Storage REIT	AUS	OCE	AUD	Y	IND	\$1,767	-5.1%	-5.1%	6.4%	24.9%	4.95%	22.20%	3.54%	
8 Region RE Limited	AUS	OCE	AUD	Y	RET	\$1,498	0.0%	0.0%	4.9%	22.2%	6.62%	22.38%	3.00%	
9 Charter Hall Long WALE REIT	AUS	OCE	AUD	Y	DIV	\$1,467	3.7%	3.7%	18.3%	28.9%	6.84%	22.82%	2.94%	
10 Ingénia Communities Group	AUS	OCE	AUD	Y	RES	\$1,280	21.6%	21.6%	10.3%	32.9%	2.08%	29.71%	2.57%	

Regional Breakdown



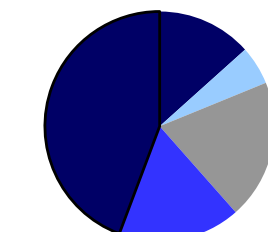
■ Australia 100.0%

REIT vs. Non-REIT Breakdown



■ REIT 100.0% ■ Non-REIT 0.0%

Sector Breakdown



■ Diversified 13.4% ■ Industrial 5.5%
■ Office 19.7% ■ Residential 17.2%
■ Retail 44.3%