



# Eve Single

---

## Quick installation guide



**ALFEN**  
POWER TO ADAPT

en



*This document contains installation instructions for the Eve Single. Please always refer to our website for the most up-to-date and complete manual for the product.*  
[www.alfen.com/en/downloads](http://www.alfen.com/en/downloads)

## Installation conditions



*The installation must comply with standards and (local) regulations and must only be carried out by a qualified technician.*

### Conditions of use

Operating temperature	-25 °C / +40 °C	
Relative humidity	5% / 95%	
Electrical safety class	I	
Protection rating	IP55	
Mechanical impact	IK10	

### Nominal input voltage

Single-phase	230 V ± 10%	50 Hz
3-phase	400 V ± 10%	50 Hz

### Short-circuit protection (system circuit breaker)

	Single-phase	3-phase
16 A	1x 20 A, 1P, char. B or C	1x 20 A, 3P, char. B or C
32 A	1x 40 A, 1P, char. B or C	1x 40 A, 3P, char. B or C

### Short-circuit protection (cartridge fuses)

	Single-phase	3-phase
16 A	1x 20 A gG	3x 20 A gG
32 A	1x 35 A gG	3x 35 A gG

### Residual current device

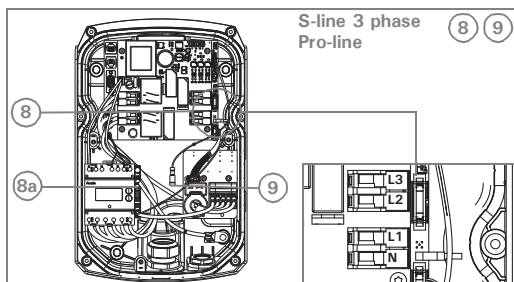
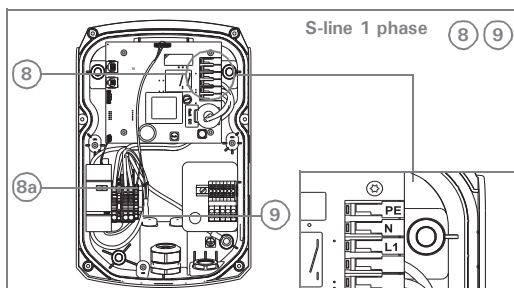
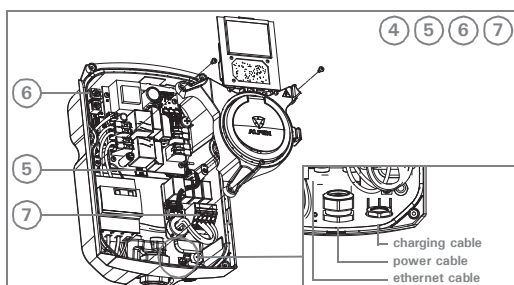
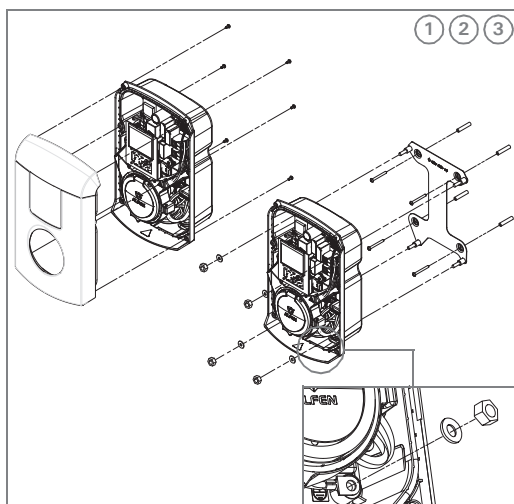
	Single-phase	3-phase
16 A	Type A or B, 30 mA, 20 A	
32 A	Type A or B, 30 mA, 40 A	

### Earthing

TN system	PE cable
TT system	self-installed earth electrode, < 100 Ohm earth dispersion resistance

### Minimum cable diameters (for max. length of 50 m)

	Single-phase	3-phase
16 A	3x 4 mm <sup>2</sup>	5x 4 mm <sup>2</sup>
32 A	3x 6 mm <sup>2</sup>	5x 6 mm <sup>2</sup>



## Installing

### 1 Remove the front cover.

- Place the Eve Single with the front cover facing downwards.



**Use the box as a base, to avoid damaging the Eve Single.**

- Remove the mounting bracket.
- Unscrew the six T20 screws.
- Turn the Eve Single over again.
- Pull the front cover straight upwards.

### For wall mounting only:

### 2 Fit the mounting bracket.

- Drill the holes.



**Use the mounting bracket as a template to mark the holes.**

- Fit the wall plugs.
- Secure the mounting bracket with the 4 screws.



**Ensure the wall plugs and screws are suitable for the type of wall.**

### 3 Fit the Eve Single.

- Position the Eve Single on the mounting bracket or mounting pole.



**Do not drop the Eve Single. Keep hold of the Eve Single with one hand.**

- Tighten the four M8 washers and nuts.



**Fit the earth cable under the bottom right-hand washer and nut.**

### 4 Remove the frame and the plug connection.

- Unscrew the three T20 screws.



**Do not damage the power cables. Leave the frame hanging carefully next to the housing.**

### For control management via SIM only:

### 5 Fit the SIM card.

### For control management via the internet only:

### 6 Connect the ethernet cable.

- Feed the cable through the gland.
- Connect the cable.
- Tighten the gland.



**Ensure the cable is clamped firmly in the gland. Only then will the IP55 sealing be effective.**

### 7 Connect the power cable.



**Make sure the power cable is not live.**

- Feed the cable through the gland.
- Connect the cores to the terminals.
- Tighten the gland.



**Ensure the cable is clamped firmly in the gland. Only then will the IP55 sealing be effective.**

### Only for model with charging cable:

### 8 Connect the charging cable.

- Feed the cable through the gland.
- Connect the cores to the terminals.
- Fit the Earth cable to the terminal.(8a)



**Ensure the phases are connected to the correct terminals.**

### 9 Connect the CP cable.

- Connect the CP cable to the connector.
- Tighten the gland.



**Ensure the cable is clamped firmly in the gland. Only then will the IP55 sealing be effective.**

### 10 Put the frame back in place.

- Tighten the three T20 screws.



**Take care not to damage the cables; keep them clear of the locking mechanism so they do not obstruct it.**

### 11 Refit the front cover.

- Place the front cover on the housing.
- Tighten the six T20 screws on the back.



**Avoid dropping the front cover. Keep hold of the front cover with one hand.**

## Status indication

### Pro-line

	Charging pass accepted, cable connected.
	Communicating with vehicle, or charged and ready to use.
	Charging transaction active, with indication of charging rate.
	Error message, with error code.

### S-line

	Green	Charging pass accepted, cable connected.
	Cyan	Communication with vehicle, or charged and ready to use.
	Blue (steady)	Charging transaction active.
	Blue (flashing)	Load balancing activated. Charging at reduced rate.
	Blue-Cyan (alternating)	Load balancing activated. Charging paused.
	Red	Error message.

# Waste Electrical and Electronic Equipment (WEEE)

Electrical and electronic equipment (EEE) contains materials, components and substances that may be hazardous and present a risk to human health and the environment when waste electrical and electronic equipment (WEEE) is not handled correctly.

Equipment marked with the below crossed-out wheeled bin is electrical and electronic equipment.

The crossed-out wheeled bin symbol indicates that waste electrical and electronic equipment should not be discarded together with unseparated household waste, but must be collected separately.

For this purpose all local authorities have established collection schemes under which residents can dispose waste electrical and electronic equipment at a recycling centre or other collection points, or WEEE will be collected directly from households. More detailed information is available from the technical administration of the relevant local authority.

Users of electrical and electronic equipment must not discard WEEE together with household waste. Residents must use the municipal collection schemes to reduce adverse environmental impacts in connection with disposal of waste electrical and electronic equipment and to increase opportunities for reuse, recycling and recovery of waste electrical and electronic equipment.



# Contact

---

**Alfen ICU B.V.**

Hefbrugweg 28  
1332 AP Almere  
The Netherlands

P.O. box 1042  
1300 BA Almere  
The Netherlands

Tel. Sales Support: +31 (0)36 54 93 402

Tel. Service: +31 (0)36 54 93 401

Website: [www.alfen.com/nl/laadpalen-ev](http://www.alfen.com/nl/laadpalen-ev)  
[www.alfen.com/en/ev-charge-points](http://www.alfen.com/en/ev-charge-points)

Art.nr.: 203130039-ICU