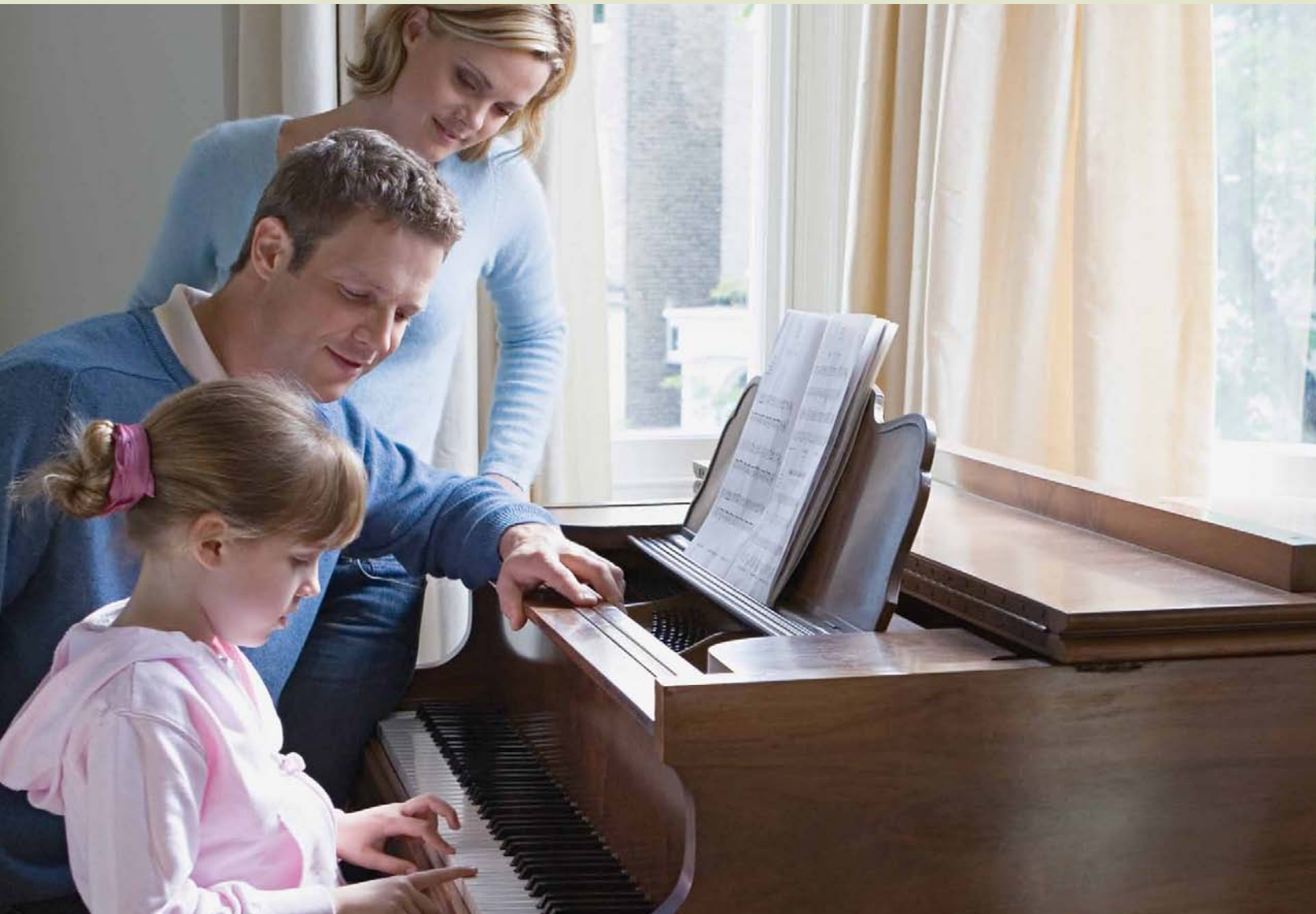




Echelon™ Series Premium Humidifiers

Every Moment Deserves Coleman® Comfort



Indoor air quality solutions for your comfort



Restoring moisture and comfort to your home

The temperature and resulting comfort level in your home is directly affected by the amount of humidity in the air. When air is heated, the “relative humidity” drops and results in static shocks, cracked woodwork and even respiratory issues. Insufficient humidity also makes you feel colder, tempting you to turn the thermostat higher than necessary. An Echelon™ Whole-Home Humidifier delivers comforting humidity and eliminates all the results of extremely dry air. These systems are designed for simple operation and long life.

Making comfort a breeze

Echelon™ Whole-Home Fan Powered, Bypass and Steam Humidifiers work to keep your home comfortable throughout the heating season and even year-round in those highly dry climates where humidity is needed virtually every day. These systems work seamlessly through your existing HVAC system, humidifying your entire home—without all the limitations and added maintenance of single room humidifiers.

Year-round comfort

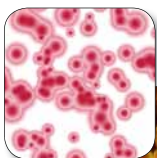
Echelon™ Whole-Home Humidifiers use natural evaporation to maintain optimal humidity, helping eliminate cracked, dry skin and annoying static shocks that come with excessively dry air. The end result is optimum comfort any time your humidifier is operating.

Healthier air for a healthier family

Bacteria, viruses and respiratory infections are more abundant in very dry conditions. That’s why it’s so important to maintain proper levels of humidity, to avoid an overly dry environment—which puts you and your family at a significantly higher risk of infection. Your Echelon™ Whole-Home Humidifier provides optimum levels of humidity, filling your home with healthier air.

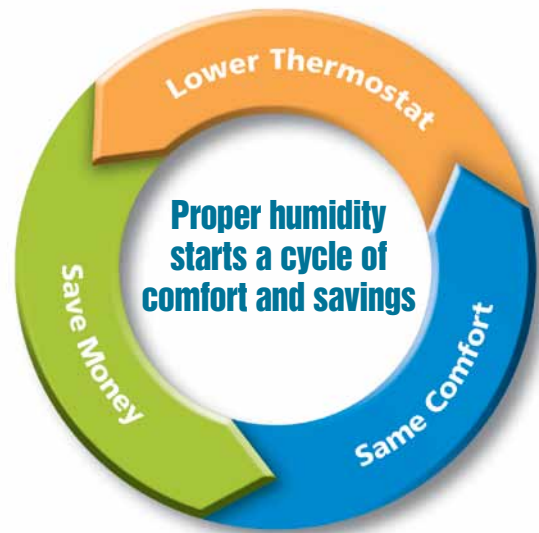
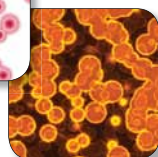
Mold Spores

Size (micron) 3–10



Bacteria

Size (micron) .35–10








Savings you can see

It’s been proven that lower temperatures with proper humidity levels are more comfortable than, for example, dry air with a temperature that is 3 degrees higher. So let your humidifier add the necessary moisture and reduce your thermostat setting by 3 degrees to save as much as 5% on your heating bill.

Protecting precious furnishings

Properly humidified air will protect valuables like fine art, musical instruments, leather and precious antiques. It also keeps wooden floors and the woodwork around doors and windows from cracking. Protect your home and all its furnishings with an Echelon™ Whole-Home Humidifier.

ort and health

Model	Capacity gpd = gallons per day	A. Unit Size (inches) B. Plenum Opening (inches)	Electrical Data
 <p>Model S1-BP4000MT Large Bypass Water Saver Unit—Patented technology uses 100% of its water while having less than 8 ounces of water in the system at any given time. This eliminates the need for a drain.</p>	17 gpd	A. 15-3/8W x 15-3/4H x 10-1/4D 6" diameter round opening B. 10W x 12-3/4H	24V-60Hz 0.5 AMP
<p><i>NOTE: Heat pumps—Model S1-BP4000MT can be installed in heat pump applications. However, due to the fact that heat pumps deliver lower temperature air to the home than gas furnaces, evaporation will be approximately 60% of rated capacity. (With other Echelon™ models hot water can be used instead of cold to maximize evaporation. However, due to the nature of the wicking water panel in the Model S1-BP4000MT hot water provides less benefit.) As such, your dealer will need to take the size and age of your home into consideration to ensure the Model S1-BP4000MT will provide satisfactory comfort and protection through adequate humidification.</i></p>			
 <p>Model S1-BP5000MT Small Bypass Unit—Designed for smaller homes, using the HVAC system blower to move air through the humidifier.</p>	12 gpd	A. 15-5/8W x 13H x 10-1/4D 6" diameter round opening B. 9-1/2W x 9-1/2H	24V-60Hz 0.5 AMP
 <p>Model S1-BP6000MT Large Bypass Unit—Larger version of the small bypass humidifier using the same evaporative technology.</p>	17 gpd	A. 15-3/8W x 15-3/4H x 10-1/4D 6" diameter round opening B. 10W x 12-3/4H	24V-60Hz 0.5 AMP
 <p>Model S1-FP7000MT Large Fan Power Unit—Uses an internal fan to move warm air from the furnace through the humidifier.</p>	18 gpd	A. 15-29/32W x 18H x 10-11/32D B. 14-3/4W x 14-5/16H	120V-60Hz 0.8 AMP
 <p>Model S1-STEAM8000T01 Residential Steam Humidifier—For applications when evaporative units are less practical (attics, crawl spaces, closets, milder winter climates, non-forced air heating source).</p>	11.5 gpd	A. 10-1/8W x 20-7/8H x 7-1/8D B. N/A	120V-60Hz 11.5 AMP
	20.5 gpd		208V-60Hz 11.5 AMP
	23.3 gpd		240V-60Hz 11.5 AMP

The difference between an automatic humidifier control and a manual humidistat

The optimum levels of relative humidity in your home fluctuate with the change in outdoor temperature. The automatic humidifier control continually monitors and responds to those changes, delivering optimum levels of humidity throughout your home. You never have to monitor your settings or wait until you feel uncomfortable because the automatic “set it and forget it” control keeps your home’s humidity level exactly where you want it. It also comes equipped with a green LED light, which notifies you when it’s time to change the water panel. With a manual humidistat, you will have to adjust the control yourself as the outdoor temperature changes.



Coleman® Echelon™ Series Premium Humidifiers

Model	Description	Limited Warranty
S1-BP4000MT	Large Bypass Water Saver Humidifier	5-Year Parts
S1-BP5000MT	Small Bypass Humidifier	5-Year Parts
S1-BP6000MT	Large Bypass Humidifier	5-Year Parts
S1-FP7000MT	Large Fan Powered Humidifier	5-Year Parts
S1-STEAM8000T01	Residential Steam Humidifier	5-Year Parts

For more information about Coleman® Indoor Air Quality products, call **877-726-5362** to locate your nearest dealer or visit www.colemanac.com



Comfort with a conscience

It seems as if everyone is trying to be “green” today. At Coleman®, we’ve got a longstanding heritage with the environment that began over 100 years ago, the moment we lit our first outdoor lantern. Since then, generations of families have depended on rugged, reliable Coleman® products to bring them comfort—whether in the great outdoors or indoors.

Today, many companies offer a “green” or “sustainable” solution, but most often, you have to pay a premium. Coleman® believes in accessible sustainability—where everyone can have peace of mind with affordable, environmentally-friendly products. Through Coleman® innovation, you’re getting more performance in less space while using less energy, fewer raw

materials and less refrigerant. Our air conditioners offer one of the smallest footprints in the industry and are available with non-ozone depleting R-410A refrigerant. Coleman® modulating gas furnaces feature not only a reduced size, but also the highest fuel efficiency rating in the industry. Plus, many of Coleman®’s products have earned ENERGY STAR® certification. When you can bring all this value, and still be affordable, that’s accessible sustainability!

When you see the Coleman® logo, you know you’re investing in more than a reliable home comfort system. You’re investing in the sustainability of the environment. Your environment. We call it comfort with a conscience.



HEATING & AIR CONDITIONING

Coleman® and Echelon™ are registered trademarks of The Coleman Company, Inc., used under license. Manufactured by Johnson Controls, Inc., 5005 York Drive, Norman, OK 73069, www.colemanac.com. © 2011 Johnson Controls, Inc. All rights reserved. Subject to change without notice. Form PUBL-6796-A-1011. Supersedes: PUBL-6178-A-0909. Printed in USA.