



Introducing EcoNet™, the smart home system for heating, cooling and water heating developed exclusively by Rheem.



The EcoNet™ WiFi Kits* provide remote access to EcoNet™ Enabled Electric and Gas Water Heaters from mobile apps and a mobile friendly web portal.

Contractor Benefits:

EcoNet™ makes it easier than ever for homeowners to save energy and achieve that perfect temperature – all while giving you the diagnostics you need to deliver that perfect level of service.

- Equipment Detection – EcoNet™ automatically detects all connected equipment
- Equipment Alerts – Help homeowners identify what part of equipment requires attention before making service call
- Contact Info – Contractor contact details stored in the EcoNet™ app are automatically displayed when equipment alerts occur

*WiFi broadband internet connection required, EcoNet WiFi Kit sold separately



The new degree of comfort.™

Water Residential Gas Water Heaters

The Rheem Guardian System™



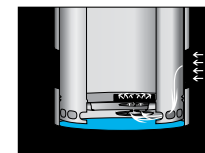
Flammable Vapor Ignition Resistance
Guardian is the best-in-class FVIR System that's engineered to exceed ANSI standards.

Exclusive, Air Shut-Off System
It shuts off gas and air supplies – providing double protection.



Flame Arrestor Plate
A specially-designed flame arrestor prevents ignition of vapors outside the combustion chamber.

Superior Air Filtration
It prevents the flame arrestor from becoming clogged by lint, dust and oil.



Maintenance-Free! No Filters to Clean!
Guardian System has no filters to service, replace or clean.

Standard Replacement Parts
Guardian System incorporated a standard gas valve and Thermocouple – easy to replace.



It's Easy to Light
No matches are required with the Rheem Guardian System.

Plus...

- Guardian System models are high altitude compliant – some models certified for applications up to 6,000 and 10,200 feet above sea level.
- Zero clearance to combustibles, rear and side.
- Energy efficient! Get more hot water at a lower operating cost!
- Available on most Rheem gas water heater models.



What size Rheem gas model do you need?

How many are in the family?	
How many bathtubs or showers?*	
Automatic dishwasher? (Mark 1 if yes)	
Washing machine? (Mark 1 if yes)	
TOTAL	

*Refers to standard capacity baths; spa, whirlpool or oversized baths may require a larger sized water heater.

IF TOTAL IS	YOU NEED
4 or less	30-gallon
5-7	40-gallon
8 or more	50-gallon or >>

**Depends on your household water consumption patterns, you may wish to consider a high input 75 or 99-gallon model.

In keeping with its policy of continuous progress and product improvement, Rheem reserves the right to make changes without notice.

Rheem Water Heating • 101 Bell Road
Montgomery, Alabama 36117-4305 • 1.800.621.5622



Rheem.com

PRINTED IN U.S.A. 08/15 WP FORM NO. RG-101 Rev. 15

Product Line Brochure
Water Heaters | Residential Gas



The new degree of comfort.™

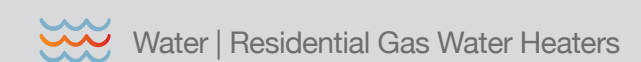
COMFORT

YOU CAN DEPEND ON



Residential Gas Water Heaters:
More hot water and lower operating costs

- Best known brand
- Best FVIR solution
- Best quality, fewer call backs
- Large line of ENERGY STAR® water heaters



Gas Water Heaters Designed for Professionals By Professionals

With the Rheem Professional Product Line, you have a full range of gas models organized into three product tiers (*Prestige*,[™] *Classic Plus*[™] and *Classic*[™]) to make selling and upselling easier. And you can't miss the bold look of the Rheem Professional. Advanced diagnostics, enhanced-flow brass drain valves and maintenance free FVIR system make the Professional line an attractive choice for busy plumbers. Having a large selection of ENERGY STAR® models ensures homeowners can reduce their energy costs and greenhouse emissions for years to come.

Vent Hood
Connects the water heater to the venting system. It aids in assisting in the updraft movement of the combustion gasses.

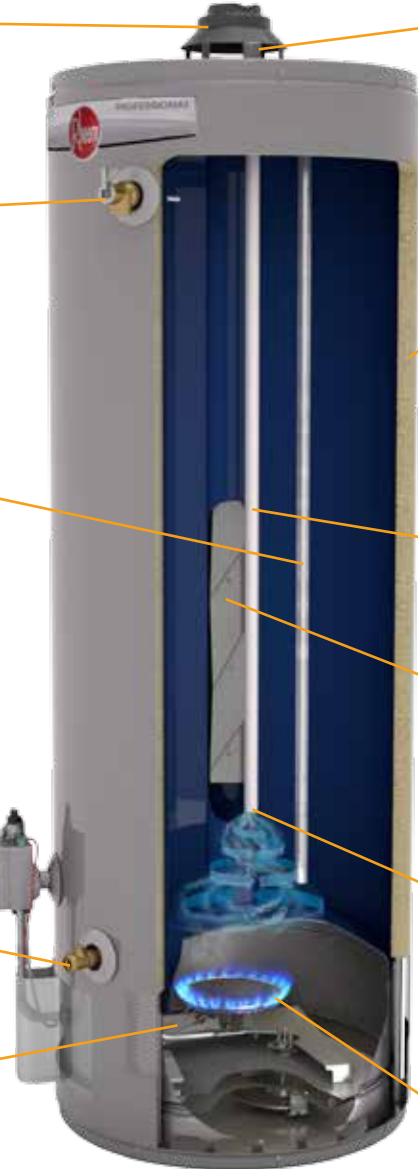
Temperature and Pressure Relief Valve
Commonly referred to as the "T&P" valve. This safety device opens to allow water to escape if the tank pressure or temperature becomes excessive.

Cold Water Inlet and Dip Tube
The connection point for incoming cold water. The inlet connects directly to a dip tube which directs the incoming water to the bottom of the tank.

Gas Control/Thermostat
Maintains desired temperature of the water by regulating the flow of fuel to the burner.

Enhanced-Flow Brass Drain Valve
Allows the tank to be emptied should service be required.

Thermocouple
Senses the presence or absence of the pilot flame to determine whether it is OK for the gas valve to open.



Plastic Line Nipples/Heat Traps
Thermoplastic lined nipples impede galvanic corrosion. "Heat trap" nipples also contain a check valve to reduce heat loss between hot water in the tank and cold water pipes.

Exclusive Rheemglas® Porcelain Enamel Tank Lining
Engineered for durability and long tank life.

Anode Rod
Premium grade anode rod protects tank against premature corrosion.

Flue Baffle
Slows air movement through the flue. By keeping the combustion gases in the flue longer, more heat is transferred to the water in the tank.

EverKleen™ Self Cleaning System
This patented system creates a turbulent swirling action that reduces sediment and improves efficiency.

Burner Assembly
Heats the water in the tank by using a flame from either natural gas or liquid propane.

RESIDENTIAL TANK-TYPE GAS | Professional Prestige,[™] Classic Plus[™] & Classic[™] Models

 <p>PRESTIGE HIGH EFFICIENCY CONDENSING POWER DIRECT VENT</p> <ul style="list-style-type: none"> • .82 EF • Long vent runs up to 60 feet with plastic pipe • Integrated self-diagnostic system • Natural gas and LP • 38 and 48-Gallon capacities • Up to 40,000 Btu/h • Enhanced-flow brass drain valve <p>Limited Warranty</p> <ul style="list-style-type: none"> • Tank and Parts – 6 Years 	 <p>PRESTIGE POWERED DAMPER</p> <ul style="list-style-type: none"> • .67 - .69 EF • Energy efficient damper design • Integrated self-diagnostic system control, flammable vapor detection sensor • EcoNet[™] enabled* • 38 and 50-Gallon capacities • Up to 40,000 Btu/h <p>Limited Warranty</p> <ul style="list-style-type: none"> • Tank and Parts – 12 Years 	 <p>PRESTIGE POWERED DAMPER ULTRA LOW NOx</p> <ul style="list-style-type: none"> • .68 EF • Energy efficient damper design • Integrated self-diagnostic system control, flammable vapor detection sensor • EcoNet[™] enabled* • 40 and 50-Gallon capacities • 36,000 Btu/h <p>Limited Warranty</p> <ul style="list-style-type: none"> • Tank and Parts – 12 Years 	 <p>CLASSIC PLUS INDUCED DRAFT</p> <ul style="list-style-type: none"> • .70 EF • Recovery: 61 GPH at 90° F rise • Integrated self-diagnostic system • 29-Gallon capacity with 90 Gallon FHR performance • Small foot print, 17 3/4 inch diameter • 60,000 Btu/h, nat. gas only • Enhanced-flow brass drain valve <p>Limited Warranty</p> <ul style="list-style-type: none"> • Tank and Parts – 8 Years 	 <p>CLASSIC PLUS POWERED DAMPER</p> <ul style="list-style-type: none"> • .67 - .69 EF • Recovery: 36.4 to 50.5 GPH at a 90° F rise • Integrated self-diagnostic system • Energy efficient 24 VAC flue damper • Meets 40 ng/J NOx requirements • 38, 40, and 50-Gallon capacities • Up to 50,000 Btu/h • Enhanced-flow brass drain valve <p>Limited Warranty</p> <ul style="list-style-type: none"> • Tank and Parts – 8 Years 	 <p>CLASSIC PLUS ATMOSPHERIC</p> <ul style="list-style-type: none"> • .59 - .62 EF • Recovery: 36.4 to 60 GPH at a 90° F rise • Meets 40 ng/J NOx requirements • 40, 43, 50 and 55-Gallon capacities • Up to 60,000 Btu/h • Enhanced-flow brass drain valve <p>Limited Warranty</p> <ul style="list-style-type: none"> • Tank and Parts – 8 Years 	 <p>CLASSIC PLUS HEAVY DUTY ATMOSPHERIC</p> <ul style="list-style-type: none"> • Recovery Capacity: 72.8 GPH at a 100° F rise • Meets 40 ng/J NOx requirements • 75 and 98-Gallon capacities • Up to 75,100 Btu/h • Enhanced-flow brass drain valve <p>Limited Warranty</p> <ul style="list-style-type: none"> • Tank and Parts – 8 Years 	 <p>CLASSIC PLUS POWER DIRECT VENT</p> <ul style="list-style-type: none"> • .62 EF • Recovery: 47.5 to 65.7 GPH at a 90° F rise • Integrated self-diagnostic system • Long venting options up to 100 ft. • Meets 40 ng/J NOx requirements • 50-Gallon capacity • Up to 65,000 Btu/h • Enhanced-flow brass drain valve <p>Limited Warranty</p> <ul style="list-style-type: none"> • Tank and Parts – 8 Years 	 <p>CLASSIC PLUS HEAVY DUTY POWER DIRECT VENT</p> <ul style="list-style-type: none"> • Recovery capacity: 72.8 GPH at a 100° F rise • Long venting options up to 100 ft. • Meets 40 ng/J NOx requirements • 75-Gallon capacity • 75,100 Btu/h <p>Limited Warranty</p> <ul style="list-style-type: none"> • Tank and Parts – 8 Years
---	--	--	---	---	---	--	---	--



Residential Tank-Type Gas Continued

 <p>CLASSIC PLUS HEAVY DUTY POWER VENT</p> <ul style="list-style-type: none"> • Recovery Capacity: 72.8 GPH at a 100° F rise • Long venting options up to 100 feet • Integrated self-diagnostic system • 75-Gallon capacities • Up to 75,000 Btu/h • Enhanced-flow brass drain valve <p>Limited Warranty</p> <ul style="list-style-type: none"> • Tank and Parts – 8 Years 	 <p>CLASSIC PLUS POWERED DAMPER ULTRA LOW NOx</p> <ul style="list-style-type: none"> • .68 EF • Recovery: 36.4 GPH at a 90° F rise • Integrated self-diagnostic system • Energy efficient 24 VAC flue damper • Meets 10 ng/J NOx requirements • 40 and 50-Gallon capacities • Ultra low NOx 36,000 Btu/h burner • Enhanced-flow brass drain valve <p>Limited Warranty</p> <ul style="list-style-type: none"> • Tank and Parts – 8 Years 	 <p>CLASSIC PLUS ULTRA LOW NOx</p> <ul style="list-style-type: none"> • .59 - .63 EF • Recovery: 30.3 to 45.5 GPH at a 90° F rise • Features the Guardian System • Meets 10 ng/J NOx requirements • 28, 38, 50 and 55-Gallon capacities • 45,000 Btu/h • Enhanced-flow brass drain valve <p>Limited Warranty</p> <ul style="list-style-type: none"> • Tank and Parts – 8 Years 	 <p>CLASSIC PLUS HEAVY DUTY ULTRA LOW NOx</p> <ul style="list-style-type: none"> • Recovery Capacity: 72.8 GPH at a 100° F rise • Integrated self-diagnostic system • Meets 14 ng/J NOx requirements • Features flammable detection system • 75 and 98-Gallon capacities • 75,100 Btu/h, natural gas only • Enhanced-flow brass drain valve <p>Limited Warranty</p> <ul style="list-style-type: none"> • Tank and Parts – 8 Years 	 <p>CLASSIC ATMOSPHERIC</p> <ul style="list-style-type: none"> • .60 - .63 EF • Recovery: 30.3 to 40.4 GPH at a 90° F rise, based on model • Features the Guardian System • Meets 40 ng/J NOx requirements • 29, 30, 40 and 50-Gallon capacities • 75 and 98-Gallon capacities • Enhanced-flow brass drain valve <p>Limited Warranty</p> <ul style="list-style-type: none"> • Tank and Parts – 6 Years 	 <p>CLASSIC POWER VENT</p> <ul style="list-style-type: none"> • .67 EF • Recovery: 32.4 to 42.4 GPH at a 90° F rise, based on model • Integrated self-diagnostic system • Long venting options up to 100 feet • Whisper quiet blower • 40 and 50-Gallon capacities • Up to 42,000 Btu/h • Enhanced-flow brass drain valve <p>Limited Warranty</p> <ul style="list-style-type: none"> • Tank and Parts – 6 Years 	 <p>CLASSIC POWER DIRECT VENT</p> <ul style="list-style-type: none"> • .67 EF • Recovery: 38.4 to 40.4 GPH at a 90° F rise, based on model • Integrated self-diagnostic system • Long venting options up to 100 feet • Whisper quiet blower • 40 and 50-Gallon capacities • Up to 40,000 Btu/h • Enhanced-flow brass drain valve <p>Limited Warranty</p> <ul style="list-style-type: none"> • Tank and Parts – 6 Years 	 <p>CLASSIC DIRECT VENT</p> <ul style="list-style-type: none"> • .60 - .62 EF • Recovery: 30.3 to 36.4 GPH at a 90° F rise • Adjustable coaxial vent • Longer venting options • 40 and 50-Gallon capacities • Up to 36,000 Btu/h • Enhanced-flow brass drain valve <p>Limited Warranty</p> <ul style="list-style-type: none"> • Tank and Parts – 6 Years 	 <p>CLASSIC ULTRA LOW NOx</p> <ul style="list-style-type: none"> • .60 - .63 EF • Recovery: 30.3 to 40.4 GPH at a 90° F rise, based on model • Meets 10 ng/J NOx requirements • Features the Guardian System • 28, 38, 48 and 50-Gallon capacities • Up to 40,000 Btu/h • Enhanced-flow brass drain valve <p>Limited Warranty</p> <ul style="list-style-type: none"> • Tank and Parts – 6 Years
--	---	---	--	---	---	--	---	--

Residential Tank-Type Gas Continued

 <p>CLASSIC POWER VENT ULTRA LOW NOx</p> <ul style="list-style-type: none"> • .67 EF • Recovery: 36.4 to 38.4 GPH at a 90° F rise, based on model • Integrated self-diagnostic system • Long venting options up to 100 feet • Whisper quiet blower • 40 and 50-Gallon capacities • Up to 38,000 Btu/h • Enhanced-flow brass drain valve <p>Limited Warranty</p> <ul style="list-style-type: none"> • Tank and Parts – 6 Years 	 <p>CLASSIC ATMOSPHERIC FOR MANUFACTURED HOUSING</p> <ul style="list-style-type: none"> • .62 - .63 EF • Recovery: 30.3 to 34.3 GPH at a 90° F rise, based on model • CSA and HUD certified • Features the Guardian System • 29 and 40-Gallon capacities • Up to 34,000 Btu/h • Enhanced-flow brass drain valve <p>Limited Warranty</p> <ul style="list-style-type: none"> • Tank and Parts – 6 Years 	 <p>CLASSIC DIRECT VENT FOR MANUFACTURED HOUSING</p> <ul style="list-style-type: none"> • .62 - .63 EF • Recovery: 30.3 GPH at a 90° F rise • CSA and HUD certified • Combustion air comes from outside • 30 and 40-Gallon capacities • Up to 30,000 Btu/h • Enhanced-flow brass drain valve <p>Limited Warranty</p> <ul style="list-style-type: none"> • Tank and Parts – 6 Years 	 <p>CLASSIC DIRECT VENT CO-AXIAL FOR MANUFACTURED HOUSING</p> <ul style="list-style-type: none"> • .60 - .62 EF • Recovery: 30.3 to 36.4 GPH at a 90° F rise, based on model • CSA and HUD certified • 40 and 50-Gallon capacities • Up to 36,000 Btu/h • Enhanced-flow brass drain valve <p>Limited Warranty</p> <ul style="list-style-type: none"> • Tank and Parts – 6 Years
---	--	---	---

TANKLESS GAS

 <p>PRESTIGE HIGH EFFICIENCY CONDENSING</p> <ul style="list-style-type: none"> • Up to .94 EF • For 2-3 bathroom homes • Indoor direct vent and outdoor models • Vents with standard PVC • SCAQMD 1146.2 compliant • Recovery: 30.3 to 36.4 GPH at a 90° F rise, based on model • CSA and HUD certified • 40 and 50-Gallon capacities • Up to 36,000 Btu/h • Enhanced-flow brass drain valve <p>Limited Warranty</p> <ul style="list-style-type: none"> • Heat Exchanger – 12 Years Residential; 5 Years Commercial • Parts – 5 Years • In-Home Labor – 1 Year 	 <p>MID-EFFICIENCY</p> <ul style="list-style-type: none"> • .82 EF • For 2-3 bathroom homes • Indoor direct vent and outdoor models • SCAQMD 1146.2 compliant • 11,000 - 199,900 Btu/h max. • Temperature upgrade kits with temperature range of 85° F to 185° F available for commercial and hydronic applications <p>Limited Warranty</p> <ul style="list-style-type: none"> • Heat Exchanger – 12 Years Residential; 5 Years Commercial • Parts – 5 Years • In-Home Labor – 1 Year
--	---

SOLAR

 <p>SOLARAIDE™ HE WITH GAS ASSIST</p> <ul style="list-style-type: none"> • For use in residential closed loop solar water heating applications • Single tank solution • Double wall, high efficient solar heat exchanger • Fast recovery for high demand applications • Front solar connections for easy installations • 75-Gallon capacity • 75,100 Btu/h <p>Limited Warranty</p> <ul style="list-style-type: none"> • Tank and Parts – 6 Years

Units meet or exceed ANSI requirements and have been tested according to D.O.E. procedures. Units meet or exceed the energy efficiency requirements of NAECA, ASHRAE standard 90, ICC Code and all state energy efficiency performance criteria. Energy factor determined by U.S. Department of Energy (DOE) test procedures. See Residential Warranty Certificate for complete information.

