

Split System Heat Pumps and Air Handlers



® / TM 2026 Amana. Manufactured under license by Daikin Comfort Technologies North America, Inc., Limited warranty provided by the manufacturer.

**R32**

Premium Amana  
Brand Quality

Reliability and Performance  
You Can Trust

# A LEGACY OF COMFORT

The impeccable reputation of an American original

Amana Brand heating and cooling systems are a part of the enduring legacy of one of America's most recognized and respected brands. Originating eight decades ago in Amana, Iowa, the brand is synonymous with long-lasting, premium quality products — from home appliances to heating and air conditioning equipment. Chances are, you and generations before you have enjoyed the dependable performance and longevity the Amana Brand continues to deliver.

**1954**  
Amana Brand's version of the room air conditioner introduced.



**1967**  
Brought the first consumer microwave to the market. The Radarange® microwave.



**1997**  
Goodman Global, Inc. purchased Amana Brand's heating and AC business unit.



**2012**  
Daikin Industries, Ltd. acquired Goodman Global, Inc.



**1934**  
Amana Brand is founded by George Foerstner in Middle Amana, Iowa.



**1957**  
First bottom-freezer refrigerator.



**1986**  
Amana Brand invents revolutionary tubular heat exchanger for gas furnaces.

**2001**  
Goodman sold Amana Brand Heating & Air Conditioning to Maytag and has been exclusively licensed by Daikin Comfort Technologies ever since.



**2015**  
Daikin introduces its inverter technology into Amana Brand premium cooling products.

## An American original

Amana Brand's parent company has invested over \$400M in our state of the art production facility on the outskirts of Houston, TX. The Daikin Texas Technology Park is a sprawling campus covering more than 4 million sq. ft. with more than 4,000 personnel. The facility practices Daikin's philosophy of a full 360 degree focus to research and development, manufacturing quality and reliability, robust sales networks and extensive support infrastructure.

## Indoor heating and cooling systems from a home-grown brand

Today, Amana Brand heating and air conditioning is part of one of the leading manufacturers of energy efficient residential, commercial and industrial HVAC systems and refrigerants. The brand has access to global resources and support to ensure that outstanding technology, manufacturing processes, testing and product limited warranties\* are applied in all products.

\* Complete warranty details available from your local dealer or at [www.Amana-hac.com](http://www.Amana-hac.com).

### 2017

Daikin Texas Technology Park commenced operations just outside of Houston, Texas.



### 2022

Launch of the Amana Brand S-series side discharge system and Amana Brand smart thermostat.



### 2018

ComfortBridge technology is introduced and factory-installed in select gas furnaces and air handlers



### 2024

Complete redesign of Amana Brand units to support R-32 refrigerant.



# RELAX. IT'S AN AMANA BRAND.



The purchase of an indoor comfort system is not one to be taken lightly. However, it's one you can make with an air of confidence when you consider all that distinguishes the venerable Amana Brand.

## Experience the Next Level of Comfort with Amana Brand's R-32 HVAC Products!

Get ready to redefine your home comfort with Amana Brand's cutting-edge R-32 HVAC products, designed for today's homeowner. Leveraging generations of comfort and craftsmanship, our latest innovations blend our traditional quality with modern, innovative technology.

### Why Choose Amana Brand HVAC Products?

- **Innovative and Modern Comfort:** Every Amana Brand product is engineered to deliver ultimate comfort and efficiency. With sleek designs and cutting-edge technology, our HVAC systems integrate seamlessly into any home aesthetic.
- **Comfort with a Twist:** Our new R-32 products elevate your home to modern comfort standards. With a lower global warming potential (GWP) than traditional refrigerants, like R-410A, R-32 refrigerant has a lower impact on the environment making it a sustainable choice.
- **A Legacy of Craftsmanship:** For decades, Amana Brand has been synonymous with durability and reliability in home comfort. Our products are built with a heritage of quality that stands the test of time.
- **Reliability:** Your peace of mind is important to us. Amana Brand products are tested to ensure they deliver reliable performance year after year.
- **Impressive Limited Warranties:** Confidence in our products allows us to provide outstanding limited warranty\* protection. When you choose Amana Brand, you know your investment is backed.

\* Complete warranty details available from your local dealer or at [www.amana-hac.com](http://www.amana-hac.com)



## Trust the experts

Your local Amana Brand dealer plays a critical role in ensuring that your household's heating and air conditioning needs are met. That is why we are excited to work with an extensive network of local HVAC professionals that distinguish themselves based on their customer service, business standards and technical competency. Please ask your local Amana Brand dealer about why they can provide you with outstanding service and support, as well as industry leading Amana Brand products.



# AMANA BRAND HEAT PUMPS

## Amana Brand heat pumps distinguishing features\*

- ✓ Up to 21.0 SEER2 efficiency, up to 10.0 HSPF2
- ✓ ComfortAlert™ diagnostics
- ✓ Compressor sound cover
- ✓ High-efficiency scroll compressor
- ✓ Liquid line accumulator
- ✓ Crankcase heater
- ✓ Discharge muffler
- ✓ R-32 refrigerant
- ✓ Steel louver coil guard
- ✓ Select models feature Inverter compressor technology
- ✓ ComfortBridge™ or Amana Brand smart thermostat compatible – (select models)
- ✓ ... and more!

\* Not all features are available on all models

## Providing indoor heating and cooling comfort year-round

Enjoy year-round indoor comfort with Amana Brand heat pumps. These units provide both cooling and heating comfort from a single system. High-efficiency heat pumps can lower the cost of keeping a home completely comfortable all year compared to lower SEER2/HSPF2 units. The Amana Brand offers a full line of heat pump systems, so you are certain to find the perfect system to fit any budget. For the greatest energy-efficiency savings, select a heat pump system with the highest SEER2 and HSPF2 ratings.



# A REPUTATION THAT'S AS COMFORTING AS OUR PRODUCTS

While the energy-efficient performance and reliability of an Amana Brand Heat Pump will validate your purchase decision with dependable indoor comfort for years to come, it's the venerable Amana Brand name that lets you

be confident today. From our world-class engineering, comforting craftsmanship, and many other distinguishing factors, buying Amana Brand means you can be certain you made the right decision. Let's take a closer look...

## PREMIUM SPLIT-SYSTEM FEATURES\* - HEAT PUMP (ALZT7C / ALZS5B / ALZS4B / ALZS4N)

- 1 Refrigeration-grade premium copper tubing** and aluminum fin condenser coil configuration deliver outstanding heat transfer properties with R-32 refrigerant.
- 2 Heavy-gauge galvanized steel enclosure with sound-control top** – With advanced fan design, it provides dependable, quiet airflow across the condensing coil.
- 3 High-efficiency ECM fan motor** with advanced fan design moves air quickly and quietly.
- 4 High-density compressor sound blanket** – Acoustically engineered, high-density sound control blanket helps to reduce noise levels compared to without sound blankets for years of quiet comfort.
- 5 ComfortNet™ Communications System compatible** – Continuously monitors system performance for customized indoor comfort.
- 6 Commercial grade quality with factory-installed refrigerant management components** – Provides high reliability compared to units without these components.



\* Some features vary by model.

### DID YOU KNOW:

A typical air-source heat pump system is a split or two-part system that uses electricity as its power source. The system contains an outdoor unit that looks similar to an air conditioner and an indoor air handler. The heat pump

works in conjunction with the air handler to distribute the warm or cool air to interior spaces. This allows a heat pump to provide year-round indoor comfort - no matter the season!

# S-SERIES

## Introducing the Amana Brand S-series system – A new way of thinking about HVAC.

The Amana Brand S-series is a slim side discharge style system that provides a premium mid-efficiency solution at an affordable price. It connects to traditional ducted equipment with ease, and the slim profile provides a solution when traditional cube style options cannot.

### S-SERIES FEATURES OVERVIEW - HEAT PUMP (AZV6S / AZV7S)<sup>+</sup>

**1** Variable-speed DC fan

High efficiency and low sound levels

**2** Blue Fin corrosion coating

1000 Hours salt spray rated as standard.  
Hydrophilic coating to help keep the coil clean

**6** Intelligent defrost mode

The outdoor unit will enable this mode to help prevent frost/ice from building up in cold climate conditions. It will also help with longer heating operation time for additional comfort for occupants (compared to HVAC systems without this function). A selectable defrost backup heat option, when turned off, will lower power consumption during defrost

**3** 7mm Coil

High heat exchanger efficiency and compact casing design

**4** Inverter board cooled by refrigerant circuit<sup>1</sup>

Reduction of condenser fan pressure drop caused by heat sink used

**5** Swing compressor

High efficiency/low sound levels (as low as 45dBA in Quiet Mode)

**7** Advanced water-shedding drain pan

Engineered with multiple drain holes and channels providing effective water shedding



<sup>1</sup> Model specific, refer to product engineering manual for details.



<sup>+</sup> AZV7S and select AZV6S heat pump models meet the **ENERGY STAR**<sup>®</sup> cold climate requirements. Please refer to product engineering manuals for additional information or visit [www.energystar.gov](http://www.energystar.gov). Proper sizing and installation of equipment is critical to achieve optimal performance. Split system air conditioners and heat pumps must be matched with appropriate coil components to meet **ENERGY STAR**<sup>®</sup> criteria. Ask your contractor for details or visit [www.energystar.gov](http://www.energystar.gov).

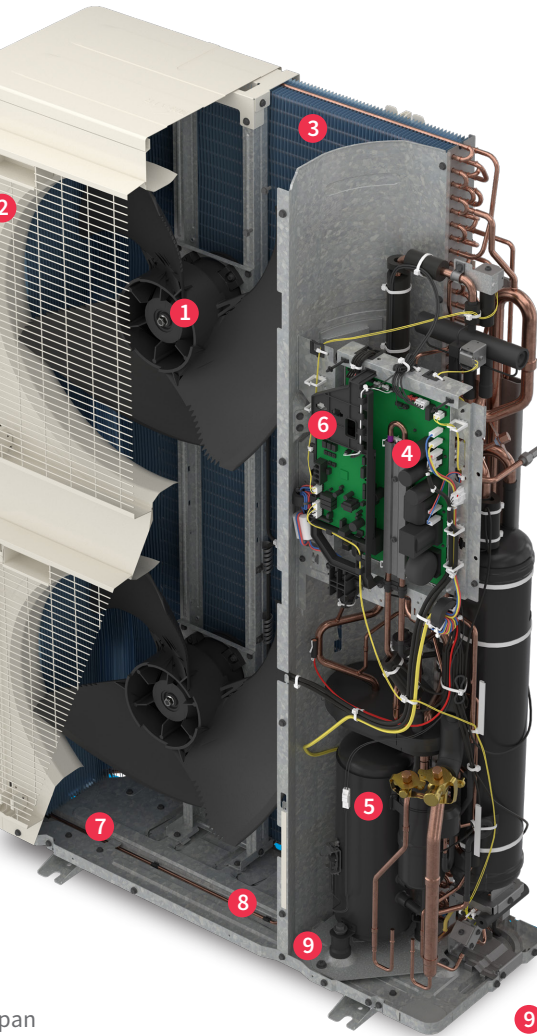
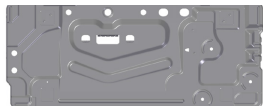
**S-SERIES ALL CLIMATE HEAT PUMP FEATURES OVERVIEW** (AZV9S, AZV7S (5-ton)<sup>+</sup>)

**1** Variable-Speed DC Fan  
High efficiency and low sound levels.

**2** Blue Fin Corrosion Coating  
1000 hours salt spray rated as standard. Hydrophilic coating to help keep the coil clean.

**6** Intelligent Defrost Mode.  
The outdoor unit will enable this mode to help prevent frost/ice from building up in cold climate conditions. It will also help with longer heating operation time for additional comfort for occupants (compared to HVAC systems without this function). A selectable defrost backup heat option, when turned off, will lower power consumption during defrost.

**7** Advanced water shedding drain pan  
Engineered with multiple drain holes and channels providing effective water shedding.



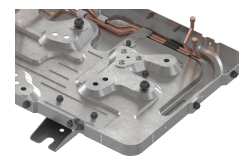
**3** 7mm Coil.  
High heat exchanger efficiency and compact casing design.

**4** Inverter Board Cooled by Refrigerant Circuit<sup>1</sup>  
Elimination of condenser fan pressure drop caused by heat sink used on previous generations.

**5** Daikin Swing Compressor.  
High efficiency.  
Low sound levels.



**8** Hot Gas bypass line  
During heating operation hot gas bypass helps prevent ice accumulation in the drain pan by facilitating its removal, ensuring effective ice suppression.



**9** Three-way installation provision  
Easy installation with three-way access to the inlet and outlet ports.



<sup>+</sup> AZV9S heat pump models meet the **ENERGY STAR**<sup>®</sup> cold climate requirements. Please refer to product engineering manuals for additional information or visit [www.energystar.gov](http://www.energystar.gov). Proper sizing and installation of equipment is critical to achieve optimal performance. Split system air conditioners and heat pumps must be matched with appropriate coil components to meet **ENERGY STAR**<sup>®</sup> criteria. Ask your contractor for details or visit [www.energystar.gov](http://www.energystar.gov).

<sup>1</sup> Model specific, refer to product engineering manual for details.

# THE AIR HANDLER— HVAC'S UNSUNG HERO

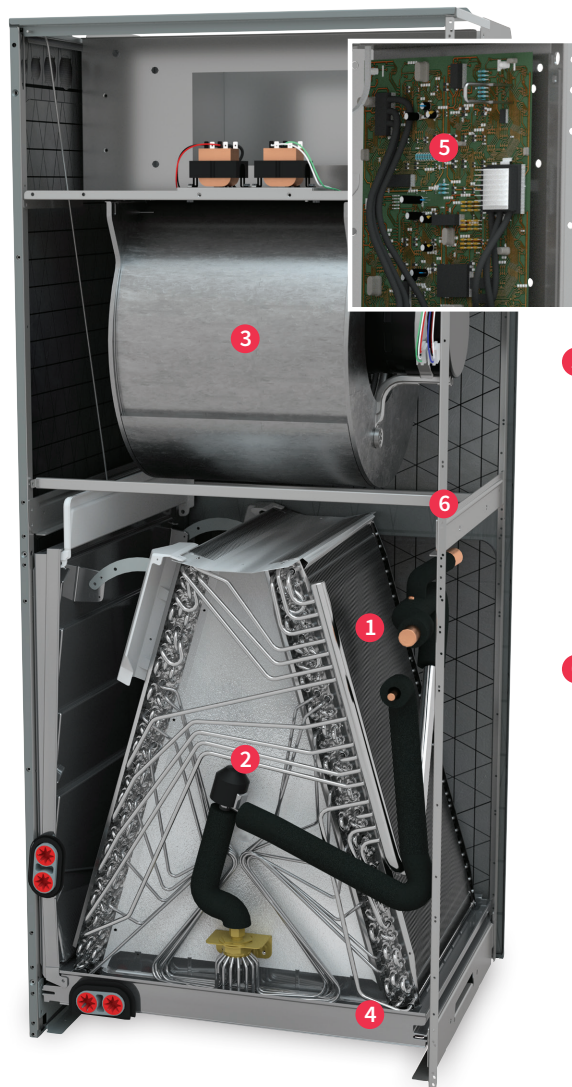
Often overlooked, an air handler is essential to your home's heat pump comfort system, and critical to maximizing its performance

and efficiency. Amana Brand air handlers are engineered to deliver premium performance and built to last and last and last.

## PREMIUM AIR HANDLER FEATURES\*

- 1 All-aluminum coils** – Enhanced durability in a single metal solution. Special grooved tubing provides efficient cooling and durability for long-lasting comfort.
- 2 Internal thermostatic/electronic expansion valve (TXV/EEV)** – Simplifies installation and controls refrigerant flow for efficient cooling (Models AHVE, AMVE, AMVT)
- 3 Variable-speed electrically commutated motor (ECM)** – Provides gradual startup and shutdown for unobtrusive operation with lower energy consumption (compared to a standard efficiency motor). Constant low-speed operation for outstanding filtration and comfort levels.

\* Some features vary by model.



- 4 High-temperature thermoplastic drain pan** – For service status indications without removing access panels. Easy component access reduces installation and service time.
- 5 Communicating compatible** – Allows use of specially designed full color LCD display thermostats designed to ensure your system is setup to operate at its peak efficiency level.
- 6 SmartFrame™ sub-structure** – Intelligent structural design both improves the Amana Brand air handler's lateral stability and affords a sturdy mounting framework for internal components. It also secures the foil-faced insulation covering the entire blower casing reducing operating noise and cabinet condensation that may occur during normal operation.

LEARN MORE AT  
[www.amana-hac.com](http://www.amana-hac.com)



**AMANA**<sup>®</sup>  
HEATING & AIR CONDITIONING

## Introducing the Amana Brand smart thermostat\*.

The Amana Brand smart thermostat is compatible with all Amana Brand communicating equipment. You and your family can control your indoor comfort with ease through the stylish capacitive touchscreen. You will appreciate the feature-rich design and intuitive functionality the Amana Brand smart thermostat enables the use of non-Amana Branded comfort solutions such as humidifiers, external dehumidifiers, or secondary heat source through

an auxiliary output. The Amana Brand smart thermostat is also compatible with the *SkyportHome* app for end-user control from your smart phone, as well as voice control compatibility with Amazon and Google smart devices (with Wi-Fi).

\* The Amana Brand smart thermostat is a ClimateTalk™ protocol device and is not compatible with *ComfortBridge™*. Amazon, Alexa, and all related logos are trademarks of Amazon.com, Inc. or its affiliates. Google, Google Assistant, and all related logos are trademarks of Google, or its affiliates.



### Connected Comfort

*Skyport* Cloud Services connects your HVAC system to your servicing contractor (via internet connection). You will enjoy peace of mind not only from verification of system installation†, but from a 24/7 – 365 connection to *SkyportCare*\*\* , the knowledge that your system performance is followed by Amana Brand, and your servicing contractor has access to system health alerts, performance insights, diagnostics, and even remote access to your system(s) settings – with your approval.

† *Quality Install* verifies system installation of Daikin, Amana Brand, and Goodman unitary inverter products

\*\* Requires continuous internet connection



### Direct control



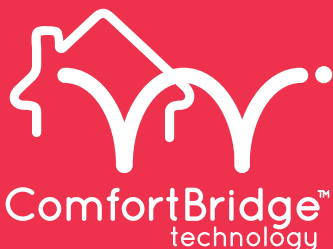
### App control



### Voice control



Bridging indoor comfort with smart technology



When your new air conditioner or heat pump is paired with a select Amana Brand gas furnace with *ComfortBridge™* technology, performance data from the split system is gathered and used to make automatic adjustments that may help reduce the amount of energy used to cool your home.

Always in pursuit of innovative ideas, our engineers have designed *ComfortBridge* technology to help your entire HVAC system cost-effectively operate at peak performance — providing consistent energy-efficient home comfort. *ComfortBridge* technology works with any single-stage thermostat to help create customized indoor comfort specifically for you and your family.

\* The Amana Brand smart thermostat is a ClimateTalk™ protocol device and is not compatible with *ComfortBridge™*.

# WHOLE HOME IAQ SOLUTIONS

Our complete family of Clean Comfort® products helps to improve indoor air quality.

Clean Comfort Indoor Air Essentials can help improve the quality and comfort of your home's indoor air. Components can be installed on virtually any brand of HVAC equipment in any home or installation.

LEARN MORE AT  
[www.cleancomfort.com](http://www.cleancomfort.com)



## Filtration

An effective air filter can help improve indoor air quality by filtering particles from the air. High-efficiency particulate air (HEPA) type air purifiers offer a bypass filtration. Media air cleaners are a more efficient and convenient way to clean the air than standard HEPA filters. Both options can help to remove dust, lint, and other particulates commonly found in the home.



## Humidification

Whole-home humidifiers add moisture to the conditioned air flowing through the home. Premium steam humidifiers help maintain comfortable humidity levels utilizing electrode and canister technology. Evaporative humidifiers use the warm furnace air to circulate evaporated moisture.



## Dehumidification

Whole-home dehumidifiers remove moisture from your home's air, helping to keep the indoor environment comfortable. The dehumidifier can work in conjunction with your central AC system or independently as needed, automatically maintaining suitable year-round humidity levels.



## Purification

Air purification systems are attached to the furnace or air handler and can help improve indoor air quality before the air is recirculated back into the home..



## Ventilation

Heat Recovery Ventilators (HRV) and Energy Recovery Ventilators (ERV) offer a simple, energy-efficient solution for ventilating well-insulated homes. HRV and ERV products keep you comfortable efficiently by using the stale indoor air exhaust to condition fresh incoming air.




## Zoning

A zoned residential HVAC system redirects air to specific areas of the home, allowing for the creation of customized temperature zones for increased comfort. Advanced, integrated controls monitor the system static pressure to reduce air noise and assures adequate system airflow.

**CLEAN COMFORT®**  
INDOOR AIR ESSENTIALS

**PURE. CLEAN. AIR.**

# PRODUCT SPECIFICATIONS

Heat Pumps							
MODELS	AZV9S	AZV7S	AZV6S	ALZT7C	ALZS5B	ALZS4B	ALZS4N
Style	Side Discharge	Side Discharge	Side Discharge	Cube	Cube	Cube	Cube
Refrigerant	R-32	R-32	R-32	R-32	R-32	R-32	R-32
10-Year Unit Replacement Limited Warranty*	●	●	●	●	●	N/A	N/A
10-Year Parts Limited Warranty*	●	●	●	●	●	●	●
One-Time Unit Replacement (Years 11-99) by ASURE†	●	●	●	●	●	N/A	N/A
One-Time Compressor Replacement (Years 11-99) by ASURE†	●	●	●	●	●	N/A	N/A
ComfortBridge™ Compatible	ComfortNet™ Only	ComfortNet™ Only	ComfortNet™ Only	●	N/A	N/A	N/A
M1 Rated	YES	YES	YES	YES	YES	YES	YES
SEER2	Up to 21.0	Up to 19.0	Up to 19.0	Up to 17.5	Up to 16	Up to 15.2	Up to 15.2
HSPF2	Up to 10.0	Up to 8.8	Up to 8.8	Up to 8.2	Up to 8.2	Up to 7.8	Up to 7.8
Compressor Type	High-Efficiency Variable-Speed Swing	High-Efficiency Variable-Speed Swing	High-Efficiency Variable-Speed Swing	High-Efficiency Two-Stage Scroll	High Efficiency Scroll	Energy Efficient Scroll	Energy Efficient
SmartShift® Defrost Technology	Intelligent	Intelligent	Intelligent	Time/Temp	Time/Temp	Time/Temp	Time/Temp
Factory-Installed Accumulator	●	●	●	●	●	●	●
Crankcase Heater	YES / Internal to the compressor	YES Internal to the compressor	YES Internal to the compressor	●	●	●	●
Compressor Sound Blanket	High Density	High Density	High Density	High Density	High Density	High Density	Select Models
Filter Drier	Factory Installed	Factory Installed	Factory Installed	Factory Installed	Factory Installed	Factory Installed	Factory Installed
Meets the DOE Cold Climate Heat Pump Challenge	YES	NO	NO	NO	NO	NO	NO
ENERGY STAR Certified**						NO	NO

\* Complete warranty available from your local dealer or at [www.amana-hac.com](http://www.amana-hac.com). Limited Warranties vary by product model. To receive 10-Year Unit Replacement Limited Warranty and/or 10-Year Parts Limited Warranty, online registration must be completed within 60 days of installation. The duration of warranty coverage may depend on the state in which you reside. Some states and provinces do not allow warranty coverage to be conditioned on registration. For a list of states and provinces that do not allow warranty coverage to be conditioned on registration, please visit [www.amana-hac.com/warranty-information](http://www.amana-hac.com/warranty-information) or, to request a paper copy of this information, please call us at 1-855-502-3903. Changes in law, regulations, or technology may result in an equivalent unit not being available. Other limitations and exclusions apply, refer to complete warranty details for full list of limitations and exclusions, as well as rights and obligations should an equivalent unit not be available.

† One-time Unit Replacement coverage and One-time Compressor Replacement coverage is available to the original homeowner for years 11-99 after the installation date through an ASURE Extended Service Plan. Complete details about the Extended Service Plan options available from your ASURE dealer.

\*\* Proper sizing and installation of equipment is critical to achieve optimal performance. Split system air conditioners and heat pumps must be matched with appropriate coil components to meet **ENERGY STAR** criteria. Ask your contractor for details or visit [www.energystar.gov](http://www.energystar.gov).

‡ Products that are recognized as the Most Efficient of **ENERGY STAR** in 2025 prevent greenhouse gas emissions by meeting rigorous energy efficiency performance levels set by the U.S. Environmental Protection Agency. EPA has not changed the requirement for **ENERGY STAR** Most Efficient for 2026 and hence do not have a mark of **ENERGY STAR** Most Efficient 2026. However, products noted as Most Efficient 2025 comply with EPA requirements in 2026.

Air Handlers								
MODELS	115V AHVE*03 / 230V AHVE*13 MULTI-POSITION	AMVT*13 MULTI-POSITION	AMST*13 MULTI-POSITION	AWST*13 WALL-MOUNT	ACST*13 CEILING-MOUNT	115V / 230V MBVK*H MODULAR BLOWER	MBVB MODULAR BLOWER	115V / 230V MBVK MODULAR BLOWER
Refrigerant Compatible	R-32	R-32	R-32	R-32	R-32	R-32	R-410A	R-410A
Furnace Integration Kit required for R-32 compatibility	N/A	N/A	N/A	N/A	N/A	N/A	●	●
10-Year Parts Limited Warranty*	●	●	●	●	●	●	●	●
ComfortBridge™ Compatible	ComfortNet™ Only**	●	N/A	N/A	N/A	ComfortNet™ Only**	●	ComfortNet™ Only**
ALL-ALUMINUM Evaporator Coil	●	●	●	●	●	N/A	N/A	N/A
Factory-Mounted TXVs	Factory-mounted EEV	●	●	●	●	N/A	N/A	N/A
Tonnage	2 to 5 Ton	2 to 5 Ton	2 to 5 Ton	1 ½ to 3 Ton	1 ½ to 2 ½ Ton	2 to 3 Ton	1 ½ to 5 Ton	2 to 5 Ton
Motor Type	Variable-Speed ECM	Variable-Speed ECM	9 TAP ECM	Multi-Speed ECM	Direct-Drive, Multi-Speed	Variable-Speed ECM	Variable-Speed ECM	Variable-Speed ECM
UL 60335 2-40 Compliant	●	●	●	●	●	●	●	●

\*\* Complete warranty available from your local dealer or at [www.amana-hac.com](http://www.amana-hac.com). To receive 10-Year Parts Limited Warranty, online registration must be completed within 60 days of installation. The duration of warranty coverage may depend on the state in which you reside. Some states and provinces do not allow warranty coverage to be conditioned on registration. For a list of states and provinces that do not allow warranty coverage to be conditioned on registration, please visit [www.amana-hac.com/warranty-information](http://www.amana-hac.com/warranty-information) or, to request a paper copy of this information, please call us at 1-855-502-3903. Other limitations and exclusions apply, refer to complete warranty details for full list of limitations and exclusions.

\*\* Compatible with Amana Brand S-series side discharge inverter (ASXS6 and ASZS6) outdoor unit. Modular blower MBVK models are the ONLY ones compatible with the Amana Brand S-series outdoors.

# ASURE EXTENDED SERVICE PLAN

## Asure EXTENDED SERVICE PLAN

### How Affordable is ASURE?

Isn't your comfort worth only pennies a day? ASURE eliminates the cost of unbudgeted system repairs. ASURE's got you covered today and for years into the future, no matter how much the cost of a service call may increase during that time.

### Worry-free coverage.

An ASURE Extended Service Plan gives you the peace of mind that you won't be faced with unexpected repair or part replacement costs for your heating and air conditioning system. We give you comfort, knowing you and your family won't have to endure any long periods without heating or cooling – you're covered!

The ASURE Extended Service Plan complements the standard product limited warranty\* by providing labor coverage and additional years of parts coverage, based on the plan selected. Your ASURE dealer can provide you with details on the different coverage options available.

### What does the plan cover?

The ASURE Extended Service Plan provides extended coverage for all functional parts of your newly-installed Amana Brand air conditioning and heating equipment. If a repair is needed, an authorized ASURE dealer will respond promptly and make repairs with quality Amana Brand specific parts.

\* Complete warranty details available from your local dealer or at [www.Amana-hac.com](http://www.Amana-hac.com).



Talk to your Dealer about  
Financing Options.



# REPAIR OR REPLACE?

With the help and support of your local Amana Brand dealer, you are preparing to make the decision whether it's best to repair or replace the old heating and/or cooling system. As you prepare to make this decision be certain to consider these options:

- Energy-efficient performance of a new unit can help lower utility bills
- Low Global Warming Potential (GWP) refrigerant
- Ideal indoor comfort levels of a new system with communicating capabilities
- Consistent indoor comfort with a new variable-speed (inverter) system
- Initial costs associated with repairing your current system
- Cost of purchasing a new heating and cooling system

Please find the Repair vs. Replace Worksheet below helpful through your decision-making process with your local Amana Brand dealer.

## Repair vs. Replace Worksheet

CURRENT SYSTEM				
	AIR CONDITIONER	HEAT PUMP	GAS FURNACE OR AIR HANDLER	INDOOR COIL
Brand Name				
Age of Unit				
Warranty Coverage				
Efficiency Rating				
Refrigerant Type				
Type of Thermostat				
Estimated Life Expectancy				
Estimated Monthly Cost to Operate				
Annual Maintenance Cost Estimate				
NEW SYSTEM				
	AIR CONDITIONER	HEAT PUMP	GAS FURNACE OR AIR HANDLER	INDOOR COIL
Brand Name				
Age of Unit				
Warranty Coverage				
Efficiency Rating				
Refrigerant Type				
Type of Thermostat				
Estimated Life Expectancy				
Estimated Monthly Cost to Operate				
Annual Maintenance Cost Estimate				



Amana Brand products average 4.6 out of 5 stars in homeowner satisfaction with thousands of reviews captured on Amana Brand Heating and Air Conditioning products\*.

\* Collected reviews from Bazaarvoice

Don't just take our word for it...

See the reviews on  
[www.amana-hac.com/reviews](http://www.amana-hac.com/reviews).

## AMANA BRAND IS SOCIAL!



[www.amana-hac.com](http://www.amana-hac.com)

### Additional information

Before purchasing this appliance, read important information about its estimated annual energy consumption, yearly operating cost, or energy efficiency rating that is available from your retailer.

#### WARNINGS:

Always use a licensed installer or contractor to install this product. Do not try to install the product yourself. Improper installation can result in water or refrigerant leakage, electrical shock, fire, or explosion.

Use only those parts and accessories supplied or specified by Amana Brand. Ask a licensed contractor to install those parts and accessories. Use of unauthorized parts and accessories or improper installation of parts and accessories can result in water or refrigerant leakage, electrical shock, fire, or explosion.

Read the Product Manual carefully before using this product. The Product Manuals provide important safety instructions and warnings. Be sure to follow these instructions and warnings.

For any inquiries, contact your local Amana Brand sales office.

All trademarks are the property of their respective owners.

**R32**