



## Energy-Efficient Packaged Heat Pumps

UP TO 16 SEER | Up to 8.2 HSPF

APH16H | APH16M

Rest Easy.  
It's an Amana® brand.



Amana is a registered trademark of Maytag Corporation or its related companies and is used under license. All rights reserved.

Premium Amana®  
Brand Quality

All-Aluminum  
Evaporator Coil



# Energy-Efficient, Variable-Speed Packaged Heat Pump

APH16H | APH16M UP TO 16 SEER | Up to 8.2 HSPF

Features to be proud of:



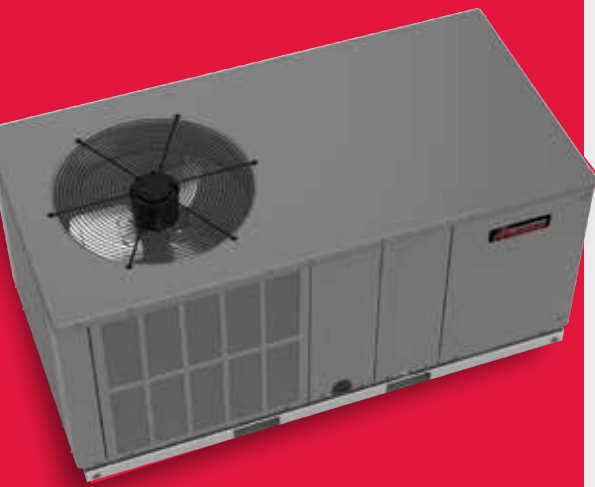
## Energy Efficiency

SEER or Seasonal Energy Efficiency Rating is a measure designated by the U.S. Department of Energy and gives you a good idea of the performance you can expect from air conditioners and heat pumps. At an up to 16-SEER cooling rating, the Amana brand APH16M Packaged Heat Pump can deliver up to 8.2 HSPF (Heating Seasonal Performance Factor). When you choose an energy efficient Amana brand heat pump, year-round indoor comfort is combined with year-round savings.



## Quiet Comfort

You can be assured that your Amana brand packaged heat pump will provide you with quiet operation. To minimize operating sounds, we've combined quiet scroll compressor technology with a high-density foam cover plus a fully-insulated blower compartment to provide unobtrusive performance.



Heating & Air Conditioning  
**Amana**

## An enhanced level of comfort before and after your purchase

When it's time for a new indoor comfort system, you shouldn't have to sweat the decision of which manufacturer to choose. The legendary Amana® brand, trusted by generations for its performance and reliability, gives you one less thing to worry about. Choose an Amana brand APH16H or APH16M Packaged Heat Pump with confidence, knowing you're getting world-class engineering, good ol' American craftsmanship and the finest materials from around the world.

### *Efficiency and longevity make this the total package*

When you choose the energy-efficient Amana brand APH16H or APH16M Packaged Heat Pump, you'll enjoy years of cost-effective, worry-free indoor comfort from a single, self-contained unit. Featuring quick and easy installation, as well as the protection of two limited warranties\*, it can deliver heating and cooling capacity from two to four tons, a Seasonal Energy Efficiency Ratio (SEER) of up to 16 and a Heating Seasonal Performance Factor (HSPF) of up to 8.2.

### *You'd be hard pressed to find a better compressor*

This packaged heat pump's most important component in terms of cooling efficiency and performance, is its compressor—the heart of the system's operation during summer months. These Amana brand Packaged Heat Pumps features an energy-efficient scroll compressor, which is designed with fewer moving parts that result in lower energy use compared to units with reciprocating compressors.

### *The security of the Amana brand's amazing limited warranties\**

To truly seal the deal, the Amana brand APH16H and APH16M Packaged Heat Pumps are backed by one of the best warranties\* in the industry. This unit features a Lifetime Compressor Limited Warranty\* and a 10-Year Parts Limited Warranty\*. The longevity of premium Amana brand products combined with this excellent warranty\* coverage offer you a level of purchase protection that's the stuff of legend.

## LIMITED WARRANTY\* PROTECTION



\*Complete warranty details available from your local dealer or at [www.amana-hac.com](http://www.amana-hac.com). To receive the Lifetime Compressor Limited Warranty (good for as long as you own your home) and 10-Year Parts Limited Warranty, online registration must be completed within 60 days of installation. Online registration is not required in California or Quebec.

## EXTENDED SERVICE PLANS AVAILABLE

For even greater peace of mind, ask your dealer or visit our website at [www.amana-hac.com](http://www.amana-hac.com) for more details about Asure™, an affordable Parts and/or Labor Extended Service Plan for your entire Amana® brand HVAC system.

The Amana<sup>®</sup> brand APH16H and APH16M Packaged Heat Pump advantages:

- ✔ Energy-Efficient Cooling Capacity – Refrigeration grade premium copper tubing and aluminum fin condenser coil configuration delivers outstanding heat transfer properties.
- ✔ All-Aluminum Evaporator Coil – A single metal solution that is designed for enhanced durability and performance.
- ✔ Variable-Speed ECM Blower Motor – Provides quiet system startup and shutdown with highly-efficient performance.
- ✔ High-Efficiency Compressor – Compressor will provide years of reliable cooling comfort. Uses chlorine-free R-410A refrigerant.
- ✔ Refrigeration-Grade Premium Copper Tubing and Aluminum Fin Condenser Coil Configuration – Delivers outstanding heat transfer properties with R-410A refrigerant.
- ✔ Self-Contained Packaged Unit – Designed for multi-position installation.

UP TO  
**16** SEER  
 UP TO  
**8.2** HSPF

Model	SEER	HSPF	EER	Capacity	Installation Options
APH16H	Up to 16	8.0	Up to 13	2-5 Ton	Dedicated Horizontal
APH16M	Up to 16	Up to 8.2	12	2-5 Ton	Multi-Position

A legacy of comfort

The impeccable reputation of an American original

Amana brand heating and cooling systems are a part of the enduring legacy of one of America’s most recognized and respected brands. Originating eight decades ago in Amana, Iowa, the brand is synonymous with long-lasting, premium quality products – from home appliances to heating and air conditioning equipment. Chances are, you and generations before you have enjoyed the dependable performance and longevity the Amana brand continues to deliver.



Ask your dealer for full details.

ComfortHome™  
 automation 

**Practical Home Automation**

The ComfortHome™ suite of automation products provide solutions that allow you to be notified of issues instantly and provides you with the solutions that notify you of issues instantly and enable you to respond from anywhere with remote connectivity to your home's vital systems.



[www.comforthomeconnect.com](http://www.comforthomeconnect.com)

**CLEAN COMFORT**  
 INDOOR AIR ESSENTIALS

**Pure. Clean. Air.**

Indoor comfort in your home is about more than just adjusting the temperature on the thermostat. Many homeowners overlook the need for necessary components and systems that can improve the indoor air you breathe.



[www.cleanccomfort.com](http://www.cleanccomfort.com)

**AMANA IS SOCIAL!**



Like us on **Facebook!**  
[facebook.com/AmanaHVAC](https://facebook.com/AmanaHVAC)

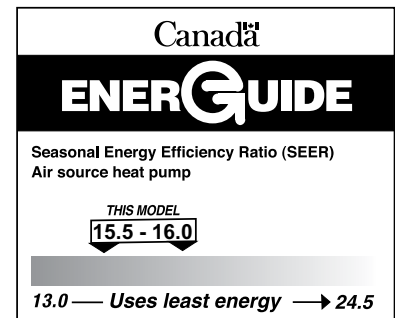


Follow us on **Twitter!**  
[twitter.com/Amana\\_HVAC](https://twitter.com/Amana_HVAC)

Amana® brand products average **4.7 out of 5** stars in homeowner satisfaction with thousands of reviews captured on Amana brand Heating and Air Conditioning products.

**Don't just take our word for it...**

See the reviews on  
[www.amana-hac.com/reviews](http://www.amana-hac.com/reviews).



*Additional information*

Before purchasing this appliance, read important information about its estimated annual energy consumption, yearly operating cost, or energy efficiency rating that is available from your retailer.

[www.amana-hac.com](http://www.amana-hac.com)