



CAST-ALUMINUM CONDENSING WATER BOILER

Q90 FLOOR STANDING



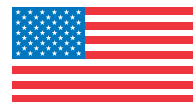
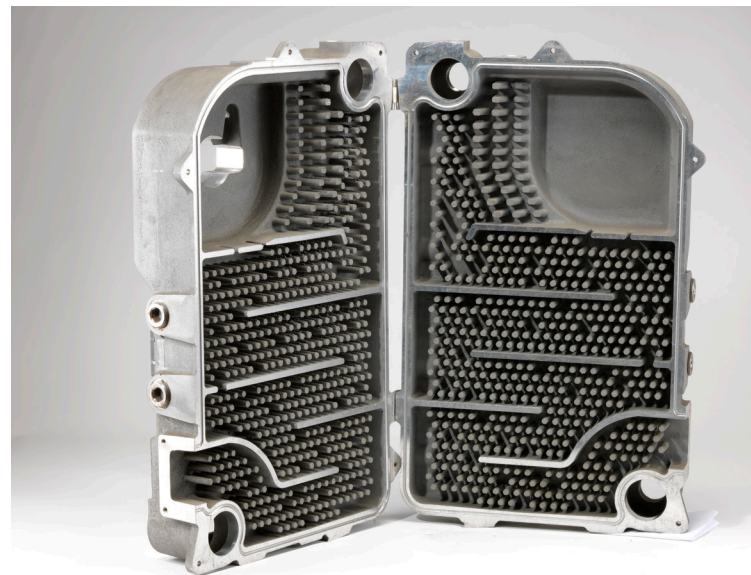
90% AFUE EFFICIENCY

The Q90 is a high efficiency gas-fired condensing water boiler with a small compact design ideal for low clearance/limited space applications. It features a high efficiency cast aluminum heat exchanger with low pressure drop, hot surface ignition (HSI) boiler control and a combination high limit/low water cut off control.

The stainless steel premix burner provides corrosion resistance and longevity. The Q90 is a sealed combustion boiler and includes an induced draft blower with adjustable exhaust, (front, right side, or rear.)

Q90 FEATURES

- 3 Sizes Available, 50 - 100 MBH
- High Efficiency Cast Aluminum Heat Exchanger
90% AFUE, ENERGY STAR® Certified
- Fuel Smart Hydrostat Control:
 - Temperature Limit
 - Low Water Cut-Off (LWCO)
 - Boiler Reset
- Compact Design
- Stainless Steel Premix Burner
- Induced Draft Blower
- Warranty Coverage
 - FREE 2-Year Parts & Labor Limited Warranty*
 - 15 Year Limited Heat Exchanger Warranty



*Unit must be registered within 60 days from the date of original installation. All terms of Trinity Extended Service Agreement apply.

RATINGS										
MODEL	AHRI CERTIFIED RATINGS				DIMENSIONS					
	Input MBH ⁽¹⁾	Heating Capacity MBH ⁽¹⁾⁽²⁾	Net Water MBH ⁽¹⁾⁽³⁾	Efficiency AFUE ⁽²⁾	Vent Pipe Size ⁽⁴⁾	Water Content Gallons	- A - Width	- B - Height	- C - Depth	Ship Weight
Q90-50	50	45	39	90%	2" or 3"	2.6	17-3/4"	36-1/4"	17-3/8"	220 lbs.
Q90-75	75	68	59	90%	2" or 3"	2.6	17-3/4"	36-1/4"	17-3/8"	220 lbs.
Q90-100	100	90	78	90%	2" or 3"	2.6	17-3/4"	36-1/4"	17-3/8"	220 lbs.

- (1) 1000 Btu/hr (British Thermal Units Per Hour)
- (2) Heating capacity and AFUE (Annual Fuel Utilization Efficiency) are based on DOE (Department of Energy) test procedures.
- (3) Net AHRI Ratings based on piping and pickup allowance or 1.15. Contact Technical Support before selecting boiler for installations having unusual piping and pickup requirements such as intermittent system operation, extensive piping systems, etc.
- (4) Refer to IOM and vent pipe manufacturer's instructions for equivalent lengths and approved venting materials.

CONNECTIONS

Water Return & Supply	1-1/4" NPT
Gas Inlet	1/2" NPT
Condensate Drain	1/2" NPT

ELECTRICAL

120 V ac, 60 hertz, 1 phase, less than 12 amps (15 amp circuit recommended)
--

STANDARD EQUIPMENT

Boiler Control Module: HSI Integrated Boiler Control.
 Combination Hydrolevel High Limit and LWCO with boiler water temperature reset feature.
 Heat Exchanger: Cast Aluminum Heat Exchanger
 Combustion: Stainless Steel Premix Burner
 Induced Draft Blower with adjustable exhaust (front, right side, rear)
 Induced Motor Assembly includes 5' schedule 80, 2" CPVC and CPVC Tee
 Electrical: Junction Box, Transformer and Wiring Harness
 Other: Temperature/Pressure Gauge, 30 PSI Safety Relief Valve, Pressure Switch(es), Low Profile Condensate Trap, Air Vent and Leveling Legs.

OPTIONS

Natural Gas or Propane

