

## Inverter Driven Heat Pump

## 12,000 BTU Single Zone Compact Cassette

Job Name \_\_\_\_\_  
 Location \_\_\_\_\_  
 Engineer \_\_\_\_\_  
 Submitted To \_\_\_\_\_  
 Submitted By \_\_\_\_\_  
 Reference \_\_\_\_\_

Date \_\_\_\_\_  
 Approval \_\_\_\_\_  
 Construction \_\_\_\_\_  
 Unit No \_\_\_\_\_  
 Drawing No \_\_\_\_\_

### PRODUCT FEATURES

24 hr. Timer/Weekly Timer  
 Auto louver: Up/Down  
 Auto Mode  
 Auto Changeover  
 Daisy Chain Compatible  
 Built-in Condensate Pump  
 Auto Restart  
 Economy Mode  
 Auto Fan Mode



MODEL NUMBERS			
Indoor Unit		ACUH12LUAS1	
Outdoor Unit		AOUH12LUAS1	
System		12LUAS1C	
EFFICIENCIES			
SEER		22.1	
SEER 2		23	
EER		12.8	
EER 2		12.8	
HSPF		12.2	
HSPF 2 (IV) / HSPF 2 (V)		11.3/9.1	
COP	kW/kW		3.26
COP	Btu/hW		11.1
COP2	kW/kW		3.26
COP2	Btu/hW		11.1
OUTDOOR TEMPERATURE OPERATION RANGE			
Cooling	*F(*C)	14 to 115 (-10 to 46)	
Heating*		*-5 to 75 (-21 to 24)	
CAPACITIES			
Cooling	Rated	Btu/h	12000
	Min.—Max.		3,100—13,600
Heating	Rated		16000
	Min.—Max.		3,100—19,400
LINESET REQUIREMENTS			
Connection Method		Flare	
Liquid	in (mm)	Ø 1/4 (Ø 6.35)	
Gas		Ø 3/8 (Ø 9.52)	
Pre-charge length	ft (m)	49 (15)	
Minimum Length		16 (5)	
Max. length		66 (20)	
Max. height difference		49 (15)	
INDOOR DIMENSIONS & WEIGHT			
Net (H × W × D)	in (mm)	9-5/8 × 22-7/16 × 22-7/16 (245 × 570 × 570)	
Gross (H × W × D)		10-7/16 × 28-3/4 × 24-5/8 (265 × 730 × 625)	
Net Weight	lb (kg)	33 (15)	
Gross Weight		42 (19)	
OUTDOOR DIMENSIONS & WEIGHT			
Net (H × W × D)	in (mm)	24-7/8 × 31-7/16 × 11-7/16 (632 × 799 × 290)	
Gross (H × W × D)		27-1/4 × 37 × 14-3/4 (692 × 940 × 375)	
Net Weight	lb (kg)	84 (38)	
Gross Weight		95 (43)	

\* System continues to operate below rated outdoor operation temperature range, subject to varying conditions. System has no low temperature cut out. Capacity is not tested outside of the rated temperature range.

### Warranty Information



7 Year Compressor, 5 Year Parts out-of-the-box Warranty



10 Year Compressor, 10 Year Parts Warranty when registered within 60 days of installation in a residence



12 Year Compressor, 12 Year Parts Warranty when registered within 60 days of installation in a residence, and installed by a Fujitsu Elite contractor

### ACCESSORIES

UTY-RNRUZ*	Wired Remote Controller
UTY-RSRY	Simple Remote Controller
UTY-RHRY	Simple Remote Controller
UTY-LNTU	Wireless Remote Controller
UTY-XWZXZG	External Connect Kit
UTR-YDZB	Air Outlet Shutter Plate
UTZ-VXAA	Fresh Air Intake Kit
UTZ-KXGC	Insulation for High Humidity
UTY-XCSX	External Input and Output PCB
UTZ-GXEA	External Input and Output PCB Box
UTY-TFSXZ2	WLAN Adapter
UTY-VMSX	Modbus Converter
UTG-CCGFGA	Cassette Grille
UTY-TTRXZ1	Thermostat Converter
UTY-VTGX	Network Converter
UTY-VTGXV	Network Converter (AC power supply)
UTY-TERX	External Switch Controller



This system combination is Energy Star qualified

Due to continuous product improvements, specifications are subject to change without notice. Please log in to the Fujitsu Portal for the most up-to-date documentation <https://connect.fujitsugeneral.com>

Effective Date: 05/07/2024

Fujitsu General America, Inc. • 342 Changebridge Rd, Pine Brook, NJ 07058 • Toll Free: (888) 888-3424 • [www.fujitsugeneral.com](http://www.fujitsugeneral.com)

## Inverter Driven Heat Pump

## 12,000 BTU Single Zone Compact Cassette

### FAN DATA

Indoor Unit Airflow rate	Cooling	HIGH	CFM (m3/h)	359 (610)
		MED		312 (530)
		LOW		277 (470)
		QUIET		241 (410)
	Heating	HIGH		359 (610)
		MED		312 (530)
		LOW		277 (470)
		QUIET		241 (410)
Outdoor Unit Airflow rate	Cooling			1,171 (1,990)
	Heating			1,089 (1,850)

### SOUND PRESSURE

Indoor Unit	Cooling	HIGH	dB (A)	37
		MED		33
		LOW		31
		QUIET		28
	Heating	HIGH		37
		MED		33
		LOW		31
		QUIET		28
Outdoor Unit	Cooling			48
	Heating			49

### REFRIGERANT

Type	R410A		
Charge	lb oz	2lbs.10oz.	
	g	1200	
Oil Type	RB68		

### ELECTRICAL SPECIFICATIONS

Voltage/Frequency/Phase		208/230 V ~ 60 Hz		
Available Voltage Range		187-253 V		
Current	Cooling	Rated	A	4.2
	Heating	Rated		6.4
Maximum Operating Current	Cooling			9.8
	Heating			11.3
Starting current				6.4
MCA				11.3
Maximum Circuit Breaker				15
Input Power	Cooling	Rated	kW	0.94
		Max.		1.79
	Heating	Rated		1.44
		Max.		1.79
Power Factor	Cooling		%	97.3
	Heating			97.8

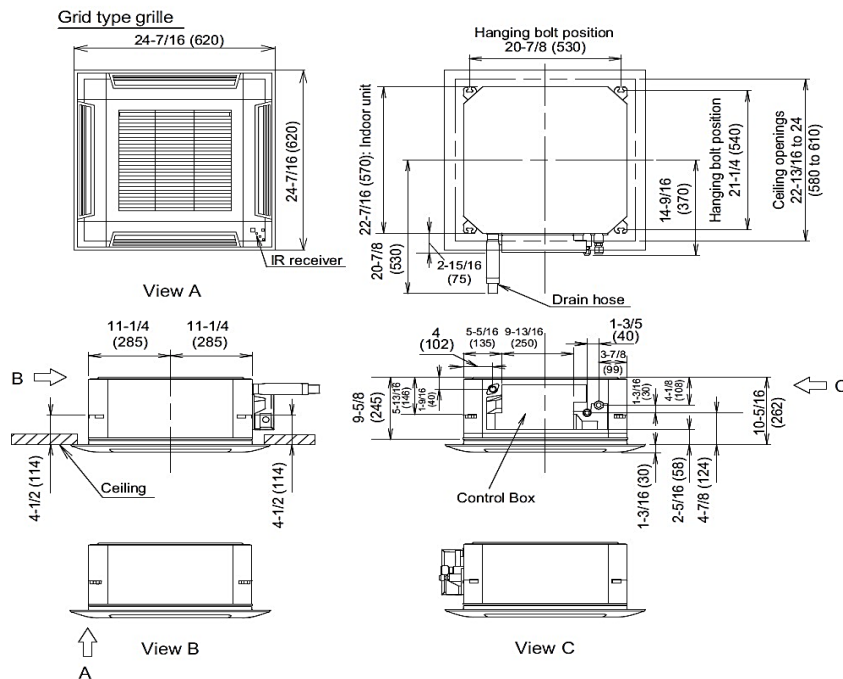
### OTHER

Moisture Removal		pints/h (L/h)	2.5 (1.2)
Energy Star			Yes
Drain hose	Material		HARD PVC
	Tip diameter	in (mm)	Ø13/16 (Ø20.7) [I.D.] Ø1-1/16 (Ø26.6) [O.D.]
Operation Range	Cooling	°F (°C)	64 to 90 (18 to 32)
		%RH	80 or less
	Heating	°F (°C)	60 to 86 (16 to 30)

### DIMENSIONS:

Units: In. (mm)

### Indoor Unit



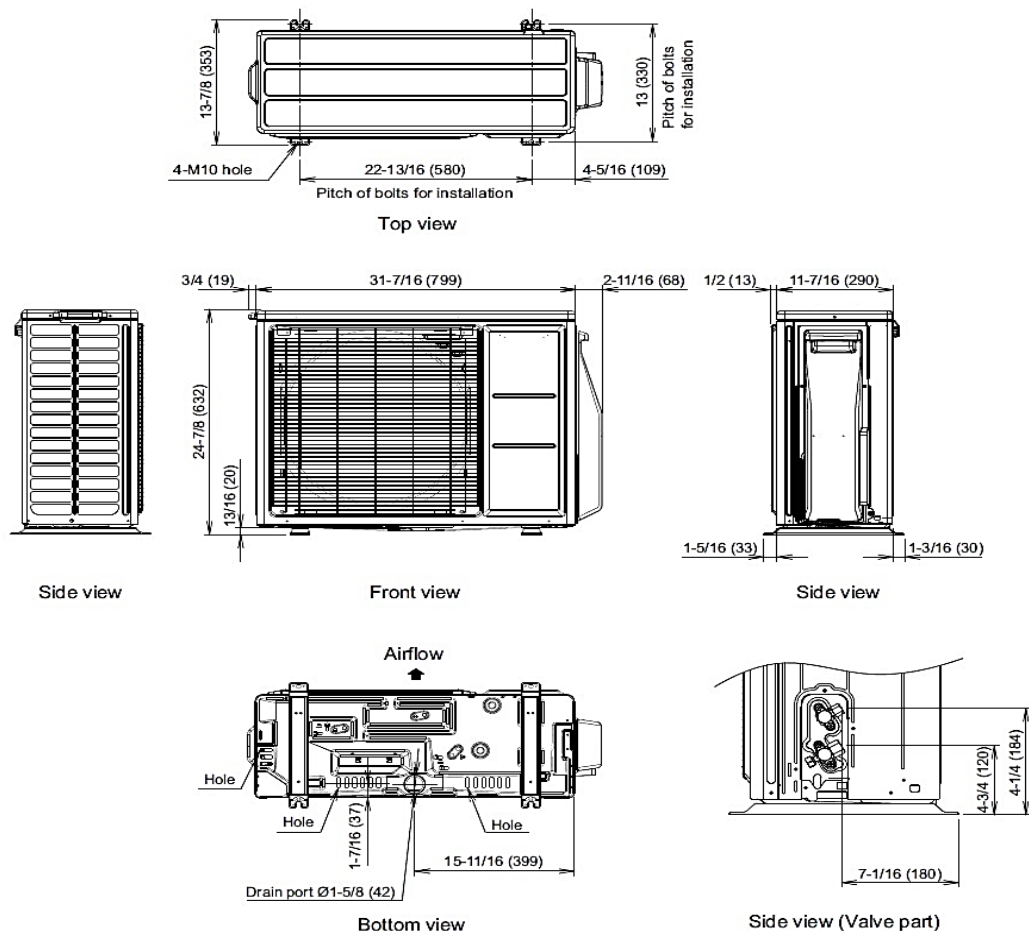
## Inverter Driven Heat Pump

## 12,000 BTU Single Zone Compact Cassette

## DIMENSIONS

Units: In. (mm)

## Outdoor Unit



The Fujitsu logo is a worldwide trademark of Fujitsu General Limited. The Airstage logo and name is a worldwide trademark of Fujitsu General Limited and is a registered trademark in Japan, the USA and other countries or areas. Copyright 2024 Fujitsu General America, Inc. Fujitsu's products are subject to continuous improvements. Fujitsu reserves the right to modify product design, specifications and information in this brochure without notice and without incurring any obligations.

Note: Specifications are based on the following conditions:  
Cooling: Indoor temperature of 80°F (26.7°C) DB/67°F (19.4°C) WB, and outdoor temperature of 95°F (35°C) DB/75°F (23.9°C) WB. Heating: Indoor temperature of 70°F (21.1°C) DB/60°F (15.6°C) WB, and outdoor temperature of 47°F (8.3°C) DB/43°F (6.1°C) WB. Pipe length: 25ft. (7.5m), Height difference: 0ft. (0m) (Outdoor unit – indoor unit).