



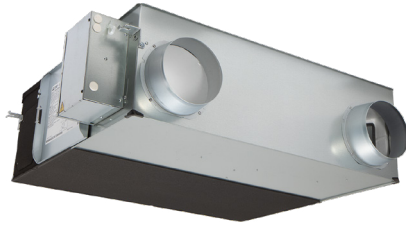
# LGH-F470RVX2-E ENERGY RECOVERY VENTILATION



Job Name:

System Reference:

Date:



## GENERAL FEATURES

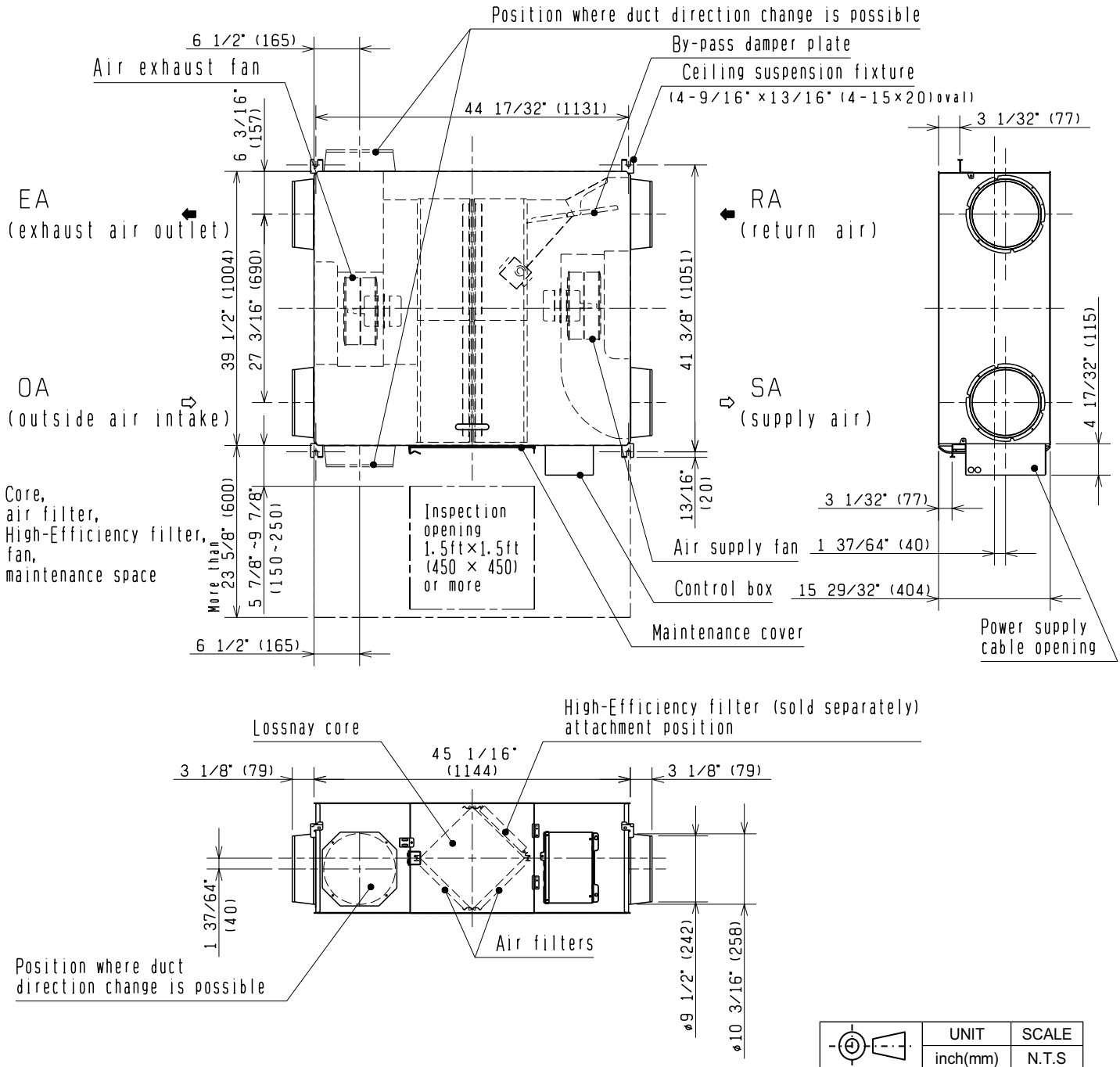
- Lossnay® cross-flow energy recovery core
- Minimal cross contamination between entering and leaving air streams
- Stand-alone remote controller (PZ-62DR-EA)
- M-NET Connectivity
- External input bypass damper control
- Stand alone or interlocks connects with all Mitsubishi Electric products
- Four fan speeds
- High efficiency DC Motor
- Standard MERV 7 non-woven fabric filter, washable fiber
- Optional high-efficiency MERV 14 and MERV 16 filters

Specifications		System
Unit Type		LGH-F470RVX2-E
Capacity	CFM [m³/h]	470 [799]
Power source	Voltage, Phase, Hertz	208/230V, 1-phase, 60 Hz
Power Consumption	kW	0.22 - 0.425
Current	A	0.047 - 0.11
Starting Current	A	6.1
MCA	A	5.1
Maximum Overcurrent Protection (MOCP)	A	15
Fan	Air Volume	CFM [m³/h]
	External Static pressure	in.WG
	Temperature	%
Exchange Efficiency	Enthalpy Cooling	%
	Enthalpy Heating	%
External Finish		Galvanized steel sheet
External Dimensions	In. [mm]	41-3/8 x 51-5/16 x 15-29/32 [1,051 x 1,302 x 404]
Net weight	Lbs [kg]	110 [50]
Energy Transfer Mechanism		Lossnay® Core
Heat Exchange Material		Partition, spacing plate-cellulose fiber membrane
Heat Exchange System		Air-to-air total heat (sensible heat + latent heat) exchange, no moving parts
Blower Type		9-5/8 In. diameter centrifugal fan
Motor Type		EC Motor
Entering Air Temperature Operation Range	°F [°C]	14 to 104 [-10 to 40]
Sound pressure level	dB(A)	20.0–26.0–34.0–40.0

ACCESSORIES: LGH-F470RVX2-E

Wired Remote Controller	Lossnay® ERV Remote Controller	PZ-62DR-EA
Control Interface	Signal Output Terminal	PZ-4GS-E
Duct Accessories	Duct Silencer	PZ-250SS-E
Filter	MERV 14 Filter	PZ-80RFP-E
	MERV 16 Filter	PZ-80RFP2-E
	MERV 7 Filter (Included)	PZ-80RF9-E
Remote Sensor	CO2 Sensor, Built-In	PZ-70CSB-E
	CO2 Sensor, Wall Mount	PZ-70CSW-E

# DIMENSIONS: LGH-F470RVX2-E



1340 Satellite Boulevard Suwanee, GA 30024  
Toll Free: 800-433-4822 www.mehvac.com

FORM# LGH-F470RVX2-E - 202304

