

NPN Series

**KD navien®**

# **NPN-Universal & NPN-Exterior** Premium Tankless Water Heaters

Navien  
innovation  
now in  
non-condensing  
tankless



NaviLink™ Wi-Fi remote control system.  
Available as an accessory for all NPN models.

**N O N - C O N D E N S I N G   T A N K L E S S   R E I N V E N T E D**

# NPN series

## Navien Premium Non-condensing tankless water heaters



**NPN-Universal**  
Indoor/outdoor



**NPN-Exterior**  
Outdoor only

No one has put more  
non-condensing  
ingenuity into  
tankless than Navien

The new Navien NPN series is the first and only non-condensing tankless water heater series that offers a durable stainless-steel heat exchanger, choice of indoor or outdoor operation in one unit and a patented stainless steel burner design, all with Navien's dedication to advanced engineering, elegant design and exceptional product support.

- Patented NaviTech™ stainless steel heat exchanger and stainless steel burner with lean/rich stable cleaner burning technology
- 0.81 UEF for all models
- Choice of universal indoor/outdoor or outdoor only operation
- Strong residential and commercial warranties
- NaviVent™ concentric 3" x 5" venting
- Units available in either NG or LP

**NAVITECH™**  
STAINLESS STEEL  
HX AND BURNER

**PREMIUM  
INTEGRATED  
CONTROL**

**0.81 UEF**

**98°-140°**  
TEMP RANGE

**9.5 GPM**  
@ 35° TEMP RISE

**RESIDENTIAL &  
COMMERCIAL**

**CASCADE  
CAPABLE**

# MORE premium features and benefits

## Patented NaviTech™ technology

### Exclusive stainless steel heat exchanger.

The NPN series is the first and only non-condensing tankless water heater with a stainless steel heat exchanger to deliver unmatched durability and performance.

### Lean/rich stainless steel burner

designed and manufactured by Navien to burn gas at higher efficiency than any other system on the market.

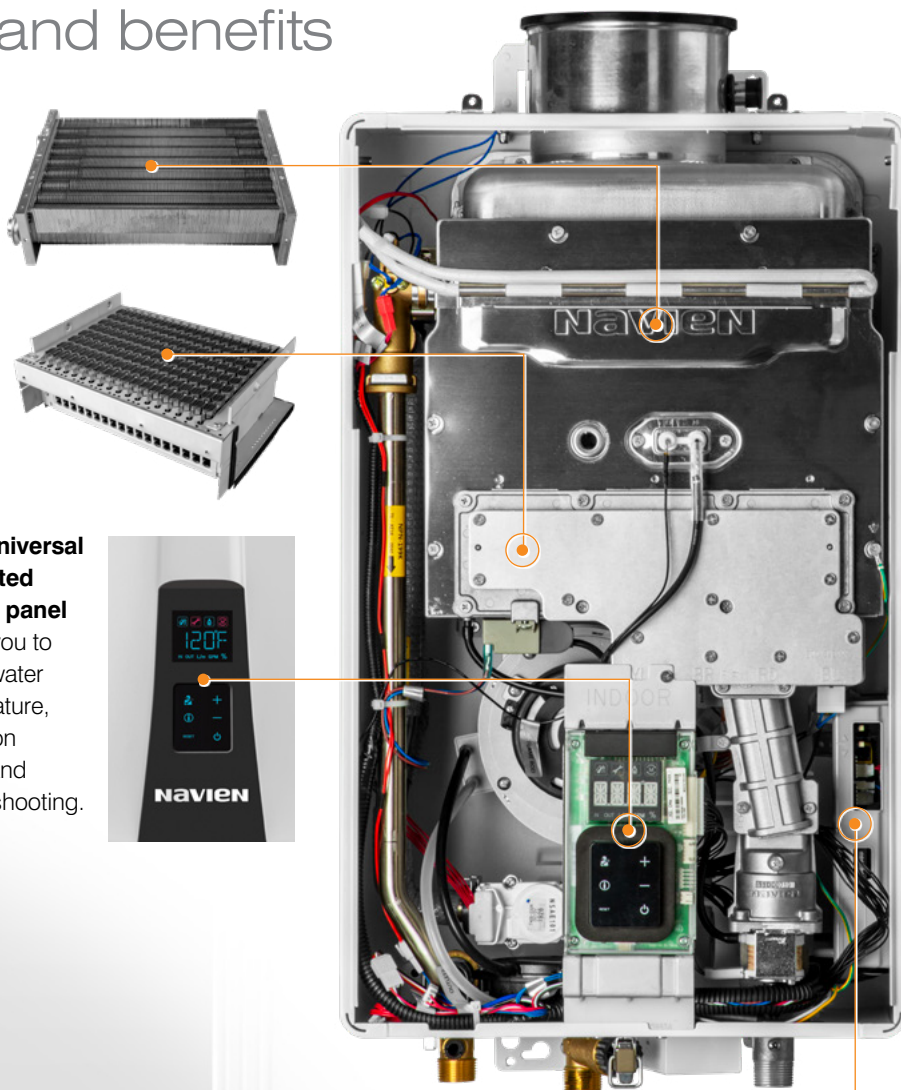
### NPN-Exterior control panel

has the same control system as the NPN-U with the panel inside the water heater case.



### NPN-Universal integrated control panel

allows you to adjust water temperature, operation status and troubleshooting.



**Recirculation control built into circuit board.** No need to add separate controller saving time and money.



**Pin-to-pin design** matches configuration of other tankless models for easy retrofit installation.



KD **navien**®



# COMPARE our advantages to other non-condensing tankless

**Exclusive Navien NPN-U** indoor or outdoor unit and **NPN-E** outdoor unit. NPN-E outdoor models also feature remote control and built-in button controls for easy service.



**NPN-Universal**  
indoor version



**NPN-Universal**  
with vent cap for  
outdoor use



**NPN-Exterior**  
outdoor only

Endless hot water,  
endless innovation  
and endless  
technical support



## **NaviLink™ Wi-Fi remote control.**

This optional accessory enables you to control temperatures remotely, access usage data and receive diagnostic notifications from your smart phone or tablet.



## **Space saving and lighter weight design.**

These sleek wall-hung units use much less space and are substantially lighter than traditional tank water heaters and other non-condensing tankless competitors.



## **Low noise levels.**

Installations in or near media rooms, recreation rooms or any living areas of the house are possible with the quiet running NPN water heaters.



## **Cascading capability.**

For increased domestic hot water flow demand, the NPN can be cascaded with another NPN unit.



**Optional vent cap kit** is available for NPN-U models for easy conversion from indoor to outdoor use.

**Optional pipe covers** fit both NPN-U and NPN-E models for added protection and cleaner look.

Unmatched quality  
and customer service

**90%+** Navien designs and  
builds almost every part  
in the NPN tankless  
water heaters.

Navien is the only non-condensing tankless water heater manufacturer to design and produce stainless steel heat exchangers and high efficiency NaviTech™ burners. Instead of assembling parts from various suppliers, we engineer and produce 90% of the components in our NPN series units and use advanced robotics to assure manufacturing integrity.

**7 DAYS/  
WEEK** Customer support and  
advanced training makes  
Navien your best choice  
for tankless.

Besides supplying the most advanced and energy efficient systems for residential and commercial applications, Navien provides extensive field support, webinars and training events for builders, engineers, architects and contractors. Our full time customer support network provides quick answers to installation and operational questions.

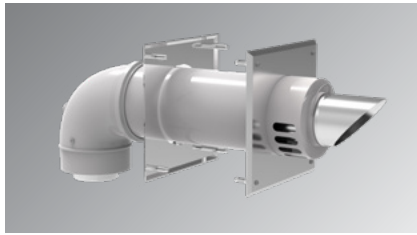


**NPN** at a  
glance

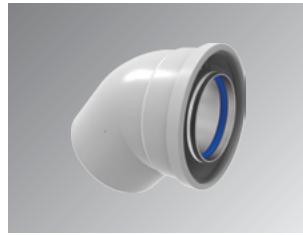
	Navien NPN	Traditional tank water heater	Traditional non-condensing tankless
Patented NaviTech™ technology: stainless steel heat exchanger and stainless steel burner	YES	NO	NO
Universal indoor/outdoor design	YES	NO	NO
Efficiency rating	82%	~50–60%	~70–80%
Dimensions (W x D x H)	14.0" x 9.3" x 23"	~25" diameter x 59"	
Weight	55 lbs.	150+ lbs.	55 lbs.
Venting	Concentric 3" x 5"	Varies 2" x 4"	Concentric 3" x 5"
Gas input	3/4"	1/2" – 3/4"	3/4"

**KD navien®**

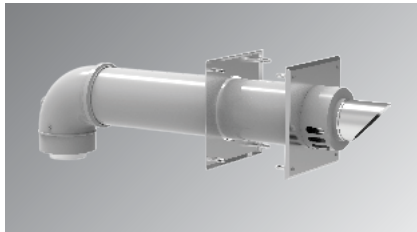
## 3" x 5" concentric venting accessories



**Sidewall termination kit**  
11.5" (292mm)  
GXXX001891



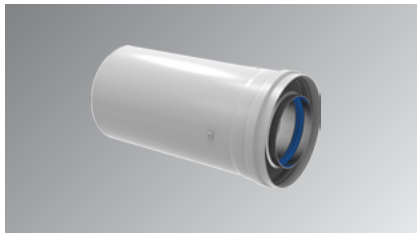
**Elbow**  
80-125 mm 45°  
GXXX001894



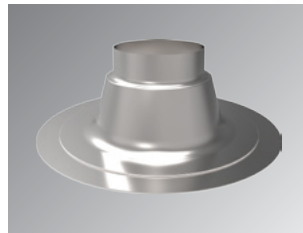
**Sidewall termination kit**  
21" (533mm)  
GXXX001892



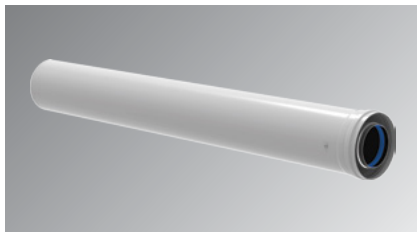
**Elbow**  
80-125 mm 90°  
GXXX001895



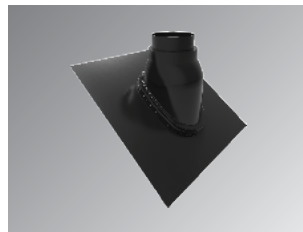
**Vent pipe extension**  
10" (254mm)  
GXXX001896



**Flat roof flashing**  
GXXX001900



**Vent pipe extension**  
39" (991mm)  
GXXX001897



**Adjustable roof flashing**  
GXXX001901



**Concentric roof termination**  
18" (457mm)  
GXXX001893



**Metal wall strap**  
6 pieces per box  
GXXX001902



**Condensate trap kit**  
GXXX001952



NaviVent™ system matched venting makes installations quick and easy.



# NPN water heater accessories



**NaviLink™  
Wi-Fi control**  
PBCM-AS-001



**HotButton™  
control kit**  
PZZZ-00046  
**Wall plate**  
GXXX001427  
**Push button**  
GXXX001426



**H2Air™ kit  
AHU optimizer**  
PNBD-000001



**Outdoor  
vent cap kit  
(NPN-U only)**  
30023991A



**Plumb easy  
valve 3/4"  
with relief valve**  
30009323A



**Pipe cover  
NPN series**  
30024017A



**Remote  
controller  
(optional for  
NPN-U models)**  
30022717A



**Recess box  
(NPN-E only)**  
30023550A  
(Lock not  
included)



**PeakFlow™  
anti-scale system**  
GXXX001725

**PeakFlow™  
replacement media**  
GXXX001726

**PeakFlow™  
replacement media**  
GXXX001327



**Cascade cable**  
GXXX000546

**External  
pump wire**  
GXXX001319



N O N - C O N D E N S I N G T A N K L E S S R E I N V E N T E D

## Dimensions

NPN-U series	NPN-E series
<p>Overhead View</p> <p>Front View</p> <p>Supply Connections</p> <p>Connection Size</p> <ul style="list-style-type: none"> <li>A Exhaust Gas Vent 3"</li> <li>B Air Intake 5"</li> <li>C Hot Water Outlet 3/4"</li> <li>D Cold Water Inlet 3/4"</li> <li>E Gas Inlet 3/4"</li> <li>F Condensate Drain 5/8"</li> </ul>	<p>Overhead View</p> <p>Front View</p> <p>Supply Connections</p> <p>Connection Size</p> <ul style="list-style-type: none"> <li>A Hot Water Outlet 3/4"</li> <li>B Cold Water Inlet 3/4"</li> <li>C Gas Inlet 3/4"</li> </ul>

## Ratings & Specifications

Item		NPN-Universal Model			NPN-Exterior Model		
		NPN-160U	NPN-180U	NPN-199U	NPN-160E	NPN-180E	NPN-199E
Heat capacity (input) natural gas/propane gas		10,700– 160,000 (BTU/H)	10,700– 180,000 (BTU/H)	10,700– 199,900 (BTU/H)	10,700– 160,000 (BTU/H)	10,700– 180,000 (BTU/H)	10,700– 199,900 (BTU/H)
Uniform Energy Factor for NG & LP		0.81 UEF					
Flow rate (DHW)	35°F (18°C) temp rise	7.5 GPM (28 L/m)	8.5 GPM (32 L/m)	9.5 GPM (36 L/m)	7.5 GPM (28 L/m)	8.5 GPM (32 L/m)	9.5 GPM (36 L/m)
	45°F (23°C) temp rise	5.8 GPM (22 L/m)	6.6 GPM (25 L/m)	7.4 GPM (28 L/m)	5.8 GPM (22 L/m)	6.6 GPM (25 L/m)	7.4 GPM (28 L/m)
	67°F (36°C) temp rise	4.0 GPM (15 L/m)	4.6 GPM (17 L/m)	5.1 GPM (19 L/m)	4.0 GPM (15 L/m)	4.6 GPM (17 L/m)	5.1 GPM (19 L/m)
Dimensions		14.0" W x 23.0" H x 9.3" D					
Weight		55 lbs (25 kg)	60 lbs (27 kg)	60 lbs (27 kg)	55 lbs (25 kg)	60 lbs (27 kg)	60 lbs (27 kg)
Installation type		Indoor wall-hung (vent kit option for outdoor)			Only outdoor wall-hung		
Venting type		Forced draft direct vent (indoor only)					
Ignition type		Electronic ignition					
Water pressure		15–150 PSI					
Natural gas supply pressure (from source)		3.5" WC –10.5" WC					
Propane gas supply pressure (from source)		8" WC –13" WC					
Natural gas manifold pressure (min-max)		2.83" WC, 0.70" WC	2.25" WC, 0.53" WC	2.81" WC, 0.53" WC	3.23" WC, 0.69" WC	2.38" WC, 0.53" WC	2.99" WC, 0.52" WC
Propane gas manifold pressure (min-max)		5.93" WC, 1.38" WC	5.28" WC, 1.31" WC	6.55" WC, 1.31" WC	6.34" WC, 1.35" WC	5.39" WC, 1.28" WC	6.61" WC, 1.28" WC
Minimum flow rate		0.5 GPM (1.9L/m)					
Connection sizes		3/4" NPT cold water inlet 3/4" NPT hot water outlet 3/4" NPT gas inlet					
Power supply	Main supply	120V AC, 60 Hz					
	Normal	90 W	88 W	120 W	90 W	88 W	120 W
	Standby	4 W					
	Anti-frost	114 W					
	External pump	< 150 W, 1.5 A					
Materials	Fuse	5.0 A					
	Casing	Cold rolled carbon steel					
Safety devices	Heat exchanger	Stainless steel					
		Flame rod, APS, ignition operation detector, water temperature high limit switch, power surge fuse					

Navien reserves the right to change specifications at any time without prior notice.  
Please refer to [www.NavienInc.com](http://www.NavienInc.com) to verify you have the most current information.

## Warranty

Application	Labor	Parts	Heat Exchanger
Residential	Standard	1 year	5 years
	Uncontrolled Recirculation <sup>2</sup>	1 year	3 years
Commercial or Combi <sup>1</sup>	Standard	1 year	5 years
	Uncontrolled Recirculation <sup>1</sup>	1 year	3 years

<sup>1</sup>Combi refers to a combination potable water and space heating application.  
Water heaters cannot be used in space heating only applications.

<sup>2</sup>Uncontrolled-Recirculation: External pumps configured to circulate continuously through the water heater are subject to the uncontrolled recirculation warranty terms. An aquastat is the minimum pump control requirement for DHW or storage tank recirculation in order to maintain the full controlled recirculation warranty.

For complete details please refer to the full warranty at [NavienInc.com](http://NavienInc.com).



Navien Inc.  
20 Goodyear, Irvine, CA 92618  
800-519-8794, [NavienInc.com](http://NavienInc.com)

**KD NAVIEN®**

NPN-BR001-1911  
©2019 Navien Inc.

N O N - C O N D E N S I N G T A N K L E S S R E I N V E N T E D