



The new degree of comfort.®

## Rheem Prestige® CRTGH is a series of High-Efficiency Condensing Tankless Gas Water Heaters designed for continuous hot water

### Efficiency

- Up to 0.93 UEF with stainless steel condensing heat exchanger

### Easy Installation and Service

- **2" venting connections**
- **Vent up to 150 ft with 3" PVC and 60 ft with 2" PVC**
- Built-in condensate neutralizer
- 1/2" Gas line compatibility up to 24 ft.<sup>1</sup>
- **Maintenance Notice Setting** – Alerts homeowner, after 500 hours of use, to call for service (optional)
- Self-diagnostic system for easy installation and service
- High-altitude capability – up to 8,400 ft. elevation above sea level<sup>2</sup>
- Digital remote control **now pre-wired.** 10 ft. of thermostat wire included – shows temperature setting and service codes
- Requires 120V power supply

### Performance

- **Industry Leading! Low Flow Activation** – Minimum flow rate of .26 GPM and minimum activation flow rate of .40 GPM ensures hot water even in low demand situations
- **Recirculation Pump Kit-Ready** – Providing faster hot water at the tap and savings of up to 12,000 gallons water/year<sup>3</sup>
- **Hot Start Programming** – Minimizes cold water bursts by staying in ready-fire state for back-to-back hot water needs

### Technology

- **EcoNet® Enabled** – all Tankless products from 2010 to present can connect to EcoNet mobile app via Tankless EcoNet Accessory Kit (REWRA630TWH)
- For higher demand applications, easily link multiple tankless units to operate as one system:
  - 2 Units: EZ Link cable
  - Up to 6 units: MIC-6 Control Board
  - Up to 20 units: MIC-185 plus MICS-180 manifold control assembly

### Environmentally Friendly

- **Water Savings Setting** – Save water by reducing flow at the tap until set temperature is achieved (optional)

### Safety

- **Overheat film wrap** – prevents dangerous temperatures and provides industry best side-to-side clearance of 1/2 inch
- Freeze protection to -30°F

### Warranty

- 12-Year heat exchanger – residential, 5-year heat exchanger – commercial, 5-year parts and 1-year labor
- See Warranty Certificate for complete information

<sup>1</sup>Based on Rheem testing of 1/2" gas line with gas supply of 7" w.c. up to 24'. Installation conditions vary; Consult the Rheem® Use and Care Manual, the Rheem® Gas Piping Facts brochure (TK-GPF-12), the National Fuel Gas Code (NFPA 54, ANSI Z223.1 and CAN/CSA-B149.1), and any other local gas codes when installing a Rheem Tankless Water Heater.

<sup>2</sup>Contact customer service for exact altitude rating for each model.

<sup>3</sup>Pump kit designed for single unit applications only.



**CRTGH-95DVLN-2**  
Indoor Direct Vent

11,000-199,900 BTU/h  
Natural and LP Gas

Swap **N** for **P** in model number for LP model

Maximum Water Temperature is 140° F  
(for applications requiring up to 185° F,  
see Rheem Commercial Tankless options)



LEED Points = 2





The new degree of comfort.®



Residential Gas  
Prestige CRTGH Tankless Water Heaters

## Rheem Prestige® Specifications

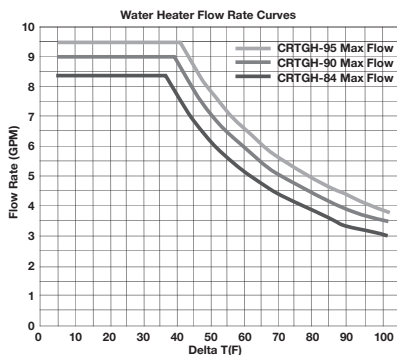
DESCRIPTION				FEATURES					ROUGHING IN DIMENSIONS (SHOWN IN INCHES)						ENERGY INFO.	
MODEL NUMBER	GAS INPUT BTU/H	TYPE	NUMBER OF BATHROOMS*	TEMP. RANGE	MIN. FLOW/ACTIVATION GPM	GPM @ 67° RISE MAX.	GPM @ 45° RISE MAX.	MAX. GPM	CONNECTION		HEIGHT	WIDTH	DEPTH	VENT DIAM.	SHIP WEIGHT (LBS.)	UNIFORM ENERGY FACTOR (UEF)
									WATER	GAS						
CRTGH-95DVLN-2	11,000-199,900	Indoor Direct Vent	4	85° to 140° F	0.26/0.40	5.7	8.5	9.5	3/4	3/4	27-1/2	18-1/2	9-3/4	2" or 3" PVC 2-Pipe	82	0.93
CRTGH-90DVLN-2	11,000-180,000	Indoor Direct Vent	3 - 4	85° to 140° F	0.26/0.40	5.2	7.7	9.0	3/4	3/4	27-1/2	18-1/2	9-3/4	2" or 3" PVC 2-Pipe	82	0.93
CRTGH-84DVLN-2	11,000-157,000	Indoor Direct Vent	3	85° to 140° F	0.26/0.40	4.6	6.7	8.4	3/4	3/4	27-1/2	18-1/2	9-3/4	2" or 3" PVC 2-Pipe	82	0.93

\*Based on simultaneous showers using 2.5 GPM flow rate pre-mixed with cold water line. Flow rates vary depending on temperature of incoming cold water and water heater set temperature. Refer to flow rate curves for accurate sizing. Uniform Energy Factor based on Natural Resources Canada (NRCAN) requirements. All models are available in Natural Gas and Propane (LP). For Propane replace the N with P when ordering. Factory set maximum temperature is 120° F. See Use and Care Manual for setting. Consult factory for information on sizing the application. Vent Termination Kits are required for Direct Vent models. Contact your distributor for details. Proper gas pressure must be ensured to supply tankless gas water heaters – up to 199,900 BTU/h for CRTGH-95 models, up to 180,000 BTU/h for CRTGH-90 models, up to 157,000 BTU/h for CRTGH-84 models. (Consult your gas supplier)

Temperature Rise (° F)

Model Number	35°	45°	50°	60°	67°	70°	80°	90°	100°
CRTGH-95 Water Flow (GPM)	9.5	8.5	7.7	6.4	5.7	5.5	4.8	4.3	3.8
CRTGH-90 Water Flow (GPM)	9.0	7.7	6.9	5.8	5.2	4.9	4.3	3.8	3.5
CRTGH-84 Water Flow (GPM)	8.4	6.7	6.0	5.0	4.6	4.3	3.8	3.3	3.0

Above estimates are for sizing purposes only.

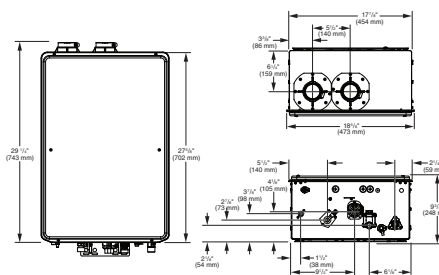


Maximum Vent Length (intake/outlet):

NUMBER OF 90° ELBOWS	MAXIMUM LENGTH OF 2" STRAIGHT PIPE	MAXIMUM LENGTH OF 3" STRAIGHT PIPE
0 or 1	60 ft.	150 ft.
2	58.5 ft.	148.5 ft.
3	57 ft.	147 ft.
4	55.5 ft.	145.5 ft.
5	54 ft.	144 ft.
6	52.5 ft.	142.5 ft.

(ULC-S636 pipe must be used for Canada.)

Indoor Direct Vent



## Parts and Accessories

Venting & terminations – 2" or 3" PVC, recess boxes, pipe covers, extra remote controls, EZ-Link™ cable, manifolds and cables, service valve kits, service parts, flush kits, recirculation pump kits and AllClear™ water treatment system. For more information on Tankless parts and accessories, see the Parts and Accessories Catalog or call 866-720-2076.

In keeping with its policy of continuous progress and product improvement, Rheem reserves the right to make changes without notice.

Rheem Canada Ltd./Ltée • 125 Edgeware Road, Unit 1  
Brampton, Ontario L6Y 0P5 • www.rheem.ca



INTEGRATED HOME COMFORT