


# Slant/Fin LYNX


*Modulating Condensing Gas Boiler  
with optional Domestic  
Hot Water Generator*



## Lynx Boiler Features

- 95% AFUE 
- 3 models, 90, 120, 150 MBH max input suits most residential applications
- Input modulation from 25, 30, 37.5 MBH
- Advanced design, long life cast aluminum silicon alloy heat exchanger
- Natural or L.P. gas
- PVC/CPVC or stainless steel air intake and vent pipe -100 ft. equivalent length
- Digital electronic control w/outdoor reset
- Low NOx - friendly to the environment
- Ideal for radiant, baseboard, DHW or mixed applications
- Free-standing or wall hung
- All connections are on top

## Additional Lynx Combi Boiler Features

- Maintenance free brazed plate, DHW Stainless Steel heat exchanger
- Heat transfers from boiler to DHW with nearly 100% efficiency 
- Provides hot water when you need it



Model No. LX-120CB

***Free*** 5 year parts & labor  
warranty included when  
registered upon installation!

***The next generation modulating, condensing gas boiler  
with optional Domestic Hot Water capabilities!***

### **Reliable next-generation technology**

The Lynx boiler utilizes an advanced aluminum silicon alloy low mass heat exchanger design that makes it highly reliable and efficient. The patented heat exchanger has large waterways which prevents plugging and virtually eliminates maintenance.



### **Modulation reduces cycling, maximizes fuel savings.**

The Lynx's advanced operating controls automatically changes gas input up or down according to demand. The stainless steel cylindrical woven fiber burner supports the modulated flame for peak performance. Ordinary boilers run inefficiently when they repeatedly cycle on and off. The Lynx will closely match the boiler's output to just what is needed to meet demand for heat. It has longer run times and wasteful cycling is reduced. Lynx's controller also resets supply water temperature automatically when connected to an outdoor sensor, further enhancing efficiency of the entire heating system.

### **Sealed combustion process offers peace of mind.**

The Lynx boiler operates in total isolation from household air. The combustion process is "sealed" inside the boiler, with intake air and exhaust pipes connected directly to the outdoors. This reduces infiltration into the building that causes drafts.

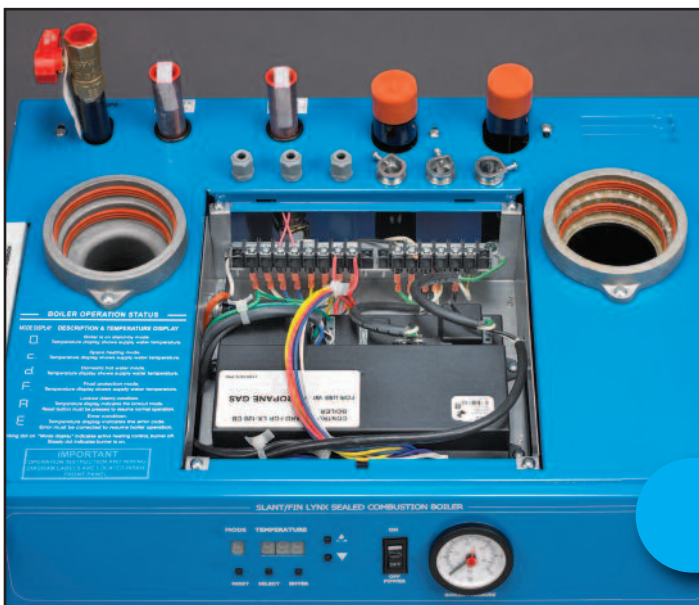


### **Cast Aluminum Heat Exchanger**

Compact, powerful and agile. Slant/Fin's new Lynx sealed combustion gas boiler purrs with performance. Operates at 95% AFUE maximizing fuel savings. Compact, light weight for easy handling. Advanced design cast aluminum heat exchanger sets a new standard for reliability. You will be proud to offer the Lynx to your customers looking for a high efficiency, advanced technology, long lasting boiler. This new generation design incorporates a cast aluminum heat exchanger that is corrosion resistant with high thermal conductivity.

### **Lynx electronic boiler control optimizes efficient operation.**

Lynx's advanced operating controls automatically modulate the boiler's output by way of boiler water temperature based on information it receives from room thermostats and outdoor sensor. It monitors the status of boiler components and controls the sequence of operation. Options for domestic hot water control are built in. An LED readout on the boiler's control panel displays current conditions, set-up details and diagnostic information.



**Front control panel, pipe, electrical connections and microprocessor control.**

Model No. LX-120CB





### Optional Domestic Hot Water Generator (DHWG)

Incorporating a brazed plate stainless steel heat exchanger, boiler water transfers heat to domestic water. This remarkable unit transfers heat to the domestic hot water with nearly 100 percent efficiency. It requires no maintenance or cleaning and will last for years and years. A circulator pump and flow switch are included. The pump is sized to overcome the friction losses of the boiler and the heat exchanger and therefore provides enough boiler water flow to transfer the maximum amount of heat energy from the boiler to the domestic hot water.

#### INSIDE THE JACKETS:

*Blower, Gas Valve Assembly–  
Monoblock Heat Exchanger, Supply and Return Tube–  
Exhaust Tube–*

*The Lynx combi provides heat and Domestic Hot Water built into one neat compact cabinet. It includes brazed plate heat exchanger and circulator.*

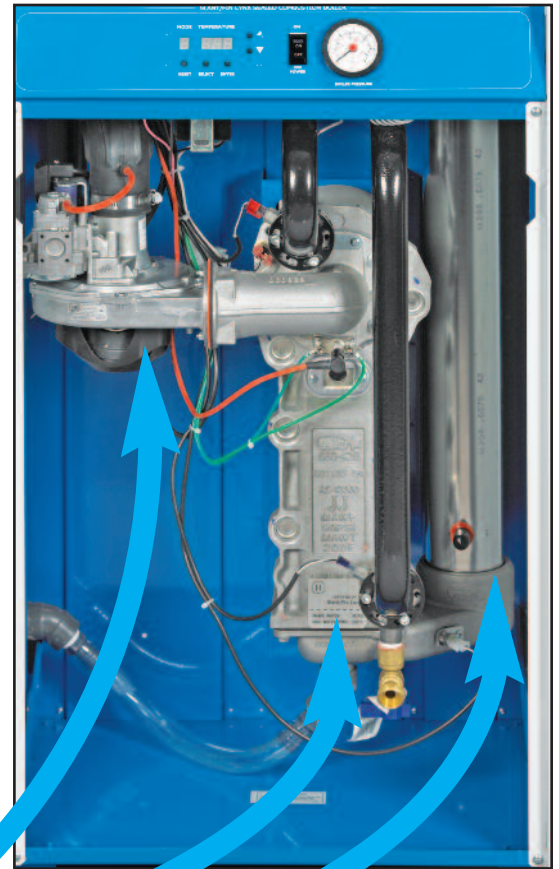
#### “DHW temp rise”

The amount of hot water produced is largely dependent on the BTUH output of the boiler, the desired flow rate, the temperature of the hot water desired and the temperature of the incoming cold water. In winter, water can be as cool as 40°F. Therefore, if you want 105°F water (approximately the temperature one would like for a shower), a 65 degree temperature rise is required. With a LX-120-CB about 3.2 gpm would be available, for example. See the box below for more information.

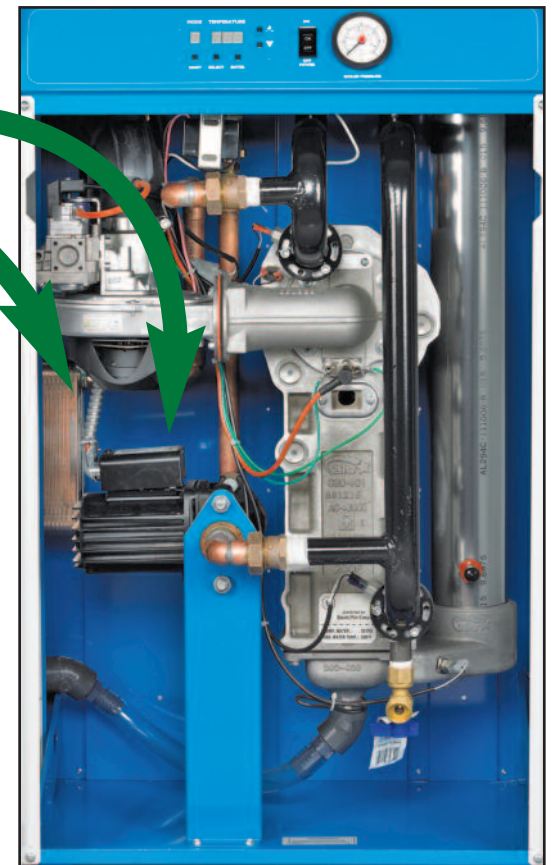
### DHW Temp. Rise vs. Water Flow

Temp. Rise $\Delta t$ -°F	DHW Flow Rate - GPM	
	LX-120CB * Boiler	LX-150CB † Boiler
100	2.0	2.3
80	2.5	3.3
70	3.0	4.0
60	3.5	4.5
55	4.0	5.0

\* Available now † Exp. spring 2011



Model No. LX-90



Model No. LX-120CB

# Slant/Fin LYNX

**Modulating Condensing Gas Boiler  
with optional Domestic Hot Water Generator**



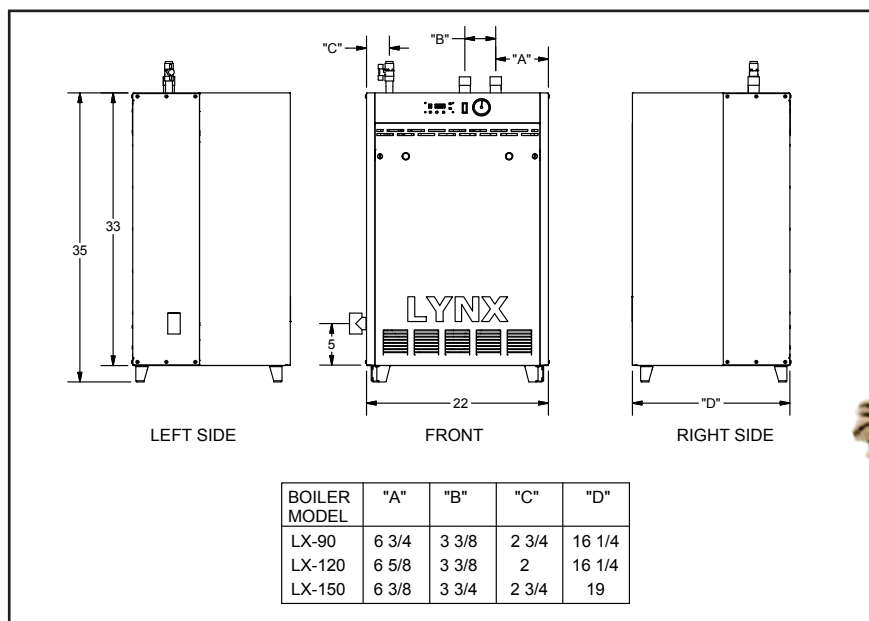
## Standard Equipment

Pre-assembled cast-aluminum mono block heat exchanger  
Pre-assembled jacket  
Woven metal fiber pre-mix burner  
Combination blower, gas valve and venturi  
Integrated boiler control with built-in diagnostics  
Direct spark ignition system  
Pressure gauge

Pressure relief valve (ASME)†  
Grundfos or Taco circulator  
Drain cock  
Built-in condensate drain and trap  
Vent and air intake terminal  
Wall mounting kit  
Optional- 409999 Rhogard Anti-freeze  
For propane, specify when ordering.

## With Combi-Boiler

Brazed Plate heat exchanger  
Flow Switch  
Built in taco 0011 Circulator



Model	AFUE	Input Max Btuh	Input Min Btuh	D.O.E. Heating Capacity	Net I=B=R Output	Exhaust Vent	Air Intake	Water Volume	Supply & Return Piping	Gas Pipe	Dimensions	Dry Boiler Weight
LX-90	95%	90,000	25,000	80,000	70,000	3" Schedule 40 PVC, CPVC or SS	3" Schedule 40 PVC, CPVC or SS	0.4 Gal	1" NPT (Male)	1/2 NPT (Female)	35" H 22" W 16.25" D	118 lbs.
LX-120	95%	120,000	30,000	106,000	92,000	3" Schedule 40 PVC, CPVC or SS	3" Schedule 40 PVC, CPVC or SS	0.6 Gal	1" NPT (Male)	1/2 NPT (Female)	35" H 22" W 16.25" D	125 lbs.
LX-120CB												147 lbs.
LX-150	95%	150,000	37,500	133,000	116,000	3" Schedule 40 PVC, CPVC or SS	3" Schedule 40 PVC, CPVC or SS	1.1 Gal	1" NPT (Male)	1/2 NPT (Female)	35" H 22" W 19" D	140 lbs.
LX-150CB												162 lbs.



**U.S.A.**  
Slant/Fin Corporation • 100 Forest Drive  
Greenvale, NY 11548 • 516-484-2600  
www.slantfin.com

**Canada**  
Slant/Fin LTD/LTEE • 6450 Northam Drive  
Mississauga, Ontario L4V 1H9 • 905-677-8400  
www.slantfin.ca