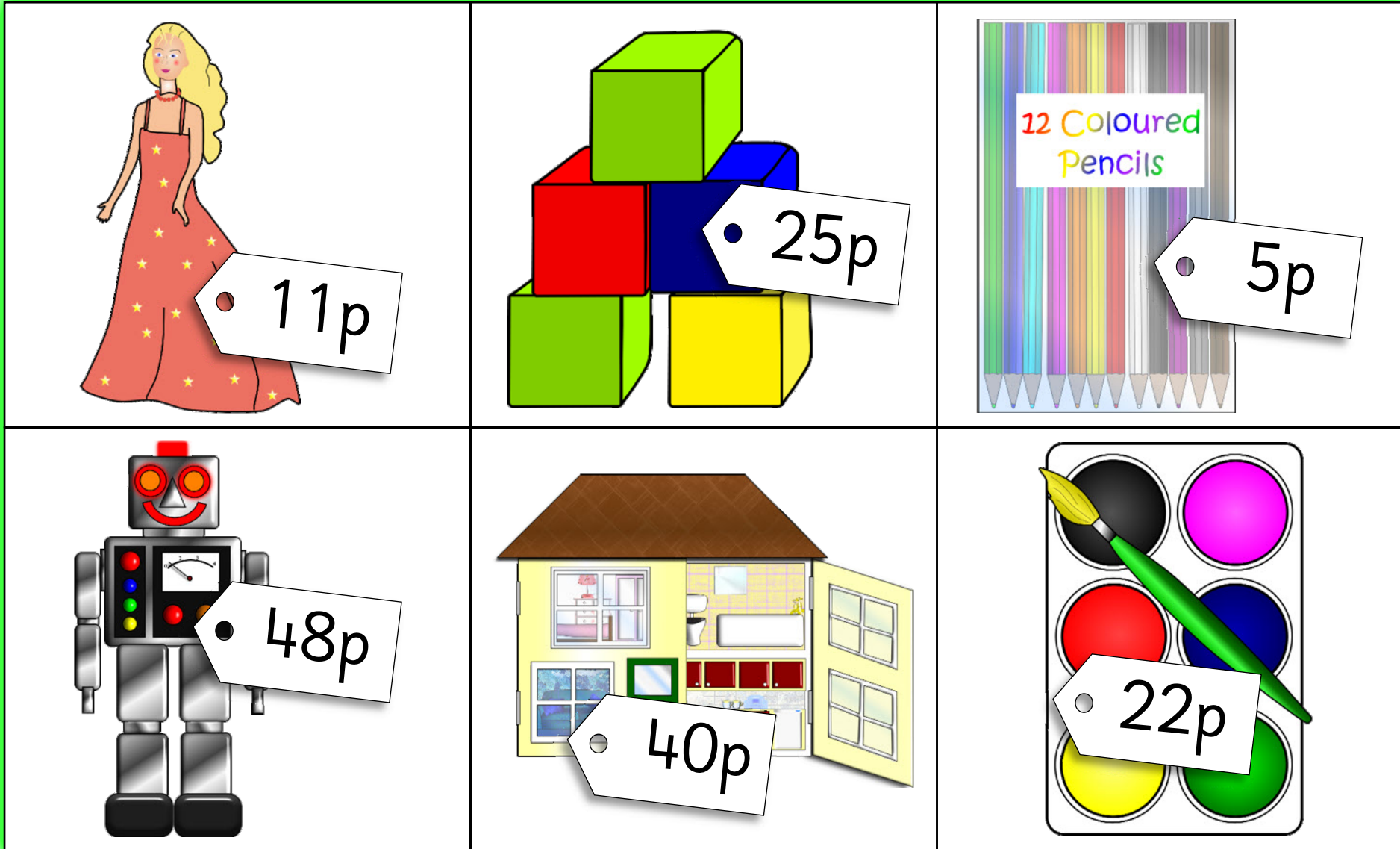


# Toy shop bingo!

(up to 50 pence)

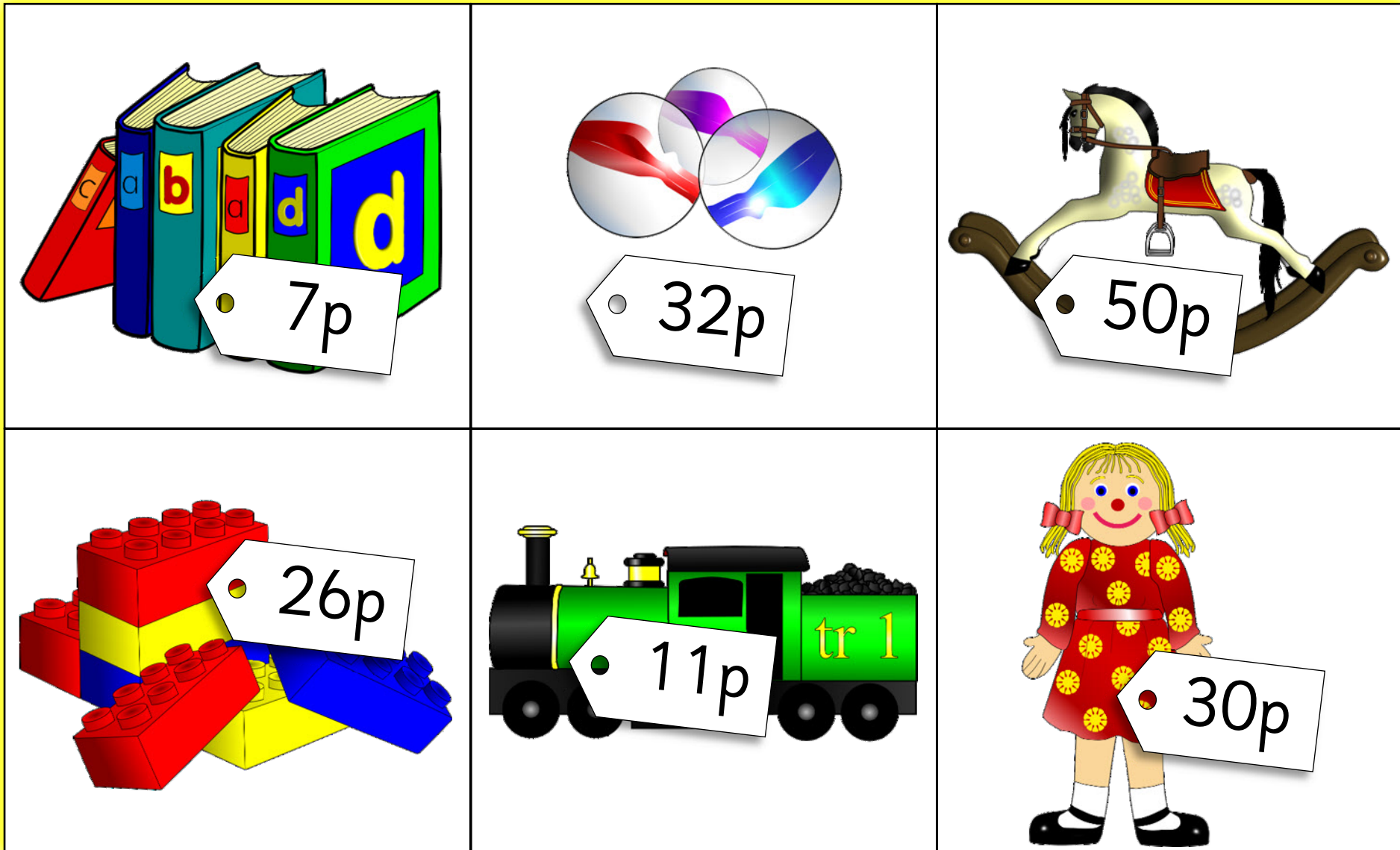
**Toys board:** children take turns to turn over a money card and, if possible, match it to a same-value toy on their board.  
First to cover their board shouts "BINGO!"



# Toy shop bingo!

(up to 50 pence)

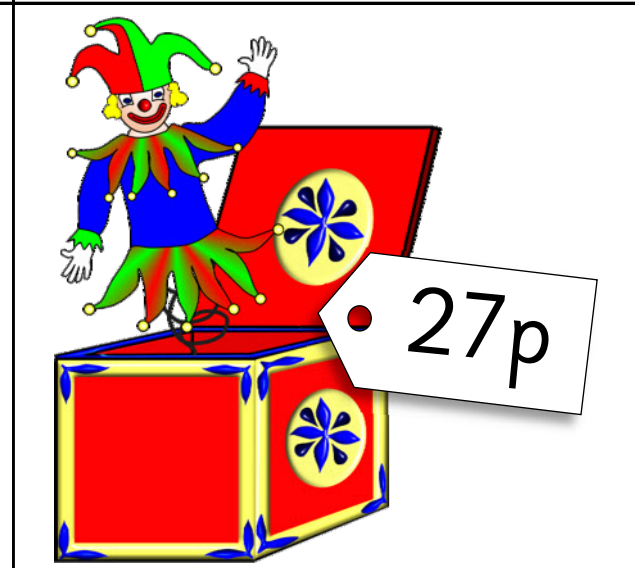
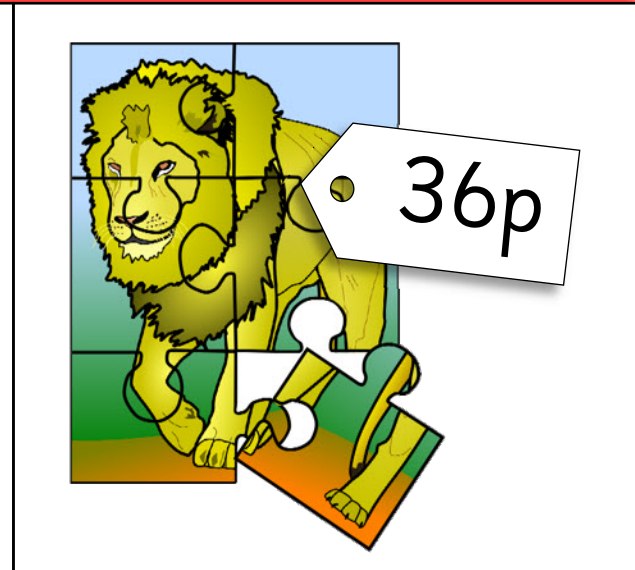
**Toys board:** children take turns to turn over a money card and, if possible, match it to a same-value toy on their board.  
First to cover their board shouts "BINGO!"



# Toy shop bingo!

(up to 50 pence)

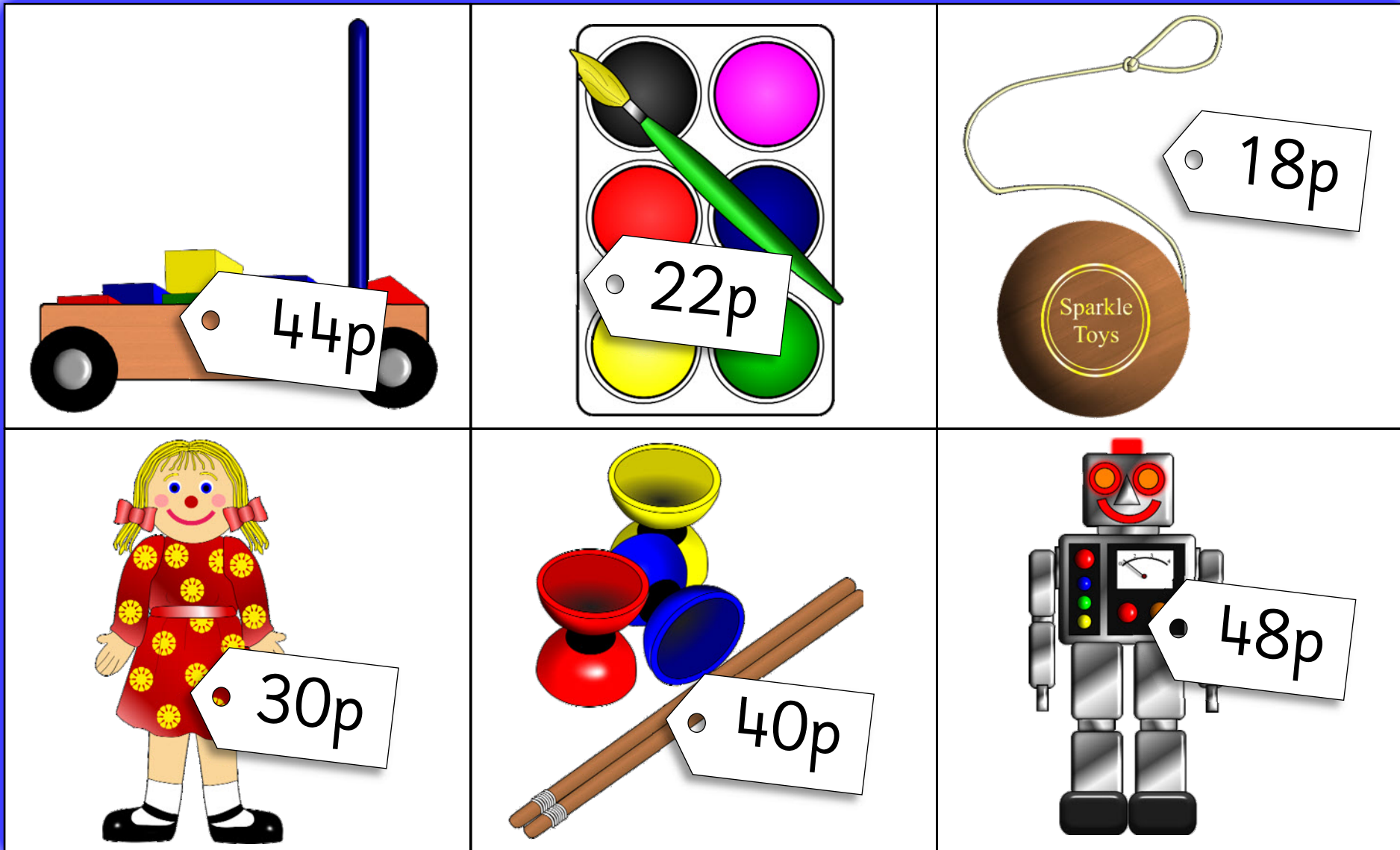
**Toys board:** children take turns to turn over a money card and, if possible, match it to a same-value toy on their board.  
First to cover their board shouts "BINGO!"



# Toy shop bingo!

(up to 50 pence)

**Toys board:** children take turns to turn over a money card and, if possible, match it to a same-value toy on their board.  
First to cover their board shouts "BINGO!"

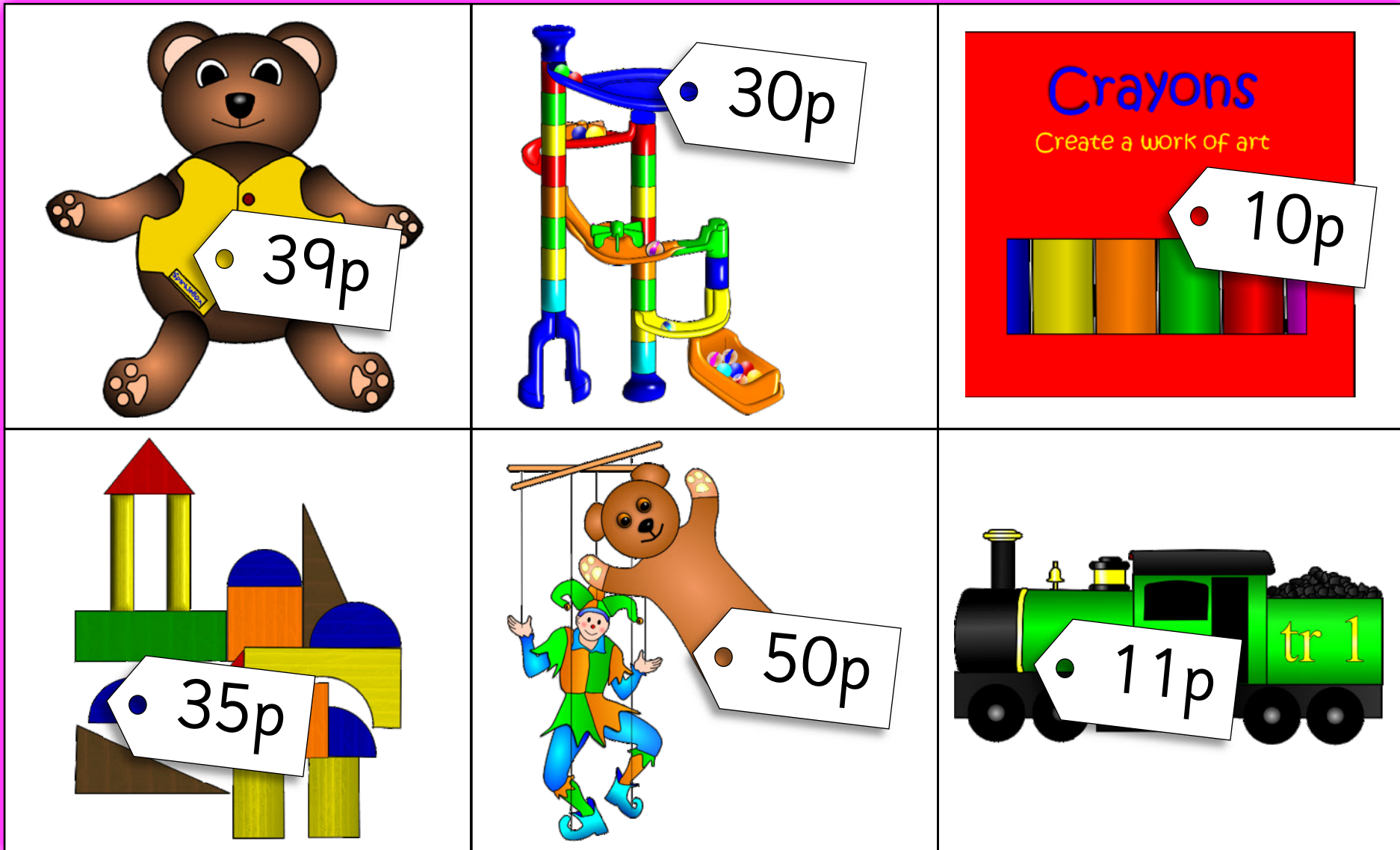




# Toy shop bingo!

(up to 50 pence)

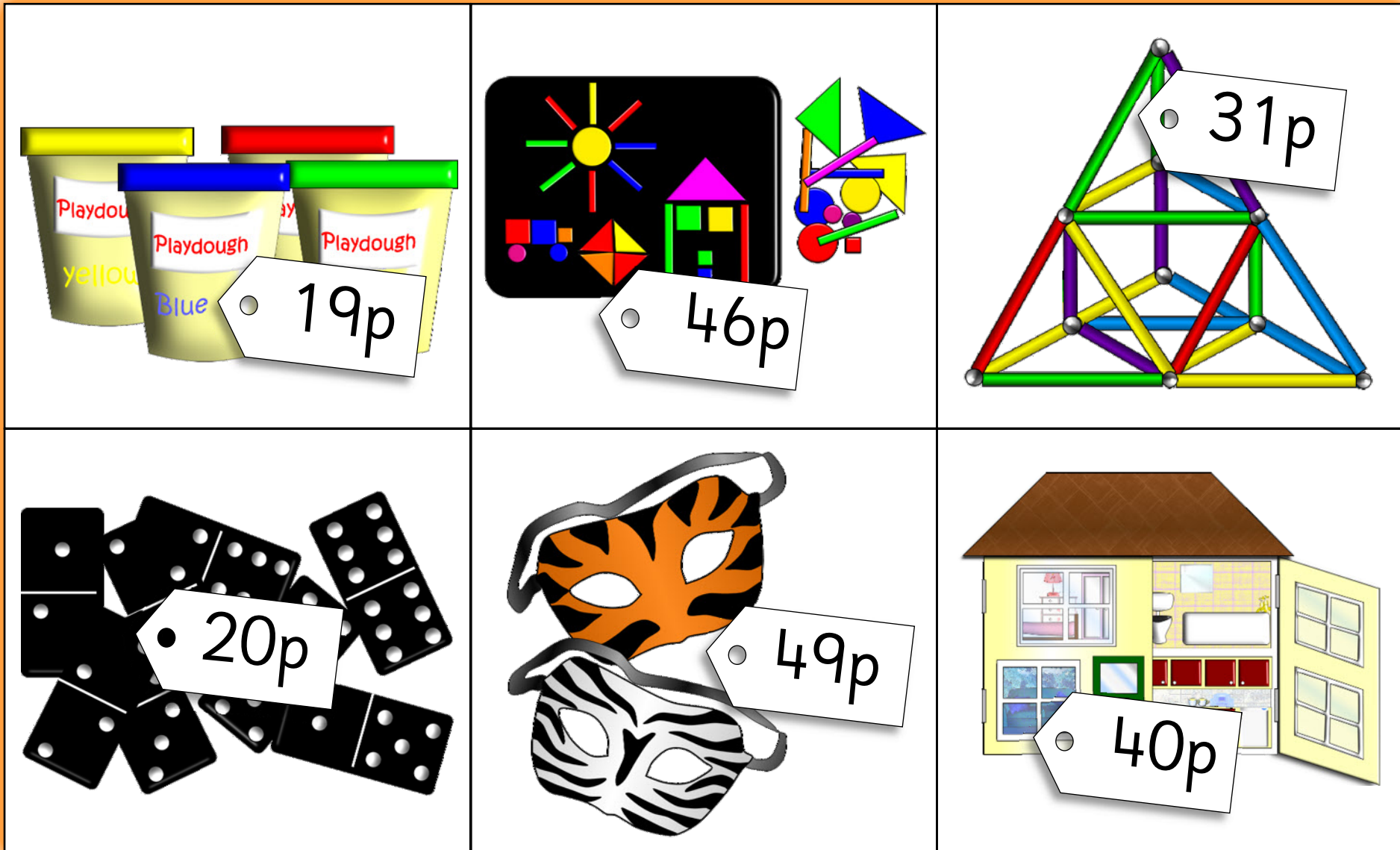
**Toys board:** children take turns to turn over a money card and, if possible, match it to a same-value toy on their board.  
First to cover their board shouts "BINGO!"



# Toy shop bingo!

(up to 50 pence)

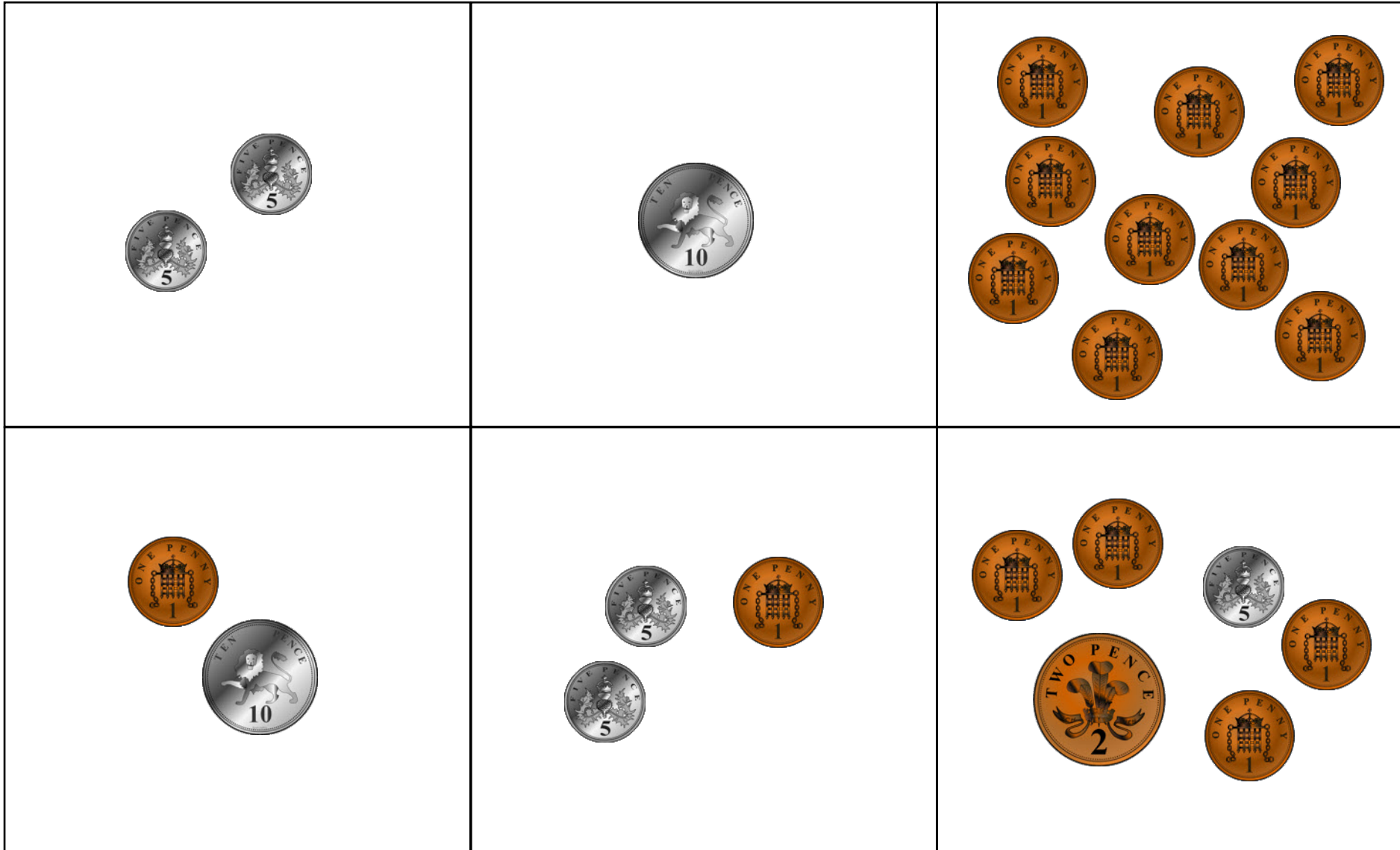
**Toys board:** children take turns to turn over a money card and, if possible, match it to a same-value toy on their board.  
First to cover their board shouts "BINGO!"



# Toy shop bingo!

(up to 50 pence)

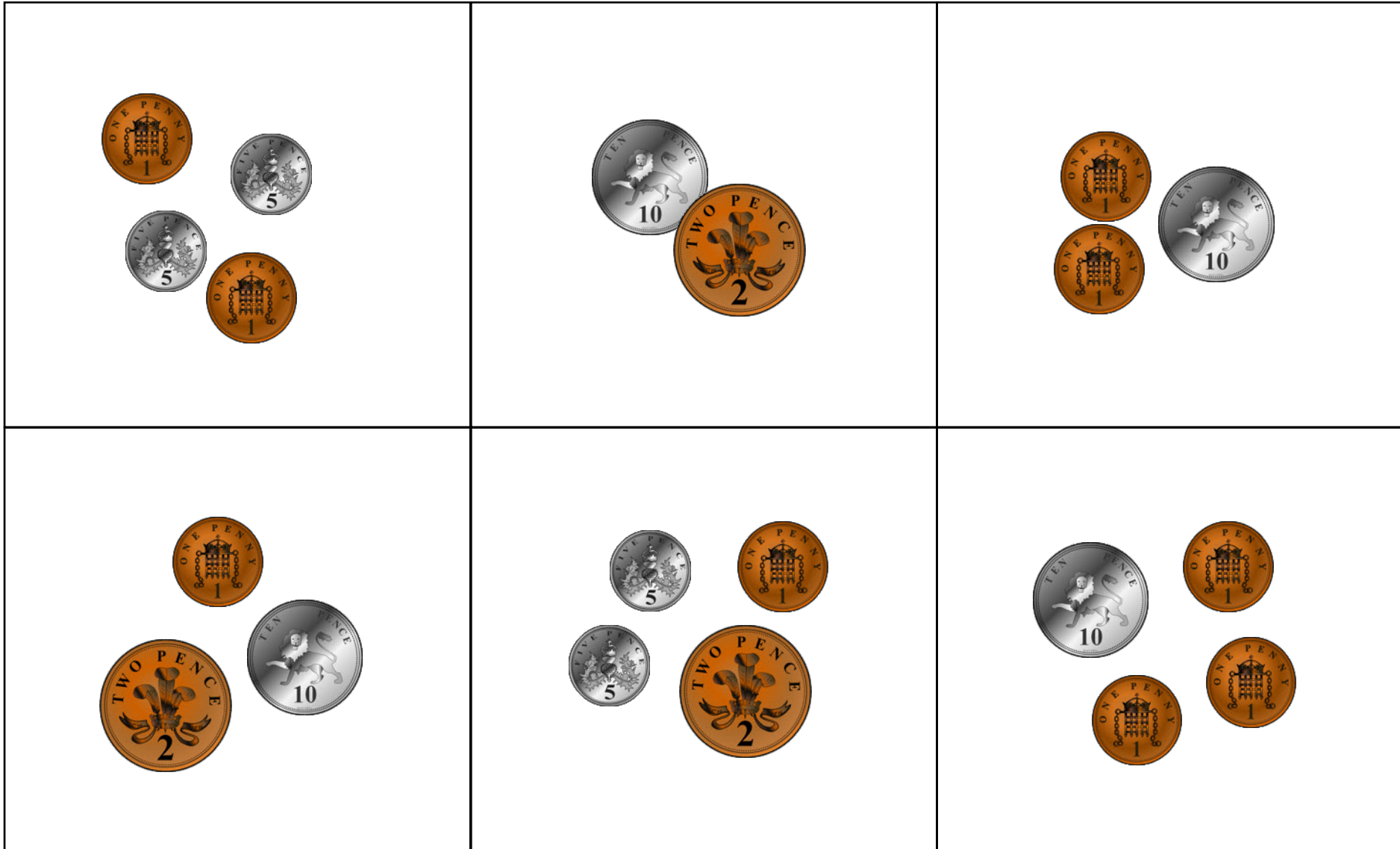
**Money cards:** cut these out for children to match to the toy boards.



# Toy shop bingo!

(up to 50 pence)

**Money cards:** cut these out for children to match to the toy boards.

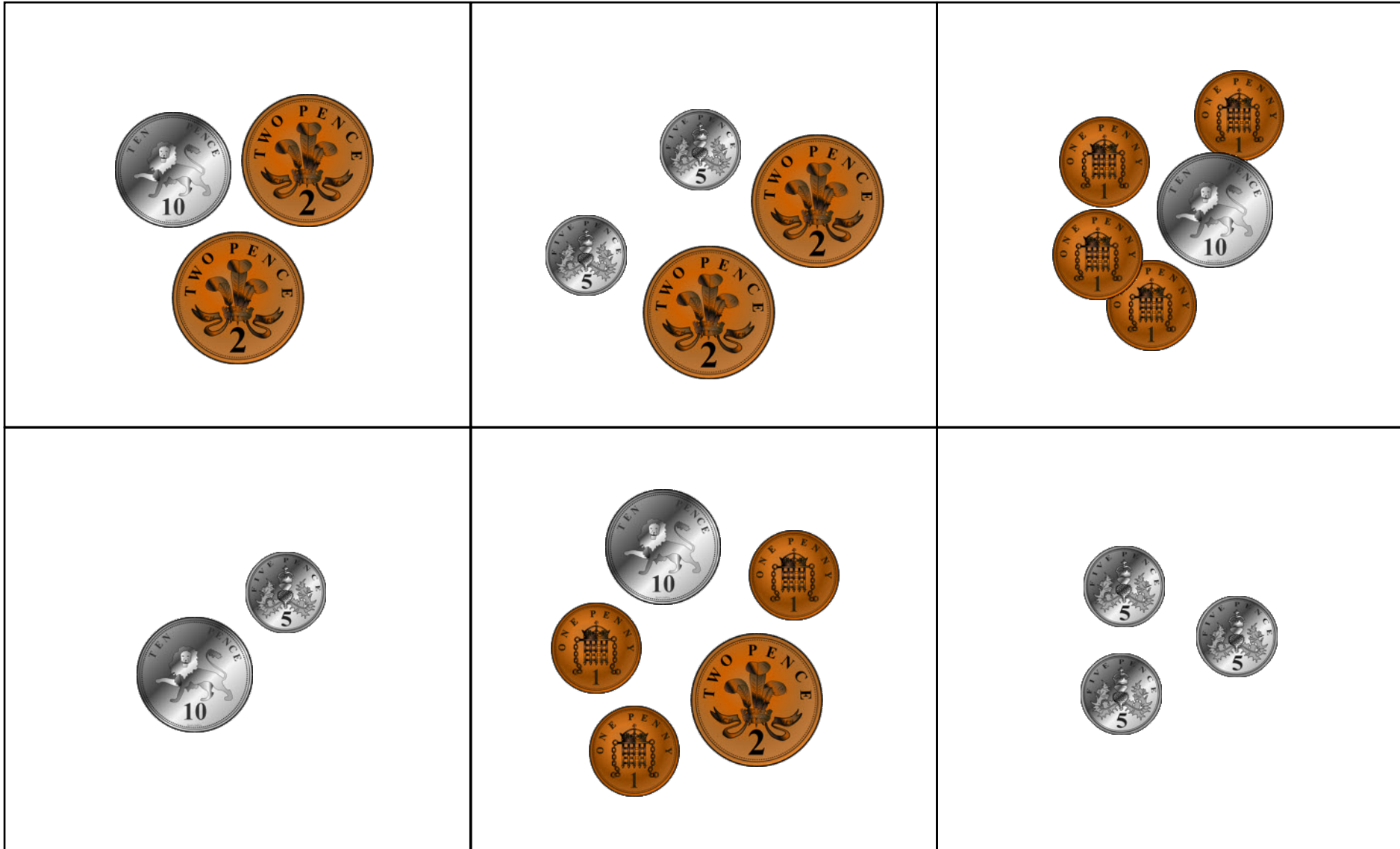




# Toy shop bingo!

(up to 50 pence)

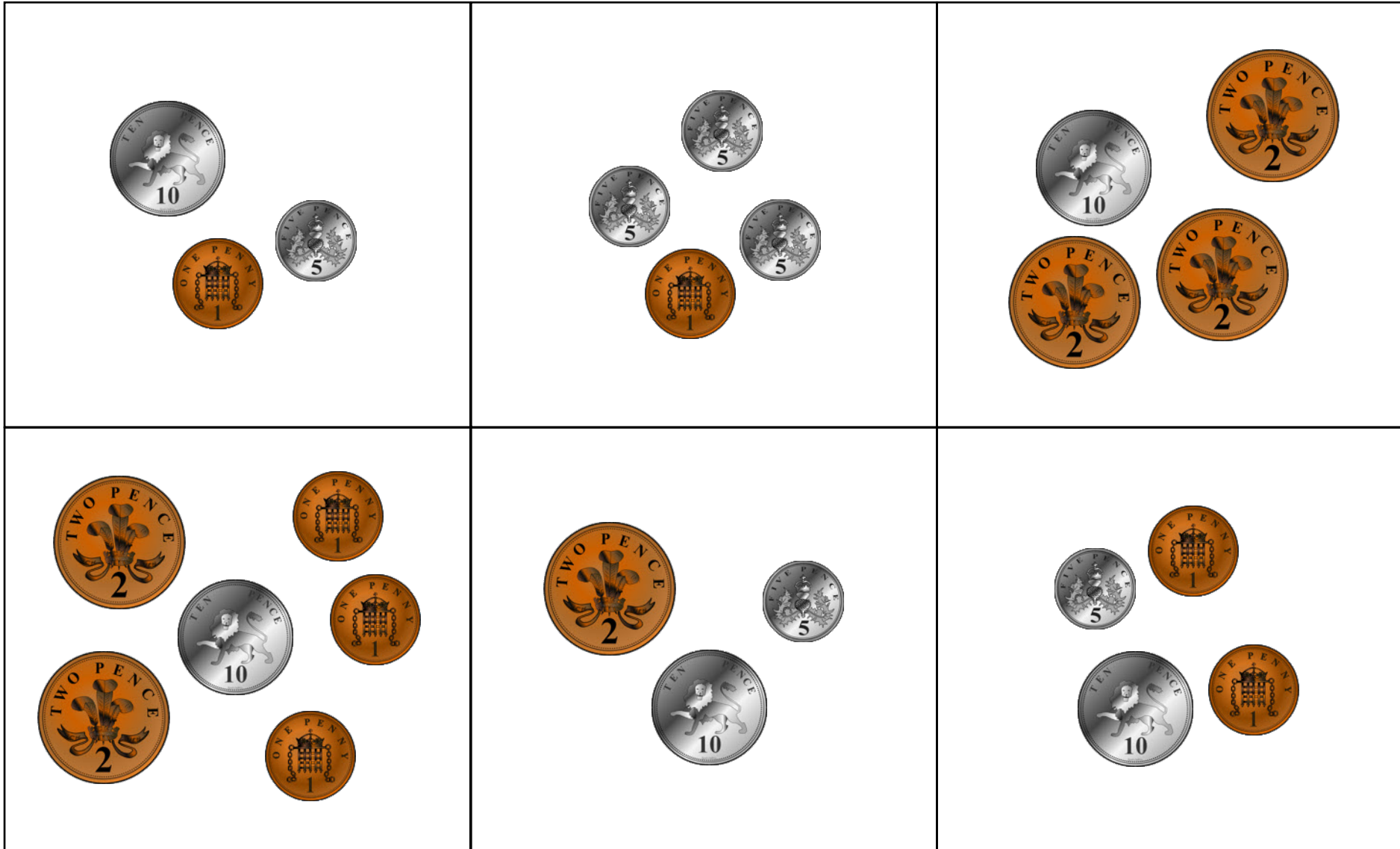
**Money cards:** cut these out for children to match to the toy boards.



# Toy shop bingo!

(up to 50 pence)

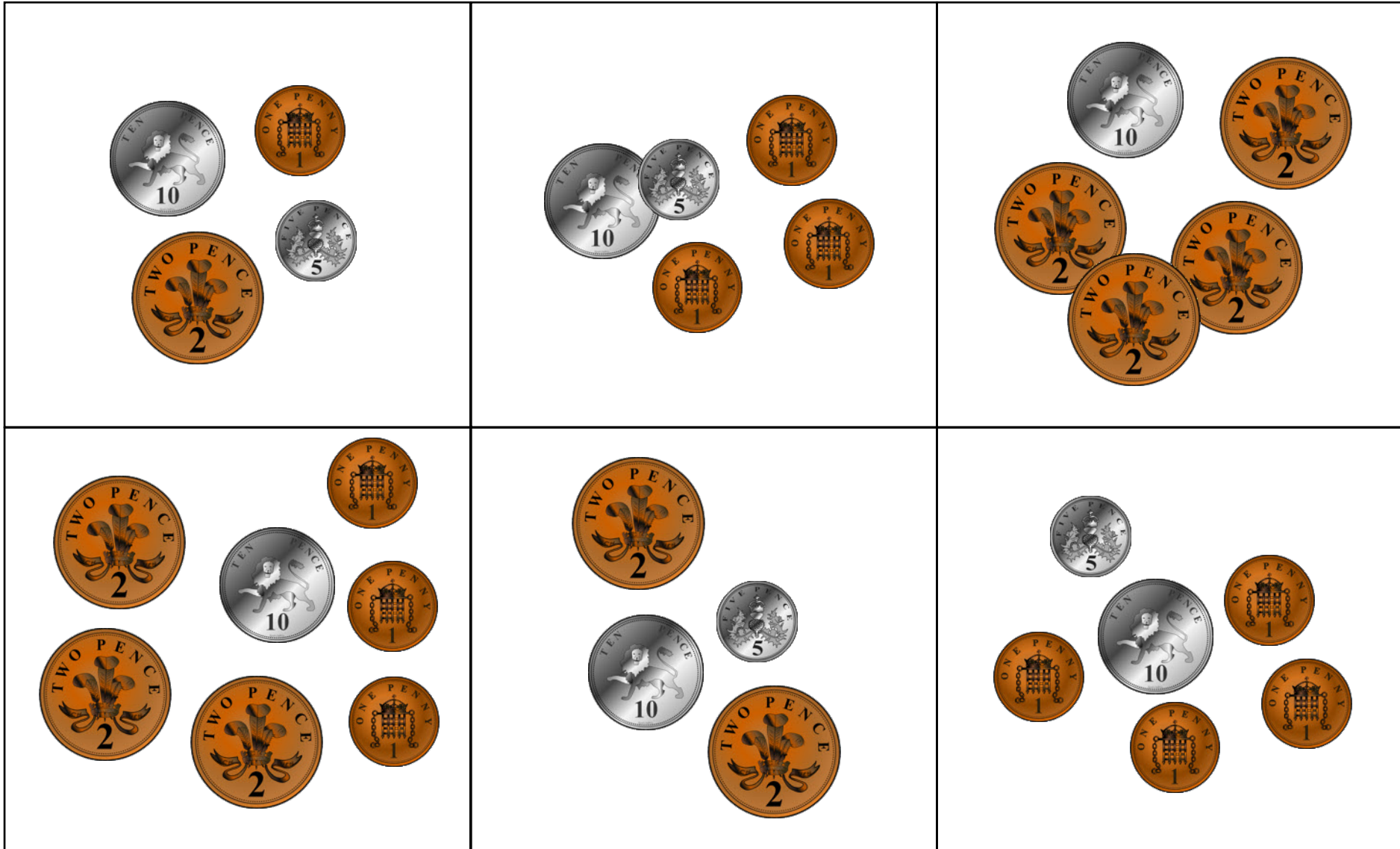
**Money cards:** cut these out for children to match to the toy boards.



# Toy shop bingo!

(up to 50 pence)

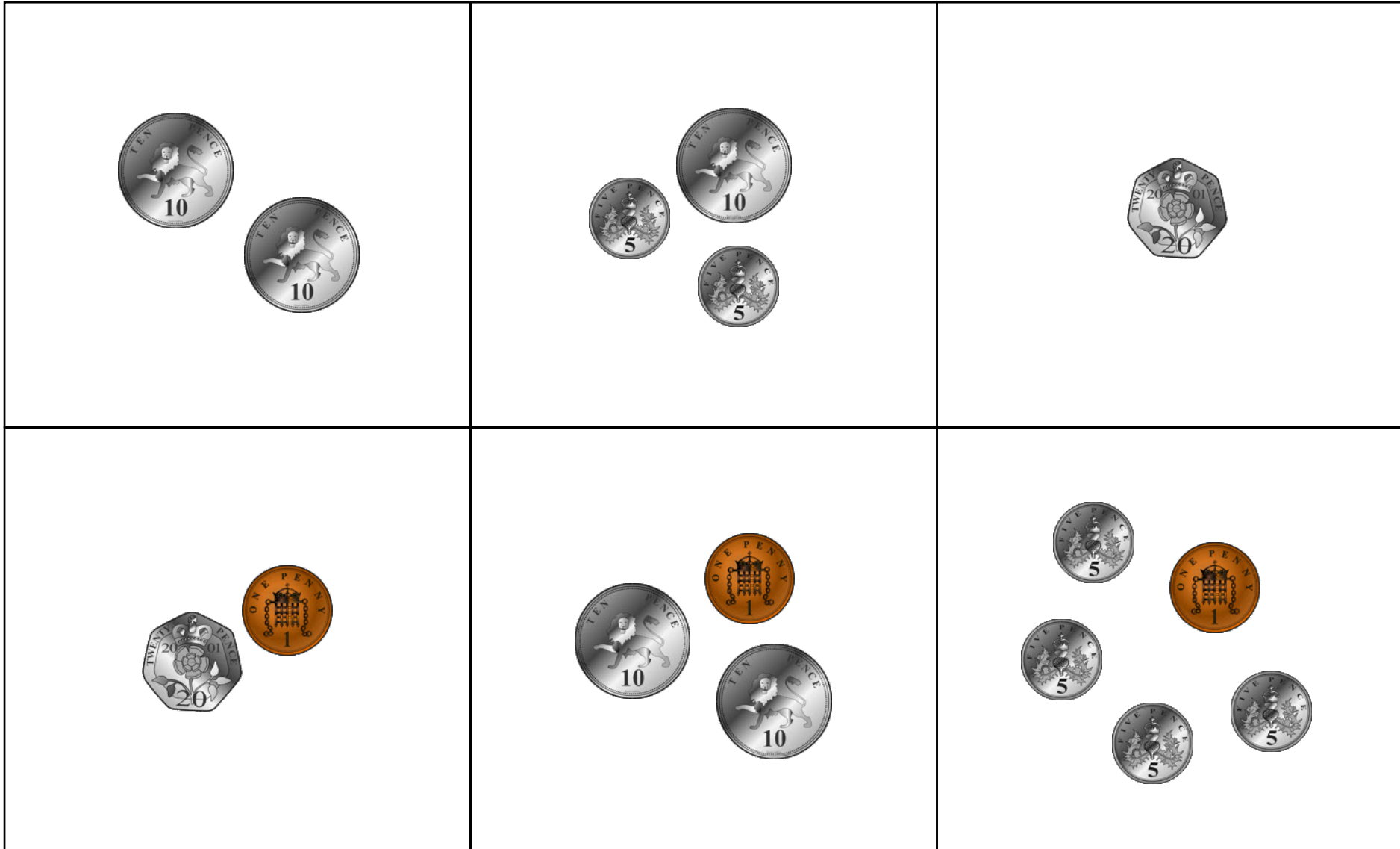
**Money cards:** cut these out for children to match to the toy boards.



# Toy shop bingo!

(up to 50 pence)

**Money cards:** cut these out for children to match to the toy boards.

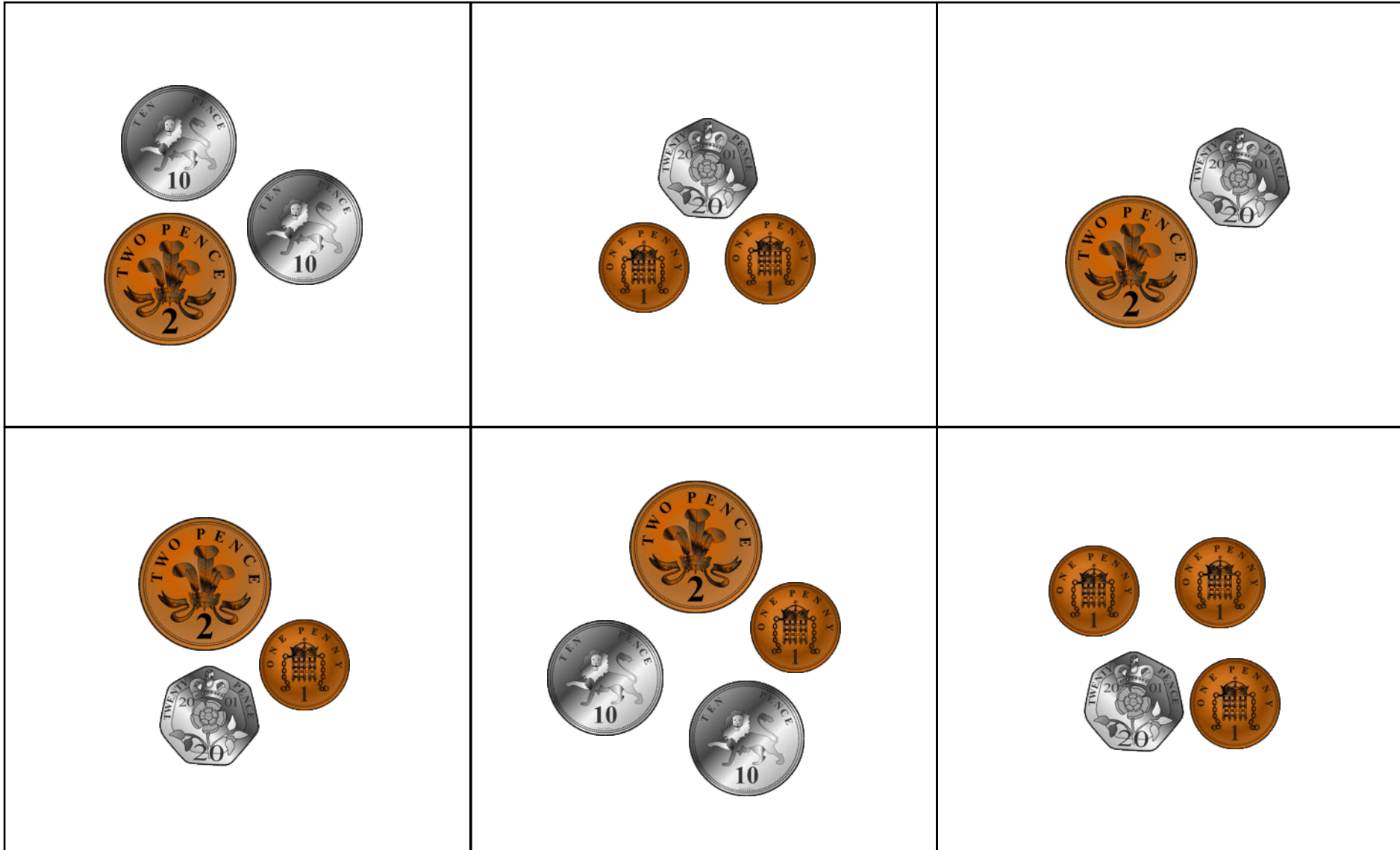




# Toy shop bingo!

(up to 50 pence)

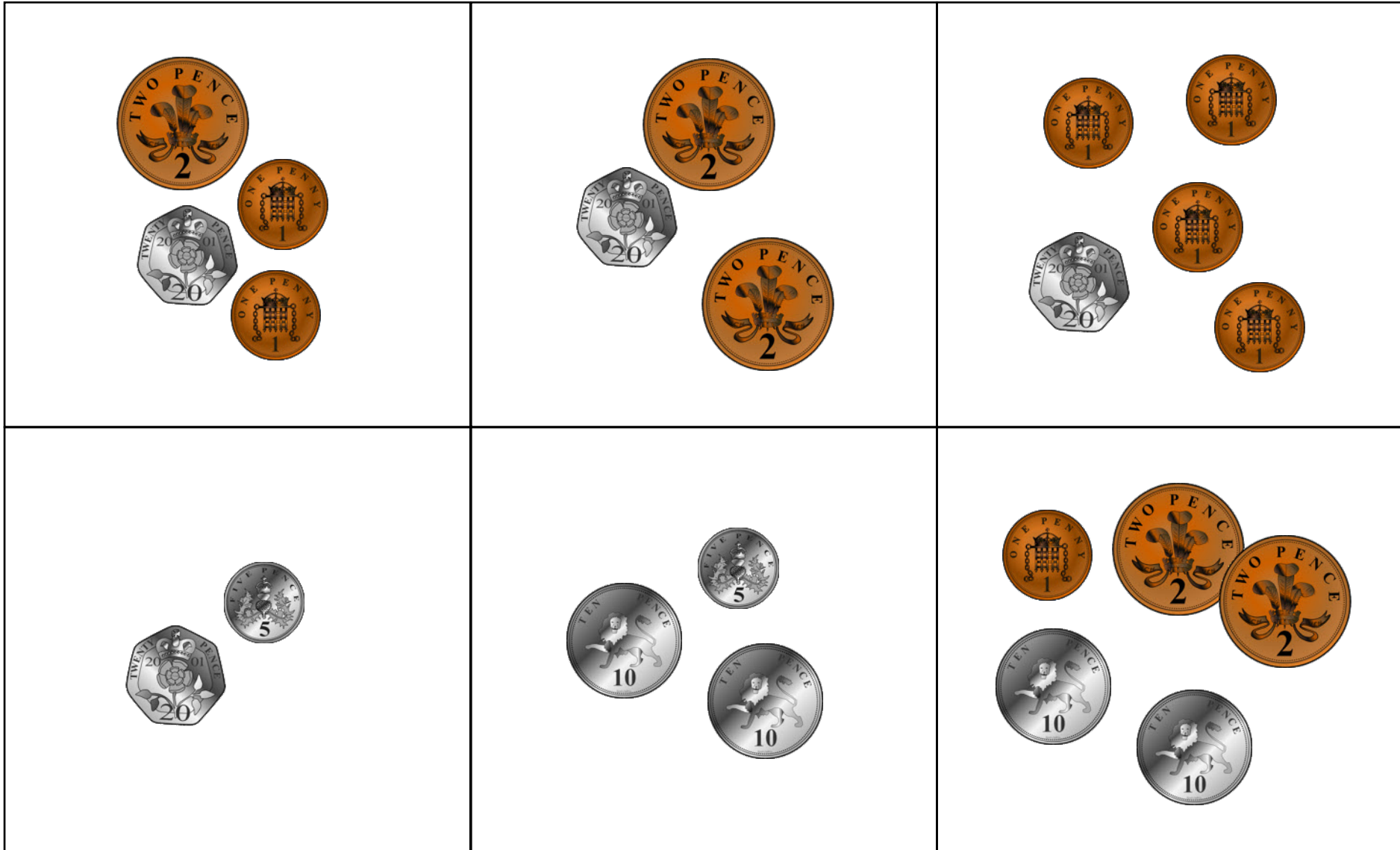
**Money cards:** cut these out for children to match to the toy boards.



# Toy shop bingo!

(up to 50 pence)

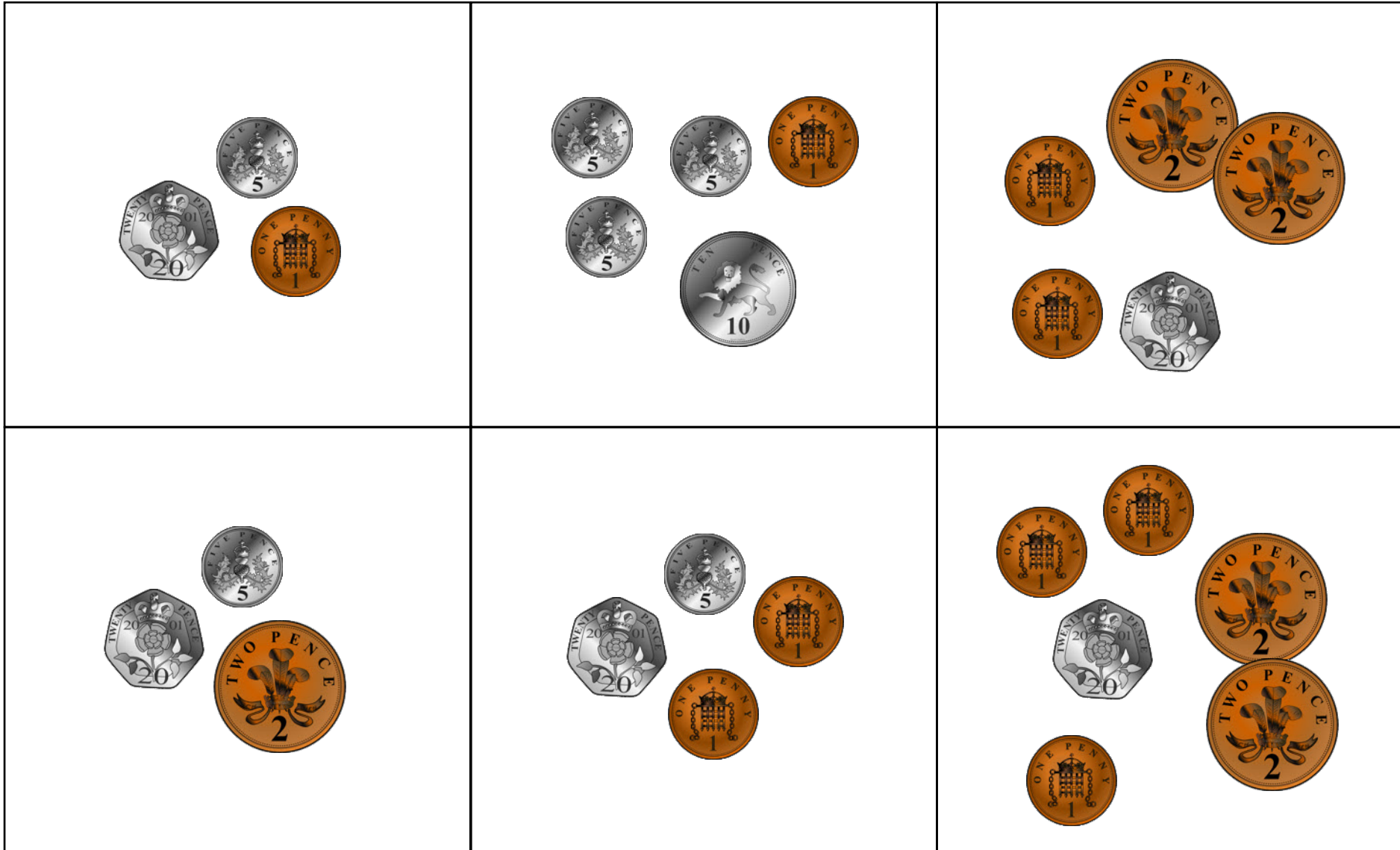
**Money cards:** cut these out for children to match to the toy boards.



# Toy shop bingo!

(up to 50 pence)

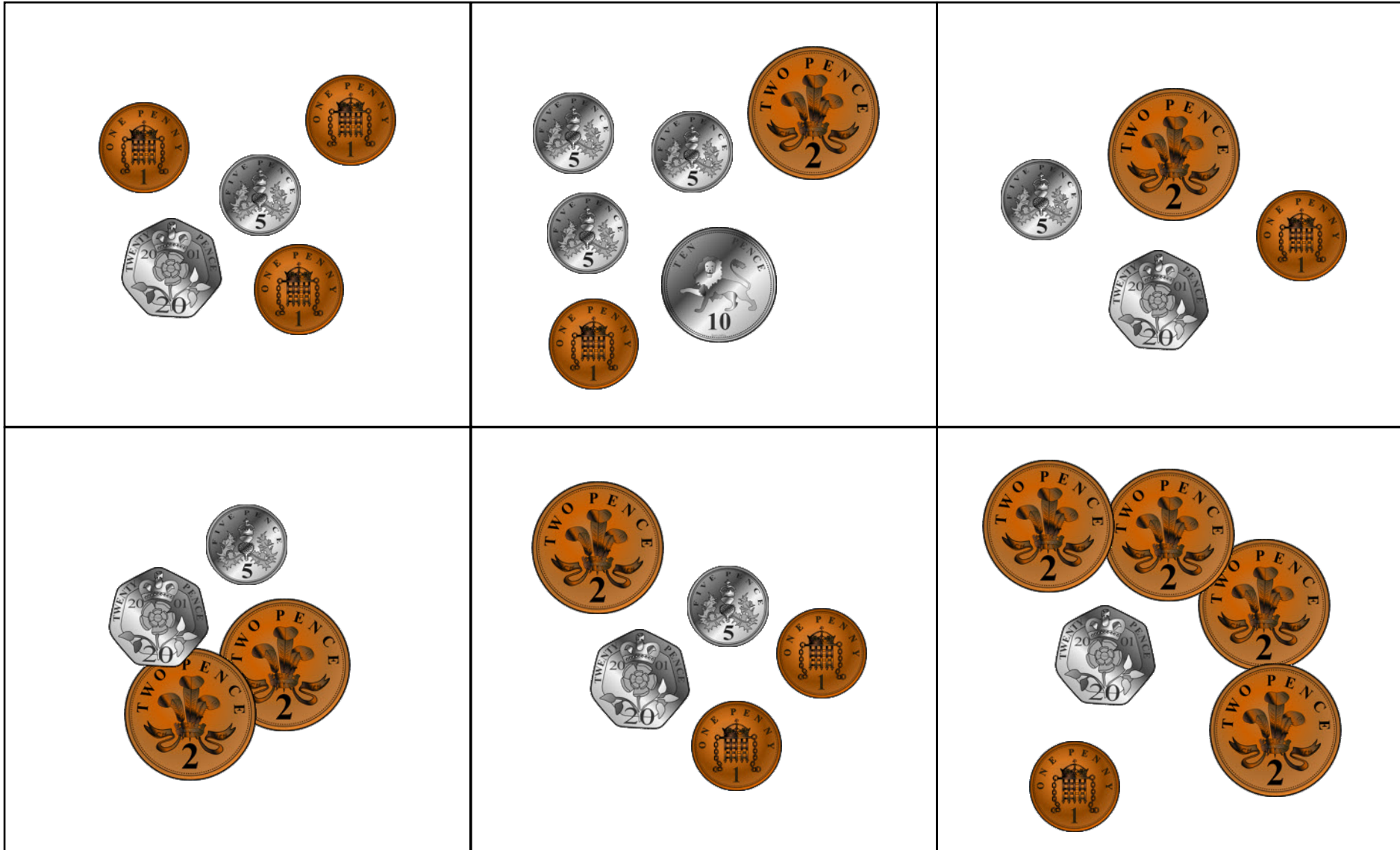
**Money cards:** cut these out for children to match to the toy boards.



# Toy shop bingo!

(up to 50 pence)

**Money cards:** cut these out for children to match to the toy boards.

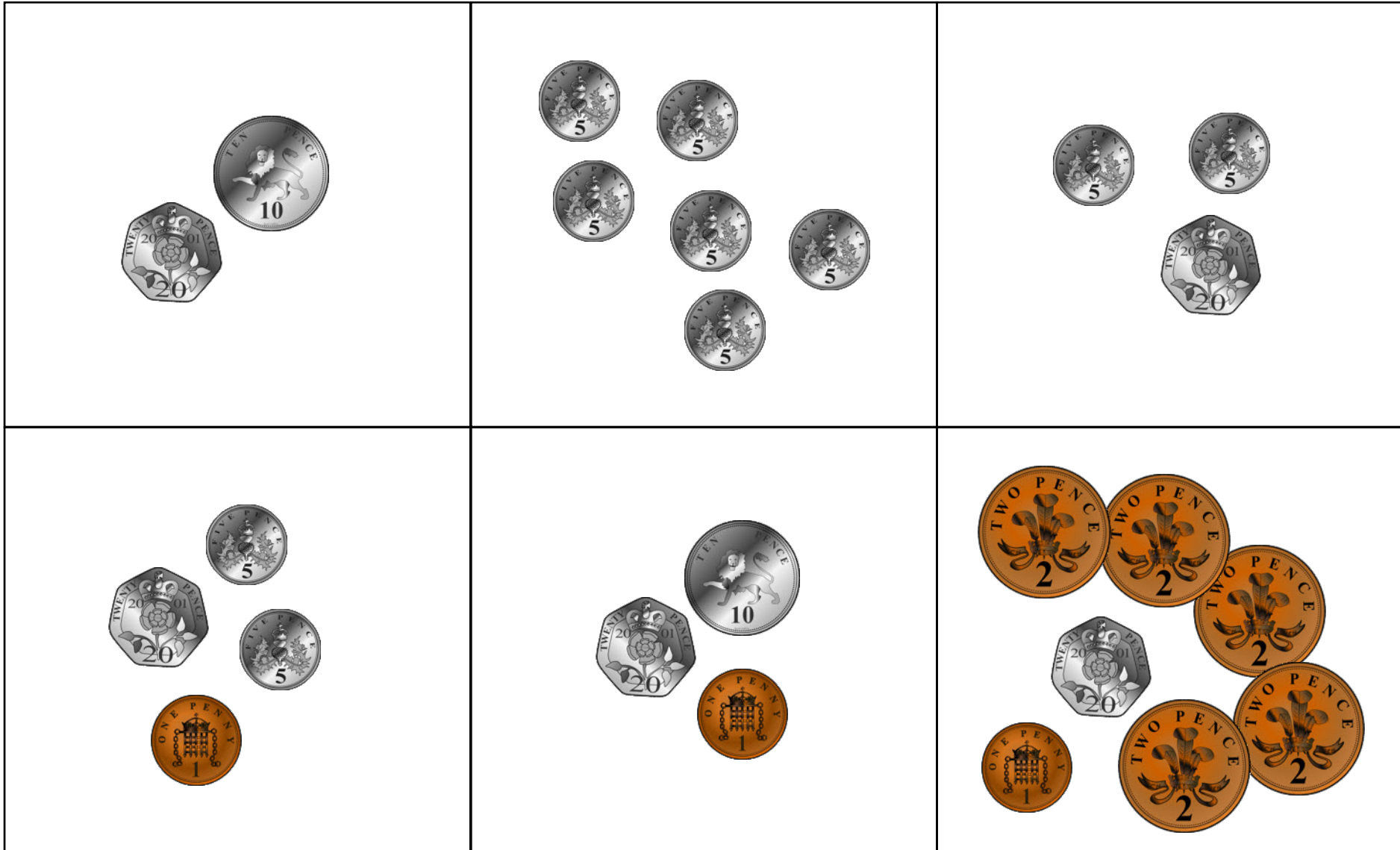




# Toy shop bingo!

(up to 50 pence)

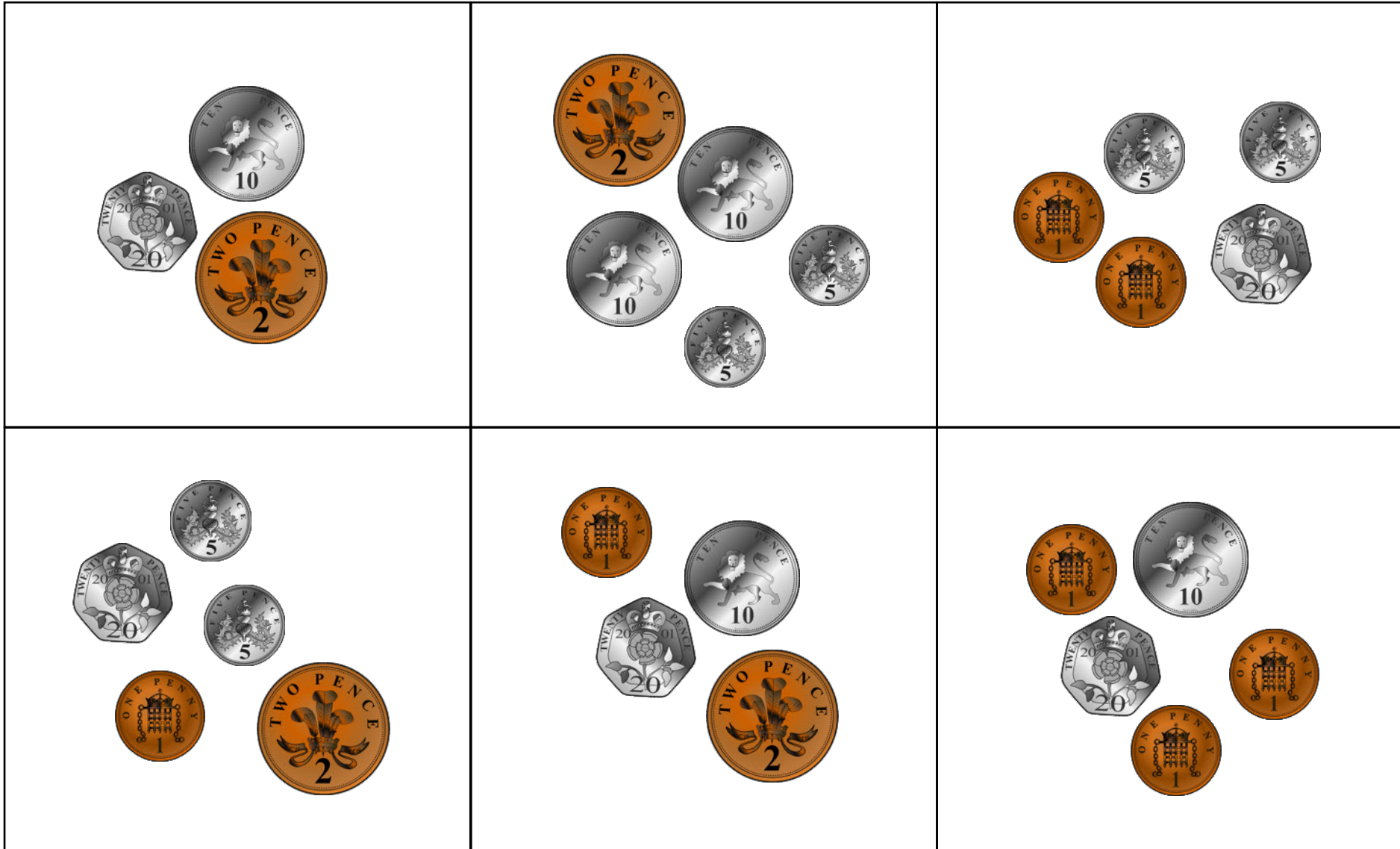
**Money cards:** cut these out for children to match to the toy boards.



# Toy shop bingo!

(up to 50 pence)

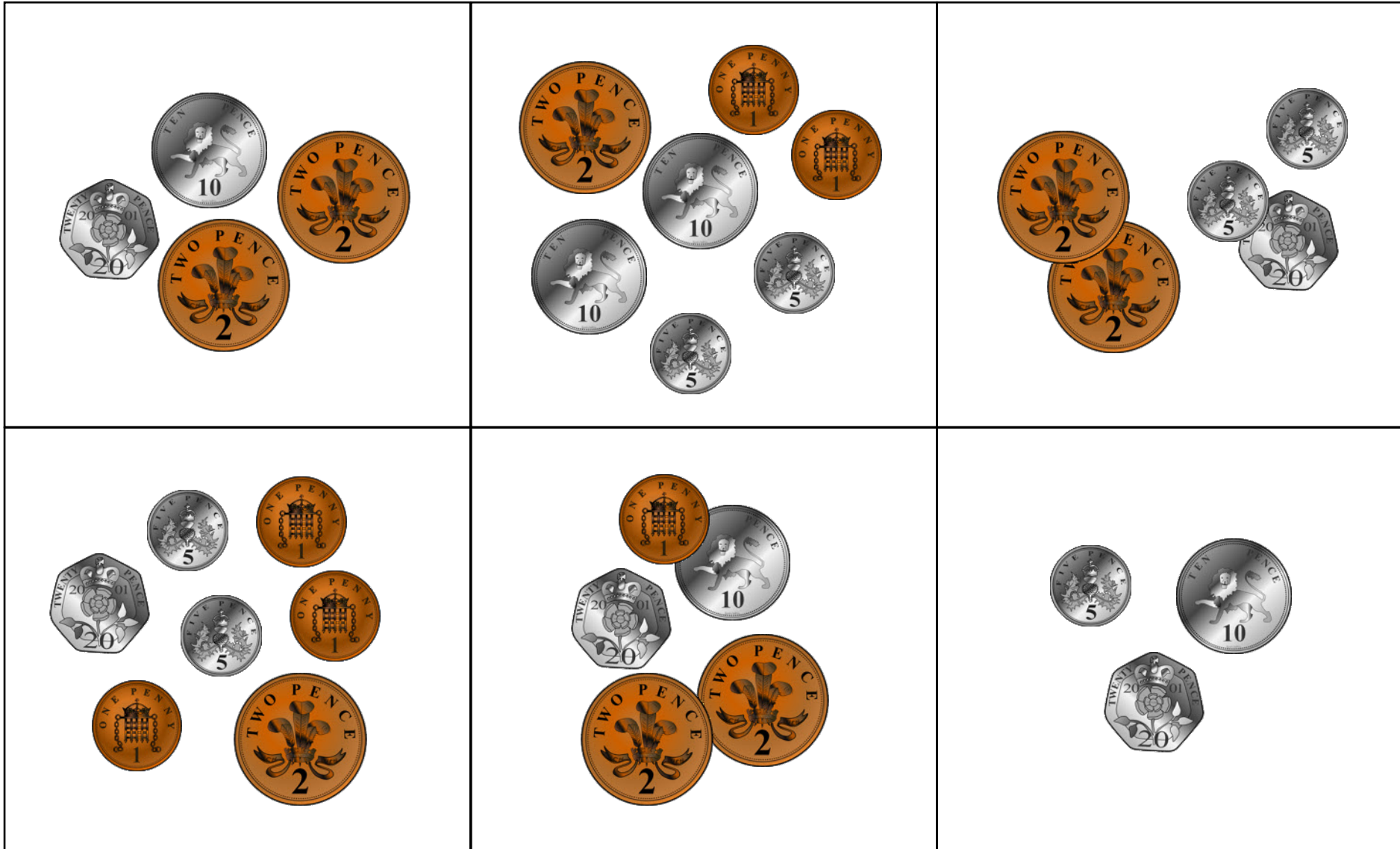
**Money cards:** cut these out for children to match to the toy boards.



# Toy shop bingo!

(up to 50 pence)

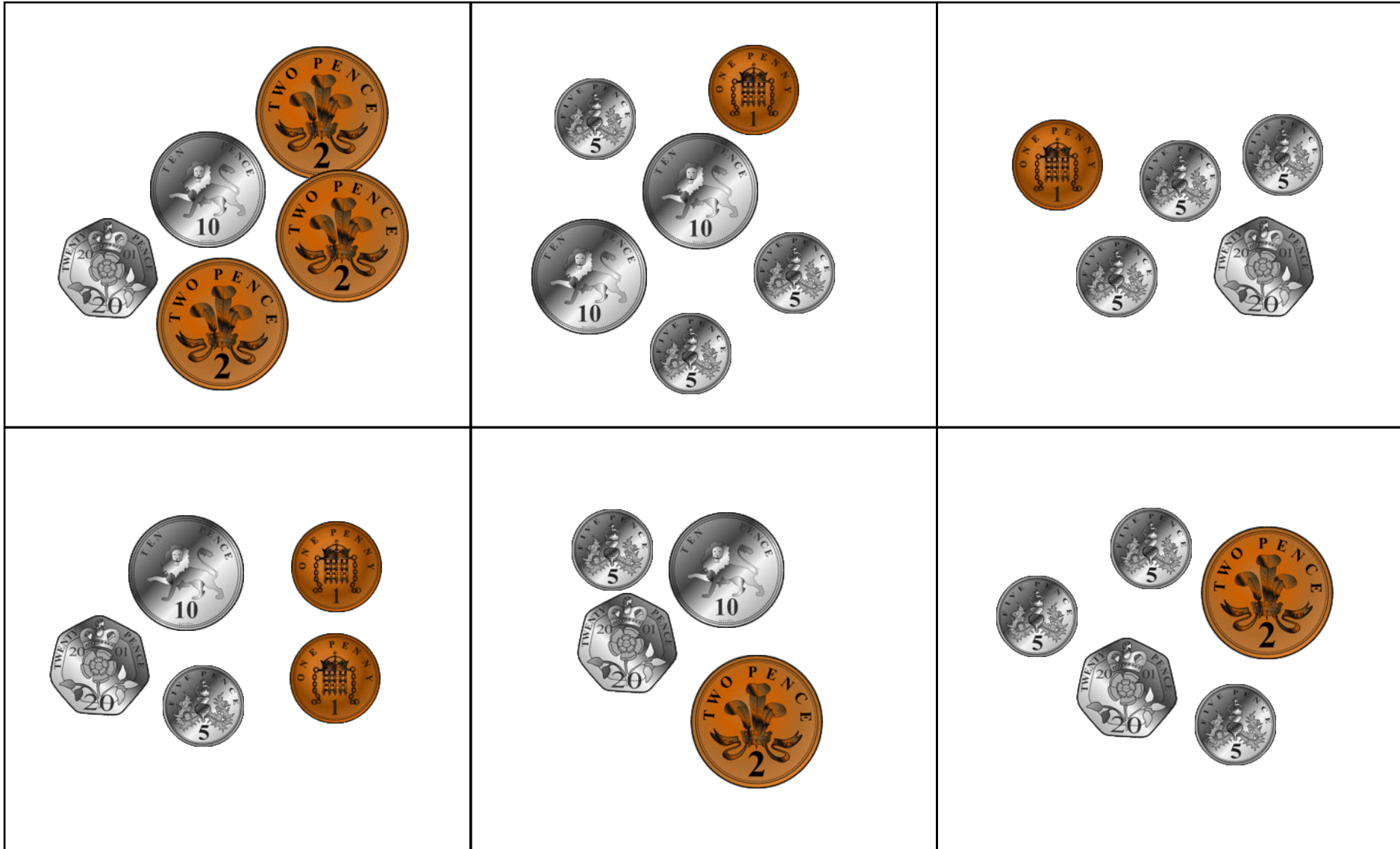
**Money cards:** cut these out for children to match to the toy boards.



# Toy shop bingo!

(up to 50 pence)

**Money cards:** cut these out for children to match to the toy boards.

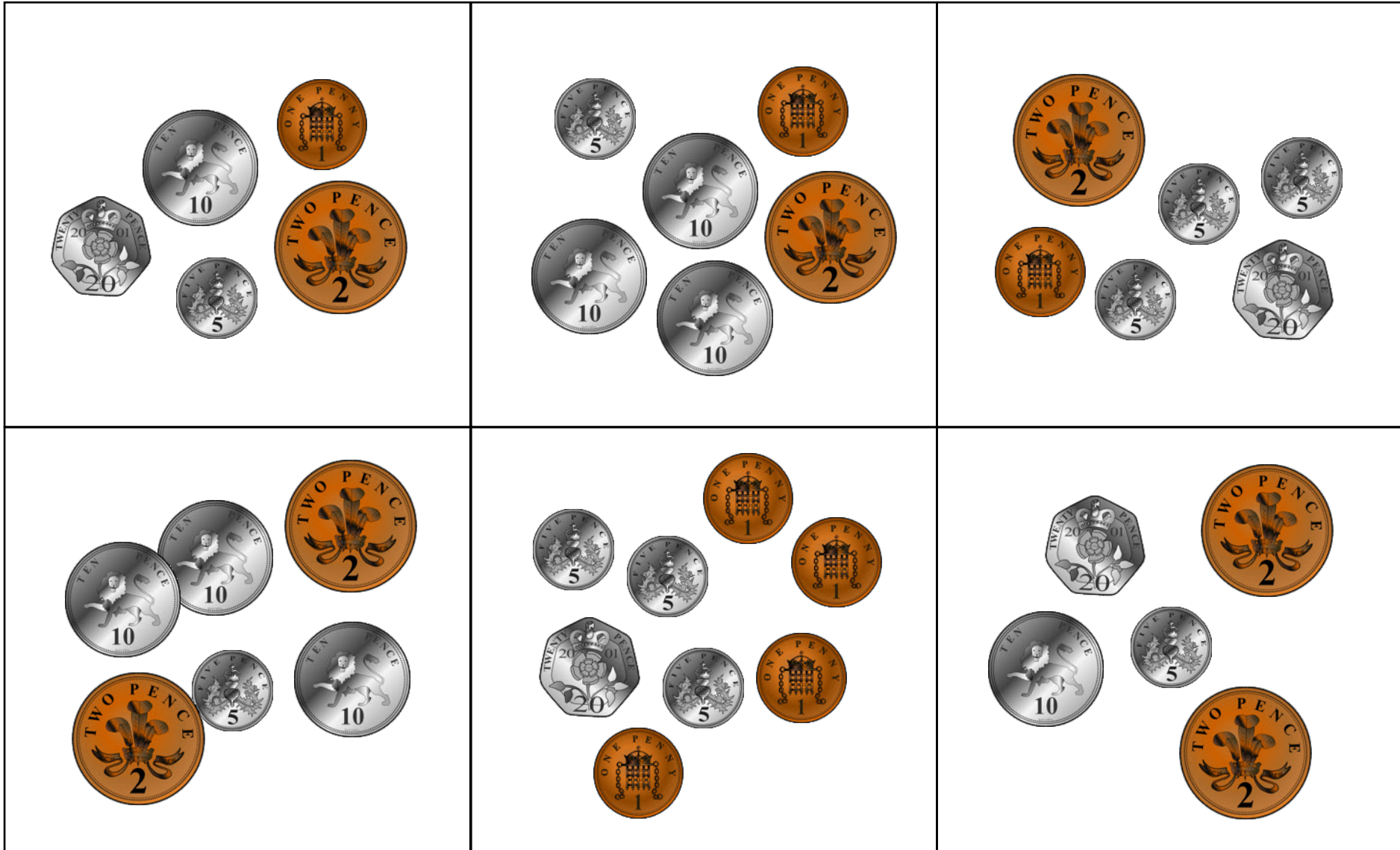




# Toy shop bingo!

(up to 50 pence)

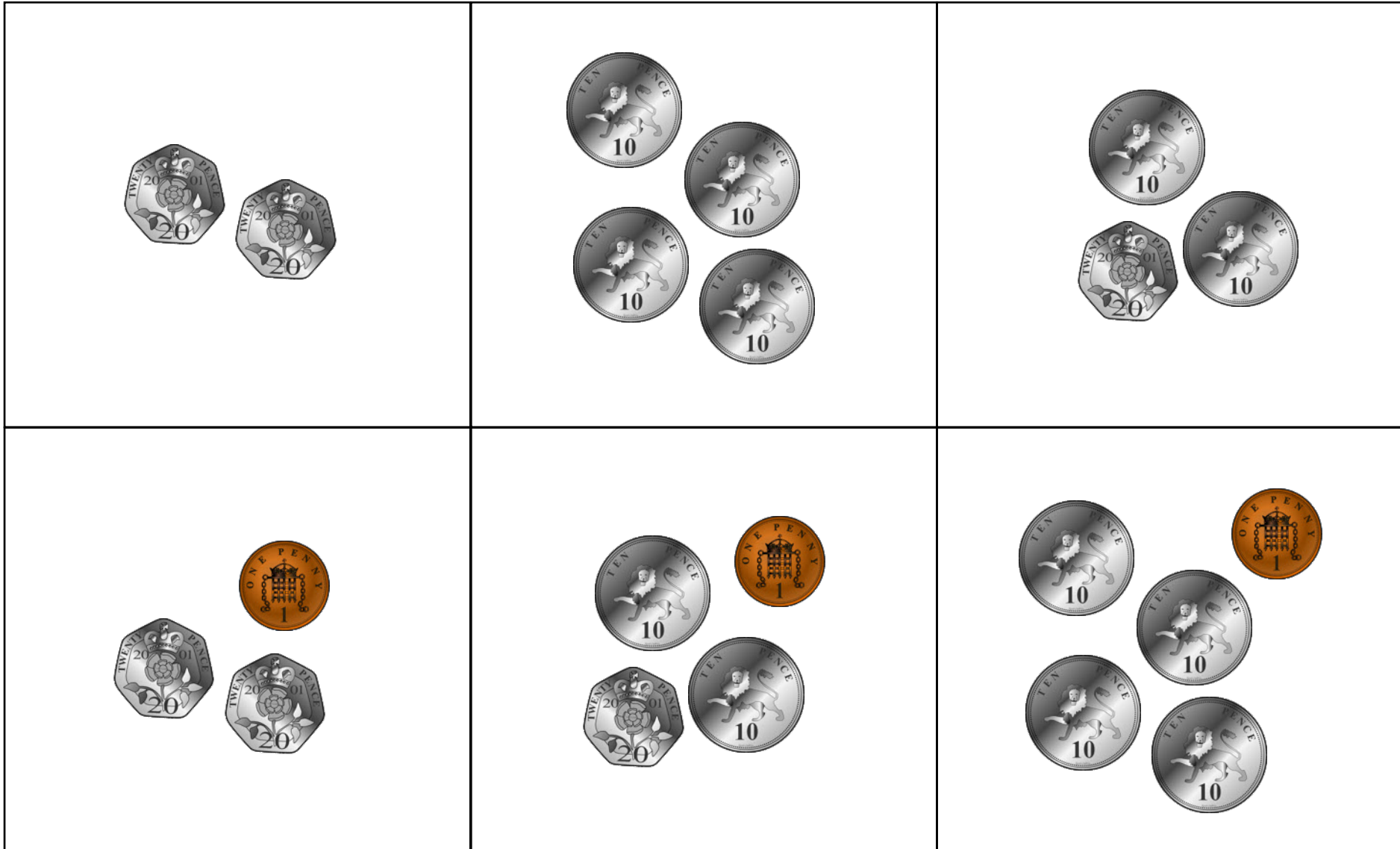
**Money cards:** cut these out for children to match to the toy boards.



# Toy shop bingo!

(up to 50 pence)

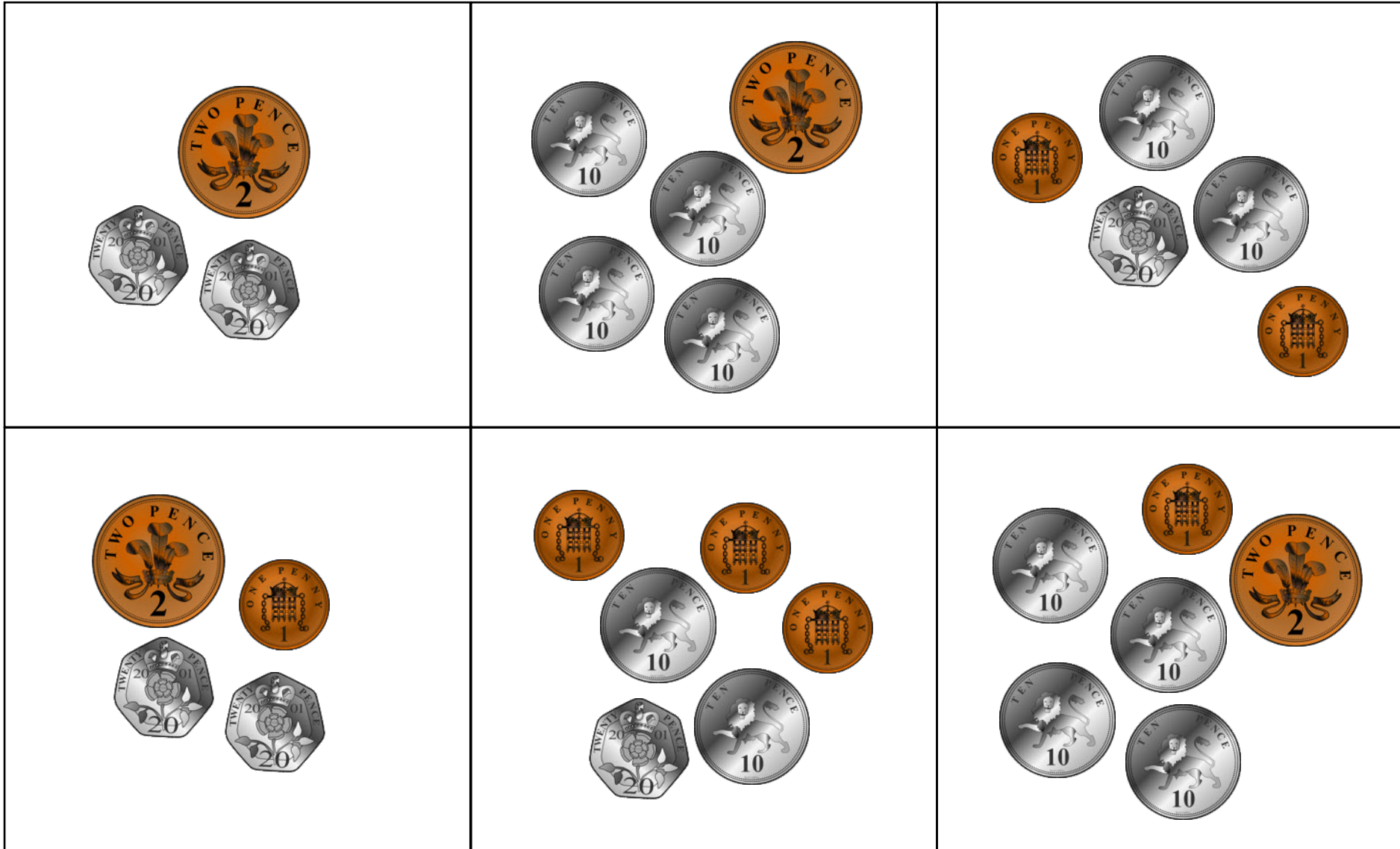
**Money cards:** cut these out for children to match to the toy boards.



# Toy shop bingo!

(up to 50 pence)

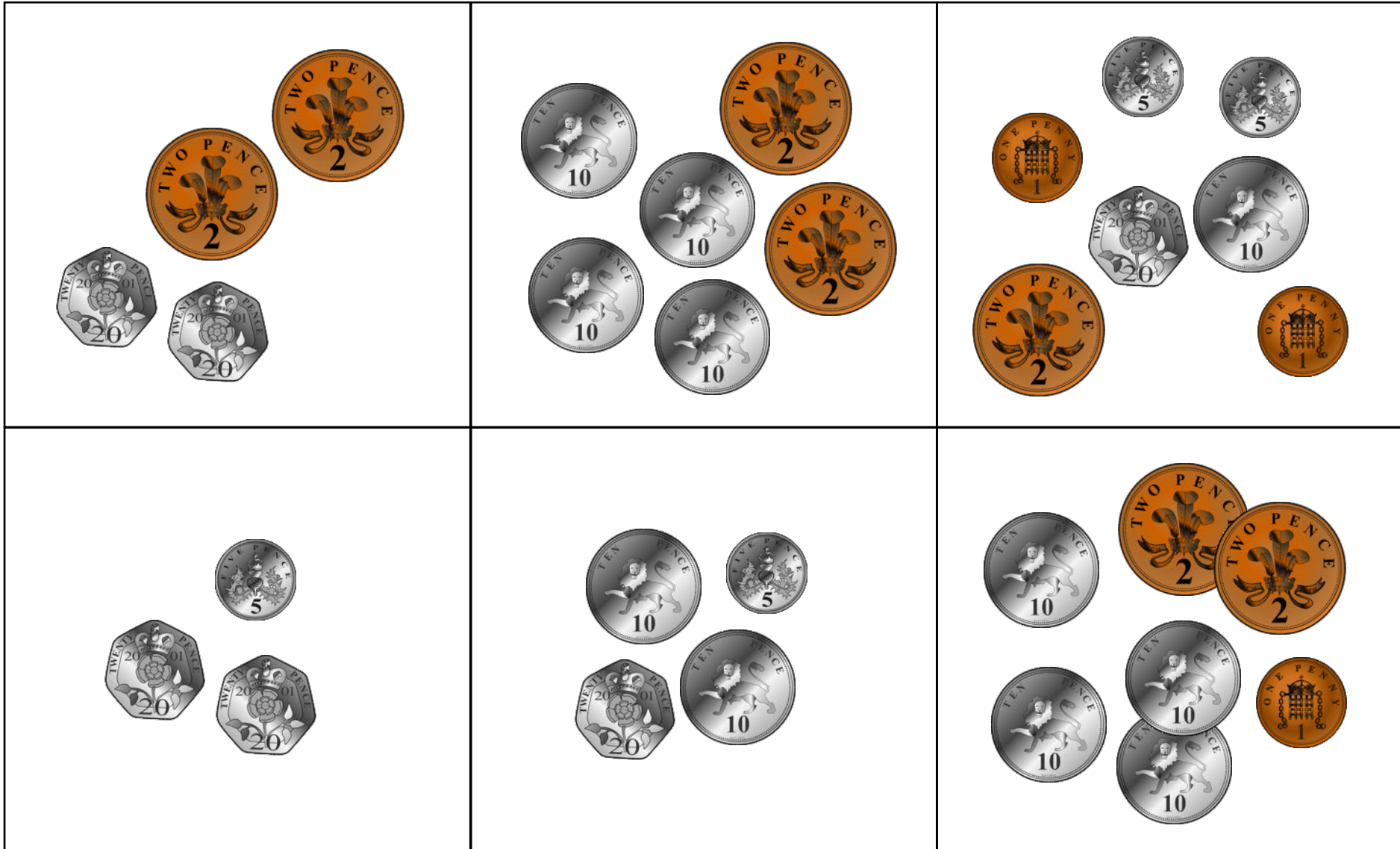
**Money cards:** cut these out for children to match to the toy boards.



# Toy shop bingo!

(up to 50 pence)

**Money cards:** cut these out for children to match to the toy boards.

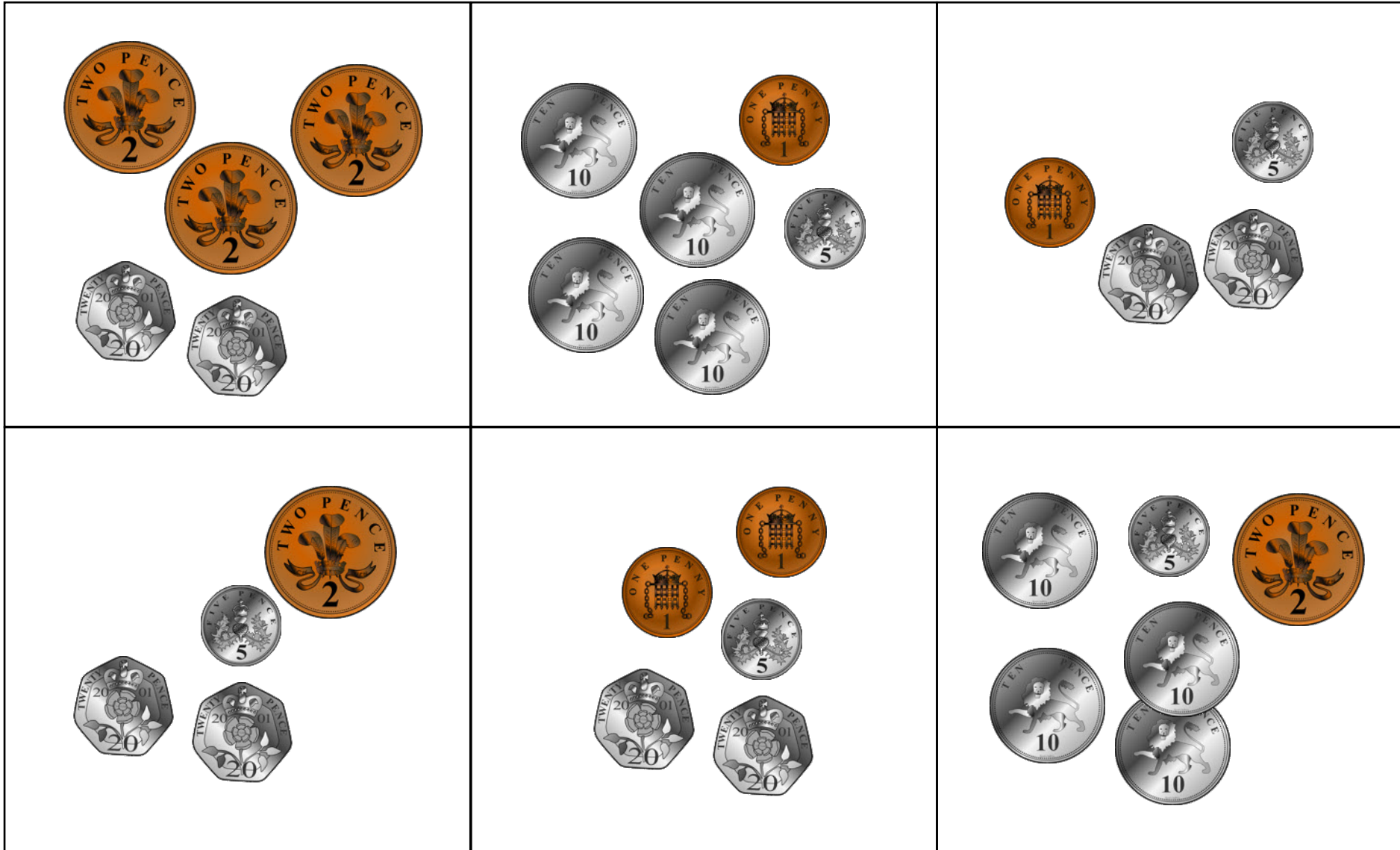




# Toy shop bingo!

(up to 50 pence)

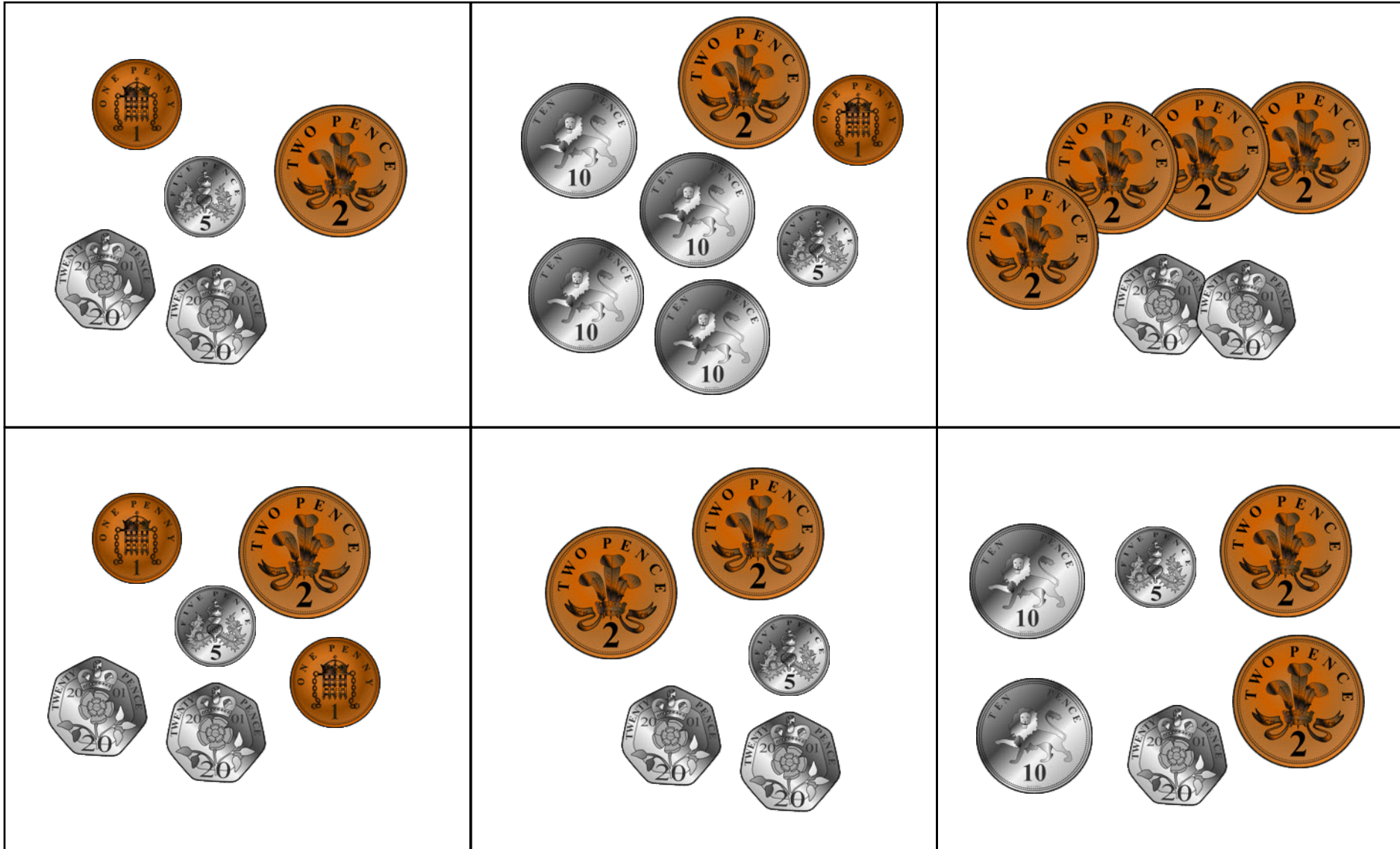
**Money cards:** cut these out for children to match to the toy boards.



# Toy shop bingo!

(up to 50 pence)

**Money cards:** cut these out for children to match to the toy boards.



# Toy shop bingo!

(up to 50 pence)

**Money cards:** cut these out for children to match to the toy boards.

