

Where is the present?



The present is **under** the tree.

Where is the present?



The present is **beside** the tree.

Where is the present?



The present is **next to** the tree.

Where is the present?



The present is **in front of** the tree.

Where is the present?



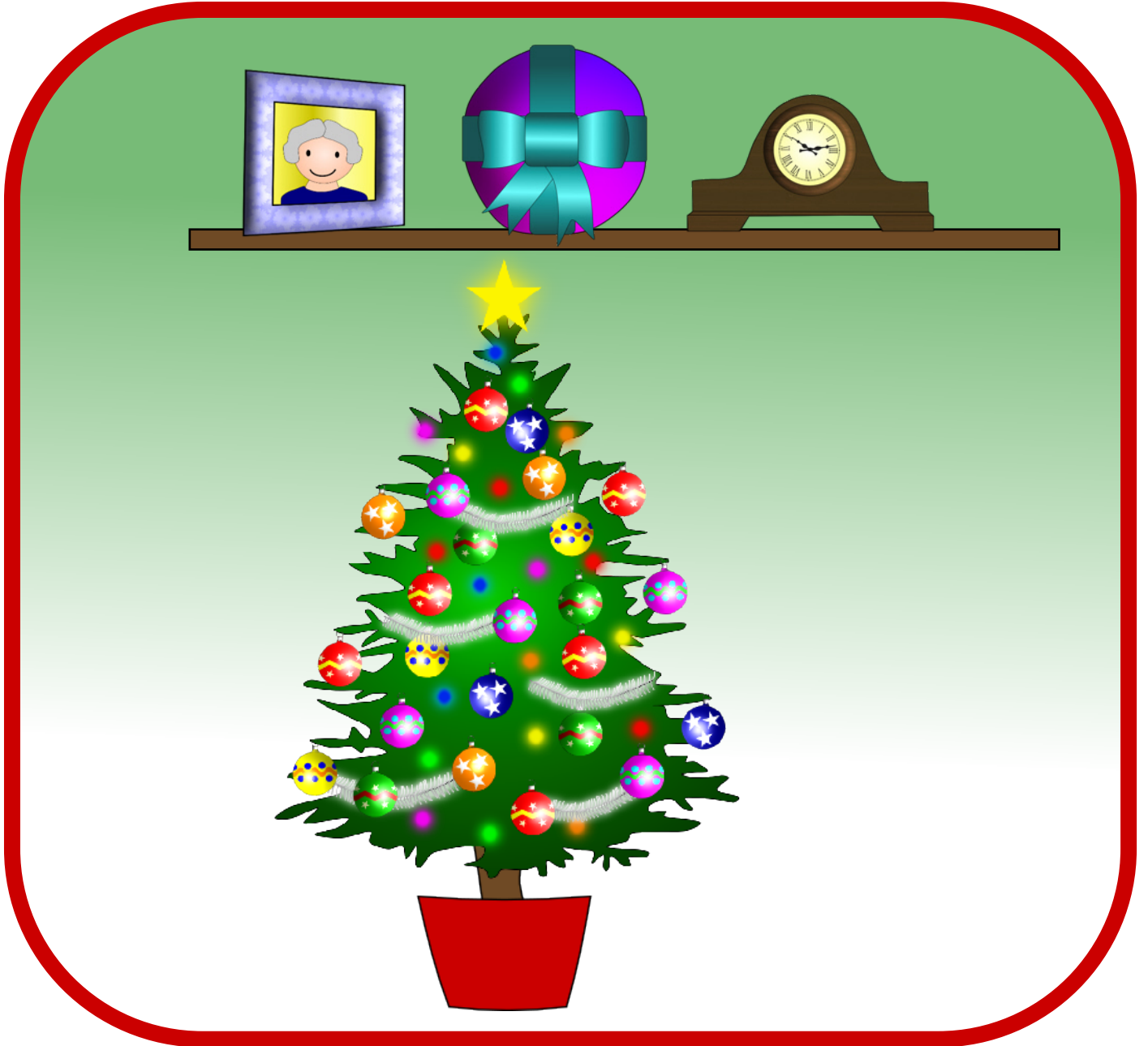
The present is **behind** the tree.

Where is the present?



The present is **on** the tree.

Where is the present?



The present is **above** the tree.