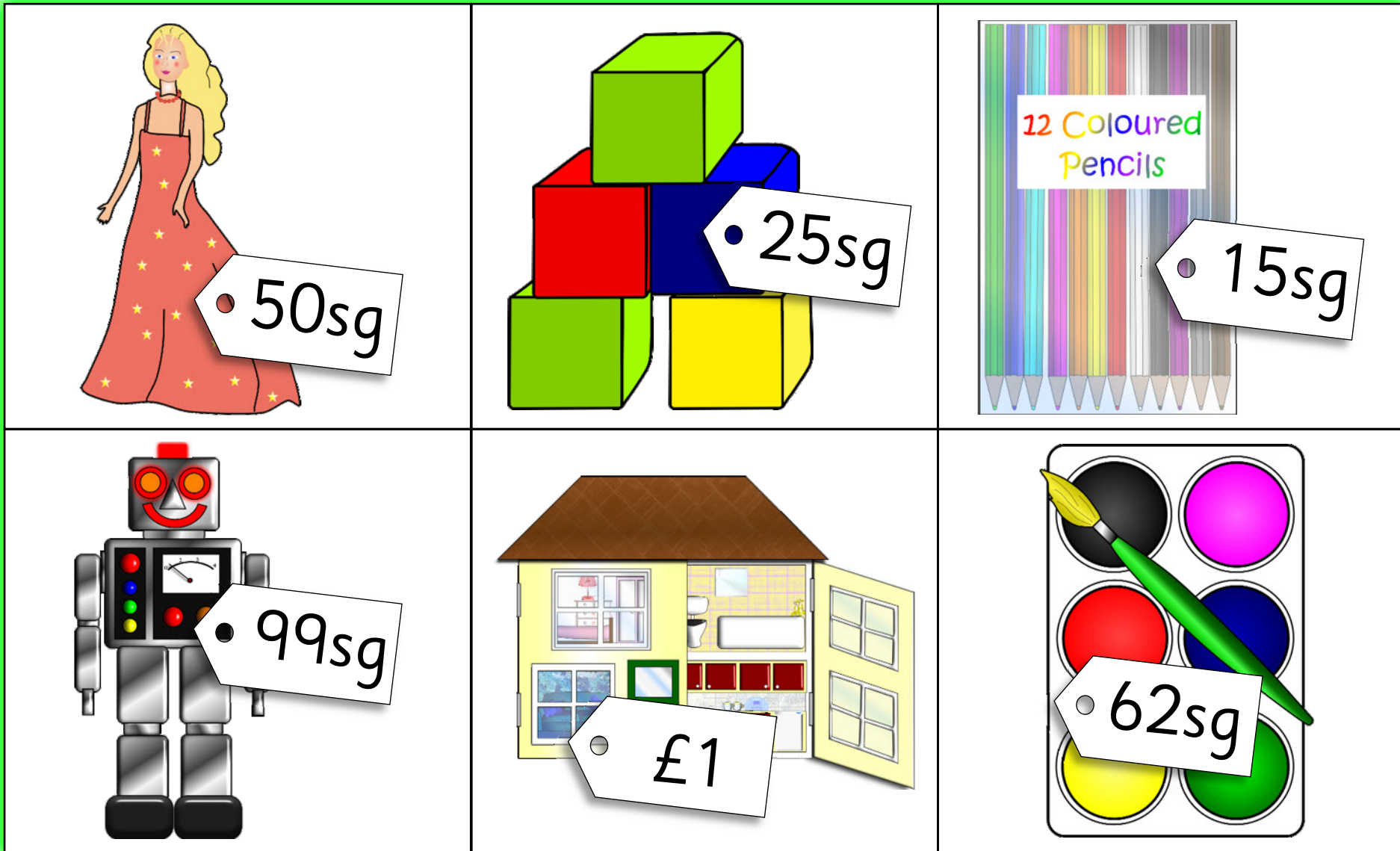


Toy shop bingo!

(up to 1 pound)

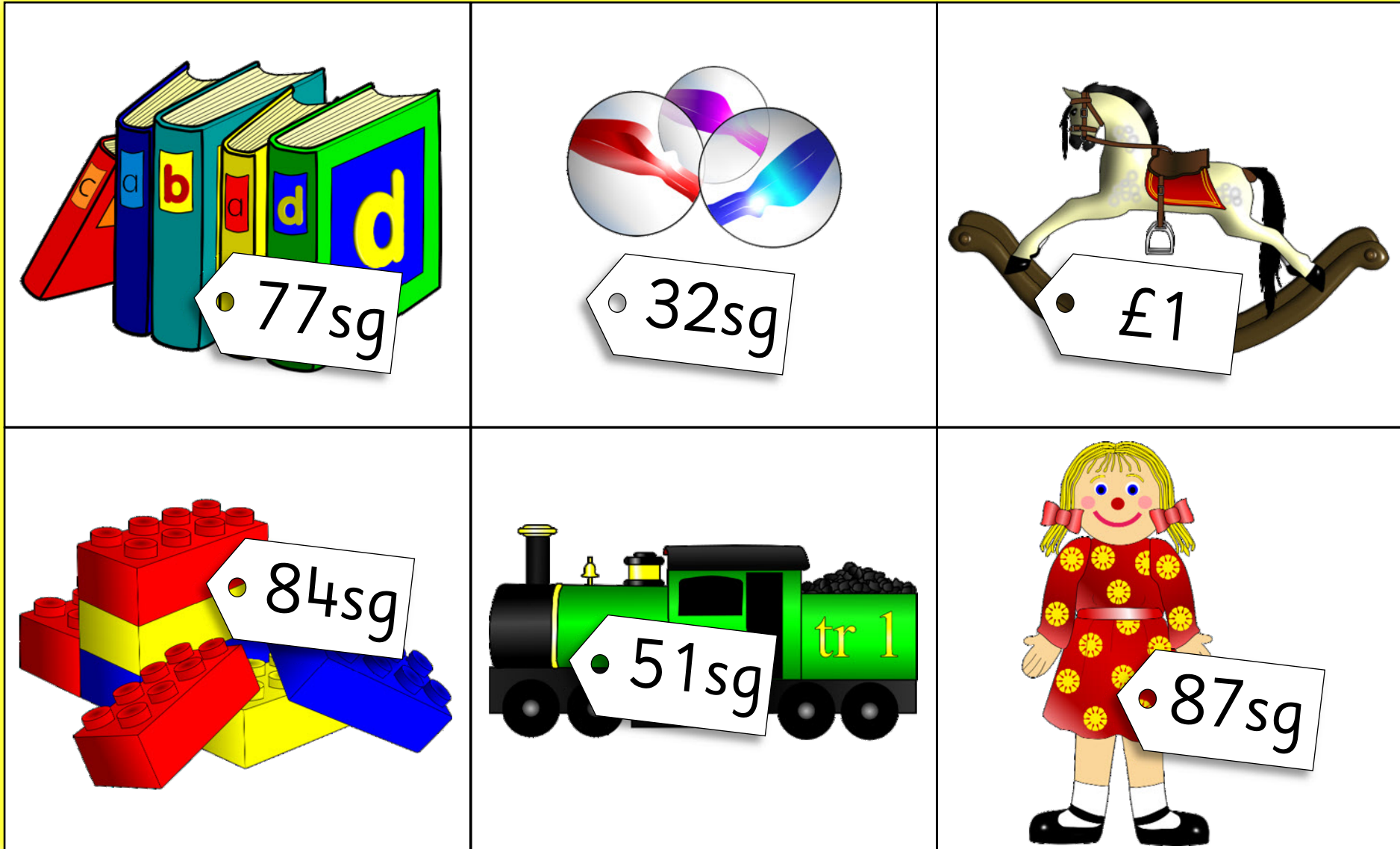
Toys board: children take turns to turn over a money card and, if possible, match it to a same-value toy on their board.
First to cover their board shouts "BINGO!"



Toy shop bingo!

(up to 1 pound)

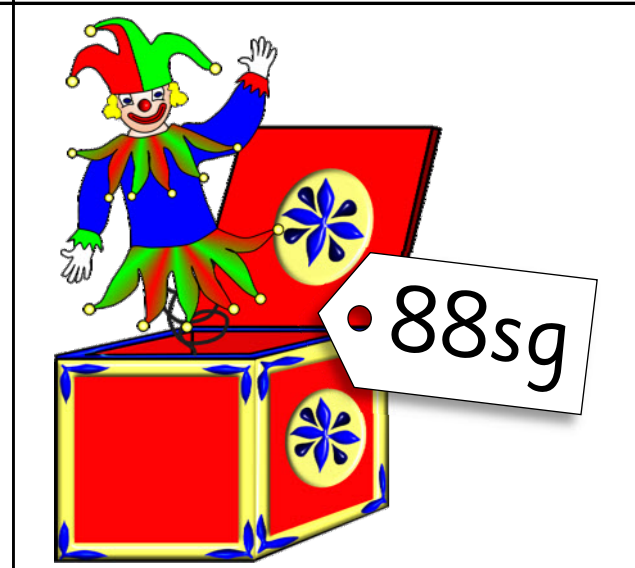
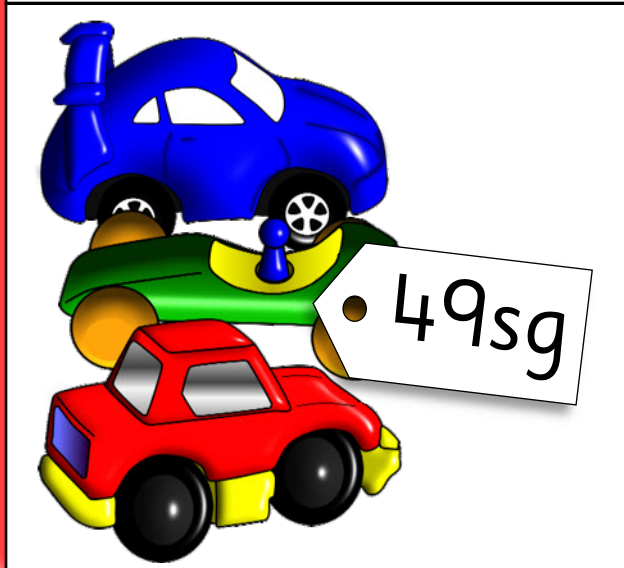
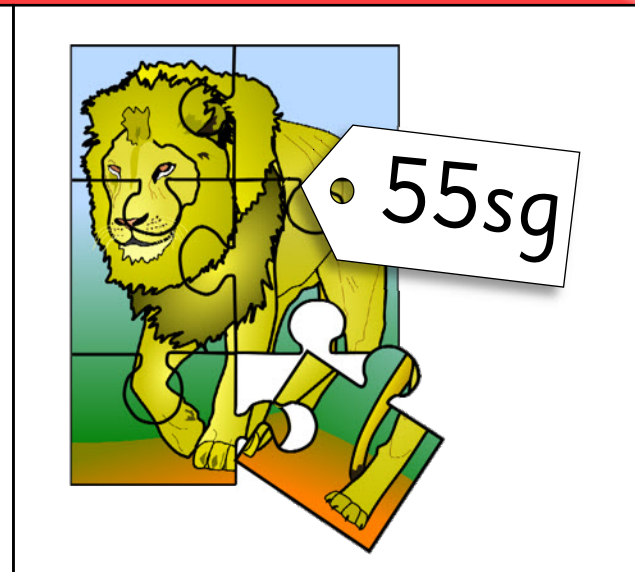
Toys board: children take turns to turn over a money card and, if possible, match it to a same-value toy on their board.
First to cover their board shouts "BINGO!"



Toy shop bingo!

(up to 1 pound)

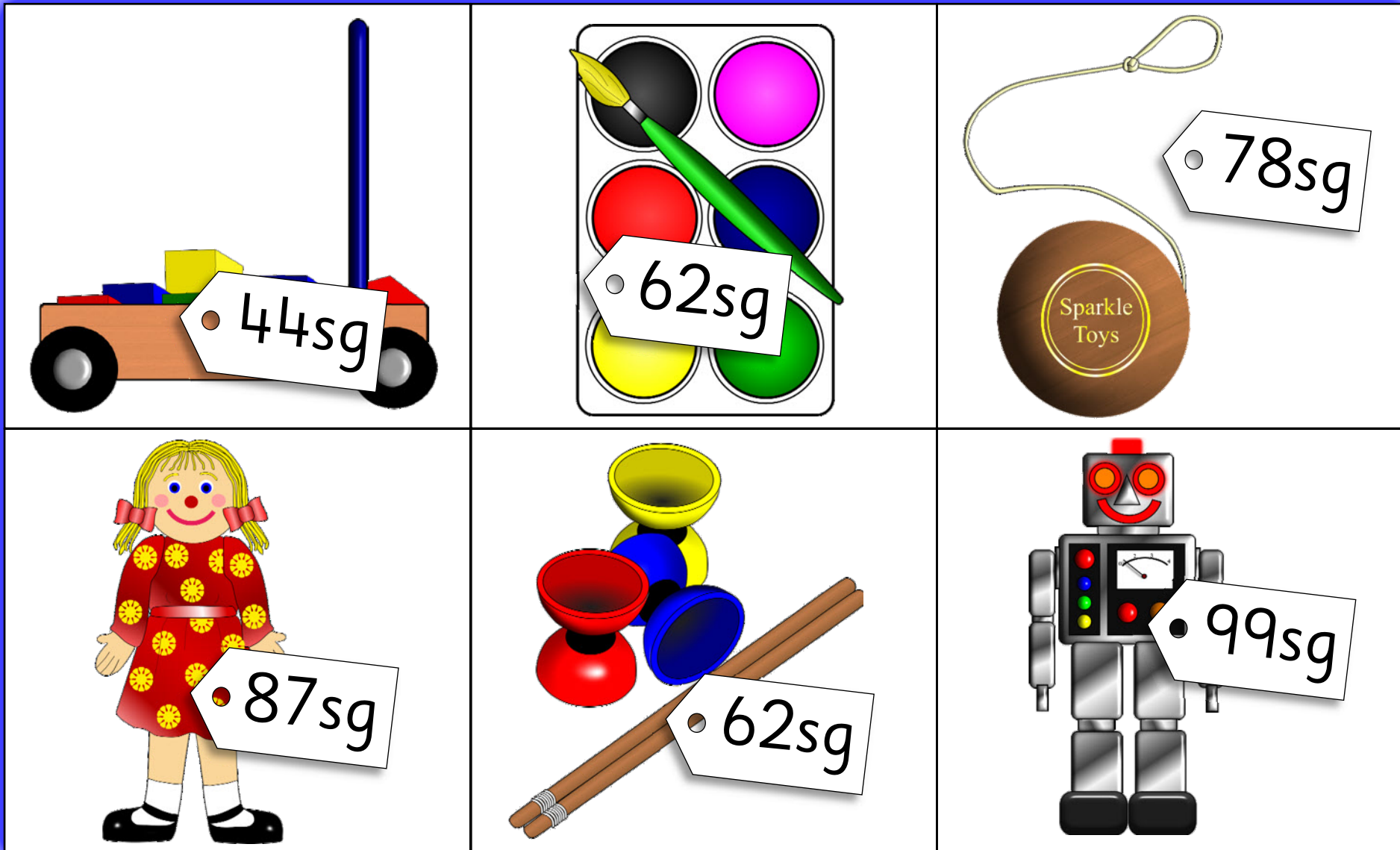
Toys board: children take turns to turn over a money card and, if possible, match it to a same-value toy on their board.
First to cover their board shouts "BINGO!"



Toy shop bingo!

(up to 1 pound)

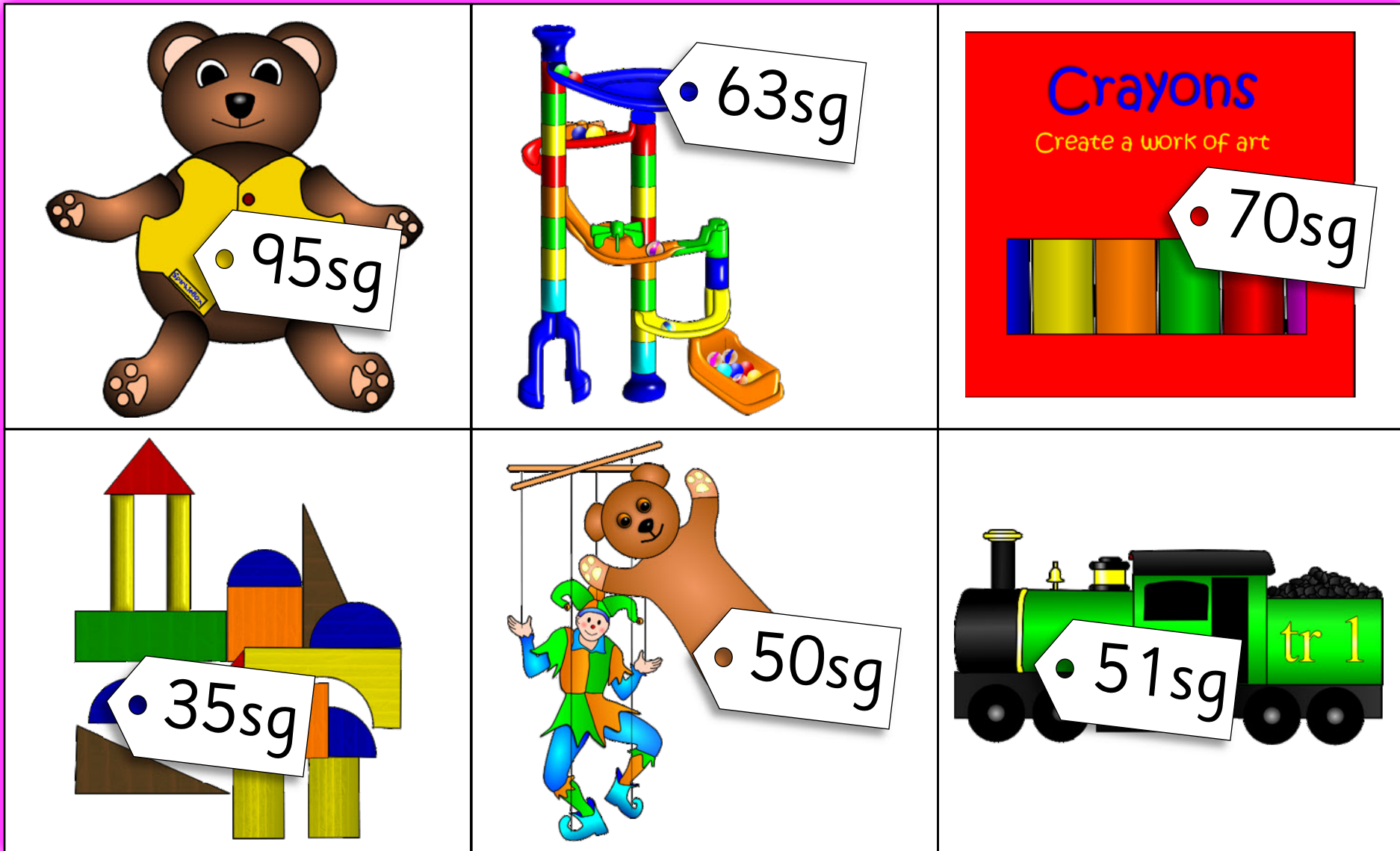
Toys board: children take turns to turn over a money card and, if possible, match it to a same-value toy on their board.
First to cover their board shouts "BINGO!"



Toy shop bingo!

(up to 1 pound)

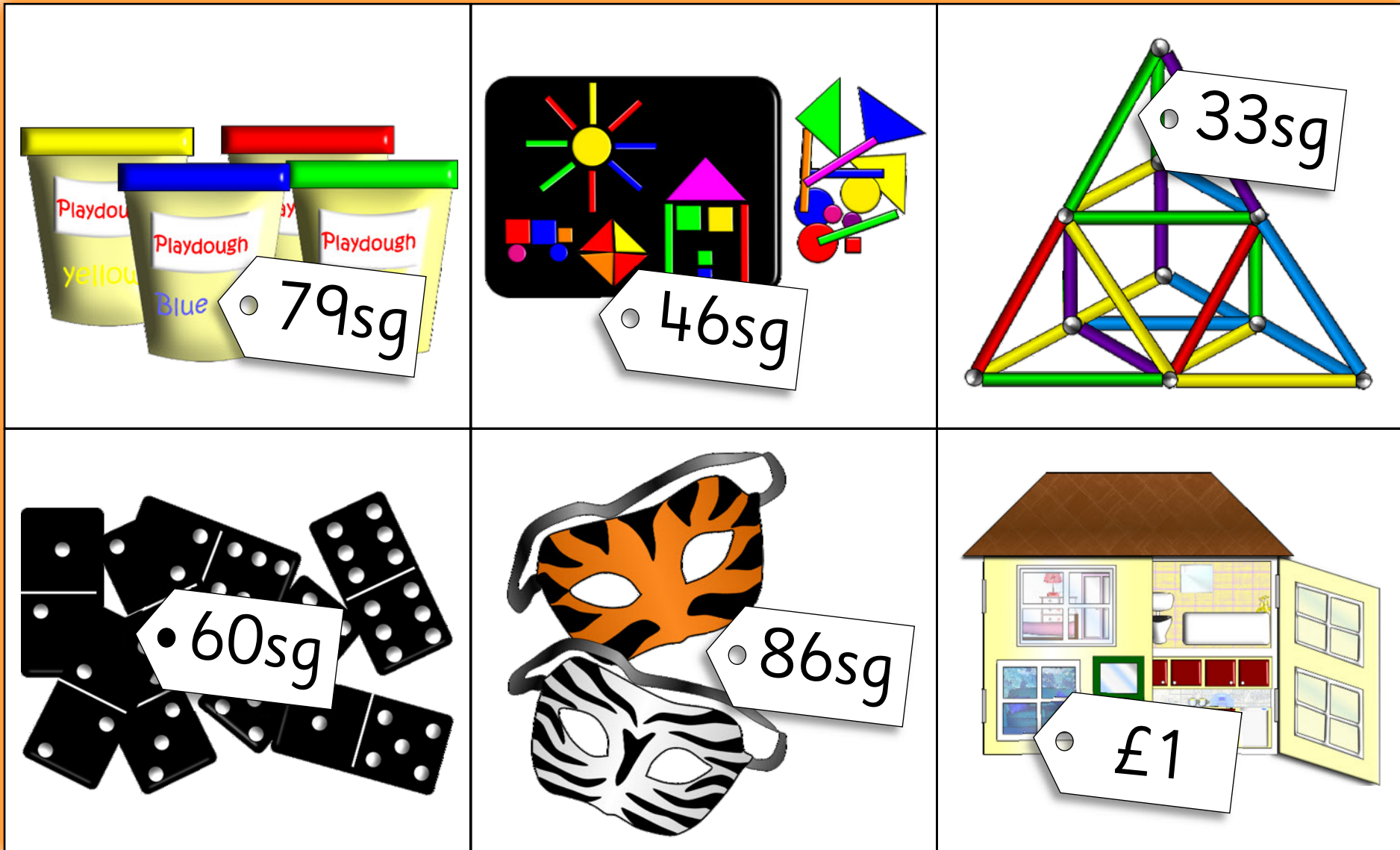
Toys board: children take turns to turn over a money card and, if possible, match it to a same-value toy on their board.
First to cover their board shouts "BINGO!"



Toy shop bingo!

(up to 1 pound)

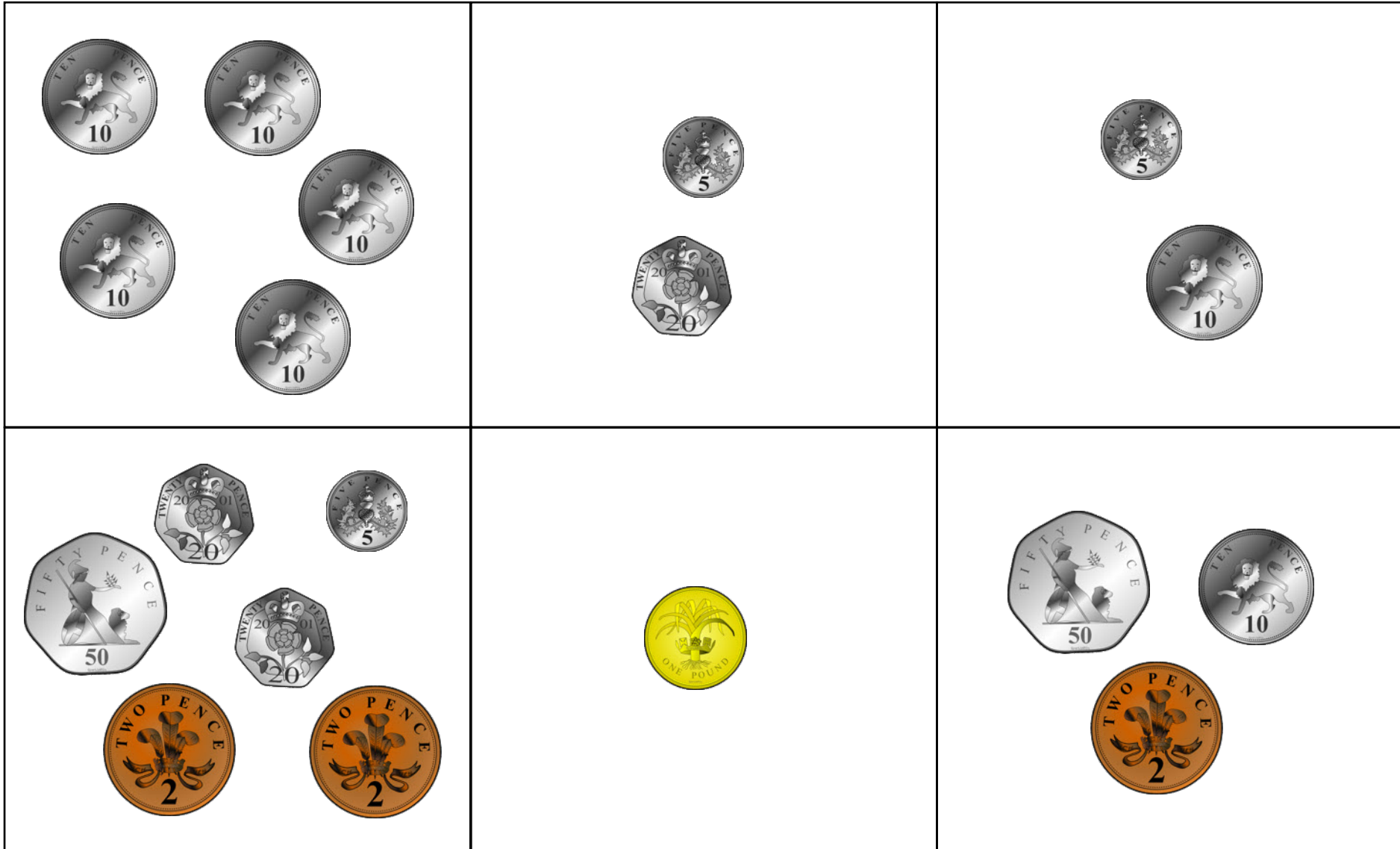
Toys board: children take turns to turn over a money card and, if possible, match it to a same-value toy on their board.
First to cover their board shouts "BINGO!"



Toy shop bingo!

(up to 1 pound)

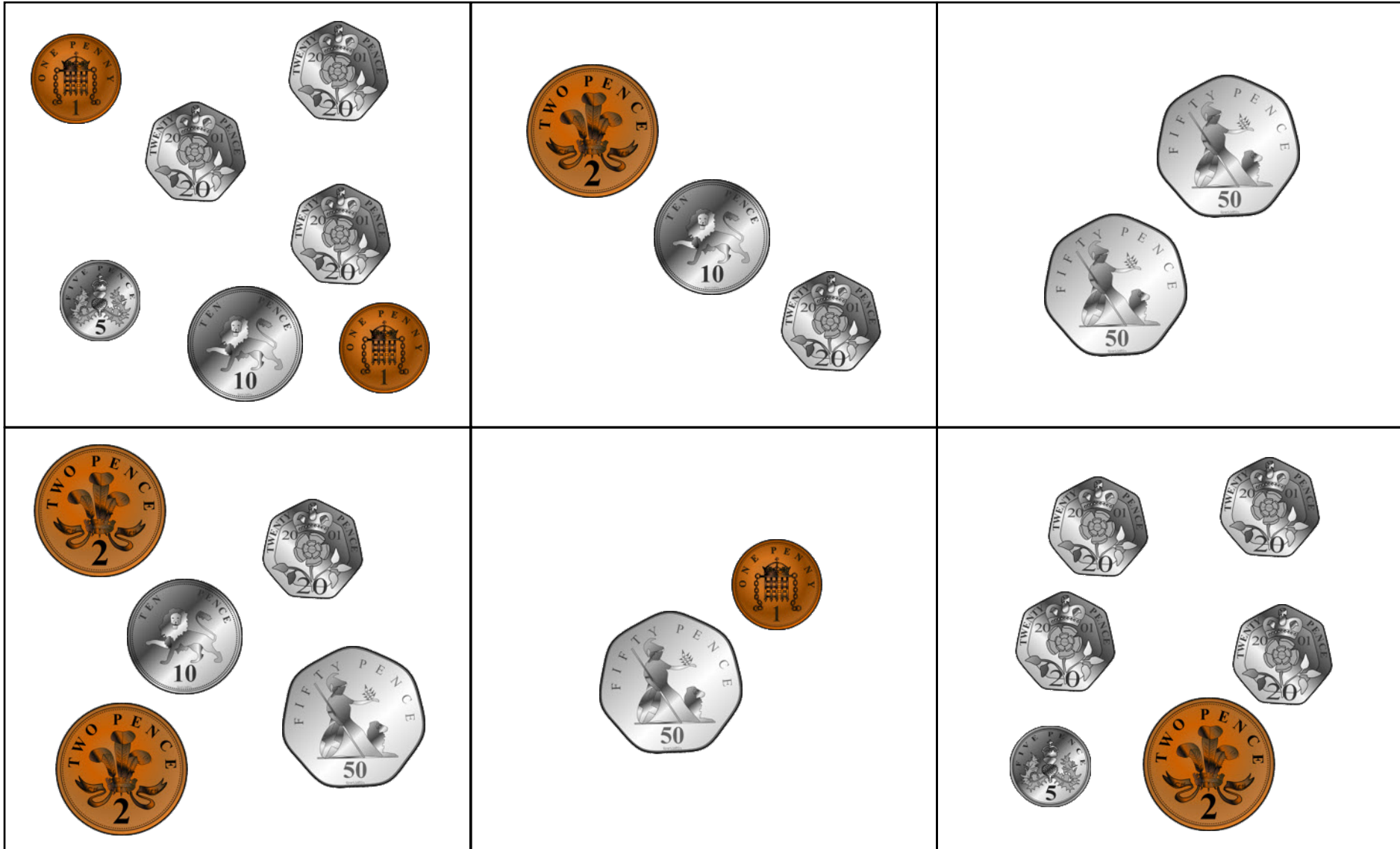
Money cards: cut these out for children to match to the toy boards.



Toy shop bingo!

(up to 1 pound)

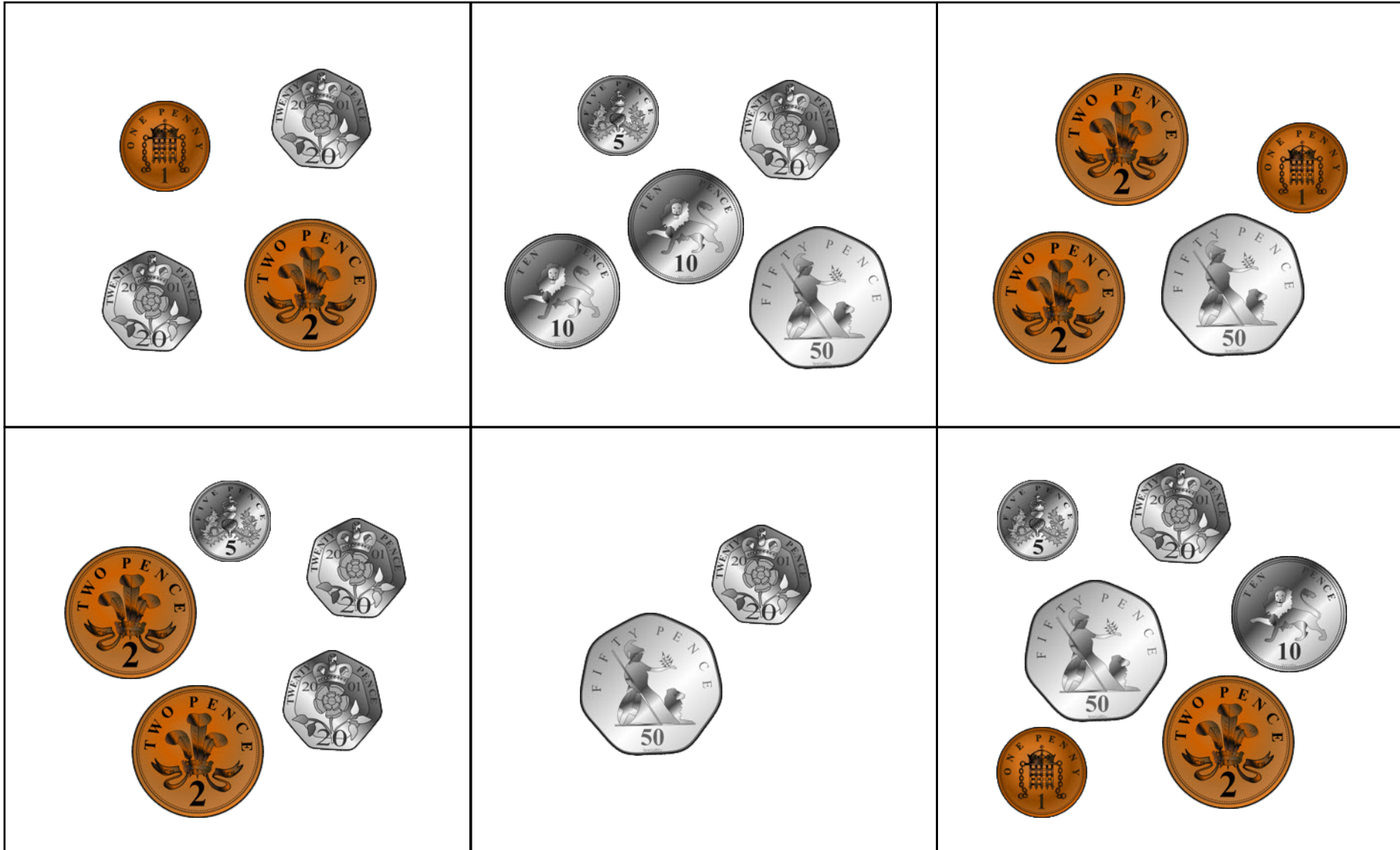
Money cards: cut these out for children to match to the toy boards.



Toy shop bingo!

(up to 1 pound)

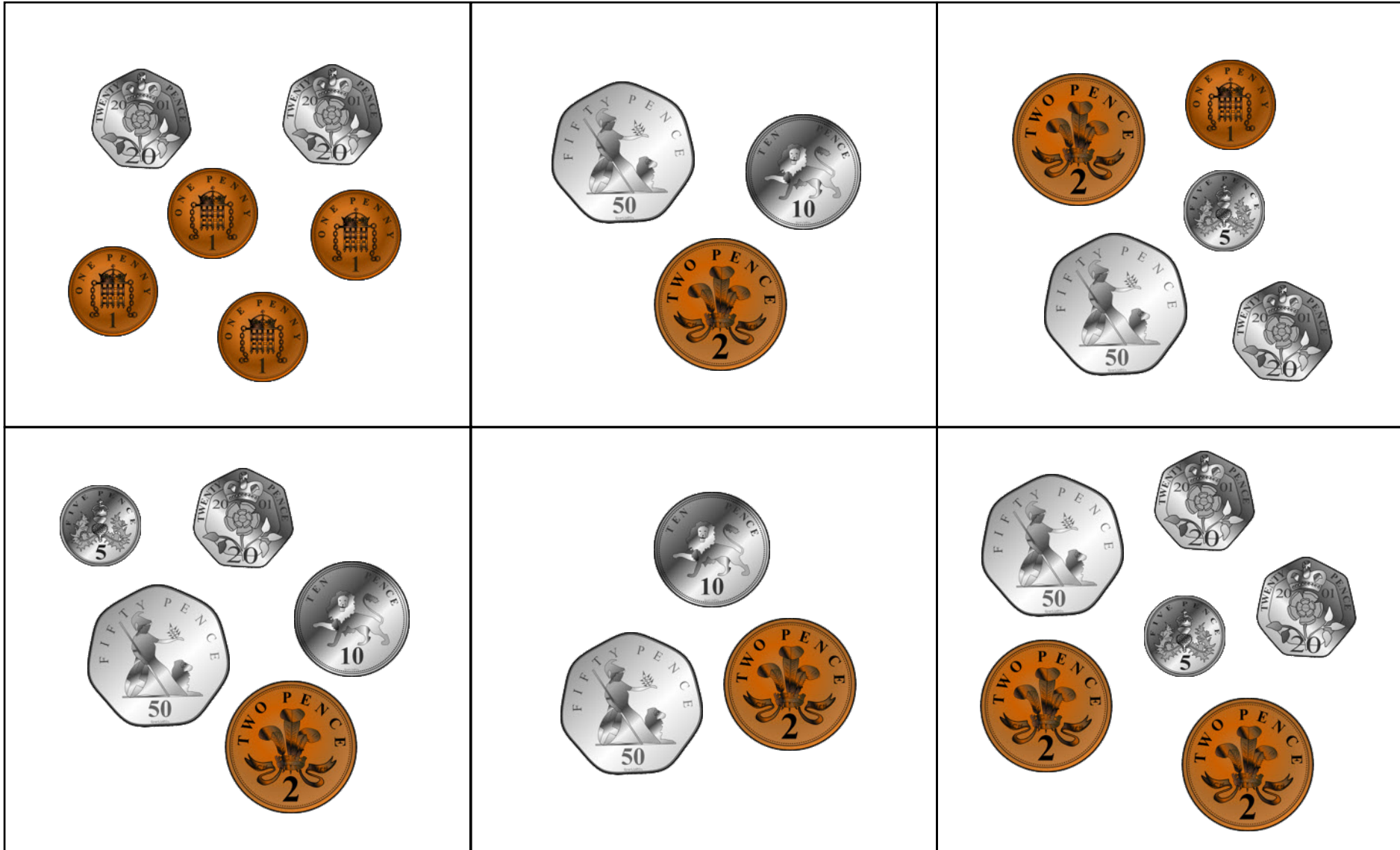
Money cards: cut these out for children to match to the toy boards.



Toy shop bingo!

(up to 1 pound)

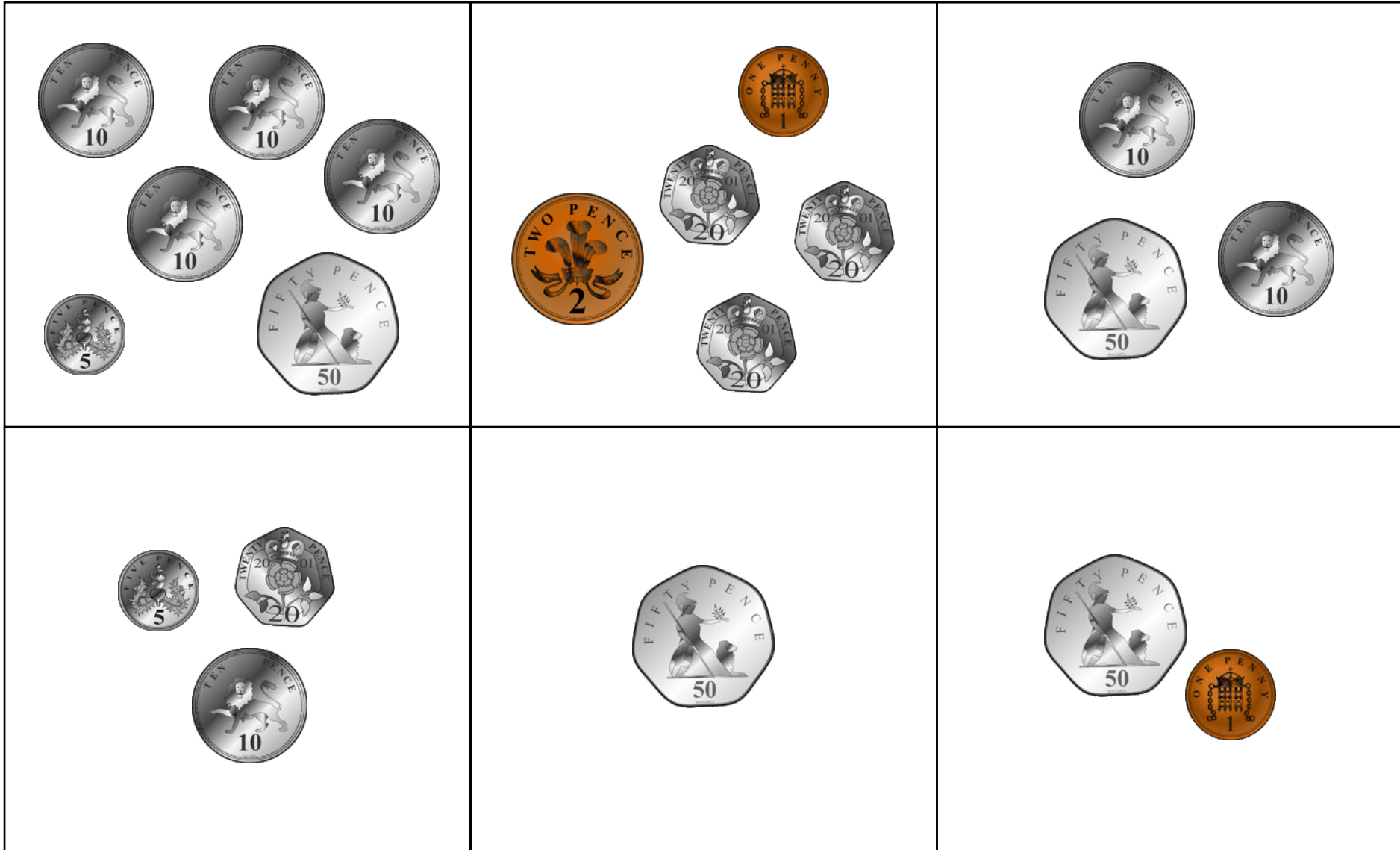
Money cards: cut these out for children to match to the toy boards.



Toy shop bingo!

(up to 1 pound)

Money cards: cut these out for children to match to the toy boards.



Toy shop bingo!

(up to 1 pound)

Money cards: cut these out for children to match to the toy boards.

