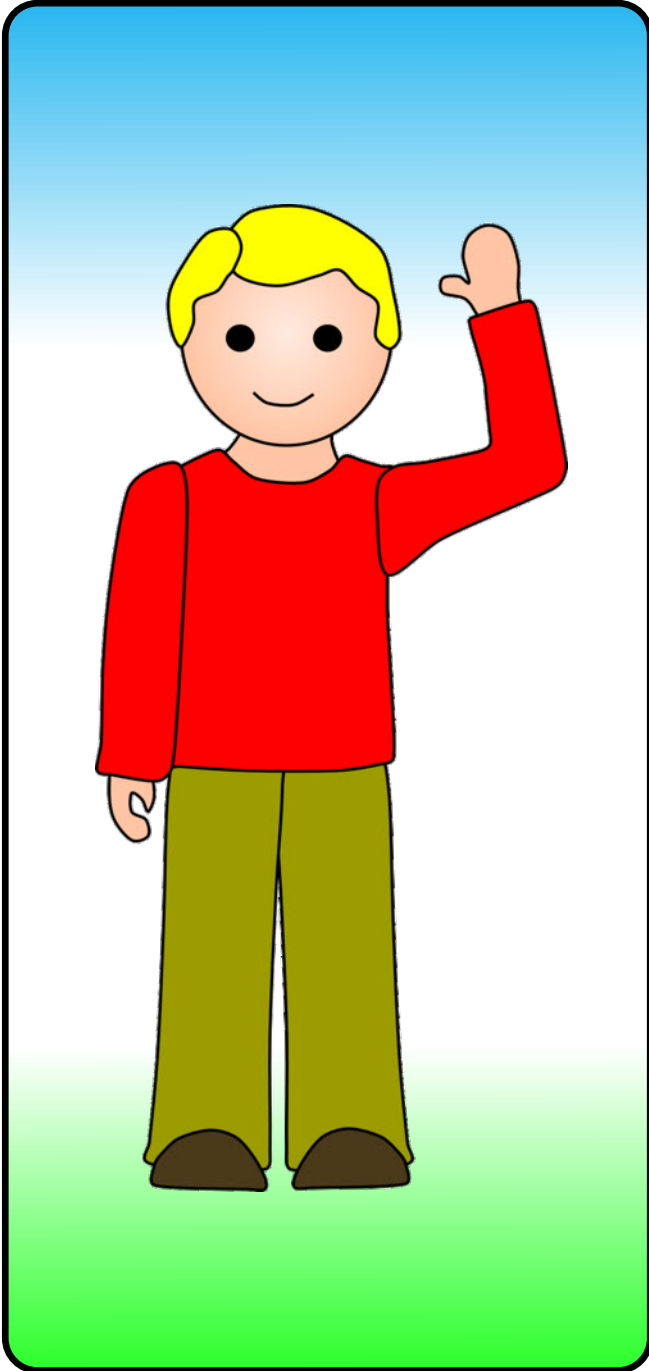


Your name: \_\_\_\_\_



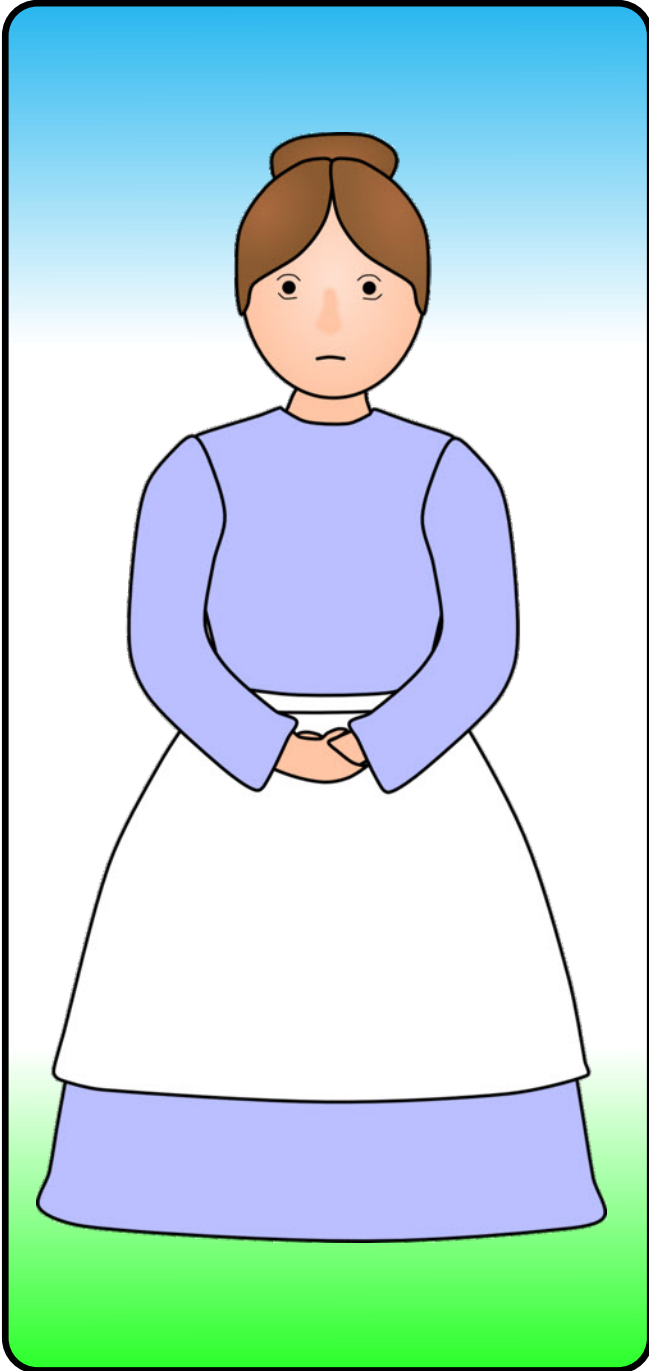
# Jack

Circle the words that describe this character:

happy   friendly   clever  
caring   angry   beautiful  
rude   handsome   evil  
helpful   smart   moody  
honest   ugly   kind  
wicked   nasty   scary  
cross   shy   mean   pretty  
horrible   sly   polite  
grumpy   calm   furious  
unkind   fierce   bold

Write some sentences about the character:

Your name: \_\_\_\_\_



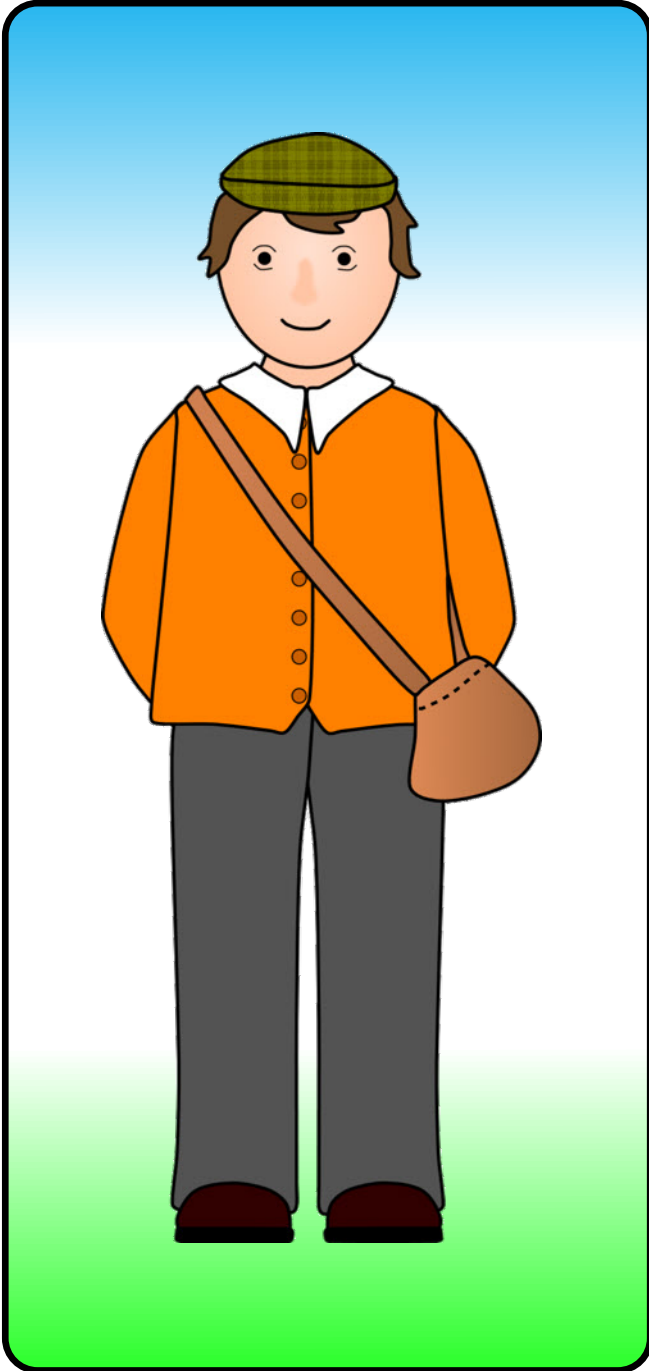
## Jack's mother

Circle the words that describe this character:

happy   friendly   clever  
caring   angry   beautiful  
rude   handsome   evil  
helpful   smart   moody  
honest   ugly   kind  
wicked   nasty   scary  
cross   shy   mean   pretty  
horrible   sly   polite  
grumpy   calm   furious  
unkind   fierce   bold

Write some sentences about the character:

Your name: \_\_\_\_\_



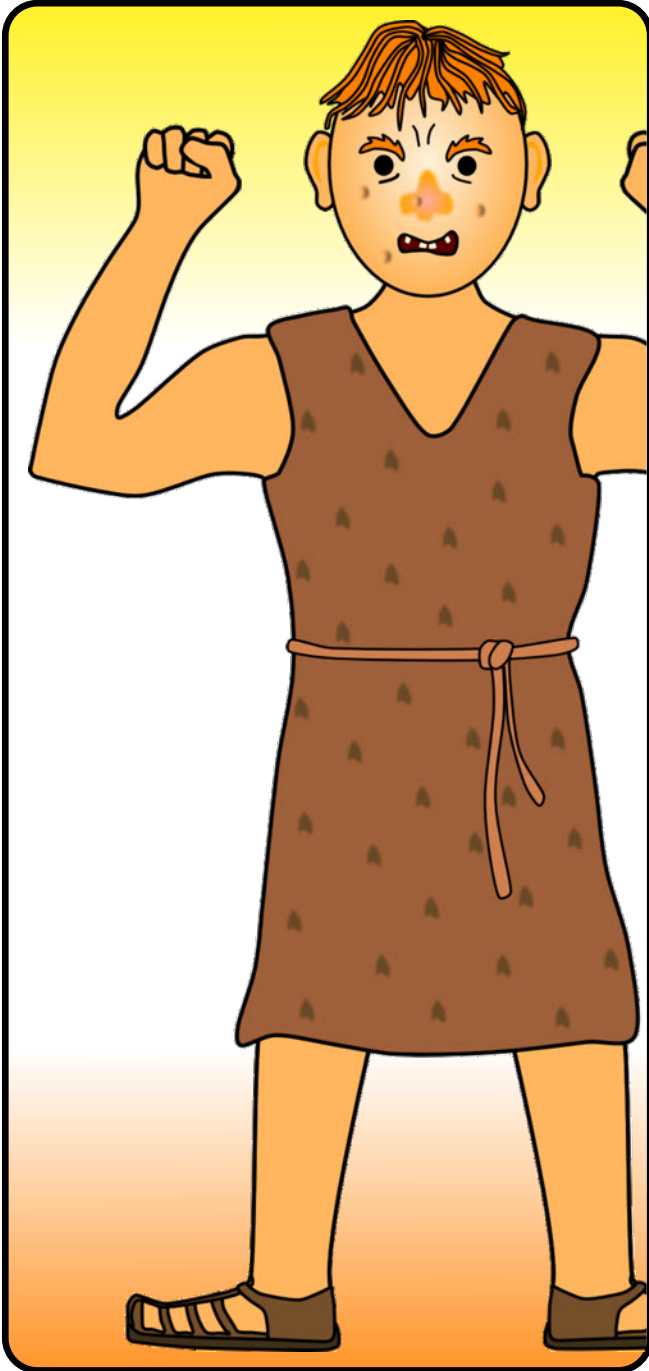
# Bean seller

Circle the words that describe this character:

happy   friendly   clever  
caring   angry   beautiful  
rude   handsome   evil  
helpful   smart   moody  
honest   ugly   kind  
wicked   nasty   scary  
cross   shy   mean   pretty  
horrible   sly   polite  
grumpy   calm   furious  
unkind   fierce   bold

Write some sentences about the character:

Your name: \_\_\_\_\_



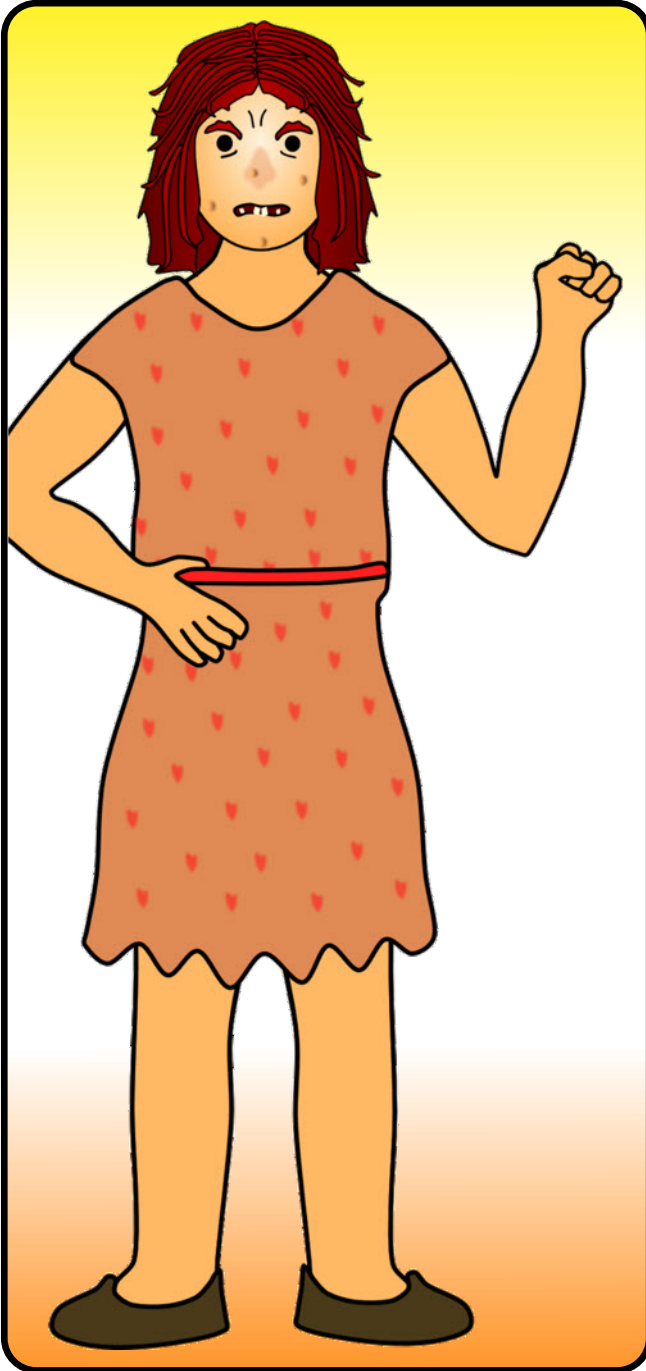
# Giant

Circle the words that describe this character:

happy   friendly   clever  
caring   angry   beautiful  
rude   handsome   evil  
helpful   smart   moody  
honest   ugly   kind  
wicked   nasty   scary  
cross   shy   mean   pretty  
horrible   sly   polite  
grumpy   calm   furious  
unkind   fierce   bold

Write some sentences about the character:

Your name: \_\_\_\_\_



# Giant's wife

Circle the words that describe this character:

happy   friendly   clever  
caring   angry   beautiful  
rude   handsome   evil  
helpful   smart   moody  
honest   ugly   kind  
wicked   nasty   scary  
cross   shy   mean   pretty  
horrible   sly   polite  
grumpy   calm   furious  
unkind   fierce   bold

Write some sentences about the character: