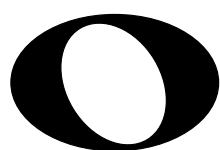
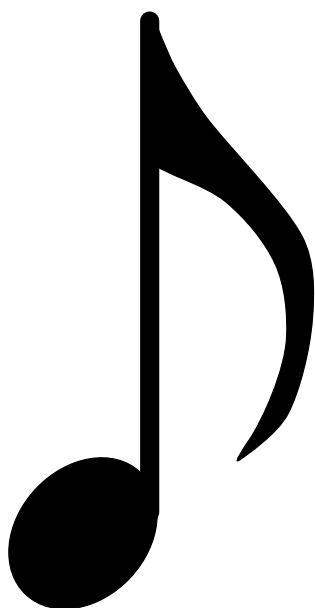


Musical notation cards



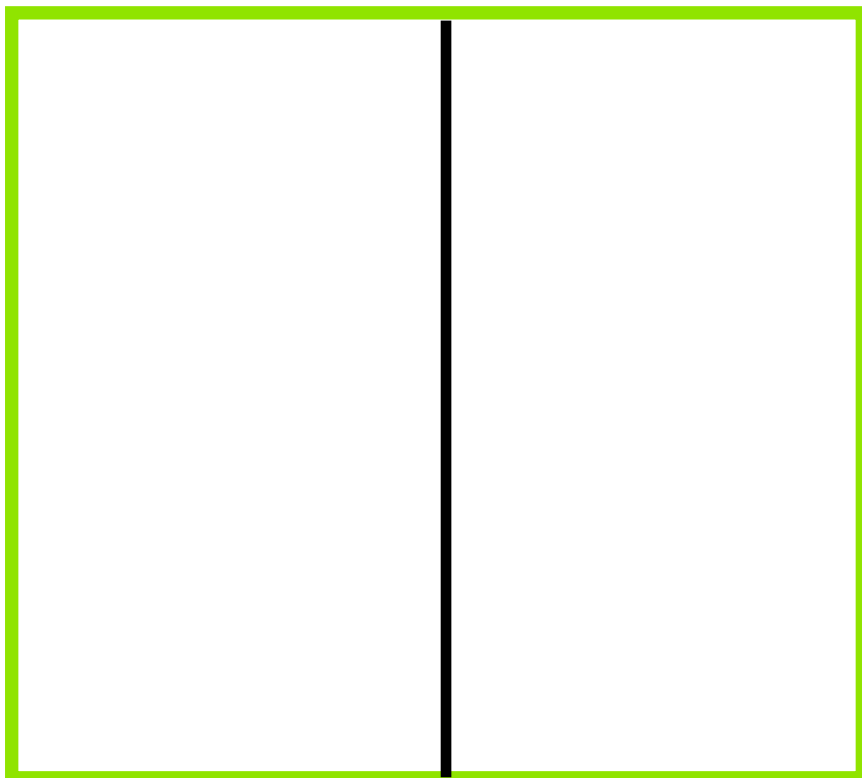
Musical notation cards



Musical notation cards



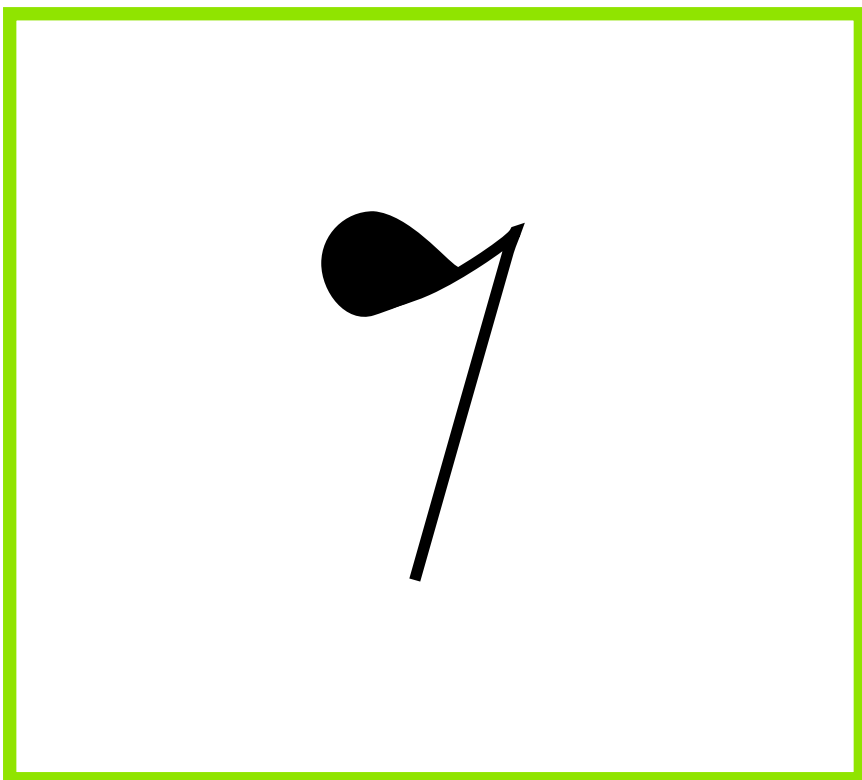
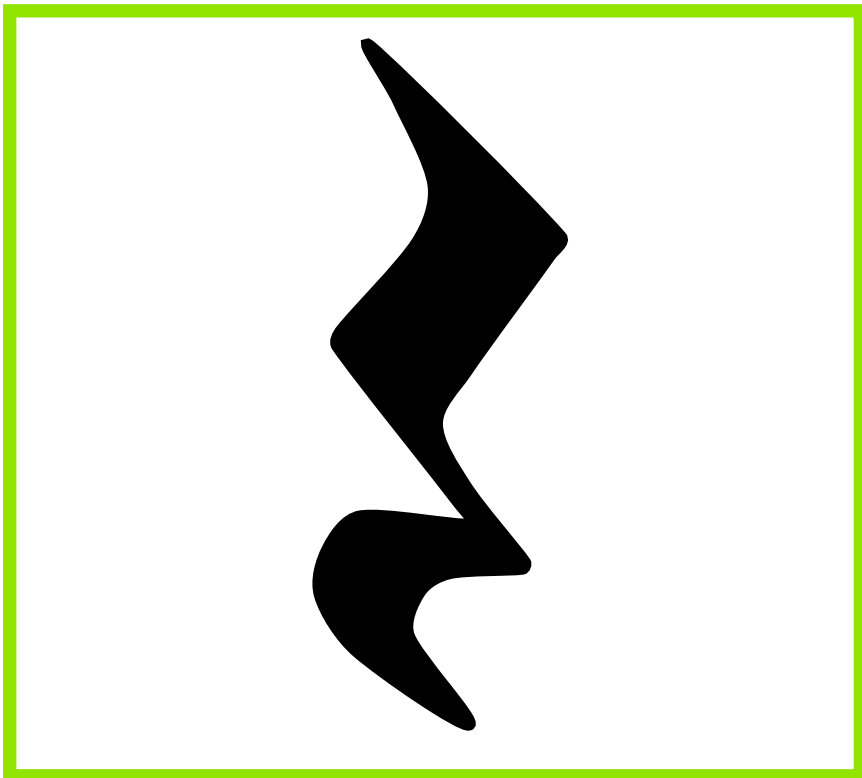
Musical notation cards



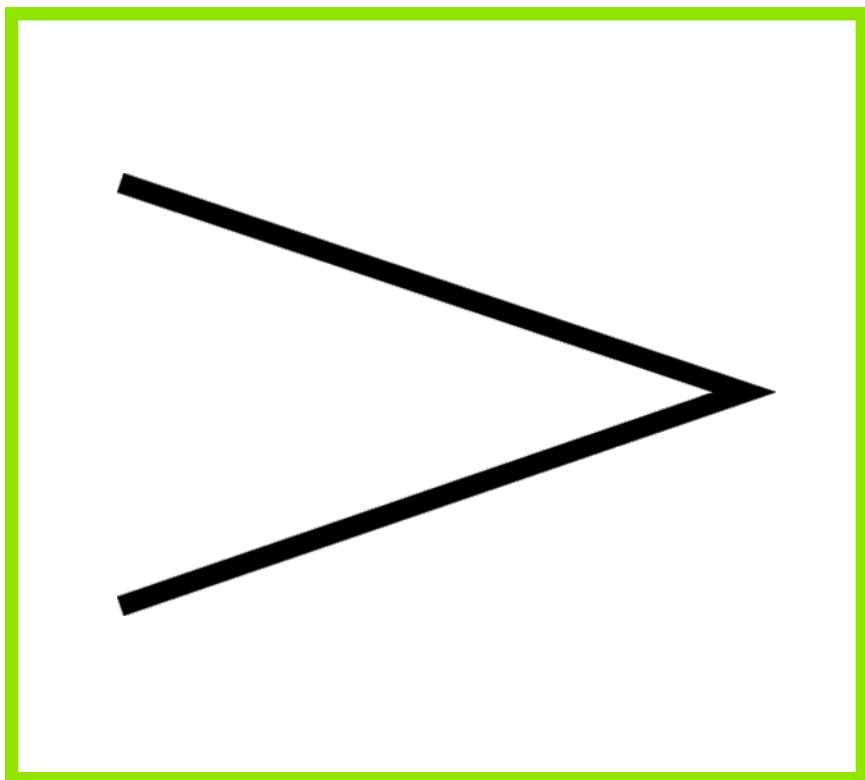
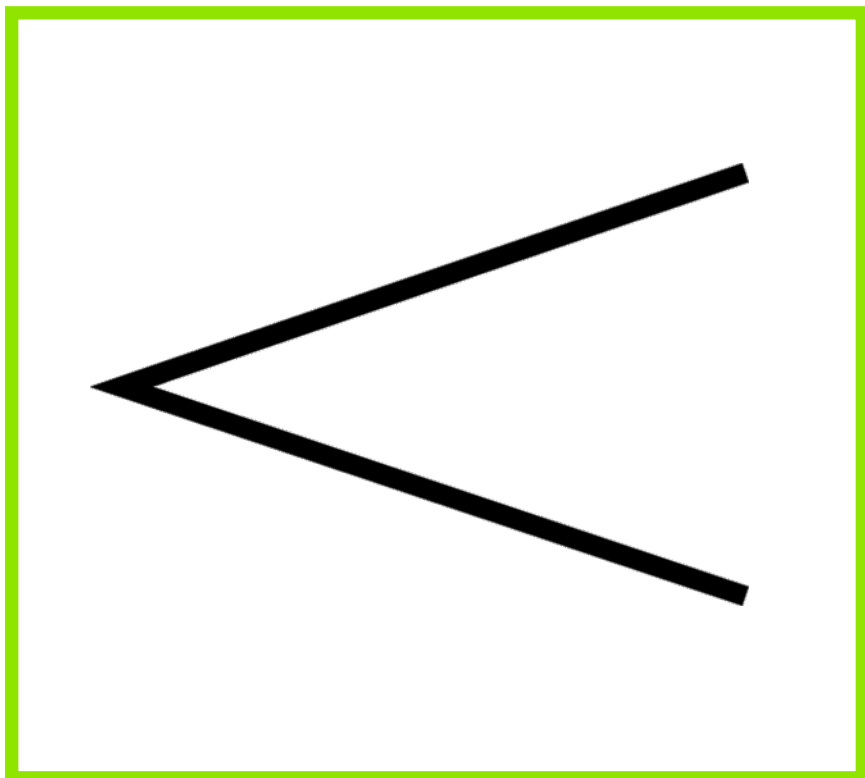
(bar line)



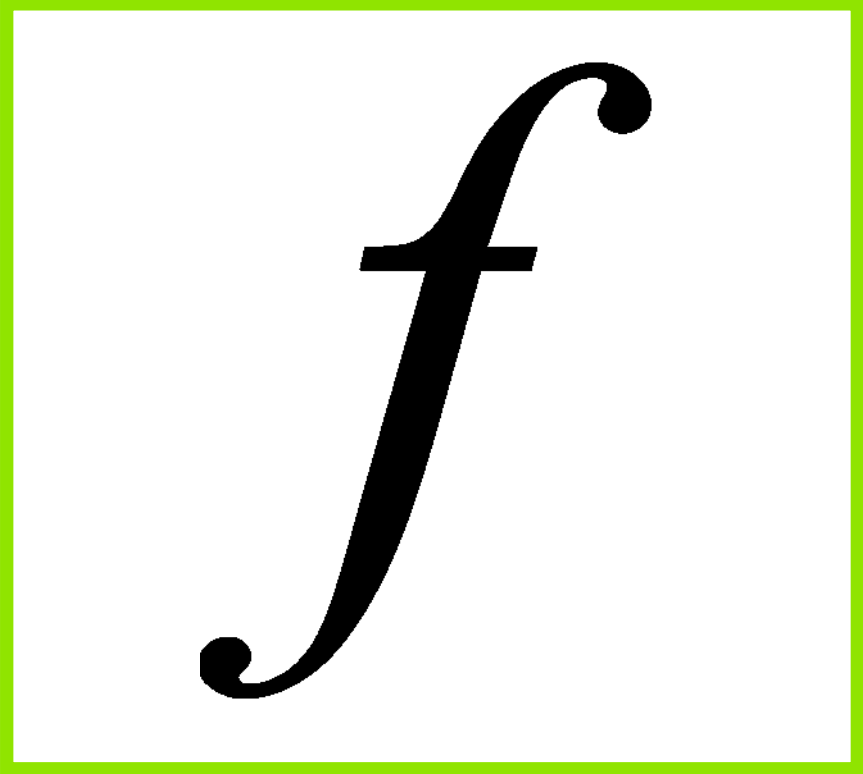
Musical notation cards



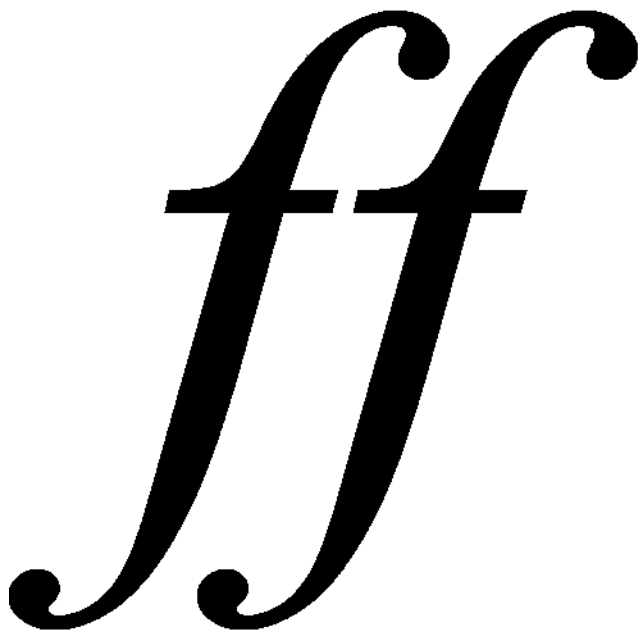
Musical notation cards



Musical notation cards



f

A single, large, black, italicized lowercase letter 'f' is centered within a square frame with a bright green border. The 'f' has a characteristic flourish at the top and a tail that curves to the left at the bottom.

ff

Two large, black, italicized lowercase letters 'ff' are centered within a square frame with a bright green border. The letters are closely spaced and share a common horizontal baseline. Each 'f' has a flourish at the top and a tail that curves to the left at the bottom.

Musical notation cards

p

pp