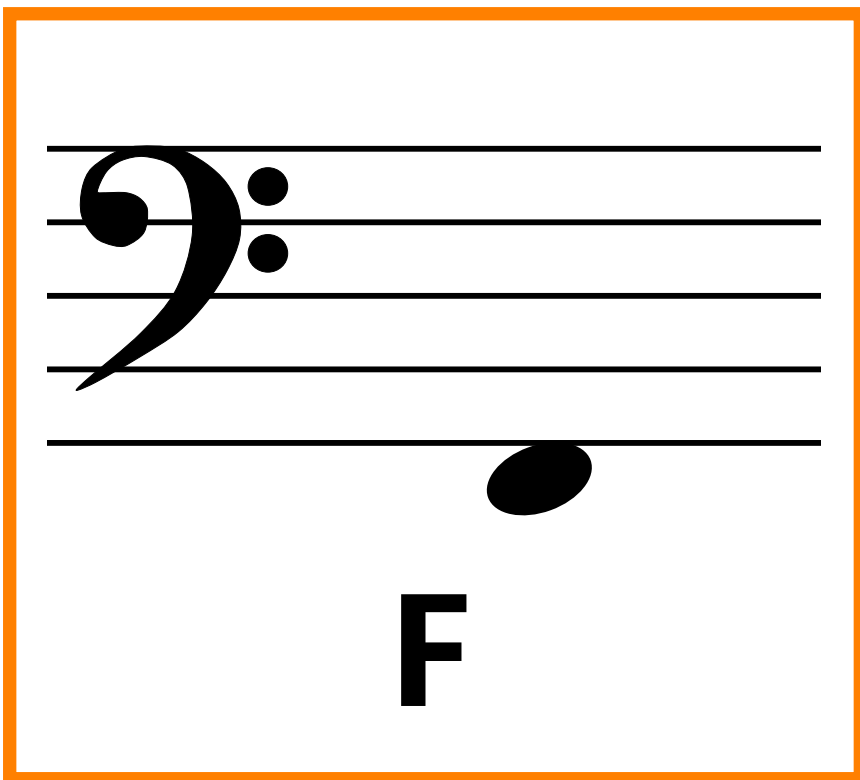
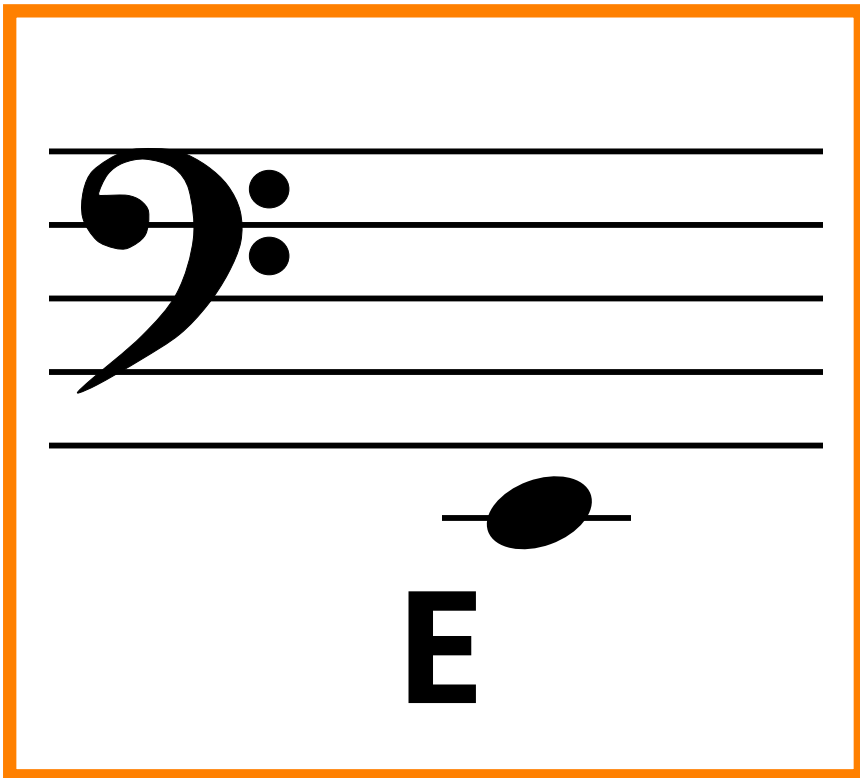
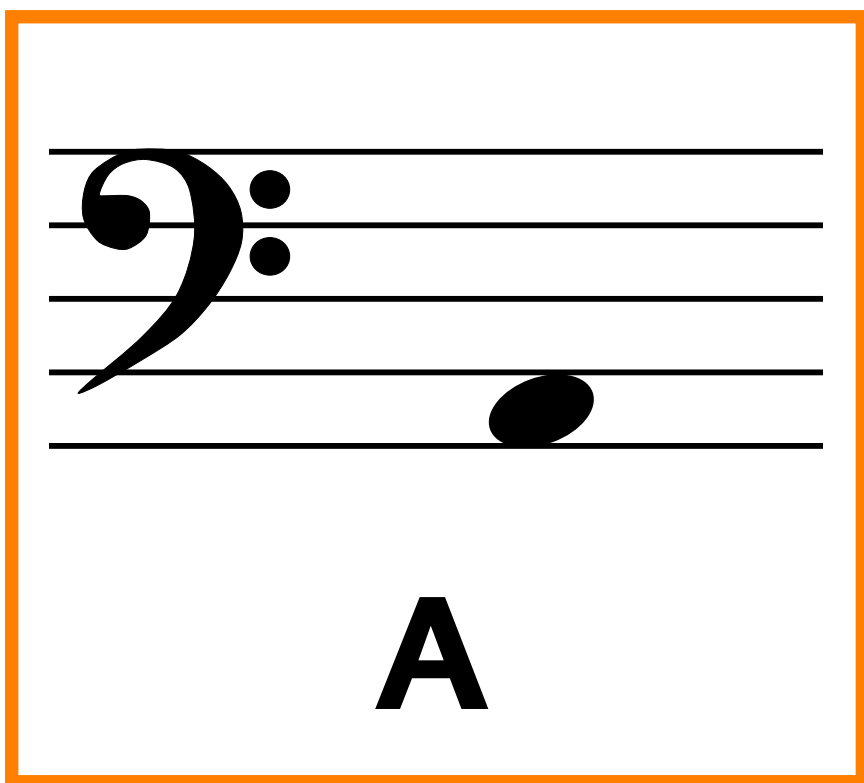
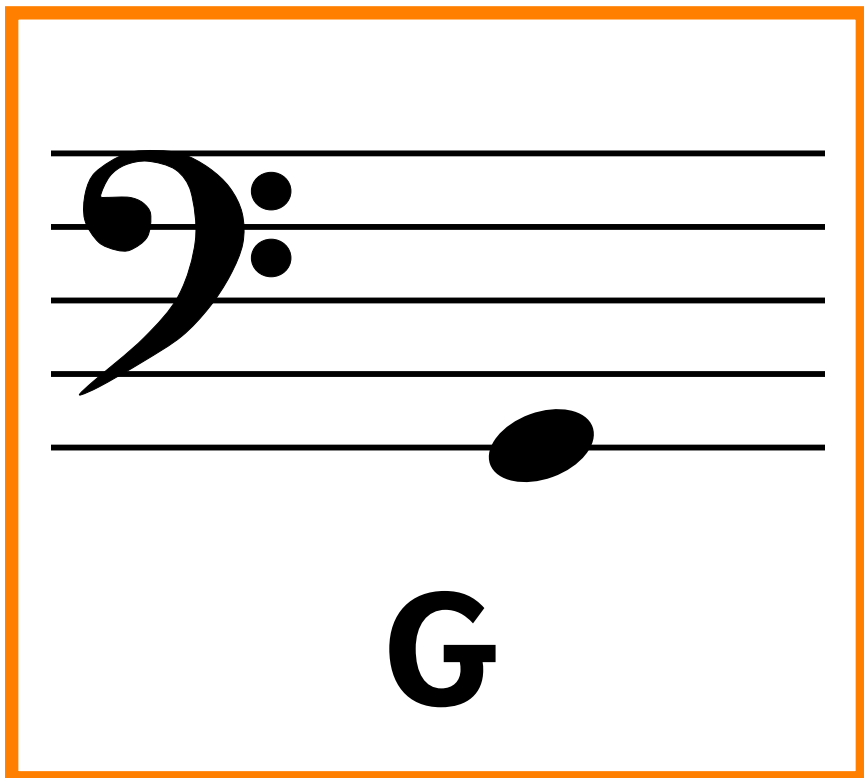


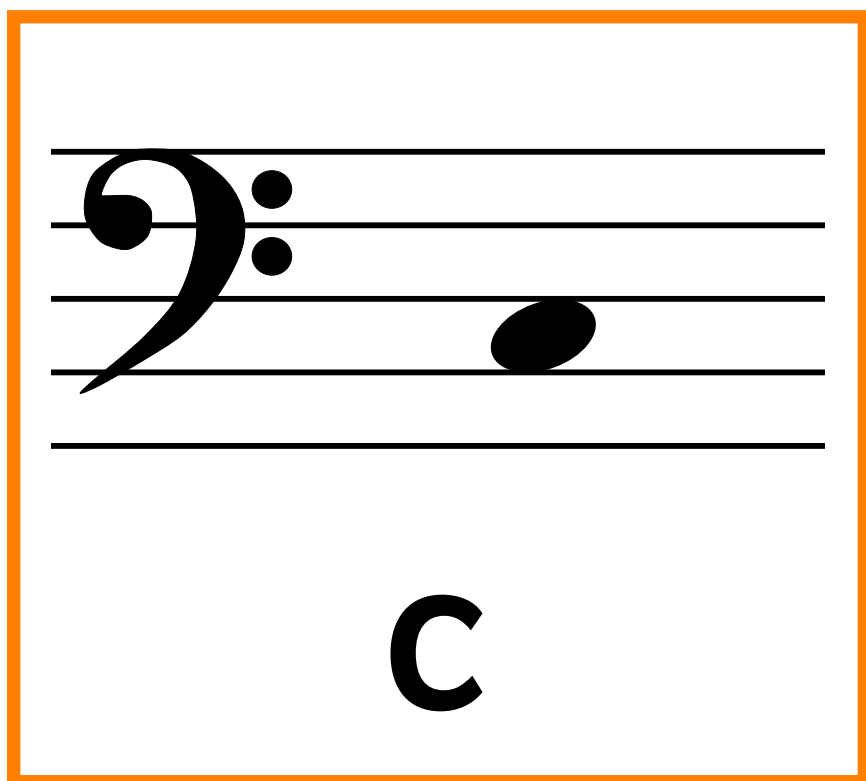
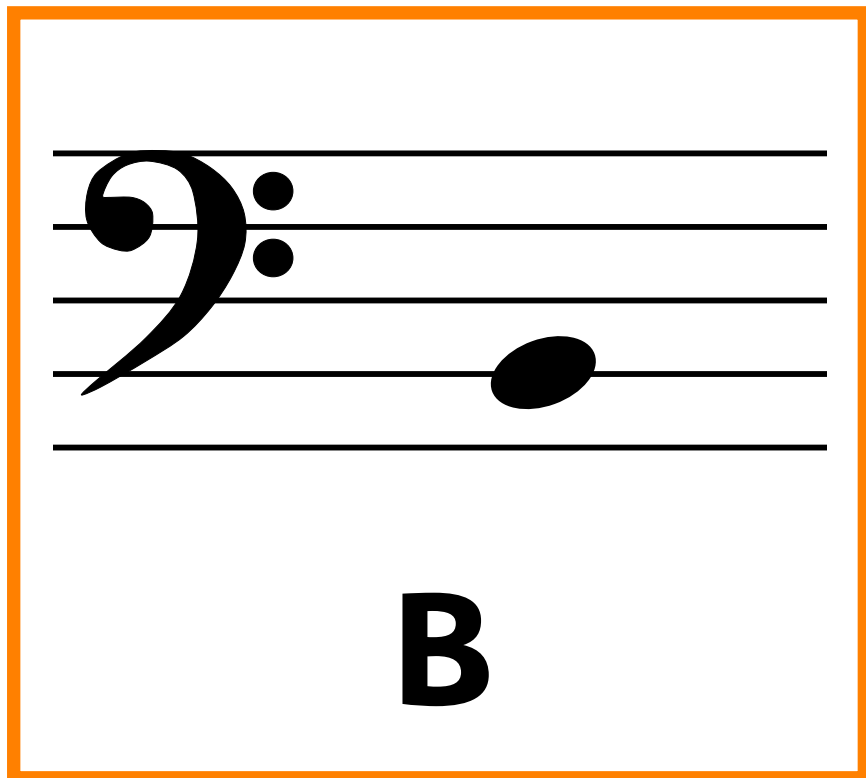
# *Bass clef musical note cards*



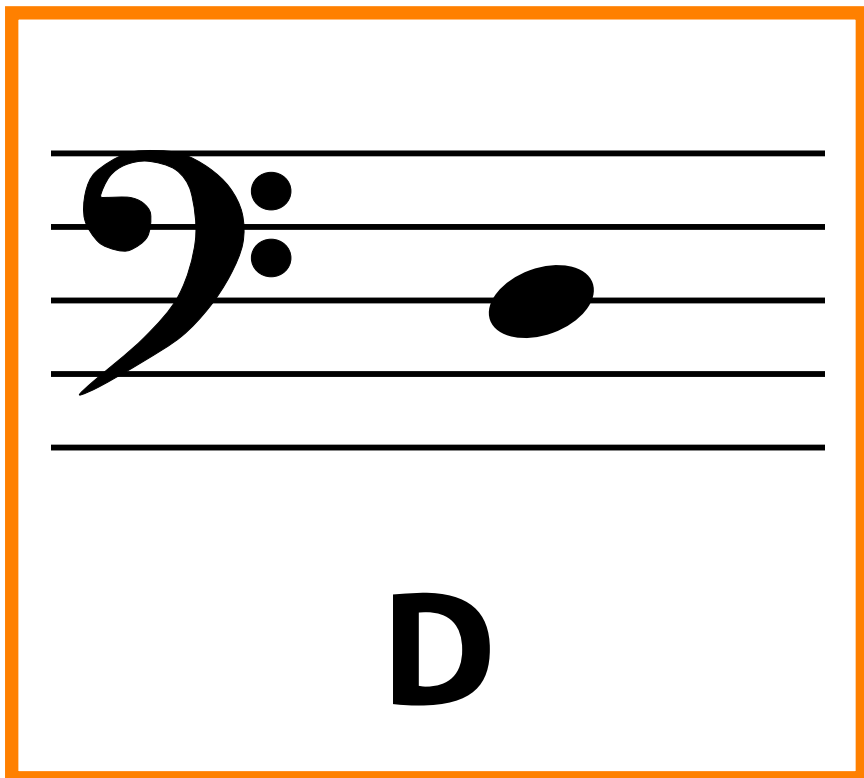
# *Bass clef musical note cards*



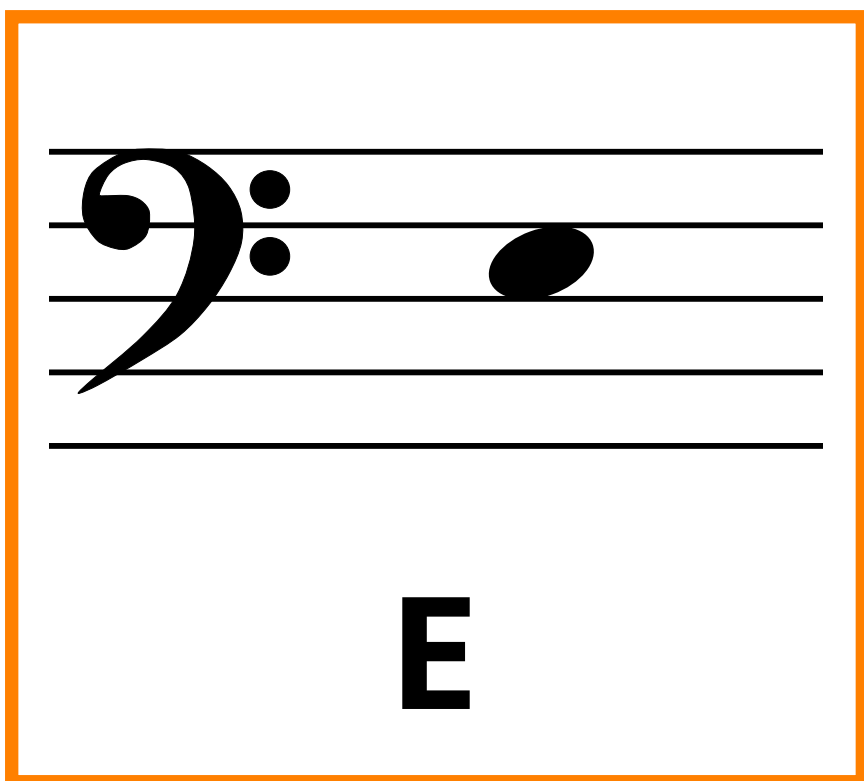
# *Bass clef musical note cards*



# *Bass clef musical note cards*

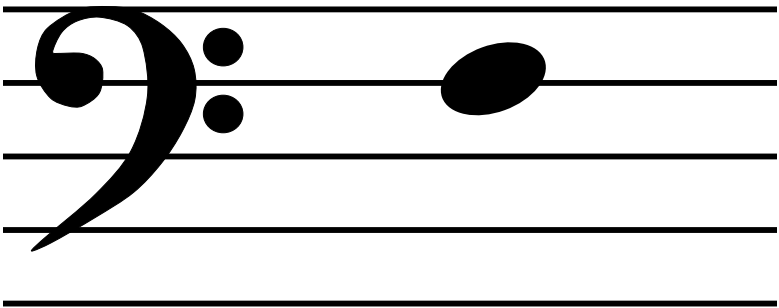


A musical staff with a bass clef and a single note on the second line from the bottom. The note is a solid black oval with a stem pointing down. Below the staff is the letter **D**.



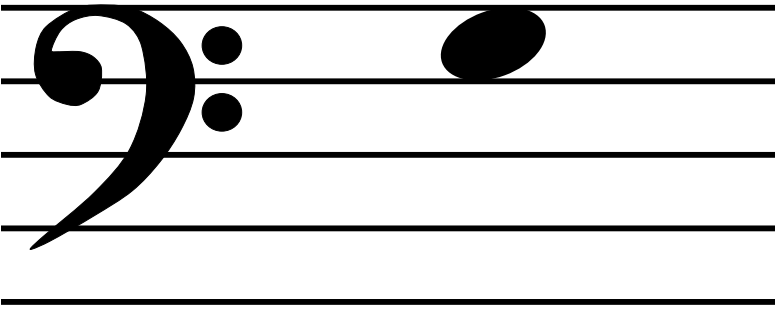
A musical staff with a bass clef and a single note on the first space from the bottom. The note is a solid black oval with a stem pointing down. Below the staff is the letter **E**.

# *Bass clef musical note cards*



A musical staff with a bass clef and a single note on the second line from the bottom.

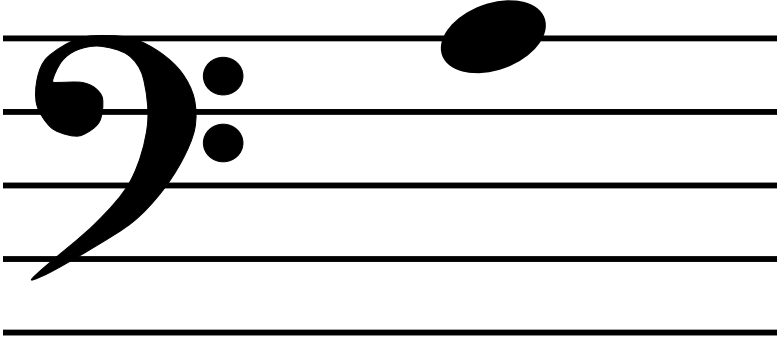
**F**



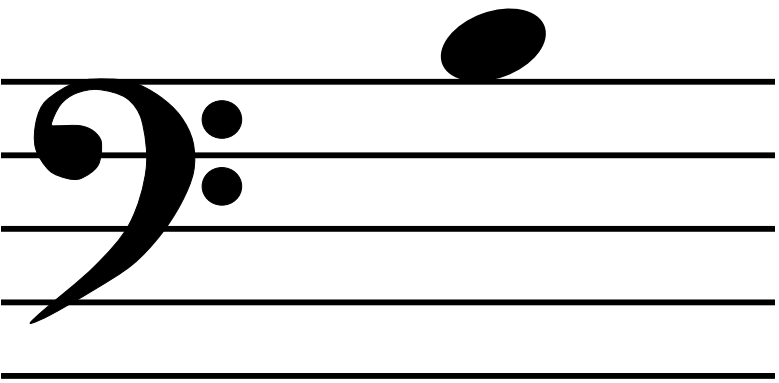
A musical staff with a bass clef and a single note on the third line from the bottom.

**G**

# *Bass clef musical note cards*

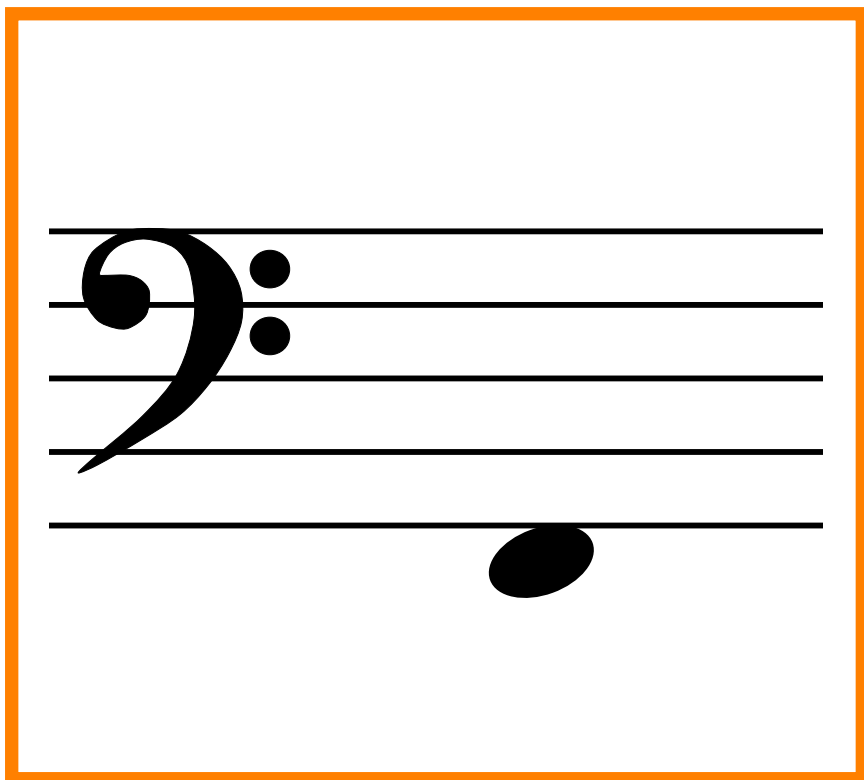
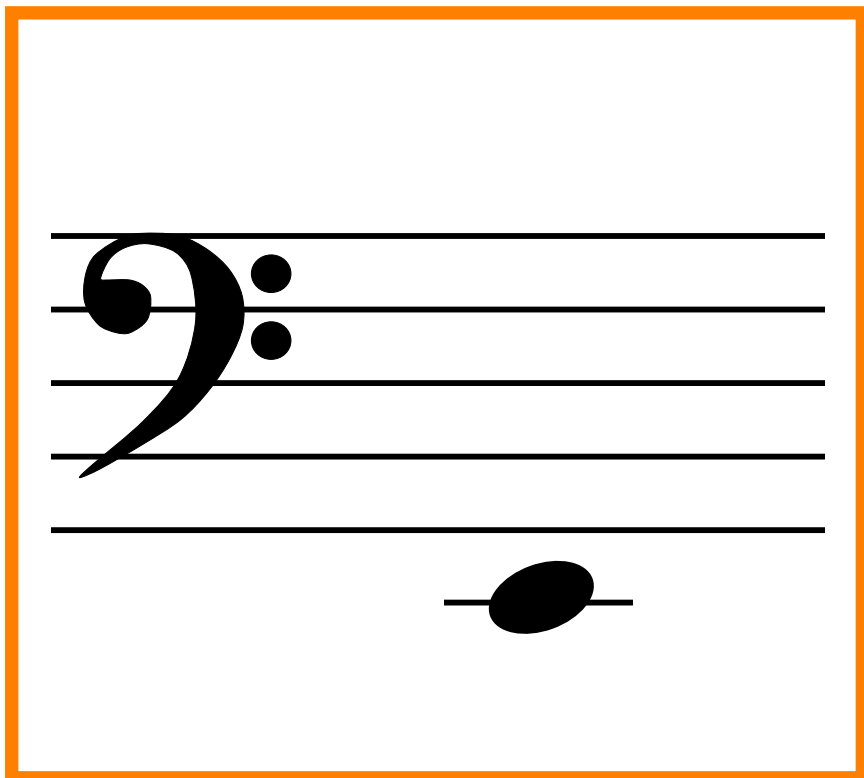


A musical staff with a bass clef. A single black oval note is placed on the second line from the bottom. Below the staff is a large, bold, black letter 'A'.

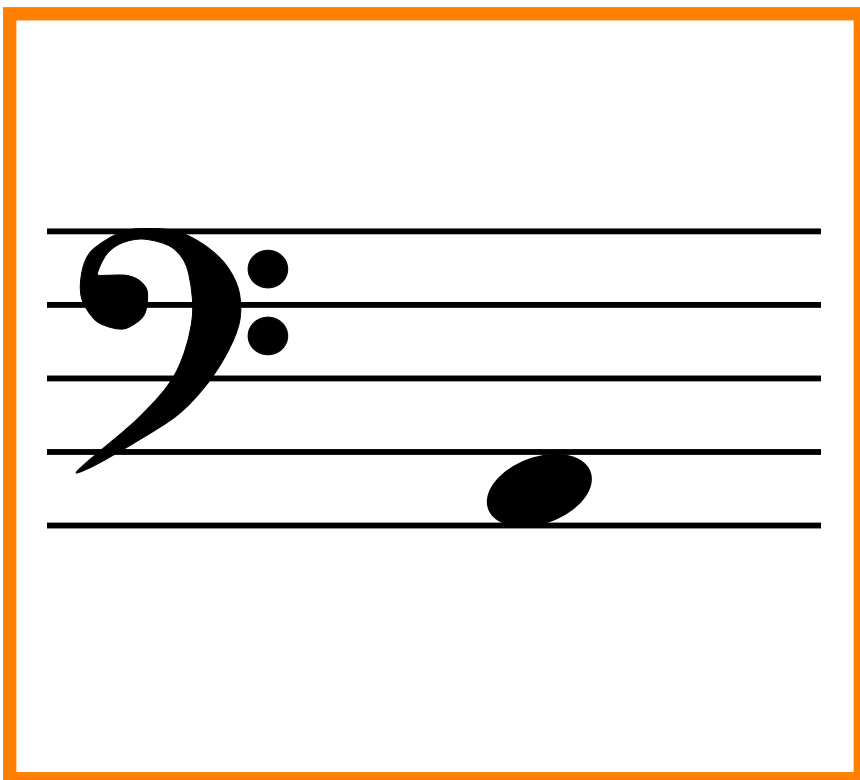
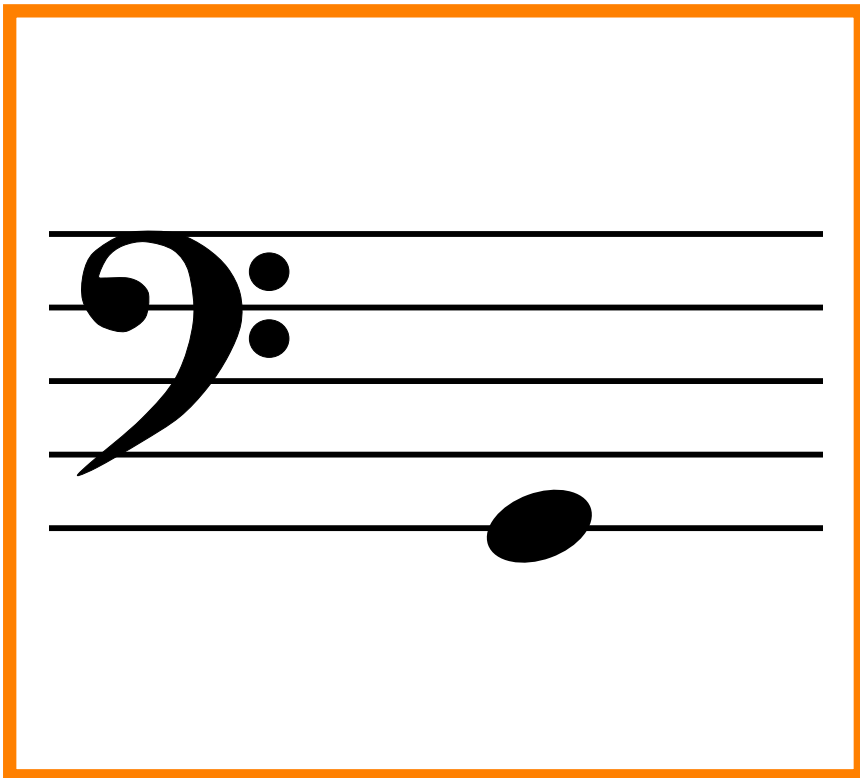


A musical staff with a bass clef. A single black oval note is placed on the third line from the bottom. Below the staff is a large, bold, black letter 'B'.

# *Bass clef musical note cards*

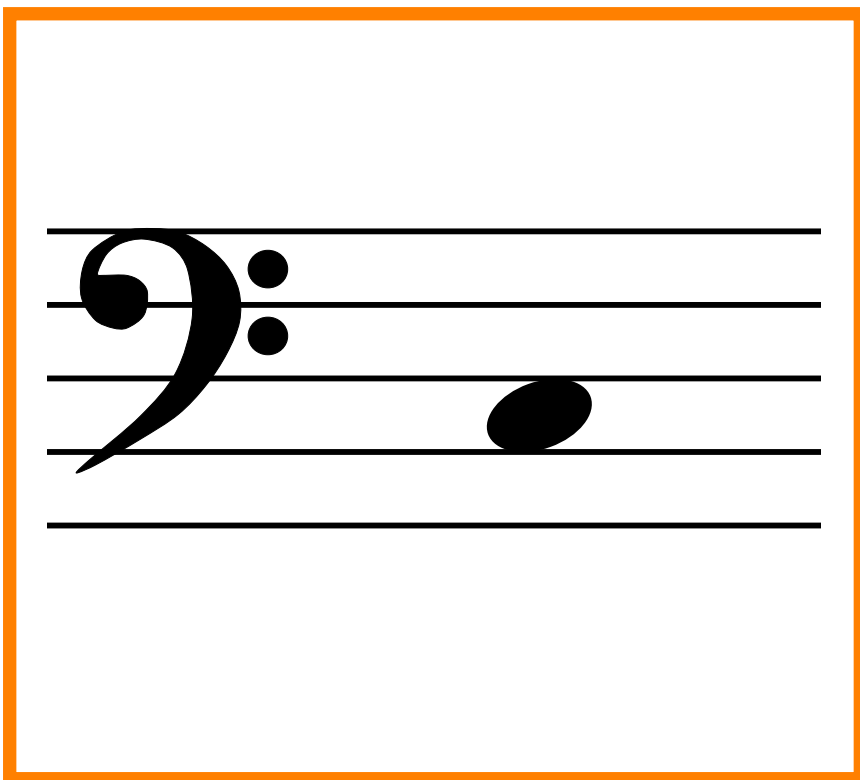
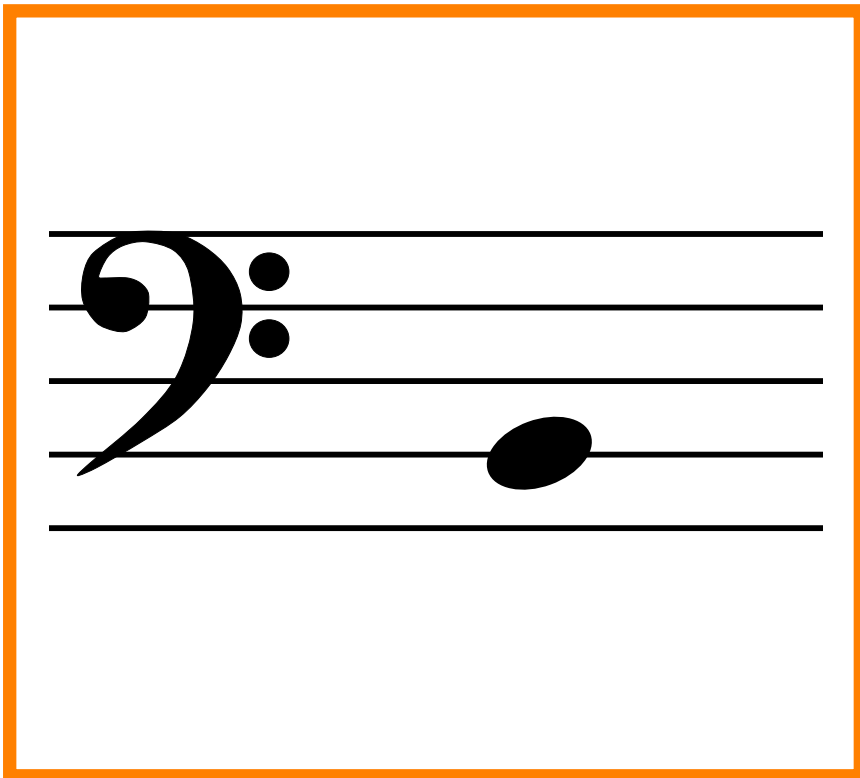


# *Bass clef musical note cards*

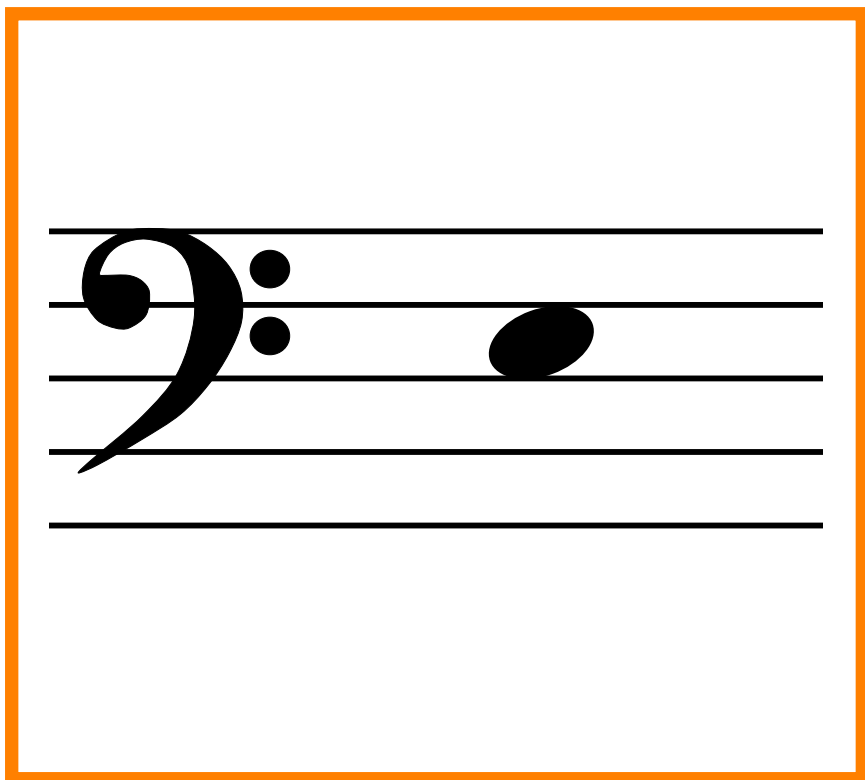
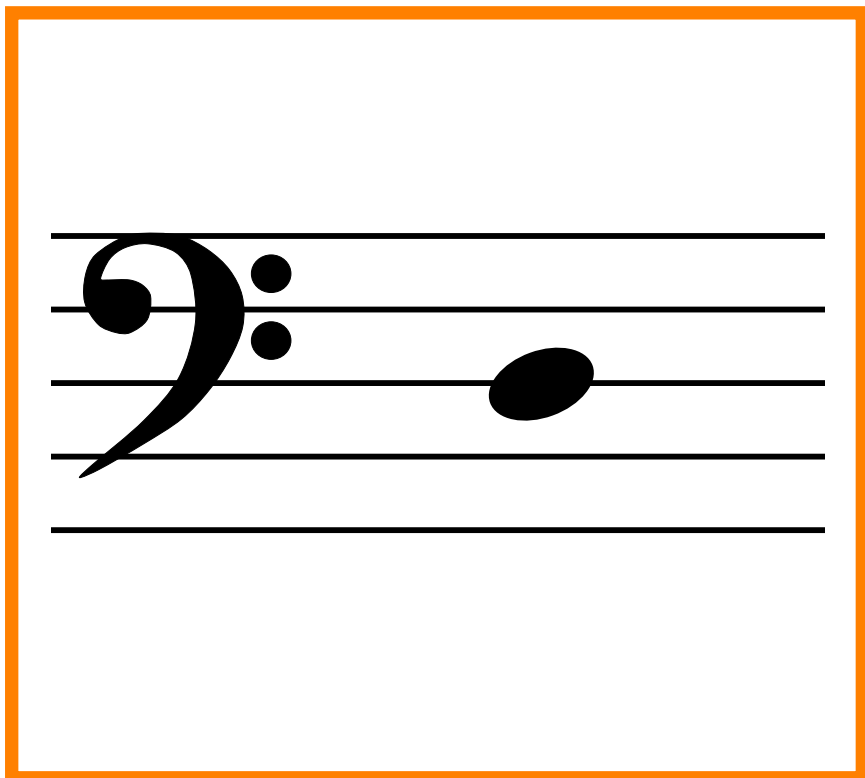




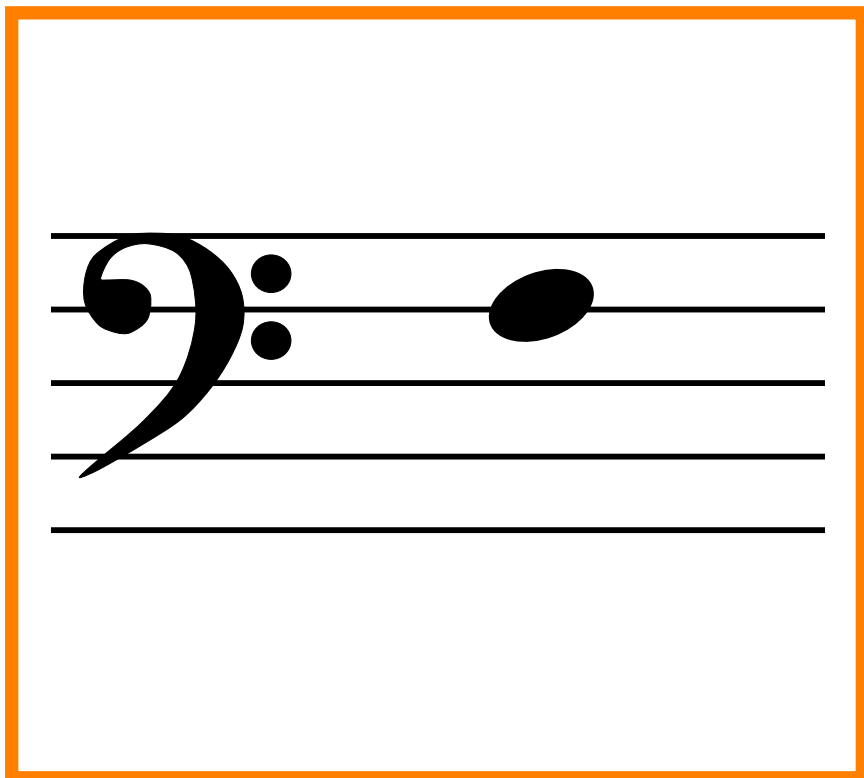
# *Bass clef musical note cards*



# *Bass clef musical note cards*



# *Bass clef musical note cards*



# *Bass clef musical note cards*

