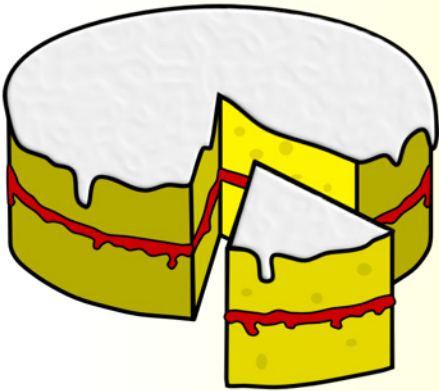


*Cardiau geiriau wow*



blasus



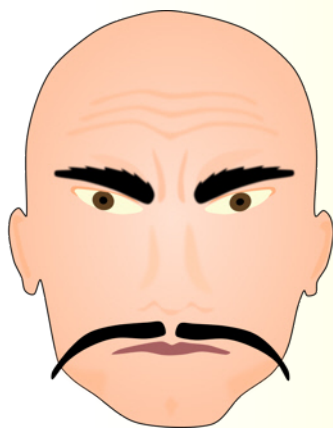
poeth

s☆g☆l☆e☆i☆n☆i☆o☆i☆o☆g☆☆☆☆☆☆☆☆☆☆

*Cardiau geiriau wow*



lliwgal



sarrug

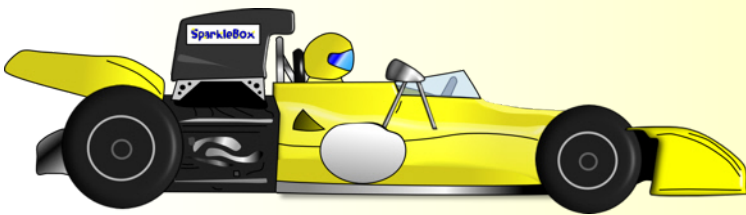


llon

**Cardiau geiriau wow**

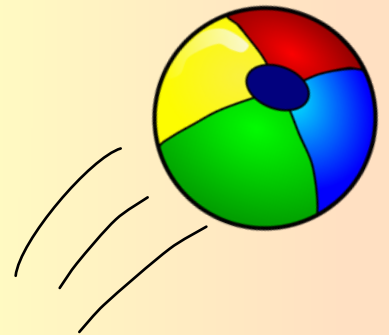


dychrynlyd

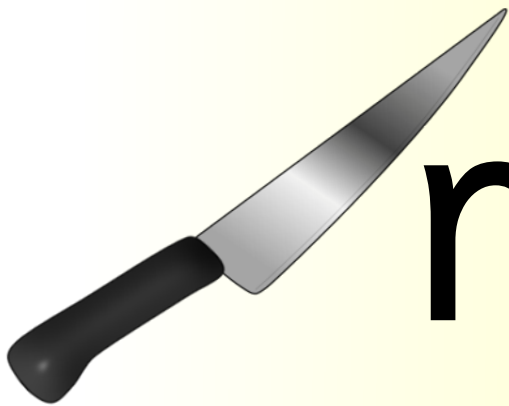


*cyflym*

sbonciog



*Cardiau geiriau wow*



minio g

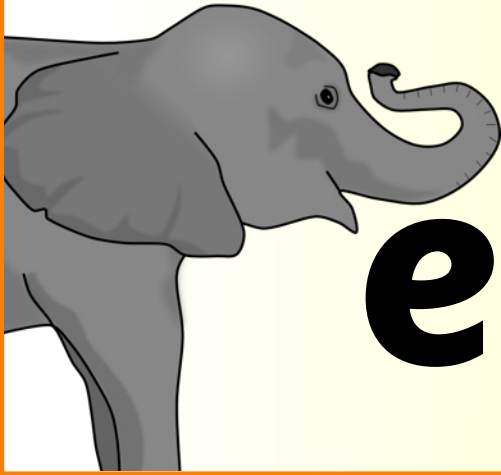


hyll

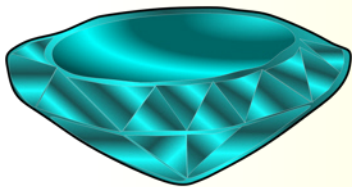


ciw t

*Cardiau geiriau wow*



**enfawr**

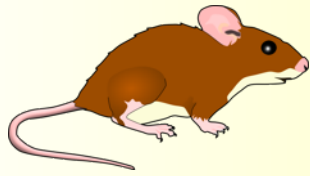


**gwerthfawr**



**hardd**

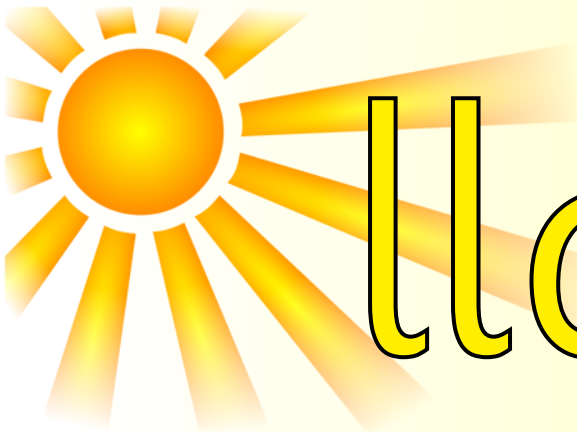
*Cardiau geiriau wow*



bychan



pigog



llachar