

# Science Investigation

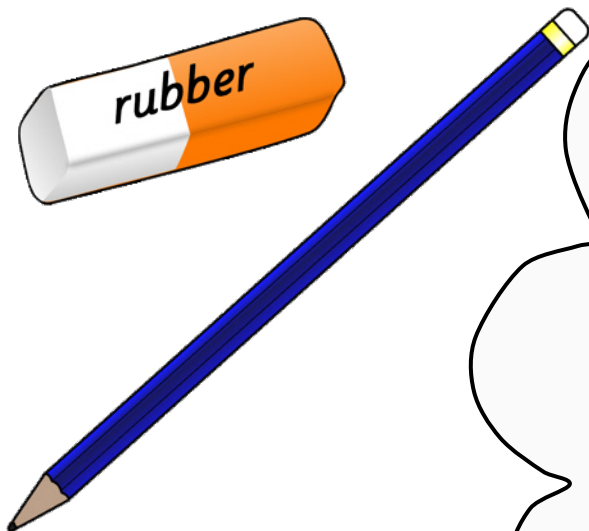


What do you  
want to find out?

**Think of a  
question to ask.**

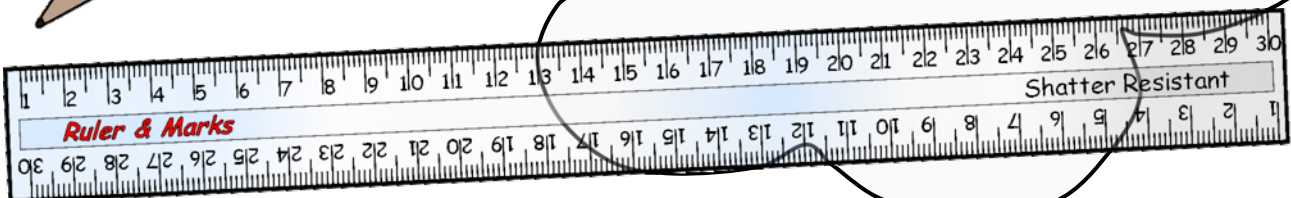
© Copyright 2012, www.sparklebox.co.uk

# Science Investigation



Design a test or  
experiment.  
What you measure?

**Draw a diagram.**



# Science Investigation



What do you think will happen?

**Make a prediction.**

© Copyright 2012, [www.sparklebox.co.uk](http://www.sparklebox.co.uk)

# Science Investigation



What will you ensure **stays the same** during the tests?

**Make sure your test is fair.**

# Science Investigation

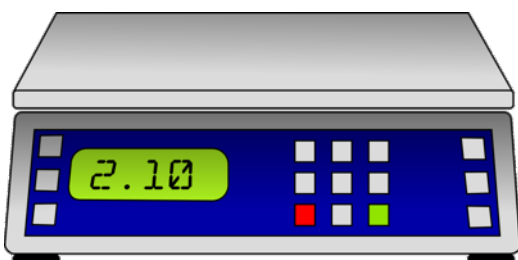
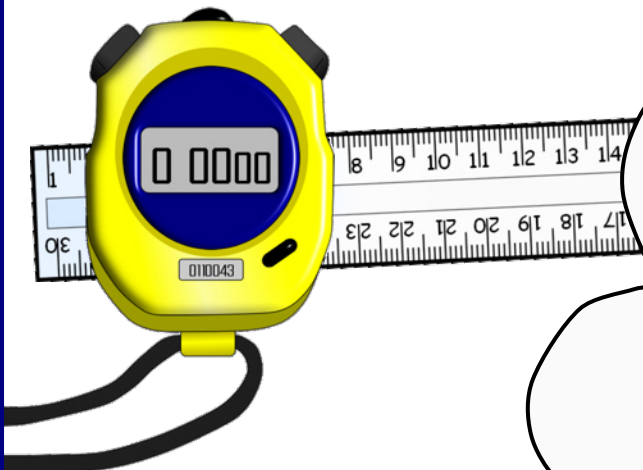


What will you change each time?

**Decide on the one variable to change.**

© Copyright 2012, www.sparklebox.co.uk

# Science Investigation



**Carry out the experiment.**

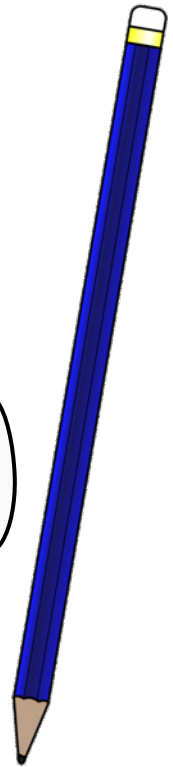
Remember to make sure it is fair!  
Make careful measurements.

# Science Investigation



**Carefully  
write down  
your measurements  
and observations.**

How will you  
record the results?



© Copyright 2012, [www.sparklebox.co.uk](http://www.sparklebox.co.uk)

# Science Investigation



**Explain  
what happened.**

What did you find out?  
Was your  
prediction right?