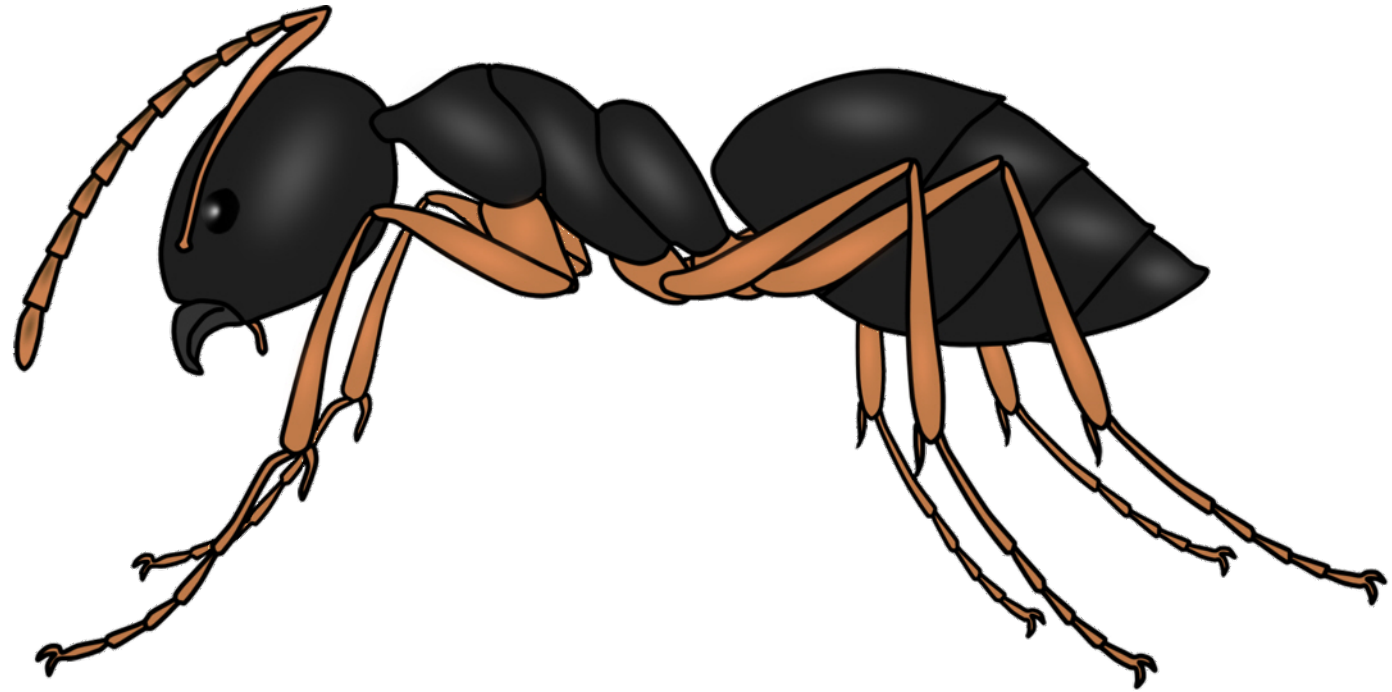


ant



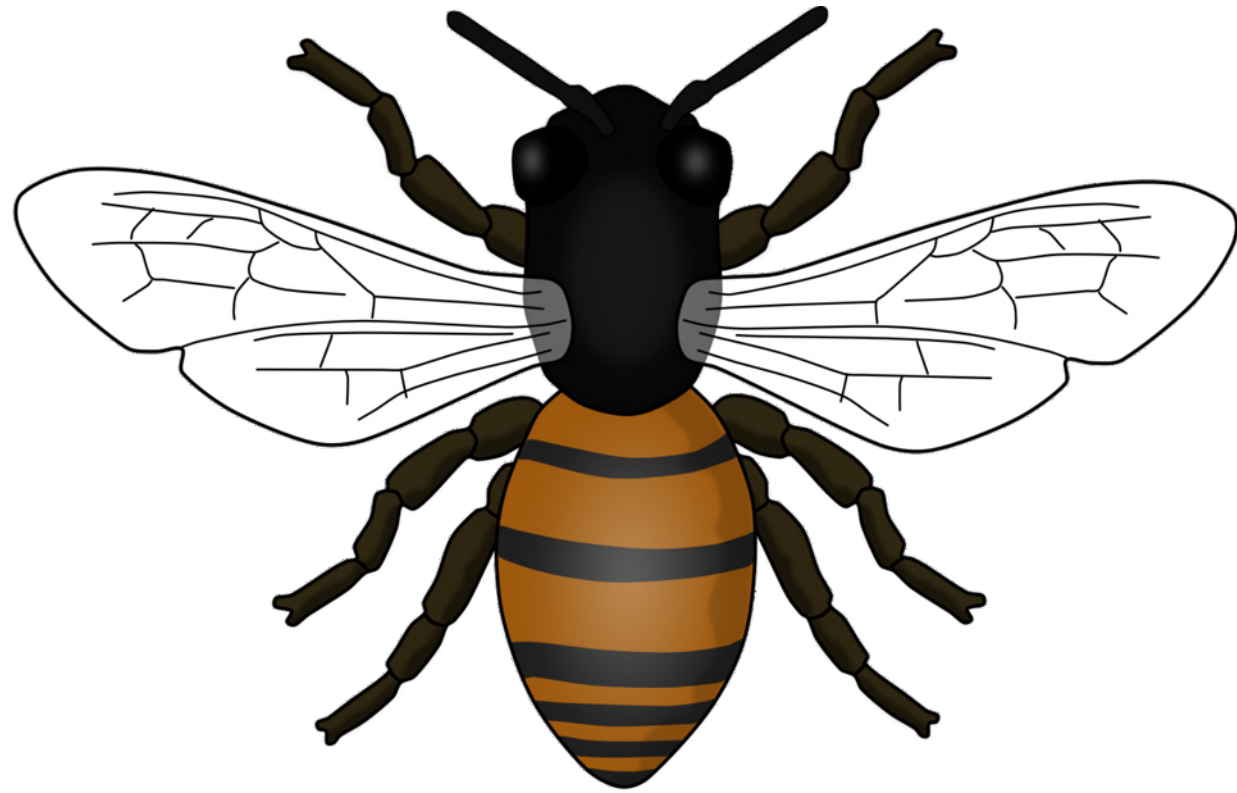
Which of these fits?

alive

was alive

never alive

bee



Which of these fits?

alive

was alive

never alive

football



Which of these fits?

alive

was alive

never alive

rock



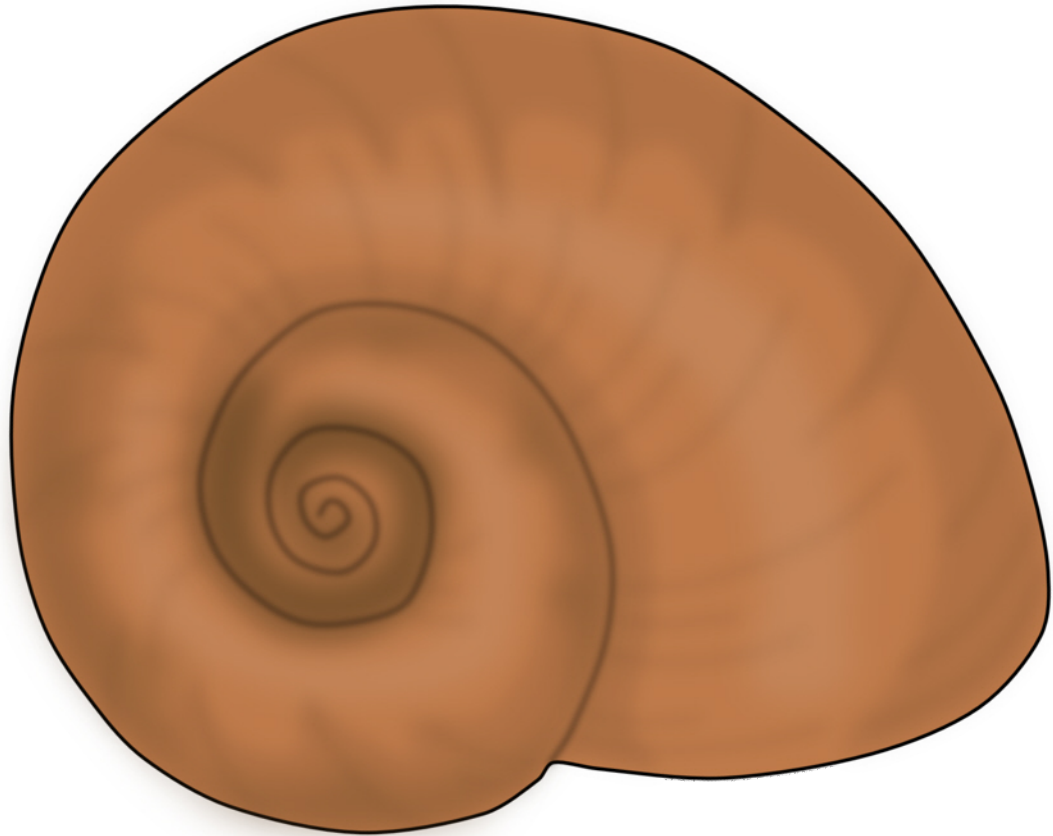
Which of these fits?

alive

was alive

never alive

snail
shell



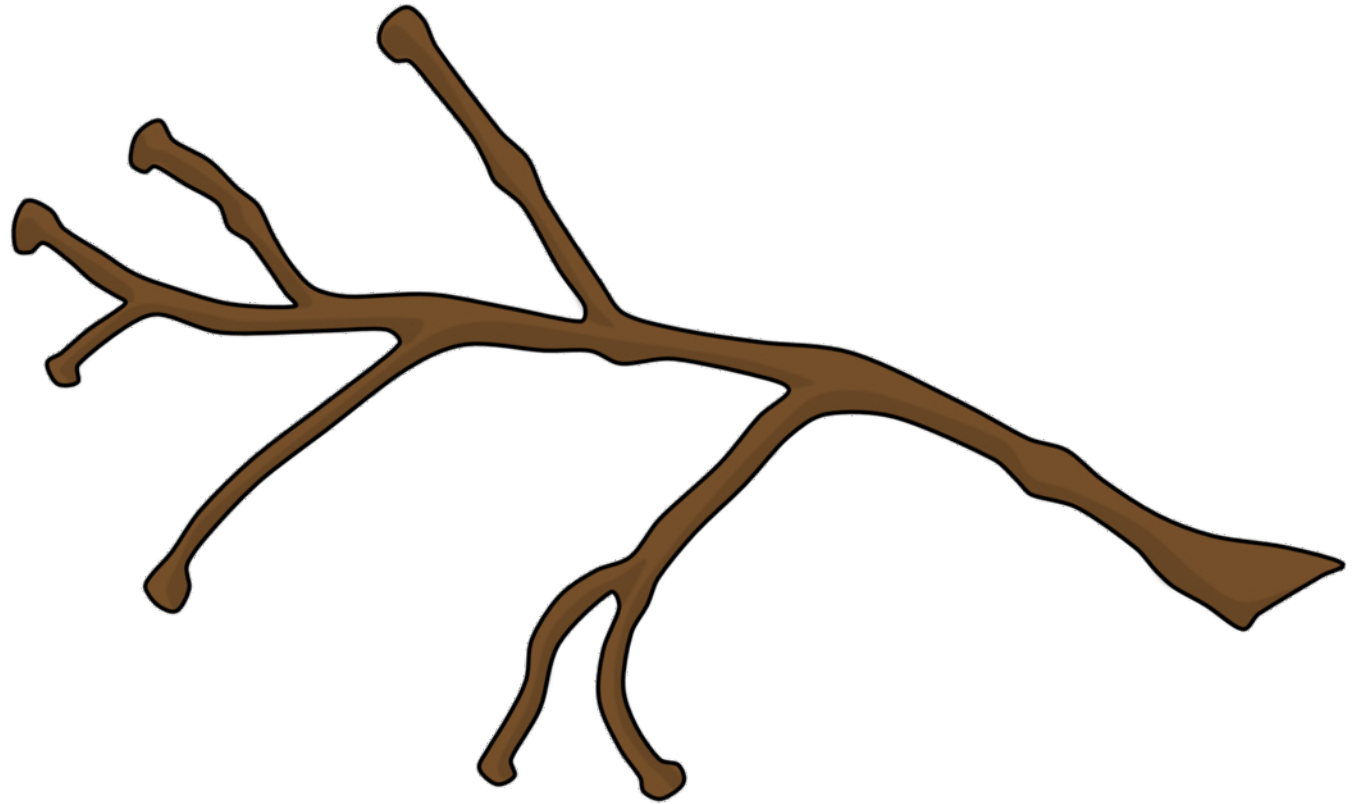
Which of these fits?

alive

was alive

never alive

twig



Which of these fits?

alive

was alive

never alive

bush



Which of these fits?

alive

was alive

never alive

squirrel



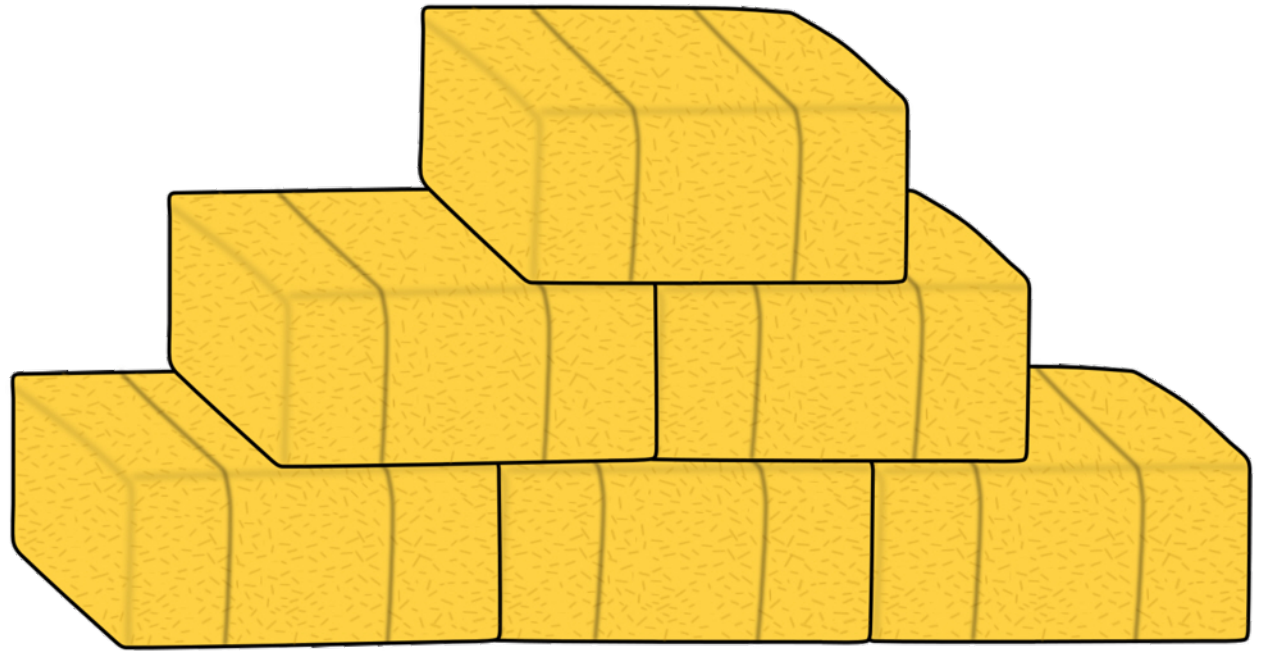
Which of these fits?

alive

was alive

never alive

straw



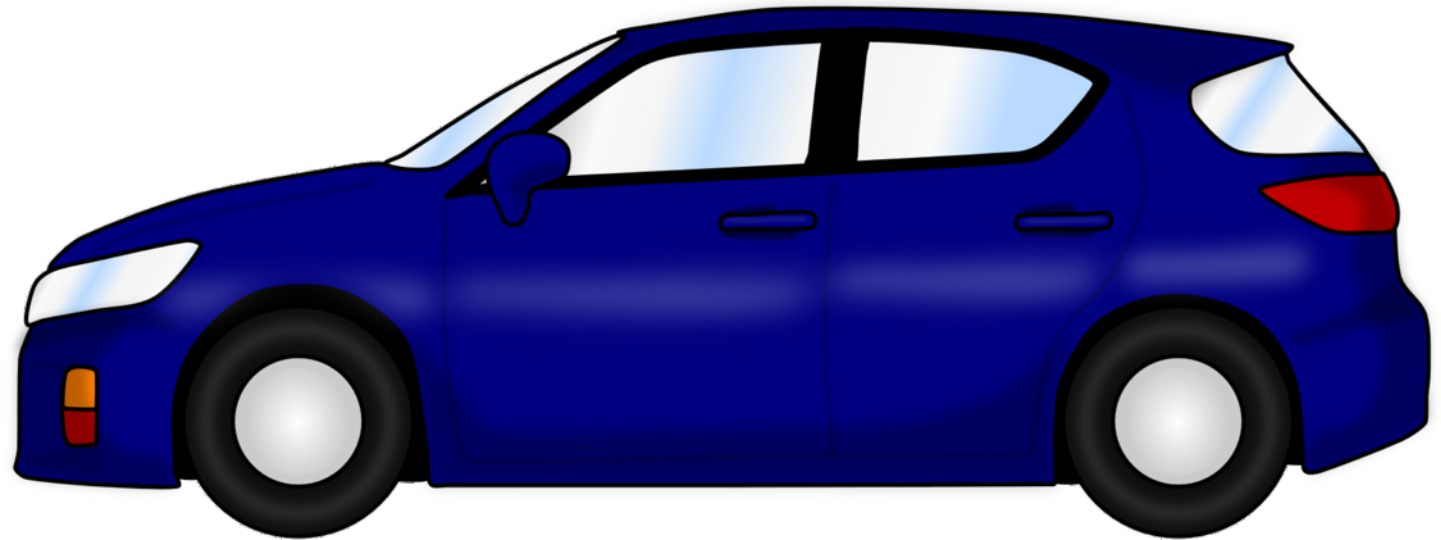
Which of these fits?

alive

was alive

never alive

car



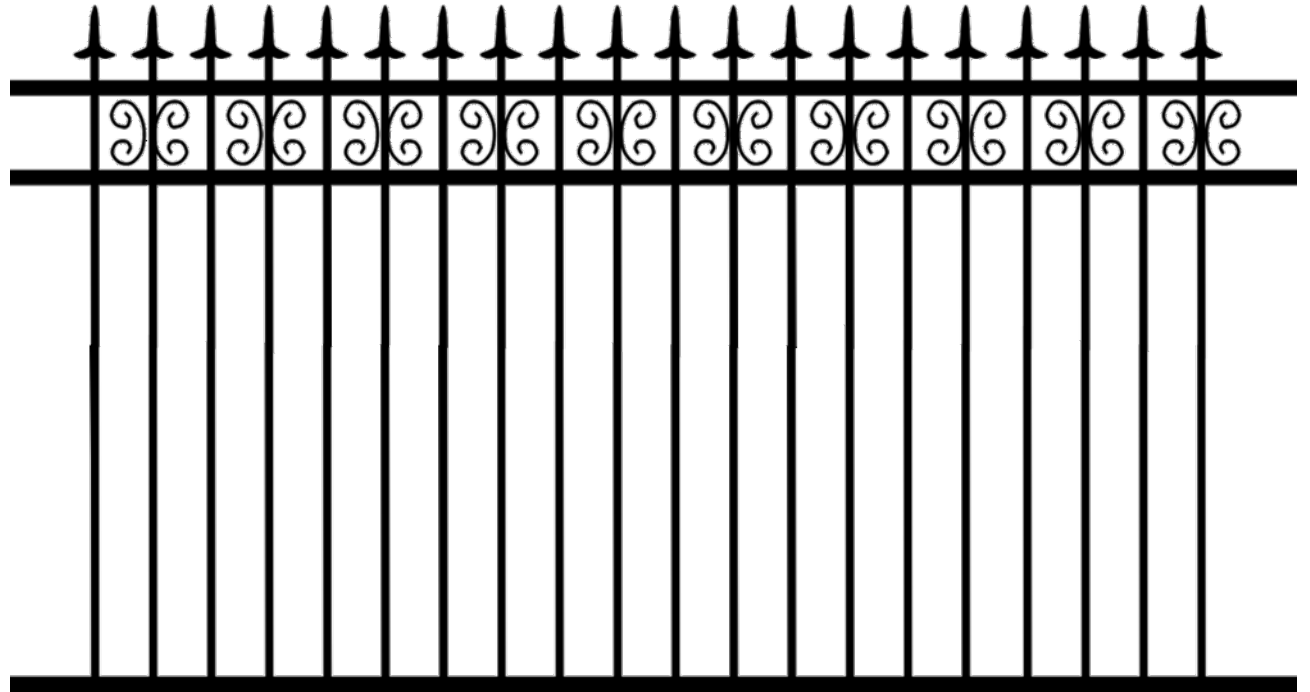
Which of these fits?

alive

was alive

never alive

iron
fence



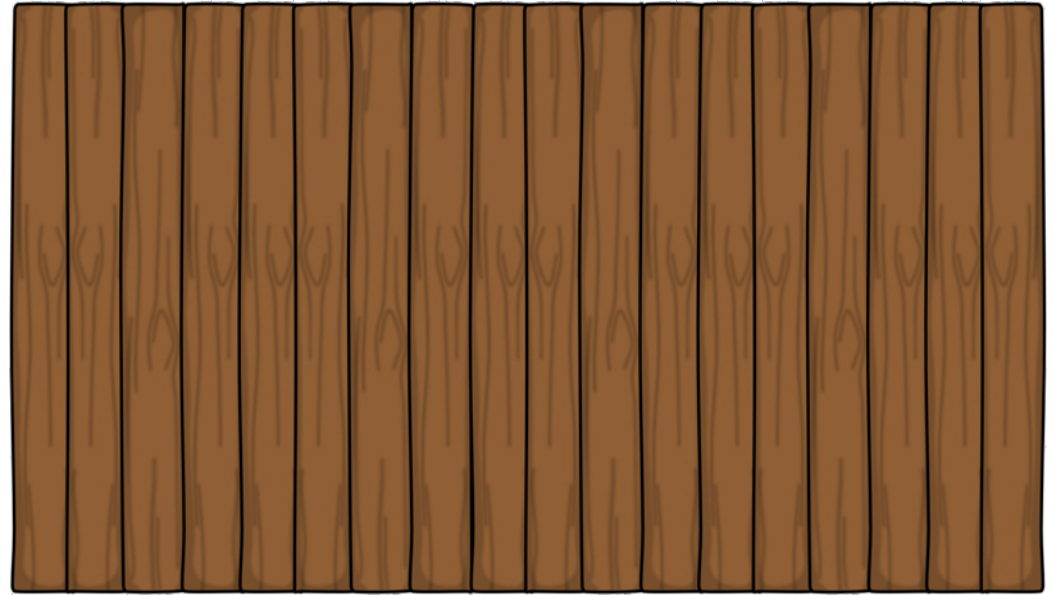
Which of these fits?

alive

was alive

never alive

wooden
fence



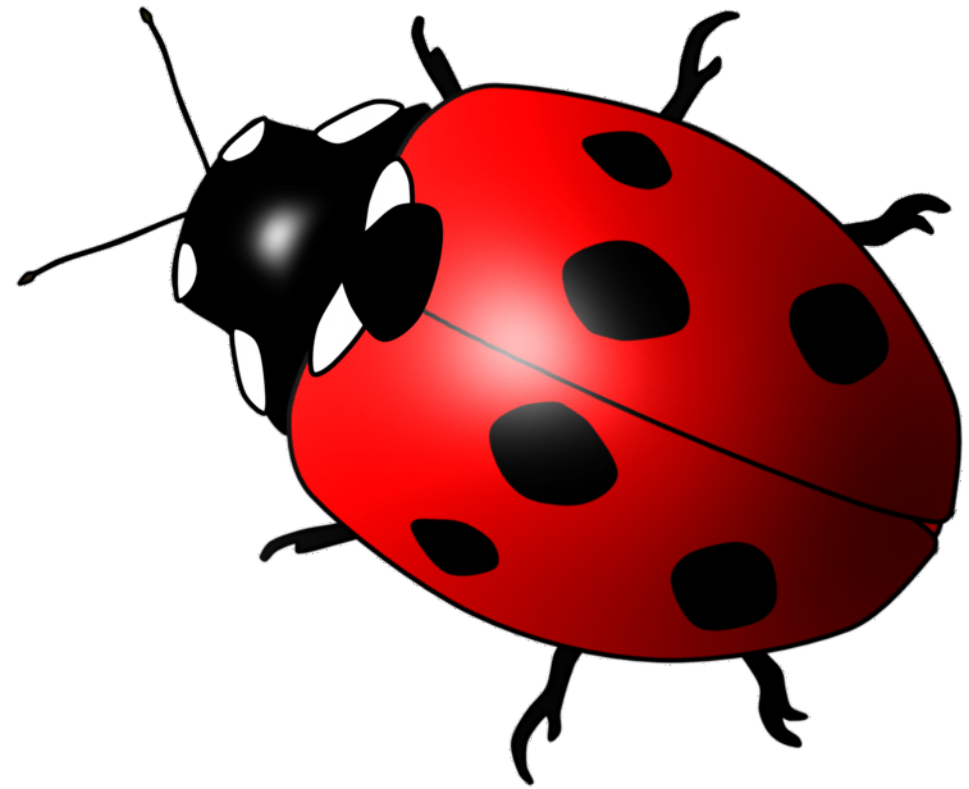
Which of these fits?

alive

was alive

never alive

ladybird



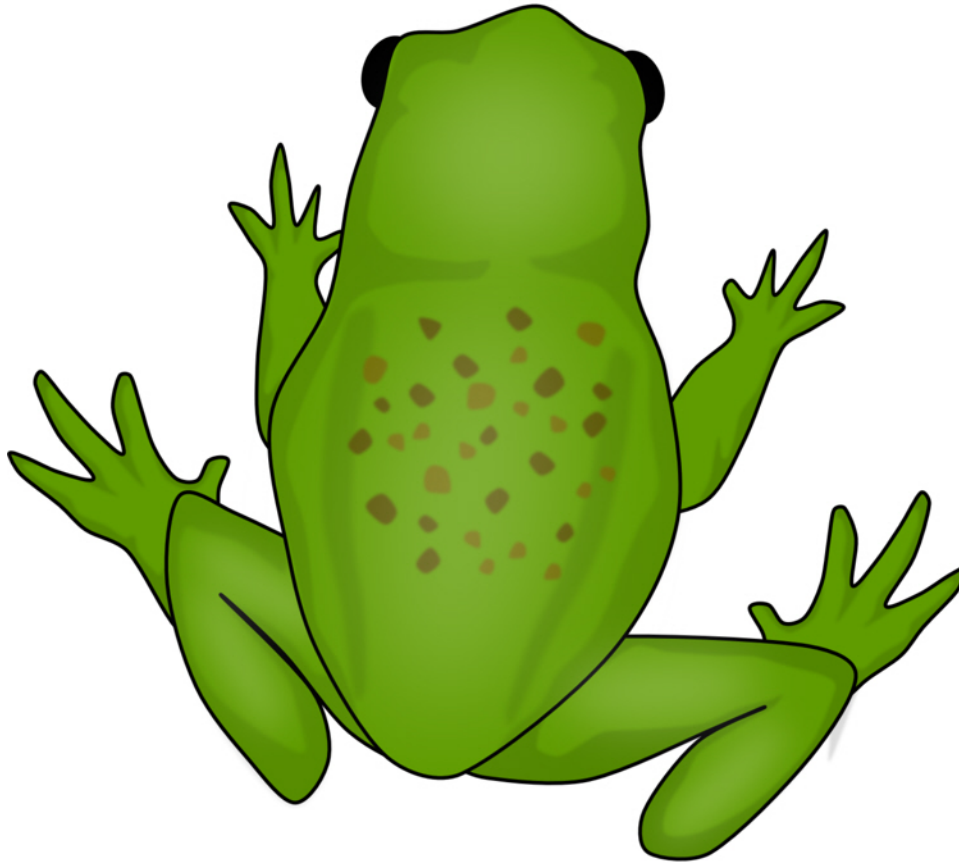
Which of these fits?

alive

was alive

never alive

frog



Which of these fits?

alive

was alive

never alive

fallen
leaves



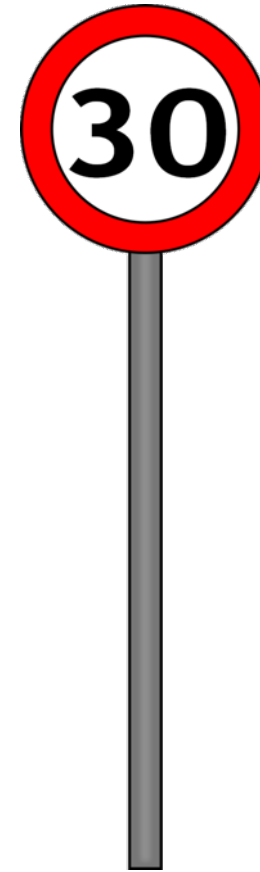
Which of these fits?

alive

was alive

never alive

road sign



Which of these fits?

alive

was alive

never alive

butterfly



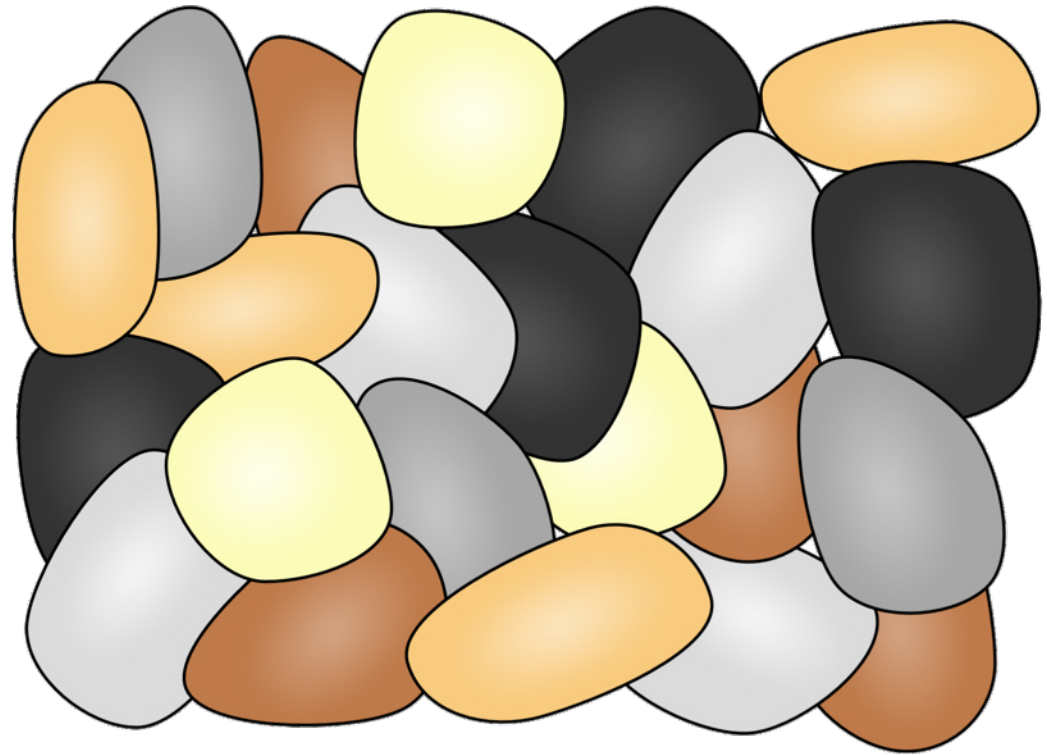
Which of these fits?

alive

was alive

never alive

pebbles



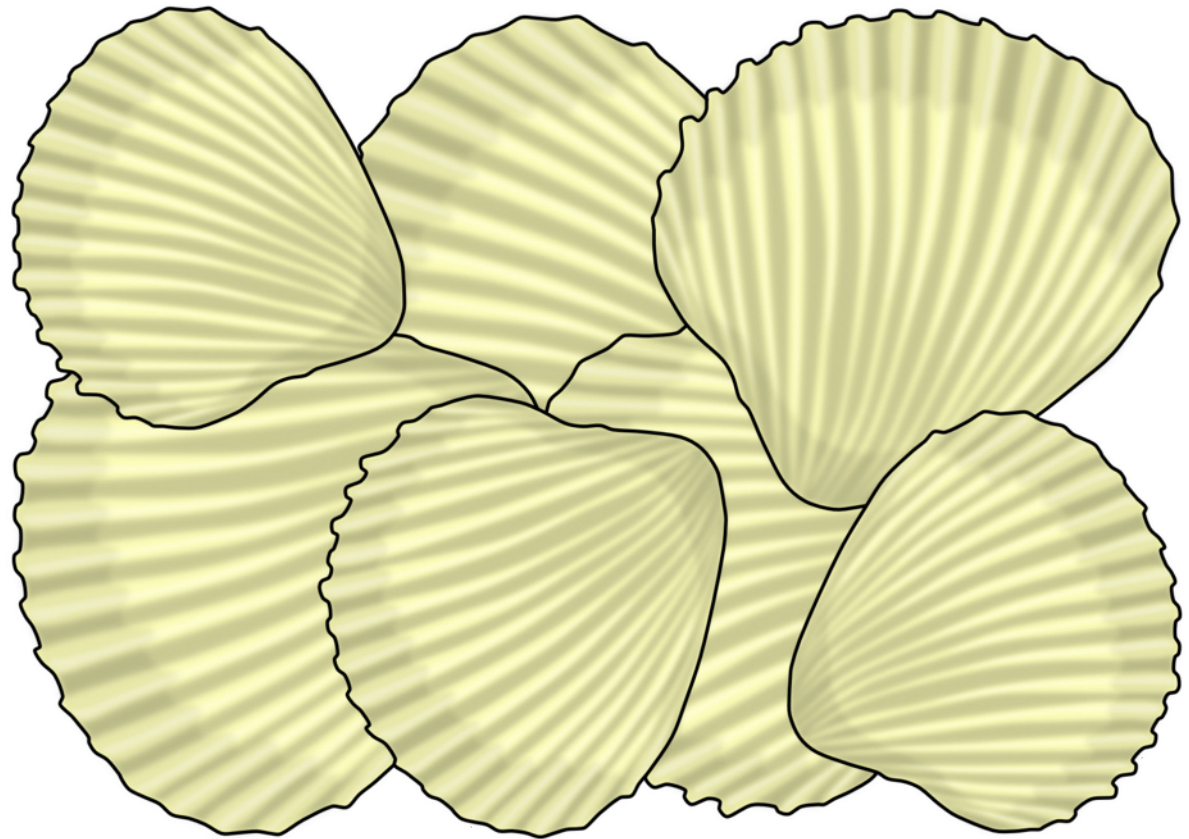
Which of these fits?

alive

was alive

never alive

sea
shells



Which of these fits?

alive

was alive

never alive

bird



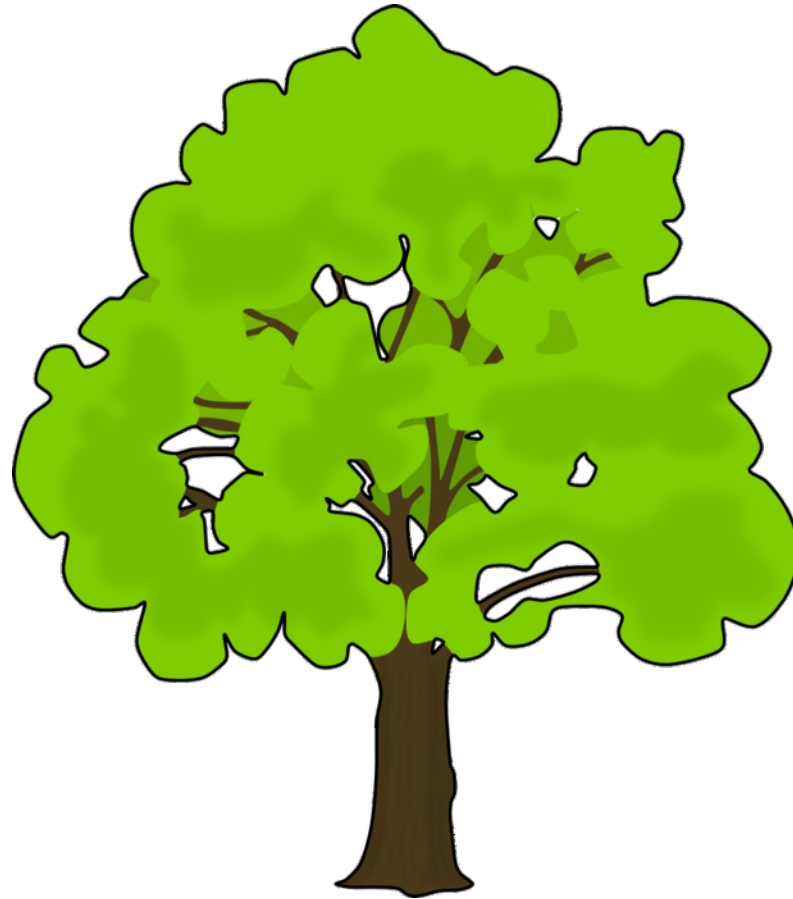
Which of these fits?

alive

was alive

never alive

tree



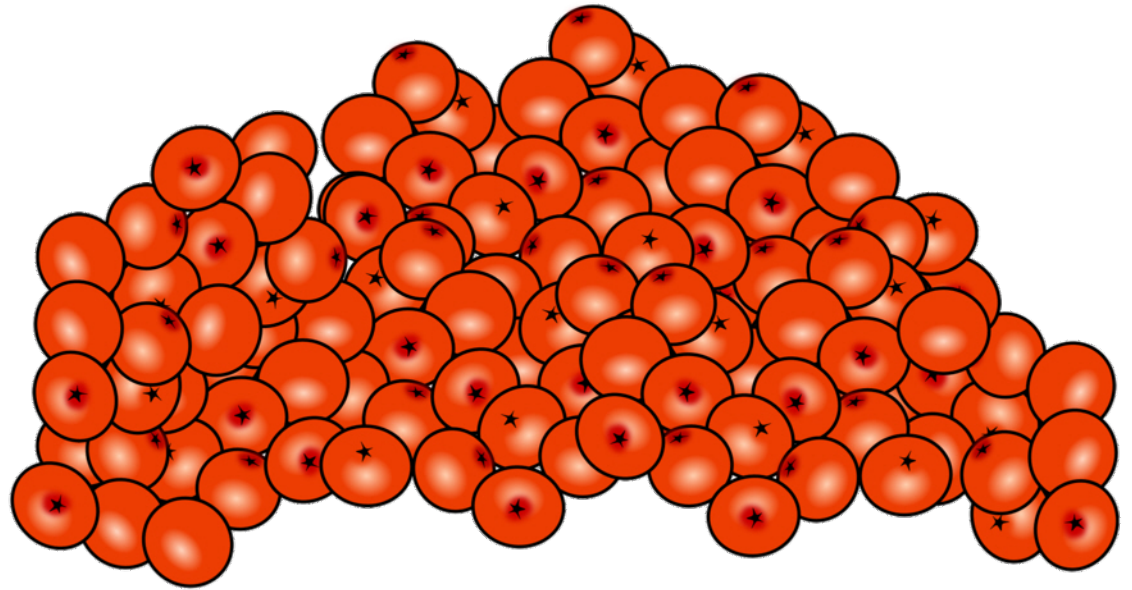
Which of these fits?

alive

was alive

never alive

fallen
berries



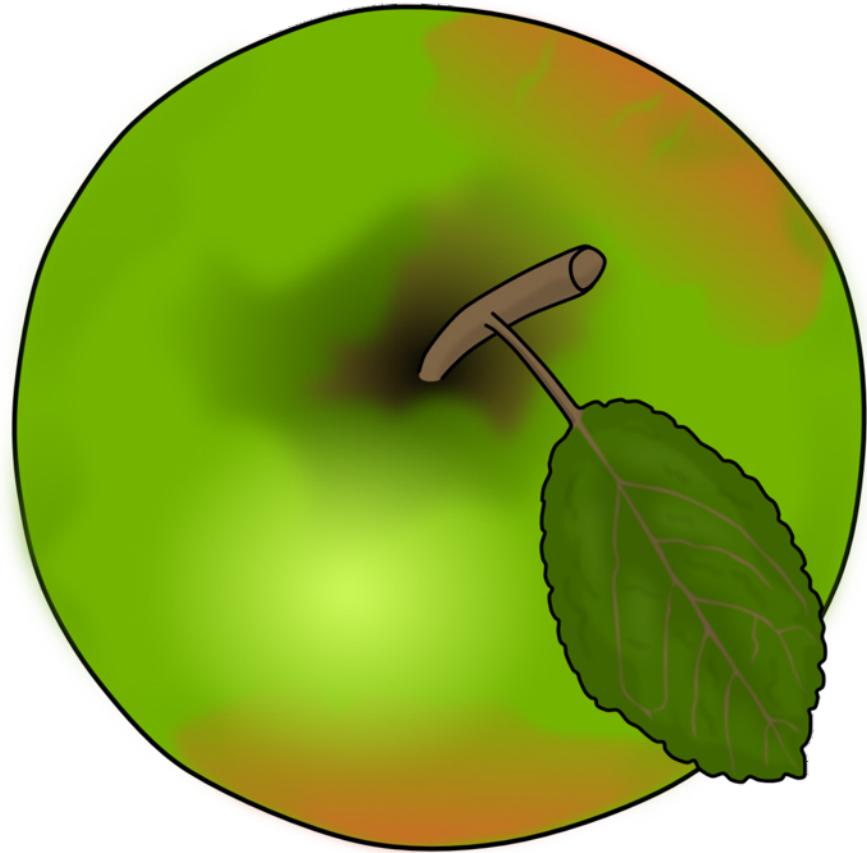
Which of these fits?

alive

was alive

never alive

fallen
apple



Which of these fits?

alive

was alive

never alive

post box



Which of these fits?

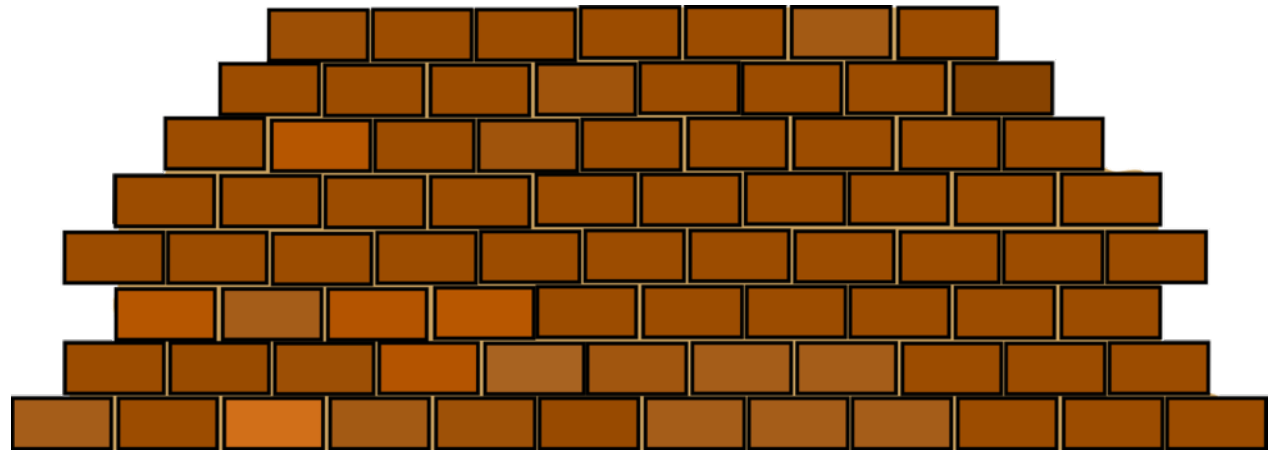
alive

was alive

never alive

brick

wall



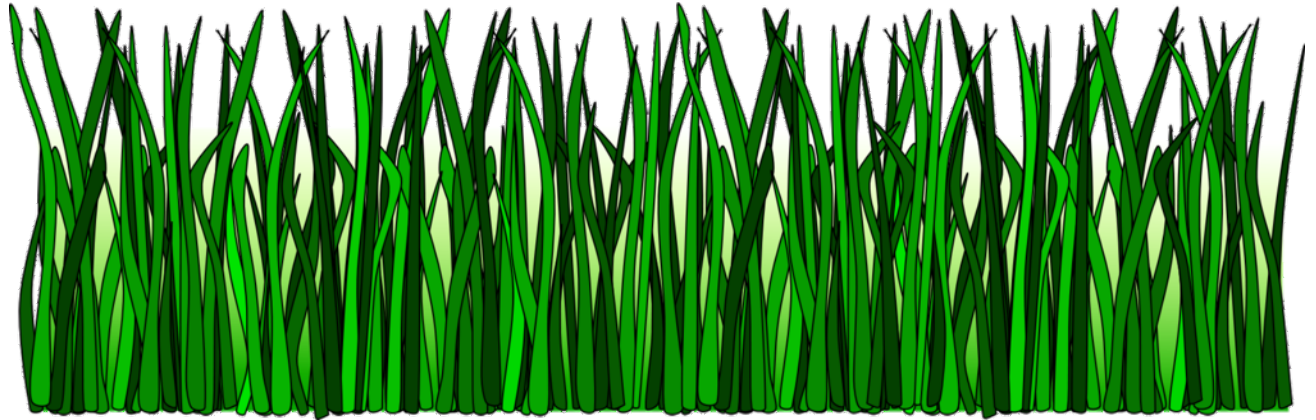
Which of these fits?

alive

was alive

never alive

grass



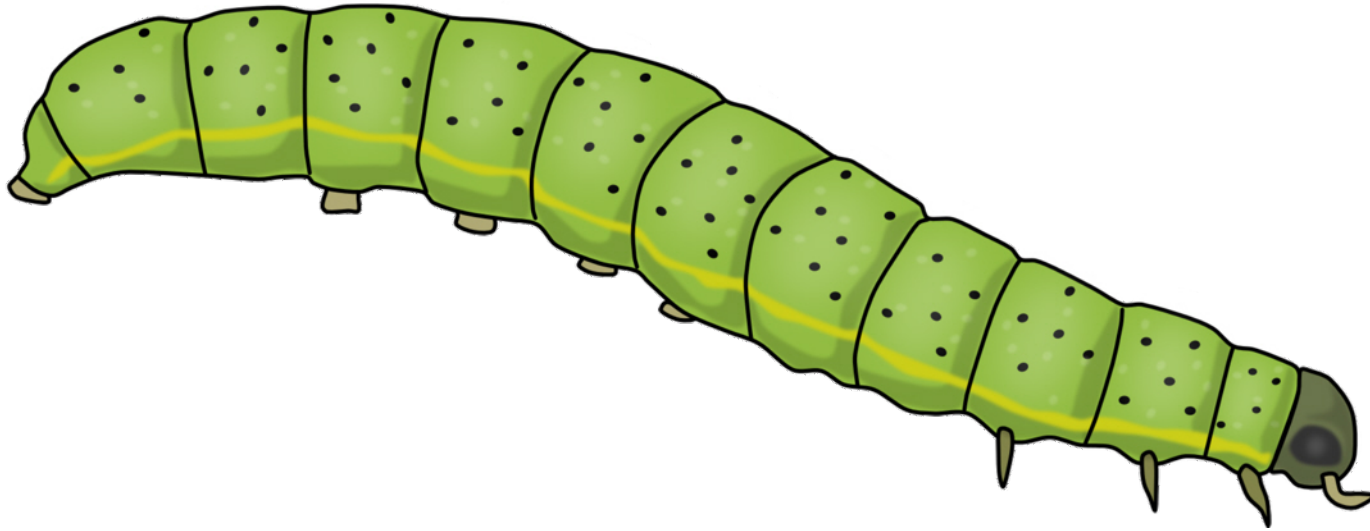
Which of these fits?

alive

was alive

never alive

caterpillar



Which of these fits?

alive

was alive

never alive

street light



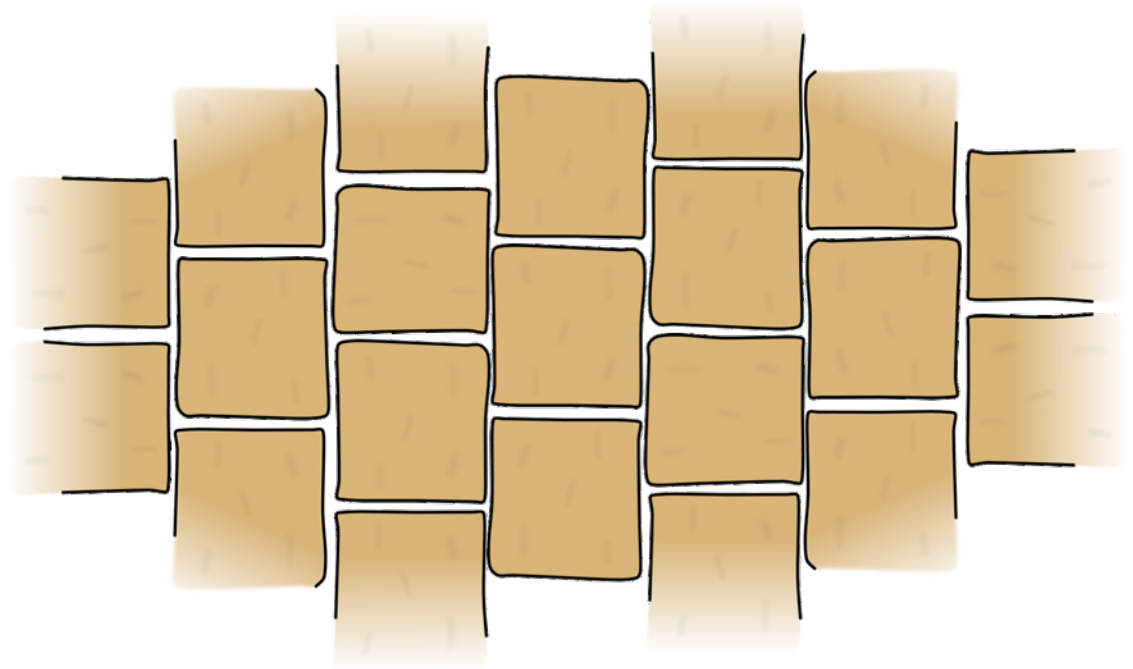
Which of these fits?

alive

was alive

never alive

paving
slabs



Which of these fits?

alive

was alive

never alive

flower



Which of these fits?

alive

was alive

never alive