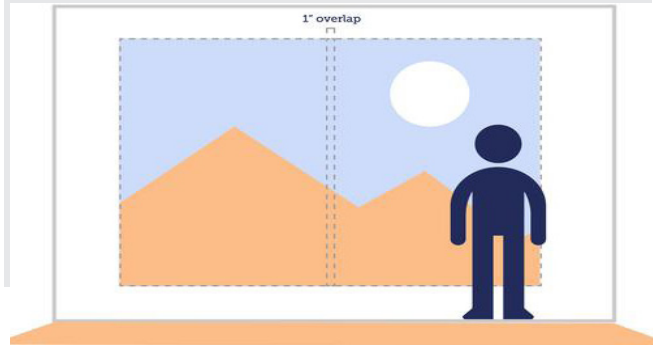


PREP THE WALL



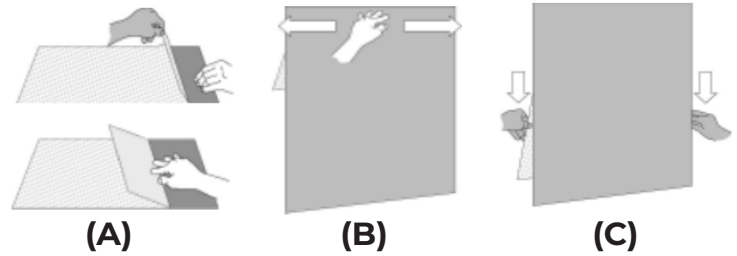
- CHECK THAT THE WALL HAS BEEN PRIMED AND PAINTED. IF NOT, WE RECOMMEND USING THE VALSPAR MULTI SURFACE PRIMER AND ALLOW 24 HOURS TO DRY. CANT WAIT OR WANT BULLET PROOF THEN USE THE ROMAN PRO 880 AND WET APPLY.
- IF THE WALL WAS RECENTLY PAINTED, PLEASE WAIT 30 DAYS TO MAKE SURE THE PAINT HAS COMPLETELY OUTGASSED AND TEST FIRST.
- **IMPORTANT METHOD OF CLEANING IS TO USE 70% ISOPROPLY ALCOHOL & 30% WATER AND CLEAN IT AT LEAST (2X) TWO TIMES WITH A FRAYLESS RAG. ALWAYS WIPE IN ONE DIRECTION!!**

OVERLAPPING



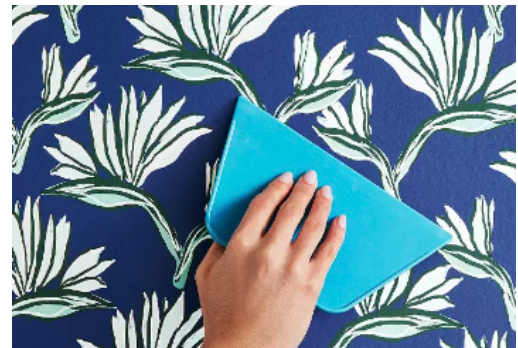
WE SUGGEST A 1" OVERLAP WHEN USING THE OPAQUE VERSIONS. DO NOT TRY TO SPLIT CUT AS IT CAN LEAVE A WHITE LINE. IT IS OK TO SPLIT CUT THE OVER-LAP ON THE NON-OPAQUE VERSIONS. BE CAREFUL USING TAPE TO ALIGN THE MATERIAL WITH LATEX INKS. REMOVING IT TOO FAST CAN PULL THE INK OFF.

WALL APPLICATION



- BEGIN APPLICATION BY PEELING BACK THE BACK LINER 8-10" AND CREAMING THE UNDER-LINER.
 - ALIGN THE MATERIAL ON THE WALL AT YOUR DESIRED STARTING POINT.
 - ONCE IN POSITION, PEEL BACK LINER 6-8" AT A TIME.
- SQUEEGEE THE MATERIAL FROM THE MIDDLE TO THE EDGES. APPLY GOOD PRESSURE DURING APPLICATION.
 - OK TO PEEL AND RE-APPLY TO RELEASE BUBBLES.

TIPS + TRICKS



- USE NON-OPAQUE VERSIONS ONLY FOR GLASS, OR METAL SURFACES.
- USE EXS HIGH TACK WITH UV INKS FOR SMOOTH FLOORS AND TIGHT WEAVE CARPET
- USE THE OPAQUE VERSIONS WHEN OVERLAPPING/ PANELING.
- USE A VERY SHARP KNIFE WHEN CUTTING THE FABRIC. CHANGE FREQUENTLY
- RECOMMEND THE OPA OVER THE OPAS WHEN PRINTING ON UV, LATEX INKS.

SUGGESTIONS

*PHOTO TEX CAN BE RE-POSITIONED MULTIPLE TIMES, ONCE THE ADHESIVE COLLECTS TOO MUCH DUST, DIRT OR FIBERS, IT WILL BECOME LESS EFFECTIVE IN STICKING PROPERLY TO THE SURFACE.

*IF A BUBBLE RE-APPEARS, LIGHTLY RUBBING AND PRESSING CAN REMOVE IT. IF THE BUBBLE COMES BACK, THEN YOU WILL NEED TO PEEL BACK THE MATERIAL AND RE-APPLY.