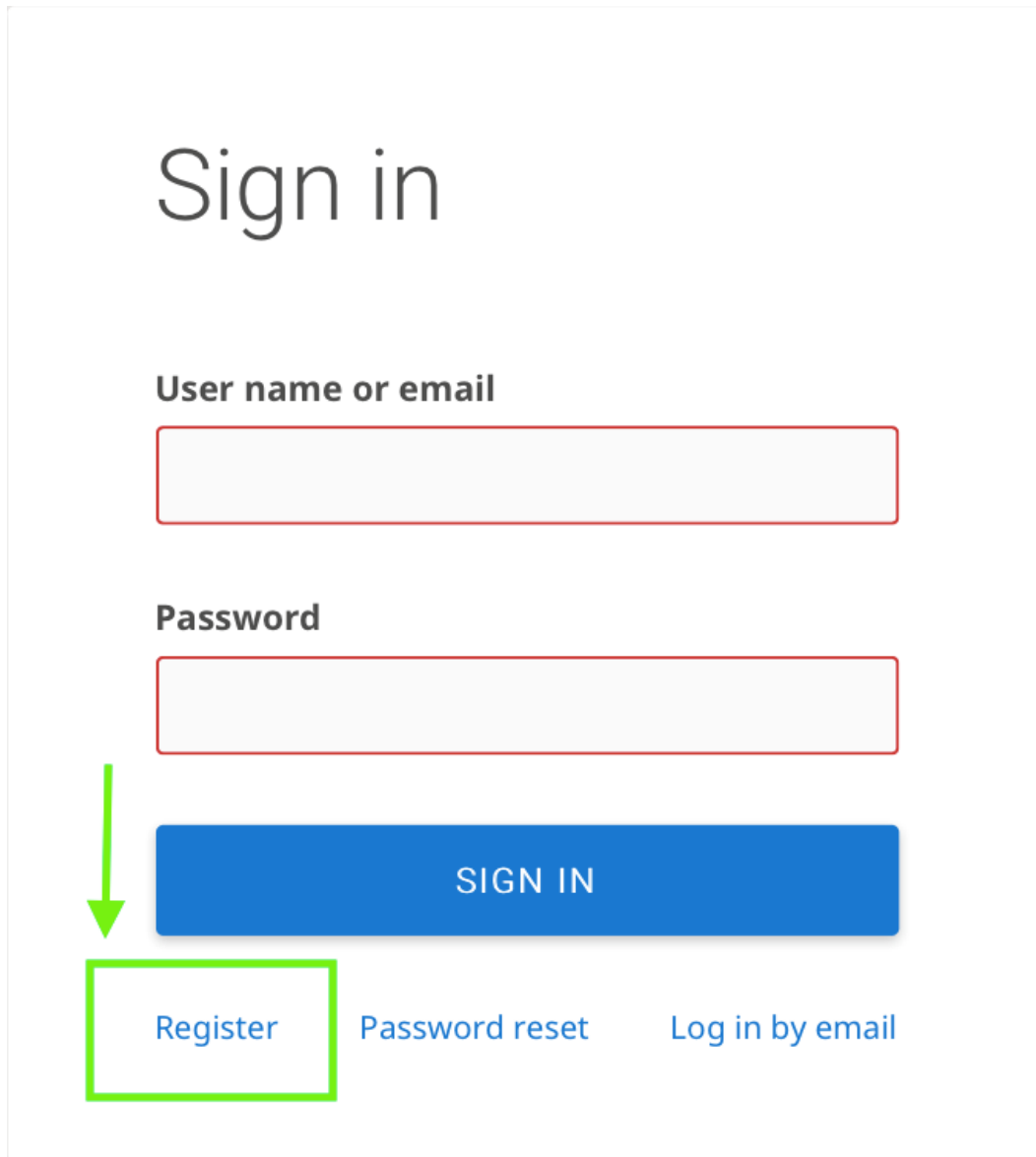


STEPS TO PARTICPATE & THINGS TO NOTE DURING THE TOURNAMENT

How to create a Lichess user ID?

In case you do not have a Lichess ID, you can create one here: <https://lichess.org/signup>.
Click on Register as shown below in **Image 1**



The image shows a screenshot of the Lichess sign-in page. At the top, the text "Sign in" is displayed in a large, grey font. Below this, there are two input fields: "User name or email" and "Password", both with red borders. A blue button labeled "SIGN IN" is positioned below the password field. A green arrow points from the "SIGN IN" button down to a green-bordered box around the "Register" link. To the right of the "Register" link are the links "Password reset" and "Log in by email".

Image 1



Create a user name and password of your choice

Enter your registered email ID and click and agree on the Terms & Conditions as mentioned below in **Image 2**. Click on register and enter the username in the registration form.

Register

User name

Password

Email

We will only use it for password reset.

i Computers and computer-assisted players are not allowed to play. Please do not get assistance from chess engines, databases, or from other players while playing. Also note that making multiple accounts is strongly discouraged and excessive multi-accounting will lead to being banned.
By registering, you agree to be bound by our [Terms of Service](#).

I agree that I will at no time receive assistance during my games (from a chess computer, book, database or another person).

I agree that I will always be nice to other players.

I agree that I will not create multiple accounts.

I agree that I will follow all Lichess policies.

REGISTER

Image 2



Step 2: Join Team and Tournament

- Click on the **Team Link** provided by the organisers on your registered email ID.
- Click on **“JOIN TEAM”** as mentioned below in **Image 3**.

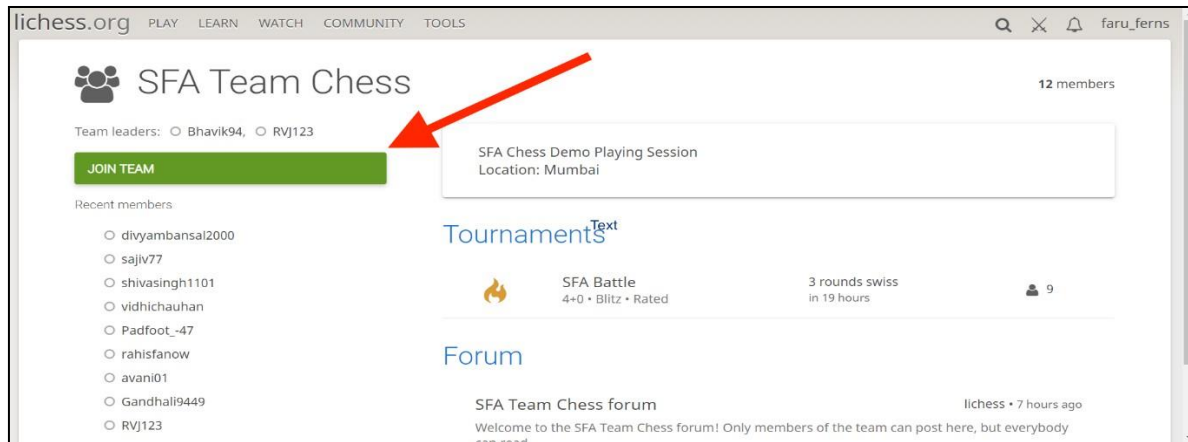


Image 3

- Click on the **tournament tab** as mentioned in **Image 4**
OR
Click on the **Tournament Link** provided by the organisers on your registered email ID to enter the Tournament.



Please click on the Team and Tournament link provided on your registered Email ID. In case a player is found playing in another tournament within the Super 30 Chess Challenge 3.0 Tournament then he / she will be disqualified from the tournament.

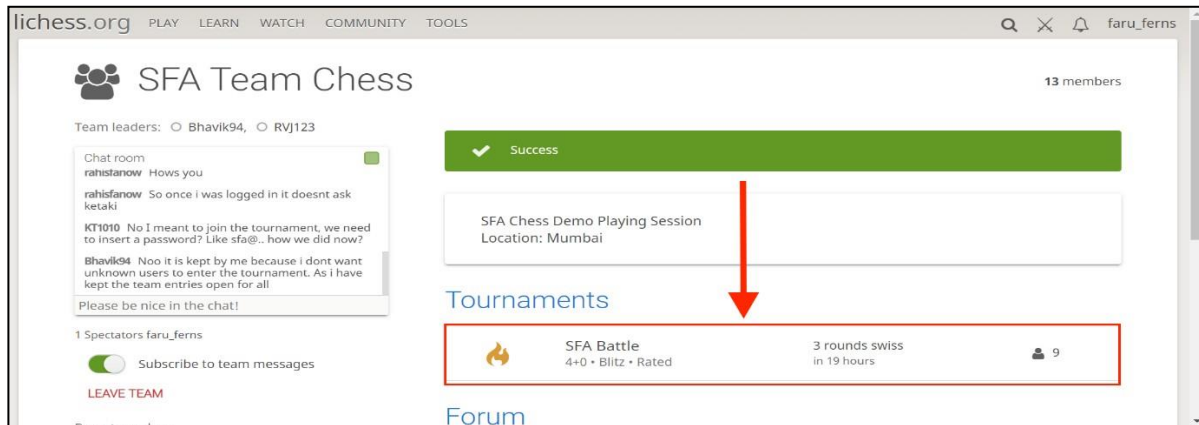


Image 4

- Click on "Join" to successfully enter the tournament as mentioned below in Image 5

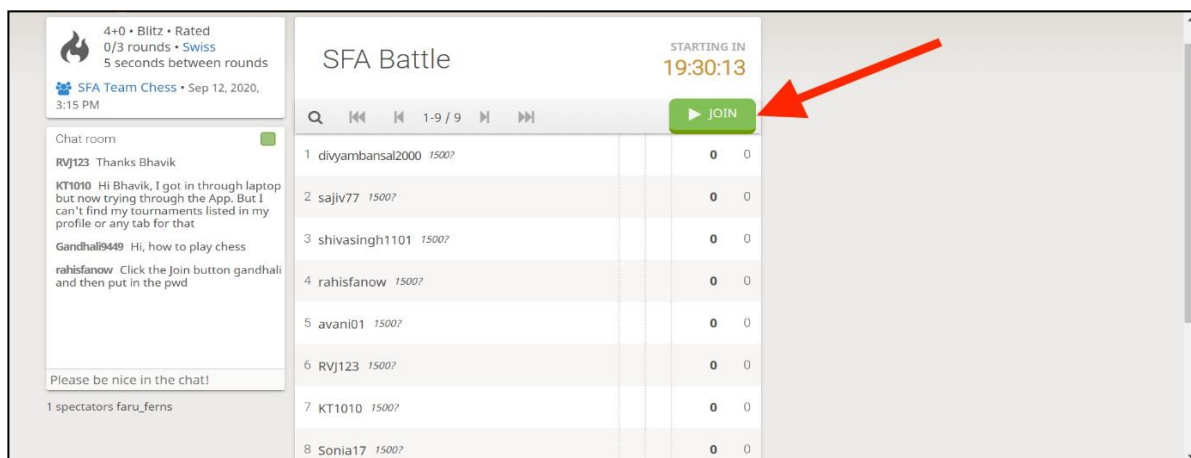


Image 5

- Enter the password sent to you on your registered email ID as mentioned below in Image 6
 - Please note do not enter your Lichess Sign In password here

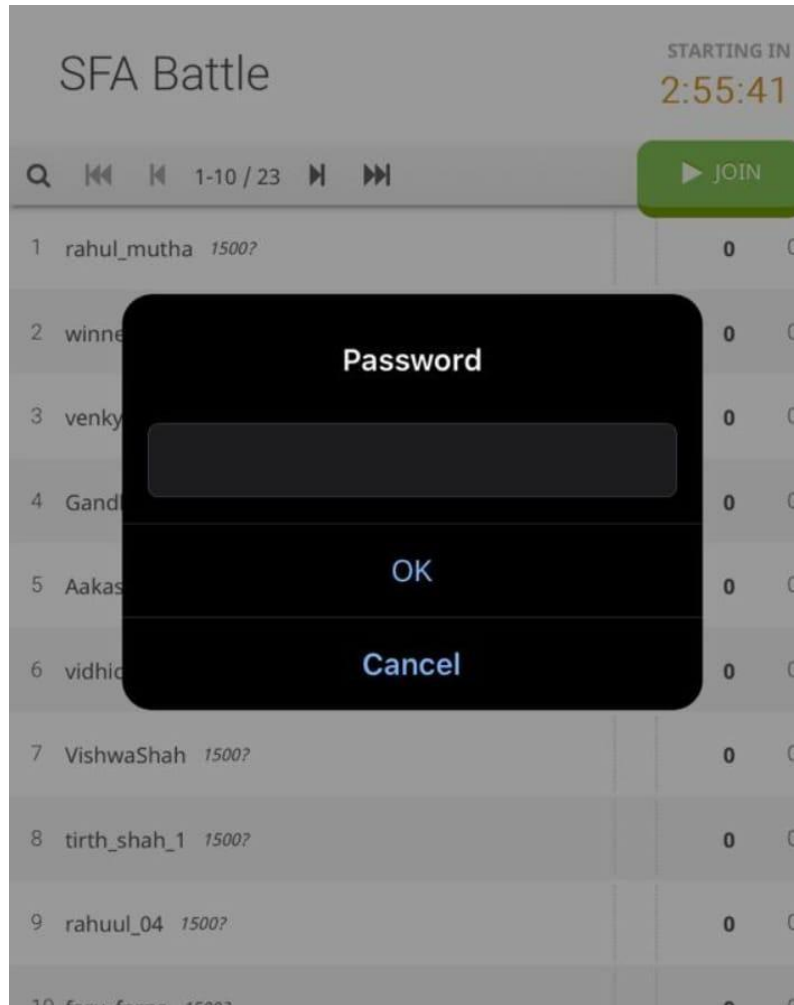


Image 6

You have successfully entered the tournament!

You can now log in 15 minutes prior to your match schedule.

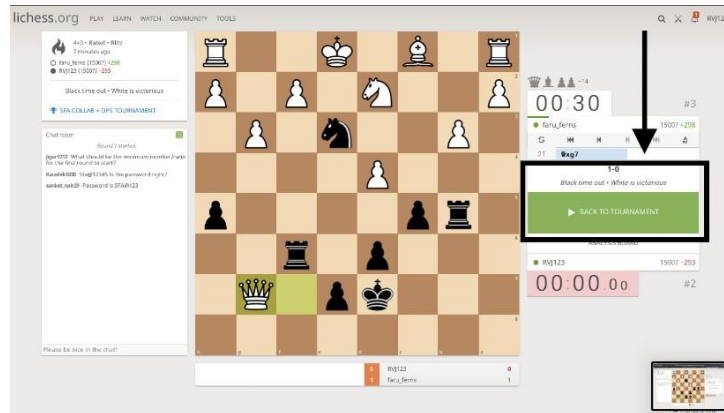
IMPORTANT THINGS TO NOTE DURING THE TOURNAMENT

- Once you finish the current match, click on **"Back to Tournament"** as mentioned below in **Image 7 (Mobile view) & Image 8 (Desktop/ laptop view)** and wait for the next match to start automatically. **DO NOT CLICK ANYWHERE ELSE.**



Mobile view on Google Chrome

Image 7



Desktop / Laptop view on Google Chrome

Image 8

ALL THE BEST!!!