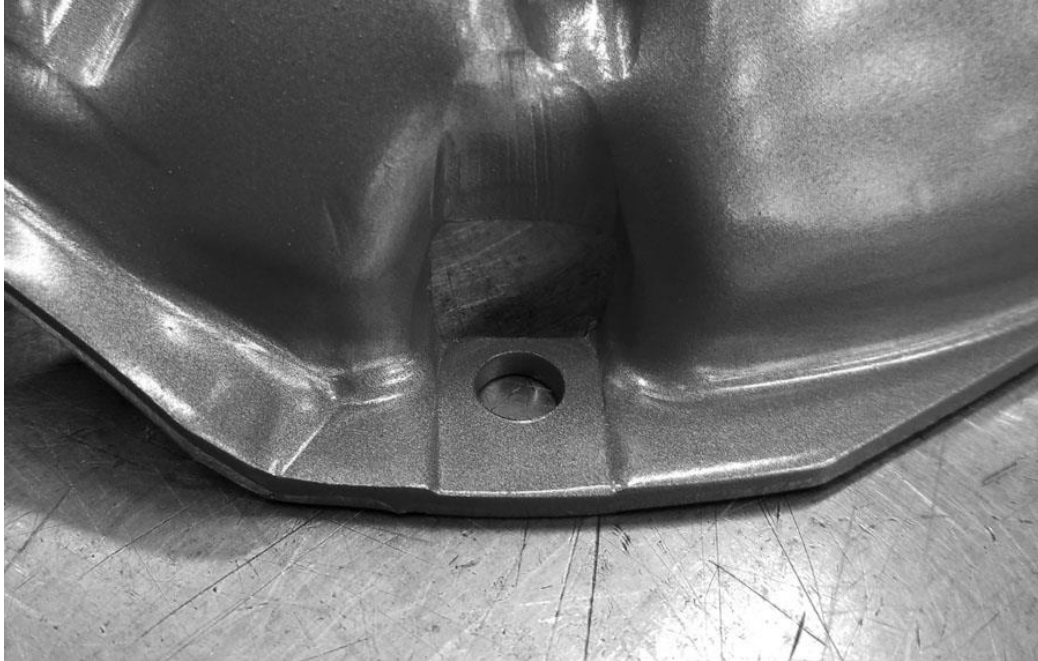


Special Instruction Sheet

DODGE/CHRYSLER

CLUTCH SETS: 88503, 88503HDX, 92503, 98503, 98503HD, 88772, 92772, 88772HDX, 98772, 98772HD, 88773, 92773, 88773HDX, 98773, 98773HD



10.95 Borg & Beck clutches require a small head pressure plate bolt to avoid contact between the bolt head and the clutch disc through the bolt hole windows. Use bolt set 490 to correct this issue.

Failure to do so will result in potential non-release or dragging of the clutch disc. Warranty will not be honored for issues related to bolt head clearance.