

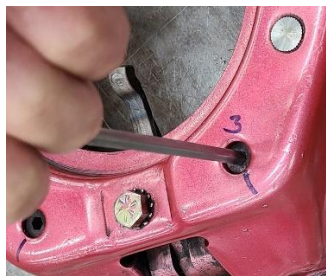
INSTRUCTIONS FOR USING RAM ADJUSTABLE LONG STYLE PRESSURE PLATES

*NOTE: ALL ADJUSTABLE PRESSURE PLATES ARE SHIPPED SET ON THE
MINIMUM PRESSURE*

Pressure adjustments are made via 5 – 7/32” allen head screws located on top of the pressure springs, accessible through the spring guide hole on top of the cover. To add spring pressure, the adjuster screw is rotated COUNTER-CLOCKWISE, clock-wise to lower pressure. You cannot adjust the pressure lower than the stated base pressure of the clutch. When set at base pressure, the screw will have about a half turn either direction where it feels loose. Turn the adjuster counterclockwise until you feel some pressure, then begin your count from there. Add the number of turns pressure times the 6 springs to determine the setting. **The maximum turns on any adjuster is 7.** Adjusting further will pull the screw out of the adjuster body, and require the unit be disassembled to repair.

When starting with a new unit, **ALWAYS** set the pressure higher than you ultimately think you will need in order to seat the disc. After a few runs, you can begin to back the pressure down as needed.

TO ZERO PRESSURE, slowly turn the adjuster screws in clockwise until the tension is relieved.



PRESSURE SETTINGS/TURNS PER UNIT

| PART NO. | PSI RANGE | ONE TURN | MAX TURNS |
|--------------|-----------|----------|-----------|
| • 435, 435CW | 1200-2040 | 20 LBS. | 7 |
| • 448, 448CW | 1500-2340 | 20 LBS. | 7 |
| • 438, 438CW | 1800-2740 | 20 LBS. | 7 |
| • 458, 458CW | 2200-2800 | 20 LBS. | 5 |
| • 470, 470CW | 360-990 | 15 LBS. | 7 |
| • 471, 471CW | 800-1640 | 20 LBS. | 7 |
| • 472, 472CW | 500-1130 | 15 LBS. | 7 |
| • 473, 473CW | 1200-2040 | 20 LBS. | 7 |
| • 670, 670CW | 360-990 | 15 LBS. | 7 |
| • 671, 671CW | 800-1640 | 20 LBS. | 7 |
| • 672, 672CW | 500-1130 | 15 LBS. | 7 |
| • 673, 673CW | 1200-2040 | 20 LBS. | 7 |

COUNTERWEIGHT ADJUSTMENTS

| | |
|--------------------------|------|
| • STEEL BOLT ¼-20 X 1 ¼ | 9.3G |
| • STEEL BOLT ¼-20 x 1 | 7.6G |
| • STEEL BOLT ¼-20 X ¾ | 6.4G |
| • ALUMINUM BOLT ¼-20 X ¾ | 2.2G |
| • STEEL NUT | 3.3G |
| • ALUMINUM NUT | 1.1G |
| • STEEL WASHER | 1.0G |

TUNING TIPS/VIDEO AT ramclutches.com/get-tech-help/