



GOSTANFORD.COM • #GOSTANFORD



2018-19 SCHEDULE AND RESULTS

NOVEMBER

7	UC Davis	W, 71-43
11	Idaho	W, 115-71
15	San Francisco	W, 96-62
18	Ohio State (P12N)	canceled
23	vs. FGCU (1)	W, 88-65
24	vs. American (1)	W, 71-49
25	at Hawaii (1)	W, 81-59

DECEMBER

2	at Gonzaga	L, 73-79
15	#3/4 Baylor (P12N)	W, 68-63
18	at #9/8 Tennessee (SECN)	W, 95-85
21	at Buffalo (ESPN+)	W, 62-55
29	CSUN	W, 69-43

JANUARY

4	USC * (P12N)	W, 72-64
6	UCLA * (P12N)	W, 86-80
11	at #19/19 Arizona State * (P12N)	W, 72-65
13	at Arizona * (P12N)	W, 78-48
18	Washington * (P12N)	W, 91-54
20	Washington State * (P12N)	W, 85-64
25	at Colorado * (P12N)	W, 80-69
27	at #21/24 Utah *	L, 68-75
31	at California * (P12N)	L, 80-81

FEBRUARY

2	California * (P12N)	4 p.m.
8	Oregon State * (P12N)	6 p.m.
10	Oregon * (ESPN2)	1 p.m.
15	at UCLA * (P12N)	6 p.m.
17	at USC * (P12N)	noon
22	Arizona *	7 p.m.
24	Arizona State * (P12N)	1 p.m.

MARCH

1	at Washington State * (P12N)	7 p.m.
3	at Washington * (P12N)	2 p.m.
7-10	Pac-12 Tournament (2)	TBD

(1) - Rainbow Wahine Showdown; Honolulu, Hawaii

(2) - Pac-12 Tournament; Las Vegas, Nev.

\* - Pac-12 game;

All times local and subject to change;

Home games in Bold;

[#/#] - Indicates national ranking (AP/USA Today)

(P12N) - Game televised on Pac-12 Networks

(ESPN2/SECN) - Game televised on ESPN family of networks

Athletic Communications

Director ..... John Cantalupi  
 Cell Phone ..... (650) 924-8304  
 E-Mail ..... johncan@stanford.edu

**THE GAME:** Off to its best 20-game start since going to the Final Four in 2016-17, No. 8 Stanford (17-3, 7-2) hosts Cal (14-6, 5-4) on Saturday, Feb. 2 at 4 p.m. Kate Scott and Mary Murphy have the call on Pac-12 Networks and Tim Swartz will handle the radio broadcast on GoStanford.com.

**THE RUNDOWN:** Losers of two straight, Stanford has not dropped three in a row in the same season since 2000-01 ... Tara VanDerveer won her 900th game at Stanford on Jan. 20 against Washington St. ... Alanna Smith is one of two players nationally shooting better than 46 percent both overall and from deep ... DiJonai Carrington's 33-point, 13-rebound, four 3-pointer effort against Tennessee was the second for a player in the past 20 years against a ranked opponent ... Stanford is one of three schools in the nation with a pair of top-10 wins ... The Cardinal is 18th in the country in scoring offense (80.1) and 19th in field goal percentage (.461) ... Alanna Smith is the only player in the country averaging 21.0 points, 8.0 rebounds, 2.0 assists and 2.0 blocks per game ... DiJonai Carrington is averaging 16.1 points and 9.6 rebounds in the last 12 games with five double-doubles ... Alanna Smith is averaging 23.5 points, 10.2 rebounds and 3.2 blocks in the last 11 with six double-doubles ... Haley Jones, the nation's consensus No. 1 recruit, announced her commitment on Nov. 28, the first top player to sign with Stanford since Chiney Ogwumike in Nov. 2009 ... Stanford has been outscored by 48 points from behind the arc (105-57) in its last three games ... The Cardinal hit 39 percent of its 3-pointers in the first 17 games and is at 24.1 percent in the last three.

STANFORD AT A GLANCE

Game 21

Overall Record .....	17-3
Pac-12 Record .....	7-2
Home Record .....	9-0
Road Record .....	6-3
Neutral Record .....	2-0

HEAD COACH TARA VANDERVEER

Stanford Record (33rd year) .....	901-194
Career Record (40th year) .....	1,053-245
All-Time vs. California .....	62-12

SERIES HISTORY

All-Time vs. California .....	69-21
At Stanford .....	32-8
At California .....	30-13
Streak .....	Cal, 2
Last Stanford Win .....	2/15/18 (74-69 @ STAN)
Last California Win .....	1/31/19 (81-80 @ CAL)

**VS. CAL:** Stanford is 69-21 all-time against Cal, 32-8 against the Bears at home and has won 19 of the last 23 in the series. The Cardinal has won three in a row over Cal in Maples, 53-46 in 2016, 72-54 in 2017 and 74-69 in 2018. Kiana Williams scored a career-high 26 points on 7-of-12 shooting and 5-of-7 from deep in last season's home victory in the rivalry. The two schools played the first intercollegiate women's basketball game on April 4, 1896 at a San Francisco armory on Page Street the day before Easter. Stanford won 2-1.

STANFORD PROBABLE STARTERS

No.	Player	Pos.	Ht.	Yr.	PPG	RPG	APG
11	Alanna Smith	F	6-4	Sr.	21.2	8.3	2.5 (BPG)
15	Maya Dodson	F	6-3	So.	8.9	4.2	1.6 (BPG)
21	DiJonai Carrington	G	5-11	Jr.	13.6	7.8	1.7
23	Kiana Williams	G	5-8	So.	14.4	2.4	5.0
24	Lacie Hull	G	6-1	Fr.	5.5	2.4	2.1

STANFORD OFF THE BENCH

No.	Player	Pos.	Ht.	Yr.	PPG	RPG	APG
2	Shannon Coffee	C	6-5	Sr.	1.5	1.4	0.8
3	Anna Wilson	G	5-9	Jr.	3.1	1.4	0.9
4	Nadia Fingall (OUT FOR SEASON)	F	6-3	Jr.	8.0	4.9	1.7
10	Alyssa Jerome	F	6-3	So.	3.8	3.1	0.8
12	Lexie Hull	G	6-0	Fr.	6.2	5.1	0.7
13	Marta Snizek	G	5-8	Sr.	--	--	--
14	Mikaela Brewer	G	5-10	Jr.	1.5	0.6	0.1
20	Estella Moschkau	G	6-1	So.	1.2	0.5	0.3
54	Jenna Brown	G	5-10	Fr.	2.2	1.3	1.1

**QUICK FACTS****The University**

Location ..... Stanford, Calif.  
 Founded..... 1891  
 Enrollment..... 16,424 (7,056 undergraduate)  
 Nickname..... Cardinal  
 Colors..... Cardinal and White  
 Affiliation ..... NCAA Division I  
 Conference ..... Pac-12  
 President ..... Marc Tessier-Lavigne  
 Provost..... Persis Drell  
 Director of Athletics..... Bernard Muir  
 Faculty Representative ..... Jeff Koseff  
 Senior Women's Administrator..... Beth Goode  
 Athletic Department Phone ..... 650-723-4591  
 Ticket Office Phone ..... 800-STANFORD  
 Home Facility..... Maples Pavilion  
 Capacity ..... 7,233  
 Web Site ..... www.gostanford.com

**Stanford Women's Basketball History**

First Year ..... 1974-75 (45 seasons)  
 All-Time Record ..... 1,077-332 (.764)  
 All-Time Pac-12 (since 1986-87) ..... 507-77 (.868)  
 NCAA Championships ..... 2 (1990, 1992)  
 NCAA Tournament Appearances ..... 32 (86-30)  
 Last NCAA Tournament Appearance ..... 2018  
 NCAA Final Four Appearances ..... 13  
 Last NCAA Final Four Appearance ..... 2017

**Staff Information**

Head Coach ..... Tara VanDerveer (33rd season)  
 Alma Mater ..... Indiana, 1975  
 Stanford Record ..... 901-194/33 seasons  
 Career Record..... 1,053-245/40 seasons  
 Associate Head Coach..... Kate Paye (12th season)  
 Alma Mater ..... Stanford, 1995  
 Assistant Coach ..... Tempie Brown (sixth season)  
 Alma Mater ..... Michigan, 1990  
 Assistant Coach ..... Lindy La Rocque (second season)  
 Alma Mater ..... Stanford, 2012  
 Operations..... Eileen Roche (Ohio Wesleyan '81)  
 Administrator..... Amy Tucker (Ohio State, '82)  
 Video Coordinator..... Hana Potter (Washington St. '14)  
 Athletic Trainer..... Katelin Knox (Santa Clara '09)  
 Sports Performance ..... Brittany Keil (Holy Cross '07)  
 Basketball Office Phone..... (650) 723-0284

**Team Information**

Letterwinners Returning/Lost .....12/2  
 Starters Returning/Lost .....3/2  
 Newcomers.....3  
 2017-18 Record.....24-11  
 Home .....14-2  
 Away .....6-5  
 Neutral.....4-4  
 2017-18 Conference Record .....14-3  
 Finish ..... 2nd

**NEWS AND NOTES »**

- The Cardinal had its 11-game winning streak snapped last Sunday at Utah. It was tied for the third-longest active streak in the nation.
- Coupled with Thursday's loss at Cal, Stanford has now dropped two consecutive conference games for the first time since 2015.
- The Cardinal hasn't lost three consecutive games in the same season since 2000-01 when it dropped league contests to Arizona (68-65), Oregon State (81-65) and No. 20 Oregon (72-54) in mid-January.
- Stanford entered conference play with a 10-1 record (.909), the first time in five years it suffered just one nonconference defeat.
- The Cardinal's Nov. 18 home contest against Ohio State was canceled due to smoke from the devastating wildfires in Butte County that had compromised the air quality throughout the Bay Area.
- Stanford is currently No. 8 in the AP Top 25 and No. 3 in the NCAA RPI.
- Since 2007-08, the Cardinal owns a conference home record of 97-6 and a Pac-12 road record of 87-16.
- Stanford's 184 conference wins since 2007-08 are the most in the nation (Green Bay/UConn - 183).
- Stanford's all-time Pac-12 record is 507-77 and 150 wins clear of the next closest team (UW - 337).
- The Cardinal was 14-of-14 at the line in Jan. 11's 72-65 win over No. 19 Arizona State, a program record for makes without a miss from the stripe. Stanford had previously gone 13-for-13 against Seattle on Feb. 29, 2012 and Cal on Feb. 11, 2005.
- Stanford is a combined 81-of-101 (.802) on free throws in the last seven games. Prior to that, the Cardinal was shooting 67.0 percent from the line (150-of-224).
- Stanford leads the conference and is 22nd in the country in blocks per game (5.10).
- Tara VanDerveer won her 900th game as head coach at Stanford on Jan. 20 against Washington State to become the fifth DI coach, women's or men's, with that many at a single school (Pat Summitt, Geno Auriemma, Mike Krzyzewski, Jim Boeheim).

**HOME COOKIN' »**

- Stanford is in the midst of an 20-game winning streak in Maples Pavilion, the seventh-longest active stretch in the country and the program's longest since it went 28 straight from Jan. 18, 2013 until an 87-81 overtime loss to No. 10 Texas on Nov. 20, 2014.
- Last season, the Cardinal was the only Pac-12 team undefeated at home in conference (9-0).
- Stanford has won 16 consecutive Pac-12 home games.
- Stanford's last home loss was to No. 7 Tennessee on Dec. 21, 2017 (83-71) and its last conference loss at home was to No. 15 UCLA on Feb. 6, 2017 (85-76).
- The Cardinal has won 23 in a row at home over unranked Pac-12 teams. Its last such loss was Feb. 22, 2015, when it was beaten by Cal, 63-53.

**INJURY BUG »**

- A number of players have missed significant stretches of time for Stanford.
- Junior Nadia Fingall, who had started each of the Cardinal's first 12 games and averaged 8.0 points and 4.9 rebounds, will miss the remainder of the season after tearing the ACL in her left knee in a game against USC on Jan. 4
- Senior Marta Sniezek has yet to play this year after undergoing offseason ulnar collateral ligament (UCL) surgery on her right hand/thumb. She started 32 games last season.
- Freshman Lexie Hull returned in Stanford's Jan. 6 win over UCLA after missing the previous nine games with a left foot injury. She had started the first three games of the year.

**2018-19 STANFORD ROSTER**

No.	Player	Pos.	Ht.	Yr.	Major	Hometown (High School)
2	Shannon Coffee	C	6-5	Sr.	Human Biology	Dayton, Ohio (Centerville)
3	Anna Wilson	G	5-9	Jr.	Art Practice	Seattle, Wash. (Bellevue)
4	Nadia Fingall	F	6-3	Jr.	Human Biology	Navarre, Fla. (Choctawhatchee)
10	Alyssa Jerome	F	6-3	So.	Undeclared	Toronto, Ontario, Canada (Harbord Collegiate)
11	Alanna Smith	F	6-4	Sr.	Psychology	Melbourne, Victoria, Australia (Wesley College)
12	Lexie Hull	F	6-0	Fr.	Undeclared	Spokane, Wash. (Central Valley)
13	Marta Sniezek	G	5-8	Sr.	American Studies	McLean, Va. (National Cathedral [D.C.]
14	Mikaela Brewer	G	5-10	Jr.	Human Biology	Barrie, Ontario, Canada (Innisdale Secondary)
15	Maya Dodson	F	6-3	So.	Undeclared	Alpharetta, Ga. (St. Francis)
20	Estella Moschkau	F	6-1	So.	Undeclared	Madison, Wis. (Edgewood)
21	DiJonai Carrington	G	5-11	Jr.	Psychology • African & African American Studies	San Diego, Calif. (Horizon Christian)
23	Kiana Williams	G	5-8	So.	Undeclared	San Antonio, Texas (Karen Wagner)
24	Lacie Hull	F	6-1	Fr.	Undeclared	Spokane, Wash. (Central Valley)
54	Jenna Brown	G	5-10	Fr.	Undeclared	Atlanta, Ga. (The Lovett School)

TEMPIE Brown (TEMP-ee)  
 DIJONAI Carrington (dijon-NAY)  
 Nadia FINGALL (FING-gull)

Estella MOSCHKAU (MOSS-cow)  
 ALANNA Smith (uh-LAN-uh)  
 Marta SНИЕZEK (SNEEZE-ick)  
 TARA VANDERVEER (TAR-uh van-DER-veer)

**STANFORD'S RECORD WHEN**

Category	H	R	N	O
Scoring First	5-0	6-1	1-0	12-1
Opponent Scores First	4-0	0-2	1-0	5-2
Lead at Half	7-0	5-0	2-0	14-0
Trail at Half	2-0	1-2	0-0	3-2
Tied at Half	0-0	0-1	0-0	0-1
Overtime	0-0	0-0	0-0	0-0
vs. Top 25	1-0	2-1	0-0	3-1
Decided by 1-4 Points	0-0	0-1	0-0	0-1
Decided by 5-9 Points	3-0	2-2	0-0	5-2
Decided by 10+ Points	6-0	4-0	2-0	12-0
Scoring 100+	1-0	0-0	0-0	1-0
Scoring 90-99	2-0	1-0	0-0	3-0
Scoring 80-89	2-0	2-1	1-0	5-1
Scoring 70-79	2-0	2-1	1-0	5-1
Scoring 60-69	2-0	1-1	0-0	3-1
Scoring 50-59	0-0	0-0	0-0	0-0
Scoring 40-49	0-0	0-0	0-0	0-0
Opp. Scoring 90-99	0-0	0-0	0-0	0-0
Opp. Scoring 80-89	1-0	1-1	0-0	2-1
Opp. Scoring 70-79	1-0	0-2	0-0	1-2
Opp. Scoring 60-69	4-0	2-0	1-0	7-0
Opp. Scoring 50-59	1-0	2-0	0-0	3-0
Opp. 49 or Fewer	2-0	1-0	1-0	4-0
50%-plus FG Pct.	3-0	3-0	1-0	7-0
40-49.9% FG Pct.	5-0	2-2	1-0	8-2
39.9%-minus FG Pct.	1-0	1-1	0-0	2-1
Opp. 50%-plus FG Pct.	0-0	0-1	0-0	0-1
Opp. 40-49.9% FG Pct.	2-0	2-2	0-0	4-2
Opp. 39.9%-minus	7-0	4-0	2-0	13-0
Better FG% than Opp.	9-0	6-1	2-0	17-1
FG% is Equal	0-0	0-0	0-0	0-0
Opp. Better FG%	0-0	0-2	0-0	0-2
80%-plus FT Pct.	3-0	3-0	0-0	6-0
70-79% FT Pct.	2-0	3-0	1-0	6-0
69%-minus FT Pct.	4-0	0-3	1-0	5-3
Better FT% than Opp.	7-0	4-0	0-0	11-0
FT% is Equal	0-0	0-0	0-0	0-0
Opp. Better FT%	2-0	2-3	2-0	6-3
Outrebounding Opp.	5-0	4-0	2-0	11-0
Rebounds are Equal	0-0	0-2	0-0	0-2
Outrebounded by Opp.	4-0	2-1	0-0	6-1
Fewer TO than Opp.	6-0	2-2	1-0	9-2
Turnovers are Equal	0-0	0-1	0-0	0-1
More TO than Opp.	3-0	4-0	1-0	8-0
6 in Double Figures	1-0	0-0	0-0	1-0
5 in Double Figures	0-0	1-0	0-0	1-0
4 in Double Figures	1-0	0-1	0-0	1-1
3 in Double Figures	7-0	3-1	2-0	12-1
2 in Double Figures	0-0	2-1	0-0	2-1
1 in Double Figures	0-0	0-0	0-0	0-0
Bench Scores More	2-0	5-1	1-0	8-1
Opp. Bench Scrs. More	4-0	1-1	1-0	6-1
Wearing Black	0-0	3-2	1-0	4-2
Wearing White	8-0	0-0	1-0	9-0
Wearing Cardinal	0-0	3-1	0-0	3-1

- Sophomore Maya Dodson, arguably one of the conference's most improved players, returned to the lineup at Cal on Thursday after missing the previous eight games with a left foot injury.

**MARKED OFFENSIVE IMPROVEMENT »**

- The Cardinal is 18th in the country in scoring offense (80.1) and 21st in scoring margin (+16.4).
- Stanford hasn't averaged more than 75.0 points per game since 2013-14 and has averaged 68.7 (2017-18), 68.8 (2015-16) and 69.3 (2014-15) in three of the last four years. Those are three of the five lowest scoring offenses for a Tara VanDerveer team at Stanford, behind 1985-86 (66.6) and 1986-87 (67.8).
- Stanford is 19th nationally in field goal percentage (.461) and 18th in assist-to-turnover ratio (1.28).
- Those categories are just a couple of many where the Cardinal has seen a marked improvement year-over-year. Last season, Stanford was 87th in field goal percentage (.424) and 126th in assist-to-turnover ratio (0.93).

**SHARP SHOOTERS OFF OF LATE »**

- Stanford is 15th in the country, averaging 9.5 3-point makes per game and 29th in 3-point percentage, making 36.7 percent.
- In its last three games, all on the road, Stanford has struggled to make 3-pointers and defend the 3-point line. Beginning with its Jan. 25 win in Colorado, the Cardinal has been outscored by 48 points from behind the arc (105-57).
- Stanford is 19-of-79 from deep (.241) the last three games while its opponents (Colorado, Utah, Cal) are a combined 35-of-82 (.427).
- Over the season's first 17 games, the Cardinal was making 39 percent of its 3-pointers (171-of-439) and an average of 10.1 per game.
- Stanford's 16 3-pointers on Nov. 11 against Idaho tied a program single-game record also achieved at UCLA on Feb. 24, 2002 and at Washington on Feb. 24, 2001.
- Entering the season, Stanford had made 14 3-pointers in a game 16 times in 1,389 games (1.2 percent). This year's Cardinal has already done it three times in 20 games against Idaho (16), San Francisco (15) and Tennessee (14).
- The Cardinal made 31.9 percent of its attempts from behind the arc last season, the second-worst percentage in program history. Stanford also was a program-low 42.4 percent from the floor overall in 2017-18.
- Stanford won that game against Idaho 115-71, its fifth-highest point total ever and most since tying a school record with 122 against Cal State Fullerton on Dec. 10, 1994.

**FROM DOWN UNDER »**

- Alanna Smith is on every major watch list, including the Naismith Trophy, Wade Trophy, John R. Wooden Award, Katrina McClain Award and Senior CLASS Award.
- A two-time Pac-12 Player of the Week this season (Dec. 17 and Jan. 14) and the espnW and USBWA National Player of the Week from Dec. 17, Smith is shooting 54.0 percent from the field (157-of-291), 46.2 percent from behind the arc (54-of-117) and averaging a team-high 21.2 points per game to go with 8.3 rebounds.
- She is one of two players in the nation shooting better than 46 percent both overall and from deep (Marta Gomez - Wyoming).
- Elena Delle Donne is the only player 6'4" and taller over the past two decades to shoot better than 40 percent from 3-point range when she made 41.3 percent as a freshman at Delaware in 2009-10 (NCAA minimum of two made 3-pointers per game).
- Smith, who has double-doubles in six of her last 11 games, is the only player in the country averaging 21.0 points, 8.0 rebounds, 2.0 assists and 2.0 blocks per game this season.
- Smith is averaging 23.5 points, 10.2 rebounds and 3.2 blocks in the last 11 games.
- Smith is fourth in the conference and 38th in the country in field goal percentage, second in the Pac-12 and 13th in the country in 3-point percentage, third in the league and 13th nationally in scoring and first in the conference and 18th in the country in blocks per game.
- She is 20th in school history in scoring (1,427) and fifth in blocks (196).
- Smith is within range of joining an elite company of players that have put together careers of 1,600 points, 150 made 3-pointers and 200 blocks. Since 1999-00, the only three to do that are Elena Delle Donne (3,039 points; 206 3-pointers; 273 blocks), Maya Moore (3,036 points; 311 3-pointers; 204 blocks) and Breanna Stewart (2,676 points; 152 3-pointers; 414 blocks).
- At her current pace, Smith would reach those numbers by the end of the regular season (nine games).
- She shoots 51.0 percent from deep at home (26-of-51) and 42.4 percent (28-of-66) away from Maples (road and neutral).
- The senior had 30 points, 13 rebounds five assists and three blocks in a 62-55 win at Buffalo on Dec. 21 to become just the fourth player since 2000 to put together a line of 30/13/5/3 in a true road game.
- Jennie Simms had 41/13/6/3 for Old Dominion against Florida Atlantic on Feb. 4, 2017, Jerica Coley had 30/14/5/4 for FIU against South Florida on March 17, 2012 and Jessica Davenport had 34/16/6/3 for Ohio State against Iowa on Jan. 12, 2006.

**VANDERVEER'S HEAD COACHING CAREER**

Year	School	Overall	Post.
1978-79	Idaho	17-8	
1979-80	Idaho	25-6	AIAW Championships
1980-81	Ohio State	17-15	---
1981-82	Ohio State	20-7	NCAA First Round
1982-83	Ohio State	23-5	---
1983-84	Ohio State	22-7	NCAA First Round
1984-85	Ohio State	28-3	NCAA Elite 8
1985-86	Stanford	13-15	---
1986-87	Stanford	14-14	---
1987-88	Stanford	27-5	NCAA Sweet 16
1988-89	Stanford	28-3	NCAA Elite 8
1989-90	Stanford	32-1	NCAA Champions
1990-91	Stanford	26-6	NCAA Final Four
1991-92	Stanford	30-3	NCAA Champions
1992-93	Stanford	26-6	NCAA Sweet 16
1993-94	Stanford	25-6	NCAA Elite 8
1994-95	Stanford	30-3	NCAA Final Four
1995-96	Stanford	---	USA Head Coach
1996-97	Stanford	34-2	NCAA Final Four
1997-98	Stanford	21-6	NCAA First Round
1998-99	Stanford	18-12	NCAA First Round
1999-00	Stanford	21-9	NCAA Second Round
2000-01	Stanford	19-11	NCAA Second Round
2001-02	Stanford	32-3	NCAA Sweet 16
2002-03	Stanford	27-5	NCAA Second Round
2003-04	Stanford	27-7	NCAA Elite 8
2004-05	Stanford	32-3	NCAA Elite 8
2005-06	Stanford	26-8	NCAA Elite 8
2006-07	Stanford	29-5	NCAA Second Round
2007-08	Stanford	35-4	NCAA Runner-Up
2008-09	Stanford	33-5	NCAA Final Four
2009-10	Stanford	36-2	NCAA Runner-Up
2010-11	Stanford	33-3	NCAA Final Four
2011-12	Stanford	35-2	NCAA Final Four
2012-13	Stanford	33-3	NCAA Sweet 16
2013-14	Stanford	33-4	NCAA Final Four
2014-15	Stanford	26-10	NCAA Sweet 16
2015-16	Stanford	27-8	NCAA Elite 8
2016-17	Stanford	32-6	NCAA Final Four
2017-18	Stanford	24-11	NCAA Sweet 16
2018-19	Stanford	17-3	

**1,053-245****COACHING HIGHLIGHTS**

- The second-winningest coach in women's college basketball history and was the second to reach 1,000 career wins (Feb. 3, 2017 vs. USC).
- Possesses the sixth-highest career winning percentage (.812) among Division I women's basketball coaches all-time.

**HONORS AND AWARDS**

- Naismith Memorial Basketball Hall of Fame ('11)
- Women's Basketball Hall of Fame ('02)
- Two NCAA Championships (1990, 1992)
- Head of the 1996 U.S. Olympic Team (Gold)
- 60-0 record with USA Olympic Team in 1995-96
- 88-8 record (.917) as USA Basketball Head Coach
- 12 NCAA Final Fours
- 22 regular-season Pac-12 titles
- Four-time National Coach of the Year
- 15-time Pac-12 Coach of the Year
- Two-time Big Ten Coach of the Year

**WATCH WILLIAMS »**

- Kiana Williams is also on watch lists for the Naismith Trophy and Ann Meyers Drysdale Award.
- The sophomore is second on the team in scoring (14.4 points per game) and four of her five 20-point games this season have come in conference.
- Williams had her first career double-double with 21 points and 10 assists in the Jan. 6 win against UCLA. It was Stanford's first 20-point, 10-assist double-double since Jeanette Pohlen had 21 and 12 in a win over USC on Jan. 22, 2011.
- It was also the Cardinal's first individual 10-assist effort since Marta Sniezek had that many in the 2016-17 season opener against Cal Poly on Nov. 11, 2016.
- Williams is also averaging 5.0 assists per game, which is seventh in the conference. No Stanford player has averaged 4.5 assists in a season since Jeanette Pohlen in 2010-11 (4.8) and no one has averaged 5.0 since Nicole Powell in 2001-02 (6.3).

**CARRINGTON CLUTCH »**

- DiJonai Carrington has pulled down 10 or more rebounds in seven of the last 12 games and is averaging 16.1 points and 9.6 rebounds in those 12 with five double-doubles.
- The junior has a pair of 30-point efforts against Tennessee (33) and UCLA (30) and Stanford is the only school in the nation that has multiple players with multiple 30-point games this season. Alanna Smith scored 30 at Hawaii on Nov. 25, 30 at Buffalo on Dec. 21 and 34 against Washington State on Jan. 20.

**RECORDS SET ON ROCKY TOP »**

- On the 30th anniversary of the first meeting in their storied rivalry, Stanford went on the road and beat then-No. 9 Tennessee in Knoxville, 95-85, on Dec. 18.
- In the first top-10 matchup between the schools since 2013, the Cardinal collected its third win against the Lady Vols in Thompson-Boling Arena. Its previous road victories in Knoxville came on Dec. 22, 2012 (73-60) and Dec. 15, 1996 (82-65).
- Stanford shot 14-of-24 (.583) from 3-point range, an opponent record for Thompson-Boling Arena and a record-tying number of makes from deep against the Lady Vols all-time.
- The Cardinal's 95 points were the most against Tennessee in Knoxville in 13 seasons and just two shy of the opponent record in Thompson-Boling Arena. Texas beat the Lady Vols 97-78 on Dec. 9, 1987.
- Stanford shot 55 percent overall (33-of-60) to score its 95 points, a program record for scoring on the road against a top-10 team.
- DiJonai Carrington led five Cardinal in double figures with a career-high 33 points and 13-rebounds for her third career double-double. Carrington was 11-of-15 (.733) from the floor and 4-of-5 (.800) from deep and became just the second player in the last 20 years to have 33 points, 13 rebounds and four made 3-pointers against a ranked opponent. Missouri's Evan Unrau had 40/15/4 against No. 8 Kansas State on Feb. 22, 2014, a game that went into double-overtime.

**RESUME BUILDERS »**

- Coupled with a Dec. 15 68-63 home victory over then-No. 3 Baylor, Stanford beat a pair of top-10 teams in the span of four days, something it last did eight years ago when it beat No. 4 Xavier, 89-52, on Dec. 28, 2010 and No. 1 UConn, 71-59, on Dec. 30, 2010 to end the Huskies' then-record 90-game winning streak. Both of those victories were at home.
- Stanford, Notre Dame and Michigan State are the only schools in the nation with a pair of top-10 wins.

**VANDERVEER'S CAREER MILESTONES**

<b>Win #1</b>	Dec. 1, 1978 Idaho vs. Northern Montana, 70-68	<b>Win #1 at Stanford</b>	Nov. 22, 1985 vs. Hawaii, 68-65
<b>Win #100</b>	Feb. 27, 1983 Ohio State vs. Michigan, 74-60	<b>Win #100 at Stanford</b>	Jan. 27, 1990 vs. Arizona State, 90-63
<b>Win #200</b>	Feb. 12, 1988 Stanford vs. Washington, 70-66	<b>Win #200 at Stanford</b>	Dec. 18, 1993 vs. SW Missouri St., 74-63
<b>Win #300</b>	Dec. 20, 1991 Stanford vs. Southern Illinois, 82-63	<b>Win #300 at Stanford</b>	Feb. 14, 1998 vs. USC, 91-63
<b>Win #400</b>	March 16, 1995 Stanford vs. UC Irvine (NCAA), 88-55	<b>Win #400 at Stanford</b>	Nov. 30, 2002 vs. Kansas State, 63-57
<b>Win #500</b>	Nov. 26, 2000 Stanford vs. Pacific, 73-65	<b>Win #500 at Stanford</b>	Feb. 11, 2006 at California, 55-46
<b>Win #600</b>	March 20, 2004 Stanford vs. Missouri, 68-44	<b>Win #600 at Stanford</b>	March 14, 2009 vs. UCLA, 73-47 (at Los Angeles, Calif.)
<b>Win #700</b>	Dec. 28, 2007 Stanford vs. Washington State, 105-47	<b>Win #700 at Stanford</b>	Feb. 25, 2012 vs. Utah, 69-42
<b>Win #800</b>	Dec. 22, 2010 Stanford at San Francisco, 100-45	<b>Win #800 at Stanford</b>	March 21, 2015 vs. CSUN, 73-60
<b>Win #900</b>	Nov. 27, 2013 Stanford vs. FGCU, 83-59 (Puerto Vallarta, Mexico)	<b>Win #900 at Stanford</b>	January 20, 2019 vs. Washington State, 85-64
<b>Win #1,000</b>	Feb. 3, 2017 Stanford vs. USC, 58-42		

**IN THE POLLS**

**ASSOCIATED PRESS TOP 25**  
(Released January 28)

School	Record	Points
1 Baylor (24)	17-1	695
2 Connecticut (2)	18-1	670
3 Louisville (2)	19-1	630
4 Oregon	19-1	606
5 Notre Dame	19-2	604
6 Mississippi State	19-1	565
7 North Carolina State	20-0	541
<b>8 Stanford</b>	<b>17-2</b>	<b>488</b>
9 Oregon State	17-3	460
10 Marquette	18-3	452
11 Maryland	18-2	427
12 Texas	17-3	374
13 Iowa	16-4	338
14 Utah	18-1	282
15 Gonzaga	19-2	269
16 South Carolina	13-5	265
17 Rutgers	16-4	256
18 Syracuse	16-4	253
19 Kentucky	17-4	222
20 Texas A&M	16-4	142
21 Arizona State	14-6	127
22 Michigan State	15-5	109
23 Iowa State	15-5	106
24 Florida State	17-3	73
25 BYU	17-3	47

**OTHERS RECEIVING VOTES:** Miami (FL) 34; Drake 30; South Dakota 10; DePaul 7; Missouri 7; New Mexico 4; California 2; Clemson 2; UCF 1; Minnesota 1; Rice 1.

**USA TODAY COACHES TOP 25**  
(Released January 29)

School	Record	Points
1 Baylor (19)	17-1	779
2 Connecticut (11)	18-1	774
3 Louisville	19-1	721
4 Oregon (1)	19-1	692
5 Notre Dame (1)	19-2	685
6 Mississippi State	19-1	652
7 North Carolina State	20-0	619
<b>8 Stanford</b>	<b>17-2</b>	<b>546</b>
9 Marquette	18-3	542
10 Maryland	18-2	512
11 Oregon State	17-3	493
12 Iowa	16-4	422
13 Gonzaga	19-2	350
14 Texas	17-4	326
15 Kentucky	17-4	297
16 Syracuse	16-4	285
17 Utah	18-1	255
18 South Carolina	14-5	254
19 Rutgers	16-4	219
20 Arizona State	14-6	202
21 Florida State	17-3	174
22 Michigan State	15-5	165
23 Miami (FL)	18-4	130
24 Texas A&M	16-4	105
25 Iowa State	15-5	98

**OTHERS RECEIVING VOTES:** Drake 35; South Dakota 13; New Mexico 13; California 12; DePaul 10; UCF 5; Missouri 4; Troy 4; BYU 4; Arkansas 2; West Virginia 1.

- The win against the Lady Bears was the Cardinal's first in the regular season against a top-five team since it ended No. 1 UConn's 47-game winning streak in overtime, 88-86, on Nov. 17, 2014.
- Stanford is now 9-1 in its last 10 home game against top-five opponents.
- The 6-foot-5 Shannon Coffee set season highs with nine points and 19 minutes and made three of her four 3-point attempts against Baylor. The senior has made 12 from deep in her career and seven have come against Baylor. She was 4-of-8 last season in an 81-57 loss in Waco.
- Coupled with Alanna Smith's 5-of-9 effort from behind the arc, the Cardinal's two tallest players were a combined 8-of-13 (.615) from distance.
- Baylor, which entered the game leading the nation in field goal percentage (.557), shot just 34.9 percent (22-of-63) against the Cardinal, its lowest since losing 88-69 to Notre Dame in the Elite Eight on March 31, 2014 (.338).
- Kalani Brown (16.4 ppg) and Lauren Cox (12.3 ppg), who came in averaging nearly 30 combined points per game, together went for just seven points on just 3-of-11 shooting (.273). Brown came into the day leading the NCAA's active players in field goal percentage (.648) made only two of her seven attempts from the floor, the third-lowest percentage of her career when attempting at least five shots.

**FOUR TO THE FARM »**

- Stanford bolstered an already strong recruiting class for next season with the addition of the nation's consensus No. 1 recruit, Haley Jones (Santa Cruz, Calif./Archbishop Mitty), who committed on Nov. 28.
- Jones joined the earlier signings of top-50, five-star talents Fran Belibi (Aurora, Colo./Regis Jesuit), Hannah Jump (Los Altos Hills, Calif./Pinewood School) and Ashten Prechtel (Colorado Springs, Colo./Discovery Canyon) in Stanford's class, which is ranked second nationally by espnW HoopGurlz.
- Jones is the first No. 1 prospect to sign with Stanford since Chiney Ogwumike came to The Farm as the top player in the country in Nov. 2009.
- Belibi, Jones and Prechtel are on the West Team for the 2019 McDonald's All American Game on March 27. Of Stanford's 24 McDonald's All-Americans all-time, nine will be on the team together next season.

**STANFORD BY THE NUMBERS**

DOUBLE-DOUBLES	2018-19	CAREER	LED IN REBOUNDING (+TIES)	2018-19	CAREER
Alanna Smith	6	16	Alanna Smith	12	29
DiJonai Carrington	5	7	DiJonai Carrington	6	14
Lexie Hull	1	1	Nadia Fingall	2	7
Kiana Williams	1	1	Marta Sniezek	0	4
			Lexie Hull	1	1
			Kiana Williams	0	1
DOUBLE-FIGURE POINTS	2018-19	CAREER	LED IN ASSISTS (+TIES)	2018-19	CAREER
Alanna Smith	19	64	Marta Sniezek	0	61
Kiana Williams	15	34	Kiana Williams	15	21
DiJonai Carrington	15	28	DiJonai Carrington	3	8
Nadia Fingall	4	15	Nadia Fingall	1	3
Marta Sniezek	0	9	Jenna Brown	1	1
Anna Wilson	1	4	Maya Dodson	1	1
Shannon Coffee	0	2	Lacie Hull	1	1
Maya Dodson	5	7	Alyssa Jerome	0	1
Lexie Hull	3	3	Alanna Smith	1	2
Lacie Hull	2	2	Anna Wilson	1	2
20-PLUS POINTS GAMES	2018-19	CAREER	<b>STANFORD SUPERLATIVES</b>		
Alanna Smith	10	19	Points .....	34, A. Smith vs. Washington State	
Kiana Williams	5	8	Field Goals Made .....	13, A. Smith vs. Washington State	
DiJonai Carrington	3	5	Field Goal Att. ....	22, A. Smith at Cal	
Nadia Fingall	1	1		22, A. Smith at Buffalo	
Anna Wilson	0	1	3-Point FG Made .....	5, A. Smith vs. Baylor	
DOUBLE-FIGURE REBOUNDS	2018-19	CAREER		5, K. Williams vs. FGCU	
Alanna Smith	7	19		5, A. Smith vs. San Francisco	
DiJonai Carrington	6	8		5, Lexie Hull vs. Idaho	
Lexie Hull	1	1	3-Point FG Att.....	11, K. Williams vs. USC	
Marta Sniezek	0	1	Free Throws Made .....	12, D. Carrington vs. FGCU	
DOUBLE-FIGURE ASSISTS	2018-19	CAREER		Free Throw Att. ....	15, D. Carrington vs. FGCU
Marta Sniezek	0	2	Rebounds.....	15 A. Smith vs. Washington State	
Kiana Williams	1	1	Assists .....	10, K. Williams vs. UCLA	
LED TEAM IN SCORING (+TIES)	2018-19	CAREER		Steals .....	7, Lacie Hull vs. American
Alanna Smith	12	32	Blocked Shots.....	7, A. Smith at Arizona	
Kiana Williams	4	12			
DiJonai Carrington	2	7			
Shannon Coffee	0	2			
Maya Dodson	1	1			
Nadia Fingall	1	1			

**THE LAST TIME STANFORD****BEAT A NO. 1 TEAM:**

11/17/14 vs. No. 1 Connecticut (88-86 [OT])

**BEAT A TOP 25 TEAM:**

1/11/19 at No. 19 Arizona State (72-65)

**BEAT A TOP 5 TEAM:**

12/15/18 vs. No. 3 Baylor (68-63)

**BEAT A TOP 25 TEAM ON THE ROAD:**

1/11/19 at No. 19 Arizona State (72-65)

**SCORED 100+ POINTS:**

11/11/18 vs. Idaho (115)

**ALLOWED 100+ POINTS:**

12/27/00 at Oklahoma (102)

**SCORED FEWER THAN 50 POINTS:**

3/5/17 vs. Oregon State (48)

**ALLOWED FEWER THAN 50 POINTS:**

1/13/19 at Arizona (48)

**SCORED FEWER THAN 40 POINTS:**

1/24/16 at UCLA (36)

**ALLOWED FEWER THAN 40 POINTS:**

12/16/17 vs. UNLV (33)

**SHOT 60+ PERCENT:**

11/25/16 vs. Wichita State (.623)

**OPPONENT SHOT 59+ PERCENT:**

12/16/10 at DePaul (.596)

**SHOT LESS THAN 30 PERCENT:**

12/3/17 at Baylor (.294)

**OPPONENT SHOT LESS THAN 30 PERCENT:**

1/13/19 at Arizona (.274)

**FIVE CARDINAL IN DOUBLE-FIGURES:**

12/18/18 at Tennessee

(D. Carrington 33, A. Smith 16, K. Williams 16,

Lacie Hull 14, M. Dodson 10)

**TWO PLAYERS WITH 20+ POINTS:**

1/31/19 at Cal

(DiJonai Carrington 23, Alanna Smith 21)

**THREE PLAYERS WITH 20+ POINTS:**

1/6/19 vs. UCLA

(D. Carrington 30, A. Smith 24, K. Williams 21)

**PLAYER SCORED 40+ POINTS:**

12/20/11, Nnemkadi Ogumike vs. Tennessee (42)

**PLAYER SCORED 30+ POINTS:**

1/20/19, Alanna Smith vs. Washington State (34)

**PLAYER MADE 10+ FIELD GOALS:**

1/20/19, Alanna Smith vs. Washington State (13)

**PLAYER MADE 5+ 3-POINTERS:**

12/15/18, Alanna Smith vs. Baylor (5)

**PLAYER MADE 10+ FREE THROWS:**

11/23/18, DiJonai Carrington vs. FGCU (12)

**PLAYER HAD 10+ ASSISTS:**

1/6/19, Kiana Williams vs. UCLA (10)

**PLAYER HAD 15+ REBOUNDS:**

1/20/19, Alanna Smith vs. Washington State (15)

**PLAYER HAD 5+ BLOCKED SHOTS:**

1/25/19, Alanna Smith at Colorado (5)

**PLAYER HAD 5+ STEALS:**

11/24/18, Lacie Hull vs. American (7)

**PLAYER HAD A DOUBLE-DOUBLE:**

1/31/19, DiJonai Carrington at Cal (23 pts, 12 reb)

**TWO PLAYERS HAD A DOUBLE-DOUBLE:**

1/18/19, Alanna Smith (27 pts, 13 reb) and

DiJonai Carrington (12 pts, 11 reb) vs. Washington

**PLAYER HAD A TRIPLE-DOUBLE:**

3/18/02, N. Powell vs. Tulane (16 pts, 10 reb, 10 ast)

**STANFORD HIGHS/LOWS**

Most Points .....	115 vs. Idaho (11/11/18)
Fewest Points .....	62 at Buffalo (12/21/18)
Most 1st Quarter Points.....	29 vs. Washington State (1/20/19)
Fewest 1st Quarter Points.....	12 at Utah (1/27/19)
Most 2nd Quarter Points .....	28 vs. Idaho (11/11/18)
Fewest 2nd Quarter Points .....	11 at Buffalo (12/21/18)
Most 3rd Quarter Points .....	40 vs. Idaho (11/11/18)
Fewest 3rd Quarter Points .....	9 at Gonzaga (12/2/18)
Most 4th Quarter Points .....	32 at Gonzaga (12/2/18)
Fewest 4th Quarter Points .....	10, two times [last vs. Washington State (1/20/19)]
Best FG Pct.....	56.6% (30-of-53) at Hawaii (11/25/18)
Worst FG Pct.....	38.3% (23-of-60) vs. Baylor (12/15/18)
Most 3-Pt. FGs Made.....	16 vs. Idaho (11/11/18)
Fewest 3-Pt. FGs Made .....	5, three times [last at Cal (1/31/19)]
Most 3-Pt. FGs Attempted .....	41 vs. Idaho (11/11/18)
Fewest 3-Pt. FGs Attempted.....	20 at Buffalo (12/21/18)
Best 3-Pt. FG Pct. (min. five attempts).....	58.3% (14-of-24) at Tennessee (12/18/18)
Worst 3-Pt. FG Pct.....	21.4% (6-of-28) at Colorado (1/25/19)
Most Free Throws Made .....	18 at Colorado (1/25/19)
Fewest Free Throws Made.....	4, two times [last vs. Washington (1/18/19)]
Most Free Throws Attempted.....	26 vs. FGCU (11/23/18)
Fewest Free Throws Attempted .....	5 vs. Washington (1/18/19)
Best Free Throw Pct. (min. five attempts) .....	100.0% (14-of-14) at Arizona State (1/11/19)
Worst Free Throw Pct. ....	42.9% (9-of-21) vs. Baylor (12/15/18)
Most Rebounds.....	53 vs. CSUN (12/29/18)
Fewest Rebounds .....	24 at Gonzaga (12/2/18)
Best Rebound Margin.....	+29 vs. Idaho (11/11/18)
Worst Rebound Margin.....	-14 at Gonzaga (12/2/18)
Most Assists .....	26 vs. Idaho (11/11/18)
Fewest Assists.....	10 vs. UC Davis (11/7/18)
Most Turnovers.....	21 vs. UC Davis (11/7/18)
Fewest Turnovers .....	6, two times [last at Cal (1/31/19)]
Best Turnover Margin.....	+9, two times [last at Colorado (1/25/19)]
Worst Turnover Margin.....	-12 at Tennessee (12/18/18)
Most Blocked Shots .....	11 vs. San Francisco (11/15/18)
Fewest Blocked Shots .....	0 at Cal (1/31/19)
Most Steals.....	13 at Hawaii (11/25/18)
Fewest Steals .....	3, three times [last at Utah (1/27/19)]

**OPPONENT HIGHS/LOWS**

Most Points .....	85 by Tennessee (12/18/18)
Fewest Points .....	43, two times [last by CSUN (12/29/18)]
Most 1st Quarter Points.....	24 by UCLA (1/6/19)
Fewest 1st Quarter Points.....	4 by CSUN (12/29/18)
Most 2nd Quarter Points .....	22 by FGCU (11/23/18)
Fewest 2nd Quarter Points .....	4 by Arizona (1/13/19)
Most 3rd Quarter Points .....	25, two times [last by Arizona State (1/11/19)]
Fewest 3rd Quarter Points .....	10 vs. UC Davis (11/7/18)
Most 4th Quarter Points .....	23, two times [last by UCLA (1/6/19)]
Fewest 4th Quarter Points .....	9 vs. UC Davis (11/7/18)
Best FG Pct.....	54.2% (26-of-48) by Gonzaga (12/2/18)
Worst FG Pct.....	22.6% (14-of-62) by UC Davis (11/7/18)
Most 3-Pt. FGs Made.....	15 by Idaho (11/11/18)
Fewest 3-Pt. FGs Made .....	3, two times [last by Baylor (12/15/18)]
Most 3-Pt. FGs Attempted .....	38 by FGCU (11/23/18)
Fewest 3-Pt. FGs Attempted.....	7 by Baylor (12/15/18)
Most FTs Made .....	19 by Gonzaga (12/2/18)
Fewest FTs Made .....	2 by Hawaii (11/25/18)
Most FTs Attempted.....	23, two times [last by Tennessee (12/18/18)]
Fewest FTs Attempted .....	2 by Hawaii (11/25/18)
Most Rebounds .....	44, two times [last by Colorado (1/25/19)]
Fewest Rebounds .....	20, two times [last by FGCU (11/23/18)]
Most Assists .....	17 by Hawaii (11/25/18)
Fewest Assists.....	6, two times [last by Arizona (1/13/19)]
Most Turnovers.....	23 by Gonzaga (12/2/18)
Fewest Turnovers .....	8 by Tennessee (12/18/18)
Best Turnover Margin.....	+12 by Tennessee (12/18/18)
Worst Turnover Margin.....	-9, two times [last by Colorado (1/25/19)]
Most Blocked Shots.....	6, two times [last by Colorado (1/25/19)]
Fewest Blocked Shots .....	0, four times [last by Buffalo (12/21/18)]
Most Steals.....	13 by UC Davis (11/7/18)
Fewest Steals .....	2 by Cal (1/31/19)

## STANFORD RECORDS

## CAREER SCORING

No.	Player	PTS
1.	Chiney Ogwumike (2011-14)	2,737
2.	Candice Wiggins (2005-08)	2,629
3.	Nnemkadi Ogwumike (2009-12)	2,491
4.	Kate Starbird (1994-97)	2,215
5.	Jayne Appel (2007-10)	2,125
6.	Val Whiting (1990-93)	2,077
7.	Nicole Powell (2001-04)	2,062
8.	Jeanne Ruark Hoff (1979-83)	2,038
9.	Kayla Pedersen (2008-11)	1,941
10.	Trisha Stevens (1988-91)	1,649
11.	Jennifer Azzi (1987-90)	1,634
12.	Katy Steding (1987-90)	1,586
13.	Olympia Scott (1995-98)	1,524
14.	Brooke Smith (2005-07)	1,520
15.	Anita Kaplan (1992-95)	1,509
16.	Lindsey Yamasaki (1999-2002)	1,497
17.	Jeanette Pohlen (2008-11)	1,453
18.	Virginia Sourlis (1983-86)	1,449
19.	Sonja Henning (1988-91)	1,445
20.	<b>ALANNA SMITH (2016-19)</b>	<b>1,427</b>
21.	Amber Orrange (2012-15)	1,426
22.	Louise Smith (1979-82)	1,414
23.	Christy Hedgpeth (1991-94)	1,387
24.	Erica McCall (2014-17)	1,376
25.	Kelley Suminski (2002-05)	1,364
26.	Meg Metzger (1980-83)	1,360
27.	Rachel Hemmer (1992-95)	1,289
28.	Vanessa Nygaard (1994-98)	1,279
29.	Julie Zeilstra (1989-91)	1,259
30.	Brittany McPhee (2015-18)	1,250
	Lili Thompson (2014-16)	1,250
32.	Maggie Nelson (1975-78)	1,180
33.	Karlie Samuelson (2014-17)	1,164
34.	Kami Anderson (1985-88)	1,141
35.	Jill Yanke (1986-89)	1,134
36.	Jillian Harmon (2006-09)	1,096
37.	Joslyn Tinkle (2010-13)	1,091
38.	Molly Goodenbour (1990-93)	1,040
39.	Angie Paccione (1979-83)	1,013
40.	Bethany Donaphin (1999-02)	1,010

## CAREER BLOCKS

No.	Player	BLKS
1.	Jayne Appel (2007-10)	273
2.	Chiney Ogwumike (2011-14)	202
3.	Val Whiting (1990-93)	201
4.	Erica McCall (2014-17)	200
5.	<b>ALANNA SMITH (2016-19)</b>	<b>196</b>
6.	Kaylee Johnson (2015-18)	166
7.	Kristen Newlin (2004-07)	163
8.	Joslyn Tinkle (2010-13)	150
9.	Bethany Donaphin (1999-2002)	136
	Cori Enghusen (1999-2002)	136

## CAREER ASSISTS

No.	Player	ASTS
1.	Sonja Henning (1988-91)	757
2.	Jennifer Azzi (1987-90)	751
3.	Milena Flores (1997-2000)	644
4.	Jamila Wideman (1994-97)	585
5.	Nicole Powell (2001-04)	577
6.	Jeanette Pohlen (2008-11)	560
7.	Amber Orrange (2012-15)	552
8.	Virginia Sourlis (1983-86)	483
9.	Molly Goodenbour (1990-93)	441
10.	Kate Starbird (1994-97)	437
11.	Candice Wiggins (2005-08)	436
	<b>MARTA SNIEZEK (2016-19)</b>	<b>428</b>

## SINGLE-GAME STEALS

No.	Player	STLS
1.	Katy Steding at Northwestern (12/3/88)	10
2.	Milena Flores vs. Saint Mary's (12/27/99)	9
3.	Jennifer Azzi vs. North Carolina State (12/19/87)	8
4.	<b>LACIE HULL VS. AMERICAN (11/24/18)</b>	<b>7</b>
	Candice Wiggins vs. Old Dominion (11/24/07)	7
	Brooke Smith at Washington State (1/13/07)	7
	Jamila Wideman at Colorado (12/28/96)	7
	Katy Steding at UCLA (1/7/89)	7
	Jennifer Azzi at Fresno State (12/1/87)	7

## SINGLE-GAME BLOCKS

No.	Player	BLKS
1.	Kristen Newlin at Washington State (1/2/04)	8
2.	<b>ALANNA SMITH AT ARIZONA (11/13/19)</b>	<b>7</b>
	Erica McCall at Utah (2/21/16)	7
	Joslyn Tinkle at South Carolina (12/19/12)	7
	Joslyn Tinkle at UC Davis (11/30/12)	7

## TEAM SINGLE-GAME SCORING

No.	Opponent	PTS
1.	vs. Cal State Fullerton (12/10/94)	122
	vs. Long Beach State (12/8/93)	122
3.	vs. Wisconsin (11/25/88)	119
4.	vs. Arizona (2/23/91)	116
5.	<b>VS. IDAHO (11/11/18)</b>	<b>115</b>
6.	vs. Arkansas (3/24/90)	114
7.	vs. Arizona State (1/13/94)	113
	vs. California (2/1/91)	113
	at Arizona (2/24/90)	113
	vs. Ohio (11/25/89)	113

## TEAM SINGLE-GAME FIELD GOALS

No.	Opponent	FGM
1.	vs. Cal State Fullerton (12/10/94)	51
2.	at Arizona (2/24/90)	47
3.	vs. Long Beach State (12/8/93)	46
4.	<b>VS. IDAHO (11/11/18)</b>	<b>45</b>
	vs. California (2/18/94)	45
	vs. Arkansas (3/24/90)	45
	vs. California (3/2/90)	45
	vs. Oregon (2/25/89)	45
9.	vs. Arizona (3/11/11)	44
	vs. Providence (12/28/94)	44
	vs. Illinois State (3/18/89)	44
	vs. Wisconsin (11/25/88)	44

## TEAM SINGLE-GAME 3-POINTERS

No.	Opponent	3FGM
1.	<b>VS. IDAHO (11/11/18)</b>	<b>16</b>
	at UCLA (2/24/02)	16
	at Washington (2/24/01)	16
4.	<b>VS. SAN FRANCISCO (11/15/18)</b>	<b>15</b>
	at San Francisco (11/29/17)	15
	vs. Missouri State (11/27/15)	15
	at Arizona (1/17/14)	15
	vs. UCLA (1/20/05)	15
	vs. Washington State (1/31/04)	15
	vs. Arizona (1/10/04)	15

**2018-19 Results**

<b>RECORD:</b>	<b>OVERALL</b>	<b>HOME</b>	<b>AWAY</b>	<b>NEUTRAL</b>
ALL GAMES	17-3	9-0	6-3	2-0
CONFERENCE	7-2	4-0	3-2	0-0
NON-CONFERENCE	10-1	5-0	3-1	2-0

<b>DATE</b>	<b>TIME</b>	<b>OPPONENT</b>		<b>SCORE</b>	<b>ATTEND</b>	<b>HIGH POINTS</b>	<b>HIGH REBOUNDS</b>
11/7/18	7:00 p.m.	UC DAVIS	W	71-43	2471	(16) Smith, Alanna	(11) Hull, Lexie
11/11/18	2:00 p.m.	IDAHO	W	115-71	2582	(19) Williams, Kiana (19) Smith, Alanna	(9) Smith, Alanna
11/15/18	7:00 p.m.	SAN FRANCISCO	W	96-62	2077	(21) Williams, Kiana	(7) Smith, Alanna
11/23/18	4:30 p.m.	# vs. FGCU	W	88-65	1346	(24) Fingall, Nadia	(9) Carrington, DiJonai
11/24/18	12:00 p.m.	# vs. American	W	71-49	1268	(25) Smith, Alanna	(8) Smith, Alanna
11/25/18	2:30 p.m.	# at Hawaii	W	81-59	1383	(30) Smith, Alanna	(6) Fingall, Nadia
12/2/18	2:00 p.m.	at Gonzaga		73-79 L	6,000	(18) Williams, Kiana	(7) Smith, Alanna
12/15/18	12:00 p.m.	BAYLOR	W	68-63	3,440	(21) Smith, Alanna	(8) Smith, Alanna
12/18/18	6:00 p.m.	at Tennessee	W	95-85	8,051	(33) Carrington, DiJonai	(13) Carrington, DiJonai
12/21/18	12:00 p.m.	at Buffalo	W	62-55	3,412	(30) Smith, Alanna	(13) Smith, Alanna
12/29/18	2:00 p.m.	CSUN	W	69-43	2,520	(16) Dodson, Maya	(12) Carrington, DiJonai
1/4/19	8:00 p.m.	* USC	W	72-64	2,557	(22) Williams, Kiana	(11) Smith, Alanna
1/6/19	1:00 p.m.	* UCLA	W	86-80	3,231	(30) Carrington, DiJonai	(11) Smith, Alanna
1/11/19	7:00 p.m.	* at Arizona State	W	72-65	2,728	(25) Smith, Alanna	(11) Carrington, DiJonai
1/13/19	12:00 p.m.	* at Arizona	W	78-48	2,686	(20) Smith, Alanna	(14) Smith, Alanna
1/18/19	7:00 p.m.	* WASHINGTON	W	91-54	2,535	(27) Smith, Alanna	(13) Smith, Alanna
1/20/19	12:00 p.m.	* WASHINGTON STATE	W	85-64	2,908	(34) Smith, Alanna	(15) Smith, Alanna
1/25/19	7:00 p.m.	* at Colorado	W	80-69	2,373	(26) Smith, Alanna	(13) Carrington, DiJonai
1/27/19	12:00 p.m.	* at Utah		68-75 L	2,983	(19) Smith, Alanna	(9) Smith, Alanna
1/31/19	8:00 p.m.	* at California		80-81 L	3,117	(23) Carrington, DiJonai	(12) Carrington, DiJonai

\* = Pac-12

# = Rainbow Wahine Showdown; Honolulu, Hawaii

<b>ATTENDANCE</b>	<b>GAMES</b>	<b>TOTALS</b>	<b>AVG/GAME</b>
HOME	9	24321	2702
AWAY	9	32733	3637
NEUTRAL	2	2614	1307
TOTAL	20	59668	2983



## 2018-19 Game-by-Game Comparison

	Date	Score	W/L	---TOTAL---		--3-PTRS--		FT-FTA Pct		----REBOUNDS----				Pf	A	TO	Blk	Stl	Pts	Avg
				FG-FGA	Pct	3FG-FGA	Pct		Pct	Off	Def	Tot	Avg							
UC Davis	11/7	71-43	W	14-62	.226	8-31	.258	7-13	.538	6	19	25	25.0	17	6	18	3	13	43	43.0
<b>Stanford</b>				<b>26-61</b>	<b>.426</b>	<b>6-24</b>	<b>.250</b>	<b>13-18</b>	<b>.722</b>	<b>12</b>	<b>38</b>	<b>50</b>	<b>50.0</b>	<b>18</b>	<b>10</b>	<b>21</b>	<b>6</b>	<b>12</b>	<b>71</b>	<b>71.0</b>
Idaho	11/11	115-71	W	25-59	.424	15-24	.625	6-13	.462	2	18	20	22.5	20	14	16	2	4	71	57.0
<b>Stanford</b>				<b>45-84</b>	<b>.536</b>	<b>16-41</b>	<b>.390</b>	<b>9-13</b>	<b>.692</b>	<b>20</b>	<b>29</b>	<b>49</b>	<b>49.5</b>	<b>19</b>	<b>26</b>	<b>10</b>	<b>7</b>	<b>8</b>	<b>115</b>	<b>93.0</b>
San Francisco	11/15	96-62	W	20-60	.333	5-16	.313	17-23	.739	13	26	39	28.0	18	8	14	0	4	62	58.7
<b>Stanford</b>				<b>36-70</b>	<b>.514</b>	<b>15-32</b>	<b>.469</b>	<b>9-15</b>	<b>.600</b>	<b>9</b>	<b>25</b>	<b>34</b>	<b>44.3</b>	<b>19</b>	<b>24</b>	<b>9</b>	<b>11</b>	<b>4</b>	<b>96</b>	<b>94.0</b>
FGCU	11/23	88-65	W	23-63	.365	10-38	.263	9-11	.818	3	17	20	26.0	19	9	12	0	8	65	60.2
<b>Stanford</b>				<b>30-58</b>	<b>.517</b>	<b>11-22</b>	<b>.500</b>	<b>17-26</b>	<b>.654</b>	<b>12</b>	<b>35</b>	<b>47</b>	<b>45.0</b>	<b>14</b>	<b>22</b>	<b>16</b>	<b>1</b>	<b>7</b>	<b>88</b>	<b>92.5</b>
American	11/24	71-49	W	17-46	.370	3-12	.250	12-15	.800	4	21	25	25.8	19	10	16	1	3	49	58.0
<b>Stanford</b>				<b>26-62</b>	<b>.419</b>	<b>7-22</b>	<b>.318</b>	<b>12-17</b>	<b>.706</b>	<b>15</b>	<b>25</b>	<b>40</b>	<b>44.0</b>	<b>16</b>	<b>18</b>	<b>12</b>	<b>2</b>	<b>12</b>	<b>71</b>	<b>88.2</b>
Hawaii	11/25	81-59	W	22-54	.407	13-22	.591	2-2	1.000	6	16	22	25.2	19	17	19	1	6	59	58.2
<b>Stanford</b>				<b>30-53</b>	<b>.566</b>	<b>8-21</b>	<b>.381</b>	<b>13-17</b>	<b>.765</b>	<b>8</b>	<b>24</b>	<b>32</b>	<b>42.0</b>	<b>11</b>	<b>18</b>	<b>13</b>	<b>5</b>	<b>13</b>	<b>81</b>	<b>87.0</b>
Gonzaga	12/2	73-79	L	26-48	.542	8-13	.615	19-22	.864	10	28	38	27.0	16	14	23	3	9	79	61.1
<b>Stanford</b>				<b>25-57</b>	<b>.439</b>	<b>9-22</b>	<b>.409</b>	<b>14-24</b>	<b>.583</b>	<b>9</b>	<b>15</b>	<b>24</b>	<b>39.4</b>	<b>18</b>	<b>14</b>	<b>15</b>	<b>6</b>	<b>12</b>	<b>73</b>	<b>85.0</b>
Baylor	12/15	68-63	W	22-63	.349	3-7	.429	16-20	.800	12	31	43	29.0	18	13	15	6	4	63	61.4
<b>Stanford</b>				<b>23-60</b>	<b>.383</b>	<b>13-30</b>	<b>.433</b>	<b>9-21</b>	<b>.429</b>	<b>7</b>	<b>23</b>	<b>30</b>	<b>38.2</b>	<b>19</b>	<b>13</b>	<b>10</b>	<b>5</b>	<b>7</b>	<b>68</b>	<b>82.9</b>
Tennessee	12/18	95-85	W	30-75	.400	9-28	.321	16-23	.696	12	19	31	29.2	21	14	8	0	8	85	64.0
<b>Stanford</b>				<b>33-60</b>	<b>.550</b>	<b>14-24</b>	<b>.583</b>	<b>15-21</b>	<b>.714</b>	<b>9</b>	<b>36</b>	<b>45</b>	<b>39.0</b>	<b>15</b>	<b>19</b>	<b>20</b>	<b>3</b>	<b>3</b>	<b>95</b>	<b>84.2</b>
Buffalo	12/21	62-55	W	19-69	.275	6-29	.207	11-17	.647	18	26	44	30.7	15	12	14	0	12	55	63.1
<b>Stanford</b>				<b>23-59</b>	<b>.390</b>	<b>5-20</b>	<b>.250</b>	<b>11-15</b>	<b>.733</b>	<b>12</b>	<b>33</b>	<b>45</b>	<b>39.6</b>	<b>18</b>	<b>18</b>	<b>19</b>	<b>5</b>	<b>5</b>	<b>62</b>	<b>82.0</b>
CSUN	12/29	69-43	W	16-59	.271	5-21	.238	6-12	.500	12	23	35	31.1	9	11	15	4	6	43	61.3
<b>Stanford</b>				<b>30-73</b>	<b>.411</b>	<b>5-21</b>	<b>.238</b>	<b>4-6</b>	<b>.667</b>	<b>19</b>	<b>34</b>	<b>53</b>	<b>40.8</b>	<b>13</b>	<b>14</b>	<b>10</b>	<b>5</b>	<b>7</b>	<b>69</b>	<b>80.8</b>
USC	1/4	72-64	W	26-69	.377	5-24	.208	7-13	.538	13	27	40	31.8	18	10	13	5	8	64	61.5
<b>Stanford</b>				<b>27-67</b>	<b>.403</b>	<b>8-29</b>	<b>.276</b>	<b>10-14</b>	<b>.714</b>	<b>14</b>	<b>32</b>	<b>46</b>	<b>41.2</b>	<b>11</b>	<b>12</b>	<b>15</b>	<b>7</b>	<b>3</b>	<b>72</b>	<b>80.1</b>
UCLA	1/6	86-80	W	31-69	.449	11-24	.458	7-15	.467	16	22	38	32.3	21	10	13	3	6	80	62.9
<b>Stanford</b>				<b>30-63</b>	<b>.476</b>	<b>12-28</b>	<b>.429</b>	<b>14-17</b>	<b>.824</b>	<b>12</b>	<b>25</b>	<b>37</b>	<b>40.9</b>	<b>10</b>	<b>21</b>	<b>15</b>	<b>5</b>	<b>10</b>	<b>86</b>	<b>80.5</b>
Arizona State	1/11	72-65	W	29-74	.392	4-19	.211	3-7	.429	22	18	40	32.9	14	15	13	3	9	65	63.1
<b>Stanford</b>				<b>26-50</b>	<b>.520</b>	<b>6-15</b>	<b>.400</b>	<b>14-14</b>	<b>1.000</b>	<b>6</b>	<b>26</b>	<b>32</b>	<b>40.3</b>	<b>12</b>	<b>12</b>	<b>16</b>	<b>3</b>	<b>8</b>	<b>72</b>	<b>79.9</b>
Arizona	1/13	78-48	W	17-62	.274	5-21	.238	9-12	.750	10	22	32	32.8	14	6	11	3	4	48	62.1
<b>Stanford</b>				<b>28-63</b>	<b>.444</b>	<b>13-31</b>	<b>.419</b>	<b>9-10</b>	<b>.900</b>	<b>11</b>	<b>35</b>	<b>46</b>	<b>40.7</b>	<b>15</b>	<b>16</b>	<b>14</b>	<b>8</b>	<b>4</b>	<b>78</b>	<b>79.8</b>
Washington	1/18	91-54	W	19-55	.345	8-26	.308	8-12	.667	12	20	32	32.8	10	8	22	2	11	54	61.6
<b>Stanford</b>				<b>37-77</b>	<b>.481</b>	<b>13-36</b>	<b>.361</b>	<b>4-5</b>	<b>.800</b>	<b>20</b>	<b>25</b>	<b>45</b>	<b>40.9</b>	<b>9</b>	<b>18</b>	<b>13</b>	<b>3</b>	<b>12</b>	<b>91</b>	<b>80.5</b>
Washington St.	1/20	85-64	W	23-64	.359	6-23	.261	12-15	.800	13	25	38	33.1	13	13	14	3	3	64	61.7
<b>Stanford</b>				<b>32-64</b>	<b>.500</b>	<b>10-21</b>	<b>.476</b>	<b>11-13</b>	<b>.846</b>	<b>7</b>	<b>30</b>	<b>37</b>	<b>40.7</b>	<b>12</b>	<b>14</b>	<b>10</b>	<b>7</b>	<b>5</b>	<b>85</b>	<b>80.8</b>
Colorado	1/25	80-69	W	21-61	.344	12-28	.429	15-17	.882	16	28	44	33.7	21	10	15	6	4	69	62.1
<b>Stanford</b>				<b>28-69</b>	<b>.406</b>	<b>6-28</b>	<b>.214</b>	<b>18-22</b>	<b>.818</b>	<b>16</b>	<b>26</b>	<b>42</b>	<b>40.8</b>	<b>10</b>	<b>17</b>	<b>6</b>	<b>6</b>	<b>10</b>	<b>80</b>	<b>80.7</b>
Utah	1/27	68-75	L	24-55	.436	11-24	.458	16-21	.762	7	31	38	33.9	12	16	13	3	8	75	62.8
<b>Stanford</b>				<b>25-65</b>	<b>.385</b>	<b>8-28</b>	<b>.286</b>	<b>10-15</b>	<b>.667</b>	<b>12</b>	<b>26</b>	<b>38</b>	<b>40.6</b>	<b>15</b>	<b>17</b>	<b>13</b>	<b>7</b>	<b>3</b>	<b>68</b>	<b>80.1</b>
California	1/31	80-81	L	29-64	.453	12-30	.400	11-15	.733	14	24	38	34.1	19	16	12	4	2	81	63.7
<b>Stanford</b>				<b>30-65</b>	<b>.462</b>	<b>5-23</b>	<b>.217</b>	<b>15-22</b>	<b>.682</b>	<b>15</b>	<b>23</b>	<b>38</b>	<b>40.5</b>	<b>19</b>	<b>13</b>	<b>6</b>	<b>0</b>	<b>7</b>	<b>80</b>	<b>80.1</b>

**2018-19 Stanford Women's Basketball  
Stanford Combined Team Statistics (as of Jan 31, 2019)  
All games**

<b>RECORD:</b>	<b>OVERALL</b>	<b>HOME</b>	<b>AWAY</b>	<b>NEUTRAL</b>
ALL GAMES	17-3	9-0	6-3	2-0
CONFERENCE	7-2	4-0	3-2	0-0
NON-CONFERENCE	10-1	5-0	3-1	2-0

#	Player	gp-gs	min	Total		3-Point		F-Throw		Rebounds		pf	dq	a	to	blk	stl	pts	avg			
				fg-fga	fg%	3fg-fga	3fg%	ft-fga	ft%	off	def									tot	avg	
11	Smith, Alanna	20-20	565	28.3	157-291	.540	54-117	.462	55-73	.753	40	126	166	8.3	56	3	46	48	49	23	423	21.2
23	Williams, Kiana	20-20	666	33.3	108-243	.444	48-131	.366	24-32	.750	0	48	48	2.4	22	0	99	52	1	22	288	14.4
21	Carrington, DiJonai	20-20	554	27.7	92-202	.455	22-64	.344	66-92	.717	33	122	155	7.8	33	0	34	45	3	25	272	13.6
15	Dodson, Maya	12-1	257	21.4	47-85	.553	0-0	.000	13-26	.500	27	23	50	4.2	26	0	16	10	19	6	107	8.9
04	Fingall, Nadia	12-12	244	20.3	40-80	.500	5-17	.294	11-21	.524	28	31	59	4.9	23	0	20	16	5	5	96	8.0
12	Hull, Lexie	11-3	236	21.5	24-60	.400	10-28	.357	10-12	.833	24	32	56	5.1	22	0	8	11	4	11	68	6.2
24	Hull, Lacie	20-14	516	25.8	37-98	.378	22-60	.367	13-15	.867	12	35	47	2.4	33	0	42	18	7	33	109	5.5
10	Jerome, Alyssa	20-7	317	15.9	27-69	.391	8-24	.333	14-18	.778	16	46	62	3.1	33	0	15	14	7	2	76	3.8
03	Wilson, Anna	16-3	165	10.3	18-42	.429	7-28	.250	7-8	.875	6	17	23	1.4	13	0	14	9	0	14	50	3.1
54	Brown, Jenna	20-0	192	9.6	16-49	.327	2-12	.167	9-17	.529	3	22	25	1.3	10	0	21	19	1	2	43	2.2
14	Brewer, Mikaela	10-0	39	3.9	5-14	.357	2-6	.333	3-4	.750	4	2	6	0.6	3	0	1	2	2	2	15	1.5
02	Coffee, Shannon	20-0	157	7.9	11-28	.393	4-15	.267	3-4	.750	10	18	28	1.4	9	0	15	6	4	5	29	1.5
20	Moschkau, Estella	12-0	50	4.2	5-7	.714	4-6	.667	0-0	.000	1	5	6	0.5	6	0	3	6	0	2	14	1.2
22	Romano, Alexa	10-0	42	4.2	3-12	.250	2-10	.200	3-3	1.000	1	2	3	0.3	4	0	2	2	0	0	11	1.1
	Team										40	36	76				5					
	Total.....	20	4000		590-1280	.461	190-518	.367	231-325	.711	245	565	810	40.5	293	3	336	263	102	152	1601	80.1
	Opponents.....	20	4000		453-1231	.368	159-460	.346	209-298	.701	221	461	682	34.1	333	-	232	296	52	132	1274	63.7

TEAM STATISTICS	STAN	OPP	Date	Opponent	Score	Att.
SCORING	1601	1274	11/7/18	UC DAVIS	w 71-43	2471
Points per game	80.1	63.7	11/11/18	IDAHO	w 115-71	2582
Scoring margin	+16.4	-	11/15/18	SAN FRANCISCO	w 96-62	2077
FIELD GOALS-ATT	590-1280	453-1231	# 11/23/18	vs FGCU	w 88-65	1346
Field goal pct	.461	.368	# 11/24/18	vs American	w 71-49	1268
3 POINT FG-ATT	190-518	159-460	# 11/25/18	at Hawaii	w 81-59	1383
3-point FG pct	.367	.346	12/2/18	at Gonzaga	L 73-79	6000
3-pt FG made per game	9.5	8.0	12/15/18	BAYLOR	w 68-63	3440
FREE THROWS-ATT	231-325	209-298	12/18/18	at Tennessee	w 95-85	8051
Free throw pct	.711	.701	12/21/18	at Buffalo	w 62-55	3412
F-Throws made per game	11.6	10.5	12/29/18	CSUN	w 69-43	2520
REBOUNDS	810	682	* 1/4/19	USC	w 72-64	2557
Rebounds per game	40.5	34.1	* 1/6/19	UCLA	w 86-80	3231
Rebounding margin	+6.4	-	* 1/11/19	at Arizona State	w 72-65	2728
ASSISTS	336	232	* 1/13/19	at Arizona	w 78-48	2686
Assists per game	16.8	11.6	* 1/18/19	WASHINGTON	w 91-54	2535
TURNOVERS	263	296	* 1/20/19	WASHINGTON ST.	w 85-64	2908
Turnovers per game	13.2	14.8	* 1/25/19	at Colorado	w 80-69	2373
Turnover margin	+1.7	-	* 1/27/19	at Utah	L 68-75	2983
Assist/turnover ratio	1.3	0.8	* 1/31/19	at California	L 80-81	3117
STEALS	152	132				
Steals per game	7.6	6.6				
BLOCKS	102	52				
Blocks per game	5.1	2.6				
ATTENDANCE	24321	35347				
Home games-Avg/Game	9-2702	9-3637				
Neutral site-Avg/Game	-	2-1307				

Score by Periods	1st	2nd	3rd	4th	Totals
Stanford	390	373	437	401	1601
Opponents	287	293	336	358	1274

**2018-19 Stanford Women's Basketball  
Stanford Combined Team Statistics (as of Jan 31, 2019)  
Conference games only**

<b>RECORD:</b>	<b>OVERALL</b>	<b>HOME</b>	<b>AWAY</b>	<b>NEUTRAL</b>
ALL GAMES	7-2	4-0	3-2	0-0
CONFERENCE	7-2	4-0	3-2	0-0
NON-CONFERENCE	0-0	0-0	0-0	0-0

#	Player	gp-gs	min	avg	Total		3-Point		F-Throw		Rebounds				pf	dq	a	to	blk	stl	pts	avg
					fg-fga	fg%	3fg-fga	3fg%	ft-fta	ft%	off	def	tot	avg								
11	Smith, Alanna	9-9	303	33.7	82-163	.503	26-60	.433	25-30	.833	23	71	94	10.4	25	1	17	18	31	12	215	23.9
21	Carrington, DiJonai	9-9	286	31.8	52-116	.448	11-35	.314	36-48	.750	22	58	80	8.9	15	0	13	23	1	7	151	16.8
23	Williams, Kiana	9-9	312	34.7	56-120	.467	21-61	.344	12-14	.857	0	23	23	2.6	8	0	49	24	1	11	145	16.1
15	Dodson, Maya	1-1	18	18.0	3-4	.750	0-0	.000	2-4	.500	3	1	4	4.0	4	0	0	0	0	1	8	8.0
24	Hull, Lacie	9-9	253	28.1	18-51	.353	9-31	.290	9-11	.818	3	13	16	1.8	13	0	22	8	3	12	54	6.0
12	Hull, Lexie	8-0	159	19.9	12-33	.364	4-13	.308	8-10	.800	15	20	35	4.4	14	0	5	7	1	3	36	4.5
10	Jerome, Alyssa	9-7	174	19.3	16-37	.432	4-14	.286	3-3	1.000	8	20	28	3.1	18	0	8	5	4	0	39	4.3
03	Wilson, Anna	9-0	88	9.8	11-19	.579	3-10	.300	2-2	1.000	3	5	8	0.9	2	0	7	6	0	7	27	3.0
54	Brown, Jenna	9-0	69	7.7	7-19	.368	1-4	.250	4-4	1.000	1	3	4	0.4	3	0	5	11	1	2	19	2.1
04	Fingall, Nadia	1-1	18	18.0	1-2	.500	0-1	.000	0-0	.000	2	2	4	4.0	1	0	2	2	1	0	2	2.0
14	Brewer, Mikaela	4-0	18	4.5	2-7	.286	2-3	.667	1-2	.500	3	0	3	0.8	1	0	1	0	1	2	7	1.8
02	Coffee, Shannon	9-0	89	9.9	3-11	.273	0-6	.000	3-4	.750	7	9	16	1.8	6	0	10	2	2	5	9	1.0
20	Moschkau, Estella	4-0	13	3.3	0-1	.000	0-1	.000	0-0	.000	0	3	3	0.8	3	0	1	0	0	0	0	0.0
Team											23	20	43							2		
Total.....		9	1800		263-583	.451	81-239	.339	105-132	.795	113	248	361	40.1	113	1	140	108	46	62	712	79.1
Opponents.....		9	1800		219-573	.382	74-219	.338	88-127	.693	123	217	340	37.8	142	-	104	126	32	55	600	66.7

TEAM STATISTICS	STAN	OPP	Date	Opponent	Score	Att.
SCORING	712	600	* 1/4/19	USC	w 72-64	2557
Points per game	79.1	66.7	* 1/6/19	UCLA	w 86-80	3231
Scoring margin	+12.4	-	* 1/11/19	at Arizona State	w 72-65	2728
FIELD GOALS-ATT	263-583	219-573	* 1/13/19	at Arizona	w 78-48	2686
Field goal pct	.451	.382	* 1/18/19	WASHINGTON	w 91-54	2535
3 POINT FG-ATT	81-239	74-219	* 1/20/19	WASHINGTON ST.	w 85-64	2908
3-point FG pct	.339	.338	* 1/25/19	at Colorado	w 80-69	2373
3-pt FG made per game	9.0	8.2	* 1/27/19	at Utah	L 68-75	2983
FREE THROWS-ATT	105-132	88-127	* 1/31/19	at California	L 80-81	3117
Free throw pct	.795	.693				
F-Throws made per game	11.7	9.8	* = Pac-12			
REBOUNDS	361	340	# = Rainbow Wahine Showdown; Honolulu, O'ahu			
Rebounds per game	40.1	37.8				
Rebounding margin	+2.3	-				
ASSISTS	140	104				
Assists per game	15.6	11.6				
TURNOVERS	108	126				
Turnovers per game	12.0	14.0				
Turnover margin	+2.0	-				
Assist/turnover ratio	1.3	0.8				
STEALS	62	55				
Steals per game	6.9	6.1				
BLOCKS	46	32				
Blocks per game	5.1	3.6				
ATTENDANCE	11231	13887				
Home games-Avg/Game	4-2808	5-2777				
Neutral site-Avg/Game	-	0-0				

Score by Periods	1st	2nd	3rd	4th	Totals
Stanford	180	152	214	166	712
Opponents	147	128	150	175	600

**POINTS-REBOUNDS-ASSISTS**

OPPONENT	#2 SC	#3 AW	#4 NF	#10 AJ	#11 AS	#12 LH	#13 MS	#14 MB	#15 MD	#20 EM	#21 DC	#23 KW	#24 LH	#54 JB
UC Davis	0-1-1	0-5-1	2-4-0	6-8-0	16-2-1	11-11-0	DNP	0-0-0	10-6-1	0-0-0	0-2-1	14-1-3	2-3-0	4-3-2
Idaho	2-1-0	10-1-1	16-8-2	4-6-2	19-9-4	17-5-0	DNP	2-0-0	10-5-0	3-0-1	6-4-1	19-3-9	0-2-2	7-3-3
San Francisco	0-0-2	2-0-0	7-3-2	7-2-0	18-7-3	4-5-3	DNP	4-1-0	10-3-6	5-1-1	9-5-4	21-0-3	6-1-0	3-2-0
FGCU	0-1-0	8-4-3	24-8-5	2-3-1	6-6-2	DNP	DNP	DNP	6-4-1	3-0-0	16-9-3	17-6-2	3-4-4	0-0-1
American	3-1-0	0-1-2	10-5-2	3-3-0	25-8-4	DNP	DNP	DNP	4-3-1	0-0-0	13-7-1	9-0-7	0-3-0	4-3-1
Hawaii	2-1-0	2-4-0	7-6-1	4-2-1	30-4-3	DNP	DNP	0-0-0	7-1-0	0-0-0	12-4-4	9-4-3	8-3-6	0-0-0
Gonzaga	0-0-0	DNP	5-3-3	6-4-0	13-7-1	DNP	DNP	DNP	8-4-2	DNP	13-3-1	18-1-3	9-1-3	1-0-1
Baylor	9-2-0	1-0-0	2-3-1	0-2-0	21-8-2	DNP	DNP	DNP	9-5-1	DNP	10-6-2	13-1-5	3-2-0	0-1-2
Tennessee	0-2-1	DNP	3-6-1	0-2-0	16-3-3	DNP	DNP	DNP	10-9-2	DNP	33-13-2	16-5-7	14-3-1	3-1-2
Buffalo	0-0-0	DNP	12-7-1	0-0-1	30-13-5	DNP	DNP	0-0-0	9-1-1	0-0-0	4-10-0	7-2-7	0-5-2	0-1-1
CSUN	4-3-1	DNP	6-2-0	5-2-2	14-5-1	DNP	DNP	2-2-0	16-5-1	3-2-0	5-12-2	0-2-1	10-4-2	2-7-3
USC	6-4-0	0-0-0	2-4-2	0-2-1	19-11-2	DNP	DNP	DNP	DNP	DNP	14-7-0	22-4-4	7-8-0	2-0-3
UCLA	0-0-1	0-0-0	DNP	6-3-0	24-11-3	0-3-0	DNP	DNP	DNP	DNP	30-9-1	21-2-10	5-2-6	0-0-0
Arizona State	0-1-2	6-0-1	DNP	2-1-0	25-6-2	4-5-0	DNP	DNP	DNP	DNP	17-11-1	10-4-4	8-1-2	0-0-0
Arizona	2-3-1	2-2-0	DNP	2-6-1	20-14-2	8-5-0	DNP	1-1-0	DNP	0-2-1	19-8-1	13-1-7	2-1-3	9-1-0
Washington	1-2-2	5-3-5	DNP	5-2-0	27-13-1	3-5-1	DNP	6-2-1	DNP	0-0-0	12-11-5	22-1-3	6-0-0	4-1-0
Washington St.	0-4-1	5-0-0	DNP	4-2-1	34-15-3	0-7-1	DNP	0-0-0	DNP	0-1-0	11-4-3	19-0-3	8-1-1	4-1-1
Colorado	0-1-0	9-2-1	DNP	2-4-1	26-6-2	8-6-1	DNP	0-0-0	DNP	0-0-0	12-13-0	20-2-7	3-0-5	0-1-0
Utah	0-1-3	0-1-0	DNP	9-6-1	19-9-0	10-2-1	DNP	DNP	DNP	DNP	13-5-1	10-5-7	7-3-3	0-0-1
California	0-0-0	0-0-0	DNP	9-2-3	21-9-2	3-2-1	DNP	DNP	8-4-0	DNP	23-12-1	8-4-4	8-0-2	0-0-0

**GAME-BY-GAME STARTERS**

OPPONENT	DATE	SCORE	W/L	1	2	3	4	5
UC Davis	11/7	71-43	W	Williams	Lexie Hull	Carrington	Smith	Fingall
Idaho	11/11	115-71	W	Williams	Lexie Hull	Carrington	Smith	Fingall
San Francisco	11/15	96-62	W	Williams	Lexie Hull	Carrington	Smith	Fingall
FGCU	11/23	88-65	W	Williams	Wilson	Carrington	Smith	Fingall
American	11/24	71-49	W	Williams	Wilson	Carrington	Smith	Fingall
Hawaii	11/25	81-59	W	Williams	Wilson	Carrington	Smith	Fingall
Gonzaga	12/2	73-79	L	Williams	Lacie Hull	Carrington	Smith	Fingall
Baylor	12/15	68-63	W	Williams	Lacie Hull	Carrington	Smith	Fingall
Tennessee	12/18	95-85	W	Williams	Lacie Hull	Carrington	Smith	Fingall
Buffalo	12/21	62-55	W	Williams	Lacie Hull	Carrington	Smith	Fingall
CSUN	12/29	69-43	W	Williams	Lacie Hull	Carrington	Smith	Fingall
USC	1/4	72-64	W	Williams	Lacie Hull	Carrington	Smith	Fingall
UCLA	1/6	86-80	W	Williams	Lacie Hull	Carrington	Smith	Jerome
Arizona State	1/11	72-65	W	Williams	Lacie Hull	Carrington	Smith	Jerome
Arizona	1/13	78-48	W	Williams	Lacie Hull	Carrington	Smith	Jerome
Washington	1/18	91-54	W	Williams	Lacie Hull	Carrington	Smith	Jerome
Washington State	1/20	85-64	W	Williams	Lacie Hull	Carrington	Smith	Jerome
Colorado	1/25	80-69	W	Williams	Lacie Hull	Carrington	Smith	Jerome
Utah	1/27	68-75	L	Williams	Lacie Hull	Carrington	Smith	Jerome
California	1/31	80-81	L	Williams	Lacie Hull	Carrington	Smith	Dodson

**2018-19 Stanford Women's Basketball**  
**Stanford Season/Career Statistics (as of Jan 31, 2019)**  
**All games**

## SEASON STATISTICS

## CAREER STATISTICS

SUMMARY	gp-gs	min/g	fg%	3fg%	ft%	r/g	a/g	stl	blk	pts/g	gp-gs	min/g	fg%	3fg%	ft%	r/g	a/g	stl	blk	pts/g
Smith, Alanna	20-20	28.3	.540	.462	.753	8.3	2.3	23	49	21.2	127-58	21.2	.483	.363	.656	5.5	1.1	98	196	11.2
Williams, Kiana	20-20	33.3	.444	.366	.750	2.4	5.0	22	1	14.4	55-46	28.5	.428	.377	.789	1.9	3.0	52	6	11.8
Carrington, DiJonai	20-20	27.7	.455	.344	.717	7.8	1.7	25	3	13.6	87-27	17.8	.427	.297	.690	4.7	1.2	90	13	7.4
Dodson, Maya	12-1	21.4	.553	.000	.500	4.2	1.3	6	19	8.9	45-5	14.0	.521	.000	.441	2.6	0.5	8	46	4.9
Fingall, Nadia	12-12	20.3	.500	.294	.524	4.9	1.7	5	5	8.0	82-20	12.9	.487	.328	.571	3.2	0.7	34	31	4.4
Hull, Lexie	11-3	21.5	.400	.357	.833	5.1	0.7	11	4	6.2	11-3	21.5	.400	.357	.833	5.1	0.7	11	4	6.2
Hull, Lacie	20-14	25.8	.378	.367	.867	2.4	2.1	33	7	5.5	20-14	25.8	.378	.367	.867	2.4	2.1	33	7	5.5
Jerome, Alyssa	20-7	15.9	.391	.333	.778	3.1	0.8	2	7	3.8	54-8	12.1	.396	.309	.750	1.8	0.5	3	10	2.7
Wilson, Anna	16-3	10.3	.429	.250	.875	1.4	0.9	14	0	3.1	43-5	10.2	.353	.295	.667	1.2	0.6	27	1	3.2
Brown, Jenna	20-0	9.6	.327	.167	.529	1.3	1.1	2	1	2.2	20-0	9.6	.327	.167	.529	1.3	1.1	2	1	2.2
Brewer, Mikaela	10-0	3.9	.357	.333	.750	0.6	0.1	2	2	1.5	37-0	3.5	.275	.258	.750	0.4	0.2	3	2	1.1
Coffee, Shannon	20-0	7.9	.393	.267	.750	1.4	0.8	5	4	1.5	79-2	5.1	.430	.293	.444	1.1	0.3	10	12	1.6
Moschkau, Estella	12-0	4.2	.714	.667	.000	0.5	0.3	2	0	1.2	35-0	2.8	.563	.538	.500	0.3	0.1	2	0	0.7
Romano, Alexa	10-0	4.2	.250	.200	1.000	0.3	0.2	0	0	1.1	78-8	6.5	.344	.300	.727	0.7	0.4	20	4	1.6

SCORING	fg-fga	fg%	3fg-fga	3fg%	ft-fta	ft%	pts	pts/g	fg-fga	fg%	3fg-fga	3fg%	ft-fta	ft%	pts	pts/g
Smith, Alanna	157-291	.540	54-117	.462	55-73	.753	423	21.2	555-1150	.483	128-353	.363	189-288	.656	1427	11.2
Williams, Kiana	108-243	.444	48-131	.366	24-32	.750	288	14.4	236-552	.428	119-316	.377	60-76	.789	651	11.8
Carrington, DiJonai	92-202	.455	22-64	.344	66-92	.717	272	13.6	234-548	.427	57-192	.297	116-168	.690	641	7.4
Dodson, Maya	47-85	.553	0-0	.000	13-26	.500	107	8.9	98-188	.521	0-0	.000	26-59	.441	222	4.9
Fingall, Nadia	40-80	.500	5-17	.294	11-21	.524	96	8.0	148-304	.487	20-61	.328	48-84	.571	364	4.4
Hull, Lexie	24-60	.400	10-28	.357	10-12	.833	68	6.2	24-60	.400	10-28	.357	10-12	.833	68	6.2
Hull, Lacie	37-98	.378	22-60	.367	13-15	.867	109	5.5	37-98	.378	22-60	.367	13-15	.867	109	5.5
Jerome, Alyssa	27-69	.391	8-24	.333	14-18	.778	76	3.8	55-139	.396	17-55	.309	18-24	.750	145	2.7
Wilson, Anna	18-42	.429	7-28	.250	7-8	.875	50	3.1	48-136	.353	31-105	.295	10-15	.667	137	3.2
Brown, Jenna	16-49	.327	2-12	.167	9-17	.529	43	2.2	16-49	.327	2-12	.167	9-17	.529	43	2.2
Brewer, Mikaela	5-14	.357	2-6	.333	3-4	.750	15	1.5	14-51	.275	8-31	.258	3-4	.750	39	1.1
Coffee, Shannon	11-28	.393	4-15	.267	3-4	.750	29	1.5	49-114	.430	12-41	.293	16-36	.444	126	1.6
Moschkau, Estella	5-7	.714	4-6	.667	0-0	.000	14	1.2	9-16	.563	7-13	.538	1-2	.500	26	0.7
Romano, Alexa	3-12	.250	2-10	.200	3-3	1.000	11	1.1	43-125	.344	21-70	.300	16-22	.727	123	1.6

TOTALS	o-reb	d-reb	t-reb	pf	fo	ast	to	a/to	o-reb	d-reb	t-reb	pf	fo	ast	to	a/to
Smith, Alanna	40	126	166	56	3	46	48	1.0	226	473	699	303	10	134	221	0.6
Williams, Kiana	0	48	48	22	0	99	52	1.9	4	102	106	60	0	166	92	1.8
Carrington, DiJonai	33	122	155	33	0	34	45	0.8	105	308	413	134	0	106	138	0.8
Dodson, Maya	27	23	50	26	0	16	10	1.6	59	58	117	64	1	21	36	0.6
Fingall, Nadia	28	31	59	23	0	20	16	1.3	102	157	259	127	1	61	68	0.9
Hull, Lexie	24	32	56	22	0	8	11	0.7	24	32	56	22	0	8	11	0.7
Hull, Lacie	12	35	47	33	0	42	18	2.3	12	35	47	33	0	42	18	2.3
Jerome, Alyssa	16	46	62	33	0	15	14	1.1	27	71	98	60	0	29	36	0.8
Wilson, Anna	6	17	23	13	0	14	9	1.6	7	45	52	39	0	27	29	0.9
Brown, Jenna	3	22	25	10	0	21	19	1.1	3	22	25	10	0	21	19	1.1
Brewer, Mikaela	4	2	6	3	0	1	2	0.5	5	8	13	6	0	7	12	0.6
Coffee, Shannon	10	18	28	9	0	15	6	2.5	22	64	86	33	0	25	37	0.7
Moschkau, Estella	1	5	6	6	0	3	6	0.5	3	7	10	10	0	5	6	0.8
Romano, Alexa	1	2	3	4	0	2	2	1.0	10	44	54	22	0	32	31	1.0

## 2018-19 Individual Game-by-Game

## #02 Coffee, Shannon

Opponent	Date	gs	min	Total		3-Pointers		Free throws		Rebounds				pf	a	t/o	blk	stl	pts	avg
				fg-fga	pct	3fg-fga	pct	ft-fta	pct	off	def	tot	avg							
UC DAVIS	11/7/18		6	0-1	.000	0-0	.000	0-0	.000	1	0	1	1.0	1	1	1	0	0	0	0.0
IDAHO	11/11/18		6	1-1	1.000	0-0	.000	0-0	.000	0	1	1	1.0	1	0	0	0	0	2	1.0
SAN FRANCISCO	11/15/18		8	0-1	.000	0-1	.000	0-0	.000	0	0	0	0.7	0	2	0	1	0	0	0.7
vs FGCU	11/23/18		1	0-0	.000	0-0	.000	0-0	.000	0	1	1	0.8	0	0	0	0	0	0	0.5
vs American	11/24/18		4	1-3	.333	1-2	.500	0-0	.000	0	1	1	0.8	0	0	0	0	0	3	1.0
at Hawaii	11/25/18		5	1-2	.500	0-0	.000	0-0	.000	0	1	1	0.8	0	0	0	0	0	2	1.2
at Gonzaga	12/2/18		2	0-0	.000	0-0	.000	0-0	.000	0	0	0	0.7	0	0	0	0	0	0	1.0
BAYLOR	12/15/18		19	3-4	.750	3-4	.750	0-0	.000	0	2	2	0.9	1	0	1	0	0	9	2.0
at Tennessee	12/18/18		8	0-2	.000	0-2	.000	0-0	.000	0	2	2	1.0	0	1	1	0	0	0	1.8
at Buffalo	12/21/18		0	0-0	.000	0-0	.000	0-0	.000	0	0	0	0.9	0	0	0	0	0	0	1.6
CSUN	12/29/18		9	2-3	.667	0-0	.000	0-0	.000	2	1	3	1.1	0	1	1	1	0	4	1.8
USC	1/4/19		12	2-3	.667	0-0	.000	2-2	1.000	2	2	4	1.3	0	0	1	0	0	6	2.2
UCLA	1/6/19		12	0-0	.000	0-0	.000	0-0	.000	0	0	0	1.2	1	1	0	0	1	0	2.0
at Arizona State	1/11/19		9	0-1	.000	0-1	.000	0-0	.000	0	1	1	1.2	1	2	0	1	2	0	1.9
at Arizona	1/13/19		13	1-4	.250	0-3	.000	0-0	.000	2	1	3	1.3	0	1	0	0	1	2	1.9
WASHINGTON	1/18/19		13	0-1	.000	0-1	.000	1-2	.500	2	0	2	1.4	0	2	1	0	1	1	1.8
WASHINGTON ST.	1/20/19		11	0-0	.000	0-0	.000	0-0	.000	0	4	4	1.5	2	1	0	0	0	0	1.7
at Colorado	1/25/19		8	0-0	.000	0-0	.000	0-0	.000	1	0	1	1.5	0	0	0	0	0	0	1.6
at Utah	1/27/19		11	0-2	.000	0-1	.000	0-0	.000	0	1	1	1.5	1	3	0	1	0	0	1.5
at California	1/31/19		0	0-0	.000	0-0	.000	0-0	.000	0	0	0	1.4	1	0	0	0	0	0	1.5
Totals		0	157	11-28	.393	4-15	.267	3-4	.750	10	18	28	1.4	9	15	6	4	5	29	1.5

## #03 Wilson, Anna

Opponent	Date	gs	min	Total		3-Pointers		Free throws		Rebounds				pf	a	t/o	blk	stl	pts	avg
				fg-fga	pct	3fg-fga	pct	ft-fta	pct	off	def	tot	avg							
UC DAVIS	11/7/18		13	0-4	.000	0-4	.000	0-0	.000	0	5	5	5.0	1	1	1	0	1	0	0.0
IDAHO	11/11/18		11	3-8	.375	2-6	.333	2-2	1.000	1	0	1	3.0	2	1	0	0	2	10	5.0
SAN FRANCISCO	11/15/18		13	1-3	.333	0-1	.000	0-0	.000	0	0	0	2.0	2	0	0	0	1	2	4.0
vs FGCU	11/23/18	*	17	3-6	.500	2-5	.400	0-0	.000	1	3	4	2.5	2	3	1	0	1	8	5.0
vs American	11/24/18	*	5	0-0	.000	0-0	.000	0-0	.000	1	0	1	2.2	3	2	0	0	0	0	4.0
at Hawaii	11/25/18	*	15	0-2	.000	0-2	.000	2-2	1.000	0	4	4	2.5	1	0	0	0	1	2	3.7
at Gonzaga	12/2/18		dnp	-	-	-	-	-	-	-	-	-	-	-	-	-	-	-	-	-
BAYLOR	12/15/18		3	0-0	.000	0-0	.000	1-2	.500	0	0	0	2.1	0	0	1	0	1	1	3.3
at Tennessee	12/18/18		dnp	-	-	-	-	-	-	-	-	-	-	-	-	-	-	-	-	-
at Buffalo	12/21/18		dnp	-	-	-	-	-	-	-	-	-	-	-	-	-	-	-	-	-
USC	1/4/19		5	0-0	.000	0-0	.000	0-0	.000	0	0	0	1.9	0	0	0	0	0	0	2.9
UCLA	1/6/19		1	0-0	.000	0-0	.000	0-0	.000	0	0	0	1.7	0	0	1	0	0	0	2.6
at Arizona State	1/11/19		18	3-5	.600	0-1	.000	0-0	.000	0	0	0	1.5	1	1	2	0	1	6	2.9
at Arizona	1/13/19		11	1-3	.333	0-2	.000	0-0	.000	0	2	2	1.5	0	0	0	0	1	2	2.8
WASHINGTON	1/18/19		14	1-1	1.000	1-1	1.000	2-2	1.000	0	3	3	1.7	0	5	0	0	3	5	3.0
WASHINGTON ST.	1/20/19		10	2-2	1.000	1-1	1.000	0-0	.000	0	0	0	1.5	1	0	0	0	0	5	3.2
at Colorado	1/25/19		22	4-8	.500	1-5	.200	0-0	.000	2	0	2	1.6	0	1	1	0	2	9	3.6
at Utah	1/27/19		5	0-0	.000	0-0	.000	0-0	.000	1	0	1	1.5	0	0	2	0	0	0	3.3
at California	1/31/19		2	0-0	.000	0-0	.000	0-0	.000	0	0	0	1.4	0	0	0	0	0	0	3.1
Totals		3	165	18-42	.429	7-28	.250	7-8	.875	6	17	23	1.4	13	14	9	0	14	50	3.1

## 2018-19 Individual Game-by-Game

## #04 Fingall, Nadia

Opponent	Date	qs	min	Total		3-Pointers		Free throws		Rebounds				pf	a	t/o	blk	stl	pts	avg	
				fg-fga	pct	3fg-fga	pct	ft-fta	pct	off	def	tot	avg								
UC DAVIS	11/7/18	*	16	0-1	.000	0-0	.000	2-2	1.000	1	3	4	4.0	3	0	3	0	0	2	2.0	
IDAHO	11/11/18	*	20	7-9	.778	0-0	.000	2-5	.400	3	5	8	6.0	1	2	1	2	0	16	9.0	
SAN FRANCISCO	11/15/18	*	13	3-6	.500	1-3	.333	0-0	.000	2	1	3	5.0	3	2	1	0	0	7	8.3	
vs FGCU	11/23/18	*	30	11-14	.786	1-2	.500	1-4	.250	5	3	8	5.8	2	5	1	0	1	24	12.3	
vs American	11/24/18	*	24	3-8	.375	1-4	.250	3-4	.750	4	1	5	5.6	3	2	1	0	1	10	11.8	
at Hawaii	11/25/18	*	24	3-7	.429	1-1	1.000	0-0	.000	2	4	6	5.7	1	1	2	0	1	7	11.0	
at Gonzaga	12/2/18	*	25	2-4	.500	1-2	.500	0-0	.000	1	2	3	5.3	2	3	1	1	2	5	10.1	
BAYLOR	12/15/18	*	17	1-8	.125	0-3	.000	0-0	.000	2	1	3	5.0	3	1	1	1	0	2	9.1	
at Tennessee	12/18/18	*	18	1-4	.250	0-0	.000	1-2	.500	2	4	6	5.1	0	1	2	0	0	3	8.4	
at Buffalo	12/21/18	*	29	5-9	.556	0-0	.000	2-4	.500	3	4	7	5.3	1	1	1	0	0	12	8.8	
CSUN	12/29/18	*	10	3-8	.375	0-1	.000	0-0	.000	1	1	2	5.0	3	0	0	0	0	6	8.5	
USC	1/4/19	*	18	1-2	.500	0-1	.000	0-0	.000	2	2	4	4.9	1	2	2	1	0	2	8.0	
at Arizona State	1/11/19		dnp	-	-	-	-	-	-	-	-	-	-	-	-	-	-	-	-	-	
Totals			12	244	40-80	.500	5-17	.294	11-21	.524	28	31	59	4.9	23	20	16	5	5	96	8.0

## #10 Jerome, Alyssa

Opponent	Date	qs	min	Total		3-Pointers		Free throws		Rebounds				pf	a	t/o	blk	stl	pts	avg	
				fg-fga	pct	3fg-fga	pct	ft-fta	pct	off	def	tot	avg								
UC DAVIS	11/7/18		16	2-5	.400	0-1	.000	2-2	1.000	2	6	8	8.0	0	0	1	0	0	6	6.0	
IDAHO	11/11/18		13	1-2	.500	0-1	.000	2-2	1.000	0	6	6	7.0	4	2	1	0	0	4	5.0	
SAN FRANCISCO	11/15/18		16	3-4	.750	1-2	.500	0-1	.000	0	2	2	5.3	2	0	0	2	0	7	5.7	
vs FGCU	11/23/18		14	1-4	.250	0-0	.000	0-0	.000	0	3	3	4.8	1	1	2	0	0	2	4.8	
vs American	11/24/18		12	0-2	.000	0-1	.000	3-4	.750	2	1	3	4.4	2	0	1	0	0	3	4.4	
at Hawaii	11/25/18		11	0-3	.000	0-1	.000	4-6	.667	2	0	2	4.0	1	1	0	0	1	4	4.3	
at Gonzaga	12/2/18		18	2-5	.400	2-2	1.000	0-0	.000	1	3	4	4.0	1	0	0	1	0	6	4.6	
BAYLOR	12/15/18		8	0-1	.000	0-0	.000	0-0	.000	0	2	2	3.8	0	0	0	0	0	0	4.0	
at Tennessee	12/18/18		4	0-1	.000	0-0	.000	0-0	.000	1	1	2	3.6	0	0	2	0	0	0	3.6	
at Buffalo	12/21/18		9	0-1	.000	0-0	.000	0-0	.000	0	0	0	3.2	2	1	1	0	1	0	3.2	
CSUN	12/29/18		22	2-4	.500	1-2	.500	0-0	.000	0	2	2	3.1	2	2	1	0	0	5	3.4	
USC	1/4/19		14	0-1	.000	0-0	.000	0-0	.000	1	1	2	3.0	1	1	0	0	0	0	3.1	
UCLA	1/6/19	*	20	2-2	1.000	2-2	1.000	0-0	.000	0	3	3	3.0	1	0	0	0	0	6	3.3	
at Arizona State	1/11/19	*	13	1-3	.333	0-0	.000	0-0	.000	0	1	1	2.9	1	0	1	0	0	2	3.2	
at Arizona	1/13/19	*	28	1-5	.200	0-3	.000	0-0	.000	0	6	6	3.1	3	1	3	1	0	2	3.1	
WASHINGTON	1/18/19	*	18	2-2	1.000	0-0	.000	1-1	1.000	1	1	2	3.0	2	0	0	0	0	5	3.3	
WASHINGTON ST.	1/20/19	*	24	2-7	.286	0-2	.000	0-0	.000	0	2	2	2.9	1	1	0	1	0	4	3.3	
at Colorado	1/25/19	*	15	1-2	.500	0-0	.000	0-0	.000	3	1	4	3.0	1	1	0	1	0	2	3.2	
at Utah	1/27/19	*	21	4-8	.500	1-3	.333	0-0	.000	2	4	6	3.2	4	1	0	1	0	9	3.5	
at California	1/31/19		21	3-7	.429	1-4	.250	2-2	1.000	1	1	2	3.1	4	3	1	0	0	9	3.8	
Totals			7	317	27-69	.391	8-24	.333	14-18	.778	16	46	62	3.1	33	15	14	7	2	76	3.8

**2018-19 Individual Game-by-Game****#11 Smith, Alanna**

Opponent	Date	qs	min	Total		3-Pointers		Free throws		Rebounds				pf	a	t/o	blk	stl	pts	avg	
				fg-fga	pct	3fg-fga	pct	ft-fta	pct	off	def	tot	avg								
UC DAVIS	11/7/18	*	15	4-7	.571	1-2	.500	7-7	1.000	1	1	2	2.0	4	1	4	1	1	16	16.0	
IDAHO	11/11/18	*	24	8-12	.667	2-5	.400	1-1	1.000	4	5	9	5.5	0	4	3	1	2	19	17.5	
SAN FRANCISCO	11/15/18	*	26	6-12	.500	5-8	.625	1-2	.500	0	7	7	6.0	1	3	1	4	1	18	17.7	
vs FGCU	11/23/18	*	13	1-5	.200	0-1	.000	4-5	.800	2	4	6	6.0	4	2	3	1	1	6	14.8	
vs American	11/24/18	*	31	10-18	.556	3-6	.500	2-3	.667	1	7	8	6.4	1	4	3	1	2	25	16.8	
at Hawaii	11/25/18	*	25	12-15	.800	3-6	.500	3-3	1.000	2	2	4	6.0	2	3	3	1	0	30	19.0	
at Gonzaga	12/2/18	*	24	4-9	.444	2-5	.400	3-6	.500	2	5	7	6.1	5	1	3	2	3	13	18.1	
BAYLOR	12/15/18	*	28	7-12	.583	5-9	.556	2-8	.250	0	8	8	6.4	4	2	3	2	1	21	18.5	
at Tennessee	12/18/18	*	21	5-6	.833	3-4	.750	3-4	.750	1	2	3	6.0	5	3	2	1	0	16	18.2	
at Buffalo	12/21/18	*	38	12-22	.545	4-9	.444	2-2	1.000	3	10	13	6.7	2	5	5	3	0	30	19.4	
CSUN	12/29/18	*	17	6-10	.600	0-2	.000	2-2	1.000	1	4	5	6.5	3	1	0	1	0	14	18.9	
USC	1/4/19	*	39	8-21	.381	3-9	.333	0-0	.000	2	9	11	6.9	2	2	1	5	0	19	18.9	
UCLA	1/6/19	*	40	8-18	.444	3-5	.600	5-6	.833	2	9	11	7.2	4	3	2	5	2	24	19.3	
at Arizona State	1/11/19	*	37	9-15	.600	1-3	.333	6-6	1.000	1	5	6	7.1	4	2	2	1	1	25	19.7	
at Arizona	1/13/19	*	27	8-16	.500	4-6	.667	0-0	.000	5	9	14	7.6	2	2	3	7	0	20	19.7	
WASHINGTON	1/18/19	*	29	12-18	.667	3-6	.500	0-0	.000	6	7	13	7.9	1	1	3	3	0	27	20.2	
WASHINGTON ST.	1/20/19	*	31	13-17	.765	4-5	.800	4-6	.667	3	12	15	8.4	0	3	1	2	1	34	21.0	
at Colorado	1/25/19	*	38	9-19	.474	3-8	.375	5-6	.833	1	5	6	8.2	3	2	2	5	3	26	21.3	
at Utah	1/27/19	*	25	6-17	.353	3-9	.333	4-5	.800	0	9	9	8.3	5	0	4	3	0	19	21.2	
at California	1/31/19	*	37	9-22	.409	2-9	.222	1-1	1.000	3	6	9	8.3	4	2	0	0	5	21	21.2	
Totals			20	565	157-291	.540	54-117	.462	55-73	.753	40	126	166	8.3	56	46	48	49	23	423	21.2

**#12 Hull, Lexie**

Opponent	Date	qs	min	Total		3-Pointers		Free throws		Rebounds				pf	a	t/o	blk	stl	pts	avg	
				fg-fga	pct	3fg-fga	pct	ft-fta	pct	off	def	tot	avg								
UC DAVIS	11/7/18	*	27	5-10	.500	1-4	.250	0-0	.000	3	8	11	11.0	3	0	2	1	4	11	11.0	
IDAHO	11/11/18	*	25	6-12	.500	5-10	.500	0-0	.000	2	3	5	8.0	3	0	0	2	2	17	14.0	
SAN FRANCISCO	11/15/18	*	25	1-5	.200	0-1	.000	2-2	1.000	4	1	5	7.0	2	3	2	0	2	4	10.7	
vs FGCU	11/23/18		dnp	-	-	-	-	-	-	-	-	-	-	-	-	-	-	-	-	-	
vs American	11/24/18		dnp	-	-	-	-	-	-	-	-	-	-	-	-	-	-	-	-	-	
at Hawaii	11/25/18		dnp	-	-	-	-	-	-	-	-	-	-	-	-	-	-	-	-	-	
at Gonzaga	12/2/18		dnp	-	-	-	-	-	-	-	-	-	-	-	-	-	-	-	-	-	
at Tennessee	12/18/18		dnp	-	-	-	-	-	-	-	-	-	-	-	-	-	-	-	-	-	
at Buffalo	12/21/18		dnp	-	-	-	-	-	-	-	-	-	-	-	-	-	-	-	-	-	
UCLA	1/6/19		8	0-4	.000	0-2	.000	0-0	.000	3	0	3	6.0	1	0	3	0	0	0	8.0	
at Arizona State	1/11/19		15	1-2	.500	0-0	.000	2-2	1.000	2	3	5	5.8	1	0	1	1	0	4	7.2	
at Arizona	1/13/19		14	3-4	.750	2-2	1.000	0-0	.000	2	3	5	5.7	4	0	1	0	0	8	7.3	
WASHINGTON	1/18/19		24	1-3	.333	1-2	.500	0-0	.000	2	3	5	5.6	1	1	1	0	1	3	6.7	
WASHINGTON ST.	1/20/19		24	0-6	.000	0-2	.000	0-0	.000	1	6	7	5.8	1	1	1	0	1	0	5.9	
at Colorado	1/25/19		18	3-5	.600	0-2	.000	2-2	1.000	3	3	6	5.8	2	1	0	0	1	8	6.1	
at Utah	1/27/19		33	3-5	.600	1-1	1.000	3-4	.750	1	1	2	5.4	2	1	0	0	0	10	6.5	
at California	1/31/19		23	1-4	.250	0-2	.000	1-2	.500	1	1	2	5.1	2	1	0	0	0	3	6.2	
Totals			3	236	24-60	.400	10-28	.357	10-12	.833	24	32	56	5.1	22	8	11	4	11	68	6.2



**2018-19 Individual Game-by-Game****#14 Brewer, Mikaela**

Opponent	Date	gs	min	Total		3-Pointers		Free throws		Rebounds				pf	a	t/o	blk	stl	pts	avg
				fg-fga	pct	3fg-fga	pct	ft-fga	pct	off	def	tot	avg							
UC DAVIS	11/7/18		2	0-1	.000	0-1	.000	0-0	.000	0	0	0	0.0	0	0	0	1	0	0	0.0
IDAHO	11/11/18		5	1-2	.500	0-1	.000	0-0	.000	0	0	0	0.0	0	0	1	0	0	2	1.0
SAN FRANCISCO	11/15/18		4	1-1	1.000	0-0	.000	2-2	1.000	0	1	1	0.3	1	0	0	0	0	4	2.0
vs FGCU	11/23/18		dnp	-	-	-	-	-	-	-	-	-	-	-	-	-	-	-	-	-
vs American	11/24/18		dnp	-	-	-	-	-	-	-	-	-	-	-	-	-	-	-	-	-
at Hawaii	11/25/18		1	0-0	.000	0-0	.000	0-0	.000	0	0	0	0.3	0	0	0	0	0	0	1.5
at Gonzaga	12/2/18		dnp	-	-	-	-	-	-	-	-	-	-	-	-	-	-	-	-	-
at Tennessee	12/18/18		dnp	-	-	-	-	-	-	-	-	-	-	-	-	-	-	-	-	-
at Buffalo	12/21/18		1	0-0	.000	0-0	.000	0-0	.000	0	0	0	0.2	1	0	0	0	0	0	1.2
CSUN	12/29/18		8	1-3	.333	0-1	.000	0-0	.000	1	1	2	0.5	0	0	1	0	0	2	1.3
at Arizona State	1/11/19		dnp	-	-	-	-	-	-	-	-	-	-	-	-	-	-	-	-	-
at Arizona	1/13/19		6	0-1	.000	0-0	.000	1-2	.500	1	0	1	0.6	1	0	0	0	1	1	1.3
WASHINGTON	1/18/19		6	2-5	.400	2-3	.667	0-0	.000	2	0	2	0.8	0	1	0	0	1	6	1.9
WASHINGTON ST.	1/20/19		6	0-1	.000	0-0	.000	0-0	.000	0	0	0	0.7	0	0	0	1	0	0	1.7
at Colorado	1/25/19		0	0-0	.000	0-0	.000	0-0	.000	0	0	0	0.6	0	0	0	0	0	0	1.5
<b>Totals</b>		<b>0</b>	<b>39</b>	<b>5-14</b>	<b>.357</b>	<b>2-6</b>	<b>.333</b>	<b>3-4</b>	<b>.750</b>	<b>4</b>	<b>2</b>	<b>6</b>	<b>0.6</b>	<b>3</b>	<b>1</b>	<b>2</b>	<b>2</b>	<b>2</b>	<b>15</b>	<b>1.5</b>

**#15 Dodson, Maya**

Opponent	Date	gs	min	Total		3-Pointers		Free throws		Rebounds				pf	a	t/o	blk	stl	pts	avg
				fg-fga	pct	3fg-fga	pct	ft-fga	pct	off	def	tot	avg							
UC DAVIS	11/7/18		25	5-8	.625	0-0	.000	0-2	.000	4	2	6	6.0	3	1	1	3	2	10	10.0
IDAHO	11/11/18		19	5-8	.625	0-0	.000	0-0	.000	3	2	5	5.5	2	0	0	1	1	10	10.0
SAN FRANCISCO	11/15/18		19	4-7	.571	0-0	.000	2-5	.400	0	3	3	4.7	2	6	0	4	0	10	10.0
vs FGCU	11/23/18		22	3-5	.600	0-0	.000	0-2	.000	2	2	4	4.5	1	1	1	0	0	6	9.0
vs American	11/24/18		18	2-4	.500	0-0	.000	0-0	.000	1	2	3	4.2	1	1	1	1	0	4	8.0
at Hawaii	11/25/18		15	3-4	.750	0-0	.000	1-1	1.000	0	1	1	3.7	2	0	1	2	0	7	7.8
at Gonzaga	12/2/18		20	3-6	.500	0-0	.000	2-5	.400	4	0	4	3.7	2	2	2	2	0	8	7.9
BAYLOR	12/15/18		27	3-7	.429	0-0	.000	3-4	.750	2	3	5	3.9	3	1	0	1	1	9	8.0
at Tennessee	12/18/18		32	5-7	.714	0-0	.000	0-0	.000	4	5	9	4.4	3	2	1	1	0	10	8.2
at Buffalo	12/21/18		17	3-8	.375	0-0	.000	3-3	1.000	1	0	1	4.1	2	1	2	1	0	9	8.3
CSUN	12/29/18		25	8-17	.471	0-0	.000	0-0	.000	3	2	5	4.2	1	1	1	3	1	16	9.0
at Arizona State	1/11/19		dnp	-	-	-	-	-	-	-	-	-	-	-	-	-	-	-	-	-
at California	1/31/19	*	18	3-4	.750	0-0	.000	2-4	.500	3	1	4	4.2	4	0	0	0	1	8	8.9
<b>Totals</b>		<b>1</b>	<b>257</b>	<b>47-85</b>	<b>.553</b>	<b>0-0</b>	<b>.000</b>	<b>13-26</b>	<b>.500</b>	<b>27</b>	<b>23</b>	<b>50</b>	<b>4.2</b>	<b>26</b>	<b>16</b>	<b>10</b>	<b>19</b>	<b>6</b>	<b>107</b>	<b>8.9</b>

**#20 Moschkau, Estella**

Opponent	Date	gs	min	Total		3-Pointers		Free throws		Rebounds				pf	a	t/o	blk	stl	pts	avg
				fg-fga	pct	3fg-fga	pct	ft-fga	pct	off	def	tot	avg							
UC DAVIS	11/7/18		4	0-0	.000	0-0	.000	0-0	.000	0	0	0	0.0	0	0	0	0	0	0	0.0
IDAHO	11/11/18		6	1-1	1.000	1-1	1.000	0-0	.000	0	0	0	0.0	0	1	1	0	0	3	1.5
SAN FRANCISCO	11/15/18		5	2-2	1.000	1-1	1.000	0-0	.000	1	0	1	0.3	0	1	1	0	0	5	2.7
vs FGCU	11/23/18		2	1-1	1.000	1-1	1.000	0-0	.000	0	0	0	0.3	0	0	1	0	0	3	2.8
vs American	11/24/18		2	0-0	.000	0-0	.000	0-0	.000	0	0	0	0.2	0	0	0	0	0	0	2.2
at Hawaii	11/25/18		6	0-0	.000	0-0	.000	0-0	.000	0	0	0	0.2	1	0	2	0	2	0	1.8
at Gonzaga	12/2/18		dnp	-	-	-	-	-	-	-	-	-	-	-	-	-	-	-	-	-
at Tennessee	12/18/18		dnp	-	-	-	-	-	-	-	-	-	-	-	-	-	-	-	-	-
at Buffalo	12/21/18		0	0-0	.000	0-0	.000	0-0	.000	0	0	0	0.1	0	0	0	0	0	0	1.6
CSUN	12/29/18		12	1-2	.500	1-2	.500	0-0	.000	0	2	2	0.4	2	0	1	0	0	3	1.8
at Arizona State	1/11/19		dnp	-	-	-	-	-	-	-	-	-	-	-	-	-	-	-	-	-
at Arizona	1/13/19		4	0-0	.000	0-0	.000	0-0	.000	0	2	2	0.6	2	1	0	0	0	0	1.6
WASHINGTON	1/18/19		6	0-1	.000	0-1	.000	0-0	.000	0	0	0	0.5	0	0	0	0	0	0	1.4
WASHINGTON ST.	1/20/19		3	0-0	.000	0-0	.000	0-0	.000	0	1	1	0.5	1	0	0	0	0	0	1.3
at Colorado	1/25/19		0	0-0	.000	0-0	.000	0-0	.000	0	0	0	0.5	0	0	0	0	0	0	1.2
<b>Totals</b>		<b>0</b>	<b>50</b>	<b>5-7</b>	<b>.714</b>	<b>4-6</b>	<b>.667</b>	<b>0-0</b>	<b>.000</b>	<b>1</b>	<b>5</b>	<b>6</b>	<b>0.5</b>	<b>6</b>	<b>3</b>	<b>6</b>	<b>0</b>	<b>2</b>	<b>14</b>	<b>1.2</b>

**2018-19 Individual Game-by-Game****#21 Carrington, DiJonai**

Opponent	Date	qs	min	Total		3-Pointers		Free throws		Rebounds				pf	a	t/o	blk	stl	pts	avg	
				fg-fga	pct	3fg-fga	pct	ft-fta	pct	off	def	tot	avg								
UC DAVIS	11/7/18	*	13	0-6	.000	0-2	.000	0-0	.000	0	2	2	2.0	2	1	1	0	2	0	0.0	
IDAHO	11/11/18	*	11	2-8	.250	1-4	.250	1-2	.500	3	1	4	3.0	0	1	0	0	0	6	3.0	
SAN FRANCISCO	11/15/18	*	18	4-7	.571	1-4	.250	0-0	.000	1	4	5	3.7	1	4	2	0	0	9	5.0	
vs FGCU	11/23/18	*	32	2-5	.400	0-0	.000	12-15	.800	0	9	9	5.0	1	3	2	0	1	16	7.8	
vs American	11/24/18	*	22	6-7	.857	0-0	.000	1-1	1.000	2	5	7	5.4	2	1	1	0	2	13	8.8	
at Hawaii	11/25/18	*	19	4-6	.667	2-2	1.000	2-3	.667	1	3	4	5.2	1	4	2	0	3	12	9.3	
at Gonzaga	12/2/18	*	27	5-13	.385	1-5	.200	2-5	.400	0	3	3	4.9	3	1	2	0	3	13	9.9	
BAYLOR	12/15/18	*	27	3-6	.500	1-1	1.000	3-7	.429	1	5	6	5.0	3	2	1	1	1	10	9.9	
at Tennessee	12/18/18	*	38	11-15	.733	4-5	.800	7-9	.778	0	13	13	5.9	1	2	5	0	1	33	12.4	
at Buffalo	12/21/18	*	35	1-7	.143	0-3	.000	2-2	1.000	1	9	10	6.3	3	0	5	1	2	4	11.6	
CSUN	12/29/18	*	26	2-6	.333	1-3	.333	0-0	.000	2	10	12	6.8	1	2	1	0	3	5	11.0	
USC	1/4/19	*	29	4-13	.308	0-4	.000	6-9	.667	2	5	7	6.8	2	0	2	0	1	14	11.3	
UCLA	1/6/19	*	39	11-18	.611	3-6	.500	5-6	.833	4	5	9	7.0	3	1	6	0	1	30	12.7	
at Arizona State	1/11/19	*	36	6-11	.545	3-5	.600	2-2	1.000	3	8	11	7.3	2	1	5	0	1	17	13.0	
at Arizona	1/13/19	*	30	6-16	.375	3-8	.375	4-4	1.000	0	8	8	7.3	0	1	2	0	0	19	13.4	
WASHINGTON	1/18/19	*	29	6-12	.500	0-2	.000	0-0	.000	4	7	11	7.6	1	5	1	0	1	12	13.3	
WASHINGTON ST.	1/20/19	*	24	4-8	.500	0-1	.000	3-3	1.000	1	3	4	7.4	3	3	2	1	1	11	13.2	
at Colorado	1/25/19	*	32	2-12	.167	0-2	.000	8-11	.727	2	11	13	7.7	1	0	2	0	1	12	13.1	
at Utah	1/27/19	*	33	6-15	.400	1-4	.250	0-1	.000	2	3	5	7.5	0	1	2	0	0	13	13.1	
at California	1/31/19	*	34	7-11	.636	1-3	.333	8-12	.667	4	8	12	7.8	3	1	1	0	1	23	13.6	
Totals			20	554	92-202	.455	22-64	.344	66-92	.717	33	122	155	7.8	33	34	45	3	25	272	13.6

**#23 Williams, Kiana**

Opponent	Date	qs	min	Total		3-Pointers		Free throws		Rebounds				pf	a	t/o	blk	stl	pts	avg	
				fg-fga	pct	3fg-fga	pct	ft-fta	pct	off	def	tot	avg								
UC DAVIS	11/7/18	*	18	5-8	.625	3-5	.600	1-2	.500	0	1	1	1.0	0	3	2	0	0	14	14.0	
IDAHO	11/11/18	*	28	7-10	.700	4-7	.571	1-1	1.000	0	3	3	2.0	1	9	2	0	1	19	16.5	
SAN FRANCISCO	11/15/18	*	26	8-13	.615	4-6	.667	1-1	1.000	0	0	0	1.3	1	3	2	0	0	21	18.0	
vs FGCU	11/23/18	*	35	6-10	.600	5-8	.625	0-0	.000	0	6	6	2.5	0	2	4	0	1	17	17.8	
vs American	11/24/18	*	33	3-12	.250	2-6	.333	1-2	.500	0	0	0	2.0	2	7	3	0	0	9	16.0	
at Hawaii	11/25/18	*	35	4-9	.444	0-5	.000	1-2	.500	0	4	4	2.3	0	3	1	0	2	9	14.8	
at Gonzaga	12/2/18	*	40	7-17	.412	2-6	.333	2-2	1.000	0	1	1	2.1	2	3	4	0	1	18	15.3	
BAYLOR	12/15/18	*	40	5-16	.313	3-10	.300	0-0	.000	0	1	1	2.0	2	5	2	0	2	13	15.0	
at Tennessee	12/18/18	*	38	5-13	.385	3-7	.429	3-4	.750	0	5	5	2.3	3	7	6	0	2	16	15.1	
at Buffalo	12/21/18	*	40	2-9	.222	1-6	.167	2-4	.500	0	2	2	2.3	3	7	1	0	2	7	14.3	
CSUN	12/29/18	*	21	0-6	.000	0-4	.000	0-0	.000	0	2	2	2.3	0	1	1	0	0	0	13.0	
USC	1/4/19	*	40	8-18	.444	4-11	.364	2-3	.667	0	4	4	2.4	2	4	7	0	0	22	13.8	
UCLA	1/6/19	*	39	7-14	.500	3-9	.333	4-5	.800	0	2	2	2.4	0	10	2	0	3	21	14.3	
at Arizona State	1/11/19	*	39	3-8	.375	1-3	.333	3-3	1.000	0	4	4	2.5	1	4	4	0	1	10	14.0	
at Arizona	1/13/19	*	25	5-7	.714	3-3	1.000	0-0	.000	0	1	1	2.4	0	7	0	0	0	13	13.9	
WASHINGTON	1/18/19	*	26	9-17	.529	4-11	.364	0-0	.000	0	1	1	2.3	1	3	2	0	4	22	14.4	
WASHINGTON ST.	1/20/19	*	29	8-14	.571	3-6	.500	0-0	.000	0	0	0	2.2	2	3	3	0	1	19	14.7	
at Colorado	1/25/19	*	39	8-20	.400	2-9	.222	2-2	1.000	0	2	2	2.2	0	7	1	0	1	20	15.0	
at Utah	1/27/19	*	37	4-13	.308	1-8	.125	1-1	1.000	0	5	5	2.3	1	7	2	1	1	10	14.7	
at California	1/31/19	*	38	4-9	.444	0-1	.000	0-0	.000	0	4	4	2.4	1	4	3	0	0	8	14.4	
Totals			20	666	108-243	.444	48-131	.366	24-32	.750	0	48	48	2.4	22	99	52	1	22	288	14.4

## 2018-19 Individual Game-by-Game

## #24 Hull, Lacie

Opponent	Date	qs	min	Total		3-Pointers		Free throws		Rebounds				pf	a	t/o	blk	stl	pts	avg	
				fg-fga	pct	3fg-fga	pct	ft-fta	pct	off	def	tot	avg								
UC DAVIS	11/7/18		17	1-5	.200	0-3	.000	0-0	.000	0	3	3	3.0	0	0	1	0	2	2	2.0	
IDAHO	11/11/18		12	0-2	.000	0-0	.000	0-0	.000	2	0	2	2.5	3	2	0	1	0	0	1.0	
SAN FRANCISCO	11/15/18		13	2-5	.400	2-4	.500	0-0	.000	0	1	1	2.0	2	0	0	0	0	6	2.7	
vs FGCU	11/23/18		22	1-3	.333	1-2	.500	0-0	.000	1	3	4	2.5	3	4	0	0	2	3	2.8	
vs American	11/24/18		33	0-3	.000	0-1	.000	0-0	.000	0	3	3	2.6	1	0	2	0	7	0	2.2	
at Hawaii	11/25/18		28	3-4	.750	2-3	.667	0-0	.000	0	3	3	2.7	0	6	2	2	3	8	3.2	
at Gonzaga	12/2/18	*	37	2-3	.667	1-2	.500	4-4	1.000	1	0	1	2.4	2	3	1	0	3	9	4.0	
BAYLOR	12/15/18	*	22	1-6	.167	1-3	.333	0-0	.000	2	0	2	2.4	3	0	1	0	1	3	3.9	
at Tennessee	12/18/18	*	32	5-8	.625	4-5	.800	0-0	.000	1	2	3	2.4	3	1	0	1	0	14	5.0	
at Buffalo	12/21/18	*	24	0-1	.000	0-1	.000	0-0	.000	0	5	5	2.7	2	2	2	0	0	0	4.5	
CSUN	12/29/18	*	23	4-7	.571	2-5	.400	0-0	.000	2	2	4	2.8	1	2	1	0	3	10	5.0	
USC	1/4/19	*	36	3-7	.429	1-4	.250	0-0	.000	0	8	8	3.3	3	0	1	1	2	7	5.2	
UCLA	1/6/19	*	38	2-6	.333	1-4	.250	0-0	.000	0	2	2	3.2	0	6	0	0	2	5	5.2	
at Arizona State	1/11/19	*	30	3-5	.600	1-2	.500	1-1	1.000	0	1	1	3.0	1	2	0	0	2	8	5.4	
at Arizona	1/13/19	*	22	0-2	.000	0-2	.000	2-2	1.000	0	1	1	2.9	2	3	1	0	1	2	5.1	
WASHINGTON	1/18/19	*	19	2-10	.200	2-8	.250	0-0	.000	0	0	0	2.7	2	0	4	0	0	6	5.2	
WASHINGTON ST.	1/20/19	*	24	2-7	.286	2-4	.500	2-2	1.000	1	0	1	2.6	1	1	0	1	1	8	5.4	
at Colorado	1/25/19	*	25	1-2	.500	0-1	.000	1-1	1.000	0	0	0	2.4	3	5	0	0	2	3	5.2	
at Utah	1/27/19	*	33	2-5	.400	1-2	.500	2-4	.500	2	1	3	2.5	1	3	1	1	2	7	5.3	
at California	1/31/19	*	26	3-7	.429	1-4	.250	1-1	1.000	0	0	0	2.4	0	2	1	0	0	8	5.5	
Totals			14	516	37-98	.378	22-60	.367	13-15	.867	12	35	47	2.4	33	42	18	7	33	109	5.5

## #54 Brown, Jenna

Opponent	Date	qs	min	Total		3-Pointers		Free throws		Rebounds				pf	a	t/o	blk	stl	pts	avg	
				fg-fga	pct	3fg-fga	pct	ft-fta	pct	off	def	tot	avg								
UC DAVIS	11/7/18		19	2-2	1.000	0-0	.000	0-2	.000	0	3	3	3.0	1	2	3	0	0	4	4.0	
IDAHO	11/11/18		13	3-6	.500	1-4	.250	0-0	.000	0	3	3	3.0	0	3	1	0	0	7	5.5	
SAN FRANCISCO	11/15/18		9	1-4	.250	0-1	.000	1-2	.500	0	2	2	2.7	1	0	0	0	0	3	4.7	
vs FGCU	11/23/18		4	0-2	.000	0-0	.000	0-0	.000	0	0	0	2.0	0	1	0	0	0	0	3.5	
vs American	11/24/18		12	1-4	.250	0-1	.000	2-3	.667	0	3	3	2.2	0	1	0	0	0	4	3.6	
at Hawaii	11/25/18		14	0-1	.000	0-1	.000	0-0	.000	0	0	0	1.8	2	0	0	0	0	0	3.0	
at Gonzaga	12/2/18		7	0-0	.000	0-0	.000	1-2	.500	0	0	0	1.6	1	1	0	0	0	1	2.7	
BAYLOR	12/15/18		8	0-0	.000	0-0	.000	0-0	.000	0	1	1	1.5	0	2	0	0	0	0	2.4	
at Tennessee	12/18/18		9	1-4	.250	0-1	.000	1-2	.500	0	1	1	1.4	0	2	0	0	0	3	2.4	
at Buffalo	12/21/18		6	0-1	.000	0-0	.000	0-0	.000	0	1	1	1.4	2	1	1	0	0	0	2.2	
CSUN	12/29/18		22	1-6	.167	0-0	.000	0-2	.000	2	5	7	1.9	0	3	2	0	0	2	2.2	
USC	1/4/19		7	1-2	.500	0-0	.000	0-0	.000	0	0	0	1.8	0	3	1	0	0	2	2.2	
UCLA	1/6/19		3	0-1	.000	0-0	.000	0-0	.000	0	0	0	1.6	0	0	1	0	1	0	2.0	
at Arizona State	1/11/19		3	0-0	.000	0-0	.000	0-0	.000	0	0	0	1.5	0	0	1	0	0	0	1.9	
at Arizona	1/13/19		20	3-5	.600	1-2	.500	2-2	1.000	0	1	1	1.5	1	0	4	0	0	9	2.3	
WASHINGTON	1/18/19		16	2-7	.286	0-1	.000	0-0	.000	1	0	1	1.4	1	0	1	0	1	4	2.4	
WASHINGTON ST.	1/20/19		14	1-2	.500	0-0	.000	2-2	1.000	0	1	1	1.4	0	1	2	1	0	4	2.5	
at Colorado	1/25/19		3	0-1	.000	0-1	.000	0-0	.000	0	1	1	1.4	0	0	0	0	0	0	2.4	
at Utah	1/27/19		2	0-0	.000	0-0	.000	0-0	.000	0	0	0	1.3	1	1	1	0	0	0	2.3	
at California	1/31/19		1	0-1	.000	0-0	.000	0-0	.000	0	0	0	1.3	0	0	0	0	0	0	2.2	
Totals			0	192	16-49	.327	2-12	.167	9-17	.529	3	22	25	1.3	10	21	19	1	2	43	2.2

## Stanford Women's Basketball Individual Career History

### Brewer, Mikaela

Season	gp-gs	min/avg	Total		3-Point		F-Throws			Rebounds				Scoring						
			fg-fga	pct	fg-fga	pct	ft-fta	pct	off	def	tot	avg	pf	fo	ast	to	blk	stl	pts	avg
2016-17	10-0	60/6.0	7-23	.304	5-16	.313	0-0	.000	1	5	6	0.6	3	0	4	7	0	1	19	1.9
2017-18	17-0	31/1.8	2-14	.143	1-9	.111	0-0	.000	0	1	1	0.1	0	0	2	3	0	0	5	0.3
2018-19	10-0	39/3.9	5-14	.357	2-6	.333	3-4	.750	4	2	6	0.6	3	0	1	2	2	2	15	1.5
<b>TOTAL</b>	<b>37-0</b>	<b>130/3.5</b>	<b>14-51</b>	<b>.275</b>	<b>8-31</b>	<b>.258</b>	<b>3-4</b>	<b>.750</b>	<b>5</b>	<b>8</b>	<b>13</b>	<b>0.4</b>	<b>6</b>	<b>0</b>	<b>7</b>	<b>12</b>	<b>2</b>	<b>3</b>	<b>39</b>	<b>1.1</b>

## SINGLE-GAME HIGHS [all-time ranking]:

Points: 6, Washington -- 1/18/19; Cal Poly -- 11/11/16

Rebounds: 2, Washington -- 1/18/19; Cal Poly -- 11/11/16; CSUN -- 12/29/18

Assists: 2, CSUN -- 11/20/16; vs Wichita St. -- 11/25/16

Steals: 1, at Arizona -- 1/13/19; Washington -- 1/18/19; UC Davis -- 12/4/16

Blocks: 1, Washington St. -- 1/20/19; UC Davis -- 11/7/18; UC Davis -- 11/07/18

FG made: 2, Washington -- 1/18/19; Cal Poly -- 11/11/16; vs Wichita St. -- 11/25/16

FG attempts: 6, CSUN -- 11/20/16; vs Wichita St. -- 11/25/16

3FG made: 2, Washington -- 1/18/19; Cal Poly -- 11/11/16

3FG attempts: 5, vs Wichita St. -- 11/25/16

FT made: 2, San Francisco -- 11/15/18; San Francisco -- 11/15/18

FT attempts: 2, at Arizona -- 1/13/19; San Francisco -- 11/15/18; San Francisco -- 11/15/18

### Brown, Jenna

Season	gp-gs	min/avg	Total		3-Point		F-Throws			Rebounds				Scoring						
			fg-fga	pct	fg-fga	pct	ft-fta	pct	off	def	tot	avg	pf	fo	ast	to	blk	stl	pts	avg
2018-19	20-0	192/9.6	16-49	.327	2-12	.167	9-17	.529	3	22	25	1.3	10	0	21	19	1	2	43	2.2
<b>TOTAL</b>	<b>20-0</b>	<b>192/9.6</b>	<b>16-49</b>	<b>.327</b>	<b>2-12</b>	<b>.167</b>	<b>9-17</b>	<b>.529</b>	<b>3</b>	<b>22</b>	<b>25</b>	<b>1.3</b>	<b>10</b>	<b>0</b>	<b>21</b>	<b>19</b>	<b>1</b>	<b>2</b>	<b>43</b>	<b>2.2</b>

## SINGLE-GAME HIGHS [all-time ranking]:

Points: 9, at Arizona -- 1/13/19

Rebounds: 7, CSUN -- 12/29/18

Assists: 3, 4 times

Steals: 1, Washington -- 1/18/19; UCLA -- 1/6/19

Blocks: 1, Washington St. -- 1/20/19

FG made: 3, at Arizona -- 1/13/19; Idaho -- 11/11/18; Idaho -- 11/11/18

FG attempts: 7, Washington -- 1/18/19

3FG made: 1, at Arizona -- 1/13/19; Idaho -- 11/11/18; Idaho -- 11/11/18

3FG attempts: 4, Idaho -- 11/11/18; Idaho -- 11/11/18

FT made: 2, at Arizona -- 1/13/19; Washington St. -- 1/20/19; vs American -- 11/24/18

FT attempts: 3, vs American -- 11/24/18

### Carrington, DiJonai

Season	gp-gs	min/avg	Total		3-Point		F-Throws			Rebounds				Scoring						
			fg-fga	pct	fg-fga	pct	ft-fta	pct	off	def	tot	avg	pf	fo	ast	to	blk	stl	pts	avg
2016-17	35-0	274/7.8	35-79	.443	5-21	.238	11-19	.579	21	59	80	2.3	36	0	14	24	3	19	86	2.5
2017-18	32-7	721/22.5	107-267	.401	30-107	.280	39-57	.684	51	127	178	5.6	65	0	58	69	7	46	283	8.8
2018-19	20-20	554/27.7	92-202	.455	22-64	.344	66-92	.717	33	122	155	7.8	33	0	34	45	3	25	272	13.6
<b>TOTAL</b>	<b>87-27</b>	<b>1549/17.8</b>	<b>234-548</b>	<b>.427</b>	<b>57-192</b>	<b>.297</b>	<b>116-168</b>	<b>.690</b>	<b>105</b>	<b>308</b>	<b>413</b>	<b>4.7</b>	<b>134</b>	<b>0</b>	<b>106</b>	<b>138</b>	<b>13</b>	<b>90</b>	<b>641</b>	<b>7.4</b>

## SINGLE-GAME HIGHS [all-time ranking]:

Points: 33, at Tennessee -- 12/18/18

Rebounds: 22, UC Riverside -- 11/17/17; UC Riverside -- 11/17/17

Assists: 5, 5 times

Steals: 4, at USC -- 1/19/18

Blocks: 1, 14 times

FG made: 11, UCLA -- 1/6/19; at Tennessee -- 12/18/18

FG attempts: 18, UCLA -- 1/6/19

3FG made: 4, at Tennessee -- 12/18/18

3FG attempts: 8, 5 times

FT made: 12, vs FGCU -- 11/23/18

FT attempts: 15, vs FGCU -- 11/23/18

## Stanford Women's Basketball Individual Career History

### Coffee, Shannon

Season	gp-gs	min/avg	Total		3-Point		F-Throws		Rebounds				Scoring							
			fg-fga	pct	fg-fga	pct	ft-fta	pct	off	def	tot	avg	pf	fo	ast	to	blk	stl	pts	avg
2015-16	12-0	45/3.8	9-21	.429	0-2	.000	3-13	.231	3	10	13	1.1	3	0	1	7	1	0	21	1.8
2016-17	20-0	86/4.3	17-27	.630	1-4	.250	9-17	.529	4	17	21	1.1	9	0	3	10	3	2	44	2.2
2017-18	27-2	112/4.1	12-38	.316	7-20	.350	1-2	.500	5	19	24	0.9	12	0	6	14	4	3	32	1.2
2018-19	20-0	157/7.9	11-28	.393	4-15	.267	3-4	.750	10	18	28	1.4	9	0	15	6	4	5	29	1.5
<b>TOTAL</b>	<b>79-2</b>	<b>400/5.1</b>	<b>49-114</b>	<b>.430</b>	<b>12-41</b>	<b>.293</b>	<b>16-36</b>	<b>.444</b>	<b>22</b>	<b>64</b>	<b>86</b>	<b>1.1</b>	<b>33</b>	<b>0</b>	<b>25</b>	<b>37</b>	<b>12</b>	<b>10</b>	<b>126</b>	<b>1.6</b>

## SINGLE-GAME HIGHS [all-time ranking]:

Points: 14, at Baylor -- 12/3/17

Rebounds: 7, vs Wichita St. -- 11/25/16

Assists: 3, at Utah -- 1/27/19; UNLV -- 12/16/17

Steals: 2, at Arizona State -- 1/11/19

Blocks: 1, 13 times

FG made: 5, vs Wichita St. -- 11/25/16; at Baylor -- 12/3/17

FG attempts: 11, at Baylor -- 12/3/17

3FG made: 4, at Baylor -- 12/3/17

3FG attempts: 8, at Baylor -- 12/3/17

FT made: 3, vs Northeastern -- 11/24/16; vs Wichita St. -- 11/25/16

FT attempts: 10, CSU Bakersfield -- 12/22/15

### Dodson, Maya

Season	gp-gs	min/avg	Total		3-Point		F-Throws		Rebounds				Scoring							
			fg-fga	pct	fg-fga	pct	ft-fta	pct	off	def	tot	avg	pf	fo	ast	to	blk	stl	pts	avg
2017-18	33-4	372/11.3	51-103	.495	0-0	.000	13-33	.394	32	35	67	2.0	38	1	5	26	27	2	115	3.5
2018-19	12-1	257/21.4	47-85	.553	0-0	.000	13-26	.500	27	23	50	4.2	26	0	16	10	19	6	107	8.9
<b>TOTAL</b>	<b>45-5</b>	<b>629/14.0</b>	<b>98-188</b>	<b>.521</b>	<b>0-0</b>	<b>.000</b>	<b>26-59</b>	<b>.441</b>	<b>59</b>	<b>58</b>	<b>117</b>	<b>2.6</b>	<b>64</b>	<b>1</b>	<b>21</b>	<b>36</b>	<b>46</b>	<b>8</b>	<b>222</b>	<b>4.9</b>

## SINGLE-GAME HIGHS [all-time ranking]:

Points: 16, CSUN -- 12/29/18

Rebounds: 9, at Tennessee -- 12/18/18

Assists: 6, San Francisco -- 11/15/18; San Francisco -- 11/15/18

Steals: 2, UC Davis -- 11/7/18; UC Davis -- 11/07/18

Blocks: 4, San Francisco -- 11/15/18; Western Illinois -- 12/18/17; San Francisco -- 11/15/18

FG made: 8, CSUN -- 12/29/18

FG attempts: 17, CSUN -- 12/29/18

FT made: 3, Baylor -- 12/15/18; at Buffalo -- 12/21/18

FT attempts: 5, San Francisco -- 11/15/18; at Gonzaga -- 12/2/18; San Francisco -- 11/15/18

### Fingall, Nadia

Season	gp-gs	min/avg	Total		3-Point		F-Throws		Rebounds				Scoring							
			fg-fga	pct	fg-fga	pct	ft-fta	pct	off	def	tot	avg	pf	fo	ast	to	blk	stl	pts	avg
2016-17	36-8	419/11.6	67-132	.508	2-13	.154	19-37	.514	42	51	93	2.6	52	0	22	30	13	13	155	4.3
2017-18	34-0	398/11.7	41-92	.446	13-31	.419	18-26	.692	32	75	107	3.1	52	1	19	22	13	16	113	3.3
2018-19	12-12	244/20.3	40-80	.500	5-17	.294	11-21	.524	28	31	59	4.9	23	0	20	16	5	5	96	8.0
<b>TOTAL</b>	<b>82-20</b>	<b>1061/12.9</b>	<b>148-304</b>	<b>.487</b>	<b>20-61</b>	<b>.328</b>	<b>48-84</b>	<b>.571</b>	<b>102</b>	<b>157</b>	<b>259</b>	<b>3.2</b>	<b>127</b>	<b>1</b>	<b>61</b>	<b>68</b>	<b>31</b>	<b>34</b>	<b>364</b>	<b>4.4</b>

## SINGLE-GAME HIGHS [all-time ranking]:

Points: 24, vs FGCU -- 11/23/18

Rebounds: 8, 5 times

Assists: 5, vs FGCU -- 11/23/18

Steals: 3, Utah -- 2/12/17

Blocks: 2, 6 times

FG made: 11, vs FGCU -- 11/23/18

FG attempts: 14, vs FGCU -- 11/23/18

3FG made: 2, 4 times

3FG attempts: 4, vs American -- 11/24/18; at Baylor -- 12/3/17

FT made: 4, at Arizona -- 1/1/17

FT attempts: 5, Idaho -- 11/11/18; at George Washington -- 12/21/16; Idaho -- 11/11/18

## Stanford Women's Basketball Individual Career History

### Hull, Lacie

Season	gp-gs	min/avg	Total		3-Point		F-Throws		Rebounds				Scoring							
			fg-fga	pct	fg-fga	pct	ft-fa	pct	off	def	tot	avg	pf	fo	ast	to	blk	stl	pts	avg
2018-19	20-14	516/25.8	37-98	.378	22-60	.367	13-15	.867	12	35	47	2.4	33	0	42	18	7	33	109	5.5
TOTAL	20-14	516/25.8	37-98	.378	22-60	.367	13-15	.867	12	35	47	2.4	33	0	42	18	7	33	109	5.5

## SINGLE-GAME HIGHS [all-time ranking]:

Points: 14, at Tennessee -- 12/18/18

Rebounds: 8, USC -- 1/4/19

Assists: 6, UCLA -- 1/6/19; at Hawaii -- 11/25/18

Steals: 7, vs American -- 11/24/18

Blocks: 2, at Hawaii -- 11/25/18

FG made: 5, at Tennessee -- 12/18/18

FG attempts: 10, Washington -- 1/18/19

3FG made: 4, at Tennessee -- 12/18/18

3FG attempts: 8, Washington -- 1/18/19

FT made: 4, at Gonzaga -- 12/2/18

FT attempts: 4, at Utah -- 1/27/19; at Gonzaga -- 12/2/18

### Hull, Lexie

Season	gp-gs	min/avg	Total		3-Point		F-Throws		Rebounds				Scoring							
			fg-fga	pct	fg-fga	pct	ft-fa	pct	off	def	tot	avg	pf	fo	ast	to	blk	stl	pts	avg
2018-19	11-3	236/21.5	24-60	.400	10-28	.357	10-12	.833	24	32	56	5.1	22	0	8	11	4	11	68	6.2
TOTAL	11-3	236/21.5	24-60	.400	10-28	.357	10-12	.833	24	32	56	5.1	22	0	8	11	4	11	68	6.2

## SINGLE-GAME HIGHS [all-time ranking]:

Points: 17, Idaho -- 11/11/18; Idaho -- 11/11/18

Rebounds: 11, UC Davis -- 11/7/18; UC Davis -- 11/07/18

Assists: 3, San Francisco -- 11/15/18; San Francisco -- 11/15/18

Steals: 4, UC Davis -- 11/7/18; UC Davis -- 11/07/18

Blocks: 2, Idaho -- 11/11/18; Idaho -- 11/11/18

FG made: 6, Idaho -- 11/11/18; Idaho -- 11/11/18

FG attempts: 12, Idaho -- 11/11/18; Idaho -- 11/11/18

3FG made: 5, Idaho -- 11/11/18; Idaho -- 11/11/18

3FG attempts: 10, Idaho -- 11/11/18; Idaho -- 11/11/18

FT made: 3, at Utah -- 1/27/19

FT attempts: 4, at Utah -- 1/27/19

### Jerome, Alyssa

Season	gp-gs	min/avg	Total		3-Point		F-Throws		Rebounds				Scoring							
			fg-fga	pct	fg-fga	pct	ft-fa	pct	off	def	tot	avg	pf	fo	ast	to	blk	stl	pts	avg
2017-18	34-1	337/9.9	28-70	.400	9-31	.290	4-6	.667	11	25	36	1.1	27	0	14	22	3	1	69	2.0
2018-19	20-7	317/15.9	27-69	.391	8-24	.333	14-18	.778	16	46	62	3.1	33	0	15	14	7	2	76	3.8
TOTAL	54-8	654/12.1	55-139	.396	17-55	.309	18-24	.750	27	71	98	1.8	60	0	29	36	10	3	145	2.7

## SINGLE-GAME HIGHS [all-time ranking]:

Points: 9, at Utah -- 1/27/19; at California -- 1/31/19

Rebounds: 8, UC Davis -- 11/07/18; UC Davis -- 11/7/18

Assists: 3, at California -- 1/31/19

Steals: 1, at USC -- 1/19/18; at Hawaii -- 11/25/18; at Buffalo -- 12/21/18

Blocks: 2, San Francisco -- 11/15/18; San Francisco -- 11/15/18; UNLV -- 12/16/17

FG made: 4, at Utah -- 1/27/19

FG attempts: 8, at Utah -- 1/27/19

3FG made: 2, 4 times

3FG attempts: 4, vs Kent State -- 11/23/17; at California -- 1/31/19; vs Kent State -- 11/23/17

FT made: 4, at Hawaii -- 11/25/18

FT attempts: 6, at Hawaii -- 11/25/18

## Stanford Women's Basketball Individual Career History

### Moschkau, Estella

Season	gp-gs	min/avg	Total		3-Point		F-Throws		Rebounds				pf	fo	ast	to	blk	stl	Scoring	
			fg-fga	pct	fg-fga	pct	ft-fa	pct	off	def	tot	avg							pts	avg
2017-18	23-0	49/2.1	4-9	.444	3-7	.429	1-2	.500	2	2	4	0.2	4	0	2	0	0	0	12	0.5
2018-19	12-0	50/4.2	5-7	.714	4-6	.667	0-0	.000	1	5	6	0.5	6	0	3	6	0	2	14	1.2
<b>TOTAL</b>	<b>35-0</b>	<b>99/2.8</b>	<b>9-16</b>	<b>.563</b>	<b>7-13</b>	<b>.538</b>	<b>1-2</b>	<b>.500</b>	<b>3</b>	<b>7</b>	<b>10</b>	<b>0.3</b>	<b>10</b>	<b>0</b>	<b>5</b>	<b>6</b>	<b>0</b>	<b>2</b>	<b>26</b>	<b>0.7</b>

## SINGLE-GAME HIGHS [all-time ranking]:

Points: 5, San Francisco -- 11/15/18; San Francisco -- 11/15/18  
 Rebounds: 2, at Arizona -- 1/13/19; at Arizona -- 1/5/18; CSUN -- 12/29/18  
 Assists: 1, 7 times  
 Steals: 2, at Hawaii -- 11/25/18  
 FG made: 2, San Francisco -- 11/15/18; San Francisco -- 11/15/18  
 FG attempts: 2, 6 times  
 3FG made: 1, 10 times  
 3FG attempts: 2, CSU Bakersfield -- 11/19/17; CSU Bakersfield -- 11/19/17; CSUN -- 12/29/18  
 FT made: 1, Arizona -- 1/28/18  
 FT attempts: 2, Arizona -- 1/28/18

### Romano, Alexa

Season	gp-gs	min/avg	Total		3-Point		F-Throws		Rebounds				pf	fo	ast	to	blk	stl	Scoring	
			fg-fga	pct	fg-fga	pct	ft-fa	pct	off	def	tot	avg							pts	avg
2015-16	17-0	59/3.5	4-10	.400	2-5	.400	2-2	1.000	1	4	5	0.3	2	0	3	4	2	0	12	0.7
2016-17	22-0	132/6.0	8-25	.320	5-14	.357	3-6	.500	3	16	19	0.9	5	0	12	10	0	8	24	1.1
2017-18	29-8	277/9.6	28-78	.359	12-41	.293	8-11	.727	5	22	27	0.9	11	0	15	15	2	12	76	2.6
2018-19	10-0	42/4.2	3-12	.250	2-10	.200	3-3	1.000	1	2	3	0.3	4	0	2	2	0	0	11	1.1
<b>TOTAL</b>	<b>78-8</b>	<b>510/6.5</b>	<b>43-125</b>	<b>.344</b>	<b>21-70</b>	<b>.300</b>	<b>16-22</b>	<b>.727</b>	<b>10</b>	<b>44</b>	<b>54</b>	<b>0.7</b>	<b>22</b>	<b>0</b>	<b>32</b>	<b>31</b>	<b>4</b>	<b>20</b>	<b>123</b>	<b>1.6</b>

## SINGLE-GAME HIGHS [all-time ranking]:

Points: 13, CSU Bakersfield -- 11/19/17; CSU Bakersfield -- 11/19/17; at San Francisco -- 11/29/17  
 Rebounds: 5, Yale -- 12/28/16  
 Assists: 3, Cal Poly -- 11/11/16; UNLV -- 12/16/17  
 Steals: 2, 4 times  
 Blocks: 1, 4 times  
 FG made: 5, vs Belmont -- 11/24/17; at San Francisco -- 11/29/17  
 FG attempts: 11, UC Riverside -- 11/17/17; UC Riverside -- 11/17/17  
 3FG made: 3, CSU Bakersfield -- 11/19/17; CSU Bakersfield -- 11/19/17; at San Francisco -- 11/29/17  
 3FG attempts: 7, UC Riverside -- 11/17/17; UC Riverside -- 11/17/17  
 FT made: 2, 7 times  
 FT attempts: 2, 11 times

### Smith, Alanna

Season	gp-gs	min/avg	Total		3-Point		F-Throws		Rebounds				pf	fo	ast	to	blk	stl	Scoring	
			fg-fga	pct	fg-fga	pct	ft-fa	pct	off	def	tot	avg							pts	avg
2015-16	34-0	400/11.8	67-155	.432	20-60	.333	29-44	.659	28	52	80	2.4	63	1	13	43	24	5	183	5.4
2016-17	38-3	735/19.3	133-286	.465	19-60	.317	62-90	.689	66	141	207	5.4	88	4	34	42	61	25	347	9.1
2017-18	35-35	995/28.4	198-418	.474	35-116	.302	43-81	.531	92	154	246	7.0	96	2	41	88	62	45	474	13.5
2018-19	20-20	565/28.3	157-291	.540	54-117	.462	55-73	.753	40	126	166	8.3	56	3	46	48	49	23	423	21.2
<b>TOTAL</b>	<b>127-58</b>	<b>2695/21.2</b>	<b>555-1150</b>	<b>.483</b>	<b>128-353</b>	<b>.363</b>	<b>189-288</b>	<b>.656</b>	<b>226</b>	<b>473</b>	<b>699</b>	<b>5.5</b>	<b>303</b>	<b>10</b>	<b>134</b>	<b>221</b>	<b>196</b>	<b>98</b>	<b>1427</b>	<b>11.2</b>

## SINGLE-GAME HIGHS [all-time ranking]:

Points: 34, Washington St. -- 1/20/19  
 Rebounds: 16, vs Ohio State -- 11/25/17  
 Assists: 5, at Buffalo -- 12/21/18  
 Steals: 6, at California -- 2/17/18  
 Blocks: 7, at Arizona -- 1/13/19  
 FG made: 14, vs Ohio State -- 11/25/17  
 FG attempts: 24, Western Illinois -- 12/18/17; at California -- 2/17/18  
 3FG made: 6, vs Dayton -- 11/28/15  
 3FG attempts: 11, at California -- 2/17/18  
 FT made: 7, UC Davis -- 11/07/18; UC Davis -- 11/7/18  
 FT attempts: 8, Baylor -- 12/15/18; Cornell -- 12/19/15; at California -- 2/16/17

## Stanford Women's Basketball Individual Career History

### Snizek, Marta

Season	gp-gs	min/avg	Total		3-Point		F-Throws		Rebounds				Scoring							
			fg-fga	pct	fg-fga	pct	ft-fta	pct	off	def	tot	avg	pf	fo	ast	to	blk	stl	pts	avg
2015-16	35-9	656/18.7	35-99	.354	4-17	.235	28-42	.667	8	48	56	1.6	27	0	109	63	1	21	102	2.9
2016-17	38-9	948/24.9	56-149	.376	6-20	.300	54-75	.720	6	100	106	2.8	64	0	169	93	3	51	172	4.5
2017-18	35-32	971/27.7	56-156	.359	20-59	.339	61-90	.678	7	115	122	3.5	68	1	150	78	3	38	193	5.5
<b>TOTAL</b>	<b>108-50</b>	<b>2575/23.8</b>	<b>147-404</b>	<b>.364</b>	<b>30-96</b>	<b>.313</b>	<b>143-207</b>	<b>.691</b>	<b>21</b>	<b>263</b>	<b>284</b>	<b>2.6</b>	<b>159</b>	<b>1</b>	<b>428</b>	<b>234</b>	<b>7</b>	<b>110</b>	<b>467</b>	<b>4.3</b>

## SINGLE-GAME HIGHS [all-time ranking]:

Points: 13, Arizona State -- 1/26/18; at Washington -- 2/23/18

Rebounds: 10, USC -- 12/31/17

Assists: 13, vs Washington -- 3/4/16

Steals: 6, Oregon State -- 1/8/17

Blocks: 1, 7 times

FG made: 5, Arizona State -- 1/26/18; vs Notre Dame -- 3/25/16

FG attempts: 12, vs Belmont -- 11/24/17

3FG made: 3, at Arizona State -- 1/7/18; Utah -- 2/9/18

3FG attempts: 8, vs Belmont -- 11/24/17

FT made: 6, UC Riverside -- 11/17/17; UC Riverside -- 11/17/17; vs USC -- 3/2/18

FT attempts: 9, Tennessee -- 12/16/15

### Williams, Kiana

Season	gp-gs	min/avg	Total		3-Point		F-Throws		Rebounds				Scoring							
			fg-fga	pct	fg-fga	pct	ft-fta	pct	off	def	tot	avg	pf	fo	ast	to	blk	stl	pts	avg
2017-18	35-26	899/25.7	128-309	.414	71-185	.384	36-44	.818	4	54	58	1.7	38	0	67	40	5	30	363	10.4
2018-19	20-20	666/33.3	108-243	.444	48-131	.366	24-32	.750	0	48	48	2.4	22	0	99	52	1	22	288	14.4
<b>TOTAL</b>	<b>55-46</b>	<b>1565/28.5</b>	<b>236-552</b>	<b>.428</b>	<b>119-316</b>	<b>.377</b>	<b>60-76</b>	<b>.789</b>	<b>4</b>	<b>102</b>	<b>106</b>	<b>1.9</b>	<b>60</b>	<b>0</b>	<b>166</b>	<b>92</b>	<b>6</b>	<b>52</b>	<b>651</b>	<b>11.8</b>

## SINGLE-GAME HIGHS [all-time ranking]:

Points: 26, California -- 2/15/18

Rebounds: 6, vs FGCU -- 11/23/18; Utah -- 2/9/18

Assists: 10, UCLA -- 1/6/19

Steals: 4, Washington -- 1/18/19; California -- 2/15/18

Blocks: 1, 7 times

FG made: 9, Washington -- 1/18/19; vs Arizona State -- 3/3/18

FG attempts: 20, at Colorado -- 1/25/19

3FG made: 6, vs Arizona State -- 3/3/18

3FG attempts: 11, 5 times

FT made: 7, California -- 2/15/18

FT attempts: 9, California -- 2/15/18

### Wilson, Anna

Season	gp-gs	min/avg	Total		3-Point		F-Throws		Rebounds				Scoring							
			fg-fga	pct	fg-fga	pct	ft-fta	pct	off	def	tot	avg	pf	fo	ast	to	blk	stl	pts	avg
2016-17	6-0	48/8.0	6-13	.462	4-8	.500	1-3	.333	0	6	6	1.0	4	0	5	7	0	3	17	2.8
2017-18	21-2	224/10.7	24-81	.296	20-69	.290	2-4	.500	1	22	23	1.1	22	0	8	13	1	10	70	3.3
2018-19	16-3	165/10.3	18-42	.429	7-28	.250	7-8	.875	6	17	23	1.4	13	0	14	9	0	14	50	3.1
<b>TOTAL</b>	<b>43-5</b>	<b>437/10.2</b>	<b>48-136</b>	<b>.353</b>	<b>31-105</b>	<b>.295</b>	<b>10-15</b>	<b>.667</b>	<b>7</b>	<b>45</b>	<b>52</b>	<b>1.2</b>	<b>39</b>	<b>0</b>	<b>27</b>	<b>29</b>	<b>1</b>	<b>27</b>	<b>137</b>	<b>3.2</b>

## SINGLE-GAME HIGHS [all-time ranking]:

Points: 21, vs Ohio State -- 11/25/17

Rebounds: 6, Western Illinois -- 12/18/17

Assists: 5, Washington -- 1/18/19

Steals: 3, Washington -- 1/18/19; Western Illinois -- 12/18/17

Blocks: 1, CSU Bakersfield -- 11/19/17; CSU Bakersfield -- 11/19/17

FG made: 7, vs Ohio State -- 11/25/17

FG attempts: 17, Western Illinois -- 12/18/17

3FG made: 7, vs Ohio State -- 11/25/17

3FG attempts: 15, Western Illinois -- 12/18/17

FT made: 2, 5 times

FT attempts: 3, at Arizona -- 1/1/17













**TV/RADIO ROSTER**



**#2**  
**SHANNON COFFEE**  
 C • 6-5 • SR  
 DAYTON, OHIO  
 CENTERVILLE



**#3**  
**ANNA WILSON**  
 G • 5-9 • JR  
 SEATTLE, WASH.  
 BELLEVUE



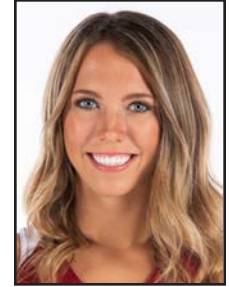
**#4**  
**NADIA FINGALL**  
 F • 6-3 • JR  
 NAVARRE, FLA.  
 CHOCTAWHATCHEE



**#10**  
**ALYSSA JEROME**  
 F • 6-3 • SO  
 TORONTO, CANADA  
 HARBORD COLLEGIATE



**#11**  
**ALANNA SMITH**  
 F • 6-4 • SR  
 MELBOURNE, AUSTRALIA  
 WESLEY COLLEGE



**#12**  
**LEXIE HULL**  
 F • 6-0 • FR  
 SPOKANE, WASH.  
 CENTRAL VALLEY



**#13**  
**MARTA SNIEZEK**  
 G • 5-8 • SR  
 MCLEAN, VA.  
 NATIONAL CATHEDRAL [D.C.]



**#14**  
**MIKAELA BREWER**  
 G • 5-10 • JR  
 BARRIE, ONTARIO, CANADA  
 INNISDALE SECONDARY



**#15**  
**MAYA DODSON**  
 F • 6-3 • SO  
 ALPHARETTA, GA.  
 ST. FRANCIS



**#20**  
**ESTELLA MOSCHKAU**  
 F • 6-1 • SO  
 MADISON, WIS.  
 EDGEWOOD



**#21**  
**DIJONAI CARRINGTON**  
 G • 5-11 • JR  
 SAN DIEGO, CALIF.  
 HORIZON CHRISTIAN



**#23**  
**KIANA WILLIAMS**  
 G • 5-8 • SO  
 SAN ANTONIO, TEXAS  
 KAREN WAGNER



**#24**  
**LACIE HULL**  
 F • 6-1 • FR  
 SPOKANE, WASH.  
 CENTRAL VALLEY



**#54**  
**JENNA BROWN**  
 G • 5-10 • FR  
 ATLANTA, GA.  
 THE LOVETT SCHOOL



**TARA VANDERVEER**  
 HEAD COACH  
 33RD YEAR



**KATE PAYE**  
 ASSOCIATE HEAD COACH  
 12TH YEAR



**TEMPIE BROWN**  
 ASSISTANT COACH  
 SIXTH YEAR



**LINDY LA ROCQUE**  
 ASSISTANT COACH  
 SECOND YEAR