



GOSTANFORD.COM • #GOSTANFORD



2018-19 SCHEDULE AND RESULTS

NOVEMBER

7	UC Davis	W, 71-43
11	Idaho	W, 115-71
15	San Francisco	W, 96-62
18	Ohio State (P12N)	canceled
23	vs. FGCU (1)	W, 88-65
24	vs. American (1)	W, 71-49
25	at Hawaii (1)	W, 81-59

DECEMBER

2	at Gonzaga	L, 73-79
15	#3/4 Baylor (P12N)	W, 68-63
18	at #9/8 Tennessee (SECN)	W, 95-85
21	at Buffalo (ESPN+)	W, 62-55
29	CSUN	W, 69-43

JANUARY

4	USC * (P12N)	W, 72-64
6	UCLA * (P12N)	W, 86-80
11	at #19/19 Arizona State * (P12N)	W, 72-65
13	at Arizona * (P12N)	W, 78-48
18	Washington * (P12N)	7 p.m.
20	Washington State * (P12N)	noon
25	at Colorado * (P12N)	7 p.m. MT
27	at Utah *	noon MT
31	at California * (P12N)	8 p.m.

FEBRUARY

2	California * (P12N)	4 p.m.
8	Oregon State * (P12N)	6 p.m.
10	Oregon * (ESPN2)	1 p.m.
15	at UCLA * (P12N)	6 p.m.
17	at USC * (P12N)	noon
22	Arizona *	7 p.m.
24	Arizona State * (P12N)	1 p.m.

MARCH

1	at Washington State * (P12N)	7 p.m.
3	at Washington * (P12N)	2 p.m.
7-10	Pac-12 Tournament (2)	TBD

(1) - Rainbow Wahine Showdown; Honolulu, Hawaii

(2) - Pac-12 Tournament; Las Vegas, Nev.

\* - Pac-12 game;

All times local and subject to change;

Home games in Bold;

[#/#] - Indicates national ranking (AP/USA Today)

(P12N) - Game televised on Pac-12 Networks

(ESPN2/SECN) - Game televised on ESPN family of networks

Athletic Communications

Director ..... John Cantalupi  
 Cell Phone ..... (650) 924-8304  
 E-Mail ..... johncan@stanford.edu

**THE GAME:** Off to its best start in five seasons, No. 6 Stanford (14-1, 4-0) hosts Washington (8-9, 1-4) on Friday, Jan. 18 at 7 p.m. Kate Scott and Layshia Clarendon have the call on Pac-12 Networks and Tim Swartz will handle the radio broadcast on GoStanford.com.

**THE RUNDOWN:** At 14-1, Stanford is off to its best start since 2013-14 (22-1) ... The Cardinal has won 18 in a row at home ... Tara VanDerveer is two wins away from No. 900 at Stanford ... Stanford is the only school that has multiple players with multiple 30-point games this season (Smith and Carrington) ... Alanna Smith's 30-point, 13-rebound, five-assist, three-block performance at Buffalo was just the fourth for a player in a true road game since 2000 ... DiJonai Carrington's 33-point, 13-rebound, four 3-pointer effort against Tennessee was just the second for a player in the past 20 years against a ranked opponent ... Stanford is one of two schools in the nation with a pair of top-10 wins ... The Cardinal is 22nd in the country in scoring offense (79.8) and 17th in field goal percentage (.466) ... Stanford is 13th in the country in 3-point makes per game (9.9) and 10th in 3-point percentage (.387) ... Alanna Smith is the only player in the country averaging 19.7 points, 7.6 rebounds, 2.5 assists and 2.4 blocks per game ... DiJonai Carrington is averaging 17.4 points and 10.0 rebounds in the last seven games ... Alanna Smith is averaging 22.0 points, 10.0 rebounds and 3.7 blocks in the last six ... Haley Jones, the nation's consensus No. 1 recruit, announced her commitment on Nov. 28, the first top player to sign with Stanford since Chiney Ogwumike in Nov. 2009.

STANFORD AT A GLANCE

Game 16

Overall Record .....	14-1
Pac-12 Record .....	4-0
Home Record .....	7-0
Road Record .....	5-1
Neutral Record .....	2-0

HEAD COACH TARA VANDERVEER

Stanford Record (33rd year) .....	898-192
Career Record (40th year) .....	1,050-243
All-Time vs. Washington .....	49-16

SERIES HISTORY

All-Time vs. Washington .....	50-17
At Stanford .....	27-4
At Washington .....	20-10
Streak .....	Stanford, 3
Last Stanford Win .....	2/23/18 (86-79 @ WASH)
Last Washington Win .....	3/27/16 (85-76 @ NCAA)

**VS. WASHINGTON:** Stanford is 50-17 all-time against Washington dating back to Dec. 13, 1980 and 27-4 against the Huskies at home. The Cardinal has won 21 of the last 24 overall in the series and 17 in a row in Maples Pavilion. Stanford hasn't lost a home game to UW since Feb. 18, 1999 (74-62). Alanna Smith averaged 17.0 points on 50.0 percent shooting (14-of-28) and 8.0 rebounds in the Cardinal's two wins over the Huskies last season. DiJonai Carrington averaged 9.5 points and didn't miss a 3-pointer, going 4-for-4.

STANFORD PROBABLE STARTERS

No.	Player	Pos.	Ht.	Yr.	PPG	RPG	APG
10	Alyssa Jerome	F	6-3	So.	3.1	3.1	0.6
11	Alanna Smith	F	6-4	Sr.	19.7	7.6	2.4 (BPG)
21	DiJonai Carrington	G	5-11	Jr.	13.4	7.3	1.6
23	Kiana Williams	G	5-8	So.	13.9	2.4	5.0
24	Lacie Hull	G	6-1	Fr.	5.1	2.9	2.1

STANFORD OFF THE BENCH

No.	Player	Pos.	Ht.	Yr.	PPG	RPG	APG
2	Shannon Coffee	C	6-5	Sr.	1.9	1.3	0.6
3	Anna Wilson	G	5-9	Jr.	2.8	1.5	0.7
4	Nadia Fingall	F	6-3	Jr.	8.0	4.9	1.7
12	Lexie Hull	G	6-0	Fr.	7.3	5.7	0.5
13	Marta Sniezek	G	5-8	Sr.	--	--	--
14	Mikaela Brewer	G	5-10	Jr.	1.3	0.6	0.0
15	Maya Dodson	F	6-3	So.	9.0	4.2	1.7 (BPG)
20	Estella Moschkau	G	6-1	So.	1.6	0.6	0.3
54	Jenna Brown	G	5-10	Fr.	2.3	1.5	1.3

**QUICK FACTS**

**The University**

Location ..... Stanford, Calif.  
 Founded..... 1891  
 Enrollment..... 16,424 (7,056 undergraduate)  
 Nickname..... Cardinal  
 Colors..... Cardinal and White  
 Affiliation ..... NCAA Division I  
 Conference ..... Pac-12  
 President ..... Marc Tessier-Lavigne  
 Provost..... Persis Drell  
 Director of Athletics..... Bernard Muir  
 Faculty Representative ..... Jeff Koseff  
 Senior Women's Administrator..... Beth Goode  
 Athletic Department Phone ..... 650-723-4591  
 Ticket Office Phone ..... 800-STANFORD  
 Home Facility..... Maples Pavilion  
 Capacity ..... 7,233  
 Web Site ..... www.gostanford.com

**Stanford Women's Basketball History**

First Year ..... 1974-75 (45 seasons)  
 All-Time Record ..... 1,074-330 (.765)  
 All-Time Pac-12 (since 1986-87) ..... 504-75 (.870)  
 NCAA Championships ..... 2 (1990, 1992)  
 NCAA Tournament Appearances ..... 32 (86-30)  
 Last NCAA Tournament Appearance ..... 2018  
 NCAA Final Four Appearances ..... 13  
 Last NCAA Final Four Appearance ..... 2017

**Staff Information**

Head Coach ..... Tara VanDerveer (33rd season)  
 Alma Mater ..... Indiana, 1975  
 Stanford Record ..... 898-192/33 seasons  
 Career Record..... 1,050-243/40 seasons  
 Associate Head Coach..... Kate Paye (12th season)  
 Alma Mater ..... Stanford, 1995  
 Assistant Coach ..... Tempie Brown (sixth season)  
 Alma Mater ..... Michigan, 1990  
 Assistant Coach ..... Lindy La Rocque (second season)  
 Alma Mater ..... Stanford, 2012  
 Operations..... Eileen Roche (Ohio Wesleyan '81)  
 Administrator..... Amy Tucker (Ohio State, '82)  
 Video Coordinator..... Hana Potter (Washington St. '14)  
 Athletic Trainer..... Katelin Knox (Santa Clara '09)  
 Sports Performance ..... Brittany Keil (Holy Cross '07)  
 Basketball Office Phone..... (650) 723-0284

**Team Information**

Letterwinners Returning/Lost .....12/2  
 Starters Returning/Lost .....3/2  
 Newcomers.....3  
 2017-18 Record.....24-11  
 Home .....14-2  
 Away .....6-5  
 Neutral.....4-4  
 2017-18 Conference Record .....14-3  
 Finish ..... 2nd

**NEWS AND NOTES »**

- At 14-1, Stanford is off to its best 15-game start since it began the 2013-14 season 22-1.
- The Cardinal started the year with six consecutive victories, something it hadn't done since winning its first 11 games in 2012-13.
- Stanford entered conference play with a 10-1 record (.909), the first time in five years it suffered just one nonconference defeat.
- The Cardinal's Nov. 18 home contest against Ohio State was canceled due to smoke from the devastating wildfires in Butte County that had compromised the air quality throughout the Bay Area.
- Stanford is currently No. 6 in the AP Top 25 and No. 2 in the NCAA RPI.
- Since 2007-08, the Cardinal owns a conference home record of 95-6 and a Pac-12 road record of 86-14.
- Stanford's 181 conference wins the past 11 seasons are the most in the nation (Green Bay - 180).
- Stanford's all-time Pac-12 record is 504-75 and 150 wins clear of the next closest team (UW - 337).
- The Cardinal was 14-of-14 at the line in Friday's 72-65 win over No. 19 Arizona State, a program record for makes without a miss from the stripe. Stanford had previously gone 13-for-13 against Seattle on Feb. 29, 2012 and Cal on Feb. 11, 2005.
- Stanford was a combined 23-of-24 (.958) on free throws across its two wins last weekend. The Cardinal had entered the trip shooting 67.0 percent from the line (150-of-224).
- Stanford leads the conference and is 21st in the country in blocks per game (5.3).
- Tara VanDerveer is two wins away from No. 900 at Stanford and would be the fifth DI coach, men's or women's, with that many at a single school (Pat Summitt, Geno Auriemma, Mike Krzyzewski, Jim Boeheim).

**HOME COOKIN' »**

- Stanford is in the midst of an 18-game winning streak in Maples Pavilion, the eighth longest active stretch in the country and the program's longest since it went 28 straight from Jan. 18, 2013 until an 87-81 overtime loss to No. 10 Texas on Nov. 20, 2014.
- Last season, the Cardinal was the only Pac-12 team undefeated at home in conference (9-0).
- Stanford has won 14 consecutive Pac-12 home games.
- Stanford's last home loss was to No. 7 Tennessee on Dec. 21, 2017 (83-71) and its last conference loss at home was to No. 15 UCLA on Feb. 6, 2017 (85-76).
- The Cardinal has won 21 in a row at home over unranked Pac-12 teams. Its last such loss was Feb. 22, 2015, when it was beaten by Cal, 63-53.

**INJURY BUG »**

- A number of players have missed significant stretches of time for Stanford.
- Junior Nadia Fingall, who had started each of the Cardinal's first 12 games and averaged 8.0 points and 4.9 rebounds, will miss the remainder of the season after tearing the ACL in her left knee in a game against USC on Jan. 4
- Senior Marta Sniezek has yet to play this year after undergoing offseason ulnar collateral ligament (UCL) surgery on her right hand/thumb. She started 32 games last season.
- Freshman Lexie Hull returned in Stanford's win over UCLA after missing the previous nine games with a left foot injury. She had started the first three games of the year.
- Sophomore Maya Dodson, arguably one of the conference's most improved players, has missed the last four games with a left foot injury.

**2018-19 STANFORD ROSTER**

No.	Player	Pos.	Ht.	Yr.	Major	Hometown (High School)
2	Shannon Coffee	C	6-5	Sr.	Human Biology	Dayton, Ohio (Centerville)
3	Anna Wilson	G	5-9	Jr.	Art Practice	Seattle, Wash. (Bellevue)
4	Nadia Fingall	F	6-3	Jr.	Human Biology	Navarre, Fla. (Choctawhatchee)
10	Alyssa Jerome	F	6-3	So.	Undeclared	Toronto, Ontario, Canada (Harbord Collegiate)
11	Alanna Smith	F	6-4	Sr.	Psychology	Melbourne, Victoria, Australia (Wesley College)
12	Lexie Hull	F	6-0	Fr.	Undeclared	Spokane, Wash. (Central Valley)
13	Marta Sniezek	G	5-8	Sr.	American Studies	McLean, Va. (National Cathedral [D.C.]
14	Mikaela Brewer	G	5-10	Jr.	Human Biology	Barrie, Ontario, Canada (Innisdale Secondary)
15	Maya Dodson	F	6-3	So.	Undeclared	Alpharetta, Ga. (St. Francis)
20	Estella Moschkau	F	6-1	So.	Undeclared	Madison, Wis. (Edgewood)
21	DiJonai Carrington	G	5-11	Jr.	Psychology • African & African American Studies	San Diego, Calif. (Horizon Christian)
23	Kiana Williams	G	5-8	So.	Undeclared	San Antonio, Texas (Karen Wagner)
24	Lacie Hull	F	6-1	Fr.	Undeclared	Spokane, Wash. (Central Valley)
54	Jenna Brown	G	5-10	Fr.	Undeclared	Atlanta, Ga. (The Lovett School)

<b>TEMPIE</b> Brown (TEMP-ee)	Estella <b>MOSCHKAU</b> (MOSS-cow)
<b>DIJONAI</b> Carrington (dijon-NAY)	<b>ALANNA</b> Smith (uh-LAN-uh)
Nadia <b>FINGALL</b> (FING-gull)	Marta <b>SNIEZEK</b> (SNEEZE-ick)
	<b>TARA VANDERVEER</b> (TAR-uh van-DER-veer)

**STANFORD'S RECORD WHEN**

Category	H	R	N	O
Scoring First	4-0	5-1	1-0	10-1
Opponent Scores First	3-0	0-0	1-0	4-0
Lead at Half	5-0	5-0	2-0	12-0
Trail at Half	2-0	0-1	0-0	2-1
Tied at Half	0-0	0-0	0-0	0-0
Overtime	0-0	0-0	0-0	0-0
vs. Top 25	1-0	2-0	0-0	3-0
Decided by 1-4 Points	0-0	0-0	0-0	0-0
Decided by 5-9 Points	3-0	2-1	0-0	5-1
Decided by 10+ Points	4-0	3-0	2-0	9-0
Scoring 100+	1-0	0-0	0-0	1-0
Scoring 90-99	1-0	1-0	0-0	2-0
Scoring 80-89	1-0	1-0	1-0	3-0
Scoring 70-79	2-0	2-1	1-0	5-1
Scoring 60-69	2-0	1-0	0-0	3-0
Scoring 50-59	0-0	0-0	0-0	0-0
Scoring 40-49	0-0	0-0	0-0	0-0
Opp. Scoring 90-99	0-0	0-0	0-0	0-0
Opp. Scoring 80-89	1-0	1-0	0-0	2-0
Opp. Scoring 70-79	1-0	0-1	0-0	1-1
Opp. Scoring 60-69	3-0	1-0	1-0	5-0
Opp. Scoring 50-59	0-0	2-0	0-0	2-0
Opp. 49 or Fewer	2-0	1-0	1-0	4-0
50%-plus FG Pct.	2-0	3-0	1-0	6-0
40-49.9% FG Pct.	4-0	1-1	1-0	6-1
39.9%-minus FG Pct.	1-0	1-0	0-0	2-0
Opp. 50%-plus FG Pct.	0-0	0-1	0-0	0-1
Opp. 40-49.9% FG Pct.	2-0	2-0	0-0	4-0
Opp. 39.9%-minus	5-0	3-0	2-0	10-0
Better FG% than Opp.	7-0	5-0	2-0	14-0
FG% is Equal	0-0	0-0	0-0	0-0
Opp. Better FG%	0-0	0-1	0-0	0-1
80%-plus FT Pct.	1-0	2-0	0-0	3-0
70-79% FT Pct.	2-0	3-0	1-0	6-0
69%-minus FT Pct.	4-0	0-1	1-0	5-1
Better FT% than Opp.	5-0	4-0	0-0	9-0
FT% is Equal	0-0	0-0	0-0	0-0
Opp. Better FT%	2-0	1-1	2-0	5-1
Outrebounding Opp.	4-0	4-0	2-0	10-0
Rebounds are Equal	0-0	0-0	0-0	0-0
Outrebounded by Opp.	3-0	1-1	0-0	4-1
Fewer TO than Opp.	4-0	1-1	1-0	6-1
Turnovers are Equal	0-0	0-0	0-0	0-0
More TO than Opp.	3-0	4-0	1-0	8-0
6 in Double Figures	1-0	0-0	0-0	1-0
5 in Double Figures	0-0	1-0	0-0	1-0
4 in Double Figures	1-0	0-0	0-0	1-0
3 in Double Figures	5-0	2-1	2-0	9-1
2 in Double Figures	0-0	2-0	0-0	2-0
1 in Double Figures	0-0	0-0	0-0	0-0
Bench Scores More	2-0	4-0	1-0	7-0
Opp. Bench Scrs. More	4-0	1-1	1-0	6-1
Wearing Black	0-0	3-1	1-0	4-1
Wearing White	6-0	0-0	1-0	7-0
Wearing Cardinal	0-0	2-0	0-0	2-0

**RECORDS SET ON ROCKY TOP »**

- On the 30th anniversary of the first meeting in their storied rivalry, Stanford went on the road and beat then-No. 9 Tennessee in Knoxville, 95-85, on Dec. 18.
- In the first top-10 matchup between the schools since 2013, the Cardinal collected its third win against the Lady Vols in Thompson-Boling Arena. Its previous road victories in Knoxville came on Dec. 22, 2012 (73-60) and Dec. 15, 1996 (82-65).
- Stanford shot 14-of-24 (.583) from 3-point range, an opponent record for Thompson-Boling Arena and a record-tying number of makes from deep against the Lady Vols all-time.
- The Cardinal's 95 points were the most against Tennessee in Knoxville in 13 seasons and just two shy of the opponent record in Thompson-Boling Arena. Texas beat the Lady Vols 97-78 on Dec. 9, 1987.
- Stanford shot 55 percent overall (33-of-60) to score its 95 points, a program record for scoring on the road against a top-10 team.
- DiJonai Carrington led five Cardinal in double figures with a career-high 33 points and 13-rebounds for her third career double-double. Carrington was 11-of-15 (.733) from the floor and 4-of-5 (.800) from deep and became just the second player in the last 20 years to have 33 points, 13 rebounds and four made 3-pointers against a ranked opponent. Missouri's Evan Unrau had 40/15/4 against No. 8 Kansas State on Feb. 22, 2014, a game that went into double-overtime.

**RESUME BUILDERS »**

- Coupled with a Dec. 15 68-63 home victory over then-No. 3 Baylor, Stanford beat a pair of top-10 teams in the span of four days, something it last did eight years ago when it beat No. 4 Xavier, 89-52, on Dec. 28, 2010 and No. 1 UConn, 71-59, on Dec. 30, 2010 to end the Huskies' then-record 90-game winning streak. Both of those victories were at home.
- Stanford and Notre Dame are the only schools in the nation with a pair of top-10 wins.
- The win against the Lady Bears was the Cardinal's first in the regular season against a top-five team since it ended No. 1 UConn's 47-game winning streak in overtime, 88-86, on Nov. 17, 2014.
- Stanford is now 9-1 in its last 10 home game against top-five opponents.
- The 6-foot-5 Shannon Coffee set season highs with nine points and 19 minutes and made three of her four 3-point attempts against Baylor. The senior has made 12 from deep in her career and seven have come against Baylor. She was 4-of-8 last season in an 81-57 loss in Waco.
- Coupled with Alanna Smith's 5-of-9 effort from behind the arc, the Cardinal's two tallest players were a combined 8-of-13 (.615) from distance.
- Baylor, which entered the game leading the nation in field goal percentage (.557), shot just 34.9 percent (22-of-63) against the Cardinal, its lowest since losing 88-69 to Notre Dame in the Elite Eight on March 31, 2014 (.338).
- Kalani Brown (16.4 ppg) and Lauren Cox (12.3 ppg), who came in averaging nearly 30 combined points per game, together went for just seven points on just 3-of-11 shooting (.273). Brown came into the day leading the NCAA's active players in field goal percentage (.648) made only two of her seven attempts from the floor, the third-lowest percentage of her career when attempting at least five shots.

**MARKED OFFENSIVE IMPROVEMENT »**

- The Cardinal is 22nd in the country in scoring offense (79.8) and 18th in scoring margin (+17.7).
- Stanford hasn't averaged more than 75.0 points per game since 2013-14 and has averaged 68.7 (2017-18), 68.8 (2015-16) and 69.3 (2014-15) in three of the last four years. Those are three of the five lowest scoring offenses for a Tara VanDerveer team at Stanford, behind 1985-86 (66.6) and 1986-87 (67.8).
- Stanford is 17th nationally in field goal percentage (.466) and 27th in assist-to-turnover ratio (1.20).
- Those categories are just a couple of many where the Cardinal has seen a marked improvement year-over-year. Last season, Stanford was 87th in field goal percentage (.424) and 126th in assist-to-turnover ratio (0.93).

**SHARP SHOOTERS »**

- Stanford is 13th in the country, averaging 9.9 3-point makes per game and 10th in 3-point percentage, making 38.7 percent.
- Stanford's 16 3-pointers on Nov. 11 against Idaho tied a program single-game record also achieved at UCLA on Feb. 24, 2002 and at Washington on Feb. 24, 2001.
- Entering the season, Stanford had made 14 3-pointers in a game 16 times in 1,389 games (1.2 percent). This year's Cardinal has already done it three times in 15 games against Idaho (16), San Francisco (15) and Tennessee (14).
- The Cardinal made 31.9 percent of its attempts from behind the arc last season, the second-worst percentage in program history. Stanford also was a program-low 42.4 percent from the floor overall in 2017-18.
- Stanford won that game against Idaho 115-71, its fifth-highest point total ever and most since tying a school record with 122 against Cal State Fullerton on Dec. 10, 1994.

**VANDERVEER'S HEAD COACHING CAREER**

Year	School	Overall	Post.
1978-79	Idaho	17-8	
1979-80	Idaho	25-6	AIAW Championships
1980-81	Ohio State	17-15	---
1981-82	Ohio State	20-7	NCAA First Round
1982-83	Ohio State	23-5	---
1983-84	Ohio State	22-7	NCAA First Round
1984-85	Ohio State	28-3	NCAA Elite 8
1985-86	Stanford	13-15	---
1986-87	Stanford	14-14	---
1987-88	Stanford	27-5	NCAA Sweet 16
1988-89	Stanford	28-3	NCAA Elite 8
1989-90	Stanford	32-1	NCAA Champions
1990-91	Stanford	26-6	NCAA Final Four
1991-92	Stanford	30-3	NCAA Champions
1992-93	Stanford	26-6	NCAA Sweet 16
1993-94	Stanford	25-6	NCAA Elite 8
1994-95	Stanford	30-3	NCAA Final Four
1995-96	Stanford	---	USA Head Coach
1996-97	Stanford	34-2	NCAA Final Four
1997-98	Stanford	21-6	NCAA First Round
1998-99	Stanford	18-12	NCAA First Round
1999-00	Stanford	21-9	NCAA Second Round
2000-01	Stanford	19-11	NCAA Second Round
2001-02	Stanford	32-3	NCAA Sweet 16
2002-03	Stanford	27-5	NCAA Second Round
2003-04	Stanford	27-7	NCAA Elite 8
2004-05	Stanford	32-3	NCAA Elite 8
2005-06	Stanford	26-8	NCAA Elite 8
2006-07	Stanford	29-5	NCAA Second Round
2007-08	Stanford	35-4	NCAA Runner-Up
2008-09	Stanford	33-5	NCAA Final Four
2009-10	Stanford	36-2	NCAA Runner-Up
2010-11	Stanford	33-3	NCAA Final Four
2011-12	Stanford	35-2	NCAA Final Four
2012-13	Stanford	33-3	NCAA Sweet 16
2013-14	Stanford	33-4	NCAA Final Four
2014-15	Stanford	26-10	NCAA Sweet 16
2015-16	Stanford	27-8	NCAA Elite 8
2016-17	Stanford	32-6	NCAA Final Four
2017-18	Stanford	24-11	NCAA Sweet 16
2018-19	Stanford	14-1	

**1,050-243****COACHING HIGHLIGHTS**

- The second-winningest coach in women's college basketball history and was the second to reach 1,000 career wins (Feb. 3, 2017 vs. USC).
- Possesses the sixth-highest career winning percentage (.812) among Division I women's basketball coaches all-time.

**HONORS AND AWARDS**

- Naismith Memorial Basketball Hall of Fame ('11)
- Women's Basketball Hall of Fame ('02)
- Two NCAA Championships (1990, 1992)
- Head of the 1996 U.S. Olympic Team (Gold)
- 60-0 record with USA Olympic Team in 1995-96
- 88-8 record (.917) as USA Basketball Head Coach
- 12 NCAA Final Fours
- 22 regular-season Pac-12 titles
- Four-time National Coach of the Year
- 15-time Pac-12 Coach of the Year
- Two-time Big Ten Coach of the Year

**FROM DOWN UNDER »**

- Alanna Smith is on every major watch list, including the Naismith Trophy, Wade Trophy, John R. Wooden Award, Katrina McClain Award and Senior CLASS Award and also was selected to the pre-season All-Pac-12 Team as voted on by the media who regularly cover the conference.
- A two-time Pac-12 Player of the Week this season (Dec. 17 and Jan. 14) and the espnW and USBWA National Player of the Week from Dec. 17, Smith is shooting 54.5 percent from the field (108-of-198), 48.8 percent from behind the arc (39-of-80) and averaging a team-high 19.7 points per game to go with 7.6 rebounds.
- She is the only player in the nation shooting better than 54 percent from the floor and 48 percent from deep using NCAA minimums of five made field goals per game and two made 3-pointers per game. Shatori Walker-Kimbrough is the only player to do that for an entire season over the past 20 years when she shot 54.3 percent from the floor and 54.5 percent on 3-pointers for Maryland in 2015-16.
- Elena Delle Donne is the only player 6'4" and taller over the past two decades to shoot better than 40 percent from 3-point range when she made 41.3 percent as a freshman at Delaware in 2009-10 (NCAA minimum of two made 3-pointers per game).
- Smith, who has double-doubles in four of her last six games, is the only player in the country averaging 19.7 points, 7.6 rebounds, 2.5 assists and 2.4 blocks per game this season. Bella Alarie of Princeton is the only other player averaging at least 19/7/2/2.
- Smith is averaging 22.0 points, 10.0 rebounds and 3.7 blocks in those last six games.
- Smith is fourth in the conference and 44th in the country in field goal percentage, first in the Pac-12 and fourth in the country in 3-point percentage, fifth in the league and 28th nationally in scoring and first in the conference and 22nd in the country in blocks per game.
- She is 26th in school history in scoring (1,300) and fifth in blocks (183).
- Smith has made 113 career 3-pointers, more than any other player her height since 2015-16. Six-foot-4 Courtney Zezza on Saint Francis has made 89 over the past four years.
- The senior had 30 points, 13 rebounds five assists and three blocks in a 62-55 win at Buffalo on Dec. 21 to become just the fourth player since 2000 to put together a line of 30/13/5/3 in a true road game.
- Jennie Simms had 41/13/6/3 for Old Dominion against Florida Atlantic on Feb. 4, 2017, Jerica Coley had 30/14/5/4 for FIU against South Florida on March 17, 2012 and Jessica Davenport had 34/16/6/3 for Ohio State against Iowa on Jan. 12, 2006.

**WATCH WILLIAMS »**

- Kiana Williams is also on watch lists for the Naismith Trophy and Ann Meyers Drysdale Award.
- The sophomore is second on the team in scoring (13.9 points per game) and put in 20+ in each of Stanford's last two home games, the first back-to-back 20-point games of her career.
- Williams had her first career double-double with 21 points and 10 assists in the Jan. 6 win against UCLA. It was Stanford's first 20-point, 10-assist double-double since Jeanette Pohlen had 21 and 12 in a win over USC on Jan. 22, 2011.
- It was also the Cardinal's first individual 10-assist effort since Marta Sniezek had that many in the 2016-17 season opener against Cal Poly on Nov. 11, 2016.
- Williams is also averaging 5.0 assists per game, which is eighth in the conference. No Stanford player has averaged 4.5 assists in a season since Jeanette Pohlen in 2010-11 (4.8) and no one has averaged 5.0 since Nicole Powell in 2001-02 (6.3).

**VANDERVEER'S CAREER MILESTONES**

<b>Win #1</b>	Dec. 1, 1978 Idaho vs. Northern Montana, 70-68	<b>Win #1 at Stanford</b>	Nov. 22, 1985 vs. Hawaii, 68-65
<b>Win #100</b>	Feb. 27, 1983 Ohio State vs. Michigan, 74-60	<b>Win #100 at Stanford</b>	Jan. 27, 1990 vs. Arizona State, 90-63
<b>Win #200</b>	Feb. 12, 1988 Stanford vs. Washington, 70-66	<b>Win #200 at Stanford</b>	Dec. 18, 1993 vs. SW Missouri St., 74-63
<b>Win #300</b>	Dec. 20, 1991 Stanford vs. Southern Illinois, 82-63	<b>Win #300 at Stanford</b>	Feb. 14, 1998 vs. USC, 91-63
<b>Win #400</b>	March 16, 1995 Stanford vs. UC Irvine (NCAA), 88-55	<b>Win #400 at Stanford</b>	Nov. 30, 2002 vs. Kansas State, 63-57
<b>Win #500</b>	Nov. 26, 2000 Stanford vs. Pacific, 73-65	<b>Win #500 at Stanford</b>	Feb. 11, 2006 at California, 55-46
<b>Win #600</b>	March 20, 2004 Stanford vs. Missouri, 68-44	<b>Win #600 at Stanford</b>	March 14, 2009 vs. UCLA, 73-47 (at Los Angeles, Calif.)
<b>Win #700</b>	Dec. 28, 2007 Stanford vs. Washington State, 105-47	<b>Win #700 at Stanford</b>	Feb. 25, 2012 vs. Utah, 69-42
<b>Win #800</b>	Dec. 22, 2010 Stanford at San Francisco, 100-45	<b>Win #800 at Stanford</b>	March 21, 2015 vs. CSUN, 73-60
<b>Win #900</b>	Nov. 27, 2013 Stanford vs. FGCU, 83-59 (Puerto Vallarta, Mexico)		
<b>Win #1,000</b>	Feb. 3, 2017 Stanford vs. USC, 58-42		

**IN THE POLLS**

**ASSOCIATED PRESS TOP 25**  
(Released January 14)

School	Record	Points
1 Notre Dame (23)	16-1	736
2 Baylor (6)	13-1	706
2 Connecticut (1)	14-1	706
4 Louisville	15-1	652
5 Oregon	15-1	621
<b>6 Stanford</b>	<b>14-1</b>	<b>615</b>
7 Mississippi State	15-1	571
8 North Carolina State	17-0	542
9 Maryland	15-1	505
10 Oregon State	14-2	482
11 Texas	14-2	452
12 Syracuse	14-2	427
13 Gonzaga	16-1	369
14 Marquette	14-3	352
15 South Carolina	12-4	273
16 Kentucky	15-3	243
17 Michigan State	12-3	217
18 Iowa State	13-3	202
19 Arizona State	12-4	192
20 Rutgers	13-3	163
20 Tennessee	12-4	163
22 Iowa	11-4	146
23 Minnesota	12-3	76
24 DePaul	12-5	57
25 Indiana	15-2	56

**OTHERS RECEIVING VOTES:** Florida State 54; Utah 36; Texas A&M 20; Butler 20; Missouri 19; California 17; Georgia 17; Central Michigan 12; Drake 9; South Dakota 7; UCF 4; Auburn 4; Clemson 3; Purdue 3; Arizona 1.

**USA TODAY COACHES TOP 25**  
(Released January 15)

School	Record	Points
1 Notre Dame (26)	16-1	792
2 Connecticut (4)	14-1	754
3 Baylor (2)	13-1	730
4 Louisville	15-1	708
5 Oregon	15-1	676
6 Mississippi State	16-1	630
<b>7 Stanford</b>	<b>14-1</b>	<b>616</b>
8 North Carolina State	17-0	591
9 Maryland	15-1	540
10 Oregon State	14-2	505
11 Texas	14-2	478
12 Syracuse	14-2	449
13 Marquette	14-3	409
14 Gonzaga	16-1	373
15 Kentucky	15-3	267
16 Arizona State	12-4	263
17 Tennessee	12-4	250
18 Iowa	12-4	247
19 Iowa State	13-3	2 18
20 South Carolina	12-4	201
21 Florida State	14-2	154
22 Michigan State	12-4	97
23 Rutgers	13-3	77
24 DePaul	12-5	63
25 Minnesota	12-4	48

**OTHERS RECEIVING VOTES:** Missouri 45; Texas A&M 31; California 31; Indiana 29; Drake 21; Central Michigan 20; Miami (FL) 17; UCF 17; UAB 10; Arizona 9; Utah 8; Butler 7; Purdue 5; New Mexico 4; Troy 4; Tulane 2; South Alabama 2; Virginia Tech 1; South Dakota 1.

**CARRINGTON CLUTCH »**

- DiJonai Carrington has pulled down 10 or more rebounds in four of the last seven games and is averaging 17.4 points and 10.0 rebounds in those seven while shooting 47.7 percent from the floor (41-of-86) and 41.2 percent from deep (14-of-34).
- The junior has a pair of 30-point efforts in those last seven against Tennessee (33) and UCLA (30) and Stanford is the only school in the nation that has multiple players with multiple 30-point games this season. Alanna Smith scored 30 at Hawaii on Nov. 25 and 30 at Buffalo on Dec. 21.

**FOUR TO THE FARM »**

- Stanford bolstered an already strong recruiting class for next season with the addition of the nation's consensus No. 1 recruit, Haley Jones (Santa Cruz, Calif./Archbishop Mitty), who committed on Nov. 28.
- Jones joined the earlier signings of top-50, five-star talents Fran Belibi (Aurora, Colo./Regis Jesuit), Hannah Jump (Los Altos Hills, Calif./Pinewood School) and Ashten Prechtel (Colorado Springs, Colo./Discovery Canyon) in Stanford's class, which is ranked second nationally by espnW HoopGurlz.
- Jones is the first No. 1 prospect to sign with Stanford since Chiney Ogwumike came to The Farm as the top player in the country in Nov. 2009.

**SO INTERNATIONAL »**

- Alanna Smith, the program's first international student, became the sixth Stanford player to appear in a FIBA World Cup in helping Australia to a silver medal in late September. The senior was one of two Stanford players at the tournament in Tenerife, Spain along with alumna Nneka Ogwumike (United States) and was a late arrival to campus for the fall quarter. Classes started on September 24.
- Brown and the USA Basketball U18 National Team won gold at the FIBA Americas U18 Championship in Mexico City in early August. The freshman averaged 7.5 points on 57.1 percent shooting, 2.8 assists and 2.3 rebounds in six games. She had her best performance in the semifinals against Colombia, going for a team-high 17 points on 6-of-7 shooting, including hitting three of her four 3-point attempts.
- Jerome was the youngest player on Canada's Senior Women's National Team roster that participated in a four-game exhibition series in China and Japan from August 1-7.

**STANFORD BY THE NUMBERS**

DOUBLE-DOUBLES	2018-19	CAREER	LED IN REBOUNDING (+TIES)	2018-19	CAREER
Alanna Smith	4	14	Alanna Smith	9	26
DiJonai Carrington	2	4	DiJonai Carrington	4	12
Lexie Hull	1	1	Nadia Fingall	2	7
Kiana Williams	1	1	Marta Sniezek	0	4
			Lexie Hull	1	1
			Kiana Williams	0	1
DOUBLE-FIGURE POINTS	2018-19	CAREER	LED IN ASSISTS (+TIES)	2018-19	CAREER
Alanna Smith	14	59	Marta Sniezek	0	61
Kiana Williams	11	30	Kiana Williams	11	17
DiJonai Carrington	10	23	DiJonai Carrington	1	6
Nadia Fingall	4	15	Nadia Fingall	1	3
Marta Sniezek	0	9	Jenna Brown	1	1
Anna Wilson	1	4	Maya Dodson	1	1
Shannon Coffee	0	2	Lacie Hull	1	1
Maya Dodson	5	7	Alyssa Jerome	0	1
Lacie Hull	2	2	Alanna Smith	0	1
Lexie Hull	2	2	Anna Wilson	0	1
20-PLUS POINTS GAMES	2018-19	CAREER	<b>STANFORD SUPERLATIVES</b>		
Alanna Smith	6	15	Points .....	33, D. Carrington at Tennessee	
Kiana Williams	3	6		33, A. Smith at Hawaii	
DiJonai Carrington	2	4	Field Goals Made .....	12, A. Smith at Buffalo	
Nadia Fingall	1	1		12, A. Smith at Hawaii	
Anna Wilson	0	1	Field Goal Att. ....	22, A. Smith at Buffalo	
DOUBLE-FIGURE REBOUNDS	2018-19	CAREER	3-Point FG Made .....	5, A. Smith vs. Baylor	
Alanna Smith	5	17		5, K. Williams vs. FGCU	
DiJonai Carrington	3	5		5, A. Smith vs. San Francisco	
Lexie Hull	1	1		5, Lexie Hull vs. Idaho	
Marta Sniezek	0	1	3-Point FG Att.....	11, K. Williams vs. USC	
DOUBLE-FIGURE ASSISTS	2018-19	CAREER	Free Throws Made .....	12, D. Carrington vs. FGCU	
Marta Sniezek	0	2	Free Throw Att. ....	15, D. Carrington vs. FGCU	
Kiana Williams	1	1	Rebounds.....	14, A. Smith at Arizona	
LED TEAM IN SCORING (+TIES)	2018-19	CAREER	Assists .....	10, K. Williams vs. UCLA	
Alanna Smith	8	28	Steals .....	7, Lacie Hull vs. American	
Kiana Williams	4	12	Blocked Shots.....	7, A. Smith at Arizona	
DiJonai Carrington	1	6			
Shannon Coffee	0	2			
Maya Dodson	1	1			
Nadia Fingall	1	1			

**THE LAST TIME STANFORD****BEAT A NO. 1 TEAM:**

11/17/14 vs. No. 1 Connecticut (88-86 [OT])

**BEAT A TOP 25 TEAM:**

1/11/19 at No. 19 Arizona State (72-65)

**BEAT A TOP 5 TEAM:**

12/15/18 vs. No. 3 Baylor (68-63)

**BEAT A TOP 25 TEAM ON THE ROAD:**

1/11/19 at No. 19 Arizona State (72-65)

**SCORED 100+ POINTS:**

11/11/18 vs. Idaho (115)

**ALLOWED 100+ POINTS:**

12/27/00 at Oklahoma (102)

**SCORED FEWER THAN 50 POINTS:**

3/5/17 vs. Oregon State (48)

**ALLOWED FEWER THAN 50 POINTS:**

1/13/19 at Arizona (48)

**SCORED FEWER THAN 40 POINTS:**

1/24/16 at UCLA (36)

**ALLOWED FEWER THAN 40 POINTS:**

12/16/17 vs. UNLV (33)

**SHOT 60+ PERCENT:**

11/25/16 vs. Wichita State (.623)

**OPPONENT SHOT 59+ PERCENT:**

12/16/10 at DePaul (.596)

**SHOT LESS THAN 30 PERCENT:**

12/3/17 at Baylor (.294)

**OPPONENT SHOT LESS THAN 30 PERCENT:**

1/13/19 at Arizona (.274)

**FIVE CARDINAL IN DOUBLE-FIGURES:**

12/18/18 at Tennessee

(D. Carrington 33, A. Smith 16, K. Williams 16,

Lacie Hull 14, M. Dodson 10)

**TWO PLAYERS WITH 20+ POINTS:**

1/6/19 vs. UCLA

(D. Carrington 30, A. Smith 24, K. Williams 21)

**THREE PLAYERS WITH 20+ POINTS:**

1/6/19 vs. UCLA

(D. Carrington 30, A. Smith 24, K. Williams 21)

**PLAYER SCORED 40+ POINTS:**

12/20/11, Nnemkadi Ogumike vs. Tennessee (42)

**PLAYER SCORED 30+ POINTS:**

1/6/19, DiJonai Carrington vs. UCLA (30)

**PLAYER MADE 10+ FIELD GOALS:**

1/6/19, DiJonai Carrington vs. UCLA (11)

**PLAYER MADE 5+ 3-POINTERS:**

12/15/18, Alanna Smith vs. Baylor (5)

**PLAYER MADE 10+ FREE THROWS:**

11/23/18, DiJonai Carrington vs. FGCU (12)

**PLAYER HAD 10+ ASSISTS:**

1/6/19, Kiana Williams vs. UCLA (10)

**PLAYER HAD 15+ REBOUNDS:**

1/12/18, Kaylee Johnson vs. Washington State (15)

**PLAYER HAD 5+ BLOCKED SHOTS:**

1/13/19, Alanna Smith at Arizona (7)

**PLAYER HAD 5+ STEALS:**

11/24/18, Lacie Hull vs. American (7)

**PLAYER HAD A DOUBLE-DOUBLE:**

1/13/19, Alanna Smith at Arizona (20 pts, 14 reb)

**TWO PLAYERS HAD A DOUBLE-DOUBLE:**

1/6/19, Alanna Smith (24 pts, 11 reb)

and Kiana Williams (21 pts, 10 ast) vs. UCLA

**PLAYER HAD A TRIPLE-DOUBLE:**

3/18/02, N. Powell vs. Tulane (16 pts, 10 reb, 10 ast)

**STANFORD HIGHS/LOWS**

Most Points .....	115 vs. Idaho (11/11/18)
Fewest Points .....	62 at Buffalo (12/21/18)
Most 1st Quarter Points.....	28 vs. Idaho (11/11/18)
Fewest 1st Quarter Points.....	15 at Hawaii (11/25/18)
Most 2nd Quarter Points .....	28 vs. Idaho (11/11/18)
Fewest 2nd Quarter Points .....	11 at Buffalo (12/21/18)
Most 3rd Quarter Points .....	40 vs. Idaho (11/11/18)
Fewest 3rd Quarter Points .....	9 at Gonzaga (12/2/18)
Most 4th Quarter Points .....	32 at Gonzaga (12/2/18)
Fewest 4th Quarter Points .....	10 vs. Baylor (12/15/18)
Best FG Pct.....	56.6% (30-of-53) at Hawaii (11/25/18)
Worst FG Pct.....	38.3% (23-of-60) vs. Baylor (12/15/18)
Most 3-Pt. FGs Made.....	16 vs. Idaho (11/11/18)
Fewest 3-Pt. FGs Made .....	5, two times [last vs. CSUN (12/29/18)]
Most 3-Pt. FGs Attempted .....	41 vs. Idaho (11/11/18)
Fewest 3-Pt. FGs Attempted.....	20 at Buffalo (12/21/18)
Best 3-Pt. FG Pct. (min. five attempts).....	58.3% (14-of-24) at Tennessee (12/18/18)
Worst 3-Pt. FG Pct.....	23.8% (5-of-21) vs. CSUN (12/29/18)
Most Free Throws Made .....	17 vs. FGCU (11/23/18)
Fewest Free Throws Made.....	4 vs. CSUN (12/29/18)
Most Free Throws Attempted.....	26 vs. FGCU (11/23/18)
Fewest Free Throws Attempted .....	6 vs. CSUN (12/29/18)
Best Free Throw Pct. (min. five attempts) .....	100.0% (14-of-14) at Arizona State (1/11/19)
Worst Free Throw Pct. ....	42.9% (9-of-21) vs. Baylor (12/15/18)
Most Rebounds.....	53 vs. CSUN (12/29/18)
Fewest Rebounds .....	24 at Gonzaga (12/2/18)
Best Rebound Margin.....	+29 vs. Idaho (11/11/18)
Worst Rebound Margin.....	-14 at Gonzaga (12/2/18)
Most Assists .....	26 vs. Idaho (11/11/18)
Fewest Assists.....	10 vs. UC Davis (11/7/18)
Most Turnovers.....	21 vs. UC Davis (11/7/18)
Fewest Turnovers .....	9 vs. San Francisco (11/15/18)
Best Turnover Margin.....	+8 at Gonzaga (12/2/18)
Worst Turnover Margin.....	-12 at Tennessee (12/18/18)
Most Blocked Shots .....	11 vs. San Francisco (11/15/18)
Fewest Blocked Shots .....	1 vs. FGCU (11/23/18)
Most Steals.....	13 at Hawaii (11/25/18)
Fewest Steals .....	3, two times [last vs. USC (1/4/19)]

**OPPONENT HIGHS/LOWS**

Most Points .....	85 by Tennessee (12/18/18)
Fewest Points .....	43, two times [last by CSUN (12/29/18)]
Most 1st Quarter Points.....	24 by UCLA (1/6/19)
Fewest 1st Quarter Points.....	4 by CSUN (12/29/18)
Most 2nd Quarter Points .....	22 by FGCU (11/23/18)
Fewest 2nd Quarter Points .....	4 by Arizona (1/13/19)
Most 3rd Quarter Points .....	25, two times [last by Arizona State (1/11/19)]
Fewest 3rd Quarter Points .....	10 vs. UC Davis (11/7/18)
Most 4th Quarter Points .....	23, two times [last by UCLA (1/6/19)]
Fewest 4th Quarter Points .....	9 vs. UC Davis (11/7/18)
Best FG Pct.....	54.2% (26-of-48) by Gonzaga (12/2/18)
Worst FG Pct.....	22.6% (14-of-62) by UC Davis (11/7/18)
Most 3-Pt. FGs Made.....	15 by Idaho (11/11/18)
Fewest 3-Pt. FGs Made .....	3, two times [last by Baylor (12/15/18)]
Most 3-Pt. FGs Attempted .....	38 by FGCU (11/23/18)
Fewest 3-Pt. FGs Attempted.....	7 by Baylor (12/15/18)
Most FTs Made .....	19 by Gonzaga (12/2/18)
Fewest FTs Made .....	2 by Hawaii (11/25/18)
Most FTs Attempted.....	23, two times [last by Tennessee (12/18/18)]
Fewest FTs Attempted .....	2 by Hawaii (11/25/18)
Most Rebounds .....	44 by Buffalo (12/21/18)
Fewest Rebounds .....	20, two times [last by FGCU (11/23/18)]
Most Assists .....	17 by Hawaii (11/25/18)
Fewest Assists.....	6, two times [last by Arizona (1/13/19)]
Most Turnovers.....	23 by Gonzaga (12/2/18)
Fewest Turnovers .....	8 by Tennessee (12/18/18)
Best Turnover Margin.....	+12 by Tennessee (12/18/18)
Worst Turnover Margin.....	-8 by Gonzaga (12/2/18)
Most Blocked Shots.....	6 by Baylor (12/15/18)
Fewest Blocked Shots .....	0, four times [last by Buffalo (12/21/18)]
Most Steals.....	13 by UC Davis (11/7/18)
Fewest Steals .....	3 by American (11/24/18)

## STANFORD RECORDS

## CAREER SCORING

No.	Player	PTS
1.	Chiney Ogwumike (2011-14)	2,737
2.	Candice Wiggins (2005-08)	2,629
3.	Nnemkadi Ogwumike (2009-12)	2,491
4.	Kate Starbird (1994-97)	2,215
5.	Jayne Appel (2007-10)	2,125
6.	Val Whiting (1990-93)	2,077
7.	Nicole Powell (2001-04)	2,062
8.	Jeanne Ruark Hoff (1979-83)	2,038
9.	Kayla Pedersen (2008-11)	1,941
10.	Trisha Stevens (1988-91)	1,649
11.	Jennifer Azzi (1987-90)	1,634
12.	Katy Steding (1987-90)	1,586
13.	Olympia Scott (1995-98)	1,524
14.	Brooke Smith (2005-07)	1,520
15.	Anita Kaplan (1992-95)	1,509
16.	Lindsey Yamasaki (1999-2002)	1,497
17.	Jeanette Pohlen (2008-11)	1,453
18.	Virginia Sourlis (1983-86)	1,449
19.	Sonja Henning (1988-91)	1,445
20.	Amber Orange (2012-15)	1,426
21.	Louise Smith (1979-82)	1,414
22.	Christy Hedgpeth (1991-94)	1,387
23.	Erica McCall (2014-17)	1,376
24.	Kelley Suminski (2002-05)	1,364
25.	Meg Metzger (1980-83)	1,360
26.	<b>ALANNA SMITH (2016-19)</b>	<b>1,300</b>
27.	Rachel Hemmer (1992-95)	1,289
28.	Vanessa Nygaard (1994-98)	1,279
29.	Julie Zeilstra (1989-91)	1,259
30.	Brittany McPhee (2015-18)	1,250
	Lili Thompson (2014-16)	1,250
32.	Maggie Nelson (1975-78)	1,180
33.	Karlie Samuelson (2014-17)	1,164
34.	Kami Anderson (1985-88)	1,141
35.	Jill Yanke (1986-89)	1,134
36.	Jillian Harmon (2006-09)	1,096
37.	Joslyn Tinkle (2010-13)	1,091
38.	Molly Goodenbour (1990-93)	1,040
39.	Angie Paccione (1979-83)	1,013
40.	Bethany Donaphin (1999-02)	1,010

## CAREER BLOCKS

No.	Player	BLKS
1.	Jayne Appel (2007-10)	273
2.	Chiney Ogwumike (2011-14)	202
3.	Val Whiting (1990-93)	201
4.	Erica McCall (2014-17)	200
5.	<b>ALANNA SMITH (2016-19)</b>	<b>183</b>
6.	Kaylee Johnson (2015-18)	166
7.	Kristen Newlin (2004-07)	163
8.	Joslyn Tinkle (2010-13)	150
9.	Bethany Donaphin (1999-2002)	136
	Cori Enghusen (1999-2002)	136

## CAREER ASSISTS

No.	Player	ASTS
1.	Sonja Henning (1988-91)	757
2.	Jennifer Azzi (1987-90)	751
3.	Milena Flores (1997-2000)	644
4.	Jamila Wideman (1994-97)	585
5.	Nicole Powell (2001-04)	577
6.	Jeanette Pohlen (2008-11)	560
7.	Amber Orange (2012-15)	552
8.	Virginia Sourlis (1983-86)	483
9.	Molly Goodenbour (1990-93)	441
10.	Kate Starbird (1994-97)	437
11.	Candice Wiggins (2005-08)	436
	<b>MARTA SNIJEZEK (2016-19)</b>	<b>428</b>

## SINGLE-GAME STEALS

No.	Player	STLS
1.	Katy Steding at Northwestern (12/3/88)	10
2.	Milena Flores vs. Saint Mary's (12/27/99)	9
3.	Jennifer Azzi vs. North Carolina State (12/19/87)	8
4.	<b>LACIE HULL VS. AMERICAN (11/24/18)</b>	<b>7</b>
	Candice Wiggins vs. Old Dominion (11/24/07)	7
	Brooke Smith at Washington State (1/13/07)	7
	Jamila Wideman at Colorado (12/28/96)	7
	Katy Steding at UCLA (1/7/89)	7
	Jennifer Azzi at Fresno State (12/1/87)	7

## SINGLE-GAME BLOCKS

No.	Player	BLKS
1.	Kristen Newlin at Washington State (1/2/04)	8
2.	<b>ALANNA SMITH AT ARIZONA (11/13/19)</b>	<b>7</b>
	Erica McCall at Utah (2/21/16)	7
	Joslyn Tinkle at South Carolina (12/19/12)	7
	Joslyn Tinkle at UC Davis (11/30/12)	7

## TEAM SINGLE-GAME SCORING

No.	Opponent	PTS
1.	vs. Cal State Fullerton (12/10/94)	122
	vs. Long Beach State (12/8/93)	122
3.	vs. Wisconsin (11/25/88)	119
4.	vs. Arizona (2/23/91)	116
5.	<b>VS. IDAHO (11/11/18)</b>	<b>115</b>
6.	vs. Arkansas (3/24/90)	114
7.	vs. Arizona State (1/13/94)	113
	vs. California (2/1/91)	113
	at Arizona (2/24/90)	113
	vs. Ohio (11/25/89)	113

## TEAM SINGLE-GAME FIELD GOALS

No.	Opponent	FGM
1.	vs. Cal State Fullerton (12/10/94)	51
2.	at Arizona (2/24/90)	47
3.	vs. Long Beach State (12/8/93)	46
4.	<b>VS. IDAHO (11/11/18)</b>	<b>45</b>
	vs. California (2/18/94)	45
	vs. Arkansas (3/24/90)	45
	vs. California (3/2/90)	45
	vs. Oregon (2/25/89)	45
9.	vs. Arizona (3/11/11)	44
	vs. Providence (12/28/94)	44
	vs. Illinois State (3/18/89)	44
	vs. Wisconsin (11/25/88)	44

## TEAM SINGLE-GAME 3-POINTERS

No.	Opponent	3FGM
1.	<b>VS. IDAHO (11/11/18)</b>	<b>16</b>
	at UCLA (2/24/02)	16
	at Washington (2/24/01)	16
4.	<b>VS. SAN FRANCISCO (11/15/18)</b>	<b>15</b>
	at San Francisco (11/29/17)	15
	vs. Missouri State (11/27/15)	15
	at Arizona (1/17/14)	15
	vs. UCLA (1/20/05)	15
	vs. Washington State (1/31/04)	15
	vs. Arizona (1/10/04)	15

**2018-19 Results**

<b>RECORD:</b>	<b>OVERALL</b>	<b>HOME</b>	<b>AWAY</b>	<b>NEUTRAL</b>
ALL GAMES	14-1	7-0	5-1	2-0
CONFERENCE	4-0	2-0	2-0	0-0
NON-CONFERENCE	10-1	5-0	3-1	2-0

<b>DATE</b>	<b>TIME</b>	<b>OPPONENT</b>		<b>SCORE</b>	<b>ATTEND</b>	<b>HIGH POINTS</b>	<b>HIGH REBOUNDS</b>
11/7/18	7:00 p.m.	UC DAVIS	W	71-43	2471	(16) Smith, Alanna	(11) Hull, Lexie
11/11/18	2:00 p.m.	IDAHO	W	115-71	2582	(19) Williams, Kiana (19) Smith, Alanna	(9) Smith, Alanna
11/15/18	7:00 p.m.	SAN FRANCISCO	W	96-62	2077	(21) Williams, Kiana	(7) Smith, Alanna
11/23/18	4:30 p.m.	# vs. FGCU	W	88-65	1346	(24) Fingall, Nadia	(9) Carrington, DiJonai
11/24/18	12:00 p.m.	# vs. American	W	71-49	1268	(25) Smith, Alanna	(8) Smith, Alanna
11/25/18	2:30 p.m.	# at Hawaii	W	81-59	1383	(30) Smith, Alanna	(6) Fingall, Nadia
12/2/18	2:00 p.m.	at Gonzaga		73-79 L	6,000	(18) Williams, Kiana	(7) Smith, Alanna
12/15/18	12:00 p.m.	BAYLOR	W	68-63	3,440	(21) Smith, Alanna	(8) Smith, Alanna
12/18/18	6:00 p.m.	at Tennessee	W	95-85	8,051	(33) Carrington, DiJonai	(13) Carrington, DiJonai
12/21/18	12:00 p.m.	at Buffalo	W	62-55	3,412	(30) Smith, Alanna	(13) Smith, Alanna
12/29/18	2:00 p.m.	CSUN	W	69-43	2,520	(16) Dodson, Maya	(12) Carrington, DiJonai
1/4/19	8:00 p.m.	* USC	W	72-64	2,557	(22) Williams, Kiana	(11) Smith, Alanna
1/6/19	1:00 p.m.	* UCLA	W	86-80	3,231	(30) Carrington, DiJonai	(11) Smith, Alanna
1/11/19	7:00 p.m.	* at Arizona State	W	72-65	2,728	(25) Smith, Alanna	(11) Carrington, DiJonai
1/13/19	12:00 p.m.	* at Arizona	W	78-48	2,686	(20) Smith, Alanna	(14) Smith, Alanna

\* = Pac-12

# = Rainbow Wahine Showdown; Honolulu, Hawaii

<b>ATTENDANCE</b>	<b>GAMES</b>	<b>TOTALS</b>	<b>AVG/GAME</b>
HOME	7	18878	2697
AWAY	6	24260	4043
NEUTRAL	2	2614	1307
TOTAL	15	45752	3050



## 2018-19 Game-by-Game Comparison

	Date	Score	W/L	---TOTAL---		--3-PTRS--		FT-FTA Pct		----REBOUNDS----				PF	A	TO	Blk	Stl	Pts	Avg
				FG-FGA	Pct	3FG-FGA	Pct		Pct	Off	Def	Tot	Avg							
UC Davis	11/7	71-43	W	14-62	.226	8-31	.258	7-13	.538	6	19	25	25.0	17	6	18	3	13	43	43.0
<b>Stanford</b>				<b>26-61</b>	<b>.426</b>	<b>6-24</b>	<b>.250</b>	<b>13-18</b>	<b>.722</b>	<b>12</b>	<b>38</b>	<b>50</b>	<b>50.0</b>	<b>18</b>	<b>10</b>	<b>21</b>	<b>6</b>	<b>12</b>	<b>71</b>	<b>71.0</b>
Idaho	11/11	115-71	W	25-59	.424	15-24	.625	6-13	.462	2	18	20	22.5	20	14	16	2	4	71	57.0
<b>Stanford</b>				<b>45-84</b>	<b>.536</b>	<b>16-41</b>	<b>.390</b>	<b>9-13</b>	<b>.692</b>	<b>20</b>	<b>29</b>	<b>49</b>	<b>49.5</b>	<b>19</b>	<b>26</b>	<b>10</b>	<b>7</b>	<b>8</b>	<b>115</b>	<b>93.0</b>
San Francisco	11/15	96-62	W	20-60	.333	5-16	.313	17-23	.739	13	26	39	28.0	18	8	14	0	4	62	58.7
<b>Stanford</b>				<b>36-70</b>	<b>.514</b>	<b>15-32</b>	<b>.469</b>	<b>9-15</b>	<b>.600</b>	<b>9</b>	<b>25</b>	<b>34</b>	<b>44.3</b>	<b>19</b>	<b>24</b>	<b>9</b>	<b>11</b>	<b>4</b>	<b>96</b>	<b>94.0</b>
FGCU	11/23	88-65	W	23-63	.365	10-38	.263	9-11	.818	3	17	20	26.0	19	9	12	0	8	65	60.2
<b>Stanford</b>				<b>30-58</b>	<b>.517</b>	<b>11-22</b>	<b>.500</b>	<b>17-26</b>	<b>.654</b>	<b>12</b>	<b>35</b>	<b>47</b>	<b>45.0</b>	<b>14</b>	<b>22</b>	<b>16</b>	<b>1</b>	<b>7</b>	<b>88</b>	<b>92.5</b>
American	11/24	71-49	W	17-46	.370	3-12	.250	12-15	.800	4	21	25	25.8	19	10	16	1	3	49	58.0
<b>Stanford</b>				<b>26-62</b>	<b>.419</b>	<b>7-22</b>	<b>.318</b>	<b>12-17</b>	<b>.706</b>	<b>15</b>	<b>25</b>	<b>40</b>	<b>44.0</b>	<b>16</b>	<b>18</b>	<b>12</b>	<b>2</b>	<b>12</b>	<b>71</b>	<b>88.2</b>
Hawaii	11/25	81-59	W	22-54	.407	13-22	.591	2-2	1.000	6	16	22	25.2	19	17	19	1	6	59	58.2
<b>Stanford</b>				<b>30-53</b>	<b>.566</b>	<b>8-21</b>	<b>.381</b>	<b>13-17</b>	<b>.765</b>	<b>8</b>	<b>24</b>	<b>32</b>	<b>42.0</b>	<b>11</b>	<b>18</b>	<b>13</b>	<b>5</b>	<b>13</b>	<b>81</b>	<b>87.0</b>
Gonzaga	12/2	73-79	L	26-48	.542	8-13	.615	19-22	.864	10	28	38	27.0	16	14	23	3	9	79	61.1
<b>Stanford</b>				<b>25-57</b>	<b>.439</b>	<b>9-22</b>	<b>.409</b>	<b>14-24</b>	<b>.583</b>	<b>9</b>	<b>15</b>	<b>24</b>	<b>39.4</b>	<b>18</b>	<b>14</b>	<b>15</b>	<b>6</b>	<b>12</b>	<b>73</b>	<b>85.0</b>
Baylor	12/15	68-63	W	22-63	.349	3-7	.429	16-20	.800	12	31	43	29.0	18	13	15	6	4	63	61.4
<b>Stanford</b>				<b>23-60</b>	<b>.383</b>	<b>13-30</b>	<b>.433</b>	<b>9-21</b>	<b>.429</b>	<b>7</b>	<b>23</b>	<b>30</b>	<b>38.2</b>	<b>19</b>	<b>13</b>	<b>10</b>	<b>5</b>	<b>7</b>	<b>68</b>	<b>82.9</b>
Tennessee	12/18	95-85	W	30-75	.400	9-28	.321	16-23	.696	12	19	31	29.2	21	14	8	0	8	85	64.0
<b>Stanford</b>				<b>33-60</b>	<b>.550</b>	<b>14-24</b>	<b>.583</b>	<b>15-21</b>	<b>.714</b>	<b>9</b>	<b>36</b>	<b>45</b>	<b>39.0</b>	<b>15</b>	<b>19</b>	<b>20</b>	<b>3</b>	<b>3</b>	<b>95</b>	<b>84.2</b>
Buffalo	12/21	62-55	W	19-69	.275	6-29	.207	11-17	.647	18	26	44	30.7	15	12	14	0	12	55	63.1
<b>Stanford</b>				<b>23-59</b>	<b>.390</b>	<b>5-20</b>	<b>.250</b>	<b>11-15</b>	<b>.733</b>	<b>12</b>	<b>33</b>	<b>45</b>	<b>39.6</b>	<b>18</b>	<b>18</b>	<b>19</b>	<b>5</b>	<b>5</b>	<b>62</b>	<b>82.0</b>
CSUN	12/29	69-43	W	16-59	.271	5-21	.238	6-12	.500	12	23	35	31.1	9	11	15	4	6	43	61.3
<b>Stanford</b>				<b>30-73</b>	<b>.411</b>	<b>5-21</b>	<b>.238</b>	<b>4-6</b>	<b>.667</b>	<b>19</b>	<b>34</b>	<b>53</b>	<b>40.8</b>	<b>13</b>	<b>14</b>	<b>10</b>	<b>5</b>	<b>7</b>	<b>69</b>	<b>80.8</b>
USC	1/4	72-64	W	26-69	.377	5-24	.208	7-13	.538	13	27	40	31.8	18	10	13	5	8	64	61.5
<b>Stanford</b>				<b>27-67</b>	<b>.403</b>	<b>8-29</b>	<b>.276</b>	<b>10-14</b>	<b>.714</b>	<b>14</b>	<b>32</b>	<b>46</b>	<b>41.2</b>	<b>11</b>	<b>12</b>	<b>15</b>	<b>7</b>	<b>3</b>	<b>72</b>	<b>80.1</b>
UCLA	1/6	86-80	W	31-69	.449	11-24	.458	7-15	.467	16	22	38	32.3	21	10	13	3	6	80	62.9
<b>Stanford</b>				<b>30-63</b>	<b>.476</b>	<b>12-28</b>	<b>.429</b>	<b>14-17</b>	<b>.824</b>	<b>12</b>	<b>25</b>	<b>37</b>	<b>40.9</b>	<b>10</b>	<b>21</b>	<b>15</b>	<b>5</b>	<b>10</b>	<b>86</b>	<b>80.5</b>
Arizona State	1/11	72-65	W	29-74	.392	4-19	.211	3-7	.429	22	18	40	32.9	14	15	13	3	9	65	63.1
<b>Stanford</b>				<b>26-50</b>	<b>.520</b>	<b>6-15</b>	<b>.400</b>	<b>14-14</b>	<b>1.000</b>	<b>6</b>	<b>26</b>	<b>32</b>	<b>40.3</b>	<b>12</b>	<b>12</b>	<b>16</b>	<b>3</b>	<b>8</b>	<b>72</b>	<b>79.9</b>
Arizona	1/13	78-48	W	17-62	.274	5-21	.238	9-12	.750	10	22	32	32.8	14	6	11	3	4	48	62.1
<b>Stanford</b>				<b>28-63</b>	<b>.444</b>	<b>13-31</b>	<b>.419</b>	<b>9-10</b>	<b>.900</b>	<b>11</b>	<b>35</b>	<b>46</b>	<b>40.7</b>	<b>15</b>	<b>16</b>	<b>14</b>	<b>8</b>	<b>4</b>	<b>78</b>	<b>79.8</b>

**2018-19 Stanford Women's Basketball**  
**Stanford Combined Team Statistics (as of Jan 13, 2019)**  
**All games**

<b>RECORD:</b>	<b>OVERALL</b>	<b>HOME</b>	<b>AWAY</b>	<b>NEUTRAL</b>
ALL GAMES	14-1	7-0	5-1	2-0
CONFERENCE	4-0	2-0	2-0	0-0
NON-CONFERENCE	10-1	5-0	3-1	2-0

#	Player	gp-gs	min	Total		3-Point		F-Throw		Rebounds					pf	dq	a	to	blk	stl	pts	avg
				fg-fga	fg%	3fg-fga	3fg%	ft-fta	ft%	off	def	tot	avg									
11	Smith, Alanna	15-15	405	27.0	108-198	.545	39-80	.488	41-55	.745	27	87	114	7.6	43	2	38	38	36	14	296	19.7
23	Williams, Kiana	15-15	497	33.1	75-170	.441	38-96	.396	21-29	.724	0	36	36	2.4	17	0	75	41	0	15	209	13.9
21	Carrington, DiJonai	15-15	402	26.8	67-144	.465	20-52	.385	47-65	.723	20	90	110	7.3	25	0	24	37	2	21	201	13.4
15	Dodson, Maya	11-0	239	21.7	44-81	.543	0-0	.000	11-22	.500	24	22	46	4.2	22	0	16	10	19	5	99	9.0
04	Fingall, Nadia	12-12	244	20.3	40-80	.500	5-17	.294	11-21	.524	28	31	59	4.9	23	0	20	16	5	5	96	8.0
12	Hull, Lexie	6-3	114	19.0	16-37	.432	8-19	.421	4-4	1.000	16	18	34	5.7	14	0	3	9	4	8	44	7.3
24	Hull, Lacie	15-9	389	25.9	27-67	.403	16-41	.390	7-7	1.000	9	34	43	2.9	26	0	31	12	5	28	77	5.1
10	Jerome, Alyssa	15-3	218	14.5	15-43	.349	6-15	.400	11-15	.733	9	37	46	3.1	21	0	9	13	4	2	47	3.1
03	Wilson, Anna	11-3	112	10.2	11-31	.355	4-21	.190	5-6	.833	3	14	17	1.5	12	0	8	6	0	9	31	2.8
54	Brown, Jenna	15-0	156	10.4	13-38	.342	2-10	.200	7-15	.467	2	20	22	1.5	8	0	19	15	0	1	35	2.3
02	Coffee, Shannon	15-0	114	7.6	11-25	.440	4-13	.308	2-2	1.000	7	13	20	1.3	5	0	9	5	3	4	28	1.9
20	Moschkau, Estella	9-0	41	4.6	5-6	.833	4-5	.800	0-0	.000	1	4	5	0.6	5	0	3	6	0	2	14	1.6
14	Brewer, Mikaela	7-0	27	3.9	3-8	.375	0-3	.000	3-4	.750	2	2	4	0.6	3	0	0	2	1	1	9	1.3
22	Romano, Alexa	10-0	42	4.2	3-12	.250	2-10	.200	3-3	1.000	1	2	3	0.3	4	0	2	2	0	0	11	1.1
	Team										26	25	51				3					
	Total.....	15	3000		438-940	.466	148-382	.387	173-248	.698	175	435	610	40.7	228	2	257	215	79	115	1197	79.8
	Opponents.....	15	3000		337-932	.362	110-329	.334	147-218	.674	159	333	492	32.8	258	-	169	220	34	104	931	62.1

TEAM STATISTICS	STAN	OPP	Date	Opponent	Score	Att.
SCORING	1197	931	11/7/18	UC DAVIS	w 71-43	2471
Points per game	79.8	62.1	11/11/18	IDAHO	w 115-71	2582
Scoring margin	+17.7	-	11/15/18	SAN FRANCISCO	w 96-62	2077
FIELD GOALS-ATT	438-940	337-932	# 11/23/18	vs FGCU	w 88-65	1346
Field goal pct	.466	.362	# 11/24/18	vs American	w 71-49	1268
3 POINT FG-ATT	148-382	110-329	# 11/25/18	at Hawaii	w 81-59	1383
3-point FG pct	.387	.334	12/2/18	at Gonzaga	L 73-79	6000
3-pt FG made per game	9.9	7.3	12/15/18	BAYLOR	w 68-63	3440
FREE THROWS-ATT	173-248	147-218	12/18/18	at Tennessee	w 95-85	8051
Free throw pct	.698	.674	12/21/18	at Buffalo	w 62-55	3412
F-Throws made per game	11.5	9.8	12/29/18	CSUN	w 69-43	2520
REBOUNDS	610	492	* 1/4/19	USC	w 72-64	2557
Rebounds per game	40.7	32.8	* 1/6/19	UCLA	w 86-80	3231
Rebounding margin	+7.9	-	* 1/11/19	at Arizona State	w 72-65	2728
ASSISTS	257	169	* 1/13/19	at Arizona	w 78-48	2686
Assists per game	17.1	11.3				
TURNOVERS	215	220				
Turnovers per game	14.3	14.7				
Turnover margin	+0.3	-				
Assist/turnover ratio	1.2	0.8				
STEALS	115	104				
Steals per game	7.7	6.9				
BLOCKS	79	34				
Blocks per game	5.3	2.3				
ATTENDANCE	18878	26874				
Home games-Avg/Game	7-2697	6-4043				
Neutral site-Avg/Game	-	2-1307				

Score by Periods	1st	2nd	3rd	4th	Totals
Stanford	289	289	307	312	1197
Opponents	206	215	248	262	931

**2018-19 Stanford Women's Basketball  
Stanford Combined Team Statistics (as of Jan 13, 2019)  
Conference games only**

<b>RECORD:</b>	<b>OVERALL</b>	<b>HOME</b>	<b>AWAY</b>	<b>NEUTRAL</b>
ALL GAMES	4-0	2-0	2-0	0-0
CONFERENCE	4-0	2-0	2-0	0-0
NON-CONFERENCE	0-0	0-0	0-0	0-0

#	Player	gp-gs	min	avg	Total		3-Point		F-Throw		Rebounds				pf	dq	a	to	blk	stl	pts	avg		
					fg-fga	fg%	3fg-fga	3fg%	ft-fta	ft%	off	def	tot	avg										
11	Smith, Alanna	4-4	143	35.8	33-70	.471	11-23	.478	11-12	.917	10	32	42	10.5	12	0	9	8	18	3	88	22.0		
21	Carrington, DiJonai	4-4	134	33.5	27-58	.466	9-23	.391	17-21	.810	9	26	35	8.8	7	0	3	15	0	3	80	20.0		
23	Williams, Kiana	4-4	143	35.8	23-47	.489	11-26	.423	9-11	.818	0	11	11	2.8	3	0	25	13	0	4	66	16.5		
24	Hull, Lacie	4-4	126	31.5	8-20	.400	3-12	.250	3-3	1.000	0	12	12	3.0	6	0	11	2	1	7	22	5.5		
12	Hull, Lexie	3-0	37	12.3	4-10	.400	2-4	.500	2-2	1.000	7	6	13	4.3	6	0	0	5	1	0	12	4.0		
54	Brown, Jenna	4-0	33	8.3	4-8	.500	1-2	.500	2-2	1.000	0	1	1	0.3	1	0	3	7	0	1	11	2.8		
10	Jerome, Alyssa	4-3	75	18.8	4-11	.364	2-5	.400	0-0	.000	1	11	12	3.0	6	0	2	4	1	0	10	2.5		
04	Fingall, Nadia	1-1	18	18.0	1-2	.500	0-1	.000	0-0	.000	2	2	4	4.0	1	0	2	2	1	0	2	2.0		
03	Wilson, Anna	4-0	35	8.8	4-8	.500	0-3	.000	0-0	.000	0	2	2	0.5	1	0	1	3	0	2	8	2.0		
02	Coffee, Shannon	4-0	46	11.5	3-8	.375	0-4	.000	2-2	1.000	4	4	8	2.0	2	0	4	1	1	4	8	2.0		
14	Brewer, Mikaela	1-0	6	6.0	0-1	.000	0-0	.000	1-2	.500	1	0	1	1.0	1	0	0	0	0	1	1	1.0		
20	Moschkau, Estella	1-0	4	4.0	0-0	.000	0-0	.000	0-0	.000	0	2	2	2.0	2	0	1	0	0	0	0	0.0		
Team											9	9	18											
Total.....		4	800		111-243	.457	39-103	.379	47-55	.855	43	118	161	40.2	48	0	61	60	23	25	308	77.0		
Opponents.....		4	800		103-274	.376	25-88	.284	26-47	.553	61	89	150	37.5	67	-	41	50	14	27	257	64.2		

TEAM STATISTICS	STAN	OPP	Date	Opponent	Score	Att.
SCORING	308	257	* 1/4/19	USC	w 72-64	2557
Points per game	77.0	64.2	* 1/6/19	UCLA	w 86-80	3231
Scoring margin	+12.8	-	* 1/11/19	at Arizona State	w 72-65	2728
FIELD GOALS-ATT	111-243	103-274	* 1/13/19	at Arizona	w 78-48	2686
Field goal pct	.457	.376	* = Pac-12			
3 POINT FG-ATT	39-103	25-88	# = Rainbow Wahine Showdown; Honolulu, O'ahu			
3-point FG pct	.379	.284				
3-pt FG made per game	9.8	6.3				
FREE THROWS-ATT	47-55	26-47				
Free throw pct	.855	.553				
F-Throws made per game	11.8	6.5				
REBOUNDS	161	150				
Rebounds per game	40.2	37.5				
Rebounding margin	+2.8	-				
ASSISTS	61	41				
Assists per game	15.3	10.3				
TURNOVERS	60	50				
Turnovers per game	15.0	12.5				
Turnover margin	-2.5	-				
Assist/turnover ratio	1.0	0.8				
STEALS	25	27				
Steals per game	6.3	6.8				
BLOCKS	23	14				
Blocks per game	5.8	3.5				
ATTENDANCE	5788	5414				
Home games-Avg/Game	2-2894	2-2707				
Neutral site-Avg/Game	-	0-0				

Score by Periods	1st	2nd	3rd	4th	Totals
Stanford	79	68	84	77	308
Opponents	66	50	62	79	257

**POINTS-REBOUNDS-ASSISTS**

OPPONENT	#2 SC	#3 AW	#4 NF	#10 AJ	#11 AS	#12 LH	#13 MS	#14 MB	#15 MD	#20 EM	#21 DC	#23 KW	#24 LH	#54 JB
UC Davis	0-1-1	0-5-1	2-4-0	6-8-0	16-2-1	11-11-0	DNP	0-0-0	10-6-1	0-0-0	0-2-1	14-1-3	2-3-0	4-3-2
Idaho	2-1-0	10-1-1	16-8-2	4-6-2	19-9-4	17-5-0	DNP	2-0-0	10-5-0	3-0-1	6-4-1	19-3-9	0-2-2	7-3-3
San Francisco	0-0-2	2-0-0	7-3-2	7-2-0	18-7-3	4-5-3	DNP	4-1-0	10-3-6	5-1-1	9-5-4	21-0-3	6-1-0	3-2-0
FGCU	0-1-0	8-4-3	24-8-5	2-3-1	6-6-2	DNP	DNP	DNP	6-4-1	3-0-0	16-9-3	17-6-2	3-4-4	0-0-1
American	3-1-0	0-1-2	10-5-2	3-3-0	25-8-4	DNP	DNP	DNP	4-3-1	0-0-0	13-7-1	9-0-7	0-3-0	4-3-1
Hawaii	2-1-0	2-4-0	7-6-1	4-2-1	30-4-3	DNP	DNP	0-0-0	7-1-0	0-0-0	12-4-4	9-4-3	8-3-6	0-0-0
Gonzaga	0-0-0	DNP	5-3-3	6-4-0	13-7-1	DNP	DNP	DNP	8-4-2	DNP	13-3-1	18-1-3	9-1-3	1-0-1
Baylor	9-2-0	1-0-0	2-3-1	0-2-0	21-8-2	DNP	DNP	DNP	9-5-1	DNP	10-6-2	13-1-5	3-2-0	0-1-2
Tennessee	0-2-1	DNP	3-6-1	0-2-0	16-3-3	DNP	DNP	DNP	10-9-2	DNP	33-13-2	16-5-7	14-3-1	3-1-2
Buffalo	0-0-0	DNP	12-7-1	0-0-1	30-13-5	DNP	DNP	0-0-0	9-1-1	0-0-0	4-10-0	7-2-7	0-5-2	0-1-1
CSUN	4-3-1	DNP	6-2-0	5-2-2	14-5-1	DNP	DNP	2-2-0	16-5-1	3-2-0	5-12-2	0-2-1	10-4-2	2-7-3
USC	6-4-0	0-0-0	2-4-2	0-2-1	19-11-2	DNP	DNP	DNP	DNP	DNP	14-7-0	22-4-4	7-8-0	2-0-3
UCLA	0-0-1	0-0-0	DNP	6-3-0	24-11-3	0-3-0	DNP	DNP	DNP	DNP	30-9-1	21-2-10	5-2-6	0-0-0
Arizona State	0-1-2	6-0-1	DNP	2-1-0	25-6-2	4-5-0	DNP	DNP	DNP	DNP	17-11-1	10-4-4	8-1-2	0-0-0
Arizona	2-3-1	2-2-0	DNP	2-6-1	20-14-2	8-5-0	DNP	1-1-0	DNP	0-2-1	19-8-1	13-1-7	2-1-3	9-1-0

**GAME-BY-GAME STARTERS**

OPPONENT	DATE	SCORE	W/L	1	2	3	4	5
UC Davis	11/7	71-43	W	Williams	Lexie Hull	Carrington	Smith	Fingall
Idaho	11/11	115-71	W	Williams	Lexie Hull	Carrington	Smith	Fingall
San Francisco	11/15	96-62	W	Williams	Lexie Hull	Carrington	Smith	Fingall
FGCU	11/23	88-65	W	Williams	Wilson	Carrington	Smith	Fingall
American	11/24	71-49	W	Williams	Wilson	Carrington	Smith	Fingall
Hawaii	11/25	81-59	W	Williams	Wilson	Carrington	Smith	Fingall
Gonzaga	12/2	73-79	L	Williams	Lacie Hull	Carrington	Smith	Fingall
Baylor	12/15	68-63	W	Williams	Lacie Hull	Carrington	Smith	Fingall
Tennessee	12/18	95-85	W	Williams	Lacie Hull	Carrington	Smith	Fingall
Buffalo	12/21	62-55	W	Williams	Lacie Hull	Carrington	Smith	Fingall
CSUN	12/29	69-43	W	Williams	Lacie Hull	Carrington	Smith	Fingall
USC	1/4	72-64	W	Williams	Lacie Hull	Carrington	Smith	Fingall
UCLA	1/6	86-80	W	Williams	Lacie Hull	Carrington	Smith	Jerome
Arizona State	1/11	72-65	W	Williams	Lacie Hull	Carrington	Smith	Jerome
Arizona	1/13	78-48	W	Williams	Lacie Hull	Carrington	Smith	Jerome

**2018-19 Stanford Women's Basketball**  
**Stanford Season/Career Statistics (as of Jan 13, 2019)**  
**All games**

## SEASON STATISTICS

## CAREER STATISTICS

SUMMARY	gp-gs	min/g	fg%	3fg%	ft%	r/g	a/g	stl	blk	pts/g	gp-gs	min/g	fg%	3fg%	ft%	r/g	a/g	stl	blk	pts/g
Smith, Alanna	15-15	27.0	.545	.488	.745	7.6	2.5	14	36	19.7	122-53	20.8	.479	.358	.648	5.3	1.0	89	183	10.7
Williams, Kiana	15-15	33.1	.441	.396	.724	2.4	5.0	15	0	13.9	50-41	27.9	.424	.388	.781	1.9	2.8	45	5	11.4
Carrington, DiJonai	15-15	26.8	.465	.385	.723	7.3	1.6	21	2	13.4	82-22	17.0	.427	.306	.688	4.5	1.2	86	12	7.0
Dodson, Maya	11-0	21.7	.543	.000	.500	4.2	1.5	5	19	9.0	44-4	13.9	.516	.000	.436	2.6	0.5	7	46	4.9
Fingall, Nadia	12-12	20.3	.500	.294	.524	4.9	1.7	5	5	8.0	82-20	12.9	.487	.328	.571	3.2	0.7	34	31	4.4
Hull, Lexie	6-3	19.0	.432	.421	1.000	5.7	0.5	8	4	7.3	6-3	19.0	.432	.421	1.000	5.7	0.5	8	4	7.3
Hull, Lacie	15-9	25.9	.403	.390	1.000	2.9	2.1	28	5	5.1	15-9	25.9	.403	.390	1.000	2.9	2.1	28	5	5.1
Jerome, Alyssa	15-3	14.5	.349	.400	.733	3.1	0.6	2	4	3.1	49-4	11.3	.381	.326	.714	1.7	0.5	3	7	2.4
Wilson, Anna	11-3	10.2	.355	.190	.833	1.5	0.7	9	0	2.8	38-5	10.1	.328	.286	.615	1.2	0.6	22	1	3.1
Brown, Jenna	15-0	10.4	.342	.200	.467	1.5	1.3	1	0	2.3	15-0	10.4	.342	.200	.467	1.5	1.3	1	0	2.3
Coffee, Shannon	15-0	7.6	.440	.308	1.000	1.3	0.6	4	3	1.9	74-2	4.8	.441	.308	.441	1.1	0.3	9	11	1.7
Moschkau, Estella	9-0	4.6	.833	.800	.000	0.6	0.3	2	0	1.6	32-0	2.8	.600	.583	.500	0.3	0.2	2	0	0.8
Brewer, Mikaela	7-0	3.9	.375	.000	.750	0.6	0.0	1	1	1.3	34-0	3.5	.267	.214	.750	0.3	0.2	2	1	1.0
Romano, Alexa	10-0	4.2	.250	.200	1.000	0.3	0.2	0	0	1.1	78-8	6.5	.344	.300	.727	0.7	0.4	20	4	1.6

SCORING	fg-fga	fg%	3fg-fga	3fg%	ft-fta	ft%	pts	pts/g	fg-fga	fg%	3fg-fga	3fg%	ft-fta	ft%	pts	pts/g
Smith, Alanna	108-198	.545	39-80	.488	41-55	.745	296	19.7	506-1057	.479	113-316	.358	175-270	.648	1300	10.7
Williams, Kiana	75-170	.441	38-96	.396	21-29	.724	209	13.9	203-479	.424	109-281	.388	57-73	.781	572	11.4
Carrington, DiJonai	67-144	.465	20-52	.385	47-65	.723	201	13.4	209-490	.427	55-180	.306	97-141	.688	570	7.0
Dodson, Maya	44-81	.543	0-0	.000	11-22	.500	99	9.0	95-184	.516	0-0	.000	24-55	.436	214	4.9
Fingall, Nadia	40-80	.500	5-17	.294	11-21	.524	96	8.0	148-304	.487	20-61	.328	48-84	.571	364	4.4
Hull, Lexie	16-37	.432	8-19	.421	4-4	1.000	44	7.3	16-37	.432	8-19	.421	4-4	1.000	44	7.3
Hull, Lacie	27-67	.403	16-41	.390	7-7	1.000	77	5.1	27-67	.403	16-41	.390	7-7	1.000	77	5.1
Jerome, Alyssa	15-43	.349	6-15	.400	11-15	.733	47	3.1	43-113	.381	15-46	.326	15-21	.714	116	2.4
Wilson, Anna	11-31	.355	4-21	.190	5-6	.833	31	2.8	41-125	.328	28-98	.286	8-13	.615	118	3.1
Brown, Jenna	13-38	.342	2-10	.200	7-15	.467	35	2.3	13-38	.342	2-10	.200	7-15	.467	35	2.3
Coffee, Shannon	11-25	.440	4-13	.308	2-2	1.000	28	1.9	49-111	.441	12-39	.308	15-34	.441	125	1.7
Moschkau, Estella	5-6	.833	4-5	.800	0-0	.000	14	1.6	9-15	.600	7-12	.583	1-2	.500	26	0.8
Brewer, Mikaela	3-8	.375	0-3	.000	3-4	.750	9	1.3	12-45	.267	6-28	.214	3-4	.750	33	1.0
Romano, Alexa	3-12	.250	2-10	.200	3-3	1.000	11	1.1	43-125	.344	21-70	.300	16-22	.727	123	1.6

TOTALS	o-reb	d-reb	t-reb	pf	fo	ast	to	a/to	o-reb	d-reb	t-reb	pf	fo	ast	to	a/to
Smith, Alanna	27	87	114	43	2	38	38	1.0	213	434	647	290	9	126	211	0.6
Williams, Kiana	0	36	36	17	0	75	41	1.8	4	90	94	55	0	142	81	1.8
Carrington, DiJonai	20	90	110	25	0	24	37	0.6	92	276	368	126	0	96	130	0.7
Dodson, Maya	24	22	46	22	0	16	10	1.6	56	57	113	60	1	21	36	0.6
Fingall, Nadia	28	31	59	23	0	20	16	1.3	102	157	259	127	1	61	68	0.9
Hull, Lexie	16	18	34	14	0	3	9	0.3	16	18	34	14	0	3	9	0.3
Hull, Lacie	9	34	43	26	0	31	12	2.6	9	34	43	26	0	31	12	2.6
Jerome, Alyssa	9	37	46	21	0	9	13	0.7	20	62	82	48	0	23	35	0.7
Wilson, Anna	3	14	17	12	0	8	6	1.3	4	42	46	38	0	21	26	0.8
Brown, Jenna	2	20	22	8	0	19	15	1.3	2	20	22	8	0	19	15	1.3
Coffee, Shannon	7	13	20	5	0	9	5	1.8	19	59	78	29	0	19	36	0.5
Moschkau, Estella	1	4	5	5	0	3	6	0.5	3	6	9	9	0	5	6	0.8
Brewer, Mikaela	2	2	4	3	0	0	2	0.0	3	8	11	6	0	6	12	0.5
Romano, Alexa	1	2	3	4	0	2	2	1.0	10	44	54	22	0	32	31	1.0

## 2018-19 Individual Game-by-Game

## #02 Coffee, Shannon

Opponent	Date	gs	min	Total		3-Pointers		Free throws		Rebounds				pf	a	t/o	blk	stl	pts	avg
				fg-fga	pct	3fg-fga	pct	ft-fga	pct	off	def	tot	avg							
UC DAVIS	11/7/18		6	0-1	.000	0-0	.000	0-0	.000	1	0	1	1.0	1	1	1	0	0	0	0.0
IDAHO	11/11/18		6	1-1	1.000	0-0	.000	0-0	.000	0	1	1	1.0	1	0	0	0	0	2	1.0
SAN FRANCISCO	11/15/18		8	0-1	.000	0-1	.000	0-0	.000	0	0	0	0.7	0	2	0	1	0	0	0.7
vs FGCU	11/23/18		1	0-0	.000	0-0	.000	0-0	.000	0	1	1	0.8	0	0	0	0	0	0	0.5
vs American	11/24/18		4	1-3	.333	1-2	.500	0-0	.000	0	1	1	0.8	0	0	0	0	0	3	1.0
at Hawaii	11/25/18		5	1-2	.500	0-0	.000	0-0	.000	0	1	1	0.8	0	0	0	0	0	2	1.2
at Gonzaga	12/2/18		2	0-0	.000	0-0	.000	0-0	.000	0	0	0	0.7	0	0	0	0	0	0	1.0
BAYLOR	12/15/18		19	3-4	.750	3-4	.750	0-0	.000	0	2	2	0.9	1	0	1	0	0	9	2.0
at Tennessee	12/18/18		8	0-2	.000	0-2	.000	0-0	.000	0	2	2	1.0	0	1	1	0	0	0	1.8
at Buffalo	12/21/18		0	0-0	.000	0-0	.000	0-0	.000	0	0	0	0.9	0	0	0	0	0	0	1.6
CSUN	12/29/18		9	2-3	.667	0-0	.000	0-0	.000	2	1	3	1.1	0	1	1	1	0	4	1.8
USC	1/4/19		12	2-3	.667	0-0	.000	2-2	1.000	2	2	4	1.3	0	0	1	0	0	6	2.2
UCLA	1/6/19		12	0-0	.000	0-0	.000	0-0	.000	0	0	0	1.2	1	1	0	0	1	0	2.0
at Arizona State	1/11/19		9	0-1	.000	0-1	.000	0-0	.000	0	1	1	1.2	1	2	0	1	2	0	1.9
at Arizona	1/13/19		13	1-4	.250	0-3	.000	0-0	.000	2	1	3	1.3	0	1	0	0	1	2	1.9
Totals		0	114	11-25	.440	4-13	.308	2-2	1.000	7	13	20	1.3	5	9	5	3	4	28	1.9

## #03 Wilson, Anna

Opponent	Date	gs	min	Total		3-Pointers		Free throws		Rebounds				pf	a	t/o	blk	stl	pts	avg
				fg-fga	pct	3fg-fga	pct	ft-fga	pct	off	def	tot	avg							
UC DAVIS	11/7/18		13	0-4	.000	0-4	.000	0-0	.000	0	5	5	5.0	1	1	1	0	1	0	0.0
IDAHO	11/11/18		11	3-8	.375	2-6	.333	2-2	1.000	1	0	1	3.0	2	1	0	0	2	10	5.0
SAN FRANCISCO	11/15/18		13	1-3	.333	0-1	.000	0-0	.000	0	0	0	2.0	2	0	0	0	1	2	4.0
vs FGCU	11/23/18	*	17	3-6	.500	2-5	.400	0-0	.000	1	3	4	2.5	2	3	1	0	1	8	5.0
vs American	11/24/18	*	5	0-0	.000	0-0	.000	0-0	.000	1	0	1	2.2	3	2	0	0	0	0	4.0
at Hawaii	11/25/18	*	15	0-2	.000	0-2	.000	2-2	1.000	0	4	4	2.5	1	0	0	0	1	2	3.7
at Gonzaga	12/2/18	dnp		-	-	-	-	-	-	-	-	-	-	-	-	-	-	-	-	-
BAYLOR	12/15/18		3	0-0	.000	0-0	.000	1-2	.500	0	0	0	2.1	0	0	1	0	1	1	3.3
at Tennessee	12/18/18	dnp		-	-	-	-	-	-	-	-	-	-	-	-	-	-	-	-	-
at Buffalo	12/21/18	dnp		-	-	-	-	-	-	-	-	-	-	-	-	-	-	-	-	-
USC	1/4/19		5	0-0	.000	0-0	.000	0-0	.000	0	0	0	1.9	0	0	0	0	0	0	2.9
UCLA	1/6/19		1	0-0	.000	0-0	.000	0-0	.000	0	0	0	1.7	0	0	1	0	0	0	2.6
at Arizona State	1/11/19		18	3-5	.600	0-1	.000	0-0	.000	0	0	0	1.5	1	1	2	0	1	6	2.9
at Arizona	1/13/19		11	1-3	.333	0-2	.000	0-0	.000	0	2	2	1.5	0	0	0	0	1	2	2.8
Totals		3	112	11-31	.355	4-21	.190	5-6	.833	3	14	17	1.5	12	8	6	0	9	31	2.8

## #04 Fingall, Nadia

Opponent	Date	gs	min	Total		3-Pointers		Free throws		Rebounds				pf	a	t/o	blk	stl	pts	avg
				fg-fga	pct	3fg-fga	pct	ft-fga	pct	off	def	tot	avg							
UC DAVIS	11/7/18	*	16	0-1	.000	0-0	.000	2-2	1.000	1	3	4	4.0	3	0	3	0	0	2	2.0
IDAHO	11/11/18	*	20	7-9	.778	0-0	.000	2-5	.400	3	5	8	6.0	1	2	1	2	0	16	9.0
SAN FRANCISCO	11/15/18	*	13	3-6	.500	1-3	.333	0-0	.000	2	1	3	5.0	3	2	1	0	0	7	8.3
vs FGCU	11/23/18	*	30	11-14	.786	1-2	.500	1-4	.250	5	3	8	5.8	2	5	1	0	1	24	12.3
vs American	11/24/18	*	24	3-8	.375	1-4	.250	3-4	.750	4	1	5	5.6	3	2	1	0	1	10	11.8
at Hawaii	11/25/18	*	24	3-7	.429	1-1	1.000	0-0	.000	2	4	6	5.7	1	1	2	0	1	7	11.0
at Gonzaga	12/2/18	*	25	2-4	.500	1-2	.500	0-0	.000	1	2	3	5.3	2	3	1	1	2	5	10.1
BAYLOR	12/15/18	*	17	1-8	.125	0-3	.000	0-0	.000	2	1	3	5.0	3	1	1	1	0	2	9.1
at Tennessee	12/18/18	*	18	1-4	.250	0-0	.000	1-2	.500	2	4	6	5.1	0	1	2	0	0	3	8.4
at Buffalo	12/21/18	*	29	5-9	.556	0-0	.000	2-4	.500	3	4	7	5.3	1	1	1	0	0	12	8.8
CSUN	12/29/18	*	10	3-8	.375	0-1	.000	0-0	.000	1	1	2	5.0	3	0	0	0	0	6	8.5
USC	1/4/19	*	18	1-2	.500	0-1	.000	0-0	.000	2	2	4	4.9	1	2	2	1	0	2	8.0
at Arizona State	1/11/19	dnp		-	-	-	-	-	-	-	-	-	-	-	-	-	-	-	-	-
Totals		12	244	40-80	.500	5-17	.294	11-21	.524	28	31	59	4.9	23	20	16	5	5	96	8.0

## 2018-19 Individual Game-by-Game

## #10 Jerome, Alyssa

Opponent	Date	gs	min	Total		3-Pointers		Free throws		Rebounds				pf	a	t/o	blk	stl	pts	avg	
				fg-fga	pct	3fg-fga	pct	ft-fa	pct	off	def	tot	avg								
UC DAVIS	11/7/18		16	2-5	.400	0-1	.000	2-2	1.000	2	6	8	8.0	0	0	1	0	0	6	6.0	
IDAHO	11/11/18		13	1-2	.500	0-1	.000	2-2	1.000	0	6	6	7.0	4	2	1	0	0	4	5.0	
SAN FRANCISCO	11/15/18		16	3-4	.750	1-2	.500	0-1	.000	0	2	2	5.3	2	0	0	2	0	7	5.7	
vs FGCU	11/23/18		14	1-4	.250	0-0	.000	0-0	.000	0	3	3	4.8	1	1	2	0	0	2	4.8	
vs American	11/24/18		12	0-2	.000	0-1	.000	3-4	.750	2	1	3	4.4	2	0	1	0	0	3	4.4	
at Hawaii	11/25/18		11	0-3	.000	0-1	.000	4-6	.667	2	0	2	4.0	1	1	0	0	1	4	4.3	
at Gonzaga	12/2/18		18	2-5	.400	2-2	1.000	0-0	.000	1	3	4	4.0	1	0	0	1	0	6	4.6	
BAYLOR	12/15/18		8	0-1	.000	0-0	.000	0-0	.000	0	2	2	3.8	0	0	0	0	0	0	4.0	
at Tennessee	12/18/18		4	0-1	.000	0-0	.000	0-0	.000	1	1	2	3.6	0	0	2	0	0	0	3.6	
at Buffalo	12/21/18		9	0-1	.000	0-0	.000	0-0	.000	0	0	0	3.2	2	1	1	0	1	0	3.2	
CSUN	12/29/18		22	2-4	.500	1-2	.500	0-0	.000	0	2	2	3.1	2	2	1	0	0	5	3.4	
USC	1/4/19		14	0-1	.000	0-0	.000	0-0	.000	1	1	2	3.0	1	1	0	0	0	0	3.1	
UCLA	1/6/19	*	20	2-2	1.000	2-2	1.000	0-0	.000	0	3	3	3.0	1	0	0	0	0	6	3.3	
at Arizona State	1/11/19	*	13	1-3	.333	0-0	.000	0-0	.000	0	1	1	2.9	1	0	1	0	0	2	3.2	
at Arizona	1/13/19	*	28	1-5	.200	0-3	.000	0-0	.000	0	6	6	3.1	3	1	3	1	0	2	3.1	
Totals			3	218	15-43	.349	6-15	.400	11-15	.733	9	37	46	3.1	21	9	13	4	2	47	3.1

## #11 Smith, Alanna

Opponent	Date	gs	min	Total		3-Pointers		Free throws		Rebounds				pf	a	t/o	blk	stl	pts	avg	
				fg-fga	pct	3fg-fga	pct	ft-fa	pct	off	def	tot	avg								
UC DAVIS	11/7/18	*	15	4-7	.571	1-2	.500	7-7	1.000	1	1	2	2.0	4	1	4	1	1	16	16.0	
IDAHO	11/11/18	*	24	8-12	.667	2-5	.400	1-1	1.000	4	5	9	5.5	0	4	3	1	2	19	17.5	
SAN FRANCISCO	11/15/18	*	26	6-12	.500	5-8	.625	1-2	.500	0	7	7	6.0	1	3	1	4	1	18	17.7	
vs FGCU	11/23/18	*	13	1-5	.200	0-1	.000	4-5	.800	2	4	6	6.0	4	2	3	1	1	6	14.8	
vs American	11/24/18	*	31	10-18	.556	3-6	.500	2-3	.667	1	7	8	6.4	1	4	3	1	2	25	16.8	
at Hawaii	11/25/18	*	25	12-15	.800	3-6	.500	3-3	1.000	2	2	4	6.0	2	3	3	1	0	30	19.0	
at Gonzaga	12/2/18	*	24	4-9	.444	2-5	.400	3-6	.500	2	5	7	6.1	5	1	3	2	3	13	18.1	
BAYLOR	12/15/18	*	28	7-12	.583	5-9	.556	2-8	.250	0	8	8	6.4	4	2	3	2	1	21	18.5	
at Tennessee	12/18/18	*	21	5-6	.833	3-4	.750	3-4	.750	1	2	3	6.0	5	3	2	1	0	16	18.2	
at Buffalo	12/21/18	*	38	12-22	.545	4-9	.444	2-2	1.000	3	10	13	6.7	2	5	5	3	0	30	19.4	
CSUN	12/29/18	*	17	6-10	.600	0-2	.000	2-2	1.000	1	4	5	6.5	3	1	0	1	0	14	18.9	
USC	1/4/19	*	39	8-21	.381	3-9	.333	0-0	.000	2	9	11	6.9	2	2	1	5	0	19	18.9	
UCLA	1/6/19	*	40	8-18	.444	3-5	.600	5-6	.833	2	9	11	7.2	4	3	2	5	2	24	19.3	
at Arizona State	1/11/19	*	37	9-15	.600	1-3	.333	6-6	1.000	1	5	6	7.1	4	2	2	1	1	25	19.7	
at Arizona	1/13/19	*	27	8-16	.500	4-6	.667	0-0	.000	5	9	14	7.6	2	2	3	7	0	20	19.7	
Totals			15	405	108-198	.545	39-80	.488	41-55	.745	27	87	114	7.6	43	38	38	36	14	296	19.7

## #12 Hull, Lexie

Opponent	Date	gs	min	Total		3-Pointers		Free throws		Rebounds				pf	a	t/o	blk	stl	pts	avg	
				fg-fga	pct	3fg-fga	pct	ft-fa	pct	off	def	tot	avg								
UC DAVIS	11/7/18	*	27	5-10	.500	1-4	.250	0-0	.000	3	8	11	11.0	3	0	2	1	4	11	11.0	
IDAHO	11/11/18	*	25	6-12	.500	5-10	.500	0-0	.000	2	3	5	8.0	3	0	0	2	2	17	14.0	
SAN FRANCISCO	11/15/18	*	25	1-5	.200	0-1	.000	2-2	1.000	4	1	5	7.0	2	3	2	0	2	4	10.7	
vs FGCU	11/23/18	dnp		-	-	-	-	-	-	-	-	-	-	-	-	-	-	-	-	-	
vs American	11/24/18	dnp		-	-	-	-	-	-	-	-	-	-	-	-	-	-	-	-	-	
at Hawaii	11/25/18	dnp		-	-	-	-	-	-	-	-	-	-	-	-	-	-	-	-	-	
at Gonzaga	12/2/18	dnp		-	-	-	-	-	-	-	-	-	-	-	-	-	-	-	-	-	
at Tennessee	12/18/18	dnp		-	-	-	-	-	-	-	-	-	-	-	-	-	-	-	-	-	
at Buffalo	12/21/18	dnp		-	-	-	-	-	-	-	-	-	-	-	-	-	-	-	-	-	
UCLA	1/6/19		8	0-4	.000	0-2	.000	0-0	.000	3	0	3	6.0	1	0	3	0	0	0	8.0	
at Arizona State	1/11/19		15	1-2	.500	0-0	.000	2-2	1.000	2	3	5	5.8	1	0	1	1	0	4	7.2	
at Arizona	1/13/19		14	3-4	.750	2-2	1.000	0-0	.000	2	3	5	5.7	4	0	1	0	0	8	7.3	
Totals			3	114	16-37	.432	8-19	.421	4-4	1.000	16	18	34	5.7	14	3	9	4	8	44	7.3

## 2018-19 Individual Game-by-Game

## #14 Brewer, Mikaela

Opponent	Date	gs	min	Total		3-Pointers		Free throws		Rebounds				pf	a	t/o	blk	stl	pts	avg	
				fg-fga	pct	3fg-fga	pct	ft-fa	pct	off	def	tot	avg								
UC DAVIS	11/7/18		2	0-1	.000	0-1	.000	0-0	.000	0	0	0	0.0	0	0	0	1	0	0	0.0	
IDAHO	11/11/18		5	1-2	.500	0-1	.000	0-0	.000	0	0	0	0.0	0	0	1	0	0	2	1.0	
SAN FRANCISCO	11/15/18		4	1-1	1.000	0-0	.000	2-2	1.000	0	1	1	0.3	1	0	0	0	0	4	2.0	
vs FGCU	11/23/18		dnp	-	-	-	-	-	-	-	-	-	-	-	-	-	-	-	-	-	
vs American	11/24/18		dnp	-	-	-	-	-	-	-	-	-	-	-	-	-	-	-	-	-	
at Hawaii	11/25/18		1	0-0	.000	0-0	.000	0-0	.000	0	0	0	0.3	0	0	0	0	0	0	1.5	
at Gonzaga	12/2/18		dnp	-	-	-	-	-	-	-	-	-	-	-	-	-	-	-	-	-	
at Tennessee	12/18/18		dnp	-	-	-	-	-	-	-	-	-	-	-	-	-	-	-	-	-	
at Buffalo	12/21/18		1	0-0	.000	0-0	.000	0-0	.000	0	0	0	0.2	1	0	0	0	0	0	1.2	
CSUN	12/29/18		8	1-3	.333	0-1	.000	0-0	.000	1	1	2	0.5	0	0	1	0	0	2	1.3	
at Arizona State	1/11/19		dnp	-	-	-	-	-	-	-	-	-	-	-	-	-	-	-	-	-	
at Arizona	1/13/19		6	0-1	.000	0-0	.000	1-2	.500	1	0	1	0.6	1	0	0	0	1	1	1.3	
Totals			0	27	3-8	.375	0-3	.000	3-4	.750	2	2	4	0.6	3	0	2	1	1	9	1.3

## #15 Dodson, Maya

Opponent	Date	gs	min	Total		3-Pointers		Free throws		Rebounds				pf	a	t/o	blk	stl	pts	avg	
				fg-fga	pct	3fg-fga	pct	ft-fa	pct	off	def	tot	avg								
UC DAVIS	11/7/18		25	5-8	.625	0-0	.000	0-2	.000	4	2	6	6.0	3	1	1	3	2	10	10.0	
IDAHO	11/11/18		19	5-8	.625	0-0	.000	0-0	.000	3	2	5	5.5	2	0	0	1	1	10	10.0	
SAN FRANCISCO	11/15/18		19	4-7	.571	0-0	.000	2-5	.400	0	3	3	4.7	2	6	0	4	0	10	10.0	
vs FGCU	11/23/18		22	3-5	.600	0-0	.000	0-2	.000	2	2	4	4.5	1	1	1	0	0	6	9.0	
vs American	11/24/18		18	2-4	.500	0-0	.000	0-0	.000	1	2	3	4.2	1	1	1	1	0	4	8.0	
at Hawaii	11/25/18		15	3-4	.750	0-0	.000	1-1	1.000	0	1	1	3.7	2	0	1	2	0	7	7.8	
at Gonzaga	12/2/18		20	3-6	.500	0-0	.000	2-5	.400	4	0	4	3.7	2	2	2	0	8	7.9		
BAYLOR	12/15/18		27	3-7	.429	0-0	.000	3-4	.750	2	3	5	3.9	3	1	0	1	1	9	8.0	
at Tennessee	12/18/18		32	5-7	.714	0-0	.000	0-0	.000	4	5	9	4.4	3	2	1	1	0	10	8.2	
at Buffalo	12/21/18		17	3-8	.375	0-0	.000	3-3	1.000	1	0	1	4.1	2	1	2	1	0	9	8.3	
CSUN	12/29/18		25	8-17	.471	0-0	.000	0-0	.000	3	2	5	4.2	1	1	1	3	1	16	9.0	
at Arizona State	1/11/19		dnp	-	-	-	-	-	-	-	-	-	-	-	-	-	-	-	-	-	
Totals			0	239	44-81	.543	0-0	.000	11-22	.500	24	22	46	4.2	22	16	10	19	5	99	9.0

## #20 Moschkau, Estella

Opponent	Date	gs	min	Total		3-Pointers		Free throws		Rebounds				pf	a	t/o	blk	stl	pts	avg	
				fg-fga	pct	3fg-fga	pct	ft-fa	pct	off	def	tot	avg								
UC DAVIS	11/7/18		4	0-0	.000	0-0	.000	0-0	.000	0	0	0	0.0	0	0	0	0	0	0	0.0	
IDAHO	11/11/18		6	1-1	1.000	1-1	1.000	0-0	.000	0	0	0	0.0	0	1	1	0	0	3	1.5	
SAN FRANCISCO	11/15/18		5	2-2	1.000	1-1	1.000	0-0	.000	1	0	1	0.3	0	1	1	0	0	5	2.7	
vs FGCU	11/23/18		2	1-1	1.000	1-1	1.000	0-0	.000	0	0	0	0.3	0	0	1	0	0	3	2.8	
vs American	11/24/18		2	0-0	.000	0-0	.000	0-0	.000	0	0	0	0.2	0	0	0	0	0	0	2.2	
at Hawaii	11/25/18		6	0-0	.000	0-0	.000	0-0	.000	0	0	0	0.2	1	0	2	0	2	0	1.8	
at Gonzaga	12/2/18		dnp	-	-	-	-	-	-	-	-	-	-	-	-	-	-	-	-	-	
at Tennessee	12/18/18		dnp	-	-	-	-	-	-	-	-	-	-	-	-	-	-	-	-	-	
at Buffalo	12/21/18		0	0-0	.000	0-0	.000	0-0	.000	0	0	0	0.1	0	0	0	0	0	0	1.6	
CSUN	12/29/18		12	1-2	.500	1-2	.500	0-0	.000	0	2	2	0.4	2	0	1	0	0	3	1.8	
at Arizona State	1/11/19		dnp	-	-	-	-	-	-	-	-	-	-	-	-	-	-	-	-	-	
at Arizona	1/13/19		4	0-0	.000	0-0	.000	0-0	.000	0	2	2	0.6	2	1	0	0	0	0	1.6	
Totals			0	41	5-6	.833	4-5	.800	0-0	.000	1	4	5	0.6	5	3	6	0	2	14	1.6



## 2018-19 Individual Game-by-Game

## #21 Carrington, DiJonai

Opponent	Date	qs	min	Total		3-Pointers		Free throws		Rebounds				pf	a	t/o	blk	stl	pts	avg	
				fg-fga	pct	3fg-fga	pct	ft-fta	pct	off	def	tot	avg								
UC DAVIS	11/7/18	*	13	0-6	.000	0-2	.000	0-0	.000	0	2	2	2.0	2	1	1	0	2	0	0.0	
IDAHO	11/11/18	*	11	2-8	.250	1-4	.250	1-2	.500	3	1	4	3.0	0	1	0	0	0	6	3.0	
SAN FRANCISCO	11/15/18	*	18	4-7	.571	1-4	.250	0-0	.000	1	4	5	3.7	1	4	2	0	0	9	5.0	
vs FGCU	11/23/18	*	32	2-5	.400	0-0	.000	12-15	.800	0	9	9	5.0	1	3	2	0	1	16	7.8	
vs American	11/24/18	*	22	6-7	.857	0-0	.000	1-1	1.000	2	5	7	5.4	2	1	1	0	2	13	8.8	
at Hawaii	11/25/18	*	19	4-6	.667	2-2	1.000	2-3	.667	1	3	4	5.2	1	4	2	0	3	12	9.3	
at Gonzaga	12/2/18	*	27	5-13	.385	1-5	.200	2-5	.400	0	3	3	4.9	3	1	2	0	3	13	9.9	
BAYLOR	12/15/18	*	27	3-6	.500	1-1	1.000	3-7	.429	1	5	6	5.0	3	2	1	1	1	10	9.9	
at Tennessee	12/18/18	*	38	11-15	.733	4-5	.800	7-9	.778	0	13	13	5.9	1	2	5	0	1	33	12.4	
at Buffalo	12/21/18	*	35	1-7	.143	0-3	.000	2-2	1.000	1	9	10	6.3	3	0	5	1	2	4	11.6	
CSUN	12/29/18	*	26	2-6	.333	1-3	.333	0-0	.000	2	10	12	6.8	1	2	1	0	3	5	11.0	
USC	1/4/19	*	29	4-13	.308	0-4	.000	6-9	.667	2	5	7	6.8	2	0	2	0	1	14	11.3	
UCLA	1/6/19	*	39	11-18	.611	3-6	.500	5-6	.833	4	5	9	7.0	3	1	6	0	1	30	12.7	
at Arizona State	1/11/19	*	36	6-11	.545	3-5	.600	2-2	1.000	3	8	11	7.3	2	1	5	0	1	17	13.0	
at Arizona	1/13/19	*	30	6-16	.375	3-8	.375	4-4	1.000	0	8	8	7.3	0	1	2	0	0	19	13.4	
Totals			15	402	67-144	.465	20-52	.385	47-65	.723	20	90	110	7.3	25	24	37	2	21	201	13.4

## #23 Williams, Kiana

Opponent	Date	qs	min	Total		3-Pointers		Free throws		Rebounds				pf	a	t/o	blk	stl	pts	avg	
				fg-fga	pct	3fg-fga	pct	ft-fta	pct	off	def	tot	avg								
UC DAVIS	11/7/18	*	18	5-8	.625	3-5	.600	1-2	.500	0	1	1	1.0	0	3	2	0	0	14	14.0	
IDAHO	11/11/18	*	28	7-10	.700	4-7	.571	1-1	1.000	0	3	3	2.0	1	9	2	0	1	19	16.5	
SAN FRANCISCO	11/15/18	*	26	8-13	.615	4-6	.667	1-1	1.000	0	0	0	1.3	1	3	2	0	0	21	18.0	
vs FGCU	11/23/18	*	35	6-10	.600	5-8	.625	0-0	.000	0	6	6	2.5	0	2	4	0	1	17	17.8	
vs American	11/24/18	*	33	3-12	.250	2-6	.333	1-2	.500	0	0	0	2.0	2	7	3	0	0	9	16.0	
at Hawaii	11/25/18	*	35	4-9	.444	0-5	.000	1-2	.500	0	4	4	2.3	0	3	1	0	2	9	14.8	
at Gonzaga	12/2/18	*	40	7-17	.412	2-6	.333	2-2	1.000	0	1	1	2.1	2	3	4	0	1	18	15.3	
BAYLOR	12/15/18	*	40	5-16	.313	3-10	.300	0-0	.000	0	1	1	2.0	2	5	2	0	2	13	15.0	
at Tennessee	12/18/18	*	38	5-13	.385	3-7	.429	3-4	.750	0	5	5	2.3	3	7	6	0	2	16	15.1	
at Buffalo	12/21/18	*	40	2-9	.222	1-6	.167	2-4	.500	0	2	2	2.3	3	7	1	0	2	7	14.3	
CSUN	12/29/18	*	21	0-6	.000	0-4	.000	0-0	.000	0	2	2	2.3	0	1	1	0	0	0	13.0	
USC	1/4/19	*	40	8-18	.444	4-11	.364	2-3	.667	0	4	4	2.4	2	4	7	0	0	22	13.8	
UCLA	1/6/19	*	39	7-14	.500	3-9	.333	4-5	.800	0	2	2	2.4	0	10	2	0	3	21	14.3	
at Arizona State	1/11/19	*	39	3-8	.375	1-3	.333	3-3	1.000	0	4	4	2.5	1	4	4	0	1	10	14.0	
at Arizona	1/13/19	*	25	5-7	.714	3-3	1.000	0-0	.000	0	1	1	2.4	0	7	0	0	0	13	13.9	
Totals			15	497	75-170	.441	38-96	.396	21-29	.724	0	36	36	2.4	17	75	41	0	15	209	13.9

## #24 Hull, Lacie

Opponent	Date	qs	min	Total		3-Pointers		Free throws		Rebounds				pf	a	t/o	blk	stl	pts	avg	
				fg-fga	pct	3fg-fga	pct	ft-fta	pct	off	def	tot	avg								
UC DAVIS	11/7/18		17	1-5	.200	0-3	.000	0-0	.000	0	3	3	3.0	0	0	1	0	2	2	2.0	
IDAHO	11/11/18		12	0-2	.000	0-0	.000	0-0	.000	2	0	2	2.5	3	2	0	1	0	0	1.0	
SAN FRANCISCO	11/15/18		13	2-5	.400	2-4	.500	0-0	.000	0	1	1	2.0	2	0	0	0	0	6	2.7	
vs FGCU	11/23/18		22	1-3	.333	1-2	.500	0-0	.000	1	3	4	2.5	3	4	0	0	2	3	2.8	
vs American	11/24/18		33	0-3	.000	0-1	.000	0-0	.000	0	3	3	2.6	1	0	2	0	7	0	2.2	
at Hawaii	11/25/18		28	3-4	.750	2-3	.667	0-0	.000	0	3	3	2.7	0	6	2	2	3	8	3.2	
at Gonzaga	12/2/18	*	37	2-3	.667	1-2	.500	4-4	1.000	1	0	1	2.4	2	3	1	0	3	9	4.0	
BAYLOR	12/15/18	*	22	1-6	.167	1-3	.333	0-0	.000	2	0	2	2.4	3	0	1	0	1	3	3.9	
at Tennessee	12/18/18	*	32	5-8	.625	4-5	.800	0-0	.000	1	2	3	2.4	3	1	0	1	0	14	5.0	
at Buffalo	12/21/18	*	24	0-1	.000	0-1	.000	0-0	.000	0	5	5	2.7	2	2	2	0	0	0	4.5	
CSUN	12/29/18	*	23	4-7	.571	2-5	.400	0-0	.000	2	2	4	2.8	1	2	1	0	3	10	5.0	
USC	1/4/19	*	36	3-7	.429	1-4	.250	0-0	.000	0	8	8	3.3	3	0	1	1	2	7	5.2	
UCLA	1/6/19	*	38	2-6	.333	1-4	.250	0-0	.000	0	2	2	3.2	0	6	0	0	2	5	5.2	
at Arizona State	1/11/19	*	30	3-5	.600	1-2	.500	1-1	1.000	0	1	1	3.0	1	2	0	0	2	8	5.4	
at Arizona	1/13/19	*	22	0-2	.000	0-2	.000	2-2	1.000	0	1	1	2.9	2	3	1	0	1	2	5.1	
Totals			9	389	27-67	.403	16-41	.390	7-7	1.000	9	34	43	2.9	26	31	12	5	28	77	5.1

## 2018-19 Individual Game-by-Game

## #54 Brown, Jenna

Opponent	Date	gs	min	Total		3-Pointers		Free throws		Rebounds				pf	a	t/o	blk	stl	pts	avg
				fg-fga	pct	3fg-fga	pct	ft-fa	pct	off	def	tot	avg							
UC DAVIS	11/7/18		19	2-2	1.000	0-0	.000	0-2	.000	0	3	3	3.0	1	2	3	0	0	4	4.0
IDAHO	11/11/18		13	3-6	.500	1-4	.250	0-0	.000	0	3	3	3.0	0	3	1	0	0	7	5.5
SAN FRANCISCO	11/15/18		9	1-4	.250	0-1	.000	1-2	.500	0	2	2	2.7	1	0	0	0	0	3	4.7
vs FGCU	11/23/18		4	0-2	.000	0-0	.000	0-0	.000	0	0	0	2.0	0	1	0	0	0	0	3.5
vs American	11/24/18		12	1-4	.250	0-1	.000	2-3	.667	0	3	3	2.2	0	1	0	0	0	4	3.6
at Hawaii	11/25/18		14	0-1	.000	0-1	.000	0-0	.000	0	0	0	1.8	2	0	0	0	0	0	3.0
at Gonzaga	12/2/18		7	0-0	.000	0-0	.000	1-2	.500	0	0	0	1.6	1	1	1	0	0	1	2.7
BAYLOR	12/15/18		8	0-0	.000	0-0	.000	0-0	.000	0	1	1	1.5	0	2	0	0	0	0	2.4
at Tennessee	12/18/18		9	1-4	.250	0-1	.000	1-2	.500	0	1	1	1.4	0	2	0	0	0	3	2.4
at Buffalo	12/21/18		6	0-1	.000	0-0	.000	0-0	.000	0	1	1	1.4	2	1	1	0	0	0	2.2
CSUN	12/29/18		22	1-6	.167	0-0	.000	0-2	.000	2	5	7	1.9	0	3	2	0	0	2	2.2
USC	1/4/19		7	1-2	.500	0-0	.000	0-0	.000	0	0	0	1.8	0	3	1	0	0	2	2.2
UCLA	1/6/19		3	0-1	.000	0-0	.000	0-0	.000	0	0	0	1.6	0	0	1	0	1	0	2.0
at Arizona State	1/11/19		3	0-0	.000	0-0	.000	0-0	.000	0	0	0	1.5	0	0	1	0	0	0	1.9
at Arizona	1/13/19		20	3-5	.600	1-2	.500	2-2	1.000	0	1	1	1.5	1	0	4	0	0	9	2.3
Totals		0	156	13-38	.342	2-10	.200	7-15	.467	2	20	22	1.5	8	19	15	0	1	35	2.3

## Stanford Women's Basketball Individual Career History

### Brewer, Mikaela

Season	gp-gs	min/avg	Total		3-Point		F-Throws			Rebounds				Scoring						
			fg-fga	pct	fg-fga	pct	ft-fa	pct	off	def	tot	avg	pf	fo	ast	to	blk	stl	pts	avg
2016-17	10-0	60/6.0	7-23	.304	5-16	.313	0-0	.000	1	5	6	0.6	3	0	4	7	0	1	19	1.9
2017-18	17-0	31/1.8	2-14	.143	1-9	.111	0-0	.000	0	1	1	0.1	0	0	2	3	0	0	5	0.3
2018-19	7-0	27/3.9	3-8	.375	0-3	.000	3-4	.750	2	2	4	0.6	3	0	0	2	1	1	9	1.3
<b>TOTAL</b>	<b>34-0</b>	<b>118/3.5</b>	<b>12-45</b>	<b>.267</b>	<b>6-28</b>	<b>.214</b>	<b>3-4</b>	<b>.750</b>	<b>3</b>	<b>8</b>	<b>11</b>	<b>0.3</b>	<b>6</b>	<b>0</b>	<b>6</b>	<b>12</b>	<b>1</b>	<b>2</b>	<b>33</b>	<b>1.0</b>

## SINGLE-GAME HIGHS [all-time ranking]:

Points: 6, Cal Poly -- 11/11/16

Rebounds: 2, Cal Poly -- 11/11/16; CSUN -- 12/29/18

Assists: 2, CSUN -- 11/20/16; vs Wichita St. -- 11/25/16

Steals: 1, at Arizona -- 1/13/19; UC Davis -- 12/4/16

Blocks: 1, UC Davis -- 11/7/18; UC Davis -- 11/07/18

FG made: 2, Cal Poly -- 11/11/16; vs Wichita St. -- 11/25/16

FG attempts: 6, CSUN -- 11/20/16; vs Wichita St. -- 11/25/16

3FG made: 2, Cal Poly -- 11/11/16

3FG attempts: 5, vs Wichita St. -- 11/25/16

FT made: 2, San Francisco -- 11/15/18; San Francisco -- 11/15/18

FT attempts: 2, at Arizona -- 1/13/19; San Francisco -- 11/15/18; San Francisco -- 11/15/18

### Brown, Jenna

Season	gp-gs	min/avg	Total		3-Point		F-Throws			Rebounds				Scoring						
			fg-fga	pct	fg-fga	pct	ft-fa	pct	off	def	tot	avg	pf	fo	ast	to	blk	stl	pts	avg
2018-19	15-0	156/10.4	13-38	.342	2-10	.200	7-15	.467	2	20	22	1.5	8	0	19	15	0	1	35	2.3
<b>TOTAL</b>	<b>15-0</b>	<b>156/10.4</b>	<b>13-38</b>	<b>.342</b>	<b>2-10</b>	<b>.200</b>	<b>7-15</b>	<b>.467</b>	<b>2</b>	<b>20</b>	<b>22</b>	<b>1.5</b>	<b>8</b>	<b>0</b>	<b>19</b>	<b>15</b>	<b>0</b>	<b>1</b>	<b>35</b>	<b>2.3</b>

## SINGLE-GAME HIGHS [all-time ranking]:

Points: 9, at Arizona -- 1/13/19

Rebounds: 7, CSUN -- 12/29/18

Assists: 3, 4 times

Steals: 1, UCLA -- 1/6/19

FG made: 3, at Arizona -- 1/13/19; Idaho -- 11/11/18; Idaho -- 11/11/18

FG attempts: 6, Idaho -- 11/11/18; CSUN -- 12/29/18; Idaho -- 11/11/18

3FG made: 1, at Arizona -- 1/13/19; Idaho -- 11/11/18; Idaho -- 11/11/18

3FG attempts: 4, Idaho -- 11/11/18; Idaho -- 11/11/18

FT made: 2, at Arizona -- 1/13/19; vs American -- 11/24/18

FT attempts: 3, vs American -- 11/24/18

### Carrington, DiJonai

Season	gp-gs	min/avg	Total		3-Point		F-Throws			Rebounds				Scoring						
			fg-fga	pct	fg-fga	pct	ft-fa	pct	off	def	tot	avg	pf	fo	ast	to	blk	stl	pts	avg
2016-17	35-0	274/7.8	35-79	.443	5-21	.238	11-19	.579	21	59	80	2.3	36	0	14	24	3	19	86	2.5
2017-18	32-7	721/22.5	107-267	.401	30-107	.280	39-57	.684	51	127	178	5.6	65	0	58	69	7	46	283	8.8
2018-19	15-15	402/26.8	67-144	.465	20-52	.385	47-65	.723	20	90	110	7.3	25	0	24	37	2	21	201	13.4
<b>TOTAL</b>	<b>82-22</b>	<b>1397/17.0</b>	<b>209-490</b>	<b>.427</b>	<b>55-180</b>	<b>.306</b>	<b>97-141</b>	<b>.688</b>	<b>92</b>	<b>276</b>	<b>368</b>	<b>4.5</b>	<b>126</b>	<b>0</b>	<b>96</b>	<b>130</b>	<b>12</b>	<b>86</b>	<b>570</b>	<b>7.0</b>

## SINGLE-GAME HIGHS [all-time ranking]:

Points: 33, at Tennessee -- 12/18/18

Rebounds: 22, UC Riverside -- 11/17/17; UC Riverside -- 11/17/17

Assists: 5, 4 times

Steals: 4, at USC -- 1/19/18

Blocks: 1, 13 times

FG made: 11, UCLA -- 1/6/19; at Tennessee -- 12/18/18

FG attempts: 18, UCLA -- 1/6/19

3FG made: 4, at Tennessee -- 12/18/18

3FG attempts: 8, 5 times

FT made: 12, vs FGCU -- 11/23/18

FT attempts: 15, vs FGCU -- 11/23/18

## Stanford Women's Basketball Individual Career History

### Coffee, Shannon

Season	gp-gs	min/avg	Total		3-Point		F-Throws		Rebounds				Scoring							
			fg-fga	pct	fg-fga	pct	ft-fta	pct	off	def	tot	avg	pf	fo	ast	to	blk	stl	pts	avg
2015-16	12-0	45/3.8	9-21	.429	0-2	.000	3-13	.231	3	10	13	1.1	3	0	1	7	1	0	21	1.8
2016-17	20-0	86/4.3	17-27	.630	1-4	.250	9-17	.529	4	17	21	1.1	9	0	3	10	3	2	44	2.2
2017-18	27-2	112/4.1	12-38	.316	7-20	.350	1-2	.500	5	19	24	0.9	12	0	6	14	4	3	32	1.2
2018-19	15-0	114/7.6	11-25	.440	4-13	.308	2-2	1.000	7	13	20	1.3	5	0	9	5	3	4	28	1.9
<b>TOTAL</b>	<b>74-2</b>	<b>357/4.8</b>	<b>49-111</b>	<b>.441</b>	<b>12-39</b>	<b>.308</b>	<b>15-34</b>	<b>.441</b>	<b>19</b>	<b>59</b>	<b>78</b>	<b>1.1</b>	<b>29</b>	<b>0</b>	<b>19</b>	<b>36</b>	<b>11</b>	<b>9</b>	<b>125</b>	<b>1.7</b>

## SINGLE-GAME HIGHS [all-time ranking]:

Points: 14, at Baylor -- 12/3/17

Rebounds: 7, vs Wichita St. -- 11/25/16

Assists: 3, UNLV -- 12/16/17

Steals: 2, at Arizona State -- 1/11/19

Blocks: 1, 12 times

FG made: 5, vs Wichita St. -- 11/25/16; at Baylor -- 12/3/17

FG attempts: 11, at Baylor -- 12/3/17

3FG made: 4, at Baylor -- 12/3/17

3FG attempts: 8, at Baylor -- 12/3/17

FT made: 3, vs Northeastern -- 11/24/16; vs Wichita St. -- 11/25/16

FT attempts: 10, CSU Bakersfield -- 12/22/15

### Dodson, Maya

Season	gp-gs	min/avg	Total		3-Point		F-Throws		Rebounds				Scoring							
			fg-fga	pct	fg-fga	pct	ft-fta	pct	off	def	tot	avg	pf	fo	ast	to	blk	stl	pts	avg
2017-18	33-4	372/11.3	51-103	.495	0-0	.000	13-33	.394	32	35	67	2.0	38	1	5	26	27	2	115	3.5
2018-19	11-0	239/21.7	44-81	.543	0-0	.000	11-22	.500	24	22	46	4.2	22	0	16	10	19	5	99	9.0
<b>TOTAL</b>	<b>44-4</b>	<b>611/13.9</b>	<b>95-184</b>	<b>.516</b>	<b>0-0</b>	<b>.000</b>	<b>24-55</b>	<b>.436</b>	<b>56</b>	<b>57</b>	<b>113</b>	<b>2.6</b>	<b>60</b>	<b>1</b>	<b>21</b>	<b>36</b>	<b>46</b>	<b>7</b>	<b>214</b>	<b>4.9</b>

## SINGLE-GAME HIGHS [all-time ranking]:

Points: 16, CSUN -- 12/29/18

Rebounds: 9, at Tennessee -- 12/18/18

Assists: 6, San Francisco -- 11/15/18; San Francisco -- 11/15/18

Steals: 2, UC Davis -- 11/7/18; UC Davis -- 11/07/18

Blocks: 4, San Francisco -- 11/15/18; Western Illinois -- 12/18/17; San Francisco -- 11/15/18

FG made: 8, CSUN -- 12/29/18

FG attempts: 17, CSUN -- 12/29/18

FT made: 3, Baylor -- 12/15/18; at Buffalo -- 12/21/18

FT attempts: 5, San Francisco -- 11/15/18; at Gonzaga -- 12/2/18; San Francisco -- 11/15/18

### Fingall, Nadia

Season	gp-gs	min/avg	Total		3-Point		F-Throws		Rebounds				Scoring							
			fg-fga	pct	fg-fga	pct	ft-fta	pct	off	def	tot	avg	pf	fo	ast	to	blk	stl	pts	avg
2016-17	36-8	419/11.6	67-132	.508	2-13	.154	19-37	.514	42	51	93	2.6	52	0	22	30	13	13	155	4.3
2017-18	34-0	398/11.7	41-92	.446	13-31	.419	18-26	.692	32	75	107	3.1	52	1	19	22	13	16	113	3.3
2018-19	12-12	244/20.3	40-80	.500	5-17	.294	11-21	.524	28	31	59	4.9	23	0	20	16	5	5	96	8.0
<b>TOTAL</b>	<b>82-20</b>	<b>1061/12.9</b>	<b>148-304</b>	<b>.487</b>	<b>20-61</b>	<b>.328</b>	<b>48-84</b>	<b>.571</b>	<b>102</b>	<b>157</b>	<b>259</b>	<b>3.2</b>	<b>127</b>	<b>1</b>	<b>61</b>	<b>68</b>	<b>31</b>	<b>34</b>	<b>364</b>	<b>4.4</b>

## SINGLE-GAME HIGHS [all-time ranking]:

Points: 24, vs FGCU -- 11/23/18

Rebounds: 8, 5 times

Assists: 5, vs FGCU -- 11/23/18

Steals: 3, Utah -- 2/12/17

Blocks: 2, 6 times

FG made: 11, vs FGCU -- 11/23/18

FG attempts: 14, vs FGCU -- 11/23/18

3FG made: 2, 4 times

3FG attempts: 4, vs American -- 11/24/18; at Baylor -- 12/3/17

FT made: 4, at Arizona -- 1/1/17

FT attempts: 5, Idaho -- 11/11/18; at George Washington -- 12/21/16; Idaho -- 11/11/18

## Stanford Women's Basketball Individual Career History

### Hull, Lacie

Season	gp-gs	min/avg	Total		3-Point		F-Throws		Rebounds				Scoring							
			fg-fga	pct	fg-fga	pct	ft-fta	pct	off	def	tot	avg	pf	fo	ast	to	blk	stl	pts	avg
2018-19	15-9	389/25.9	27-67	.403	16-41	.390	7-7	1.000	9	34	43	2.9	26	0	31	12	5	28	77	5.1
TOTAL	15-9	389/25.9	27-67	.403	16-41	.390	7-7	1.000	9	34	43	2.9	26	0	31	12	5	28	77	5.1

## SINGLE-GAME HIGHS [all-time ranking]:

Points: 14, at Tennessee -- 12/18/18

Rebounds: 8, USC -- 1/4/19

Assists: 6, UCLA -- 1/6/19; at Hawaii -- 11/25/18

Steals: 7, vs American -- 11/24/18

Blocks: 2, at Hawaii -- 11/25/18

FG made: 5, at Tennessee -- 12/18/18

FG attempts: 8, at Tennessee -- 12/18/18

3FG made: 4, at Tennessee -- 12/18/18

3FG attempts: 5, at Tennessee -- 12/18/18; CSUN -- 12/29/18

FT made: 4, at Gonzaga -- 12/2/18

FT attempts: 4, at Gonzaga -- 12/2/18

### Hull, Lexie

Season	gp-gs	min/avg	Total		3-Point		F-Throws		Rebounds				Scoring							
			fg-fga	pct	fg-fga	pct	ft-fta	pct	off	def	tot	avg	pf	fo	ast	to	blk	stl	pts	avg
2018-19	6-3	114/19.0	16-37	.432	8-19	.421	4-4	1.000	16	18	34	5.7	14	0	3	9	4	8	44	7.3
TOTAL	6-3	114/19.0	16-37	.432	8-19	.421	4-4	1.000	16	18	34	5.7	14	0	3	9	4	8	44	7.3

## SINGLE-GAME HIGHS [all-time ranking]:

Points: 17, Idaho -- 11/11/18; Idaho -- 11/11/18

Rebounds: 11, UC Davis -- 11/7/18; UC Davis -- 11/07/18

Assists: 3, San Francisco -- 11/15/18; San Francisco -- 11/15/18

Steals: 4, UC Davis -- 11/7/18; UC Davis -- 11/07/18

Blocks: 2, Idaho -- 11/11/18; Idaho -- 11/11/18

FG made: 6, Idaho -- 11/11/18; Idaho -- 11/11/18

FG attempts: 12, Idaho -- 11/11/18; Idaho -- 11/11/18

3FG made: 5, Idaho -- 11/11/18; Idaho -- 11/11/18

3FG attempts: 10, Idaho -- 11/11/18; Idaho -- 11/11/18

FT made: 2, at Arizona State -- 1/11/19; San Francisco -- 11/15/18; San Francisco -- 11/15/18

FT attempts: 2, at Arizona State -- 1/11/19; San Francisco -- 11/15/18; San Francisco -- 11/15/18

### Jerome, Alyssa

Season	gp-gs	min/avg	Total		3-Point		F-Throws		Rebounds				Scoring							
			fg-fga	pct	fg-fga	pct	ft-fta	pct	off	def	tot	avg	pf	fo	ast	to	blk	stl	pts	avg
2017-18	34-1	337/9.9	28-70	.400	9-31	.290	4-6	.667	11	25	36	1.1	27	0	14	22	3	1	69	2.0
2018-19	15-3	218/14.5	15-43	.349	6-15	.400	11-15	.733	9	37	46	3.1	21	0	9	13	4	2	47	3.1
TOTAL	49-4	555/11.3	43-113	.381	15-46	.326	15-21	.714	20	62	82	1.7	48	0	23	35	7	3	116	2.4

## SINGLE-GAME HIGHS [all-time ranking]:

Points: 8, at Ohio State -- 11/10/17; at Ohio State -- 11/10/17

Rebounds: 8, UC Davis -- 11/07/18; UC Davis -- 11/7/18

Assists: 2, 7 times

Steals: 1, at USC -- 1/19/18; at Hawaii -- 11/25/18; at Buffalo -- 12/21/18

Blocks: 2, San Francisco -- 11/15/18; San Francisco -- 11/15/18; UNLV -- 12/16/17

FG made: 3, 4 times

FG attempts: 6, vs Kent State -- 11/23/17; vs Kent State -- 11/23/17

3FG made: 2, 4 times

3FG attempts: 4, vs Kent State -- 11/23/17; vs Kent State -- 11/23/17

FT made: 4, at Hawaii -- 11/25/18

FT attempts: 6, at Hawaii -- 11/25/18

## Stanford Women's Basketball Individual Career History

### Moschkau, Estella

Season	gp-gs	min/avg	Total		3-Point		F-Throws		Rebounds				Scoring							
			fg-fga	pct	fg-fga	pct	ft-fla	pct	off	def	tot	avg	pf	fo	ast	to	blk	stl	pts	avg
2017-18	23-0	49/2.1	4-9	.444	3-7	.429	1-2	.500	2	2	4	0.2	4	0	2	0	0	0	12	0.5
2018-19	9-0	41/4.6	5-6	.833	4-5	.800	0-0	.000	1	4	5	0.6	5	0	3	6	0	2	14	1.6
<b>TOTAL</b>	<b>32-0</b>	<b>90/2.8</b>	<b>9-15</b>	<b>.600</b>	<b>7-12</b>	<b>.583</b>	<b>1-2</b>	<b>.500</b>	<b>3</b>	<b>6</b>	<b>9</b>	<b>0.3</b>	<b>9</b>	<b>0</b>	<b>5</b>	<b>6</b>	<b>0</b>	<b>2</b>	<b>26</b>	<b>0.8</b>

## SINGLE-GAME HIGHS [all-time ranking]:

Points: 5, San Francisco -- 11/15/18; San Francisco -- 11/15/18  
 Rebounds: 2, at Arizona -- 1/13/19; at Arizona -- 1/5/18; CSUN -- 12/29/18  
 Assists: 1, 7 times  
 Steals: 2, at Hawaii -- 11/25/18  
 FG made: 2, San Francisco -- 11/15/18; San Francisco -- 11/15/18  
 FG attempts: 2, 6 times  
 3FG made: 1, 10 times  
 3FG attempts: 2, CSU Bakersfield -- 11/19/17; CSU Bakersfield -- 11/19/17; CSUN -- 12/29/18  
 FT made: 1, Arizona -- 1/28/18  
 FT attempts: 2, Arizona -- 1/28/18

### Smith, Alanna

Season	gp-gs	min/avg	Total		3-Point		F-Throws		Rebounds				Scoring							
			fg-fga	pct	fg-fga	pct	ft-fla	pct	off	def	tot	avg	pf	fo	ast	to	blk	stl	pts	avg
2015-16	34-0	400/11.8	67-155	.432	20-60	.333	29-44	.659	28	52	80	2.4	63	1	13	43	24	5	183	5.4
2016-17	38-3	735/19.3	133-286	.465	19-60	.317	62-90	.689	66	141	207	5.4	88	4	34	42	61	25	347	9.1
2017-18	35-35	995/28.4	198-418	.474	35-116	.302	43-81	.531	92	154	246	7.0	96	2	41	88	62	45	474	13.5
2018-19	15-15	405/27.0	108-198	.545	39-80	.488	41-55	.745	27	87	114	7.6	43	2	38	38	36	14	296	19.7
<b>TOTAL</b>	<b>122-53</b>	<b>2535/20.8</b>	<b>506-1057</b>	<b>.479</b>	<b>113-316</b>	<b>.358</b>	<b>175-270</b>	<b>.648</b>	<b>213</b>	<b>434</b>	<b>647</b>	<b>5.3</b>	<b>290</b>	<b>9</b>	<b>126</b>	<b>211</b>	<b>183</b>	<b>89</b>	<b>1300</b>	<b>10.7</b>

## SINGLE-GAME HIGHS [all-time ranking]:

Points: 33, vs Ohio State -- 11/25/17  
 Rebounds: 16, vs Ohio State -- 11/25/17  
 Assists: 5, at Buffalo -- 12/21/18  
 Steals: 6, at California -- 2/17/18  
 Blocks: 7, at Arizona -- 1/13/19  
 FG made: 14, vs Ohio State -- 11/25/17  
 FG attempts: 24, Western Illinois -- 12/18/17; at California -- 2/17/18  
 3FG made: 6, vs Dayton -- 11/28/15  
 3FG attempts: 11, at California -- 2/17/18  
 FT made: 7, UC Davis -- 11/07/18; UC Davis -- 11/7/18  
 FT attempts: 8, Baylor -- 12/15/18; Cornell -- 12/19/15; at California -- 2/16/17

### Sniezek, Marta

Season	gp-gs	min/avg	Total		3-Point		F-Throws		Rebounds				Scoring							
			fg-fga	pct	fg-fga	pct	ft-fla	pct	off	def	tot	avg	pf	fo	ast	to	blk	stl	pts	avg
2015-16	35-9	656/18.7	35-99	.354	4-17	.235	28-42	.667	8	48	56	1.6	27	0	109	63	1	21	102	2.9
2016-17	38-9	948/24.9	56-149	.376	6-20	.300	54-75	.720	6	100	106	2.8	64	0	169	93	3	51	172	4.5
2017-18	35-32	971/27.7	56-156	.359	20-59	.339	61-90	.678	7	115	122	3.5	68	1	150	78	3	38	193	5.5
<b>TOTAL</b>	<b>108-50</b>	<b>2575/23.8</b>	<b>147-404</b>	<b>.364</b>	<b>30-96</b>	<b>.313</b>	<b>143-207</b>	<b>.691</b>	<b>21</b>	<b>263</b>	<b>284</b>	<b>2.6</b>	<b>159</b>	<b>1</b>	<b>428</b>	<b>234</b>	<b>7</b>	<b>110</b>	<b>467</b>	<b>4.3</b>

## SINGLE-GAME HIGHS [all-time ranking]:

Points: 13, Arizona State -- 1/26/18; at Washington -- 2/23/18  
 Rebounds: 10, USC -- 12/31/17  
 Assists: 13, vs Washington -- 3/4/16  
 Steals: 6, Oregon State -- 1/8/17  
 Blocks: 1, 7 times  
 FG made: 5, Arizona State -- 1/26/18; vs Notre Dame -- 3/25/16  
 FG attempts: 12, vs Belmont -- 11/24/17  
 3FG made: 3, at Arizona State -- 1/7/18; Utah -- 2/9/18  
 3FG attempts: 8, vs Belmont -- 11/24/17  
 FT made: 6, UC Riverside -- 11/17/17; UC Riverside -- 11/17/17; vs USC -- 3/2/18  
 FT attempts: 9, Tennessee -- 12/16/15

## Stanford Women's Basketball Individual Career History

Williams, Kiana

Season	gp-gs	min/avg	Total		3-Point		F-Throws		Rebounds				Scoring							
			fg-fga	pct	fg-fga	pct	ft-fta	pct	off	def	tot	avg	pf	fo	ast	to	blk	stl	pts	avg
2017-18	35-26	899/25.7	128-309	.414	71-185	.384	36-44	.818	4	54	58	1.7	38	0	67	40	5	30	363	10.4
2018-19	15-15	497/33.1	75-170	.441	38-96	.396	21-29	.724	0	36	36	2.4	17	0	75	41	0	15	209	13.9
<b>TOTAL</b>	<b>50-41</b>	<b>1396/27.9</b>	<b>203-479</b>	<b>.424</b>	<b>109-281</b>	<b>.388</b>	<b>57-73</b>	<b>.781</b>	<b>4</b>	<b>90</b>	<b>94</b>	<b>1.9</b>	<b>55</b>	<b>0</b>	<b>142</b>	<b>81</b>	<b>5</b>	<b>45</b>	<b>572</b>	<b>11.4</b>

## SINGLE-GAME HIGHS [all-time ranking]:

Points: 26, California -- 2/15/18

Rebounds: 6, vs FGCU -- 11/23/18; Utah -- 2/9/18

Assists: 10, UCLA -- 1/6/19

Steals: 4, California -- 2/15/18

Blocks: 1, 6 times

FG made: 9, vs Arizona State -- 3/3/18

FG attempts: 18, USC -- 1/4/19

3FG made: 6, vs Arizona State -- 3/3/18

3FG attempts: 11, 4 times

FT made: 7, California -- 2/15/18

FT attempts: 9, California -- 2/15/18

Wilson, Anna

Season	gp-gs	min/avg	Total		3-Point		F-Throws		Rebounds				Scoring							
			fg-fga	pct	fg-fga	pct	ft-fta	pct	off	def	tot	avg	pf	fo	ast	to	blk	stl	pts	avg
2016-17	6-0	48/8.0	6-13	.462	4-8	.500	1-3	.333	0	6	6	1.0	4	0	5	7	0	3	17	2.8
2017-18	21-2	224/10.7	24-81	.296	20-69	.290	2-4	.500	1	22	23	1.1	22	0	8	13	1	10	70	3.3
2018-19	11-3	112/10.2	11-31	.355	4-21	.190	5-6	.833	3	14	17	1.5	12	0	8	6	0	9	31	2.8
<b>TOTAL</b>	<b>38-5</b>	<b>384/10.1</b>	<b>41-125</b>	<b>.328</b>	<b>28-98</b>	<b>.286</b>	<b>8-13</b>	<b>.615</b>	<b>4</b>	<b>42</b>	<b>46</b>	<b>1.2</b>	<b>38</b>	<b>0</b>	<b>21</b>	<b>26</b>	<b>1</b>	<b>22</b>	<b>118</b>	<b>3.1</b>

## SINGLE-GAME HIGHS [all-time ranking]:

Points: 21, vs Ohio State -- 11/25/17

Rebounds: 6, Western Illinois -- 12/18/17

Assists: 3, vs FGCU -- 11/23/18

Steals: 3, Western Illinois -- 12/18/17

Blocks: 1, CSU Bakersfield -- 11/19/17; CSU Bakersfield -- 11/19/17

FG made: 7, vs Ohio State -- 11/25/17

FG attempts: 17, Western Illinois -- 12/18/17

3FG made: 7, vs Ohio State -- 11/25/17

3FG attempts: 15, Western Illinois -- 12/18/17

FT made: 2, 4 times

FT attempts: 3, at Arizona -- 1/1/17

**Official Basketball Box Score -- Game Totals -- Final Statistics**  
**UC Davis vs Stanford**  
**11/7/18 7:00 PM at Stanford, Calif. (Maples Pavilion)**

**UC Davis 43 • 0-1**

#	Player	Total			Rebounds			PF	TP	A	TO	Bk	Stl	Min
		FG-FGA	3P-FGA	FT-FTA	Off	Def	Tot							
05	Nina Bessolo	3-11	2-8	3-5	0	4	4	2	11	0	2	1	2	19
22	Morgan Bertsch	5-15	2-2	4-8	2	3	5	3	16	1	6	2	2	33
32	Jerry Hall	1-7	0-4	0-0	3	1	4	1	2	0	2	0	1	27
02	Kourtney Eaton	1-9	1-5	0-0	1	0	1	3	2	4	0	1	3	15
03	Karley Eaton	0-3	0-2	0-0	0	2	3	0	2	1	0	3	1	15
10	Ciera McKeown	2-8	2-5	0-0	0	0	0	6	1	0	0	0	3	19
11	Sage Stobbart	1-5	0-0	0-0	0	3	2	2	0	1	0	0	0	17
13	Katie Toole	0-2	0-0	0-0	0	0	0	0	0	0	0	0	0	10
15	Kaitlyn Hsu	0-0	0-0	0-0	0	0	0	0	0	0	1	0	0	3
20	Makaila Sanders	1-1	1-1	0-0	0	0	0	3	0	0	0	0	0	3
21	Sophia Song	0-1	0-1	0-0	0	1	1	0	0	1	0	0	0	9
23	Kayla Konrad	0-0	0-0	0-0	0	4	4	0	0	0	0	0	1	10
Team					0	1	1							
Totals		14-62	8-31	7-13	6	19	25	17	43	6	18	3	13	200

1st FG %: 5-17 29.4% 2nd: 2-13 15.4% 3rd: 3-17 17.6% 4th: 4-15 26.7% Game: 14-62 22.6% Deadball Rebounds: 7,3  
 3FG %: 3-10 30.0% 2-7 28.6% 1-1 100.0% 4-6 66.7% 2-3 66.7% 0-2 0.0% 7-13 53.8% FT %: 1-2 50.0% 4-6 66.7% 2-3 66.7%

**Stanford 71 • 1-0**

#	Player	Total			Rebounds			PF	TP	A	TO	Bk	Stl	Min
		FG-FGA	3P-FGA	FT-FTA	Off	Def	Tot							
04	Fingall, Nadia	0-1	0-0	2-2	1	3	4	3	2	0	3	0	0	16
11	Smith, Alanna	4-7	1-2	7-7	1	1	2	4	16	1	4	1	1	15
12	Hull, Lexie	5-10	1-4	0-0	3	8	11	3	11	0	2	1	4	27
21	Carrington, DJonai	0-6	0-2	0-0	0	2	2	2	0	1	1	0	2	13
23	Williams, Kiana	5-8	3-5	1-2	0	1	1	0	14	3	2	0	0	18
02	Coffee, Shannon	0-1	0-0	0-0	1	0	1	0	1	1	0	0	0	6
03	Wilson, Anna	0-4	0-4	0-0	0	5	1	0	1	1	0	0	1	13
10	Jerome, Alyssa	2-5	0-1	2-2	2	6	8	6	0	1	0	0	0	16
14	Brewer, Mikaela	0-1	0-1	0-0	0	0	0	0	0	0	1	0	2	2
15	Dodson, Maya	5-8	0-0	2-4	2	6	3	10	1	1	3	2	2	25
20	Moschkau, Estella	0-0	0-0	0-0	0	0	0	0	0	0	0	0	0	4
22	Romano, Alexa	2-3	1-2	1-1	0	2	2	0	6	0	1	0	0	9
24	Hull, Lacie	1-5	0-3	0-0	0	3	3	0	2	0	1	0	2	17
54	Brown, Jenna	2-2	0-0	0-2	0	3	3	1	4	2	3	0	0	19
Team					0	2	2							
Totals		26-61	6-24	13-18	12	38	50	18	71	10	21	6	12	200

1st FG %: 6-17 35.3% 2nd: 6-14 42.9% 3rd: 8-15 53.3% 4th: 6-15 40.0% Game: 26-61 42.6% Deadball Rebounds: 6,3  
 3FG %: 0-6 0.0% 3-6 50.0% 2-6 33.3% 1-9 16.7% 4-6 66.7% 1-1 100.0% 13-18 72.2% FT %: 5-10 50.0% 4-4 100.0% 3-3 100.0% 1-1 100.0%

Officials: Richard Waters, Teresa Turner, Melissa Barlow  
 Technical fouls: UC Davis-None, Stanford-None.  
 Attendance: 2471

Score by periods	1st	2nd	3rd	4th	Total
UC Davis	14	10	9	4	43
Stanford	17	19	21	14	71

Points In Off 2nd Fast  
 UC Davis 12 Paint T/O Chance Break 3 11  
 Stanford 38 13 12 11 28

Last FG - UC Davis 4th-00:13, Stanford 4th-02:11.  
 Largest lead - UC Davis by 11 09:15, Stanford by 33 4th-02:11.  
 UC Davis led for 01:13, Stanford led for 38:02. Game was tied for 00:45.  
 Score tied - 1 time.  
 Lead changed - 1 time.

**Official Basketball Box Score -- Game Totals -- Final Statistics**  
**Idaho vs Stanford**  
**11/11/18 2:00 PM at Stanford, Calif. (Maples Pavilion)**

**Idaho 71 • 1-1**

#	Player	Total			Rebounds			PF	TP	A	TO	Bk	Stl	Min
		FG-FGA	3P-FGA	FT-FTA	Off	Def	Tot							
42	Klinker, Natalie	0-0	0-0	0-2	1	1	2	3	0	0	2	0	0	13
14	Pierce, Taylor	2-8	1-3	0-0	0	0	0	0	5	1	0	0	0	26
20	Kirby, Allison	1-3	0-0	0-0	0	1	1	2	2	1	3	0	0	25
21	Ferez, Mikayla	1-7	1-3	0-0	0	4	4	1	3	4	3	0	1	26
23	Marxen, Gina	7-11	5-6	3-4	0	3	3	0	22	4	7	0	0	34
03	Carlston, Nina	1-3	1-1	1-4	0	3	3	4	4	0	1	0	0	10
04	Christopher, Hailey	3-5	0-0	0-0	0	2	2	3	6	3	0	1	0	19
11	Hadden, Isabelle	3-7	0-0	2-3	0	0	0	4	8	0	0	1	1	11
22	King, Janie	6-13	6-10	0-0	1	3	4	3	18	0	0	0	2	28
32	Milne, Chayse	1-2	1-1	0-0	0	0	0	0	3	1	0	0	0	8
Team					0	1	1							
Totals		25-59	15-24	6-13	2	18	20	20	71	14	16	2	4	200

1st FG %: 7-12 58.3% 2nd: 5-16 31.3% 3rd: 8-18 44.4% 4th: 5-13 38.5% Game: 25-59 42.4% Deadball Rebounds: 7,1  
 3FG %: 4-7 57.1% 4-6 66.7% 5-7 71.4% 2-4 50.0% 15-24 62.5% FT %: 1-1 100.0% 0-0 0.0% 2-2 100.0% 3-10 30.0% 6-13 46.2%

**Stanford 115 • 2-0**

#	Player	Total			Rebounds			PF	TP	A	TO	Bk	Stl	Min
		FG-FGA	3P-FGA	FT-FTA	Off	Def	Tot							
04	Fingall, Nadia	7-9	0-0	2-5	3	5	8	1	16	2	1	2	0	20
11	Smith, Alanna	8-12	2-5	1-1	4	5	9	0	19	4	3	1	2	24
12	Hull, Lexie	6-12	5-10	0-0	2	3	5	3	17	0	0	2	2	25
21	Carrington, DJonai	2-8	1-4	1-2	3	1	4	0	6	1	0	0	0	11
23	Williams, Kiana	7-10	4-7	1-1	0	3	3	1	19	2	0	1	2	28
02	Coffee, Shannon	1-1	0-0	0-0	0	1	1	1	2	0	0	0	0	6
03	Wilson, Anna	3-8	2-6	2-2	1	0	1	2	10	1	0	0	2	11
10	Jerome, Alyssa	1-2	0-1	2-2	0	6	6	4	2	1	0	0	0	13
14	Brewer, Mikaela	1-2	0-1	0-0	0	0	0	0	2	0	1	0	0	5
15	Dodson, Maya	5-8	0-0	0-0	3	2	5	2	10	0	0	1	1	19
20	Moschkau, Estella	1-1	1-1	0-0	0	0	0	0	3	1	1	0	0	6
22	Romano, Alexa	0-3	0-2	0-0	0	0	0	0	2	0	1	0	0	7
24	Hull, Lacie	0-2	0-0	0-0	0	2	2	3	0	2	0	1	0	12
54	Brown, Jenna	3-6	1-4	0-0	0	3	3	0	7	3	1	0	0	13
Team					2	0	2							
Totals		45-84	16-41	9-13	20	29	49	19	115	26	10	7	8	200

1st FG %: 12-23 52.2% 2nd: 10-22 45.5% 3rd: 15-22 68.2% 4th: 8-17 47.1% Game: 45-84 53.6% Deadball Rebounds: 4,3  
 3FG %: 4-12 33.3% 3-6 50.0% 6-12 50.0% 3-11 27.3% 16-41 39.0% FT %: 0-0 0.0% 5-7 71.4% 4-6 66.7% 0-0 0.0% 9-13 69.2%

Officials: Rochelle Bennett, Benny Luna, Robert Scofield  
 Technical fouls: Idaho-None, Stanford-None.  
 Attendance: 2582

Score by periods	1st	2nd	3rd	4th	Total
Idaho	19	14	23	15	71
Stanford	28	28	40	19	115

Points In Off 2nd Fast  
 Idaho 14 Paint T/O Chance Break 3 11  
 Stanford 28 27 18 8 38

Last FG - IDAHO 4th-00:28, STAN 4th-00:40.  
 Largest lead - IDAHO None, STAN by 47 4th-00:40.  
 IDAHO led for 00:00, STAN led for 39:44. Game was tied for 00:16.  
 Score tied - 0 times.  
 Lead changed - 0 times.

**Official Basketball Box Score -- Game Totals -- Final Statistics**  
**San Francisco vs Stanford**  
**11/15/18 7:00 PM at Stanford, Calif. (Maples Pavilion)**

**San Francisco 62 • 1-1**

#	Player	Total			Rebounds			PF	TP	A	TO	Bk	Stl	Min
		FG-FGA	3P-FGA	FT-FTA	Off	Def	Tot							
12	Lundqvist, Moa	0-3	0-2	0-0	0	1	1	3	0	1	1	0	1	16
24	Kostic, Lucija	0-5	0-0	2-2	2	2	4	4	2	1	2	0	1	23
13	Alexander, Nia	1-6	0-0	0-0	1	1	2	0	2	0	0	0	0	20
23	Preciado, Veronica	4-7	1-2	2-4	0	3	2	11	0	1	0	1	0	20
33	Powell, Shannon	4-10	1-4	1-2	2	5	7	1	10	3	3	0	0	27
02	Vaalavirta, Kia	1-7	0-3	4-6	0	3	3	1	6	3	0	0	0	28
03	Galic, Marta	2-2	0-0	0-0	0	2	2	1	4	1	2	0	1	15
32	Nielacna, Julia	5-16	2-4	3-3	2	4	6	2	15	1	3	0	0	25
55	Rathbun, Abby	3-4	1-1	5-6	2	0	2	4	12	0	0	0	0	26
Team					4	5	9							
Totals		20-60	5-16	17-23	13	26	39	18	62	8	14	0	4	200

1st FG %: 3-13 23.1% 2nd: 7-17 41.2% 3rd: 4-16 25.0% 4th: 6-14 42.9% Game: 20-60 33.3% Deadball Rebounds: 7,2  
 3FG %: 1-5 20.0% 3-6 50.0% 4-4 100.0% 0-1 0.0% 5-16 31.3% 17-23 73.9% FT %: 5-6 83.3% 4-7 57.1% 4-6 66.7%

**Stanford 96 • 3-0**

#	Player	Total			Rebounds			PF	TP	A	TO	Bk	Stl	Min
		FG-FGA	3P-FGA	FT-FTA	Off	Def	Tot							
04	Fingall, Nadia	3-6	1-3	0-0	2	1	3	3	7	2	1	0	0	13
11	Smith, Alanna	6-12	5-8	1-2	0	7	7	1	18	3	1	4	1	26
12	Hull, Lexie	1-5	0-1	2-2	4	1	5	2	4	3	2	0	2	25
21	Carrington, DJonai	4-7	1-4	0-0	1	4	5	1	9	4	2	0	0	18
23	Williams, Kiana	8-13	4-6	1-1	0	0	0	1	21	3	2	0	0	26
02	Coffee, Shannon	0-1	0-1	0-0	0	0	0	0	2	0	1	0	0	8
03	Wilson, Anna	1-3	0-1	0-0	0	0	0	2	2	0	0	0	1	13
10	Jerome, Alyssa	3-4	1-2	0-1	0	2	2	7	0	0	2	0	0	16
14	Brewer, Mikaela	1-1	0-0	2-2	0	1	1	4	0	0	0	0	0	4
15	Dodson, Maya	4-7	0-0	2-5	0	3	3	2	10	6	0	4	0	19
20	Moschkau, Estella	2-2	1-1	0-0	1	0	1	0	5	1	1	0	0	5
22	Romano, Alexa	0-0	0-0	0-0	0	0	0	1						



**Official Basketball Box Score -- Game Totals -- Final Statistics**  
**American vs Stanford**  
**11/24/18 12:00 PM at Honolulu, O'ahu (Stan Sheriff Center)**

**American 49 • 3-2**

#	Player	Total			3-Ptr			Rebounds			PF	TP	A	TO	Blk	Stl	Min
		FG-FGA	FG-FGA	FT-FTA	FG-FGA	FG-FGA	FT-FTA	Off	Def	Tot							
44	Carl, Cecily	f	3-6	0-0	2-2	0	7	7	5	8	1	2	0	0	0	23	
03	Lewis, Kaitlyn	g	5-12	1-3	1-1	1	2	3	1	12	3	4	0	0	0	36	
12	Sanders, Indeya	g	1-4	1-4	0-0	0	2	2	0	3	2	2	0	0	1	26	
22	Marenyl, Katie	g	3-7	0-1	5-8	1	2	3	2	11	2	1	0	1	32		
23	Koskimies, Elna	g	4-8	1-1	4-4	1	2	3	2	13	1	1	0	0	33		
02	Bartner, Morgan	g	0-3	0-2	0-0	1	0	1	0	0	3	0	0	1	21		
04	Fisher, Emily	g	0-0	0-0	0-0	0	1	1	2	0	0	2	0	0	8		
10	Edwards, Jade	g	0-0	0-0	0-0	0	2	2	4	0	1	1	0	0	8		
11	Cleveland, TaeKenya	g	1-4	0-1	0-0	0	1	1	1	2	0	0	0	0	8		
14	Brown, Taylor	g	0-2	0-0	0-0	0	0	0	1	0	0	0	0	0	3		
21	Doring, Maddie	g	0-0	0-0	0-0	0	0	0	0	0	0	0	0	0	1		
24	Graytok, Laura	g	0-0	0-0	0-0	0	0	0	0	0	0	0	0	0	1		
Team						0	2	2									
Totals			17-46	3-12	12-15	4	21	25	19	49	10	16	1	3	200		

1st FG %:	3-12	25.0%	2nd:	6-14	42.9%	3rd:	5-8	62.5%	4th:	3-12	25.0%	Game:	17-46	37.0%	Deadball	
3FG %:	0-3	0.0%	1-3:	33.3%	1-2:	50.0%	1-4:	25.0%	3-3:	100.0%	12-15:	80.0%			Rebounds	3
FT %:	4-6	66.7%	0-0:	0.0%	5-6:	83.3%										

**Stanford 71 • 5-0**

#	Player	Total			3-Ptr			Rebounds			PF	TP	A	TO	Blk	Stl	Min
		FG-FGA	FG-FGA	FT-FTA	FG-FGA	FG-FGA	FT-FTA	Off	Def	Tot							
04	Fingall, Nadia	f	3-8	1-4	3-4	4	1	5	3	10	2	1	0	1	24		
11	Smith, Alanna	f	10-18	3-6	2-3	1	7	8	1	25	4	3	1	2	31		
03	Wilson, Anna	g	0-0	0-0	0-0	1	0	1	3	0	2	0	0	0	5		
21	Carrington, Dijonai	g	6-7	0-0	1-1	2	5	7	2	13	1	1	0	2	22		
23	Williams, Kiana	g	3-12	2-6	1-2	0	0	0	2	9	7	3	0	0	33		
02	Coffee, Shannon	g	1-3	1-2	0-0	0	1	1	0	3	0	0	0	0	4		
10	Jerome, Alyssa	g	0-2	0-1	3-4	2	1	3	2	3	2	1	0	0	12		
15	Dodson, Maya	g	2-4	0-0	0-0	1	2	3	1	4	1	1	0	0	18		
20	Moschkau, Estella	g	0-0	0-0	0-0	0	0	0	0	0	0	0	0	0	2		
22	Romano, Alexa	g	0-1	0-1	0-0	0	0	0	1	0	0	0	0	0	4		
24	Hull, Lacie	g	0-3	0-1	0-0	0	3	3	1	0	0	2	0	7	33		
54	Brown, Jenna	g	1-4	0-1	2-3	0	3	3	0	4	1	0	0	0	12		
Team						4	2	6									
Totals			26-62	7-22	12-17	15	25	40	16	71	18	12	2	12	200		

1st FG %:	6-18	33.3%	2nd:	4-13	30.8%	3rd:	7-16	43.8%	4th:	9-15	60.0%	Game:	26-62	41.9%	Deadball	
3FG %:	3-8	37.5%	1-4:	25.0%	0-5:	0.0%	3-5:	60.0%	7-22:	31.8%					Rebounds	5
FT %:	2-3	66.7%	4-6:	66.7%	1-2:	50.0%	5-6:	83.3%	12-17:	70.6%						

Officials: Matt Shute, Sean Martin, Tim Tamashiro  
 Technical fouls: American-None. Stanford-None.  
 Attendance: 1268

Score by periods	1st	2nd	3rd	4th	Total
American	10	13	16	10	49
Stanford	17	13	15	26	71

Last FG - AU 4th-01:17, STAN 4th-00:48.  
 Largest lead - AU None, STAN by 22 4th-02:38.  
 AU led for 00:00. STAN led for 38:13. Game was tied for 01:47.  
 In Points: AU 22, STAN 36; Off Paint: AU 17, STAN 17; 2nd Chance: AU 0, STAN 8; Fast Break: AU 0, STAN 8; Bench: AU 2, STAN 14  
 Score tied - 1 time. Lead changed - 0 times.

**Official Basketball Box Score -- Game Totals -- Final Statistics**  
**Stanford vs Hawaii**  
**11/25/18 2:30 PM at Honolulu, O'ahu (Stan Sheriff Center)**

**Stanford 81 • 6-0**

#	Player	Total			3-Ptr			Rebounds			PF	TP	A	TO	Blk	Stl	Min
		FG-FGA	FG-FGA	FT-FTA	FG-FGA	FG-FGA	FT-FTA	Off	Def	Tot							
04	Fingall, Nadia	f	3-7	1-1	0-0	2	4	6	1	7	1	2	0	1	24		
11	Smith, Alanna	f	12-15	3-6	3-3	2	2	4	2	30	3	3	1	0	25		
03	Wilson, Anna	g	0-2	0-2	2-2	0	4	4	1	2	0	0	0	1	15		
21	Carrington, Dijonai	g	4-6	2-2	2-3	1	3	4	1	12	4	2	0	3	19		
23	Williams, Kiana	g	4-9	0-5	1-2	0	4	4	0	9	3	1	0	2	35		
02	Coffee, Shannon	g	1-2	0-0	0-0	0	1	1	0	2	0	0	0	0	5		
10	Jerome, Alyssa	g	0-3	0-1	4-6	2	0	2	1	4	1	0	0	1	11		
14	Brewer, Mikaela	g	0-0	0-0	0-0	0	0	0	0	0	0	0	0	0	1		
15	Dodson, Maya	g	3-4	0-0	1-1	0	1	1	2	7	0	1	2	0	15		
20	Moschkau, Estella	g	0-0	0-0	0-0	0	0	0	0	0	0	0	0	0	6		
22	Romano, Alexa	g	0-0	0-0	0-0	0	0	0	0	0	0	0	0	0	2		
24	Hull, Lacie	g	3-4	2-3	0-0	0	3	3	0	8	6	2	2	3	28		
54	Brown, Jenna	g	0-1	0-1	0-0	0	0	0	2	0	0	0	0	0	14		
Team						1	2	3									
Totals			30-53	8-21	13-17	8	24	32	11	81	18	13	5	13	200		

1st FG %:	5-14	35.7%	2nd:	11-18	61.1%	3rd:	9-13	69.2%	4th:	5-8	62.5%	Game:	30-53	56.6%	Deadball	
3FG %:	0-7	0.0%	3-6:	50.0%	3-5:	60.0%	3-6:	50.0%	5-6:	83.3%	13-17:	76.5%			Rebounds	3,2
FT %:	5-5	100.0%	0-0:	0.0%	0-0:	0.0%	3-6:	50.0%								

**Hawaii 59 • 1-7**

#	Player	Total			3-Ptr			Rebounds			PF	TP	A	TO	Blk	Stl	Min
		FG-FGA	FG-FGA	FT-FTA	FG-FGA	FG-FGA	FT-FTA	Off	Def	Tot							
12	Salanoa, Leah	f	2-4	2-3	0-0	1	1	2	2	6	3	2	0	0	23		
35	Woodfolk, Makenna	f	6-9	3-4	1-1	1	4	5	4	16	0	1	0	1	20		
01	Odumu, Rachel	g	1-3	1-1	0-0	0	0	0	1	3	1	2	0	0	14		
02	Middap, Courtney	g	4-7	3-3	0-0	0	2	2	1	11	3	3	1	0	24		
11	Kanoa, Tia	g	1-3	1-2	0-0	0	2	2	0	3	6	4	0	3	33		
00	Tago, Julissa	g	2-10	1-5	0-0	1	0	1	0	5	0	0	0	0	20		
04	Reier, Savannah	g	0-2	0-1	0-0	0	1	1	3	0	2	1	0	1	14		
05	Joseph, Myrrah	g	1-3	0-0	0-0	1	0	1	1	2	0	2	0	0	10		
14	Rewers, Lauren	g	3-5	0-0	0-0	1	1	2	5	6	1	2	0	1	17		
15	Alexander, Jadynn	g	0-1	0-0	0-0	0	0	0	0	0	0	0	0	0	9		
25	Atweller, Amy	g	2-7	2-3	1-1	0	3	3	2	7	1	2	0	0	16		
Team						1	2	3									
Totals			22-54	13-22	2-2	6	16	22	19	59	17	19	1	6	200		

1st FG %:	3-12	25.0%	2nd:	6-12	50.0%	3rd:	8-13	61.5%	4th:	5-17	29.4%	Game:	22-54	40.7%	Deadball	
3FG %:	2-2	100.0%	2-3:	66.7%	7-9:	77.8%	2-8:	25.0%	13-22:	59.1%					Rebounds	0
FT %:	0-0	0.0%	0-0:	0.0%	1-1:	100.0%	1-1:	100.0%								

Officials: Lajwan Robinson, Matt Shute, Ethan Kahoano  
 Technical fouls: Stanford-None. Hawaii-None.  
 Attendance: 1383  
 Game called at 00:48.2 due to injury to Stanford player.

Score by periods	1st	2nd	3rd	4th	Total
Stanford	15	25	24	17	81
Hawaii	8	14	24	13	59

Last FG - STAN 4th-04:09, UH 4th-02:25.  
 Largest lead - STAN by 25 4th-02:56, UH by 2 1st-04:44.  
 STAN led for 38:57. UH led for 00:24. Game was tied for 00:24.  
 In Points: STAN 44, UH 14; Off Paint: STAN 17, UH 14; 2nd Chance: STAN 6, UH 2; Fast Break: STAN 21, UH 2  
 Score tied - 1 time. Lead changed - 4 times.

**Official Basketball Box Score -- Game Totals -- Final Statistics**  
**Stanford vs Gonzaga**  
**12/2/18 2:00 PM at Spokane, WA (McCarthy Athletic Center)**

**Stanford 73 • 6-1**

#	Player	Total			3-Ptr			Rebounds			PF	TP	A	TO	Blk	Stl	Min
		FG-FGA	FG-FGA	FT-FTA	FG-FGA	FG-FGA	FT-FTA	Off	Def	Tot							
04	Fingall, Nadia	f	2-4	1-2	0-0	1	2	3	2	5	3	1	1	2	25		
11	Smith, Alanna	f	4-9	2-5	3-6	2	5	7	5	13	1	3	2	3	24		
24	Hull, Lacie																

Stanford Women's Basketball • Game 16 • Stanford vs. Washington • Stanford, Calif. • January 18, 2019

**Official Basketball Box Score -- Game Totals -- Final Statistics**  
**Stanford vs Tennessee**  
**12/18/18 6:00 PM at Knoxville, Tenn. (Thompson-Boling Arena)**

**Stanford 95 • 8-1**

#	Player	Total			Rebounds			PF	TP	A	TO	Blk	Stl	Min
		FG-FGA	3-Ptr	FT-FTA	Off	Def	Tot							
04	Fingall, Nadia	f	1-4	0-0	1-2	2	4	6	0	3	1	2	0	18
11	Smith, Alanna	f	5-6	3-4	3-4	1	2	3	5	16	3	2	1	21
24	Hull, Lacie	f	5-8	4-5	0-0	1	2	3	14	1	0	1	0	32
21	Carrington, DiJonai	g	11-15	4-5	7-9	0	13	13	1	33	2	5	0	38
23	Williams, Kiana	g	5-13	3-7	3-4	0	5	5	3	16	7	6	0	38
02	Coffee, Shannon	g	0-2	0-2	0-0	0	2	2	0	0	1	1	0	8
10	Jerome, Alyssa	g	0-1	0-0	0-0	1	1	2	0	0	0	2	0	4
15	Dodson, Maya	g	5-7	0-0	0-0	4	5	9	3	10	2	1	1	32
54	Brown, Jenna	g	1-4	0-1	1-2	0	1	1	0	3	2	0	0	9
Team						0	1	1			1			
Totals			33-60	14-24	15-21	9	36	45	15	95	19	20	3	200

1st - FG %: 8-16 50.0% 2nd: 9-16 56.3% 3rd: 8-14 57.1% 4th: 8-14 57.1% Game: 33-60 55.0% Deadball Rebounds 5.1  
3FG %: 4-6 66.7% 5-9 55.6% 2-4 50.0% 3-5 60.0% 14-24 58.3%  
FT %: 2-2 100.0% 2-3 66.7% 2-4 50.0% 9-12 75.0% 15-21 71.4%

**Tennessee 85 • 8-1**

#	Player	Total			Rebounds			PF	TP	A	TO	Blk	Stl	Min
		FG-FGA	3-Ptr	FT-FTA	Off	Def	Tot							
00	Davis, Rennia	f	5-15	2-5	2-2	1	9	10	2	14	1	1	0	35
15	Green, Cheridene	f	3-6	0-0	0-0	2	1	3	3	6	0	0	0	20
02	Westbrook, Evina	g	10-21	2-5	7-9	1	3	4	3	29	10	4	0	40
10	Jackson, Meme	g	4-14	3-13	6-10	2	2	4	3	17	1	1	0	35
14	Green, Zaay	g	6-16	2-5	0-0	1	1	2	5	14	1	0	0	30
04	Collins, Mimi	g	2-3	0-0	1-2	2	0	2	4	5	0	0	0	15
05	Harris, Kamera	g	0-0	0-0	0-0	0	1	1	0	0	2	0	0	2
11	Kushkituah, Kasiyahna	g	0-0	0-0	0-0	0	0	0	0	0	0	0	0	8
12	Burrell, Rae	g	0-0	0-0	0-0	0	0	0	0	0	0	0	0	1
13	Massengill, Jazmine	g	0-0	0-0	0-0	3	2	5	0	0	1	0	0	12
Team						0	0	0						
Totals			30-75	9-28	16-23	12	19	31	21	85	14	8	0	200

1st - FG %: 6-18 33.3% 2nd: 7-19 36.8% 3rd: 10-20 50.0% 4th: 7-18 38.9% Game: 30-75 40.0% Deadball Rebounds 3  
3FG %: 1-4 25.0% 3-8 37.5% 2-5 40.0% 3-11 27.3% 9-28 32.1%  
FT %: 4-6 66.7% 3-3 100.0% 3-5 60.0% 6-9 66.7% 16-23 69.6%

Officials: Mark Zentz, Felicia Grinter, Cameron Inouye  
Technical fouls: Stanford-None. Tennessee-None.  
Attendance: 8051

Score by periods	1st	2nd	3rd	4th	Total
Stanford	22	25	20	28	95
Tennessee	17	20	25	23	85

Last FG - STAN 4th-01:40, UT 4th-01:27.  
Largest lead - STAN by 15 2nd-01:44, UT by 2 3rd-04:22.  
STAN led for 37:18. UT led for 00:38. Game was tied for 01:39.

	Points	In	Off	2nd	Fast	Bench
	STAN	Paint	T/O	Chance	Break	
STAN	38	9	4	11	13	
UT	42	17	11	11	5	

Score tied - 2 times.  
Lead changed - 2 times.

**Official Basketball Box Score -- Game Totals -- Final Statistics**  
**Stanford vs Buffalo**  
**12/21/18 12:00 PM at Buffalo N.Y. (Alumni Arena)**

**Stanford 62 • 9-1**

#	Player	Total			Rebounds			PF	TP	A	TO	Blk	Stl	Min
		FG-FGA	3-Ptr	FT-FTA	Off	Def	Tot							
04	Fingall, Nadia	f	5-9	0-0	2-4	3	4	7	1	12	1	1	0	29
11	Smith, Alanna	f	12-22	4-9	2-2	3	10	13	2	30	5	5	3	38
24	Hull, Lacie	f	0-1	0-1	0-0	0	5	5	2	0	2	0	0	24
21	Carrington, DiJonai	g	1-7	0-3	2-2	1	9	10	3	4	0	5	1	23
23	Williams, Kiana	g	2-9	1-6	2-4	0	2	2	3	7	7	1	0	40-
02	Coffee, Shannon	g	0-0	0-0	0-0	0	0	0	0	0	0	0	0	0+
10	Jerome, Alyssa	g	0-1	0-0	0-0	0	0	0	0	2	0	1	0	9
14	Brewer, Mikaela	g	0-0	0-0	0-0	0	0	0	0	1	0	0	0	1
15	Dodson, Maya	g	3-8	0-0	3-3	1	0	1	2	9	1	2	1	17
20	Moschkau, Estella	g	0-0	0-0	0-0	0	0	0	0	0	0	0	0	0+
22	Romano, Alexa	g	0-1	0-0	0-0	0	0	0	0	0	0	1	0	1
54	Brown, Jenna	g	0-1	0-0	0-0	0	1	1	2	0	1	1	0	6
Team						4	2	6						
Totals			23-59	5-20	11-15	12	33	45	18	62	18	19	5	200

1st - FG %: 7-15 46.7% 2nd: 4-16 25.0% 3rd: 4-15 26.7% 4th: 8-13 61.5% Game: 23-59 39.0% Deadball Rebounds 2.1  
3FG %: 2-6 33.3% 0-5 0.0% 0-2 0.0% 3-7 42.9% 5-20 25.0%  
FT %: 0-0 0.0% 3-3 100.0% 4-6 66.7% 4-6 66.7% 11-15 73.3%

**Buffalo 55 • 7-3**

#	Player	Total			Rebounds			PF	TP	A	TO	Blk	Stl	Min
		FG-FGA	3-Ptr	FT-FTA	Off	Def	Tot							
00	HEMPHILL, Summer	f	4-9	0-0	2-4	3	5	8	0	10	2	3	0	39
12	WILKINS, Courtney	f	1-8	1-6	0-0	2	1	3	2	3	0	1	0	25
10	HALL, Hanna	g	3-10	3-8	2-2	2	3	5	2	11	2	1	0	34
11	ONWUKA, Theresa	g	2-9	0-3	1-1	5	8	13	4	5	2	3	0	31
24	DILLARD, Cierra	g	8-25	2-10	3-5	2	2	4	4	21	3	5	0	40-
13	JONES, Autumn	g	0-3	0-2	0-0	0	0	0	0	0	0	0	0	6
22	SODADE, Ayoleka	g	0-1	0-0	1-2	0	1	1	0	1	0	0	0	1
32	MORRISON, Brittany	g	1-4	0-0	2-3	1	3	4	3	4	3	1	0	16
Team						3	3	6						
Totals			19-69	6-29	11-17	18	26	44	15	55	12	14	0	200

1st - FG %: 4-16 25.0% 2nd: 6-21 28.6% 3rd: 2-12 16.7% 4th: 7-20 35.0% Game: 19-69 27.5% Deadball Rebounds 4  
3FG %: 0-6 0.0% 1-9 11.1% 1-4 25.0% 4-10 40.0% 6-29 20.7%  
FT %: 1-2 50.0% 0-0 0.0% 6-9 66.7% 4-6 66.7% 11-17 64.7%

Officials: Chris Minor, Robert McDow, Kristyne Esparza  
Technical fouls: Stanford-None. Buffalo-None.  
Attendance: 3412

Score by periods	1st	2nd	3rd	4th	Total
Stanford	16	11	12	23	62
Buffalo	9	13	11	22	55

Last FG - STAN 4th-01:42, BUF 4th-00:03.  
Largest lead - STAN by 12 4th-01:42, BUF None.  
STAN led for 39:49. BUF led for 00:00. Game was tied for 00:11.

Score tied - 0 times.  
Lead changed - 0 times.

**Official Basketball Box Score -- Game Totals -- Final Statistics**  
**CSUN vs Stanford**  
**12/29/18 2:00 PM at Stanford, Calif. (Maples Pavilion)**

**CSUN 43 • 6-8**

#	Player	Total			Rebounds			PF	TP	A	TO	Blk	Stl	Min
		FG-FGA	3-Ptr	FT-FTA	Off	Def	Tot							
11	Juliana Louis	f	2-9	0-2	0-3	5	5	10	2	4	1	3	0	27
52	Eliza Matthews	f	1-3	0-0	1-3	2	1	3	1	3	1	2	0	11
03	Channon Fluker	c	3-13	0-1	0-0	0	2	2	3	6	1	0	3	31
33	Serafina Maulupe	g	1-9	1-7	2-2	1	3	4	1	5	0	1	0	23
02	Meghann Henderson	g	3-8	1-4	0-0	0	3	3	1	7	4	1	1	34
11	Jordyn Jackson	g	1-2	0-0	0-0	0	0	0	2	1	2	0	0	16
02	Destiny Brooks	g	2-3	1-2	0-0	0	0	0	5	0	0	0	0	3
15	Claudia Ramos	g	2-8	2-5	0-0	0	3	3	1	6	1	2	0	18
44	Lauren Shymkewicz	g	1-1	0-0	2-2	0	1	1	0	4	2	0	0	22
55	De'Jonae Calloway	g	0-3	0-0	1-2	0	3	3	0	1	0	1	0	15
Team						4	2	6						
Totals			16-59	5-21	6-12	12	23	35	9	43	11	15	4	200

1st - FG %: 1-12 8.3% 2nd: 3-14 21.4% 3rd: 4-15 26.7% 4th: 8-18 44.4% Game: 16-59 27.1% Deadball Rebounds 3  
3FG %: 1-5 20.0% 0-4 0.0% 2-7 28.6% 5-21 23.8%  
FT %: 1-2 50.0% 2-3 66.7% 1-2 50.0% 6-12 50.0%

**Stanford 69 • 10-1**

#	Player	Total			Rebounds			PF	TP	A	TO	Blk	Stl	Min
		FG-FGA	3-Ptr	FT-FTA	Off	Def	Tot							
04	Fingall, Nadia	f	3-8	0-1	0-0	1	1	2	3	6	0	0	0	10
11	Smith, Alanna	f	6-10	0-2	2-2	1	4	5	3	14	1	0	1	17
24	Hull, Lacie	f	4-7	2-5	0-0	2	2	4	1	10	2	1	0	23
21	Carrington, DiJonai	g	2-6	1-3	0-0	2	10	12	1	5	2	1	0	26
23	Williams, Kiana	g	0-6	0-4	0-0	0	2	2	0	0	1	1	0	21
02	Coffee, Shannon	g	2-3	0-0	0-0	2	1	3	0	4	1	1	0	9
10	Jerome, Alyssa	g	2-4	1-2	0-0	0	2	2	2	5	2	1	0	22
14	Brewer, Mikaela	g	1-3	0-1	0-0	1	1	2	0	2	0	1	0	8
15	Dodson,													

**Official Basketball Box Score -- Game Totals -- Final Statistics**  
**UCLA vs Stanford**  
**1/6/19 1:00 PM at Stanford, Calif. (Maples Pavilion)**

**UCLA 80 • 9-6, 2-1**

#	Player	Total			3-Ptr			Rebounds			PF	TP	A	TO	Blk	Stl	Min
		FG-FGA	FG-FGA	FT-FTA	FG-FGA	FG-FGA	FT-FTA	Off	Def	Tot							
11	Lajahna Drummer	r	3-5	1-1	1-3	2	2	4	3	8	0	0	0	1	27		
21	Michaela Onyenwere	r	4-16	1-5	2-2	6	6	12	2	11	1	3	2	1	38		
04	Lindsey Corsaro	g	4-8	4-6	2-4	0	4	4	1	14	2	3	0	1	33		
22	Kennedy Burke	g	4-10	1-3	2-6	4	4	8	3	11	1	2	0	1	28		
24	Japreece Dean	g	10-17	2-5	0-0	0	0	0	4	22	4	3	0	1	39		
00	Chantel Horvat		2-3	0-0	0-0	0	0	0	2	4	1	0	0	0	10		
02	Ahiana Smith		3-8	1-2	0-0	0	5	2	7	1	2	1	1	18			
33	Lauryn Miller		1-2	1-2	0-0	0	0	0	4	3	0	0	0	0	7		
	Team					4	1	5									
<b>Totals</b>			<b>31-69</b>	<b>11-24</b>	<b>7-15</b>	<b>16</b>	<b>22</b>	<b>38</b>	<b>21</b>	<b>80</b>	<b>10</b>	<b>13</b>	<b>3</b>	<b>6</b>	<b>200</b>		

1st - FG %: 9-16 56.3%    2nd: 9-18 50.0%    3rd: 4-19 21.1%    4th: 9-16 56.3%    Game: 31-69 44.9%    Deadball Rebounds 4  
 3FG %: 4-5 80.0%    3-4 75.0%    1-9 11.1%    3-6 50.0%    11-24 45.8%  
 FT %: 2-2 100.0%    0-0 0.0%    3-6 50.0%    2-7 28.6%    7-15 46.7%

**Stanford 86 • 12-1, 2-0**

#	Player	Total			3-Ptr			Rebounds			PF	TP	A	TO	Blk	Stl	Min
		FG-FGA	FG-FGA	FT-FTA	FG-FGA	FG-FGA	FT-FTA	Off	Def	Tot							
10	Jerome, Alyssa	r	2-2	2-2	0-0	0	3	3	1	6	0	0	0	0	20		
11	Smith, Alanna	r	8-18	3-5	5-6	2	9	11	4	24	3	2	5	2	40		
24	Hull, Lacie	r	2-6	1-4	0-0	0	2	2	0	5	6	0	0	2	38		
21	Carrington, DiJonai	g	11-18	3-6	5-6	4	5	9	3	30	1	6	0	1	39		
23	Williams, Kiana	g	7-14	3-9	4-5	0	2	2	0	21	10	2	0	3	39		
02	Coffee, Shannon		0-0	0-0	0-0	0	0	0	1	0	1	0	0	1	12		
03	Wilson, Anna		0-0	0-0	0-0	0	0	0	0	0	0	1	0	0	1		
12	Hull, Lexie		0-4	0-2	0-0	3	0	3	1	0	0	3	0	0	8		
54	Brown, Jenna		0-1	0-0	0-0	0	0	0	0	0	0	1	0	1	3		
	Team					3	4	7									
<b>Totals</b>			<b>30-63</b>	<b>12-28</b>	<b>14-17</b>	<b>12</b>	<b>25</b>	<b>37</b>	<b>10</b>	<b>86</b>	<b>21</b>	<b>15</b>	<b>5</b>	<b>10</b>	<b>200</b>		

1st - FG %: 7-15 46.7%    2nd: 6-14 42.9%    3rd: 9-16 56.3%    4th: 8-18 44.4%    Game: 30-63 47.6%    Deadball Rebounds 2,1  
 3FG %: 4-9 44.4%    2-6 33.3%    3-7 42.9%    3-6 50.0%    12-28 42.9%  
 FT %: 5-6 83.3%    1-2 50.0%    5-5 100.0%    3-4 75.0%    14-17 82.4%

Officials: Kenneth Nash, Penny Davis, Lisa Jones  
 Technical fouls: UCLA-None. Stanford-None.  
 Attendance: 3231

Score by periods	1st	2nd	3rd	4th	Total
UCLA	24	21	12	23	80
Stanford	23	15	26	22	86

	In	Off	2nd	Fast	Bench
Points	Paint	T/O	Chance	Break	
UCLA	30	18	17	4	14
STAN	30	16	6	11	0

Last FG - UCLA 4th-00:06, STAN 4th-00:24.  
 Largest lead - UCLA by 12 2nd-03:08, STAN by 11 4th-09:15.  
 UCLA led for 18:50. STAN led for 18:43. Game was tied for 02:27.

Score tied - 3 times.  
 Lead changed - 7 times.

**Official Basketball Box Score -- Game Totals -- Final Statistics**  
**Stanford vs Arizona State**  
**1/11/19 7:00 PM at Tempe, Ariz. (Wells Fargo Arena)**

**Stanford 72 • 13-1, 3-0**

#	Player	Total			3-Ptr			Rebounds			PF	TP	A	TO	Blk	Stl	Min
		FG-FGA	FG-FGA	FT-FTA	FG-FGA	FG-FGA	FT-FTA	Off	Def	Tot							
10	Jerome, Alyssa	r	1-3	0-0	0-0	0	1	1	1	2	0	1	0	0	13		
11	Smith, Alanna	r	9-15	1-3	6-6	1	5	6	4	25	2	2	1	1	37		
24	Hull, Lacie	r	3-5	1-2	1-1	0	1	1	1	8	2	0	0	2	30		
21	Carrington, DiJonai	g	6-11	3-5	2-2	3	8	11	2	17	1	5	0	1	36		
23	Williams, Kiana	g	3-8	1-3	3-3	0	4	4	1	10	4	4	0	1	39		
02	Coffee, Shannon		0-1	0-1	0-0	0	1	1	1	0	2	0	1	2	9		
03	Wilson, Anna		3-5	0-1	0-0	0	0	0	1	6	1	2	0	1	18		
12	Hull, Lexie		1-2	0-0	2-2	2	3	5	1	4	0	1	1	0	15		
54	Brown, Jenna		0-0	0-0	0-0	0	0	0	0	0	0	1	0	0	3		
	Team					0	3	3									
<b>Totals</b>			<b>26-50</b>	<b>6-15</b>	<b>14-14</b>	<b>6</b>	<b>26</b>	<b>32</b>	<b>12</b>	<b>72</b>	<b>12</b>	<b>16</b>	<b>3</b>	<b>8</b>	<b>200</b>		

1st - FG %: 6-10 60.0%    2nd: 7-13 53.8%    3rd: 5-15 33.3%    4th: 8-12 66.7%    Game: 26-50 52.0%    Deadball Rebounds 0  
 3FG %: 2-4 50.0%    2-2 100.0%    1-7 14.3%    1-2 50.0%    6-15 40.0%  
 FT %: 4-4 100.0%    0-0 0.0%    6-6 100.0%    4-4 100.0%    14-14 100.0%

**Arizona State 65 • 11-4, 2-2**

#	Player	Total			3-Ptr			Rebounds			PF	TP	A	TO	Blk	Stl	Min
		FG-FGA	FG-FGA	FT-FTA	FG-FGA	FG-FGA	FT-FTA	Off	Def	Tot							
22	Ekmark, Courtney	r	4-13	3-9	0-0	0	1	1	1	11	3	1	0	0	28		
42	Ibis, Kianna	r	3-8	0-1	0-0	5	2	7	3	6	1	1	0	1	30		
33	Johnson-Chapman, Char	c	8-12	0-0	0-0	5	1	6	2	16	2	0	2	3	26		
01	Richardson, Reili	g	2-5	0-1	1-1	0	3	3	0	5	4	1	0	1	26		
11	Ryan, Robbi	g	4-10	1-4	2-2	0	2	2	3	11	1	3	0	1	26		
00	Hanson, Taya		1-7	0-3	0-3	2	3	5	0	2	2	1	1	2	16		
04	Russell, Kiara		3-5	0-0	0-0	1	2	3	2	6	1	2	0	0	14		
21	Elena, Sophia		1-3	0-0	0-0	2	1	3	1	2	1	0	0	0	16		
23	Mbulito, Iris		2-5	0-0	0-1	1	0	1	2	4	0	2	0	1	9		
32	Van Hyfte, Jayde		0-0	0-0	0-0	0	0	0	0	0	0	1	0	0	2		
52	Ruden, Jamie		1-6	0-1	0-0	0	1	1	0	2	0	1	0	0	7		
	Team					6	2	8									
<b>Totals</b>			<b>29-74</b>	<b>4-19</b>	<b>3-7</b>	<b>22</b>	<b>18</b>	<b>40</b>	<b>14</b>	<b>65</b>	<b>15</b>	<b>13</b>	<b>3</b>	<b>9</b>	<b>200</b>		

1st - FG %: 5-20 25.0%    2nd: 5-16 31.3%    3rd: 12-18 66.7%    4th: 7-20 35.0%    Game: 29-74 39.2%    Deadball Rebounds 1  
 3FG %: 0-3 0.0%    1-7 14.3%    1-3 33.3%    2-6 33.3%    4-19 21.1%  
 FT %: 1-3 33.3%    0-1 0.0%    0-1 0.0%    2-2 100.0%    3-7 42.9%

Officials: Michael Price, Michol Murray, Kent Johnson  
 Technical fouls: Stanford-None. Arizona State-None.  
 Attendance: 2728

Score by periods	1st	2nd	3rd	4th	Total
Stanford	18	16	17	21	72
Arizona State	11	11	25	18	65

	In	Off	2nd	Fast	Bench
Points	Paint	T/O	Chance	Break	
STAN	32	10	8	2	10
ASU	28	10	20	3	16

Last FG - STAN 4th-00:38, ASU 4th-01:12.  
 Largest lead - STAN by 12 2nd-03:44, ASU by 2 1st-06:04.  
 STAN led for 35:52. ASU led for 00:11. Game was tied for 03:54.

Score tied - 3 times.  
 Lead changed - 2 times.

**Official Basketball Box Score -- Game Totals -- Final Statistics**  
**Stanford vs Arizona**  
**1/13/19 12:00 PM at Tucson, Ariz. (McKale Center)**

**Stanford 78 • 14-1, 4-0**

#	Player	Total			3-Ptr			Rebounds			PF	TP	A	TO	Blk	Stl	Min
		FG-FGA	FG-FGA	FT-FTA	FG-FGA	FG-FGA	FT-FTA	Off	Def	Tot							
10	Jerome, Alyssa	r	1-5	0-3	0-0	0	6	6	3	2	1	3	1	0	28		
11	Smith, Alanna	r	8-16	4-6	0-0	5	9	14	2	20	2	3	7	0	27		
24	Hull, Lacie	r	0-2	0-2	2-2	0	1	1	2	2	3	1	0	1	22		
21	Carrington, DiJonai	g	6-16	3-8	4-4	0	8	8	0	19	1	2	0	0	30		
23	Williams, Kiana	g	5-7	3-3	0-0	0	1	1	0	13	7	0	0	0	25		
02	Coffee, Shannon		1-4	0-3	0-0	2	1	3	0	2	1	0	0	1	13		
03	Wilson, Anna		1-3	0-2	0-0	0	2	2	0	2	0	0	0	1	11		
12	Hull, Lexie		3-4	2-2	0-0	2	3	5	4	8	0	1	0	0	14		
14	Brewer, Mikaela		0-1	0-0	1-2	1	0	1	1	1	0	0	0	1	6		
20	Moschkau, Estella		0-0	0-0	0-0	0	2	2	2	0	1	0	0	0	4		
54	Brown, Jenna		3-5	1-2	2-2	0	1	1	1	9	0	4	0	0	20		
	Team					1	1	2									
<b>Totals</b>			<b>28-63</b>	<b>13-31</b>	<b>9-10</b>	<b>11</b>	<b>35</b>	<b>46</b>	<b>15</b>	<b>78</b>	<b>16</b>	<b>14</b>	<b>8</b>	<b>4</b>	<b>200</b>		

1st - FG %: 6-19 31.6%    2nd: 9-12 75.0%    3rd: 7-16 43.8%    4th: 6-16 37.5%    Game: 28-63 44.4%    Deadball Rebounds 2  
 3FG %: 3-9 33.3%    5-6 83.3%    2-8 25.0%    3-8 37.5%    13-31 41.9%  
 FT %: 6-6 100.0%    0-0 0.0%    2-2 100.0%    1-2

**TV/RADIO ROSTER**



**#2**  
**SHANNON COFFEE**  
 C • 6-5 • SR  
 DAYTON, OHIO  
 CENTERVILLE



**#3**  
**ANNA WILSON**  
 G • 5-9 • JR  
 SEATTLE, WASH.  
 BELLEVUE



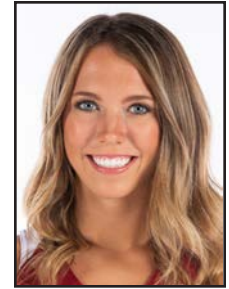
**#4**  
**NADIA FINGALL**  
 F • 6-3 • JR  
 NAVARRE, FLA.  
 CHOCTAWHATCHEE



**#10**  
**ALYSSA JEROME**  
 F • 6-3 • SO  
 TORONTO, CANADA  
 HARBORD COLLEGIATE



**#11**  
**ALANNA SMITH**  
 F • 6-4 • SR  
 MELBOURNE, AUSTRALIA  
 WESLEY COLLEGE



**#12**  
**LEXIE HULL**  
 F • 6-0 • FR  
 SPOKANE, WASH.  
 CENTRAL VALLEY



**#13**  
**MARTA SNIEZEK**  
 G • 5-8 • SR  
 MCLEAN, VA.  
 NATIONAL CATHEDRAL [D.C.]



**#14**  
**MIKAELA BREWER**  
 G • 5-10 • JR  
 BARRIE, ONTARIO, CANADA  
 INNISDALE SECONDARY



**#15**  
**MAYA DODSON**  
 F • 6-3 • SO  
 ALPHARETTA, GA.  
 ST. FRANCIS



**#20**  
**ESTELLA MOSCHKAU**  
 F • 6-1 • SO  
 MADISON, WIS.  
 EDGEWOOD



**#21**  
**DIJONAI CARRINGTON**  
 G • 5-11 • JR  
 SAN DIEGO, CALIF.  
 HORIZON CHRISTIAN



**#23**  
**KIANA WILLIAMS**  
 G • 5-8 • SO  
 SAN ANTONIO, TEXAS  
 KAREN WAGNER



**#24**  
**LACIE HULL**  
 F • 6-1 • FR  
 SPOKANE, WASH.  
 CENTRAL VALLEY



**#54**  
**JENNA BROWN**  
 G • 5-10 • FR  
 ATLANTA, GA.  
 THE LOVETT SCHOOL



**TARA VANDERVEER**  
 HEAD COACH  
 33RD YEAR



**KATE PAYE**  
 ASSOCIATE HEAD COACH  
 12TH YEAR



**TEMPIE BROWN**  
 ASSISTANT COACH  
 SIXTH YEAR



**LINDY LA ROCQUE**  
 ASSISTANT COACH  
 SECOND YEAR