



GOSTANFORD.COM • #GOSTANFORD



2018-19 SCHEDULE AND RESULTS

NOVEMBER

7	UC Davis	W, 71-43
11	Idaho	W, 115-71
15	San Francisco	W, 96-62
18	Ohio State (P12N)	canceled
23	vs. FGCU (1)	W, 88-65
24	vs. American (1)	W, 71-49
25	at Hawaii (1)	W, 81-59

DECEMBER

2	at Gonzaga	L, 73-79
15	#3/4 Baylor (P12N)	W, 68-63
18	at #9/8 Tennessee (SECN)	W, 95-85
21	at Buffalo (ESPN+)	W, 62-55
29	CSUN	W, 69-43

JANUARY

4	USC * (P12N)	W, 72-64
6	UCLA * (P12N)	W, 86-80
11	at #19/19 Arizona State * (P12N)	W, 72-65
13	at Arizona * (P12N)	W, 78-48
18	Washington * (P12N)	W, 91-54
20	Washington State * (P12N)	W, 85-64
25	at Colorado * (P12N)	W, 80-69
27	at #21/24 Utah *	L, 68-75
31	at California * (P12N)	8 p.m.

FEBRUARY

2	California * (P12N)	4 p.m.
8	Oregon State * (P12N)	6 p.m.
10	Oregon * (ESPN2)	1 p.m.
15	at UCLA * (P12N)	6 p.m.
17	at USC * (P12N)	noon
22	Arizona *	7 p.m.
24	Arizona State * (P12N)	1 p.m.

MARCH

1	at Washington State * (P12N)	7 p.m.
3	at Washington * (P12N)	2 p.m.
7-10	Pac-12 Tournament (2)	TBD

(1) - Rainbow Wahine Showdown; Honolulu, Hawaii

(2) - Pac-12 Tournament; Las Vegas, Nev.

* - Pac-12 game;

All times local and subject to change;

Home games in Bold;

[#/#] - Indicates national ranking (AP/USA Today)

(P12N) - Game televised on Pac-12 Networks

(ESPN2/SECN) - Game televised on ESPN family of networks

Athletic Communications

Director John Cantalupi
 Cell Phone (650) 924-8304
 E-Mail johncan@stanford.edu

THE GAME: Off to its best start in five seasons, No. 8 Stanford (17-2, 7-1) heads to Berkeley to play at Cal (13-6, 4-4) on Thursday, Jan. 31 at 8 p.m. Kate Scott and Mary Murphy have the call on Pac-12 Networks and Kevin Danna will handle the radio broadcast on GoStanford.com.

THE RUNDOWN: At 17-2, Stanford is off to its best start since 2013-14 (22-1) ... Tara VanDerveer collected her 900th win at Stanford on Jan. 20 against Washington State ... Alanna Smith is the only player in the country shooting better than 48 percent both from the floor and from deep ... DiJonai Carrington's 33-point, 13-rebound, four 3-pointer effort against Tennessee was the second for a player in the past 20 years against a ranked opponent ... Stanford is one of three schools in the nation with a pair of top-10 wins ... The Cardinal is 18th in the country in scoring offense (80.1) and 19th in field goal percentage (.461) ... Stanford is 12th in the country in 3-point makes per game (9.7) and 20th in 3-point percentage (.374) ... Alanna Smith is the only player in the country averaging 21.0 points, 8.0 rebounds, 2.0 assists and 2.0 blocks per game ... DiJonai Carrington is averaging 15.5 points and 9.4 rebounds in the last 11 games, including four double-doubles ... Alanna Smith is averaging 23.8 points, 10.3 rebounds and 3.5 blocks in the last 10, including six double-doubles ... Haley Jones, the nation's consensus No. 1 recruit, announced her commitment on Nov. 28, the first top player to sign with Stanford since Chiney Ogwumike in Nov. 2009 ... Stanford, which shot 67.0 percent from the line in its first 13 games, has made 83.5 percent of its free throws in the last six.

STANFORD AT A GLANCE

Game 20

Overall Record	17-2
Pac-12 Record	7-1
Home Record	9-0
Road Record	6-2
Neutral Record	2-0

HEAD COACH TARA VANDERVEER

Stanford Record (33rd year)	901-193
Career Record (40th year)	1,053-244
All-Time vs. California	62-11

SERIES HISTORY

All-Time vs. California	69-20
At Stanford	32-8
At California	30-12
Streak	Cal, 1
Last Stanford Win	2/15/18 (74-69 @ STAN)
Last California Win	2/17/18 (78-66 @ CAL)

VS. CAL: Stanford is 69-20 all-time against Cal, 30-12 against the Bears in Berkeley and has won 19 of the last 22 in the series. Cal won in Haas Pavilion last season, 78-66, to end a six-game overall Stanford winning streak and a run of eight straight victories in Berkeley. Kiana Williams averaged 20 points in the two games last season and Alanna Smith 14 points and 8.5 rebounds. The two schools played the first intercollegiate women's basketball game on April 4, 1896 at a San Francisco armory on Page Street the day before Easter. Stanford won 2-1.

STANFORD PROBABLE STARTERS

No.	Player	Pos.	Ht.	Yr.	PPG	RPG	APG
10	Alyssa Jerome	F	6-3	So.	3.5	3.2	0.6
11	Alanna Smith	F	6-4	Sr.	21.2	8.3	2.6 (BPG)
21	DiJonai Carrington	G	5-11	Jr.	13.1	7.5	1.7
23	Kiana Williams	G	5-8	So.	14.7	2.3	5.0
24	Lacie Hull	G	6-1	Fr.	5.3	2.5	2.1

STANFORD OFF THE BENCH

No.	Player	Pos.	Ht.	Yr.	PPG	RPG	APG
2	Shannon Coffee	C	6-5	Sr.	1.5	1.5	0.8
3	Anna Wilson	G	5-9	Jr.	3.3	1.5	0.9
4	Nadia Fingall (OUT FOR SEASON)	F	6-3	Jr.	8.0	4.9	1.7
12	Lexie Hull	G	6-0	Fr.	6.5	5.4	0.7
13	Marta Sniezek	G	5-8	Sr.	--	--	--
14	Mikaela Brewer	G	5-10	Jr.	1.5	0.6	0.1
15	Maya Dodson	F	6-3	So.	9.0	4.2	1.7 (BPG)
20	Estella Moschkau	G	6-1	So.	1.2	0.5	0.3
54	Jenna Brown	G	5-10	Fr.	2.3	1.3	1.1

QUICK FACTS**The University**

Location Stanford, Calif.
 Founded..... 1891
 Enrollment..... 16,424 (7,056 undergraduate)
 Nickname..... Cardinal
 Colors..... Cardinal and White
 Affiliation NCAA Division I
 Conference Pac-12
 President Marc Tessier-Lavigne
 Provost..... Persis Drell
 Director of Athletics..... Bernard Muir
 Faculty Representative Jeff Koseff
 Senior Women's Administrator..... Beth Goode
 Athletic Department Phone 650-723-4591
 Ticket Office Phone 800-STANFORD
 Home Facility..... Maples Pavilion
 Capacity 7,233
 Web Site www.gostanford.com

Stanford Women's Basketball History

First Year 1974-75 (45 seasons)
 All-Time Record 1,077-331 (.765)
 All-Time Pac-12 (since 1986-87) 507-76 (.870)
 NCAA Championships 2 (1990, 1992)
 NCAA Tournament Appearances 32 (86-30)
 Last NCAA Tournament Appearance 2018
 NCAA Final Four Appearances 13
 Last NCAA Final Four Appearance 2017

Staff Information

Head Coach Tara VanDerveer (33rd season)
 Alma Mater Indiana, 1975
 Stanford Record 901-193/33 seasons
 Career Record..... 1,053-244/40 seasons
 Associate Head Coach..... Kate Paye (12th season)
 Alma Mater Stanford, 1995
 Assistant Coach Tempie Brown (sixth season)
 Alma Mater Michigan, 1990
 Assistant Coach Lindy La Rocque (second season)
 Alma Mater Stanford, 2012
 Operations..... Eileen Roche (Ohio Wesleyan '81)
 Administrator..... Amy Tucker (Ohio State, '82)
 Video Coordinator..... Hana Potter (Washington St. '14)
 Athletic Trainer..... Katelin Knox (Santa Clara '09)
 Sports Performance Brittany Keil (Holy Cross '07)
 Basketball Office Phone..... (650) 723-0284

Team Information

Letterwinners Returning/Lost 12/2
 Starters Returning/Lost 3/2
 Newcomers..... 3
 2017-18 Record..... 24-11
 Home 14-2
 Away 6-5
 Neutral..... 4-4
 2017-18 Conference Record 14-3
 Finish 2nd

NEWS AND NOTES »

- At 17-2, Stanford is off to its best 19-game start since it began the 2013-14 season 22-1.
- The Cardinal had its 11-game winning streak snapped on Sunday at Utah. It was tied for the third-longest active streak in the nation.
- Stanford entered conference play with a 10-1 record (.909), the first time in five years it suffered just one nonconference defeat.
- The Cardinal's Nov. 18 home contest against Ohio State was canceled due to smoke from the devastating wildfires in Butte County that had compromised the air quality throughout the Bay Area.
- Stanford is currently No. 8 in the AP Top 25 and No. 3 in the NCAA RPI.
- Since 2007-08, the Cardinal owns a conference home record of 97-6 and a Pac-12 road record of 87-15.
- Stanford's 184 conference wins since 2007-08 are the most in the nation (Green Bay/UConn - 183).
- Stanford's all-time Pac-12 record is 507-76 and 150 wins clear of the next closest team (UW - 337).
- The Cardinal was 14-of-14 at the line in Jan. 11's 72-65 win over No. 19 Arizona State, a program record for makes without a miss from the stripe. Stanford had previously gone 13-for-13 against Seattle on Feb. 29, 2012 and Cal on Feb. 11, 2005.
- Stanford is a combined 66-79 (.835) on free throws in the last six games. Prior to that, the Cardinal was shooting 67.0 percent from the line (150-of-224).
- Stanford leads the conference and is 15th in the country in blocks per game (5.37).
- Tara VanDerveer won her 900th game as head coach at Stanford on Jan. 20 against Washington State to become the fifth DI coach, women's or men's, with that many at a single school (Pat Summitt, Geno Auriemma, Mike Krzyzewski, Jim Boeheim).

HOME COOKIN' »

- Stanford is in the midst of an 20-game winning streak in Maples Pavilion, the seventh-longest active stretch in the country and the program's longest since it went 28 straight from Jan. 18, 2013 until an 87-81 overtime loss to No. 10 Texas on Nov. 20, 2014.
- Last season, the Cardinal was the only Pac-12 team undefeated at home in conference (9-0).
- Stanford has won 16 consecutive Pac-12 home games.
- Stanford's last home loss was to No. 7 Tennessee on Dec. 21, 2017 (83-71) and its last conference loss at home was to No. 15 UCLA on Feb. 6, 2017 (85-76).
- The Cardinal has won 23 in a row at home over unranked Pac-12 teams. Its last such loss was Feb. 22, 2015, when it was beaten by Cal, 63-53.

INJURY BUG »

- A number of players have missed significant stretches of time for Stanford.
- Junior Nadia Fingall, who had started each of the Cardinal's first 12 games and averaged 8.0 points and 4.9 rebounds, will miss the remainder of the season after tearing the ACL in her left knee in a game against USC on Jan. 4.
- Senior Marta Sniezek has yet to play this year after undergoing offseason ulnar collateral ligament (UCL) surgery on her right hand/thumb. She started 32 games last season.
- Freshman Lexie Hull returned in Stanford's Jan. 6 win over UCLA after missing the previous nine games with a left foot injury. She had started the first three games of the year.
- Sophomore Maya Dodson, arguably one of the conference's most improved players, has missed the last eight games with a left foot injury.

2018-19 STANFORD ROSTER

No.	Player	Pos.	Ht.	Yr.	Major	Hometown (High School)
2	Shannon Coffee	C	6-5	Sr.	Human Biology	Dayton, Ohio (Centerville)
3	Anna Wilson	G	5-9	Jr.	Art Practice	Seattle, Wash. (Bellevue)
4	Nadia Fingall	F	6-3	Jr.	Human Biology	Navarre, Fla. (Choctawhatchee)
10	Alyssa Jerome	F	6-3	So.	Undeclared	Toronto, Ontario, Canada (Harbord Collegiate)
11	Alanna Smith	F	6-4	Sr.	Psychology	Melbourne, Victoria, Australia (Wesley College)
12	Lexie Hull	F	6-0	Fr.	Undeclared	Spokane, Wash. (Central Valley)
13	Marta Sniezek	G	5-8	Sr.	American Studies	McLean, Va. (National Cathedral [D.C.])
14	Mikaela Brewer	G	5-10	Jr.	Human Biology	Barrie, Ontario, Canada (Innisdale Secondary)
15	Maya Dodson	F	6-3	So.	Undeclared	Alpharetta, Ga. (St. Francis)
20	Estella Moschkau	F	6-1	So.	Undeclared	Madison, Wis. (Edgewood)
21	DiJonai Carrington	G	5-11	Jr.	Psychology • African & African American Studies	San Diego, Calif. (Horizon Christian)
23	Kiana Williams	G	5-8	So.	Undeclared	San Antonio, Texas (Karen Wagner)
24	Lacie Hull	F	6-1	Fr.	Undeclared	Spokane, Wash. (Central Valley)
54	Jenna Brown	G	5-10	Fr.	Undeclared	Atlanta, Ga. (The Lovett School)

TEMPIE Brown (TEMP-ee)
 DIJONAI Carrington (dijon-NAY)
 Nadia FINGALL (FING-gull)

Estella MOSCHKAU (MOSS-cow)
 ALANNA Smith (uh-LAN-uh)
 Marta SНИЕZEK (SNEEZE-ick)
 TARA VANDERVEER (TAR-uh van-DER-veer)

STANFORD'S RECORD WHEN

Category	H	R	N	O
Scoring First	5-0	6-1	1-0	12-1
Opponent Scores First	4-0	0-1	1-0	5-1
Lead at Half	7-0	5-0	2-0	14-0
Trail at Half	2-0	1-2	0-0	3-2
Tied at Half	0-0	0-0	0-0	0-0
Overtime	0-0	0-0	0-0	0-0
vs. Top 25	1-0	2-1	0-0	3-1
Decided by 1-4 Points	0-0	0-0	0-0	0-0
Decided by 5-9 Points	3-0	2-2	0-0	5-2
Decided by 10+ Points	6-0	4-0	2-0	12-0
Scoring 100+	1-0	0-0	0-0	1-0
Scoring 90-99	2-0	1-0	0-0	3-0
Scoring 80-89	2-0	2-0	1-0	5-0
Scoring 70-79	2-0	2-1	1-0	5-1
Scoring 60-69	2-0	1-1	0-0	3-1
Scoring 50-59	0-0	0-0	0-0	0-0
Scoring 40-49	0-0	0-0	0-0	0-0
Opp. Scoring 90-99	0-0	0-0	0-0	0-0
Opp. Scoring 80-89	1-0	1-0	0-0	2-0
Opp. Scoring 70-79	1-0	0-2	0-0	1-2
Opp. Scoring 60-69	4-0	2-0	1-0	7-0
Opp. Scoring 50-59	1-0	2-0	0-0	3-0
Opp. 49 or Fewer	2-0	1-0	1-0	4-0
50%-plus FG Pct.	3-0	3-0	1-0	7-0
40-49.9% FG Pct.	5-0	2-1	1-0	8-1
39.9%-minus FG Pct.	1-0	1-1	0-0	2-1
Opp. 50%-plus FG Pct.	0-0	0-1	0-0	0-1
Opp. 40-49.9% FG Pct.	2-0	2-1	0-0	4-1
Opp. 39.9%-minus	7-0	4-0	2-0	13-0
Better FG% than Opp.	9-0	6-0	2-0	17-0
FG% is Equal	0-0	0-0	0-0	0-0
Opp. Better FG%	0-0	0-2	0-0	0-2
80%-plus FT Pct.	3-0	3-0	0-0	6-0
70-79% FT Pct.	2-0	3-0	1-0	6-0
69%-minus FT Pct.	4-0	0-2	1-0	5-2
Better FT% than Opp.	7-0	4-0	0-0	11-0
FT% is Equal	0-0	0-0	0-0	0-0
Opp. Better FT%	2-0	2-2	2-0	6-2
Outrebounding Opp.	5-0	4-0	2-0	11-0
Rebounds are Equal	0-0	0-1	0-0	0-1
Outrebounded by Opp.	4-0	2-1	0-0	6-1
Fewer TO than Opp.	6-0	2-1	1-0	9-1
Turnovers are Equal	0-0	0-1	0-0	0-1
More TO than Opp.	3-0	4-0	1-0	8-0
6 in Double Figures	1-0	0-0	0-0	1-0
5 in Double Figures	0-0	1-0	0-0	1-0
4 in Double Figures	1-0	0-1	0-0	1-1
3 in Double Figures	7-0	3-1	2-0	12-1
2 in Double Figures	0-0	2-0	0-0	2-0
1 in Double Figures	0-0	0-0	0-0	0-0
Bench Scores More	2-0	5-0	1-0	8-0
Opp. Bench Scrs. More	4-0	1-1	1-0	6-1
Wearing Black	0-0	3-1	1-0	4-1
Wearing White	8-0	0-0	1-0	9-0
Wearing Cardinal	0-0	3-1	0-0	3-1

RECORDS SET ON ROCKY TOP »

- On the 30th anniversary of the first meeting in their storied rivalry, Stanford went on the road and beat then-No. 9 Tennessee in Knoxville, 95-85, on Dec. 18.
- In the first top-10 matchup between the schools since 2013, the Cardinal collected its third win against the Lady Vols in Thompson-Boling Arena. Its previous road victories in Knoxville came on Dec. 22, 2012 (73-60) and Dec. 15, 1996 (82-65).
- Stanford shot 14-of-24 (.583) from 3-point range, an opponent record for Thompson-Boling Arena and a record-tying number of makes from deep against the Lady Vols all-time.
- The Cardinal's 95 points were the most against Tennessee in Knoxville in 13 seasons and just two shy of the opponent record in Thompson-Boling Arena. Texas beat the Lady Vols 97-78 on Dec. 9, 1987.
- Stanford shot 55 percent overall (33-of-60) to score its 95 points, a program record for scoring on the road against a top-10 team.
- DiJonai Carrington led five Cardinal in double figures with a career-high 33 points and 13-rebounds for her third career double-double. Carrington was 11-of-15 (.733) from the floor and 4-of-5 (.800) from deep and became just the second player in the last 20 years to have 33 points, 13 rebounds and four made 3-pointers against a ranked opponent. Missouri's Evan Unrau had 40/15/4 against No. 8 Kansas State on Feb. 22, 2014, a game that went into double-overtime.

RESUME BUILDERS »

- Coupled with a Dec. 15 68-63 home victory over then-No. 3 Baylor, Stanford beat a pair of top-10 teams in the span of four days, something it last did eight years ago when it beat No. 4 Xavier, 89-52, on Dec. 28, 2010 and No. 1 UConn, 71-59, on Dec. 30, 2010 to end the Huskies' then-record 90-game winning streak. Both of those victories were at home.
- Stanford, Notre Dame and Michigan State are the only schools in the nation with a pair of top-10 wins.
- The win against the Lady Bears was the Cardinal's first in the regular season against a top-five team since it ended No. 1 UConn's 47-game winning streak in overtime, 88-86, on Nov. 17, 2014.
- Stanford is now 9-1 in its last 10 home game against top-five opponents.
- The 6-foot-5 Shannon Coffee set season highs with nine points and 19 minutes and made three of her four 3-point attempts against Baylor. The senior has made 12 from deep in her career and seven have come against Baylor. She was 4-of-8 last season in an 81-57 loss in Waco.
- Coupled with Alanna Smith's 5-of-9 effort from behind the arc, the Cardinal's two tallest players were a combined 8-of-13 (.615) from distance.
- Baylor, which entered the game leading the nation in field goal percentage (.557), shot just 34.9 percent (22-of-63) against the Cardinal, its lowest since losing 88-69 to Notre Dame in the Elite Eight on March 31, 2014 (.338).
- Kalani Brown (16.4 ppg) and Lauren Cox (12.3 ppg), who came in averaging nearly 30 combined points per game, together went for just seven points on just 3-of-11 shooting (.273). Brown came into the day leading the NCAA's active players in field goal percentage (.648) made only two of her seven attempts from the floor, the third-lowest percentage of her career when attempting at least five shots.

MARKED OFFENSIVE IMPROVEMENT »

- The Cardinal is 18th in the country in scoring offense (80.1) and 20th in scoring margin (+17.3).
- Stanford hasn't averaged more than 75.0 points per game since 2013-14 and has averaged 68.7 (2017-18), 68.8 (2015-16) and 69.3 (2014-15) in three of the last four years. Those are three of the five lowest scoring offenses for a Tara VanDerveer team at Stanford, behind 1985-86 (66.6) and 1986-87 (67.8).
- Stanford is 19th nationally in field goal percentage (.461) and 18th in assist-to-turnover ratio (1.26).
- Those categories are just a couple of many where the Cardinal has seen a marked improvement year-over-year. Last season, Stanford was 87th in field goal percentage (.424) and 126th in assist-to-turnover ratio (0.93).

SHARP SHOOTERS »

- Stanford is 12th in the country, averaging 9.7 3-point makes per game and 20th in 3-point percentage, making 37.4 percent.
- Stanford's 16 3-pointers on Nov. 11 against Idaho tied a program single-game record also achieved at UCLA on Feb. 24, 2002 and at Washington on Feb. 24, 2001.
- Entering the season, Stanford had made 14 3-pointers in a game 16 times in 1,389 games (1.2 percent). This year's Cardinal has already done it three times in 19 games against Idaho (16), San Francisco (15) and Tennessee (14).
- The Cardinal made 31.9 percent of its attempts from behind the arc last season, the second-worst percentage in program history. Stanford also was a program-low 42.4 percent from the floor overall in 2017-18.
- Stanford won that game against Idaho 115-71, its fifth-highest point total ever and most since tying a school record with 122 against Cal State Fullerton on Dec. 10, 1994.

VANDERVEER'S HEAD COACHING CAREER

Year	School	Overall	Post.
1978-79	Idaho	17-8	
1979-80	Idaho	25-6	AIAW Championships
1980-81	Ohio State	17-15	---
1981-82	Ohio State	20-7	NCAA First Round
1982-83	Ohio State	23-5	---
1983-84	Ohio State	22-7	NCAA First Round
1984-85	Ohio State	28-3	NCAA Elite 8
1985-86	Stanford	13-15	---
1986-87	Stanford	14-14	---
1987-88	Stanford	27-5	NCAA Sweet 16
1988-89	Stanford	28-3	NCAA Elite 8
1989-90	Stanford	32-1	NCAA Champions
1990-91	Stanford	26-6	NCAA Final Four
1991-92	Stanford	30-3	NCAA Champions
1992-93	Stanford	26-6	NCAA Sweet 16
1993-94	Stanford	25-6	NCAA Elite 8
1994-95	Stanford	30-3	NCAA Final Four
1995-96	Stanford	---	USA Head Coach
1996-97	Stanford	34-2	NCAA Final Four
1997-98	Stanford	21-6	NCAA First Round
1998-99	Stanford	18-12	NCAA First Round
1999-00	Stanford	21-9	NCAA Second Round
2000-01	Stanford	19-11	NCAA Second Round
2001-02	Stanford	32-3	NCAA Sweet 16
2002-03	Stanford	27-5	NCAA Second Round
2003-04	Stanford	27-7	NCAA Elite 8
2004-05	Stanford	32-3	NCAA Elite 8
2005-06	Stanford	26-8	NCAA Elite 8
2006-07	Stanford	29-5	NCAA Second Round
2007-08	Stanford	35-4	NCAA Runner-Up
2008-09	Stanford	33-5	NCAA Final Four
2009-10	Stanford	36-2	NCAA Runner-Up
2010-11	Stanford	33-3	NCAA Final Four
2011-12	Stanford	35-2	NCAA Final Four
2012-13	Stanford	33-3	NCAA Sweet 16
2013-14	Stanford	33-4	NCAA Final Four
2014-15	Stanford	26-10	NCAA Sweet 16
2015-16	Stanford	27-8	NCAA Elite 8
2016-17	Stanford	32-6	NCAA Final Four
2017-18	Stanford	24-11	NCAA Sweet 16
2018-19	Stanford	17-2	

1,053-244**COACHING HIGHLIGHTS**

- The second-winningest coach in women's college basketball history and was the second to reach 1,000 career wins (Feb. 3, 2017 vs. USC).
- Possesses the sixth-highest career winning percentage (.812) among Division I women's basketball coaches all-time.

HONORS AND AWARDS

- Naismith Memorial Basketball Hall of Fame ('11)
- Women's Basketball Hall of Fame ('02)
- Two NCAA Championships (1990, 1992)
- Head of the 1996 U.S. Olympic Team (Gold)
- 60-0 record with USA Olympic Team in 1995-96
- 88-8 record (.917) as USA Basketball Head Coach
- 12 NCAA Final Fours
- 22 regular-season Pac-12 titles
- Four-time National Coach of the Year
- 15-time Pac-12 Coach of the Year
- Two-time Big Ten Coach of the Year

FROM DOWN UNDER »

- Alanna Smith is on every major watch list, including the Naismith Trophy, Wade Trophy, John R. Wooden Award, Katrina McClain Award and Senior CLASS Award.
- A two-time Pac-12 Player of the Week this season (Dec. 17 and Jan. 14) and the espnW and USBWA National Player of the Week from Dec. 17, Smith is shooting 55.0 percent from the field (148-of-269), 48.1 percent from behind the arc (52-of-108) and averaging a team-high 21.2 points per game to go with 8.3 rebounds.
- She is the only player in the nation shooting better than 48 percent both overall and from deep.
- Only five players have done that for an entire season over the past 20 years: Shatori Walker-Kimbrough (Maryland; 2015-16), Kaleena Mosqueda-Lewis (Connecticut; 2012-13 and 2014-15), Tricia Liston (Duke; 2013-14), Emily London (Samford; 2010-11) and Nicole Bauman (Wisconsin; 2014-15).
- Elena Delle Donne is the only player 6'4" and taller over the past two decades to shoot better than 40 percent from 3-point range when she made 41.3 percent as a freshman at Delaware in 2009-10 (NCAA minimum of two made 3-pointers per game).
- Smith, who has double-doubles in six of her last 10 games, is the only player in the country averaging 21.0 points, 8.0 rebounds, 2.0 assists and 2.0 blocks per game this season.
- Smith is averaging 23.8 points, 10.3 rebounds and 3.5 blocks in the last 10 games.
- Smith is third in the conference and 32nd in the country in field goal percentage, first in the Pac-12 and fifth in the country in 3-point percentage, third in the league and 12th nationally in scoring and first in the conference and 14th in the country in blocks per game.
- She is 22nd in school history in scoring (1,406) and fifth in blocks (196).
- Smith is within range of joining an elite company of players that have put together careers of 1,600 points, 150 made 3-pointers and 200 blocks. Since 1999-00, the only three to do that are Elena Delle Donne (3,039 points; 206 3-pointers; 273 blocks), Maya Moore (3,036 points; 311 3-pointers; 204 blocks) and Breanna Stewart (2,676 points; 152 3-pointers; 414 blocks).
- At her current pace, Smith would reach those numbers by the end of the regular season (10 games).
- The senior had 30 points, 13 rebounds five assists and three blocks in a 62-55 win at Buffalo on Dec. 21 to become just the fourth player since 2000 to put together a line of 30/13/5/3 in a true road game.
- Jennie Simms had 41/13/6/3 for Old Dominion against Florida Atlantic on Feb. 4, 2017, Jerica Coley had 30/14/5/4 for FIU against South Florida on March 17, 2012 and Jessica Davenport had 34/16/6/3 for Ohio State against Iowa on Jan. 12, 2006.

WATCH WILLIAMS »

- Kiana Williams is also on watch lists for the Naismith Trophy and Ann Meyers Drysdale Award.
- The sophomore is second on the team in scoring (14.7 points per game) and four of her five 20-point games this season have come in conference.
- Williams had her first career double-double with 21 points and 10 assists in the Jan. 6 win against UCLA. It was Stanford's first 20-point, 10-assist double-double since Jeanette Pohlen had 21 and 12 in a win over USC on Jan. 22, 2011.
- It was also the Cardinal's first individual 10-assist effort since Marta Sniezek had that many in the 2016-17 season opener against Cal Poly on Nov. 11, 2016.
- Williams is also averaging 5.0 assists per game, which is seventh in the conference. No Stanford player has averaged 4.5 assists in a season since Jeanette Pohlen in 2010-11 (4.8) and no one has averaged 5.0 since Nicole Powell in 2001-02 (6.3).

VANDERVEER'S CAREER MILESTONES

Win #1	Dec. 1, 1978 Idaho vs. Northern Montana, 70-68	Win #1 at Stanford	Nov. 22, 1985 vs. Hawaii, 68-65
Win #100	Feb. 27, 1983 Ohio State vs. Michigan, 74-60	Win #100 at Stanford	Jan. 27, 1990 vs. Arizona State, 90-63
Win #200	Feb. 12, 1988 Stanford vs. Washington, 70-66	Win #200 at Stanford	Dec. 18, 1993 vs. SW Missouri St., 74-63
Win #300	Dec. 20, 1991 Stanford vs. Southern Illinois, 82-63	Win #300 at Stanford	Feb. 14, 1998 vs. USC, 91-63
Win #400	March 16, 1995 Stanford vs. UC Irvine (NCAA), 88-55	Win #400 at Stanford	Nov. 30, 2002 vs. Kansas State, 63-57
Win #500	Nov. 26, 2000 Stanford vs. Pacific, 73-65	Win #500 at Stanford	Feb. 11, 2006 at California, 55-46
Win #600	March 20, 2004 Stanford vs. Missouri, 68-44	Win #600 at Stanford	March 14, 2009 vs. UCLA, 73-47 (at Los Angeles, Calif.)
Win #700	Dec. 28, 2007 Stanford vs. Washington State, 105-47	Win #700 at Stanford	Feb. 25, 2012 vs. Utah, 69-42
Win #800	Dec. 22, 2010 Stanford at San Francisco, 100-45	Win #800 at Stanford	March 21, 2015 vs. CSUN, 73-60
Win #900	Nov. 27, 2013 Stanford vs. FGCU, 83-59 (Puerto Vallarta, Mexico)	Win #900 at Stanford	January 20, 2019 vs. Washington State, 85-64
Win #1,000	Feb. 3, 2017 Stanford vs. USC, 58-42		

THE LAST TIME STANFORD**BEAT A NO. 1 TEAM:**

11/17/14 vs. No. 1 Connecticut (88-86 [OT])

BEAT A TOP 25 TEAM:

1/11/19 at No. 19 Arizona State (72-65)

BEAT A TOP 5 TEAM:

12/15/18 vs. No. 3 Baylor (68-63)

BEAT A TOP 25 TEAM ON THE ROAD:

1/11/19 at No. 19 Arizona State (72-65)

SCORED 100+ POINTS:

11/11/18 vs. Idaho (115)

ALLOWED 100+ POINTS:

12/27/00 at Oklahoma (102)

SCORED FEWER THAN 50 POINTS:

3/5/17 vs. Oregon State (48)

ALLOWED FEWER THAN 50 POINTS:

1/13/19 at Arizona (48)

SCORED FEWER THAN 40 POINTS:

1/24/16 at UCLA (36)

ALLOWED FEWER THAN 40 POINTS:

12/16/17 vs. UNLV (33)

SHOT 60+ PERCENT:

11/25/16 vs. Wichita State (.623)

OPPONENT SHOT 59+ PERCENT:

12/16/10 at DePaul (.596)

SHOT LESS THAN 30 PERCENT:

12/3/17 at Baylor (.294)

OPPONENT SHOT LESS THAN 30 PERCENT:

1/13/19 at Arizona (.274)

FIVE CARDINAL IN DOUBLE-FIGURES:

12/18/18 at Tennessee

(D. Carrington 33, A. Smith 16, K. Williams 16,

Lacie Hull 14, M. Dodson 10)

TWO PLAYERS WITH 20+ POINTS:

1/25/19 at Colorado

(Alanna Smith 26, Kiana Williams 20)

THREE PLAYERS WITH 20+ POINTS:

1/6/19 vs. UCLA

(D. Carrington 30, A. Smith 24, K. Williams 21)

PLAYER SCORED 40+ POINTS:

12/20/11, Nnemkadi Ogumike vs. Tennessee (42)

PLAYER SCORED 30+ POINTS:

1/20/19, Alanna Smith vs. Washington State (34)

PLAYER MADE 10+ FIELD GOALS:

1/20/19, Alanna Smith vs. Washington State (13)

PLAYER MADE 5+ 3-POINTERS:

12/15/18, Alanna Smith vs. Baylor (5)

PLAYER MADE 10+ FREE THROWS:

11/23/18, DiJonai Carrington vs. FGCU (12)

PLAYER HAD 10+ ASSISTS:

1/6/19, Kiana Williams vs. UCLA (10)

PLAYER HAD 15+ REBOUNDS:

1/20/19, Alanna Smith vs. Washington State (15)

PLAYER HAD 5+ BLOCKED SHOTS:

1/25/19, Alanna Smith at Colorado (5)

PLAYER HAD 5+ STEALS:

11/24/18, Lacie Hull vs. American (7)

PLAYER HAD A DOUBLE-DOUBLE:

1/25/19, D. Carrington at Colorado (12 pts, 13 reb)

TWO PLAYERS HAD A DOUBLE-DOUBLE:

1/18/19, Alanna Smith (27 pts, 13 reb) and

DiJonai Carrington (12 pts, 11 reb) vs. Washington

PLAYER HAD A TRIPLE-DOUBLE:

3/18/02, N. Powell vs. Tulane (16 pts, 10 reb, 10 ast)

STANFORD HIGHS/LOWS

Most Points	115 vs. Idaho (11/11/18)
Fewest Points	62 at Buffalo (12/21/18)
Most 1st Quarter Points.....	29 vs. Washington State (1/20/19)
Fewest 1st Quarter Points.....	12 at Utah (1/27/19)
Most 2nd Quarter Points	28 vs. Idaho (11/11/18)
Fewest 2nd Quarter Points	11 at Buffalo (12/21/18)
Most 3rd Quarter Points	40 vs. Idaho (11/11/18)
Fewest 3rd Quarter Points	9 at Gonzaga (12/2/18)
Most 4th Quarter Points	32 at Gonzaga (12/2/18)
Fewest 4th Quarter Points	10, two times [last vs. Washington State (1/20/19)]
Best FG Pct.....	56.6% (30-of-53) at Hawaii (11/25/18)
Worst FG Pct.....	38.3% (23-of-60) vs. Baylor (12/15/18)
Most 3-Pt. FGs Made.....	16 vs. Idaho (11/11/18)
Fewest 3-Pt. FGs Made	5, two times [last vs. CSUN (12/29/18)]
Most 3-Pt. FGs Attempted	41 vs. Idaho (11/11/18)
Fewest 3-Pt. FGs Attempted.....	20 at Buffalo (12/21/18)
Best 3-Pt. FG Pct. (min. five attempts).....	58.3% (14-of-24) at Tennessee (12/18/18)
Worst 3-Pt. FG Pct.....	21.4% (6-of-28) at Colorado (1/25/19)
Most Free Throws Made	18 at Colorado (1/25/19)
Fewest Free Throws Made.....	4, two times [last vs. Washington (1/18/19)]
Most Free Throws Attempted.....	26 vs. FGCU (11/23/18)
Fewest Free Throws Attempted	5 vs. Washington (1/18/19)
Best Free Throw Pct. (min. five attempts)	100.0% (14-of-14) at Arizona State (1/11/19)
Worst Free Throw Pct.	42.9% (9-of-21) vs. Baylor (12/15/18)
Most Rebounds.....	53 vs. CSUN (12/29/18)
Fewest Rebounds	24 at Gonzaga (12/2/18)
Best Rebound Margin.....	+29 vs. Idaho (11/11/18)
Worst Rebound Margin.....	-14 at Gonzaga (12/2/18)
Most Assists	26 vs. Idaho (11/11/18)
Fewest Assists.....	10 vs. UC Davis (11/7/18)
Most Turnovers.....	21 vs. UC Davis (11/7/18)
Fewest Turnovers	6 at Colorado (1/25/19)
Best Turnover Margin.....	+9, two times [last at Colorado (1/25/19)]
Worst Turnover Margin.....	-12 at Tennessee (12/18/18)
Most Blocked Shots	11 vs. San Francisco (11/15/18)
Fewest Blocked Shots	1 vs. FGCU (11/23/18)
Most Steals.....	13 at Hawaii (11/25/18)
Fewest Steals	3, three times [last at Utah (1/27/19)]

OPPONENT HIGHS/LOWS

Most Points	85 by Tennessee (12/18/18)
Fewest Points	43, two times [last by CSUN (12/29/18)]
Most 1st Quarter Points.....	24 by UCLA (1/6/19)
Fewest 1st Quarter Points.....	4 by CSUN (12/29/18)
Most 2nd Quarter Points	22 by FGCU (11/23/18)
Fewest 2nd Quarter Points	4 by Arizona (1/13/19)
Most 3rd Quarter Points	25, two times [last by Arizona State (1/11/19)]
Fewest 3rd Quarter Points	10 vs. UC Davis (11/7/18)
Most 4th Quarter Points	23, two times [last by UCLA (1/6/19)]
Fewest 4th Quarter Points	9 vs. UC Davis (11/7/18)
Best FG Pct.....	54.2% (26-of-48) by Gonzaga (12/2/18)
Worst FG Pct.....	22.6% (14-of-62) by UC Davis (11/7/18)
Most 3-Pt. FGs Made.....	15 by Idaho (11/11/18)
Fewest 3-Pt. FGs Made	3, two times [last by Baylor (12/15/18)]
Most 3-Pt. FGs Attempted	38 by FGCU (11/23/18)
Fewest 3-Pt. FGs Attempted.....	7 by Baylor (12/15/18)
Most FTs Made	19 by Gonzaga (12/2/18)
Fewest FTs Made	2 by Hawaii (11/25/18)
Most FTs Attempted.....	23, two times [last by Tennessee (12/18/18)]
Fewest FTs Attempted	2 by Hawaii (11/25/18)
Most Rebounds	44, two times [last by Colorado (1/25/19)]
Fewest Rebounds	20, two times [last by FGCU (11/23/18)]
Most Assists	17 by Hawaii (11/25/18)
Fewest Assists.....	6, two times [last by Arizona (1/13/19)]
Most Turnovers.....	23 by Gonzaga (12/2/18)
Fewest Turnovers	8 by Tennessee (12/18/18)
Best Turnover Margin.....	+12 by Tennessee (12/18/18)
Worst Turnover Margin.....	-9, two times [last by Colorado (1/25/19)]
Most Blocked Shots.....	6, two times [last by Colorado (1/25/19)]
Fewest Blocked Shots	0, four times [last by Buffalo (12/21/18)]
Most Steals.....	13 by UC Davis (11/7/18)
Fewest Steals	3, two times [last by Washington State (1/20/19)]

STANFORD RECORDS

CAREER SCORING

No.	Player	PTS
1.	Chiney Ogwumike (2011-14)	2,737
2.	Candice Wiggins (2005-08)	2,629
3.	Nnemkadi Ogwumike (2009-12)	2,491
4.	Kate Starbird (1994-97)	2,215
5.	Jayne Appel (2007-10)	2,125
6.	Val Whiting (1990-93)	2,077
7.	Nicole Powell (2001-04)	2,062
8.	Jeanne Ruark Hoff (1979-83)	2,038
9.	Kayla Pedersen (2008-11)	1,941
10.	Trisha Stevens (1988-91)	1,649
11.	Jennifer Azzi (1987-90)	1,634
12.	Katy Steding (1987-90)	1,586
13.	Olympia Scott (1995-98)	1,524
14.	Brooke Smith (2005-07)	1,520
15.	Anita Kaplan (1992-95)	1,509
16.	Lindsey Yamasaki (1999-2002)	1,497
17.	Jeanette Pohlen (2008-11)	1,453
18.	Virginia Sourlis (1983-86)	1,449
19.	Sonja Henning (1988-91)	1,445
20.	Amber Orange (2012-15)	1,426
21.	Louise Smith (1979-82)	1,414
22.	ALANNA SMITH (2016-19)	1,406
23.	Christy Hedgpeth (1991-94)	1,387
24.	Erica McCall (2014-17)	1,376
25.	Kelley Suminski (2002-05)	1,364
26.	Meg Metzger (1980-83)	1,360
27.	Rachel Hemmer (1992-95)	1,289
28.	Vanessa Nygaard (1994-98)	1,279
29.	Julie Zeilstra (1989-91)	1,259
30.	Brittany McPhee (2015-18)	1,250
	Lili Thompson (2014-16)	1,250
32.	Maggie Nelson (1975-78)	1,180
33.	Karlie Samuelson (2014-17)	1,164
34.	Kami Anderson (1985-88)	1,141
35.	Jill Yanke (1986-89)	1,134
36.	Jillian Harmon (2006-09)	1,096
37.	Joslyn Tinkle (2010-13)	1,091
38.	Molly Goodenbour (1990-93)	1,040
39.	Angie Paccione (1979-83)	1,013
40.	Bethany Donaphin (1999-02)	1,010

CAREER BLOCKS

No.	Player	BLKS
1.	Jayne Appel (2007-10)	273
2.	Chiney Ogwumike (2011-14)	202
3.	Val Whiting (1990-93)	201
4.	Erica McCall (2014-17)	200
5.	ALANNA SMITH (2016-19)	196
6.	Kaylee Johnson (2015-18)	166
7.	Kristen Newlin (2004-07)	163
8.	Joslyn Tinkle (2010-13)	150
9.	Bethany Donaphin (1999-2002)	136
	Cori Enghusen (1999-2002)	136

CAREER ASSISTS

No.	Player	ASTS
1.	Sonja Henning (1988-91)	757
2.	Jennifer Azzi (1987-90)	751
3.	Milena Flores (1997-2000)	644
4.	Jamila Wideman (1994-97)	585
5.	Nicole Powell (2001-04)	577
6.	Jeanette Pohlen (2008-11)	560
7.	Amber Orange (2012-15)	552
8.	Virginia Sourlis (1983-86)	483
9.	Molly Goodenbour (1990-93)	441
10.	Kate Starbird (1994-97)	437
11.	Candice Wiggins (2005-08)	436
	MARTA SNIEZEK (2016-19)	428

SINGLE-GAME STEALS

No.	Player	STLS
1.	Katy Steding at Northwestern (12/3/88)	10
2.	Milena Flores vs. Saint Mary's (12/27/99)	9
3.	Jennifer Azzi vs. North Carolina State (12/19/87)	8
4.	LACIE HULL VS. AMERICAN (11/24/18)	7
	Candice Wiggins vs. Old Dominion (11/24/07)	7
	Brooke Smith at Washington State (1/13/07)	7
	Jamila Wideman at Colorado (12/28/96)	7
	Katy Steding at UCLA (1/7/89)	7
	Jennifer Azzi at Fresno State (12/1/87)	7

SINGLE-GAME BLOCKS

No.	Player	BLKS
1.	Kristen Newlin at Washington State (1/2/04)	8
2.	ALANNA SMITH AT ARIZONA (11/13/19)	7
	Erica McCall at Utah (2/21/16)	7
	Joslyn Tinkle at South Carolina (12/19/12)	7
	Joslyn Tinkle at UC Davis (11/30/12)	7

TEAM SINGLE-GAME SCORING

No.	Opponent	PTS
1.	vs. Cal State Fullerton (12/10/94)	122
	vs. Long Beach State (12/8/93)	122
3.	vs. Wisconsin (11/25/88)	119
4.	vs. Arizona (2/23/91)	116
5.	VS. IDAHO (11/11/18)	115
6.	vs. Arkansas (3/24/90)	114
7.	vs. Arizona State (1/13/94)	113
	vs. California (2/1/91)	113
	at Arizona (2/24/90)	113
	vs. Ohio (11/25/89)	113

TEAM SINGLE-GAME FIELD GOALS

No.	Opponent	FGM
1.	vs. Cal State Fullerton (12/10/94)	51
2.	at Arizona (2/24/90)	47
3.	vs. Long Beach State (12/8/93)	46
4.	VS. IDAHO (11/11/18)	45
	vs. California (2/18/94)	45
	vs. Arkansas (3/24/90)	45
	vs. California (3/2/90)	45
	vs. Oregon (2/25/89)	45
9.	vs. Arizona (3/11/11)	44
	vs. Providence (12/28/94)	44
	vs. Illinois State (3/18/89)	44
	vs. Wisconsin (11/25/88)	44

TEAM SINGLE-GAME 3-POINTERS

No.	Opponent	3FGM
1.	VS. IDAHO (11/11/18)	16
	at UCLA (2/24/02)	16
	at Washington (2/24/01)	16
4.	VS. SAN FRANCISCO (11/15/18)	15
	at San Francisco (11/29/17)	15
	vs. Missouri State (11/27/15)	15
	at Arizona (1/17/14)	15
	vs. UCLA (1/20/05)	15
	vs. Washington State (1/31/04)	15
	vs. Arizona (1/10/04)	15

2018-19 Results

RECORD:	OVERALL	HOME	AWAY	NEUTRAL
ALL GAMES	17-2	9-0	6-2	2-0
CONFERENCE	7-1	4-0	3-1	0-0
NON-CONFERENCE	10-1	5-0	3-1	2-0

DATE	TIME	OPPONENT		SCORE	ATTEND	HIGH POINTS	HIGH REBOUNDS
11/7/18	7:00 p.m.	UC DAVIS	W	71-43	2471	(16) Smith, Alanna	(11) Hull, Lexie
11/11/18	2:00 p.m.	IDAHO	W	115-71	2582	(19) Williams, Kiana (19) Smith, Alanna	(9) Smith, Alanna
11/15/18	7:00 p.m.	SAN FRANCISCO	W	96-62	2077	(21) Williams, Kiana	(7) Smith, Alanna
11/23/18	4:30 p.m.	# vs. FGCU	W	88-65	1346	(24) Fingall, Nadia	(9) Carrington, DiJonai
11/24/18	12:00 p.m.	# vs. American	W	71-49	1268	(25) Smith, Alanna	(8) Smith, Alanna
11/25/18	2:30 p.m.	# at Hawaii	W	81-59	1383	(30) Smith, Alanna	(6) Fingall, Nadia
12/2/18	2:00 p.m.	at Gonzaga		73-79 L	6,000	(18) Williams, Kiana	(7) Smith, Alanna
12/15/18	12:00 p.m.	BAYLOR	W	68-63	3,440	(21) Smith, Alanna	(8) Smith, Alanna
12/18/18	6:00 p.m.	at Tennessee	W	95-85	8,051	(33) Carrington, DiJonai	(13) Carrington, DiJonai
12/21/18	12:00 p.m.	at Buffalo	W	62-55	3,412	(30) Smith, Alanna	(13) Smith, Alanna
12/29/18	2:00 p.m.	CSUN	W	69-43	2,520	(16) Dodson, Maya	(12) Carrington, DiJonai
1/4/19	8:00 p.m.	* USC	W	72-64	2,557	(22) Williams, Kiana	(11) Smith, Alanna
1/6/19	1:00 p.m.	* UCLA	W	86-80	3,231	(30) Carrington, DiJonai	(11) Smith, Alanna
1/11/19	7:00 p.m.	* at Arizona State	W	72-65	2,728	(25) Smith, Alanna	(11) Carrington, DiJonai
1/13/19	12:00 p.m.	* at Arizona	W	78-48	2,686	(20) Smith, Alanna	(14) Smith, Alanna
1/18/19	7:00 p.m.	* WASHINGTON	W	91-54	2,535	(27) Smith, Alanna	(13) Smith, Alanna
1/20/19	12:00 p.m.	* WASHINGTON STATE	W	85-64	2,908	(34) Smith, Alanna	(15) Smith, Alanna
1/25/19	7:00 p.m.	* at Colorado	W	80-69	2,373	(26) Smith, Alanna	(13) Carrington, DiJonai
1/27/19	12:00 p.m.	* at Utah		68-75 L	2,983	(19) Smith, Alanna	(9) Smith, Alanna

* = Pac-12

= Rainbow Wahine Showdown; Honolulu, Hawaii

ATTENDANCE	GAMES	TOTALS	AVG/GAME
HOME	9	24321	2702
AWAY	8	29616	3702
NEUTRAL	2	2614	1307
TOTAL	19	56551	2976

2018-19 Game-by-Game Comparison

	Date	Score	W/L	---TOTAL---		--3-PTRS--		FT-FTA Pct		----REBOUNDS----				PF	A	TO	Blk	Stl	Pts	Avg
				FG-FGA	Pct	3FG-FGA	Pct		Pct	Off	Def	Tot	Avg							
UC Davis	11/7	71-43	W	14-62	.226	8-31	.258	7-13	.538	6	19	25	25.0	17	6	18	3	13	43	43.0
Stanford				26-61	.426	6-24	.250	13-18	.722	12	38	50	50.0	18	10	21	6	12	71	71.0
Idaho	11/11	115-71	W	25-59	.424	15-24	.625	6-13	.462	2	18	20	22.5	20	14	16	2	4	71	57.0
Stanford				45-84	.536	16-41	.390	9-13	.692	20	29	49	49.5	19	26	10	7	8	115	93.0
San Francisco	11/15	96-62	W	20-60	.333	5-16	.313	17-23	.739	13	26	39	28.0	18	8	14	0	4	62	58.7
Stanford				36-70	.514	15-32	.469	9-15	.600	9	25	34	44.3	19	24	9	11	4	96	94.0
FGCU	11/23	88-65	W	23-63	.365	10-38	.263	9-11	.818	3	17	20	26.0	19	9	12	0	8	65	60.2
Stanford				30-58	.517	11-22	.500	17-26	.654	12	35	47	45.0	14	22	16	1	7	88	92.5
American	11/24	71-49	W	17-46	.370	3-12	.250	12-15	.800	4	21	25	25.8	19	10	16	1	3	49	58.0
Stanford				26-62	.419	7-22	.318	12-17	.706	15	25	40	44.0	16	18	12	2	12	71	88.2
Hawaii	11/25	81-59	W	22-54	.407	13-22	.591	2-2	1.000	6	16	22	25.2	19	17	19	1	6	59	58.2
Stanford				30-53	.566	8-21	.381	13-17	.765	8	24	32	42.0	11	18	13	5	13	81	87.0
Gonzaga	12/2	73-79	L	26-48	.542	8-13	.615	19-22	.864	10	28	38	27.0	16	14	23	3	9	79	61.1
Stanford				25-57	.439	9-22	.409	14-24	.583	9	15	24	39.4	18	14	15	6	12	73	85.0
Baylor	12/15	68-63	W	22-63	.349	3-7	.429	16-20	.800	12	31	43	29.0	18	13	15	6	4	63	61.4
Stanford				23-60	.383	13-30	.433	9-21	.429	7	23	30	38.2	19	13	10	5	7	68	82.9
Tennessee	12/18	95-85	W	30-75	.400	9-28	.321	16-23	.696	12	19	31	29.2	21	14	8	0	8	85	64.0
Stanford				33-60	.550	14-24	.583	15-21	.714	9	36	45	39.0	15	19	20	3	3	95	84.2
Buffalo	12/21	62-55	W	19-69	.275	6-29	.207	11-17	.647	18	26	44	30.7	15	12	14	0	12	55	63.1
Stanford				23-59	.390	5-20	.250	11-15	.733	12	33	45	39.6	18	18	19	5	5	62	82.0
CSUN	12/29	69-43	W	16-59	.271	5-21	.238	6-12	.500	12	23	35	31.1	9	11	15	4	6	43	61.3
Stanford				30-73	.411	5-21	.238	4-6	.667	19	34	53	40.8	13	14	10	5	7	69	80.8
USC	1/4	72-64	W	26-69	.377	5-24	.208	7-13	.538	13	27	40	31.8	18	10	13	5	8	64	61.5
Stanford				27-67	.403	8-29	.276	10-14	.714	14	32	46	41.2	11	12	15	7	3	72	80.1
UCLA	1/6	86-80	W	31-69	.449	11-24	.458	7-15	.467	16	22	38	32.3	21	10	13	3	6	80	62.9
Stanford				30-63	.476	12-28	.429	14-17	.824	12	25	37	40.9	10	21	15	5	10	86	80.5
Arizona State	1/11	72-65	W	29-74	.392	4-19	.211	3-7	.429	22	18	40	32.9	14	15	13	3	9	65	63.1
Stanford				26-50	.520	6-15	.400	14-14	1.000	6	26	32	40.3	12	12	16	3	8	72	79.9
Arizona	1/13	78-48	W	17-62	.274	5-21	.238	9-12	.750	10	22	32	32.8	14	6	11	3	4	48	62.1
Stanford				28-63	.444	13-31	.419	9-10	.900	11	35	46	40.7	15	16	14	8	4	78	79.8
Washington	1/18	91-54	W	19-55	.345	8-26	.308	8-12	.667	12	20	32	32.8	10	8	22	2	11	54	61.6
Stanford				37-77	.481	13-36	.361	4-5	.800	20	25	45	40.9	9	18	13	3	12	91	80.5
Washington St.	1/20	85-64	W	23-64	.359	6-23	.261	12-15	.800	13	25	38	33.1	13	13	14	3	3	64	61.7
Stanford				32-64	.500	10-21	.476	11-13	.846	7	30	37	40.7	12	14	10	7	5	85	80.8
Colorado	1/25	80-69	W	21-61	.344	12-28	.429	15-17	.882	16	28	44	33.7	21	10	15	6	4	69	62.1
Stanford				28-69	.406	6-28	.214	18-22	.818	16	28	42	40.8	10	17	6	6	10	80	80.7
Utah	1/27	68-75	L	24-55	.436	11-24	.458	16-21	.762	7	31	38	33.9	12	16	13	3	8	75	62.8
Stanford				25-65	.385	8-28	.286	10-15	.667	12	26	38	40.6	15	17	13	7	3	68	80.1

2018-19 Stanford Women's Basketball
Stanford Combined Team Statistics (as of Jan 27, 2019)
All games

RECORD:	OVERALL	HOME	AWAY	NEUTRAL
ALL GAMES	17-2	9-0	6-2	2-0
CONFERENCE	7-1	4-0	3-1	0-0
NON-CONFERENCE	10-1	5-0	3-1	2-0

#	Player	gp-gs	min	Total		3-Point		F-Throw		Rebounds					pf	dq	a	to	blk	stl	pts	avg			
				fg-fga	fg%	3fg-fga	3fg%	ft-fga	ft%	off	def	tot	avg												
11	Smith, Alanna	19-19	528	27.8	148-269	.550	52-108	.481	54-72	.750	37	120	157	8.3	52	3	44	48	49	18	402	21.2			
23	Williams, Kiana	19-19	628	33.1	104-234	.444	48-130	.369	24-32	.750	0	44	44	2.3	21	0	95	49	1	22	280	14.7			
21	Carrington, DiJonai	19-19	520	27.4	85-191	.445	21-61	.344	58-80	.725	29	114	143	7.5	30	0	33	44	3	24	249	13.1			
15	Dodson, Maya	11-0	239	21.7	44-81	.543	0-0	.000	11-22	.500	24	22	46	4.2	22	0	16	10	19	5	99	9.0			
04	Fingall, Nadia	12-12	244	20.3	40-80	.500	5-17	.294	11-21	.524	28	31	59	4.9	23	0	20	16	5	5	96	8.0			
12	Hull, Lexie	10-3	213	21.3	23-56	.411	10-26	.385	9-10	.900	23	31	54	5.4	20	0	7	11	4	11	65	6.5			
24	Hull, Lacie	19-13	490	25.8	34-91	.374	21-56	.375	12-14	.857	12	35	47	2.5	33	0	40	17	7	33	101	5.3			
10	Jerome, Alyssa	19-7	296	15.6	24-62	.387	7-20	.350	12-16	.750	15	45	60	3.2	29	0	12	13	7	2	67	3.5			
03	Wilson, Anna	15-3	163	10.9	18-42	.429	7-28	.250	7-8	.875	6	17	23	1.5	13	0	14	9	0	14	50	3.3			
54	Brown, Jenna	19-0	191	10.1	16-48	.333	2-12	.167	9-17	.529	3	22	25	1.3	10	0	21	19	1	2	43	2.3			
02	Coffee, Shannon	19-0	157	8.3	11-28	.393	4-15	.267	3-4	.750	10	18	28	1.5	8	0	15	6	4	5	29	1.5			
14	Brewer, Mikaela	10-0	39	3.9	5-14	.357	2-6	.333	3-4	.750	4	2	6	0.6	3	0	1	2	2	2	15	1.5			
20	Moschkau, Estella	12-0	50	4.2	5-7	.714	4-6	.667	0-0	.000	1	5	6	0.5	6	0	3	6	0	2	14	1.2			
22	Romano, Alexa	10-0	42	4.2	3-12	.250	2-10	.200	3-3	1.000	1	2	3	0.3	4	0	2	2	0	0	11	1.1			
Team											37	34	71												5
Total.....		19	3800		560-1215	.461	185-495	.374	216-303	.713	230	542	772	40.6	274	3	323	257	102	145	1521	80.1			
Opponents.....		19	3800		424-1167	.363	147-430	.342	198-283	.700	207	437	644	33.9	314	-	216	284	48	130	1193	62.8			

TEAM STATISTICS	STAN	OPP	Date	Opponent	Score	Att.
SCORING	1521	1193	11/7/18	UC DAVIS	w 71-43	2471
Points per game	80.1	62.8	11/11/18	IDAHO	w 115-71	2582
Scoring margin	+17.3	-	11/15/18	SAN FRANCISCO	w 96-62	2077
FIELD GOALS-ATT	560-1215	424-1167	# 11/23/18	vs FGCU	w 88-65	1346
Field goal pct	.461	.363	# 11/24/18	vs American	w 71-49	1268
3 POINT FG-ATT	185-495	147-430	# 11/25/18	at Hawaii	w 81-59	1383
3-point FG pct	.374	.342	12/2/18	at Gonzaga	L 73-79	6000
3-pt FG made per game	9.7	7.7	12/15/18	BAYLOR	w 68-63	3440
FREE THROWS-ATT	216-303	198-283	12/18/18	at Tennessee	w 95-85	8051
Free throw pct	.713	.700	12/21/18	at Buffalo	w 62-55	3412
F-Throws made per game	11.4	10.4	12/29/18	CSUN	w 69-43	2520
REBOUNDS	772	644	* 1/4/19	USC	w 72-64	2557
Rebounds per game	40.6	33.9	* 1/6/19	UCLA	w 86-80	3231
Rebounding margin	+6.7	-	* 1/11/19	at Arizona State	w 72-65	2728
ASSISTS	323	216	* 1/13/19	at Arizona	w 78-48	2686
Assists per game	17.0	11.4	* 1/18/19	WASHINGTON	w 91-54	2535
TURNOVERS	257	284	* 1/20/19	WASHINGTON ST.	w 85-64	2908
Turnovers per game	13.5	14.9	* 1/25/19	at Colorado	w 80-69	2373
Turnover margin	+1.4	-	* 1/27/19	at Utah	L 68-75	2983
Assist/turnover ratio	1.3	0.8				
STEALS	145	130	* = Pac-12			
Steals per game	7.6	6.8	# = Rainbow Wahine Showdown; Honolulu, O'ahu			
BLOCKS	102	48				
Blocks per game	5.4	2.5				
ATTENDANCE	24321	32230				
Home games-Avg/Game	9-2702	8-3702				
Neutral site-Avg/Game	-	2-1307				

Score by Periods	1st	2nd	3rd	4th	Totals
Stanford	370	355	414	382	1521
Opponents	265	277	313	338	1193

**2018-19 Stanford Women's Basketball
Stanford Combined Team Statistics (as of Jan 27, 2019)
Conference games only**

RECORD:	OVERALL	HOME	AWAY	NEUTRAL
ALL GAMES	7-1	4-0	3-1	0-0
CONFERENCE	7-1	4-0	3-1	0-0
NON-CONFERENCE	0-0	0-0	0-0	0-0

#	Player	gp-gs	min	avg	Total		3-Point		F-Throw		Rebounds				pf	dq	a	to	blk	stl	pts	avg			
					fg-fga	fg%	3fg-fga	3fg%	ft-fga	ft%	off	def	tot	avg											
11	Smith, Alanna	8-8	266	33.2	73-141	.518	24-51	.471	24-29	.828	20	65	85	10.6	21	1	15	18	31	7	194	24.3			
23	Williams, Kiana	8-8	274	34.2	52-111	.468	21-60	.350	12-14	.857	0	19	19	2.4	7	0	45	21	1	11	137	17.1			
21	Carrington, DiJonai	8-8	252	31.5	45-105	.429	10-32	.313	28-36	.778	18	50	68	8.5	12	0	12	22	1	6	128	16.0			
24	Hull, Lacie	8-8	227	28.4	15-44	.341	8-27	.296	8-10	.800	3	13	16	2.0	13	0	20	7	3	12	46	5.8			
12	Hull, Lexie	7-0	136	19.4	11-29	.379	4-11	.364	7-8	.875	14	19	33	4.7	12	0	4	7	1	3	33	4.7			
10	Jerome, Alyssa	8-7	153	19.1	13-30	.433	3-10	.300	1-1	1.000	7	19	26	3.3	14	0	5	4	4	0	30	3.8			
03	Wilson, Anna	8-0	86	10.8	11-19	.579	3-10	.300	2-2	1.000	3	5	8	1.0	2	0	7	6	0	7	27	3.4			
54	Brown, Jenna	8-0	68	8.5	7-18	.389	1-4	.250	4-4	1.000	1	3	4	0.5	3	0	5	11	1	2	19	2.4			
04	Fingall, Nadia	1-1	18	18.0	1-2	.500	0-1	.000	0-0	.000	2	2	4	4.0	1	0	2	2	1	0	2	2.0			
14	Brewer, Mikaela	4-0	18	4.5	2-7	.286	2-3	.667	1-2	.500	3	0	3	0.8	1	0	1	0	1	2	7	1.8			
02	Coffee, Shannon	8-0	89	11.1	3-11	.273	0-6	.000	3-4	.750	7	9	16	2.0	5	0	10	2	2	5	9	1.1			
20	Moschkau, Estella	4-0	13	3.3	0-1	.000	0-1	.000	0-0	.000	0	3	3	0.8	3	0	1	0	0	0	0	0.0			
Team											20	18	38												2
Total.....		8	1600	233-518		.450	76-216	.352	90-110	.818	98	225	323	40.4	94	1	127	102	46	55	632	79.0			
Opponents.....		8	1600	190-509		.373	62-189	.328	77-112	.688	109	193	302	37.8	123	-	88	114	28	53	519	64.9			

TEAM STATISTICS	STAN	OPP	Date	Opponent	Score	Att.
SCORING	632	519	* 1/4/19	USC	w 72-64	2557
Points per game	79.0	64.9	* 1/6/19	UCLA	w 86-80	3231
Scoring margin	+14.1	-	* 1/11/19	at Arizona State	w 72-65	2728
FIELD GOALS-ATT	233-518	190-509	* 1/13/19	at Arizona	w 78-48	2686
Field goal pct	.450	.373	* 1/18/19	WASHINGTON	w 91-54	2535
3 POINT FG-ATT	76-216	62-189	* 1/20/19	WASHINGTON ST.	w 85-64	2908
3-point FG pct	.352	.328	* 1/25/19	at Colorado	w 80-69	2373
3-pt FG made per game	9.5	7.8	* 1/27/19	at Utah	L 68-75	2983
FREE THROWS-ATT	90-110	77-112				
Free throw pct	.818	.688	* = Pac-12			
F-Throws made per game	11.3	9.6	# = Rainbow Wahine Showdown; Honolulu, O'ahu			
REBOUNDS	323	302				
Rebounds per game	40.4	37.8				
Rebounding margin	+2.6	-				
ASSISTS	127	88				
Assists per game	15.9	11.0				
TURNOVERS	102	114				
Turnovers per game	12.8	14.3				
Turnover margin	+1.5	-				
Assist/turnover ratio	1.2	0.8				
STEALS	55	53				
Steals per game	6.9	6.6				
BLOCKS	46	28				
Blocks per game	5.8	3.5				
ATTENDANCE	11231	10770				
Home games-Avg/Game	4-2808	4-2692				
Neutral site-Avg/Game	-	0-0				

Score by Periods	1st	2nd	3rd	4th	Totals
Stanford	160	134	191	147	632
Opponents	125	112	127	155	519

POINTS-REBOUNDS-ASSISTS

OPPONENT	#2 SC	#3 AW	#4 NF	#10 AJ	#11 AS	#12 LH	#13 MS	#14 MB	#15 MD	#20 EM	#21 DC	#23 KW	#24 LH	#54 JB
UC Davis	0-1-1	0-5-1	2-4-0	6-8-0	16-2-1	11-11-0	DNP	0-0-0	10-6-1	0-0-0	0-2-1	14-1-3	2-3-0	4-3-2
Idaho	2-1-0	10-1-1	16-8-2	4-6-2	19-9-4	17-5-0	DNP	2-0-0	10-5-0	3-0-1	6-4-1	19-3-9	0-2-2	7-3-3
San Francisco	0-0-2	2-0-0	7-3-2	7-2-0	18-7-3	4-5-3	DNP	4-1-0	10-3-6	5-1-1	9-5-4	21-0-3	6-1-0	3-2-0
FGCU	0-1-0	8-4-3	24-8-5	2-3-1	6-6-2	DNP	DNP	DNP	6-4-1	3-0-0	16-9-3	17-6-2	3-4-4	0-0-1
American	3-1-0	0-1-2	10-5-2	3-3-0	25-8-4	DNP	DNP	DNP	4-3-1	0-0-0	13-7-1	9-0-7	0-3-0	4-3-1
Hawaii	2-1-0	2-4-0	7-6-1	4-2-1	30-4-3	DNP	DNP	0-0-0	7-1-0	0-0-0	12-4-4	9-4-3	8-3-6	0-0-0
Gonzaga	0-0-0	DNP	5-3-3	6-4-0	13-7-1	DNP	DNP	DNP	8-4-2	DNP	13-3-1	18-1-3	9-1-3	1-0-1
Baylor	9-2-0	1-0-0	2-3-1	0-2-0	21-8-2	DNP	DNP	DNP	9-5-1	DNP	10-6-2	13-1-5	3-2-0	0-1-2
Tennessee	0-2-1	DNP	3-6-1	0-2-0	16-3-3	DNP	DNP	DNP	10-9-2	DNP	33-13-2	16-5-7	14-3-1	3-1-2
Buffalo	0-0-0	DNP	12-7-1	0-0-1	30-13-5	DNP	DNP	0-0-0	9-1-1	0-0-0	4-10-0	7-2-7	0-5-2	0-1-1
CSUN	4-3-1	DNP	6-2-0	5-2-2	14-5-1	DNP	DNP	2-2-0	16-5-1	3-2-0	5-12-2	0-2-1	10-4-2	2-7-3
USC	6-4-0	0-0-0	2-4-2	0-2-1	19-11-2	DNP	DNP	DNP	DNP	DNP	14-7-0	22-4-4	7-8-0	2-0-3
UCLA	0-0-1	0-0-0	DNP	6-3-0	24-11-3	0-3-0	DNP	DNP	DNP	DNP	30-9-1	21-2-10	5-2-6	0-0-0
Arizona State	0-1-2	6-0-1	DNP	2-1-0	25-6-2	4-5-0	DNP	DNP	DNP	DNP	17-11-1	10-4-4	8-1-2	0-0-0
Arizona	2-3-1	2-2-0	DNP	2-6-1	20-14-2	8-5-0	DNP	1-1-0	DNP	0-2-1	19-8-1	13-1-7	2-1-3	9-1-0
Washington	1-2-2	5-3-5	DNP	5-2-0	27-13-1	3-5-1	DNP	6-2-1	DNP	0-0-0	12-11-5	22-1-3	6-0-0	4-1-0
Washington St.	0-4-1	5-0-0	DNP	4-2-1	34-15-3	0-7-1	DNP	0-0-0	DNP	0-1-0	11-4-3	19-0-3	8-1-1	4-1-1
Colorado	0-1-0	9-2-1	DNP	2-4-1	26-6-2	8-6-1	DNP	0-0-0	DNP	0-0-0	12-13-0	20-2-7	3-0-5	0-1-0
Utah	0-1-3	0-1-0	DNP	9-6-1	19-9-0	10-2-1	DNP	DNP	DNP	DNP	13-5-1	10-5-7	7-3-3	0-0-1

GAME-BY-GAME STARTERS

OPPONENT	DATE	SCORE	W/L	1	2	3	4	5
UC Davis	11/7	71-43	W	Williams	Lexie Hull	Carrington	Smith	Fingall
Idaho	11/11	115-71	W	Williams	Lexie Hull	Carrington	Smith	Fingall
San Francisco	11/15	96-62	W	Williams	Lexie Hull	Carrington	Smith	Fingall
FGCU	11/23	88-65	W	Williams	Wilson	Carrington	Smith	Fingall
American	11/24	71-49	W	Williams	Wilson	Carrington	Smith	Fingall
Hawaii	11/25	81-59	W	Williams	Wilson	Carrington	Smith	Fingall
Gonzaga	12/2	73-79	L	Williams	Lacie Hull	Carrington	Smith	Fingall
Baylor	12/15	68-63	W	Williams	Lacie Hull	Carrington	Smith	Fingall
Tennessee	12/18	95-85	W	Williams	Lacie Hull	Carrington	Smith	Fingall
Buffalo	12/21	62-55	W	Williams	Lacie Hull	Carrington	Smith	Fingall
CSUN	12/29	69-43	W	Williams	Lacie Hull	Carrington	Smith	Fingall
USC	1/4	72-64	W	Williams	Lacie Hull	Carrington	Smith	Fingall
UCLA	1/6	86-80	W	Williams	Lacie Hull	Carrington	Smith	Jerome
Arizona State	1/11	72-65	W	Williams	Lacie Hull	Carrington	Smith	Jerome
Arizona	1/13	78-48	W	Williams	Lacie Hull	Carrington	Smith	Jerome
Washington	1/18	91-54	W	Williams	Lacie Hull	Carrington	Smith	Jerome
Washington State	1/20	85-64	W	Williams	Lacie Hull	Carrington	Smith	Jerome
Colorado	1/25	80-69	W	Williams	Lacie Hull	Carrington	Smith	Jerome
Utah	1/27	68-75	L	Williams	Lacie Hull	Carrington	Smith	Jerome

**2018-19 Stanford Women's Basketball
Stanford Season/Career Statistics (as of Jan 27, 2019)
All games**

SEASON STATISTICS

CAREER STATISTICS

SUMMARY	gp-gs	min/g	fg%	3fg%	ft%	r/g	a/g	stl	blk	pts/g	gp-gs	min/g	fg%	3fg%	ft%	r/g	a/g	stl	blk	pts/g
Smith, Alanna	19-19	27.8	.550	.481	.750	8.3	2.3	18	49	21.2	126-57	21.1	.484	.366	.655	5.5	1.0	93	196	11.2
Williams, Kiana	19-19	33.1	.444	.369	.750	2.3	5.0	22	1	14.7	54-45	28.3	.427	.378	.789	1.9	3.0	52	6	11.9
Carrington, DiJonai	19-19	27.4	.445	.344	.725	7.5	1.7	24	3	13.1	86-26	17.6	.423	.296	.692	4.7	1.2	89	13	7.2
Dodson, Maya	11-0	21.7	.543	.000	.500	4.2	1.5	5	19	9.0	44-4	13.9	.516	.000	.436	2.6	0.5	7	46	4.9
Fingall, Nadia	12-12	20.3	.500	.294	.524	4.9	1.7	5	5	8.0	82-20	12.9	.487	.328	.571	3.2	0.7	34	31	4.4
Hull, Lexie	10-3	21.3	.411	.385	.900	5.4	0.7	11	4	6.5	10-3	21.3	.411	.385	.900	5.4	0.7	11	4	6.5
Hull, Lacie	19-13	25.8	.374	.375	.857	2.5	2.1	33	7	5.3	19-13	25.8	.374	.375	.857	2.5	2.1	33	7	5.3
Jerome, Alyssa	19-7	15.6	.387	.350	.750	3.2	0.6	2	7	3.5	53-8	11.9	.394	.314	.727	1.8	0.5	3	10	2.6
Wilson, Anna	15-3	10.9	.429	.250	.875	1.5	0.9	14	0	3.3	42-5	10.4	.353	.295	.667	1.2	0.6	27	1	3.3
Brown, Jenna	19-0	10.1	.333	.167	.529	1.3	1.1	2	1	2.3	19-0	10.1	.333	.167	.529	1.3	1.1	2	1	2.3
Coffee, Shannon	19-0	8.3	.393	.267	.750	1.5	0.8	5	4	1.5	78-2	5.1	.430	.293	.444	1.1	0.3	10	12	1.6
Brewer, Mikaela	10-0	3.9	.357	.333	.750	0.6	0.1	2	2	1.5	37-0	3.5	.275	.258	.750	0.4	0.2	3	2	1.1
Moschkau, Estella	12-0	4.2	.714	.667	.000	0.5	0.3	2	0	1.2	35-0	2.8	.563	.538	.500	0.3	0.1	2	0	0.7
Romano, Alexa	10-0	4.2	.250	.200	1.000	0.3	0.2	0	0	1.1	78-8	6.5	.344	.300	.727	0.7	0.4	20	4	1.6

SCORING	fg-fga	fg%	3fg-fga	3fg%	ft-fta	ft%	pts	pts/g	fg-fga	fg%	3fg-fga	3fg%	ft-fta	ft%	pts	pts/g
Smith, Alanna	148-269	.550	52-108	.481	54-72	.750	402	21.2	546-1128	.484	126-344	.366	188-287	.655	1406	11.2
Williams, Kiana	104-234	.444	48-130	.369	24-32	.750	280	14.7	232-543	.427	119-315	.378	60-76	.789	643	11.9
Carrington, DiJonai	85-191	.445	21-61	.344	58-80	.725	249	13.1	227-537	.423	56-189	.296	108-156	.692	618	7.2
Dodson, Maya	44-81	.543	0-0	.000	11-22	.500	99	9.0	95-184	.516	0-0	.000	24-55	.436	214	4.9
Fingall, Nadia	40-80	.500	5-17	.294	11-21	.524	96	8.0	148-304	.487	20-61	.328	48-84	.571	364	4.4
Hull, Lexie	23-56	.411	10-26	.385	9-10	.900	65	6.5	23-56	.411	10-26	.385	9-10	.900	65	6.5
Hull, Lacie	34-91	.374	21-56	.375	12-14	.857	101	5.3	34-91	.374	21-56	.375	12-14	.857	101	5.3
Jerome, Alyssa	24-62	.387	7-20	.350	12-16	.750	67	3.5	52-132	.394	16-51	.314	16-22	.727	136	2.6
Wilson, Anna	18-42	.429	7-28	.250	7-8	.875	50	3.3	48-136	.353	31-105	.295	10-15	.667	137	3.3
Brown, Jenna	16-48	.333	2-12	.167	9-17	.529	43	2.3	16-48	.333	2-12	.167	9-17	.529	43	2.3
Coffee, Shannon	11-28	.393	4-15	.267	3-4	.750	29	1.5	49-114	.430	12-41	.293	16-36	.444	126	1.6
Brewer, Mikaela	5-14	.357	2-6	.333	3-4	.750	15	1.5	14-51	.275	8-31	.258	3-4	.750	39	1.1
Moschkau, Estella	5-7	.714	4-6	.667	0-0	.000	14	1.2	9-16	.563	7-13	.538	1-2	.500	26	0.7
Romano, Alexa	3-12	.250	2-10	.200	3-3	1.000	11	1.1	43-125	.344	21-70	.300	16-22	.727	123	1.6

TOTALS	o-reb	d-reb	t-reb	pf	fo	ast	to	a/to	o-reb	d-reb	t-reb	pf	fo	ast	to	a/to
Smith, Alanna	37	120	157	52	3	44	48	0.9	223	467	690	299	10	132	221	0.6
Williams, Kiana	0	44	44	21	0	95	49	1.9	4	98	102	59	0	162	89	1.8
Carrington, DiJonai	29	114	143	30	0	33	44	0.8	101	300	401	131	0	105	137	0.8
Dodson, Maya	24	22	46	22	0	16	10	1.6	56	57	113	60	1	21	36	0.6
Fingall, Nadia	28	31	59	23	0	20	16	1.3	102	157	259	127	1	61	68	0.9
Hull, Lexie	23	31	54	20	0	7	11	0.6	23	31	54	20	0	7	11	0.6
Hull, Lacie	12	35	47	33	0	40	17	2.4	12	35	47	33	0	40	17	2.4
Jerome, Alyssa	15	45	60	29	0	12	13	0.9	26	70	96	56	0	26	35	0.7
Wilson, Anna	6	17	23	13	0	14	9	1.6	7	45	52	39	0	27	29	0.9
Brown, Jenna	3	22	25	10	0	21	19	1.1	3	22	25	10	0	21	19	1.1
Coffee, Shannon	10	18	28	8	0	15	6	2.5	22	64	86	32	0	25	37	0.7
Brewer, Mikaela	4	2	6	3	0	1	2	0.5	5	8	13	6	0	7	12	0.6
Moschkau, Estella	1	5	6	6	0	3	6	0.5	3	7	10	10	0	5	6	0.8
Romano, Alexa	1	2	3	4	0	2	2	1.0	10	44	54	22	0	32	31	1.0

2018-19 Individual Game-by-Game

#02 Coffee, Shannon

Opponent	Date	gs	min	Total		3-Pointers		Free throws		Rebounds				pf	a	t/o	blk	stl	pts	avg
				fg-fga	pct	3fg-fga	pct	ft-fta	pct	off	def	tot	avg							
UC DAVIS	11/7/18		6	0-1	.000	0-0	.000	0-0	.000	1	0	1	1.0	1	1	1	0	0	0	0.0
IDAHO	11/11/18		6	1-1	1.000	0-0	.000	0-0	.000	0	1	1	1.0	1	0	0	0	0	2	1.0
SAN FRANCISCO	11/15/18		8	0-1	.000	0-1	.000	0-0	.000	0	0	0	0.7	0	2	0	1	0	0	0.7
vs FGCU	11/23/18		1	0-0	.000	0-0	.000	0-0	.000	0	1	1	0.8	0	0	0	0	0	0	0.5
vs American	11/24/18		4	1-3	.333	1-2	.500	0-0	.000	0	1	1	0.8	0	0	0	0	0	3	1.0
at Hawaii	11/25/18		5	1-2	.500	0-0	.000	0-0	.000	0	1	1	0.8	0	0	0	0	0	2	1.2
at Gonzaga	12/2/18		2	0-0	.000	0-0	.000	0-0	.000	0	0	0	0.7	0	0	0	0	0	0	1.0
BAYLOR	12/15/18		19	3-4	.750	3-4	.750	0-0	.000	0	2	2	0.9	1	0	1	0	0	9	2.0
at Tennessee	12/18/18		8	0-2	.000	0-2	.000	0-0	.000	0	2	2	1.0	0	1	1	0	0	0	1.8
at Buffalo	12/21/18		0	0-0	.000	0-0	.000	0-0	.000	0	0	0	0.9	0	0	0	0	0	0	1.6
CSUN	12/29/18		9	2-3	.667	0-0	.000	0-0	.000	2	1	3	1.1	0	1	1	1	0	4	1.8
USC	1/4/19		12	2-3	.667	0-0	.000	2-2	1.000	2	2	4	1.3	0	0	1	0	0	6	2.2
UCLA	1/6/19		12	0-0	.000	0-0	.000	0-0	.000	0	0	0	1.2	1	1	0	0	1	0	2.0
at Arizona State	1/11/19		9	0-1	.000	0-1	.000	0-0	.000	0	1	1	1.2	1	2	0	1	2	0	1.9
at Arizona	1/13/19		13	1-4	.250	0-3	.000	0-0	.000	2	1	3	1.3	0	1	0	0	1	2	1.9
WASHINGTON	1/18/19		13	0-1	.000	0-1	.000	1-2	.500	2	0	2	1.4	0	2	1	0	1	1	1.8
WASHINGTON ST.	1/20/19		11	0-0	.000	0-0	.000	0-0	.000	0	4	4	1.5	2	1	0	0	0	0	1.7
at Colorado	1/25/19		8	0-0	.000	0-0	.000	0-0	.000	1	0	1	1.5	0	0	0	0	0	0	1.6
at Utah	1/27/19		11	0-2	.000	0-1	.000	0-0	.000	0	1	1	1.5	1	3	0	1	0	0	1.5
Totals		0	157	11-28	.393	4-15	.267	3-4	.750	10	18	28	1.5	8	15	6	4	5	29	1.5

#03 Wilson, Anna

Opponent	Date	gs	min	Total		3-Pointers		Free throws		Rebounds				pf	a	t/o	blk	stl	pts	avg
				fg-fga	pct	3fg-fga	pct	ft-fta	pct	off	def	tot	avg							
UC DAVIS	11/7/18		13	0-4	.000	0-4	.000	0-0	.000	0	5	5	5.0	1	1	1	0	1	0	0.0
IDAHO	11/11/18		11	3-8	.375	2-6	.333	2-2	1.000	1	0	1	3.0	2	1	0	0	2	10	5.0
SAN FRANCISCO	11/15/18		13	1-3	.333	0-1	.000	0-0	.000	0	0	0	2.0	2	0	0	0	1	2	4.0
vs FGCU	11/23/18	*	17	3-6	.500	2-5	.400	0-0	.000	1	3	4	2.5	2	3	1	0	1	8	5.0
vs American	11/24/18	*	5	0-0	.000	0-0	.000	0-0	.000	1	0	1	2.2	3	2	0	0	0	0	4.0
at Hawaii	11/25/18	*	15	0-2	.000	0-2	.000	2-2	1.000	0	4	4	2.5	1	0	0	0	1	2	3.7
at Gonzaga	12/2/18		dnp	-	-	-	-	-	-	-	-	-	-	-	-	-	-	-	-	-
BAYLOR	12/15/18		3	0-0	.000	0-0	.000	1-2	.500	0	0	0	2.1	0	0	1	0	1	1	3.3
at Tennessee	12/18/18		dnp	-	-	-	-	-	-	-	-	-	-	-	-	-	-	-	-	-
at Buffalo	12/21/18		dnp	-	-	-	-	-	-	-	-	-	-	-	-	-	-	-	-	-
USC	1/4/19		5	0-0	.000	0-0	.000	0-0	.000	0	0	0	1.9	0	0	0	0	0	0	2.9
UCLA	1/6/19		1	0-0	.000	0-0	.000	0-0	.000	0	0	0	1.7	0	0	1	0	0	0	2.6
at Arizona State	1/11/19		18	3-5	.600	0-1	.000	0-0	.000	0	0	0	1.5	1	1	2	0	1	6	2.9
at Arizona	1/13/19		11	1-3	.333	0-2	.000	0-0	.000	0	2	2	1.5	0	0	0	0	1	2	2.8
WASHINGTON	1/18/19		14	1-1	1.000	1-1	1.000	2-2	1.000	0	3	3	1.7	0	5	0	0	3	5	3.0
WASHINGTON ST.	1/20/19		10	2-2	1.000	1-1	1.000	0-0	.000	0	0	0	1.5	1	0	0	0	0	5	3.2
at Colorado	1/25/19		22	4-8	.500	1-5	.200	0-0	.000	2	0	2	1.6	0	1	1	0	2	9	3.6
at Utah	1/27/19		5	0-0	.000	0-0	.000	0-0	.000	1	0	1	1.5	0	0	2	0	0	0	3.3
Totals		3	163	18-42	.429	7-28	.250	7-8	.875	6	17	23	1.5	13	14	9	0	14	50	3.3

2018-19 Individual Game-by-Game

#04 Fingall, Nadia

Opponent	Date	qs	min	Total		3-Pointers		Free throws		Rebounds				pf	a	t/o	blk	stl	pts	avg	
				fg-fga	pct	3fg-fga	pct	ft-fta	pct	off	def	tot	avg								
UC DAVIS	11/7/18	*	16	0-1	.000	0-0	.000	2-2	1.000	1	3	4	4.0	3	0	3	0	0	2	2.0	
IDAHO	11/11/18	*	20	7-9	.778	0-0	.000	2-5	.400	3	5	8	6.0	1	2	1	2	0	16	9.0	
SAN FRANCISCO	11/15/18	*	13	3-6	.500	1-3	.333	0-0	.000	2	1	3	5.0	3	2	1	0	0	7	8.3	
vs FGCU	11/23/18	*	30	11-14	.786	1-2	.500	1-4	.250	5	3	8	5.8	2	5	1	0	1	24	12.3	
vs American	11/24/18	*	24	3-8	.375	1-4	.250	3-4	.750	4	1	5	5.6	3	2	1	0	1	10	11.8	
at Hawaii	11/25/18	*	24	3-7	.429	1-1	1.000	0-0	.000	2	4	6	5.7	1	1	2	0	1	7	11.0	
at Gonzaga	12/2/18	*	25	2-4	.500	1-2	.500	0-0	.000	1	2	3	5.3	2	3	1	1	2	5	10.1	
BAYLOR	12/15/18	*	17	1-8	.125	0-3	.000	0-0	.000	2	1	3	5.0	3	1	1	1	0	2	9.1	
at Tennessee	12/18/18	*	18	1-4	.250	0-0	.000	1-2	.500	2	4	6	5.1	0	1	2	0	0	3	8.4	
at Buffalo	12/21/18	*	29	5-9	.556	0-0	.000	2-4	.500	3	4	7	5.3	1	1	1	0	0	12	8.8	
CSUN	12/29/18	*	10	3-8	.375	0-1	.000	0-0	.000	1	1	2	5.0	3	0	0	0	0	6	8.5	
USC	1/4/19	*	18	1-2	.500	0-1	.000	0-0	.000	2	2	4	4.9	1	2	2	1	0	2	8.0	
at Arizona State	1/11/19		dnp	-	-	-	-	-	-	-	-	-	-	-	-	-	-	-	-	-	
Totals			12	244	40-80	.500	5-17	.294	11-21	.524	28	31	59	4.9	23	20	16	5	5	96	8.0

#10 Jerome, Alyssa

Opponent	Date	qs	min	Total		3-Pointers		Free throws		Rebounds				pf	a	t/o	blk	stl	pts	avg	
				fg-fga	pct	3fg-fga	pct	ft-fta	pct	off	def	tot	avg								
UC DAVIS	11/7/18		16	2-5	.400	0-1	.000	2-2	1.000	2	6	8	8.0	0	0	1	0	0	6	6.0	
IDAHO	11/11/18		13	1-2	.500	0-1	.000	2-2	1.000	0	6	6	7.0	4	2	1	0	0	4	5.0	
SAN FRANCISCO	11/15/18		16	3-4	.750	1-2	.500	0-1	.000	0	2	2	5.3	2	0	0	2	0	7	5.7	
vs FGCU	11/23/18		14	1-4	.250	0-0	.000	0-0	.000	0	3	3	4.8	1	1	2	0	0	2	4.8	
vs American	11/24/18		12	0-2	.000	0-1	.000	3-4	.750	2	1	3	4.4	2	0	1	0	0	3	4.4	
at Hawaii	11/25/18		11	0-3	.000	0-1	.000	4-6	.667	2	0	2	4.0	1	1	0	0	1	4	4.3	
at Gonzaga	12/2/18		18	2-5	.400	2-2	1.000	0-0	.000	1	3	4	4.0	1	0	0	1	0	6	4.6	
BAYLOR	12/15/18		8	0-1	.000	0-0	.000	0-0	.000	0	2	2	3.8	0	0	0	0	0	0	4.0	
at Tennessee	12/18/18		4	0-1	.000	0-0	.000	0-0	.000	1	1	2	3.6	0	0	2	0	0	0	3.6	
at Buffalo	12/21/18		9	0-1	.000	0-0	.000	0-0	.000	0	0	0	3.2	2	1	1	0	1	0	3.2	
CSUN	12/29/18		22	2-4	.500	1-2	.500	0-0	.000	0	2	2	3.1	2	2	1	0	0	5	3.4	
USC	1/4/19		14	0-1	.000	0-0	.000	0-0	.000	1	1	2	3.0	1	1	0	0	0	0	3.1	
UCLA	1/6/19	*	20	2-2	1.000	2-2	1.000	0-0	.000	0	3	3	3.0	1	0	0	0	0	6	3.3	
at Arizona State	1/11/19	*	13	1-3	.333	0-0	.000	0-0	.000	0	1	1	2.9	1	0	1	0	0	2	3.2	
at Arizona	1/13/19	*	28	1-5	.200	0-3	.000	0-0	.000	0	6	6	3.1	3	1	3	1	0	2	3.1	
WASHINGTON	1/18/19	*	18	2-2	1.000	0-0	.000	1-1	1.000	1	1	2	3.0	2	0	0	0	0	5	3.3	
WASHINGTON ST.	1/20/19	*	24	2-7	.286	0-2	.000	0-0	.000	0	2	2	2.9	1	1	0	1	0	4	3.3	
at Colorado	1/25/19	*	15	1-2	.500	0-0	.000	0-0	.000	3	1	4	3.0	1	1	0	1	0	2	3.2	
at Utah	1/27/19	*	21	4-8	.500	1-3	.333	0-0	.000	2	4	6	3.2	4	1	0	1	0	9	3.5	
Totals			7	296	24-62	.387	7-20	.350	12-16	.750	15	45	60	3.2	29	12	13	7	2	67	3.5

2018-19 Individual Game-by-Game

#11 Smith, Alanna

Opponent	Date	gs	min	Total		3-Pointers		Free throws		Rebounds				pf	a	t/o	blk	stl	pts	avg	
				fg-fga	pct	3fg-fga	pct	ft-fa	pct	off	def	tot	avg								
UC DAVIS	11/7/18	*	15	4-7	.571	1-2	.500	7-7	1.000	1	1	2	2.0	4	1	4	1	1	16	16.0	
IDAHO	11/11/18	*	24	8-12	.667	2-5	.400	1-1	1.000	4	5	9	5.5	0	4	3	1	2	19	17.5	
SAN FRANCISCO	11/15/18	*	26	6-12	.500	5-8	.625	1-2	.500	0	7	7	6.0	1	3	1	4	1	18	17.7	
vs FGCU	11/23/18	*	13	1-5	.200	0-1	.000	4-5	.800	2	4	6	6.0	4	2	3	1	1	6	14.8	
vs American	11/24/18	*	31	10-18	.556	3-6	.500	2-3	.667	1	7	8	6.4	1	4	3	1	2	25	16.8	
at Hawaii	11/25/18	*	25	12-15	.800	3-6	.500	3-3	1.000	2	2	4	6.0	2	3	3	1	0	30	19.0	
at Gonzaga	12/2/18	*	24	4-9	.444	2-5	.400	3-6	.500	2	5	7	6.1	5	1	3	2	3	13	18.1	
BAYLOR	12/15/18	*	28	7-12	.583	5-9	.556	2-8	.250	0	8	8	6.4	4	2	3	2	1	21	18.5	
at Tennessee	12/18/18	*	21	5-6	.833	3-4	.750	3-4	.750	1	2	3	6.0	5	3	2	1	0	16	18.2	
at Buffalo	12/21/18	*	38	12-22	.545	4-9	.444	2-2	1.000	3	10	13	6.7	2	5	5	3	0	30	19.4	
CSUN	12/29/18	*	17	6-10	.600	0-2	.000	2-2	1.000	1	4	5	6.5	3	1	0	1	0	14	18.9	
USC	1/4/19	*	39	8-21	.381	3-9	.333	0-0	.000	2	9	11	6.9	2	2	1	5	0	19	18.9	
UCLA	1/6/19	*	40	8-18	.444	3-5	.600	5-6	.833	2	9	11	7.2	4	3	2	5	2	24	19.3	
at Arizona State	1/11/19	*	37	9-15	.600	1-3	.333	6-6	1.000	1	5	6	7.1	4	2	2	1	1	25	19.7	
at Arizona	1/13/19	*	27	8-16	.500	4-6	.667	0-0	.000	5	9	14	7.6	2	2	3	7	0	20	19.7	
WASHINGTON	1/18/19	*	29	12-18	.667	3-6	.500	0-0	.000	6	7	13	7.9	1	1	3	3	0	27	20.2	
WASHINGTON ST.	1/20/19	*	31	13-17	.765	4-5	.800	4-6	.667	3	12	15	8.4	0	3	1	2	1	34	21.0	
at Colorado	1/25/19	*	38	9-19	.474	3-8	.375	5-6	.833	1	5	6	8.2	3	2	2	5	3	26	21.3	
at Utah	1/27/19	*	25	6-17	.353	3-9	.333	4-5	.800	0	9	9	8.3	5	0	4	3	0	19	21.2	
Totals			19	528	148-269	.550	52-108	.481	54-72	.750	37	120	157	8.3	52	44	48	49	18	402	21.2

#12 Hull, Lexie

Opponent	Date	gs	min	Total		3-Pointers		Free throws		Rebounds				pf	a	t/o	blk	stl	pts	avg	
				fg-fga	pct	3fg-fga	pct	ft-fa	pct	off	def	tot	avg								
UC DAVIS	11/7/18	*	27	5-10	.500	1-4	.250	0-0	.000	3	8	11	11.0	3	0	2	1	4	11	11.0	
IDAHO	11/11/18	*	25	6-12	.500	5-10	.500	0-0	.000	2	3	5	8.0	3	0	0	2	2	17	14.0	
SAN FRANCISCO	11/15/18	*	25	1-5	.200	0-1	.000	2-2	1.000	4	1	5	7.0	2	3	2	0	2	4	10.7	
vs FGCU	11/23/18	dnp		-	-	-	-	-	-	-	-	-	-	-	-	-	-	-	-	-	
vs American	11/24/18	dnp		-	-	-	-	-	-	-	-	-	-	-	-	-	-	-	-	-	
at Hawaii	11/25/18	dnp		-	-	-	-	-	-	-	-	-	-	-	-	-	-	-	-	-	
at Gonzaga	12/2/18	dnp		-	-	-	-	-	-	-	-	-	-	-	-	-	-	-	-	-	
at Tennessee	12/18/18	dnp		-	-	-	-	-	-	-	-	-	-	-	-	-	-	-	-	-	
at Buffalo	12/21/18	dnp		-	-	-	-	-	-	-	-	-	-	-	-	-	-	-	-	-	
UCLA	1/6/19		8	0-4	.000	0-2	.000	0-0	.000	3	0	3	6.0	1	0	3	0	0	0	8.0	
at Arizona State	1/11/19		15	1-2	.500	0-0	.000	2-2	1.000	2	3	5	5.8	1	0	1	1	0	4	7.2	
at Arizona	1/13/19		14	3-4	.750	2-2	1.000	0-0	.000	2	3	5	5.7	4	0	1	0	0	8	7.3	
WASHINGTON	1/18/19		24	1-3	.333	1-2	.500	0-0	.000	2	3	5	5.6	1	1	1	0	1	3	6.7	
WASHINGTON ST.	1/20/19		24	0-6	.000	0-2	.000	0-0	.000	1	6	7	5.8	1	1	1	0	1	0	5.9	
at Colorado	1/25/19		18	3-5	.600	0-2	.000	2-2	1.000	3	3	6	5.8	2	1	0	0	1	8	6.1	
at Utah	1/27/19		33	3-5	.600	1-1	1.000	3-4	.750	1	1	2	5.4	2	1	0	0	0	10	6.5	
Totals			3	213	23-56	.411	10-26	.385	9-10	.900	23	31	54	5.4	20	7	11	4	11	65	6.5

2018-19 Individual Game-by-Game

#14 Brewer, Mikaela

Opponent	Date	qs	min	Total		3-Pointers		Free throws		Rebounds				pf	a	t/o	blk	stl	pts	avg	
				fg-fga	pct	3fg-fga	pct	ft-fta	pct	off	def	tot	avg								
UC DAVIS	11/7/18		2	0-1	.000	0-1	.000	0-0	.000	0	0	0	0.0	0	0	0	1	0	0	0.0	
IDAHO	11/11/18		5	1-2	.500	0-1	.000	0-0	.000	0	0	0	0.0	0	0	1	0	0	2	1.0	
SAN FRANCISCO	11/15/18		4	1-1	1.000	0-0	.000	2-2	1.000	0	1	1	0.3	1	0	0	0	0	4	2.0	
vs FGCU	11/23/18		dnp	-	-	-	-	-	-	-	-	-	-	-	-	-	-	-	-	-	
vs American	11/24/18		dnp	-	-	-	-	-	-	-	-	-	-	-	-	-	-	-	-	-	
at Hawaii	11/25/18		1	0-0	.000	0-0	.000	0-0	.000	0	0	0	0.3	0	0	0	0	0	0	1.5	
at Gonzaga	12/2/18		dnp	-	-	-	-	-	-	-	-	-	-	-	-	-	-	-	-	-	
at Tennessee	12/18/18		dnp	-	-	-	-	-	-	-	-	-	-	-	-	-	-	-	-	-	
at Buffalo	12/21/18		1	0-0	.000	0-0	.000	0-0	.000	0	0	0	0.2	1	0	0	0	0	0	1.2	
CSUN	12/29/18		8	1-3	.333	0-1	.000	0-0	.000	1	1	2	0.5	0	0	1	0	0	2	1.3	
at Arizona State	1/11/19		dnp	-	-	-	-	-	-	-	-	-	-	-	-	-	-	-	-	-	
at Arizona	1/13/19		6	0-1	.000	0-0	.000	1-2	.500	1	0	1	0.6	1	0	0	0	1	1	1.3	
WASHINGTON	1/18/19		6	2-5	.400	2-3	.667	0-0	.000	2	0	2	0.8	0	1	0	0	1	6	1.9	
WASHINGTON ST.	1/20/19		6	0-1	.000	0-0	.000	0-0	.000	0	0	0	0.7	0	0	0	1	0	0	1.7	
at Colorado	1/25/19		0	0-0	.000	0-0	.000	0-0	.000	0	0	0	0.6	0	0	0	0	0	0	1.5	
Totals			0	39	5-14	.357	2-6	.333	3-4	.750	4	2	6	0.6	3	1	2	2	2	15	1.5

#15 Dodson, Maya

Opponent	Date	qs	min	Total		3-Pointers		Free throws		Rebounds				pf	a	t/o	blk	stl	pts	avg	
				fg-fga	pct	3fg-fga	pct	ft-fta	pct	off	def	tot	avg								
UC DAVIS	11/7/18		25	5-8	.625	0-0	.000	0-2	.000	4	2	6	6.0	3	1	1	3	2	10	10.0	
IDAHO	11/11/18		19	5-8	.625	0-0	.000	0-0	.000	3	2	5	5.5	2	0	0	1	1	10	10.0	
SAN FRANCISCO	11/15/18		19	4-7	.571	0-0	.000	2-5	.400	0	3	3	4.7	2	6	0	4	0	10	10.0	
vs FGCU	11/23/18		22	3-5	.600	0-0	.000	0-2	.000	2	2	4	4.5	1	1	1	0	0	6	9.0	
vs American	11/24/18		18	2-4	.500	0-0	.000	0-0	.000	1	2	3	4.2	1	1	1	1	0	4	8.0	
at Hawaii	11/25/18		15	3-4	.750	0-0	.000	1-1	1.000	0	1	1	3.7	2	0	1	2	0	7	7.8	
at Gonzaga	12/2/18		20	3-6	.500	0-0	.000	2-5	.400	4	0	4	3.7	2	2	2	2	0	8	7.9	
BAYLOR	12/15/18		27	3-7	.429	0-0	.000	3-4	.750	2	3	5	3.9	3	1	0	1	1	9	8.0	
at Tennessee	12/18/18		32	5-7	.714	0-0	.000	0-0	.000	4	5	9	4.4	3	2	1	1	0	10	8.2	
at Buffalo	12/21/18		17	3-8	.375	0-0	.000	3-3	1.000	1	0	1	4.1	2	1	2	1	0	9	8.3	
CSUN	12/29/18		25	8-17	.471	0-0	.000	0-0	.000	3	2	5	4.2	1	1	1	3	1	16	9.0	
at Arizona State	1/11/19		dnp	-	-	-	-	-	-	-	-	-	-	-	-	-	-	-	-	-	
Totals			0	239	44-81	.543	0-0	.000	11-22	.500	24	22	46	4.2	22	16	10	19	5	99	9.0

#20 Moschkau, Estella

Opponent	Date	qs	min	Total		3-Pointers		Free throws		Rebounds				pf	a	t/o	blk	stl	pts	avg	
				fg-fga	pct	3fg-fga	pct	ft-fta	pct	off	def	tot	avg								
UC DAVIS	11/7/18		4	0-0	.000	0-0	.000	0-0	.000	0	0	0	0.0	0	0	0	0	0	0	0.0	
IDAHO	11/11/18		6	1-1	1.000	1-1	1.000	0-0	.000	0	0	0	0.0	0	1	1	0	0	3	1.5	
SAN FRANCISCO	11/15/18		5	2-2	1.000	1-1	1.000	0-0	.000	1	0	1	0.3	0	1	1	0	0	5	2.7	
vs FGCU	11/23/18		2	1-1	1.000	1-1	1.000	0-0	.000	0	0	0	0.3	0	0	1	0	0	3	2.8	
vs American	11/24/18		2	0-0	.000	0-0	.000	0-0	.000	0	0	0	0.2	0	0	0	0	0	0	2.2	
at Hawaii	11/25/18		6	0-0	.000	0-0	.000	0-0	.000	0	0	0	0.2	1	0	2	0	2	0	1.8	
at Gonzaga	12/2/18		dnp	-	-	-	-	-	-	-	-	-	-	-	-	-	-	-	-	-	
at Tennessee	12/18/18		dnp	-	-	-	-	-	-	-	-	-	-	-	-	-	-	-	-	-	
at Buffalo	12/21/18		0	0-0	.000	0-0	.000	0-0	.000	0	0	0	0.1	0	0	0	0	0	0	1.6	
CSUN	12/29/18		12	1-2	.500	1-2	.500	0-0	.000	0	2	2	0.4	2	0	1	0	0	3	1.8	
at Arizona State	1/11/19		dnp	-	-	-	-	-	-	-	-	-	-	-	-	-	-	-	-	-	
at Arizona	1/13/19		4	0-0	.000	0-0	.000	0-0	.000	0	2	2	0.6	2	1	0	0	0	0	1.6	
WASHINGTON	1/18/19		6	0-1	.000	0-1	.000	0-0	.000	0	0	0	0.5	0	0	0	0	0	0	1.4	
WASHINGTON ST.	1/20/19		3	0-0	.000	0-0	.000	0-0	.000	0	1	1	0.5	1	0	0	0	0	0	1.3	
at Colorado	1/25/19		0	0-0	.000	0-0	.000	0-0	.000	0	0	0	0.5	0	0	0	0	0	0	1.2	
Totals			0	50	5-7	.714	4-6	.667	0-0	.000	1	5	6	0.5	6	3	6	0	2	14	1.2

2018-19 Individual Game-by-Game

#21 Carrington, DiJonai

Opponent	Date	qs	min	Total		3-Pointers		Free throws		Rebounds				pf	a	t/o	blk	stl	pts	avg	
				fg-fga	pct	3fg-fga	pct	ft-fa	pct	off	def	tot	avg								
UC DAVIS	11/7/18	*	13	0-6	.000	0-2	.000	0-0	.000	0	2	2	2.0	2	1	1	0	2	0	0.0	
IDAHO	11/11/18	*	11	2-8	.250	1-4	.250	1-2	.500	3	1	4	3.0	0	1	0	0	0	6	3.0	
SAN FRANCISCO	11/15/18	*	18	4-7	.571	1-4	.250	0-0	.000	1	4	5	3.7	1	4	2	0	0	9	5.0	
vs FGCU	11/23/18	*	32	2-5	.400	0-0	.000	12-15	.800	0	9	9	5.0	1	3	2	0	1	16	7.8	
vs American	11/24/18	*	22	6-7	.857	0-0	.000	1-1	1.000	2	5	7	5.4	2	1	1	0	2	13	8.8	
at Hawaii	11/25/18	*	19	4-6	.667	2-2	1.000	2-3	.667	1	3	4	5.2	1	4	2	0	3	12	9.3	
at Gonzaga	12/2/18	*	27	5-13	.385	1-5	.200	2-5	.400	0	3	3	4.9	3	1	2	0	3	13	9.9	
BAYLOR	12/15/18	*	27	3-6	.500	1-1	1.000	3-7	.429	1	5	6	5.0	3	2	1	1	1	10	9.9	
at Tennessee	12/18/18	*	38	11-15	.733	4-5	.800	7-9	.778	0	13	13	5.9	1	2	5	0	1	33	12.4	
at Buffalo	12/21/18	*	35	1-7	.143	0-3	.000	2-2	1.000	1	9	10	6.3	3	0	5	1	2	4	11.6	
CSUN	12/29/18	*	26	2-6	.333	1-3	.333	0-0	.000	2	10	12	6.8	1	2	1	0	3	5	11.0	
USC	1/4/19	*	29	4-13	.308	0-4	.000	6-9	.667	2	5	7	6.8	2	0	2	0	1	14	11.3	
UCLA	1/6/19	*	39	11-18	.611	3-6	.500	5-6	.833	4	5	9	7.0	3	1	6	0	1	30	12.7	
at Arizona State	1/11/19	*	36	6-11	.545	3-5	.600	2-2	1.000	3	8	11	7.3	2	1	5	0	1	17	13.0	
at Arizona	1/13/19	*	30	6-16	.375	3-8	.375	4-4	1.000	0	8	8	7.3	0	1	2	0	0	19	13.4	
WASHINGTON	1/18/19	*	29	6-12	.500	0-2	.000	0-0	.000	4	7	11	7.6	1	5	1	0	1	12	13.3	
WASHINGTON ST.	1/20/19	*	24	4-8	.500	0-1	.000	3-3	1.000	1	3	4	7.4	3	3	2	1	1	11	13.2	
at Colorado	1/25/19	*	32	2-12	.167	0-2	.000	8-11	.727	2	11	13	7.7	1	0	2	0	1	12	13.1	
at Utah	1/27/19	*	33	6-15	.400	1-4	.250	0-1	.000	2	3	5	7.5	0	1	2	0	0	13	13.1	
Totals			19	520	85-191	.445	21-61	.344	58-80	.725	29	114	143	7.5	30	33	44	3	24	249	13.1

#23 Williams, Kiana

Opponent	Date	qs	min	Total		3-Pointers		Free throws		Rebounds				pf	a	t/o	blk	stl	pts	avg	
				fg-fga	pct	3fg-fga	pct	ft-fa	pct	off	def	tot	avg								
UC DAVIS	11/7/18	*	18	5-8	.625	3-5	.600	1-2	.500	0	1	1	1.0	0	3	2	0	0	14	14.0	
IDAHO	11/11/18	*	28	7-10	.700	4-7	.571	1-1	1.000	0	3	3	2.0	1	9	2	0	1	19	16.5	
SAN FRANCISCO	11/15/18	*	26	8-13	.615	4-6	.667	1-1	1.000	0	0	0	1.3	1	3	2	0	0	21	18.0	
vs FGCU	11/23/18	*	35	6-10	.600	5-8	.625	0-0	.000	0	6	6	2.5	0	2	4	0	1	17	17.8	
vs American	11/24/18	*	33	3-12	.250	2-6	.333	1-2	.500	0	0	0	2.0	2	7	3	0	0	9	16.0	
at Hawaii	11/25/18	*	35	4-9	.444	0-5	.000	1-2	.500	0	4	4	2.3	0	3	1	0	2	9	14.8	
at Gonzaga	12/2/18	*	40	7-17	.412	2-6	.333	2-2	1.000	0	1	1	2.1	2	3	4	0	1	18	15.3	
BAYLOR	12/15/18	*	40	5-16	.313	3-10	.300	0-0	.000	0	1	1	2.0	2	5	2	0	2	13	15.0	
at Tennessee	12/18/18	*	38	5-13	.385	3-7	.429	3-4	.750	0	5	5	2.3	3	7	6	0	2	16	15.1	
at Buffalo	12/21/18	*	40	2-9	.222	1-6	.167	2-4	.500	0	2	2	2.3	3	7	1	0	2	7	14.3	
CSUN	12/29/18	*	21	0-6	.000	0-4	.000	0-0	.000	0	2	2	2.3	0	1	1	0	0	0	13.0	
USC	1/4/19	*	40	8-18	.444	4-11	.364	2-3	.667	0	4	4	2.4	2	4	7	0	0	22	13.8	
UCLA	1/6/19	*	39	7-14	.500	3-9	.333	4-5	.800	0	2	2	2.4	0	10	2	0	3	21	14.3	
at Arizona State	1/11/19	*	39	3-8	.375	1-3	.333	3-3	1.000	0	4	4	2.5	1	4	4	0	1	10	14.0	
at Arizona	1/13/19	*	25	5-7	.714	3-3	1.000	0-0	.000	0	1	1	2.4	0	7	0	0	0	13	13.9	
WASHINGTON	1/18/19	*	26	9-17	.529	4-11	.364	0-0	.000	0	1	1	2.3	1	3	2	0	4	22	14.4	
WASHINGTON ST.	1/20/19	*	29	8-14	.571	3-6	.500	0-0	.000	0	0	0	2.2	2	3	3	0	1	19	14.7	
at Colorado	1/25/19	*	39	8-20	.400	2-9	.222	2-2	1.000	0	2	2	2.2	0	7	1	0	1	20	15.0	
at Utah	1/27/19	*	37	4-13	.308	1-8	.125	1-1	1.000	0	5	5	2.3	1	7	2	1	1	10	14.7	
Totals			19	628	104-234	.444	48-130	.369	24-32	.750	0	44	44	2.3	21	95	49	1	22	280	14.7

2018-19 Individual Game-by-Game

#24 Hull, Lacie

Opponent	Date	gs	min	Total		3-Pointers		Free throws		Rebounds				pf	a	t/o	blk	stl	pts	avg	
				fg-fga	pct	3fg-fga	pct	ft-fta	pct	off	def	tot	avg								
UC DAVIS	11/7/18		17	1-5	.200	0-3	.000	0-0	.000	0	3	3	3.0	0	0	1	0	2	2	2.0	
IDAHO	11/11/18		12	0-2	.000	0-0	.000	0-0	.000	2	0	2	2.5	3	2	0	1	0	0	1.0	
SAN FRANCISCO	11/15/18		13	2-5	.400	2-4	.500	0-0	.000	0	1	1	2.0	2	0	0	0	0	6	2.7	
vs FGCU	11/23/18		22	1-3	.333	1-2	.500	0-0	.000	1	3	4	2.5	3	4	0	0	2	3	2.8	
vs American	11/24/18		33	0-3	.000	0-1	.000	0-0	.000	0	3	3	2.6	1	0	2	0	7	0	2.2	
at Hawaii	11/25/18		28	3-4	.750	2-3	.667	0-0	.000	0	3	3	2.7	0	6	2	2	3	8	3.2	
at Gonzaga	12/2/18	*	37	2-3	.667	1-2	.500	4-4	1.000	1	0	1	2.4	2	3	1	0	3	9	4.0	
BAYLOR	12/15/18	*	22	1-6	.167	1-3	.333	0-0	.000	2	0	2	2.4	3	0	1	0	1	3	3.9	
at Tennessee	12/18/18	*	32	5-8	.625	4-5	.800	0-0	.000	1	2	3	2.4	3	1	0	1	0	14	5.0	
at Buffalo	12/21/18	*	24	0-1	.000	0-1	.000	0-0	.000	0	5	5	2.7	2	2	2	0	0	0	4.5	
CSUN	12/29/18	*	23	4-7	.571	2-5	.400	0-0	.000	2	2	4	2.8	1	2	1	0	3	10	5.0	
USC	1/4/19	*	36	3-7	.429	1-4	.250	0-0	.000	0	8	8	3.3	3	0	1	1	2	7	5.2	
UCLA	1/6/19	*	38	2-6	.333	1-4	.250	0-0	.000	0	2	2	3.2	0	6	0	0	2	5	5.2	
at Arizona State	1/11/19	*	30	3-5	.600	1-2	.500	1-1	1.000	0	1	1	3.0	1	2	0	0	2	8	5.4	
at Arizona	1/13/19	*	22	0-2	.000	0-2	.000	2-2	1.000	0	1	1	2.9	2	3	1	0	1	2	5.1	
WASHINGTON	1/18/19	*	19	2-10	.200	2-8	.250	0-0	.000	0	0	0	2.7	2	0	4	0	0	6	5.2	
WASHINGTON ST.	1/20/19	*	24	2-7	.286	2-4	.500	2-2	1.000	1	0	1	2.6	1	1	0	1	1	8	5.4	
at Colorado	1/25/19	*	25	1-2	.500	0-1	.000	1-1	1.000	0	0	0	2.4	3	5	0	0	2	3	5.2	
at Utah	1/27/19	*	33	2-5	.400	1-2	.500	2-4	.500	2	1	3	2.5	1	3	1	1	2	7	5.3	
Totals			13	490	34-91	.374	21-56	.375	12-14	.857	12	35	47	2.5	33	40	17	7	33	101	5.3

#54 Brown, Jenna

Opponent	Date	gs	min	Total		3-Pointers		Free throws		Rebounds				pf	a	t/o	blk	stl	pts	avg	
				fg-fga	pct	3fg-fga	pct	ft-fta	pct	off	def	tot	avg								
UC DAVIS	11/7/18		19	2-2	1.000	0-0	.000	0-2	.000	0	3	3	3.0	1	2	3	0	0	4	4.0	
IDAHO	11/11/18		13	3-6	.500	1-4	.250	0-0	.000	0	3	3	3.0	0	3	1	0	0	7	5.5	
SAN FRANCISCO	11/15/18		9	1-4	.250	0-1	.000	1-2	.500	0	2	2	2.7	1	0	0	0	0	3	4.7	
vs FGCU	11/23/18		4	0-2	.000	0-0	.000	0-0	.000	0	0	0	2.0	0	1	0	0	0	0	3.5	
vs American	11/24/18		12	1-4	.250	0-1	.000	2-3	.667	0	3	3	2.2	0	1	0	0	0	4	3.6	
at Hawaii	11/25/18		14	0-1	.000	0-1	.000	0-0	.000	0	0	0	1.8	2	0	0	0	0	0	3.0	
at Gonzaga	12/2/18		7	0-0	.000	0-0	.000	1-2	.500	0	0	0	1.6	1	1	1	0	0	1	2.7	
BAYLOR	12/15/18		8	0-0	.000	0-0	.000	0-0	.000	0	1	1	1.5	0	2	0	0	0	0	2.4	
at Tennessee	12/18/18		9	1-4	.250	0-1	.000	1-2	.500	0	1	1	1.4	0	2	0	0	0	3	2.4	
at Buffalo	12/21/18		6	0-1	.000	0-0	.000	0-0	.000	0	1	1	1.4	2	1	1	0	0	0	2.2	
CSUN	12/29/18		22	1-6	.167	0-0	.000	0-2	.000	2	5	7	1.9	0	3	2	0	0	2	2.2	
USC	1/4/19		7	1-2	.500	0-0	.000	0-0	.000	0	0	0	1.8	0	3	1	0	0	2	2.2	
UCLA	1/6/19		3	0-1	.000	0-0	.000	0-0	.000	0	0	0	1.6	0	0	1	0	1	0	2.0	
at Arizona State	1/11/19		3	0-0	.000	0-0	.000	0-0	.000	0	0	0	1.5	0	0	1	0	0	0	1.9	
at Arizona	1/13/19		20	3-5	.600	1-2	.500	2-2	1.000	0	1	1	1.5	1	0	4	0	0	9	2.3	
WASHINGTON	1/18/19		16	2-7	.286	0-1	.000	0-0	.000	1	0	1	1.4	1	0	1	0	1	4	2.4	
WASHINGTON ST.	1/20/19		14	1-2	.500	0-0	.000	2-2	1.000	0	1	1	1.4	0	1	2	1	0	4	2.5	
at Colorado	1/25/19		3	0-1	.000	0-1	.000	0-0	.000	0	1	1	1.4	0	0	0	0	0	0	2.4	
at Utah	1/27/19		2	0-0	.000	0-0	.000	0-0	.000	0	0	0	1.3	1	1	1	0	0	0	2.3	
Totals			0	191	16-48	.333	2-12	.167	9-17	.529	3	22	25	1.3	10	21	19	1	2	43	2.3

Stanford Women's Basketball Individual Career History

Brewer, Mikaela

Season	gp-gs	min/avg	Total		3-Point		F-Throws			Rebounds				Steals			Scoring			
			fg-fga	pct	fg-fga	pct	ft-fts	pct	off	def	tot	avg	pf	fo	ast	to	blk	stl	pts	avg
2016-17	10-0	60/6.0	7-23	.304	5-16	.313	0-0	.000	1	5	6	0.6	3	0	4	7	0	1	19	1.9
2017-18	17-0	31/1.8	2-14	.143	1-9	.111	0-0	.000	0	1	1	0.1	0	0	2	3	0	0	5	0.3
2018-19	10-0	39/3.9	5-14	.357	2-6	.333	3-4	.750	4	2	6	0.6	3	0	1	2	2	2	15	1.5
TOTAL	37-0	130/3.5	14-51	.275	8-31	.258	3-4	.750	5	8	13	0.4	6	0	7	12	2	3	39	1.1

SINGLE-GAME HIGHS [all-time ranking]:

Points: 6, Washington -- 1/18/19; Cal Poly -- 11/11/16
 Rebounds: 2, Washington -- 1/18/19; Cal Poly -- 11/11/16; CSUN -- 12/29/18
 Assists: 2, CSUN -- 11/20/16; vs Wichita St. -- 11/25/16
 Steals: 1, at Arizona -- 1/13/19; Washington -- 1/18/19; UC Davis -- 12/4/16
 Blocks: 1, Washington St. -- 1/20/19; UC Davis -- 11/7/18; UC Davis -- 11/07/18
 FG made: 2, Washington -- 1/18/19; Cal Poly -- 11/11/16; vs Wichita St. -- 11/25/16
 FG attempts: 6, CSUN -- 11/20/16; vs Wichita St. -- 11/25/16
 3FG made: 2, Washington -- 1/18/19; Cal Poly -- 11/11/16
 3FG attempts: 5, vs Wichita St. -- 11/25/16
 FT made: 2, San Francisco -- 11/15/18; San Francisco -- 11/15/18
 FT attempts: 2, at Arizona -- 1/13/19; San Francisco -- 11/15/18; San Francisco -- 11/15/18

Brown, Jenna

Season	gp-gs	min/avg	Total		3-Point		F-Throws			Rebounds				Steals			Scoring			
			fg-fga	pct	fg-fga	pct	ft-fts	pct	off	def	tot	avg	pf	fo	ast	to	blk	stl	pts	avg
2018-19	19-0	191/10.1	16-48	.333	2-12	.167	9-17	.529	3	22	25	1.3	10	0	21	19	1	2	43	2.3
TOTAL	19-0	191/10.1	16-48	.333	2-12	.167	9-17	.529	3	22	25	1.3	10	0	21	19	1	2	43	2.3

SINGLE-GAME HIGHS [all-time ranking]:

Points: 9, at Arizona -- 1/13/19
 Rebounds: 7, CSUN -- 12/29/18
 Assists: 3, 4 times
 Steals: 1, Washington -- 1/18/19; UCLA -- 1/6/19
 Blocks: 1, Washington St. -- 1/20/19
 FG made: 3, at Arizona -- 1/13/19; Idaho -- 11/11/18; Idaho -- 11/11/18
 FG attempts: 7, Washington -- 1/18/19
 3FG made: 1, at Arizona -- 1/13/19; Idaho -- 11/11/18; Idaho -- 11/11/18
 3FG attempts: 4, Idaho -- 11/11/18; Idaho -- 11/11/18
 FT made: 2, at Arizona -- 1/13/19; Washington St. -- 1/20/19; vs American -- 11/24/18
 FT attempts: 3, vs American -- 11/24/18

Carrington, DiJonai

Season	gp-gs	min/avg	Total		3-Point		F-Throws			Rebounds				Steals			Scoring			
			fg-fga	pct	fg-fga	pct	ft-fts	pct	off	def	tot	avg	pf	fo	ast	to	blk	stl	pts	avg
2016-17	35-0	274/7.8	35-79	.443	5-21	.238	11-19	.579	21	59	80	2.3	36	0	14	24	3	19	86	2.5
2017-18	32-7	721/22.5	107-267	.401	30-107	.280	39-57	.684	51	127	178	5.6	65	0	58	69	7	46	283	8.8
2018-19	19-19	520/27.4	85-191	.445	21-61	.344	58-80	.725	29	114	143	7.5	30	0	33	44	3	24	249	13.1
TOTAL	86-26	1515/17.6	227-537	.423	56-189	.296	108-156	.692	101	300	401	4.7	131	0	105	137	13	89	618	7.2

SINGLE-GAME HIGHS [all-time ranking]:

Points: 33, at Tennessee -- 12/18/18
 Rebounds: 22, UC Riverside -- 11/17/17; UC Riverside -- 11/17/17
 Assists: 5, 5 times
 Steals: 4, at USC -- 1/19/18
 Blocks: 1, 14 times
 FG made: 11, UCLA -- 1/6/19; at Tennessee -- 12/18/18
 FG attempts: 18, UCLA -- 1/6/19
 3FG made: 4, at Tennessee -- 12/18/18
 3FG attempts: 8, 5 times
 FT made: 12, vs FGCU -- 11/23/18
 FT attempts: 15, vs FGCU -- 11/23/18

Stanford Women's Basketball Individual Career History

Coffee, Shannon

Season	gp-gs	min/avg	Total		3-Point		F-Throws		Rebounds				Scoring							
			fg-fga	pct	fg-fga	pct	ft-fta	pct	off	def	tot	avg	pf	fo	ast	to	blk	stl	pts	avg
2015-16	12-0	45/3.8	9-21	.429	0-2	.000	3-13	.231	3	10	13	1.1	3	0	1	7	1	0	21	1.8
2016-17	20-0	86/4.3	17-27	.630	1-4	.250	9-17	.529	4	17	21	1.1	9	0	3	10	3	2	44	2.2
2017-18	27-2	112/4.1	12-38	.316	7-20	.350	1-2	.500	5	19	24	0.9	12	0	6	14	4	3	32	1.2
2018-19	19-0	157/8.3	11-28	.393	4-15	.267	3-4	.750	10	18	28	1.5	8	0	15	6	4	5	29	1.5
TOTAL	78-2	400/5.1	49-114	.430	12-41	.293	16-36	.444	22	64	86	1.1	32	0	25	37	12	10	126	1.6

SINGLE-GAME HIGHS [all-time ranking]:

Points: 14, at Baylor -- 12/3/17

Rebounds: 7, vs Wichita St. -- 11/25/16

Assists: 3, at Utah -- 1/27/19; UNLV -- 12/16/17

Steals: 2, at Arizona State -- 1/11/19

Blocks: 1, 13 times

FG made: 5, vs Wichita St. -- 11/25/16; at Baylor -- 12/3/17

FG attempts: 11, at Baylor -- 12/3/17

3FG made: 4, at Baylor -- 12/3/17

3FG attempts: 8, at Baylor -- 12/3/17

FT made: 3, vs Northeastern -- 11/24/16; vs Wichita St. -- 11/25/16

FT attempts: 10, CSU Bakersfield -- 12/22/15

Dodson, Maya

Season	gp-gs	min/avg	Total		3-Point		F-Throws		Rebounds				Scoring							
			fg-fga	pct	fg-fga	pct	ft-fta	pct	off	def	tot	avg	pf	fo	ast	to	blk	stl	pts	avg
2017-18	33-4	372/11.3	51-103	.495	0-0	.000	13-33	.394	32	35	67	2.0	38	1	5	26	27	2	115	3.5
2018-19	11-0	239/21.7	44-81	.543	0-0	.000	11-22	.500	24	22	46	4.2	22	0	16	10	19	5	99	9.0
TOTAL	44-4	611/13.9	95-184	.516	0-0	.000	24-55	.436	56	57	113	2.6	60	1	21	36	46	7	214	4.9

SINGLE-GAME HIGHS [all-time ranking]:

Points: 16, CSUN -- 12/29/18

Rebounds: 9, at Tennessee -- 12/18/18

Assists: 6, San Francisco -- 11/15/18; San Francisco -- 11/15/18

Steals: 2, UC Davis -- 11/7/18; UC Davis -- 11/07/18

Blocks: 4, San Francisco -- 11/15/18; Western Illinois -- 12/18/17; San Francisco -- 11/15/18

FG made: 8, CSUN -- 12/29/18

FG attempts: 17, CSUN -- 12/29/18

FT made: 3, Baylor -- 12/15/18; at Buffalo -- 12/21/18

FT attempts: 5, San Francisco -- 11/15/18; at Gonzaga -- 12/2/18; San Francisco -- 11/15/18

Fingall, Nadia

Season	gp-gs	min/avg	Total		3-Point		F-Throws		Rebounds				Scoring							
			fg-fga	pct	fg-fga	pct	ft-fta	pct	off	def	tot	avg	pf	fo	ast	to	blk	stl	pts	avg
2016-17	36-8	419/11.6	67-132	.508	2-13	.154	19-37	.514	42	51	93	2.6	52	0	22	30	13	13	155	4.3
2017-18	34-0	398/11.7	41-92	.446	13-31	.419	18-26	.692	32	75	107	3.1	52	1	19	22	13	16	113	3.3
2018-19	12-12	244/20.3	40-80	.500	5-17	.294	11-21	.524	28	31	59	4.9	23	0	20	16	5	5	96	8.0
TOTAL	82-20	1061/12.9	148-304	.487	20-61	.328	48-84	.571	102	157	259	3.2	127	1	61	68	31	34	364	4.4

SINGLE-GAME HIGHS [all-time ranking]:

Points: 24, vs FGCU -- 11/23/18

Rebounds: 8, 5 times

Assists: 5, vs FGCU -- 11/23/18

Steals: 3, Utah -- 2/12/17

Blocks: 2, 6 times

FG made: 11, vs FGCU -- 11/23/18

FG attempts: 14, vs FGCU -- 11/23/18

3FG made: 2, 4 times

3FG attempts: 4, vs American -- 11/24/18; at Baylor -- 12/3/17

FT made: 4, at Arizona -- 1/1/17

FT attempts: 5, Idaho -- 11/11/18; at George Washington -- 12/21/16; Idaho -- 11/11/18

Stanford Women's Basketball Individual Career History

Hull, Lacie

Season	gp-gs	min/avg	Total		3-Point		F-Throws		Rebounds				Scoring							
			fg-fga	pct	fg-fga	pct	ft-fta	pct	off	def	tot	avg	pf	fo	ast	to	blk	stl	pts	avg
2018-19	19-13	490/25.8	34-91	.374	21-56	.375	12-14	.857	12	35	47	2.5	33	0	40	17	7	33	101	5.3
TOTAL	19-13	490/25.8	34-91	.374	21-56	.375	12-14	.857	12	35	47	2.5	33	0	40	17	7	33	101	5.3

SINGLE-GAME HIGHS [all-time ranking]:

Points: 14, at Tennessee -- 12/18/18

Rebounds: 8, USC -- 1/4/19

Assists: 6, UCLA -- 1/6/19; at Hawaii -- 11/25/18

Steals: 7, vs American -- 11/24/18

Blocks: 2, at Hawaii -- 11/25/18

FG made: 5, at Tennessee -- 12/18/18

FG attempts: 10, Washington -- 1/18/19

3FG made: 4, at Tennessee -- 12/18/18

3FG attempts: 8, Washington -- 1/18/19

FT made: 4, at Gonzaga -- 12/2/18

FT attempts: 4, at Utah -- 1/27/19; at Gonzaga -- 12/2/18

Hull, Lexie

Season	gp-gs	min/avg	Total		3-Point		F-Throws		Rebounds				Scoring							
			fg-fga	pct	fg-fga	pct	ft-fta	pct	off	def	tot	avg	pf	fo	ast	to	blk	stl	pts	avg
2018-19	10-3	213/21.3	23-56	.411	10-26	.385	9-10	.900	23	31	54	5.4	20	0	7	11	4	11	65	6.5
TOTAL	10-3	213/21.3	23-56	.411	10-26	.385	9-10	.900	23	31	54	5.4	20	0	7	11	4	11	65	6.5

SINGLE-GAME HIGHS [all-time ranking]:

Points: 17, Idaho -- 11/11/18; Idaho -- 11/11/18

Rebounds: 11, UC Davis -- 11/7/18; UC Davis -- 11/07/18

Assists: 3, San Francisco -- 11/15/18; San Francisco -- 11/15/18

Steals: 4, UC Davis -- 11/7/18; UC Davis -- 11/07/18

Blocks: 2, Idaho -- 11/11/18; Idaho -- 11/11/18

FG made: 6, Idaho -- 11/11/18; Idaho -- 11/11/18

FG attempts: 12, Idaho -- 11/11/18; Idaho -- 11/11/18

3FG made: 5, Idaho -- 11/11/18; Idaho -- 11/11/18

3FG attempts: 10, Idaho -- 11/11/18; Idaho -- 11/11/18

FT made: 3, at Utah -- 1/27/19

FT attempts: 4, at Utah -- 1/27/19

Jerome, Alyssa

Season	gp-gs	min/avg	Total		3-Point		F-Throws		Rebounds				Scoring							
			fg-fga	pct	fg-fga	pct	ft-fta	pct	off	def	tot	avg	pf	fo	ast	to	blk	stl	pts	avg
2017-18	34-1	337/9.9	28-70	.400	9-31	.290	4-6	.667	11	25	36	1.1	27	0	14	22	3	1	69	2.0
2018-19	19-7	296/15.6	24-62	.387	7-20	.350	12-16	.750	15	45	60	3.2	29	0	12	13	7	2	67	3.5
TOTAL	53-8	633/11.9	52-132	.394	16-51	.314	16-22	.727	26	70	96	1.8	56	0	26	35	10	3	136	2.6

SINGLE-GAME HIGHS [all-time ranking]:

Points: 9, at Utah -- 1/27/19

Rebounds: 8, UC Davis -- 11/07/18; UC Davis -- 11/7/18

Assists: 2, 7 times

Steals: 1, at USC -- 1/19/18; at Hawaii -- 11/25/18; at Buffalo -- 12/21/18

Blocks: 2, San Francisco -- 11/15/18; San Francisco -- 11/15/18; UNLV -- 12/16/17

FG made: 4, at Utah -- 1/27/19

FG attempts: 8, at Utah -- 1/27/19

3FG made: 2, 4 times

3FG attempts: 4, vs Kent State -- 11/23/17; vs Kent State -- 11/23/17

FT made: 4, at Hawaii -- 11/25/18

FT attempts: 6, at Hawaii -- 11/25/18

Stanford Women's Basketball Individual Career History

Moschkau, Estella

Season	gp-gs	min/avg	Total		3-Point		F-Throws		Rebounds				pf	fo	ast	to	blk	stl	Scoring	
			fg-fga	pct	fg-fga	pct	ft-fla	pct	off	def	tot	avg							pts	avg
2017-18	23-0	49/2.1	4-9	.444	3-7	.429	1-2	.500	2	2	4	0.2	4	0	2	0	0	0	12	0.5
2018-19	12-0	50/4.2	5-7	.714	4-6	.667	0-0	.000	1	5	6	0.5	6	0	3	6	0	2	14	1.2
TOTAL	35-0	99/2.8	9-16	.563	7-13	.538	1-2	.500	3	7	10	0.3	10	0	5	6	0	2	26	0.7

SINGLE-GAME HIGHS [all-time ranking]:

Points: 5, San Francisco -- 11/15/18; San Francisco -- 11/15/18
 Rebounds: 2, at Arizona -- 1/13/19; at Arizona -- 1/5/18; CSUN -- 12/29/18
 Assists: 1, 7 times
 Steals: 2, at Hawaii -- 11/25/18
 FG made: 2, San Francisco -- 11/15/18; San Francisco -- 11/15/18
 FG attempts: 2, 6 times
 3FG made: 1, 10 times
 3FG attempts: 2, CSU Bakersfield -- 11/19/17; CSU Bakersfield -- 11/19/17; CSUN -- 12/29/18
 FT made: 1, Arizona -- 1/28/18
 FT attempts: 2, Arizona -- 1/28/18

Smith, Alanna

Season	gp-gs	min/avg	Total		3-Point		F-Throws		Rebounds				pf	fo	ast	to	blk	stl	Scoring	
			fg-fga	pct	fg-fga	pct	ft-fla	pct	off	def	tot	avg							pts	avg
2015-16	34-0	400/11.8	67-155	.432	20-60	.333	29-44	.659	28	52	80	2.4	63	1	13	43	24	5	183	5.4
2016-17	38-3	735/19.3	133-286	.465	19-60	.317	62-90	.689	66	141	207	5.4	88	4	34	42	61	25	347	9.1
2017-18	35-35	995/28.4	198-418	.474	35-116	.302	43-81	.531	92	154	246	7.0	96	2	41	88	62	45	474	13.5
2018-19	19-19	528/27.8	148-269	.550	52-108	.481	54-72	.750	37	120	157	8.3	52	3	44	48	49	18	402	21.2
TOTAL	126-57	2658/21.1	546-1128	.484	126-344	.366	188-287	.655	223	467	690	5.5	299	10	132	221	196	93	1406	11.2

SINGLE-GAME HIGHS [all-time ranking]:

Points: 34, Washington St. -- 1/20/19
 Rebounds: 16, vs Ohio State -- 11/25/17
 Assists: 5, at Buffalo -- 12/21/18
 Steals: 6, at California -- 2/17/18
 Blocks: 7, at Arizona -- 1/13/19
 FG made: 14, vs Ohio State -- 11/25/17
 FG attempts: 24, Western Illinois -- 12/18/17; at California -- 2/17/18
 3FG made: 6, vs Dayton -- 11/28/15
 3FG attempts: 11, at California -- 2/17/18
 FT made: 7, UC Davis -- 11/07/18; UC Davis -- 11/7/18
 FT attempts: 8, Baylor -- 12/15/18; Cornell -- 12/19/15; at California -- 2/16/17

Sniezek, Marta

Season	gp-gs	min/avg	Total		3-Point		F-Throws		Rebounds				pf	fo	ast	to	blk	stl	Scoring	
			fg-fga	pct	fg-fga	pct	ft-fla	pct	off	def	tot	avg							pts	avg
2015-16	35-9	656/18.7	35-99	.354	4-17	.235	28-42	.667	8	48	56	1.6	27	0	109	63	1	21	102	2.9
2016-17	38-9	948/24.9	56-149	.376	6-20	.300	54-75	.720	6	100	106	2.8	64	0	169	93	3	51	172	4.5
2017-18	35-32	971/27.7	56-156	.359	20-59	.339	61-90	.678	7	115	122	3.5	68	1	150	78	3	38	193	5.5
TOTAL	108-50	2575/23.8	147-404	.364	30-96	.313	143-207	.691	21	263	284	2.6	159	1	428	234	7	110	467	4.3

SINGLE-GAME HIGHS [all-time ranking]:

Points: 13, Arizona State -- 1/26/18; at Washington -- 2/23/18
 Rebounds: 10, USC -- 12/31/17
 Assists: 13, vs Washington -- 3/4/16
 Steals: 6, Oregon State -- 1/8/17
 Blocks: 1, 7 times
 FG made: 5, Arizona State -- 1/26/18; vs Notre Dame -- 3/25/16
 FG attempts: 12, vs Belmont -- 11/24/17
 3FG made: 3, at Arizona State -- 1/7/18; Utah -- 2/9/18
 3FG attempts: 8, vs Belmont -- 11/24/17
 FT made: 6, UC Riverside -- 11/17/17; UC Riverside -- 11/17/17; vs USC -- 3/2/18
 FT attempts: 9, Tennessee -- 12/16/15

Stanford Women's Basketball Individual Career History

Williams, Kiana

Season	gp-gs	min/avg	Total		3-Point		F-Throws		Rebounds				Scoring							
			fg-fga	pct	fg-fga	pct	ft-fta	pct	off	def	tot	avg	pf	fo	ast	to	blk	stl	pts	avg
2017-18	35-26	899/25.7	128-309	.414	71-185	.384	36-44	.818	4	54	58	1.7	38	0	67	40	5	30	363	10.4
2018-19	19-19	628/33.1	104-234	.444	48-130	.369	24-32	.750	0	44	44	2.3	21	0	95	49	1	22	280	14.7
TOTAL	54-45	1527/28.3	232-543	.427	119-315	.378	60-76	.789	4	98	102	1.9	59	0	162	89	6	52	643	11.9

SINGLE-GAME HIGHS [all-time ranking]:

Points: 26, California -- 2/15/18

Rebounds: 6, vs FGCU -- 11/23/18; Utah -- 2/9/18

Assists: 10, UCLA -- 1/6/19

Steals: 4, Washington -- 1/18/19; California -- 2/15/18

Blocks: 1, 7 times

FG made: 9, Washington -- 1/18/19; vs Arizona State -- 3/3/18

FG attempts: 20, at Colorado -- 1/25/19

3FG made: 6, vs Arizona State -- 3/3/18

3FG attempts: 11, 5 times

FT made: 7, California -- 2/15/18

FT attempts: 9, California -- 2/15/18

Wilson, Anna

Season	gp-gs	min/avg	Total		3-Point		F-Throws		Rebounds				Scoring							
			fg-fga	pct	fg-fga	pct	ft-fta	pct	off	def	tot	avg	pf	fo	ast	to	blk	stl	pts	avg
2016-17	6-0	48/8.0	6-13	.462	4-8	.500	1-3	.333	0	6	6	1.0	4	0	5	7	0	3	17	2.8
2017-18	21-2	224/10.7	24-81	.296	20-69	.290	2-4	.500	1	22	23	1.1	22	0	8	13	1	10	70	3.3
2018-19	15-3	163/10.9	18-42	.429	7-28	.250	7-8	.875	6	17	23	1.5	13	0	14	9	0	14	50	3.3
TOTAL	42-5	435/10.4	48-136	.353	31-105	.295	10-15	.667	7	45	52	1.2	39	0	27	29	1	27	137	3.3

SINGLE-GAME HIGHS [all-time ranking]:

Points: 21, vs Ohio State -- 11/25/17

Rebounds: 6, Western Illinois -- 12/18/17

Assists: 5, Washington -- 1/18/19

Steals: 3, Washington -- 1/18/19; Western Illinois -- 12/18/17

Blocks: 1, CSU Bakersfield -- 11/19/17; CSU Bakersfield -- 11/19/17

FG made: 7, vs Ohio State -- 11/25/17

FG attempts: 17, Western Illinois -- 12/18/17

3FG made: 7, vs Ohio State -- 11/25/17

3FG attempts: 15, Western Illinois -- 12/18/17

FT made: 2, 5 times

FT attempts: 3, at Arizona -- 1/1/17

Official Basketball Box Score -- Game Totals -- Final Statistics
UC Davis vs Stanford
11/7/18 7:00 PM at Stanford, Calif. (Maples Pavilion)

UC Davis 43 • 0-1

#	Player	Total			Rebounds			PF	TP	A	TO	Blk	Stl	Min	
		FG-FGA	3P-FGA	FT-FTA	Off	Def	Tot								
05	Nina Bessolo	r	3-11	2-8	3-5	0	4	4	2	11	0	2	1	2	19
22	Morgan Bertsch	r	5-15	2-2	4-8	2	3	5	3	16	1	6	2	2	33
32	Jerry Hall	r	1-7	0-4	0-0	3	1	4	1	2	0	2	0	1	27
02	Kourtney Eaton	g	1-9	1-5	0-0	1	0	1	3	2	4	0	1	3	15
03	Karley Eaton	g	0-3	0-2	0-0	0	2	3	0	2	1	0	3	15	
10	Cierra McKeown	g	2-8	2-5	0-0	0	0	0	6	1	0	0	0	3	19
11	Sage Stobbart	g	1-5	0-0	0-0	0	3	3	2	2	0	1	0	0	17
13	Katie Toole	g	0-2	0-0	0-0	0	0	0	0	0	0	0	0	0	10
15	Kaitlyn Hsu	g	0-0	0-0	0-0	0	0	0	0	0	0	1	0	0	3
20	Makaila Sanders	g	1-1	1-1	0-0	0	0	0	0	3	0	0	0	0	3
21	Sophia Song	g	0-1	0-1	0-0	0	1	1	0	0	1	0	0	0	9
23	Kayla Konrad	g	0-0	0-0	0-0	0	4	4	0	0	0	0	0	1	10
Team						0	1	1							
Totals			14-62	8-31	7-13	6	19	25	17	43	6	18	3	13	200

Stanford 71 • 1-0

#	Player	Total			Rebounds			PF	TP	A	TO	Blk	Stl	Min	
		FG-FGA	3P-FGA	FT-FTA	Off	Def	Tot								
04	Fingall, Nadia	r	0-1	0-0	2-2	1	3	4	3	2	0	3	0	0	16
11	Smith, Alanna	r	4-7	1-2	7-7	1	1	2	4	16	1	4	1	1	15
12	Hull, Lexie	r	5-10	1-4	0-0	3	8	11	3	11	0	2	1	4	27
21	Carrington, DJonai	g	0-6	0-2	0-0	0	2	2	2	0	1	1	0	2	13
23	Williams, Kiana	g	5-8	3-5	1-2	0	1	1	0	14	3	2	0	0	18
02	Coffee, Shannon	g	0-1	0-0	0-0	1	0	1	0	1	1	0	0	0	6
03	Wilson, Anna	g	0-4	0-4	0-0	0	5	5	1	0	1	1	0	0	13
10	Jerome, Alyssa	g	2-5	0-1	2-2	2	6	8	4	0	1	0	0	0	16
14	Brewer, Mikaela	g	0-1	0-1	0-0	0	0	0	0	0	0	1	0	0	2
15	Dodson, Maya	g	5-8	0-0	2-4	2	6	3	10	1	1	3	2	2	25
20	Moschkau, Estella	g	0-0	0-0	0-0	0	0	0	0	0	0	0	0	0	4
22	Romano, Alexa	g	2-3	1-2	1-1	0	2	2	0	6	0	1	0	0	9
24	Hull, Lacie	g	1-5	0-3	0-0	0	3	3	0	2	0	1	0	2	17
54	Brown, Jenna	g	2-2	0-0	0-2	0	3	3	1	4	2	3	0	0	19
Team						0	2	2							
Totals			26-61	6-24	13-18	12	38	50	18	71	10	21	6	12	200

Officials: Richard Waters, Teresa Turner, Melissa Barlow
 Technical fouls: UC Davis-None, Stanford-None.
 Attendance: 2471

Score by periods	1st	2nd	3rd	4th	Total
UC Davis	14	10	10	9	43
Stanford	17	19	21	14	71

Score tied - 1 time.
 Lead changed - 1 time.

Official Basketball Box Score -- Game Totals -- Final Statistics
Idaho vs Stanford
11/11/18 2:00 PM at Stanford, Calif. (Maples Pavilion)

Idaho 71 • 1-1

#	Player	Total			Rebounds			PF	TP	A	TO	Blk	Stl	Min	
		FG-FGA	3P-FGA	FT-FTA	Off	Def	Tot								
42	Klinker, Natalie	r	0-0	0-0	0-2	1	1	2	3	0	0	0	0	0	13
14	Pierce, Taylor	g	2-8	1-3	0-0	0	0	0	0	5	1	0	0	0	26
20	Kirby, Allison	g	1-3	0-0	0-0	0	1	1	2	2	1	3	0	0	25
21	Ferez, Mikayla	g	1-7	1-3	0-0	0	4	4	1	3	4	3	0	1	26
23	Marxen, Gina	g	7-11	5-6	3-4	0	3	3	0	22	4	7	0	0	34
03	Carlston, Nina	g	1-3	1-1	1-4	0	3	3	4	4	0	1	0	0	10
04	Christopher, Hailey	g	3-5	0-0	0-0	0	2	2	3	6	3	0	1	0	19
11	Hadden, Isabelle	g	3-7	0-0	2-3	0	0	0	4	8	0	0	1	1	11
22	King, Janie	g	6-13	6-10	0-0	1	3	4	3	18	0	0	0	2	28
32	Milne, Chayse	g	1-2	1-1	0-0	0	0	0	0	3	1	0	0	0	8
Team						0	1	1							
Totals			25-59	15-24	6-13	2	18	20	20	71	14	16	2	4	200

1st - FG %: 7-12 58.3% 2nd: 5-16 31.3% 3rd: 8-18 44.4% 4th: 5-13 38.5% Game: 25-59 42.4% Deadball Rebounds 7,1
 3FG %: 4-7 57.1% 4-6 66.7% 5-7 71.4% 2-4 50.0% 15-24 62.5%
 FT %: 1-1 100.0% 0-0 0.0% 2-2 100.0% 3-10 30.0% 6-13 46.2%

Stanford 115 • 2-0

#	Player	Total			Rebounds			PF	TP	A	TO	Blk	Stl	Min	
		FG-FGA	3P-FGA	FT-FTA	Off	Def	Tot								
04	Fingall, Nadia	r	7-9	0-0	2-5	3	5	8	1	16	2	1	2	0	20
11	Smith, Alanna	r	8-12	2-5	1-1	4	5	9	0	19	4	3	1	2	24
12	Hull, Lexie	r	6-12	5-10	0-0	2	3	5	3	17	0	0	2	2	25
21	Carrington, DJonai	g	2-8	1-4	1-2	3	1	4	0	6	1	0	0	0	11
23	Williams, Kiana	g	7-10	4-7	1-1	0	3	3	1	19	2	0	1	2	28
02	Coffee, Shannon	g	1-1	0-0	0-0	0	1	1	1	2	0	0	0	0	6
03	Wilson, Anna	g	3-8	2-6	2-2	1	0	1	2	10	1	0	0	2	11
10	Jerome, Alyssa	g	1-2	0-1	2-2	0	6	6	4	2	1	0	0	0	13
14	Brewer, Mikaela	g	1-2	0-1	0-0	0	0	0	0	2	0	1	0	0	5
15	Dodson, Maya	g	5-8	0-0	0-0	3	2	5	2	10	0	0	1	1	19
20	Moschkau, Estella	g	1-1	1-1	0-0	0	0	0	0	3	1	1	0	0	6
22	Romano, Alexa	g	0-3	0-2	0-0	0	0	0	0	2	0	1	0	0	7
24	Hull, Lacie	g	0-2	0-0	0-0	0	2	2	3	0	2	0	1	0	12
54	Brown, Jenna	g	3-6	1-4	0-0	0	3	3	0	7	3	1	0	0	13
Team						2	0	2							
Totals			45-84	16-41	9-13	20	29	49	19	115	26	10	7	8	200

Officials: Rochelle Bennett, Benny Luna, Robert Scofield
 Technical fouls: Idaho-None, Stanford-None.
 Attendance: 2582

Score by periods	1st	2nd	3rd	4th	Total
Idaho	19	14	23	15	71
Stanford	28	28	40	19	115

Score tied - 0 times.
 Lead changed - 0 times.

Official Basketball Box Score -- Game Totals -- Final Statistics
San Francisco vs Stanford
11/15/18 7:00 PM at Stanford, Calif. (Maples Pavilion)

San Francisco 62 • 1-1

#	Player	Total			Rebounds			PF	TP	A	TO	Blk	Stl	Min	
		FG-FGA	3P-FGA	FT-FTA	Off	Def	Tot								
12	Lundqvist, Moa	r	0-3	0-2	0-0	2	1	3	0	1	1	0	1	16	
24	Kostic, Lucija	r	0-5	0-0	2-2	2	4	4	2	1	2	0	1	23	
13	Alexander, Nia	g	1-6	0-0	0-0	1	1	2	0	2	0	0	0	20	
23	Preciado, Veronica	g	4-7	1-2	2-4	0	3	2	11	0	1	0	1	20	
33	Powell, Shannon	g	4-10	1-4	1-2	2	5	7	1	10	3	3	0	27	
02	Vaalavirta, Kia	g	1-7	0-3	4-6	0	3	3	1	6	3	0	0	0	28
03	Galic, Marta	g	2-2	0-0	0-0	0	2	2	1	4	1	2	0	1	15
32	Nielacna, Julia	g	5-16	2-4	3-3	2	4	6	2	15	1	3	0	0	25
55	Rathbun, Abby	g	3-4	1-1	5-6	2	0	2	4	12	0	0	0	0	26
Team						4	5	9							
Totals			20-60	5-16	17-23	13	26	39	18	62	8	14	0	4	200

1st - FG %: 3-13 23.1% 2nd: 7-17 41.2% 3rd: 4-16 25.0% 4th: 6-14 42.9% Game: 20-60 33.3% Deadball Rebounds 7,2
 3FG %: 1-5 20.0% 3-6 50.0% 4-4 100.0% 0-1 0.0% 5-16 31.3%
 FT %: 5-6 83.3% 4-7 57.1% 4-4 100.0% 4-6 66.7% 17-23 73.9%

Stanford 96 • 3-0

#	Player	Total			Rebounds			PF	TP	A	TO	Blk	Stl	Min	
		FG-FGA	3P-FGA	FT-FTA	Off	Def	Tot								
04	Fingall, Nadia	r	3-6	1-3	0-0	2	1	3	3	7	2	1	0	0	13
11	Smith, Alanna	r	6-12	5-8	1-2	0	7	7	1	18	3	1	4	1	26
12	Hull, Lexie	r	1-5	0-1	2-2	4	1	5	2	4	3	2	0	2	25
21	Carrington, DJonai	g	4-7	1-4	0-0	1	4	5	1	9	4	2	0	0	18
23	Williams, Kiana	g	8-13	4-6	1-1	0	0	0	1	21	3	2	0	0	26
02	Coffee, Shannon	g	0-1	0-1	0-0	0	0	0	0	0	2	0	1	0	8
03	Wilson, Anna	g	1-3	0-1	0-0	0	0	0	2	2	0	0	0	1	13
10	Jerome, Alyssa	g	3-4	1-2	0-1	0	2	2	7	0	0	2	0	0	16
14	Brewer, Mikaela	g	1-1	0-0	2-2	0	1	1	4	0	0	0	0	0	4
15	Dodson, Maya	g	4-7	0-0	2-5	0	3	3	2	10	6	0	4	0	19
20	Moschkau, Estella	g	2-2	1-1	0-0	1	0	1	0	5	1	1	0	0	5
22	Romano, Alexa	g	0-0	0-0	0-0	0	0	0	1	0	0	0	0	0	5
24	Hull, Lacie	g	2-5	2-4	0-0	0	1	1	2	6	0	0	0	0	13
54	Brown, Jenna	g	1-4	0-1	1-2	0	2	2	1	3	0	0	0	0	9
Team						1	3	4							

Official Basketball Box Score -- Game Totals -- Final Statistics
American vs Stanford
11/24/18 12:00 PM at Honolulu, O'ahu (Stan Sheriff Center)

American 49 • 3-2

#	Player	Total			3-Ptr			Rebounds			PF	TP	A	TO	Blk	Stl	Min
		FG-FGA	FG-FGA	FT-FTA	FG-FGA	FG-FGA	FT-FTA	Off	Def	Tot							
44	Carl, Cecily	f	3-6	0-0	2-2	0	7	7	5	8	1	2	0	0	23		
03	Lewis, Kaitlyn	g	5-12	1-3	1-1	1	2	3	1	12	3	4	0	0	36		
12	Sanders, Indeya	g	1-4	1-4	0-0	0	2	2	0	3	2	2	0	1	26		
22	Marenyl, Katie	g	3-7	0-1	5-8	1	2	3	2	11	2	1	0	1	32		
23	Koskimies, Elna	g	4-8	1-1	4-4	1	2	3	2	13	1	1	0	0	33		
02	Bartner, Morgan	g	0-3	0-2	0-0	1	0	1	1	0	0	3	0	1	21		
04	Fisher, Emily	g	0-0	0-0	0-0	0	1	1	2	0	0	2	0	0	8		
10	Edwards, Jade	g	0-0	0-0	0-0	0	2	2	4	0	1	1	1	0	8		
11	Cleveland, TaeKenya	g	1-4	0-1	0-0	0	1	1	1	2	0	0	0	0	8		
14	Brown, Taylor	g	0-2	0-0	0-0	0	0	0	1	0	0	0	0	0	3		
21	Doring, Maddie	g	0-0	0-0	0-0	0	0	0	0	0	0	0	0	0	1		
24	Graytok, Laura	g	0-0	0-0	0-0	0	0	0	0	0	0	0	0	0	1		
Team						0	2	2									
Totals			17-46	3-12	12-15	4	21	25	19	49	10	16	1	3	200		

1st FG %:	3-12	25.0%	2nd:	6-14	42.9%	3rd:	5-8	62.5%	4th:	3-12	25.0%	Game:	17-46	37.0%	Deadball	
3FG %:	0-3	0.0%	1-3	33.3%	1-2	50.0%	1-4	25.0%	3-12	25.0%	12-15	80.0%	Rebounds			
FT %:	4-6	66.7%	0-0	0.0%	5-6	83.3%	3-3	100.0%								

Stanford 71 • 5-0

#	Player	Total			3-Ptr			Rebounds			PF	TP	A	TO	Blk	Stl	Min
		FG-FGA	FG-FGA	FT-FTA	FG-FGA	FG-FGA	FT-FTA	Off	Def	Tot							
04	Fingall, Nadia	f	3-8	1-4	3-4	4	1	5	3	10	2	1	0	1	24		
11	Smith, Alanna	f	10-18	3-6	2-3	1	7	8	1	25	4	3	1	2	31		
03	Wilson, Anna	g	0-0	0-0	0-0	1	0	1	3	0	2	0	0	0	5		
21	Carrington, Dijonai	g	6-7	0-0	1-1	2	5	7	2	13	1	1	0	2	22		
23	Williams, Kiana	g	3-12	2-6	1-2	0	0	0	2	9	7	3	0	0	33		
02	Coffee, Shannon	g	1-3	1-2	0-0	0	1	1	0	3	0	0	0	0	4		
10	Jerome, Alyssa	g	0-2	0-1	3-4	2	1	3	2	3	2	1	0	0	12		
15	Dodson, Maya	g	2-4	0-0	0-0	1	2	3	1	4	1	1	0	0	18		
20	Moschkau, Estella	g	0-0	0-0	0-0	0	0	0	0	0	0	0	0	0	2		
22	Romano, Alexa	g	0-1	0-1	0-0	0	0	0	1	0	0	0	0	0	4		
24	Hull, Lacie	g	0-3	0-1	0-0	0	3	3	1	0	0	2	0	7	33		
54	Brown, Jenna	g	1-4	0-1	2-3	0	3	3	0	4	1	0	0	0	12		
Team						4	2	6									
Totals			26-62	7-22	12-17	15	25	40	16	71	18	12	2	12	200		

1st FG %:	6-18	33.3%	2nd:	4-13	30.8%	3rd:	7-16	43.8%	4th:	9-15	60.0%	Game:	26-62	41.9%	Deadball	
3FG %:	3-8	37.5%	1-4	25.0%	0-5	0.0%	3-5	60.0%	7-22	31.8%	12-17	70.6%	Rebounds			
FT %:	2-3	66.7%	4-6	66.7%	1-2	50.0%	5-6	83.3%								

Officials: Matt Shute, Sean Martin, Tim Tamashiro
 Technical fouls: American-None. Stanford-None.
 Attendance: 1268

Score by periods	1st	2nd	3rd	4th	Total
American	10	13	16	10	49
Stanford	17	13	15	26	71

Last FG - AU 4th-01:17, STAN 4th-00:48.
 Largest lead - AU None, STAN by 22 4th-02:38.
 AU led for 00:00. STAN led for 38:13. Game was tied for 01:47.

Official Basketball Box Score -- Game Totals -- Final Statistics
Stanford vs Hawaii
11/25/18 2:30 PM at Honolulu, O'ahu (Stan Sheriff Center)

Stanford 81 • 6-0

#	Player	Total			3-Ptr			Rebounds			PF	TP	A	TO	Blk	Stl	Min
		FG-FGA	FG-FGA	FT-FTA	FG-FGA	FG-FGA	FT-FTA	Off	Def	Tot							
04	Fingall, Nadia	f	3-7	1-1	0-0	2	4	6	1	7	1	2	0	1	24		
11	Smith, Alanna	f	12-15	3-6	3-3	2	2	4	2	30	3	3	1	0	25		
03	Wilson, Anna	g	0-2	0-2	2-2	0	4	4	1	2	0	0	0	1	15		
21	Carrington, Dijonai	g	4-6	2-2	2-3	1	3	4	1	12	4	2	0	3	19		
23	Williams, Kiana	g	4-9	0-5	1-2	0	4	4	0	9	3	1	0	2	35		
02	Coffee, Shannon	g	1-2	0-0	0-0	0	1	1	0	2	0	0	0	0	5		
10	Jerome, Alyssa	g	0-3	0-1	4-6	2	0	2	1	4	1	0	0	1	11		
14	Brewer, Mikaela	g	0-0	0-0	0-0	0	0	0	0	0	0	0	0	0	1		
15	Dodson, Maya	g	3-4	0-0	1-1	0	1	1	2	7	0	1	2	0	15		
20	Moschkau, Estella	g	0-0	0-0	0-0	0	0	0	1	0	0	2	0	2	6		
22	Romano, Alexa	g	0-0	0-0	0-0	0	0	0	0	0	0	0	0	0	2		
24	Hull, Lacie	g	3-4	2-3	0-0	0	3	3	0	8	6	2	2	3	28		
54	Brown, Jenna	g	0-1	0-1	0-0	0	0	0	2	0	0	0	0	0	14		
Team						1	2	3									
Totals			30-53	8-21	13-17	8	24	32	11	81	18	13	5	13	200		

1st FG %:	5-14	35.7%	2nd:	11-18	61.1%	3rd:	9-13	69.2%	4th:	5-8	62.5%	Game:	30-53	56.6%	Deadball	
3FG %:	0-7	0.0%	3-6	50.0%	3-5	60.0%	3-6	50.0%	5-6	83.3%	13-17	76.5%	Rebounds			
FT %:	5-5	100.0%	0-0	0.0%	3-6	50.0%										

Hawaii 59 • 1-7

#	Player	Total			3-Ptr			Rebounds			PF	TP	A	TO	Blk	Stl	Min
		FG-FGA	FG-FGA	FT-FTA	FG-FGA	FG-FGA	FT-FTA	Off	Def	Tot							
12	Salanoa, Leah	f	2-4	2-3	0-0	1	1	2	2	6	3	2	0	0	23		
35	Woodfolk, Makenna	f	6-9	3-4	1-1	1	4	5	4	16	0	1	0	1	20		
01	Odumu, Rachel	g	1-3	1-1	0-0	0	0	0	1	3	1	2	0	0	14		
02	Middap, Courtney	g	4-7	3-3	0-0	0	2	2	1	11	3	3	1	0	24		
11	Kanoa, Tia	g	1-3	1-2	0-0	0	2	2	0	3	6	4	0	3	33		
00	Tago, Julissa	g	2-10	1-5	0-0	1	0	1	0	5	0	0	0	0	20		
04	Reier, Savannah	g	0-2	0-1	0-0	0	1	1	3	0	2	1	0	1	14		
05	Joseph, Myrrah	g	1-3	0-0	0-0	1	0	1	1	2	0	2	0	0	10		
14	Rewers, Lauren	g	3-5	0-0	0-0	1	1	2	5	6	1	2	0	1	17		
15	Alexander, Jadynn	g	0-1	0-0	0-0	0	0	0	0	0	0	0	0	0	9		
25	Atweller, Amy	g	2-7	2-3	1-1	0	3	3	2	7	1	2	0	0	16		
Team						1	2	3									
Totals			22-54	13-22	2-2	6	16	22	19	59	17	19	1	6	200		

1st FG %:	3-12	25.0%	2nd:	6-12	50.0%	3rd:	8-13	61.5%	4th:	5-17	29.4%	Game:	22-54	40.7%	Deadball	
3FG %:	2-2	100.0%	2-3	66.7%	7-9	77.8%	2-8	25.0%	13-22	59.1%	13-22	59.1%	Rebounds			
FT %:	0-0	0.0%	0-0	0.0%	1-1	100.0%			1-1	100.0%						

Officials: Lajwan Robinson, Matt Shute, Ethan Kahoano
 Technical fouls: Stanford-None. Hawaii-None.
 Attendance: 1383
 Game called at 00:48.2 due to injury to Stanford player.

Score by periods	1st	2nd	3rd	4th	Total
Stanford	15	25	24	17	81
Hawaii	8	14	24	13	59

Last FG - STAN 4th-04:09, UH 4th-02:25.
 Largest lead - STAN by 25 4th-02:56, UH by 2 1st-04:44.
 STAN led for 38:57. UH led for 00:24. Game was tied for 00:24.

Official Basketball Box Score -- Game Totals -- Final Statistics
Stanford vs Gonzaga
12/2/18 2:00 PM at Spokane, WA (McCarthy Athletic Center)

Stanford 73 • 6-1

#	Player	Total			3-Ptr			Rebounds			PF	TP	A	TO	Blk	Stl	Min
		FG-FGA	FG-FGA	FT-FTA	FG-FGA	FG-FGA	FT-FTA	Off	Def	Tot							
04	Fingall, Nadia	f	2-4	1-2	0-0	1	2	3	2	5	3	1	1	2	25		
11	Smith, Alanna	f	4-9	2-5	3-6	2	5	7	5	13	1	3	2	3	24		
24	Hull, Lacie	f	2-3	1-2	4-4	1	0	1	2	9	3	1	0	3	37		
21	Carrington, Dijonai	g	5-13	1-5	2-5	0	3	3									

Official Basketball Box Score -- Game Totals -- Final Statistics
Stanford vs Tennessee
12/18/18 6:00 PM at Knoxville, Tenn. (Thompson-Boling Arena)

Stanford 95 • 8-1

#	Player	Total			Rebounds			PF	TP	A	TO	Blk	Stl	Min
		FG-FGA	3-Ptr	FT-FTA	Off	Def	Tot							
04	Fingall, Nadia	r	1-4	0-0	1-2	2	4	6	0	3	1	2	0	18
11	Smith, Alanna	r	5-6	3-4	3-4	1	2	3	5	16	3	2	1	21
24	Hull, Lacie	r	5-8	4-5	0-0	1	2	3	14	1	0	1	0	32
21	Carrington, Dijonai	g	11-15	4-5	7-9	0	13	13	1	33	2	5	0	38
23	Williams, Kiana	g	5-13	3-7	3-4	0	5	5	3	16	7	6	0	38
02	Coffee, Shannon	g	0-2	0-2	0-0	0	2	2	0	0	1	1	0	8
10	Jerome, Alyssa	g	0-1	0-0	0-0	1	1	2	0	0	0	2	0	4
15	Dodson, Maya	g	5-7	0-0	0-0	4	5	9	3	10	2	1	1	32
54	Brown, Jenna	g	1-4	0-1	1-2	0	1	1	0	3	2	0	0	9
Team						0	1	1			1			
Totals			33-60	14-24	15-21	9	36	45	15	95	19	20	3	200

1st - FG %: 8-16 50.0% 2nd: 9-16 56.3% 3rd: 8-14 57.1% 4th: 8-14 57.1% Game: 33-60 55.0% Deadball Rebounds 5.1
 3FG %: 4-6 66.7% 5-9 55.6% 2-4 50.0% 3-5 60.0% 14-24 58.3%
 FT %: 2-2 100.0% 2-3 66.7% 2-4 50.0% 9-12 75.0% 15-21 71.4%

Tennessee 85 • 8-1

#	Player	Total			Rebounds			PF	TP	A	TO	Blk	Stl	Min
		FG-FGA	3-Ptr	FT-FTA	Off	Def	Tot							
00	Davis, Rennia	f	5-15	2-5	2-2	1	9	10	2	14	1	1	0	35
15	Green, Cheridene	f	3-6	0-0	0-0	2	1	3	3	6	0	0	0	20
02	Westbrook, Evina	g	10-21	2-5	7-9	1	3	4	3	29	10	4	0	24
10	Jackson, Meme	g	4-14	3-13	6-10	2	2	4	3	17	1	1	0	35
14	Green, Zaay	g	6-16	2-5	0-0	1	1	2	5	14	1	0	0	30
04	Collins, Mimi	g	2-3	0-0	1-2	2	0	2	4	5	0	0	0	15
05	Harris, Kamera	g	0-0	0-0	0-0	0	1	1	1	0	0	2	0	2
11	Kushkituah, Kasiyahna	g	0-0	0-0	0-0	0	0	0	0	0	0	0	0	8
12	Burrell, Rae	g	0-0	0-0	0-0	0	0	0	0	0	0	0	0	1
13	Massengill, Jazmine	g	0-0	0-0	0-0	3	2	5	0	0	1	0	0	12
Team						0	0	0						
Totals			30-75	9-28	16-23	12	19	31	21	85	14	8	0	200

1st - FG %: 6-18 33.3% 2nd: 7-19 36.8% 3rd: 10-20 50.0% 4th: 7-18 38.9% Game: 30-75 40.0% Deadball Rebounds 3
 3FG %: 1-4 25.0% 3-8 37.5% 1-5 20.0% 3-11 27.3% 9-28 32.1%
 FT %: 4-6 66.7% 3-3 100.0% 3-5 60.0% 6-9 66.7% 16-23 69.6%

Officials: Mark Zentz, Felicia Grinter, Cameron Inouye
 Technical fouls: Stanford-None. Tennessee-None.
 Attendance: 8051

Score by periods	1st	2nd	3rd	4th	Total
Stanford	22	25	20	28	95
Tennessee	17	20	25	23	85

Last FG - STAN 4th-01:40, UT 4th-01:27.
 Largest lead - STAN by 15 2nd-01:44, UT by 2 3rd-04:22.
 STAN led for 37:18. UT led for 00:38. Game was tied for 01:39.

Points	In	Off	2nd	Fast	Bench
STAN	38	9	4	11	13
UT	42	17	11	11	5

Score tied - 2 times.
 Lead changed - 2 times.

Official Basketball Box Score -- Game Totals -- Final Statistics
Stanford vs Buffalo
12/21/18 12:00 PM at Buffalo N.Y. (Alumni Arena)

Stanford 62 • 9-1

#	Player	Total			Rebounds			PF	TP	A	TO	Blk	Stl	Min
		FG-FGA	3-Ptr	FT-FTA	Off	Def	Tot							
04	Fingall, Nadia	r	5-9	0-0	2-4	3	4	7	1	12	1	1	0	29
11	Smith, Alanna	r	12-22	4-9	2-2	3	10	13	2	30	5	5	3	38
24	Hull, Lacie	r	0-1	0-1	0-0	0	5	5	2	0	2	0	0	24
21	Carrington, Dijonai	g	1-7	0-3	2-2	1	9	10	3	4	0	5	1	23
23	Williams, Kiana	g	2-9	1-6	2-4	0	2	2	3	7	7	1	0	40-
02	Coffee, Shannon	g	0-0	0-0	0-0	0	0	0	0	0	0	0	0	0+
10	Jerome, Alyssa	g	0-1	0-0	0-0	0	0	0	0	2	0	1	0	9
14	Brewer, Mikaela	g	0-0	0-0	0-0	0	0	0	0	1	0	0	0	1
15	Dodson, Maya	g	3-8	0-0	3-3	1	0	1	2	9	1	2	1	17
20	Moschkau, Estella	g	0-0	0-0	0-0	0	0	0	0	0	0	0	0	0+
22	Romano, Alexa	g	0-1	0-0	0-0	0	0	0	0	0	0	1	0	1
54	Brown, Jenna	g	0-1	0-0	0-0	0	1	1	2	0	1	1	0	6
Team						4	2	6						
Totals			23-59	5-20	11-15	12	33	45	18	62	18	19	5	200

1st - FG %: 7-15 46.7% 2nd: 4-16 25.0% 3rd: 4-15 26.7% 4th: 8-13 61.5% Game: 23-59 39.0% Deadball Rebounds 2.1
 3FG %: 2-6 33.3% 0-8 0.0% 0-2 0.0% 3-7 42.9%
 FT %: 0-0 0.0% 3-3 100.0% 4-6 66.7% 4-6 66.7%

Buffalo 55 • 7-3

#	Player	Total			Rebounds			PF	TP	A	TO	Blk	Stl	Min
		FG-FGA	3-Ptr	FT-FTA	Off	Def	Tot							
00	HEMPHILL, Summer	r	4-9	0-0	2-4	3	5	8	0	10	2	3	0	39
12	WILKINS, Courtney	r	1-8	1-6	0-0	2	1	3	2	3	0	1	0	25
10	HALL, Hanna	g	3-10	3-8	2-2	2	3	5	2	11	2	1	0	34
11	ONWUKA, Theresa	g	2-9	0-3	1-1	5	8	13	4	5	2	3	0	31
24	DILLARD, Cierra	g	8-25	2-10	3-5	2	2	4	4	21	3	5	0	40-
13	JONES, Autumn	g	0-3	0-2	0-0	0	0	0	0	0	0	0	0	6
22	SODADE, Ayoleka	g	0-1	0-0	1-2	0	1	1	0	1	0	0	0	1
32	MORRISON, Brittany	g	1-4	0-0	2-3	1	3	4	3	4	3	1	0	16
Team						3	3	6						
Totals			19-69	6-29	11-17	18	26	44	15	55	12	14	0	200

1st - FG %: 4-16 25.0% 2nd: 6-21 28.6% 3rd: 2-12 16.7% 4th: 7-20 35.0% Game: 19-69 27.5% Deadball Rebounds 4
 3FG %: 0-6 0.0% 1-9 11.1% 1-4 25.0% 4-10 40.0%
 FT %: 1-2 50.0% 0-0 0.0% 6-9 66.7% 4-6 66.7%

Officials: Chris Minor, Robert McDow, Kristyene Esparza
 Technical fouls: Stanford-None. Buffalo-None.
 Attendance: 3412

Score by periods	1st	2nd	3rd	4th	Total
Stanford	16	11	12	23	62
Buffalo	9	13	11	22	55

Last FG - STAN 4th-01:42, BUF 4th-00:03.
 Largest lead - STAN by 12 4th-01:42, BUF None.
 STAN led for 39:49. BUF led for 00:00. Game was tied for 00:11.

Score tied - 0 times.
 Lead changed - 0 times.

Points	In	Off	2nd	Fast	Bench
STAN	28	13	8	8	9
BUF	18	10	16	6	5

Official Basketball Box Score -- Game Totals -- Final Statistics
CSUN vs Stanford
12/29/18 2:00 PM at Stanford, Calif. (Maples Pavilion)

CSUN 43 • 6-8

#	Player	Total			Rebounds			PF	TP	A	TO	Blk	Stl	Min
		FG-FGA	3-Ptr	FT-FTA	Off	Def	Tot							
11	Juliana Louis	f	2-9	0-2	0-3	5	5	10	2	4	1	3	0	27
52	Eliza Matthews	f	1-3	0-0	1-3	2	1	3	1	3	1	2	0	11
03	Channon Fluker	c	3-13	0-1	0-0	0	2	2	3	6	1	0	3	31
33	Serafina Maulupe	g	1-9	1-7	2-2	1	3	4	1	5	0	1	0	23
02	Meghann Henderson	g	3-8	1-4	0-0	0	3	3	1	7	4	1	1	34
17	Jordyn Jackson	g	1-2	0-0	0-0	0	0	0	2	1	2	0	0	16
02	Destiny Brooks	g	2-3	1-2	0-0	0	0	0	5	0	0	0	0	3
15	Claudia Ramos	g	2-8	2-5	0-0	0	3	3	1	6	1	2	0	18
44	Lauren Shymkewicz	g	1-1	0-0	2-2	0	1	1	0	4	2	0	0	22
55	De'Jonae Calloway	g	0-3	0-0	1-2	0	3	3	0	1	0	1	0	15
Team						4	2	6						
Totals			16-59	5-21	6-12	12	23	35	9	43	11	15	4	200

1st - FG %: 1-12 8.3% 2nd: 3-14 21.4% 3rd: 4-15 26.7% 4th: 8-18 44.4% Game: 16-59 27.1% Deadball Rebounds 3
 3FG %: 1-5 20.0% 0-4 0.0% 2-7 28.6% 5-21 23.8%
 FT %: 1-2 50.0% 2-3 66.7% 1-2 50.0% 2-5 40.0% 6-12 50.0%

Stanford 69 • 10-1

#	Player	Total			Rebounds			PF	TP	A	TO	Blk	Stl	Min
		FG-FGA	3-Ptr	FT-FTA	Off	Def	Tot							
04	Fingall, Nadia	r	3-8	0-1	0-0	1	1	2	3	6	0	0	0	10
11	Smith, Alanna	r	6-10	0-2	2-2	1	4	5	3	14	1	0	1	17
24	Hull, Lacie	r	4-7	2-5	0-0	2	2	4	1	10	2	1	0	23
21	Carrington, Dijonai	g	2-6	1-3	0-0	2	10	12	1	5	2	1	0	26
23	Williams, Kiana	g	0-6	0-4	0-0	0	2	2	0	0	1	1	0	21
02	Coffee, Shannon	g	2-3	0-0	0-0	2	1	3	0	4	1	1	0	9
10	Jerome, Alyssa	g	2-4	1-2	0-0	0	2	2	2	5	2	1	0	

Official Basketball Box Score -- Game Totals -- Final Statistics
UCLA vs Stanford
 1/6/19 1:00 PM at Stanford, Calif. (Maples Pavilion)

UCLA 80 • 9-6, 2-1

#	Player	Total			3-Ptr			Rebounds			PF	TP	A	TO	Blk	Stl	Min
		FG-FGA	FG-FGA	FT-FTA	FG-FGA	FG-FGA	FT-FTA	Off	Def	Tot							
11	Lajahna Drummer	r	3-5	1-1	1-3	2	2	4	3	8	0	0	0	1	27		
21	Michaela Onyenwere	r	4-16	1-5	2-2	6	6	12	2	11	1	3	2	1	38		
04	Lindsey Corsaro	g	4-8	4-6	2-4	0	4	4	1	14	2	3	0	1	33		
22	Kennedy Burke	g	4-10	1-3	2-6	4	4	8	3	11	1	2	0	1	28		
24	Japreece Dean	g	10-17	2-5	0-0	0	0	0	4	22	4	3	0	1	39		
00	Chantel Horvat	g	2-3	0-0	0-0	0	0	0	2	4	1	0	0	0	10		
02	Ahiana Smith	g	3-8	1-2	0-0	0	5	2	7	1	2	1	1	1	18		
33	Lauryn Miller	g	1-2	1-2	0-0	0	0	0	4	3	0	0	0	0	7		
	Team		4	1	5												
Totals			31-69	11-24	7-15	16	22	38	21	80	10	13	3	6	200		

1st - FG %:	9-16	56.3%	2nd - 9-18	50.0%	3rd - 4-19	21.1%	4th - 9-16	56.3%	Game - 31-69	44.9%	Deadball	
3FG %:	4-5	80.0%	3-4	75.0%	1-9	11.1%	3-6	50.0%	11-24	45.8%	Rebounds	4
FT %:	2-2	100.0%	0-0	0.0%	3-6	50.0%	2-7	28.6%	7-15	46.7%		

Stanford 86 • 12-1, 2-0

#	Player	Total			3-Ptr			Rebounds			PF	TP	A	TO	Blk	Stl	Min
		FG-FGA	FG-FGA	FT-FTA	FG-FGA	FG-FGA	FT-FTA	Off	Def	Tot							
10	Jerome, Alyssa	r	2-2	2-2	0-0	0	2	3	1	6	0	0	0	0	20		
11	Smith, Alanna	r	8-18	3-5	5-6	2	9	11	4	24	3	2	5	2	40		
24	Hull, Lacie	r	2-6	1-4	0-0	0	2	2	0	5	6	0	0	2	38		
21	Carrington, Dijonai	g	11-18	3-6	5-6	4	5	9	3	30	1	6	0	1	39		
23	Williams, Kiana	g	7-14	3-9	4-5	0	2	2	0	21	10	2	0	3	39		
02	Coffee, Shannon	g	0-0	0-0	0-0	0	0	0	1	0	1	0	0	1	12		
03	Wilson, Anna	g	0-0	0-0	0-0	0	0	0	0	0	0	1	0	0	1		
12	Hull, Lexie	g	0-4	0-2	0-0	0	3	3	1	0	0	3	0	0	8		
54	Brown, Jenna	g	0-1	0-0	0-0	0	0	0	0	0	0	1	0	1	3		
	Team		3	4	7												
Totals			30-63	12-28	14-17	12	25	37	10	86	21	15	5	10	200		

1st - FG %:	7-15	46.7%	2nd - 6-14	42.9%	3rd - 9-16	56.3%	4th - 8-18	44.4%	Game - 30-63	47.6%	Deadball	
3FG %:	4-9	44.4%	2-6	33.3%	3-7	42.9%	3-6	50.0%	12-28	42.9%	Rebounds	2,1
FT %:	5-6	83.3%	1-2	50.0%	5-5	100.0%	3-4	75.0%	14-17	82.4%		

Officials: Kenneth Nash, Penny Davis, Lisa Jones
 Technical fouls: UCLA-None. Stanford-None.
 Attendance: 3231

Score by periods	1st	2nd	3rd	4th	Total
UCLA	24	21	12	23	80
Stanford	23	15	26	22	86

Points In Off 2nd Fast Bench
 Paint T/O Chance Break
 UCLA 30 18 17 4 14
 Stanford 30 16 6 11 0

Score tied - 3 times.
 Lead changed - 7 times.
 Last FG - UCLA 4th-00:06, STAN 4th-00:24.
 Largest lead - UCLA by 12 2nd-03:08, STAN by 11 4th-09:15.
 UCLA led for 18:50. STAN led for 18:43. Game was tied for 02:27.

Official Basketball Box Score -- Game Totals -- Final Statistics
Stanford vs Arizona State
 1/11/19 7:00 PM at Tempe, Ariz. (Wells Fargo Arena)

Stanford 72 • 13-1, 3-0

#	Player	Total			3-Ptr			Rebounds			PF	TP	A	TO	Blk	Stl	Min
		FG-FGA	FG-FGA	FT-FTA	FG-FGA	FG-FGA	FT-FTA	Off	Def	Tot							
10	Jerome, Alyssa	r	1-3	0-0	0-0	0	1	1	1	2	0	1	0	0	13		
11	Smith, Alanna	r	9-15	1-3	6-6	1	5	6	4	25	2	2	1	1	37		
24	Hull, Lacie	r	3-5	1-2	1-1	0	1	1	1	8	2	0	0	2	30		
21	Carrington, Dijonai	g	6-11	3-5	2-2	3	8	11	2	17	1	5	0	1	36		
23	Williams, Kiana	g	3-8	1-3	3-3	0	4	4	1	10	4	4	0	1	39		
02	Coffee, Shannon	g	0-1	0-1	0-0	0	1	1	1	0	2	0	1	2	9		
03	Wilson, Anna	g	3-5	0-1	0-0	0	0	0	1	6	1	2	0	1	18		
12	Hull, Lexie	g	1-2	0-0	2-2	2	3	5	1	4	0	1	1	0	15		
54	Brown, Jenna	g	0-0	0-0	0-0	0	0	0	0	0	0	0	1	0	3		
	Team		0	0	3												
Totals			26-50	6-15	14-14	6	26	32	12	72	12	16	3	8	200		

1st - FG %:	6-10	60.0%	2nd - 7-13	53.8%	3rd - 5-15	33.3%	4th - 8-12	66.7%	Game - 26-50	52.0%	Deadball	
3FG %:	2-4	50.0%	2-2	100.0%	1-7	14.3%	1-2	50.0%	6-15	40.0%	Rebounds	0
FT %:	4-4	100.0%	0-0	0.0%	6-6	100.0%	4-4	100.0%	14-14	100.0%		

Arizona State 65 • 11-4, 2-2

#	Player	Total			3-Ptr			Rebounds			PF	TP	A	TO	Blk	Stl	Min
		FG-FGA	FG-FGA	FT-FTA	FG-FGA	FG-FGA	FT-FTA	Off	Def	Tot							
22	Ekmark, Courtney	r	4-13	3-9	0-0	0	1	1	1	11	3	1	0	0	28		
42	Ibis, Kianna	r	3-8	0-1	0-0	5	2	7	3	6	1	1	0	1	30		
33	Johnson-Chapman, Char	c	8-12	0-0	0-0	5	1	6	2	16	2	0	2	3	26		
01	Richardson, Reili	g	2-5	0-1	1-1	0	3	3	0	5	4	1	0	1	26		
11	Ryan, Robbi	g	4-10	1-4	2-2	0	2	2	3	11	1	3	0	1	26		
00	Hanson, Taya	g	1-7	0-3	0-3	2	3	5	0	2	2	1	1	2	16		
04	Russell, Kiara	g	3-5	0-0	0-0	1	2	3	2	6	1	2	0	0	14		
21	Elena, Sophia	g	1-3	0-0	0-0	2	1	3	1	2	1	0	0	0	16		
23	Mbulito, Iris	g	2-5	0-0	0-1	1	0	1	2	4	0	2	0	1	9		
32	Van Hyfte, Jayde	g	0-0	0-0	0-0	0	0	0	0	0	0	1	0	0	2		
52	Ruden, Jamie	g	1-6	0-1	0-0	0	1	1	0	2	0	1	0	0	7		
	Team		6	2	8												
Totals			29-74	4-19	3-7	22	18	40	14	65	15	13	3	9	200		

1st - FG %:	5-20	25.0%	2nd - 5-16	31.3%	3rd - 12-18	66.7%	4th - 7-20	35.0%	Game - 29-74	39.2%	Deadball	
3FG %:	0-3	0.0%	1-7	14.3%	1-3	33.3%	2-6	33.3%	4-19	21.1%	Rebounds	1
FT %:	1-3	33.3%	0-1	0.0%	0-1	0.0%	2-2	100.0%	3-7	42.9%		

Officials: Michael Price, Michol Murray, Kent Johnson
 Technical fouls: Stanford-None. Arizona State-None.
 Attendance: 2728

Score by periods	1st	2nd	3rd	4th	Total
Stanford	18	16	17	21	72
Arizona State	11	11	25	18	65

Points In Off 2nd Fast Bench
 Paint T/O Chance Break
 STAN 32 10 8 2 10
 ASU 28 10 20 3 16

Score tied - 3 times.
 Lead changed - 2 times.
 Last FG - STAN 4th-00:38, ASU 4th-01:12.
 Largest lead - STAN by 12 2nd-03:44, ASU by 2 1st-06:04.
 STAN led for 35:52. ASU led for 00:11. Game was tied for 03:54.

Official Basketball Box Score -- Game Totals -- Final Statistics
Stanford vs Arizona
 1/13/19 12:00 PM at Tucson, Ariz. (McKale Center)

Stanford 78 • 14-1, 4-0

#	Player	Total			3-Ptr			Rebounds			PF	TP	A	TO	Blk	Stl	Min
		FG-FGA	FG-FGA	FT-FTA	FG-FGA	FG-FGA	FT-FTA	Off	Def	Tot							
10	Jerome, Alyssa	r	1-5	0-3	0-0	0	6	6	3	2	1	3	1	0	28		
11	Smith, Alanna	r	8-16	4-6	0-0	5	9	14	2	20	2	3	7	0	27		
24	Hull, Lacie	r	0-2	0-2	2-2	0	1	2	2	3	1	0	1	0	22		
21	Carrington, Dijonai	g	6-16	3-8	4-4	0	8	0	19	1	2	0	0	30			
23	Williams, Kiana	g	5-7	3-3	0-0	0	1	1	0	13	7	0	0	0	25		
02	Coffee, Shannon	g	1-4	0-3	0-0	2	1	3	0	2	1	0	0	1	13		
03	Wilson, Anna	g	1-3	0-2	0-0	0	2	2	0	2	0	0	0	1	11		
12	Hull, Lexie	g	3-4	2-2	0-0	2	3	5	4	8	0	1	0	0	14		
14	Brewer, Mikaela	g	0-1	0-0	1-2	1	0	1	1	0	0	0	0	1	6		
20	Moschkau, Estella	g	0-0	0-0	0-0	0	2	2	0	1	0	0	0	0	4		
54	Brown, Jenna	g	3-5	1-2	2-2	0	1	1	1	9	0	4	0	0	20		
	Team		1	1	2												
Totals			28-63	13-31	9-12	11	35	46									

Official Basketball Box Score -- Game Totals -- Final Statistics
Washington St. vs Stanford
1/20/19 12:00 PM at Stanford, Calif. (Maples Pavilion)

Washington St. 64 • 7-11, 2-5

#	Player	Total			3-Ptr			Rebounds			PF	TP	A	TO	Bk	Stl	Min
		FG	FGA	FT	FTA	FG	FGA	FT	FTA	Off							
13	Shir Levy	f	2-6	2-5	2-2	0	1	2	8	3	2	1	0	17			
45	Borisilava Hristova	f	4-10	1-3	2-4	2	5	7	0	11	0	2	1	0	35		
20	Maria Kostourkova	c	3-4	0-0	0-0	3	5	8	2	6	1	3	0	0	31		
11	Chanelle Molina	g	6-20	2-7	4-4	3	4	7	3	18	6	3	0	1	37		
23	Alexys Swedlund	g	4-14	0-4	4-5	0	2	2	3	12	2	1	0	1	33		
02	Michaela Jones	g	1-2	1-2	0-0	0	2	2	1	3	0	0	0	0	12		
22	Celena Molina	g	1-2	0-0	0-0	1	1	2	1	2	0	0	0	1	3		
33	Cherilyn Molina	g	0-2	0-2	0-0	0	1	1	0	0	1	1	0	0	14		
41	Jovana Subasic	g	2-4	0-0	0-0	2	2	4	1	4	0	2	1	0	18		
Team						2	2	4									
Totals			23-64	6-23	12-15	13	25	38	13	64	13	14	3	3	200		

1st - FG %: 5-14 35.7% 2nd: 3-14 21.4% 3rd: 7-17 41.2% 4th: 8-19 42.1% Game: 23-64 35.9% Deadball Rebounds 1
 3FG %: 3-8 37.5% 0-5 0.0% 2-6 33.3% 1-4 25.0% 6-23 26.1%
 FT %: 0-0 0.0% 7-10 70.0% 2-2 100.0% 3-3 100.0% 12-15 80.0%

Stanford 85 • 16-1, 6-0

#	Player	Total			3-Ptr			Rebounds			PF	TP	A	TO	Bk	Stl	Min
		FG	FGA	FT	FTA	FG	FGA	FT	FTA	Off							
10	Jerome, Alyssa	f	2-7	0-2	0-0	0	2	2	1	4	1	0	1	0	24		
11	Smith, Alanna	f	13-17	4-5	4-6	3	12	15	0	34	3	1	2	1	31		
24	Hull, Lacie	f	2-7	2-4	2-2	1	0	1	1	8	1	0	1	1	24		
21	Carrington, DiJonai	g	4-8	0-1	3-3	1	3	4	3	11	3	2	1	1	24		
23	Williams, Kiana	g	8-14	3-6	0-0	0	0	2	2	19	3	3	0	1	29		
02	Coffee, Shannon	g	0-0	0-0	0-0	0	4	4	2	0	1	0	0	0	11		
03	Wilson, Anna	g	2-2	1-1	0-0	0	0	0	1	5	0	0	0	0	10		
12	Hull, Lexie	g	0-6	0-2	0-0	1	6	7	1	0	1	1	0	1	24		
14	Brewer, Mikaela	g	0-1	0-0	0-0	0	0	0	0	0	0	0	1	0	6		
20	Moschkau, Estella	g	0-0	0-0	0-0	0	1	1	0	0	0	0	0	0	3		
54	Brown, Jenna	g	1-2	0-0	2-2	0	1	1	0	4	1	2	1	0	14		
Team						1	1	2									
Totals			32-64	10-21	11-13	7	30	37	12	85	14	10	7	5	200		

1st - FG %: 11-20 55.0% 2nd: 7-19 36.8% 3rd: 10-13 76.9% 4th: 4-12 33.3% Game: 32-64 50.0% Deadball Rebounds 2
 3FG %: 3-6 50.0% 1-5 20.0% 4-5 80.0% 2-5 40.0% 10-21 47.6%
 FT %: 4-4 100.0% 0-0 0.0% 7-9 77.8% 0-0 0.0% 11-13 84.6%

Officials: Kenneth Nash, Cathi Cornell, Michael Price
 Technical fouls: Washington St.-None. Stanford-None.
 Attendance: 2908

Score by periods	1st	2nd	3rd	4th	Total	In	Off	2nd	Fast	Bench	
Washington St.	13	13	18	20	64	WSU	22	9	15	5	9
Stanford	29	15	31	10	85	STAN	38	23	10	12	9

Last FG - WSU 4th-02:09, STAN 4th-01:37.
 Largest lead - WSU by 2 1st-09:18, STAN by 33 4th-09:07.
 WSU led for 00:24. STAN led for 38:46. Game was tied for 00:42.
 Score tied - 0 times.
 Lead changed - 1 time.

Official Basketball Box Score -- Game Totals -- Final Statistics
Stanford vs Colorado
1/25/19 7:00 PM at Boulder, Colo. (CU Events Center)

Stanford 80 • 17-1, 7-0

#	Player	Total			3-Ptr			Rebounds			PF	TP	A	TO	Bk	Stl	Min
		FG	FGA	FT	FTA	FG	FGA	FT	FTA	Off							
10	Jerome, Alyssa	f	1-2	0-0	0-0	3	1	4	1	2	1	0	1	0	15		
11	Smith, Alanna	f	9-19	3-8	5-6	1	5	6	3	26	2	2	5	3	38		
24	Hull, Lacie	f	1-2	0-1	1-1	0	0	0	3	3	5	0	2	0	25		
21	Carrington, DiJonai	g	2-12	0-2	8-11	2	11	13	1	12	0	2	0	1	32		
23	Williams, Kiana	g	8-20	2-9	2-2	0	2	2	0	20	7	1	0	1	39		
02	Coffee, Shannon	g	0-0	0-0	0-0	1	0	1	0	0	0	0	0	0	8		
03	Wilson, Anna	g	4-8	1-5	0-0	2	0	2	0	9	1	1	0	2	22		
12	Hull, Lexie	g	3-5	0-2	2-2	3	3	6	2	8	1	0	0	1	18		
14	Brewer, Mikaela	g	0-0	0-0	0-0	0	0	0	0	0	0	0	0	0	0+		
20	Moschkau, Estella	g	0-0	0-0	0-0	0	0	0	0	0	0	0	0	0	0+		
54	Brown, Jenna	g	0-1	0-1	0-0	0	1	1	0	0	0	0	0	0	3		
Team						4	3	7									
Totals			28-69	6-28	18-22	16	26	42	10	80	17	6	6	10	200		

1st - FG %: 6-22 27.3% 2nd: 4-16 25.0% 3rd: 12-18 66.7% 4th: 6-13 46.2% Game: 28-69 40.6% Deadball Rebounds 1
 3FG %: 0-7 0.0% 0-6 0.0% 5-9 55.6% 1-6 16.7% 6-28 21.4%
 FT %: 1-1 100.0% 7-8 87.5% 3-5 60.0% 7-8 87.5%

Colorado 69 • 10-8, 0-7

#	Player	Total			3-Ptr			Rebounds			PF	TP	A	TO	Bk	Stl	Min
		FG	FGA	FT	FTA	FG	FGA	FT	FTA	Off							
25	Annika Jank	f	4-9	2-4	0-0	2	8	10	3	10	0	2	0	1	36		
00	Quinessa Caylao-Do	g	2-12	0-1	2-4	2	1	3	5	6	6	4	0	0	32		
02	Alexis Robinson	g	6-17	5-12	8-8	1	2	3	4	25	2	3	2	1	38		
04	Leslia Finau	g	1-5	1-3	2-2	1	5	6	1	5	2	5	1	1	29		
21	Mya Hollingshed	g	4-11	3-6	3-3	2	3	5	4	14	0	0	1	1	31		
03	Emma Clarke	g	3-5	1-2	0-0	2	2	4	2	7	0	1	1	0	23		
12	Peyton Carter	g	0-0	0-0	0-0	0	1	1	0	0	0	0	0	0	1		
30	Kai Volcy	g	1-2	0-0	0-0	1	2	3	2	2	0	0	1	0	10		
Team						5	4	9									
Totals			21-61	12-28	15-17	16	28	44	21	69	10	15	6	4	200		

1st - FG %: 5-17 29.4% 2nd: 7-14 50.0% 3rd: 3-14 21.4% 4th: 6-16 37.5% Game: 21-61 34.4% Deadball Rebounds 0
 3FG %: 4-7 57.1% 2-6 33.3% 1-4 25.0% 5-11 45.5% 12-28 42.9%
 FT %: 4-4 100.0% 2-2 100.0% 5-7 71.4% 4-4 100.0% 15-17 88.2%

Officials: Brian Woods, Clarke Stevens, Penny Davis
 Technical fouls: Stanford-None. Colorado-None.
 Attendance: 2373

Score by periods	1st	2nd	3rd	4th	Total	In	Off	2nd	Fast	Bench	
Stanford	13	15	32	20	80	STAN	42	15	21	17	17
Colorado	18	18	12	21	69	COLO	10	4	12	4	9

Last FG - STAN 4th-03:12, COLO 4th-01:27.
 Largest lead - STAN by 19 4th-05:17, COLO by 10 1st-02:54.
 STAN led for 17:09, COLO led for 21:36. Game was tied for 01:15.
 Score tied - 3 times.
 Lead changed - 2 times.

Official Basketball Box Score -- Game Totals -- Final Statistics
Stanford vs Utah
1/27/19 12:00 PM at Salt Lake City, Utah (Huntsman Center)

Stanford 68 • 17-2, 7-1

#	Player	Total			3-Ptr			Rebounds			PF	TP	A	TO	Bk	Stl	Min
		FG	FGA	FT	FTA	FG	FGA	FT	FTA	Off							
10	Jerome, Alyssa	f	4-8	1-3	0-0	2	4	6	4	9	1	0	1	0	21		
11	Smith, Alanna	f	6-17	3-9	4-5	0	9	9	5	19	0	4	3	0	25		
24	Hull, Lacie	f	2-5	1-2	2-4	2	1	3	1	7	3	1	1	2	33		
21	Carrington, DiJonai	g	6-15	1-4	0-1	2	3	5	0	13	1	2	0	0	33		
23	Williams, Kiana	g	4-13	1-8	1-1	0	5	5	1	10	7	2	1	1	37		
02	Coffee, Shannon	g	0-2	0-1	0-0	0	1	1	1	0	3	0	1	0	11		
03	Wilson, Anna	g	0-0	0-0	0-0	1	0	1	0	0	0	2	0	0	5		
12	Hull, Lexie	g	3-5	1-1	3-4	1	1	2	2	10	1	0	0	0	33		
54	Brown, Jenna	g	0-0	0-0	0-0	0	0	0	1	0	1	1	0	0	2		
Team						4	2	6									
Totals			25-65	8-28	10-15	12	26	38	15	68	17	13	7	3	200		

1st - FG %: 4-18 22.2% 2nd: 7-12 58.3% 3rd: 7-17 41.2% 4th: 7-18 38.9% Game: 25-65 38.5% Deadball Rebounds 2
 3FG %: 1-6 16.7% 2-5 40.0% 3-9 33.3% 2-8 25.0% 8-28 28.6%
 FT %: 3-3 100.0% 3-4 75.0% 2-2 100.0% 2-6 33.3% 10-15 66.7%

Utah 75 • 18-1, 7-1

#	Player	Total			3-Ptr			Rebounds			PF	TP	A	TO	Bk	Stl	Min
		FG	FGA	FT	FTA	FG	FGA	FT	FTA	Off							
05	Megan Huff	f	5-15														

TV/RADIO ROSTER



#2
SHANNON COFFEE
C • 6-5 • SR
DAYTON, OHIO
CENTERVILLE



#3
ANNA WILSON
G • 5-9 • JR
SEATTLE, WASH.
BELLEVUE



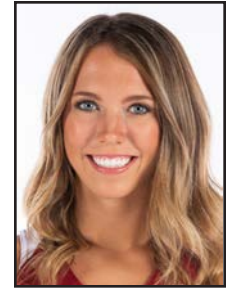
#4
NADIA FINGALL
F • 6-3 • JR
NAVARRE, FLA.
CHOCTAWHATCHEE



#10
ALYSSA JEROME
F • 6-3 • SO
TORONTO, CANADA
HARBORD COLLEGIATE



#11
ALANNA SMITH
F • 6-4 • SR
MELBOURNE, AUSTRALIA
WESLEY COLLEGE



#12
LEXIE HULL
F • 6-0 • FR
SPOKANE, WASH.
CENTRAL VALLEY



#13
MARTA SNIEZEK
G • 5-8 • SR
MCLEAN, VA.
NATIONAL CATHEDRAL [D.C.]



#14
MIKAELA BREWER
G • 5-10 • JR
BARRIE, ONTARIO, CANADA
INNISDALE SECONDARY



#15
MAYA DODSON
F • 6-3 • SO
ALPHARETTA, GA.
ST. FRANCIS



#20
ESTELLA MOSCHKAU
F • 6-1 • SO
MADISON, WIS.
EDGEWOOD



#21
DIJONAI CARRINGTON
G • 5-11 • JR
SAN DIEGO, CALIF.
HORIZON CHRISTIAN



#23
KIANA WILLIAMS
G • 5-8 • SO
SAN ANTONIO, TEXAS
KAREN WAGNER



#24
LACIE HULL
F • 6-1 • FR
SPOKANE, WASH.
CENTRAL VALLEY



#54
JENNA BROWN
G • 5-10 • FR
ATLANTA, GA.
THE LOVETT SCHOOL



TARA VANDERVEER
HEAD COACH
33RD YEAR



KATE PAYE
ASSOCIATE HEAD COACH
12TH YEAR



TEMPIE BROWN
ASSISTANT COACH
SIXTH YEAR



LINDY LA ROCQUE
ASSISTANT COACH
SECOND YEAR