



No. 11 Stanford (18-3, 8-2) vs. No. 7 Oregon State (19-3, 9-1)

February 8, 2019 • Stanford, Calif. • Maples Pavilion • 6 p.m.

TV: Pac-12 Networks (Cindy Brunson/Mary Murphy) | Audio: GoStanford.com (Kevin Danna)

GOSTANFORD.COM • #GOSTANFORD



2018-19 SCHEDULE AND RESULTS

NOVEMBER

7	UC Davis	W, 71-43
11	Idaho	W, 115-71
15	San Francisco	W, 96-62
18	Ohio State (P12N)	canceled
23	vs. FGCU (1)	W, 88-65
24	vs. American (1)	W, 71-49
25	at Hawaii (1)	W, 81-59

DECEMBER

2	at Gonzaga	L, 73-79
15	#3/4 Baylor (P12N)	W, 68-63
18	at #9/8 Tennessee (SECN)	W, 95-85
21	at Buffalo (ESPN+)	W, 62-55
29	CSUN	W, 69-43

JANUARY

4	USC * (P12N)	W, 72-64
6	UCLA * (P12N)	W, 86-80
11	at #19/19 Arizona State * (P12N)	W, 72-65
13	at Arizona * (P12N)	W, 78-48
18	Washington * (P12N)	W, 91-54
20	Washington State * (P12N)	W, 85-64
25	at Colorado * (P12N)	W, 80-69
27	at #21/24 Utah *	L, 68-75
31	at California * (P12N)	L, 80-81

FEBRUARY

2	California * (P12N)	W, 75-50
8	#7/10 Oregon State * (P12N)	6 p.m.
10	#3/3 Oregon * (ESPN2)	1 p.m.
15	at UCLA * (P12N)	6 p.m.
17	at USC * (P12N)	noon
22	Arizona *	7 p.m.
24	Arizona State * (P12N)	1 p.m.

MARCH

1	at Washington State * (P12N)	7 p.m.
3	at Washington * (P12N)	2 p.m.
7-10	Pac-12 Tournament (2)	TBD

(1) - Rainbow Wahine Showdown; Honolulu, Hawaii

(2) - Pac-12 Tournament; Las Vegas, Nev.

* - Pac-12 game;

All times local and subject to change;

Home games in Bold;

[#/#] - Indicates national ranking (AP/USA Today)

(P12N) - Game televised on Pac-12 Networks

(ESPN2/SECN) - Game televised on ESPN family of networks

Athletic Communications

Director John Cantalupi
 Cell Phone (650) 924-8304
 E-Mail johncan@stanford.edu

THE GAME: Off to its best start since going to the Final Four in 2016-17, No. 11 Stanford (18-3, 8-2) hosts No. 7 Oregon State (19-3, 9-1) on Friday, Feb. 8 at 6 p.m. Cindy Brunson and Mary Murphy have the call on Pac-12 Networks and Kevin Danna will handle the radio broadcast on GoStanford.com.

THE RUNDOWN: Stanford has won 21 consecutive games at home, the sixth-longest active streak in the nation ... Tara VanDerveer won her 900th game at Stanford on Jan. 20 against Washington State, becoming the fifth DI coach, women's or men's, with that many at one school ... Alanna Smith is one of five players nationally shooting better than 45 percent both overall and from deep ... DiJonai Carrington's 33-point, 13-rebound, four 3-pointer effort against Tennessee was the second for a player in the past 20 years against a ranked opponent ... Stanford is one of four schools in the nation with a pair of top-10 wins ... The Cardinal is 18th in the country in scoring offense (79.8) and 19th in field goal percentage (.461) ... Alanna Smith is one of two players in the country averaging 20.0 points, 8.0 rebounds, 2.0 assists and 2.0 blocks per game ... DiJonai Carrington is averaging 16.3 points and 9.2 rebounds in the last 13 games with five double-doubles ... Alanna Smith is averaging 22.9 points, 9.7 rebounds and 3.0 blocks in the last 12 with six double-doubles ... Haley Jones, the nation's consensus No. 1 recruit, announced her commitment on Nov. 28, the first top player to sign with Stanford since Chiney Ogwumike in Nov. 2009 ... Stanford made 39.0 percent of its 3-pointers in the season's first 17 games, but has made just 27.3 percent in the last four.

STANFORD AT A GLANCE

Game 22

Overall Record	18-3
Pac-12 Record	8-2
Home Record	10-0
Road Record	6-3
Neutral Record	2-0

HEAD COACH TARA VANDERVEER

Stanford Record (33rd year)	902-194
Career Record (40th year)	1,054-245
All-Time vs. Oregon State	56-9

SERIES HISTORY

All-Time vs. Oregon State	56-9
At Stanford	29-1
At Oregon State	25-8
Streak	Stanford, 2
Last Stanford Win	2/2/18 (60-57 @ OSU)
Last Oregon State Win	2/24/17 (50-47 @ OSU)

VS. OREGON ST.: Stanford is 56-9 all-time against OSU and 29-1 at home. After the Cardinal won 29 in a row from 2001-15, the teams have split their last six meetings and the last four have been decided by a total of 14 points. Stanford has won two straight, 48-43 in the 2017 Pac-12 Tournament Championship and 60-57 in Corvallis last February. The Beavers won the most recent matchup in Maples, their first victory in the building, 72-69 in double overtime on Jan. 8, 2017. Friday will be the eighth consecutive meeting with both ranked in the top 25.

STANFORD PROBABLE STARTERS

No.	Player	Pos.	Ht.	Yr.	PPG	RPG	APG
11	Alanna Smith	F	6-4	Sr.	20.9	8.1	2.4 (BPG)
15	Maya Dodson	F	6-3	So.	8.9	4.2	1.7 (BPG)
21	DiJonai Carrington	G	5-11	Jr.	13.9	7.6	1.6
23	Kiana Williams	G	5-8	So.	14.6	2.5	4.9
24	Lacie Hull	G	6-1	Fr.	5.4	2.6	2.0

STANFORD OFF THE BENCH

No.	Player	Pos.	Ht.	Yr.	PPG	RPG	APG
2	Shannon Coffee	C	6-5	Sr.	1.5	1.5	0.9
3	Anna Wilson	G	5-9	Jr.	2.9	1.5	0.9
4	Nadia Fingall (OUT FOR SEASON)	F	6-3	Jr.	8.0	4.9	1.7
10	Alyssa Jerome	F	6-3	So.	3.6	3.0	0.8
12	Lexie Hull	G	6-0	Fr.	5.9	5.1	0.7
13	Marta Snizek	G	5-8	Sr.	--	--	--
14	Mikaela Brewer	G	5-10	Jr.	1.4	0.5	0.1
20	Estella Moschkau	G	6-1	So.	1.1	0.5	0.2
54	Jenna Brown	G	5-10	Fr.	2.1	1.2	1.0

QUICK FACTS

The University

Location Stanford, Calif.
 Founded..... 1891
 Enrollment..... 16,424 (7,056 undergraduate)
 Nickname..... Cardinal
 Colors..... Cardinal and White
 Affiliation NCAA Division I
 Conference Pac-12
 President Marc Tessier-Lavigne
 Provost..... Persis Drell
 Director of Athletics..... Bernard Muir
 Faculty Representative Jeff Koseff
 Senior Women's Administrator..... Beth Goode
 Athletic Department Phone 650-723-4591
 Ticket Office Phone 800-STANFORD
 Home Facility..... Maples Pavilion
 Capacity 7,233
 Web Site www.gostanford.com

Stanford Women's Basketball History

First Year 1974-75 (45 seasons)
 All-Time Record 1,078-332 (.765)
 All-Time Pac-12 (since 1986-87) 508-77 (.868)
 NCAA Championships 2 (1990, 1992)
 NCAA Tournament Appearances 32 (86-30)
 Last NCAA Tournament Appearance 2018
 NCAA Final Four Appearances 13
 Last NCAA Final Four Appearance 2017

Staff Information

Head Coach Tara VanDerveer (33rd season)
 Alma Mater Indiana, 1975
 Stanford Record 902-194/33 seasons
 Career Record..... 1,054-245/40 seasons
 Associate Head Coach..... Kate Paye (12th season)
 Alma Mater Stanford, 1995
 Assistant Coach Tempie Brown (sixth season)
 Alma Mater Michigan, 1990
 Assistant Coach Lindy La Rocque (second season)
 Alma Mater Stanford, 2012
 Operations..... Eileen Roche (Ohio Wesleyan '81)
 Administrator..... Amy Tucker (Ohio State, '82)
 Video Coordinator..... Hana Potter (Washington St. '14)
 Athletic Trainer..... Katelin Knox (Santa Clara '09)
 Sports Performance Brittany Keil (Holy Cross '07)
 Basketball Office Phone..... (650) 723-0284

Team Information

Letterwinners Returning/Lost12/2
 Starters Returning/Lost3/2
 Newcomers.....3
 2017-18 Record.....24-11
 Home14-2
 Away6-5
 Neutral.....4-4
 2017-18 Conference Record14-3
 Finish 2nd

NEWS AND NOTES »

- The Cardinal had its 11-game winning streak snapped on Jan. 27 at Utah. It was tied for the third-longest active streak in the nation.
- Coupled with its Jan. 31 loss at Cal, Stanford dropped two consecutive conference games for the first time since 2015.
- The Cardinal hasn't lost three consecutive games in the same season since 2000-01 when it dropped league contests to Arizona (68-65), Oregon State (81-65) and No. 20 Oregon (72-54) in mid-January.
- Stanford entered conference play with a 10-1 record (.909), the first time in five years it suffered just one nonconference defeat.
- The Cardinal's Nov. 18 home contest against Ohio State was canceled due to smoke from the devastating wildfires in Butte County that had compromised the air quality throughout the Bay Area.
- Stanford is currently No. 11 in the AP Top 25 and No. 5 in the NCAA RPI.
- Since 2007-08, the Cardinal owns a conference home record of 98-6 and a Pac-12 road record of 87-16.
- Stanford's 185 conference wins since 2007-08 are the most in the nation (Green Bay/UConn - 184).
- Stanford's all-time Pac-12 record is 508-77 and 150 wins clear of the next closest team (UW - 337).
- The Cardinal was 14-of-14 at the line in Jan. 11's 72-65 win over No. 19 Arizona State, a program record for makes without a miss from the stripe. Stanford had previously gone 13-for-13 against Seattle on Feb. 29, 2012 and Cal on Feb. 11, 2005.
- Stanford is a combined 90-of-114 (.789) on free throws in the last eight games. Prior to that, the Cardinal was shooting 67.0 percent from the line (150-of-224).
- Stanford leads the conference and is 21st in the country in blocks per game (5.1).
- Tara VanDerveer won her 900th game as head coach at Stanford on Jan. 20 against Washington State to become the fifth DI coach, women's or men's, with that many at a single school (Pat Summitt, Geno Auriemma, Mike Krzyzewski, Jim Boeheim).

HOME COOKIN' »

- Stanford is in the midst of an 21-game winning streak in Maples Pavilion, the sixth-longest active stretch in the country and the program's longest since it went 28 straight from Jan. 18, 2013 until an 87-81 overtime loss to No. 10 Texas on Nov. 20, 2014.
- Last season, the Cardinal was the only Pac-12 team undefeated at home in conference (9-0).
- Stanford has won 17 consecutive Pac-12 home games.
- Stanford's last home loss was to No. 7 Tennessee on Dec. 21, 2017 (83-71) and its last conference loss at home was to No. 15 UCLA on Feb. 6, 2017 (85-76).
- The Cardinal has won 24 in a row at home over unranked Pac-12 teams. Its last such loss was Feb. 22, 2015, when it was beaten by Cal, 63-53.

INJURY BUG »

- A number of players have missed significant stretches of time for Stanford.
- Junior Nadia Fingall, who had started each of the Cardinal's first 12 games and averaged 8.0 points and 4.9 rebounds, will miss the remainder of the season after tearing the ACL in her left knee in a game against USC on Jan. 4
- Senior Marta Sniezek has yet to play this year after undergoing offseason ulnar collateral ligament (UCL) surgery on her right hand/thumb. She started 32 games last season.
- Freshman Lexie Hull returned in Stanford's Jan. 6 win over UCLA after missing the previous nine games with a left foot injury. She had started the first three games of the year.

2018-19 STANFORD ROSTER

No.	Player	Pos.	Ht.	Yr.	Major	Hometown (High School)
2	Shannon Coffee	C	6-5	Sr.	Human Biology	Dayton, Ohio (Centerville)
3	Anna Wilson	G	5-9	Jr.	Art Practice	Seattle, Wash. (Bellevue)
4	Nadia Fingall	F	6-3	Jr.	Human Biology	Navarre, Fla. (Choctawhatchee)
10	Alyssa Jerome	F	6-3	So.	Undeclared	Toronto, Ontario, Canada (Harbord Collegiate)
11	Alanna Smith	F	6-4	Sr.	Psychology	Melbourne, Victoria, Australia (Wesley College)
12	Lexie Hull	F	6-0	Fr.	Undeclared	Spokane, Wash. (Central Valley)
13	Marta Sniezek	G	5-8	Sr.	American Studies	McLean, Va. (National Cathedral [D.C.])
14	Mikaela Brewer	G	5-10	Jr.	Human Biology	Barrie, Ontario, Canada (Innisdale Secondary)
15	Maya Dodson	F	6-3	So.	Undeclared	Alpharetta, Ga. (St. Francis)
20	Estella Moschkau	F	6-1	So.	Undeclared	Madison, Wis. (Edgewood)
21	DiJonai Carrington	G	5-11	Jr.	Psychology • African & African American Studies	San Diego, Calif. (Horizon Christian)
23	Kiana Williams	G	5-8	So.	Undeclared	San Antonio, Texas (Karen Wagner)
24	Lacie Hull	F	6-1	Fr.	Undeclared	Spokane, Wash. (Central Valley)
54	Jenna Brown	G	5-10	Fr.	Undeclared	Atlanta, Ga. (The Lovett School)

TEMPIE Brown (TEMP-ee)
DIJONAI Carrington (dijon-NAY)
 Nadia **FINGALL** (FING-gull)
 Estella **MOSCHKAU** (MOSS-cow)
ALANNA Smith (uh-LAN-uh)
 Marta **SNIEZEK** (SNEEZE-ick)
TARA VANDERVEER (TAR-uh van-DER-veer)

STANFORD'S RECORD WHEN

Category	H	R	N	O
Scoring First	6-0	6-1	1-0	13-1
Opponent Scores First	4-0	0-2	1-0	5-2
Lead at Half	8-0	5-0	2-0	15-0
Trail at Half	2-0	1-2	0-0	3-2
Tied at Half	0-0	0-1	0-0	0-1
Overtime	0-0	0-0	0-0	0-0
vs. Top 25	1-0	2-1	0-0	3-1
Decided by 1-4 Points	0-0	0-1	0-0	0-1
Decided by 5-9 Points	3-0	2-2	0-0	5-2
Decided by 10+ Points	7-0	4-0	2-0	13-0
Scoring 100+	1-0	0-0	0-0	1-0
Scoring 90-99	2-0	1-0	0-0	3-0
Scoring 80-89	2-0	2-1	1-0	5-1
Scoring 70-79	3-0	2-1	1-0	6-1
Scoring 60-69	2-0	1-1	0-0	3-1
Scoring 50-59	0-0	0-0	0-0	0-0
Scoring 40-49	0-0	0-0	0-0	0-0
Opp. Scoring 90-99	0-0	0-0	0-0	0-0
Opp. Scoring 80-89	1-0	1-1	0-0	2-1
Opp. Scoring 70-79	1-0	0-2	0-0	1-2
Opp. Scoring 60-69	4-0	2-0	1-0	7-0
Opp. Scoring 50-59	2-0	2-0	0-0	4-0
Opp. 49 or Fewer	2-0	1-0	1-0	4-0
50%-plus FG Pct.	3-0	3-0	1-0	7-0
40-49.9% FG Pct.	6-0	2-2	1-0	9-2
39.9%-minus FG Pct.	1-0	1-1	0-0	2-1
Opp. 50%-plus FG Pct.	0-0	0-1	0-0	0-1
Opp. 40-49.9% FG Pct.	2-0	2-2	0-0	4-2
Opp. 39.9%-minus	8-0	4-0	2-0	14-0
Better FG% than Opp.	10-0	6-1	2-0	18-1
FG% is Equal	0-0	0-0	0-0	0-0
Opp. Better FG%	0-0	0-2	0-0	0-2
80%-plus FT Pct.	3-0	3-0	0-0	6-0
70-79% FT Pct.	2-0	3-0	1-0	6-0
69%-minus FT Pct.	5-0	0-3	1-0	6-3
Better FT% than Opp.	8-0	4-0	0-0	12-0
FT% is Equal	0-0	0-0	0-0	0-0
Opp. Better FT%	2-0	2-3	2-0	6-3
Outrebounding Opp.	6-0	4-0	2-0	12-0
Rebounds are Equal	0-0	0-2	0-0	0-2
Outrebounded by Opp.	4-0	2-1	0-0	6-1
Fewer TO than Opp.	7-0	2-2	1-0	10-2
Turnovers are Equal	0-0	0-1	0-0	0-1
More TO than Opp.	3-0	4-0	1-0	8-0
6 in Double Figures	1-0	0-0	0-0	1-0
5 in Double Figures	0-0	1-0	0-0	1-0
4 in Double Figures	1-0	0-1	0-0	1-1
3 in Double Figures	8-0	3-1	2-0	13-1
2 in Double Figures	0-0	2-1	0-0	2-1
1 in Double Figures	0-0	0-0	0-0	0-0
Bench Scores More	3-0	5-1	1-0	9-1
Opp. Bench Scrs. More	4-0	1-1	1-0	6-1
Wearing Black	0-0	3-2	1-0	4-2
Wearing White	9-0	0-0	1-0	10-0
Wearing Cardinal	0-0	3-1	0-0	3-1

- Sophomore Maya Dodson, arguably one of the conference's most improved players, returned to the lineup at Cal on Jan. 31 after missing the previous eight games with a left foot injury.

MARKED OFFENSIVE IMPROVEMENT »

- The Cardinal is 18th in the country in scoring offense (79.8) and 17th in scoring margin (+16.8).
- Stanford hasn't averaged more than 75.0 points per game since 2013-14 and has averaged 68.7 (2017-18), 68.8 (2015-16) and 69.3 (2014-15) in three of the last four years. Those are three of the five lowest scoring offenses for a Tara VanDerveer team at Stanford, behind 1985-86 (66.6) and 1986-87 (67.8).
- Stanford is 19th nationally in field goal percentage (.461) and 17th in assist-to-turnover ratio (1.27).
- Those categories are just a couple of many where the Cardinal has seen a marked improvement year-over-year. Last season, Stanford was 87th in field goal percentage (.424) and 126th in assist-to-turnover ratio (0.93).

SHARP SHOOTERS OFF OF LATE »

- Stanford is 16th in the country, averaging 9.4 3-point makes per game and 27th in 3-point percentage, making 36.8 percent.
- Over the season's first 17 games, the Cardinal was making 39 percent of its 3-pointers (171-of-439) and an average of 10.1 per game. In the last four it has seen those numbers dip to 27.3 percent (27-of-99) and 6.75 per game.
- Stanford struggled to make 3-pointers and defend the 3-point line in its last three road games at Colorado, Utah and Cal. The Cardinal was outscored by 48 points from behind the arc (105-57) and was 19-of-79 from deep (.241) in those games while its opponents were a combined 35-of-82 (.427).
- Stanford righted the ship upon returning home to beat Cal on Feb. 2, holding the Bears to 3-of-17 (.176) from deep while going 8-of-20 (.400) itself.
- Stanford's 16 3-pointers on Nov. 11 against Idaho tied a program single-game record also achieved at UCLA on Feb. 24, 2002 and at Washington on Feb. 24, 2001.
- Entering the season, Stanford had made 14 3-pointers in a game 16 times in 1,389 games (1.2 percent). This year's Cardinal has done it three times in 21 games against Idaho (16), San Francisco (15) and Tennessee (14).
- The Cardinal made 31.9 percent of its attempts from behind the arc last season, the second-worst percentage in program history. Stanford also was a program-low 42.4 percent from the floor overall in 2017-18.
- Stanford won that game against Idaho 115-71, its fifth-highest point total ever and most since tying a school record with 122 against Cal State Fullerton on Dec. 10, 1994.

FROM DOWN UNDER »

- Alanna Smith remains on every major watch list, including the Naismith Trophy, Wade Trophy, John R. Wooden Award, Katrina McClain Award and Senior CLASS Award.
- A two-time Pac-12 Player of the Week this season (Dec. 17 and Jan. 14) and the espnW and USBWA National Player of the Week from Dec. 17, Smith is shooting 53.6 percent from the field (163-of-304), 45.0 percent from behind the arc (54-of-120) and averaging a team-high 20.9 points per game to go with 8.1 rebounds.
- She is one of five players in the nation shooting better than 45 percent both overall and from deep (Marina Mabrey - Notre Dame; Dee Givens - Western Kentucky; Marta Gomez - Wyoming; Savannah Jones - South Alabama).
- Elena Delle Donne is the only player 6'4" and taller over the past two decades to shoot better than 40 percent from 3-point range when she made 41.3 percent as a freshman at Delaware in 2009-10 (NCAA minimum of two made 3-pointers per game).
- Smith, who has double-doubles in six of her last 12 games, is one of two players in the country averaging 20.0 points, 8.0 rebounds, 2.0 assists and 2.0 blocks per game this season (Bella Alarie - Princeton).
- Smith is third in the conference and 42nd in the country in field goal percentage, second in the Pac-12 and 14th in the country in 3-point percentage, third in the league and 12th nationally in scoring and first in the conference and 19th in the country in blocks per game.
- She is 20th in school history in scoring (1,443) and fifth in blocks (197).
- Smith is within range of joining an elite company of players that have put together careers of 1,600 points, 150 made 3-pointers and 200 blocks. Since 1999-00, the only three to do that are Elena Delle Donne (3,039 points; 206 3-pointers; 273 blocks), Maya Moore (3,036 points; 311 3-pointers; 204 blocks) and Breanna Stewart (2,676 points; 152 3-pointers; 414 blocks).
- The senior had 30 points, 13 rebounds five assists and three blocks in a 62-55 win at Buffalo on Dec. 21 to become just the fourth player since 2000 to put together a line of 30/13/5/3 in a true road game.
- Jennie Simms had 41/13/6/3 for Old Dominion against Florida Atlantic on Feb. 4, 2017, Jerica Coley had 30/14/5/4 for FIU against South Florida on March 17, 2012 and Jessica Davenport had 34/16/6/3 for Ohio State against Iowa on Jan. 12, 2006.

VANDERVEER'S HEAD COACHING CAREER

Year	School	Overall	Post.
1978-79	Idaho	17-8	
1979-80	Idaho	25-6	AIAW Championships
1980-81	Ohio State	17-15	---
1981-82	Ohio State	20-7	NCAA First Round
1982-83	Ohio State	23-5	---
1983-84	Ohio State	22-7	NCAA First Round
1984-85	Ohio State	28-3	NCAA Elite 8
1985-86	Stanford	13-15	---
1986-87	Stanford	14-14	---
1987-88	Stanford	27-5	NCAA Sweet 16
1988-89	Stanford	28-3	NCAA Elite 8
1989-90	Stanford	32-1	NCAA Champions
1990-91	Stanford	26-6	NCAA Final Four
1991-92	Stanford	30-3	NCAA Champions
1992-93	Stanford	26-6	NCAA Sweet 16
1993-94	Stanford	25-6	NCAA Elite 8
1994-95	Stanford	30-3	NCAA Final Four
1995-96	Stanford	---	USA Head Coach
1996-97	Stanford	34-2	NCAA Final Four
1997-98	Stanford	21-6	NCAA First Round
1998-99	Stanford	18-12	NCAA First Round
1999-00	Stanford	21-9	NCAA Second Round
2000-01	Stanford	19-11	NCAA Second Round
2001-02	Stanford	32-3	NCAA Sweet 16
2002-03	Stanford	27-5	NCAA Second Round
2003-04	Stanford	27-7	NCAA Elite 8
2004-05	Stanford	32-3	NCAA Elite 8
2005-06	Stanford	26-8	NCAA Elite 8
2006-07	Stanford	29-5	NCAA Second Round
2007-08	Stanford	35-4	NCAA Runner-Up
2008-09	Stanford	33-5	NCAA Final Four
2009-10	Stanford	36-2	NCAA Runner-Up
2010-11	Stanford	33-3	NCAA Final Four
2011-12	Stanford	35-2	NCAA Final Four
2012-13	Stanford	33-3	NCAA Sweet 16
2013-14	Stanford	33-4	NCAA Final Four
2014-15	Stanford	26-10	NCAA Sweet 16
2015-16	Stanford	27-8	NCAA Elite 8
2016-17	Stanford	32-6	NCAA Final Four
2017-18	Stanford	24-11	NCAA Sweet 16
2018-19	Stanford	18-3	

1,054-245**COACHING HIGHLIGHTS**

- The second-winningest coach in women's college basketball history and was the second to reach 1,000 career wins (Feb. 3, 2017 vs. USC).
- Possesses the sixth-highest career winning percentage (.811) among Division I women's basketball coaches all-time.

HONORS AND AWARDS

- Naismith Memorial Basketball Hall of Fame ('11)
- Women's Basketball Hall of Fame ('02)
- Two NCAA Championships (1990, 1992)
- Head of the 1996 U.S. Olympic Team (Gold)
- 60-0 record with USA Olympic Team in 1995-96
- 88-8 record (.917) as USA Basketball Head Coach
- 12 NCAA Final Fours
- 22 regular-season Pac-12 titles
- Four-time National Coach of the Year
- 15-time Pac-12 Coach of the Year
- Two-time Big Ten Coach of the Year

WATCH WILLIAMS »

- Kiana Williams is also on watch lists for the Naismith Trophy and Ann Meyers Drysdale Award.
- The sophomore is second on the team in scoring (14.6 points per game) and four of her five 20-point games this season have come in conference.
- Williams had her first career double-double with 21 points and 10 assists in the Jan. 6 win against UCLA. It was Stanford's first 20-point, 10-assist double-double since Jeanette Pohlen had 21 and 12 in a win over USC on Jan. 22, 2011.
- It was also the Cardinal's first individual 10-assist effort since Marta Snizek had that many in the 2016-17 season opener against Cal Poly on Nov. 11, 2016.
- Williams is also averaging 4.9 assists per game, which is seventh in the conference. No Stanford player has averaged 4.5 assists in a season since Jeanette Pohlen in 2010-11 (4.8) and no one has averaged 5.0 since Nicole Powell in 2001-02 (6.3).

CARRINGTON CLUTCH »

- DiJonai Carrington has pulled down 10 or more rebounds in seven of the last 13 games and is averaging 16.3 points and 9.2 rebounds in those 13 with five double-doubles.
- She is one of four Power 5 conference players in the country under 6'0" averaging 13.0 points and 7.0 rebounds along with Sabrina Ionescu (Oregon), Anriel Howard (Mississippi State) and Mikayla Pivec (Oregon State).

RECORDS SET ON ROCKY TOP »

- On the 30th anniversary of the first meeting in their storied rivalry, Stanford went on the road and beat then-No. 9 Tennessee in Knoxville, 95-85, on Dec. 18.
- In the first top-10 matchup between the schools since 2013, the Cardinal collected its third win against the Lady Vols in Thompson-Boling Arena. Its previous road victories in Knoxville came on Dec. 22, 2012 (73-60) and Dec. 15, 1996 (82-65).
- Stanford shot 14-of-24 (.583) from 3-point range, an opponent record for Thompson-Boling Arena and a record-tying number of makes from deep against the Lady Vols all-time.
- The Cardinal's 95 points were the most against Tennessee in Knoxville in 13 seasons and just two shy of the opponent record in Thompson-Boling Arena. Texas beat the Lady Vols 97-78 on Dec. 9, 1987.
- Stanford shot 55 percent overall (33-of-60) to score its 95 points, a program record for scoring on the road against a top-10 team.
- DiJonai Carrington led five Cardinal in double figures with a career-high 33 points and 13-rebounds for her third career double-double. Carrington was 11-of-15 (.733) from the floor and 4-of-5 (.800) from deep and became just the second player in the last 20 years to have 33 points, 13 rebounds and four made 3-pointers against a ranked opponent. Missouri's Evan Unrau had 40/15/4 against No. 8 Kansas State on Feb. 22, 2014, a game that went into double-overtime.

RESUME BUILDERS »

- Coupled with a Dec. 15 68-63 home victory over then-No. 3 Baylor, Stanford beat a pair of top-10 teams in the span of four days, something it last did eight years ago when it beat No. 4 Xavier, 89-52, on Dec. 28, 2010 and No. 1 UConn, 71-59, on Dec. 30, 2010 to end the Huskies' then-record 90-game winning streak. Both of those victories were at home.
- Stanford, Notre Dame, Michigan State and North Carolina are the only schools in the nation with a pair of top-10 wins.

VANDERVEER'S CAREER MILESTONES

Win #1	Dec. 1, 1978 Idaho vs. Northern Montana, 70-68	Win #1 at Stanford	Nov. 22, 1985 vs. Hawaii, 68-65
Win #100	Feb. 27, 1983 Ohio State vs. Michigan, 74-60	Win #100 at Stanford	Jan. 27, 1990 vs. Arizona State, 90-63
Win #200	Feb. 12, 1988 Stanford vs. Washington, 70-66	Win #200 at Stanford	Dec. 18, 1993 vs. SW Missouri St., 74-63
Win #300	Dec. 20, 1991 Stanford vs. Southern Illinois, 82-63	Win #300 at Stanford	Feb. 14, 1998 vs. USC, 91-63
Win #400	March 16, 1995 Stanford vs. UC Irvine (NCAA), 88-55	Win #400 at Stanford	Nov. 30, 2002 vs. Kansas State, 63-57
Win #500	Nov. 26, 2000 Stanford vs. Pacific, 73-65	Win #500 at Stanford	Feb. 11, 2006 at California, 55-46
Win #600	March 20, 2004 Stanford vs. Missouri, 68-44	Win #600 at Stanford	March 14, 2009 vs. UCLA, 73-47 (at Los Angeles, Calif.)
Win #700	Dec. 28, 2007 Stanford vs. Washington State, 105-47	Win #700 at Stanford	Feb. 25, 2012 vs. Utah, 69-42
Win #800	Dec. 22, 2010 Stanford at San Francisco, 100-45	Win #800 at Stanford	March 21, 2015 vs. CSUN, 73-60
Win #900	Nov. 27, 2013 Stanford vs. FGCU, 83-59 (Puerto Vallarta, Mexico)	Win #900 at Stanford	January 20, 2019 vs. Washington State, 85-64
Win #1,000	Feb. 3, 2017 Stanford vs. USC, 58-42		

IN THE POLLS

ASSOCIATED PRESS TOP 25
(Released February 4)

School	Record	Points
1 Baylor (25)	19-1	697
2 Louisville (3)	21-1	668
3 Oregon	21-1	632
4 Notre Dame	21-2	608
5 Connecticut	19-2	596
6 Mississippi State	21-1	578
7 Oregon State	19-3	513
8 Marquette	19-3	483
9 North Carolina State	21-1	470
10 Maryland	19-2	459
11 Stanford	18-3	447
12 South Carolina	16-5	352
13 Gonzaga	21-2	316
14 Texas	18-4	313
15 Syracuse	17-4	303
16 Iowa	17-5	279
17 Utah	18-3	209
18 Texas A&M	18-4	206
19 Kentucky	18-5	173
20 Rutgers	17-5	160
20 Arizona State	15-6	160
22 Iowa State	17-5	150
23 Michigan State	16-5	130
24 Florida State	19-3	111
25 Miami (FL)	19-5	20

OTHERS RECEIVING VOTES: South Dakota 17; North Carolina 13; UCF 10; Missouri 7; West Virginia 5; New Mexico 4; Drake 3; California 2; Minnesota 2; Rice 1; BYU 1; Central Michigan 1.

USA TODAY COACHES TOP 25
(Released February 5)

School	Record	Points
1 Baylor (27)	20-1	794
2 Louisville (3)	21-1	763
3 Oregon (1)	21-1	711
4 Notre Dame (1)	21-2	702
5 Connecticut	19-2	688
6 Mississippi State	21-1	661
7 Marquette	19-3	556
8 Maryland	20-2	553
9 North Carolina State	21-1	527
10 Oregon State	19-3	519
11 Stanford	18-3	478
12 Gonzaga	21-2	411
13 South Carolina	16-5	350
14 Syracuse	17-4	348
15 Texas	18-5	331
16 Iowa	17-5	322
17 Kentucky	18-5	246
18 Arizona State	15-6	238
19 Florida State	19-3	218
20 Utah	18-3	196
21 Michigan State	16-5	179
22 Texas A&M	18-4	168
23 Iowa State	17-5	131
24 Rutgers	17-5	126
25 Miami (FL)	19-5	76

OTHERS RECEIVING VOTES: South Dakota 22; New Mexico 18; UCF 16; California 15; North Carolina 12; Drake 11; Missouri 8; DePaul 3; West Virginia 2; South Alabama 1.

- The win against the Lady Bears was the Cardinal's first in the regular season against a top-five team since it ended No. 1 UConn's 47-game winning streak in overtime, 88-86, on Nov. 17, 2014.
- Stanford is now 9-1 in its last 10 home game against top-five opponents.
- The 6-foot-5 Shannon Coffee set season highs with nine points and 19 minutes and made three of her four 3-point attempts against Baylor. The senior has made 12 from deep in her career and seven have come against Baylor. She was 4-of-8 last season in an 81-57 loss in Waco.
- Coupled with Alanna Smith's 5-of-9 effort from behind the arc, the Cardinal's two tallest players were a combined 8-of-13 (.615) from distance.
- Baylor, which entered the game leading the nation in field goal percentage (.557), shot just 34.9 percent (22-of-63) against the Cardinal, its lowest since losing 88-69 to Notre Dame in the Elite Eight on March 31, 2014 (.338).
- Kalani Brown (16.4 ppg) and Lauren Cox (12.3 ppg), who came in averaging nearly 30 combined points per game, together went for just seven points on just 3-of-11 shooting (.273). Brown came into the day leading the NCAA's active players in field goal percentage (.648) made only two of her seven attempts from the floor, the third-lowest percentage of her career when attempting at least five shots.

FOUR TO THE FARM »

- Stanford bolstered an already strong recruiting class for next season with the addition of the nation's consensus No. 1 recruit, Haley Jones (Santa Cruz, Calif./Archbishop Mitty), who committed on Nov. 28.
- Jones joined the earlier signings of top-50, five-star talents Fran Belibi (Aurora, Colo./Regis Jesuit), Hannah Jump (Los Altos Hills, Calif./Pinewood School) and Ashten Prechtel (Colorado Springs, Colo./Discovery Canyon) in Stanford's class, which is ranked second nationally by espnW HoopGurlz.
- Jones is the first No. 1 prospect to sign with Stanford since Chiney Ogwumike came to The Farm as the top player in the country in Nov. 2009.
- Belibi, Jones and Prechtel are on the West Team for the 2019 McDonald's All American Game on March 27. Of Stanford's 24 McDonald's All-Americans all-time, nine will be on the team together next season.

STANFORD BY THE NUMBERS

DOUBLE-DOUBLES	2018-19	CAREER	LED IN REBOUNDING (+TIES)	2018-19	CAREER
Alanna Smith	6	16	Alanna Smith	12	29
DiJonai Carrington	5	7	DiJonai Carrington	6	14
Lexie Hull	1	1	Nadia Fingall	2	7
Kiana Williams	1	1	Marta Sniezek	0	4
			Lacie Hull	1	1
			Lexie Hull	1	1
			Kiana Williams	0	1

DOUBLE-FIGURE POINTS	2018-19	CAREER	LED IN ASSISTS (+TIES)	2018-19	CAREER
Alanna Smith	20	65	Marta Sniezek	0	61
Kiana Williams	16	35	Kiana Williams	16	22
DiJonai Carrington	16	29	DiJonai Carrington	3	8
Nadia Fingall	4	15	Nadia Fingall	1	3
Marta Sniezek	0	9	Alanna Smith	1	2
Anna Wilson	1	4	Anna Wilson	1	2
Shannon Coffee	0	2	Jenna Brown	1	1
Maya Dodson	5	7	Shannon Coffee	1	1
Lexie Hull	3	3	Maya Dodson	1	1
Lacie Hull	2	2	Lacie Hull	1	1
			Alyssa Jerome	0	1

20-PLUS POINTS GAMES	2018-19	CAREER
Alanna Smith	10	19
Kiana Williams	5	8
DiJonai Carrington	3	5
Nadia Fingall	1	1
Anna Wilson	0	1

DOUBLE-FIGURE REBOUNDS	2018-19	CAREER
Alanna Smith	7	19
DiJonai Carrington	6	8
Lexie Hull	1	1
Marta Sniezek	0	1

DOUBLE-FIGURE ASSISTS	2018-19	CAREER
Marta Sniezek	0	2
Kiana Williams	1	1

LED TEAM IN SCORING (+TIES)	2018-19	CAREER
Alanna Smith	12	32
Kiana Williams	5	13
DiJonai Carrington	3	8
Shannon Coffee	0	2
Maya Dodson	1	1
Nadia Fingall	1	1

STANFORD SUPERLATIVES

Points 34, A. Smith vs. Washington State
 Field Goals Made 13, A. Smith vs. Washington State
 Field Goal Att. 22, A. Smith at Cal
 22, A. Smith at Buffalo
 3-Point FG Made 5, A. Smith vs. Baylor
 5, K. Williams vs. FGCU
 5, A. Smith vs. San Francisco
 5, Lexie Hull vs. Idaho
 3-Point FG Att..... 11, K. Williams vs. USC
 Free Throws Made 12, D. Carrington vs. FGCU
 Free Throw Att. 15, D. Carrington vs. FGCU
 Rebounds..... 15 A. Smith vs. Washington State
 Assists 10, K. Williams vs. UCLA
 Steals 7, Lacie Hull vs. American
 Blocked Shots..... 7, A. Smith at Arizona

THE LAST TIME STANFORD**BEAT A NO. 1 TEAM:**

11/17/14 vs. No. 1 Connecticut (88-86 [OT])

BEAT A TOP 25 TEAM:

1/11/19 at No. 19 Arizona State (72-65)

BEAT A TOP 5 TEAM:

12/15/18 vs. No. 3 Baylor (68-63)

BEAT A TOP 25 TEAM ON THE ROAD:

1/11/19 at No. 19 Arizona State (72-65)

SCORED 100+ POINTS:

11/11/18 vs. Idaho (115)

ALLOWED 100+ POINTS:

12/27/00 at Oklahoma (102)

SCORED FEWER THAN 50 POINTS:

3/5/17 vs. Oregon State (48)

ALLOWED FEWER THAN 50 POINTS:

1/13/19 at Arizona (48)

SCORED FEWER THAN 40 POINTS:

1/24/16 at UCLA (36)

ALLOWED FEWER THAN 40 POINTS:

12/16/17 vs. UNLV (33)

SHOT 60+ PERCENT:

11/25/16 vs. Wichita State (.623)

OPPONENT SHOT 59+ PERCENT:

12/16/10 at DePaul (.596)

SHOT LESS THAN 30 PERCENT:

12/3/17 at Baylor (.294)

OPPONENT SHOT LESS THAN 30 PERCENT:

2/2/19 at Arizona (.267)

FIVE CARDINAL IN DOUBLE-FIGURES:

12/18/18 at Tennessee

(D. Carrington 33, A. Smith 16, K. Williams 16,

Lacie Hull 14, M. Dodson 10)

TWO PLAYERS WITH 20+ POINTS:

1/31/19 at Cal

(DiJonai Carrington 23, Alanna Smith 21)

THREE PLAYERS WITH 20+ POINTS:

1/6/19 vs. UCLA

(D. Carrington 30, A. Smith 24, K. Williams 21)

PLAYER SCORED 40+ POINTS:

12/20/11, Nnemkadi Ogumike vs. Tennessee (42)

PLAYER SCORED 30+ POINTS:

1/20/19, Alanna Smith vs. Washington State (34)

PLAYER MADE 10+ FIELD GOALS:

1/20/19, Alanna Smith vs. Washington State (13)

PLAYER MADE 5+ 3-POINTERS:

12/15/18, Alanna Smith vs. Baylor (5)

PLAYER MADE 10+ FREE THROWS:

11/23/18, DiJonai Carrington vs. FGCU (12)

PLAYER HAD 10+ ASSISTS:

1/6/19, Kiana Williams vs. UCLA (10)

PLAYER HAD 15+ REBOUNDS:

1/20/19, Alanna Smith vs. Washington State (15)

PLAYER HAD 5+ BLOCKED SHOTS:

1/25/19, Alanna Smith at Colorado (5)

PLAYER HAD 5+ STEALS:

11/24/18, Lacie Hull vs. American (7)

PLAYER HAD A DOUBLE-DOUBLE:

1/31/19, DiJonai Carrington at Cal (23 pts, 12 reb)

TWO PLAYERS HAD A DOUBLE-DOUBLE:

1/18/19, Alanna Smith (27 pts, 13 reb) and

DiJonai Carrington (12 pts, 11 reb) vs. Washington

PLAYER HAD A TRIPLE-DOUBLE:

3/18/02, N. Powell vs. Tulane (16 pts, 10 reb, 10 ast)

STANFORD HIGHS/LOWS

Most Points	115 vs. Idaho (11/11/18)
Fewest Points	62 at Buffalo (12/21/18)
Most 1st Quarter Points.....	29 vs. Washington State (1/20/19)
Fewest 1st Quarter Points.....	12 at Utah (1/27/19)
Most 2nd Quarter Points	28 vs. Idaho (11/11/18)
Fewest 2nd Quarter Points	11 at Buffalo (12/21/18)
Most 3rd Quarter Points	40 vs. Idaho (11/11/18)
Fewest 3rd Quarter Points	9 at Gonzaga (12/2/18)
Most 4th Quarter Points	32 at Gonzaga (12/2/18)
Fewest 4th Quarter Points	10, two times [last vs. Washington State (1/20/19)]
Best FG Pct.....	56.6% (30-of-53) at Hawaii (11/25/18)
Worst FG Pct.....	38.3% (23-of-60) vs. Baylor (12/15/18)
Most 3-Pt. FGs Made.....	16 vs. Idaho (11/11/18)
Fewest 3-Pt. FGs Made	5, three times [last at Cal (1/31/19)]
Most 3-Pt. FGs Attempted	41 vs. Idaho (11/11/18)
Fewest 3-Pt. FGs Attempted.....	20, two times [last vs. Cal (2/2/19)]
Best 3-Pt. FG Pct. (min. five attempts).....	58.3% (14-of-24) at Tennessee (12/18/18)
Worst 3-Pt. FG Pct.....	21.4% (6-of-28) at Colorado (1/25/19)
Most Free Throws Made	18 at Colorado (1/25/19)
Fewest Free Throws Made.....	4, two times [last vs. Washington (1/18/19)]
Most Free Throws Attempted.....	26 vs. FGCU (11/23/18)
Fewest Free Throws Attempted	5 vs. Washington (1/18/19)
Best Free Throw Pct. (min. five attempts)	100.0% (14-of-14) at Arizona State (1/11/19)
Worst Free Throw Pct.	42.9% (9-of-21) vs. Baylor (12/15/18)
Most Rebounds.....	53 vs. CSUN (12/29/18)
Fewest Rebounds	24 at Gonzaga (12/2/18)
Best Rebound Margin.....	+29 vs. Idaho (11/11/18)
Worst Rebound Margin.....	-14 at Gonzaga (12/2/18)
Most Assists	26 vs. Idaho (11/11/18)
Fewest Assists.....	10 vs. UC Davis (11/7/18)
Most Turnovers.....	21 vs. UC Davis (11/7/18)
Fewest Turnovers	6, two times [last at Cal (1/31/19)]
Best Turnover Margin.....	+9, two times [last at Colorado (1/25/19)]
Worst Turnover Margin.....	-12 at Tennessee (12/18/18)
Most Blocked Shots	11 vs. San Francisco (11/15/18)
Fewest Blocked Shots	0 at Cal (1/31/19)
Most Steals.....	13 at Hawaii (11/25/18)
Fewest Steals	3, three times [last at Utah (1/27/19)]

OPPONENT HIGHS/LOWS

Most Points	85 by Tennessee (12/18/18)
Fewest Points	43, two times [last by CSUN (12/29/18)]
Most 1st Quarter Points.....	24 by UCLA (1/6/19)
Fewest 1st Quarter Points.....	4 by CSUN (12/29/18)
Most 2nd Quarter Points	22 by FGCU (11/23/18)
Fewest 2nd Quarter Points	4 by Arizona (1/13/19)
Most 3rd Quarter Points	25, two times [last by Arizona State (1/11/19)]
Fewest 3rd Quarter Points	10 vs. UC Davis (11/7/18)
Most 4th Quarter Points	23, two times [last by UCLA (1/6/19)]
Fewest 4th Quarter Points	9 vs. UC Davis (11/7/18)
Best FG Pct.....	54.2% (26-of-48) by Gonzaga (12/2/18)
Worst FG Pct.....	22.6% (14-of-62) by UC Davis (11/7/18)
Most 3-Pt. FGs Made.....	15 by Idaho (11/11/18)
Fewest 3-Pt. FGs Made	3, three times [last by Cal (2/2/19)]
Most 3-Pt. FGs Attempted	38 by FGCU (11/23/18)
Fewest 3-Pt. FGs Attempted.....	7 by Baylor (12/15/18)
Most FTs Made	19 by Gonzaga (12/2/18)
Fewest FTs Made	2 by Hawaii (11/25/18)
Most FTs Attempted.....	25 by Cal (2/2/19)
Fewest FTs Attempted	2 by Hawaii (11/25/18)
Most Rebounds	44, two times [last by Colorado (1/25/19)]
Fewest Rebounds	20, two times [last by FGCU (11/23/18)]
Most Assists	17 by Hawaii (11/25/18)
Fewest Assists.....	2 by Cal (2/2/19)
Most Turnovers.....	23 by Gonzaga (12/2/18)
Fewest Turnovers	8 by Tennessee (12/18/18)
Best Turnover Margin.....	+12 by Tennessee (12/18/18)
Worst Turnover Margin.....	-9, two times [last by Colorado (1/25/19)]
Most Blocked Shots.....	6, two times [last by Colorado (1/25/19)]
Fewest Blocked Shots	0, four times [last by Buffalo (12/21/18)]
Most Steals.....	13 by UC Davis (11/7/18)
Fewest Steals	2 by Cal (1/31/19)

STANFORD RECORDS

CAREER SCORING

No.	Player	PTS
1.	Chiney Ogwumike (2011-14)	2,737
2.	Candice Wiggins (2005-08)	2,629
3.	Nnemkadi Ogwumike (2009-12)	2,491
4.	Kate Starbird (1994-97)	2,215
5.	Jayne Appel (2007-10)	2,125
6.	Val Whiting (1990-93)	2,077
7.	Nicole Powell (2001-04)	2,062
8.	Jeanne Ruark Hoff (1979-83)	2,038
9.	Kayla Pedersen (2008-11)	1,941
10.	Trisha Stevens (1988-91)	1,649
11.	Jennifer Azzi (1987-90)	1,634
12.	Katy Steding (1987-90)	1,586
13.	Olympia Scott (1995-98)	1,524
14.	Brooke Smith (2005-07)	1,520
15.	Anita Kaplan (1992-95)	1,509
16.	Lindsey Yamasaki (1999-2002)	1,497
17.	Jeanette Pohlen (2008-11)	1,453
18.	Virginia Sourlis (1983-86)	1,449
19.	Sonja Henning (1988-91)	1,445
20.	ALANNA SMITH (2016-19)	1,443
21.	Amber Orrange (2012-15)	1,426
22.	Louise Smith (1979-82)	1,414
23.	Christy Hedgpeth (1991-94)	1,387
24.	Erica McCall (2014-17)	1,376
25.	Kelley Suminski (2002-05)	1,364
26.	Meg Metzger (1980-83)	1,360
27.	Rachel Hemmer (1992-95)	1,289
28.	Vanessa Nygaard (1994-98)	1,279
29.	Julie Zeilstra (1989-91)	1,259
30.	Brittany McPhee (2015-18)	1,250
	Lili Thompson (2014-16)	1,250
32.	Maggie Nelson (1975-78)	1,180
33.	Karlie Samuelson (2014-17)	1,164
34.	Kami Anderson (1985-88)	1,141
35.	Jill Yanke (1986-89)	1,134
36.	Jillian Harmon (2006-09)	1,096
37.	Joslyn Tinkle (2010-13)	1,091
38.	Molly Goodenbour (1990-93)	1,040
39.	Angie Paccione (1979-83)	1,013
40.	Bethany Donaphin (1999-02)	1,010

CAREER BLOCKS

No.	Player	BLKS
1.	Jayne Appel (2007-10)	273
2.	Chiney Ogwumike (2011-14)	202
3.	Val Whiting (1990-93)	201
4.	Erica McCall (2014-17)	200
5.	ALANNA SMITH (2016-19)	197
6.	Kaylee Johnson (2015-18)	166
7.	Kristen Newlin (2004-07)	163
8.	Joslyn Tinkle (2010-13)	150
9.	Bethany Donaphin (1999-2002)	136
	Cori Enghusen (1999-2002)	136

CAREER ASSISTS

No.	Player	ASTS
1.	Sonja Henning (1988-91)	757
2.	Jennifer Azzi (1987-90)	751
3.	Milena Flores (1997-2000)	644
4.	Jamila Wideman (1994-97)	585
5.	Nicole Powell (2001-04)	577
6.	Jeanette Pohlen (2008-11)	560
7.	Amber Orrange (2012-15)	552
8.	Virginia Sourlis (1983-86)	483
9.	Molly Goodenbour (1990-93)	441
10.	Kate Starbird (1994-97)	437
11.	Candice Wiggins (2005-08)	436
	MARTA SNIEZEK (2016-19)	428

SINGLE-GAME STEALS

No.	Player	STLS
1.	Katy Steding at Northwestern (12/3/88)	10
2.	Milena Flores vs. Saint Mary's (12/27/99)	9
3.	Jennifer Azzi vs. North Carolina State (12/19/87)	8
4.	LACIE HULL VS. AMERICAN (11/24/18)	7
	Candice Wiggins vs. Old Dominion (11/24/07)	7
	Brooke Smith at Washington State (1/13/07)	7
	Jamila Wideman at Colorado (12/28/96)	7
	Katy Steding at UCLA (1/7/89)	7
	Jennifer Azzi at Fresno State (12/1/87)	7

SINGLE-GAME BLOCKS

No.	Player	BLKS
1.	Kristen Newlin at Washington State (1/2/04)	8
2.	ALANNA SMITH AT ARIZONA (11/13/19)	7
	Erica McCall at Utah (2/21/16)	7
	Joslyn Tinkle at South Carolina (12/19/12)	7
	Joslyn Tinkle at UC Davis (11/30/12)	7

TEAM SINGLE-GAME SCORING

No.	Opponent	PTS
1.	vs. Cal State Fullerton (12/10/94)	122
	vs. Long Beach State (12/8/93)	122
3.	vs. Wisconsin (11/25/88)	119
4.	vs. Arizona (2/23/91)	116
5.	VS. IDAHO (11/11/18)	115
6.	vs. Arkansas (3/24/90)	114
7.	vs. Arizona State (1/13/94)	113
	vs. California (2/1/91)	113
	at Arizona (2/24/90)	113
	vs. Ohio (11/25/89)	113

TEAM SINGLE-GAME FIELD GOALS

No.	Opponent	FGM
1.	vs. Cal State Fullerton (12/10/94)	51
2.	at Arizona (2/24/90)	47
3.	vs. Long Beach State (12/8/93)	46
4.	VS. IDAHO (11/11/18)	45
	vs. California (2/18/94)	45
	vs. Arkansas (3/24/90)	45
	vs. California (3/2/90)	45
	vs. Oregon (2/25/89)	45
9.	vs. Arizona (3/11/11)	44
	vs. Providence (12/28/94)	44
	vs. Illinois State (3/18/89)	44
	vs. Wisconsin (11/25/88)	44

TEAM SINGLE-GAME 3-POINTERS

No.	Opponent	3FGM
1.	VS. IDAHO (11/11/18)	16
	at UCLA (2/24/02)	16
	at Washington (2/24/01)	16
4.	VS. SAN FRANCISCO (11/15/18)	15
	at San Francisco (11/29/17)	15
	vs. Missouri State (11/27/15)	15
	at Arizona (1/17/14)	15
	vs. UCLA (1/20/05)	15
	vs. Washington State (1/31/04)	15
	vs. Arizona (1/10/04)	15

2018-19 Results

RECORD:	OVERALL	HOME	AWAY	NEUTRAL
ALL GAMES	18-3	10-0	6-3	2-0
CONFERENCE	8-2	5-0	3-2	0-0
NON-CONFERENCE	10-1	5-0	3-1	2-0

DATE	TIME	OPPONENT		SCORE	ATTEND	HIGH POINTS	HIGH REBOUNDS
11/7/18	7:00 p.m.	UC DAVIS	W	71-43	2471	(16) Smith, Alanna	(11) Hull, Lexie
11/11/18	2:00 p.m.	IDAHO	W	115-71	2582	(19) Williams, Kiana (19) Smith, Alanna	(9) Smith, Alanna
11/15/18	7:00 p.m.	SAN FRANCISCO	W	96-62	2077	(21) Williams, Kiana	(7) Smith, Alanna
11/23/18	4:30 p.m.	# vs. FGCU	W	88-65	1346	(24) Fingall, Nadia	(9) Carrington, DiJonai
11/24/18	12:00 p.m.	# vs. American	W	71-49	1268	(25) Smith, Alanna	(8) Smith, Alanna
11/25/18	2:30 p.m.	# at Hawaii	W	81-59	1383	(30) Smith, Alanna	(6) Fingall, Nadia
12/2/18	2:00 p.m.	at Gonzaga		73-79 L	6,000	(18) Williams, Kiana	(7) Smith, Alanna
12/15/18	12:00 p.m.	BAYLOR	W	68-63	3,440	(21) Smith, Alanna	(8) Smith, Alanna
12/18/18	6:00 p.m.	at Tennessee	W	95-85	8,051	(33) Carrington, DiJonai	(13) Carrington, DiJonai
12/21/18	12:00 p.m.	at Buffalo	W	62-55	3,412	(30) Smith, Alanna	(13) Smith, Alanna
12/29/18	2:00 p.m.	CSUN	W	69-43	2,520	(16) Dodson, Maya	(12) Carrington, DiJonai
1/4/19	8:00 p.m.	* USC	W	72-64	2,557	(22) Williams, Kiana	(11) Smith, Alanna
1/6/19	1:00 p.m.	* UCLA	W	86-80	3,231	(30) Carrington, DiJonai	(11) Smith, Alanna
1/11/19	7:00 p.m.	* at Arizona State	W	72-65	2,728	(25) Smith, Alanna	(11) Carrington, DiJonai
1/13/19	12:00 p.m.	* at Arizona	W	78-48	2,686	(20) Smith, Alanna	(14) Smith, Alanna
1/18/19	7:00 p.m.	* WASHINGTON	W	91-54	2,535	(27) Smith, Alanna	(13) Smith, Alanna
1/20/19	12:00 p.m.	* WASHINGTON STATE	W	85-64	2,908	(34) Smith, Alanna	(15) Smith, Alanna
1/25/19	7:00 p.m.	* at Colorado	W	80-69	2,373	(26) Smith, Alanna	(13) Carrington, DiJonai
1/27/19	12:00 p.m.	* at Utah		68-75 L	2,983	(19) Smith, Alanna	(9) Smith, Alanna
1/31/19	8:00 p.m.	* at California		80-81 L	3,117	(23) Carrington, DiJonai	(12) Carrington, DiJonai
2/2/19	4:00 p.m.	* CALIFORINA	W	75-50	4,066	(19) Carrington, DiJonai (19) Williams, Kiana	(7) Hull, Lacie

* = Pac-12

= Rainbow Wahine Showdown; Honolulu, Hawaii

ATTENDANCE	GAMES	TOTALS	AVG/GAME
HOME	10	28387	2839
AWAY	9	32733	3637
NEUTRAL	2	2614	1307
TOTAL	21	63734	3035

**2018-19 Stanford Women's Basketball
Stanford Combined Team Statistics (as of Feb 02, 2019)
All games**

RECORD:	OVERALL	HOME	AWAY	NEUTRAL
ALL GAMES	18-3	10-0	6-3	2-0
CONFERENCE	8-2	5-0	3-2	0-0
NON-CONFERENCE	10-1	5-0	3-1	2-0

#	Player	gp-gs	min	avg	Total		3-Point		F-Throw		Rebounds				pf	dq	a	to	blk	stl	pts	avg
					fg-fga	fg%	3fg-fga	3fg%	ft-fga	ft%	off	def	tot	avg								
11	Smith, Alanna	21-21	590	28.1	163-304	.536	54-120	.450	59-78	.756	40	130	170	8.1	60	3	47	50	50	24	439	20.9
23	Williams, Kiana	21-21	701	33.4	115-257	.447	51-137	.372	26-34	.765	1	52	53	2.5	22	0	103	54	1	24	307	14.6
21	Carrington, DiJonai	21-21	584	27.8	99-217	.456	25-68	.368	68-96	.708	33	127	160	7.6	37	0	34	46	4	25	291	13.9
15	Dodson, Maya	13-2	278	21.4	51-91	.560	0-0	.000	14-28	.500	29	25	54	4.2	30	0	17	11	22	6	116	8.9
04	Fingall, Nadia	12-12	244	20.3	40-80	.500	5-17	.294	11-21	.524	28	31	59	4.9	23	0	20	16	5	5	96	8.0
12	Hull, Lexie	12-3	251	20.9	25-61	.410	11-29	.379	10-12	.833	25	36	61	5.1	24	0	8	12	4	11	71	5.9
24	Hull, Lacie	21-15	537	25.6	39-102	.382	23-63	.365	13-15	.867	14	40	54	2.6	35	0	43	19	7	36	114	5.4
10	Jerome, Alyssa	21-7	325	15.5	27-70	.386	8-24	.333	14-18	.778	16	47	63	3.0	33	0	16	15	7	2	76	3.6
03	Wilson, Anna	17-3	179	10.5	18-43	.419	7-29	.241	7-8	.875	6	19	25	1.5	14	0	15	10	0	14	50	2.9
54	Brown, Jenna	21-0	202	9.6	17-50	.340	2-12	.167	9-17	.529	3	22	25	1.2	12	0	22	20	1	2	45	2.1
02	Coffee, Shannon	21-0	174	8.3	12-34	.353	4-17	.235	3-4	.750	12	20	32	1.5	12	0	19	7	4	5	31	1.5
14	Brewer, Mikaela	11-0	41	3.7	5-14	.357	2-6	.333	3-4	.750	4	2	6	0.5	3	0	1	2	2	2	15	1.4
22	Romano, Alexa	10-0	42	4.2	3-12	.250	2-10	.200	3-3	1.000	1	2	3	0.3	4	0	2	2	0	0	11	1.1
20	Moschkau, Estella	13-0	52	4.0	5-7	.714	4-6	.667	0-0	.000	1	5	6	0.5	6	0	3	6	0	2	14	1.1
Team											42	38	80				5					
Total.....		21	4200		619-1342	.461	198-538	.368	240-338	.710	255	596	851	40.5	315	3	350	275	107	158	1676	79.8
Opponents.....		21	4200		469-1291	.363	162-477	.340	224-323	.693	232	486	718	34.2	350	-	234	311	54	138	1324	63.0

TEAM STATISTICS	STAN	OPP	Date	Opponent	Score	Att.
SCORING	1676	1324	11/7/18	UC DAVIS	w 71-43	2471
Points per game	79.8	63.0	11/11/18	IDAHO	w 115-71	2582
Scoring margin	+16.8	-	11/15/18	SAN FRANCISCO	w 96-62	2077
FIELD GOALS-ATT	619-1342	469-1291	# 11/23/18	vs FGCU	w 88-65	1346
Field goal pct	.461	.363	# 11/24/18	vs American	w 71-49	1268
3 POINT FG-ATT	198-538	162-477	# 11/25/18	at Hawaii	w 81-59	1383
3-point FG pct	.368	.340	12/2/18	at Gonzaga	L 73-79	6000
3-pt FG made per game	9.4	7.7	12/15/18	BAYLOR	w 68-63	3440
FREE THROWS-ATT	240-338	224-323	12/18/18	at Tennessee	w 95-85	8051
Free throw pct	.710	.693	12/21/18	at Buffalo	w 62-55	3412
F-Throws made per game	11.4	10.7	12/29/18	CSUN	w 69-43	2520
REBOUNDS	851	718	* 1/4/19	USC	w 72-64	2557
Rebounds per game	40.5	34.2	* 1/6/19	UCLA	w 86-80	3231
Rebounding margin	+6.3	-	* 1/11/19	at Arizona State	w 72-65	2728
ASSISTS	350	234	* 1/13/19	at Arizona	w 78-48	2686
Assists per game	16.7	11.1	* 1/18/19	WASHINGTON	w 91-54	2535
TURNOVERS	275	311	* 1/20/19	WASHINGTON ST.	w 85-64	2908
Turnovers per game	13.1	14.8	* 1/25/19	at Colorado	w 80-69	2373
Turnover margin	+1.7	-	* 1/27/19	at Utah	L 68-75	2983
Assist/turnover ratio	1.3	0.8	* 1/31/19	at California	L 80-81	3117
STEALS	158	138	* 2/2/19	CALIFORNIA	w 75-50	4066
Steals per game	7.5	6.6				
BLOCKS	107	54				
Blocks per game	5.1	2.6				
ATTENDANCE	28387	35347				
Home games-Avg/Game	10-2839	9-3637				
Neutral site-Avg/Game	-	2-1307				

Score by Periods	1st	2nd	3rd	4th	Totals
Stanford	412	388	456	420	1676
Opponents	292	305	350	377	1324

**2018-19 Stanford Women's Basketball
Stanford Combined Team Statistics (as of Feb 02, 2019)
Conference games only**

RECORD:	OVERALL	HOME	AWAY	NEUTRAL
ALL GAMES	8-2	5-0	3-2	0-0
CONFERENCE	8-2	5-0	3-2	0-0
NON-CONFERENCE	0-0	0-0	0-0	0-0

#	Player	gp-gs	min	avg	Total		3-Point		F-Throw		Rebounds				pf	dq	a	to	blk	stl	pts	avg
					fg-fga	fg%	3fg-fga	3fg%	ft-fta	ft%	off	def	tot	avg								
11	Smith, Alanna	10-10	328	32.8	88-176	.500	26-63	.413	29-35	.829	23	75	98	9.8	29	1	18	20	32	13	231	23.1
21	Carrington, DiJonai	10-10	316	31.6	59-131	.450	14-39	.359	38-52	.731	22	63	85	8.5	19	0	13	24	2	7	170	17.0
23	Williams, Kiana	10-10	347	34.7	63-134	.470	24-67	.358	14-16	.875	1	27	28	2.8	8	0	53	26	1	13	164	16.4
15	Dodson, Maya	2-2	39	19.5	7-10	.700	0-0	.000	3-6	.500	5	3	8	4.0	8	0	1	1	3	1	17	8.5
24	Hull, Lacie	10-10	274	27.4	20-55	.364	10-34	.294	9-11	.818	5	18	23	2.3	15	0	23	9	3	15	59	5.9
12	Hull, Lexie	9-0	174	19.3	13-34	.382	5-14	.357	8-10	.800	16	24	40	4.4	16	0	5	8	1	3	39	4.3
10	Jerome, Alyssa	10-7	182	18.2	16-38	.421	4-14	.286	3-3	1.000	8	21	29	2.9	18	0	9	6	4	0	39	3.9
03	Wilson, Anna	10-0	102	10.2	11-20	.550	3-11	.273	2-2	1.000	3	7	10	1.0	3	0	8	7	0	7	27	2.7
54	Brown, Jenna	10-0	79	7.9	8-20	.400	1-4	.250	4-4	1.000	1	3	4	0.4	5	0	6	12	1	2	21	2.1
04	Fingall, Nadia	1-1	18	18.0	1-2	.500	0-1	.000	0-0	.000	2	2	4	4.0	1	0	2	2	1	0	2	2.0
14	Brewer, Mikaela	5-0	20	4.0	2-7	.286	2-3	.667	1-2	.500	3	0	3	0.6	1	0	1	0	1	2	7	1.4
02	Coffee, Shannon	10-0	106	10.6	4-17	.235	0-8	.000	3-4	.750	9	11	20	2.0	9	0	14	3	2	5	11	1.1
20	Moschkau, Estella	5-0	15	3.0	0-1	.000	0-1	.000	0-0	.000	0	3	3	0.6	3	0	1	0	0	0	0	0.0
Team											25	22	47				2					
Total.....		10	2000		292-645	.453	89-259	.344	114-145	.786	123	279	402	40.2	135	1	154	120	51	68	787	78.7
Opponents.....		10	2000		235-633	.371	77-236	.326	103-152	.678	134	242	376	37.6	159	-	106	141	34	61	650	65.0

TEAM STATISTICS	STAN	OPP	Date	Opponent	Score	Att.
SCORING	787	650	* 1/4/19	USC	w 72-64	2557
Points per game	78.7	65.0	* 1/6/19	UCLA	w 86-80	3231
Scoring margin	+13.7	-	* 1/11/19	at Arizona State	w 72-65	2728
FIELD GOALS-ATT	292-645	235-633	* 1/13/19	at Arizona	w 78-48	2686
Field goal pct	.453	.371	* 1/18/19	WASHINGTON	w 91-54	2535
3 POINT FG-ATT	89-259	77-236	* 1/20/19	WASHINGTON ST.	w 85-64	2908
3-point FG pct	.344	.326	* 1/25/19	at Colorado	w 80-69	2373
3-pt FG made per game	8.9	7.7	* 1/27/19	at Utah	L 68-75	2983
FREE THROWS-ATT	114-145	103-152	* 1/31/19	at California	L 80-81	3117
Free throw pct	.786	.678	* 2/2/19	CALIFORNIA	w 75-50	4066
F-Throws made per game	11.4	10.3				
REBOUNDS	402	376	* = Pac-12			
Rebounds per game	40.2	37.6	# = Rainbow Wahine Showdown; Honolulu, O'ahu			
Rebounding margin	+2.6	-				
ASSISTS	154	106				
Assists per game	15.4	10.6				
TURNOVERS	120	141				
Turnovers per game	12.0	14.1				
Turnover margin	+2.1	-				
Assist/turnover ratio	1.3	0.8				
STEALS	68	61				
Steals per game	6.8	6.1				
BLOCKS	51	34				
Blocks per game	5.1	3.4				
ATTENDANCE	15297	13887				
Home games-Avg/Game	5-3059	5-2777				
Neutral site-Avg/Game	-	0-0				

Score by Periods	1st	2nd	3rd	4th	Totals
Stanford	202	167	233	185	787
Opponents	152	140	164	194	650

POINTS-REBOUNDS-ASSISTS

OPPONENT	#2 SC	#3 AW	#4 NF	#10 AJ	#11 AS	#12 LH	#13 MS	#14 MB	#15 MD	#20 EM	#21 DC	#23 KW	#24 LH	#54 JB
UC Davis	0-1-1	0-5-1	2-4-0	6-8-0	16-2-1	11-11-0	DNP	0-0-0	10-6-1	0-0-0	0-2-1	14-1-3	2-3-0	4-3-2
Idaho	2-1-0	10-1-1	16-8-2	4-6-2	19-9-4	17-5-0	DNP	2-0-0	10-5-0	3-0-1	6-4-1	19-3-9	0-2-2	7-3-3
San Francisco	0-0-2	2-0-0	7-3-2	7-2-0	18-7-3	4-5-3	DNP	4-1-0	10-3-6	5-1-1	9-5-4	21-0-3	6-1-0	3-2-0
FGCU	0-1-0	8-4-3	24-8-5	2-3-1	6-6-2	DNP	DNP	DNP	6-4-1	3-0-0	16-9-3	17-6-2	3-4-4	0-0-1
American	3-1-0	0-1-2	10-5-2	3-3-0	25-8-4	DNP	DNP	DNP	4-3-1	0-0-0	13-7-1	9-0-7	0-3-0	4-3-1
Hawaii	2-1-0	2-4-0	7-6-1	4-2-1	30-4-3	DNP	DNP	0-0-0	7-1-0	0-0-0	12-4-4	9-4-3	8-3-6	0-0-0
Gonzaga	0-0-0	DNP	5-3-3	6-4-0	13-7-1	DNP	DNP	DNP	8-4-2	DNP	13-3-1	18-1-3	9-1-3	1-0-1
Baylor	9-2-0	1-0-0	2-3-1	0-2-0	21-8-2	DNP	DNP	DNP	9-5-1	DNP	10-6-2	13-1-5	3-2-0	0-1-2
Tennessee	0-2-1	DNP	3-6-1	0-2-0	16-3-3	DNP	DNP	DNP	10-9-2	DNP	33-13-2	16-5-7	14-3-1	3-1-2
Buffalo	0-0-0	DNP	12-7-1	0-0-1	30-13-5	DNP	DNP	0-0-0	9-1-1	0-0-0	4-10-0	7-2-7	0-5-2	0-1-1
CSUN	4-3-1	DNP	6-2-0	5-2-2	14-5-1	DNP	DNP	2-2-0	16-5-1	3-2-0	5-12-2	0-2-1	10-4-2	2-7-3
USC	6-4-0	0-0-0	2-4-2	0-2-1	19-11-2	DNP	DNP	DNP	DNP	DNP	14-7-0	22-4-4	7-8-0	2-0-3
UCLA	0-0-1	0-0-0	DNP	6-3-0	24-11-3	0-3-0	DNP	DNP	DNP	DNP	30-9-1	21-2-10	5-2-6	0-0-0
Arizona State	0-1-2	6-0-1	DNP	2-1-0	25-6-2	4-5-0	DNP	DNP	DNP	DNP	17-11-1	10-4-4	8-1-2	0-0-0
Arizona	2-3-1	2-2-0	DNP	2-6-1	20-14-2	8-5-0	DNP	1-1-0	DNP	0-2-1	19-8-1	13-1-7	2-1-3	9-1-0
Washington	1-2-2	5-3-5	DNP	5-2-0	27-13-1	3-5-1	DNP	6-2-1	DNP	0-0-0	12-11-5	22-1-3	6-0-0	4-1-0
Washington St.	0-4-1	5-0-0	DNP	4-2-1	34-15-3	0-7-1	DNP	0-0-0	DNP	0-1-0	11-4-3	19-0-3	8-1-1	4-1-1
Colorado	0-1-0	9-2-1	DNP	2-4-1	26-6-2	8-6-1	DNP	0-0-0	DNP	0-0-0	12-13-0	20-2-7	3-0-5	0-1-0
Utah	0-1-3	0-1-0	DNP	9-6-1	19-9-0	10-2-1	DNP	DNP	DNP	DNP	13-5-1	10-5-7	7-3-3	0-0-1
California	0-0-0	0-0-0	DNP	9-2-3	21-9-2	3-2-1	DNP	DNP	8-4-0	DNP	23-12-1	8-4-4	8-0-2	0-0-0
California	2-4-4	0-2-1	DNP	0-1-1	16-4-1	3-5-0	DNP	0-0-0	9-4-1	0-0-0	19-5-0	19-5-4	5-7-1	2-0-1

GAME-BY-GAME STARTERS

OPPONENT	DATE	SCORE	W/L	1	2	3	4	5
UC Davis	11/7	71-43	W	Williams	Lexie Hull	Carrington	Smith	Fingall
Idaho	11/11	115-71	W	Williams	Lexie Hull	Carrington	Smith	Fingall
San Francisco	11/15	96-62	W	Williams	Lexie Hull	Carrington	Smith	Fingall
FGCU	11/23	88-65	W	Williams	Wilson	Carrington	Smith	Fingall
American	11/24	71-49	W	Williams	Wilson	Carrington	Smith	Fingall
Hawaii	11/25	81-59	W	Williams	Wilson	Carrington	Smith	Fingall
Gonzaga	12/2	73-79	L	Williams	Lacie Hull	Carrington	Smith	Fingall
Baylor	12/15	68-63	W	Williams	Lacie Hull	Carrington	Smith	Fingall
Tennessee	12/18	95-85	W	Williams	Lacie Hull	Carrington	Smith	Fingall
Buffalo	12/21	62-55	W	Williams	Lacie Hull	Carrington	Smith	Fingall
CSUN	12/29	69-43	W	Williams	Lacie Hull	Carrington	Smith	Fingall
USC	1/4	72-64	W	Williams	Lacie Hull	Carrington	Smith	Fingall
UCLA	1/6	86-80	W	Williams	Lacie Hull	Carrington	Smith	Jerome
Arizona State	1/11	72-65	W	Williams	Lacie Hull	Carrington	Smith	Jerome
Arizona	1/13	78-48	W	Williams	Lacie Hull	Carrington	Smith	Jerome
Washington	1/18	91-54	W	Williams	Lacie Hull	Carrington	Smith	Jerome
Washington State	1/20	85-64	W	Williams	Lacie Hull	Carrington	Smith	Jerome
Colorado	1/25	80-69	W	Williams	Lacie Hull	Carrington	Smith	Jerome
Utah	1/27	68-75	L	Williams	Lacie Hull	Carrington	Smith	Jerome
California	1/31	80-81	L	Williams	Lacie Hull	Carrington	Smith	Dodson
California	2/2	75-50	W	Williams	Lacie Hull	Carrington	Smith	Dodson

2018-19 Stanford Women's Basketball
Stanford Season/Career Statistics (as of Feb 02, 2019)
All games

SEASON STATISTICS

CAREER STATISTICS

SUMMARY	gp-gs	min/g	fg%	3fg%	ft%	r/g	a/g	stl	blk	pts/g	gp-gs	min/g	fg%	3fg%	ft%	r/g	a/g	stl	blk	pts/g
Smith, Alanna	21-21	28.1	.536	.450	.756	8.1	2.2	24	50	20.9	128-59	21.3	.482	.360	.659	5.5	1.1	99	197	11.3
Williams, Kiana	21-21	33.4	.447	.372	.765	2.5	4.9	24	1	14.6	56-47	28.6	.429	.379	.795	2.0	3.0	54	6	12.0
Carrington, DiJonai	21-21	27.8	.456	.368	.708	7.6	1.6	25	4	13.9	88-28	17.9	.428	.306	.686	4.8	1.2	90	14	7.5
Dodson, Maya	13-2	21.4	.560	.000	.500	4.2	1.3	6	22	8.9	46-6	14.1	.526	.000	.443	2.6	0.5	8	49	5.0
Fingall, Nadia	12-12	20.3	.500	.294	.524	4.9	1.7	5	5	8.0	82-20	12.9	.487	.328	.571	3.2	0.7	34	31	4.4
Hull, Lexie	12-3	20.9	.410	.379	.833	5.1	0.7	11	4	5.9	12-3	20.9	.410	.379	.833	5.1	0.7	11	4	5.9
Hull, Lacie	21-15	25.6	.382	.365	.867	2.6	2.0	36	7	5.4	21-15	25.6	.382	.365	.867	2.6	2.0	36	7	5.4
Jerome, Alyssa	21-7	15.5	.386	.333	.778	3.0	0.8	2	7	3.6	55-8	12.0	.393	.309	.750	1.8	0.5	3	10	2.6
Wilson, Anna	17-3	10.5	.419	.241	.875	1.5	0.9	14	0	2.9	44-5	10.3	.350	.292	.667	1.2	0.6	27	1	3.1
Brown, Jenna	21-0	9.6	.340	.167	.529	1.2	1.0	2	1	2.1	21-0	9.6	.340	.167	.529	1.2	1.0	2	1	2.1
Coffee, Shannon	21-0	8.3	.353	.235	.750	1.5	0.9	5	4	1.5	80-2	5.2	.417	.279	.444	1.1	0.4	10	12	1.6
Brewer, Mikaela	11-0	3.7	.357	.333	.750	0.5	0.1	2	2	1.4	38-0	3.5	.275	.258	.750	0.3	0.2	3	2	1.0
Romano, Alexa	10-0	4.2	.250	.200	1.000	0.3	0.2	0	0	1.1	78-8	6.5	.344	.300	.727	0.7	0.4	20	4	1.6
Moschkau, Estella	13-0	4.0	.714	.667	.000	0.5	0.2	2	0	1.1	36-0	2.8	.563	.538	.500	0.3	0.1	2	0	0.7

SCORING	fg-fga	fg%	3fg-fga	3fg%	ft-fta	ft%	pts	pts/g	fg-fga	fg%	3fg-fga	3fg%	ft-fta	ft%	pts	pts/g
Smith, Alanna	163-304	.536	54-120	.450	59-78	.756	439	20.9	561-1163	.482	128-356	.360	193-293	.659	1443	11.3
Williams, Kiana	115-257	.447	51-137	.372	26-34	.765	307	14.6	243-566	.429	122-322	.379	62-78	.795	670	12.0
Carrington, DiJonai	99-217	.456	25-68	.368	68-96	.708	291	13.9	241-563	.428	60-196	.306	118-172	.686	660	7.5
Dodson, Maya	51-91	.560	0-0	.000	14-28	.500	116	8.9	102-194	.526	0-0	.000	27-61	.443	231	5.0
Fingall, Nadia	40-80	.500	5-17	.294	11-21	.524	96	8.0	148-304	.487	20-61	.328	48-84	.571	364	4.4
Hull, Lexie	25-61	.410	11-29	.379	10-12	.833	71	5.9	25-61	.410	11-29	.379	10-12	.833	71	5.9
Hull, Lacie	39-102	.382	23-63	.365	13-15	.867	114	5.4	39-102	.382	23-63	.365	13-15	.867	114	5.4
Jerome, Alyssa	27-70	.386	8-24	.333	14-18	.778	76	3.6	55-140	.393	17-55	.309	18-24	.750	145	2.6
Wilson, Anna	18-43	.419	7-29	.241	7-8	.875	50	2.9	48-137	.350	31-106	.292	10-15	.667	137	3.1
Brown, Jenna	17-50	.340	2-12	.167	9-17	.529	45	2.1	17-50	.340	2-12	.167	9-17	.529	45	2.1
Coffee, Shannon	12-34	.353	4-17	.235	3-4	.750	31	1.5	50-120	.417	12-43	.279	16-36	.444	128	1.6
Brewer, Mikaela	5-14	.357	2-6	.333	3-4	.750	15	1.4	14-51	.275	8-31	.258	3-4	.750	39	1.0
Romano, Alexa	3-12	.250	2-10	.200	3-3	1.000	11	1.1	43-125	.344	21-70	.300	16-22	.727	123	1.6
Moschkau, Estella	5-7	.714	4-6	.667	0-0	.000	14	1.1	9-16	.563	7-13	.538	1-2	.500	26	0.7

TOTALS	o-reb	d-reb	t-reb	pf	fo	ast	to	a/to	o-reb	d-reb	t-reb	pf	fo	ast	to	a/to
Smith, Alanna	40	130	170	60	3	47	50	0.9	226	477	703	307	10	135	223	0.6
Williams, Kiana	1	52	53	22	0	103	54	1.9	5	106	111	60	0	170	94	1.8
Carrington, DiJonai	33	127	160	37	0	34	46	0.7	105	313	418	138	0	106	139	0.8
Dodson, Maya	29	25	54	30	0	17	11	1.5	61	60	121	68	1	22	37	0.6
Fingall, Nadia	28	31	59	23	0	20	16	1.3	102	157	259	127	1	61	68	0.9
Hull, Lexie	25	36	61	24	0	8	12	0.7	25	36	61	24	0	8	12	0.7
Hull, Lacie	14	40	54	35	0	43	19	2.3	14	40	54	35	0	43	19	2.3
Jerome, Alyssa	16	47	63	33	0	16	15	1.1	27	72	99	60	0	30	37	0.8
Wilson, Anna	6	19	25	14	0	15	10	1.5	7	47	54	40	0	28	30	0.9
Brown, Jenna	3	22	25	12	0	22	20	1.1	3	22	25	12	0	22	20	1.1
Coffee, Shannon	12	20	32	12	0	19	7	2.7	24	66	90	36	0	29	38	0.8
Brewer, Mikaela	4	2	6	3	0	1	2	0.5	5	8	13	6	0	7	12	0.6
Romano, Alexa	1	2	3	4	0	2	2	1.0	10	44	54	22	0	32	31	1.0
Moschkau, Estella	1	5	6	6	0	3	6	0.5	3	7	10	10	0	5	6	0.8

2018-19 Individual Game-by-Game

#02 Coffee, Shannon

Opponent	Date	gs	min	Total		3-Pointers		Free throws		Rebounds				pf	a	t/o	blk	stl	pts	avg
				fg-fga	pct	3fg-fga	pct	ft-fta	pct	off	def	tot	avg							
UC DAVIS	11/7/18		6	0-1	.000	0-0	.000	0-0	.000	1	0	1	1.0	1	1	1	0	0	0	0.0
IDAHO	11/11/18		6	1-1	1.000	0-0	.000	0-0	.000	0	1	1	1.0	1	0	0	0	0	2	1.0
SAN FRANCISCO	11/15/18		8	0-1	.000	0-1	.000	0-0	.000	0	0	0	0.7	0	2	0	1	0	0	0.7
vs FGCU	11/23/18		1	0-0	.000	0-0	.000	0-0	.000	0	1	1	0.8	0	0	0	0	0	0	0.5
vs American	11/24/18		4	1-3	.333	1-2	.500	0-0	.000	0	1	1	0.8	0	0	0	0	0	3	1.0
at Hawaii	11/25/18		5	1-2	.500	0-0	.000	0-0	.000	0	1	1	0.8	0	0	0	0	0	2	1.2
at Gonzaga	12/2/18		2	0-0	.000	0-0	.000	0-0	.000	0	0	0	0.7	0	0	0	0	0	0	1.0
BAYLOR	12/15/18		19	3-4	.750	3-4	.750	0-0	.000	0	2	2	0.9	1	0	1	0	0	9	2.0
at Tennessee	12/18/18		8	0-2	.000	0-2	.000	0-0	.000	0	2	2	1.0	0	1	1	0	0	0	1.8
at Buffalo	12/21/18		0	0-0	.000	0-0	.000	0-0	.000	0	0	0	0.9	0	0	0	0	0	0	1.6
CSUN	12/29/18		9	2-3	.667	0-0	.000	0-0	.000	2	1	3	1.1	0	1	1	1	0	4	1.8
USC	1/4/19		12	2-3	.667	0-0	.000	2-2	1.000	2	2	4	1.3	0	0	1	0	0	6	2.2
UCLA	1/6/19		12	0-0	.000	0-0	.000	0-0	.000	0	0	0	1.2	1	1	0	0	1	0	2.0
at Arizona State	1/11/19		9	0-1	.000	0-1	.000	0-0	.000	0	1	1	1.2	1	2	0	1	2	0	1.9
at Arizona	1/13/19		13	1-4	.250	0-3	.000	0-0	.000	2	1	3	1.3	0	1	0	0	1	2	1.9
WASHINGTON	1/18/19		13	0-1	.000	0-1	.000	1-2	.500	2	0	2	1.4	0	2	1	0	1	1	1.8
WASHINGTON ST.	1/20/19		11	0-0	.000	0-0	.000	0-0	.000	0	4	4	1.5	2	1	0	0	0	0	1.7
at Colorado	1/25/19		8	0-0	.000	0-0	.000	0-0	.000	1	0	1	1.5	0	0	0	0	0	0	1.6
at Utah	1/27/19		11	0-2	.000	0-1	.000	0-0	.000	0	1	1	1.5	1	3	0	1	0	0	1.5
at California	1/31/19		0	0-0	.000	0-0	.000	0-0	.000	0	0	0	1.4	1	0	0	0	0	0	1.5
CALIFORNIA	2/2/19		17	1-6	.167	0-2	.000	0-0	.000	2	2	4	1.5	3	4	1	0	0	2	1.5
Totals		0	174	12-34	.353	4-17	.235	3-4	.750	12	20	32	1.5	12	19	7	4	5	31	1.5

#03 Wilson, Anna

Opponent	Date	gs	min	Total		3-Pointers		Free throws		Rebounds				pf	a	t/o	blk	stl	pts	avg
				fg-fga	pct	3fg-fga	pct	ft-fta	pct	off	def	tot	avg							
UC DAVIS	11/7/18		13	0-4	.000	0-4	.000	0-0	.000	0	5	5	5.0	1	1	1	0	1	0	0.0
IDAHO	11/11/18		11	3-8	.375	2-6	.333	2-2	1.000	1	0	1	3.0	2	1	0	0	2	10	5.0
SAN FRANCISCO	11/15/18		13	1-3	.333	0-1	.000	0-0	.000	0	0	0	2.0	2	0	0	0	1	2	4.0
vs FGCU	11/23/18	*	17	3-6	.500	2-5	.400	0-0	.000	1	3	4	2.5	2	3	1	0	1	8	5.0
vs American	11/24/18	*	5	0-0	.000	0-0	.000	0-0	.000	1	0	1	2.2	3	2	0	0	0	0	4.0
at Hawaii	11/25/18	*	15	0-2	.000	0-2	.000	2-2	1.000	0	4	4	2.5	1	0	0	0	1	2	3.7
at Gonzaga	12/2/18	dnp	-	-	-	-	-	-	-	-	-	-	-	-	-	-	-	-	-	-
BAYLOR	12/15/18		3	0-0	.000	0-0	.000	1-2	.500	0	0	0	2.1	0	0	1	0	1	1	3.3
at Tennessee	12/18/18	dnp	-	-	-	-	-	-	-	-	-	-	-	-	-	-	-	-	-	-
at Buffalo	12/21/18	dnp	-	-	-	-	-	-	-	-	-	-	-	-	-	-	-	-	-	-
USC	1/4/19		5	0-0	.000	0-0	.000	0-0	.000	0	0	0	1.9	0	0	0	0	0	0	2.9
UCLA	1/6/19		1	0-0	.000	0-0	.000	0-0	.000	0	0	0	1.7	0	0	1	0	0	0	2.6
at Arizona State	1/11/19		18	3-5	.600	0-1	.000	0-0	.000	0	0	0	1.5	1	1	2	0	1	6	2.9
at Arizona	1/13/19		11	1-3	.333	0-2	.000	0-0	.000	0	2	2	1.5	0	0	0	0	1	2	2.8
WASHINGTON	1/18/19		14	1-1	1.000	1-1	1.000	2-2	1.000	0	3	3	1.7	0	5	0	0	3	5	3.0
WASHINGTON ST.	1/20/19		10	2-2	1.000	1-1	1.000	0-0	.000	0	0	0	1.5	1	0	0	0	0	5	3.2
at Colorado	1/25/19		22	4-8	.500	1-5	.200	0-0	.000	2	0	2	1.6	0	1	1	0	2	9	3.6
at Utah	1/27/19		5	0-0	.000	0-0	.000	0-0	.000	1	0	1	1.5	0	0	2	0	0	0	3.3
at California	1/31/19		2	0-0	.000	0-0	.000	0-0	.000	0	0	0	1.4	0	0	0	0	0	0	3.1
CALIFORNIA	2/2/19		14	0-1	.000	0-1	.000	0-0	.000	0	2	2	1.5	1	1	1	0	0	0	2.9
Totals		3	179	18-43	.419	7-29	.241	7-8	.875	6	19	25	1.5	14	15	10	0	14	50	2.9

2018-19 Individual Game-by-Game

#04 Fingall, Nadia

Opponent	Date	qs	min	Total		3-Pointers		Free throws		Rebounds				pf	a	t/o	blk	stl	pts	avg
				fg-fga	pct	3fg-fga	pct	ft-fa	pct	off	def	tot	avg							
UC DAVIS	11/7/18	*	16	0-1	.000	0-0	.000	2-2	1.000	1	3	4	4.0	3	0	3	0	0	2	2.0
IDAHO	11/11/18	*	20	7-9	.778	0-0	.000	2-5	.400	3	5	8	6.0	1	2	1	2	0	16	9.0
SAN FRANCISCO	11/15/18	*	13	3-6	.500	1-3	.333	0-0	.000	2	1	3	5.0	3	2	1	0	0	7	8.3
vs FGCU	11/23/18	*	30	11-14	.786	1-2	.500	1-4	.250	5	3	8	5.8	2	5	1	0	1	24	12.3
vs American	11/24/18	*	24	3-8	.375	1-4	.250	3-4	.750	4	1	5	5.6	3	2	1	0	1	10	11.8
at Hawaii	11/25/18	*	24	3-7	.429	1-1	1.000	0-0	.000	2	4	6	5.7	1	1	2	0	1	7	11.0
at Gonzaga	12/2/18	*	25	2-4	.500	1-2	.500	0-0	.000	1	2	3	5.3	2	3	1	1	2	5	10.1
BAYLOR	12/15/18	*	17	1-8	.125	0-3	.000	0-0	.000	2	1	3	5.0	3	1	1	1	0	2	9.1
at Tennessee	12/18/18	*	18	1-4	.250	0-0	.000	1-2	.500	2	4	6	5.1	0	1	2	0	0	3	8.4
at Buffalo	12/21/18	*	29	5-9	.556	0-0	.000	2-4	.500	3	4	7	5.3	1	1	1	0	0	12	8.8
CSUN	12/29/18	*	10	3-8	.375	0-1	.000	0-0	.000	1	1	2	5.0	3	0	0	0	0	6	8.5
USC	1/4/19	*	18	1-2	.500	0-1	.000	0-0	.000	2	2	4	4.9	1	2	2	1	0	2	8.0
at Arizona State	1/11/19		dnp	-	-	-	-	-	-	-	-	-	-	-	-	-	-	-	-	-
Totals			12	40-80	.500	5-17	.294	11-21	.524	28	31	59	4.9	23	20	16	5	5	96	8.0

#10 Jerome, Alyssa

Opponent	Date	qs	min	Total		3-Pointers		Free throws		Rebounds				pf	a	t/o	blk	stl	pts	avg
				fg-fga	pct	3fg-fga	pct	ft-fa	pct	off	def	tot	avg							
UC DAVIS	11/7/18		16	2-5	.400	0-1	.000	2-2	1.000	2	6	8	8.0	0	0	1	0	0	6	6.0
IDAHO	11/11/18		13	1-2	.500	0-1	.000	2-2	1.000	0	6	6	7.0	4	2	1	0	0	4	5.0
SAN FRANCISCO	11/15/18		16	3-4	.750	1-2	.500	0-1	.000	0	2	2	5.3	2	0	0	2	0	7	5.7
vs FGCU	11/23/18		14	1-4	.250	0-0	.000	0-0	.000	0	3	3	4.8	1	1	2	0	0	2	4.8
vs American	11/24/18		12	0-2	.000	0-1	.000	3-4	.750	2	1	3	4.4	2	0	1	0	0	3	4.4
at Hawaii	11/25/18		11	0-3	.000	0-1	.000	4-6	.667	2	0	2	4.0	1	1	0	0	1	4	4.3
at Gonzaga	12/2/18		18	2-5	.400	2-2	1.000	0-0	.000	1	3	4	4.0	1	0	0	1	0	6	4.6
BAYLOR	12/15/18		8	0-1	.000	0-0	.000	0-0	.000	0	2	2	3.8	0	0	0	0	0	0	4.0
at Tennessee	12/18/18		4	0-1	.000	0-0	.000	0-0	.000	1	1	2	3.6	0	0	2	0	0	0	3.6
at Buffalo	12/21/18		9	0-1	.000	0-0	.000	0-0	.000	0	0	0	3.2	2	1	1	0	1	0	3.2
CSUN	12/29/18		22	2-4	.500	1-2	.500	0-0	.000	0	2	2	3.1	2	2	1	0	0	5	3.4
USC	1/4/19		14	0-1	.000	0-0	.000	0-0	.000	1	1	2	3.0	1	1	0	0	0	0	3.1
UCLA	1/6/19	*	20	2-2	1.000	2-2	1.000	0-0	.000	0	3	3	3.0	1	0	0	0	0	6	3.3
at Arizona State	1/11/19	*	13	1-3	.333	0-0	.000	0-0	.000	0	1	1	2.9	1	0	1	0	0	2	3.2
at Arizona	1/13/19	*	28	1-5	.200	0-3	.000	0-0	.000	0	6	6	3.1	3	1	3	1	0	2	3.1
WASHINGTON	1/18/19	*	18	2-2	1.000	0-0	.000	1-1	1.000	1	1	2	3.0	2	0	0	0	0	5	3.3
WASHINGTON ST.	1/20/19	*	24	2-7	.286	0-2	.000	0-0	.000	0	2	2	2.9	1	1	0	1	0	4	3.3
at Colorado	1/25/19	*	15	1-2	.500	0-0	.000	0-0	.000	3	1	4	3.0	1	1	0	1	0	2	3.2
at Utah	1/27/19	*	21	4-8	.500	1-3	.333	0-0	.000	2	4	6	3.2	4	1	0	1	0	9	3.5
at California	1/31/19		21	3-7	.429	1-4	.250	2-2	1.000	1	1	2	3.1	4	3	1	0	0	9	3.8
CALIFORNIA	2/2/19		8	0-1	.000	0-0	.000	0-0	.000	0	1	1	3.0	0	1	1	0	0	0	3.6
Totals			7	27-70	.386	8-24	.333	14-18	.778	16	47	63	3.0	33	16	15	7	2	76	3.6

2018-19 Individual Game-by-Game

#11 Smith, Alanna

Opponent	Date	gs	min	Total		3-Pointers		Free throws		Rebounds				pf	a	t/o	blk	stl	pts	avg	
				fg-fga	pct	3fg-fga	pct	ft-fa	pct	off	def	tot	avg								
UC DAVIS	11/7/18	*	15	4-7	.571	1-2	.500	7-7	1.000	1	1	2	2.0	4	1	4	1	1	16	16.0	
IDAHO	11/11/18	*	24	8-12	.667	2-5	.400	1-1	1.000	4	5	9	5.5	0	4	3	1	2	19	17.5	
SAN FRANCISCO	11/15/18	*	26	6-12	.500	5-8	.625	1-2	.500	0	7	7	6.0	1	3	1	4	1	18	17.7	
vs FGCU	11/23/18	*	13	1-5	.200	0-1	.000	4-5	.800	2	4	6	6.0	4	2	3	1	1	6	14.8	
vs American	11/24/18	*	31	10-18	.556	3-6	.500	2-3	.667	1	7	8	6.4	1	4	3	1	2	25	16.8	
at Hawaii	11/25/18	*	25	12-15	.800	3-6	.500	3-3	1.000	2	2	4	6.0	2	3	3	1	0	30	19.0	
at Gonzaga	12/2/18	*	24	4-9	.444	2-5	.400	3-6	.500	2	5	7	6.1	5	1	3	2	3	13	18.1	
BAYLOR	12/15/18	*	28	7-12	.583	5-9	.556	2-8	.250	0	8	8	6.4	4	2	3	2	1	21	18.5	
at Tennessee	12/18/18	*	21	5-6	.833	3-4	.750	3-4	.750	1	2	3	6.0	5	3	2	1	0	16	18.2	
at Buffalo	12/21/18	*	38	12-22	.545	4-9	.444	2-2	1.000	3	10	13	6.7	2	5	5	3	0	30	19.4	
CSUN	12/29/18	*	17	6-10	.600	0-2	.000	2-2	1.000	1	4	5	6.5	3	1	0	1	0	14	18.9	
USC	1/4/19	*	39	8-21	.381	3-9	.333	0-0	.000	2	9	11	6.9	2	2	1	5	0	19	18.9	
UCLA	1/6/19	*	40	8-18	.444	3-5	.600	5-6	.833	2	9	11	7.2	4	3	2	5	2	24	19.3	
at Arizona State	1/11/19	*	37	9-15	.600	1-3	.333	6-6	1.000	1	5	6	7.1	4	2	2	1	1	25	19.7	
at Arizona	1/13/19	*	27	8-16	.500	4-6	.667	0-0	.000	5	9	14	7.6	2	2	3	7	0	20	19.7	
WASHINGTON	1/18/19	*	29	12-18	.667	3-6	.500	0-0	.000	6	7	13	7.9	1	1	3	3	0	27	20.2	
WASHINGTON ST.	1/20/19	*	31	13-17	.765	4-5	.800	4-6	.667	3	12	15	8.4	0	3	1	2	1	34	21.0	
at Colorado	1/25/19	*	38	9-19	.474	3-8	.375	5-6	.833	1	5	6	8.2	3	2	2	5	3	26	21.3	
at Utah	1/27/19	*	25	6-17	.353	3-9	.333	4-5	.800	0	9	9	8.3	5	0	4	3	0	19	21.2	
at California	1/31/19	*	37	9-22	.409	2-9	.222	1-1	1.000	3	6	9	8.3	4	2	0	0	5	21	21.2	
CALIFORNIA	2/2/19	*	25	6-13	.462	0-3	.000	4-5	.800	0	4	4	8.1	4	1	2	1	1	16	20.9	
Totals			21	590	163-304	.536	54-120	.450	59-78	.756	40	130	170	8.1	60	47	50	50	24	439	20.9

#12 Hull, Lexie

Opponent	Date	gs	min	Total		3-Pointers		Free throws		Rebounds				pf	a	t/o	blk	stl	pts	avg	
				fg-fga	pct	3fg-fga	pct	ft-fa	pct	off	def	tot	avg								
UC DAVIS	11/7/18	*	27	5-10	.500	1-4	.250	0-0	.000	3	8	11	11.0	3	0	2	1	4	11	11.0	
IDAHO	11/11/18	*	25	6-12	.500	5-10	.500	0-0	.000	2	3	5	8.0	3	0	0	2	2	17	14.0	
SAN FRANCISCO	11/15/18	*	25	1-5	.200	0-1	.000	2-2	1.000	4	1	5	7.0	2	3	2	0	2	4	10.7	
vs FGCU	11/23/18		dnp	-	-	-	-	-	-	-	-	-	-	-	-	-	-	-	-	-	
vs American	11/24/18		dnp	-	-	-	-	-	-	-	-	-	-	-	-	-	-	-	-	-	
at Hawaii	11/25/18		dnp	-	-	-	-	-	-	-	-	-	-	-	-	-	-	-	-	-	
at Gonzaga	12/2/18		dnp	-	-	-	-	-	-	-	-	-	-	-	-	-	-	-	-	-	
at Tennessee	12/18/18		dnp	-	-	-	-	-	-	-	-	-	-	-	-	-	-	-	-	-	
at Buffalo	12/21/18		dnp	-	-	-	-	-	-	-	-	-	-	-	-	-	-	-	-	-	
UCLA	1/6/19		8	0-4	.000	0-2	.000	0-0	.000	3	0	3	6.0	1	0	3	0	0	0	8.0	
at Arizona State	1/11/19		15	1-2	.500	0-0	.000	2-2	1.000	2	3	5	5.8	1	0	1	1	0	4	7.2	
at Arizona	1/13/19		14	3-4	.750	2-2	1.000	0-0	.000	2	3	5	5.7	4	0	1	0	0	8	7.3	
WASHINGTON	1/18/19		24	1-3	.333	1-2	.500	0-0	.000	2	3	5	5.6	1	1	1	0	1	3	6.7	
WASHINGTON ST.	1/20/19		24	0-6	.000	0-2	.000	0-0	.000	1	6	7	5.8	1	1	1	0	1	0	5.9	
at Colorado	1/25/19		18	3-5	.600	0-2	.000	2-2	1.000	3	3	6	5.8	2	1	0	0	1	8	6.1	
at Utah	1/27/19		33	3-5	.600	1-1	1.000	3-4	.750	1	1	2	5.4	2	1	0	0	0	10	6.5	
at California	1/31/19		23	1-4	.250	0-2	.000	1-2	.500	1	1	2	5.1	2	1	0	0	0	3	6.2	
CALIFORNIA	2/2/19		15	1-1	1.000	1-1	1.000	0-0	.000	1	4	5	5.1	2	0	1	0	0	3	5.9	
Totals			3	251	25-61	.410	11-29	.379	10-12	.833	25	36	61	5.1	24	8	12	4	11	71	5.9

2018-19 Individual Game-by-Game

#24 Hull, Lacie

Opponent	Date	gs	min	Total		3-Pointers		Free throws		Rebounds				pf	a	t/o	blk	stl	pts	avg	
				fg-fga	pct	3fg-fga	pct	ft-fta	pct	off	def	tot	avg								
UC DAVIS	11/7/18		17	1-5	.200	0-3	.000	0-0	.000	0	3	3	3.0	0	0	1	0	2	2	2.0	
IDAHO	11/11/18		12	0-2	.000	0-0	.000	0-0	.000	2	0	2	2.5	3	2	0	1	0	0	1.0	
SAN FRANCISCO	11/15/18		13	2-5	.400	2-4	.500	0-0	.000	0	1	1	2.0	2	0	0	0	0	6	2.7	
vs FGCU	11/23/18		22	1-3	.333	1-2	.500	0-0	.000	1	3	4	2.5	3	4	0	0	2	3	2.8	
vs American	11/24/18		33	0-3	.000	0-1	.000	0-0	.000	0	3	3	2.6	1	0	2	0	7	0	2.2	
at Hawaii	11/25/18		28	3-4	.750	2-3	.667	0-0	.000	0	3	3	2.7	0	6	2	2	3	8	3.2	
at Gonzaga	12/2/18	*	37	2-3	.667	1-2	.500	4-4	1.000	1	0	1	2.4	2	3	1	0	3	9	4.0	
BAYLOR	12/15/18	*	22	1-6	.167	1-3	.333	0-0	.000	2	0	2	2.4	3	0	1	0	1	3	3.9	
at Tennessee	12/18/18	*	32	5-8	.625	4-5	.800	0-0	.000	1	2	3	2.4	3	1	0	1	0	14	5.0	
at Buffalo	12/21/18	*	24	0-1	.000	0-1	.000	0-0	.000	0	5	5	2.7	2	2	2	0	0	0	4.5	
CSUN	12/29/18	*	23	4-7	.571	2-5	.400	0-0	.000	2	2	4	2.8	1	2	1	0	3	10	5.0	
USC	1/4/19	*	36	3-7	.429	1-4	.250	0-0	.000	0	8	8	3.3	3	0	1	1	2	7	5.2	
UCLA	1/6/19	*	38	2-6	.333	1-4	.250	0-0	.000	0	2	2	3.2	0	6	0	0	2	5	5.2	
at Arizona State	1/11/19	*	30	3-5	.600	1-2	.500	1-1	1.000	0	1	1	3.0	1	2	0	0	2	8	5.4	
at Arizona	1/13/19	*	22	0-2	.000	0-2	.000	2-2	1.000	0	1	1	2.9	2	3	1	0	1	2	5.1	
WASHINGTON	1/18/19	*	19	2-10	.200	2-8	.250	0-0	.000	0	0	0	2.7	2	0	4	0	0	6	5.2	
WASHINGTON ST.	1/20/19	*	24	2-7	.286	2-4	.500	2-2	1.000	1	0	1	2.6	1	1	0	1	1	8	5.4	
at Colorado	1/25/19	*	25	1-2	.500	0-1	.000	1-1	1.000	0	0	0	2.4	3	5	0	0	2	3	5.2	
at Utah	1/27/19	*	33	2-5	.400	1-2	.500	2-4	.500	2	1	3	2.5	1	3	1	1	2	7	5.3	
at California	1/31/19	*	26	3-7	.429	1-4	.250	1-1	1.000	0	0	0	2.4	0	2	1	0	0	8	5.5	
CALIFORNIA	2/2/19	*	21	2-4	.500	1-3	.333	0-0	.000	2	5	7	2.6	2	1	1	0	3	5	5.4	
Totals			15	537	39-102	.382	23-63	.365	13-15	.867	14	40	54	2.6	35	43	19	7	36	114	5.4

#54 Brown, Jenna

Opponent	Date	gs	min	Total		3-Pointers		Free throws		Rebounds				pf	a	t/o	blk	stl	pts	avg	
				fg-fga	pct	3fg-fga	pct	ft-fta	pct	off	def	tot	avg								
UC DAVIS	11/7/18		19	2-2	1.000	0-0	.000	0-2	.000	0	3	3	3.0	1	2	3	0	0	4	4.0	
IDAHO	11/11/18		13	3-6	.500	1-4	.250	0-0	.000	0	3	3	3.0	0	3	1	0	0	7	5.5	
SAN FRANCISCO	11/15/18		9	1-4	.250	0-1	.000	1-2	.500	0	2	2	2.7	1	0	0	0	0	3	4.7	
vs FGCU	11/23/18		4	0-2	.000	0-0	.000	0-0	.000	0	0	0	2.0	0	1	0	0	0	0	3.5	
vs American	11/24/18		12	1-4	.250	0-1	.000	2-3	.667	0	3	3	2.2	0	1	0	0	0	4	3.6	
at Hawaii	11/25/18		14	0-1	.000	0-1	.000	0-0	.000	0	0	0	1.8	2	0	0	0	0	0	3.0	
at Gonzaga	12/2/18		7	0-0	.000	0-0	.000	1-2	.500	0	0	0	1.6	1	1	1	0	0	1	2.7	
BAYLOR	12/15/18		8	0-0	.000	0-0	.000	0-0	.000	0	1	1	1.5	0	2	0	0	0	0	2.4	
at Tennessee	12/18/18		9	1-4	.250	0-1	.000	1-2	.500	0	1	1	1.4	0	2	0	0	0	3	2.4	
at Buffalo	12/21/18		6	0-1	.000	0-0	.000	0-0	.000	0	1	1	1.4	2	1	1	0	0	0	2.2	
CSUN	12/29/18		22	1-6	.167	0-0	.000	0-2	.000	2	5	7	1.9	0	3	2	0	0	2	2.2	
USC	1/4/19		7	1-2	.500	0-0	.000	0-0	.000	0	0	0	1.8	0	3	1	0	0	2	2.2	
UCLA	1/6/19		3	0-1	.000	0-0	.000	0-0	.000	0	0	0	1.6	0	0	1	0	1	0	2.0	
at Arizona State	1/11/19		3	0-0	.000	0-0	.000	0-0	.000	0	0	0	1.5	0	0	1	0	0	0	1.9	
at Arizona	1/13/19		20	3-5	.600	1-2	.500	2-2	1.000	0	1	1	1.5	1	0	4	0	0	9	2.3	
WASHINGTON	1/18/19		16	2-7	.286	0-1	.000	0-0	.000	1	0	1	1.4	1	0	1	0	1	4	2.4	
WASHINGTON ST.	1/20/19		14	1-2	.500	0-0	.000	2-2	1.000	0	1	1	1.4	0	1	2	1	0	4	2.5	
at Colorado	1/25/19		3	0-1	.000	0-1	.000	0-0	.000	0	1	1	1.4	0	0	0	0	0	0	2.4	
at Utah	1/27/19		2	0-0	.000	0-0	.000	0-0	.000	0	0	0	1.3	1	1	1	0	0	0	2.3	
at California	1/31/19		1	0-1	.000	0-0	.000	0-0	.000	0	0	0	1.3	0	0	0	0	0	0	2.2	
CALIFORNIA	2/2/19		10	1-1	1.000	0-0	.000	0-0	.000	0	0	0	1.2	2	1	1	0	0	2	2.1	
Totals			0	202	17-50	.340	2-12	.167	9-17	.529	3	22	25	1.2	12	22	20	1	2	45	2.1

Stanford Women's Basketball Individual Career History

Brewer, Mikaela

Season	gp-gs	min/avg	Total		3-Point		F-Throws			Rebounds				Scoring						
			fg-fga	pct	fg-fga	pct	ft-fta	pct	off	def	tot	avg	pf	fo	ast	to	blk	stl	pts	avg
2016-17	10-0	60/6.0	7-23	.304	5-16	.313	0-0	.000	1	5	6	0.6	3	0	4	7	0	1	19	1.9
2017-18	17-0	31/1.8	2-14	.143	1-9	.111	0-0	.000	0	1	1	0.1	0	0	2	3	0	0	5	0.3
2018-19	11-0	41/3.7	5-14	.357	2-6	.333	3-4	.750	4	2	6	0.5	3	0	1	2	2	2	15	1.4
TOTAL	38-0	132/3.5	14-51	.275	8-31	.258	3-4	.750	5	8	13	0.3	6	0	7	12	2	3	39	1.0

SINGLE-GAME HIGHS [all-time ranking]:

Points: 6, Washington -- 1/18/19; Cal Poly -- 11/11/16

Rebounds: 2, Washington -- 1/18/19; Cal Poly -- 11/11/16; CSUN -- 12/29/18

Assists: 2, CSUN -- 11/20/16; vs Wichita St. -- 11/25/16

Steals: 1, at Arizona -- 1/13/19; Washington -- 1/18/19; UC Davis -- 12/4/16

Blocks: 1, Washington St. -- 1/20/19; UC Davis -- 11/7/18; UC Davis -- 11/07/18

FG made: 2, Washington -- 1/18/19; Cal Poly -- 11/11/16; vs Wichita St. -- 11/25/16

FG attempts: 6, CSUN -- 11/20/16; vs Wichita St. -- 11/25/16

3FG made: 2, Washington -- 1/18/19; Cal Poly -- 11/11/16

3FG attempts: 5, vs Wichita St. -- 11/25/16

FT made: 2, San Francisco -- 11/15/18; San Francisco -- 11/15/18

FT attempts: 2, at Arizona -- 1/13/19; San Francisco -- 11/15/18; San Francisco -- 11/15/18

Brown, Jenna

Season	gp-gs	min/avg	Total		3-Point		F-Throws			Rebounds				Scoring						
			fg-fga	pct	fg-fga	pct	ft-fta	pct	off	def	tot	avg	pf	fo	ast	to	blk	stl	pts	avg
2018-19	21-0	202/9.6	17-50	.340	2-12	.167	9-17	.529	3	22	25	1.2	12	0	22	20	1	2	45	2.1
TOTAL	21-0	202/9.6	17-50	.340	2-12	.167	9-17	.529	3	22	25	1.2	12	0	22	20	1	2	45	2.1

SINGLE-GAME HIGHS [all-time ranking]:

Points: 9, at Arizona -- 1/13/19

Rebounds: 7, CSUN -- 12/29/18

Assists: 3, 4 times

Steals: 1, Washington -- 1/18/19; UCLA -- 1/6/19

Blocks: 1, Washington St. -- 1/20/19

FG made: 3, at Arizona -- 1/13/19; Idaho -- 11/11/18; Idaho -- 11/11/18

FG attempts: 7, Washington -- 1/18/19

3FG made: 1, at Arizona -- 1/13/19; Idaho -- 11/11/18; Idaho -- 11/11/18

3FG attempts: 4, Idaho -- 11/11/18; Idaho -- 11/11/18

FT made: 2, at Arizona -- 1/13/19; Washington St. -- 1/20/19; vs American -- 11/24/18

FT attempts: 3, vs American -- 11/24/18

Carrington, DiJonai

Season	gp-gs	min/avg	Total		3-Point		F-Throws			Rebounds				Scoring						
			fg-fga	pct	fg-fga	pct	ft-fta	pct	off	def	tot	avg	pf	fo	ast	to	blk	stl	pts	avg
2016-17	35-0	274/7.8	35-79	.443	5-21	.238	11-19	.579	21	59	80	2.3	36	0	14	24	3	19	86	2.5
2017-18	32-7	721/22.5	107-267	.401	30-107	.280	39-57	.684	51	127	178	5.6	65	0	58	69	7	46	283	8.8
2018-19	21-21	584/27.8	99-217	.456	25-68	.368	68-96	.708	33	127	160	7.6	37	0	34	46	4	25	291	13.9
TOTAL	88-28	1579/17.9	241-563	.428	60-196	.306	118-172	.686	105	313	418	4.8	138	0	106	139	14	90	660	7.5

SINGLE-GAME HIGHS [all-time ranking]:

Points: 33, at Tennessee -- 12/18/18

Rebounds: 22, UC Riverside -- 11/17/17; UC Riverside -- 11/17/17

Assists: 5, 5 times

Steals: 4, at USC -- 1/19/18

Blocks: 1, 15 times

FG made: 11, UCLA -- 1/6/19; at Tennessee -- 12/18/18

FG attempts: 18, UCLA -- 1/6/19

3FG made: 4, at Tennessee -- 12/18/18

3FG attempts: 8, 5 times

FT made: 12, vs FGCU -- 11/23/18

FT attempts: 15, vs FGCU -- 11/23/18

Stanford Women's Basketball Individual Career History

Coffee, Shannon

Season	gp-gs	min/avg	Total		3-Point		F-Throws		Rebounds				Scoring							
			fg-fga	pct	fg-fga	pct	ft-fta	pct	off	def	tot	avg	pf	fo	ast	to	blk	stl	pts	avg
2015-16	12-0	45/3.8	9-21	.429	0-2	.000	3-13	.231	3	10	13	1.1	3	0	1	7	1	0	21	1.8
2016-17	20-0	86/4.3	17-27	.630	1-4	.250	9-17	.529	4	17	21	1.1	9	0	3	10	3	2	44	2.2
2017-18	27-2	112/4.1	12-38	.316	7-20	.350	1-2	.500	5	19	24	0.9	12	0	6	14	4	3	32	1.2
2018-19	21-0	174/8.3	12-34	.353	4-17	.235	3-4	.750	12	20	32	1.5	12	0	19	7	4	5	31	1.5
TOTAL	80-2	417/5.2	50-120	.417	12-43	.279	16-36	.444	24	66	90	1.1	36	0	29	38	12	10	128	1.6

SINGLE-GAME HIGHS [all-time ranking]:

Points: 14, at Baylor -- 12/3/17

Rebounds: 7, vs Wichita St. -- 11/25/16

Assists: 4, California -- 2/2/19

Steals: 2, at Arizona State -- 1/11/19

Blocks: 1, 13 times

FG made: 5, vs Wichita St. -- 11/25/16; at Baylor -- 12/3/17

FG attempts: 11, at Baylor -- 12/3/17

3FG made: 4, at Baylor -- 12/3/17

3FG attempts: 8, at Baylor -- 12/3/17

FT made: 3, vs Northeastern -- 11/24/16; vs Wichita St. -- 11/25/16

FT attempts: 10, CSU Bakersfield -- 12/22/15

Dodson, Maya

Season	gp-gs	min/avg	Total		3-Point		F-Throws		Rebounds				Scoring							
			fg-fga	pct	fg-fga	pct	ft-fta	pct	off	def	tot	avg	pf	fo	ast	to	blk	stl	pts	avg
2017-18	33-4	372/11.3	51-103	.495	0-0	.000	13-33	.394	32	35	67	2.0	38	1	5	26	27	2	115	3.5
2018-19	13-2	278/21.4	51-91	.560	0-0	.000	14-28	.500	29	25	54	4.2	30	0	17	11	22	6	116	8.9
TOTAL	46-6	650/14.1	102-194	.526	0-0	.000	27-61	.443	61	60	121	2.6	68	1	22	37	49	8	231	5.0

SINGLE-GAME HIGHS [all-time ranking]:

Points: 16, CSUN -- 12/29/18

Rebounds: 9, at Tennessee -- 12/18/18

Assists: 6, San Francisco -- 11/15/18; San Francisco -- 11/15/18

Steals: 2, UC Davis -- 11/7/18; UC Davis -- 11/07/18

Blocks: 4, San Francisco -- 11/15/18; Western Illinois -- 12/18/17; San Francisco -- 11/15/18

FG made: 8, CSUN -- 12/29/18

FG attempts: 17, CSUN -- 12/29/18

FT made: 3, Baylor -- 12/15/18; at Buffalo -- 12/21/18

FT attempts: 5, San Francisco -- 11/15/18; at Gonzaga -- 12/2/18; San Francisco -- 11/15/18

Fingall, Nadia

Season	gp-gs	min/avg	Total		3-Point		F-Throws		Rebounds				Scoring							
			fg-fga	pct	fg-fga	pct	ft-fta	pct	off	def	tot	avg	pf	fo	ast	to	blk	stl	pts	avg
2016-17	36-8	419/11.6	67-132	.508	2-13	.154	19-37	.514	42	51	93	2.6	52	0	22	30	13	13	155	4.3
2017-18	34-0	398/11.7	41-92	.446	13-31	.419	18-26	.692	32	75	107	3.1	52	1	19	22	13	16	113	3.3
2018-19	12-12	244/20.3	40-80	.500	5-17	.294	11-21	.524	28	31	59	4.9	23	0	20	16	5	5	96	8.0
TOTAL	82-20	1061/12.9	148-304	.487	20-61	.328	48-84	.571	102	157	259	3.2	127	1	61	68	31	34	364	4.4

SINGLE-GAME HIGHS [all-time ranking]:

Points: 24, vs FGCU -- 11/23/18

Rebounds: 8, 5 times

Assists: 5, vs FGCU -- 11/23/18

Steals: 3, Utah -- 2/12/17

Blocks: 2, 6 times

FG made: 11, vs FGCU -- 11/23/18

FG attempts: 14, vs FGCU -- 11/23/18

3FG made: 2, 4 times

3FG attempts: 4, vs American -- 11/24/18; at Baylor -- 12/3/17

FT made: 4, at Arizona -- 1/1/17

FT attempts: 5, Idaho -- 11/11/18; at George Washington -- 12/21/16; Idaho -- 11/11/18

Stanford Women's Basketball Individual Career History

Hull, Lacie

Season	gp-gs	min/avg	Total		3-Point		F-Throws		Rebounds				Scoring							
			fg-fga	pct	fg-fga	pct	ft-fta	pct	off	def	tot	avg	pf	fo	ast	to	blk	stl	pts	avg
2018-19	21-15	537/25.6	39-102	.382	23-63	.365	13-15	.867	14	40	54	2.6	35	0	43	19	7	36	114	5.4
TOTAL	21-15	537/25.6	39-102	.382	23-63	.365	13-15	.867	14	40	54	2.6	35	0	43	19	7	36	114	5.4

SINGLE-GAME HIGHS [all-time ranking]:

Points: 14, at Tennessee -- 12/18/18

Rebounds: 8, USC -- 1/4/19

Assists: 6, UCLA -- 1/6/19; at Hawaii -- 11/25/18

Steals: 7, vs American -- 11/24/18

Blocks: 2, at Hawaii -- 11/25/18

FG made: 5, at Tennessee -- 12/18/18

FG attempts: 10, Washington -- 1/18/19

3FG made: 4, at Tennessee -- 12/18/18

3FG attempts: 8, Washington -- 1/18/19

FT made: 4, at Gonzaga -- 12/2/18

FT attempts: 4, at Utah -- 1/27/19; at Gonzaga -- 12/2/18

Hull, Lexie

Season	gp-gs	min/avg	Total		3-Point		F-Throws		Rebounds				Scoring							
			fg-fga	pct	fg-fga	pct	ft-fta	pct	off	def	tot	avg	pf	fo	ast	to	blk	stl	pts	avg
2018-19	12-3	251/20.9	25-61	.410	11-29	.379	10-12	.833	25	36	61	5.1	24	0	8	12	4	11	71	5.9
TOTAL	12-3	251/20.9	25-61	.410	11-29	.379	10-12	.833	25	36	61	5.1	24	0	8	12	4	11	71	5.9

SINGLE-GAME HIGHS [all-time ranking]:

Points: 17, Idaho -- 11/11/18; Idaho -- 11/11/18

Rebounds: 11, UC Davis -- 11/7/18; UC Davis -- 11/07/18

Assists: 3, San Francisco -- 11/15/18; San Francisco -- 11/15/18

Steals: 4, UC Davis -- 11/7/18; UC Davis -- 11/07/18

Blocks: 2, Idaho -- 11/11/18; Idaho -- 11/11/18

FG made: 6, Idaho -- 11/11/18; Idaho -- 11/11/18

FG attempts: 12, Idaho -- 11/11/18; Idaho -- 11/11/18

3FG made: 5, Idaho -- 11/11/18; Idaho -- 11/11/18

3FG attempts: 10, Idaho -- 11/11/18; Idaho -- 11/11/18

FT made: 3, at Utah -- 1/27/19

FT attempts: 4, at Utah -- 1/27/19

Jerome, Alyssa

Season	gp-gs	min/avg	Total		3-Point		F-Throws		Rebounds				Scoring							
			fg-fga	pct	fg-fga	pct	ft-fta	pct	off	def	tot	avg	pf	fo	ast	to	blk	stl	pts	avg
2017-18	34-1	337/9.9	28-70	.400	9-31	.290	4-6	.667	11	25	36	1.1	27	0	14	22	3	1	69	2.0
2018-19	21-7	325/15.5	27-70	.386	8-24	.333	14-18	.778	16	47	63	3.0	33	0	16	15	7	2	76	3.6
TOTAL	55-8	662/12.0	55-140	.393	17-55	.309	18-24	.750	27	72	99	1.8	60	0	30	37	10	3	145	2.6

SINGLE-GAME HIGHS [all-time ranking]:

Points: 9, at Utah -- 1/27/19; at California -- 1/31/19

Rebounds: 8, UC Davis -- 11/07/18; UC Davis -- 11/7/18

Assists: 3, at California -- 1/31/19

Steals: 1, at USC -- 1/19/18; at Hawaii -- 11/25/18; at Buffalo -- 12/21/18

Blocks: 2, San Francisco -- 11/15/18; San Francisco -- 11/15/18; UNLV -- 12/16/17

FG made: 4, at Utah -- 1/27/19

FG attempts: 8, at Utah -- 1/27/19

3FG made: 2, 4 times

3FG attempts: 4, vs Kent State -- 11/23/17; at California -- 1/31/19; vs Kent State -- 11/23/17

FT made: 4, at Hawaii -- 11/25/18

FT attempts: 6, at Hawaii -- 11/25/18

Stanford Women's Basketball Individual Career History

Moschkau, Estella

Season	gp-gs	min/avg	Total		3-Point		F-Throws		Rebounds				Scoring							
			fg-fga	pct	fg-fga	pct	ft-flt	pct	off	def	tot	avg	pf	fo	ast	to	blk	stl	pts	avg
2017-18	23-0	49/2.1	4-9	.444	3-7	.429	1-2	.500	2	2	4	0.2	4	0	2	0	0	0	12	0.5
2018-19	13-0	52/4.0	5-7	.714	4-6	.667	0-0	.000	1	5	6	0.5	6	0	3	6	0	2	14	1.1
TOTAL	36-0	101/2.8	9-16	.563	7-13	.538	1-2	.500	3	7	10	0.3	10	0	5	6	0	26	0.7	

SINGLE-GAME HIGHS [all-time ranking]:

Points: 5, San Francisco -- 11/15/18; San Francisco -- 11/15/18
 Rebounds: 2, at Arizona -- 1/13/19; at Arizona -- 1/5/18; CSUN -- 12/29/18
 Assists: 1, 7 times
 Steals: 2, at Hawaii -- 11/25/18
 FG made: 2, San Francisco -- 11/15/18; San Francisco -- 11/15/18
 FG attempts: 2, 6 times
 3FG made: 1, 10 times
 3FG attempts: 2, CSU Bakersfield -- 11/19/17; CSU Bakersfield -- 11/19/17; CSUN -- 12/29/18
 FT made: 1, Arizona -- 1/28/18
 FT attempts: 2, Arizona -- 1/28/18

Smith, Alanna

Season	gp-gs	min/avg	Total		3-Point		F-Throws		Rebounds				Scoring							
			fg-fga	pct	fg-fga	pct	ft-flt	pct	off	def	tot	avg	pf	fo	ast	to	blk	stl	pts	avg
2015-16	34-0	400/11.8	67-155	.432	20-60	.333	29-44	.659	28	52	80	2.4	63	1	13	43	24	5	183	5.4
2016-17	38-3	735/19.3	133-286	.465	19-60	.317	62-90	.689	66	141	207	5.4	88	4	34	42	61	25	347	9.1
2017-18	35-35	995/28.4	198-418	.474	35-116	.302	43-81	.531	92	154	246	7.0	96	2	41	88	62	45	474	13.5
2018-19	21-21	590/28.1	163-304	.536	54-120	.450	59-78	.756	40	130	170	8.1	60	3	47	50	50	24	439	20.9
TOTAL	128-59	2720/21.3	561-1163	.482	128-356	.360	193-293	.659	226	477	703	5.5	307	10	135	223	197	99	1443	11.3

SINGLE-GAME HIGHS [all-time ranking]:

Points: 34, Washington St. -- 1/20/19
 Rebounds: 16, vs Ohio State -- 11/25/17
 Assists: 5, at Buffalo -- 12/21/18
 Steals: 6, at California -- 2/17/18
 Blocks: 7, at Arizona -- 1/13/19
 FG made: 14, vs Ohio State -- 11/25/17
 FG attempts: 24, Western Illinois -- 12/18/17; at California -- 2/17/18
 3FG made: 6, vs Dayton -- 11/28/15
 3FG attempts: 11, at California -- 2/17/18
 FT made: 7, UC Davis -- 11/07/18; UC Davis -- 11/7/18
 FT attempts: 8, Baylor -- 12/15/18; Cornell -- 12/19/15; at California -- 2/16/17

Sniezek, Marta

Season	gp-gs	min/avg	Total		3-Point		F-Throws		Rebounds				Scoring							
			fg-fga	pct	fg-fga	pct	ft-flt	pct	off	def	tot	avg	pf	fo	ast	to	blk	stl	pts	avg
2015-16	35-9	656/18.7	35-99	.354	4-17	.235	28-42	.667	8	48	56	1.6	27	0	109	63	1	21	102	2.9
2016-17	38-9	948/24.9	56-149	.376	6-20	.300	54-75	.720	6	100	106	2.8	64	0	169	93	3	51	172	4.5
2017-18	35-32	971/27.7	56-156	.359	20-59	.339	61-90	.678	7	115	122	3.5	68	1	150	78	3	38	193	5.5
TOTAL	108-50	2575/23.8	147-404	.364	30-96	.313	143-207	.691	21	263	284	2.6	159	1	428	234	7	110	467	4.3

SINGLE-GAME HIGHS [all-time ranking]:

Points: 13, Arizona State -- 1/26/18; at Washington -- 2/23/18
 Rebounds: 10, USC -- 12/31/17
 Assists: 13, vs Washington -- 3/4/16
 Steals: 6, Oregon State -- 1/8/17
 Blocks: 1, 7 times
 FG made: 5, Arizona State -- 1/26/18; vs Notre Dame -- 3/25/16
 FG attempts: 12, vs Belmont -- 11/24/17
 3FG made: 3, at Arizona State -- 1/7/18; Utah -- 2/9/18
 3FG attempts: 8, vs Belmont -- 11/24/17
 FT made: 6, UC Riverside -- 11/17/17; UC Riverside -- 11/17/17; vs USC -- 3/2/18
 FT attempts: 9, Tennessee -- 12/16/15

Stanford Women's Basketball Individual Career History

Williams, Kiana

Season	gp-gs	min/avg	Total		3-Point		F-Throws		Rebounds				Scoring							
			fg-fga	pct	fg-fga	pct	ft-fta	pct	off	def	tot	avg	pf	fo	ast	to	blk	stl	pts	avg
2017-18	35-26	899/25.7	128-309	.414	71-185	.384	36-44	.818	4	54	58	1.7	38	0	67	40	5	30	363	10.4
2018-19	21-21	701/33.4	115-257	.447	51-137	.372	26-34	.765	1	52	53	2.5	22	0	103	54	1	24	307	14.6
TOTAL	56-47	1600/28.6	243-566	.429	122-322	.379	62-78	.795	5	106	111	2.0	60	0	170	94	6	54	670	12.0

SINGLE-GAME HIGHS [all-time ranking]:

Points: 26, California -- 2/15/18

Rebounds: 6, vs FGCU -- 11/23/18; Utah -- 2/9/18

Assists: 10, UCLA -- 1/6/19

Steals: 4, Washington -- 1/18/19; California -- 2/15/18

Blocks: 1, 7 times

FG made: 9, Washington -- 1/18/19; vs Arizona State -- 3/3/18

FG attempts: 20, at Colorado -- 1/25/19

3FG made: 6, vs Arizona State -- 3/3/18

3FG attempts: 11, 5 times

FT made: 7, California -- 2/15/18

FT attempts: 9, California -- 2/15/18

Wilson, Anna

Season	gp-gs	min/avg	Total		3-Point		F-Throws		Rebounds				Scoring							
			fg-fga	pct	fg-fga	pct	ft-fta	pct	off	def	tot	avg	pf	fo	ast	to	blk	stl	pts	avg
2016-17	6-0	48/8.0	6-13	.462	4-8	.500	1-3	.333	0	6	6	1.0	4	0	5	7	0	3	17	2.8
2017-18	21-2	224/10.7	24-81	.296	20-69	.290	2-4	.500	1	22	23	1.1	22	0	8	13	1	10	70	3.3
2018-19	17-3	179/10.5	18-43	.419	7-29	.241	7-8	.875	6	19	25	1.5	14	0	15	10	0	14	50	2.9
TOTAL	44-5	451/10.3	48-137	.350	31-106	.292	10-15	.667	7	47	54	1.2	40	0	28	30	1	27	137	3.1

SINGLE-GAME HIGHS [all-time ranking]:

Points: 21, vs Ohio State -- 11/25/17

Rebounds: 6, Western Illinois -- 12/18/17

Assists: 5, Washington -- 1/18/19

Steals: 3, Washington -- 1/18/19; Western Illinois -- 12/18/17

Blocks: 1, CSU Bakersfield -- 11/19/17; CSU Bakersfield -- 11/19/17

FG made: 7, vs Ohio State -- 11/25/17

FG attempts: 17, Western Illinois -- 12/18/17

3FG made: 7, vs Ohio State -- 11/25/17

3FG attempts: 15, Western Illinois -- 12/18/17

FT made: 2, 5 times

FT attempts: 3, at Arizona -- 1/1/17

Official Basketball Box Score -- Game Totals -- Final Statistics
California vs Stanford
2/2/19 4:00 PM at Stanford, Calif. (Maples Pavilion)

California 50 • 14-7, 5-5

##	Player	Total FG-FGA	3-Ptr FG-FGA	FT-FTA	Rebounds			PF	TP	A	TO	Blk	Stl	Min
					Off	Def	Tot							
31	Kristine Anigwe	r 4-13	0-1	12-16	8	12	20	5	20	0	4	2	2	35
01	Asha Thomas	g 2-10	0-2	1-2	0	2	2	1	5	1	1	0	0	40
14	Kianna Smith	g 3-14	0-3	1-3	0	2	2	0	7	0	1	0	0	36
24	Recee' Caldwell	g 5-12	2-7	0-0	0	3	3	2	12	1	2	0	1	31
33	Jaelyn Brown	g 1-4	0-1	0-2	0	1	1	3	2	0	1	0	1	19
00	McKenzie Forbes	1-5	1-2	0-0	0	1	1	2	3	0	3	0	0	13
04	Alaysia Styles	0-1	0-1	1-2	0	1	1	0	1	0	0	0	2	12
00	Mo Mosley	0-0	0-0	0-0	0	0	0	0	0	0	0	0	0	2
30	CJ West	0-1	0-0	0-0	0	0	0	4	0	0	2	0	0	12
	Team				3	3	6				1			
Totals		16-60	3-17	15-25	11	25	36	17	50	2	15	2	6	200

1st - FG %: 2-18 11.1% 2nd: 2-11 18.2% 3rd: 6-18 33.3% 4th: 6-13 46.2% Game: 16-60 26.7% Deadball Rebounds 9
 3FG %: 0-5 0.0% 0-4 0.0% 1-4 25.0% 2-4 50.0% 3-17 17.6%
 FT %: 1-5 20.0% 8-11 72.7% 1-1 100.0% 5-8 62.5% 15-25 60.0%

Stanford 75 • 18-3, 8-2

##	Player	Total FG-FGA	3-Ptr FG-FGA	FT-FTA	Rebounds			PF	TP	A	TO	Blk	Stl	Min
					Off	Def	Tot							
11	Smith, Alanna	r 6-13	0-3	4-5	0	4	4	4	16	1	2	1	1	25
15	Dodson, Maya	r 4-6	0-0	1-2	2	2	4	4	9	1	1	3	0	21
24	Hull, Lacie	r 2-4	1-3	0-0	2	5	7	2	5	1	1	0	3	21
21	Carrington, DiJonai	g 7-15	3-4	2-4	0	5	5	4	19	0	1	1	0	30
23	Williams, Kiana	g 7-14	3-6	2-2	1	4	5	0	19	4	2	0	2	35
02	Coffee, Shannon	1-6	0-2	0-0	2	2	4	3	2	4	1	0	0	17
03	Wilson, Anna	0-1	0-1	0-0	0	2	2	1	0	1	1	0	0	14
10	Jerome, Alyssa	0-1	0-0	0-0	0	1	1	0	0	1	1	0	0	8
12	Hull, Lexie	1-1	1-1	0-0	1	4	5	2	3	0	1	0	0	15
14	Brewer, Mikaela	0-0	0-0	0-0	0	0	0	0	0	0	0	0	0	2
20	Moschkau, Estella	0-0	0-0	0-0	0	0	0	0	0	0	0	0	0	2
54	Brown, Jenna	1-1	0-0	0-0	0	0	0	2	2	1	1	0	0	10
	Team				2	2	4							
Totals		29-62	8-20	9-13	10	31	41	22	75	14	12	5	6	200

1st - FG %: 10-19 52.6% 2nd: 5-15 33.3% 3rd: 8-16 50.0% 4th: 6-12 50.0% Game: 29-62 46.8% Deadball Rebounds 2,3
 3FG %: 2-5 40.0% 2-7 28.6% 1-3 33.3% 3-5 60.0% 8-20 40.0%
 FT %: 0-1 0.0% 3-4 75.0% 2-2 100.0% 4-6 66.7% 9-13 69.2%

Officials: Julie Krommenhoek, Michol Murray, Penny Davis
 Technical fouls: California-None, Stanford-None.
 Attendance: 4066

Score by periods	1st	2nd	3rd	4th	Total
California	5	12	14	19	50
Stanford	22	15	19	19	75

	In	Off	2nd	Fast	Bench
Points	Paint	T/O	Chance	Break	
CAL	24	7	8	4	4
STAN	38	14	4	7	7

Last FG - CAL 4th-03:06, STAN 4th-00:52.
 Largest lead - CAL None, STAN by 29 4th-07:21.
 CAL led for 00:00. STAN led for 38:02. Game was tied for 01:58.

Score tied - 0 times.
 Lead changed - 0 times.

TV/RADIO ROSTER



#2
SHANNON COFFEE
C • 6-5 • SR
DAYTON, OHIO
CENTERVILLE



#3
ANNA WILSON
G • 5-9 • JR
SEATTLE, WASH.
BELLEVUE



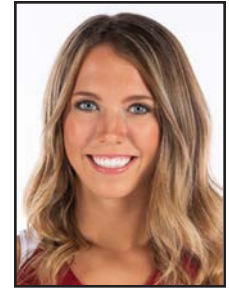
#4
NADIA FINGALL
F • 6-3 • JR
NAVARRE, FLA.
CHOCTAWHATCHEE



#10
ALYSSA JEROME
F • 6-3 • SO
TORONTO, CANADA
HARBORD COLLEGIATE



#11
ALANNA SMITH
F • 6-4 • SR
MELBOURNE, AUSTRALIA
WESLEY COLLEGE



#12
LEXIE HULL
F • 6-0 • FR
SPOKANE, WASH.
CENTRAL VALLEY



#13
MARTA SNIEZEK
G • 5-8 • SR
MCLEAN, VA.
NATIONAL CATHEDRAL [D.C.]



#14
MIKAELA BREWER
G • 5-10 • JR
BARRIE, ONTARIO, CANADA
INNISDALE SECONDARY



#15
MAYA DODSON
F • 6-3 • SO
ALPHARETTA, GA.
ST. FRANCIS



#20
ESTELLA MOSCHKAU
F • 6-1 • SO
MADISON, WIS.
EDGEWOOD



#21
DIJONAI CARRINGTON
G • 5-11 • JR
SAN DIEGO, CALIF.
HORIZON CHRISTIAN



#23
KIANA WILLIAMS
G • 5-8 • SO
SAN ANTONIO, TEXAS
KAREN WAGNER



#24
LACIE HULL
F • 6-1 • FR
SPOKANE, WASH.
CENTRAL VALLEY



#54
JENNA BROWN
G • 5-10 • FR
ATLANTA, GA.
THE LOVETT SCHOOL



TARA VANDERVEER
HEAD COACH
33RD YEAR



KATE PAYE
ASSOCIATE HEAD COACH
12TH YEAR



TEMPIE BROWN
ASSISTANT COACH
SIXTH YEAR



LINDY LA ROCQUE
ASSISTANT COACH
SECOND YEAR