



GOSTANFORD.COM • #GOSTANFORD



2018-19 SCHEDULE AND RESULTS

NOVEMBER

1	Vanguard (Ex.)	W, 87-36
7	UC Davis	W, 71-43
11	Idaho	W, 115-71
15	San Francisco	W, 96-62
18	Ohio State (P12N)	canceled
23	vs. FGCU (1)	W, 88-65
24	vs. American (1)	W, 71-49
25	at Hawaii (1)	W, 81-59

DECEMBER

2	at Gonzaga	L, 73-79
15	#3/4 Baylor (P12N)	W, 68-63
18	at #9/9 Tennessee (SECN)	6 p.m. ET
21	at Buffalo	noon ET
29	CSUN	2 p.m.

JANUARY

4	USC * (P12N)	8 p.m.
6	UCLA * (P12N)	1 p.m.
11	at Arizona State * (P12N)	7 p.m. MT
13	at Arizona * (P12N)	noon MT
18	Washington * (P12N)	7 p.m.
20	Washington State * (P12N)	noon
25	at Colorado * (P12N)	7 p.m. MT
27	at Utah *	noon MT
31	at California * (P12N)	8 p.m.

FEBRUARY

2	California * (P12N)	4 p.m.
8	Oregon State * (P12N)	6 p.m.
10	Oregon * (ESPN2)	1 p.m.
15	at UCLA * (P12N)	6 p.m.
17	at USC * (P12N)	noon
22	Arizona *	7 p.m.
24	Arizona State * (P12N)	1 p.m.

MARCH

1	at Washington State * (P12N)	7 p.m.
3	at Washington * (P12N)	2 p.m.
7-10	Pac-12 Tournament (2)	TBD

(1) - Rainbow Wahine Showdown; Honolulu, Hawaii

(2) - Pac-12 Tournament; Las Vegas, Nev.

\* - Pac-12 game;

All times local and subject to change;

Home games in Bold;

[#/#] - Indicates national ranking (AP/USA Today)

(P12N) - Game televised on Pac-12 Networks

(ESPN2/SECN) - Game televised on ESPN family of networks

Athletic Communications

Director ..... John Cantalupi  
 Cell Phone ..... (650) 924-8304  
 E-Mail ..... johncan@stanford.edu

**THE GAME:** No. 8 Stanford (7-1) continues its storied rivalry with No. 9 Tennessee (8-0) in Thompson-Boling Arena on Tuesday, Dec. 18 at 6 p.m. ET. Pam Ward and Carolyn Peck have the call on the SEC Network and Tim Swartz will handle the radio broadcast on GoStanford.com.

**THE RUNDOWN:** Stanford is coming off its first regular-season win against a top-five team since 2014 and is now 9-1 in its last 10 home games against top-five opponents ... The Cardinal is 17th in the country in scoring offense (82.9) and 15th nationally in field goal percentage (.477) ... Stanford has won just twice in Knoxville, in 2012 and 1996 ... The Cardinal is seventh in the country, averaging 10.6 3-point makes per game and 13th in 3-point percentage, making 39.7 percent ... Alanna Smith is the only player in the nation shooting better than 57 percent from the floor and 50 percent from behind the arc and was named both espnW and Pac-12 Player of the Week on Monday ... Lacie Hull earned the first start of her career on Dec. 2 at Gonzaga, is seventh in the conference, averaging 2.25 steals per game ... Stanford has two of the top four shooters from the floor in the Pac-12 this season in Alanna Smith (.578) and Maya Dodson (.571) ... Smith (Australia), Jenna Brown (United States) and Alyssa Jerome (Canada) all represented their countries in international competition this summer ... The nation's consensus No. 1 recruit, Haley Jones, announced her commitment to Stanford on Nov. 28, the first top player to sign with the Cardinal since Chiney Ogumike in Nov. 2009.

STANFORD AT A GLANCE

Game 9

Overall Record .....	7-1
Pac-12 Record .....	0-0
Home Record .....	4-0
Road Record .....	1-1
Neutral Record .....	2-0

HEAD COACH TARA VANDERVEER

Stanford Record (33rd year) .....	891-192
Career Record (40th year) .....	1,043-243
All-Time vs. Tennessee .....	10-25

SERIES HISTORY

All-Time vs. Tennessee .....	10-25
At Stanford .....	8-6
At Tennessee .....	2-13
Streak .....	Tennessee, 2
Last Stanford Win .....	12/16/15 (69-55 @STAN)
Last Tennessee Win .....	12/21/17 (83-71 @ STAN)

**VS. TENNESSEE:** Stanford is 10-25 all-time against the Lady Vols, but has won four of the last seven. Eight of Stanford's 10 wins have come in Maples Pavilion. Its two road victories in Knoxville came on Dec. 22, 2012 (73-60) and Dec. 15, 1996 (82-65). Following an 11-game Lady Vol win streak from 1997-2006, Stanford is 6-6 against Tennessee since 2007. Jamie Nared scored 28 points to lead Tennessee to a 83-71 win last season at Stanford. The Cardinal lost 59-51 in its last trip to Knoxville in 2016.

STANFORD PROBABLE STARTERS

No.	Player	Pos.	Ht.	Yr.	PPG	RPG	APG
4	Nadia Fingall	F	6-3	Jr.	9.1	5.0	2.0
11	Alanna Smith	F	6-4	Sr.	18.5	6.4	1.6 (BPG)
21	DiJonai Carrington	G	5-11	Jr.	9.9	5.0	2.1
23	Kiana Williams	G	5-8	So.	15.0	2.0	4.4
24	Lacie Hull	F	6-1	Fr.	43.9	2.4	2.3 (SPG)

STANFORD OFF THE BENCH

No.	Player	Pos.	Ht.	Yr.	PPG	RPG	APG
2	Shannon Coffee	C	6-5	Sr.	2.0	0.9	0.4
3	Anna Wilson	G	5-9	Jr.	3.3	2.1	1.0
10	Alyssa Jerome	F	6-3	So.	4.0	3.8	0.5
12	Lexie Hull	F	6-0	Fr.	10.7	7.0	2.7 (SPG)
13	Marta Snizek	G	5-8	Sr.	--	--	--
14	Mikaela Brewer	G	5-10	Jr.	1.5	0.3	0.0
15	Maya Dodson	F	6-3	So.	8.0	3.9	1.8 (BPG)
20	Estella Moschkau	F	6-1	So.	1.8	0.2	0.3
22	Alexa Romano	G	5-10	Sr.	1.1	0.3	0.1
54	Jenna Brown	G	5-10	Fr.	2.4	1.5	1.3

**QUICK FACTS****The University**

Location ..... Stanford, Calif.  
 Founded..... 1891  
 Enrollment..... 16,424 (7,056 undergraduate)  
 Nickname..... Cardinal  
 Colors..... Cardinal and White  
 Affiliation ..... NCAA Division I  
 Conference ..... Pac-12  
 President ..... Marc Tessier-Lavigne  
 Provost..... Persis Drell  
 Director of Athletics..... Bernard Muir  
 Faculty Representative ..... Jeff Koseff  
 Senior Women's Administrator..... Beth Goode  
 Athletic Department Phone ..... 650-723-4591  
 Ticket Office Phone ..... 800-STANFORD  
 Home Facility..... Maples Pavilion  
 Capacity ..... 7,233  
 Web Site ..... www.gostanford.com

**Stanford Women's Basketball History**

First Year ..... 1974-75 (45 seasons)  
 All-Time Record ..... 1,067-330 (.764)  
 All-Time Pac-12 (since 1986-87) ..... 500-75 (.870)  
 NCAA Championships ..... 2 (1990, 1992)  
 NCAA Tournament Appearances ..... 32 (86-30)  
 Last NCAA Tournament Appearance ..... 2018  
 NCAA Final Four Appearances ..... 13  
 Last NCAA Final Four Appearance ..... 2017

**Staff Information**

Head Coach ..... Tara VanDerveer (33rd season)  
 Alma Mater ..... Indiana, 1975  
 Stanford Record ..... 891-192/33 seasons  
 Career Record..... 1,043-243/40 seasons  
 Associate Head Coach..... Kate Paye (12th season)  
 Alma Mater ..... Stanford, 1995  
 Assistant Coach ..... Tempie Brown (sixth season)  
 Alma Mater ..... Michigan, 1990  
 Assistant Coach ..... Lindy La Rocque (second season)  
 Alma Mater ..... Stanford, 2012  
 Operations ..... Eileen Roche (Ohio Wesleyan '81)  
 Administrator..... Amy Tucker (Ohio State, '82)  
 Video Coordinator ..... Hana Potter (Washington St. '14)  
 Athletic Trainer ..... Katelin Knox (Santa Clara '09)  
 Sports Performance ..... Brittany Keil (Holy Cross '07)  
 Basketball Office Phone..... (650) 723-0284

**Team Information**

Letterwinners Returning/Lost .....12/2  
 Starters Returning/Lost .....3/2  
 Newcomers.....3  
 2017-18 Record.....24-11  
 Home .....14-2  
 Away .....6-5  
 Neutral.....4-4  
 2017-18 Conference Record .....14-3  
 Finish ..... 2nd

**STORIED RIVALRY IN DEPTH »**

- Thursday's match-up will be the 36th all-time in a series that began December 1988, when the Cardinal traveled to Knoxville and lost to the Lady Volunteers, 83-60.
- The teams have met annually since, in some cases twice a year and in the case of 1990-91, three times. Tennessee took control with an 11-game winning streak from 1997-2006, but since a 73-69 overtime win on Dec. 22, 2007, Stanford has won four of the past seven and five of the past nine.
- Stanford's loss to an unranked Tennessee team in its last visit to Knoxville in 2016 was just the second time both were not in the AP top 25 at the time of the game. On Dec. 19, 1998, No. 2 Tennessee beat an unranked Cardinal squad in Knoxville, 98-62.
- Their meeting in Maples Pavilion in Dec. 2015 was the first time in the series between the schools that neither was ranked in the top 10. Stanford was No. 15 and the Lady Vols were No. 14.
- Including Tuesday, the two have met as ranked opponents 34 times. This will be the first top-10 matchup between the two since No. 6 Stanford beat No. 3 Tennessee, 76-70, on Dec. 21, 2013.
- Stanford won its first of two national titles in Knoxville, knocking off Auburn 88-81 on April 4, 1990.
- Eight of Stanford's 10 wins have come in Maples Pavilion. Its two road victories in Knoxville came on Dec. 22, 2012 (73-60) and Dec. 15, 1996 (82-65).

**WHAT JUST HAPPENED? »**

- Alanna Smith had 21 points, Shannon Coffee made a key 3-pointer late in the fourth quarter and Stanford held on to beat previously undefeated and then-No. 3 Baylor 68-63 on Saturday afternoon.
- The win was the Cardinal's first in the regular season against a top-five team since it ended No. 1 UConn's 47-game winning streak in overtime, 88-86, on Nov. 17, 2014.
- Stanford is now 9-1 in its last 10 home game against top-five opponents.
- The 6-foot-5 Coffee set season highs with nine points and 19 minutes and made three of her four 3-point attempts. The senior has made 12 from deep in her career and seven have come against Baylor. She was 4-of-8 last season in an 81-57 loss in Waco.
- Coupled with Smith's 5-of-9 effort from behind the arc, the Cardinal's two tallest players were a combined 8-of-13 (.615) from distance.
- Baylor, which entered the game leading the nation in field goal percentage (.557), shot just 34.9 percent (22-of-63) against the Cardinal, its lowest since losing 88-69 to Notre Dame in the Elite Eight on March 31, 2014 (.338).
- Kalani Brown (16.4 ppg) and Lauren Cox (12.3 ppg), who came in averaging nearly 30 combined points per game, together went for just seven points on just 3-of-11 shooting (.273). Brown came into the day leading the NCAA's active players in field goal percentage (.648) made only two of her seven attempts from the floor, the third-lowest percentage of her career when attempting at least five shots.
- The win was Stanford's 15th in a row at home, the 10th-longest active streak in the nation.

**LONE LOSS »**

- Stanford started the season 6-0, its best since winning its first 11 games in 2012-13.
- The Cardinal's loss at Gonzaga on Dec. 2 was its third to a WCC team in the nonconference in the last four seasons. Gonzaga won at Stanford, 68-63, on Nov. 18, 2016 and Santa Clara beat the Cardinal in Maples on Nov. 23, 2015, 61-58.
- Gonzaga shot 54.2 percent from the floor (26-of-48) in its most recent victory, the best for a Stanford opponent since No. 22 DePaul made 59.6 percent (31-of-52) in a 91-71 win on Dec. 16, 2010.

**2018-19 STANFORD ROSTER**

No.	Player	Pos.	Ht.	Yr.	Major	Hometown (High School)
2	Shannon Coffee	C	6-5	Sr.	Human Biology	Dayton, Ohio (Centerville)
3	Anna Wilson	G	5-9	Jr.	Art Practice	Seattle, Wash. (Bellevue)
4	Nadia Fingall	F	6-3	Jr.	Human Biology	Navarre, Fla. (Choctawhatchee)
10	Alyssa Jerome	F	6-3	So.	Undeclared	Toronto, Ontario, Canada (Harbord Collegiate)
11	Alanna Smith	F	6-4	Sr.	Psychology	Melbourne, Victoria, Australia (Wesley College)
12	Lexie Hull	F	6-0	Fr.	Undeclared	Spokane, Wash. (Central Valley)
13	Marta Sniezek	G	5-8	Sr.	American Studies	McLean, Va. (National Cathedral [D.C.])
14	Mikaela Brewer	G	5-10	Jr.	Human Biology	Barrie, Ontario, Canada (Innisdale Secondary)
15	Maya Dodson	F	6-3	So.	Undeclared	Alpharetta, Ga. (St. Francis)
20	Estella Moschkau	F	6-1	So.	Undeclared	Madison, Wis. (Edgewood)
21	DiJonai Carrington	G	5-11	Jr.	Psychology • African & African American Studies	San Diego, Calif. (Horizon Christian)
22	Alexa Romano	G	5-10	Sr.	Anthropology	Albuquerque, N.M. (La Cueva)
23	Kiana Williams	G	5-8	So.	Undeclared	San Antonio, Texas (Karen Wagner)
24	Lacie Hull	F	6-1	Fr.	Undeclared	Spokane, Wash. (Central Valley)
54	Jenna Brown	G	5-10	Fr.	Undeclared	Atlanta, Ga. (The Lovett School)

**TEMPIE** Brown (TEMP-ee)  
**DIJONAI** Carrington (dijon-NAY)  
 Nadia **FINGALL** (FING-gull)

Estella **MOSCHKAU** (MOSS-cow)  
**ALANNA** Smith (uh-LAN-uh)  
 Marta **SNIEZEK** (SNEEZE-ick)  
**TARA VANDERVEER** (TAR-uh van-DER-veer)

**STANFORD'S RECORD WHEN**

Category	H	R	N	O
Scoring First	3-0	1-1	1-0	5-1
Opponent Scores First	1-0	0-0	1-0	2-0
Lead at Half	4-0	1-0	2-0	7-0
Trail at Half	0-0	0-1	0-0	0-1
Tied at Half	0-0	0-0	0-0	0-0
Overtime	0-0	0-0	0-0	0-0
vs. Top 25	1-0	0-0	0-0	1-0
Decided by 1-4 Points	0-0	0-0	0-0	0-0
Decided by 5-9 Points	1-0	0-1	0-0	1-1
Decided by 10+ Points	3-0	1-0	2-0	6-0
Scoring 100+	1-0	0-0	0-0	1-0
Scoring 90-99	1-0	0-0	0-0	1-0
Scoring 80-89	0-0	1-0	1-0	2-0
Scoring 70-79	1-0	0-1	1-0	2-1
Scoring 60-69	1-0	0-0	0-0	1-0
Scoring 50-59	0-0	0-0	0-0	0-0
Scoring 40-49	0-0	0-0	0-0	0-0
Opp. Scoring 90-99	0-0	0-0	0-0	0-0
Opp. Scoring 80-89	0-0	0-0	0-0	0-0
Opp. Scoring 70-79	1-0	0-1	0-0	1-1
Opp. Scoring 60-69	2-0	0-0	1-0	3-0
Opp. Scoring 50-59	0-0	1-0	0-0	1-0
Opp. 49 or Fewer	1-0	0-0	1-0	2-0
50%-plus FG Pct.	2-0	1-0	1-0	4-0
40-49.9% FG Pct.	1-0	0-1	1-0	2-1
39.9%-minus FG Pct.	1-0	0-0	0-0	1-0
Opp. 50%-plus FG Pct.	0-0	0-1	0-0	0-1
Opp. 40-49.9% FG Pct.	1-0	1-0	0-0	2-0
Opp. 39.9%-minus	3-0	0-0	2-0	5-0
Better FG% than Opp.	4-0	1-0	2-0	7-0
FG% is Equal	0-0	0-0	0-0	0-0
Opp. Better FG%	0-0	0-1	0-0	0-1
80%-plus FT Pct.	0-0	0-0	0-0	0-0
70-79% FT Pct.	1-0	1-0	1-0	3-0
69%-minus FT Pct.	3-0	0-1	1-0	4-1
Better FT% than Opp.	2-0	0-0	0-0	2-0
FT% is Equal	0-0	0-0	0-0	0-0
Opp. Better FT%	2-0	1-1	2-0	5-1
Outrebounding Opp.	2-0	1-0	2-0	5-0
Rebounds are Equal	0-0	0-0	0-0	0-0
Outrebounded by Opp.	2-0	0-1	0-0	2-1
Fewer TO than Opp.	3-0	1-1	1-0	5-1
Turnovers are Equal	0-0	0-0	0-0	0-0
More TO than Opp.	1-0	0-0	1-0	2-0
6 in Double Figures	1-0	0-0	0-0	1-0
5 in Double Figures	0-0	0-0	0-0	0-0
4 in Double Figures	1-0	0-0	0-0	1-0
3 in Double Figures	2-0	0-1	2-0	4-1
2 in Double Figures	0-0	1-0	0-0	1-0
1 in Double Figures	0-0	0-0	0-0	0-0
Bench Scores More	1-0	1-0	1-0	3-0
Opp. Bench Scrs. More	2-0	0-1	1-0	3-1
Wearing Black	0-0	1-1	1-0	2-1
Wearing White	3-0	0-0	1-0	4-0
Wearing Cardinal	0-0	0-0	0-0	0-0

**SEASON SNAPSHOT »**

- The Cardinal is 17th in the country in scoring offense (82.9) and 21st in scoring margin (+21.5).
- Stanford hasn't averaged more than 75.0 points per game since 2013-14 and has averaged 68.7 (2017-18), 68.8 (2015-16) and 69.3 (2014-15) in three of the last four years. Those are three of the five lowest scoring offenses for a Tara VanDerveer team at Stanford, behind 1985-86 (66.6) and 1986-87 (67.8).
- Stanford is 15th nationally in field goal percentage (.477) and 12th in assist-to-turnover ratio (1.37). Those categories are just a couple of many where the Cardinal has seen a marked improvement year-over-year. Last season, Stanford was 87th in field goal percentage (.424) and 126th in assist-to-turnover ratio (0.93).
- Stanford returns 77 percent of its minutes played from 2017-18, the fourth most among top 25 programs at the end of last season according to Her Hoop Stats' overall rating, which takes strength of schedule into account.
- Arizona State returns 97 percent, Virginia Tech 91 percent and Louisville 82 percent. South Carolina also welcomes back 77 percent of its minutes played.
- The Cardinal made its 11th consecutive trip to the Sweet 16 last season, posting a 24-11 overall record and a 14-3 mark in Pac-12 play. Stanford won at least 20 games for the 17th straight season and 29th overall and had double-digit Pac-12 victories for the 31st consecutive year.

**AGAINST RANKED »**

- The Cardinal, 1-0 against ranked teams this season with its win over Baylor, was 4-9 against ranked foes last year and has won multiple games against top 25 opponents for each of the last 16 seasons.
- Stanford is 76-43 (.639) against AP ranked opponents since 2007-08, fifth in the country in such wins the past 12 years and fourth in percentage.
- Connecticut (.903), Baylor (.761), Notre Dame (.733), Stanford (.639), Tennessee (.611), Duke (.550) and Maryland (.534) are the only teams with winning records against ranked teams over that span.

**SHARP SHOOTERS »**

- Stanford is seventh in the country, averaging 10.6 3-point makes per game and 13th in 3-point percentage, making 39.7 percent.
- Stanford's 16 3-pointers on Nov. 11 against Idaho tied a program single-game record also achieved at UCLA on Feb. 24, 2002 and at Washington on Feb. 24, 2001.
- The Cardinal made 31.9 percent of its attempts from behind the arc last season, the second-worst percentage in program history. Stanford also was a program-low 42.4 percent overall in 2017-18.
- Stanford won that game against Idaho 115-71, its fifth-highest point total ever and most since tying a school record with 122 against Cal State Fullerton on Dec. 10, 1994.

**FOUR TO THE FARM »**

- Stanford bolstered an already strong recruiting class for next season with the addition of the nation's consensus No. 1 recruit, Haley Jones (Santa Cruz, Calif./Archbishop Mitty), who committed on Nov. 28.
- Jones joined the earlier signings of top-50, five-star talents Fran Belibi (Aurora, Colo./Regis Jesuit), Hannah Jump (Los Altos Hills, Calif./Pinewood School) and Ashten Prechtel (Colorado Springs, Colo./Discovery Canyon) in Stanford's class, which is ranked second nationally by espnW HoopGurlz.
- Jones is the first No. 1 prospect to sign with Stanford since Chiney Ogwumike came to The Farm as the top player in the country in Nov. 2009. She is also the first woman to have her college commitment covered by ESPN and SportsCenter.

**SO INTERNATIONAL »**

- Alanna Smith, Jenna Brown and Alyssa Jerome all represented their countries across the globe in various tournaments this summer.
- Smith, the program's first international student, became the sixth Stanford player to appear in a FIBA World Cup in helping Australia to a silver medal in late September. The senior was one of two Stanford players at the tournament in Tenerife, Spain along with alumna Nneka Ogwumike (United States) and was a late arrival to campus for the fall quarter. Classes started on September 24.
- It was the 22-year-old's second go-around with the Senior Women's National Team. She made her debut and won silver at the 2017 FIBA Asia Cup in Bangalore, India and was one of two Australian players to score in double figures, averaging 10.8 points on 58.3 percent shooting and 5.3 rebounds.
- Brown and the USA Basketball U18 National Team won gold at the FIBA Americas U18 Championship in Mexico City in early August. The freshman averaged 7.5 points on 57.1 percent shooting, 2.8 assists and 2.3 rebounds in six games. She had her best performance in the semifinals against Colombia, going for a team-high 17 points on 6-of-7 shooting, including hitting three of her four 3-point attempts.
- In her first taste of FIBA competition two years ago, Brown took home bronze alongside current Cardinal Maya Dodson at the 2016 FIBA U17 World Cup in Zaragoza Spain.
- Jerome was the youngest player on Canada's Senior Women's National Team roster that participated in a four-game exhibition series in China and Japan from August 1-7.

**VANDERVEER'S HEAD COACHING CAREER**

Year	School	Overall	Post.
1978-79	Idaho	17-8	
1979-80	Idaho	25-6	AIAW Championships
1980-81	Ohio State	17-15	---
1981-82	Ohio State	20-7	NCAA First Round
1982-83	Ohio State	23-5	---
1983-84	Ohio State	22-7	NCAA First Round
1984-85	Ohio State	28-3	NCAA Elite 8
1985-86	Stanford	13-15	---
1986-87	Stanford	14-14	---
1987-88	Stanford	27-5	NCAA Sweet 16
1988-89	Stanford	28-3	NCAA Elite 8
1989-90	Stanford	32-1	NCAA Champions
1990-91	Stanford	26-6	NCAA Final Four
1991-92	Stanford	30-3	NCAA Champions
1992-93	Stanford	26-6	NCAA Sweet 16
1993-94	Stanford	25-6	NCAA Elite 8
1994-95	Stanford	30-3	NCAA Final Four
1995-96	Stanford	---	USA Head Coach
1996-97	Stanford	34-2	NCAA Final Four
1997-98	Stanford	21-6	NCAA First Round
1998-99	Stanford	18-12	NCAA First Round
1999-00	Stanford	21-9	NCAA Second Round
2000-01	Stanford	19-11	NCAA Second Round
2001-02	Stanford	32-3	NCAA Sweet 16
2002-03	Stanford	27-5	NCAA Second Round
2003-04	Stanford	27-7	NCAA Elite 8
2004-05	Stanford	32-3	NCAA Elite 8
2005-06	Stanford	26-8	NCAA Elite 8
2006-07	Stanford	29-5	NCAA Second Round
2007-08	Stanford	35-4	NCAA Runner-Up
2008-09	Stanford	33-5	NCAA Final Four
2009-10	Stanford	36-2	NCAA Runner-Up
2010-11	Stanford	33-3	NCAA Final Four
2011-12	Stanford	35-2	NCAA Final Four
2012-13	Stanford	33-3	NCAA Sweet 16
2013-14	Stanford	33-4	NCAA Final Four
2014-15	Stanford	26-10	NCAA Sweet 16
2015-16	Stanford	27-8	NCAA Elite 8
2016-17	Stanford	32-6	NCAA Final Four
2017-18	Stanford	24-11	NCAA Sweet 16
2018-19	Stanford	7-1	

**1,043-243****COACHING HIGHLIGHTS**

- The second-winningest coach in women's college basketball history and was the second to reach 1,000 career wins (Feb. 3, 2017 vs. USC).
- Possesses the sixth-highest career winning percentage (.811) among Division I women's basketball coaches all-time.

**HONORS AND AWARDS**

- Naismith Memorial Basketball Hall of Fame ('11)
- Women's Basketball Hall of Fame ('02)
- Two NCAA Championships (1990, 1992)
- Head of the 1996 U.S. Olympic Team (Gold)
- 60-0 record with USA Olympic Team in 1995-96
- 88-8 record (.917) as USA Basketball Head Coach
- 12 NCAA Final Fours
- 22 regular-season Pac-12 titles
- Four-time National Coach of the Year
- 15-time Pac-12 Coach of the Year
- Two-time Big Ten Coach of the Year

**SUMMERS OFF THE FLOOR »**

- Senior center Shannon Coffee spent her summer interning with the Stanford Center for Clinical Research, working on a study to address growing concerns over concussions in sports through research and data collection.
- The project involved mouthguards developed by engineers at Stanford with the ability to track impact, force and more in collisions between high school football players.
- Senior guard Alexa Romano was in Peru all summer as part of an archaeological excavation and research team led by Stanford professor Dr. John Rick at a UNESCO World Heritage Site in the Andes.
- It was Romano's second academically-oriented international trip with Stanford. Two summers ago she spent three weeks in India as part of The Rubenstein-Bing Student-Athlete Civic Engagement Program, serving as a coaching assistant for sports activities, taught English as a second language courses and promoted computer literacy initiatives for youth at a community center in Dakshinipuri, New Delhi.

**FROM DOWN UNDER »**

- Alanna Smith is on a laundry of preseason watch lists, including the Naismith Trophy, Wade Trophy, John R. Wooden Award, Katrina McClain Award and Senior CLASS Award and also was selected to the preseason All-Pac-12 Team as voted on by the media who regularly cover the conference.
- The reigning espnW and Pac-12 Player of the Week, this season Smith is shooting 57.8 percent from the field (52-of-90), 50.0 percent from behind the arc (21-of-42) and averaging a team-high 18.5 points per game to go with 6.4 rebounds.
- She is the only player in the nation shooting better than 57 percent from the floor and 50 percent from deep using NCAA minimums of five made field goals per game and two made 3-pointers per game.
- Smith is second in the conference and 30th in the country in field goal percentage, fifth in the Pac-12 and 12th in the country in 3-point percentage, seventh in the league in scoring and leads the nation's 6-foot-4 players in 3-point percentage and 3-pointers made.
- She is 33rd in school history in scoring (1,152) and seventh in blocks (160).
- In the Cardinal's win over San Francisco on Nov. 15, Smith had 18 points, seven rebounds, three assists, four blocks and five made 3-pointers. She is the eighth player with those numbers in a single game in the past 20 years and the only one to do it in less than 30 minutes (26).
- Smith has made 95 career 3-pointers, more than any other player her height since 2015-16. Six-foot-4 Courtney Zezza on Saint Francis has made 79 over the past four years.

**WATCH WILLIAMS »**

- Kiana Williams is also on a handful of watch lists for the Naismith Trophy, John R. Wooden Award and Ann Meyers Drysdale Award.
- The sophomore is second on the team in scoring (15.0 points per game) and makes an average of 2.88 3-pointers per outing, good for fifth in the league. Her 71 made triples a year ago are the second most for a Stanford freshman in program history.
- Williams had a standout freshman campaign in 2017-18, was named All-Pac-12 honorable mention and also landed on the Pac-12 All-Freshman and Pac-12 All-Tournament teams. Twenty-six players were voted either All-Pac-12 or all-conference honorable mention last season and Stanford's dynamic playmaker was the only freshman among them.

**VANDERVEER'S CAREER MILESTONES**

<b>Win #1</b>	Dec. 1, 1978 Idaho vs. Northern Montana, 70-68	<b>Win #1 at Stanford</b>	Nov. 22, 1985 vs. Hawaii, 68-65
<b>Win #100</b>	Feb. 27, 1983 Ohio State vs. Michigan, 74-60	<b>Win #100 at Stanford</b>	Jan. 27, 1990 vs. Arizona State, 90-63
<b>Win #200</b>	Feb. 12, 1988 Stanford vs. Washington, 70-66	<b>Win #200 at Stanford</b>	Dec. 18, 1993 vs. SW Missouri St., 74-63
<b>Win #300</b>	Dec. 20, 1991 Stanford vs. Southern Illinois, 82-63	<b>Win #300 at Stanford</b>	Feb. 14, 1998 vs. USC, 91-63
<b>Win #400</b>	March 16, 1995 Stanford vs. UC Irvine (NCAA), 88-55	<b>Win #400 at Stanford</b>	Nov. 30, 2002 vs. Kansas State, 63-57
<b>Win #500</b>	Nov. 26, 2000 Stanford vs. Pacific, 73-65	<b>Win #500 at Stanford</b>	Feb. 11, 2006 at California, 55-46
<b>Win #600</b>	March 20, 2004 Stanford vs. Missouri, 68-44	<b>Win #600 at Stanford</b>	March 14, 2009 vs. UCLA, 73-47 (at Los Angeles, Calif.)
<b>Win #700</b>	Dec. 28, 2007 Stanford vs. Washington State, 105-47	<b>Win #700 at Stanford</b>	Feb. 25, 2012 vs. Utah, 69-42
<b>Win #800</b>	Dec. 22, 2010 Stanford at San Francisco, 100-45	<b>Win #800 at Stanford</b>	March 21, 2015 vs. CSUN, 73-60
<b>Win #900</b>	Nov. 27, 2013 Stanford vs. FGCU, 83-59 (Puerto Vallarta, Mexico)		
<b>Win #1,000</b>	Feb. 3, 2017 Stanford vs. USC, 58-42		



**IN THE POLLS**

**ASSOCIATED PRESS TOP 25**  
(Released December 17)

School	Record	Points
1 Connecticut (31)	9-0	775
2 Notre Dame	9-1	738
3 Louisville	11-0	712
4 Mississippi State	10-0	681
5 Maryland	10-0	632
6 Baylor	8-1	585
7 Oregon	8-1	583
<b>8 Stanford</b>	<b>7-1</b>	<b>561</b>
9 Tennessee	8-0	558
10 North Carolina State	11-0	510
11 Oregon State	8-2	429
12 Texas	8-2	390
13 Minnesota	10-0	387
14 California	9-0	386
15 Syracuse	8-2	337
16 Iowa	8-2	303
17 Arizona State	8-2	227
18 Kentucky	10-1	215
19 Marquette	8-2	191
20 DePaul	7-3	185
21 Gonzaga	10-1	148
22 Michigan State	9-1	134
23 Texas A&M	8-2	98
24 Miami (FL)	9-2	95
25 South Carolina	6-4	66

**OTHERS RECEIVING VOTES:** Iowa St. 22, South Dakota 22, Florida St. 21, Virginia Tech 21, South Florida 19, Missouri 13, Indiana 11, Georgia 8, Utah 5, Southern Cal 4, West Virginia 1, Drake 1, South Dakota St. 1.

**USA TODAY COACHES TOP 25**  
(Released December 11)

School	Record	Points
1 Connecticut (32)	9-0	800
2 Notre Dame	8-1	754
3 Louisville	10-0	728
4 Baylor	7-0	701
5 Mississippi State	9-0	679
6 Maryland	10-0	631
7 Oregon	7-1	589
8 Oregon State	7-1	575
9 Tennessee	8-0	566
10 North Carolina State	10-0	520
<b>11 Stanford</b>	<b>6-1</b>	<b>457</b>
12 Texas	7-2	407
13 California	8-0	371
14 Syracuse	8-2	337
15 Iowa	7-2	284
16 Minnesota	9-0	276
16 Marquette	7-2	276
18 DePaul	7-3	232
19 Arizona State	7-2	226
20 Kentucky	9-1	216
21 Gonzaga	9-1	158
22 Michigan State	8-1	92
22 Miami (FL)	8-2	92
24 Missouri	8-2	81
25 Drake	8-2	59

**OTHERS RECEIVING VOTES:** USC 53; South Carolina 46; Florida State 44; South Florida 30; Virginia Tech 29; Texas A&M 23; UAB 12; South Dakota 12; South Alabama 10; Kansas 9; Iowa State 7; Indiana 6; South Dakota State 3; West Virginia 3; UCF 2; Michigan 2; New Mexico 2.

**INCREASED CONTRIBUTIONS »**

- Six-foot-3 posts Nadia Fingall and Maya Dodson have played major roles in Stanford's 7-1 start.
- A junior, Fingall has started each game and is averaging 9.1 points and 5.0 rebounds. She's shooting 52.6 percent from the field (30-of-57) and dropped in a career-high 24 points on 11-of-14 shooting in Stanford's 88-65 win against FGCU in Hawaii on Nov. 23 to go along with another personal best five assists. Fingall averaged 3.3 points on 44.6 percent shooting and 3.1 rebounds a year ago.
- Dodson similarly has upped her game as a sophomore and is scoring 8.0 points on 57.1 percent shooting from the floor and leads the conference in blocks per game (1.75). As a freshman, Dodson scored 3.5 points per game on 49.5 percent shooting.
- Dodson is fourth in the league in field goal percentage, just behind Alanna Smith (.578) according to the Pac-12's stats, which have different minimums than the NCAA.
- Fingall, who had 19 assists in 34 games a year ago, already has 16 this season. Dodson has 12 in 165 minutes this year after just five in 372 minutes as a freshman in 2017-18.

**TWIN TREES »**

- Sisters Lexie (25.7 minutes per game) and Lacie Hull (23.0 minutes per game) have played big roles in the early going and are Stanford's third and fourth most utilized players in terms of minutes played.
- Lexie, who has missed the past four games with a left foot injury, started the season's first three games and averaged 10.7 points, 7.0 rebounds and 2.7 steals. She had an 11-point, 11-rebound double-double in the season opener against UC Davis and is believed to be the first freshman in Stanford history to record a double-double in her debut.
- Lacie finished off the team's Rainbow Wahine Showdown with a pair of strong performances. Her seven steals on Nov. 24 against American were the most for a Stanford player since Candice Wiggins had the same number in a win over Old Dominion on Nov. 24, 2007.
- She followed that up with of eight points, six assists and two blocks on Nov. 25 against Hawaii and scored nine points in her first career start at Gonzaga on Dec. 2.
- Lacie is seventh in the conference, averaging 2.25 steals per game, and has 15 assists against just seven turnovers (2.14 assist-to-turnover ratio). Candice Wiggins is the only Stanford player to average 2.0 steals per game in a season over the past 20 years. She did it three times: 2004-05 (2.43), 2007-08 (2.15) and 2005-06 (2.00).

**STANFORD BY THE NUMBERS**

DOUBLE-DOUBLES	2018-19	CAREER	LED IN REBOUNDING (+TIES)	2018-19	CAREER
Alanna Smith	0	10	Alanna Smith	5	22
DiJonai Carrington	0	2	DiJonai Carrington	1	9
Lexie Hull	1	1	Nadia Fingall	2	7
			Marta Sniezek	0	4
			Lexie Hull	1	1
			Kiana Williams	0	1
DOUBLE-FIGURE POINTS	2018-19	CAREER	LED IN ASSISTS (+TIES)	2018-19	CAREER
Alanna Smith	7	52	Marta Sniezek	0	61
Kiana Williams	6	25	Kiana Williams	5	11
DiJonai Carrington	5	18	DiJonai Carrington	1	6
Nadia Fingall	3	14	Kaylee Johnson	0	3
Marta Sniezek	0	9	Nadia Fingall	1	3
Alexa Romano	0	3	Maya Dodson	1	1
Anna Wilson	1	4	Lacie Hull	1	1
Shannon Coffee	0	2	Alyssa Jerome	0	1
Maya Dodson	3	5	Alanna Smith	0	1
Lexie Hull	2	2	Anna Wilson	0	1
20-PLUS POINTS GAMES	2018-19	CAREER	<b>STANFORD SUPERLATIVES</b>		
Alanna Smith	3	12	Points .....	33, A. Smith at Hawaii	
Kiana Williams	1	4	Field Goals Made .....	12, A. Smith at Hawaii	
DiJonai Carrington	0	2	Field Goal Att. ....	18, A. Smith vs. American	
Nadia Fingall	1	1	3-Point FG Made .....	5, A. Smith vs. Baylor	
Anna Wilson	0	1		5, K. Williams vs. FGCU	
				5, A. Smith vs. San Francisco	
				5, Lexie Hull vs. Idaho	
			3-Point FG Att.....	10, K. Williams vs. Baylor	
				10, Lexie Hull vs. Idaho	
			Free Throws Made .....	12, D. Carrington vs. FGCU	
			Free Throw Att. ....	15, D. Carrington vs. FGCU	
			Rebounds.....	11, Lexie Hull vs. UC Davis	
			Assists .....	9, K. Williams vs. Idaho	
			Steals .....	7, Lacie Hull vs. American	
			Blocked Shots.....	4, M. Dodson vs. San Francisco	
				4, A. Smith vs. San Francisco	
DOUBLE-FIGURE REBOUNDS	2018-19	CAREER			
Alanna Smith	0	12			
DiJonai Carrington	0	2			
Lexie Hull	1	1			
Marta Sniezek	0	1			
DOUBLE-FIGURE ASSISTS	2018-19	CAREER			
Marta Sniezek	0	2			
LED TEAM IN SCORING (+TIES)	2018-19	CAREER			
Alanna Smith	5	25			
Kiana Williams	3	11			
DiJonai Carrington	0	5			
Shannon Coffee	0	2			
Nadia Fingall	1	1			
Alexa Romano	0	1			

**THE LAST TIME STANFORD****BEAT A NO. 1 TEAM:**

11/17/14 vs. No. 1 Connecticut (88-86 [OT])

**BEAT A TOP 25 TEAM:**

12/15/18 vs. No. 3 Baylor (68-63)

**BEAT A TOP 5 TEAM:**

12/15/18 vs. No. 3 Baylor (68-63)

**BEAT A TOP 25 TEAM ON THE ROAD:**

2/4/18 at No. 6 Oregon (78-65)

**SCORED 100+ POINTS:**

11/11/18 vs. Idaho (115)

**ALLOWED 100+ POINTS:**

12/27/00 at Oklahoma (102)

**SCORED FEWER THAN 50 POINTS:**

3/5/17 vs. Oregon State (48)

**ALLOWED FEWER THAN 50 POINTS:**

11/24/18 vs. American (49)

**SCORED FEWER THAN 40 POINTS:**

1/24/16 at UCLA (36)

**ALLOWED FEWER THAN 40 POINTS:**

12/16/17 vs. UNLV (33)

**SHOT 60+ PERCENT:**

11/25/16 vs. Wichita State (.623)

**OPPONENT SHOT 59+ PERCENT:**

12/16/10 at DePaul (.596)

**SHOT LESS THAN 30 PERCENT:**

12/3/17 at Baylor (.294)

**OPPONENT SHOT LESS THAN 30 PERCENT:**

11/7/18 vs. UC Davis (.226)

**FIVE CARDINAL IN DOUBLE-FIGURES:**

11/11/18 vs. Idaho

(A. Smith 19, K. Williams 19, Lexie Hull 17,  
N. Fingall 16, M. Dodson 10, A. Wilson 10)**TWO PLAYERS WITH 20+ POINTS:**

3/17/18 vs. Gonzaga

(K. Williams 21, A. Smith 20)

**THREE PLAYERS WITH 20+ POINTS:**

1/23/15 at UCLA,

(B. Roberson 21, B. Samuelson 21, A. Orrange 20)

**PLAYER SCORED 40+ POINTS:**

12/20/11, Nnemkadi Ogumike vs. Tennessee (42)

**PLAYER SCORED 30+ POINTS:**

11/25/18, Alanna Smith at Hawaii (30)

**PLAYER MADE 10+ FIELD GOALS:**

11/25/18, Alanna Smith at Hawaii (12)

**PLAYER MADE 5+ 3-POINTERS:**

12/15/18, Alanna Smith vs. Baylor (5)

**PLAYER MADE 10+ FREE THROWS:**

11/23/18, DiJonai Carrington vs. FGCU (12)

**PLAYER HAD 10+ ASSISTS:**

11/11/16, Marta Sniezek vs. Cal Poly (10)

**PLAYER HAD 15+ REBOUNDS:**

1/12/18, Kaylee Johnson vs. Washington State (15)

**PLAYER HAD 5+ BLOCKED SHOTS:**

2/17/18, Kaylee Johnson at California (6)

**PLAYER HAD 5+ STEALS:**

11/24/18, Lacie Hull vs. American (7)

**PLAYER HAD A DOUBLE-DOUBLE:**

11/7/18, Lexie Hull vs. UC Davis (11 pts, 11 reb)

**TWO PLAYERS HAD A DOUBLE-DOUBLE:**

3/31/17, Erica McCall (14 pts, 14 reb)

and Alanna Smith (14 pts, 12 reb) vs. South Carolina

**PLAYER HAD A TRIPLE-DOUBLE:**

3/18/02, N. Powell vs. Tulane (16 pts, 10 reb, 10 ast)

**STANFORD HIGHS/LOWS**

Most Points .....	115 vs. Idaho (11/11/18)
Fewest Points .....	68 vs. Baylor (12/15/18)
Most 1st Quarter Points.....	28 vs. Idaho (11/11/18)
Fewest 1st Quarter Points.....	15 at Hawaii (11/25/18)
Most 2nd Quarter Points .....	28 vs. Idaho (11/11/18)
Fewest 2nd Quarter Points .....	13 vs. American (11/24/18)
Most 3rd Quarter Points .....	40 vs. Idaho (11/11/18)
Fewest 3rd Quarter Points .....	9 at Gonzaga (12/2/18)
Most 4th Quarter Points .....	32 at Gonzaga (12/2/18)
Fewest 4th Quarter Points .....	10 vs. Baylor (12/15/18)
Best FG Pct.....	56.6% (30-of-53) at Hawaii (11/25/18)
Worst FG Pct.....	38.3% (23-of-60) vs. Baylor (12/15/18)
Most 3-Pt. FGs Made.....	16 vs. Idaho (11/11/18)
Fewest 3-Pt. FGs Made .....	6 vs. UC Davis (11/7/18)
Most 3-Pt. FGs Attempted .....	41 vs. Idaho (11/11/18)
Fewest 3-Pt. FGs Attempted.....	21 at Hawaii (11/25/18)
Best 3-Pt. FG Pct. (min. five attempts).....	50.0% (11-of-22) vs. FGCU (11/23/18)
Worst 3-Pt. FG Pct.....	25.0% (6-of-24) vs. UC Davis (11/7/18)
Most Free Throws Made .....	17 vs. FGCU (11/23/18)
Fewest Free Throws Made.....	9, three times [last vs. Baylor (12/15/18)]
Most Free Throws Attempted.....	26 vs. FGCU (11/23/18)
Fewest Free Throws Attempted .....	13 vs. Idaho (11/11/18)
Best Free Throw Pct. (min. five attempts) .....	76.5% (13-of-17) at Hawaii (11/25/18)
Worst Free Throw Pct. ....	42.9% (9-of-21) vs. Baylor (12/15/18)
Most Rebounds.....	50 vs. UC Davis (11/7/18)
Fewest Rebounds .....	24 at Gonzaga (12/2/18)
Best Rebound Margin.....	+29 vs. Idaho (11/11/18)
Worst Rebound Margin.....	-14 at Gonzaga (12/2/18)
Most Assists .....	26 vs. Idaho (11/11/18)
Fewest Assists.....	10 vs. UC Davis (11/7/18)
Most Turnovers.....	21 vs. UC Davis (11/7/18)
Fewest Turnovers .....	9 vs. San Francisco (11/15/18)
Best Turnover Margin.....	+8 at Gonzaga (12/2/18)
Worst Turnover Margin.....	-4 vs. FGCU (11/23/18)
Most Blocked Shots .....	11 vs. San Francisco (11/15/18)
Fewest Blocked Shots .....	1 vs. FGCU (11/23/18)
Most Steals.....	13 at Hawaii (11/25/18)
Fewest Steals .....	4 vs. San Francisco (11/15/18)

**OPPONENT HIGHS/LOWS**

Most Points .....	79 by Gonzaga (12/2/18)
Fewest Points .....	43 by UC Davis (11/7/18)
Most 1st Quarter Points.....	22 by Gonzaga (12/2/18)
Fewest 1st Quarter Points.....	8 by Hawaii (11/25/18)
Most 2nd Quarter Points .....	22 by FGCU (11/23/18)
Fewest 2nd Quarter Points .....	10 vs. UC Davis (11/7/18)
Most 3rd Quarter Points .....	24 by Hawaii (11/25/18)
Fewest 3rd Quarter Points .....	10 vs. UC Davis (11/7/18)
Most 4th Quarter Points .....	21, two times [last by Baylor (12/15/18)]
Fewest 4th Quarter Points .....	9 vs. UC Davis (11/7/18)
Best FG Pct.....	54.2% (26-of-48) by Gonzaga (12/2/18)
Worst FG Pct.....	22.6% (14-of-62) by UC Davis (11/7/18)
Most 3-Pt. FGs Made.....	15 by Idaho (11/11/18)
Fewest 3-Pt. FGs Made .....	3, two times [last by Baylor (12/15/18)]
Most 3-Pt. FGs Attempted .....	38 by FGCU (11/23/18)
Fewest 3-Pt. FGs Attempted.....	7 by Baylor (12/15/18)
Most FTs Made .....	19 by Gonzaga (12/2/18)
Fewest FTs Made .....	2 by Hawaii (11/25/18)
Most FTs Attempted.....	23 by San Francisco (11/15/18)
Fewest FTs Attempted .....	2 by Hawaii (11/25/18)
Most Rebounds .....	43 by Baylor (12/15/18)
Fewest Rebounds .....	20, two times [last by FGCU (11/23/18)]
Most Assists .....	17 by Hawaii (11/25/18)
Fewest Assists.....	6 by UC Davis (11/7/18)
Most Turnovers.....	23 by Gonzaga (12/2/18)
Fewest Turnovers .....	12 by FGCU (11/23/18)
Best Turnover Margin.....	+4 by FGCU (11/23/18)
Worst Turnover Margin.....	-8 by Gonzaga (12/2/18)
Most Blocked Shots.....	6 by Baylor (12/15/18)
Fewest Blocked Shots .....	0, two times [last by FGCU (11/23/18)]
Most Steals.....	13 by UC Davis (11/7/18)
Fewest Steals .....	3 by American (11/24/18)

## STANFORD RECORDS

## CAREER SCORING

No.	Player	PTS
1.	Chiney Ogwumike (2011-14)	2,737
2.	Candice Wiggins (2005-08)	2,629
3.	Nnemkadi Ogwumike (2009-12)	2,491
4.	Kate Starbird (1994-97)	2,215
5.	Jayne Appel (2007-10)	2,125
6.	Val Whiting (1990-93)	2,077
7.	Nicole Powell (2001-04)	2,062
8.	Jeanne Ruark Hoff (1979-83)	2,038
9.	Kayla Pedersen (2008-11)	1,941
10.	Trisha Stevens (1988-91)	1,649
11.	Jennifer Azzi (1987-90)	1,634
12.	Katy Steding (1987-90)	1,586
13.	Olympia Scott (1995-98)	1,524
14.	Brooke Smith (2005-07)	1,520
15.	Anita Kaplan (1992-95)	1,509
16.	Lindsey Yamasaki (1999-2002)	1,497
17.	Jeanette Pohlen (2008-11)	1,453
18.	Virginia Sourlis (1983-86)	1,449
19.	Sonja Henning (1988-91)	1,445
20.	Amber Orrange (2012-15)	1,426
21.	Louise Smith (1979-82)	1,414
22.	Christy Hedgpeth (1991-94)	1,387
23.	Erica McCall (2014-17)	1,376
24.	Kelley Suminski (2002-05)	1,364
25.	Meg Metzger (1980-83)	1,360
26.	Rachel Hemmer (1992-95)	1,289
27.	Vanessa Nygaard (1994-98)	1,279
28.	Julie Zeilstra (1989-91)	1,259
29.	Brittany McPhee (2015-18)	1,250
	Lili Thompson (2014-16)	1,250
31.	Maggie Nelson (1975-78)	1,180
32.	Karlie Samuelson (2014-17)	1,164
33.	<b>ALANNA SMITH (2016-19)</b>	<b>1,152</b>
34.	Kami Anderson (1985-88)	1,141
35.	Jill Yanke (1986-89)	1,134
36.	Jillian Harmon (2006-09)	1,096
37.	Joslyn Tinkle (2010-13)	1,091
38.	Molly Goodenbour (1990-93)	1,040
39.	Angie Paccione (1979-83)	1,013
40.	Bethany Donaphin (1999-02)	1,010

## CAREER BLOCKS

No.	Player	BLKS
1.	Jayne Appel (2007-10)	273
2.	Chiney Ogwumike (2011-14)	202
3.	Val Whiting (1990-93)	201
4.	Erica McCall (2014-17)	200
5.	Kaylee Johnson (2015-18)	166
6.	Kristen Newlin (2004-07)	163
7.	<b>ALANNA SMITH (2016-19)</b>	<b>160</b>
8.	Joslyn Tinkle (2010-13)	150
9.	Bethany Donaphin (1999-2002)	136
	Cori Enghusen (1999-2002)	136

## CAREER ASSISTS

No.	Player	ASTS
1.	Sonja Henning (1988-91)	757
2.	Jennifer Azzi (1987-90)	751
3.	Milena Flores (1997-2000)	644
4.	Jamila Wideman (1994-97)	585
5.	Nicole Powell (2001-04)	577
6.	Jeanette Pohlen (2008-11)	560
7.	Amber Orrange (2012-15)	552
8.	Virginia Sourlis (1983-86)	483
9.	Molly Goodenbour (1990-93)	441
10.	Kate Starbird (1994-97)	437
11.	Candice Wiggins (2005-08)	436
	<b>MARTA SNIEZEK (2016-19)</b>	<b>428</b>

## SINGLE-GAME STEALS

No.	Player	STLS
1.	Katy Steding at Northwestern (12/3/88)	10
2.	Milena Flores vs. Saint Mary's (12/27/99)	9
3.	Jennifer Azzi vs. North Carolina State (12/19/87)	8
4.	<b>LACIE HULL VS. AMERICAN (11/24/18)</b>	<b>7</b>
	Candice Wiggins vs. Old Dominion (11/24/07)	7
	Brooke Smith at Washington State (1/13/07)	7
	Jamila Wideman at Colorado (12/28/96)	7
	Katy Steding at UCLA (1/7/89)	7
	Jennifer Azzi at Fresno State (12/1/87)	7

## TEAM SINGLE-GAME SCORING

No.	Opponent	PTS
1.	vs. Cal State Fullerton (12/10/94)	122
	vs. Long Beach State (12/8/93)	122
3.	vs. Wisconsin (11/25/88)	119
4.	vs. Arizona (2/23/91)	116
5.	<b>VS. IDAHO (11/11/18)</b>	<b>115</b>
6.	vs. Arkansas (3/24/90)	114
7.	vs. Arizona State (1/13/94)	113
	vs. California (2/1/91)	113
	at Arizona (2/24/90)	113
	vs. Ohio (11/25/89)	113

## TEAM SINGLE-GAME FIELD GOALS

No.	Opponent	FGM
1.	vs. Cal State Fullerton (12/10/94)	51
2.	at Arizona (2/24/90)	47
3.	vs. Long Beach State (12/8/93)	46
4.	<b>VS. IDAHO (11/11/18)</b>	<b>45</b>
	vs. California (2/18/94)	45
	vs. Arkansas (3/24/90)	45
	vs. California (3/2/90)	45
	vs. Oregon (2/25/89)	45
9.	vs. Arizona (3/11/11)	44
	vs. Providence (12/28/94)	44
	vs. Illinois State (3/18/89)	44
	vs. Wisconsin (11/25/88)	44

## TEAM SINGLE-GAME 3-POINTERS

No.	Opponent	3FGM
1.	<b>VS. IDAHO (11/11/18)</b>	<b>16</b>
	at UCLA (2/24/02)	16
	at Washington (2/24/01)	16
4.	<b>VS. SAN FRANCISCO (11/15/18)</b>	<b>15</b>
	at San Francisco (11/29/17)	15
	vs. Missouri State (11/27/15)	15
	at Arizona (1/17/14)	15
	vs. UCLA (1/20/05)	15
	vs. Washington State (1/31/04)	15
	vs. Arizona (1/10/04)	15

**2018-19 Results**

<b>RECORD:</b>	<b>OVERALL</b>	<b>HOME</b>	<b>AWAY</b>	<b>NEUTRAL</b>
ALL GAMES	7-1	4-0	1-1	2-0
CONFERENCE	0-0	0-0	0-0	0-0
NON-CONFERENCE	7-1	4-0	1-1	2-0

<b>DATE</b>	<b>TIME</b>	<b>OPPONENT</b>		<b>SCORE</b>	<b>ATTEND</b>	<b>HIGH POINTS</b>	<b>HIGH REBOUNDS</b>
11/7/18	7:00 p.m.	UC DAVIS	W	71-43	2471	(16) Smith, Alanna	(11) Hull, Lexie
11/11/18	2:00 p.m.	IDAHO	W	115-71	2582	(19) Williams, Kiana (19) Smith, Alanna	(9) Smith, Alanna
11/15/18	7:00 p.m.	SAN FRANCISCO	W	96-62	2077	(21) Williams, Kiana	(7) Smith, Alanna
11/23/18	4:30 p.m.	# vs. FGCU	W	88-65	1346	(24) Fingall, Nadia	(9) Carrington, DiJonai
11/24/18	12:00 p.m.	# vs. American	W	71-49	1268	(25) Smith, Alanna	(8) Smith, Alanna
11/25/18	2:30 p.m.	# at Hawaii	W	81-59	1383	(30) Smith, Alanna	(6) Fingall, Nadia
12/2/18	2:00 p.m.	at Gonzaga		73-79 L	6,000	(18) Williams, Kiana	(7) Smith, Alanna
12/15/18	12:00 p.m.	BAYLOR	W	68-63	3,440	(21) Smith, Alanna	(8) Smith, Alanna

\* = Pac-12

# = Rainbow Wahine Showdown; Honolulu, Hawaii

<b>ATTENDANCE</b>	<b>GAMES</b>	<b>TOTALS</b>	<b>AVG/GAME</b>
HOME	4	10570	2642
AWAY	2	7383	3692
NEUTRAL	2	2614	1307
TOTAL	8	20567	2571



**2018-19 Game-by-Game Comparison**

	Date	Score	W/L	---TOTAL---		--3-PTRS--		FT-FTA		Pct		----REBOUNDS----				PF	A	TO	Blk	Stl	Pts	Avg
				FG-FGA	Pct	3FG-FGA	Pct		Pct	Off	Def	Tot	Avg									
UC Davis	11/7	71-43	W	14-62	.226	8-31	.258	7-13	.538	6	19	25	25.0	17	6	18	3	13	43	43.0		
<b>Stanford</b>				<b>26-61</b>	<b>.426</b>	<b>6-24</b>	<b>.250</b>	<b>13-18</b>	<b>.722</b>	<b>12</b>	<b>38</b>	<b>50</b>	<b>50.0</b>	<b>18</b>	<b>10</b>	<b>21</b>	<b>6</b>	<b>12</b>	<b>71</b>	<b>71.0</b>		
Idaho	11/11	115-71	W	25-59	.424	15-24	.625	6-13	.462	2	18	20	22.5	20	14	16	2	4	71	57.0		
<b>Stanford</b>				<b>45-84</b>	<b>.536</b>	<b>16-41</b>	<b>.390</b>	<b>9-13</b>	<b>.692</b>	<b>20</b>	<b>29</b>	<b>49</b>	<b>49.5</b>	<b>19</b>	<b>26</b>	<b>10</b>	<b>7</b>	<b>8</b>	<b>115</b>	<b>93.0</b>		
San Francisco	11/15	96-62	W	20-60	.333	5-16	.313	17-23	.739	13	26	39	28.0	18	8	14	0	4	62	58.7		
<b>Stanford</b>				<b>36-70</b>	<b>.514</b>	<b>15-32</b>	<b>.469</b>	<b>9-15</b>	<b>.600</b>	<b>9</b>	<b>25</b>	<b>34</b>	<b>44.3</b>	<b>19</b>	<b>24</b>	<b>9</b>	<b>11</b>	<b>4</b>	<b>96</b>	<b>94.0</b>		
FGCU	11/23	88-65	W	23-63	.365	10-38	.263	9-11	.818	3	17	20	26.0	19	9	12	0	8	65	60.2		
<b>Stanford</b>				<b>30-58</b>	<b>.517</b>	<b>11-22</b>	<b>.500</b>	<b>17-26</b>	<b>.654</b>	<b>12</b>	<b>35</b>	<b>47</b>	<b>45.0</b>	<b>14</b>	<b>22</b>	<b>16</b>	<b>1</b>	<b>7</b>	<b>88</b>	<b>92.5</b>		
American	11/24	71-49	W	17-46	.370	3-12	.250	12-15	.800	4	21	25	25.8	19	10	16	1	3	49	58.0		
<b>Stanford</b>				<b>26-62</b>	<b>.419</b>	<b>7-22</b>	<b>.318</b>	<b>12-17</b>	<b>.706</b>	<b>15</b>	<b>25</b>	<b>40</b>	<b>44.0</b>	<b>16</b>	<b>18</b>	<b>12</b>	<b>2</b>	<b>12</b>	<b>71</b>	<b>88.2</b>		
Hawaii	11/25	81-59	W	22-54	.407	13-22	.591	2-2	1.000	6	16	22	25.2	19	17	19	1	6	59	58.2		
<b>Stanford</b>				<b>30-53</b>	<b>.566</b>	<b>8-21</b>	<b>.381</b>	<b>13-17</b>	<b>.765</b>	<b>8</b>	<b>24</b>	<b>32</b>	<b>42.0</b>	<b>11</b>	<b>18</b>	<b>13</b>	<b>5</b>	<b>13</b>	<b>81</b>	<b>87.0</b>		
Gonzaga	12/2	73-79	L	26-48	.542	8-13	.615	19-22	.864	10	28	38	27.0	16	14	23	3	9	79	61.1		
<b>Stanford</b>				<b>25-57</b>	<b>.439</b>	<b>9-22</b>	<b>.409</b>	<b>14-24</b>	<b>.583</b>	<b>9</b>	<b>15</b>	<b>24</b>	<b>39.4</b>	<b>18</b>	<b>14</b>	<b>15</b>	<b>6</b>	<b>12</b>	<b>73</b>	<b>85.0</b>		
Baylor	12/15	68-63	W	22-63	.349	3-7	.429	16-20	.800	12	31	43	29.0	18	13	15	6	4	63	61.4		
<b>Stanford</b>				<b>23-60</b>	<b>.383</b>	<b>13-30</b>	<b>.433</b>	<b>9-21</b>	<b>.429</b>	<b>7</b>	<b>23</b>	<b>30</b>	<b>38.2</b>	<b>19</b>	<b>13</b>	<b>10</b>	<b>5</b>	<b>7</b>	<b>68</b>	<b>82.9</b>		

**2018-19 Stanford Women's Basketball**  
**Stanford Combined Team Statistics (as of Dec 15, 2018)**  
**All games**

<b>RECORD:</b>	<b>OVERALL</b>	<b>HOME</b>	<b>AWAY</b>	<b>NEUTRAL</b>
ALL GAMES	7-1	4-0	1-1	2-0
CONFERENCE	0-0	0-0	0-0	0-0
NON-CONFERENCE	7-1	4-0	1-1	2-0

#	Player	gp-gs	min	avg	Total		3-Point		F-Throw		Rebounds				pf	dq	a	to	blk	stl	pts	avg
					fg-fga	fg%	3fg-fga	3fg%	ft-fta	ft%	off	def	tot	avg								
11	Smith, Alanna	8-8	186	23.3	52-90	.578	21-42	.500	23-35	.657	12	39	51	6.4	21	1	20	23	13	11	148	18.5
23	Williams, Kiana	8-8	255	31.9	45-95	.474	23-53	.434	7-10	.700	0	16	16	2.0	8	0	35	20	0	7	120	15.0
12	Hull, Lexie	3-3	77	25.7	12-27	.444	6-15	.400	2-2	1.000	9	12	21	7.0	8	0	3	4	3	8	32	10.7
21	Carrington, DiJonai	8-8	169	21.1	26-58	.448	6-18	.333	21-33	.636	8	32	40	5.0	13	0	17	11	1	12	79	9.9
04	Fingall, Nadia	8-8	169	21.1	30-57	.526	5-15	.333	8-15	.533	20	20	40	5.0	18	0	16	11	4	5	73	9.1
15	Dodson, Maya	8-0	165	20.6	28-49	.571	0-0	.000	8-19	.421	16	15	31	3.9	16	0	12	6	14	4	64	8.0
10	Jerome, Alyssa	8-0	108	13.5	9-26	.346	3-8	.375	11-15	.733	7	23	30	3.8	11	0	4	5	3	1	32	4.0
24	Hull, Lacie	8-2	184	23.0	10-31	.323	7-18	.389	4-4	1.000	6	13	19	2.4	14	0	15	7	3	18	31	3.9
03	Wilson, Anna	7-3	77	11.0	7-23	.304	4-18	.222	5-6	.833	3	12	15	2.1	11	0	7	3	0	7	23	3.3
54	Brown, Jenna	8-0	86	10.8	7-19	.368	1-7	.143	4-9	.444	0	12	12	1.5	5	0	10	5	0	0	19	2.4
02	Coffee, Shannon	8-0	51	6.4	6-12	.500	4-7	.571	0-0	.000	1	6	7	0.9	3	0	3	2	1	0	16	2.0
20	Moschkau, Estella	6-0	25	4.2	4-4	1.000	3-3	1.000	0-0	.000	1	0	1	0.2	1	0	2	5	0	2	11	1.8
14	Brewer, Mikaela	4-0	12	3.0	2-4	.500	0-2	.000	2-2	1.000	0	1	1	0.3	1	0	0	1	1	0	6	1.5
22	Romano, Alexa	8-0	36	4.5	3-10	.300	2-8	.250	1-1	1.000	0	2	2	0.3	4	0	1	1	0	0	9	1.1
Team											9	11	20					2				
Total.....		8	1600		241-505	.477	85-214	.397	96-151	.636	92	214	306	38.2	134	1	145	106	43	75	663	82.9
Opponents.....		8	1600		169-455	.371	65-163	.399	88-119	.739	56	176	232	29.0	146	-	91	133	16	51	491	61.4

TEAM STATISTICS	STAN	OPP	Date	Opponent	Score	Att.
SCORING	663	491	11/7/18	UC DAVIS	w 71-43	2471
Points per game	82.9	61.4	11/11/18	IDAHO	w 115-71	2582
Scoring margin	+21.5	-	11/15/18	SAN FRANCISCO	w 96-62	2077
FIELD GOALS-ATT	241-505	169-455	# 11/23/18	vs FGCU	w 88-65	1346
Field goal pct	.477	.371	# 11/24/18	vs American	w 71-49	1268
3 POINT FG-ATT	85-214	65-163	# 11/25/18	at Hawaii	w 81-59	1383
3-point FG pct	.397	.399	12/2/18	at Gonzaga	L 73-79	6000
3-pt FG made per game	10.6	8.1	12/15/18	BAYLOR	w 68-63	3440
FREE THROWS-ATT	96-151	88-119				
Free throw pct	.636	.739		* = Pac-12		
F-Throws made per game	12.0	11.0		# = Rainbow Wahine Showdown; Honolulu, O'ahu		
REBOUNDS	306	232				
Rebounds per game	38.2	29.0				
Rebounding margin	+9.3	-				
ASSISTS	145	91				
Assists per game	18.1	11.4				
TURNOVERS	106	133				
Turnovers per game	13.3	16.6				
Turnover margin	+3.4	-				
Assist/turnover ratio	1.4	0.7				
STEALS	75	51				
Steals per game	9.4	6.4				
BLOCKS	43	16				
Blocks per game	5.4	2.0				
ATTENDANCE	10570	9997				
Home games-Avg/Game	4-2642	2-3692				
Neutral site-Avg/Game	-	2-1307				

Score by Periods	1st	2nd	3rd	4th	Totals
Stanford	153	163	178	169	663
Opponents	110	124	139	118	491

**POINTS-REBOUNDS-ASSISTS**

OPPONENT	#2 SC	#3 AW	#4 NF	#10 AJ	#11 AS	#12 LH	#13 MS	#14 MB	#15 MD	#20 EM	#21 DC	#22 AR	#23 KW	#24 LH	#54 JB
UC Davis	0-1-1	0-5-1	2-4-0	6-8-0	16-2-1	11-11-0	DNP	0-0-0	10-6-1	0-0-0	0-2-1	6-2-0	14-1-3	2-3-0	4-3-2
Idaho	2-1-0	10-1-1	16-8-2	4-6-2	19-9-4	17-5-0	DNP	2-0-0	10-5-0	3-0-1	6-4-1	0-0-1	19-3-9	0-2-2	7-3-3
San Francisco	0-0-2	2-0-0	7-3-2	7-2-0	18-7-3	4-5-3	DNP	4-1-0	10-3-6	5-1-1	9-5-4	0-0-0	21-0-3	6-1-0	3-2-0
FGCU	0-1-0	8-4-3	24-8-5	2-3-1	6-6-2	DNP	DNP	DNP	6-4-1	3-0-0	16-9-3	3-0-0	17-6-2	3-4-4	0-0-1
American	3-1-0	0-1-2	10-5-2	3-3-0	25-8-4	DNP	DNP	DNP	4-3-1	0-0-0	13-7-1	0-0-0	9-0-7	0-3-0	4-3-1
Hawaii	2-1-0	2-4-0	7-6-1	4-2-1	30-4-3	DNP	DNP	0-0-0	7-1-0	0-0-0	12-4-4	0-0-0	9-4-3	8-3-6	0-0-0
Gonzaga	0-0-0	DNP	5-3-3	6-4-0	13-7-1	DNP	DNP	DNP	8-4-2	DNP	13-3-1	0-0-0	18-1-3	9-1-3	1-0-1
Baylor	9-2-0	1-0-0	2-3-1	0-2-0	21-8-2	DNP	DNP	DNP	9-5-1	DNP	10-6-2	0-0-0	13-1-5	3-2-0	0-1-2

**GAME-BY-GAME STARTERS**

OPPONENT	DATE	SCORE	W/L	1	2	3	4	5
UC Davis	11/7	71-43	W	Williams	Lexie Hull	Carrington	Smith	Fingall
Idaho	11/11	115-71	W	Williams	Lexie Hull	Carrington	Smith	Fingall
San Francisco	11/15	96-62	W	Williams	Lexie Hull	Carrington	Smith	Fingall
FGCU	11/23	88-65	W	Williams	Wilson	Carrington	Smith	Fingall
American	11/24	71-49	W	Williams	Wilson	Carrington	Smith	Fingall
Hawaii	11/25	81-59	W	Williams	Wilson	Carrington	Smith	Fingall
Gonzaga	12/2	73-79	L	Williams	Lacie Hull	Carrington	Smith	Fingall
Baylor	12/15	68-63	W	Williams	Lacie Hull	Carrington	Smith	Fingall

**2018-19 Stanford Women's Basketball  
Stanford Season/Career Statistics (as of Dec 15, 2018)  
All games**

## SEASON STATISTICS

## CAREER STATISTICS

SUMMARY	gp-gs	min/g	fg%	3fg%	ft%	r/g	a/g	stl	blk	pts/g	gp-gs	min/g	fg%	3fg%	ft%	r/g	a/g	stl	blk	pts/g
Smith, Alanna	8-8	23.3	.578	.500	.657	6.4	2.5	11	13	18.5	115-46	20.1	.474	.342	.628	5.1	0.9	86	160	10.0
Williams, Kiana	8-8	31.9	.474	.434	.700	2.0	4.4	7	0	15.0	43-34	26.8	.428	.395	.796	1.7	2.4	37	5	11.2
Hull, Lexie	3-3	25.7	.444	.400	1.000	7.0	1.0	8	3	10.7	3-3	25.7	.444	.400	1.000	7.0	1.0	8	3	10.7
Carrington, DiJonai	8-8	21.1	.448	.333	.636	5.0	2.1	12	1	9.9	75-15	15.5	.416	.281	.651	4.0	1.2	77	11	6.0
Fingall, Nadia	8-8	21.1	.526	.333	.533	5.0	2.0	5	4	9.1	78-16	12.6	.491	.339	.577	3.1	0.7	34	30	4.4
Dodson, Maya	8-0	20.6	.571	.000	.421	3.9	1.5	4	14	8.0	41-4	13.1	.520	.000	.404	2.4	0.4	6	41	4.4
Jerome, Alyssa	8-0	13.5	.346	.375	.733	3.8	0.5	1	3	4.0	42-1	10.6	.385	.308	.714	1.6	0.4	2	6	2.4
Hull, Lacie	8-2	23.0	.323	.389	1.000	2.4	1.9	18	3	3.9	8-2	23.0	.323	.389	1.000	2.4	1.9	18	3	3.9
Wilson, Anna	7-3	11.0	.304	.222	.833	2.1	1.0	7	0	3.3	34-5	10.3	.316	.295	.615	1.3	0.6	20	1	3.2
Brown, Jenna	8-0	10.8	.368	.143	.444	1.5	1.3	0	0	2.4	8-0	10.8	.368	.143	.444	1.5	1.3	0	0	2.4
Coffee, Shannon	8-0	6.4	.500	.571	.000	0.9	0.4	0	1	2.0	67-2	4.4	.449	.364	.406	1.0	0.2	5	9	1.7
Moschkau, Estella	6-0	4.2	1.000	1.000	.000	0.2	0.3	2	0	1.8	29-0	2.6	.615	.600	.500	0.2	0.1	2	0	0.8
Brewer, Mikaela	4-0	3.0	.500	.000	1.000	0.3	0.0	0	1	1.5	31-0	3.3	.268	.222	1.000	0.3	0.2	1	1	1.0
Romano, Alexa	8-0	4.5	.300	.250	1.000	0.3	0.1	0	0	1.1	76-8	6.6	.350	.309	.700	0.7	0.4	20	4	1.6

SCORING	fg-fga	fg%	3fg-fga	3fg%	ft-fa	ft%	pts	pts/g	fg-fga	fg%	3fg-fga	3fg%	ft-fa	ft%	pts	pts/g
Smith, Alanna	52-90	.578	21-42	.500	23-35	.657	148	18.5	450-949	.474	95-278	.342	157-250	.628	1152	10.0
Williams, Kiana	45-95	.474	23-53	.434	7-10	.700	120	15.0	173-404	.428	94-238	.395	43-54	.796	483	11.2
Hull, Lexie	12-27	.444	6-15	.400	2-2	1.000	32	10.7	12-27	.444	6-15	.400	2-2	1.000	32	10.7
Carrington, DiJonai	26-58	.448	6-18	.333	21-33	.636	79	9.9	168-404	.416	41-146	.281	71-109	.651	448	6.0
Fingall, Nadia	30-57	.526	5-15	.333	8-15	.533	73	9.1	138-281	.491	20-59	.339	45-78	.577	341	4.4
Dodson, Maya	28-49	.571	0-0	.000	8-19	.421	64	8.0	79-152	.520	0-0	.000	21-52	.404	179	4.4
Jerome, Alyssa	9-26	.346	3-8	.375	11-15	.733	32	4.0	37-96	.385	12-39	.308	15-21	.714	101	2.4
Hull, Lacie	10-31	.323	7-18	.389	4-4	1.000	31	3.9	10-31	.323	7-18	.389	4-4	1.000	31	3.9
Wilson, Anna	7-23	.304	4-18	.222	5-6	.833	23	3.3	37-117	.316	28-95	.295	8-13	.615	110	3.2
Brown, Jenna	7-19	.368	1-7	.143	4-9	.444	19	2.4	7-19	.368	1-7	.143	4-9	.444	19	2.4
Coffee, Shannon	6-12	.500	4-7	.571	0-0	.000	16	2.0	44-98	.449	12-33	.364	13-32	.406	113	1.7
Moschkau, Estella	4-4	1.000	3-3	1.000	0-0	.000	11	1.8	8-13	.615	6-10	.600	1-2	.500	23	0.8
Brewer, Mikaela	2-4	.500	0-2	.000	2-2	1.000	6	1.5	11-41	.268	6-27	.222	2-2	1.000	30	1.0
Romano, Alexa	3-10	.300	2-8	.250	1-1	1.000	9	1.1	43-123	.350	21-68	.309	14-20	.700	121	1.6

TOTALS	o-reb	d-reb	t-reb	pf	fo	ast	to	a/to	o-reb	d-reb	t-reb	pf	fo	ast	to	a/to
Smith, Alanna	12	39	51	21	1	20	23	0.9	198	386	584	268	8	108	196	0.6
Williams, Kiana	0	16	16	8	0	35	20	1.8	4	70	74	46	0	102	60	1.7
Hull, Lexie	9	12	21	8	0	3	4	0.8	9	12	21	8	0	3	4	0.8
Carrington, DiJonai	8	32	40	13	0	17	11	1.5	80	218	298	114	0	89	104	0.9
Fingall, Nadia	20	20	40	18	0	16	11	1.5	94	146	240	122	1	57	63	0.9
Dodson, Maya	16	15	31	16	0	12	6	2.0	48	50	98	54	1	17	32	0.5
Jerome, Alyssa	7	23	30	11	0	4	5	0.8	18	48	66	38	0	18	27	0.7
Hull, Lacie	6	13	19	14	0	15	7	2.1	6	13	19	14	0	15	7	2.1
Wilson, Anna	3	12	15	11	0	7	3	2.3	4	40	44	37	0	20	23	0.9
Brown, Jenna	0	12	12	5	0	10	5	2.0	0	12	12	5	0	10	5	2.0
Coffee, Shannon	1	6	7	3	0	3	2	1.5	13	52	65	27	0	13	33	0.4
Moschkau, Estella	1	0	1	1	0	2	5	0.4	3	2	5	5	0	4	5	0.8
Brewer, Mikaela	0	1	1	1	0	0	1	0.0	1	7	8	4	0	6	11	0.5
Romano, Alexa	0	2	2	4	0	1	1	1.0	9	44	53	22	0	31	30	1.0



## 2018-19 Individual Game-by-Game

## #02 Coffee, Shannon

Opponent	Date	gs	min	Total		3-Pointers		Free throws		Rebounds				pf	a	t/o	blk	stl	pts	avg
				fg-fga	pct	3fg-fga	pct	ft-fta	pct	off	def	tot	avg							
UC DAVIS	11/7/18		6	0-1	.000	0-0	.000	0-0	.000	1	0	1	1.0	1	1	1	0	0	0	0.0
IDAHO	11/11/18		6	1-1	1.000	0-0	.000	0-0	.000	0	1	1	1.0	1	0	0	0	0	2	1.0
SAN FRANCISCO	11/15/18		8	0-1	.000	0-1	.000	0-0	.000	0	0	0	0.7	0	2	0	1	0	0	0.7
vs FGCU	11/23/18		1	0-0	.000	0-0	.000	0-0	.000	0	1	1	0.8	0	0	0	0	0	0	0.5
vs American	11/24/18		4	1-3	.333	1-2	.500	0-0	.000	0	1	1	0.8	0	0	0	0	0	3	1.0
at Hawaii	11/25/18		5	1-2	.500	0-0	.000	0-0	.000	0	1	1	0.8	0	0	0	0	0	2	1.2
at Gonzaga	12/2/18		2	0-0	.000	0-0	.000	0-0	.000	0	0	0	0.7	0	0	0	0	0	0	1.0
BAYLOR	12/15/18		19	3-4	.750	3-4	.750	0-0	.000	0	2	2	0.9	1	0	1	0	0	9	2.0
Totals		0	51	6-12	.500	4-7	.571	0-0	.000	1	6	7	0.9	3	3	2	1	0	16	2.0

## #03 Wilson, Anna

Opponent	Date	gs	min	Total		3-Pointers		Free throws		Rebounds				pf	a	t/o	blk	stl	pts	avg
				fg-fga	pct	3fg-fga	pct	ft-fta	pct	off	def	tot	avg							
UC DAVIS	11/7/18		13	0-4	.000	0-4	.000	0-0	.000	0	5	5	5.0	1	1	1	0	1	0	0.0
IDAHO	11/11/18		11	3-8	.375	2-6	.333	2-2	1.000	1	0	1	3.0	2	1	0	0	2	10	5.0
SAN FRANCISCO	11/15/18		13	1-3	.333	0-1	.000	0-0	.000	0	0	0	2.0	2	0	0	0	1	2	4.0
vs FGCU	11/23/18	*	17	3-6	.500	2-5	.400	0-0	.000	1	3	4	2.5	2	3	1	0	1	8	5.0
vs American	11/24/18	*	5	0-0	.000	0-0	.000	0-0	.000	1	0	1	2.2	3	2	0	0	0	0	4.0
at Hawaii	11/25/18	*	15	0-2	.000	0-2	.000	2-2	1.000	0	4	4	2.5	1	0	0	0	1	2	3.7
at Gonzaga	12/2/18		dnp	-	-	-	-	-	-	-	-	-	-	-	-	-	-	-	-	-
BAYLOR	12/15/18		3	0-0	.000	0-0	.000	1-2	.500	0	0	0	2.1	0	0	1	0	1	1	3.3
Totals		3	77	7-23	.304	4-18	.222	5-6	.833	3	12	15	2.1	11	7	3	0	7	23	3.3

## #04 Fingall, Nadia

Opponent	Date	gs	min	Total		3-Pointers		Free throws		Rebounds				pf	a	t/o	blk	stl	pts	avg
				fg-fga	pct	3fg-fga	pct	ft-fta	pct	off	def	tot	avg							
UC DAVIS	11/7/18	*	16	0-1	.000	0-0	.000	2-2	1.000	1	3	4	4.0	3	0	3	0	0	2	2.0
IDAHO	11/11/18	*	20	7-9	.778	0-0	.000	2-5	.400	3	5	8	6.0	1	2	1	2	0	16	9.0
SAN FRANCISCO	11/15/18	*	13	3-6	.500	1-3	.333	0-0	.000	2	1	3	5.0	3	2	1	0	0	7	8.3
vs FGCU	11/23/18	*	30	11-14	.786	1-2	.500	1-4	.250	5	3	8	5.8	2	5	1	0	1	24	12.3
vs American	11/24/18	*	24	3-8	.375	1-4	.250	3-4	.750	4	1	5	5.6	3	2	1	0	1	10	11.8
at Hawaii	11/25/18	*	24	3-7	.429	1-1	1.000	0-0	.000	2	4	6	5.7	1	1	2	0	1	7	11.0
at Gonzaga	12/2/18	*	25	2-4	.500	1-2	.500	0-0	.000	1	2	3	5.3	2	3	1	1	2	5	10.1
BAYLOR	12/15/18	*	17	1-8	.125	0-3	.000	0-0	.000	2	1	3	5.0	3	1	1	1	0	2	9.1
Totals		8	169	30-57	.526	5-15	.333	8-15	.533	20	20	40	5.0	18	16	11	4	5	73	9.1

## #10 Jerome, Alyssa

Opponent	Date	gs	min	Total		3-Pointers		Free throws		Rebounds				pf	a	t/o	blk	stl	pts	avg
				fg-fga	pct	3fg-fga	pct	ft-fta	pct	off	def	tot	avg							
UC DAVIS	11/7/18		16	2-5	.400	0-1	.000	2-2	1.000	2	6	8	8.0	0	0	1	0	0	6	6.0
IDAHO	11/11/18		13	1-2	.500	0-1	.000	2-2	1.000	0	6	6	7.0	4	2	1	0	0	4	5.0
SAN FRANCISCO	11/15/18		16	3-4	.750	1-2	.500	0-1	.000	0	2	2	5.3	2	0	0	2	0	7	5.7
vs FGCU	11/23/18		14	1-4	.250	0-0	.000	0-0	.000	0	3	3	4.8	1	1	2	0	0	2	4.8
vs American	11/24/18		12	0-2	.000	0-1	.000	3-4	.750	2	1	3	4.4	2	0	1	0	0	3	4.4
at Hawaii	11/25/18		11	0-3	.000	0-1	.000	4-6	.667	2	0	2	4.0	1	1	0	0	1	4	4.3

## #11 Smith, Alanna

Opponent	Date	gs	min	Total		3-Pointers		Free throws		Rebounds				pf	a	t/o	blk	stl	pts	avg
				fg-fga	pct	3fg-fga	pct	ft-fta	pct	off	def	tot	avg							
UC DAVIS	11/7/18	*	15	4-7	.571	1-2	.500	7-7	1.000	1	1	2	2.0	4	1	4	1	1	16	16.0
IDAHO	11/11/18	*	24	8-12	.667	2-5	.400	1-1	1.000	4	5	9	5.5	0	4	3	1	2	19	17.5
SAN FRANCISCO	11/15/18	*	26	6-12	.500	5-8	.625	1-2	.500	0	7	7	6.0	1	3	1	4	1	18	17.7
vs FGCU	11/23/18	*	13	1-5	.200	0-1	.000	4-5	.800	2	4	6	6.0	4	2	3	1	1	6	14.8
vs American	11/24/18	*	31	10-18	.556	3-6	.500	2-3	.667	1	7	8	6.4	1	4	3	1	2	25	16.8
at Hawaii	11/25/18	*	25	12-15	.800	3-6	.500	3-3	1.000	2	2	4	6.0	2	3	3	1	0	30	19.0
at Gonzaga	12/2/18	*	24	4-9	.444	2-5	.400	3-6	.500	2	5	7	6.1	5	1	3	2	3	13	18.1
BAYLOR	12/15/18	*	28	7-12	.583	5-9	.556	2-8	.250	0	8	8	6.4	4	2	3	2	1	21	18.5
Totals		8	186	52-90	.578	21-42	.500	23-35	.657	12	39	51	6.4	21	20	23	13	11	148	18.5

## 2018-19 Individual Game-by-Game

## #12 Hull, Lexie

Opponent	Date	gs	min	Total		3-Pointers		Free throws		Rebounds				pf	a	t/o	blk	stl	pts	avg	
				fg-fga	pct	3fg-fga	pct	ft-fga	pct	off	def	tot	avg								
UC DAVIS	11/7/18	*	27	5-10	.500	1-4	.250	0-0	.000	3	8	11	11.0	3	0	2	1	4	11	11.0	
IDAHO	11/11/18	*	25	6-12	.500	5-10	.500	0-0	.000	2	3	5	8.0	3	0	0	2	2	17	14.0	
SAN FRANCISCO	11/15/18	*	25	1-5	.200	0-1	.000	2-2	1.000	4	1	5	7.0	2	3	2	0	2	4	10.7	
vs FGCU	11/23/18	dnp		-	-	-	-	-	-	-	-	-	-	-	-	-	-	-	-	-	
vs American	11/24/18	dnp		-	-	-	-	-	-	-	-	-	-	-	-	-	-	-	-	-	
at Hawaii	11/25/18	dnp		-	-	-	-	-	-	-	-	-	-	-	-	-	-	-	-	-	
at Gonzaga	12/2/18	dnp		-	-	-	-	-	-	-	-	-	-	-	-	-	-	-	-	-	
<b>Totals</b>			3	77	12-27	.444	6-15	.400	2-2	1.000	9	12	21	7.0	8	3	4	3	8	32	10.7

## #14 Brewer, Mikaela

Opponent	Date	gs	min	Total		3-Pointers		Free throws		Rebounds				pf	a	t/o	blk	stl	pts	avg	
				fg-fga	pct	3fg-fga	pct	ft-fga	pct	off	def	tot	avg								
UC DAVIS	11/7/18		2	0-1	.000	0-1	.000	0-0	.000	0	0	0	0.0	0	0	1	0	0	0	0.0	
IDAHO	11/11/18		5	1-2	.500	0-1	.000	0-0	.000	0	0	0	0.0	0	0	1	0	0	2	1.0	
SAN FRANCISCO	11/15/18		4	1-1	1.000	0-0	.000	2-2	1.000	0	1	1	0.3	1	0	0	0	0	4	2.0	
vs FGCU	11/23/18	dnp		-	-	-	-	-	-	-	-	-	-	-	-	-	-	-	-	-	
vs American	11/24/18	dnp		-	-	-	-	-	-	-	-	-	-	-	-	-	-	-	-	-	
at Hawaii	11/25/18		1	0-0	.000	0-0	.000	0-0	.000	0	0	0	0.3	0	0	0	0	0	0	1.5	
at Gonzaga	12/2/18	dnp		-	-	-	-	-	-	-	-	-	-	-	-	-	-	-	-	-	
<b>Totals</b>			0	12	2-4	.500	0-2	.000	2-2	1.000	0	1	1	0.3	1	0	1	1	0	6	1.5

## #15 Dodson, Maya

Opponent	Date	gs	min	Total		3-Pointers		Free throws		Rebounds				pf	a	t/o	blk	stl	pts	avg	
				fg-fga	pct	3fg-fga	pct	ft-fga	pct	off	def	tot	avg								
UC DAVIS	11/7/18		25	5-8	.625	0-0	.000	0-2	.000	4	2	6	6.0	3	1	1	3	2	10	10.0	
IDAHO	11/11/18		19	5-8	.625	0-0	.000	0-0	.000	3	2	5	5.5	2	0	0	1	1	10	10.0	
SAN FRANCISCO	11/15/18		19	4-7	.571	0-0	.000	2-5	.400	0	3	3	4.7	2	6	0	4	0	10	10.0	
vs FGCU	11/23/18		22	3-5	.600	0-0	.000	0-2	.000	2	2	4	4.5	1	1	1	0	0	6	9.0	
vs American	11/24/18		18	2-4	.500	0-0	.000	0-0	.000	1	2	3	4.2	1	1	1	1	0	4	8.0	
at Hawaii	11/25/18		15	3-4	.750	0-0	.000	1-1	1.000	0	1	1	3.7	2	0	1	2	0	7	7.8	
at Gonzaga	12/2/18		20	3-6	.500	0-0	.000	2-5	.400	4	0	4	3.7	2	2	2	2	0	8	7.9	
BAYLOR	12/15/18		27	3-7	.429	0-0	.000	3-4	.750	2	3	5	3.9	3	1	0	1	1	9	8.0	
<b>Totals</b>			0	165	28-49	.571	0-0	.000	8-19	.421	16	15	31	3.9	16	12	6	14	4	64	8.0

## #20 Moschkau, Estella

Opponent	Date	gs	min	Total		3-Pointers		Free throws		Rebounds				pf	a	t/o	blk	stl	pts	avg	
				fg-fga	pct	3fg-fga	pct	ft-fga	pct	off	def	tot	avg								
UC DAVIS	11/7/18		4	0-0	.000	0-0	.000	0-0	.000	0	0	0	0.0	0	0	0	0	0	0	0.0	
IDAHO	11/11/18		6	1-1	1.000	1-1	1.000	0-0	.000	0	0	0	0.0	0	1	1	0	0	3	1.5	
SAN FRANCISCO	11/15/18		5	2-2	1.000	1-1	1.000	0-0	.000	1	0	1	0.3	0	1	1	0	0	5	2.7	
vs FGCU	11/23/18		2	1-1	1.000	1-1	1.000	0-0	.000	0	0	0	0.3	0	0	1	0	0	3	2.8	
vs American	11/24/18		2	0-0	.000	0-0	.000	0-0	.000	0	0	0	0.2	0	0	0	0	0	0	2.2	
at Hawaii	11/25/18		6	0-0	.000	0-0	.000	0-0	.000	0	0	0	0.2	1	0	2	0	2	0	1.8	
at Gonzaga	12/2/18	dnp		-	-	-	-	-	-	-	-	-	-	-	-	-	-	-	-	-	
<b>Totals</b>			0	25	4-4	1.000	3-3	1.000	0-0	.000	1	0	1	0.2	1	2	5	0	2	11	1.8

## #21 Carrington, DiJonai

Opponent	Date	gs	min	Total		3-Pointers		Free throws		Rebounds				pf	a	t/o	blk	stl	pts	avg	
				fg-fga	pct	3fg-fga	pct	ft-fga	pct	off	def	tot	avg								
UC DAVIS	11/7/18	*	13	0-6	.000	0-2	.000	0-0	.000	0	2	2	2.0	2	1	1	0	2	0	0.0	
IDAHO	11/11/18	*	11	2-8	.250	1-4	.250	1-2	.500	3	1	4	3.0	0	1	0	0	0	6	3.0	
SAN FRANCISCO	11/15/18	*	18	4-7	.571	1-4	.250	0-0	.000	1	4	5	3.7	1	4	2	0	0	9	5.0	
vs FGCU	11/23/18	*	32	2-5	.400	0-0	.000	12-15	.800	0	9	9	5.0	1	3	2	0	1	16	7.8	
vs American	11/24/18	*	22	6-7	.857	0-0	.000	1-1	1.000	2	5	7	5.4	2	1	1	0	2	13	8.8	
at Hawaii	11/25/18	*	19	4-6	.667	2-2	1.000	2-3	.667	1	3	4	5.2	1	4	2	0	3	12	9.3	
at Gonzaga	12/2/18	*	27	5-13	.385	1-5	.200	2-5	.400	0	3	3	4.9	3	1	2	0	3	13	9.9	
BAYLOR	12/15/18	*	27	3-6	.500	1-1	1.000	3-7	.429	1	5	6	5.0	3	2	1	1	1	10	9.9	
<b>Totals</b>			8	169	26-58	.448	6-18	.333	21-33	.636	8	32	40	5.0	13	17	11	1	12	79	9.9

## 2018-19 Individual Game-by-Game

## #22 Romano, Alexa

Opponent	Date	gs	min	Total		3-Pointers		Free throws		Rebounds				pf	a	t/o	blk	stl	pts	avg
				fg-fga	pct	3fg-fga	pct	ft-fa	pct	off	def	tot	avg							
UC DAVIS	11/7/18		9	2-3	.667	1-2	.500	1-1	1.000	0	2	2	2.0	0	0	1	0	0	6	6.0
IDAHO	11/11/18		7	0-3	.000	0-2	.000	0-0	.000	0	0	0	1.0	2	1	0	0	0	0	3.0
SAN FRANCISCO	11/15/18		5	0-0	.000	0-0	.000	0-0	.000	0	0	0	0.7	1	0	0	0	0	0	2.0
vs FGCU	11/23/18		8	1-3	.333	1-3	.333	0-0	.000	0	0	0	0.5	0	0	0	0	0	3	2.3
vs American	11/24/18		4	0-1	.000	0-1	.000	0-0	.000	0	0	0	0.4	1	0	0	0	0	0	1.8
at Hawaii	11/25/18		2	0-0	.000	0-0	.000	0-0	.000	0	0	0	0.3	0	0	0	0	0	0	1.5
at Gonzaga	12/2/18		0	0-0	.000	0-0	.000	0-0	.000	0	0	0	0.3	0	0	0	0	0	0	1.3
BAYLOR	12/15/18		1	0-0	.000	0-0	.000	0-0	.000	0	0	0	0.3	0	0	0	0	0	0	1.1
Totals		0	36	3-10	.300	2-8	.250	1-1	1.000	0	2	2	0.3	4	1	1	0	0	9	1.1

## #23 Williams, Kiana

Opponent	Date	gs	min	Total		3-Pointers		Free throws		Rebounds				pf	a	t/o	blk	stl	pts	avg
				fg-fga	pct	3fg-fga	pct	ft-fa	pct	off	def	tot	avg							
UC DAVIS	11/7/18	*	18	5-8	.625	3-5	.600	1-2	.500	0	1	1	1.0	0	3	2	0	0	14	14.0
IDAHO	11/11/18	*	28	7-10	.700	4-7	.571	1-1	1.000	0	3	3	2.0	1	9	2	0	1	19	16.5
SAN FRANCISCO	11/15/18	*	26	8-13	.615	4-6	.667	1-1	1.000	0	0	0	1.3	1	3	2	0	0	21	18.0
vs FGCU	11/23/18	*	35	6-10	.600	5-8	.625	0-0	.000	0	6	6	2.5	0	2	4	0	1	17	17.8
vs American	11/24/18	*	33	3-12	.250	2-6	.333	1-2	.500	0	0	0	2.0	2	7	3	0	0	9	16.0
at Hawaii	11/25/18	*	35	4-9	.444	0-5	.000	1-2	.500	0	4	4	2.3	0	3	1	0	2	9	14.8
at Gonzaga	12/2/18	*	40	7-17	.412	2-6	.333	2-2	1.000	0	1	1	2.1	2	3	4	0	1	18	15.3
BAYLOR	12/15/18	*	40	5-16	.313	3-10	.300	0-0	.000	0	1	1	2.0	2	5	2	0	2	13	15.0
Totals		8	255	45-95	.474	23-53	.434	7-10	.700	0	16	16	2.0	8	35	20	0	7	120	15.0

## #24 Hull, Lacie

Opponent	Date	gs	min	Total		3-Pointers		Free throws		Rebounds				pf	a	t/o	blk	stl	pts	avg
				fg-fga	pct	3fg-fga	pct	ft-fa	pct	off	def	tot	avg							
UC DAVIS	11/7/18		17	1-5	.200	0-3	.000	0-0	.000	0	3	3	3.0	0	0	1	0	2	2	2.0
IDAHO	11/11/18		12	0-2	.000	0-0	.000	0-0	.000	2	0	2	2.5	3	2	0	1	0	0	1.0
SAN FRANCISCO	11/15/18		13	2-5	.400	2-4	.500	0-0	.000	0	1	1	2.0	2	0	0	0	0	6	2.7
vs FGCU	11/23/18		22	1-3	.333	1-2	.500	0-0	.000	1	3	4	2.5	3	4	0	0	2	3	2.8
vs American	11/24/18		33	0-3	.000	0-1	.000	0-0	.000	0	3	3	2.6	1	0	2	0	7	0	2.2
at Hawaii	11/25/18		28	3-4	.750	2-3	.667	0-0	.000	0	3	3	2.7	0	6	2	2	3	8	3.2
at Gonzaga	12/2/18	*	37	2-3	.667	1-2	.500	4-4	1.000	1	0	1	2.4	2	3	1	0	3	9	4.0
BAYLOR	12/15/18	*	22	1-6	.167	1-3	.333	0-0	.000	2	0	2	2.4	3	0	1	0	1	3	3.9
Totals		2	184	10-31	.323	7-18	.389	4-4	1.000	6	13	19	2.4	14	15	7	3	18	31	3.9

## #54 Brown, Jenna

Opponent	Date	gs	min	Total		3-Pointers		Free throws		Rebounds				pf	a	t/o	blk	stl	pts	avg
				fg-fga	pct	3fg-fga	pct	ft-fa	pct	off	def	tot	avg							
UC DAVIS	11/7/18		19	2-2	1.000	0-0	.000	0-2	.000	0	3	3	3.0	1	2	3	0	0	4	4.0
IDAHO	11/11/18		13	3-6	.500	1-4	.250	0-0	.000	0	3	3	3.0	0	3	1	0	0	7	5.5
SAN FRANCISCO	11/15/18		9	1-4	.250	0-1	.000	1-2	.500	0	2	2	2.7	1	0	0	0	0	3	4.7
vs FGCU	11/23/18		4	0-2	.000	0-0	.000	0-0	.000	0	0	0	2.0	0	1	0	0	0	0	3.5
vs American	11/24/18		12	1-4	.250	0-1	.000	2-3	.667	0	3	3	2.2	0	1	0	0	0	4	3.6
at Hawaii	11/25/18		14	0-1	.000	0-1	.000	0-0	.000	0	0	0	1.8	2	0	0	0	0	0	3.0
at Gonzaga	12/2/18		7	0-0	.000	0-0	.000	1-2	.500	0	0	0	1.6	1	1	0	0	0	1	2.7
BAYLOR	12/15/18		8	0-0	.000	0-0	.000	0-0	.000	0	1	1	1.5	0	2	0	0	0	0	2.4
Totals		0	86	7-19	.368	1-7	.143	4-9	.444	0	12	12	1.5	5	10	5	0	0	19	2.4

## Stanford Women's Basketball Individual Career History

### Brewer, Mikaela

Season	gp-gs	min/avg	Total		3-Point		F-Throws		Rebounds				Scoring							
			fg-fga	pct	fg-fga	pct	ft-fga	pct	off	def	tot	avg	pf	fo	ast	to	blk	stl	pts	avg
2016-17	10-0	60/6.0	7-23	.304	5-16	.313	0-0	.000	1	5	6	0.6	3	0	4	7	0	1	19	1.9
2017-18	17-0	31/1.8	2-14	.143	1-9	.111	0-0	.000	0	1	1	0.1	0	0	2	3	0	0	5	0.3
2018-19	4-0	12/3.0	2-4	.500	0-2	.000	2-2	1.000	0	1	1	0.3	1	0	0	1	1	0	6	1.5
<b>TOTAL</b>	<b>31-0</b>	<b>103/3.3</b>	<b>11-41</b>	<b>.268</b>	<b>6-27</b>	<b>.222</b>	<b>2-2</b>	<b>1.000</b>	<b>1</b>	<b>7</b>	<b>8</b>	<b>0.3</b>	<b>4</b>	<b>0</b>	<b>6</b>	<b>11</b>	<b>1</b>	<b>1</b>	<b>30</b>	<b>1.0</b>

## SINGLE-GAME HIGHS [all-time ranking]:

Points: 6, Cal Poly -- 11/11/16

Rebounds: 2, Cal Poly -- 11/11/16

Assists: 2, CSUN -- 11/20/16; vs Wichita St. -- 11/25/16

Steals: 1, UC Davis -- 12/4/16

Blocks: 1, UC Davis -- 11/7/18; UC Davis -- 11/07/18

FG made: 2, Cal Poly -- 11/11/16; vs Wichita St. -- 11/25/16

FG attempts: 6, CSUN -- 11/20/16; vs Wichita St. -- 11/25/16

3FG made: 2, Cal Poly -- 11/11/16

3FG attempts: 5, vs Wichita St. -- 11/25/16

FT made: 2, San Francisco -- 11/15/18; San Francisco -- 11/15/18

FT attempts: 2, San Francisco -- 11/15/18; San Francisco -- 11/15/18

### Brown, Jenna

Season	gp-gs	min/avg	Total		3-Point		F-Throws		Rebounds				Scoring							
			fg-fga	pct	fg-fga	pct	ft-fga	pct	off	def	tot	avg	pf	fo	ast	to	blk	stl	pts	avg
2018-19	8-0	86/10.8	7-19	.368	1-7	.143	4-9	.444	0	12	12	1.5	5	0	10	5	0	0	19	2.4
<b>TOTAL</b>	<b>8-0</b>	<b>86/10.8</b>	<b>7-19</b>	<b>.368</b>	<b>1-7</b>	<b>.143</b>	<b>4-9</b>	<b>.444</b>	<b>0</b>	<b>12</b>	<b>12</b>	<b>1.5</b>	<b>5</b>	<b>0</b>	<b>10</b>	<b>5</b>	<b>0</b>	<b>0</b>	<b>19</b>	<b>2.4</b>

## SINGLE-GAME HIGHS [all-time ranking]:

Points: 7, Idaho -- 11/11/18; Idaho -- 11/11/18

Rebounds: 3, 5 times

Assists: 3, Idaho -- 11/11/18; Idaho -- 11/11/18

FG made: 3, Idaho -- 11/11/18; Idaho -- 11/11/18

FG attempts: 6, Idaho -- 11/11/18; Idaho -- 11/11/18

3FG made: 1, Idaho -- 11/11/18; Idaho -- 11/11/18

3FG attempts: 4, Idaho -- 11/11/18; Idaho -- 11/11/18

FT made: 2, vs American -- 11/24/18

FT attempts: 3, vs American -- 11/24/18

### Carrington, DiJonai

Season	gp-gs	min/avg	Total		3-Point		F-Throws		Rebounds				Scoring							
			fg-fga	pct	fg-fga	pct	ft-fga	pct	off	def	tot	avg	pf	fo	ast	to	blk	stl	pts	avg
2016-17	35-0	274/7.8	35-79	.443	5-21	.238	11-19	.579	21	59	80	2.3	36	0	14	24	3	19	86	2.5
2017-18	32-7	721/22.5	107-267	.401	30-107	.280	39-57	.684	51	127	178	5.6	65	0	58	69	7	46	283	8.8
2018-19	8-8	169/21.1	26-58	.448	6-18	.333	21-33	.636	8	32	40	5.0	13	0	17	11	1	12	79	9.9
<b>TOTAL</b>	<b>75-15</b>	<b>1164/15.5</b>	<b>168-404</b>	<b>.416</b>	<b>41-146</b>	<b>.281</b>	<b>71-109</b>	<b>.651</b>	<b>80</b>	<b>218</b>	<b>298</b>	<b>4.0</b>	<b>114</b>	<b>0</b>	<b>89</b>	<b>104</b>	<b>11</b>	<b>77</b>	<b>448</b>	<b>6.0</b>

## SINGLE-GAME HIGHS [all-time ranking]:

Points: 24, vs Kent State -- 11/23/17; vs Kent State -- 11/23/17

Rebounds: 22, UC Riverside -- 11/17/17; UC Riverside -- 11/17/17

Assists: 5, 4 times

Steals: 4, at USC -- 1/19/18

Blocks: 1, 12 times

FG made: 10, vs Kent State -- 11/23/17; vs Kent State -- 11/23/17

FG attempts: 17, UC Riverside -- 11/17/17; UC Riverside -- 11/17/17

3FG made: 3, vs UConn -- 11/12/17; at San Francisco -- 11/29/17; vs UConn -- 11/12/17

3FG attempts: 8, 4 times

FT made: 12, vs FGCU -- 11/23/18

FT attempts: 15, vs FGCU -- 11/23/18



## Stanford Women's Basketball Individual Career History

### Coffee, Shannon

Season	gp-gs	min/avg	Total		3-Point		F-Throws		Rebounds				Scoring							
			fg-fga	pct	fg-fga	pct	ft-fta	pct	off	def	tot	avg	pf	fo	ast	to	blk	stl	pts	avg
2015-16	12-0	45/3.8	9-21	.429	0-2	.000	3-13	.231	3	10	13	1.1	3	0	1	7	1	0	21	1.8
2016-17	20-0	86/4.3	17-27	.630	1-4	.250	9-17	.529	4	17	21	1.1	9	0	3	10	3	2	44	2.2
2017-18	27-2	112/4.1	12-38	.316	7-20	.350	1-2	.500	5	19	24	0.9	12	0	6	14	4	3	32	1.2
2018-19	8-0	51/6.4	6-12	.500	4-7	.571	0-0	.000	1	6	7	0.9	3	0	3	2	1	0	16	2.0
<b>TOTAL</b>	<b>67-2</b>	<b>294/4.4</b>	<b>44-98</b>	<b>.449</b>	<b>12-33</b>	<b>.364</b>	<b>13-32</b>	<b>.406</b>	<b>13</b>	<b>52</b>	<b>65</b>	<b>1.0</b>	<b>27</b>	<b>0</b>	<b>13</b>	<b>33</b>	<b>9</b>	<b>5</b>	<b>113</b>	<b>1.7</b>

## SINGLE-GAME HIGHS [all-time ranking]:

Points: 14, at Baylor -- 12/3/17

Rebounds: 7, vs Wichita St. -- 11/25/16

Assists: 3, UNLV -- 12/16/17

Steals: 1, 5 times

Blocks: 1, 10 times

FG made: 5, vs Wichita St. -- 11/25/16; at Baylor -- 12/3/17

FG attempts: 11, at Baylor -- 12/3/17

3FG made: 4, at Baylor -- 12/3/17

3FG attempts: 8, at Baylor -- 12/3/17

FT made: 3, vs Northeastern -- 11/24/16; vs Wichita St. -- 11/25/16

FT attempts: 10, CSU Bakersfield -- 12/22/15

### Dodson, Maya

Season	gp-gs	min/avg	Total		3-Point		F-Throws		Rebounds				Scoring							
			fg-fga	pct	fg-fga	pct	ft-fta	pct	off	def	tot	avg	pf	fo	ast	to	blk	stl	pts	avg
2017-18	33-4	372/11.3	51-103	.495	0-0	.000	13-33	.394	32	35	67	2.0	38	1	5	26	27	2	115	3.5
2018-19	8-0	165/20.6	28-49	.571	0-0	.000	8-19	.421	16	15	31	3.9	16	0	12	6	14	4	64	8.0
<b>TOTAL</b>	<b>41-4</b>	<b>537/13.1</b>	<b>79-152</b>	<b>.520</b>	<b>0-0</b>	<b>.000</b>	<b>21-52</b>	<b>.404</b>	<b>48</b>	<b>50</b>	<b>98</b>	<b>2.4</b>	<b>54</b>	<b>1</b>	<b>17</b>	<b>32</b>	<b>41</b>	<b>6</b>	<b>179</b>	<b>4.4</b>

## SINGLE-GAME HIGHS [all-time ranking]:

Points: 11, UNLV -- 12/16/17

Rebounds: 7, at Ohio State -- 11/10/17; at Baylor -- 12/3/17; at Ohio State -- 11/10/17

Assists: 6, San Francisco -- 11/15/18; San Francisco -- 11/15/18

Steals: 2, UC Davis -- 11/7/18; UC Davis -- 11/07/18

Blocks: 4, San Francisco -- 11/15/18; Western Illinois -- 12/18/17; San Francisco -- 11/15/18

FG made: 5, 6 times

FG attempts: 11, UNLV -- 12/16/17

FT made: 3, Baylor -- 12/15/18

FT attempts: 5, San Francisco -- 11/15/18; at Gonzaga -- 12/2/18; San Francisco -- 11/15/18

### Fingall, Nadia

Season	gp-gs	min/avg	Total		3-Point		F-Throws		Rebounds				Scoring							
			fg-fga	pct	fg-fga	pct	ft-fta	pct	off	def	tot	avg	pf	fo	ast	to	blk	stl	pts	avg
2016-17	36-8	419/11.6	67-132	.508	2-13	.154	19-37	.514	42	51	93	2.6	52	0	22	30	13	13	155	4.3
2017-18	34-0	398/11.7	41-92	.446	13-31	.419	18-26	.692	32	75	107	3.1	52	1	19	22	13	16	113	3.3
2018-19	8-8	169/21.1	30-57	.526	5-15	.333	8-15	.533	20	20	40	5.0	18	0	16	11	4	5	73	9.1
<b>TOTAL</b>	<b>78-16</b>	<b>986/12.6</b>	<b>138-281</b>	<b>.491</b>	<b>20-59</b>	<b>.339</b>	<b>45-78</b>	<b>.577</b>	<b>94</b>	<b>146</b>	<b>240</b>	<b>3.1</b>	<b>122</b>	<b>1</b>	<b>57</b>	<b>63</b>	<b>30</b>	<b>34</b>	<b>341</b>	<b>4.4</b>

## SINGLE-GAME HIGHS [all-time ranking]:

Points: 24, vs FGCU -- 11/23/18

Rebounds: 8, 5 times

Assists: 5, vs FGCU -- 11/23/18

Steals: 3, Utah -- 2/12/17

Blocks: 2, 6 times

FG made: 11, vs FGCU -- 11/23/18

FG attempts: 14, vs FGCU -- 11/23/18

3FG made: 2, 4 times

3FG attempts: 4, vs American -- 11/24/18; at Baylor -- 12/3/17

FT made: 4, at Arizona -- 1/1/17

FT attempts: 5, Idaho -- 11/11/18; at George Washington -- 12/21/16; Idaho -- 11/11/18

## Stanford Women's Basketball Individual Career History

### Hull, Lacie

Season	gp-gs	min/avg	Total		3-Point		F-Throws		Rebounds				Scoring							
			fg-fga	pct	fg-fga	pct	ft-fta	pct	off	def	tot	avg	pf	fo	ast	to	blk	stl	pts	avg
2018-19	8-2	184/23.0	10-31	.323	7-18	.389	4-4	1.000	6	13	19	2.4	14	0	15	7	3	18	31	3.9
<b>TOTAL</b>	<b>8-2</b>	<b>184/23.0</b>	<b>10-31</b>	<b>.323</b>	<b>7-18</b>	<b>.389</b>	<b>4-4</b>	<b>1.000</b>	<b>6</b>	<b>13</b>	<b>19</b>	<b>2.4</b>	<b>14</b>	<b>0</b>	<b>15</b>	<b>7</b>	<b>3</b>	<b>18</b>	<b>31</b>	<b>3.9</b>

## SINGLE-GAME HIGHS [all-time ranking]:

Points: 9, at Gonzaga -- 12/2/18

Rebounds: 4, vs FGCU -- 11/23/18

Assists: 6, at Hawaii -- 11/25/18

Steals: 7, vs American -- 11/24/18

Blocks: 2, at Hawaii -- 11/25/18

FG made: 3, at Hawaii -- 11/25/18

FG attempts: 6, Baylor -- 12/15/18

3FG made: 2, San Francisco -- 11/15/18; at Hawaii -- 11/25/18; San Francisco -- 11/15/18

3FG attempts: 4, San Francisco -- 11/15/18; San Francisco -- 11/15/18

FT made: 4, at Gonzaga -- 12/2/18

FT attempts: 4, at Gonzaga -- 12/2/18

### Hull, Lexie

Season	gp-gs	min/avg	Total		3-Point		F-Throws		Rebounds				Scoring							
			fg-fga	pct	fg-fga	pct	ft-fta	pct	off	def	tot	avg	pf	fo	ast	to	blk	stl	pts	avg
2018-19	3-3	77/25.7	12-27	.444	6-15	.400	2-2	1.000	9	12	21	7.0	8	0	3	4	3	8	32	10.7
<b>TOTAL</b>	<b>3-3</b>	<b>77/25.7</b>	<b>12-27</b>	<b>.444</b>	<b>6-15</b>	<b>.400</b>	<b>2-2</b>	<b>1.000</b>	<b>9</b>	<b>12</b>	<b>21</b>	<b>7.0</b>	<b>8</b>	<b>0</b>	<b>3</b>	<b>4</b>	<b>3</b>	<b>8</b>	<b>32</b>	<b>10.7</b>

## SINGLE-GAME HIGHS [all-time ranking]:

Points: 17, Idaho -- 11/11/18; Idaho -- 11/11/18

Rebounds: 11, UC Davis -- 11/7/18; UC Davis -- 11/07/18

Assists: 3, San Francisco -- 11/15/18; San Francisco -- 11/15/18

Steals: 4, UC Davis -- 11/7/18; UC Davis -- 11/07/18

Blocks: 2, Idaho -- 11/11/18; Idaho -- 11/11/18

FG made: 6, Idaho -- 11/11/18; Idaho -- 11/11/18

FG attempts: 12, Idaho -- 11/11/18; Idaho -- 11/11/18

3FG made: 5, Idaho -- 11/11/18; Idaho -- 11/11/18

3FG attempts: 10, Idaho -- 11/11/18; Idaho -- 11/11/18

FT made: 2, San Francisco -- 11/15/18; San Francisco -- 11/15/18

FT attempts: 2, San Francisco -- 11/15/18; San Francisco -- 11/15/18

### Jerome, Alyssa

Season	gp-gs	min/avg	Total		3-Point		F-Throws		Rebounds				Scoring							
			fg-fga	pct	fg-fga	pct	ft-fta	pct	off	def	tot	avg	pf	fo	ast	to	blk	stl	pts	avg
2017-18	34-1	337/9.9	28-70	.400	9-31	.290	4-6	.667	11	25	36	1.1	27	0	14	22	3	1	69	2.0
2018-19	8-0	108/13.5	9-26	.346	3-8	.375	11-15	.733	7	23	30	3.8	11	0	4	5	3	1	32	4.0
<b>TOTAL</b>	<b>42-1</b>	<b>445/10.6</b>	<b>37-96</b>	<b>.385</b>	<b>12-39</b>	<b>.308</b>	<b>15-21</b>	<b>.714</b>	<b>18</b>	<b>48</b>	<b>66</b>	<b>1.6</b>	<b>38</b>	<b>0</b>	<b>18</b>	<b>27</b>	<b>6</b>	<b>2</b>	<b>101</b>	<b>2.4</b>

## SINGLE-GAME HIGHS [all-time ranking]:

Points: 8, at Ohio State -- 11/10/17; at Ohio State -- 11/10/17

Rebounds: 8, UC Davis -- 11/07/18; UC Davis -- 11/7/18

Assists: 2, 6 times

Steals: 1, at USC -- 1/19/18; at Hawaii -- 11/25/18

Blocks: 2, San Francisco -- 11/15/18; San Francisco -- 11/15/18; UNLV -- 12/16/17

FG made: 3, 4 times

FG attempts: 6, vs Kent State -- 11/23/17; vs Kent State -- 11/23/17

3FG made: 2, at Ohio State -- 11/10/17; at Ohio State -- 11/10/17; at Gonzaga -- 12/2/18

3FG attempts: 4, vs Kent State -- 11/23/17; vs Kent State -- 11/23/17

FT made: 4, at Hawaii -- 11/25/18

FT attempts: 6, at Hawaii -- 11/25/18

## Stanford Women's Basketball Individual Career History

### Moschkau, Estella

Season	gp-gs	min/avg	Total		3-Point		F-Throws		Rebounds				Scoring							
			fg-fga	pct	fg-fga	pct	ft-fa	pct	off	def	tot	avg	pf	fo	ast	to	blk	stl	pts	avg
2017-18	23-0	49/2.1	4-9	.444	3-7	.429	1-2	.500	2	2	4	0.2	4	0	2	0	0	0	12	0.5
2018-19	6-0	25/4.2	4-4	1.000	3-3	1.000	0-0	.000	1	0	1	0.2	1	0	2	5	0	2	11	1.8
<b>TOTAL</b>	<b>29-0</b>	<b>74/2.6</b>	<b>8-13</b>	<b>.615</b>	<b>6-10</b>	<b>.600</b>	<b>1-2</b>	<b>.500</b>	<b>3</b>	<b>2</b>	<b>5</b>	<b>0.2</b>	<b>5</b>	<b>0</b>	<b>4</b>	<b>5</b>	<b>0</b>	<b>2</b>	<b>23</b>	<b>0.8</b>

## SINGLE-GAME HIGHS [all-time ranking]:

Points: 5, San Francisco -- 11/15/18; San Francisco -- 11/15/18

Rebounds: 2, at Arizona -- 1/5/18

Assists: 1, 6 times

Steals: 2, at Hawaii -- 11/25/18

FG made: 2, San Francisco -- 11/15/18; San Francisco -- 11/15/18

FG attempts: 2, 5 times

3FG made: 1, 9 times

3FG attempts: 2, CSU Bakersfield -- 11/19/17; CSU Bakersfield -- 11/19/17

FT made: 1, Arizona -- 1/28/18

FT attempts: 2, Arizona -- 1/28/18

### Romano, Alexa

Season	gp-gs	min/avg	Total		3-Point		F-Throws		Rebounds				Scoring							
			fg-fga	pct	fg-fga	pct	ft-fa	pct	off	def	tot	avg	pf	fo	ast	to	blk	stl	pts	avg
2015-16	17-0	59/3.5	4-10	.400	2-5	.400	2-2	1.000	1	4	5	0.3	2	0	3	4	2	0	12	0.7
2016-17	22-0	132/6.0	8-25	.320	5-14	.357	3-6	.500	3	16	19	0.9	5	0	12	10	0	8	24	1.1
2017-18	29-8	277/9.6	28-78	.359	12-41	.293	8-11	.727	5	22	27	0.9	11	0	15	15	2	12	76	2.6
2018-19	8-0	36/4.5	3-10	.300	2-8	.250	1-1	1.000	0	2	2	0.3	4	0	1	1	0	0	9	1.1
<b>TOTAL</b>	<b>76-8</b>	<b>504/6.6</b>	<b>43-123</b>	<b>.350</b>	<b>21-68</b>	<b>.309</b>	<b>14-20</b>	<b>.700</b>	<b>9</b>	<b>44</b>	<b>53</b>	<b>0.7</b>	<b>22</b>	<b>0</b>	<b>31</b>	<b>30</b>	<b>4</b>	<b>20</b>	<b>121</b>	<b>1.6</b>

## SINGLE-GAME HIGHS [all-time ranking]:

Points: 13, CSU Bakersfield -- 11/19/17; CSU Bakersfield -- 11/19/17; at San Francisco -- 11/29/17

Rebounds: 5, Yale -- 12/28/16

Assists: 3, Cal Poly -- 11/11/16; UNLV -- 12/16/17

Steals: 2, 4 times

Blocks: 1, 4 times

FG made: 5, vs Belmont -- 11/24/17; at San Francisco -- 11/29/17

FG attempts: 11, UC Riverside -- 11/17/17; UC Riverside -- 11/17/17

3FG made: 3, CSU Bakersfield -- 11/19/17; CSU Bakersfield -- 11/19/17; at San Francisco -- 11/29/17

3FG attempts: 7, UC Riverside -- 11/17/17; UC Riverside -- 11/17/17

FT made: 2, 6 times

FT attempts: 2, 10 times

### Smith, Alanna

Season	gp-gs	min/avg	Total		3-Point		F-Throws		Rebounds				Scoring							
			fg-fga	pct	fg-fga	pct	ft-fa	pct	off	def	tot	avg	pf	fo	ast	to	blk	stl	pts	avg
2015-16	34-0	400/11.8	67-155	.432	20-60	.333	29-44	.659	28	52	80	2.4	63	1	13	43	24	5	183	5.4
2016-17	38-3	735/19.3	133-286	.465	19-60	.317	62-90	.689	66	141	207	5.4	88	4	34	42	61	25	347	9.1
2017-18	35-35	995/28.4	198-418	.474	35-116	.302	43-81	.531	92	154	246	7.0	96	2	41	88	62	45	474	13.5
2018-19	8-8	186/23.3	52-90	.578	21-42	.500	23-35	.657	12	39	51	6.4	21	1	20	23	13	11	148	18.5
<b>TOTAL</b>	<b>115-46</b>	<b>2316/20.1</b>	<b>450-949</b>	<b>.474</b>	<b>95-278</b>	<b>.342</b>	<b>157-250</b>	<b>.628</b>	<b>198</b>	<b>386</b>	<b>584</b>	<b>5.1</b>	<b>268</b>	<b>8</b>	<b>108</b>	<b>196</b>	<b>160</b>	<b>86</b>	<b>1152</b>	<b>10.0</b>

## SINGLE-GAME HIGHS [all-time ranking]:

Points: 33, vs Ohio State -- 11/25/17

Rebounds: 16, vs Ohio State -- 11/25/17

Assists: 4, 5 times

Steals: 6, at California -- 2/17/18

Blocks: 6, vs New Mexico State -- 3/18/17

FG made: 14, vs Ohio State -- 11/25/17

FG attempts: 24, Western Illinois -- 12/18/17; at California -- 2/17/18

3FG made: 6, vs Dayton -- 11/28/15

3FG attempts: 11, at California -- 2/17/18

FT made: 7, UC Davis -- 11/07/18; UC Davis -- 11/7/18

FT attempts: 8, Baylor -- 12/15/18; Cornell -- 12/19/15; at California -- 2/16/17

## Stanford Women's Basketball Individual Career History

### Snizek, Marta

Season	gp-gs	min/avg	Total		3-Point		F-Throws		Rebounds				Scoring							
			fg-fga	pct	fg-fga	pct	ft-fta	pct	off	def	tot	avg	pf	fo	ast	to	blk	stl	pts	avg
2015-16	35-9	656/18.7	35-99	.354	4-17	.235	28-42	.667	8	48	56	1.6	27	0	109	63	1	21	102	2.9
2016-17	38-9	948/24.9	56-149	.376	6-20	.300	54-75	.720	6	100	106	2.8	64	0	169	93	3	51	172	4.5
2017-18	35-32	971/27.7	56-156	.359	20-59	.339	61-90	.678	7	115	122	3.5	68	1	150	78	3	38	193	5.5
<b>TOTAL</b>	<b>108-50</b>	<b>2575/23.8</b>	<b>147-404</b>	<b>.364</b>	<b>30-96</b>	<b>.313</b>	<b>143-207</b>	<b>.691</b>	<b>21</b>	<b>263</b>	<b>284</b>	<b>2.6</b>	<b>159</b>	<b>1</b>	<b>428</b>	<b>234</b>	<b>7</b>	<b>110</b>	<b>467</b>	<b>4.3</b>

## SINGLE-GAME HIGHS [all-time ranking]:

Points: 13, Arizona State -- 1/26/18; at Washington -- 2/23/18

Rebounds: 10, USC -- 12/31/17

Assists: 13, vs Washington -- 3/4/16

Steals: 6, Oregon State -- 1/8/17

Blocks: 1, 7 times

FG made: 5, Arizona State -- 1/26/18; vs Notre Dame -- 3/25/16

FG attempts: 12, vs Belmont -- 11/24/17

3FG made: 3, at Arizona State -- 1/7/18; Utah -- 2/9/18

3FG attempts: 8, vs Belmont -- 11/24/17

FT made: 6, UC Riverside -- 11/17/17; UC Riverside -- 11/17/17; vs USC -- 3/2/18

FT attempts: 9, Tennessee -- 12/16/15

### Williams, Kiana

Season	gp-gs	min/avg	Total		3-Point		F-Throws		Rebounds				Scoring							
			fg-fga	pct	fg-fga	pct	ft-fta	pct	off	def	tot	avg	pf	fo	ast	to	blk	stl	pts	avg
2017-18	35-26	899/25.7	128-309	.414	71-185	.384	36-44	.818	4	54	58	1.7	38	0	67	40	5	30	363	10.4
2018-19	8-8	255/31.9	45-95	.474	23-53	.434	7-10	.700	0	16	16	2.0	8	0	35	20	0	7	120	15.0
<b>TOTAL</b>	<b>43-34</b>	<b>1154/26.8</b>	<b>173-404</b>	<b>.428</b>	<b>94-238</b>	<b>.395</b>	<b>43-54</b>	<b>.796</b>	<b>4</b>	<b>70</b>	<b>74</b>	<b>1.7</b>	<b>46</b>	<b>0</b>	<b>102</b>	<b>60</b>	<b>5</b>	<b>37</b>	<b>483</b>	<b>11.2</b>

## SINGLE-GAME HIGHS [all-time ranking]:

Points: 26, California -- 2/15/18

Rebounds: 6, vs FGCU -- 11/23/18; Utah -- 2/9/18

Assists: 9, Idaho -- 11/11/18; Idaho -- 11/11/18

Steals: 4, California -- 2/15/18

Blocks: 1, 6 times

FG made: 9, vs Arizona State -- 3/3/18

FG attempts: 17, at Gonzaga -- 12/2/18

3FG made: 6, vs Arizona State -- 3/3/18

3FG attempts: 11, Western Illinois -- 12/18/17; at Baylor -- 12/3/17; at Oregon -- 2/4/18

FT made: 7, California -- 2/15/18

FT attempts: 9, California -- 2/15/18

### Wilson, Anna

Season	gp-gs	min/avg	Total		3-Point		F-Throws		Rebounds				Scoring							
			fg-fga	pct	fg-fga	pct	ft-fta	pct	off	def	tot	avg	pf	fo	ast	to	blk	stl	pts	avg
2016-17	6-0	48/8.0	6-13	.462	4-8	.500	1-3	.333	0	6	6	1.0	4	0	5	7	0	3	17	2.8
2017-18	21-2	224/10.7	24-81	.296	20-69	.290	2-4	.500	1	22	23	1.1	22	0	8	13	1	10	70	3.3
2018-19	7-3	77/11.0	7-23	.304	4-18	.222	5-6	.833	3	12	15	2.1	11	0	7	3	0	7	23	3.3
<b>TOTAL</b>	<b>34-5</b>	<b>349/10.3</b>	<b>37-117</b>	<b>.316</b>	<b>28-95</b>	<b>.295</b>	<b>8-13</b>	<b>.615</b>	<b>4</b>	<b>40</b>	<b>44</b>	<b>1.3</b>	<b>37</b>	<b>0</b>	<b>20</b>	<b>23</b>	<b>1</b>	<b>20</b>	<b>110</b>	<b>3.2</b>

## SINGLE-GAME HIGHS [all-time ranking]:

Points: 21, vs Ohio State -- 11/25/17

Rebounds: 6, Western Illinois -- 12/18/17

Assists: 3, vs FGCU -- 11/23/18

Steals: 3, Western Illinois -- 12/18/17

Blocks: 1, CSU Bakersfield -- 11/19/17; CSU Bakersfield -- 11/19/17

FG made: 7, vs Ohio State -- 11/25/17

FG attempts: 17, Western Illinois -- 12/18/17

3FG made: 7, vs Ohio State -- 11/25/17

3FG attempts: 15, Western Illinois -- 12/18/17

FT made: 2, 4 times

FT attempts: 3, at Arizona -- 1/1/17





Official Basketball Box Score -- Game Totals -- Final Statistics  
American vs Stanford  
11/24/18 12:00 PM at Honolulu, O'ahu (Stan Sheriff Center)

American 49 • 3-2

Table with 12 columns: #, Player, FG-FGA, 3-Ptr, FT-FTA, Rebounds (Off, Def, Tot), PF, TP, A, TO, Blk, Stl, Min. Rows include Carl, Cecily; Lewis, Kaitlyn; Sanders, Indeya; Marenyl, Katie; Koskimies, Elna; Bartner, Morgan; Fisher, Emily; Edwards, Jade; Cleveland, TaeKenya; Brown, Taylor; Doring, Maddie; Graytok, Laura; Team; Totals.

1st FG %: 3-12 25.0% 2nd: 6-14 42.9% 3rd: 5-8 62.5% 4th: 3-12 25.0% Game: 17-46 37.0% Deadball Rebounds: 3  
3FG %: 0-3 0.0% 1-3 33.3% 1-2 50.0% 1-4 25.0% 3-6 50.0% 3-6 50.0%  
FT %: 4-6 66.7% 0-0 0.0% 5-6 83.3% 3-3 100.0% 12-15 80.0%

Stanford 71 • 5-0

Table with 12 columns: #, Player, FG-FGA, 3-Ptr, FT-FTA, Rebounds (Off, Def, Tot), PF, TP, A, TO, Blk, Stl, Min. Rows include Fingall, Nadia; Smith, Alanna; Wilson, Anna; Carrington, Dionai; Williams, Kiana; Coffee, Shannon; Jerome, Alyssa; Dodson, Maya; Moschkau, Estella; Romano, Alexa; Hull, Lacie; Brown, Jenna; Team; Totals.

1st FG %: 6-18 33.3% 2nd: 4-13 30.8% 3rd: 7-16 43.8% 4th: 9-15 60.0% Game: 26-62 41.9% Deadball Rebounds: 5  
3FG %: 3-8 37.5% 1-4 25.0% 0-5 0.0% 3-5 60.0% 7-22 31.8%  
FT %: 2-3 66.7% 1-4 25.0% 1-2 50.0% 5-6 83.3% 12-17 70.6%

Officials: Matt Shute, Sean Martin, Tim Tamashiro  
Technical fouls: American-None. Stanford-None.  
Attendance: 1268

Score by periods

Table with 2 columns: American, Stanford. Rows for 1st, 2nd, 3rd, 4th, Total periods and Points, In, Off, 2nd, Fast, Bench.

Last FG - AU 4th-01:17, STAN 4th-00:48.  
Largest lead - AU None, STAN by 22 4th-02:38.  
AU led for 00:00. STAN led for 38:13. Game was tied for 01:47.

Official Basketball Box Score -- Game Totals -- Final Statistics  
Stanford vs Hawaii  
11/25/18 2:30 PM at Honolulu, O'ahu (Stan Sheriff Center)

Stanford 81 • 6-0

Table with 12 columns: #, Player, FG-FGA, 3-Ptr, FT-FTA, Rebounds (Off, Def, Tot), PF, TP, A, TO, Blk, Stl, Min. Rows include Fingall, Nadia; Smith, Alanna; Wilson, Anna; Carrington, Dionai; Williams, Kiana; Coffee, Shannon; Brewer, Mikaela; Jerome, Alyssa; Dodson, Maya; Moschkau, Estella; Romano, Alexa; Hull, Lacie; Brown, Jenna; Team; Totals.

1st FG %: 5-14 35.7% 2nd: 11-18 61.1% 3rd: 9-13 69.2% 4th: 5-8 62.5% Game: 30-53 56.6% Deadball Rebounds: 3  
3FG %: 0-7 0.0% 3-6 50.0% 3-5 60.0% 2-3 66.7%  
FT %: 5-5 100.0% 0-0 0.0% 3-6 50.0% 5-6 83.3%

Hawaii 59 • 1-7

Table with 12 columns: #, Player, FG-FGA, 3-Ptr, FT-FTA, Rebounds (Off, Def, Tot), PF, TP, A, TO, Blk, Stl, Min. Rows include Salanoa, Leah; Woodfolk, Makenna; Odum, Rachel; Middap, Courtney; Kanoa, Tia; Tago, Julissa; Reier, Savannah; Joseph, Myrrah; Rewers, Lauren; Alexander, Jadynn; Atweller, Amy; Team; Totals.

1st FG %: 3-12 25.0% 2nd: 6-12 50.0% 3rd: 8-13 61.5% 4th: 5-17 29.4% Game: 22-54 40.7% Deadball Rebounds: 0  
3FG %: 2-2 100.0% 2-3 66.7% 7-9 77.8% 2-8 25.0%  
FT %: 0-0 0.0% 0-0 0.0% 1-1 100.0% 1-1 100.0%

Officials: Lajwan Robinson, Matt Shute, Ethan Kahoano  
Technical fouls: Stanford-None. Hawaii-None.  
Attendance: 1383  
Game called at 00:48.2 due to injury to Stanford player.

Score by periods

Table with 2 columns: Stanford, Hawaii. Rows for 1st, 2nd, 3rd, 4th, Total periods and Points, In, Off, 2nd, Fast, Bench.

Last FG - STAN 4th-04:09, UH 4th-02:25.  
Largest lead - STAN by 25 4th-02:56, UH by 2 1st-04:44.  
STAN led for 38:57. UH led for 00:24. Game was tied for 00:24.

Official Basketball Box Score -- Game Totals -- Final Statistics  
Stanford vs Gonzaga  
12/2/18 2:00 PM at Spokane, WA (McCarthy Athletic Center)

Stanford 73 • 6-1

Table with 12 columns: #, Player, FG-FGA, 3-Ptr, FT-FTA, Rebounds (Off, Def, Tot), PF, TP, A, TO, Blk, Stl, Min. Rows include Fingall, Nadia; Smith, Alanna; Hull, Lacie; Carrington, Dionai; Williams, Kiana; Coffee, Shannon; Jerome, Alyssa; Dodson, Maya; Romano, Alexa; Brown, Jenna; Team; Totals.

1st FG %: 6-14 42.9% 2nd: 5-14 35.7% 3rd: 2-12 16.7% 4th: 12-17 70.6% Game: 25-57 43.9% Deadball Rebounds: 5  
3FG %: 4-6 66.7% 2-5 40.0% 0-4 0.0% 3-7 42.9%  
FT %: 1-3 33.3% 3-4 75.0% 5-10 50.0% 5-7 71.4%

Gonzaga 79 • 8-1

Table with 12 columns: #, Player, FG-FGA, 3-Ptr, FT-FTA, Rebounds (Off, Def, Tot), PF, TP, A, TO, Blk, Stl, Min. Rows include Rice, Zykeria; Wirth, Leeanne; Stockton, Laura; Campbell, Katie; Smith, Chandler; Wirth, Jenn; Kempson, Jill; Towns, Melody; Team; Totals.

1st FG %: 7-14 50.0% 2nd: 9-15 60.0% 3rd: 5-12 41.7% 4th: 5-7 71.4% Game: 26-48 54.2% Deadball Rebounds: 0  
3FG %: 4-6 66.7% 2-4 50.0% 1-2 50.0% 1-1 100.0%  
FT %: 4-4 100.0% 4-5 80.0% 10-12 83.3% 19-22 86.4%

Officials: Lisa Jones, Michael Price, Richard Waters  
Technical fouls: Stanford-None. Gonzaga-None.  
Attendance: 6000

Score by periods

Table with 2 columns: Stanford, Gonzaga. Rows for 1st, 2nd, 3rd, 4th, Total periods and Points, In, Off, 2nd, Fast, Bench.

Last FG - STAN 4th-00:37, GON 4th-00:13.  
Largest lead - STAN by 5 1st-08:43, GON by 18 3rd-02:00.  
STAN led for 03:57. GON led for 34:47. Game was tied for 00:46.

Official Basketball Box Score -- Game Totals -- Final Statistics  
Baylor vs Stanford  
12/15/18 12:00 PM at Stanford, Calif. (Maple Pavilion)

Baylor 63 • 8-1

Table with 12 columns: #, Player, FG-FGA, 3-Ptr, FT-FTA, Rebounds (Off, Def, Tot), PF, TP, A, TO, Blk, Stl, Min. Rows include Cox, Lauren; Brown, Kalani; Richards, DiDi; Landrum, Juicy; Jackson, Chloe; Smith, NaLyssa; Oliver, Trinity; Scott-Grayson, H.; DeCosta, Aquira; Ursin, Moon; Egbo, Queen; Bickle, Caitlin; Team; Totals.

1st FG %: 5-16 31.3% 2nd: 2-20 10.0% 3rd: 7-15 46.7% 4th: 8-12 66.7% Game: 22-63 34.9% Deadball Rebounds: 6,1  
3FG %: 0-1 0.0% 1-2 50.0% 1-1 100.0% 1-3 33.3%  
FT %: 3-4 75.0% 6-8 75.0% 3-4 75.0% 4-4 100.0%

Stanford 68 • 7-1

Table with 12 columns: #, Player, FG-FGA, 3-Ptr, FT-FTA, Rebounds (Off, Def, Tot), PF, TP, A, TO, Blk, Stl, Min. Rows include Fingall, Nadia; Smith, Alanna; Hull, Lacie; Carrington, Dionai; Williams, Kiana; Coffee, Shannon; Wilson, Anna; Jerome, Alyssa; Dodson, Maya; Romano, Alexa; Brown, Jenna; Team; Totals.

1st FG %: 5-19 26.3% 2nd: 8-15 53.3% 3rd: 6-13 46.2% 4th: 4-13 30.8% Game: 23-60 38.3% Deadball Rebounds: 10,4  
3FG %: 2-11 18.2% 5-9 55.6% 4-5 80.0% 2-5 40.0%  
FT %: 5-8 62.5% 3-7 42.9% 1-2 50.0% 0-4 0.0%

Officials: Tiffany Bird, Lisa Jones, Michol Murray  
Technical fouls: Baylor-None. Stanford-None.  
Attendance: 3440

Score by periods

Table with 2 columns: Baylor, Stanford. Rows for 1st, 2nd, 3rd, 4th, Total periods and Points, In, Off, 2nd, Fast, Bench.

Last FG - BU 4th-02:58, STAN 4th-03:08.  
Largest lead - BU by 2 1st-05:08, STAN by 18 2nd-02:15.  
BU led for 02:03. STAN led for 36:30. Game was tied for 01:27.

**TV/RADIO ROSTER**



**#2**  
**SHANNON COFFEE**  
 C • 6-5 • SR  
 DAYTON, OHIO  
 CENTERVILLE



**#3**  
**ANNA WILSON**  
 G • 5-9 • JR  
 SEATTLE, WASH.  
 BELLEVUE



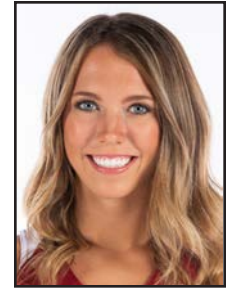
**#4**  
**NADIA FINGALL**  
 F • 6-3 • JR  
 NAVARRE, FLA.  
 CHOCTAWHATCHEE



**#10**  
**ALYSSA JEROME**  
 F • 6-3 • SO  
 TORONTO, CANADA  
 HARBORD COLLEGIATE



**#11**  
**ALANNA SMITH**  
 F • 6-4 • SR  
 MELBOURNE, AUSTRALIA  
 WESLEY COLLEGE



**#12**  
**LEXIE HULL**  
 F • 6-0 • FR  
 SPOKANE, WASH.  
 CENTRAL VALLEY



**#13**  
**MARTA SNIEZEK**  
 G • 5-8 • SR  
 MCLEAN, VA.  
 NATIONAL CATHEDRAL [D.C.]



**#14**  
**MIKAELA BREWER**  
 G • 5-10 • JR  
 BARRIE, ONTARIO, CANADA  
 INNISDALE SECONDARY



**#15**  
**MAYA DODSON**  
 F • 6-3 • SO  
 ALPHARETTA, GA.  
 ST. FRANCIS



**#20**  
**ESTELLA MOSCHKAU**  
 F • 6-1 • SO  
 MADISON, WIS.  
 EDGEWOOD



**#21**  
**DIJONAI CARRINGTON**  
 G • 5-11 • JR  
 SAN DIEGO, CALIF.  
 HORIZON CHRISTIAN



**#22**  
**ALEXA ROMANO**  
 G • 5-10 • SR  
 ALBUQUERQUE, N.M.  
 LA CUEVA



**#23**  
**KIANA WILLIAMS**  
 G • 5-8 • SO  
 SAN ANTONIO, TEXAS  
 KAREN WAGNER



**#24**  
**LACIE HULL**  
 F • 6-1 • FR  
 SPOKANE, WASH.  
 CENTRAL VALLEY



**#54**  
**JENNA BROWN**  
 G • 5-10 • FR  
 ATLANTA, GA.  
 THE LOVETT SCHOOL



**TARA VANDERVEER**  
 HEAD COACH  
 33RD YEAR



**KATE PAYE**  
 ASSOCIATE HEAD COACH  
 12TH YEAR



**TEMPIE BROWN**  
 ASSISTANT COACH  
 SIXTH YEAR



**LINDY LA ROCQUE**  
 ASSISTANT COACH  
 SECOND YEAR