



GOSTANFORD.COM • #GOSTANFORD



2018-19 SCHEDULE AND RESULTS

NOVEMBER

1	Vanguard (Ex.)	W, 87-36
7	UC Davis	W, 71-43
11	Idaho	W, 115-71
15	San Francisco	W, 96-62
18	Ohio State (P12N)	canceled
23	vs. FGCU (1)	W, 88-65
24	vs. American (1)	W, 71-49
25	at Hawaii (1)	W, 81-59

DECEMBER

2	at Gonzaga	2 p.m.
15	#3/4 Baylor (P12N)	noon
18	at Tennessee (SECN)	6 p.m. ET
21	at Buffalo	noon ET
29	CSUN	2 p.m.

JANUARY

4	USC * (P12N)	8 p.m.
6	UCLA * (P12N)	1 p.m.
11	at Arizona State * (P12N)	7 p.m. MT
13	at Arizona * (P12N)	noon MT
18	Washington * (P12N)	7 p.m.
20	Washington State * (P12N)	noon
25	at Colorado * (P12N)	7 p.m. MT
27	at Utah *	noon MT
31	at California * (P12N)	8 p.m.

FEBRUARY

2	California * (P12N)	4 p.m.
8	Oregon State * (P12N)	6 p.m.
10	Oregon * (ESPN2)	1 p.m.
15	at UCLA * (P12N)	6 p.m.
17	at USC * (P12N)	noon
22	Arizona *	7 p.m.
24	Arizona State * (P12N)	1 p.m.

MARCH

1	at Washington State * (P12N)	7 p.m.
3	at Washington * (P12N)	2 p.m.
7-10	Pac-12 Tournament (2)	TBD

(1) - Rainbow Wahine Showdown; Honolulu, Hawaii

(2) - Pac-12 Tournament; Las Vegas, Nev.

* - Pac-12 game;

All times local and subject to change;

Home games in Bold;

[#/#] - Indicates national ranking (AP/USA Today)

(P12N) - Game televised on Pac-12 Networks

(ESPN2/SECN) - Game televised on ESPN family of networks

Athletic Communications

Director John Cantalupi
 Cell Phone (650) 924-8304
 E-Mail johncan@stanford.edu

THE GAME: Back following a two-week break for final exams, No. 11 Stanford (6-1) hosts No. 3 Baylor (8-0) on Saturday, Dec. 15 at noon PT. Anne Marie Anderson, Mary Murphy and Jill Savage have the call on Pac-12 Networks and Kevin Danna will handle the radio broadcast on GoStanford.com.

THE RUNDOWN: Stanford is in the midst of a 14-game winning streak in Maples Pavilion, the 10th longest active stretch in the country ... The Cardinal is 12th in the country in scoring offense (85.0) and ninth nationally in field goal percentage (.490) ... Stanford is 8-1 in its last nine home games against top-5 teams ... The Cardinal is eighth in the country, averaging 10.8 3-point makes per game and 15th in 3-point percentage, making 39.1 percent ... Alanna Smith is the only player in the nation shooting better than 57 percent from the floor and 48 percent from behind the arc ... Lacie Hull earned the first start of her career on Dec. 2 at Gonzaga, is fifth in the conference, averaging 2.43 steals per game, and has 15 assists against just six turnovers (2.5 assist-to-turnover ratio) this season ... Stanford has three of the top five shooters from the floor in the Pac-12 this season in Maya Dodson (.595), Nadia Fingall (.592) and Alanna Smith (.577) ... Smith (Australia), Jenna Brown (United States) and Alyssa Jerome (Canada) all represented their countries in international competition this summer ... The nation's consensus No. 1 recruit, Haley Jones, announced her commitment to Stanford on Nov. 28, the first top player to sign with the Cardinal since Chiney Ogumike in Nov. 2009.

STANFORD AT A GLANCE

Game 8

Overall Record	6-1
Pac-12 Record	0-0
Home Record	3-0
Road Record	1-1
Neutral Record	2-0

HEAD COACH TARA VANDERVEER

Stanford Record (33rd year)	890-192
Career Record (40th year)	1,042-243
All-Time vs. Baylor	2-3

SERIES HISTORY

All-Time vs. Baylor	2-4
At Stanford	1-0
At Baylor	0-2
Neutral	1-2
Streak	Baylor, 1
Last Stanford Win	11/16/12 (71-69 @ HAWAII)
Last Baylor Win	12/3/17 (81-57 @ BAYLOR)

VS. BAYLOR: Stanford is 2-4 all-time against Baylor and 1-0 at Stanford, winning the only previous matchup on The Farm, 87-63, on Dec. 16, 2007 behind 35 points from Candice Wiggins and 22 from Kayla Pedersen. In the teams' last meeting, the Lady Bears beat Stanford in Waco on Dec. 3, 2017, 81-57. Kalani Brown scored 28 points on 12-of-16 shooting and the Cardinal managed to shoot just 29.4 percent (20-of-68), its worst clip in two seasons.

STANFORD PROBABLE STARTERS

No.	Player	Pos.	Ht.	Yr.	PPG	RPG	APG
4	Nadia Fingall	F	6-3	Jr.	10.1	5.3	2.1
11	Alanna Smith	F	6-4	Sr.	18.1	6.1	1.6 (BPG)
21	DiJonai Carrington	G	5-11	Jr.	9.9	4.9	2.1
23	Kiana Williams	G	5-8	So.	15.3	2.1	4.3
24	Lacie Hull	F	6-1	Fr.	4.0	2.4	2.4 (SPG)

STANFORD OFF THE BENCH

No.	Player	Pos.	Ht.	Yr.	PPG	RPG	APG
2	Shannon Coffee	C	6-5	Sr.	1.0	0.7	0.4
3	Anna Wilson	G	5-9	Jr.	3.7	2.5	1.2
10	Alyssa Jerome	F	6-3	So.	4.6	4.0	0.6
12	Lexie Hull	F	6-0	Fr.	10.7	7.0	2.7 (SPG)
13	Marta Sniezek	G	5-8	Sr.	--	--	--
14	Mikaela Brewer	G	5-10	Jr.	1.5	0.3	0.0
15	Maya Dodson	F	6-3	So.	7.9	3.7	1.9 (BPG)
20	Estella Moschkau	F	6-1	So.	1.8	0.2	0.3
22	Alexa Romano	G	5-10	Sr.	1.3	0.3	0.1
54	Jenna Brown	G	5-10	Fr.	2.7	1.6	1.1

QUICK FACTS

The University

Location Stanford, Calif.
 Founded..... 1891
 Enrollment..... 16,424 (7,056 undergraduate)
 Nickname..... Cardinal
 Colors..... Cardinal and White
 Affiliation NCAA Division I
 Conference Pac-12
 President Marc Tessier-Lavigne
 Provost..... Persis Drell
 Director of Athletics..... Bernard Muir
 Faculty Representative Jeff Koseff
 Senior Women's Administrator..... Beth Goode
 Athletic Department Phone 650-723-4591
 Ticket Office Phone 800-STANFORD
 Home Facility..... Maples Pavilion
 Capacity 7,233
 Web Site www.gostanford.com

Stanford Women's Basketball History

First Year 1974-75 (45 seasons)
 All-Time Record 1,066-330 (.764)
 All-Time Pac-12 (since 1986-87) 500-75 (.870)
 NCAA Championships 2 (1990, 1992)
 NCAA Tournament Appearances 32 (86-30)
 Last NCAA Tournament Appearance 2018
 NCAA Final Four Appearances 13
 Last NCAA Final Four Appearance 2017

Staff Information

Head Coach Tara VanDerveer (33rd season)
 Alma Mater Indiana, 1975
 Stanford Record 890-192/33 seasons
 Career Record..... 1,042-243/40 seasons
 Associate Head Coach..... Kate Paye (12th season)
 Alma Mater Stanford, 1995
 Assistant Coach Tempie Brown (sixth season)
 Alma Mater Michigan, 1990
 Assistant Coach Lindy La Rocque (second season)
 Alma Mater Stanford, 2012
 Operations Eileen Roche (Ohio Wesleyan '81)
 Administrator..... Amy Tucker (Ohio State, '82)
 Video Coordinator Hana Potter (Washington St. '14)
 Athletic Trainer Katelin Knox (Santa Clara '09)
 Sports Performance Brittany Keil (Holy Cross '07)
 Basketball Office Phone..... (650) 723-0284

Team Information

Letterwinners Returning/Lost12/2
 Starters Returning/Lost3/2
 Newcomers..... 3
 2017-18 Record.....24-11
 Home14-2
 Away6-5
 Neutral.....4-4
 2017-18 Conference Record14-3
 Finish 2nd

MORE BAYLOR »

- The first game between Baylor and Stanford came on Dec. 2, 1983 at UNLV, a 63-59 Lady Bears victory.
- The other five meetings have all been since 2007 and had at least one team ranked in the AP top-10.
- This the only game of the week between two top-25 teams in NCAA women's basketball.
- Saturday will be the highest rankings for both teams in the series since Nov. 16, 2012, when the No. 4 Cardinal beat No. 1 Baylor in Honolulu, 71-69, to snap the defending national champions' 42-game winning streak. Brittney Griner scored 18 of her 22 points in the second half and Chiney Ogwumike led the Cardinal with 18.
- That came seven months after No. 1 Baylor beat No. 2 Stanford, 59-47, at the Final Four in Denver. Nneka Ogwumike had 22 points and nine rebounds for Stanford while Griner had 13 and nine for Baylor and Destiny Williams had 10 rebounds.
- In last year's game in Waco, Shannon Coffee scored a career-high 14 points on 4-of-8 shooting from behind the arc and became the first player in the nation at least 6-foot-5 to hit four 3-pointers in a game since Delaware's Elena Delle Donne made the same number against Georgia State on March 6, 2013. Delle Donne made four or more 3-pointers 15 times in her career.

SETTING THE STAGE »

- Stanford started the season 6-0, its best since winning its first 11 games in 2012-13.
- The Cardinal's loss at Gonzaga on Dec. 2 was its third to a WCC team in the nonconference in the last four seasons. Gonzaga won at Stanford, 68-63, on Nov. 18, 2016 and Santa Clara beat the Cardinal in Maples on Nov. 23, 2015, 61-58.
- Gonzaga shot 54.2 percent from the floor (26-of-48) in its most recent victory, the best for a Stanford opponent since No. 22 DePaul made 59.6 percent (31-of-52) in a 91-71 win on Dec. 16, 2010.
- Saturday's matchup with is Stanford's first game following its annual two-week break for final exams. Since first taking a two-week break during the season for exams in 1999-2000, Stanford is 15-4 in its first game back from the hiatus.

SEASON SNAPSHOT »

- The Cardinal is 12th in the country in scoring offense (85.0) and 14th in scoring margin (+23.9).
- Stanford hasn't averaged more than 75.0 points per game since 2013-14 and has averaged 68.7 (2017-18), 68.8 (2015-16) and 69.3 (2014-15) in three of the last four years. Those are three of the five lowest scoring offenses for a Tara VanDerveer team at Stanford, behind 1985-86 (66.6) and 1986-87 (67.8).
- Stanford is ninth nationally in field goal percentage (.490), 10th in rebound margin (+12.4) and 11th in assist-to-turnover ratio (1.38). Those categories are just a few of many where the Cardinal has seen a marked improvement year-over-year. Last season, Stanford was 87th in field goal percentage (.424), 48th in rebound margin (+5.3) and 126th in assist-to-turnover ratio (0.93).
- Stanford returns 77 percent of its minutes played from 2017-18, the fourth most among top 25 programs at the end of last season according to Her Hoop Stats' overall rating, which takes strength of schedule into account.
- Arizona State returns 97 percent, Virginia Tech 91 percent and Louisville 82 percent. South Carolina also welcomes back 77 percent of its minutes played.
- The Cardinal made its 11th consecutive trip to the Sweet 16 last season, posting a 24-11 overall record and a 14-3 mark in Pac-12 play. Stanford won at least 20 games for the 17th straight season and 29th overall and had double-digit Pac-12 victories for the 31st consecutive year.

2018-19 STANFORD ROSTER

No.	Player	Pos.	Ht.	Yr.	Major	Hometown (High School)
2	Shannon Coffee	C	6-5	Sr.	Human Biology	Dayton, Ohio (Centerville)
3	Anna Wilson	G	5-9	Jr.	Art Practice	Seattle, Wash. (Bellevue)
4	Nadia Fingall	F	6-3	Jr.	Human Biology	Navarre, Fla. (Choctawhatchee)
10	Alyssa Jerome	F	6-3	So.	Undeclared	Toronto, Ontario, Canada (Harbord Collegiate)
11	Alanna Smith	F	6-4	Sr.	Psychology	Melbourne, Victoria, Australia (Wesley College)
12	Lexie Hull	F	6-0	Fr.	Undeclared	Spokane, Wash. (Central Valley)
13	Marta Sniezek	G	5-8	Sr.	American Studies	McLean, Va. (National Cathedral [D.C.])
14	Mikaela Brewer	G	5-10	Jr.	Human Biology	Barrie, Ontario, Canada (Innisdale Secondary)
15	Maya Dodson	F	6-3	So.	Undeclared	Alpharetta, Ga. (St. Francis)
20	Estella Moschkau	F	6-1	So.	Undeclared	Madison, Wis. (Edgewood)
21	DiJonai Carrington	G	5-11	Jr.	Psychology • African & African American Studies	San Diego, Calif. (Horizon Christian)
22	Alexa Romano	G	5-10	Sr.	Anthropology	Albuquerque, N.M. (La Cueva)
23	Kiana Williams	G	5-8	So.	Undeclared	San Antonio, Texas (Karen Wagner)
24	Lacie Hull	F	6-1	Fr.	Undeclared	Spokane, Wash. (Central Valley)
54	Jenna Brown	G	5-10	Fr.	Undeclared	Atlanta, Ga. (The Lovett School)

TEMPIE Brown (TEMP-ee)
DIJONAI Carrington (dijon-NAY)
 Nadia **FINGALL** (FING-gull)
 Estella **MOSCHKAU** (MOSS-cow)
ALANNA Smith (uh-LAN-uh)
 Marta **SNIEZEK** (SNEEZE-ick)
TARA VANDERVEER (TAR-uh van-DER-veer)

STANFORD'S RECORD WHEN

Category	H	R	N	O
Scoring First	2-0	1-1	1-0	4-1
Opponent Scores First	1-0	0-0	1-0	2-0
Lead at Half	3-0	1-0	2-0	6-0
Trail at Half	0-0	0-1	0-0	0-1
Tied at Half	0-0	0-0	0-0	0-0
Overtime	0-0	0-0	0-0	0-0
vs. Top 25	0-0	0-0	0-0	0-0
Decided by 1-4 Points	0-0	0-0	0-0	0-0
Decided by 5-9 Points	0-0	0-1	0-0	0-1
Decided by 10+ Points	3-0	1-0	2-0	6-0
Scoring 100+	1-0	0-0	0-0	1-0
Scoring 90-99	1-0	0-0	0-0	1-0
Scoring 80-89	0-0	1-0	1-0	2-0
Scoring 70-79	1-0	0-1	1-0	2-1
Scoring 60-69	0-0	0-0	0-0	0-0
Scoring 50-59	0-0	0-0	0-0	0-0
Scoring 40-49	0-0	0-0	0-0	0-0
Opp. Scoring 90-99	0-0	0-0	0-0	0-0
Opp. Scoring 80-89	0-0	0-0	0-0	0-0
Opp. Scoring 70-79	1-0	0-1	0-0	1-1
Opp. Scoring 60-69	1-0	0-0	1-0	2-0
Opp. Scoring 50-59	0-0	1-0	0-0	1-0
Opp. 49 or Fewer	1-0	0-0	1-0	2-0
50%-plus FG Pct.	2-0	1-0	1-0	4-0
40-49.9% FG Pct.	1-0	0-1	1-0	2-1
39.9%-minus FG Pct.	0-0	0-0	0-0	0-0
Opp. 50%-plus FG Pct.	0-0	0-1	0-0	0-1
Opp. 40-49.9% FG Pct.	1-0	1-0	0-0	2-0
Opp. 39.9%-minus	2-0	0-0	2-0	4-0
Better FG% than Opp.	3-0	1-0	2-0	6-0
FG% is Equal	0-0	0-0	0-0	0-0
Opp. Better FG%	0-0	0-1	0-0	0-1
80%-plus FT Pct.	0-0	0-0	0-0	0-0
70-79% FT Pct.	1-0	1-0	1-0	3-0
69%-minus FT Pct.	2-0	0-1	1-0	3-1
Better FT% than Opp.	2-0	0-0	0-0	2-0
FT% is Equal	0-0	0-0	0-0	0-0
Opp. Better FT%	1-0	1-1	2-0	4-1
Outrebounding Opp.	2-0	1-0	2-0	5-0
Rebounds are Equal	0-0	0-0	0-0	0-0
Outrebounded by Opp.	1-0	0-1	0-0	1-1
Fewer TO than Opp.	2-0	1-1	1-0	4-1
Turnovers are Equal	0-0	0-0	0-0	0-0
More TO than Opp.	1-0	0-0	1-0	2-0
6 in Double Figures	1-0	0-0	0-0	1-0
5 in Double Figures	0-0	0-0	0-0	0-0
4 in Double Figures	1-0	0-0	0-0	1-0
3 in Double Figures	1-0	0-1	2-0	3-1
2 in Double Figures	0-0	1-0	0-0	1-0
1 in Double Figures	0-0	0-0	0-0	0-0
Bench Scores More	1-0	1-0	1-0	3-0
Opp. Bench Scrs. More	1-0	0-1	1-0	2-1
Wearing Black	0-0	1-1	1-0	2-1
Wearing White	2-0	0-0	1-0	3-0
Wearing Cardinal	0-0	0-0	0-0	0-0

HOME COOKIN' »

- Stanford is in the midst of a 14-game winning streak in Maples Pavilion, the 10th longest active stretch in the country and the program's longest since it went 28 straight from Jan. 18, 2013 until an 87-81 overtime loss to No. 10 Texas on Nov. 20, 2014. Baylor is currently fourth with an active 26-game home winning streak.

AGAINST RANKED »

- Baylor will be the Cardinal's first ranked opponent of the season. Stanford is 8-1 in its last nine home games against top-5 teams.
- The Lady Bears are the first top-5 team to visit Maples in four seasons. The last was on Nov. 17, 2014, when Stanford ended No. 1 Connecticut's 47-game winning streak with an 88-86 overtime victory.
- The Cardinal was 4-9 against ranked teams last season and has won multiple games against top 25 opponents for each of the last 16 seasons.
- Stanford is 75-43 (.636) against AP ranked opponents since 2007-08, fifth in the country in such wins the past 12 years and fourth in percentage.
- Connecticut (.903), Baylor (.766), Notre Dame (.733), Stanford (.636), Tennessee (.611), Duke (.550) and Maryland (.534) are the only teams with winning records against ranked teams over that span.

SHARP SHOOTERS »

- Stanford is eighth in the country, averaging 10.8 3-point makes per game and 15th in 3-point percentage, making 39.1 percent.
- Stanford's 16 3-pointers on Nov. 11 against Idaho tied a program single-game record also achieved at UCLA on Feb. 24, 2002 and at Washington on Feb. 24, 2001.
- The Cardinal made 31.9 percent of its attempts from behind the arc last season, the second-worst percentage in program history. Stanford also was a program-low 42.4 percent overall in 2017-18.
- Stanford won that game against Idaho 115-71, its fifth-highest point total ever and most since tying a school record with 122 against Cal State Fullerton on Dec. 10, 1994.

OHIO STATE GAME CANCELED »

- The Cardinal's Nov. 18 home contest against Ohio State was canceled, as a significant increase in smoke from the devastating wildfires in Butte County had compromised the air quality throughout the Bay Area while causing the Air Quality Index (AQI) readings to reach, and occasionally exceed, the "Very Unhealthy" category.
- With no guarantee that conditions would improve and the Buckeyes' Nov. 16 game at Sacramento State already canceled, it was decided the game would not be played.

FOUR TO THE FARM »

- Stanford bolstered an already strong recruiting class for next season with the addition of the nation's consensus No. 1 recruit, Haley Jones (Santa Cruz, Calif./Archbishop Mitty), who committed on Nov. 28.
- Jones joined the earlier signings of top-50, five-star talents Fran Belibi (Aurora, Colo./Regis Jesuit), Hannah Jump (Los Altos Hills, Calif./Pinewood School) and Ashten Prechtel (Colorado Springs, Colo./Discovery Canyon) in Stanford's class, which is ranked second nationally by espnW HoopGurlz.
- Jones is the first No. 1 prospect to sign with Stanford since Chiney Ogwumike came to The Farm as the top player in the country in Nov. 2009. She is also the first woman to have her college commitment covered by ESPN and Sportscenter.

SO INTERNATIONAL »

- Alanna Smith, Jenna Brown and Alyssa Jerome all represented their countries across the globe in various tournaments this summer.
- Smith, the program's first international student, became the sixth Stanford player to appear in a FIBA World Cup in helping Australia to a silver medal in late September. The senior was one of two Stanford players at the tournament in Tenerife, Spain along with alumna Nneka Ogwumike (United States) and was a late arrival to campus for the fall quarter. Classes started on September 24.
- It was the 22-year-old's second go-around with her country's Senior Women's National Team. She made her debut and won silver at last summer's FIBA Asia Cup in Bangalore, India and was one of two Australian players to score in double figures for the tournament, averaging 10.8 points on 58.3 percent shooting and 5.3 rebounds.
- Brown and the USA Basketball U18 National Team won gold at the FIBA Americas U18 Championship in Mexico City in early August. The freshman averaged 7.5 points on 57.1 percent shooting, 2.8 assists and 2.3 rebounds in six games. She had her best performance in the semifinals against Colombia, going for a team-high 17 points on 6-of-7 shooting, including hitting three of her four 3-point attempts.
- In her first taste of FIBA competition two years ago, Brown took home bronze alongside current Cardinal Maya Dodson at the 2016 FIBA U17 World Cup in Zaragoza Spain.
- Jerome was the youngest player on Canada's Senior Women's National Team roster that participated in a four-game exhibition series in China and Japan from August 1-7.

VANDERVEER'S HEAD COACHING CAREER

Year	School	Overall	Post.
1978-79	Idaho	17-8	
1979-80	Idaho	25-6	AIAW Championships
1980-81	Ohio State	17-15	---
1981-82	Ohio State	20-7	NCAA First Round
1982-83	Ohio State	23-5	---
1983-84	Ohio State	22-7	NCAA First Round
1984-85	Ohio State	28-3	NCAA Elite 8
1985-86	Stanford	13-15	---
1986-87	Stanford	14-14	---
1987-88	Stanford	27-5	NCAA Sweet 16
1988-89	Stanford	28-3	NCAA Elite 8
1989-90	Stanford	32-1	NCAA Champions
1990-91	Stanford	26-6	NCAA Final Four
1991-92	Stanford	30-3	NCAA Champions
1992-93	Stanford	26-6	NCAA Sweet 16
1993-94	Stanford	25-6	NCAA Elite 8
1994-95	Stanford	30-3	NCAA Final Four
1995-96	Stanford	---	USA Head Coach
1996-97	Stanford	34-2	NCAA Final Four
1997-98	Stanford	21-6	NCAA First Round
1998-99	Stanford	18-12	NCAA First Round
1999-00	Stanford	21-9	NCAA Second Round
2000-01	Stanford	19-11	NCAA Second Round
2001-02	Stanford	32-3	NCAA Sweet 16
2002-03	Stanford	27-5	NCAA Second Round
2003-04	Stanford	27-7	NCAA Elite 8
2004-05	Stanford	32-3	NCAA Elite 8
2005-06	Stanford	26-8	NCAA Elite 8
2006-07	Stanford	29-5	NCAA Second Round
2007-08	Stanford	35-4	NCAA Runner-Up
2008-09	Stanford	33-5	NCAA Final Four
2009-10	Stanford	36-2	NCAA Runner-Up
2010-11	Stanford	33-3	NCAA Final Four
2011-12	Stanford	35-2	NCAA Final Four
2012-13	Stanford	33-3	NCAA Sweet 16
2013-14	Stanford	33-4	NCAA Final Four
2014-15	Stanford	26-10	NCAA Sweet 16
2015-16	Stanford	27-8	NCAA Elite 8
2016-17	Stanford	32-6	NCAA Final Four
2017-18	Stanford	24-11	NCAA Sweet 16
2018-19	Stanford	6-1	

1,042-243

COACHING HIGHLIGHTS

- The second-winningest coach in women's college basketball history and was the second to reach 1,000 career wins (Feb. 3, 2017 vs. USC).
- Possesses the sixth-highest career winning percentage (.811) among Division I women's basketball coaches all-time.

HONORS AND AWARDS

- Naismith Memorial Basketball Hall of Fame ('11)
- Women's Basketball Hall of Fame ('02)
- Two NCAA Championships (1990, 1992)
- Head of the 1996 U.S. Olympic Team (Gold)
- 60-0 record with USA Olympic Team in 1995-96
- 88-8 record (.917) as USA Basketball Head Coach
- 12 NCAA Final Fours
- 22 regular-season Pac-12 titles
- Four-time National Coach of the Year
- 15-time Pac-12 Coach of the Year
- Two-time Big Ten Coach of the Year

SUMMERS OFF THE FLOOR »

- Senior center Shannon Coffee spent her summer interning with the Stanford Center for Clinical Research, working on a study to address growing concerns over concussions in sports through research and data collection.
- The project involved mouthguards developed by engineers at Stanford with the ability to track impact, force and more in collisions between high school football players.
- Senior guard Alexa Romano was in Peru all summer as part of an archaeological excavation and research team led by Stanford professor Dr. John Rick at a UNESCO World Heritage Site in the Andes.
- It was Romano's second academically-oriented international trip with Stanford. Two summers ago she spent three weeks in India as part of The Rubenstein-Bing Student-Athlete Civic Engagement Program, serving as a coaching assistant for sports activities, taught English as a second language courses and promoted computer literacy initiatives for youth at a community center in Dakshinipuri, New Delhi.

FROM DOWN UNDER »

- Alanna Smith is on a laundry of preseason watch lists, including the Naismith Trophy, Wade Trophy, John R. Wooden Award, Katrina McClain Award and Senior CLASS Award and also was selected to the preseason All-Pac-12 Team as voted on by the media who regularly cover the conference.
- An All-Pac-12 performer as a junior, this season Smith is shooting 57.7 percent from the field (45-of-78), 48.5 percent from behind the arc (16-of-33) and averaging a team-high 18.1 points per game to go with 6.1 rebounds.
- She is the only player in the nation shooting better than 57 percent from the floor and 48 percent from deep using NCAA minimums of five made field goals per game and two made 3-pointers per game.
- Smith is second in the conference and 31st in the country in field goal percentage, fifth in the Pac-12 and 27th in the country in 3-point percentage, seventh in the league in scoring and leads the nation's 6-foot-4 players in 3-point percentage and 3-pointers made.
- She is 35th in school history in scoring (1,131) and seventh in blocks (158).
- In the Cardinal's win over San Francisco on Nov. 15, Smith had 18 points, seven rebounds, three assists, four blocks and made 3-pointers. She is the eighth player with those numbers in a single game in the past 20 years and the only one to do it in less than 30 minutes (26).

WATCH WILLIAMS »

- Kiana Williams is also on a handful of watch lists for the Naismith Trophy, John R. Wooden Award and Ann Meyers Drysdale Award.
- The sophomore is second on the team in scoring (15.3 points per game) and makes an average of 2.86 3-pointers per outing, good for fourth in the league. Her 71 made triples a year ago are the second most for a Stanford freshman in program history. Williams' 46.5 3-point percentage this season is 36th in the country.
- Williams had a standout freshman campaign in 2017-18, was named All-Pac-12 honorable mention and also landed on the Pac-12 All-Freshman and Pac-12 All-Tournament teams. Twenty-six players were voted either All-Pac-12 or all-conference honorable mention last season and Stanford's dynamic playmaker was the only freshman among them.

VANDERVEER'S CAREER MILESTONES

Win #1	Dec. 1, 1978 Idaho vs. Northern Montana, 70-68	Win #1 at Stanford	Nov. 22, 1985 vs. Hawaii, 68-65
Win #100	Feb. 27, 1983 Ohio State vs. Michigan, 74-60	Win #100 at Stanford	Jan. 27, 1990 vs. Arizona State, 90-63
Win #200	Feb. 12, 1988 Stanford vs. Washington, 70-66	Win #200 at Stanford	Dec. 18, 1993 vs. SW Missouri St., 74-63
Win #300	Dec. 20, 1991 Stanford vs. Southern Illinois, 82-63	Win #300 at Stanford	Feb. 14, 1998 vs. USC, 91-63
Win #400	March 16, 1995 Stanford vs. UC Irvine (NCAA), 88-55	Win #400 at Stanford	Nov. 30, 2002 vs. Kansas State, 63-57
Win #500	Nov. 26, 2000 Stanford vs. Pacific, 73-65	Win #500 at Stanford	Feb. 11, 2006 at California, 55-46
Win #600	March 20, 2004 Stanford vs. Missouri, 68-44	Win #600 at Stanford	March 14, 2009 vs. UCLA, 73-47 (at Los Angeles, Calif.)
Win #700	Dec. 28, 2007 Stanford vs. Washington State, 105-47	Win #700 at Stanford	Feb. 25, 2012 vs. Utah, 69-42
Win #800	Dec. 22, 2010 Stanford at San Francisco, 100-45	Win #800 at Stanford	March 21, 2015 vs. CSUN, 73-60
Win #900	Nov. 27, 2013 Stanford vs. FGCU, 83-59 (Puerto Vallarta, Mexico)		
Win #1,000	Feb. 3, 2017 Stanford vs. USC, 58-42		

IN THE POLLS

ASSOCIATED PRESS TOP 25
(Released December 10)

School	Record	Points
1 Connecticut (31)	9-0	775
2 Notre Dame	8-1	736
3 <i>Baylor</i>	7-0	705
4 Louisville	10-0	685
5 Mississippi State	9-0	654
6 Maryland	9-0	605
7 <i>Oregon</i>	7-1	576
8 <i>Oregon State</i>	7-1	555
9 Tennessee	8-0	545
10 North Carolina State	10-0	486
11 Stanford	6-1	464
12 Texas	7-2	389
13 <i>California</i>	8-0	374
13 Minnesota	9-0	374
15 Syracuse	8-2	336
16 Iowa	7-2	299
17 <i>Arizona State</i>	7-2	226
18 Kentucky	9-1	196
19 Marquette	7-2	184
20 DePaul	7-3	182
21 <i>Gonzaga</i>	9-1	142
22 Missouri	8-2	122
23 Michigan State	8-1	121
24 Miami (FL)	8-2	82
25 South Carolina	5-4	77

OTHERS RECEIVING VOTES: Drake 39; Texas A&M 24; Florida State 22; Virginia Tech 21; South Florida 16; Iowa State 14; Indiana 12; Georgia 11; South Dakota 10; West Virginia 5; Utah 5; USC 3; North Carolina 1; South Dakota State 1; Central Michigan 1.

USA TODAY COACHES TOP 25
(Released December 11)

School	Record	Points
1 Connecticut (32)	9-0	800
2 Notre Dame	8-1	754
3 Louisville	10-0	728
4 <i>Baylor</i>	7-0	701
5 Mississippi State	9-0	679
6 Maryland	10-0	631
7 <i>Oregon</i>	7-1	589
8 <i>Oregon State</i>	7-1	575
9 Tennessee	8-0	566
10 North Carolina State	10-0	520
11 Stanford	6-1	457
12 Texas	7-2	407
13 <i>California</i>	8-0	371
14 Syracuse	8-2	337
15 Iowa	7-2	284
16 Minnesota	9-0	276
16 Marquette	7-2	276
18 DePaul	7-3	232
19 <i>Arizona State</i>	7-2	226
20 Kentucky	9-1	216
21 <i>Gonzaga</i>	9-1	158
22 Michigan State	8-1	92
22 Miami (FL)	8-2	92
24 Missouri	8-2	81
25 Drake	8-2	59

OTHERS RECEIVING VOTES: USC 53; South Carolina 46; Florida State 44; South Florida 30; Virginia Tech 29; Texas A&M 23; UAB 12; South Dakota 12; South Alabama 10; Kansas 9; Iowa State 7; Indiana 6; South Dakota State 3; West Virginia 3; UCF 2; Michigan 2; New Mexico 2.

INCREASED CONTRIBUTIONS »

- Six-foot-3 posts Nadia Fingall and Maya Dodson have played major roles in Stanford's 6-1 start.
- A junior, Fingall has started each game and is averaging 10.1 points and 5.3 rebounds. She's shooting 59.2 percent from the field (29-of-49) and dropped in a career-high 24 points on 11-of-14 shooting in Stanford's 88-65 win against FGCU in Hawaii on Nov. 23 to go along with another personal best five assists. Fingall averaged 3.3 points on 44.6 percent shooting and 3.1 rebounds a year ago.
- Dodson similarly has upped her game as a sophomore and is scoring 7.9 points on 59.5 percent shooting from the floor and leads the conference in blocks per game (1.86). As a freshman, Dodson scored 3.5 points per game on 49.5 percent shooting.
- Dodson (.595) and Fingall (.592) are third and fourth in the league in field goal percentage, just ahead of Alanna Smith (.577) according to the Pac-12's stats, which have different minimums than the NCAA.

TWIN TREES »

- Sisters Lexie (25.7 minutes per game) and Lacie Hull (23.1 minutes per game) have played big roles in the early going and are Stanford's second and third most utilized players in terms of minutes played.
- Lexie, who has missed the past four games with a left foot injury, started the season's first three games and averaged 10.7 points, 7.0 rebounds and 2.7 steals. She had an 11-point, 11-rebound double-double in the season opener against UC Davis and is believed to be the first freshman in Stanford history to record a double-double in her debut.
- Lacie finished off the team's Rainbow Wahine Showdown with a pair of strong performances. Her seven steals on Nov. 24 against American were the most for a Stanford player since Candice Wiggins had the same number in a win over Old Dominion on Nov. 24, 2007.
- She followed that up with eight points, six assists and two blocks on Nov. 25 against Hawaii and scored nine points in her first career start at Gonzaga on Dec. 2.
- Lacie is fifth in the conference, averaging 2.43 steals per game, and has 15 assists against just six turnovers (2.5 assist-to-turnover ratio). Candice Wiggins is the only Stanford player to average 2.0 steals per game in a season over the past 20 years. She did it three times: 2004-05 (2.43), 2007-08 (2.15) and 2005-06 (2.00).

STANFORD BY THE NUMBERS

DOUBLE-DOUBLES	2018-19	CAREER	LED IN REBOUNDING (+TIES)	2018-19	CAREER
Alanna Smith	0	10	Alanna Smith	4	21
DiJonai Carrington	0	2	DiJonai Carrington	1	9
Lexie Hull	1	1	Nadia Fingall	2	7
			Marta Sniezek	0	4
			Lexie Hull	1	1
			Kiana Williams	0	1
DOUBLE-FIGURE POINTS	2018-19	CAREER	LED IN ASSISTS (+TIES)	2018-19	CAREER
Alanna Smith	6	51	Marta Sniezek	0	61
Kiana Williams	5	24	Kiana Williams	4	10
DiJonai Carrington	4	17	DiJonai Carrington	1	6
Nadia Fingall	3	14	Kaylee Johnson	0	3
Marta Sniezek	0	9	Nadia Fingall	1	3
Alexa Romano	0	3	Maya Dodson	1	1
Anna Wilson	1	4	Lacie Hull	1	1
Shannon Coffee	0	2	Alyssa Jerome	0	1
Maya Dodson	3	5	Alanna Smith	0	1
Lexie Hull	2	2	Anna Wilson	0	1
20-PLUS POINTS GAMES	2018-19	CAREER	STANFORD SUPERLATIVES		
Alanna Smith	2	11	Points	33, A. Smith at Hawaii	
Kiana Williams	1	4	Field Goals Made	12, A. Smith at Hawaii	
DiJonai Carrington	0	2	Field Goal Att.	18, A. Smith vs. American	
Nadia Fingall	1	1	3-Point FG Made	5, K. Williams vs. FGCU	
Anna Wilson	0	1		5, A. Smith vs. San Francisco	
				5, Lexie Hull vs. Idaho	
			3-Point FG Att.....	10, Lexie Hull vs. Idaho	
			Free Throws Made	12, D. Carrington vs. FGCU	
			Free Throw Att.	15, D. Carrington vs. FGCU	
			Rebounds.....	11, Lexie Hull vs. UC Davis	
			Assists	9, K. Williams vs. Idaho	
			Steals	7, Lacie Hull vs. American	
			Blocked Shots.....	4, M. Dodson vs. San Francisco	
				4, A. Smith vs. San Francisco	
LED TEAM IN SCORING (+TIES)	2018-19	CAREER			
Alanna Smith	4	24			
Kiana Williams	3	11			
DiJonai Carrington	0	5			
Shannon Coffee	0	2			
Nadia Fingall	1	1			
Alexa Romano	0	1			

THE LAST TIME STANFORD

BEAT A NO. 1 TEAM:

11/17/14 vs. No. 1 Connecticut (88-86 [OT])

BEAT A TOP 25 TEAM:

2/4/18 at No. 6 Oregon (78-65)

BEAT A TOP 5 TEAM:

3/26/17 vs. No. 2 Notre Dame (76-75)

BEAT A TOP 25 TEAM ON THE ROAD:

2/4/18 at No. 6 Oregon (78-65)

SCORED 100+ POINTS:

11/11/18 vs. Idaho (115)

ALLOWED 100+ POINTS:

12/27/00 at Oklahoma (102)

SCORED FEWER THAN 50 POINTS:

3/5/17 vs. Oregon State (48)

ALLOWED FEWER THAN 50 POINTS:

11/24/18 vs. American (49)

SCORED FEWER THAN 40 POINTS:

1/24/16 at UCLA (36)

ALLOWED FEWER THAN 40 POINTS:

12/16/17 vs. UNLV (33)

SHOT 60+ PERCENT:

11/25/16 vs. Wichita State (.623)

OPPONENT SHOT 59+ PERCENT:

12/16/10 at DePaul (.596)

SHOT LESS THAN 30 PERCENT:

12/3/17 at Baylor (.294)

OPPONENT SHOT LESS THAN 30 PERCENT:

11/7/18 vs. UC Davis (.226)

FIVE CARDINAL IN DOUBLE-FIGURES:

11/11/18 vs. Idaho
(A. Smith 19, K. Williams 19, Lexie Hull 17,
N. Fingall 16, M. Dodson 10, A. Wilson 10)

TWO PLAYERS WITH 20+ POINTS:

3/17/18 vs. Gonzaga
(K. Williams 21, A. Smith 20)

THREE PLAYERS WITH 20+ POINTS:

1/23/15 at UCLA,
(B. Roberson 21, B. Samuelson 21, A. Orrange 20)

PLAYER SCORED 40+ POINTS:

12/20/11, Nnemkadi Ogumike vs. Tennessee (42)

PLAYER SCORED 30+ POINTS:

11/25/18, Alanna Smith at Hawaii (30)

PLAYER MADE 10+ FIELD GOALS:

11/25/18, Alanna Smith at Hawaii (12)

PLAYER MADE 5+ 3-POINTERS:

11/23/18, Kiana Williams vs. FGCU (5)

PLAYER MADE 10+ FREE THROWS:

11/23/18, DiJonai Carrington vs. FGCU (12)

PLAYER HAD 10+ ASSISTS:

11/11/16, Marta Sniezek vs. Cal Poly (10)

PLAYER HAD 15+ REBOUNDS:

1/12/18, Kaylee Johnson vs. Washington State (15)

PLAYER HAD 5+ BLOCKED SHOTS:

2/17/18, Kaylee Johnson at California (6)

PLAYER HAD 5+ STEALS:

11/24/18, Lacie Hull vs. American (7)

PLAYER HAD A DOUBLE-DOUBLE:

11/7/18, Lexie Hull vs. UC Davis (11 pts, 11 reb)

TWO PLAYERS HAD A DOUBLE-DOUBLE:

3/31/17, Erica McCall (14 pts, 14 reb)
and Alanna Smith (14 pts, 12 reb) vs. South Carolina

PLAYER HAD A TRIPLE-DOUBLE:

3/18/02, N. Powell vs. Tulane (16 pts, 10 reb, 10 ast)

STANFORD HIGHS/LOWS

Most Points	115 vs. Idaho (11/11/18)
Fewest Points	71, two times [last vs. American (11/24/18)]
Most 1st Quarter Points.....	28 vs. Idaho (11/11/18)
Fewest 1st Quarter Points.....	15 at Hawaii (11/25/18)
Most 2nd Quarter Points.....	28 vs. Idaho (11/11/18)
Fewest 2nd Quarter Points	13 vs. American (11/24/18)
Most 3rd Quarter Points	40 vs. Idaho (11/11/18)
Fewest 3rd Quarter Points	9 at Gonzaga (12/2/18)
Most 4th Quarter Points	32 at Gonzaga (12/2/18)
Fewest 4th Quarter Points	14 vs. UC Davis (11/7/18)
Best FG Pct.....	56.6% (30-of-53) at Hawaii (11/25/18)
Worst FG Pct.....	41.9% (26-of-62) vs. American (11/24/18)
Most 3-Pt. FGs Made.....	16 vs. Idaho (11/11/18)
Fewest 3-Pt. FGs Made	6 vs. UC Davis (11/7/18)
Most 3-Pt. FGs Attempted	41 vs. Idaho (11/11/18)
Fewest 3-Pt. FGs Attempted.....	21 at Hawaii (11/25/18)
Best 3-Pt. FG Pct. (min. five attempts).....	50.0% (11-of-22) vs. FGCU (11/23/18)
Worst 3-Pt. FG Pct.....	25.0% (6-of-24) vs. UC Davis (11/7/18)
Most Free Throws Made	17 vs. FGCU (11/23/18)
Fewest Free Throws Made.....	9, two times [last vs. San Francisco (11/15/18)]
Most Free Throws Attempted.....	26 vs. FGCU (11/23/18)
Fewest Free Throws Attempted	13 vs. Idaho (11/11/18)
Best Free Throw Pct. (min. five attempts)	76.5% (13-of-17) at Hawaii (11/25/18)
Worst Free Throw Pct.	58.3% (14-of-24) at Gonzaga (12/2/18)
Most Rebounds.....	50 vs. UC Davis (11/7/18)
Fewest Rebounds	24 at Gonzaga (12/2/18)
Best Rebound Margin.....	+29 vs. Idaho (11/11/18)
Worst Rebound Margin.....	-14 at Gonzaga (12/2/18)
Most Assists	26 vs. Idaho (11/11/18)
Fewest Assists.....	10 vs. UC Davis (11/7/18)
Most Turnovers.....	21 vs. UC Davis (11/7/18)
Fewest Turnovers	9 vs. San Francisco (11/15/18)
Best Turnover Margin.....	+8 at Gonzaga (12/2/18)
Worst Turnover Margin.....	-4 vs. FGCU (11/23/18)
Most Blocked Shots	11 vs. San Francisco (11/15/18)
Fewest Blocked Shots	1 vs. FGCU (11/23/18)
Most Steals.....	13 at Hawaii (11/25/18)
Fewest Steals	4 vs. San Francisco (11/15/18)

OPPONENT HIGHS/LOWS

Most Points	79 by Gonzaga (12/2/18)
Fewest Points	43 by UC Davis (11/7/18)
Most 1st Quarter Points.....	22 by Gonzaga (12/2/18)
Fewest 1st Quarter Points.....	8 by Hawaii (11/25/18)
Most 2nd Quarter Points	22 by FGCU (11/23/18)
Fewest 2nd Quarter Points	10 vs. UC Davis (11/7/18)
Most 3rd Quarter Points	24 by Hawaii (11/25/18)
Fewest 3rd Quarter Points	10 vs. UC Davis (11/7/18)
Most 4th Quarter Points	21 by Gonzaga (12/2/18)
Fewest 4th Quarter Points	9 vs. UC Davis (11/7/18)
Best FG Pct.....	54.2% (26-of-48) by Gonzaga (12/2/18)
Worst FG Pct.....	22.6% (14-of-62) by UC Davis (11/7/18)
Most 3-Pt. FGs Made.....	15 by Idaho (11/11/18)
Fewest 3-Pt. FGs Made	3 by American (11/24/18)
Most 3-Pt. FGs Attempted	38 by FGCU (11/23/18)
Fewest 3-Pt. FGs Attempted.....	12 by American (11/24/18)
Most FTs Made	19 by Gonzaga (12/2/18)
Fewest FTs Made	2 by Hawaii (11/25/18)
Most FTs Attempted.....	23 by San Francisco (11/15/18)
Fewest FTs Attempted	2 by Hawaii (11/25/18)
Most Rebounds	39 by San Francisco (11/15/18)
Fewest Rebounds	20, two times [last by FGCU (11/23/18)]
Most Assists	17 by Hawaii (11/25/18)
Fewest Assists.....	6 by UC Davis (11/7/18)
Most Turnovers.....	23 by Gonzaga (12/2/18)
Fewest Turnovers	12 by FGCU (11/23/18)
Best Turnover Margin.....	+4 by FGCU (11/23/18)
Worst Turnover Margin.....	-8 by Gonzaga (12/2/18)
Most Blocked Shots.....	3, two times [last by Gonzaga (12/2/18)]
Fewest Blocked Shots	0, two times [last by FGCU (11/23/18)]
Most Steals.....	13 by UC Davis (11/7/18)
Fewest Steals	3 by American (11/24/18)

STANFORD RECORDS

CAREER SCORING

No.	Player	PTS
1.	Chiney Ogwumike (2011-14)	2,737
2.	Candice Wiggins (2005-08)	2,629
3.	Nnemkadi Ogwumike (2009-12)	2,491
4.	Kate Starbird (1994-97)	2,215
5.	Jayne Appel (2007-10)	2,125
6.	Val Whiting (1990-93)	2,077
7.	Nicole Powell (2001-04)	2,062
8.	Jeanne Ruark Hoff (1979-83)	2,038
9.	Kayla Pedersen (2008-11)	1,941
10.	Trisha Stevens (1988-91)	1,649
11.	Jennifer Azzi (1987-90)	1,634
12.	Katy Steding (1987-90)	1,586
13.	Olympia Scott (1995-98)	1,524
14.	Brooke Smith (2005-07)	1,520
15.	Anita Kaplan (1992-95)	1,509
16.	Lindsey Yamasaki (1999-2002)	1,497
17.	Jeanette Pohlen (2008-11)	1,453
18.	Virginia Sourlis (1983-86)	1,449
19.	Sonja Henning (1988-91)	1,445
20.	Amber Orrange (2012-15)	1,426
21.	Louise Smith (1979-82)	1,414
22.	Christy Hedgpeth (1991-94)	1,387
23.	Erica McCall (2014-17)	1,376
24.	Kelley Suminski (2002-05)	1,364
25.	Meg Metzger (1980-83)	1,360
26.	Rachel Hemmer (1992-95)	1,289
27.	Vanessa Nygaard (1994-98)	1,279
28.	Julie Zeilstra (1989-91)	1,259
29.	Brittany McPhee (2015-18)	1,250
	Lili Thompson (2014-16)	1,250
31.	Maggie Nelson (1975-78)	1,180
32.	Karlie Samuelson (2014-17)	1,164
33.	Kami Anderson (1985-88)	1,141
34.	Jill Yanke (1986-89)	1,134
35.	ALANNA SMITH (2016-19)	1,131
35.	Jillian Harmon (2006-09)	1,096
36.	Joslyn Tinkle (2010-13)	1,091
37.	Molly Goodenbour (1990-93)	1,040
38.	Angie Paccione (1979-83)	1,013
39.	Bethany Donaphin (1999-02)	1,010

CAREER BLOCKS

No.	Player	BLKS
1.	Jayne Appel (2007-10)	273
2.	Chiney Ogwumike (2011-14)	202
3.	Val Whiting (1990-93)	201
4.	Erica McCall (2014-17)	200
5.	Kaylee Johnson (2015-18)	166
6.	Kristen Newlin (2004-07)	163
7.	ALANNA SMITH (2016-19)	158
8.	Joslyn Tinkle (2010-13)	150
9.	Bethany Donaphin (1999-2002)	136
	Cori Enghusen (1999-2002)	136

CAREER ASSISTS

No.	Player	ASTS
1.	Sonja Henning (1988-91)	757
2.	Jennifer Azzi (1987-90)	751
3.	Milena Flores (1997-2000)	644
4.	Jamila Wideman (1994-97)	585
5.	Nicole Powell (2001-04)	577
6.	Jeanette Pohlen (2008-11)	560
7.	Amber Orrange (2012-15)	552
8.	Virginia Sourlis (1983-86)	483
9.	Molly Goodenbour (1990-93)	441
10.	Kate Starbird (1994-97)	437
11.	Candice Wiggins (2005-08)	436
	MARTA SNIJEK (2016-19)	428

SINGLE-GAME STEALS

No.	Player	STLS
1.	Katy Steding at Northwestern (12/3/88)	10
2.	Milena Flores vs. Saint Mary's (12/27/99)	9
3.	Jennifer Azzi vs. North Carolina State (12/19/87)	8
4.	LACIE HULL VS. AMERICAN (11/24/18)	7
	Candice Wiggins vs. Old Dominion (11/24/07)	7
	Brooke Smith at Washington State (1/13/07)	7
	Jamila Wideman at Colorado (12/28/96)	7
	Katy Steding at UCLA (1/7/89)	7
	Jennifer Azzi at Fresno State (12/1/87)	7

TEAM SINGLE-GAME SCORING

No.	Opponent	PTS
1.	vs. Cal State Fullerton (12/10/94)	122
	vs. Long Beach State (12/8/93)	122
3.	vs. Wisconsin (11/25/88)	119
4.	vs. Arizona (2/23/91)	116
5.	VS. IDAHO (11/11/18)	115
6.	vs. Arkansas (3/24/90)	114
7.	vs. Arizona State (1/13/94)	113
	vs. California (2/1/91)	113
	at Arizona (2/24/90)	113
	vs. Ohio (11/25/89)	113

TEAM SINGLE-GAME FIELD GOALS

No.	Opponent	FGM
1.	vs. Cal State Fullerton (12/10/94)	51
2.	at Arizona (2/24/90)	47
3.	vs. Long Beach State (12/8/93)	46
4.	VS. IDAHO (11/11/18)	45
	vs. California (2/18/94)	45
	vs. Arkansas (3/24/90)	45
	vs. California (3/2/90)	45
	vs. Oregon (2/25/89)	45
9.	vs. Arizona (3/11/11)	44
	vs. Providence (12/28/94)	44
	vs. Illinois State (3/18/89)	44
	vs. Wisconsin (11/25/88)	44

TEAM SINGLE-GAME 3-POINTERS

No.	Opponent	3FGM
1.	VS. IDAHO (11/11/18)	16
	at UCLA (2/24/02)	16
	at Washington (2/24/01)	16
4.	VS. SAN FRANCISCO (11/15/18)	15
	at San Francisco (11/29/17)	15
	vs. Missouri State (11/27/15)	15
	at Arizona (1/17/14)	15
	vs. UCLA (1/20/05)	15
	vs. Washington State (1/31/04)	15
	vs. Arizona (1/10/04)	15

2018-19 Results

RECORD:	OVERALL	HOME	AWAY	NEUTRAL
ALL GAMES	6-1	3-0	1-1	2-0
CONFERENCE	0-0	0-0	0-0	0-0
NON-CONFERENCE	6-1	3-0	1-1	2-0

DATE	TIME	OPPONENT		SCORE	ATTEND	HIGH POINTS	HIGH REBOUNDS
11/7/18	7:00 p.m.	UC DAVIS	W	71-43	2471	(16) Smith, Alanna	(11) Hull, Lexie
11/11/18	2:00 p.m.	IDAHO	W	115-71	2582	(19) Williams, Kiana (19) Smith, Alanna	(9) Smith, Alanna
11/15/18	7:00 p.m.	SAN FRANCISCO	W	96-62	2077	(21) Williams, Kiana	(7) Smith, Alanna
11/23/18	4:30 p.m.	# vs. FGCU	W	88-65	1346	(24) Fingall, Nadia	(9) Carrington, DiJonai
11/24/18	12:00 p.m.	# vs. American	W	71-49	1268	(25) Smith, Alanna	(8) Smith, Alanna
11/25/18	2:30 p.m.	# at Hawaii	W	81-59	1383	(30) Smith, Alanna	(6) Fingall, Nadia
12/2/18	2:00 p.m.	at Gonzaga		73-79 L	6,000	(18) Williams, Kiana	(7) Smith, Alanna

* = Pac-12

= Rainbow Wahine Showdown; Honolulu, Hawaii

ATTENDANCE	GAMES	TOTALS	AVG/GAME
HOME	3	7130	2377
AWAY	2	7383	3692
NEUTRAL	2	2614	1307
TOTAL	7	17127	2447

2018-19 Game-by-Game Comparison

	Date	Score	W/L	---TOTAL---		--3-PTRS--		FT-FTA Pct		----REBOUNDS----				PF	A	TO	Blk	Stl	Pts	Avg
				FG-FGA	Pct	3FG-FGA	Pct		Pct	Off	Def	Tot	Avg							
UC Davis	11/7	71-43	W	14-62	.226	8-31	.258	7-13	.538	6	19	25	25.0	17	6	18	3	13	43	43.0
Stanford				26-61	.426	6-24	.250	13-18	.722	12	38	50	50.0	18	10	21	6	12	71	71.0
Idaho	11/11	115-71	W	25-59	.424	15-24	.625	6-13	.462	2	18	20	22.5	20	14	16	2	4	71	57.0
Stanford				45-84	.536	16-41	.390	9-13	.692	20	29	49	49.5	19	26	10	7	8	115	93.0
San Francisco	11/15	96-62	W	20-60	.333	5-16	.313	17-23	.739	13	26	39	28.0	18	8	14	0	4	62	58.7
Stanford				36-70	.514	15-32	.469	9-15	.600	9	25	34	44.3	19	24	9	11	4	96	94.0
FGCU	11/23	88-65	W	23-63	.365	10-38	.263	9-11	.818	3	17	20	26.0	19	9	12	0	8	65	60.2
Stanford				30-58	.517	11-22	.500	17-26	.654	12	35	47	45.0	14	22	16	1	7	88	92.5
American	11/24	71-49	W	17-46	.370	3-12	.250	12-15	.800	4	21	25	25.8	19	10	16	1	3	49	58.0
Stanford				26-62	.419	7-22	.318	12-17	.706	15	25	40	44.0	16	18	12	2	12	71	88.2
Hawaii	11/25	81-59	W	22-54	.407	13-22	.591	2-2	1.000	6	16	22	25.2	19	17	19	1	6	59	58.2
Stanford				30-53	.566	8-21	.381	13-17	.765	8	24	32	42.0	11	18	13	5	13	81	87.0
Gonzaga	12/2	73-79	L	26-48	.542	8-13	.615	19-22	.864	10	28	38	27.0	16	14	23	3	9	79	61.1
Stanford				25-57	.439	9-22	.409	14-24	.583	9	15	24	39.4	18	14	15	6	12	73	85.0

**2018-19 Stanford Women's Basketball
Stanford Combined Team Statistics (as of Dec 02, 2018)
All games**

RECORD:	OVERALL	HOME	AWAY	NEUTRAL
ALL GAMES	6-1	3-0	1-1	2-0
CONFERENCE	0-0	0-0	0-0	0-0
NON-CONFERENCE	6-1	3-0	1-1	2-0

#	Player	gp-gs	min	avg	Total		3-Point		F-Throw		Rebounds				pf	dq	a	to	blk	stl	pts	avg
					fg-fga	fg%	3fg-fga	3fg%	ft-fga	ft%	off	def	tot	avg								
11	Smith, Alanna	7-7	158	22.6	45-78	.577	16-33	.485	21-27	.778	12	31	43	6.1	17	1	18	20	11	10	127	18.1
23	Williams, Kiana	7-7	215	30.7	40-79	.506	20-43	.465	7-10	.700	0	15	15	2.1	6	0	30	18	0	5	107	15.3
12	Hull, Lexie	3-3	77	25.7	12-27	.444	6-15	.400	2-2	1.000	9	12	21	7.0	8	0	3	4	3	8	32	10.7
04	Fingall, Nadia	7-7	152	21.7	29-49	.592	5-12	.417	8-15	.533	18	19	37	5.3	15	0	15	10	3	5	71	10.1
21	Carrington, DiJonai	7-7	142	20.3	23-52	.442	5-17	.294	18-26	.692	7	27	34	4.9	10	0	15	10	0	11	69	9.9
15	Dodson, Maya	7-0	138	19.7	25-42	.595	0-0	.000	5-15	.333	14	12	26	3.7	13	0	11	6	13	3	55	7.9
10	Jerome, Alyssa	7-0	100	14.3	9-25	.360	3-8	.375	11-15	.733	7	21	28	4.0	11	0	4	5	3	1	32	4.6
24	Hull, Lacie	7-1	162	23.1	9-25	.360	6-15	.400	4-4	1.000	4	13	17	2.4	11	0	15	6	3	17	28	4.0
03	Wilson, Anna	6-3	74	12.3	7-23	.304	4-18	.222	4-4	1.000	3	12	15	2.5	11	0	7	2	0	6	22	3.7
54	Brown, Jenna	7-0	78	11.1	7-19	.368	1-7	.143	4-9	.444	0	11	11	1.6	5	0	8	5	0	0	19	2.7
20	Moschkau, Estella	6-0	25	4.2	4-4	1.000	3-3	1.000	0-0	.000	1	0	1	0.2	1	0	2	5	0	2	11	1.8
14	Brewer, Mikaela	4-0	12	3.0	2-4	.500	0-2	.000	2-2	1.000	0	1	1	0.3	1	0	0	1	1	0	6	1.5
22	Romano, Alexa	7-0	35	5.0	3-10	.300	2-8	.250	1-1	1.000	0	2	2	0.3	4	0	1	1	0	0	9	1.3
02	Coffee, Shannon	7-0	32	4.6	3-8	.375	1-3	.333	0-0	.000	1	4	5	0.7	2	0	3	1	1	0	7	1.0
	Team										9	11	20				2					
	Total.....	7	1400		218-445	.490	72-184	.391	87-130	.669	85	191	276	39.4	115	1	132	96	38	68	595	85.0
	Opponents.....	7	1400		147-392	.375	62-156	.397	72-99	.727	44	145	189	27.0	128	-	78	118	10	47	428	61.1

TEAM STATISTICS	STAN	OPP	Date	Opponent	Score	Att.
SCORING	595	428	11/7/18	UC DAVIS	w 71-43	2471
Points per game	85.0	61.1	11/11/18	IDAHO	w 115-71	2582
Scoring margin	+23.9	-	11/15/18	SAN FRANCISCO	w 96-62	2077
FIELD GOALS-ATT	218-445	147-392	# 11/23/18	vs FGCU	w 88-65	1346
Field goal pct	.490	.375	# 11/24/18	vs American	w 71-49	1268
3 POINT FG-ATT	72-184	62-156	# 11/25/18	at Hawaii	w 81-59	1383
3-point FG pct	.391	.397	12/2/18	at Gonzaga	L 73-79	6000
3-pt FG made per game	10.3	8.9				
FREE THROWS-ATT	87-130	72-99				
Free throw pct	.669	.727				
F-Throws made per game	12.4	10.3				
REBOUNDS	276	189				
Rebounds per game	39.4	27.0				
Rebounding margin	+12.4	-				
ASSISTS	132	78				
Assists per game	18.9	11.1				
TURNOVERS	96	118				
Turnovers per game	13.7	16.9				
Turnover margin	+3.1	-				
Assist/turnover ratio	1.4	0.7				
STEALS	68	47				
Steals per game	9.7	6.7				
BLOCKS	38	10				
Blocks per game	5.4	1.4				
ATTENDANCE	7130	9997				
Home games-Avg/Game	3-2377	2-3692				
Neutral site-Avg/Game	-	2-1307				

* = Pac-12
= Rainbow Wahine Showdown; Honolulu, O'ahu

Score by Periods	1st	2nd	3rd	4th	Totals
Stanford	136	139	161	159	595
Opponents	97	113	121	97	428

POINTS-REBOUNDS-ASSISTS

OPPONENT	#2 SC	#3 AW	#4 NF	#10 AJ	#11 AS	#12 LH	#13 MS	#14 MB	#15 MD	#20 EM	#21 DC	#22 AR	#23 KW	#24 LH	#54 JB
UC Davis	0-1-1	0-5-1	2-4-0	6-8-0	16-2-1	11-11-0	DNP	0-0-0	10-6-1	0-0-0	0-2-1	6-2-0	14-1-3	2-3-0	4-3-2
Idaho	2-1-0	10-1-1	16-8-2	4-6-2	19-9-4	17-5-0	DNP	2-0-0	10-5-0	3-0-1	6-4-1	0-0-1	19-3-9	0-2-2	7-3-3
San Francisco	0-0-2	2-0-0	7-3-2	7-2-0	18-7-3	4-5-3	DNP	4-1-0	10-3-6	5-1-1	9-5-4	0-0-0	21-0-3	6-1-0	3-2-0
FGCU	0-1-0	8-4-3	24-8-5	2-3-1	6-6-2	DNP	DNP	DNP	6-4-1	3-0-0	16-9-3	3-0-0	17-6-2	3-4-4	0-0-1
American	3-1-0	0-1-2	10-5-2	3-3-0	25-8-4	DNP	DNP	DNP	4-3-1	0-0-0	13-7-1	0-0-0	9-0-7	0-3-0	4-3-1
Hawaii	2-1-0	2-4-0	7-6-1	4-2-1	30-4-3	DNP	DNP	0-0-0	7-1-0	0-0-0	12-4-4	0-0-0	9-4-3	8-3-6	0-0-0
Gonzaga	0-0-0	DNP	5-3-3	6-4-0	13-7-1	DNP	DNP	DNP	8-4-2	DNP	13-3-1	0-0-0	18-1-3	9-1-3	1-0-1

GAME-BY-GAME STARTERS

OPPONENT	DATE	SCORE	W/L	1	2	3	4	5
UC Davis	11/7	71-43	W	Williams	Carrington	Lexie Hull	Smith	Fingall
Idaho	11/11	115-71	W	Williams	Carrington	Lexie Hull	Smith	Fingall
San Francisco	11/15	96-62	W	Williams	Carrington	Lexie Hull	Smith	Fingall
FGCU	11/23	88-65	W	Williams	Wilson	Carrington	Smith	Fingall
American	11/24	71-49	W	Williams	Wilson	Carrington	Smith	Fingall
Hawaii	11/25	81-59	W	Williams	Wilson	Carrington	Smith	Fingall
Gonzaga	12/2	73-79	L	Williams	Carrington	Lacie Hull	Smith	Fingall

**2018-19 Stanford Women's Basketball
Stanford Season/Career Statistics (as of Dec 02, 2018)
All games**

SEASON STATISTICS

CAREER STATISTICS

SUMMARY	gp-gs	min/q	fg%	3fg%	ft%	r/q	a/q	stl	blk	pts/q	gp-gs	min/q	fg%	3fg%	ft%	r/q	a/q	stl	blk	pts/q
Smith, Alanna	7-7	22.6	.577	.485	.778	6.1	2.6	10	11	18.1	114-45	20.1	.473	.335	.640	5.1	0.9	85	158	9.9
Williams, Kiana	7-7	30.7	.506	.465	.700	2.1	4.3	5	0	15.3	42-33	26.5	.433	.399	.796	1.7	2.3	35	5	11.2
Hull, Lexie	3-3	25.7	.444	.400	1.000	7.0	1.0	8	3	10.7	3-3	25.7	.444	.400	1.000	7.0	1.0	8	3	10.7
Fingall, Nadia	7-7	21.7	.592	.417	.533	5.3	2.1	5	3	10.1	77-15	12.6	.502	.357	.577	3.1	0.7	34	29	4.4
Carrington, DiJonai	7-7	20.3	.442	.294	.692	4.9	2.1	11	0	9.9	74-14	15.4	.415	.276	.667	3.9	1.2	76	10	5.9
Dodson, Maya	7-0	19.7	.595	.000	.333	3.7	1.6	3	13	7.9	40-4	12.8	.524	.000	.375	2.3	0.4	5	40	4.3
Jerome, Alyssa	7-0	14.3	.360	.375	.733	4.0	0.6	1	3	4.6	41-1	10.7	.389	.308	.714	1.6	0.4	2	6	2.5
Hull, Lacie	7-1	23.1	.360	.400	1.000	2.4	2.1	17	3	4.0	7-1	23.1	.360	.400	1.000	2.4	2.1	17	3	4.0
Wilson, Anna	6-3	12.3	.304	.222	1.000	2.5	1.2	6	0	3.7	33-5	10.5	.316	.295	.636	1.3	0.6	19	1	3.3
Brown, Jenna	7-0	11.1	.368	.143	.444	1.6	1.1	0	0	2.7	7-0	11.1	.368	.143	.444	1.6	1.1	0	0	2.7
Moschkau, Estella	6-0	4.2	1.000	1.000	.000	0.2	0.3	2	0	1.8	29-0	2.6	.615	.600	.500	0.2	0.1	2	0	0.8
Brewer, Mikaela	4-0	3.0	.500	.000	1.000	0.3	0.0	0	1	1.5	31-0	3.3	.268	.222	1.000	0.3	0.2	1	1	1.0
Romano, Alexa	7-0	5.0	.300	.250	1.000	0.3	0.1	0	0	1.3	75-8	6.7	.350	.309	.700	0.7	0.4	20	4	1.6
Coffee, Shannon	7-0	4.6	.375	.333	.000	0.7	0.4	0	1	1.0	66-2	4.2	.436	.310	.406	1.0	0.2	5	9	1.6

SCORING	fg-fga	fg%	3fg-fga	3fg%	ft-fta	ft%	pts	pts/q	fg-fga	fg%	3fg-fga	3fg%	ft-fta	ft%	pts	pts/q
Smith, Alanna	45-78	.577	16-33	.485	21-27	.778	127	18.1	443-937	.473	90-269	.335	155-242	.640	1131	9.9
Williams, Kiana	40-79	.506	20-43	.465	7-10	.700	107	15.3	168-388	.433	91-228	.399	43-54	.796	470	11.2
Hull, Lexie	12-27	.444	6-15	.400	2-2	1.000	32	10.7	12-27	.444	6-15	.400	2-2	1.000	32	10.7
Fingall, Nadia	29-49	.592	5-12	.417	8-15	.533	71	10.1	137-273	.502	20-56	.357	45-78	.577	339	4.4
Carrington, DiJonai	23-52	.442	5-17	.294	18-26	.692	69	9.9	165-398	.415	40-145	.276	68-102	.667	438	5.9
Dodson, Maya	25-42	.595	0-0	.000	5-15	.333	55	7.9	76-145	.524	0-0	.000	18-48	.375	170	4.3
Jerome, Alyssa	9-25	.360	3-8	.375	11-15	.733	32	4.6	37-95	.389	12-39	.308	15-21	.714	101	2.5
Hull, Lacie	9-25	.360	6-15	.400	4-4	1.000	28	4.0	9-25	.360	6-15	.400	4-4	1.000	28	4.0
Wilson, Anna	7-23	.304	4-18	.222	4-4	1.000	22	3.7	37-117	.316	28-95	.295	7-11	.636	109	3.3
Brown, Jenna	7-19	.368	1-7	.143	4-9	.444	19	2.7	7-19	.368	1-7	.143	4-9	.444	19	2.7
Moschkau, Estella	4-4	1.000	3-3	1.000	0-0	.000	11	1.8	8-13	.615	6-10	.600	1-2	.500	23	0.8
Brewer, Mikaela	2-4	.500	0-2	.000	2-2	1.000	6	1.5	11-41	.268	6-27	.222	2-2	1.000	30	1.0
Romano, Alexa	3-10	.300	2-8	.250	1-1	1.000	9	1.3	43-123	.350	21-68	.309	14-20	.700	121	1.6
Coffee, Shannon	3-8	.375	1-3	.333	0-0	.000	7	1.0	41-94	.436	9-29	.310	13-32	.406	104	1.6

TOTALS	o-reb	d-reb	t-reb	pf	fo	ast	to	a/to	o-reb	d-reb	t-reb	pf	fo	ast	to	a/to
Smith, Alanna	12	31	43	17	1	18	20	0.9	198	378	576	264	8	106	193	0.5
Williams, Kiana	0	15	15	6	0	30	18	1.7	4	69	73	44	0	97	58	1.7
Hull, Lexie	9	12	21	8	0	3	4	0.8	9	12	21	8	0	3	4	0.8
Fingall, Nadia	18	19	37	15	0	15	10	1.5	92	145	237	119	1	56	62	0.9
Carrington, DiJonai	7	27	34	10	0	15	10	1.5	79	213	292	111	0	87	103	0.8
Dodson, Maya	14	12	26	13	0	11	6	1.8	46	47	93	51	1	16	32	0.5
Jerome, Alyssa	7	21	28	11	0	4	5	0.8	18	46	64	38	0	18	27	0.7
Hull, Lacie	4	13	17	11	0	15	6	2.5	4	13	17	11	0	15	6	2.5
Wilson, Anna	3	12	15	11	0	7	2	3.5	4	40	44	37	0	20	22	0.9
Brown, Jenna	0	11	11	5	0	8	5	1.6	0	11	11	5	0	8	5	1.6
Moschkau, Estella	1	0	1	1	0	2	5	0.4	3	2	5	5	0	4	5	0.8
Brewer, Mikaela	0	1	1	1	0	0	1	0.0	1	7	8	4	0	6	11	0.5
Romano, Alexa	0	2	2	4	0	1	1	1.0	9	44	53	22	0	31	30	1.0
Coffee, Shannon	1	4	5	2	0	3	1	3.0	13	50	63	26	0	13	32	0.4

2018-19 Individual Game-by-Game**#02 Coffee, Shannon**

Opponent	Date	gs	min	Total		3-Pointers		Free throws		Rebounds				pf	a	t/o	blk	stl	pts	avg
				fg-fga	pct	3fg-fga	pct	ft-fga	pct	off	def	tot	avg							
UC DAVIS	11/7/18		6	0-1	.000	0-0	.000	0-0	.000	1	0	1	1.0	1	1	1	0	0	0	0.0
IDAHO	11/11/18		6	1-1	1.000	0-0	.000	0-0	.000	0	1	1	1.0	1	0	0	0	0	2	1.0
SAN FRANCISCO	11/15/18		8	0-1	.000	0-1	.000	0-0	.000	0	0	0	0.7	0	2	0	1	0	0	0.7
vs FGCU	11/23/18		1	0-0	.000	0-0	.000	0-0	.000	0	1	1	0.8	0	0	0	0	0	0	0.5
vs American	11/24/18		4	1-3	.333	1-2	.500	0-0	.000	0	1	1	0.8	0	0	0	0	0	3	1.0
at Hawaii	11/25/18		5	1-2	.500	0-0	.000	0-0	.000	0	1	1	0.8	0	0	0	0	0	2	1.2
at Gonzaga	12/2/18		2	0-0	.000	0-0	.000	0-0	.000	0	0	0	0.7	0	0	0	0	0	0	1.0
Totals		0	32	3-8	.375	1-3	.333	0-0	.000	1	4	5	0.7	2	3	1	1	0	7	1.0

#03 Wilson, Anna

Opponent	Date	gs	min	Total		3-Pointers		Free throws		Rebounds				pf	a	t/o	blk	stl	pts	avg
				fg-fga	pct	3fg-fga	pct	ft-fga	pct	off	def	tot	avg							
UC DAVIS	11/7/18		13	0-4	.000	0-4	.000	0-0	.000	0	5	5	5.0	1	1	1	0	1	0	0.0
IDAHO	11/11/18		11	3-8	.375	2-6	.333	2-2	1.000	1	0	1	3.0	2	1	0	0	2	10	5.0
SAN FRANCISCO	11/15/18		13	1-3	.333	0-1	.000	0-0	.000	0	0	0	2.0	2	0	0	0	1	2	4.0
vs FGCU	11/23/18	*	17	3-6	.500	2-5	.400	0-0	.000	1	3	4	2.5	2	3	1	0	1	8	5.0
vs American	11/24/18	*	5	0-0	.000	0-0	.000	0-0	.000	1	0	1	2.2	3	2	0	0	0	0	4.0
at Hawaii	11/25/18	*	15	0-2	.000	0-2	.000	2-2	1.000	0	4	4	2.5	1	0	0	0	1	2	3.7
at Gonzaga	12/2/18		dnp	-	-	-	-	-	-	-	-	-	-	-	-	-	-	-	-	-
Totals		3	74	7-23	.304	4-18	.222	4-4	1.000	3	12	15	2.5	11	7	2	0	6	22	3.7

#04 Fingall, Nadia

Opponent	Date	gs	min	Total		3-Pointers		Free throws		Rebounds				pf	a	t/o	blk	stl	pts	avg
				fg-fga	pct	3fg-fga	pct	ft-fga	pct	off	def	tot	avg							
UC DAVIS	11/7/18	*	16	0-1	.000	0-0	.000	2-2	1.000	1	3	4	4.0	3	0	3	0	0	2	2.0
IDAHO	11/11/18	*	20	7-9	.778	0-0	.000	2-5	.400	3	5	8	6.0	1	2	1	2	0	16	9.0
SAN FRANCISCO	11/15/18	*	13	3-6	.500	1-3	.333	0-0	.000	2	1	3	5.0	3	2	1	0	0	7	8.3
vs FGCU	11/23/18	*	30	11-14	.786	1-2	.500	1-4	.250	5	3	8	5.8	2	5	1	0	1	24	12.3
vs American	11/24/18	*	24	3-8	.375	1-4	.250	3-4	.750	4	1	5	5.6	3	2	1	0	1	10	11.8
at Hawaii	11/25/18	*	24	3-7	.429	1-1	1.000	0-0	.000	2	4	6	5.7	1	1	2	0	1	7	11.0
at Gonzaga	12/2/18	*	25	2-4	.500	1-2	.500	0-0	.000	1	2	3	5.3	2	3	1	1	2	5	10.1
Totals		7	152	29-49	.592	5-12	.417	8-15	.533	18	19	37	5.3	15	15	10	3	5	71	10.1

#10 Jerome, Alyssa

Opponent	Date	gs	min	Total		3-Pointers		Free throws		Rebounds				pf	a	t/o	blk	stl	pts	avg
				fg-fga	pct	3fg-fga	pct	ft-fga	pct	off	def	tot	avg							
UC DAVIS	11/7/18		16	2-5	.400	0-1	.000	2-2	1.000	2	6	8	8.0	0	0	1	0	0	6	6.0
IDAHO	11/11/18		13	1-2	.500	0-1	.000	2-2	1.000	0	6	6	7.0	4	2	1	0	0	4	5.0
SAN FRANCISCO	11/15/18		16	3-4	.750	1-2	.500	0-1	.000	0	2	2	5.3	2	0	0	2	0	7	5.7
vs FGCU	11/23/18		14	1-4	.250	0-0	.000	0-0	.000	0	3	3	4.8	1	1	2	0	0	2	4.8
vs American	11/24/18		12	0-2	.000	0-1	.000	3-4	.750	2	1	3	4.4	2	0	1	0	0	3	4.4
at Hawaii	11/25/18		11	0-3	.000	0-1	.000	4-6	.667	2	0	2	4.0	1	1	0	0	1	4	4.3
at Gonzaga	12/2/18		18	2-5	.400	2-2	1.000	0-0	.000	1	3	4	4.0	1	0	0	1	0	6	4.6
Totals		0	100	9-25	.360	3-8	.375	11-15	.733	7	21	28	4.0	11	4	5	3	1	32	4.6

#11 Smith, Alanna

Opponent	Date	gs	min	Total		3-Pointers		Free throws		Rebounds				pf	a	t/o	blk	stl	pts	avg
				fg-fga	pct	3fg-fga	pct	ft-fga	pct	off	def	tot	avg							
UC DAVIS	11/7/18	*	15	4-7	.571	1-2	.500	7-7	1.000	1	1	2	2.0	4	1	4	1	1	16	16.0
IDAHO	11/11/18	*	24	8-12	.667	2-5	.400	1-1	1.000	4	5	9	5.5	0	4	3	1	2	19	17.5
SAN FRANCISCO	11/15/18	*	26	6-12	.500	5-8	.625	1-2	.500	0	7	7	6.0	1	3	1	4	1	18	17.7
vs FGCU	11/23/18	*	13	1-5	.200	0-1	.000	4-5	.800	2	4	6	6.0	4	2	3	1	1	6	14.8
vs American	11/24/18	*	31	10-18	.556	3-6	.500	2-3	.667	1	7	8	6.4	1	4	3	1	2	25	16.8
at Hawaii	11/25/18	*	25	12-15	.800	3-6	.500	3-3	1.000	2	2	4	6.0	2	3	3	1	0	30	19.0
at Gonzaga	12/2/18	*	24	4-9	.444	2-5	.400	3-6	.500	2	5	7	6.1	5	1	3	2	3	13	18.1
Totals		7	158	45-78	.577	16-33	.485	21-27	.778	12	31	43	6.1	17	18	20	11	10	127	18.1

2018-19 Individual Game-by-Game**#12 Hull, Lexie**

Opponent	Date	gs	min	Total		3-Pointers		Free throws		Rebounds				pf	a	t/o	blk	stl	pts	avg
				fg-fga	pct	3fg-fga	pct	ft-fa	pct	off	def	tot	avg							
UC DAVIS	11/7/18	*	27	5-10	.500	1-4	.250	0-0	.000	3	8	11	11.0	3	0	2	1	4	11	11.0
IDAHO	11/11/18	*	25	6-12	.500	5-10	.500	0-0	.000	2	3	5	8.0	3	0	0	2	2	17	14.0
SAN FRANCISCO	11/15/18	*	25	1-5	.200	0-1	.000	2-2	1.000	4	1	5	7.0	2	3	2	0	2	4	10.7
vs FGCU	11/23/18	dnp		-	-	-	-	-	-	-	-	-	-	-	-	-	-	-	-	-
vs American	11/24/18	dnp		-	-	-	-	-	-	-	-	-	-	-	-	-	-	-	-	-
at Hawaii	11/25/18	dnp		-	-	-	-	-	-	-	-	-	-	-	-	-	-	-	-	-
at Gonzaga	12/2/18	dnp		-	-	-	-	-	-	-	-	-	-	-	-	-	-	-	-	-
Totals		3	77	12-27	.444	6-15	.400	2-2	1.000	9	12	21	7.0	8	3	4	3	8	32	10.7

#14 Brewer, Mikaela

Opponent	Date	gs	min	Total		3-Pointers		Free throws		Rebounds				pf	a	t/o	blk	stl	pts	avg
				fg-fga	pct	3fg-fga	pct	ft-fa	pct	off	def	tot	avg							
UC DAVIS	11/7/18		2	0-1	.000	0-1	.000	0-0	.000	0	0	0	0.0	0	0	1	0	0	0	0.0
IDAHO	11/11/18		5	1-2	.500	0-1	.000	0-0	.000	0	0	0	0.0	0	0	1	0	0	2	1.0
SAN FRANCISCO	11/15/18		4	1-1	1.000	0-0	.000	2-2	1.000	0	1	1	0.3	1	0	0	0	0	4	2.0
vs FGCU	11/23/18	dnp		-	-	-	-	-	-	-	-	-	-	-	-	-	-	-	-	-
vs American	11/24/18	dnp		-	-	-	-	-	-	-	-	-	-	-	-	-	-	-	-	-
at Hawaii	11/25/18		1	0-0	.000	0-0	.000	0-0	.000	0	0	0	0.3	0	0	0	0	0	0	1.5
at Gonzaga	12/2/18	dnp		-	-	-	-	-	-	-	-	-	-	-	-	-	-	-	-	-
Totals		0	12	2-4	.500	0-2	.000	2-2	1.000	0	1	1	0.3	1	0	1	1	0	6	1.5

#15 Dodson, Maya

Opponent	Date	gs	min	Total		3-Pointers		Free throws		Rebounds				pf	a	t/o	blk	stl	pts	avg
				fg-fga	pct	3fg-fga	pct	ft-fa	pct	off	def	tot	avg							
UC DAVIS	11/7/18		25	5-8	.625	0-0	.000	0-2	.000	4	2	6	6.0	3	1	1	3	2	10	10.0
IDAHO	11/11/18		19	5-8	.625	0-0	.000	0-0	.000	3	2	5	5.5	2	0	0	1	1	10	10.0
SAN FRANCISCO	11/15/18		19	4-7	.571	0-0	.000	2-5	.400	0	3	3	4.7	2	6	0	4	0	10	10.0
vs FGCU	11/23/18		22	3-5	.600	0-0	.000	0-2	.000	2	2	4	4.5	1	1	1	0	0	6	9.0
vs American	11/24/18		18	2-4	.500	0-0	.000	0-0	.000	1	2	3	4.2	1	1	1	1	0	4	8.0
at Hawaii	11/25/18		15	3-4	.750	0-0	.000	1-1	1.000	0	1	1	3.7	2	0	1	2	0	7	7.8
at Gonzaga	12/2/18		20	3-6	.500	0-0	.000	2-5	.400	4	0	4	3.7	2	2	2	0	8	7.9	
Totals		0	138	25-42	.595	0-0	.000	5-15	.333	14	12	26	3.7	13	11	6	13	3	55	7.9

#20 Moschkau, Estella

Opponent	Date	gs	min	Total		3-Pointers		Free throws		Rebounds				pf	a	t/o	blk	stl	pts	avg
				fg-fga	pct	3fg-fga	pct	ft-fa	pct	off	def	tot	avg							
UC DAVIS	11/7/18		4	0-0	.000	0-0	.000	0-0	.000	0	0	0	0.0	0	0	0	0	0	0	0.0
IDAHO	11/11/18		6	1-1	1.000	1-1	1.000	0-0	.000	0	0	0	0.0	0	1	1	0	0	3	1.5
SAN FRANCISCO	11/15/18		5	2-2	1.000	1-1	1.000	0-0	.000	1	0	1	0.3	0	1	1	0	0	5	2.7
vs FGCU	11/23/18		2	1-1	1.000	1-1	1.000	0-0	.000	0	0	0	0.3	0	0	1	0	0	3	2.8
vs American	11/24/18		2	0-0	.000	0-0	.000	0-0	.000	0	0	0	0.2	0	0	0	0	0	0	2.2
at Hawaii	11/25/18		6	0-0	.000	0-0	.000	0-0	.000	0	0	0	0.2	1	0	2	0	2	0	1.8
at Gonzaga	12/2/18	dnp		-	-	-	-	-	-	-	-	-	-	-	-	-	-	-	-	-
Totals		0	25	4-4	1.000	3-3	1.000	0-0	.000	1	0	1	0.2	1	2	5	0	2	11	1.8

#21 Carrington, DiJonai

Opponent	Date	gs	min	Total		3-Pointers		Free throws		Rebounds				pf	a	t/o	blk	stl	pts	avg
				fg-fga	pct	3fg-fga	pct	ft-fa	pct	off	def	tot	avg							
UC DAVIS	11/7/18	*	13	0-6	.000	0-2	.000	0-0	.000	0	2	2	2.0	2	1	1	0	2	0	0.0
IDAHO	11/11/18	*	11	2-8	.250	1-4	.250	1-2	.500	3	1	4	3.0	0	1	0	0	0	6	3.0
SAN FRANCISCO	11/15/18	*	18	4-7	.571	1-4	.250	0-0	.000	1	4	5	3.7	1	4	2	0	0	9	5.0
vs FGCU	11/23/18	*	32	2-5	.400	0-0	.000	12-15	.800	0	9	9	5.0	1	3	2	0	1	16	7.8
vs American	11/24/18	*	22	6-7	.857	0-0	.000	1-1	1.000	2	5	7	5.4	2	1	1	0	2	13	8.8
at Hawaii	11/25/18	*	19	4-6	.667	2-2	1.000	2-3	.667	1	3	4	5.2	1	4	2	0	3	12	9.3
at Gonzaga	12/2/18	*	27	5-13	.385	1-5	.200	2-5	.400	0	3	3	4.9	3	1	2	0	3	13	9.9
Totals		7	142	23-52	.442	5-17	.294	18-26	.692	7	27	34	4.9	10	15	10	0	11	69	9.9

2018-19 Individual Game-by-Game

#22 Romano, Alexa

Opponent	Date	gs	min	Total		3-Pointers		Free throws		Rebounds				pf	a	t/o	blk	stl	pts	avg
				fg-fga	pct	3fg-fga	pct	ft-fta	pct	off	def	tot	avg							
UC DAVIS	11/7/18		9	2-3	.667	1-2	.500	1-1	1.000	0	2	2	2.0	0	0	1	0	0	6	6.0
IDAHO	11/11/18		7	0-3	.000	0-2	.000	0-0	.000	0	0	0	1.0	2	1	0	0	0	0	3.0
SAN FRANCISCO	11/15/18		5	0-0	.000	0-0	.000	0-0	.000	0	0	0	0.7	1	0	0	0	0	0	2.0
vs FGCU	11/23/18		8	1-3	.333	1-3	.333	0-0	.000	0	0	0	0.5	0	0	0	0	0	3	2.3
vs American	11/24/18		4	0-1	.000	0-1	.000	0-0	.000	0	0	0	0.4	1	0	0	0	0	0	1.8
at Hawaii	11/25/18		2	0-0	.000	0-0	.000	0-0	.000	0	0	0	0.3	0	0	0	0	0	0	1.5
at Gonzaga	12/2/18		0	0-0	.000	0-0	.000	0-0	.000	0	0	0	0.3	0	0	0	0	0	0	1.3
Totals		0	35	3-10	.300	2-8	.250	1-1	1.000	0	2	2	0.3	4	1	1	0	0	9	1.3

#23 Williams, Kiana

Opponent	Date	gs	min	Total		3-Pointers		Free throws		Rebounds				pf	a	t/o	blk	stl	pts	avg
				fg-fga	pct	3fg-fga	pct	ft-fta	pct	off	def	tot	avg							
UC DAVIS	11/7/18	*	18	5-8	.625	3-5	.600	1-2	.500	0	1	1	1.0	0	3	2	0	0	14	14.0
IDAHO	11/11/18	*	28	7-10	.700	4-7	.571	1-1	1.000	0	3	3	2.0	1	9	2	0	1	19	16.5
SAN FRANCISCO	11/15/18	*	26	8-13	.615	4-6	.667	1-1	1.000	0	0	0	1.3	1	3	2	0	0	21	18.0
vs FGCU	11/23/18	*	35	6-10	.600	5-8	.625	0-0	.000	0	6	6	2.5	0	2	4	0	1	17	17.8
vs American	11/24/18	*	33	3-12	.250	2-6	.333	1-2	.500	0	0	0	2.0	2	7	3	0	0	9	16.0
at Hawaii	11/25/18	*	35	4-9	.444	0-5	.000	1-2	.500	0	4	4	2.3	0	3	1	0	2	9	14.8
at Gonzaga	12/2/18	*	40	7-17	.412	2-6	.333	2-2	1.000	0	1	1	2.1	2	3	4	0	1	18	15.3
Totals		7	215	40-79	.506	20-43	.465	7-10	.700	0	15	15	2.1	6	30	18	0	5	107	15.3

#24 Hull, Lacie

Opponent	Date	gs	min	Total		3-Pointers		Free throws		Rebounds				pf	a	t/o	blk	stl	pts	avg
				fg-fga	pct	3fg-fga	pct	ft-fta	pct	off	def	tot	avg							
UC DAVIS	11/7/18		17	1-5	.200	0-3	.000	0-0	.000	0	3	3	3.0	0	0	1	0	2	2	2.0
IDAHO	11/11/18		12	0-2	.000	0-0	.000	0-0	.000	2	0	2	2.5	3	2	0	1	0	0	1.0
SAN FRANCISCO	11/15/18		13	2-5	.400	2-4	.500	0-0	.000	0	1	1	2.0	2	0	0	0	0	6	2.7
vs FGCU	11/23/18		22	1-3	.333	1-2	.500	0-0	.000	1	3	4	2.5	3	4	0	0	2	3	2.8
vs American	11/24/18		33	0-3	.000	0-1	.000	0-0	.000	0	3	3	2.6	1	0	2	0	7	0	2.2
at Hawaii	11/25/18		28	3-4	.750	2-3	.667	0-0	.000	0	3	3	2.7	0	6	2	2	3	8	3.2
at Gonzaga	12/2/18	*	37	2-3	.667	1-2	.500	4-4	1.000	1	0	1	2.4	2	3	1	0	3	9	4.0
Totals		1	162	9-25	.360	6-15	.400	4-4	1.000	4	13	17	2.4	11	15	6	3	17	28	4.0

#54 Brown, Jenna

Opponent	Date	gs	min	Total		3-Pointers		Free throws		Rebounds				pf	a	t/o	blk	stl	pts	avg
				fg-fga	pct	3fg-fga	pct	ft-fta	pct	off	def	tot	avg							
UC DAVIS	11/7/18		19	2-2	1.000	0-0	.000	0-2	.000	0	3	3	3.0	1	2	3	0	0	4	4.0
IDAHO	11/11/18		13	3-6	.500	1-4	.250	0-0	.000	0	3	3	3.0	0	3	1	0	0	7	5.5
SAN FRANCISCO	11/15/18		9	1-4	.250	0-1	.000	1-2	.500	0	2	2	2.7	1	0	0	0	0	3	4.7
vs FGCU	11/23/18		4	0-2	.000	0-0	.000	0-0	.000	0	0	0	2.0	0	1	0	0	0	0	3.5
vs American	11/24/18		12	1-4	.250	0-1	.000	2-3	.667	0	3	3	2.2	0	1	0	0	0	4	3.6
at Hawaii	11/25/18		14	0-1	.000	0-1	.000	0-0	.000	0	0	0	1.8	2	0	0	0	0	0	3.0
at Gonzaga	12/2/18		7	0-0	.000	0-0	.000	1-2	.500	0	0	0	1.6	1	1	1	0	0	1	2.7
Totals		0	78	7-19	.368	1-7	.143	4-9	.444	0	11	11	1.6	5	8	5	0	0	19	2.7

Stanford Women's Basketball Individual Career History

Brewer, Mikaela

Season	gp-gs	min/avg	Total		3-Point		F-Throws		Rebounds					Scoring						
			fg-fga	pct	fg-fga	pct	ft-fa	pct	off	def	tot	avg	pf	fo	ast	to	blk	stl	pts	avg
2016-17	10-0	60/6.0	7-23	.304	5-16	.313	0-0	.000	1	5	6	0.6	3	0	4	7	0	1	19	1.9
2017-18	17-0	31/1.8	2-14	.143	1-9	.111	0-0	.000	0	1	1	0.1	0	0	2	3	0	0	5	0.3
2018-19	4-0	12/3.0	2-4	.500	0-2	.000	2-2	1.000	0	1	1	0.3	1	0	0	1	1	0	6	1.5
TOTAL	31-0	103/3.3	11-41	.268	6-27	.222	2-2	1.000	1	7	8	0.3	4	0	6	11	1	1	30	1.0

SINGLE-GAME HIGHS [all-time ranking]:

Points: 6, Cal Poly -- 11/11/16

Rebounds: 2, Cal Poly -- 11/11/16

Assists: 2, CSUN -- 11/20/16; vs Wichita St. -- 11/25/16

Steals: 1, UC Davis -- 12/4/16

Blocks: 1, UC Davis -- 11/7/18; UC Davis -- 11/07/18

FG made: 2, Cal Poly -- 11/11/16; vs Wichita St. -- 11/25/16

FG attempts: 6, CSUN -- 11/20/16; vs Wichita St. -- 11/25/16

3FG made: 2, Cal Poly -- 11/11/16

3FG attempts: 5, vs Wichita St. -- 11/25/16

FT made: 2, San Francisco -- 11/15/18; San Francisco -- 11/15/18

FT attempts: 2, San Francisco -- 11/15/18; San Francisco -- 11/15/18

Brown, Jenna

Season	gp-gs	min/avg	Total		3-Point		F-Throws		Rebounds					Scoring						
			fg-fga	pct	fg-fga	pct	ft-fa	pct	off	def	tot	avg	pf	fo	ast	to	blk	stl	pts	avg
2018-19	7-0	78/11.1	7-19	.368	1-7	.143	4-9	.444	0	11	11	1.6	5	0	8	5	0	0	19	2.7
TOTAL	7-0	78/11.1	7-19	.368	1-7	.143	4-9	.444	0	11	11	1.6	5	0	8	5	0	0	19	2.7

SINGLE-GAME HIGHS [all-time ranking]:

Points: 7, Idaho -- 11/11/18; Idaho -- 11/11/18

Rebounds: 3, 5 times

Assists: 3, Idaho -- 11/11/18; Idaho -- 11/11/18

FG made: 3, Idaho -- 11/11/18; Idaho -- 11/11/18

FG attempts: 6, Idaho -- 11/11/18; Idaho -- 11/11/18

3FG made: 1, Idaho -- 11/11/18; Idaho -- 11/11/18

3FG attempts: 4, Idaho -- 11/11/18; Idaho -- 11/11/18

FT made: 2, vs American -- 11/24/18

FT attempts: 3, vs American -- 11/24/18

Carrington, DiJonai

Season	gp-gs	min/avg	Total		3-Point		F-Throws		Rebounds					Scoring						
			fg-fga	pct	fg-fga	pct	ft-fa	pct	off	def	tot	avg	pf	fo	ast	to	blk	stl	pts	avg
2016-17	35-0	274/7.8	35-79	.443	5-21	.238	11-19	.579	21	59	80	2.3	36	0	14	24	3	19	86	2.5
2017-18	32-7	721/22.5	107-267	.401	30-107	.280	39-57	.684	51	127	178	5.6	65	0	58	69	7	46	283	8.8
2018-19	7-7	142/20.3	23-52	.442	5-17	.294	18-26	.692	7	27	34	4.9	10	0	15	10	0	11	69	9.9
TOTAL	74-14	1137/15.4	165-398	.415	40-145	.276	68-102	.667	79	213	292	3.9	111	0	87	103	10	76	438	5.9

SINGLE-GAME HIGHS [all-time ranking]:

Points: 24, vs Kent State -- 11/23/17; vs Kent State -- 11/23/17

Rebounds: 22, UC Riverside -- 11/17/17; UC Riverside -- 11/17/17

Assists: 5, 4 times

Steals: 4, at USC -- 1/19/18

Blocks: 1, 11 times

FG made: 10, vs Kent State -- 11/23/17; vs Kent State -- 11/23/17

FG attempts: 17, UC Riverside -- 11/17/17; UC Riverside -- 11/17/17

3FG made: 3, vs UConn -- 11/12/17; at San Francisco -- 11/29/17; vs UConn -- 11/12/17

3FG attempts: 8, 4 times

FT made: 12, vs FGCU -- 11/23/18

FT attempts: 15, vs FGCU -- 11/23/18

Stanford Women's Basketball Individual Career History

Coffee, Shannon

Season	gp-gs	min/avg	Total		3-Point		F-Throws		Rebounds				Scoring							
			fg-fga	pct	fg-fga	pct	ft-fta	pct	off	def	tot	avg	pf	fo	ast	to	blk	stl	pts	avg
2015-16	12-0	45/3.8	9-21	.429	0-2	.000	3-13	.231	3	10	13	1.1	3	0	1	7	1	0	21	1.8
2016-17	20-0	86/4.3	17-27	.630	1-4	.250	9-17	.529	4	17	21	1.1	9	0	3	10	3	2	44	2.2
2017-18	27-2	112/4.1	12-38	.316	7-20	.350	1-2	.500	5	19	24	0.9	12	0	6	14	4	3	32	1.2
2018-19	7-0	32/4.6	3-8	.375	1-3	.333	0-0	.000	1	4	5	0.7	2	0	3	1	1	0	7	1.0
TOTAL	66-2	275/4.2	41-94	.436	9-29	.310	13-32	.406	13	50	63	1.0	26	0	13	32	9	5	104	1.6

SINGLE-GAME HIGHS [all-time ranking]:

Points: 14, at Baylor -- 12/3/17

Rebounds: 7, vs Wichita St. -- 11/25/16

Assists: 3, UNLV -- 12/16/17

Steals: 1, 5 times

Blocks: 1, 10 times

FG made: 5, vs Wichita St. -- 11/25/16; at Baylor -- 12/3/17

FG attempts: 11, at Baylor -- 12/3/17

3FG made: 4, at Baylor -- 12/3/17

3FG attempts: 8, at Baylor -- 12/3/17

FT made: 3, vs Northeastern -- 11/24/16; vs Wichita St. -- 11/25/16

FT attempts: 10, CSU Bakersfield -- 12/22/15

Dodson, Maya

Season	gp-gs	min/avg	Total		3-Point		F-Throws		Rebounds				Scoring							
			fg-fga	pct	fg-fga	pct	ft-fta	pct	off	def	tot	avg	pf	fo	ast	to	blk	stl	pts	avg
2017-18	33-4	372/11.3	51-103	.495	0-0	.000	13-33	.394	32	35	67	2.0	38	1	5	26	27	2	115	3.5
2018-19	7-0	138/19.7	25-42	.595	0-0	.000	5-15	.333	14	12	26	3.7	13	0	11	6	13	3	55	7.9
TOTAL	40-4	510/12.8	76-145	.524	0-0	.000	18-48	.375	46	47	93	2.3	51	1	16	32	40	5	170	4.3

SINGLE-GAME HIGHS [all-time ranking]:

Points: 11, UNLV -- 12/16/17

Rebounds: 7, at Ohio State -- 11/10/17; at Baylor -- 12/3/17; at Ohio State -- 11/10/17

Assists: 6, San Francisco -- 11/15/18; San Francisco -- 11/15/18

Steals: 2, UC Davis -- 11/7/18; UC Davis -- 11/07/18

Blocks: 4, San Francisco -- 11/15/18; Western Illinois -- 12/18/17; San Francisco -- 11/15/18

FG made: 5, 6 times

FG attempts: 11, UNLV -- 12/16/17

FT made: 2, 5 times

FT attempts: 5, San Francisco -- 11/15/18; at Gonzaga -- 12/2/18; San Francisco -- 11/15/18

Fingall, Nadia

Season	gp-gs	min/avg	Total		3-Point		F-Throws		Rebounds				Scoring							
			fg-fga	pct	fg-fga	pct	ft-fta	pct	off	def	tot	avg	pf	fo	ast	to	blk	stl	pts	avg
2016-17	36-8	419/11.6	67-132	.508	2-13	.154	19-37	.514	42	51	93	2.6	52	0	22	30	13	13	155	4.3
2017-18	34-0	398/11.7	41-92	.446	13-31	.419	18-26	.692	32	75	107	3.1	52	1	19	22	13	16	113	3.3
2018-19	7-7	152/21.7	29-49	.592	5-12	.417	8-15	.533	18	19	37	5.3	15	0	15	10	3	5	71	10.1
TOTAL	77-15	969/12.6	137-273	.502	20-56	.357	45-78	.577	92	145	237	3.1	119	1	56	62	29	34	339	4.4

SINGLE-GAME HIGHS [all-time ranking]:

Points: 24, vs FGCU -- 11/23/18

Rebounds: 8, 5 times

Assists: 5, vs FGCU -- 11/23/18

Steals: 3, Utah -- 2/12/17

Blocks: 2, 6 times

FG made: 11, vs FGCU -- 11/23/18

FG attempts: 14, vs FGCU -- 11/23/18

3FG made: 2, 4 times

3FG attempts: 4, vs American -- 11/24/18; at Baylor -- 12/3/17

FT made: 4, at Arizona -- 1/1/17

FT attempts: 5, Idaho -- 11/11/18; at George Washington -- 12/21/16; Idaho -- 11/11/18

Stanford Women's Basketball Individual Career History

Hull, Lacie

Season	gp-gs	min/avg	Total		3-Point		F-Throws		Rebounds				Scoring							
			fg-fga	pct	fg-fga	pct	ft-fta	pct	off	def	tot	avg	pf	fo	ast	to	blk	stl	pts	avg
2018-19	7-1	162/23.1	9-25	.360	6-15	.400	4-4	1.000	4	13	17	2.4	11	0	15	6	3	17	28	4.0
TOTAL	7-1	162/23.1	9-25	.360	6-15	.400	4-4	1.000	4	13	17	2.4	11	0	15	6	3	17	28	4.0

SINGLE-GAME HIGHS [all-time ranking]:

Points: 9, at Gonzaga -- 12/2/18

Rebounds: 4, vs FGCU -- 11/23/18

Assists: 6, at Hawaii -- 11/25/18

Steals: 7, vs American -- 11/24/18

Blocks: 2, at Hawaii -- 11/25/18

FG made: 3, at Hawaii -- 11/25/18

FG attempts: 5, 4 times

3FG made: 2, San Francisco -- 11/15/18; at Hawaii -- 11/25/18; San Francisco -- 11/15/18

3FG attempts: 4, San Francisco -- 11/15/18; San Francisco -- 11/15/18

FT made: 4, at Gonzaga -- 12/2/18

FT attempts: 4, at Gonzaga -- 12/2/18

Hull, Lexie

Season	gp-gs	min/avg	Total		3-Point		F-Throws		Rebounds				Scoring							
			fg-fga	pct	fg-fga	pct	ft-fta	pct	off	def	tot	avg	pf	fo	ast	to	blk	stl	pts	avg
2018-19	3-3	77/25.7	12-27	.444	6-15	.400	2-2	1.000	9	12	21	7.0	8	0	3	4	3	8	32	10.7
TOTAL	3-3	77/25.7	12-27	.444	6-15	.400	2-2	1.000	9	12	21	7.0	8	0	3	4	3	8	32	10.7

SINGLE-GAME HIGHS [all-time ranking]:

Points: 17, Idaho -- 11/11/18; Idaho -- 11/11/18

Rebounds: 11, UC Davis -- 11/7/18; UC Davis -- 11/07/18

Assists: 3, San Francisco -- 11/15/18; San Francisco -- 11/15/18

Steals: 4, UC Davis -- 11/7/18; UC Davis -- 11/07/18

Blocks: 2, Idaho -- 11/11/18; Idaho -- 11/11/18

FG made: 6, Idaho -- 11/11/18; Idaho -- 11/11/18

FG attempts: 12, Idaho -- 11/11/18; Idaho -- 11/11/18

3FG made: 5, Idaho -- 11/11/18; Idaho -- 11/11/18

3FG attempts: 10, Idaho -- 11/11/18; Idaho -- 11/11/18

FT made: 2, San Francisco -- 11/15/18; San Francisco -- 11/15/18

FT attempts: 2, San Francisco -- 11/15/18; San Francisco -- 11/15/18

Jerome, Alyssa

Season	gp-gs	min/avg	Total		3-Point		F-Throws		Rebounds				Scoring							
			fg-fga	pct	fg-fga	pct	ft-fta	pct	off	def	tot	avg	pf	fo	ast	to	blk	stl	pts	avg
2017-18	34-1	337/9.9	28-70	.400	9-31	.290	4-6	.667	11	25	36	1.1	27	0	14	22	3	1	69	2.0
2018-19	7-0	100/14.3	9-25	.360	3-8	.375	11-15	.733	7	21	28	4.0	11	0	4	5	3	1	32	4.6
TOTAL	41-1	437/10.7	37-95	.389	12-39	.308	15-21	.714	18	46	64	1.6	38	0	18	27	6	2	101	2.5

SINGLE-GAME HIGHS [all-time ranking]:

Points: 8, at Ohio State -- 11/10/17; at Ohio State -- 11/10/17

Rebounds: 8, UC Davis -- 11/07/18; UC Davis -- 11/7/18

Assists: 2, 6 times

Steals: 1, at USC -- 1/19/18; at Hawaii -- 11/25/18

Blocks: 2, San Francisco -- 11/15/18; San Francisco -- 11/15/18; UNLV -- 12/16/17

FG made: 3, 4 times

FG attempts: 6, vs Kent State -- 11/23/17; vs Kent State -- 11/23/17

3FG made: 2, at Ohio State -- 11/10/17; at Ohio State -- 11/10/17; at Gonzaga -- 12/2/18

3FG attempts: 4, vs Kent State -- 11/23/17; vs Kent State -- 11/23/17

FT made: 4, at Hawaii -- 11/25/18

FT attempts: 6, at Hawaii -- 11/25/18

Stanford Women's Basketball Individual Career History

Moschkau, Estella

Season	gp-gs	min/avg	Total		3-Point		F-Throws		Rebounds				Scoring							
			fg-fga	pct	fg-fga	pct	ft-fa	pct	off	def	tot	avg	pf	fo	ast	to	blk	stl	pts	avg
2017-18	23-0	49/2.1	4-9	.444	3-7	.429	1-2	.500	2	2	4	0.2	4	0	2	0	0	0	12	0.5
2018-19	6-0	25/4.2	4-4	1.000	3-3	1.000	0-0	.000	1	0	1	0.2	1	0	2	5	0	2	11	1.8
TOTAL	29-0	74/2.6	8-13	.615	6-10	.600	1-2	.500	3	2	5	0.2	5	0	4	5	0	2	23	0.8

SINGLE-GAME HIGHS [all-time ranking]:

Points: 5, San Francisco -- 11/15/18; San Francisco -- 11/15/18

Rebounds: 2, at Arizona -- 1/5/18

Assists: 1, 6 times

Steals: 2, at Hawaii -- 11/25/18

FG made: 2, San Francisco -- 11/15/18; San Francisco -- 11/15/18

FG attempts: 2, 5 times

3FG made: 1, 9 times

3FG attempts: 2, CSU Bakersfield -- 11/19/17; CSU Bakersfield -- 11/19/17

FT made: 1, Arizona -- 1/28/18

FT attempts: 2, Arizona -- 1/28/18

Romano, Alexa

Season	gp-gs	min/avg	Total		3-Point		F-Throws		Rebounds				Scoring							
			fg-fga	pct	fg-fga	pct	ft-fa	pct	off	def	tot	avg	pf	fo	ast	to	blk	stl	pts	avg
2015-16	17-0	59/3.5	4-10	.400	2-5	.400	2-2	1.000	1	4	5	0.3	2	0	3	4	2	0	12	0.7
2016-17	22-0	132/6.0	8-25	.320	5-14	.357	3-6	.500	3	16	19	0.9	5	0	12	10	0	8	24	1.1
2017-18	29-8	277/9.6	28-78	.359	12-41	.293	8-11	.727	5	22	27	0.9	11	0	15	15	2	12	76	2.6
2018-19	7-0	35/5.0	3-10	.300	2-8	.250	1-1	1.000	0	2	2	0.3	4	0	1	1	0	0	9	1.3
TOTAL	75-8	503/6.7	43-123	.350	21-68	.309	14-20	.700	9	44	53	0.7	22	0	31	30	4	20	121	1.6

SINGLE-GAME HIGHS [all-time ranking]:

Points: 13, CSU Bakersfield -- 11/19/17; CSU Bakersfield -- 11/19/17; at San Francisco -- 11/29/17

Rebounds: 5, Yale -- 12/28/16

Assists: 3, Cal Poly -- 11/11/16; UNLV -- 12/16/17

Steals: 2, 4 times

Blocks: 1, 4 times

FG made: 5, vs Belmont -- 11/24/17; at San Francisco -- 11/29/17

FG attempts: 11, UC Riverside -- 11/17/17; UC Riverside -- 11/17/17

3FG made: 3, CSU Bakersfield -- 11/19/17; CSU Bakersfield -- 11/19/17; at San Francisco -- 11/29/17

3FG attempts: 7, UC Riverside -- 11/17/17; UC Riverside -- 11/17/17

FT made: 2, 6 times

FT attempts: 2, 10 times

Smith, Alanna

Season	gp-gs	min/avg	Total		3-Point		F-Throws		Rebounds				Scoring							
			fg-fga	pct	fg-fga	pct	ft-fa	pct	off	def	tot	avg	pf	fo	ast	to	blk	stl	pts	avg
2015-16	34-0	400/11.8	67-155	.432	20-60	.333	29-44	.659	28	52	80	2.4	63	1	13	43	24	5	183	5.4
2016-17	38-3	735/19.3	133-286	.465	19-60	.317	62-90	.689	66	141	207	5.4	88	4	34	42	61	25	347	9.1
2017-18	35-35	995/28.4	198-418	.474	35-116	.302	43-81	.531	92	154	246	7.0	96	2	41	88	62	45	474	13.5
2018-19	7-7	158/22.6	45-78	.577	16-33	.485	21-27	.778	12	31	43	6.1	17	1	18	20	11	10	127	18.1
TOTAL	114-45	2288/20.1	443-937	.473	90-269	.335	155-242	.640	198	378	576	5.1	264	8	106	193	158	85	1131	9.9

SINGLE-GAME HIGHS [all-time ranking]:

Points: 33, vs Ohio State -- 11/25/17

Rebounds: 16, vs Ohio State -- 11/25/17

Assists: 4, 5 times

Steals: 6, at California -- 2/17/18

Blocks: 6, vs New Mexico State -- 3/18/17

FG made: 14, vs Ohio State -- 11/25/17

FG attempts: 24, Western Illinois -- 12/18/17; at California -- 2/17/18

3FG made: 6, vs Dayton -- 11/28/15

3FG attempts: 11, at California -- 2/17/18

FT made: 7, UC Davis -- 11/07/18; UC Davis -- 11/7/18

FT attempts: 8, Cornell -- 12/19/15; at California -- 2/16/17

Stanford Women's Basketball Individual Career History

Snizek, Marta

Season	gp-gs	min/avg	Total		3-Point		F-Throws		Rebounds				Scoring							
			fg-fga	pct	fg-fga	pct	ft-fta	pct	off	def	tot	avg	pf	fo	ast	to	blk	stl	pts	avg
2015-16	35-9	656/18.7	35-99	.354	4-17	.235	28-42	.667	8	48	56	1.6	27	0	109	63	1	21	102	2.9
2016-17	38-9	948/24.9	56-149	.376	6-20	.300	54-75	.720	6	100	106	2.8	64	0	169	93	3	51	172	4.5
2017-18	35-32	971/27.7	56-156	.359	20-59	.339	61-90	.678	7	115	122	3.5	68	1	150	78	3	38	193	5.5
TOTAL	108-50	2575/23.8	147-404	.364	30-96	.313	143-207	.691	21	263	284	2.6	159	1	428	234	7	110	467	4.3

SINGLE-GAME HIGHS [all-time ranking]:

Points: 13, Arizona State -- 1/26/18; at Washington -- 2/23/18

Rebounds: 10, USC -- 12/31/17

Assists: 13, vs Washington -- 3/4/16

Steals: 6, Oregon State -- 1/8/17

Blocks: 1, 7 times

FG made: 5, Arizona State -- 1/26/18; vs Notre Dame -- 3/25/16

FG attempts: 12, vs Belmont -- 11/24/17

3FG made: 3, at Arizona State -- 1/7/18; Utah -- 2/9/18

3FG attempts: 8, vs Belmont -- 11/24/17

FT made: 6, UC Riverside -- 11/17/17; UC Riverside -- 11/17/17; vs USC -- 3/2/18

FT attempts: 9, Tennessee -- 12/16/15

Williams, Kiana

Season	gp-gs	min/avg	Total		3-Point		F-Throws		Rebounds				Scoring							
			fg-fga	pct	fg-fga	pct	ft-fta	pct	off	def	tot	avg	pf	fo	ast	to	blk	stl	pts	avg
2017-18	35-26	899/25.7	128-309	.414	71-185	.384	36-44	.818	4	54	58	1.7	38	0	67	40	5	30	363	10.4
2018-19	7-7	215/30.7	40-79	.506	20-43	.465	7-10	.700	0	15	15	2.1	6	0	30	18	0	5	107	15.3
TOTAL	42-33	1114/26.5	168-388	.433	91-228	.399	43-54	.796	4	69	73	1.7	44	0	97	58	5	35	470	11.2

SINGLE-GAME HIGHS [all-time ranking]:

Points: 26, California -- 2/15/18

Rebounds: 6, vs FGCU -- 11/23/18; Utah -- 2/9/18

Assists: 9, Idaho -- 11/11/18; Idaho -- 11/11/18

Steals: 4, California -- 2/15/18

Blocks: 1, 6 times

FG made: 9, vs Arizona State -- 3/3/18

FG attempts: 17, at Gonzaga -- 12/2/18

3FG made: 6, vs Arizona State -- 3/3/18

3FG attempts: 11, Western Illinois -- 12/18/17; at Baylor -- 12/3/17; at Oregon -- 2/4/18

FT made: 7, California -- 2/15/18

FT attempts: 9, California -- 2/15/18

Wilson, Anna

Season	gp-gs	min/avg	Total		3-Point		F-Throws		Rebounds				Scoring							
			fg-fga	pct	fg-fga	pct	ft-fta	pct	off	def	tot	avg	pf	fo	ast	to	blk	stl	pts	avg
2016-17	6-0	48/8.0	6-13	.462	4-8	.500	1-3	.333	0	6	6	1.0	4	0	5	7	0	3	17	2.8
2017-18	21-2	224/10.7	24-81	.296	20-69	.290	2-4	.500	1	22	23	1.1	22	0	8	13	1	10	70	3.3
2018-19	6-3	74/12.3	7-23	.304	4-18	.222	4-4	1.000	3	12	15	2.5	11	0	7	2	0	6	22	3.7
TOTAL	33-5	346/10.5	37-117	.316	28-95	.295	7-11	.636	4	40	44	1.3	37	0	20	22	1	19	109	3.3

SINGLE-GAME HIGHS [all-time ranking]:

Points: 21, vs Ohio State -- 11/25/17

Rebounds: 6, Western Illinois -- 12/18/17

Assists: 3, vs FGCU -- 11/23/18

Steals: 3, Western Illinois -- 12/18/17

Blocks: 1, CSU Bakersfield -- 11/19/17; CSU Bakersfield -- 11/19/17

FG made: 7, vs Ohio State -- 11/25/17

FG attempts: 17, Western Illinois -- 12/18/17

3FG made: 7, vs Ohio State -- 11/25/17

3FG attempts: 15, Western Illinois -- 12/18/17

FT made: 2, 4 times

FT attempts: 3, at Arizona -- 1/1/17

TV/RADIO ROSTER



#2
SHANNON COFFEE
 C • 6-5 • SR
 DAYTON, OHIO
 CENTERVILLE



#3
ANNA WILSON
 G • 5-9 • JR
 SEATTLE, WASH.
 BELLEVUE



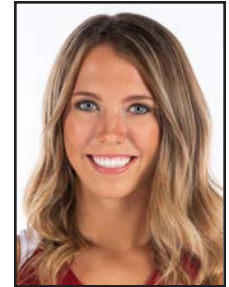
#4
NADIA FINGALL
 F • 6-3 • JR
 NAVARRE, FLA.
 CHOCTAWHATCHEE



#10
ALYSSA JEROME
 F • 6-3 • SO
 TORONTO, CANADA
 HARBORD COLLEGIATE



#11
ALANNA SMITH
 F • 6-4 • SR
 MELBOURNE, AUSTRALIA
 WESLEY COLLEGE



#12
LEXIE HULL
 F • 6-0 • FR
 SPOKANE, WASH.
 CENTRAL VALLEY



#13
MARTA SNIEZEK
 G • 5-8 • SR
 MCLEAN, VA.
 NATIONAL CATHEDRAL [D.C.]



#14
MIKAELA BREWER
 G • 5-10 • JR
 BARRIE, ONTARIO, CANADA
 INNISDALE SECONDARY



#15
MAYA DODSON
 F • 6-3 • SO
 ALPHARETTA, GA.
 ST. FRANCIS



#20
ESTELLA MOSCHKAU
 F • 6-1 • SO
 MADISON, WIS.
 EDGEWOOD



#21
DIJONAI CARRINGTON
 G • 5-11 • JR
 SAN DIEGO, CALIF.
 HORIZON CHRISTIAN



#22
ALEXA ROMANO
 G • 5-10 • SR
 ALBUQUERQUE, N.M.
 LA CUEVA



#23
KIANA WILLIAMS
 G • 5-8 • SO
 SAN ANTONIO, TEXAS
 KAREN WAGNER



#24
LACIE HULL
 F • 6-1 • FR
 SPOKANE, WASH.
 CENTRAL VALLEY



#54
JENNA BROWN
 G • 5-10 • FR
 ATLANTA, GA.
 THE LOVETT SCHOOL



TARA VANDERVEER
 HEAD COACH
 33RD YEAR



KATE PAYE
 ASSOCIATE HEAD COACH
 12TH YEAR



TEMPIE BROWN
 ASSISTANT COACH
 SIXTH YEAR



LINDY LA ROCQUE
 ASSISTANT COACH
 SECOND YEAR