



GOSTANFORD.COM • #GOSTANFORD



2018-19 SCHEDULE AND RESULTS

NOVEMBER

1	Vanguard (Ex.)	W, 87-36
7	UC Davis	W, 71-43
11	Idaho	W, 115-71
15	San Francisco	W, 96-62
18	Ohio State (P12N)	canceled
23	vs. FGCU (1)	W, 88-65
24	vs. American (1)	W, 71-49
25	at Hawaii (1)	W, 81-59

DECEMBER

2	at Gonzaga	L, 73-79
15	#3/4 Baylor (P12N)	W, 68-63
18	at #9/8 Tennessee (SECN)	W, 95-85
21	at Buffalo (ESPN+)	W, 62-55
29	CSUN	W, 69-43

JANUARY

4	USC * (P12N)	W, 72-64
6	UCLA * (P12N)	1 p.m.
11	at Arizona State * (P12N)	7 p.m. MT
13	at Arizona * (P12N)	noon MT
18	Washington * (P12N)	7 p.m.
20	Washington State * (P12N)	noon
25	at Colorado * (P12N)	7 p.m. MT
27	at Utah *	noon MT
31	at California * (P12N)	8 p.m.

FEBRUARY

2	California * (P12N)	4 p.m.
8	Oregon State * (P12N)	6 p.m.
10	Oregon * (ESPN2)	1 p.m.
15	at UCLA * (P12N)	6 p.m.
17	at USC * (P12N)	noon
22	Arizona *	7 p.m.
24	Arizona State * (P12N)	1 p.m.

MARCH

1	at Washington State * (P12N)	7 p.m.
3	at Washington * (P12N)	2 p.m.
7-10	Pac-12 Tournament (2)	TBD

(1) – Rainbow Wahine Showdown; Honolulu, Hawaii

(2) – Pac-12 Tournament; Las Vegas, Nev.

\* – Pac-12 game;

All times local and subject to change;

Home games in Bold;

[#/#] - Indicates national ranking (AP/USA Today)

(P12N) - Game televised on Pac-12 Networks

(ESPN2/SECN) - Game televised on ESPN family of networks

Athletic Communications

Director ..... John Cantalupi  
 Cell Phone ..... (650) 924-8304  
 E-Mail ..... johncan@stanford.edu

**THE GAME:** No. 6 Stanford (11-1, 1-0) wraps up its conference-opening weekend at home against UCLA (9-5, 2-0) on Sunday, Jan. 6 at 1 p.m. Anne Marie Anderson and Layshia Clarendon have the call on Pac-12 Networks and Kevin Danna will handle the radio broadcast on GoStanford.com.

**THE RUNDOWN:** Stanford is 94-6 in its last 100 Pac-12 home games ... The Cardinal's 178 conference wins the past 11 seasons are tied with Green Bay for the most in the nation ... Alanna Smith's 30-point, 13-rebound, five-assist, three-block performance at Buffalo was just the fourth for a player in a true road game since 2000 ... DiJonai Carrington's 33-point, 13-rebound, four 3-pointer effort against Tennessee was just the second for a player in the past 20 years against a ranked opponent ... The Cardinal has won 17 in a row at home ... Stanford is the only school in the nation with a pair of top-10 wins this season ... Stanford's 95 points against the Lady Vols are a program record on the road against a top-10 team ... The Cardinal is 26th in the country in scoring offense (80.1) and 20th in field goal percentage (.463) ... Stanford is 14th nationally, averaging 9.8 3-point makes per game, and 19th in 3-point percentage, making 38.0 percent ... Alanna Smith is the only player in the nation shooting better than 55 percent from the floor and 45 percent from behind the arc and one of two averaging 18.9 points, 6.9 rebounds, 2.6 assists and 1.9 blocks per game ... Haley Jones, the nation's consensus No. 1 recruit, announced her commitment on Nov. 28, the first top player to sign with Stanford since Chiney Ogwumike in Nov. 2009.

STANFORD AT A GLANCE

Game 13

Overall Record .....	11-1
Pac-12 Record .....	1-0
Home Record .....	6-0
Road Record .....	3-1
Neutral Record .....	2-0

HEAD COACH TARA VANDERVEER

Stanford Record (33rd year) .....	895-192
Career Record (40th year) .....	1,047-243
All-Time vs. UCLA .....	60-14

SERIES HISTORY

All-Time vs. UCLA .....	60-25
At Stanford .....	28-10
At UCLA .....	23-13
Streak .....	UCLA, 1
Last Stanford Win .....	12/29/17 (76-65 @ STAN)
Last UCLA Win .....	1/21/18 (64-53 @ UCLA)

**VS. UCLA:** Stanford is 60-25 all-time against UCLA dating back to Feb. 11, 1978, 28-10 against the Bruins at home and has won 17 of the last 18 in Maples Pavilion. UCLA's only win on The Farm this millennium was on Feb. 7, 2017, 85-76, one game after Tara VanDerveer won her 1,000th career game. The Cardinal snapped a six-game losing streak to ranked teams when it beat No. 11 UCLA in Maples last season, 76-65, on Dec. 29, 2017. The Bruins won in Westwood on Jan. 21, 2018, 64-53.

STANFORD PROBABLE STARTERS

No.	Player	Pos.	Ht.	Yr.	PPG	RPG	APG
4	Nadia Fingall	F	6-3	Jr.	8.0	4.9	1.7
11	Alanna Smith	F	6-4	Sr.	18.9	6.9	1.9 (BPG)
21	DiJonai Carrington	G	5-11	Jr.	11.3	6.8	1.8
23	Kiana Williams	G	5-8	So.	13.8	2.4	4.5
24	Lacie Hull	F	6-1	Fr.	5.2	3.3	1.7

STANFORD OFF THE BENCH

No.	Player	Pos.	Ht.	Yr.	PPG	RPG	APG
2	Shannon Coffee	C	6-5	Sr.	2.2	1.3	0.4
3	Anna Wilson	G	5-9	Jr.	2.9	1.9	0.9
10	Alyssa Jerome	F	6-3	So.	3.1	3.0	0.7
12	Lexie Hull	F	6-0	Fr.	10.7	7.0	2.7 (SPG)
13	Marta Sniezek	G	5-8	Sr.	--	--	--
14	Mikaela Brewer	G	5-10	Jr.	1.3	0.5	0.0
15	Maya Dodson	F	6-3	So.	9.0	4.2	1.7 (BPG)
20	Estella Moschkau	F	6-1	So.	1.8	0.4	0.3
22	Alexa Romano	G	5-10	Sr.	1.1	0.3	0.2
54	Jenna Brown	G	5-10	Fr.	2.2	1.8	1.6

**QUICK FACTS**

**The University**

Location ..... Stanford, Calif.  
 Founded..... 1891  
 Enrollment..... 16,424 (7,056 undergraduate)  
 Nickname..... Cardinal  
 Colors..... Cardinal and White  
 Affiliation ..... NCAA Division I  
 Conference ..... Pac-12  
 President ..... Marc Tessier-Lavigne  
 Provost..... Persis Drell  
 Director of Athletics..... Bernard Muir  
 Faculty Representative ..... Jeff Koseff  
 Senior Women's Administrator..... Beth Goode  
 Athletic Department Phone ..... 650-723-4591  
 Ticket Office Phone ..... 800-STANFORD  
 Home Facility..... Maples Pavilion  
 Capacity ..... 7,233  
 Web Site ..... www.gostanford.com

**Stanford Women's Basketball History**

First Year ..... 1974-75 (45 seasons)  
 All-Time Record ..... 1,071-330 (.764)  
 All-Time Pac-12 (since 1986-87) ..... 501-75 (.870)  
 NCAA Championships ..... 2 (1990, 1992)  
 NCAA Tournament Appearances ..... 32 (86-30)  
 Last NCAA Tournament Appearance ..... 2018  
 NCAA Final Four Appearances ..... 13  
 Last NCAA Final Four Appearance ..... 2017

**Staff Information**

Head Coach ..... Tara VanDerveer (33rd season)  
 Alma Mater ..... Indiana, 1975  
 Stanford Record ..... 895-192/33 seasons  
 Career Record..... 1,047-243/40 seasons  
 Associate Head Coach..... Kate Paye (12th season)  
 Alma Mater ..... Stanford, 1995  
 Assistant Coach ..... Tempie Brown (sixth season)  
 Alma Mater ..... Michigan, 1990  
 Assistant Coach ..... Lindy La Rocque (second season)  
 Alma Mater ..... Stanford, 2012  
 Operations ..... Eileen Roche (Ohio Wesleyan '81)  
 Administrator..... Amy Tucker (Ohio State, '82)  
 Video Coordinator ..... Hana Potter (Washington St. '14)  
 Athletic Trainer ..... Katelin Knox (Santa Clara '09)  
 Sports Performance ..... Brittany Keil (Holy Cross '07)  
 Basketball Office Phone..... (650) 723-0284

**Team Information**

Letterwinners Returning/Lost .....12/2  
 Starters Returning/Lost .....3/2  
 Newcomers..... 3  
 2017-18 Record.....24-11  
 Home .....14-2  
 Away .....6-5  
 Neutral.....4-4  
 2017-18 Conference Record .....14-3  
 Finish ..... 2nd

**HEADING INTO CONFERENCE »**

- Stanford entered conference play with a 10-1 record (.909), its best 11-game start since it began the 2013-14 season 22-1. The Cardinal started the year with six consecutive victories, something it hadn't done since winning its first 11 games in 2012-13.
- This is the first season since 2013-14 that Stanford suffered just one nonconference defeat.
- The Cardinal's Nov. 18 home contest against Ohio State was canceled due to smoke from the devastating wildfires in Butte County that had compromised the air quality throughout the Bay Area.
- Stanford is currently No. 6 in the AP Top 25 and No. 3 in the NCAA RPI.
- Stanford moved to 30-3 in Pac-12 openers with its 72-64 win over USC on Friday night. Its last such loss came at Arizona State (74-68) on Jan. 6, 2000.
- Since 2007-08, the Cardinal owns a conference home record of 94-6 and a Pac-12 road record of 84-14.
- Stanford's 178 conference wins the past 11 seasons are tied with Green Bay for the most in the nation.
- Stanford's all-time Pac-12 record is 501-75 and 150 wins clear of the next closest team (UW - 336).

**RECORDS SET ON ROCKY TOP »**

- On the 30th anniversary of the first meeting in their storied rivalry, Stanford went on the road and beat then-No. 9 Tennessee in Knoxville, 95-85, on Dec. 18.
- In the first top-10 matchup between the schools since 2013, the Cardinal collected its third win against the Lady Vols in Thompson-Boling Arena. Its previous road victories in Knoxville came on Dec. 22, 2012 (73-60) and Dec. 15, 1996 (82-65).
- Stanford shot 14-of-24 (.583) from 3-point range, an opponent record for Thompson-Boling Arena and a record-tying number of makes from deep against the Lady Vols all-time.
- The Cardinal's 95 points were the most against Tennessee in Knoxville in 13 seasons and just two shy of the opponent record in Thompson-Boling Arena. Texas beat the Lady Vols 97-78 on Dec. 9, 1987.
- Stanford shot 55 percent overall (33-of-60) to score its 95 points, a program record for scoring on the road against a top-10 team.
- DiJonai Carrington led five Cardinal in double figures with a career-high 33 points and 13-rebounds for her third career double-double. Carrington was 11-of-15 (.733) from the floor and 4-of-5 (.800) from deep and became just the second player in the last 20 years to have 33 points, 13 rebounds and four made 3-pointers against a ranked opponent. Missouri's Evan Unrau had 40/15/4 against No. 8 Kansas State on Feb. 22, 2014, a game that went into double-overtime.

**RESUME BUILDERS »**

- Coupled with a Dec. 15 68-63 home victory over then-No. 3 Baylor, Stanford beat a pair of top-10 teams in the span of four days, something it last did eight years ago when it beat No. 4 Xavier, 89-52, on Dec. 28, 2010 and No. 1 UConn, 71-59, on Dec. 30, 2010 to end the Huskies' then-record 90-game winning streak. Both of those victories were at home.
- Stanford is the only school in the nation with a pair of top-10 wins.
- The win against the Lady Bears was the Cardinal's first in the regular season against a top-five team since it ended No. 1 UConn's 47-game winning streak in overtime, 88-86, on Nov. 17, 2014.
- Stanford is now 9-1 in its last 10 home game against top-five opponents.
- The 6-foot-5 Shannon Coffee set season highs with nine points and 19 minutes and made three of her four 3-point attempts against Baylor. The senior has made 12 from deep in her career and seven have come against Baylor. She was 4-of-8 last season in an 81-57 loss in Waco.

**2018-19 STANFORD ROSTER**

No.	Player	Pos.	Ht.	Yr.	Major	Hometown (High School)
2	Shannon Coffee	C	6-5	Sr.	Human Biology	Dayton, Ohio (Centerville)
3	Anna Wilson	G	5-9	Jr.	Art Practice	Seattle, Wash. (Bellevue)
4	Nadia Fingall	F	6-3	Jr.	Human Biology	Navarre, Fla. (Choctawhatchee)
10	Alyssa Jerome	F	6-3	So.	Undeclared	Toronto, Ontario, Canada (Harbord Collegiate)
11	Alanna Smith	F	6-4	Sr.	Psychology	Melbourne, Victoria, Australia (Wesley College)
12	Lexie Hull	F	6-0	Fr.	Undeclared	Spokane, Wash. (Central Valley)
13	Marta Sniezek	G	5-8	Sr.	American Studies	McLean, Va. (National Cathedral [D.C.])
14	Mikaela Brewer	G	5-10	Jr.	Human Biology	Barrie, Ontario, Canada (Innisdale Secondary)
15	Maya Dodson	F	6-3	So.	Undeclared	Alpharetta, Ga. (St. Francis)
20	Estella Moschkau	F	6-1	So.	Undeclared	Madison, Wis. (Edgewood)
21	DiJonai Carrington	G	5-11	Jr.	Psychology • African & African American Studies	San Diego, Calif. (Horizon Christian)
22	Alexa Romano	G	5-10	Sr.	Anthropology	Albuquerque, N.M. (La Cueva)
23	Kiana Williams	G	5-8	So.	Undeclared	San Antonio, Texas (Karen Wagner)
24	Lacie Hull	F	6-1	Fr.	Undeclared	Spokane, Wash. (Central Valley)
54	Jenna Brown	G	5-10	Fr.	Undeclared	Atlanta, Ga. (The Lovett School)
<b>TEMPIE</b> Brown (TEMP-ee) <b>DIJONAI</b> Carrington (dijon-NAY) Nadia <b>FINGALL</b> (FING-gull)						Estella <b>MOSCHKAU</b> (MOSS-cow) <b>ALANNA</b> Smith (uh-LAN-uh) Marta <b>SNIEZEK</b> (SNEEZE-ick) <b>TARA VANDERVEER</b> (TAR-uh van-DER-veer)

**STANFORD'S RECORD WHEN**

Category	H	R	N	O
Scoring First	4-0	3-1	1-0	8-1
Opponent Scores First	2-0	0-0	1-0	3-0
Lead at Half	5-0	3-0	2-0	10-0
Trail at Half	1-0	0-1	0-0	1-1
Tied at Half	0-0	0-0	0-0	0-0
Overtime	0-0	0-0	0-0	0-0
vs. Top 25	1-0	1-0	0-0	2-0
Decided by 1-4 Points	0-0	0-0	0-0	0-0
Decided by 5-9 Points	2-0	1-1	0-0	3-1
Decided by 10+ Points	4-0	2-0	2-0	8-0
Scoring 100+	1-0	0-0	0-0	1-0
Scoring 90-99	1-0	1-0	0-0	2-0
Scoring 80-89	0-0	1-0	1-0	2-0
Scoring 70-79	2-0	0-1	1-0	3-1
Scoring 60-69	2-0	1-0	0-0	3-0
Scoring 50-59	0-0	0-0	0-0	0-0
Scoring 40-49	0-0	0-0	0-0	0-0
Opp. Scoring 90-99	0-0	0-0	0-0	0-0
Opp. Scoring 80-89	0-0	1-0	0-0	1-0
Opp. Scoring 70-79	1-0	0-1	0-0	1-1
Opp. Scoring 60-69	3-0	0-0	1-0	4-0
Opp. Scoring 50-59	0-0	2-0	0-0	2-0
Opp. 49 or Fewer	2-0	0-0	1-0	3-0
50%-plus FG Pct.	2-0	2-0	1-0	5-0
40-49.9% FG Pct.	3-0	0-1	1-0	4-1
39.9%-minus FG Pct.	1-0	1-0	0-0	2-0
Opp. 50%-plus FG Pct.	0-0	0-1	0-0	0-1
Opp. 40-49.9% FG Pct.	1-0	2-0	0-0	3-0
Opp. 39.9%-minus	5-0	1-0	2-0	8-0
Better FG% than Opp.	6-0	3-0	2-0	11-0
FG% is Equal	0-0	0-0	0-0	0-0
Opp. Better FG%	0-0	0-1	0-0	0-1
80%-plus FT Pct.	0-0	0-0	0-0	0-0
70-79% FT Pct.	2-0	3-0	1-0	6-0
69%-minus FT Pct.	4-0	0-1	1-0	5-1
Better FT% than Opp.	4-0	2-0	0-0	6-0
FT% is Equal	0-0	0-0	0-0	0-0
Opp. Better FT%	2-0	1-1	2-0	5-1
Outrebounding Opp.	4-0	3-0	2-0	9-0
Rebounds are Equal	0-0	0-0	0-0	0-0
Outrebounded by Opp.	2-0	0-1	0-0	2-1
Fewer TO than Opp.	4-0	1-1	1-0	6-1
Turnovers are Equal	0-0	0-0	0-0	0-0
More TO than Opp.	2-0	2-0	1-0	5-0
6 in Double Figures	1-0	0-0	0-0	1-0
5 in Double Figures	0-0	1-0	0-0	1-0
4 in Double Figures	1-0	0-0	0-0	1-0
3 in Double Figures	4-0	0-1	2-0	6-1
2 in Double Figures	0-0	2-0	0-0	2-0
1 in Double Figures	0-0	0-0	0-0	0-0
Bench Scores More	2-0	3-0	1-0	6-0
Opp. Bench Scrs. More	3-0	0-1	1-0	4-1
Wearing Black	0-0	3-1	1-0	4-1
Wearing White	5-0	0-0	1-0	6-0
Wearing Cardinal	0-0	0-0	0-0	0-0

- Coupled with Alanna Smith's 5-of-9 effort from behind the arc, the Cardinal's two tallest players were a combined 8-of-13 (.615) from distance.
- Baylor, which entered the game leading the nation in field goal percentage (.557), shot just 34.9 percent (22-of-63) against the Cardinal, its lowest since losing 88-69 to Notre Dame in the Elite Eight on March 31, 2014 (.338).
- Kalani Brown (16.4 ppg) and Lauren Cox (12.3 ppg), who came in averaging nearly 30 combined points per game, together went for just seven points on just 3-of-11 shooting (.273). Brown came into the day leading the NCAA's active players in field goal percentage (.648) made only two of her seven attempts from the floor, the third-lowest percentage of her career when attempting at least five shots.

**HOME COOKIN' »**

- Stanford is in the midst of a 17-game winning streak in Maples Pavilion, the eighth longest active stretch in the country and the program's longest since it went 28 straight from Jan. 18, 2013 until an 87-81 overtime loss to No. 10 Texas on Nov. 20, 2014.
- Last season, the Cardinal was the only Pac-12 team undefeated at home in conference (9-0).
- Stanford's last home loss was to No. 7 Tennessee on Dec. 21, 2017 (83-71) and its last conference loss at home was to No. 15 UCLA on Feb. 6, 2017 (85-76).
- The Cardinal hasn't lost a home game to an unranked Pac-12 team since Feb. 22, 2015, when it was beaten by Cal, 63-53.

**LONE LOSS »**

- The Cardinal's loss at Gonzaga on Dec. 2 was its third to a WCC team in the nonconference in the last four seasons. Gonzaga won at Stanford, 68-63, on Nov. 18, 2016 and Santa Clara beat the Cardinal in Maples on Nov. 23, 2015, 61-58.
- Gonzaga shot 54.2 percent from the floor (26-of-48) in its most recent victory, the best for a Stanford opponent since No. 22 DePaul made 59.6 percent (31-of-52) in a 91-71 win on Dec. 16, 2010.

**MARKED OFFENSIVE IMPROVEMENT »**

- The Cardinal is 26th in the country in scoring offense (80.1) and 23rd in scoring margin (+18.6).
- Stanford hasn't averaged more than 75.0 points per game since 2013-14 and has averaged 68.7 (2017-18), 68.8 (2015-16) and 69.3 (2014-15) in three of the last four years. Those are three of the five lowest scoring offenses for a Tara VanDerveer team at Stanford, behind 1985-86 (66.6) and 1986-87 (67.8).
- Stanford is 20th nationally in field goal percentage (.463) and 25th in assist-to-turnover ratio (1.22). Those categories are just a couple of many where the Cardinal has seen a marked improvement year-over-year. Last season, Stanford was 87th in field goal percentage (.424) and 126th in assist-to-turnover ratio (0.93).

**SHARP SHOOTERS »**

- Stanford is 14th in the country, averaging 9.8 3-point makes per game and 19th in 3-point percentage, making 38.0 percent.
- Stanford's 16 3-pointers on Nov. 11 against Idaho tied a program single-game record also achieved at UCLA on Feb. 24, 2002 and at Washington on Feb. 24, 2001.
- Entering the season, Stanford had made 14 3-pointers in a game 16 times in 1,389 games (1.2 percent). This year's Cardinal has already done it three times in 12 games against Idaho (16), San Francisco (15) and Tennessee (14).
- The Cardinal made 31.9 percent of its attempts from behind the arc last season, the second-worst percentage in program history. Stanford also was a program-low 42.4 percent from the floor overall in 2017-18.
- Stanford won that game against Idaho 115-71, its fifth-highest point total ever and most since tying a school record with 122 against Cal State Fullerton on Dec. 10, 1994.

**FOUR TO THE FARM »**

- Stanford bolstered an already strong recruiting class for next season with the addition of the nation's consensus No. 1 recruit, Haley Jones (Santa Cruz, Calif./Archbishop Mitty), who committed on Nov. 28.
- Jones joined the earlier signings of top-50, five-star talents Fran Belibi (Aurora, Colo./Regis Jesuit), Hannah Jump (Los Altos Hills, Calif./Pinewood School) and Ashten Prechtel (Colorado Springs, Colo./Discovery Canyon) in Stanford's class, which is ranked second nationally by espnW HoopGurlz.
- Jones is the first No. 1 prospect to sign with Stanford since Chiney Ogwumike came to The Farm as the top player in the country in Nov. 2009. She is also the first woman to have her college commitment covered by ESPN and SportsCenter.

**SO INTERNATIONAL »**

- Alanna Smith, Jenna Brown and Alyssa Jerome all represented their countries across the globe in various tournaments this summer.

**VANDERVEER'S HEAD COACHING CAREER**

Year	School	Overall	Post.
1978-79	Idaho	17-8	
1979-80	Idaho	25-6	AIAW Championships
1980-81	Ohio State	17-15	---
1981-82	Ohio State	20-7	NCAA First Round
1982-83	Ohio State	23-5	---
1983-84	Ohio State	22-7	NCAA First Round
1984-85	Ohio State	28-3	NCAA Elite 8
1985-86	Stanford	13-15	---
1986-87	Stanford	14-14	---
1987-88	Stanford	27-5	NCAA Sweet 16
1988-89	Stanford	28-3	NCAA Elite 8
1989-90	Stanford	32-1	NCAA Champions
1990-91	Stanford	26-6	NCAA Final Four
1991-92	Stanford	30-3	NCAA Champions
1992-93	Stanford	26-6	NCAA Sweet 16
1993-94	Stanford	25-6	NCAA Elite 8
1994-95	Stanford	30-3	NCAA Final Four
1995-96	Stanford	---	USA Head Coach
1996-97	Stanford	34-2	NCAA Final Four
1997-98	Stanford	21-6	NCAA First Round
1998-99	Stanford	18-12	NCAA First Round
1999-00	Stanford	21-9	NCAA Second Round
2000-01	Stanford	19-11	NCAA Second Round
2001-02	Stanford	32-3	NCAA Sweet 16
2002-03	Stanford	27-5	NCAA Second Round
2003-04	Stanford	27-7	NCAA Elite 8
2004-05	Stanford	32-3	NCAA Elite 8
2005-06	Stanford	26-8	NCAA Elite 8
2006-07	Stanford	29-5	NCAA Second Round
2007-08	Stanford	35-4	NCAA Runner-Up
2008-09	Stanford	33-5	NCAA Final Four
2009-10	Stanford	36-2	NCAA Runner-Up
2010-11	Stanford	33-3	NCAA Final Four
2011-12	Stanford	35-2	NCAA Final Four
2012-13	Stanford	33-3	NCAA Sweet 16
2013-14	Stanford	33-4	NCAA Final Four
2014-15	Stanford	26-10	NCAA Sweet 16
2015-16	Stanford	27-8	NCAA Elite 8
2016-17	Stanford	32-6	NCAA Final Four
2017-18	Stanford	24-11	NCAA Sweet 16
2018-19	Stanford	10-1	

**1,047-243****COACHING HIGHLIGHTS**

- The second-winningest coach in women's college basketball history and was the second to reach 1,000 career wins (Feb. 3, 2017 vs. USC).
- Possesses the sixth-highest career winning percentage (.811) among Division I women's basketball coaches all-time.

**HONORS AND AWARDS**

- Naismith Memorial Basketball Hall of Fame ('11)
- Women's Basketball Hall of Fame ('02)
- Two NCAA Championships (1990, 1992)
- Head of the 1996 U.S. Olympic Team (Gold)
- 60-0 record with USA Olympic Team in 1995-96
- 88-8 record (.917) as USA Basketball Head Coach
- 12 NCAA Final Fours
- 22 regular-season Pac-12 titles
- Four-time National Coach of the Year
- 15-time Pac-12 Coach of the Year
- Two-time Big Ten Coach of the Year

- Smith, the program's first international student, became the sixth Stanford player to appear in a FIBA World Cup in helping Australia to a silver medal in late September. The senior was one of two Stanford players at the tournament in Tenerife, Spain along with alumna Nneka Ogwumike (United States) and was a late arrival to campus for the fall quarter. Classes started on September 24.
- It was the 22-year-old's second go-around with the Senior Women's National Team. She made her debut and won silver at the 2017 FIBA Asia Cup in Bangalore, India and was one of two Australian players to score in double figures, averaging 10.8 points on 58.3 percent shooting and 5.3 rebounds.
- Brown and the USA Basketball U18 National Team won gold at the FIBA Americas U18 Championship in Mexico City in early August. The freshman averaged 7.5 points on 57.1 percent shooting, 2.8 assists and 2.3 rebounds in six games. She had her best performance in the semifinals against Colombia, going for a team-high 17 points on 6-of-7 shooting, including hitting three of her four 3-point attempts.
- Jerome was the youngest player on Canada's Senior Women's National Team roster that participated in a four-game exhibition series in China and Japan from August 1-7.

**FROM DOWN UNDER »**

- Alanna Smith is on a laundry of preseason watch lists, including the Naismith Trophy, Wade Trophy, John R. Wooden Award, Katrina McClain Award and Senior CLASS Award and also was selected to the preseason All-Pac-12 Team as voted on by the media who regularly cover the conference.
- The espnW, USBWA and Pac-12 Player of the Week from Dec. 17, this season Smith is shooting 55.7 percent from the field (83-of-149), 47.0 percent from behind the arc (31-of-66) and averaging a team-high 18.9 points per game to go with 6.9 rebounds.
- She is the only player in the nation shooting better than 55 percent from the floor and 45 percent from deep using NCAA minimums of five made field goals per game and two made 3-pointers per game.
- Smith is also one of two players in the country averaging 18.9 points, 6.9 rebounds, 2.6 assists and 1.9 blocks per game this season (Bella Alarie - Princeton).
- Smith is third in the conference and 37th in the country in field goal percentage, third in the Pac-12 and 16th in the country in 3-point percentage, seventh in the league and 41st nationally in scoring.
- She is 31st in school history in scoring (1,231), fifth in blocks (170) and one of 18 players in the NCAA with multiple 30-point performances this season.
- Smith has made 105 career 3-pointers, more than any other player her height since 2015-16. Six-foot-4 Courtney Zezza on Saint Francis has made 87 over the past four years.
- The senior had 30 points, 13 rebounds five assists and three blocks in a 62-55 win at Buffalo on Dec. 21 to become just the fourth player since 2000 to put together a line of 30/13/5/3 in a true road game.
- Jennie Simms had 41/13/6/3 for Old Dominion against Florida Atlantic on Feb. 4, 2017, Jerica Coley had 30/14/5/4 for FIU against South Florida on March 17, 2012 and Jessica Davenport had 34/16/6/3 for Ohio State against Iowa on Jan. 12, 2006.

**WATCH WILLIAMS »**

- Kiana Williams is also on a handful of watch lists for the Naismith Trophy, John R. Wooden Award and Ann Meyers Drysdale Award.
- The sophomore is second on the team in scoring (13.8 points per game) and makes an average of 2.58 3-pointers per outing, good for fifth in the league. Her 71 made triples a year ago are the second most for a Stanford freshman in program history.
- Williams is also averaging 4.5 assists per game, which is 10th in the conference. No Stanford player has averaged 4.5 assists in a season since Jeanette Pohlen in 2010-11 (4.8).

**VANDERVEER'S CAREER MILESTONES**

<b>Win #1</b>	Dec. 1, 1978 Idaho vs. Northern Montana, 70-68	<b>Win #1 at Stanford</b>	Nov. 22, 1985 vs. Hawaii, 68-65
<b>Win #100</b>	Feb. 27, 1983 Ohio State vs. Michigan, 74-60	<b>Win #100 at Stanford</b>	Jan. 27, 1990 vs. Arizona State, 90-63
<b>Win #200</b>	Feb. 12, 1988 Stanford vs. Washington, 70-66	<b>Win #200 at Stanford</b>	Dec. 18, 1993 vs. SW Missouri St., 74-63
<b>Win #300</b>	Dec. 20, 1991 Stanford vs. Southern Illinois, 82-63	<b>Win #300 at Stanford</b>	Feb. 14, 1998 vs. USC, 91-63
<b>Win #400</b>	March 16, 1995 Stanford vs. UC Irvine (NCAA), 88-55	<b>Win #400 at Stanford</b>	Nov. 30, 2002 vs. Kansas State, 63-57
<b>Win #500</b>	Nov. 26, 2000 Stanford vs. Pacific, 73-65	<b>Win #500 at Stanford</b>	Feb. 11, 2006 at California, 55-46
<b>Win #600</b>	March 20, 2004 Stanford vs. Missouri, 68-44	<b>Win #600 at Stanford</b>	March 14, 2009 vs. UCLA, 73-47 (at Los Angeles, Calif.)
<b>Win #700</b>	Dec. 28, 2007 Stanford vs. Washington State, 105-47	<b>Win #700 at Stanford</b>	Feb. 25, 2012 vs. Utah, 69-42
<b>Win #800</b>	Dec. 22, 2010 Stanford at San Francisco, 100-45	<b>Win #800 at Stanford</b>	March 21, 2015 vs. CSUN, 73-60
<b>Win #900</b>	Nov. 27, 2013 Stanford vs. FGCU, 83-59 (Puerto Vallarta, Mexico)		
<b>Win #1,000</b>	Feb. 3, 2017 Stanford vs. USC, 58-42		



**IN THE POLLS**

**ASSOCIATED PRESS TOP 25**  
(Released December 31)

School	Record	Points
1 Connecticut (31)	11-0	775
2 Notre Dame	12-1	741
3 Louisville	12-0	714
4 Maryland	12-0	645
5 Oregon	11-1	641
<b>6 Stanford</b>	<b>10-1</b>	<b>622</b>
7 Mississippi State	12-1	586
8 Baylor	8-1	584
9 North Carolina State	13-0	527
10 Tennessee	11-1	499
11 Oregon State	10-2	452
12 Minnesota	12-0	427
13 Texas	10-2	402
14 Syracuse	11-2	369
15 Michigan State	11-1	304
16 Kentucky	13-1	295
17 Gonzaga	12-1	234
18 California	9-2	201
19 Iowa	9-3	185
20 Marquette	10-3	183
21 Texas A&M	11-2	173
22 Arizona State	9-3	97
23 South Carolina	8-4	76
24 DePaul	9-4	72
25 Iowa State	10-2	66

**OTHERS RECEIVING VOTES:** Virginia Tech 59; Florida State 52; Utah 32; Miami (FL) 23; Arizona 15; Indiana 11; South Dakota 7; Auburn 4; Central Michigan 1; South Dakota State 1.

**USA TODAY COACHES TOP 25**  
(Released December 31)

School	Record	Points
1 Connecticut (31)	11-0	775
2 Notre Dame	12-1	736
3 Louisville	12-0	716
4 Maryland	12-0	668
5 Oregon	11-1	646
6 Mississippi State	12-1	595
7 Baylor	8-1	590
<b>8 Stanford</b>	<b>10-1</b>	<b>583</b>
9 North Carolina State	13-0	532
10 Tennessee	11-1	502
11 Oregon State	10-2	442
12 Texas	10-2	419
13 Minnesota	12-0	370
14 Syracuse	11-2	367
15 Kentucky	13-1	310
16 Marquette	10-3	255
17 Michigan State	11-1	249
18 Gonzaga	12-1	246
19 California	9-2	210
20 Iowa	9-3	193
21 Texas A&M	11-2	126
22 Arizona State	9-3	116
23 Florida State	12-1	110
24 DePaul	9-4	81
25 Virginia Tech	13-0	67

**OTHERS RECEIVING VOTES:** Iowa State 32; Miami (FL) 30; South Carolina 26; UAB 18; South Alabama 13; Indiana 9; UCF 9; West Virginia 9; Missouri 8; USC 5; New Mexico 4; Central Michigan 2; Arizona 2; Tulane 2; South Dakota 2.

**INCREASED CONTRIBUTIONS »**

- Six-foot-3 posts Nadia Fingall and Maya Dodson have played major roles in Stanford's 11-1 start.
- A junior, Fingall has started each game and is averaging 8.0 points and 4.9 rebounds. She's shooting 50.0 percent from the field (40-of-80) and dropped in a career-high 24 points on 11-of-14 shooting in Stanford's 88-65 win against FGCU in Hawaii on Nov. 23 to go along with another personal best five assists. Fingall averaged 3.3 points on 44.6 percent shooting and 3.1 rebounds a year ago.
- Dodson similarly has upped her game as a sophomore and is scoring 9.0 points on 54.3 percent shooting from the floor (44-of-81) and is second in the conference in blocks per game (1.73). As a freshman, Dodson scored 3.5 points per game on 49.5 percent shooting.
- Dodson, who has come on as a sub in 11 games thus far, is the Pac-12's second-leading scorer off the bench. Oregon State's Kat Tudor has appeared off the bench in 12 of 13 games for the Beavers and is averaging 12.2 points in those appearances.

**CARRINGTON CLUTCH »**

- DiJonai Carrington has pulled down 10 or more rebounds in three of the last four games and is averaging 13.3 points and 7.9 rebounds in her last eight, one of five Pac-12 players with those numbers since Thanksgiving (Kristine Anigwe, Megan Huff, Michaela Onyenwere, Ruthy Hebard).

**TWIN TREES »**

- Sisters Lexie (25.7 minutes per game) and Lacie Hull (24.9 minutes per game) are Stanford's second and fourth most utilized players in terms of minutes played.
- Lexie, who has missed the past nine games with a left foot injury, started the season's first three games and averaged 10.7 points, 7.0 rebounds and 2.7 steals.
- Lacie has started each of Stanford's last six games, averaged 7.2 points and 3.8 rebounds and earned Pac-12 Freshman of the Week honors on Dec. 24.
- Her seven steals on Nov. 24 against American were the most for a Stanford player since Candice Wiggins had the same number in a win over Old Dominion on Nov. 24, 2007.

**STANFORD BY THE NUMBERS**

DOUBLE-DOUBLES	2018-19	CAREER	LED IN REBOUNDING (+TIES)	2018-19	CAREER
Alanna Smith	2	12	Alanna Smith	7	24
DiJonai Carrington	1	3	DiJonai Carrington	3	11
Lexie Hull	1	1	Nadia Fingall	2	7
			Marta Sniezek	0	4
			Lexie Hull	1	1
			Kiana Williams	0	1
DOUBLE-FIGURE POINTS	2018-19	CAREER	LED IN ASSISTS (+TIES)	2018-19	CAREER
Alanna Smith	11	56	Marta Sniezek	0	61
Kiana Williams	8	27	Kiana Williams	8	14
DiJonai Carrington	7	20	DiJonai Carrington	1	6
Nadia Fingall	4	15	Nadia Fingall	1	3
Marta Sniezek	0	9	Jenna Brown	1	1
Alexa Romano	0	3	Maya Dodson	1	1
Anna Wilson	1	4	Lacie Hull	1	1
Shannon Coffee	0	2	Alyssa Jerome	0	1
Maya Dodson	5	7	Alanna Smith	0	1
Lacie Hull	2	2	Anna Wilson	0	1
Lexie Hull	2	2			
20-PLUS POINTS GAMES	2018-19	CAREER	<b>STANFORD SUPERLATIVES</b>		
Alanna Smith	4	13	Points.....	33, D. Carrington at Tennessee	
Kiana Williams	2	5		33, A. Smith at Hawaii	
DiJonai Carrington	1	3	Field Goals Made .....	12, A. Smith at Buffalo	
Nadia Fingall	1	1		12, A. Smith at Hawaii	
Anna Wilson	0	1	Field Goal Att. ....	22, A. Smith at Buffalo	
DOUBLE-FIGURE REBOUNDS	2018-19	CAREER	3-Point FG Made .....	5, A. Smith vs. Baylor	
Alanna Smith	2	14		5, K. Williams vs. FGCU	
DiJonai Carrington	3	5		5, A. Smith vs. San Francisco	
Lexie Hull	1	1		5, Lexie Hull vs. Idaho	
Marta Sniezek	0	1	3-Point FG Att.....	11, K. Williams vs. USC	
DOUBLE-FIGURE ASSISTS	2018-19	CAREER	Free Throws Made .....	12, D. Carrington vs. FGCU	
Marta Sniezek	0	2	Free Throw Att. ....	15, D. Carrington vs. FGCU	
LED TEAM IN SCORING (+TIES)	2018-19	CAREER	Rebounds.....	13, A. Smith at Buffalo	
Alanna Smith	6	26		13, D. Carrington at Tennessee	
Kiana Williams	4	12	Assists .....	9, K. Williams vs. Idaho	
DiJonai Carrington	1	6	Steals .....	7, Lacie Hull vs. American	
Shannon Coffee	0	2	Blocked Shots.....	5, A. Smith vs. USC	
Maya Dodson	1	1			
Nadia Fingall	1	1			
Alexa Romano	0	1			

**THE LAST TIME STANFORD****BEAT A NO. 1 TEAM:**

11/17/14 vs. No. 1 Connecticut (88-86 [OT])

**BEAT A TOP 25 TEAM:**

12/18/18 at No. 9 Tennessee (95-85)

**BEAT A TOP 5 TEAM:**

12/15/18 vs. No. 3 Baylor (68-63)

**BEAT A TOP 25 TEAM ON THE ROAD:**

12/18/18 at No. 9 Tennessee (95-85)

**SCORED 100+ POINTS:**

11/11/18 vs. Idaho (115)

**ALLOWED 100+ POINTS:**

12/27/00 at Oklahoma (102)

**SCORED FEWER THAN 50 POINTS:**

3/5/17 vs. Oregon State (48)

**ALLOWED FEWER THAN 50 POINTS:**

12/29/18 vs. CSUN (43)

**SCORED FEWER THAN 40 POINTS:**

1/24/16 at UCLA (36)

**ALLOWED FEWER THAN 40 POINTS:**

12/16/17 vs. UNLV (33)

**SHOT 60+ PERCENT:**

11/25/16 vs. Wichita State (.623)

**OPPONENT SHOT 59+ PERCENT:**

12/16/10 at DePaul (.596)

**SHOT LESS THAN 30 PERCENT:**

12/3/17 at Baylor (.294)

**OPPONENT SHOT LESS THAN 30 PERCENT:**

12/29/18 vs. CSUN (.271)

**FIVE CARDINAL IN DOUBLE-FIGURES:**

12/18/18 at Tennessee

(D. Carrington 33, A. Smith 16, K. Williams 16,

Lacie Hull 14, M. Dodson 10)

**TWO PLAYERS WITH 20+ POINTS:**

3/17/18 vs. Gonzaga

(K. Williams 21, A. Smith 20)

**THREE PLAYERS WITH 20+ POINTS:**

1/23/15 at UCLA,

(B. Roberson 21, B. Samuelson 21, A. Orrange 20)

**PLAYER SCORED 40+ POINTS:**

12/20/11, Nnemkadi Ogumike vs. Tennessee (42)

**PLAYER SCORED 30+ POINTS:**

12/21/18, Alanna Smith at Buffalo (30)

**PLAYER MADE 10+ FIELD GOALS:**

12/21/18, Alanna Smith at Buffalo (12)

**PLAYER MADE 5+ 3-POINTERS:**

12/15/18, Alanna Smith vs. Baylor (5)

**PLAYER MADE 10+ FREE THROWS:**

11/23/18, DiJonai Carrington vs. FGCU (12)

**PLAYER HAD 10+ ASSISTS:**

11/11/16, Marta Sniezek vs. Cal Poly (10)

**PLAYER HAD 15+ REBOUNDS:**

1/12/18, Kaylee Johnson vs. Washington State (15)

**PLAYER HAD 5+ BLOCKED SHOTS:**

1/4/19, Alanna Smith vs. USC (5)

**PLAYER HAD 5+ STEALS:**

11/24/18, Lacie Hull vs. American (7)

**PLAYER HAD A DOUBLE-DOUBLE:**

1/4/19, Alanna Smith vs. USC (19 pts, 11 reb)

**TWO PLAYERS HAD A DOUBLE-DOUBLE:**

3/31/17, Erica McCall (14 pts, 14 reb)

and Alanna Smith (14 pts, 12 reb) vs. South Carolina

**PLAYER HAD A TRIPLE-DOUBLE:**

3/18/02, N. Powell vs. Tulane (16 pts, 10 reb, 10 ast)

**STANFORD HIGHS/LOWS**

Most Points .....	115 vs. Idaho (11/11/18)
Fewest Points .....	62 at Buffalo (12/21/18)
Most 1st Quarter Points.....	28 vs. Idaho (11/11/18)
Fewest 1st Quarter Points.....	15 at Hawaii (11/25/18)
Most 2nd Quarter Points.....	28 vs. Idaho (11/11/18)
Fewest 2nd Quarter Points .....	11 at Buffalo (12/21/18)
Most 3rd Quarter Points .....	40 vs. Idaho (11/11/18)
Fewest 3rd Quarter Points .....	9 at Gonzaga (12/2/18)
Most 4th Quarter Points .....	32 at Gonzaga (12/2/18)
Fewest 4th Quarter Points .....	10 vs. Baylor (12/15/18)
Best FG Pct.....	56.6% (30-of-53) at Hawaii (11/25/18)
Worst FG Pct.....	38.3% (23-of-60) vs. Baylor (12/15/18)
Most 3-Pt. FGs Made.....	16 vs. Idaho (11/11/18)
Fewest 3-Pt. FGs Made .....	5, two times [last vs. CSUN (12/29/18)]
Most 3-Pt. FGs Attempted .....	41 vs. Idaho (11/11/18)
Fewest 3-Pt. FGs Attempted.....	20 at Buffalo (12/21/18)
Best 3-Pt. FG Pct. (min. five attempts).....	58.3% (14-of-24) at Tennessee (12/18/18)
Worst 3-Pt. FG Pct.....	23.8% (5-of-21) vs. CSUN (12/29/18)
Most Free Throws Made .....	17 vs. FGCU (11/23/18)
Fewest Free Throws Made.....	4 vs. CSUN (12/29/18)
Most Free Throws Attempted.....	26 vs. FGCU (11/23/18)
Fewest Free Throws Attempted .....	6 vs. CSUN (12/29/18)
Best Free Throw Pct. (min. five attempts) .....	76.5% (13-of-17) at Hawaii (11/25/18)
Worst Free Throw Pct. ....	42.9% (9-of-21) vs. Baylor (12/15/18)
Most Rebounds.....	53 vs. CSUN (12/29/18)
Fewest Rebounds .....	24 at Gonzaga (12/2/18)
Best Rebound Margin.....	+29 vs. Idaho (11/11/18)
Worst Rebound Margin.....	-14 at Gonzaga (12/2/18)
Most Assists .....	26 vs. Idaho (11/11/18)
Fewest Assists.....	10 vs. UC Davis (11/7/18)
Most Turnovers.....	21 vs. UC Davis (11/7/18)
Fewest Turnovers .....	9 vs. San Francisco (11/15/18)
Best Turnover Margin.....	+8 at Gonzaga (12/2/18)
Worst Turnover Margin.....	-12 at Tennessee (12/18/18)
Most Blocked Shots .....	11 vs. San Francisco (11/15/18)
Fewest Blocked Shots .....	1 vs. FGCU (11/23/18)
Most Steals.....	13 at Hawaii (11/25/18)
Fewest Steals .....	3, two times [last vs. USC (1/4/19)]

**OPPONENT HIGHS/LOWS**

Most Points .....	85 by Tennessee (12/18/18)
Fewest Points .....	43, two times [last by CSUN (12/29/18)]
Most 1st Quarter Points.....	22 by Gonzaga (12/2/18)
Fewest 1st Quarter Points.....	4 by CSUN (12/29/18)
Most 2nd Quarter Points .....	22 by FGCU (11/23/18)
Fewest 2nd Quarter Points .....	8 by CSUN (12/29/18)
Most 3rd Quarter Points .....	25 by Tennessee (12/18/18)
Fewest 3rd Quarter Points .....	10 vs. UC Davis (11/7/18)
Most 4th Quarter Points .....	23 by Tennessee (12/18/18)
Fewest 4th Quarter Points .....	9 vs. UC Davis (11/7/18)
Best FG Pct.....	54.2% (26-of-48) by Gonzaga (12/2/18)
Worst FG Pct.....	22.6% (14-of-62) by UC Davis (11/7/18)
Most 3-Pt. FGs Made.....	15 by Idaho (11/11/18)
Fewest 3-Pt. FGs Made .....	3, two times [last by Baylor (12/15/18)]
Most 3-Pt. FGs Attempted .....	38 by FGCU (11/23/18)
Fewest 3-Pt. FGs Attempted.....	7 by Baylor (12/15/18)
Most FTs Made .....	19 by Gonzaga (12/2/18)
Fewest FTs Made .....	2 by Hawaii (11/25/18)
Most FTs Attempted.....	23, two times [last by Tennessee (12/18/18)]
Fewest FTs Attempted .....	2 by Hawaii (11/25/18)
Most Rebounds .....	44 by Buffalo (12/21/18)
Fewest Rebounds .....	20, two times [last by FGCU (11/23/18)]
Most Assists .....	17 by Hawaii (11/25/18)
Fewest Assists.....	6 by UC Davis (11/7/18)
Most Turnovers.....	23 by Gonzaga (12/2/18)
Fewest Turnovers .....	8 by Tennessee (12/18/18)
Best Turnover Margin.....	+12 by Tennessee (12/18/18)
Worst Turnover Margin.....	-8 by Gonzaga (12/2/18)
Most Blocked Shots.....	6 by Baylor (12/15/18)
Fewest Blocked Shots .....	0, four times [last by Buffalo (12/21/18)]
Most Steals.....	13 by UC Davis (11/7/18)
Fewest Steals .....	3 by American (11/24/18)

## STANFORD RECORDS

## CAREER SCORING

No.	Player	PTS
1.	Chiney Ogwumike (2011-14)	2,737
2.	Candice Wiggins (2005-08)	2,629
3.	Nnemkadi Ogwumike (2009-12)	2,491
4.	Kate Starbird (1994-97)	2,215
5.	Jayne Appel (2007-10)	2,125
6.	Val Whiting (1990-93)	2,077
7.	Nicole Powell (2001-04)	2,062
8.	Jeanne Ruark Hoff (1979-83)	2,038
9.	Kayla Pedersen (2008-11)	1,941
10.	Trisha Stevens (1988-91)	1,649
11.	Jennifer Azzi (1987-90)	1,634
12.	Katy Steding (1987-90)	1,586
13.	Olympia Scott (1995-98)	1,524
14.	Brooke Smith (2005-07)	1,520
15.	Anita Kaplan (1992-95)	1,509
16.	Lindsey Yamasaki (1999-2002)	1,497
17.	Jeanette Pohlen (2008-11)	1,453
18.	Virginia Sourlis (1983-86)	1,449
19.	Sonja Henning (1988-91)	1,445
20.	Amber Orrange (2012-15)	1,426
21.	Louise Smith (1979-82)	1,414
22.	Christy Hedgpeth (1991-94)	1,387
23.	Erica McCall (2014-17)	1,376
24.	Kelley Suminski (2002-05)	1,364
25.	Meg Metzger (1980-83)	1,360
26.	Rachel Hemmer (1992-95)	1,289
27.	Vanessa Nygaard (1994-98)	1,279
28.	Julie Zeilstra (1989-91)	1,259
29.	Brittany McPhee (2015-18)	1,250
	Lili Thompson (2014-16)	1,250
<b>31.</b>	<b>ALANNA SMITH (2016-19)</b>	<b>1,231</b>
32.	Maggie Nelson (1975-78)	1,180
33.	Karlie Samuelson (2014-17)	1,164
34.	Kami Anderson (1985-88)	1,141
35.	Jill Yanke (1986-89)	1,134
36.	Jillian Harmon (2006-09)	1,096
37.	Joslyn Tinkle (2010-13)	1,091
38.	Molly Goodenbour (1990-93)	1,040
39.	Angie Paccione (1979-83)	1,013
40.	Bethany Donaphin (1999-02)	1,010

## CAREER BLOCKS

No.	Player	BLKS
1.	Jayne Appel (2007-10)	273
2.	Chiney Ogwumike (2011-14)	202
3.	Val Whiting (1990-93)	201
4.	Erica McCall (2014-17)	200
<b>5.</b>	<b>ALANNA SMITH (2016-19)</b>	<b>170</b>
6.	Kaylee Johnson (2015-18)	166
7.	Kristen Newlin (2004-07)	163
8.	Joslyn Tinkle (2010-13)	150
9.	Bethany Donaphin (1999-2002)	136
	Cori Enghusen (1999-2002)	136

## CAREER ASSISTS

No.	Player	ASTS
1.	Sonja Henning (1988-91)	757
2.	Jennifer Azzi (1987-90)	751
3.	Milena Flores (1997-2000)	644
4.	Jamila Wideman (1994-97)	585
5.	Nicole Powell (2001-04)	577
6.	Jeanette Pohlen (2008-11)	560
7.	Amber Orrange (2012-15)	552
8.	Virginia Sourlis (1983-86)	483
9.	Molly Goodenbour (1990-93)	441
10.	Kate Starbird (1994-97)	437
<u>11.</u>	<u>Candice Wiggins (2005-08)</u>	<u>436</u>
	<b>MARTA SNIEZEK (2016-19)</b>	<b>428</b>

## SINGLE-GAME STEALS

No.	Player	STLS
1.	Katy Steding at Northwestern (12/3/88)	10
2.	Milena Flores vs. Saint Mary's (12/27/99)	9
3.	Jennifer Azzi vs. North Carolina State (12/19/87)	8
<b>4.</b>	<b>LACIE HULL VS. AMERICAN (11/24/18)</b>	<b>7</b>
	Candice Wiggins vs. Old Dominion (11/24/07)	7
	Brooke Smith at Washington State (1/13/07)	7
	Jamila Wideman at Colorado (12/28/96)	7
	Katy Steding at UCLA (1/7/89)	7
	Jennifer Azzi at Fresno State (12/1/87)	7

## TEAM SINGLE-GAME SCORING

No.	Opponent	PTS
1.	vs. Cal State Fullerton (12/10/94)	122
	vs. Long Beach State (12/8/93)	122
3.	vs. Wisconsin (11/25/88)	119
4.	vs. Arizona (2/23/91)	116
<b>5.</b>	<b>VS. IDAHO (11/11/18)</b>	<b>115</b>
6.	vs. Arkansas (3/24/90)	114
7.	vs. Arizona State (1/13/94)	113
	vs. California (2/1/91)	113
	at Arizona (2/24/90)	113
	vs. Ohio (11/25/89)	113

## TEAM SINGLE-GAME FIELD GOALS

No.	Opponent	FGM
1.	vs. Cal State Fullerton (12/10/94)	51
2.	at Arizona (2/24/90)	47
3.	vs. Long Beach State (12/8/93)	46
<b>4.</b>	<b>VS. IDAHO (11/11/18)</b>	<b>45</b>
	vs. California (2/18/94)	45
	vs. Arkansas (3/24/90)	45
	vs. California (3/2/90)	45
	vs. Oregon (2/25/89)	45
9.	vs. Arizona (3/11/11)	44
	vs. Providence (12/28/94)	44
	vs. Illinois State (3/18/89)	44
	vs. Wisconsin (11/25/88)	44

## TEAM SINGLE-GAME 3-POINTERS

No.	Opponent	3FGM
<b>1.</b>	<b>VS. IDAHO (11/11/18)</b>	<b>16</b>
	at UCLA (2/24/02)	16
	at Washington (2/24/01)	16
<b>4.</b>	<b>VS. SAN FRANCISCO (11/15/18)</b>	<b>15</b>
	at San Francisco (11/29/17)	15
	vs. Missouri State (11/27/15)	15
	at Arizona (1/17/14)	15
	vs. UCLA (1/20/05)	15
	vs. Washington State (1/31/04)	15
	vs. Arizona (1/10/04)	15

**2018-19 Results**

<b>RECORD:</b>	<b>OVERALL</b>	<b>HOME</b>	<b>AWAY</b>	<b>NEUTRAL</b>
ALL GAMES	11-1	6-0	3-1	2-0
CONFERENCE	1-0	1-0	0-0	0-0
NON-CONFERENCE	10-1	5-0	3-1	2-0

<b>DATE</b>	<b>TIME</b>	<b>OPPONENT</b>		<b>SCORE</b>	<b>ATTEND</b>	<b>HIGH POINTS</b>	<b>HIGH REBOUNDS</b>
11/7/18	7:00 p.m.	UC DAVIS	W	71-43	2471	(16) Smith, Alanna	(11) Hull, Lexie
11/11/18	2:00 p.m.	IDAHO	W	115-71	2582	(19) Williams, Kiana (19) Smith, Alanna	(9) Smith, Alanna
11/15/18	7:00 p.m.	SAN FRANCISCO	W	96-62	2077	(21) Williams, Kiana	(7) Smith, Alanna
11/23/18	4:30 p.m.	# vs. FGCU	W	88-65	1346	(24) Fingall, Nadia	(9) Carrington, DiJonai
11/24/18	12:00 p.m.	# vs. American	W	71-49	1268	(25) Smith, Alanna	(8) Smith, Alanna
11/25/18	2:30 p.m.	# at Hawaii	W	81-59	1383	(30) Smith, Alanna	(6) Fingall, Nadia
12/2/18	2:00 p.m.	at Gonzaga		73-79 L	6,000	(18) Williams, Kiana	(7) Smith, Alanna
12/15/18	12:00 p.m.	BAYLOR	W	68-63	3,440	(21) Smith, Alanna	(8) Smith, Alanna
12/18/18	6:00 p.m.	at Tennessee	W	95-85	8,051	(33) Carrington, DiJonai	(13) Carrington, DiJonai
12/21/18	12:00 p.m.	at Buffalo	W	62-55	3,412	(30) Smith, Alanna	(13) Smith, Alanna
12/29/18	2:00 p.m.	CSUN	W	69-43	2,520	(16) Dodson, Maya	(12) Carrington, DiJonai
1/4/19	8:00 p.m.	* USC	W	72-64	2,557	(22) Williams, Kiana	(11) Smith, Alanna

\* = Pac-12

# = Rainbow Wahine Showdown; Honolulu, Hawaii

<b>ATTENDANCE</b>	<b>GAMES</b>	<b>TOTALS</b>	<b>AVG/GAME</b>
HOME	6	15647	2608
AWAY	4	18846	4712
NEUTRAL	2	2614	1307
TOTAL	12	37107	3092



## 2018-19 Game-by-Game Comparison

	Date	Score	W/L	---TOTAL---		--3-PTRS--		FT-FTA Pct		----REBOUNDS----				PF	A	TO	Blk	Stl	Pts	Avg
				FG-FGA	Pct	3FG-FGA	Pct		Pct	Off	Def	Tot	Avg							
UC Davis	11/7	71-43	W	14-62	.226	8-31	.258	7-13	.538	6	19	25	25.0	17	6	18	3	13	43	43.0
<b>Stanford</b>				<b>26-61</b>	<b>.426</b>	<b>6-24</b>	<b>.250</b>	<b>13-18</b>	<b>.722</b>	<b>12</b>	<b>38</b>	<b>50</b>	<b>50.0</b>	<b>18</b>	<b>10</b>	<b>21</b>	<b>6</b>	<b>12</b>	<b>71</b>	<b>71.0</b>
Idaho	11/11	115-71	W	25-59	.424	15-24	.625	6-13	.462	2	18	20	22.5	20	14	16	2	4	71	57.0
<b>Stanford</b>				<b>45-84</b>	<b>.536</b>	<b>16-41</b>	<b>.390</b>	<b>9-13</b>	<b>.692</b>	<b>20</b>	<b>29</b>	<b>49</b>	<b>49.5</b>	<b>19</b>	<b>26</b>	<b>10</b>	<b>7</b>	<b>8</b>	<b>115</b>	<b>93.0</b>
San Francisco	11/15	96-62	W	20-60	.333	5-16	.313	17-23	.739	13	26	39	28.0	18	8	14	0	4	62	58.7
<b>Stanford</b>				<b>36-70</b>	<b>.514</b>	<b>15-32</b>	<b>.469</b>	<b>9-15</b>	<b>.600</b>	<b>9</b>	<b>25</b>	<b>34</b>	<b>44.3</b>	<b>19</b>	<b>24</b>	<b>9</b>	<b>11</b>	<b>4</b>	<b>96</b>	<b>94.0</b>
FGCU	11/23	88-65	W	23-63	.365	10-38	.263	9-11	.818	3	17	20	26.0	19	9	12	0	8	65	60.2
<b>Stanford</b>				<b>30-58</b>	<b>.517</b>	<b>11-22</b>	<b>.500</b>	<b>17-26</b>	<b>.654</b>	<b>12</b>	<b>35</b>	<b>47</b>	<b>45.0</b>	<b>14</b>	<b>22</b>	<b>16</b>	<b>1</b>	<b>7</b>	<b>88</b>	<b>92.5</b>
American	11/24	71-49	W	17-46	.370	3-12	.250	12-15	.800	4	21	25	25.8	19	10	16	1	3	49	58.0
<b>Stanford</b>				<b>26-62</b>	<b>.419</b>	<b>7-22</b>	<b>.318</b>	<b>12-17</b>	<b>.706</b>	<b>15</b>	<b>25</b>	<b>40</b>	<b>44.0</b>	<b>16</b>	<b>18</b>	<b>12</b>	<b>2</b>	<b>12</b>	<b>71</b>	<b>88.2</b>
Hawaii	11/25	81-59	W	22-54	.407	13-22	.591	2-2	1.000	6	16	22	25.2	19	17	19	1	6	59	58.2
<b>Stanford</b>				<b>30-53</b>	<b>.566</b>	<b>8-21</b>	<b>.381</b>	<b>13-17</b>	<b>.765</b>	<b>8</b>	<b>24</b>	<b>32</b>	<b>42.0</b>	<b>11</b>	<b>18</b>	<b>13</b>	<b>5</b>	<b>13</b>	<b>81</b>	<b>87.0</b>
Gonzaga	12/2	73-79	L	26-48	.542	8-13	.615	19-22	.864	10	28	38	27.0	16	14	23	3	9	79	61.1
<b>Stanford</b>				<b>25-57</b>	<b>.439</b>	<b>9-22</b>	<b>.409</b>	<b>14-24</b>	<b>.583</b>	<b>9</b>	<b>15</b>	<b>24</b>	<b>39.4</b>	<b>18</b>	<b>14</b>	<b>15</b>	<b>6</b>	<b>12</b>	<b>73</b>	<b>85.0</b>
Baylor	12/15	68-63	W	22-63	.349	3-7	.429	16-20	.800	12	31	43	29.0	18	13	15	6	4	63	61.4
<b>Stanford</b>				<b>23-60</b>	<b>.383</b>	<b>13-30</b>	<b>.433</b>	<b>9-21</b>	<b>.429</b>	<b>7</b>	<b>23</b>	<b>30</b>	<b>38.2</b>	<b>19</b>	<b>13</b>	<b>10</b>	<b>5</b>	<b>7</b>	<b>68</b>	<b>82.9</b>
Tennessee	12/18	95-85	W	30-75	.400	9-28	.321	16-23	.696	12	19	31	29.2	21	14	8	0	8	85	64.0
<b>Stanford</b>				<b>33-60</b>	<b>.550</b>	<b>14-24</b>	<b>.583</b>	<b>15-21</b>	<b>.714</b>	<b>9</b>	<b>36</b>	<b>45</b>	<b>39.0</b>	<b>15</b>	<b>19</b>	<b>20</b>	<b>3</b>	<b>3</b>	<b>95</b>	<b>84.2</b>
Buffalo	12/21	62-55	W	19-69	.275	6-29	.207	11-17	.647	18	26	44	30.7	15	12	14	0	12	55	63.1
<b>Stanford</b>				<b>23-59</b>	<b>.390</b>	<b>5-20</b>	<b>.250</b>	<b>11-15</b>	<b>.733</b>	<b>12</b>	<b>33</b>	<b>45</b>	<b>39.6</b>	<b>18</b>	<b>18</b>	<b>19</b>	<b>5</b>	<b>5</b>	<b>62</b>	<b>82.0</b>
CSUN	12/29	69-43	W	16-59	.271	5-21	.238	6-12	.500	12	23	35	31.1	9	11	15	4	6	43	61.3
<b>Stanford</b>				<b>30-73</b>	<b>.411</b>	<b>5-21</b>	<b>.238</b>	<b>4-6</b>	<b>.667</b>	<b>19</b>	<b>34</b>	<b>53</b>	<b>40.8</b>	<b>13</b>	<b>14</b>	<b>10</b>	<b>5</b>	<b>7</b>	<b>69</b>	<b>80.8</b>
USC	1/4	72-64	W	26-69	.377	5-24	.208	7-13	.538	13	27	40	31.8	18	10	13	5	8	64	61.5
<b>Stanford</b>				<b>27-67</b>	<b>.403</b>	<b>8-29</b>	<b>.276</b>	<b>10-14</b>	<b>.714</b>	<b>14</b>	<b>32</b>	<b>46</b>	<b>41.2</b>	<b>11</b>	<b>12</b>	<b>15</b>	<b>7</b>	<b>3</b>	<b>72</b>	<b>80.1</b>

**2018-19 Stanford Women's Basketball**  
**Stanford Combined Team Statistics (as of Jan 04, 2019)**  
**All games**

RECORD:	OVERALL	HOME	AWAY	NEUTRAL
ALL GAMES	11-1	6-0	3-1	2-0
CONFERENCE	1-0	1-0	0-0	0-0
NON-CONFERENCE	10-1	5-0	3-1	2-0

#	Player	gp-gs	min	avg	Total		3-Point		F-Throw		Rebounds					pts	avg					
					fg-fga	fg%	3fg-fga	3fg%	ft-fga	ft%	off	def	tot	avg	pf			dq	a	to	blk	stl
11	Smith, Alanna	12-12	301	25.1	83-149	.557	31-66	.470	30-43	.698	19	64	83	6.9	33	2	31	31	23	11	227	18.9
23	Williams, Kiana	12-12	394	32.8	60-141	.426	31-81	.383	14-21	.667	0	29	29	2.4	16	0	54	35	0	11	165	13.8
21	Carrington, DiJonai	12-12	297	24.8	44-99	.444	11-33	.333	36-53	.679	13	69	82	6.8	20	0	21	24	2	19	135	11.3
12	Hull, Lexie	3-3	77	25.7	12-27	.444	6-15	.400	2-2	1.000	9	12	21	7.0	8	0	3	4	3	8	32	10.7
15	Dodson, Maya	11-0	239	21.7	44-81	.543	0-0	.000	11-22	.500	24	22	46	4.2	22	0	16	10	19	5	99	9.0
04	Fingall, Nadia	12-12	244	20.3	40-80	.500	5-17	.294	11-21	.524	28	31	59	4.9	23	0	20	16	5	5	96	8.0
24	Hull, Lacie	12-6	299	24.9	22-54	.407	14-33	.424	4-4	1.000	9	30	39	3.3	23	0	20	11	5	23	62	5.2
10	Jerome, Alyssa	12-0	157	13.1	11-33	.333	4-10	.400	11-15	.733	9	27	36	3.0	16	0	8	9	3	2	37	3.1
03	Wilson, Anna	8-3	82	10.3	7-23	.304	4-18	.222	5-6	.833	3	12	15	1.9	11	0	7	3	0	7	23	2.9
54	Brown, Jenna	12-0	130	10.8	10-32	.313	1-8	.125	5-13	.385	2	19	21	1.8	7	0	19	9	0	0	26	2.2
02	Coffee, Shannon	12-0	80	6.7	10-20	.500	4-9	.444	2-2	1.000	5	11	16	1.3	3	0	5	5	2	0	26	2.2
20	Moschkau, Estella	8-0	37	4.6	5-6	.833	4-5	.800	0-0	.000	1	2	3	0.4	3	0	2	6	0	2	14	1.8
14	Brewer, Mikaela	6-0	21	3.5	3-7	.429	0-3	.000	2-2	1.000	1	2	3	0.5	2	0	0	2	1	0	8	1.3
22	Romano, Alexa	10-0	42	4.2	3-12	.250	2-10	.200	3-3	1.000	1	2	3	0.3	4	0	2	2	0	0	11	1.1
Team											22	17	39				3					
Total.....		12	2400		354-764	.463	117-308	.380	136-207	.657	146	349	495	41.2	191	2	208	170	63	93	961	80.1
Opponents.....		12	2400		260-727	.358	90-265	.340	128-184	.696	111	271	382	31.8	209	-	138	183	25	85	738	61.5

TEAM STATISTICS	STAN	OPP	Date	Opponent	Score	Att.
SCORING	961	738	11/7/18	UC DAVIS	w 71-43	2471
Points per game	80.1	61.5	11/11/18	IDAHO	w 115-71	2582
Scoring margin	+18.6	-	11/15/18	SAN FRANCISCO	w 96-62	2077
FIELD GOALS-ATT	354-764	260-727	# 11/23/18	vs FGCU	w 88-65	1346
Field goal pct	.463	.358	# 11/24/18	vs American	w 71-49	1268
3 POINT FG-ATT	117-308	90-265	# 11/25/18	at Hawaii	w 81-59	1383
3-point FG pct	.380	.340	12/2/18	at Gonzaga	L 73-79	6000
3-pt FG made per game	9.8	7.5	12/15/18	BAYLOR	w 68-63	3440
FREE THROWS-ATT	136-207	128-184	12/18/18	at Tennessee	w 95-85	8051
Free throw pct	.657	.696	12/21/18	at Buffalo	w 62-55	3412
F-Throws made per game	11.3	10.7	12/29/18	CSUN	w 69-43	2520
REBOUNDS	495	382	* 1/4/19	USC	w 72-64	2557
Rebounds per game	41.2	31.8				
Rebounding margin	+9.4	-				
ASSISTS	208	138				
Assists per game	17.3	11.5				
TURNOVERS	170	183				
Turnovers per game	14.2	15.3				
Turnover margin	+1.1	-				
Assist/turnover ratio	1.2	0.8				
STEALS	93	85				
Steals per game	7.8	7.1				
BLOCKS	63	25				
Blocks per game	5.3	2.1				
ATTENDANCE	15647	21460				
Home games-Avg/Game	6-2608	4-4712				
Neutral site-Avg/Game	-	2-1307				

Score by Periods	1st	2nd	3rd	4th	Totals
Stanford	227	235	246	253	961
Opponents	159	179	200	200	738

**POINTS-REBOUNDS-ASSISTS**

OPPONENT	#2 SC	#3 AW	#4 NF	#10 AJ	#11 AS	#12 LH	#13 MS	#14 MB	#15 MD	#20 EM	#21 DC	#22 AR	#23 KW	#24 LH	#54 JB
UC Davis	0-1-1	0-5-1	2-4-0	6-8-0	16-2-1	11-11-0	DNP	0-0-0	10-6-1	0-0-0	0-2-1	6-2-0	14-1-3	2-3-0	4-3-2
Idaho	2-1-0	10-1-1	16-8-2	4-6-2	19-9-4	17-5-0	DNP	2-0-0	10-5-0	3-0-1	6-4-1	0-0-1	19-3-9	0-2-2	7-3-3
San Francisco	0-0-2	2-0-0	7-3-2	7-2-0	18-7-3	4-5-3	DNP	4-1-0	10-3-6	5-1-1	9-5-4	0-0-0	21-0-3	6-1-0	3-2-0
FGCU	0-1-0	8-4-3	24-8-5	2-3-1	6-6-2	DNP	DNP	DNP	6-4-1	3-0-0	16-9-3	3-0-0	17-6-2	3-4-4	0-0-1
American	3-1-0	0-1-2	10-5-2	3-3-0	25-8-4	DNP	DNP	DNP	4-3-1	0-0-0	13-7-1	0-0-0	9-0-7	0-3-0	4-3-1
Hawaii	2-1-0	2-4-0	7-6-1	4-2-1	30-4-3	DNP	DNP	0-0-0	7-1-0	0-0-0	12-4-4	0-0-0	9-4-3	8-3-6	0-0-0
Gonzaga	0-0-0	DNP	5-3-3	6-4-0	13-7-1	DNP	DNP	DNP	8-4-2	DNP	13-3-1	0-0-0	18-1-3	9-1-3	1-0-1
Baylor	9-2-0	1-0-0	2-3-1	0-2-0	21-8-2	DNP	DNP	DNP	9-5-1	DNP	10-6-2	0-0-0	13-1-5	3-2-0	0-1-2
Tennessee	0-2-1	DNP	3-6-1	0-2-0	16-3-3	DNP	DNP	DNP	10-9-2	DNP	33-13-2	DNP	16-5-7	14-3-1	3-1-2
Buffalo	0-0-0	DNP	12-7-1	0-0-1	30-13-5	DNP	DNP	0-0-0	9-1-1	0-0-0	4-10-0	0-0-0	7-2-7	0-5-2	0-1-1
CSUN	4-3-1	DNP	6-2-0	5-2-2	14-5-1	DNP	DNP	2-2-0	16-5-1	3-2-0	5-12-2	2-1-1	0-2-1	10-4-2	2-7-3
USC	6-4-0	0-0-0	2-4-2	0-2-1	19-11-2	DNP	DNP	DNP	DNP	DNP	14-7-0	DNP	22-4-4	7-8-0	2-0-3

**GAME-BY-GAME STARTERS**

OPPONENT	DATE	SCORE	W/L	1	2	3	4	5
UC Davis	11/7	71-43	W	Williams	Lexie Hull	Carrington	Smith	Fingall
Idaho	11/11	115-71	W	Williams	Lexie Hull	Carrington	Smith	Fingall
San Francisco	11/15	96-62	W	Williams	Lexie Hull	Carrington	Smith	Fingall
FGCU	11/23	88-65	W	Williams	Wilson	Carrington	Smith	Fingall
American	11/24	71-49	W	Williams	Wilson	Carrington	Smith	Fingall
Hawaii	11/25	81-59	W	Williams	Wilson	Carrington	Smith	Fingall
Gonzaga	12/2	73-79	L	Williams	Lacie Hull	Carrington	Smith	Fingall
Baylor	12/15	68-63	W	Williams	Lacie Hull	Carrington	Smith	Fingall
Tennessee	12/18	95-85	W	Williams	Lacie Hull	Carrington	Smith	Fingall
Buffalo	12/21	62-55	W	Williams	Lacie Hull	Carrington	Smith	Fingall
CSUN	12/29	69-43	W	Williams	Lacie Hull	Carrington	Smith	Fingall
USC	1/4	72-64	W	Williams	Lacie Hull	Carrington	Smith	Fingall

**2018-19 Stanford Women's Basketball**  
**Stanford Season/Career Statistics (as of Jan 04, 2019)**  
**All games**

## SEASON STATISTICS

## CAREER STATISTICS

SUMMARY	gp-gs	min/g	fg%	3fg%	ft%	r/g	a/g	stl	blk	pts/g	gp-gs	min/g	fg%	3fg%	ft%	r/g	a/g	stl	blk	pts/g
Smith, Alanna	12-12	25.1	.557	.470	.698	6.9	2.6	11	23	18.9	119-50	20.4	.477	.348	.636	5.2	1.0	86	170	10.3
Williams, Kiana	12-12	32.8	.426	.383	.667	2.4	4.5	11	0	13.8	47-38	27.5	.418	.383	.769	1.9	2.6	41	5	11.2
Carrington, DiJonai	12-12	24.8	.444	.333	.679	6.8	1.8	19	2	11.3	79-19	16.4	.418	.286	.667	4.3	1.2	84	12	6.4
Hull, Lexie	3-3	25.7	.444	.400	1.000	7.0	1.0	8	3	10.7	3-3	25.7	.444	.400	1.000	7.0	1.0	8	3	10.7
Dodson, Maya	11-0	21.7	.543	.000	.500	4.2	1.5	5	19	9.0	44-4	13.9	.516	.000	.436	2.6	0.5	7	46	4.9
Fingall, Nadia	12-12	20.3	.500	.294	.524	4.9	1.7	5	5	8.0	82-20	12.9	.487	.328	.571	3.2	0.7	34	31	4.4
Hull, Lacie	12-6	24.9	.407	.424	1.000	3.3	1.7	23	5	5.2	12-6	24.9	.407	.424	1.000	3.3	1.7	23	5	5.2
Jerome, Alyssa	12-0	13.1	.333	.400	.733	3.0	0.7	2	3	3.1	46-1	10.7	.379	.317	.714	1.6	0.5	3	6	2.3
Wilson, Anna	8-3	10.3	.304	.222	.833	1.9	0.9	7	0	2.9	35-5	10.1	.316	.295	.615	1.3	0.6	20	1	3.1
Brown, Jenna	12-0	10.8	.313	.125	.385	1.8	1.6	0	0	2.2	12-0	10.8	.313	.125	.385	1.8	1.6	0	0	2.2
Coffee, Shannon	12-0	6.7	.500	.444	1.000	1.3	0.4	0	2	2.2	71-2	4.5	.453	.343	.441	1.0	0.2	5	10	1.7
Moschkau, Estella	8-0	4.6	.833	.800	.000	0.4	0.3	2	0	1.8	31-0	2.8	.600	.583	.500	0.2	0.1	2	0	0.8
Brewer, Mikaela	6-0	3.5	.429	.000	1.000	0.5	0.0	0	1	1.3	33-0	3.4	.273	.214	1.000	0.3	0.2	1	1	1.0
Romano, Alexa	10-0	4.2	.250	.200	1.000	0.3	0.2	0	0	1.1	78-8	6.5	.344	.300	.727	0.7	0.4	20	4	1.6

SCORING	fg-fga	fg%	3fg-fga	3fg%	ft-fta	ft%	pts	pts/g	fg-fga	fg%	3fg-fga	3fg%	ft-fta	ft%	pts	pts/g
Smith, Alanna	83-149	.557	31-66	.470	30-43	.698	227	18.9	481-1008	.477	105-302	.348	164-258	.636	1231	10.3
Williams, Kiana	60-141	.426	31-81	.383	14-21	.667	165	13.8	188-450	.418	102-266	.383	50-65	.769	528	11.2
Carrington, DiJonai	44-99	.444	11-33	.333	36-53	.679	135	11.3	186-445	.418	46-161	.286	86-129	.667	504	6.4
Hull, Lexie	12-27	.444	6-15	.400	2-2	1.000	32	10.7	12-27	.444	6-15	.400	2-2	1.000	32	10.7
Dodson, Maya	44-81	.543	0-0	.000	11-22	.500	99	9.0	95-184	.516	0-0	.000	24-55	.436	214	4.9
Fingall, Nadia	40-80	.500	5-17	.294	11-21	.524	96	8.0	148-304	.487	20-61	.328	48-84	.571	364	4.4
Hull, Lacie	22-54	.407	14-33	.424	4-4	1.000	62	5.2	22-54	.407	14-33	.424	4-4	1.000	62	5.2
Jerome, Alyssa	11-33	.333	4-10	.400	11-15	.733	37	3.1	39-103	.379	13-41	.317	15-21	.714	106	2.3
Wilson, Anna	7-23	.304	4-18	.222	5-6	.833	23	2.9	37-117	.316	28-95	.295	8-13	.615	110	3.1
Brown, Jenna	10-32	.313	1-8	.125	5-13	.385	26	2.2	10-32	.313	1-8	.125	5-13	.385	26	2.2
Coffee, Shannon	10-20	.500	4-9	.444	2-2	1.000	26	2.2	48-106	.453	12-35	.343	15-34	.441	123	1.7
Moschkau, Estella	5-6	.833	4-5	.800	0-0	.000	14	1.8	9-15	.600	7-12	.583	1-2	.500	26	0.8
Brewer, Mikaela	3-7	.429	0-3	.000	2-2	1.000	8	1.3	12-44	.273	6-28	.214	2-2	1.000	32	1.0
Romano, Alexa	3-12	.250	2-10	.200	3-3	1.000	11	1.1	43-125	.344	21-70	.300	16-22	.727	123	1.6

TOTALS	o-reb	d-reb	t-reb	pf	fo	ast	to	a/to	o-reb	d-reb	t-reb	pf	fo	ast	to	a/to
Smith, Alanna	19	64	83	33	2	31	31	1.0	205	411	616	280	9	119	204	0.6
Williams, Kiana	0	29	29	16	0	54	35	1.5	4	83	87	54	0	121	75	1.6
Carrington, DiJonai	13	69	82	20	0	21	24	0.9	85	255	340	121	0	93	117	0.8
Hull, Lexie	9	12	21	8	0	3	4	0.8	9	12	21	8	0	3	4	0.8
Dodson, Maya	24	22	46	22	0	16	10	1.6	56	57	113	60	1	21	36	0.6
Fingall, Nadia	28	31	59	23	0	20	16	1.3	102	157	259	127	1	61	68	0.9
Hull, Lacie	9	30	39	23	0	20	11	1.8	9	30	39	23	0	20	11	1.8
Jerome, Alyssa	9	27	36	16	0	8	9	0.9	20	52	72	43	0	22	31	0.7
Wilson, Anna	3	12	15	11	0	7	3	2.3	4	40	44	37	0	20	23	0.9
Brown, Jenna	2	19	21	7	0	19	9	2.1	2	19	21	7	0	19	9	2.1
Coffee, Shannon	5	11	16	3	0	5	5	1.0	17	57	74	27	0	15	36	0.4
Moschkau, Estella	1	2	3	3	0	2	6	0.3	3	4	7	7	0	4	6	0.7
Brewer, Mikaela	1	2	3	2	0	0	2	0.0	2	8	10	5	0	6	12	0.5
Romano, Alexa	1	2	3	4	0	2	2	1.0	10	44	54	22	0	32	31	1.0



## 2018-19 Individual Game-by-Game

## #02 Coffee, Shannon

Opponent	Date	gs	min	Total		3-Pointers		Free throws		Rebounds				pf	a	t/o	blk	stl	pts	avg
				fg-fga	pct	3fg-fga	pct	ft-fta	pct	off	def	tot	avg							
UC DAVIS	11/7/18		6	0-1	.000	0-0	.000	0-0	.000	1	0	1	1.0	1	1	1	0	0	0	0.0
IDAHO	11/11/18		6	1-1	1.000	0-0	.000	0-0	.000	0	1	1	1.0	1	0	0	0	0	2	1.0
SAN FRANCISCO	11/15/18		8	0-1	.000	0-1	.000	0-0	.000	0	0	0	0.7	0	2	0	1	0	0	0.7
vs FGCU	11/23/18		1	0-0	.000	0-0	.000	0-0	.000	0	1	1	0.8	0	0	0	0	0	0	0.5
vs American	11/24/18		4	1-3	.333	1-2	.500	0-0	.000	0	1	1	0.8	0	0	0	0	0	3	1.0
at Hawaii	11/25/18		5	1-2	.500	0-0	.000	0-0	.000	0	1	1	0.8	0	0	0	0	0	2	1.2
at Gonzaga	12/2/18		2	0-0	.000	0-0	.000	0-0	.000	0	0	0	0.7	0	0	0	0	0	0	1.0
BAYLOR	12/15/18		19	3-4	.750	3-4	.750	0-0	.000	0	2	2	0.9	1	0	1	0	0	9	2.0
at Tennessee	12/18/18		8	0-2	.000	0-2	.000	0-0	.000	0	2	2	1.0	0	1	1	0	0	0	1.8
at Buffalo	12/21/18		0	0-0	.000	0-0	.000	0-0	.000	0	0	0	0.9	0	0	0	0	0	0	1.6
CSUN	12/29/18		9	2-3	.667	0-0	.000	0-0	.000	2	1	3	1.1	0	1	1	1	0	4	1.8
USC	1/4/19		12	2-3	.667	0-0	.000	2-2	1.000	2	2	4	1.3	0	0	1	0	0	6	2.2
Totals		0	80	10-20	.500	4-9	.444	2-2	1.000	5	11	16	1.3	3	5	5	2	0	26	2.2

## #03 Wilson, Anna

Opponent	Date	gs	min	Total		3-Pointers		Free throws		Rebounds				pf	a	t/o	blk	stl	pts	avg
				fg-fga	pct	3fg-fga	pct	ft-fta	pct	off	def	tot	avg							
UC DAVIS	11/7/18		13	0-4	.000	0-4	.000	0-0	.000	0	5	5	5.0	1	1	1	0	1	0	0.0
IDAHO	11/11/18		11	3-8	.375	2-6	.333	2-2	1.000	1	0	1	3.0	2	1	0	0	2	10	5.0
SAN FRANCISCO	11/15/18		13	1-3	.333	0-1	.000	0-0	.000	0	0	0	2.0	2	0	0	0	1	2	4.0
vs FGCU	11/23/18	*	17	3-6	.500	2-5	.400	0-0	.000	1	3	4	2.5	2	3	1	0	1	8	5.0
vs American	11/24/18	*	5	0-0	.000	0-0	.000	0-0	.000	1	0	1	2.2	3	2	0	0	0	0	4.0
at Hawaii	11/25/18	*	15	0-2	.000	0-2	.000	2-2	1.000	0	4	4	2.5	1	0	0	0	1	2	3.7
at Gonzaga	12/2/18	dnp		-	-	-	-	-	-	-	-	-	-	-	-	-	-	-	-	-
BAYLOR	12/15/18		3	0-0	.000	0-0	.000	1-2	.500	0	0	0	2.1	0	0	1	0	1	1	3.3
at Tennessee	12/18/18	dnp		-	-	-	-	-	-	-	-	-	-	-	-	-	-	-	-	-
at Buffalo	12/21/18	dnp		-	-	-	-	-	-	-	-	-	-	-	-	-	-	-	-	-
USC	1/4/19		5	0-0	.000	0-0	.000	0-0	.000	0	0	0	1.9	0	0	0	0	0	0	2.9
Totals		3	82	7-23	.304	4-18	.222	5-6	.833	3	12	15	1.9	11	7	3	0	7	23	2.9

## #04 Fingall, Nadia

Opponent	Date	gs	min	Total		3-Pointers		Free throws		Rebounds				pf	a	t/o	blk	stl	pts	avg
				fg-fga	pct	3fg-fga	pct	ft-fta	pct	off	def	tot	avg							
UC DAVIS	11/7/18	*	16	0-1	.000	0-0	.000	2-2	1.000	1	3	4	4.0	3	0	3	0	0	2	2.0
IDAHO	11/11/18	*	20	7-9	.778	0-0	.000	2-5	.400	3	5	8	6.0	1	2	1	2	0	16	9.0
SAN FRANCISCO	11/15/18	*	13	3-6	.500	1-3	.333	0-0	.000	2	1	3	5.0	3	2	1	0	0	7	8.3
vs FGCU	11/23/18	*	30	11-14	.786	1-2	.500	1-4	.250	5	3	8	5.8	2	5	1	0	1	24	12.3
vs American	11/24/18	*	24	3-8	.375	1-4	.250	3-4	.750	4	1	5	5.6	3	2	1	0	1	10	11.8
at Hawaii	11/25/18	*	24	3-7	.429	1-1	1.000	0-0	.000	2	4	6	5.7	1	1	2	0	1	7	11.0
at Gonzaga	12/2/18	*	25	2-4	.500	1-2	.500	0-0	.000	1	2	3	5.3	2	3	1	1	2	5	10.1
BAYLOR	12/15/18	*	17	1-8	.125	0-3	.000	0-0	.000	2	1	3	5.0	3	1	1	1	0	2	9.1
at Tennessee	12/18/18	*	18	1-4	.250	0-0	.000	1-2	.500	2	4	6	5.1	0	1	2	0	0	3	8.4
at Buffalo	12/21/18	*	29	5-9	.556	0-0	.000	2-4	.500	3	4	7	5.3	1	1	1	0	0	12	8.8
CSUN	12/29/18	*	10	3-8	.375	0-1	.000	0-0	.000	1	1	2	5.0	3	0	0	0	0	6	8.5
USC	1/4/19	*	18	1-2	.500	0-1	.000	0-0	.000	2	2	4	4.9	1	2	2	1	0	2	8.0
Totals		12	244	40-80	.500	5-17	.294	11-21	.524	28	31	59	4.9	23	20	16	5	5	96	8.0

## 2018-19 Individual Game-by-Game

## #10 Jerome, Alyssa

Opponent	Date	gs	min	Total		3-Pointers		Free throws		Rebounds				pf	a	t/o	blk	stl	pts	avg
				fg-fga	pct	3fg-fga	pct	ft-fta	pct	off	def	tot	avg							
UC DAVIS	11/7/18		16	2-5	.400	0-1	.000	2-2	1.000	2	6	8	8.0	0	0	1	0	0	6	6.0
IDAHO	11/11/18		13	1-2	.500	0-1	.000	2-2	1.000	0	6	6	7.0	4	2	1	0	0	4	5.0
SAN FRANCISCO	11/15/18		16	3-4	.750	1-2	.500	0-1	.000	0	2	2	5.3	2	0	0	2	0	7	5.7
vs FGCU	11/23/18		14	1-4	.250	0-0	.000	0-0	.000	0	3	3	4.8	1	1	2	0	0	2	4.8
vs American	11/24/18		12	0-2	.000	0-1	.000	3-4	.750	2	1	3	4.4	2	0	1	0	0	3	4.4
at Hawaii	11/25/18		11	0-3	.000	0-1	.000	4-6	.667	2	0	2	4.0	1	1	0	0	1	4	4.3
at Gonzaga	12/2/18		18	2-5	.400	2-2	1.000	0-0	.000	1	3	4	4.0	1	0	0	1	0	6	4.6
BAYLOR	12/15/18		8	0-1	.000	0-0	.000	0-0	.000	0	2	2	3.8	0	0	0	0	0	0	4.0
at Tennessee	12/18/18		4	0-1	.000	0-0	.000	0-0	.000	1	1	2	3.6	0	0	2	0	0	0	3.6
at Buffalo	12/21/18		9	0-1	.000	0-0	.000	0-0	.000	0	0	0	3.2	2	1	1	0	1	0	3.2
CSUN	12/29/18		22	2-4	.500	1-2	.500	0-0	.000	0	2	2	3.1	2	2	1	0	0	5	3.4
USC	1/4/19		14	0-1	.000	0-0	.000	0-0	.000	1	1	2	3.0	1	1	0	0	0	0	3.1
Totals		0	157	11-33	.333	4-10	.400	11-15	.733	9	27	36	3.0	16	8	9	3	2	37	3.1

## #11 Smith, Alanna

Opponent	Date	gs	min	Total		3-Pointers		Free throws		Rebounds				pf	a	t/o	blk	stl	pts	avg
				fg-fga	pct	3fg-fga	pct	ft-fta	pct	off	def	tot	avg							
UC DAVIS	11/7/18	*	15	4-7	.571	1-2	.500	7-7	1.000	1	1	2	2.0	4	1	4	1	1	16	16.0
IDAHO	11/11/18	*	24	8-12	.667	2-5	.400	1-1	1.000	4	5	9	5.5	0	4	3	1	2	19	17.5
SAN FRANCISCO	11/15/18	*	26	6-12	.500	5-8	.625	1-2	.500	0	7	7	6.0	1	3	1	4	1	18	17.7
vs FGCU	11/23/18	*	13	1-5	.200	0-1	.000	4-5	.800	2	4	6	6.0	4	2	3	1	1	6	14.8
vs American	11/24/18	*	31	10-18	.556	3-6	.500	2-3	.667	1	7	8	6.4	1	4	3	1	2	25	16.8
at Hawaii	11/25/18	*	25	12-15	.800	3-6	.500	3-3	1.000	2	2	4	6.0	2	3	3	1	0	30	19.0
at Gonzaga	12/2/18	*	24	4-9	.444	2-5	.400	3-6	.500	2	5	7	6.1	5	1	3	2	3	13	18.1
BAYLOR	12/15/18	*	28	7-12	.583	5-9	.556	2-8	.250	0	8	8	6.4	4	2	3	2	1	21	18.5
at Tennessee	12/18/18	*	21	5-6	.833	3-4	.750	3-4	.750	1	2	3	6.0	5	3	2	1	0	16	18.2
at Buffalo	12/21/18	*	38	12-22	.545	4-9	.444	2-2	1.000	3	10	13	6.7	2	5	5	3	0	30	19.4
CSUN	12/29/18	*	17	6-10	.600	0-2	.000	2-2	1.000	1	4	5	6.5	3	1	0	1	0	14	18.9
USC	1/4/19	*	39	8-21	.381	3-9	.333	0-0	.000	2	9	11	6.9	2	2	1	5	0	19	18.9
Totals		12	301	83-149	.557	31-66	.470	30-43	.698	19	64	83	6.9	33	31	31	23	11	227	18.9

## #12 Hull, Lexie

Opponent	Date	gs	min	Total		3-Pointers		Free throws		Rebounds				pf	a	t/o	blk	stl	pts	avg
				fg-fga	pct	3fg-fga	pct	ft-fta	pct	off	def	tot	avg							
UC DAVIS	11/7/18	*	27	5-10	.500	1-4	.250	0-0	.000	3	8	11	11.0	3	0	2	1	4	11	11.0
IDAHO	11/11/18	*	25	6-12	.500	5-10	.500	0-0	.000	2	3	5	8.0	3	0	0	2	2	17	14.0
SAN FRANCISCO	11/15/18	*	25	1-5	.200	0-1	.000	2-2	1.000	4	1	5	7.0	2	3	2	0	2	4	10.7
vs FGCU	11/23/18	dnp		-	-	-	-	-	-	-	-	-	-	-	-	-	-	-	-	-
vs American	11/24/18	dnp		-	-	-	-	-	-	-	-	-	-	-	-	-	-	-	-	-
at Hawaii	11/25/18	dnp		-	-	-	-	-	-	-	-	-	-	-	-	-	-	-	-	-
at Gonzaga	12/2/18	dnp		-	-	-	-	-	-	-	-	-	-	-	-	-	-	-	-	-
at Tennessee	12/18/18	dnp		-	-	-	-	-	-	-	-	-	-	-	-	-	-	-	-	-
at Buffalo	12/21/18	dnp		-	-	-	-	-	-	-	-	-	-	-	-	-	-	-	-	-
Totals		3	77	12-27	.444	6-15	.400	2-2	1.000	9	12	21	7.0	8	3	4	3	8	32	10.7

## 2018-19 Individual Game-by-Game

## #14 Brewer, Mikaela

Opponent	Date	gs	min	Total		3-Pointers		Free throws		Rebounds				pf	a	t/o	blk	stl	pts	avg
				fg-fga	pct	3fg-fga	pct	ft-fta	pct	off	def	tot	avg							
UC DAVIS	11/7/18		2	0-1	.000	0-1	.000	0-0	.000	0	0	0	0.0	0	0	0	1	0	0	0.0
IDAHO	11/11/18		5	1-2	.500	0-1	.000	0-0	.000	0	0	0	0.0	0	1	0	0	0	2	1.0
SAN FRANCISCO	11/15/18		4	1-1	1.000	0-0	.000	2-2	1.000	0	1	1	0.3	1	0	0	0	0	4	2.0
vs FGCU	11/23/18		dnp	-	-	-	-	-	-	-	-	-	-	-	-	-	-	-	-	-
vs American	11/24/18		dnp	-	-	-	-	-	-	-	-	-	-	-	-	-	-	-	-	-
at Hawaii	11/25/18		1	0-0	.000	0-0	.000	0-0	.000	0	0	0	0.3	0	0	0	0	0	0	1.5
at Gonzaga	12/2/18		dnp	-	-	-	-	-	-	-	-	-	-	-	-	-	-	-	-	-
at Tennessee	12/18/18		dnp	-	-	-	-	-	-	-	-	-	-	-	-	-	-	-	-	-
at Buffalo	12/21/18		1	0-0	.000	0-0	.000	0-0	.000	0	0	0	0.2	1	0	0	0	0	0	1.2
CSUN	12/29/18		8	1-3	.333	0-1	.000	0-0	.000	1	1	2	0.5	0	0	1	0	0	2	1.3
Totals		0	21	3-7	.429	0-3	.000	2-2	1.000	1	2	3	0.5	2	0	2	1	0	8	1.3

## #15 Dodson, Maya

Opponent	Date	gs	min	Total		3-Pointers		Free throws		Rebounds				pf	a	t/o	blk	stl	pts	avg
				fg-fga	pct	3fg-fga	pct	ft-fta	pct	off	def	tot	avg							
UC DAVIS	11/7/18		25	5-8	.625	0-0	.000	0-2	.000	4	2	6	6.0	3	1	1	3	2	10	10.0
IDAHO	11/11/18		19	5-8	.625	0-0	.000	0-0	.000	3	2	5	5.5	2	0	0	1	1	10	10.0
SAN FRANCISCO	11/15/18		19	4-7	.571	0-0	.000	2-5	.400	0	3	3	4.7	2	6	0	4	0	10	10.0
vs FGCU	11/23/18		22	3-5	.600	0-0	.000	0-2	.000	2	2	4	4.5	1	1	1	0	0	6	9.0
vs American	11/24/18		18	2-4	.500	0-0	.000	0-0	.000	1	2	3	4.2	1	1	1	1	0	4	8.0
at Hawaii	11/25/18		15	3-4	.750	0-0	.000	1-1	1.000	0	1	1	3.7	2	0	1	2	0	7	7.8
at Gonzaga	12/2/18		20	3-6	.500	0-0	.000	2-5	.400	4	0	4	3.7	2	2	2	2	0	8	7.9
BAYLOR	12/15/18		27	3-7	.429	0-0	.000	3-4	.750	2	3	5	3.9	3	1	0	1	1	9	8.0
at Tennessee	12/18/18		32	5-7	.714	0-0	.000	0-0	.000	4	5	9	4.4	3	2	1	1	0	10	8.2
at Buffalo	12/21/18		17	3-8	.375	0-0	.000	3-3	1.000	1	0	1	4.1	2	1	2	1	0	9	8.3
CSUN	12/29/18		25	8-17	.471	0-0	.000	0-0	.000	3	2	5	4.2	1	1	1	3	1	16	9.0
Totals		0	239	44-81	.543	0-0	.000	11-22	.500	24	22	46	4.2	22	16	10	19	5	99	9.0

## #20 Moschkau, Estella

Opponent	Date	gs	min	Total		3-Pointers		Free throws		Rebounds				pf	a	t/o	blk	stl	pts	avg
				fg-fga	pct	3fg-fga	pct	ft-fta	pct	off	def	tot	avg							
UC DAVIS	11/7/18		4	0-0	.000	0-0	.000	0-0	.000	0	0	0	0.0	0	0	0	0	0	0	0.0
IDAHO	11/11/18		6	1-1	1.000	1-1	1.000	0-0	.000	0	0	0	0.0	0	1	1	0	0	3	1.5
SAN FRANCISCO	11/15/18		5	2-2	1.000	1-1	1.000	0-0	.000	1	0	1	0.3	0	1	1	0	0	5	2.7
vs FGCU	11/23/18		2	1-1	1.000	1-1	1.000	0-0	.000	0	0	0	0.3	0	0	1	0	0	3	2.8
vs American	11/24/18		2	0-0	.000	0-0	.000	0-0	.000	0	0	0	0.2	0	0	0	0	0	0	2.2
at Hawaii	11/25/18		6	0-0	.000	0-0	.000	0-0	.000	0	0	0	0.2	1	0	2	0	2	0	1.8
at Gonzaga	12/2/18		dnp	-	-	-	-	-	-	-	-	-	-	-	-	-	-	-	-	-
at Tennessee	12/18/18		dnp	-	-	-	-	-	-	-	-	-	-	-	-	-	-	-	-	-
at Buffalo	12/21/18		0	0-0	.000	0-0	.000	0-0	.000	0	0	0	0.1	0	0	0	0	0	0	1.6
CSUN	12/29/18		12	1-2	.500	1-2	.500	0-0	.000	0	2	2	0.4	2	0	1	0	0	3	1.8
Totals		0	37	5-6	.833	4-5	.800	0-0	.000	1	2	3	0.4	3	2	6	0	2	14	1.8

## 2018-19 Individual Game-by-Game

## #21 Carrington, DiJonai

Opponent	Date	qs	min	Total		3-Pointers		Free throws		Rebounds				pf	a	t/o	blk	stl	pts	avg	
				fg-fga	pct	3fg-fga	pct	ft-fta	pct	off	def	tot	avg								
UC DAVIS	11/7/18	*	13	0-6	.000	0-2	.000	0-0	.000	0	2	2	2.0	2	1	1	0	2	0	0.0	
IDAHO	11/11/18	*	11	2-8	.250	1-4	.250	1-2	.500	3	1	4	3.0	0	1	0	0	0	6	3.0	
SAN FRANCISCO	11/15/18	*	18	4-7	.571	1-4	.250	0-0	.000	1	4	5	3.7	1	4	2	0	0	9	5.0	
vs FGCU	11/23/18	*	32	2-5	.400	0-0	.000	12-15	.800	0	9	9	5.0	1	3	2	0	1	16	7.8	
vs American	11/24/18	*	22	6-7	.857	0-0	.000	1-1	1.000	2	5	7	5.4	2	1	1	0	2	13	8.8	
at Hawaii	11/25/18	*	19	4-6	.667	2-2	1.000	2-3	.667	1	3	4	5.2	1	4	2	0	3	12	9.3	
at Gonzaga	12/2/18	*	27	5-13	.385	1-5	.200	2-5	.400	0	3	3	4.9	3	1	2	0	3	13	9.9	
BAYLOR	12/15/18	*	27	3-6	.500	1-1	1.000	3-7	.429	1	5	6	5.0	3	2	1	1	1	10	9.9	
at Tennessee	12/18/18	*	38	11-15	.733	4-5	.800	7-9	.778	0	13	13	5.9	1	2	5	0	1	33	12.4	
at Buffalo	12/21/18	*	35	1-7	.143	0-3	.000	2-2	1.000	1	9	10	6.3	3	0	5	1	2	4	11.6	
CSUN	12/29/18	*	26	2-6	.333	1-3	.333	0-0	.000	2	10	12	6.8	1	2	1	0	3	5	11.0	
USC	1/4/19	*	29	4-13	.308	0-4	.000	6-9	.667	2	5	7	6.8	2	0	2	0	1	14	11.3	
Totals			12	297	44-99	.444	11-33	.333	36-53	.679	13	69	82	6.8	20	21	24	7	19	135	11.3

## #22 Romano, Alexa

Opponent	Date	qs	min	Total		3-Pointers		Free throws		Rebounds				pf	a	t/o	blk	stl	pts	avg	
				fg-fga	pct	3fg-fga	pct	ft-fta	pct	off	def	tot	avg								
UC DAVIS	11/7/18		9	2-3	.667	1-2	.500	1-1	1.000	0	2	2	2.0	0	0	1	0	0	6	6.0	
IDAHO	11/11/18		7	0-3	.000	0-2	.000	0-0	.000	0	0	0	1.0	2	1	0	0	0	0	3.0	
SAN FRANCISCO	11/15/18		5	0-0	.000	0-0	.000	0-0	.000	0	0	0	0.7	1	0	0	0	0	2.0		
vs FGCU	11/23/18		8	1-3	.333	1-3	.333	0-0	.000	0	0	0	0.5	0	0	0	0	0	3	2.3	
vs American	11/24/18		4	0-1	.000	0-1	.000	0-0	.000	0	0	0	0.4	1	0	0	0	0	1.8		
at Hawaii	11/25/18		2	0-0	.000	0-0	.000	0-0	.000	0	0	0	0.3	0	0	0	0	0	1.5		
at Gonzaga	12/2/18		0	0-0	.000	0-0	.000	0-0	.000	0	0	0	0.3	0	0	0	0	0	1.3		
BAYLOR	12/15/18		1	0-0	.000	0-0	.000	0-0	.000	0	0	0	0.3	0	0	0	0	0	1.1		
at Tennessee	12/18/18		dnp	-	-	-	-	-	-	-	-	-	-	-	-	-	-	-	-		
at Buffalo	12/21/18		1	0-1	.000	0-1	.000	0-0	.000	0	0	0	0.2	0	0	1	0	0	1.0		
CSUN	12/29/18		5	0-1	.000	0-1	.000	2-2	1.000	1	0	1	0.3	0	1	0	0	2	1.1		
Totals			0	42	3-12	.250	2-10	.200	3-3	1.000	1	2	3	0.3	4	2	2	0	0	11	1.1

## #23 Williams, Kiana

Opponent	Date	qs	min	Total		3-Pointers		Free throws		Rebounds				pf	a	t/o	blk	stl	pts	avg	
				fg-fga	pct	3fg-fga	pct	ft-fta	pct	off	def	tot	avg								
UC DAVIS	11/7/18	*	18	5-8	.625	3-5	.600	1-2	.500	0	1	1	1.0	0	3	2	0	0	14	14.0	
IDAHO	11/11/18	*	28	7-10	.700	4-7	.571	1-1	1.000	0	3	3	2.0	1	9	2	0	1	19	16.5	
SAN FRANCISCO	11/15/18	*	26	8-13	.615	4-6	.667	1-1	1.000	0	0	0	1.3	1	3	2	0	0	21	18.0	
vs FGCU	11/23/18	*	35	6-10	.600	5-8	.625	0-0	.000	0	6	6	2.5	0	2	4	0	1	17	17.8	
vs American	11/24/18	*	33	3-12	.250	2-6	.333	1-2	.500	0	0	0	2.0	2	7	3	0	0	9	16.0	
at Hawaii	11/25/18	*	35	4-9	.444	0-5	.000	1-2	.500	0	4	4	2.3	0	3	1	0	2	9	14.8	
at Gonzaga	12/2/18	*	40	7-17	.412	2-6	.333	2-2	1.000	0	1	1	2.1	2	3	4	0	1	18	15.3	
BAYLOR	12/15/18	*	40	5-16	.313	3-10	.300	0-0	.000	0	1	1	2.0	2	5	2	0	2	13	15.0	
at Tennessee	12/18/18	*	38	5-13	.385	3-7	.429	3-4	.750	0	5	5	2.3	3	7	6	0	2	16	15.1	
at Buffalo	12/21/18	*	40	2-9	.222	1-6	.167	2-4	.500	0	2	2	2.3	3	7	1	0	2	7	14.3	
CSUN	12/29/18	*	21	0-6	.000	0-4	.000	0-0	.000	0	2	2	2.3	0	1	1	0	0	13.0		
USC	1/4/19	*	40	8-18	.444	4-11	.364	2-3	.667	0	4	4	2.4	2	4	7	0	0	22	13.8	
Totals			12	394	60-141	.426	31-81	.383	14-21	.667	0	29	29	2.4	16	54	35	0	11	165	13.8



## 2018-19 Individual Game-by-Game

## #24 Hull, Lacie

Opponent	Date	gs	min	Total		3-Pointers		Free throws		Rebounds				pf	a	t/o	blk	stl	pts	avg
				fg-fga	pct	3fg-fga	pct	ft-fga	pct	off	def	tot	avg							
UC DAVIS	11/7/18		17	1-5	.200	0-3	.000	0-0	.000	0	3	3	3.0	0	0	1	0	2	2	2.0
IDAHO	11/11/18		12	0-2	.000	0-0	.000	0-0	.000	2	0	2	2.5	3	2	0	1	0	0	1.0
SAN FRANCISCO	11/15/18		13	2-5	.400	2-4	.500	0-0	.000	0	1	1	2.0	2	0	0	0	0	6	2.7
vs FGCU	11/23/18		22	1-3	.333	1-2	.500	0-0	.000	1	3	4	2.5	3	4	0	0	2	3	2.8
vs American	11/24/18		33	0-3	.000	0-1	.000	0-0	.000	0	3	3	2.6	1	0	2	0	7	0	2.2
at Hawaii	11/25/18		28	3-4	.750	2-3	.667	0-0	.000	0	3	3	2.7	0	6	2	2	3	8	3.2
at Gonzaga	12/2/18	*	37	2-3	.667	1-2	.500	4-4	1.000	1	0	1	2.4	2	3	1	0	3	9	4.0
BAYLOR	12/15/18	*	22	1-6	.167	1-3	.333	0-0	.000	2	0	2	2.4	3	0	1	0	1	3	3.9
at Tennessee	12/18/18	*	32	5-8	.625	4-5	.800	0-0	.000	1	2	3	2.4	3	1	0	1	0	14	5.0
at Buffalo	12/21/18	*	24	0-1	.000	0-1	.000	0-0	.000	0	5	5	2.7	2	2	2	0	0	0	4.5
CSUN	12/29/18	*	23	4-7	.571	2-5	.400	0-0	.000	2	2	4	2.8	1	2	1	0	3	10	5.0
USC	1/4/19	*	36	3-7	.429	1-4	.250	0-0	.000	0	8	8	3.3	3	0	1	1	2	7	5.2
Totals			6	22-54	.407	14-33	.424	4-4	1.000	9	30	39	3.3	23	20	11	5	23	62	5.2

## #54 Brown, Jenna

Opponent	Date	gs	min	Total		3-Pointers		Free throws		Rebounds				pf	a	t/o	blk	stl	pts	avg
				fg-fga	pct	3fg-fga	pct	ft-fga	pct	off	def	tot	avg							
UC DAVIS	11/7/18		19	2-2	1.000	0-0	.000	0-2	.000	0	3	3	3.0	1	2	3	0	0	4	4.0
IDAHO	11/11/18		13	3-6	.500	1-4	.250	0-0	.000	0	3	3	3.0	0	3	1	0	0	7	5.5
SAN FRANCISCO	11/15/18		9	1-4	.250	0-1	.000	1-2	.500	0	2	2	2.7	1	0	0	0	0	3	4.7
vs FGCU	11/23/18		4	0-2	.000	0-0	.000	0-0	.000	0	0	0	2.0	0	1	0	0	0	0	3.5
vs American	11/24/18		12	1-4	.250	0-1	.000	2-3	.667	0	3	3	2.2	0	1	0	0	0	4	3.6
at Hawaii	11/25/18		14	0-1	.000	0-1	.000	0-0	.000	0	0	0	1.8	2	0	0	0	0	0	3.0
at Gonzaga	12/2/18		7	0-0	.000	0-0	.000	1-2	.500	0	0	0	1.6	1	1	1	0	0	1	2.7
BAYLOR	12/15/18		8	0-0	.000	0-0	.000	0-0	.000	0	1	1	1.5	0	2	0	0	0	0	2.4
at Tennessee	12/18/18		9	1-4	.250	0-1	.000	1-2	.500	0	1	1	1.4	0	2	0	0	0	3	2.4
at Buffalo	12/21/18		6	0-1	.000	0-0	.000	0-0	.000	0	1	1	1.4	2	1	1	0	0	0	2.2
CSUN	12/29/18		22	1-6	.167	0-0	.000	0-2	.000	2	5	7	1.9	0	3	2	0	0	2	2.2
USC	1/4/19		7	1-2	.500	0-0	.000	0-0	.000	0	0	0	1.8	0	3	1	0	0	2	2.2
Totals			0	10-32	.313	1-8	.125	5-13	.385	2	19	21	1.8	7	19	9	0	0	26	2.2

## Stanford Women's Basketball Individual Career History

### Brewer, Mikaela

Season	gp-gs	min/avg	Total		3-Point		F-Throws		Rebounds				Scoring							
			fg-fga	pct	fg-fga	pct	ft-fta	pct	off	def	tot	avg	pf	fo	ast	to	blk	stl	pts	avg
2016-17	10-0	60/6.0	7-23	.304	5-16	.313	0-0	.000	1	5	6	0.6	3	0	4	7	0	1	19	1.9
2017-18	17-0	31/1.8	2-14	.143	1-9	.111	0-0	.000	0	1	1	0.1	0	0	2	3	0	0	5	0.3
2018-19	6-0	21/3.5	3-7	.429	0-3	.000	2-2	1.000	1	2	3	0.5	2	0	0	2	1	0	8	1.3
<b>TOTAL</b>	<b>33-0</b>	<b>112/3.4</b>	<b>12-44</b>	<b>.273</b>	<b>6-28</b>	<b>.214</b>	<b>2-2</b>	<b>1.000</b>	<b>2</b>	<b>8</b>	<b>10</b>	<b>0.3</b>	<b>5</b>	<b>0</b>	<b>6</b>	<b>12</b>	<b>1</b>	<b>1</b>	<b>32</b>	<b>1.0</b>

## SINGLE-GAME HIGHS [all-time ranking]:

Points: 6, Cal Poly -- 11/11/16

Rebounds: 2, Cal Poly -- 11/11/16; CSUN -- 12/29/18

Assists: 2, CSUN -- 11/20/16; vs Wichita St. -- 11/25/16

Steals: 1, UC Davis -- 12/4/16

Blocks: 1, UC Davis -- 11/7/18; UC Davis -- 11/07/18

FG made: 2, Cal Poly -- 11/11/16; vs Wichita St. -- 11/25/16

FG attempts: 6, CSUN -- 11/20/16; vs Wichita St. -- 11/25/16

3FG made: 2, Cal Poly -- 11/11/16

3FG attempts: 5, vs Wichita St. -- 11/25/16

FT made: 2, San Francisco -- 11/15/18; San Francisco -- 11/15/18

FT attempts: 2, San Francisco -- 11/15/18; San Francisco -- 11/15/18

### Brown, Jenna

Season	gp-gs	min/avg	Total		3-Point		F-Throws		Rebounds				Scoring							
			fg-fga	pct	fg-fga	pct	ft-fta	pct	off	def	tot	avg	pf	fo	ast	to	blk	stl	pts	avg
2018-19	12-0	130/10.8	10-32	.313	1-8	.125	5-13	.385	2	19	21	1.8	7	0	19	9	0	0	26	2.2
<b>TOTAL</b>	<b>12-0</b>	<b>130/10.8</b>	<b>10-32</b>	<b>.313</b>	<b>1-8</b>	<b>.125</b>	<b>5-13</b>	<b>.385</b>	<b>2</b>	<b>19</b>	<b>21</b>	<b>1.8</b>	<b>7</b>	<b>0</b>	<b>19</b>	<b>9</b>	<b>0</b>	<b>0</b>	<b>26</b>	<b>2.2</b>

## SINGLE-GAME HIGHS [all-time ranking]:

Points: 7, Idaho -- 11/11/18; Idaho -- 11/11/18

Rebounds: 7, CSUN -- 12/29/18

Assists: 3, 4 times

FG made: 3, Idaho -- 11/11/18; Idaho -- 11/11/18

FG attempts: 6, Idaho -- 11/11/18; CSUN -- 12/29/18; Idaho -- 11/11/18

3FG made: 1, Idaho -- 11/11/18; Idaho -- 11/11/18

3FG attempts: 4, Idaho -- 11/11/18; Idaho -- 11/11/18

FT made: 2, vs American -- 11/24/18

FT attempts: 3, vs American -- 11/24/18

### Carrington, DiJonai

Season	gp-gs	min/avg	Total		3-Point		F-Throws		Rebounds				Scoring							
			fg-fga	pct	fg-fga	pct	ft-fta	pct	off	def	tot	avg	pf	fo	ast	to	blk	stl	pts	avg
2016-17	35-0	274/7.8	35-79	.443	5-21	.238	11-19	.579	21	59	80	2.3	36	0	14	24	3	19	86	2.5
2017-18	32-7	721/22.5	107-267	.401	30-107	.280	39-57	.684	51	127	178	5.6	65	0	58	69	7	46	283	8.8
2018-19	12-12	297/24.8	44-99	.444	11-33	.333	36-53	.679	13	69	82	6.8	20	0	21	24	2	19	135	11.3
<b>TOTAL</b>	<b>79-19</b>	<b>1292/16.4</b>	<b>186-445</b>	<b>.418</b>	<b>46-161</b>	<b>.286</b>	<b>86-129</b>	<b>.667</b>	<b>85</b>	<b>255</b>	<b>340</b>	<b>4.3</b>	<b>121</b>	<b>0</b>	<b>93</b>	<b>117</b>	<b>12</b>	<b>84</b>	<b>504</b>	<b>6.4</b>

## SINGLE-GAME HIGHS [all-time ranking]:

Points: 33, at Tennessee -- 12/18/18

Rebounds: 22, UC Riverside -- 11/17/17; UC Riverside -- 11/17/17

Assists: 5, 4 times

Steals: 4, at USC -- 1/19/18

Blocks: 1, 13 times

FG made: 11, at Tennessee -- 12/18/18

FG attempts: 17, UC Riverside -- 11/17/17; UC Riverside -- 11/17/17

3FG made: 4, at Tennessee -- 12/18/18

3FG attempts: 8, 4 times

FT made: 12, vs FGCU -- 11/23/18

FT attempts: 15, vs FGCU -- 11/23/18

## Stanford Women's Basketball Individual Career History

### Coffee, Shannon

Season	gp-gs	min/avg	Total		3-Point		F-Throws		Rebounds				Scoring							
			fg-fga	pct	fg-fga	pct	ft-fta	pct	off	def	tot	avg	pf	fo	ast	to	blk	stl	pts	avg
2015-16	12-0	45/3.8	9-21	.429	0-2	.000	3-13	.231	3	10	13	1.1	3	0	1	7	1	0	21	1.8
2016-17	20-0	86/4.3	17-27	.630	1-4	.250	9-17	.529	4	17	21	1.1	9	0	3	10	3	2	44	2.2
2017-18	27-2	112/4.1	12-38	.316	7-20	.350	1-2	.500	5	19	24	0.9	12	0	6	14	4	3	32	1.2
2018-19	12-0	80/6.7	10-20	.500	4-9	.444	2-2	1.000	5	11	16	1.3	3	0	5	5	2	0	26	2.2
<b>TOTAL</b>	<b>71-2</b>	<b>323/4.5</b>	<b>48-106</b>	<b>.453</b>	<b>12-35</b>	<b>.343</b>	<b>15-34</b>	<b>.441</b>	<b>17</b>	<b>57</b>	<b>74</b>	<b>1.0</b>	<b>27</b>	<b>0</b>	<b>15</b>	<b>36</b>	<b>10</b>	<b>5</b>	<b>123</b>	<b>1.7</b>

## SINGLE-GAME HIGHS [all-time ranking]:

Points: 14, at Baylor -- 12/3/17

Rebounds: 7, vs Wichita St. -- 11/25/16

Assists: 3, UNLV -- 12/16/17

Steals: 1, 5 times

Blocks: 1, 11 times

FG made: 5, vs Wichita St. -- 11/25/16; at Baylor -- 12/3/17

FG attempts: 11, at Baylor -- 12/3/17

3FG made: 4, at Baylor -- 12/3/17

3FG attempts: 8, at Baylor -- 12/3/17

FT made: 3, vs Northeastern -- 11/24/16; vs Wichita St. -- 11/25/16

FT attempts: 10, CSU Bakersfield -- 12/22/15

### Dodson, Maya

Season	gp-gs	min/avg	Total		3-Point		F-Throws		Rebounds				Scoring							
			fg-fga	pct	fg-fga	pct	ft-fta	pct	off	def	tot	avg	pf	fo	ast	to	blk	stl	pts	avg
2017-18	33-4	372/11.3	51-103	.495	0-0	.000	13-33	.394	32	35	67	2.0	38	1	5	26	27	2	115	3.5
2018-19	11-0	239/21.7	44-81	.543	0-0	.000	11-22	.500	24	22	46	4.2	22	0	16	10	19	5	99	9.0
<b>TOTAL</b>	<b>44-4</b>	<b>611/13.9</b>	<b>95-184</b>	<b>.516</b>	<b>0-0</b>	<b>.000</b>	<b>24-55</b>	<b>.436</b>	<b>56</b>	<b>57</b>	<b>113</b>	<b>2.6</b>	<b>60</b>	<b>1</b>	<b>21</b>	<b>36</b>	<b>46</b>	<b>7</b>	<b>214</b>	<b>4.9</b>

## SINGLE-GAME HIGHS [all-time ranking]:

Points: 16, CSUN -- 12/29/18

Rebounds: 9, at Tennessee -- 12/18/18

Assists: 6, San Francisco -- 11/15/18; San Francisco -- 11/15/18

Steals: 2, UC Davis -- 11/7/18; UC Davis -- 11/07/18

Blocks: 4, San Francisco -- 11/15/18; Western Illinois -- 12/18/17; San Francisco -- 11/15/18

FG made: 8, CSUN -- 12/29/18

FG attempts: 17, CSUN -- 12/29/18

FT made: 3, Baylor -- 12/15/18; at Buffalo -- 12/21/18

FT attempts: 5, San Francisco -- 11/15/18; at Gonzaga -- 12/2/18; San Francisco -- 11/15/18

### Fingall, Nadia

Season	gp-gs	min/avg	Total		3-Point		F-Throws		Rebounds				Scoring							
			fg-fga	pct	fg-fga	pct	ft-fta	pct	off	def	tot	avg	pf	fo	ast	to	blk	stl	pts	avg
2016-17	36-8	419/11.6	67-132	.508	2-13	.154	19-37	.514	42	51	93	2.6	52	0	22	30	13	13	155	4.3
2017-18	34-0	398/11.7	41-92	.446	13-31	.419	18-26	.692	32	75	107	3.1	52	1	19	22	13	16	113	3.3
2018-19	12-12	244/20.3	40-80	.500	5-17	.294	11-21	.524	28	31	59	4.9	23	0	20	16	5	5	96	8.0
<b>TOTAL</b>	<b>82-20</b>	<b>1061/12.9</b>	<b>148-304</b>	<b>.487</b>	<b>20-61</b>	<b>.328</b>	<b>48-84</b>	<b>.571</b>	<b>102</b>	<b>157</b>	<b>259</b>	<b>3.2</b>	<b>127</b>	<b>1</b>	<b>61</b>	<b>68</b>	<b>31</b>	<b>34</b>	<b>364</b>	<b>4.4</b>

## SINGLE-GAME HIGHS [all-time ranking]:

Points: 24, vs FGCU -- 11/23/18

Rebounds: 8, 5 times

Assists: 5, vs FGCU -- 11/23/18

Steals: 3, Utah -- 2/12/17

Blocks: 2, 6 times

FG made: 11, vs FGCU -- 11/23/18

FG attempts: 14, vs FGCU -- 11/23/18

3FG made: 2, 4 times

3FG attempts: 4, vs American -- 11/24/18; at Baylor -- 12/3/17

FT made: 4, at Arizona -- 1/1/17

FT attempts: 5, Idaho -- 11/11/18; at George Washington -- 12/21/16; Idaho -- 11/11/18

## Stanford Women's Basketball Individual Career History

Hull, Lacie

Season	gp-gs	min/avg	Total		3-Point		F-Throws		Rebounds				Scoring							
			fg-fga	pct	fg-fga	pct	ft-fa	pct	off	def	tot	avg	pf	fo	ast	to	blk	stl	pts	avg
2018-19	12-6	299/24.9	22-54	.407	14-33	.424	4-4	1.000	9	30	39	3.3	23	0	20	11	5	23	62	5.2
<b>TOTAL</b>	<b>12-6</b>	<b>299/24.9</b>	<b>22-54</b>	<b>.407</b>	<b>14-33</b>	<b>.424</b>	<b>4-4</b>	<b>1.000</b>	<b>9</b>	<b>30</b>	<b>39</b>	<b>3.3</b>	<b>23</b>	<b>0</b>	<b>20</b>	<b>11</b>	<b>5</b>	<b>23</b>	<b>62</b>	<b>5.2</b>

## SINGLE-GAME HIGHS [all-time ranking]:

Points: 14, at Tennessee -- 12/18/18

Rebounds: 8, USC -- 1/4/19

Assists: 6, at Hawaii -- 11/25/18

Steals: 7, vs American -- 11/24/18

Blocks: 2, at Hawaii -- 11/25/18

FG made: 5, at Tennessee -- 12/18/18

FG attempts: 8, at Tennessee -- 12/18/18

3FG made: 4, at Tennessee -- 12/18/18

3FG attempts: 5, at Tennessee -- 12/18/18; CSUN -- 12/29/18

FT made: 4, at Gonzaga -- 12/2/18

FT attempts: 4, at Gonzaga -- 12/2/18

Hull, Lexie

Season	gp-gs	min/avg	Total		3-Point		F-Throws		Rebounds				Scoring							
			fg-fga	pct	fg-fga	pct	ft-fa	pct	off	def	tot	avg	pf	fo	ast	to	blk	stl	pts	avg
2018-19	3-3	77/25.7	12-27	.444	6-15	.400	2-2	1.000	9	12	21	7.0	8	0	3	4	3	8	32	10.7
<b>TOTAL</b>	<b>3-3</b>	<b>77/25.7</b>	<b>12-27</b>	<b>.444</b>	<b>6-15</b>	<b>.400</b>	<b>2-2</b>	<b>1.000</b>	<b>9</b>	<b>12</b>	<b>21</b>	<b>7.0</b>	<b>8</b>	<b>0</b>	<b>3</b>	<b>4</b>	<b>3</b>	<b>8</b>	<b>32</b>	<b>10.7</b>

## SINGLE-GAME HIGHS [all-time ranking]:

Points: 17, Idaho -- 11/11/18; Idaho -- 11/11/18

Rebounds: 11, UC Davis -- 11/7/18; UC Davis -- 11/07/18

Assists: 3, San Francisco -- 11/15/18; San Francisco -- 11/15/18

Steals: 4, UC Davis -- 11/7/18; UC Davis -- 11/07/18

Blocks: 2, Idaho -- 11/11/18; Idaho -- 11/11/18

FG made: 6, Idaho -- 11/11/18; Idaho -- 11/11/18

FG attempts: 12, Idaho -- 11/11/18; Idaho -- 11/11/18

3FG made: 5, Idaho -- 11/11/18; Idaho -- 11/11/18

3FG attempts: 10, Idaho -- 11/11/18; Idaho -- 11/11/18

FT made: 2, San Francisco -- 11/15/18; San Francisco -- 11/15/18

FT attempts: 2, San Francisco -- 11/15/18; San Francisco -- 11/15/18

Jerome, Alyssa

Season	gp-gs	min/avg	Total		3-Point		F-Throws		Rebounds				Scoring							
			fg-fga	pct	fg-fga	pct	ft-fa	pct	off	def	tot	avg	pf	fo	ast	to	blk	stl	pts	avg
2017-18	34-1	337/9.9	28-70	.400	9-31	.290	4-6	.667	11	25	36	1.1	27	0	14	22	3	1	69	2.0
2018-19	12-0	157/13.1	11-33	.333	4-10	.400	11-15	.733	9	27	36	3.0	16	0	8	9	3	2	37	3.1
<b>TOTAL</b>	<b>46-1</b>	<b>494/10.7</b>	<b>39-103</b>	<b>.379</b>	<b>13-41</b>	<b>.317</b>	<b>15-21</b>	<b>.714</b>	<b>20</b>	<b>52</b>	<b>72</b>	<b>1.6</b>	<b>43</b>	<b>0</b>	<b>22</b>	<b>31</b>	<b>6</b>	<b>3</b>	<b>106</b>	<b>2.3</b>

## SINGLE-GAME HIGHS [all-time ranking]:

Points: 8, at Ohio State -- 11/10/17; at Ohio State -- 11/10/17

Rebounds: 8, UC Davis -- 11/07/18; UC Davis -- 11/7/18

Assists: 2, 7 times

Steals: 1, at USC -- 1/19/18; at Hawaii -- 11/25/18; at Buffalo -- 12/21/18

Blocks: 2, San Francisco -- 11/15/18; San Francisco -- 11/15/18; UNLV -- 12/16/17

FG made: 3, 4 times

FG attempts: 6, vs Kent State -- 11/23/17; vs Kent State -- 11/23/17

3FG made: 2, at Ohio State -- 11/10/17; at Ohio State -- 11/10/17; at Gonzaga -- 12/2/18

3FG attempts: 4, vs Kent State -- 11/23/17; vs Kent State -- 11/23/17

FT made: 4, at Hawaii -- 11/25/18

FT attempts: 6, at Hawaii -- 11/25/18



## Stanford Women's Basketball Individual Career History

### Moschkau, Estella

Season	gp-gs	min/avg	Total		3-Point		F-Throws		Rebounds				Scoring							
			fg-fga	pct	fg-fga	pct	ft-fa	pct	off	def	tot	avg	pf	fo	ast	to	blk	stl	pts	avg
2017-18	23-0	49/2.1	4-9	.444	3-7	.429	1-2	.500	2	2	4	0.2	4	0	2	0	0	0	12	0.5
2018-19	8-0	37/4.6	5-6	.833	4-5	.800	0-0	.000	1	2	3	0.4	3	0	2	6	0	2	14	1.8
<b>TOTAL</b>	<b>31-0</b>	<b>86/2.8</b>	<b>9-15</b>	<b>.600</b>	<b>7-12</b>	<b>.583</b>	<b>1-2</b>	<b>.500</b>	<b>3</b>	<b>4</b>	<b>7</b>	<b>0.2</b>	<b>7</b>	<b>0</b>	<b>4</b>	<b>6</b>	<b>0</b>	<b>2</b>	<b>26</b>	<b>0.8</b>

## SINGLE-GAME HIGHS [all-time ranking]:

Points: 5, San Francisco -- 11/15/18; San Francisco -- 11/15/18

Rebounds: 2, at Arizona -- 1/5/18; CSUN -- 12/29/18

Assists: 1, 6 times

Steals: 2, at Hawaii -- 11/25/18

FG made: 2, San Francisco -- 11/15/18; San Francisco -- 11/15/18

FG attempts: 2, 6 times

3FG made: 1, 10 times

3FG attempts: 2, CSU Bakersfield -- 11/19/17; CSU Bakersfield -- 11/19/17; CSUN -- 12/29/18

FT made: 1, Arizona -- 1/28/18

FT attempts: 2, Arizona -- 1/28/18

### Romano, Alexa

Season	gp-gs	min/avg	Total		3-Point		F-Throws		Rebounds				Scoring							
			fg-fga	pct	fg-fga	pct	ft-fa	pct	off	def	tot	avg	pf	fo	ast	to	blk	stl	pts	avg
2015-16	17-0	59/3.5	4-10	.400	2-5	.400	2-2	1.000	1	4	5	0.3	2	0	3	4	2	0	12	0.7
2016-17	22-0	132/6.0	8-25	.320	5-14	.357	3-6	.500	3	16	19	0.9	5	0	12	10	0	8	24	1.1
2017-18	29-8	277/9.6	28-78	.359	12-41	.293	8-11	.727	5	22	27	0.9	11	0	15	15	2	12	76	2.6
2018-19	10-0	42/4.2	3-12	.250	2-10	.200	3-3	1.000	1	2	3	0.3	4	0	2	2	0	0	11	1.1
<b>TOTAL</b>	<b>78-8</b>	<b>510/6.5</b>	<b>43-125</b>	<b>.344</b>	<b>21-70</b>	<b>.300</b>	<b>16-22</b>	<b>.727</b>	<b>10</b>	<b>44</b>	<b>54</b>	<b>0.7</b>	<b>22</b>	<b>0</b>	<b>32</b>	<b>31</b>	<b>4</b>	<b>20</b>	<b>123</b>	<b>1.6</b>

## SINGLE-GAME HIGHS [all-time ranking]:

Points: 13, CSU Bakersfield -- 11/19/17; CSU Bakersfield -- 11/19/17; at San Francisco -- 11/29/17

Rebounds: 5, Yale -- 12/28/16

Assists: 3, Cal Poly -- 11/11/16; UNLV -- 12/16/17

Steals: 2, 4 times

Blocks: 1, 4 times

FG made: 5, vs Belmont -- 11/24/17; at San Francisco -- 11/29/17

FG attempts: 11, UC Riverside -- 11/17/17; UC Riverside -- 11/17/17

3FG made: 3, CSU Bakersfield -- 11/19/17; CSU Bakersfield -- 11/19/17; at San Francisco -- 11/29/17

3FG attempts: 7, UC Riverside -- 11/17/17; UC Riverside -- 11/17/17

FT made: 2, 7 times

FT attempts: 2, 11 times

### Smith, Alanna

Season	gp-gs	min/avg	Total		3-Point		F-Throws		Rebounds				Scoring							
			fg-fga	pct	fg-fga	pct	ft-fa	pct	off	def	tot	avg	pf	fo	ast	to	blk	stl	pts	avg
2015-16	34-0	400/11.8	67-155	.432	20-60	.333	29-44	.659	28	52	80	2.4	63	1	13	43	24	5	183	5.4
2016-17	38-3	735/19.3	133-286	.465	19-60	.317	62-90	.689	66	141	207	5.4	88	4	34	42	61	25	347	9.1
2017-18	35-35	995/28.4	198-418	.474	35-116	.302	43-81	.531	92	154	246	7.0	96	2	41	88	62	45	474	13.5
2018-19	12-12	301/25.1	83-149	.557	31-66	.470	30-43	.698	19	64	83	6.9	33	2	31	31	23	11	227	18.9
<b>TOTAL</b>	<b>119-50</b>	<b>2431/20.4</b>	<b>481-1008</b>	<b>.477</b>	<b>105-302</b>	<b>.348</b>	<b>164-258</b>	<b>.636</b>	<b>205</b>	<b>411</b>	<b>616</b>	<b>5.2</b>	<b>280</b>	<b>9</b>	<b>119</b>	<b>204</b>	<b>170</b>	<b>86</b>	<b>1231</b>	<b>10.3</b>

## SINGLE-GAME HIGHS [all-time ranking]:

Points: 33, vs Ohio State -- 11/25/17

Rebounds: 16, vs Ohio State -- 11/25/17

Assists: 5, at Buffalo -- 12/21/18

Steals: 6, at California -- 2/17/18

Blocks: 6, vs New Mexico State -- 3/18/17

FG made: 14, vs Ohio State -- 11/25/17

FG attempts: 24, Western Illinois -- 12/18/17; at California -- 2/17/18

3FG made: 6, vs Dayton -- 11/28/15

3FG attempts: 11, at California -- 2/17/18

FT made: 7, UC Davis -- 11/07/18; UC Davis -- 11/7/18

FT attempts: 8, Baylor -- 12/15/18; Cornell -- 12/19/15; at California -- 2/16/17

## Stanford Women's Basketball Individual Career History

### Snizek, Marta

Season	gp-gs	min/avg	Total		3-Point		F-Throws		Rebounds				Scoring							
			fg-fga	pct	fg-fga	pct	ft-fta	pct	off	def	tot	avg	pf	fo	ast	to	blk	stl	pts	avg
2015-16	35-9	656/18.7	35-99	.354	4-17	.235	28-42	.667	8	48	56	1.6	27	0	109	63	1	21	102	2.9
2016-17	38-9	948/24.9	56-149	.376	6-20	.300	54-75	.720	6	100	106	2.8	64	0	169	93	3	51	172	4.5
2017-18	35-32	971/27.7	56-156	.359	20-59	.339	61-90	.678	7	115	122	3.5	68	1	150	78	3	38	193	5.5
<b>TOTAL</b>	<b>108-50</b>	<b>2575/23.8</b>	<b>147-404</b>	<b>.364</b>	<b>30-96</b>	<b>.313</b>	<b>143-207</b>	<b>.691</b>	<b>21</b>	<b>263</b>	<b>284</b>	<b>2.6</b>	<b>159</b>	<b>1</b>	<b>428</b>	<b>234</b>	<b>7</b>	<b>110</b>	<b>467</b>	<b>4.3</b>

## SINGLE-GAME HIGHS [all-time ranking]:

Points: 13, Arizona State -- 1/26/18; at Washington -- 2/23/18

Rebounds: 10, USC -- 12/31/17

Assists: 13, vs Washington -- 3/4/16

Steals: 6, Oregon State -- 1/8/17

Blocks: 1, 7 times

FG made: 5, Arizona State -- 1/26/18; vs Notre Dame -- 3/25/16

FG attempts: 12, vs Belmont -- 11/24/17

3FG made: 3, at Arizona State -- 1/7/18; Utah -- 2/9/18

3FG attempts: 8, vs Belmont -- 11/24/17

FT made: 6, UC Riverside -- 11/17/17; UC Riverside -- 11/17/17; vs USC -- 3/2/18

FT attempts: 9, Tennessee -- 12/16/15

### Williams, Kiana

Season	gp-gs	min/avg	Total		3-Point		F-Throws		Rebounds				Scoring							
			fg-fga	pct	fg-fga	pct	ft-fta	pct	off	def	tot	avg	pf	fo	ast	to	blk	stl	pts	avg
2017-18	35-26	899/25.7	128-309	.414	71-185	.384	36-44	.818	4	54	58	1.7	38	0	67	40	5	30	363	10.4
2018-19	12-12	394/32.8	60-141	.426	31-81	.383	14-21	.667	0	29	29	2.4	16	0	54	35	0	11	165	13.8
<b>TOTAL</b>	<b>47-38</b>	<b>1293/27.5</b>	<b>188-450</b>	<b>.418</b>	<b>102-266</b>	<b>.383</b>	<b>50-65</b>	<b>.769</b>	<b>4</b>	<b>83</b>	<b>87</b>	<b>1.9</b>	<b>54</b>	<b>0</b>	<b>121</b>	<b>75</b>	<b>5</b>	<b>41</b>	<b>528</b>	<b>11.2</b>

## SINGLE-GAME HIGHS [all-time ranking]:

Points: 26, California -- 2/15/18

Rebounds: 6, vs FGCU -- 11/23/18; Utah -- 2/9/18

Assists: 9, Idaho -- 11/11/18; Idaho -- 11/11/18

Steals: 4, California -- 2/15/18

Blocks: 1, 6 times

FG made: 9, vs Arizona State -- 3/3/18

FG attempts: 18, USC -- 1/4/19

3FG made: 6, vs Arizona State -- 3/3/18

3FG attempts: 11, 4 times

FT made: 7, California -- 2/15/18

FT attempts: 9, California -- 2/15/18

### Wilson, Anna

Season	gp-gs	min/avg	Total		3-Point		F-Throws		Rebounds				Scoring							
			fg-fga	pct	fg-fga	pct	ft-fta	pct	off	def	tot	avg	pf	fo	ast	to	blk	stl	pts	avg
2016-17	6-0	48/8.0	6-13	.462	4-8	.500	1-3	.333	0	6	6	1.0	4	0	5	7	0	3	17	2.8
2017-18	21-2	224/10.7	24-81	.296	20-69	.290	2-4	.500	1	22	23	1.1	22	0	8	13	1	10	70	3.3
2018-19	8-3	82/10.3	7-23	.304	4-18	.222	5-6	.833	3	12	15	1.9	11	0	7	3	0	7	23	2.9
<b>TOTAL</b>	<b>35-5</b>	<b>354/10.1</b>	<b>37-117</b>	<b>.316</b>	<b>28-95</b>	<b>.295</b>	<b>8-13</b>	<b>.615</b>	<b>4</b>	<b>40</b>	<b>44</b>	<b>1.3</b>	<b>37</b>	<b>0</b>	<b>20</b>	<b>23</b>	<b>1</b>	<b>20</b>	<b>110</b>	<b>3.1</b>

## SINGLE-GAME HIGHS [all-time ranking]:

Points: 21, vs Ohio State -- 11/25/17

Rebounds: 6, Western Illinois -- 12/18/17

Assists: 3, vs FGCU -- 11/23/18

Steals: 3, Western Illinois -- 12/18/17

Blocks: 1, CSU Bakersfield -- 11/19/17; CSU Bakersfield -- 11/19/17

FG made: 7, vs Ohio State -- 11/25/17

FG attempts: 17, Western Illinois -- 12/18/17

3FG made: 7, vs Ohio State -- 11/25/17

3FG attempts: 15, Western Illinois -- 12/18/17

FT made: 2, 4 times

FT attempts: 3, at Arizona -- 1/1/17

**Official Basketball Box Score -- Game Totals -- Final Statistics**  
**UC Davis vs Stanford**  
**11/7/18 7:00 PM at Stanford, Calif. (Maples Pavilion)**

UC Davis 43 • 0-1

#	Player	Total			Rebounds			PF	TP	A	TO	Blk	Stl	Min	
		FG-FGA	3P-FGA	FT-FTA	Off	Def	Tot								
05	Nina Bessolo	r	3-11	2-8	3-5	0	4	4	2	11	0	2	1	2	19
22	Morgan Bertsch	r	5-15	2-2	4-8	2	3	5	3	16	1	6	2	2	33
32	Jerry Hall	r	1-7	0-4	0-0	3	1	4	1	2	0	2	0	1	27
02	Kourtney Eaton	g	1-9	1-5	0-0	1	0	1	3	2	4	0	1	3	35
03	Karley Eaton	g	0-3	0-2	0-0	0	2	3	0	2	1	0	3	15	
10	Cierra McKeown	g	2-8	2-5	0-0	0	0	0	6	1	0	0	3	19	
11	Sage Stobbart	g	1-5	0-0	0-0	0	3	3	2	2	0	1	0	17	
13	Katie Toole	g	0-2	0-0	0-0	0	0	0	0	0	0	0	0	10	
15	Kaitlyn Hsu	g	0-0	0-0	0-0	0	0	0	0	0	0	1	0	3	
20	Makaila Sanders	g	1-1	1-1	0-0	0	0	0	3	0	0	0	0	3	
21	Sophia Song	g	0-1	0-1	0-0	0	1	1	1	0	1	0	0	9	
23	Kayla Konrad	g	0-0	0-0	0-0	0	4	4	0	0	0	0	1	10	
Team						0	1	1							
Totals			14-62	8-31	7-13	6	19	25	17	43	6	18	3	13	200

Stanford 71 • 1-0

#	Player	Total			Rebounds			PF	TP	A	TO	Blk	Stl	Min	
		FG-FGA	3P-FGA	FT-FTA	Off	Def	Tot								
04	Fingall, Nadia	r	0-1	0-0	2-2	1	3	4	3	2	0	3	0	16	
11	Smith, Alanna	r	4-7	1-2	7-7	1	1	2	4	16	1	4	1	15	
12	Hull, Lexie	r	5-10	1-4	0-0	3	8	11	3	11	0	2	1	27	
21	Carrington, DJonai	g	0-6	0-2	0-0	0	2	2	2	0	1	1	0	13	
23	Williams, Kiana	g	5-8	3-5	1-2	0	1	1	0	14	3	2	0	18	
02	Coffee, Shannon	g	0-1	0-0	0-0	1	0	1	0	1	1	0	0	6	
03	Wilson, Anna	g	0-4	0-4	0-0	0	5	5	1	0	1	0	1	13	
10	Jerome, Alyssa	g	2-5	0-1	2-2	2	6	8	4	0	1	0	0	16	
14	Brewer, Mikaela	g	0-1	0-1	0-0	0	0	0	0	0	0	1	0	2	
15	Dodson, Maya	g	5-8	0-0	2-4	2	6	3	10	1	1	3	2	25	
20	Moschkau, Estella	g	0-0	0-0	0-0	0	0	0	0	0	0	0	0	4	
22	Romano, Alexa	g	2-3	1-2	1-1	0	2	2	0	6	0	1	0	9	
24	Hull, Lacie	g	1-5	0-3	0-0	0	3	3	0	2	0	1	0	17	
54	Brown, Jenna	g	2-2	0-0	0-2	0	3	3	1	4	2	3	0	19	
Team						0	2	2							
Totals			26-61	6-24	13-18	12	38	50	18	71	10	21	6	12	200

Officials: Richard Waters, Teresa Turner, Melissa Barlow  
 Technical fouls: UC Davis-None, Stanford-None.  
 Attendance: 2471

Score by periods	1st	2nd	3rd	4th	Total
UC Davis	14	10	9	4	43
Stanford	17	19	21	14	71

Points In Off 2nd Fast  
 UC Davis 12 9 4 3 11  
 Stanford 18 13 12 11 28

**Official Basketball Box Score -- Game Totals -- Final Statistics**  
**San Francisco vs Stanford**  
**11/15/18 7:00 PM at Stanford, Calif. (Maples Pavilion)**

San Francisco 62 • 1-1

#	Player	Total			Rebounds			PF	TP	A	TO	Blk	Stl	Min	
		FG-FGA	3P-FGA	FT-FTA	Off	Def	Tot								
12	Lundqvist, Moa	r	0-3	0-2	0-0	2	1	3	0	1	1	0	1	16	
24	Kostic, Lucija	r	0-5	0-0	2-2	2	4	4	2	1	2	0	1	23	
13	Alexander, Nia	g	1-6	0-0	0-0	1	1	2	0	2	0	0	0	20	
23	Preciado, Veronica	g	4-7	1-2	2-4	0	3	3	2	11	0	1	0	20	
33	Powell, Shannon	g	4-10	1-4	1-2	2	5	7	1	10	3	3	0	27	
02	Vaalavirta, Kia	g	1-7	0-3	4-6	0	3	3	1	6	3	0	0	28	
03	Galic, Marta	g	2-2	0-0	0-0	0	2	2	1	4	1	2	0	15	
32	Nielacna, Julia	g	5-16	2-4	3-3	2	4	6	2	15	1	3	0	25	
55	Rathbun, Abby	g	3-4	1-1	5-6	2	0	2	4	12	0	0	0	26	
Team						4	5	9							
Totals			20-60	5-16	17-23	13	26	39	18	62	8	14	0	4	200

Stanford 96 • 3-0

#	Player	Total			Rebounds			PF	TP	A	TO	Blk	Stl	Min	
		FG-FGA	3P-FGA	FT-FTA	Off	Def	Tot								
04	Fingall, Nadia	r	3-6	1-3	0-0	2	1	3	3	7	2	1	0	13	
11	Smith, Alanna	r	6-12	5-8	1-2	0	7	7	1	18	3	1	4	26	
12	Hull, Lexie	r	1-5	0-1	2-2	4	1	5	2	4	3	2	0	25	
21	Carrington, DJonai	g	4-7	1-4	0-0	1	4	5	1	9	4	2	0	18	
23	Williams, Kiana	g	8-13	4-6	1-1	0	0	0	1	21	3	2	0	26	
02	Coffee, Shannon	g	0-1	0-1	0-0	0	0	0	0	2	0	1	0	8	
03	Wilson, Anna	g	1-3	0-1	0-0	0	0	0	2	2	0	0	1	13	
10	Jerome, Alyssa	g	3-4	1-2	0-1	0	2	2	2	7	0	0	2	16	
14	Brewer, Mikaela	g	1-1	0-0	2-2	0	1	1	4	0	0	0	0	4	
15	Dodson, Maya	g	4-7	0-0	2-5	0	3	3	2	10	6	0	4	19	
20	Moschkau, Estella	g	2-2	1-1	0-0	1	0	1	0	5	1	1	0	5	
22	Romano, Alexa	g	0-0	0-0	0-0	0	0	0	1	0	0	0	0	5	
24	Hull, Lacie	g	2-5	2-4	0-0	0	1	1	2	6	0	0	0	13	
54	Brown, Jenna	g	1-4	0-1	1-2	0	2	2	1	3	0	0	0	9	
Team						1	3	4							
Totals			36-70	15-32	9-15	9	25	34	19	96	24	9	11	4	200

Officials: Marc Merritt, Alecia Murray, Anita Ortega  
 Technical fouls: San Francisco-None, Stanford-None.  
 Attendance: 2077

Score by periods	1st	2nd	3rd	4th	Total
San Francisco	12	19	15	16	62
Stanford	21	22	23	30	96

Points In Off 2nd Fast  
 San Francisco 30 7 7 19 37  
 Stanford 40 15 12 21 37

Score tied - 0 times.  
 Lead changed - 0 times.

**Official Basketball Box Score -- Game Totals -- Final Statistics**  
**Idaho vs Stanford**  
**11/11/18 2:00 PM at Stanford, Calif. (Maples Pavilion)**

Idaho 71 • 1-1

#	Player	Total			Rebounds			PF	TP	A	TO	Blk	Stl	Min	
		FG-FGA	3P-FGA	FT-FTA	Off	Def	Tot								
42	Klinker, Natalie	r	0-0	0-0	0-2	1	1	2	3	0	0	2	0	13	
14	Pierce, Taylor	g	2-8	1-3	0-0	0	0	0	0	5	1	0	0	26	
20	Kirby, Allison	g	1-3	0-0	0-0	0	1	1	2	2	1	3	0	25	
21	Ferez, Mikayla	g	1-7	1-3	0-0	0	4	4	1	3	4	3	0	16	
23	Marxen, Gina	g	7-11	5-6	3-4	0	3	3	0	22	4	7	0	34	
03	Carlston, Nina	g	1-3	1-1	1-4	0	3	3	4	4	0	1	0	10	
04	Christopher, Hailey	g	3-5	0-0	0-0	0	2	2	3	6	3	0	1	19	
11	Hadden, Isabelle	g	3-7	0-0	2-3	0	0	0	4	8	0	0	1	11	
22	King, Janie	g	6-13	6-10	0-0	1	3	4	3	18	0	0	2	28	
32	Milne, Chayse	g	1-2	1-1	0-0	0	0	0	0	3	1	0	0	8	
Team						0	1	1							
Totals			25-59	15-24	6-13	2	18	20	20	71	14	16	2	4	200

Stanford 115 • 2-0

#	Player	Total			Rebounds			PF	TP	A	TO	Blk	Stl	Min
		FG-FGA	3P-FGA	FT-FTA	Off	Def	Tot							
04	Fingall, Nadia	r	7-9	0-0	2-5	3	5	8	1	16	2	1	2	20
11	Smith, Alanna	r	8-12	2-5	1-1	4	5	9	0	19	4	3	1	24
12	Hull, Lexie	r	6-12	5-10	0-0	2	3	5	3	17	0	0	2	25
21	Carrington, DJonai	g	2-8	1-4	1-2	3	1	4	0	6	1	0	0	11
23	Williams, Kiana	g	7-10	4-7	1-1	0	3	3	1	19	2	0	1	28
02	Coffee, Shannon	g	1-1	0-0	0-0	0	1	1	1	2	0	0	0	6
03	Wilson, Anna	g	3-8	2-6	2-2	1	0	1	2	10	1	0	0	11
10	Jerome, Alyssa	g	1-2	0-1	2-2	0	6	6	4	2	1	0	0	13
14	Brewer, Mikaela	g	1-2	0-1	0-0	0	0	0	0	2	0	1	0	5
15	Dodson, Maya	g	5-8	0-0	0-0	3	2							

**Official Basketball Box Score -- Game Totals -- Final Statistics**  
**American vs Stanford**  
**11/24/18 12:00 PM at Honolulu, O'ahu (Stan Sheriff Center)**

**American 49 • 3-2**

#	Player	Total			3-Ptr			Rebounds			PF	TP	A	TO	Blk	Stl	Min
		FG-FGA	FG-FGA	FT-FTA	FG-FGA	FG-FGA	FT-FTA	Off	Def	Tot							
44	Carl, Cecily	f	3-6	0-0	2-2	0	7	7	5	8	1	2	0	0	23		
03	Lewis, Kaitlyn	g	5-12	1-3	1-1	1	2	3	1	12	3	4	0	0	36		
12	Sanders, Indeya	g	1-4	1-4	0-0	0	2	2	0	3	2	2	0	1	26		
22	Marenyl, Katie	g	3-7	0-1	5-8	1	2	3	2	11	2	1	0	1	32		
23	Koskimies, Elna	g	4-8	1-1	4-4	1	2	3	2	13	1	1	0	0	33		
02	Bartner, Morgan	g	0-3	0-2	0-0	1	0	1	1	0	0	3	0	1	21		
04	Fisher, Emily	g	0-0	0-0	0-0	0	1	1	2	0	0	2	0	0	8		
10	Edwards, Jade	g	0-0	0-0	0-0	0	2	2	4	0	1	1	0	0	8		
11	Cleveland, TaeKenya	g	1-4	0-1	0-0	0	1	1	1	2	0	0	0	0	8		
14	Brown, Taylor	g	0-2	0-0	0-0	0	0	0	1	0	0	0	0	0	3		
21	Doring, Maddie	g	0-0	0-0	0-0	0	0	0	0	0	0	0	0	0	1		
24	Graytok, Laura	g	0-0	0-0	0-0	0	0	0	0	0	0	0	0	0	1		
Team						0	2	2									
Totals			17-46	3-12	12-15	4	21	25	19	49	10	16	1	3	200		

1st FG %:	3-12	25.0%	2nd:	6-14	42.9%	3rd:	5-8	62.5%	4th:	3-12	25.0%	Game:	17-46	37.0%	Deadball	
3FG %:	0-3	0.0%	1-3	33.3%	1-2	50.0%	1-4	25.0%	3-12	25.0%	12-15	80.0%	Rebounds			
FT %:	4-6	66.7%	0-0	0.0%	5-6	83.3%	0-0	0.0%	3-3	100.0%						

**Stanford 71 • 5-0**

#	Player	Total			3-Ptr			Rebounds			PF	TP	A	TO	Blk	Stl	Min
		FG-FGA	FG-FGA	FT-FTA	FG-FGA	FG-FGA	FT-FTA	Off	Def	Tot							
04	Fingall, Nadia	f	3-8	1-4	3-4	4	1	5	3	10	2	1	0	1	24		
11	Smith, Alanna	f	10-18	3-6	2-3	1	7	8	1	25	4	3	1	2	31		
03	Wilson, Anna	g	0-0	0-0	0-0	1	0	1	3	0	2	0	0	0	5		
21	Carrington, Dijonai	g	6-7	0-0	1-1	2	5	7	2	13	1	1	0	2	22		
23	Williams, Kiana	g	3-12	2-6	1-2	0	0	0	2	9	7	3	0	0	33		
02	Coffee, Shannon	g	1-3	1-2	0-0	0	1	1	0	3	0	0	0	0	4		
10	Jerome, Alyssa	g	0-2	0-1	3-4	2	1	3	2	3	2	1	0	0	12		
15	Dodson, Maya	g	2-4	0-0	0-0	1	2	3	1	4	1	1	0	0	18		
20	Moschkau, Estella	g	0-0	0-0	0-0	0	0	0	0	0	0	0	0	0	2		
22	Romano, Alexa	g	0-1	0-1	0-0	0	0	0	1	0	0	0	0	0	4		
24	Hull, Lacie	g	0-3	0-1	0-0	0	3	3	1	0	0	2	0	7	33		
54	Brown, Jenna	g	1-4	0-1	2-3	0	3	3	0	4	1	0	0	0	12		
Team						4	2	6									
Totals			26-62	7-22	12-17	15	25	40	16	71	18	12	2	12	200		

1st FG %:	6-18	33.3%	2nd:	4-13	30.8%	3rd:	7-16	43.8%	4th:	9-15	60.0%	Game:	26-62	41.9%	Deadball	
3FG %:	3-8	37.5%	1-4	25.0%	0-5	0.0%	3-5	60.0%	7-22	31.8%						
FT %:	2-3	66.7%	4-6	66.7%	1-2	50.0%	5-6	83.3%	12-17	70.6%						

Officials: Matt Shute, Sean Martin, Tim Tamashiro  
 Technical fouls: American-None. Stanford-None.  
 Attendance: 1268

Score by periods	1st	2nd	3rd	4th	Total
American	10	13	16	10	49
Stanford	17	13	15	26	71

Last FG - AU 4th-01:17, STAN 4th-00:48.  
 Largest lead - AU None, STAN by 22 4th-02:38.  
 AU led for 00:00. STAN led for 38:13. Game was tied for 01:47.

	In	Off	2nd	Fast	Bench
Points	22	16	0	0	2
STAN	36	17	21	8	14

Score tied - 1 time.  
 Lead changed - 0 times.

**Official Basketball Box Score -- Game Totals -- Final Statistics**  
**Stanford vs Hawaii**  
**11/25/18 2:30 PM at Honolulu, O'ahu (Stan Sheriff Center)**

**Stanford 81 • 6-0**

#	Player	Total			3-Ptr			Rebounds			PF	TP	A	TO	Blk	Stl	Min
		FG-FGA	FG-FGA	FT-FTA	FG-FGA	FG-FGA	FT-FTA	Off	Def	Tot							
04	Fingall, Nadia	f	3-7	1-1	0-0	2	4	6	1	7	1	2	0	1	24		
11	Smith, Alanna	f	12-15	3-6	3-3	2	2	4	2	30	3	3	1	0	25		
03	Wilson, Anna	g	0-2	0-2	2-2	0	4	4	1	2	0	0	0	1	15		
21	Carrington, Dijonai	g	4-6	2-2	2-3	1	3	4	1	12	4	2	0	3	19		
23	Williams, Kiana	g	4-9	0-5	1-2	0	4	4	0	9	3	1	0	2	35		
02	Coffee, Shannon	g	1-2	0-0	0-0	0	1	1	0	2	0	0	0	0	5		
10	Jerome, Alyssa	g	0-3	0-1	4-6	2	0	2	1	4	1	0	0	1	11		
14	Brewer, Mikaela	g	0-0	0-0	0-0	0	0	0	0	0	0	0	0	0	1		
15	Dodson, Maya	g	3-4	0-0	1-1	0	1	1	2	7	0	1	2	0	15		
20	Moschkau, Estella	g	0-0	0-0	0-0	0	0	0	1	0	0	2	0	2	6		
22	Romano, Alexa	g	0-0	0-0	0-0	0	0	0	0	0	0	0	0	0	2		
24	Hull, Lacie	g	3-4	2-3	0-0	0	3	3	0	8	6	2	2	3	28		
54	Brown, Jenna	g	0-1	0-1	0-0	0	0	0	2	0	0	0	0	0	14		
Team						1	2	3									
Totals			30-53	8-21	13-17	8	24	32	11	81	18	13	5	13	200		

1st FG %:	5-14	35.7%	2nd:	11-18	61.1%	3rd:	9-13	69.2%	4th:	5-8	62.5%	Game:	30-53	56.6%	Deadball	
3FG %:	0-7	0.0%	3-6	50.0%	3-5	60.0%	3-6	50.0%	5-6	83.3%	13-17	76.5%	Rebounds			
FT %:	5-5	100.0%	0-0	0.0%	3-6	50.0%	0-0	0.0%								

**Hawaii 59 • 1-7**

#	Player	Total			3-Ptr			Rebounds			PF	TP	A	TO	Blk	Stl	Min
		FG-FGA	FG-FGA	FT-FTA	FG-FGA	FG-FGA	FT-FTA	Off	Def	Tot							
12	Salanoa, Leah	f	2-4	2-3	0-0	1	1	2	2	6	3	2	0	0	23		
35	Woodfolk, Makenna	f	6-9	3-4	1-1	1	4	5	4	16	0	1	0	1	20		
01	Odumu, Rachel	g	1-3	1-1	0-0	0	0	0	1	3	1	2	0	0	14		
02	Middap, Courtney	g	4-7	3-3	0-0	0	2	2	1	11	3	3	1	0	24		
11	Kanoa, Tia	g	1-3	1-2	0-0	0	2	2	0	3	6	4	0	3	33		
00	Tago, Julissa	g	2-10	1-5	0-0	1	0	1	0	5	0	0	0	0	20		
04	Reier, Savannah	g	0-2	0-1	0-0	0	1	1	3	0	2	1	0	1	14		
05	Joseph, Myrrah	g	1-3	0-0	0-0	1	0	1	1	2	0	2	0	0	10		
14	Rewers, Lauren	g	3-5	0-0	0-0	1	1	2	5	6	1	2	0	1	17		
15	Alexander, Jadyynn	g	0-1	0-0	0-0	0	0	0	0	0	0	0	0	0	9		
25	Atweller, Amy	g	2-7	2-3	1-1	0	3	3	2	7	1	2	0	0	16		
Team						1	2	3									
Totals			22-54	13-22	2-2	6	16	22	19	59	17	19	1	6	200		

1st FG %:	3-12	25.0%	2nd:	6-12	50.0%	3rd:	8-13	61.5%	4th:	5-17	29.4%	Game:	22-54	40.7%	Deadball	
3FG %:	2-2	100.0%	2-3	66.7%	7-9	77.8%	2-8	25.0%	13-22	59.1%						
FT %:	0-0	0.0%	0-0	0.0%	1-1	100.0%	1-1	100.0%								

Officials: Lajwan Robinson, Matt Shute, Ethan Kahoano  
 Technical fouls: Stanford-None. Hawaii-None.  
 Attendance: 1383  
 Game called at 00:48.2 due to injury to Stanford player.

Score by periods	1st	2nd	3rd	4th	Total
Stanford	15	25	24	17	81
Hawaii	8	14	24	13	59

Last FG - STAN 4th-04:09, UH 4th-02:25.  
 Largest lead - STAN by 25 4th-02:56, UH by 2 1st-04:44.  
 STAN led for 38:57. UH led for 00:24. Game was tied for 00:24.

	In	Off	2nd	Fast	Bench
Points	44	17	6	2	21
STAN	14	4	4	2	20

Score tied - 1 time.  
 Lead changed - 4 times.

**Official Basketball Box Score -- Game Totals -- Final Statistics**  
**Stanford vs Gonzaga**  
**12/2/18 2:00 PM at Spokane, WA (McCarthy Athletic Center)**

**Stanford 73 • 6-1**

#	Player	Total			3-Ptr			Rebounds			PF	TP	A	TO	Blk	Stl	Min
		FG-FGA	FG-FGA	FT-FTA	FG-FGA</												



**Official Basketball Box Score -- Game Totals -- Final Statistics**  
**Stanford vs Tennessee**  
**12/18/18 6:00 PM at Knoxville, Tenn. (Thompson-Boling Arena)**

**Stanford 95 • 8-1**

#	Player	Total			3-Ptr			Rebounds			PF	TP	A	TO	Blk	Stl	Min
		FG-FGA	FG-FGA	FT-FTA	FG-FGA	FG-FGA	FT-FTA	Off	Def	Tot							
04	Fingall, Nadia	r	1-4	0-0	1-2	2	4	6	0	3	1	2	0	0	0	18	
11	Smith, Alanna	r	5-6	3-4	3-4	1	2	3	5	16	3	2	1	0	21		
24	Hull, Lacie	r	5-8	4-5	0-0	1	2	3	14	1	0	1	0	1	32		
21	Carrington, Dijonai	g	11-15	4-5	7-9	0	13	13	1	33	2	5	0	1	38		
23	Williams, Kiana	g	5-13	3-7	3-4	0	5	5	3	16	7	6	0	2	38		
02	Coffee, Shannon	g	0-2	0-2	0-0	0	2	2	0	0	1	1	0	0	8		
10	Jerome, Alyssa	g	0-1	0-0	0-0	1	1	2	0	0	0	2	0	0	4		
15	Dodson, Maya	g	5-7	0-0	0-0	4	5	9	3	10	2	1	1	0	32		
54	Brown, Jenna	g	1-4	0-1	1-2	0	1	1	0	3	2	0	0	0	9		
Team						0	1	1									
Totals			33-60	14-24	15-21	9	36	45	15	95	19	20	3	3	200		

1st - FG %: 8-16 50.0% 2nd: 9-16 56.3% 3rd: 8-14 57.1% 4th: 8-14 57.1% Game: 33-60 55.0% Deadball Rebounds 5.1  
 3FG %: 4-6 66.7% 5-9 55.6% 2-4 50.0% 3-5 60.0% 14-24 58.3%  
 FT %: 2-2 100.0% 2-3 66.7% 2-4 50.0% 9-12 75.0% 15-21 71.4%

**Tennessee 85 • 8-1**

#	Player	Total			3-Ptr			Rebounds			PF	TP	A	TO	Blk	Stl	Min
		FG-FGA	FG-FGA	FT-FTA	FG-FGA	FG-FGA	FT-FTA	Off	Def	Tot							
00	Davis, Rennia	f	5-15	2-5	2-2	1	9	10	2	14	1	1	0	2	35		
15	Green, Cheridene	f	3-6	0-0	0-0	2	1	3	3	6	0	0	0	0	20		
02	Westbrook, Evina	g	10-21	2-5	7-9	1	3	4	3	29	10	4	0	2	40		
10	Jackson, Meme	g	4-14	3-13	6-10	2	2	4	3	17	1	1	0	1	35		
14	Green, Zaay	g	6-16	2-5	0-0	1	1	2	5	14	1	0	0	1	30		
04	Collins, Mimi	g	2-3	0-0	1-2	2	0	2	4	5	0	0	0	0	15		
05	Harris, Kamera	g	0-0	0-0	0-0	0	1	1	0	0	2	0	0	0	2		
11	Kushkituah, Kasiyahna	g	0-0	0-0	0-0	0	0	0	0	0	0	0	0	0	8		
12	Burrell, Rae	g	0-0	0-0	0-0	0	0	0	0	0	0	0	0	1	3		
13	Massengill, Jazmine	g	0-0	0-0	0-0	3	2	5	0	0	1	0	0	1	12		
Team						0	0	0									
Totals			30-75	9-28	16-23	12	19	31	21	85	14	8	0	8	200		

1st - FG %: 6-18 33.3% 2nd: 7-19 36.8% 3rd: 10-20 50.0% 4th: 7-18 38.9% Game: 30-75 40.0% Deadball Rebounds 3  
 3FG %: 1-4 25.0% 3-8 37.5% 2-5 40.0% 3-11 27.3% 9-28 32.1%  
 FT %: 4-6 66.7% 3-3 100.0% 3-5 60.0% 6-9 66.7% 16-23 69.6%

Officials: Mark Zentz, Felicia Grinter, Cameron Inouye  
 Technical fouls: Stanford-None. Tennessee-None.  
 Attendance: 8051

Score by periods	1st	2nd	3rd	4th	Total
Stanford	22	25	20	28	95
Tennessee	17	20	25	23	85

Last FG - STAN 4th-01:40, UT 4th-01:27.  
 Largest lead - STAN by 15 2nd-01:44, UT by 2 3rd-04:22.  
 STAN led for 37:18. UT led for 00:38. Game was tied for 01:39.

Score tied - 2 times.  
 Lead changed - 2 times.

**Official Basketball Box Score -- Game Totals -- Final Statistics**  
**Stanford vs Buffalo**  
**12/21/18 12:00 PM at Buffalo N.Y. (Alumni Arena)**

**Stanford 62 • 9-1**

#	Player	Total			3-Ptr			Rebounds			PF	TP	A	TO	Blk	Stl	Min
		FG-FGA	FG-FGA	FT-FTA	FG-FGA	FG-FGA	FT-FTA	Off	Def	Tot							
04	Fingall, Nadia	r	5-9	0-0	2-4	3	4	7	1	12	1	1	0	0	29		
11	Smith, Alanna	r	12-22	4-9	2-2	3	10	13	2	30	5	5	3	0	38		
24	Hull, Lacie	r	0-1	0-1	0-0	0	5	5	2	2	0	2	0	0	24		
21	Carrington, Dijonai	g	1-7	0-3	2-2	1	9	10	3	4	0	5	1	2	35		
23	Williams, Kiana	g	2-9	1-6	2-4	0	2	2	3	7	7	1	0	2	40-		
02	Coffee, Shannon	g	0-0	0-0	0-0	0	0	0	0	0	0	0	0	0	0+		
10	Jerome, Alyssa	g	0-1	0-0	0-0	0	0	0	0	2	0	1	0	1	9		
14	Brewer, Mikaela	g	0-0	0-0	0-0	0	0	0	0	1	0	0	0	0	1		
15	Dodson, Maya	g	3-8	0-0	3-3	1	0	1	2	9	1	2	1	0	17		
20	Moschkau, Estella	g	0-0	0-0	0-0	0	0	0	0	0	0	0	0	0	0+		
22	Romano, Alexa	g	0-1	0-1	0-0	0	0	0	0	0	0	0	0	0	1		
54	Brown, Jenna	g	0-1	0-0	0-0	0	1	1	2	0	1	1	0	0	6		
Team						4	2	6									
Totals			23-59	5-20	11-15	12	33	45	18	62	18	19	5	5	200		

1st - FG %: 7-15 46.7% 2nd: 4-16 25.0% 3rd: 4-15 26.7% 4th: 8-13 61.5% Game: 23-59 39.0% Deadball Rebounds 2.1  
 3FG %: 2-6 33.3% 0-8 0.0% 0-2 0.0% 3-7 42.9%  
 FT %: 0-0 0.0% 3-3 100.0% 4-6 66.7% 4-6 66.7%

**Buffalo 55 • 7-3**

#	Player	Total			3-Ptr			Rebounds			PF	TP	A	TO	Blk	Stl	Min
		FG-FGA	FG-FGA	FT-FTA	FG-FGA	FG-FGA	FT-FTA	Off	Def	Tot							
00	HEMPHILL, Summer	r	4-9	0-0	2-4	3	5	8	0	10	2	3	0	5	39		
12	WILKINS, Courtney	r	1-8	1-6	0-0	2	1	3	2	3	0	1	0	0	25		
10	HALL, Hanna	g	3-10	3-8	2-2	2	3	5	2	11	2	1	0	1	34		
11	ONWUKA, Theresa	g	2-9	0-3	1-1	5	8	13	4	5	2	3	0	1	31		
24	DILLARD, Cierra	g	8-25	2-10	3-5	2	2	4	4	21	3	5	0	3	40-		
13	JONES, Autumn	g	0-3	0-2	0-0	0	0	0	0	0	0	0	0	0	6		
22	SODADE, Ayoleka	g	0-1	0-0	1-2	0	1	1	0	1	0	0	0	1	9		
32	MORRISON, Brittany	g	1-4	0-0	2-3	1	3	4	3	4	3	1	0	1	16		
Team						3	3	6									
Totals			19-69	6-29	11-17	18	26	44	15	55	12	14	0	12	200		

1st - FG %: 4-16 25.0% 2nd: 6-21 28.6% 3rd: 2-12 16.7% 4th: 7-20 35.0% Game: 19-69 27.5% Deadball Rebounds 4  
 3FG %: 0-6 0.0% 1-9 11.1% 1-4 25.0% 4-10 40.0%  
 FT %: 1-2 50.0% 0-0 0.0% 6-9 66.7% 4-6 66.7%

Officials: Chris Minor, Robert McDow, Kristyne Esparza  
 Technical fouls: Stanford-None. Buffalo-None.  
 Attendance: 3412

Score by periods	1st	2nd	3rd	4th	Total
Stanford	16	11	12	23	62
Buffalo	9	13	11	22	55

Last FG - STAN 4th-01:42, BUF 4th-00:03.  
 Largest lead - STAN by 12 4th-01:42, BUF None.  
 STAN led for 39:49. BUF led for 00:00. Game was tied for 00:11.

Score tied - 0 times.  
 Lead changed - 0 times.

**Official Basketball Box Score -- Game Totals -- Final Statistics**  
**CSUN vs Stanford**  
**12/29/18 2:00 PM at Stanford, Calif. (Maples Pavilion)**

**CSUN 43 • 6-8**

#	Player	Total			3-Ptr			Rebounds			PF	TP	A	TO	Blk	Stl	Min
		FG-FGA	FG-FGA	FT-FTA	FG-FGA	FG-FGA	FT-FTA	Off	Def	Tot							
11	Juliana Louis	f	2-9	0-2	0-3	5	5	10	2	4	1	3	0	1	27		
52	Eliza Matthews	f	1-3	0-0	1-3	2	1	3	1	3	1	2	0	0	11		
03	Channon Fluker	c	3-13	0-1	0-0	0	2	2	3	6	1	0	3	1	31		
33	Serafina Maulupe	g	1-9	1-7	2-2	1	3	4	1	5	0	1	0	0	23		
02	Meghann Henderson	g	3-8	1-4	0-0	0	3	3	1	7	4	4	1	1	34		
11	Jordyn Jackson	g	1-2	0-0	0-0	0	0	0	2	1	2	0	1	1	16		
02	Destiny Brooks	g	2-3	1-2	0-0	0	0	0	0	5	0	0	0	0	3		
15	Claudia Ramos	g	2-8	2-5	0-0	0	3	3	1	6	1	2	0	1	18		
44	Lauren Shymkewicz	g	1-1	0-0	2-2	0	1	1	0	4	2	0	0	1	22		
55	De'Jonae Calloway	g	0-3	0-0	1-2	0	3	3	0	1	0	1	0	0	15		
Team						4	2	6									
Totals			16-59	5-21	6-12	12	23	35	9	43	11	15	4	6	200		

1st - FG %: 1-12 8.3% 2nd: 3-14 21.4% 3rd: 4-15 26.7% 4th: 8-18 44.4% Game: 16-59 27.1% Deadball Rebounds 3  
 3FG %: 1-5 20.0% 0-4 0.0% 2-7 28.6% 5-21 23.8%  
 FT %: 1-2 50.0% 2-3 66.7% 1-2 50.0% 6-12 50.0%

**Stanford 69 • 10-1**

#	Player	Total			3-Ptr			Rebounds			PF	TP	A	TO	Blk	Stl	Min
		FG-FGA	FG-FGA	FT-FTA	FG-FGA	FG-FGA	FT-FTA	Off	Def	Tot							
04	Fingall, Nadia	r	3-8	0-1	0-0	1	1	2	3	6	0	0	0	0	10		
11	Smith, Alanna	r	6-10	0-2	2-2	1	4	5	3	14	1	0	1	0	17		
24	Hull, Lacie	r	4-7	2-5	0-0	2	2	4	1	10	2	1	0	3	23		
21	Carrington, Dijonai	g	2-6	1-3	0-0	2	10	12	1	5							

**TV/RADIO ROSTER**



**#2**  
**SHANNON COFFEE**  
 C • 6-5 • SR  
 DAYTON, OHIO  
 CENTERVILLE



**#3**  
**ANNA WILSON**  
 G • 5-9 • JR  
 SEATTLE, WASH.  
 BELLEVUE



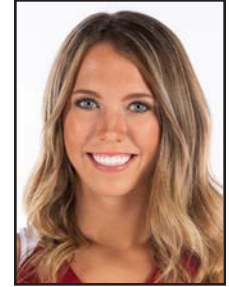
**#4**  
**NADIA FINGALL**  
 F • 6-3 • JR  
 NAVARRE, FLA.  
 CHOCTAWHATCHEE



**#10**  
**ALYSSA JEROME**  
 F • 6-3 • SO  
 TORONTO, CANADA  
 HARBORD COLLEGIATE



**#11**  
**ALANNA SMITH**  
 F • 6-4 • SR  
 MELBOURNE, AUSTRALIA  
 WESLEY COLLEGE



**#12**  
**LEXIE HULL**  
 F • 6-0 • FR  
 SPOKANE, WASH.  
 CENTRAL VALLEY



**#13**  
**MARTA SNIEZEK**  
 G • 5-8 • SR  
 MCLEAN, VA.  
 NATIONAL CATHEDRAL [D.C.]



**#14**  
**MIKAELA BREWER**  
 G • 5-10 • JR  
 BARRIE, ONTARIO, CANADA  
 INNISDALE SECONDARY



**#15**  
**MAYA DODSON**  
 F • 6-3 • SO  
 ALPHARETTA, GA.  
 ST. FRANCIS



**#20**  
**ESTELLA MOSCHKAU**  
 F • 6-1 • SO  
 MADISON, WIS.  
 EDGEWOOD



**#21**  
**DIJONAI CARRINGTON**  
 G • 5-11 • JR  
 SAN DIEGO, CALIF.  
 HORIZON CHRISTIAN



**#22**  
**ALEXA ROMANO**  
 G • 5-10 • SR  
 ALBUQUERQUE, N.M.  
 LA CUEVA



**#23**  
**KIANA WILLIAMS**  
 G • 5-8 • SO  
 SAN ANTONIO, TEXAS  
 KAREN WAGNER



**#24**  
**LACIE HULL**  
 F • 6-1 • FR  
 SPOKANE, WASH.  
 CENTRAL VALLEY



**#54**  
**JENNA BROWN**  
 G • 5-10 • FR  
 ATLANTA, GA.  
 THE LOVETT SCHOOL



**TARA VANDERVEER**  
 HEAD COACH  
 33RD YEAR



**KATE PAYE**  
 ASSOCIATE HEAD COACH  
 12TH YEAR



**TEMPIE BROWN**  
 ASSISTANT COACH  
 SIXTH YEAR



**LINDY LA ROCQUE**  
 ASSISTANT COACH  
 SECOND YEAR