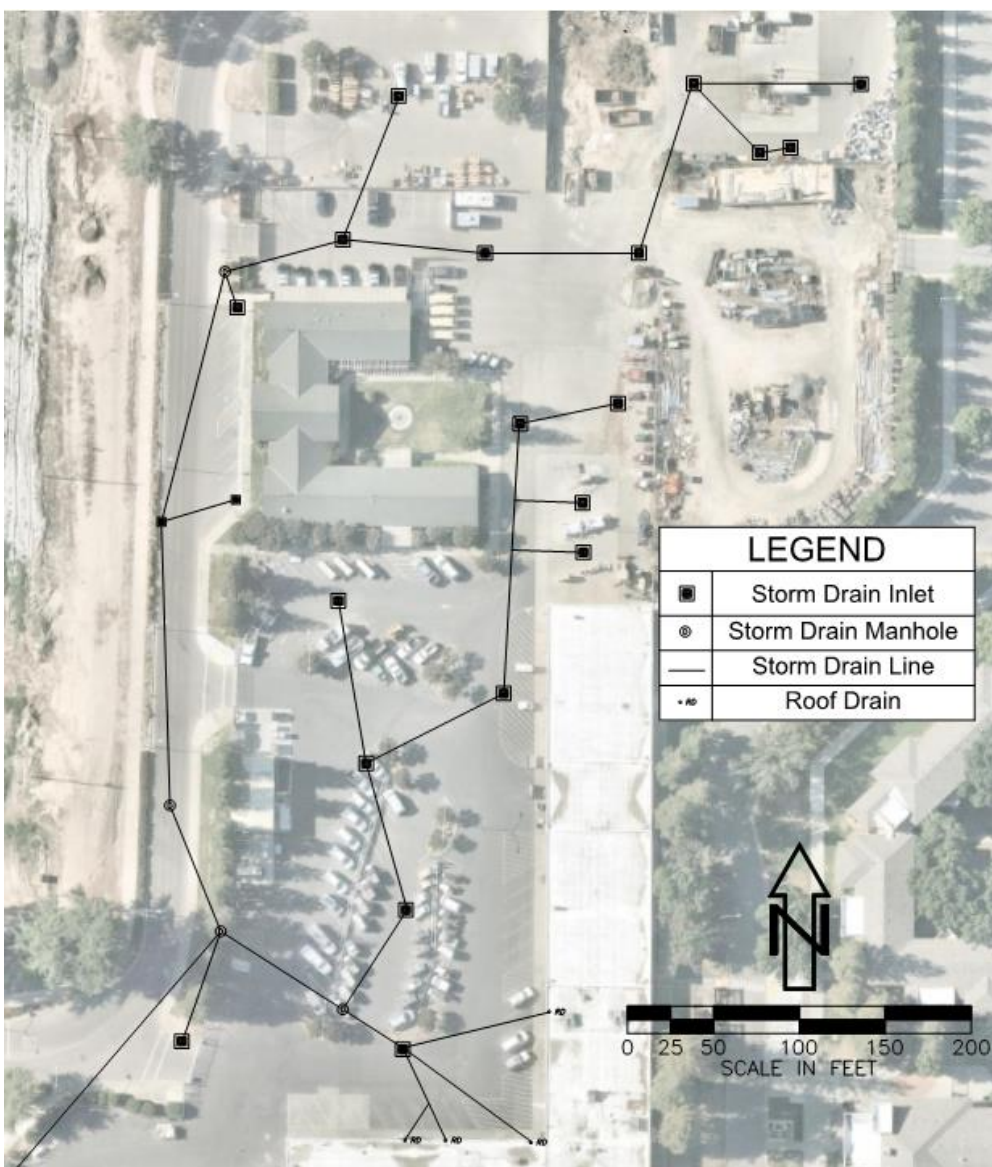


PREVENTING STORM WATER POLLUTION

This Storm Water Pollution Prevention Plan provides implementation measures to be implemented within the Corporation Yard facility to decrease the potential for and actual occurrence of pollutants contaminating storm water. A list of Best Management Practices is provided for implementation at this location. The following high priority BMPs are examples of critical implementation to protect storm water quality.

1. **ONLY RAIN IN THE DRAIN** – No materials other than clean storm water should be allowed to enter storm drains
2. **POLLUTION PREVENTION AND GOOD HOUSEKEEPING** – All measures of the Staff Pollution Prevention and Good Housekeeping section of the Storm Water Management Program shall be followed.
3. **WASH AREAS** – Only use designated wash areas for vehicles, or use a certified off-site wash facility
4. **SPILL PREVENTION, CONTROL, AND CLEAN-UP** – Proper spill prevention measures shall be followed for all activities at this location. Spills should be addressed immediately and in accordance with protocols
5. **MATERIAL STORAGE** – All materials at this site shall be stored so that they are prevented from contact with storm water
6. **SECONDARY CONTAINMENT** – All liquid materials shall be stored using secondary containment to reduce the likelihood of spills or leaks contaminating storm water
7. **ILLICIT DISCHARGE DETECTION AND ELIMINATION** – If any non-storm water materials are seen entering the storm drains, proper protocol shall be followed in accordance with the Illicit Discharge Detection and Elimination Program.
8. **QUARTERLY INSPECTION** – As is required by the Phase II Non-Traditional MS4 Permit, all hot spot locations shall be inspected on a quarterly basis.

SITE MAP



SOURCES CONSULTED

CASQA Municipal BMP Handbook

CSU Stanislaus Hazardous Materials Management Program

SITE CONTACTS

Eddie Magana: Chief Engineer
(209) 667-3218
Emagana14@csustan.edu

Tim Overgaauw: Sr. Director | Facilities
Operation and Construction
(209) 664-6626
TOvergaauw@csustan.edu

POTENTIAL POLLUTANTS

- Sediment
- Oils & Grease
- Petroleum Hydrocarbons
- Metals
- Hazardous Materials
- Cement/Concrete
- Trash
- Nitrogen & Phosphorous

BEST MANAGEMENT PRACTICES (BMPs)

FM-01 – Building Maintenance

FM-06 – Parking and Storage Area Maintenance

MW-01 – Outdoor Container Storage

MW-02 – Outdoor Loading and Unloading

MW-03 – Waste Handling and Disposal

VE-01 – Outdoor Equipment Maintenance

VE-02 – Vehicle and Equipment Cleaning

VE-03 – Vehicle and Equipment Fueling

VE-04 – Vehicle Maintenance

POLLUTANT SOURCES

The Corporation Yard is the main area for material storage, fleet vehicle storage and maintenance, and the loading and unloading of all materials required for the maintenance of the campus facilities. This area is most analogous with an industrial land use and serves similar functions for the campus. Potential pollutants in this area are primarily resultant of activities performed by the Capital Planning and Facilities Management department at CSU Stanislaus. Materials that are stored or utilized in this area that may come in contact with storm water are as follows:

- Oils and grease
- Trash
- Gasoline
- Detergents and soaps
- Nutrients (Fertilizers)
- Metals

To ensure that pollutants are not reaching storm water, all materials will be stored in water-tight containers, in secondary containment, and primarily in-doors or beneath shelter. Trash receptacles and large waste areas will be maintained to prevent the potential for exposure to storm water.

SPILL PREVENTION AND RESPONSE

1. Notify other persons in area
2. Isolate spill area and keep people away
3. Check SDS sheets for recommendations for clean-up
4. Wear appropriate PPE
5. Contain spilled material(s) using absorbent pads or socks
6. Neutralize spilled material(s) using appropriate neutralizing agent
7. Clean up neutralized material using a dustpan and/or plastic scoop
8. Place neutralized material in hazardous waste container. Dispose of hazardous wastes properly
9. Wash area where spill occurred to ensure no residue is left (do not wash into storm drain)
10. Notify the Department Safety Coordinator and S&RM