

# *SALVE REGINA UNIVERSITY*

2021-2022

# ANNUAL SERVICE REPORT



**CENTER FOR  
COMMUNITY  
ENGAGEMENT AND  
SERVICE**

**25 YEARS OF  
FEINSTEIN**

**“VOLUNTEER TO WORK  
FOR A WORLD THAT IS  
HARMONIOUS, JUST AND  
MERCIFUL”**

**FEINSTEIN ENRICHING AMERICA PROGRAM**

## 25 Years of Feinstein

Salve Regina University sees participation in service as essential to living their mission statement. In 1996, the University strengthened its longstanding commitment to community service by forming an alliance with The Feinstein Foundation. Empowered by a generous million-dollar grant, the university established the Feinstein Enriching America Program. As a condition of the grant, students are required to serve a minimum of ten hours of community service in Rhode Island prior to graduation.

### Our Mission

The Center for Community Engagement and Service is dedicated to empowering students to grow as inspired leaders and engaged citizens seeking to build a more harmonious, just, and merciful world. Through mutually-beneficial partnerships that contribute to the educational formation of students and address the expressed needs of our local and global community, the Center for Community Engagement and Service serves as a catalyst in advancing the Critical Concerns of the Sisters of Mercy, service leadership, and the common good.

### Our Vision

The Center for Community Engagement and Service, and the Feinstein Enriching America Program envision an educational system that successfully combines community service with academic learning to create an environment which challenges and prepares students to be leaders, critical thinkers, reflective learners, and active members of just communities, near and far.

# Signature Programs



**Service  
Advocate  
Program**

**Thompson  
After-school  
Program**

# Service Advocates

Service Advocates are given the opportunity to participate in a yearlong civic engagement and service program, providing them with the knowledge, skills, and experiences necessary to become active leaders. The students participate in regular training, direct service, and reflection activities. Service Advocates perform at least 100 hours of service at their primary site, which can be Child & Family Services, Potter League, Salvation Army, Donovan Manor, Newport Hospital, Edward King House, Learning Unlimited, God's Community Garden, YMCA, Newport Partnerships for Families, Newport Community School, Thompson Program, MLK Center, and International Tennis Hall of Fame.

Throughout our members' time at Salve, **6625+ hours** of service have been contributed by our current Service Advocates.

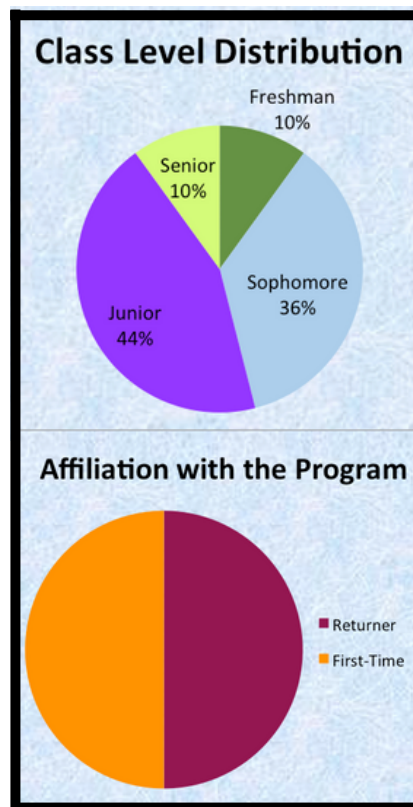
**26**  
Service Advocates

**3**  
Senior Service Advocates

**13**  
Community Partner sites

**37**  
club affiliations on campus

**18**  
different majors



*"I have learned so much about my community outside of the gates of Salve. I feel that before becoming a service advocate, I was not as aware of the community around me. Now, I can see how many people are in our community who have so much to teach and we can learn so much from."*

-Katie Mountcastle '23

*"This experience has truly developed my personality and my understanding of responsibility. These experiences are one of a kind and it has been so exciting to work with these kids every week. They are so full of life and they inspire me to be the best that I can and to give them my all!"*

-Brianna Getzoff '25

## Advocate Testimonials

# Thompson After-School

The Center for Community Engagement and Service organizes an after-school program on campus for fifth and sixth-graders from Thompson Middle School in Newport. Salve students help Thompson participants become community leaders, dynamic team members, and positive role models. These volunteers seek new opportunities to work with student-led clubs on campus to organize engagement activities that foster creativity and enhance personal growth.

In September of 2021, the Center for Community Engagement and Service reestablished its ongoing collaboration with the Thompson Middle School in Newport, RI by bringing back an after school program for middle school students, held on Salve's campus every Monday and Wednesday evening.

The program ran four sessions throughout the academic year. Session 1 focused on Health, Wellness, and the importance of Nutrition. The second session focused on cultivating STEM activities and teaching about the significance of giving back. Session 3 predominantly was structured around instructing, improving, and guiding the students on why writing is important beyond an assigned school composition. The emphasis on how exemplifying proper grammar and establishing context within one's own writing will be beneficial when students seek out their career passions in the future. The final session allowed students to take skills that they had learned and apply them to an overarching project through a multicultural project. The final project granted students the opportunity to select a country, conduct research, create a poster of their findings, and present it at an exhibition showcase held in April of 2022.

## Fast Facts:

- 3 AmeriCorps Vista Members
- 35 Salve Student Volunteers
- 32 Thompson Middle School Student Participants
- 2 Salve Faculty Class collaborations
- 3 Salve Sports/Club collaborations



I loved doing activities that I've never done in my life.

"It is amazing that you care. Your Salve after-school program always excites me and brings a smile to my face. Thanks again"  
-Austen, 5th grader

"Volunteering with Thompson After-school program has given me the opportunity to connect with the students in a way that showed me the true meaning of why this program began in the first place, and how significant it is to learn and know about others."

-Alexandra Neeve-Newsome '25

## Testimonials

# Service Leadership



**AmeriCorps  
Vista  
Program**

**Newman  
Civic  
Fellowship**

**Vision of  
Mercy  
Fellowship**

# AmeriCorps Vista Program

Through a Campus Compact grant the Center hosted 3 part time AmeriCorps members for the 2021-2022 academic year as a part of the K2H Civic Futures AmeriCorps Program. The three AmeriCorps rigorously planned educational activities, STEM Projects, as well as various team building tasks for the students to help promote awareness of the importance of seeking higher education. This was an opportunity to provide a foundation for the students abided by the standards highlighted in the AmeriCorps Project Citizen model.

## Salve's 2021-22 Vista Members

### Emily

**Major:** Elementary and Special Education

"I helped lead the Thompson Program to inspire students to enjoy learning and to help foster deep friendships between the students in the program."

### Eric

**Major:** ADJ, Philosophy, & 5 year MBA grad student in Homeland Security

"The Thompson Program was of significant importance to me in that it facilitates fun into the lives of local youth."

### Kaitlyn

**Major:** 5 year MBA grad student in Business Administration with a Cybersecurity Issues & Intelligence concentration and certification

"This program allowed me to help encourage students to explore and take advantage of a plethora of opportunities available to seek personal growth and academic enjoyment."



# 2022 Newman Civic Fellow

## Congratulations to Lindsay Smith



It is with great honor that Salve Regina is announcing Lindsey S. Smith '24 as the 2022-23 College Compact Newman Civic Fellow. Chosen out of a group of 173 students from 38 states and Mexico, Smith will be given the opportunity to build upon her leadership skills and develop more ways to help the community at large. The College Compact Newman Civic Fellowship recognizes and supports students who are committed to their community and who strive towards change and problem-solving at Campus Compact institutions.

As a sophomore at Salve Regina in the Pell Honors Program, Smith is working towards a double major in social work and Spanish. Dedicated to helping the community around her, Smith has been a service advocate at the Newport String Project, as well as the Martin Luther King Jr. Community Center.

"[At the Newport String Project], I dedicated 100 hours of service work before I left in January," explained Smith. "I was able to teach students how to play instruments and assist the teachers there with anything they needed." But Smith's acts of service truly started her freshman year amidst the COVID-19 pandemic. As a freshman, Smith worked with Learning Unlimited, an organization set to create educational opportunities for students. Through Zoom, she was able to connect with individuals in the Newport community with learning disabilities.

"Although we were not allowed to meet in person, this organization worked hard to make the experience as close to in-person as possible through different games and activities each week," Smith explained. "I formed a wonderful bond with my partner and looked forward to talking with her each week."

Starting next semester, Smith will begin her junior placement for social work, giving her the chance to further explore and develop her work with the community and those in need.



Smith thanks Kelly Powers, director of the Center for Community Engagement and Service; Dr. Heather Pizzanello, assistant professor in the Department of Social Work and McAuley Scholar; and Dr. Mary Montminy-Danna, professor in the Department of Social Work. She is grateful for their support and guidance in teaching her how to make an impact on the community. She is also grateful to for Dr. Kelli J. Armstrong, president of Salve Regina, for electing her to this position.

"I am honored to be selected for this enriching experience and to have the ability to eventually meet and work with others who have been selected by their universities," she said.

**Article written by student writer Taylor Majkowicz '22**



# 2022 Vision of Mercy Fellowship

The Vision of Mercy Fellowship offers undergraduate students a high-impact community-based experience rooted in the Mercy mission of Salve Regina University, working to build a more harmonious, just, and merciful world. Selected Fellows work with local, domestic, or international organizations committed to the materially poor, to peace and justice, and to advocacy and action related to the Critical Concerns of the Sisters of Mercy: Immigration, Earth, Racism, Non-Violence, and Women. Fellows deepen their understanding of solidarity and service through pre-and post-experience gatherings that engage students in reflective practices informed by the Mercy tradition.

---

## Congratulations to the 2022 Vision of Mercy Fellows

### Elizabeth Baza, Newport Community School.

Growing up in a diverse community Salve's mercy mission has always stood out to Elizabeth Baza. With a focus on women, antiracism, earth, immigration, and non-violence, she has always felt that her own morals have aligned with what Salve seeks to put into the world. In the community, she was raised in there was no shortage of diversity and more commonly than not this diversity was both in homelands and in finances. Her community housed peoples from all over the world- those that were born here and those that were not, her own family being included in this, some having no money and others having more than many. Baza, who grew up with a dad who was, born and raised in Damascus, Syria, with a family focused on faith, togetherness, and community, even during the ongoing war. Her father's continuous perseverance to promote strength, community, and hope into the world, even outside of Syria, was a large part of her upbringing and has always left her seeking to do more and to be more in the communities that I live in. Mercy and justice were just two of the core values at the heart of my upbringing and made this a part of childhood at home. The togetherness of Milford and the diverse backgrounds and experiences that everyone brought to it were evident to me in each opportunity I found myself serving in. Coming to Salve, Elizabeth knew she wanted to continue to better her community and to help those that needed it- and that is what she has continued to do. From being involved in various events and programs during first

year at Salve to leading the Spring Break Service Immersion, and putting together an RA community service program, she has found wanting to do more and to put more kindness into the world.

During Baza's fellowship, she will be working with the Newport Community School at Thompson to establish their hall monitor program. Within this project, she will create a training plan, instructions for prospective volunteers to become eligible to be a hall monitor, an incentive system for the students at Thompson that exemplify Salve's critical concern of nonviolence, and she will work on creating presentations for varying academic departments at Salve explaining why this program is important, how it applies to their area of study, and how Salve's critical concern of nonviolence applies to the program at Thompson. In addition, this process will be followed along via social media so that the public is able to learn more about the program and how it will impact the Newport/Middletown communities.

### **Wendy Gomez, Generation Teach**

Change occurs when there is an active awareness of undeniable issues voiced within the community. From Gomez's perspective, being merciful stems from the kindness one has to share with others. No one should categorize themselves as higher or lesser than a person based on gender or race. Such mercy and justice can reach their fullest potential when consistent advocacy is ongoing. It can all start within one's school, neighborhood, or local organization. Since there are so many areas in which advocacy is yet to happen, everyone's input matters. In her current stance, Gomez is a current first-generation elementary education major with a minor in special education interested in educational equity. Coming from a Latina background, she has been gifted with opportunities her parents did not get. The realization of how much there is to do started back beginning the first year in high school. Her involvement with community service has introduced and educated her on job opportunities, social awareness, and a chance to help out those in need. When Wendy Gomez discovered Generation Teach, what piqued her interest was the vision statement; "The vision of Generation Teach is to end racial injustice and inequity in education." As an education major, diversity in the classroom is fundamental. Diversity must be embraced and appreciated, what society has come to figure out. Not to mention, Generation Teach also strives to provide professional opportunities to those of color. She found GT's core values aligned with one of Salve's critical concerns, racism and wants to help others feel a sense of belonging.

## **Lia-Sophie Keller, Conexion Latina Newport.**

Lia-Sophie Keller's, vision of mercy and justice in the world is that everyone deserves to feel safe, supported, have affordable educational opportunities and for all to have the resources to live a healthy and happy life. This understanding of vision of mercy leads her major in Administration of Justice with a minor in Psychology. With this future career she wants to keep community safe, build a trusting relationship between federal law enforcement and the community, help build resources for at-risk youth and help to end the cycle of abuse. In addition, she is also interning at Homeland Security Investigations in Providence, which focuses on child exploitation, human trafficking and more.

During Keller's summer fellowship, she will be working with Conexion Latina Newport to assist with researching resources for the community, learning salesforce databases, and anything else the organization may need help with. Within this project, Keller will help Spanish speaking individuals in the Newport community to have access to opportunities and resources. With the database, she will help the employees at Conexion Latina to stay organized. Keller will also be working on various social media projects depending on whether or not a Spanish speaking fellow will be hired for the summer. In addition, Lia-Sophie Keller plans to help create awareness at Salve Regina University for the daily struggles of someone living in the US with English as a second language.

## **Katarzyna Osiecka Kaszuba, Bike Newport**

Kaszuba believes a merciful and just community is one that strives to help itself and those in the community. A community who focuses on their entire community and how to help those in need rather than helping themselves and only focusing on material gain. She believes a great example of this is non-profits that focus on the communities they are in. Those whose mission is to help the community, even in the smallest ways. Kaszuba believes those types of communities are the ones that make big impacts in people's lives that people carry their entire lives and pass on to others. If we have enough merciful and just communities, we will be able to slowly achieve a merciful and just world, where people don't struggle to survive. But rather a world where everyone can thrive and not worry about when their next meal will be or if they will be a victim of a hate-crime or if they will be discriminated by things they cannot change.

Within Kaszuba fellowship at Bike Newport, she plans to help the organization accomplish their events that revolve around the earth, such as their Full Moon ride. In addition, she will be helping with the Bike Camps which helps kids learn how to ride a bike, take care of them, how to stay safe while riding, and encouraging to continue to ride. Along with children, Kaszuba, hopes that her fellowship will allow her to work in collaboration with the Newport Festivals, encouraging people of all ages to bike instead of driving to the festivals. At Bike Newport, Kaszuba will continue acting on and expanding their mission as a bike advocacy organization..



# Seahawks in the Community



**Day of  
Service**

**Work  
Study**

**Spring  
Break**

**Service  
Plunge/2.0**

**Donation  
Drives**

**MLK Day of  
Service**

# Service Immersion Learning

Service immersions offer a unique opportunity for students to volunteer, experience a new culture, build community, and reflect on their service experiences. These immersions offer students an opportunity to live the mission of Salve Regina through these experiences. The Center's current immersions are: Jamaica Service Trip, Alternative Spring Break, Service Plunge 2.0, Florida Service Trip, and the South Dakota Service Trip. However due to Covid-19 many of the service immersions were put on hold until 2022.

## Service Plunge-Fall 2021

The Service Plunge provides new students with a challenging and fun opportunity to lead and learn through active experiences. Through direct and indirect service, "plungees" learn the importance of service, social justice, and civic engagement. They also meet community needs, identify and build upon community assets, and share their experiences with the campus community, all while making lifelong friends.

In September of 2021, **30** incoming freshmen took the plunge. Each student completed over **10 hours** of community service at **four different sites**, including Norman Bird Sanctuary, Donovan Manor, Gifts to Give, God's Community Garden, Child and Family and Miantonomi Park. These students were able to give back to the community while completing their service requirements before their first year at Salve officially began!



# Service Plunge Impact-Fall 2021



## GIFTS TO GIVE

---

Our work helped to create more than **80** gift packages for local children in need.



## CHILD AND FAMILY

---

Collected  
**76**

paper leaf bags full of trimmings and weeds.



## GOD'S COMMUNITY GARDEN

---

Collected and packaged...

**12.2 lbs** of carrots

**3.5 lbs** of radishes

**26 bags** of spinach

**44 bags** of lettuce

**13 bags** of beet greens

**8 bags** of kale

**9 trays** of tomatoes

**40 servings** of squash

and some peppers, cucumbers, and additional greens.

## DONOVAN MANOR

---

**5**

hours spent weeding the side garden, trimming rose bushes and hedges, and cleaning signage areas.



## NORMAN BIRD SANCTUARY

---

Took down and put away around  
**100**

bird houses across a large field



## Testimonial

*"The Service Plunge is all about building a community while serving the community."*

*-Plungee: Rosie Lacy '25*

# Service Plunge 2.0-Spring 2022

The Center for Community Engagement and Service held its annual Service Plunge 2.0 in March. The service immersion was led by **four student facilitators**, Emily Gibson, Miranda Gallagher, Michael Sateriale, and Dan McCarthy. These students led **10 other Salve students** in service around Aquidneck and Block Island.

The **14 students** started off the plunge by putting up a field and a half of bird boxes at Norman Bird Sanctuary, a nonprofit bird sanctuary in Middletown, RI that aims to protect birds and the environment. The team did a great job working together and were able to put back up **over 100 bird houses**. The following day, the Service Plunge 2.0 team volunteered on Block Island to help The Nature Conservancy and Ocean View Foundation. The participants and facilitators planted beach grass to help maintain and protect the new sand dunes that were built to restore previous dunes that were destroyed in recent storms. The beach grass covered dunes will help to protect the coast for years to come.



For our Service Plunge program, volunteers served at **4** community partner sites on Aquidneck Island.

The volunteers were able to log a total of: **380 hours!**



# First Year's Exploratory Day of Service 2021

## THE CLASS OF 2025 RECOGNIZES THE NEED FOR COMMUNITY DURING DAY OF SERVICE

The entire Class of 2025 spent a day volunteering at various community partner sites alongside their Orientation Leaders on Tuesday, September 7th. This year's Day of Service was lead by Rose Bottari, Sophia Doukakis, Kaelie Piscitello, and Colin Cannon who spent time contacting organizations and preparing materials for students to volunteer at all 21 Community Partner Sites across Aquidneck Island.

Day of Service helped out Clean Ocean Access, Child and Family, the International Tennis Hall of FAME, the Potter League for Animals, Newport County YMCA, James L. Maher Center, Trinity Church, the MLK Center, Middletown Senior Center, Town of Middletown, Donovan Manor, Sail Newport, Evangelical Friends Church Newport (EFC), Conexión Latina Newport, God's Community Gardens, Miantonomi Memorial Park, the Norman Bird Sanctuary, Bike Newport,

Fab Newport/Looking Upwards, the Fort Adams Trust, and the Christian Action Center. Projects ranged from gardening to landscaping, meal making, event set up, and preparations for all these partners.

On Tuesday, September 7th over **645** first-year students volunteered at **21** different community partners to total over:

**2,013 hours!**

Clean Ocean Access



God's Community Gardens



Middletown Senior Center



# Donation Drives

## Trick or Teeth

Over **500** toothbrushes and tubes of toothpaste were donated to the local schools to promote healthy oral hygiene ahead of Halloween 2021.



## Thanksgiving Food Drive

Held in November, the Thanksgiving food drive collects nonperishable donations for Child & Family, the Dr. Martin Luther King Jr. Community Center, Newport Housing Hotline, Conexion Latina Newport and the Salvation Army.

This year over **2587** non-perishable items and **\$690** in monetary donations were donated throughout Aquidneck Island.

## Angel Tree

Held during the holiday season, the Angel Tree drive benefits individuals in the community, shelter animals and after-school programs. Donors choose a tag from the trees located throughout campus and purchase holiday gifts from the wish list on the tag. Members of the University community may also make monetary donations for elves to do the shopping. The program supports local organizations such as Child & Family, Dr. Martin Luther King Jr. Community Center, Newport County YMCA, Newport Public Schools, Potter League for Animals, Salvation Army and Tashirat Orphanage in Mexico.

In 2021, as campus wide, we donated over **2,691** holiday items and **\$1305** in monetary donations to those in need.



## Sodexo Gleaning

Over the past academic year, Sodexo Food Services has donated over **485** un-used sandwiches, wraps, salads and soups to various community partners on the island.



## Better World Books

This past year **19** boxes of textbooks and books were donated to Better World Books.

## End of Year Donation Drive

This year we collected **3030** items and donated them to Housing Hotline and Rogers Closet.

# Work Study

**5**

WORK STUDY

**10**

HOURS  
PER WEEK

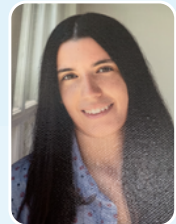
**2**

GREEN TEAM  
MEMBERS



"Being a work study has improved my life a lot. Not only has it taught me how to be more reliable and independent, but it also brought me some good friends."

- Chiarina Stead '25



"Working in this office has had an incredible impact on me and allowed me to grow as an individual. I learned so much being able to work with people who have the same motivations and values as me. This work study position has helped me in my college experience."

- Shelby Hibbert '24



"Being a work study taught me that you can give and embrace mercy through small acts. Being able to help with service and create impactful newsletters that inspired others to give back to the community around them was really special for me. Every effort matters and through being a work study, I have learned how much goes into each act of service. It taught me that mercy is an expression of gratitude for the community around yourself."

- Camilla Watts '25

# MLK Day of Service

Over, 11 service projects took place on Friday, January 21st in honor of Martin Luther King Jr., with the help of 52 student volunteers. Student volunteers assisted with passing out hot chocolate & cookies at MLK Center and Salvation Army. More volunteers helped with MLK Trivia to youth at Thompson Middle School and a few helped with packaging products at Edesia's Peanut Factory!



# Spring Break



Volunteers helped Gifts to Give sort and organize over **5lbs** of collected clothing for families in need. After items are sorted, they are distributed to those in need.

Salve volunteers worked along side URI volunteers during spring break to help clean the shores of debris at Rose Island. Each volunteer had a significant impact on the remote island and helped prepare it for the busy summer months.

Volunteers helped prepare and distribute 40 meals at St. Paul's Church for those community members in need. For those receiving the meals, all are welcome to pick up.

# Highlights



**Service  
Leader  
Retreat**

**Community  
Meal Prep/  
Distribution**

**New  
Partnerships**

# Service Leader Retreat

April 1st 2022 marked our first annual Service Leader Retreat. After a year of social distancing and few in person events we were able to gather together and reflect upon the past year of service. Alumni Joe Goff led us through a motivational speech and meditation, where he encouraged our leaders to make space to really reflect deeply on their personal journey of service and the importance of leading with Mercy. We seek to continue this tradition next year!

Thank you to Salve alum, Joe Goff for coming back to Salve to be our guest speaker!

---

*" To me, service is a very important part of the human experience. The people who think about others before themselves are that important part. It is a very nice feeling, knowing that someone somewhere, who does not have much, is now at least happier because of what you have done - even if they do not know who you are or where you come from. Every little bit counts."*

*- Salve 2022 Service Leader*



# Community Meal Prep/Distribution

The local churches closed down during the pandemic and many families and some homeless community members suffered from food insecurity. Our center's impact and response plan was to take over the kitchen at St. Paul's Church for parishioners who could not respond to the local community need.

This academic year our center had Club Members, RA's, Athletes, Rogers Key Club, Kiwanis Club of Newport, and local Organizations help make meals for St. Paul's Community Action Handout.

Within the Fall 2021 and Spring 2022 semesters, we have been able to provide 360 hot and cold meals made for community members in need in addition to prepared snack bags to accompany the evening meals.



## New Partnerships

### Edesia

In 2021 the center entered into a new collaboration with Edesia, a local non-profit which provides ready-to-use foods to help the fight for hunger in 60 countries and nations worldwide through partnerships with UNICEF, the World Food Program, USAID/USDA and many others.



# Revive the Roots



Revive the Roots is a non-profit organization in Smithfield, Rhode Island. Spring Break volunteers had the chance to help this organization for the first time, by clearing the greenhouses, working in the plant boxes and prepping for warmer months. Revive the

Roots' mission is to create ecologically regenerative and dynamic social spaces through the education and practice of permaculture. By working with students and faculty at local schools, Revive the Roots has had planted edible forest gardens and annual vegetable gardens throughout northern Rhode Island. At the public grounds, Mowry Commons, they provide space for people to grow their own food, explore trails along the Woonasquatucket River, and connect with their family and friends. Revive the Roots also hosts a series of events and workshops to bring together and educate the public about permaculture and sustainable practices.

Overall, Revive the Roots is meant to serve as an educational and recreational hub in Smithfield, and also as an example for the rest of Rhode Island to nurture both community and local ecology.

# Bunny Playgroup & Crochet for Kids

In 2021 the center offered two Semester in Service Opportunities for students, both hosted by Service Advocate, Liv McGowan '23 . One was weekly visits to the Potter League for Animals to provide emotional support to the bunnies and also help students practice some self care through service. The other opportunity engaged students in crochet to create an array of projects from blankets, to stuffed animals, scarves, and hats for local children.





# A Special Thanks to...

**Dr. Michele Giuffre Shore**

&

Elmwood Park Cosmetic Dentistry  
248 Palsa Avenue  
Elmwood Park, New Jersey 07407



... for donating over 100 toothbrushes and toothpaste tubes for our first Trick or Teeth Donation Drive.



**Ruth Thumbtzen**

... for contributing a generous monetary donation in support of our Thompson After-School Program hosted at Salve Regina University.

**Kiwanis Club of Newport**

... for contributing a generous monetary donation in support of our "March into Reading" bookshelf project.



**Kiwanis**  
CLUB OF NEWPORT

## Our Community Partners:



DR. MARTIN LUTHER KING JR.  
COMMUNITY CENTER



**EDWARD KING**  
HOUSE



**Child & Family**

Caring for our Rhode Island Community since 1866



**Potter League**  
Enriching Lives



Lucy's Hearth



"Service is the rent we pay for the privilege of living on this earth."

-Nathan Eldon Tanner

---

As we look back at our 2021-2022 year of service, the Center for Community Engagement and Service provided Salve students with over

**100**

service opportunities.

The Center is proud to announce a grand total of

**8,005 hours**

completed by

**818**

undergraduate Salve students at

**115**

agencies and community partner sites.



**Salve  
Serves**  


**GERETY HALL**

**401-341-2440**

**COMMUNITY.SERVICES@SALVE.EDU**

**SALVE.EDU/OFFICE-SERVICE/CENTER-COMMUNITY-ENGAGEMENT-AND-SERVICE**

**FACEBOOK.COM/SALVECOMMUNITYSERVICE**

**INSTAGRAM @SALVESERVICE**

**FEINSTEIN ENRICHING AMERICA PROGRAM**