



Like 13K Share

National Listing of LGBTQ-Friendly Colleges & Universities

Login

Register

Quick Links

My Bookbag 0

- Campus Search
- College Prep Resources
- FAQs
- College Fairs
- About Us
- Partners
- Contact Us



Tweet

WEST VIRGINIA UNIVERSITY

I'm Interested!
Add this campus to My Bookbag

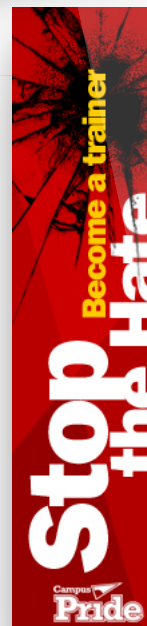


The Campus Pride Index is an overall indicator of institutional commitment to LGBTQ-inclusive policy, program and practice. [How is this calculated?](#)

CAMPUS FACTS & FIGURES

- Region:** South
- City/State:** Morgantown, WV
- Locale:** Small City (25,000 to 100,000)
- Student Population (FTE):** 34,000
- In-State Tuition:** \$6,600.00
- Out-of-State Tuition:** \$20,000.00
- Institution Website:** <http://lgbtq.wvu.edu/>

- Institution Type:**
 - Doctoral/Research University
 - Master's College/University
 - Baccalaureate College/University
 - Public/State University
 - Residential Campus



LGBTQ STUDENT OPPORTUNITIES



Colleges and universities want LGBTQ students, faculty and staff to be out and proud as part of the diversity of the campus community. The Campus Pride Index provides campuses the opportunity to come out as LGBTQ-friendly and take responsibility for continually improving their LGBTQ campus climate.

The Campus Pride Index features LGBTQ student opportunities by highlighting the positive work within higher education across the country. Prospective students and families may choose the best LGBTQ campuses searching the tool based on area of study, cost, location, type of campus and LGBTQ-inclusive policy, programs and practice for their college search.

Reminder: Learn more by signing-up for FREE to participate in Campus Pride's LGBTQ-friendly National College Fair Program in eight different cities and the [Campus Pride National Online College Fair](#).



HIGHLIGHTS & ORGANIZATIONS

📅 Upcoming events

👥 Groups & activities

📅 6/1/2016

Lavender Graduation



OVERALL CAMPUS PRIDE INDEX SCORE ★★★★☆ 4.5 of 5

The Campus Pride Index has a strong theoretical research foundation in LGBTQ current programs, practices and policies for safer, more inclusive campus learning environments. The index tool has been tested extensively since 2001 and recently updated with new, higher LGBTQ national benchmarks in 2015.

The Campus Pride Index is a vital tool for assisting campuses in learning ways to improve their LGBTQ campus life and ultimately shape the educational experience to be more inclusive, welcoming and respectful of LGBTQ and ally people. The index is owned and operated by Campus Pride, the leading national nonprofit organization for student leaders and campus groups working to create safer, more LGBTQ-Friendly learning environments at colleges and universities. Campus Pride commends the campuses participating in the index and their willingness to come out, be visible and actively advocate for improving higher education for LGBTQ people.

West Virginia University LGBTQ-friendly break-down by inclusion factors

Sexual Orientation Score ★★★★☆ 4.5 of 5

Gender Identity/Expression Score ★★★★☆ 4.5 of 5

📄 **LGBTQ Policy Inclusion** ★★★★☆ 4 of 5

🏢 **LGBTQ Support & Institutional Commitment** ★★★★★ 5 of 5

🎓 **LGBTQ Academic Life** ★★★★★ 5 of 5

👤 **LGBTQ Student Life** ★★★★★ 5 of 5

🏠 **LGBTQ Housing & Residence Life** ★★★★★ 5 of 5

🛡️ **LGBTQ Campus Safety** ★★★★☆ 4 of 5

🏥 **LGBTQ Counseling & Health** ★★★★☆ 4 of 5

📢 **LGBTQ Recruitment & Retention Efforts** ★★★★☆ 4 of 5



LGBTQ-FRIENDLY REPORT CARD What You Need to Know

📄 LGBTQ Policy Inclusion

- Non-discrimination statement inclusive of sexual orientation
- Non-discrimination statement inclusive of gender identity/expression
- Health insurance coverage to employees' same sex partner
- Accessible, simple process for students to change their name on university records and documents
- Accessible, simple process for students to change their gender identity on university records and documents

🏢 LGBTQ Support & Institutional Commitment

- Resource center/office with responsibilities for LGBTQ students
- Paid staff with responsibilities for LGBTQ support services
- Ally program or Safe Space/Safe Zone
- Actively seek to employ diversity of faculty & staff including visible, out LGBTQ people

Students have option to self-identify sexual orientation on admission application or post enrollment forms

Students have option to self-identify gender identity/expression on admission application or post enrollment forms

LGBTQ Academic Life

LGBTQ studies program

LGBTQ specific course offerings

Actively recruit faculty for LGBTQ-related academic scholarship

New faculty/staff training opportunities on sexual orientation issues

New faculty/staff training opportunities on gender identity issues

LGBTQ faculty/staff organization

LGBTQ Housing & Residence Life

LGBTQ living space, theme floors and/or living-learning community

Roommate matching for LGBTQ students to find LGBTQ-friendly roommate

Gender-inclusive housing for new students

Gender-inclusive housing for returning students

Gender-inclusive/single occupancy restroom facilities in campus housing

Gender-inclusive/single occupancy shower facilities in campus housing

Trains residence life and housing staff at all levels on LGBTQ issues and concerns

LGBTQ Counseling & Health

LGBTQ counseling/support groups

Trans-inclusive trained counseling staff

Free, anonymous and accessible HIV/STI testing

LGBTQ-inclusive health information and safer sex materials available

Trans-inclusive student health insurance policy which covers ongoing counseling services

Standing advisory committee that deals with LGBTQ issues

LGBTQ alumni group

LGBTQ Student Life

LGBTQ & Ally student organization

LGBTQ & Ally graduate student organization

LGBTQ social fraternity/sorority

Regularly plans LGBTQ social activities

Regularly plans educational events on transgender issues

Regularly offers educational events surrounding intersectionality of identities of LGBTQ people

LGBTQ-inclusive career services

LGBTQ Campus Safety

Procedure for reporting LGBTQ related bias incidents and hate crimes

Active ongoing training for hate crime prevention

Active outreach to LGBTQ students and student organization

Trains campus police on sexual orientation issues

Trains campus police on gender identity/expression issues

Supports victims of LGBTQ sexual violence and partner violence

LGBTQ Recruitment & Retention

Annually participates in LGBTQ admission fairs

LGBTQ student scholarships

LGBTQ mentoring program to welcome and assist LGBTQ students in transition to academic and college life

Special Lavender or Rainbow Graduation ceremony for LGBTQ students and allies

Admission counselors receive LGBTQ-inclusive training and resources

Trans-inclusive student health insurance policy which covers hormone replacement therapy



Want to find a campus based on its report card? Search now!

REPORT CARD SEARCH



Tweet



© 2006-2021 Campus Pride. All rights reserved.

Trademarks and logos are the property of Campus Pride.

COMMERCIAL USE OF THE CAMPUS PRIDE INDEX AND ANY FORM OF THE INFORMATION AVAILABLE ON THIS SITE IS NOT ALLOWED. THIS INCLUDES BUT IS NOT LIMITED TO ONLINE WEBSITES, COMPANIES OR OTHERS PROFITING AND/OR GENERATING WEB TRAFFIC USING THE DATA, IN WHOLE OR IN PART, AS CRITERION FOR PART OF A WEB LISTING, RESOURCE OR OTHER PURPOSES. ONLY BUSINESS ENTITIES WITH PRIOR WRITTEN PERMISSION EXPRESSLY BY CAMPUS PRIDE MAY DO SO. FAILURE TO COMPLY WILL RESULT IN LEGAL ACTION.

Use of this Web site constitutes acceptance of the User Agreement and Privacy Policy

Index Search College Resources FAQs College Fairs Who We Are Contact

OUR Partners