

CONNECT TO YOUR FUTURE

CLC CLASSES SPRING 2020 NONCREDIT COURSES

Professional
Development Courses

Innovative Learning Solutions
for Businesses

Illinois Small Business
Development and
International Trade Center

Personal Enrichment
Learning Experiences
for All Ages



CONNECT TO YOUR FUTURE AT THE COLLEGE OF LAKE COUNTY



The College of Lake County offers you opportunities to re-frame, re-imagine and re-engineer yourself as both a person and as a professional. No matter your age or your interests, there are workshops, training, programs and experiences designed for you.

PURSUE YOUR PASSIONS

Solve the “I wish I could” and bring an end to “wouldn’t it be nice if” statements and enroll in a Personal Enrichment experience this semester. Try our new Italian cooking class, explore your genealogy, sample mindfulness, learn to dance, explore textiles or try your hand at photography. If you have thought of it, we probably have too.

KIDS CAN GO TO COLLEGE, TOO!

STEAM and STEM are combined to bring fun and enrichment for children in grades 1-12. Try Explore for grades 1-8 where STEAM learnings at school become their wildest imagination. Our STEM classes through Engage are for grades 9-12 and provide STEM career experiences. Try out a career before

committing to it in school. Engage youth also can improve SAT and other test scores through SAT prep classes. Watch your mail for the summer camp brochure in February.

CREATE UPWARD MOBILITY IN YOUR PROFESSION

Develop a new skill or venture into a new career or new business through training and development in high-demand fields such as healthcare, manufacturing or real estate among others. Workshops and courses will enhance your current skills or develop new ones.

INVEST IN YOUR GREATEST RESOURCE – YOUR EMPLOYEES

Innovative training solutions for your department, team or company can be delivered at your location, a CLC campus or an off-site location locally, nationally or globally.

FIND YOURSELF AT CLC... WHAT WOULD YOU LIKE TO DO NEXT?

Explore our 9 Fields of Interest!



This is your life, your time, your journey, your path, your direction, your story. This is YOU.
College of Lake County is here to help.

EXPLORE THE COLLEGE OF LAKE COUNTY

CHOOSE YOUR PATH

Where do you want your career to go next? There are multiple learning opportunities for you. Enhance an existing skill, maintain a credential or discover a new field. To help you select your path, the College of Lake County has created fields of interest or clusters of programs that fit within a similar area. They are designed to help you choose a path based on your future goals, knowledge, skills and abilities.

Professional Development courses and workshops are aligned with these fields of interests. Take a workshop or two or pursue a certificate or academic degree. It is now easier to navigate your unique career path.

ENDEAVOR

Active learning experiences challenge your mind and body. Try something new or revisit an old interest. Genealogy, cooking and mindfulness are new this spring. Life-long learning is fun.

Enjoy life.

Engage your passions.

Experience your endeavors and thrive.



COLLEGE OF LAKE COUNTY: PROUD PAST BOLD FUTURE

WORKFORCE AND PROFESSIONAL DEVELOPMENT INSTITUTE

- Professional Development
- Illinois Small Business Development and International Trade Center
- Talent Development Services

For more information:

Call: (847) 543-2990

Email: wpdi@clcollinois.edu

Visit: www.clcollinois.edu

COMMUNITY PROGRAMS

Judicial Services

For more information:

Call: (847) 543-2185

Email: judicialservices@clcollinois.edu

Personal Enrichment

For more information:

Call: (847) 543-2980

Email: CPEinfo@clcollinois.edu

Visit: www.clcollinois.edu

Grayslake Campus

19351 W. Washington St., Grayslake, IL 60030

Lakeshore Campus

33 N. Genesee St., Waukegan, IL 60085

Southlake Campus

1120 S. Milwaukee Ave., Vernon Hills, IL 60061

Board of Trustees

William M. Griffin, Ed.D., *Chair*

Catherine M. Finger, Ed.D., *Vice Chair*

Richard A. Anderson, *Secretary*

Amanda D. Howland

Timothy S. Powell

Julie B. Shroka

Matthew J. Stanton

Alexa Waheed, *Student Trustee*

Lori Suddick, Ed.D., *President*

EXPLORE & ENGAGE WITH CLC SUMMER CAMPS

Camps at CLC combine fun and academic enrichment. Registration opens March 2, 2020.

EXPLORE: STEAM based academic enrichment, taught by experienced educators, fun for grades 1-8

ENGAGE: STEM based career explorations & innovative experiences for teens in grades 9-12.

For more information: (847) 543-2980 | CPEinfo@clcollinois.edu | www.clcollinois.edu/summercamps



Professional Development

Affordable and conveniently scheduled courses taught by industry experts.

Enhance your job skills in person and online!

Hundreds of self-paced and instructor-led courses are now available at www.clcillinois.edu/professional/onlinecourses.



Arts, Entertainment, and Hospitality
 ServSafe Food Protection Manager Certification 2

Business and Information Technology
 Project Management 3
 Lean Six Sigma Certification 4
 Real Estate 5
 Information Technology 7

Education and Social Sciences
 Social Worker CEs 9
 Personal Success Program 10
 Teacher Education PDs 12

Legal Studies and Public Safety
 Evidence Technician 13
 Security Officer Training 13

Manufacturing, Engineering, and Advanced Technologies
 Electrical and Building Inspection 14
 Home Inspection 14
 Forklift Operator Training 15
 Truck Driver Training (CDL) 15

Wellness and Health Sciences
 CPR 16
 CNA Re-Certification 17
 NLN Pre-Entrance Exam Preparation 17
 Personal Care Aide 17
 Pharmacy Technician Training 18
 Veterinary Assistant Training 19

Continuing Education Certificates 20

Small Business Workshops 21

Apply, Register and Pay 51



Arts, Entertainment, and Hospitality

Are you the person that always knows the best restaurants and events in Lake County? Come be part of the action! Whether you dream of working at a local brewery, creating fine dining meals or anything in between, these courses may be for you.



SERVSAFE FOOD PROTECTION MANAGER CERTIFICATION

This course will prepare you to be certified or re-certified through the National Restaurant Association ServSafe Foundation. You will cover all major sanitation points, including how food becomes unsafe, proper precautions, personal hygiene, food contamination, regulations and inspection standards. The nationally recognized ServSafe Exam is given as part of this course. Upon successful completion of the ServSafe Exam, you will receive a copy of your ServSafe Food Protection Manager certificate, which is nationally recognized. **Note:** As of January 1, 2018, the Illinois Department of Public Health will no longer require a state FSSMC certificate.

A textbook is required and may be purchased in the CLC Bookstore prior to class. **Note:** It is highly recommended that students read the textbook and review chapter quizzes prior to class in order to prepare for the certification test at the end of the course.

7454 PHOS 5-001

Monday and Wednesday, February 24-26
8 a.m. to 1 p.m.
2 Sessions
Southlake Campus, R022
\$99 V. Balice Jr.

7455 PHOS 5-002

Monday and Wednesday, March 30 to April 1
8 a.m. to 1 p.m.
2 Sessions
Grayslake Campus, E125
\$99 V. Balice Jr.

7456 PHOS 5-003

Monday and Wednesday, April 27-29
8 a.m. to 1 p.m.
2 Sessions
Grayslake Campus, E125
\$99 V. Balice Jr.

Online Offerings Include:

- Catering Professional
- Event Management and Design
- Food and Customer Service Skills Training
- Hotel Management
- Wedding & Event Planner

Complete online course selection available at www.clcillinois.edu/professional/onlineclasses

Need to buy a textbook? Visit www.clcillinois.edu/bookstore for bookstore hours and information.

Fascinated by food? Made to multi-task? Check out CLC's Hospitality & Culinary Management Program at www.clcillinois.edu/programs/hcm



Business and Information Technology

The business world is always improving with new software, systems and ways to be more effective. These courses will help give you cutting edge skills to make a positive impact on your current and future organizations.

Project Management

PROJECT MANAGEMENT PROFESSIONAL SERIES

Completion of these three classes will provide you with the 35 professional development units (PDUs) required to obtain your PMP Certification and prepare you for the PMP exam.

Note: Due to the process involved in offering these classes, students will not be allowed to withdraw for refund 7 business days prior to the first day of class. Classes are scheduled as “drop by department consent” 7 business days prior to the start date.

TAKE THE SERIES AND SAVE!

7559 PPRO 88-001
Wednesday, January 29 to February 26
8:30 a.m. to 5 p.m.
5 Sessions
Grayslake Campus, E121
\$1349 A. Kaufman

Classes can be taken individually:

ESSENTIALS OF PROJECT MANAGEMENT

This two-day, hands-on session, led by a certified PMP, will give you practical insights on how to deliver your projects more reliably. In addition, you will qualify for 14 contact hours toward your project management certification or 14 PDUs if you are already certified.

7556 PPRO 85-001
Wednesday, January 29 to February 5
8:30 a.m. to 4:30 p.m.
2 Sessions
Grayslake Campus, E121
\$525 A. Kaufman



Andy



Barrett

PMP® is one of the most sought-after certifications in the world. The training is universal and applicable across industry and location. Just look to the Kaufman family for two prime examples.

Andy has managed and led business teams for over thirty years. He works with leaders of multinational corporations and the United Nations to improve their ability to lead and deliver. His son, Barrett, founded a film production studio and has managed projects from pre-production to distribution over the past decade.

Both Barrett and Andy bring their unique experiences to the classroom, preparing individuals for the Project Management Professional and Agile Project Management Certifications. Join them this spring to further your own ability to lead and deliver!

ADVANCED PROJECT MANAGEMENT
Based on the Project Management Institute's (PMI®) PMBOK® Guide, you will get in-depth instruction on advanced topics such as earned value, procurement management, stakeholder relationship management, quality management and team leadership.

7557 PPRO 86-001
Wednesday, February 12-19
8:30 a.m. to 4:30 p.m.
2 Sessions
Grayslake Campus, E121
\$525 A. Kaufman

PROJECT MANAGEMENT PROFESSIONAL (PMP) EXAM PREP
Join us for this intensive, one-day session designed to get you on the path to achieving your goal of becoming PMP certified.

Comprehensive study material is provided, including a hard copy of the latest edition of *A Guide to the Project Management Body of Knowledge* (PMBOK® Guide) and two top-rated prep guides.

7558 PPRO 87-001
Wednesday, February 26
8:30 a.m. to 5 p.m.
1 Session
Grayslake Campus, E121
\$425 A. Kaufman

Are you a licensed PMP?

PMP holders need to earn 60 professional development units (PDUs) over three years to maintain the credential. If you are looking for a convenient way to refresh your skills and earn PDUs, sign up for Essentials of Project Management and Advanced Project Management and earn 14 PDUs for each section. Call (847) 543-2990 for more information.

Note: Experience, education and exam requirements are needed to obtain PMP certification in addition to the project management education fulfilled by the three courses offered here. For more information, visit www.clcillinois.edu/professional/projmgmt.



NEW! LEAN SIX SIGMA CERTIFICATION IN-PERSON WORKSHOP

Does your company spend too much to meet customer expectations? Is your organization struggling with processes that seem too slow, rigid, prone to errors or hard to manage? Do you find yourself fire-fighting every day, without visible improvements? Are you looking to earn one of the most valuable professional certificates?

Join us for the Green Belt 2.0® Lean Six Sigma Certification Workshop. This five-week course, taught by certified Black Belts, will give you the thinking, methods and tools needed to solve problems and stay on top of change. Gain access to dozens of videos and hundreds of practice exam questions. The perfect complement to your PMP.

Participants will learn:

- The Green Belt body of knowledge in a form that is immediately useful at work.
- How to spot and solve problems, working in teams and individually.
- The best methods for problem-solving, continual improvement of operations and personnel development.

Class fee includes all materials, practice exams, final exam grading, project review and certification diploma. Participants must supply their own laptop PC with MS Excel 2010 or newer. Must know Excel basics and charting.

7560 PPRO 92-001

Tuesday and Thursday
 January 21 to February 20
 6- 9:30 p.m.
 10 Sessions
 Grayslake Campus, E121
 \$1549 F. Pulgar-Vidal

Continuing Education Vocational Credits Note: Continuing Education Vocational Credits do not apply to any degree or certificate program offered at the college in the academic divisions. Vocational credits will not be added to a student's academic credit hours or included in the GPA. Students receive a grade of P (Pass) or N (No Pass). Call (847) 543-2990 for more information.

Would your organization benefit from onsite training? Contact CorporateTraining@clillinois.edu to start a conversation about innovative learning solutions.

Real Estate

Learn more about real estate by attending a **FREE** information session on **January 16, 2020 from 6:30-8:30 p.m., Room V336** at the Southlake Campus in Vernon Hills. Visit www.clcillinois.edu/wpdi/infosessions for more information.



Wayne

“What a great experience [this] class was! Between applying the topics to real life scenarios and interesting speakers, I was completely blown away by all of it.”

– Spring 2019 Student

Not only has Wayne Paprocki achieved financial success working in the real estate industry, he has been nationally recognized for sharing his talents through education and mentorship. His vast experience enables Wayne to teach students everything they could want to know about how to succeed in real estate. Learn selling strategies through Wayne’s captivating tales this spring!

PRE-LICENSING TOPICS CLASSROOM

This 75-hour course will prepare you for the educational requirements to obtain your broker’s license in Illinois. You are required to attend all sessions, which include: introduction to the license law and real property; basics of agency, seller and buyer relationships and counseling; local, state and federal laws effecting real estate; brokerage, marketing and advertising; market analysis and appraisal; financing, contracts, independent contractor and employee status, occupational disciplines and business planning.

7563 PRLE 2-001

Tuesday and Thursday
February 6 to March 10
5:30- 10 p.m.

AND

Saturday, February 8 to March 7
8 a.m. to 2 p.m.
15 Sessions
Southlake Campus, V328
\$699

7564 PRLE 2-002

Tuesday and Thursday
March 31 to May 7
5:30- 10 p.m.

AND

Saturday, April 4 to May 2
8 a.m. to 2 p.m.
15 Sessions
Southlake Campus, V328
\$699

BROKER PRE-LICENSING TOPICS ONLINE

This Internet-based class is offered as an option for completing the 75 hours of the broker pre-licensing curriculum without having to attend class meetings. Students can access the Internet learning portal 24 hours a day and reach out to the instructor M-F. A visit to the Grayslake Campus on Monday, February 17 from 5:15-6:15 p.m. is required for orientation and students will be required to take their final exam on campus.

7619 PRLE 2-981

February 17 to April 17
Online 24/7
\$699

A textbook is required for these courses and may be purchased in the CLC Bookstore prior to class. Visit www.clcillinois.edu/bookstore for hours and information.

COMING SOON!

STATE OF ILLINOIS LICENSING AND EDUCATION CHANGES

Pre-license and post-license curriculum is changing to adapt to needed skills in the real estate field. New curriculum will include situational and case studies, applied brokerage principles, risk management and transactional issues. Refer to the Illinois Division of Real Estate website (IDFPR.com) for continued updates.



REAL ESTATE HOME STAGING 101

First impressions matter, especially when it comes to selling real estate property. Through this home staging class, you will learn techniques to prepare your property to be the most desirable listing on the market. Learn what catches a buyer's eye and what will set you apart from the competition. Realtors, homeowners, investors and builders will benefit from our instructor, who has helped homes sell quickly with her unique ideas and strategies.

7566 PRLE 41-001

Thursday, February 13
6- 9 p.m.
1 Session
Grayslake Campus, E125
\$69 J. Delacluysse

7567 PRLE 41-002

Wednesday, March 11
2- 5 p.m.
1 Session
Grayslake Campus, E125
\$69 J. Delacluysse

BEAUTIFYING A HOME WITH THE RIGHT COLORS

For a home to look its best, it should have paint colors that complement the finishes in the home. Studies have shown that the wrong paint colors are one of the top five reasons that people will not be interested in a home. Many people take a "one color fits all" approach to selecting paint colors, but every home is unique and needs just the right colors to create maximum appeal. Whether you are buying or selling a home or simply redecorating, this course will help you to select paint colors that bring out the best in the home.

7568 PRLE 42-001

Thursday, April 9
6- 9 p.m.
1 Session
Grayslake Campus, E121
\$69 J. Delacluysse

Information Technology

Unsure which Excel level is right for you? Call (847) 543-2990 or email professionalworkshops@clcillinois.edu for help!

Note: A textbook is required for each Excel class (except when noted) and may be purchased in the CLC Bookstore prior to class.

Visit www.clcillinois.edu/bookstore for hours and information.



MICROSOFT EXCEL: LEVEL 1

Learn to create a basic worksheet and modify the contents and appearance. You will perform calculations, modify the appearance of data within a worksheet, manage Excel workbooks and print the contents.

7480 PCTR 15-001

Saturday, February 8
9 a.m. to 5 p.m.
1 Session
Grayslake Campus, E127
\$195 S. Bajt

7508 PCTR 15-002

Tuesday, February 11
9 a.m. to 5 p.m.
1 Session
Grayslake Campus, E127
\$195 C. Horwitz

7509 PCTR 15-003

Thursday, April 2
9 a.m. to 5 p.m.
1 Session
Southlake Campus, V102
\$195 J. Besser

MICROSOFT EXCEL: LEVEL 2

Learn how to work faster and more productively by using many of Excel's powerful features. Organize worksheet and table data using various techniques. Create and modify charts, work with graphic objects, calculate with advanced formulas, sort and filter data and analyze data using PivotTables, Slicers and PivotCharts.

Prerequisite: Microsoft Excel Level 1 or equivalent knowledge and use of advanced formulas.

7522 PCTR 16-001

Saturday, February 22
9 a.m. to 5 p.m.
1 Session
Grayslake Campus, E127
\$195 S. Bajt

7523 PCTR 16-002

Tuesday, February 25
9 a.m. to 5 p.m.
1 Session
Grayslake Campus, TBA
\$195 C. Horwitz

7525 PCTR 16-003

Thursday, April 16
9 a.m. to 5 p.m.
1 Session
Southlake Campus, V102
\$195 J. Besser

MICROSOFT EXCEL: LEVEL 3

Upon successful completion of this course, students will be able to troubleshoot large, complex workbooks, automate repetitive tasks, engage in collaborative partnerships involving workbook data, construct complex Excel functions and use those functions to perform rigorous analysis of extensive, complex datasets using conditional logic to construct and apply elaborate formulas.

Prerequisite: Microsoft Excel Level 2 or equivalent knowledge.

7530 PCTR 17-001

Saturday, March 7
9 a.m. to 5 p.m.
1 Session
Grayslake Campus, E127
\$195 S. Bajt

7531 PCTR 17-002

Tuesday, March 17
9 a.m. to 5 p.m.
1 Session
Grayslake Campus, E127
\$195 C. Horwitz

7532 PCTR 17-003

Thursday, April 30
9 a.m. to 5 p.m.
1 Session
Southlake Campus, V102
\$195 J. Besser

SPECIALIZED TRAINING IN GOOGLE IT SUPPORT PROFESSIONAL CERTIFICATE

IT Support is one of the fastest growing fields in the United States. This new, innovative program will prepare you for an entry-level job in approximately eight months, while giving you the flexibility to work at your own pace. No previous experience with computers is necessary, just a desire to learn.

- 215,000 IT support jobs are unfilled across the United States.
- 84% of learners report a career impact within six months, such as getting a raise or finding a new job.
- 35+ top employer partners are eager to learn about those who complete this certificate.
- 57% of learners enrolled do not have a four-year degree.

This course is part of a new initiative by Google, based on the training that it developed to prepare its own IT support staff. This certificate program consists of online courses related to technical support fundamentals, computer networking, operating systems, system administration, IT infrastructure and IT security. Students will complete work through Coursera, with a combination of lectures, quizzes and hands-on lab activities.

Students will be guided by a local instructor to provide additional explanations and examples. Students will also be able to receive customized support about employment opportunities in the area. Please note that registering for this course is the first in a series, scheduled to be completed over summer and fall 2020, with no additional costs.

7541 PCTR 91-001

January 21 to May 15
Online 24/7
\$199 Staff

MICROSOFT EXCEL PIVOTTABLES

In this half-day class, learn how to use PivotTables to selectively summarize and analyze large amounts of data. Learn how to interact with the PivotTable data by filtering, sorting and manipulating report formats and how to use sophisticated slicers to further analyze data. Discover how to create a chart from a PivotTable, modify the PivotTable and use a variety of options to adapt to their information needs. This analysis allows users to answer common business questions about their data. Supplemental materials will be provided in class.

7533 PCTR 27-001

Tuesday, March 31
8 a.m. to 12 p.m.
1 Session
Grayslake Campus, E127
\$115 C. Horwitz

SPECIALIZED TRAINING IN MICROSOFT EXCEL CHARTING AND GRAPHING

In this half-day class, learn how to create a variety of charts and graphs to be able to visually see and analyze data. Learn how to modify, format and present charts to graphically display data. Supplemental materials will be provided in class.

7534 PCTR 28-001

Tuesday, March 31
1-5 p.m.
1 Session
Grayslake Campus, E127
\$115 C. Horwitz

ONLINE OFFERINGS INCLUDE:

- Android App Developer
- CompTIA Linux+ and Unix Training
- Front-End Web Developer
- Java Programmer
- Web Applications Developer

MICROSOFT POWERPOINT: LEVEL 1

PowerPoint is an intuitive, powerful presentation graphics program that enables you to create dynamic, multimedia presentations for a variety of functions. You will create, design and deliver a presentation by learning to insert and modify a chart, insert tables and graphs, use clip art and animation to enhance your presentation.

7528 PCTR 30-001

Saturday, April 4
9 a.m. to 5 p.m.
1 Session
Grayslake Campus, E127
\$195 S. Bajt

MICROSOFT POWERPOINT: LEVEL 2

PowerPoint is an intuitive, powerful presentation graphics program that enables you to create dynamic, multimedia presentations for a variety of functions. This course builds on what was learned in the Level 1 class and is ideal for those that use PowerPoint regularly.

7529 PCTR 31-001

Tuesday, April 21
9 a.m. to 5 p.m.
1 Session
Grayslake Campus, TBA
\$195 C. Horwitz

MICROSOFT PROJECT: LEVEL 1

Create a project plan file and enter project information. Learn to create a work breakdown structure by organizing and setting task relationships, assign project resources and finalize the project plan file.

7535 PCTR 70-001

Thursday, May 7
9 a.m. to 5 p.m.
1 Session
Southlake Campus, V102
\$195 J. Besser

A complete list of Professional Development's online classes is available at www.clcillinois.edu/professional/onlineclasses. These courses are instructor-led, online courses that are provided by one of our learning partners. You do not need to have a CLC student ID number to enroll, as all registration and payment will be handled by the learning partners. These courses are not accessed through Blackboard; you will receive log-in information after enrollment. Questions? Call (847) 543-2990 or email professionalworkshops@clcillinois.edu.



Education and Social Sciences

Designed for those looking to keep up-to-date on current trends in teaching or build on their vocational skills, these courses are perfect for current educators and those that love to learn.

Social Worker CEs

The PSWC courses are co-listed classes and originated as “for credit courses” that students on a degree track can take for credit. We are opening up the classes for social workers and counselors who wish to earn CE units. While the rigor of the course is less for CE students, as tests and some assignments may be optional, this is still a college-level course and some work will be required so that CE students can contribute to thoughtful and meaningful discussions with the class. Attendance is required and students will lose CE unit hours if class time has to be missed. The classes will be graded pass/no pass.



Interested in the field of social work? Visit www.clcillinois.edu/programs/swk and learn about CLC’s transfer degree programs.

PERSONALITY DISORDERS AND SUBSTANCE USE

Many people dealing with substance use disorders struggle mightily in their interactions and relationships with others as well. For some, it’s a natural consequence of the havoc the substance has wreaked in their lives; for others, it’s an issue that may even predate their use. Among clients who seek help for addiction and substance use issues, there are many who are also diagnosed with personality disorders. Students in this course will learn about the most common personality disorders, their comorbidity with substance use disorders and how to best approach treatment for clients with these coinciding diagnoses. Eligible for 15 CEs to licensed social workers/counselors.

7562 PSWC 7-800

March 30 to April 27

Online

\$99 Mick Cullen

PREPARING FOR THE CADC EXAM

The CADC Exam has been revised to be a more rigorous test overall with more stringent cut-offs. This course reviews the requirements for certification as a Certified Alcohol and Drug Counselor through IAODAPCA, familiarizes students with the certification process and helps to prepare them for the written examination. The new Domain areas, test-taking strategies, examination references, anxiety and stress reduction tactics and other approaches for increasing knowledge and test-taking confidence will be covered.

7561 PSWC 11-001

Monday, February 17 to March 9

6-8:50 p.m.

4 Sessions

Grayslake Campus, C243

\$99 Staff



PSP Class held off campus at Youthage Culinary, Waukegan

INTRODUCTION TO CULINARY ARTS

This course is designed to give young adults an opportunity to receive hands-on training, as well as prepare them for real-life experiences involving culinary arts. Students will learn leadership skills, organizational skills and how to live healthier lifestyles. The program will provide trainees with the opportunity to practice and develop technical skills required to enter the workforce, while also promoting confidence-building.

7518 PPSP 16-001

Friday, February 21 to April 17

(No class March 27)

10 a.m. to 12 p.m.

8 Sessions

Off Campus, Youthage Culinary

\$425 R. Collins

PSP Class offered at the Southlake Campus in Vernon Hills

NEW! WELLNESS FOR WORK AND LIFE

This course focuses on healthy lifestyles in one's work and personal life through a holistic approach to wellness. By participating in the interactive lessons and discussions, students will learn how to adopt healthy behaviors that can help build strength, confidence and improved well-being. Topics include nutrition, exercise, stress reduction, mental wellness and self-care. Students will also tour the CLC Center for Health and Wellness and learn first-hand about careers in Health Promotion. As a result of this class, students will have tools to help them grow and thrive through balanced work and personal lives, as well as knowledge of job opportunities in the Health and Wellness field.

7519 PPSP 35-001

Wednesday, February 12 to May 6

(No class March 25)

9:15- 11:15 a.m.

12 Sessions

Southlake Campus, V310

\$399 G. Johnson

Personal Success Program

The Personal Success Program (PSP) offers a variety of vocational courses to meet the needs of students 18 years and older with mild to moderate cognitive impairment. The program's focus is on gaining vocational skills to acquire entry-level employment.

Each class is led by a content expert who has experience teaching people with disabilities. A special education teacher is present in most classes to provide additional support. The curriculum is designed to be delivered at a level and pace appropriate to each student's needs.

All new students must be interviewed by the program coordinator to determine eligibility prior to enrolling in classes. For a new student interview, please call (847) 543-2990. Visit www.clcillinois.edu/professional/personalsuccess for course information and a spring 2020 registration form.

PSP classes offered at the Grayslake Campus**NEW! ESSENTIAL EMPLOYABILITY SKILLS**

Essential employability skills are the general skills required to be successful in all sectors of the labor market. These are separate from the technical skills attained in career pathways or academic skills, such as math and reading. The Essential Employability Skills Framework focuses on the specific areas where skill gaps currently exist, particularly those considered high priority by employers.

The objective of this class is to support employability in seven essential areas:

- Interpersonal Skills and Teamwork
- Communications
- Integrity and Professionalism
- Problem Solving and Decision Making
- Initiative and Dependability
- Information Processing
- Adaptability and Lifelong Learning

Each area will delve into the skills needed to secure and maintain employment, as well as thrive in these opportunities.

7521 PPSP 22-001

Thursday, February 6 to May 7
(No class March 26 and April 2)
9:15- 11:15 a.m.
12 Sessions
Grayslake Campus, L032
\$399 C. Jackson

READING FOR THE WORKPLACE 2

This is a continuation class for students in the fall semester Reading for the Workplace course. Unlock the keys to better reading and spelling to help you be more successful at work and in your daily life. This class will focus on “pil/grim” and “pump/kin” words, vowel teams, r-controlled vowels and homophones. You will learn by seeing, hearing and physically experiencing the concepts. The first part of class will feature lessons based on the SLANT System for Structured Language Training. The last portion will consist of reading and spelling games and activities to practice the previously taught concepts.

Method of Instruction:

Multisensory structured literacy, discussion, interactive activities, computer-based activities. Maximum six students per class.

Prerequisite: Completion of Reading for the Workplace or Minimum 6th grade reading decoding level. All students must be assessed by the SLANT Phonics Survey and the Johns Basic Reading Inventory Word Lists before starting the class and at the end of the class.

7511 PPSP 4-001

Tuesday, February 11 to May 5
(No class March 24)
10 a.m. to 12 p.m.
12 Sessions
Grayslake Campus, E118
\$399 M. Berman

7512 PPSP 4-002

Tuesday, February 11 to May 5
(No class March 24)
12:30- 2:30 p.m.
12 Sessions
Grayslake Campus, E118
\$399 M. Berman

READING FOR THE WORKPLACE 4

This is a continuation class for students who have completed Reading for the Workplace 3. Unlock the keys to better reading and spelling to help you be more successful at work and in your daily life. This class will focus on suffixes, the doubling rule, igh, ph, ea (bread), ou (soup) and the -dge rule. More emphasis will be placed on comprehension. You will learn by seeing, hearing and physically experiencing the concepts. The first part of the class will feature lessons based on the SLANT System for Structured Language Training. The last portion will consist of reading, spelling and comprehension activities to practice the previously taught concepts.

7513 PPSP 17-001

Wednesday, February 12 to May 6
(No class March 25)
12:30- 2:30 p.m.
12 Sessions
Grayslake Campus, E118
\$399 M. Berman

NEW! COMPUTER APPLICATIONS FOR ASPIRING ENTREPRENEURS

This exciting and practical course is for individuals who are interested in starting their own pet sitting or similar business. Learn how to use computer applications for all your business needs. You will create and design:

- Pet sitting flyers
- Business cards
- Client-pet information form
- Pet report card
- Client schedule
- Service invoice template
- Sales income spreadsheet
- Promotional advertisements
- Pet sitting website
- Custom eye-catching logo and graphics

While this class is specifically geared to a pet sitting business, the concepts and skills that students are learning could be applied to other business ideas.

7520 PPSP 19-001

Tuesday, February 11 to May 5
(No class March 24)
10 a.m. to 12 p.m.
12 Sessions
Grayslake Campus, L032
\$399 C. Kurtzhaltz

Teacher Education PDs

The PTCH courses are co-listed classes and originated as “for credit courses” that students on a degree track can take for credit. We are opening up the classes for teachers who wish to earn PDs. While the rigor of the courses is less for PD students, as tests and some assignments may be optional, this is still a college-level course and some work will be required so that PD students can contribute to thoughtful and meaningful discussions with the class. Attendance is required and students will lose PD hours if class time has to be missed. The classes will be graded pass/on pass.

NEW! BULLYING AND THE CLASSROOM

In this hybrid course, the students will explore the social, psychological and cultural contexts of bullying and the strategies that schools and teachers can use to prevent, respond to and/or eliminate bullying. This will include an in-depth understanding of how bullying occurs at all levels of development and how technology frames this phenomenon as well. Students will develop a perspective of how bullying impacts the victim, the bully, parents and teachers. This course is useful to teacher candidates, practicing teachers, parent educators, support staff and community leaders who are interested in how to address the cause and create a solution to this impactful problem. Eligible for 15 PDs for teacher continuing education.

7577 PTCH 36-600

Thursday, January 23 to February 20
6- 8:45 p.m.
5 Sessions
Grayslake Campus, D129
\$99 P. Fortini

NEW! TECHNOLOGY AND THE COMMON CORE

This hybrid course will take an in-depth look at the K-12 Common Core standards, with a particular focus on the embedded technology standards. Students will explore different apps, websites and software to develop the knowledge and skills they will need to determine the best use of current technologies. Topics include the core standards and how to decipher them, who your students are today, parent education, staff development, roadblocks and ways to obtain equipment and software/apps for your classroom. A special emphasis is placed on best practices and lesson designs to successfully integrate technology into K-12 curriculum. Students just beginning their journey to becoming a teacher, as well as certified educators and support staff, will benefit from taking this course. Eligible for 15 PDs for teacher continuing education.

7578 PTCH 37-600

Wednesday, March 4 to April 8
6- 8:45 p.m.
5 Sessions
Grayslake Campus, C276
\$99 V. Morrison

NEW! TRAUMA INFORMED TEACHING

This hybrid course will examine how trauma frames student learning and the ways that it re-configures what we think of child development and effective and culturally relevant practice. The discussion will focus on how to change the lens in which schools, teachers and community leaders look at and support student learning and appropriate response to trauma. This course is useful to teachers of all levels, school support staff and community leaders. Eligible for 15 PDs for teacher continuing education.

7579 PTCH 38-600

Tuesday, April 14 to May 12
6- 8:45 p.m.
5 Sessions
Grayslake Campus, D129
\$99 S. Garvin

COMING SUMMER 2020!

NEW! FORENSIC CLASSROOM – ENHANCING STEM PROFICIENCY WITH DETECTIVE SCIENCE

Forensic Crime Scenes in the Classroom is a six-day workshop for educators who want to use crime scene investigation content to engage their students in the science curriculum. This hands-on program will help educators understand the tools, techniques and scientific principles of crime scene investigations.

The course material is designed to assist teachers in meeting the National Science Education Standards for developing meaningful, high-interest, inquiry-based classroom activities involving real-world problem solving.

Participants will draw on the practical knowledge and abilities of experienced law enforcement officers in order to become familiar with content that will captivate the imagination and interest of their students. Participants will also have the opportunity to work with various crime scene processing equipment, be exposed to real-life crime scene examples and learn practical exercises that they can immediately take back to the classroom. Eligible for 48 PDs for teacher continuing education.

Save the date - July 22, 23, 24 and 27, 28, 29,
8 a.m. to 4 p.m.
\$699

For more information, contact
professionalworkshops@clcillinois.edu.

ONLINE OFFERINGS INCLUDE:

- Differentiated Instruction in the Classroom
- Empowering Students with Disabilities
- Substitute Teacher Preparation

Complete online course selection available at
www.clcillinois.edu/professional/onlineclasses

Interested in becoming a teacher? Check out CLC’s Education program! www.clcillinois.edu/programs/edu



Legal Studies and Public Safety

For those interested in Protective Services, these classes are a great place to start.

Learn more about the career opportunities in Criminal Justice with the CLC program! www.clcillinois.edu/programs/crj



Michael

Michael Jimenez started his career as an armed security officer. His desire to serve his community spread across roles in the U.S. Army, multiple police departments, the U.S. Border Patrol and most recently the Federal Air Marshal Service in the U.S. Department of Homeland Security. Michael has spent over twenty years educating others in topics such as tactical operations, counterterrorism, and firearms. After over five million miles flown around the world protecting and teaching others, Michael has landed at the College of Lake County!

The Bureau of Labor Statistics projects that security officer positions will continue to grow over the next decade. This is the perfect time to learn from an expert on how to launch your protective services career!

ONLINE OFFERINGS INCLUDE:

- Explore a Career as a Paralegal
- Federal Court Interpreter
- Workplace Mediation

Complete online course selection available at www.clcillinois.edu/professional/onlineclasses

NEW! POLICE EVIDENCE TECHNICIAN BASIC

Law enforcement officers will develop CSI skills which will give them the knowledge and practical experience to do every forensic and evidence technician investigation in a professional manner. Topics include photography of crime scene and evidence, diagrams and field sketches, crime scene processing, trace evidence, bloodstain evidence, crime scene management and fingerprint processing. Special emphasis will be given in burglary, theft, fire and arson investigations, death and sexual assault investigations, impression evidence, macro photographic techniques, tool and bite marks, firearms and report writing. Students must bring departmental camera, tripod and flash. This course is certified and reimbursable through the Illinois Law Enforcement Training and Standards Board for Illinois officers.

The Evidence Technician class is designed for law enforcement professionals; however, we have opened seats to college students in forensic science studies, high school forensic science teachers and insurance or fire investigators. Requests to attend will be reviewed and approved on a case-by-case basis. Contact (847) 543-2990 or professionalworkshops@clcillinois.edu to determine eligibility.

7527 PCJI 10-001

Monday to Friday, February 24 to March 6
8 a.m. to 5 p.m.
10 Sessions
Grayslake Campus, E124
\$1450 M. Wasowicz

Funded Program in Criminal Justice!

Interested in a private security and loss prevention program?
Contact aed.studentsuccess@clcillinois.edu or (847) 543-2024 to learn more about a funded opportunity running January 2020 through March 2021!

SECURITY OFFICER BASIC TRAINING

Are you interested in finding a career in the security field as an unarmed security guard or would you like to enhance your present job skills and earn state certification? Security officer basic training will prepare new security officers and experienced employees for employment with a certified agency under the Illinois Private Detective, Private Security and Private Alarm Act. This course covers the security code of ethics, public and human relations, Illinois Criminal code, fire and accident prevention, patrol procedures, liabilities, report writing, use of force, fire and safety equipment and search and seizure procedures.

7524 PPSI 5-001

Monday to Friday, March 9-13
5:30- 9:30 p.m.
5 Sessions
Grayslake Campus, E121
\$199 M. Jimenez

SECURITY OFFICER FIREARM TRAINING

This course is for individuals who have completed the 20-hour security officer basic training course as mandated by the Illinois Private Detective, Private Security and Private Alarm Act. Course topics include legal use of firearms, liability while armed, firearms safety and maintenance, range procedures and range qualifying. A written test, firing range practice and final qualification follow classroom instruction. A current Illinois Firearm Identification Card (FOID) is mandatory to receive firearms training. **Prerequisite:** Security Officer Basic Training course or proof of equivalent training.

7526 PPSI 6-001

Monday to Friday, April 20-24
Last night at the range
5:30- 9:30 p.m.
5 Sessions
Grayslake Campus, E121
\$249 M. Jimenez



Manufacturing, Engineering and Advanced Technologies

There is a high demand in Lake County for workers ready to design, build and drive. When you're ready to use your hands-on skills to build a new career, these courses are for you!



NEW! RESIDENTIAL ELECTRICAL INSPECTOR (E1)

This 12-week test preparation course will introduce students to the fundamental code requirements for proper installation of electrical systems in residential buildings. Students will obtain a firm foundation of electrical equipment, materials and installation techniques, as well as the knowledge necessary to take the Residential Electrical Inspector Certification Exam offered by the International Code Council (ICC). The instructor will identify and discuss general requirements of installations, services, bonding and grounding, wiring methods, swimming pools and more.

The class will also include an array of practice tests, timed comprehensive exams and an expanded guide of applicable code sections pertinent for the final exam. All Students will be encouraged to test for ICC Residential Electrical Inspector Certification. (E1).

Students must independently purchase and bring to class the following book:
2015 International Residential Code, ISBN: 9781609834708

Classes located at 5105 Tollview Dr., Suite 270, Rolling Meadows, IL 60008

7503 PRLE 77-001

Wednesday, January 29 to April 15
6- 9 p.m.
12 Sessions
Off Campus – Rolling Meadows, IL
\$850 H. Viramontes
14

NEW! RESIDENTIAL BUILDING INSPECTOR (B1)

This 12-week test preparation course focuses on the use and application of basic building planning requirements for wall, floor, ceiling, roof framing and materials in one and two-family dwellings. The instructor will identify and discuss code requirements for soils, footing and foundations, light and ventilation, ceiling height, minimum room sizes, emergency escapes and rescue openings, smoke detectors and carbon monoxide detectors.

The class will also include an array of practice tests, timed comprehensive exams and an expanded guide of applicable code sections pertinent for the final exam. All Students will be encouraged to test for ICC Residential Building Inspector Certification. (B1). Students must independently purchase and bring to class the following book:
2015 International Residential Code, ISBN: 9781609834708

Classes located at 5105 Tollview Dr., Suite 270, Rolling Meadows, IL 60008

7504 PRLE 78-001

Thursday, January 16 to April 2
6- 9 p.m.
12 Sessions
Off Campus – Rolling Meadows, IL
\$850 P. Matyja

Home Inspection

Learn more about home inspection by attending a **FREE** information session on **January 21, 2020**, from **6:30-8 p.m.**, Room E119 at the Grayslake Campus. Visit www.clcillinois.edu/wpdi/infosessions for more information.

This pre-licensing course, approved by the State of Illinois, prepares future home inspectors for the state licensing examination. Illinois home inspectors must be licensed to comply with state law. All major areas of home inspection will be covered in the 60-hour course, including exteriors, roofing, insulation, interiors, electric, HVAC, structure and plumbing with 5 inspection events. Students will be required to participate in inspection events. These hands-on trips may be scheduled outside of class, based on the availability of students, instructor and sites. Other aspects of the home inspection business, including marketing and business start-up, are also covered. Students should be aware that to open their own home inspection business there are additional costs to consider such as insurance and equipment.

Prerequisite: This course is intended for people who have some working knowledge of the building trades. Textbooks are required and may be purchased in the CLC Bookstore prior to class.

7565 PRLE 40-001

Tuesday and Thursday, February 18 to May 7
6- 9:30 p.m.
24 Sessions
Grayslake Campus, E119
\$799 K. Fulara

Need to buy a textbook?

Visit www.clcillinois.edu/bookstore for hours and information.

FORKLIFT OPERATOR TRAINING

Forklift Operator training provides participants with knowledge and skills to operate a powered industrial truck (forklift) in a safe and professional manner. This training on a sit-down forklift is OSHA compliant and is taught by an OSHA recognized trainer. Training combines formal classroom instruction, practical hands-on training and evaluation of workplace performance.

Training is held at Equipment Depot, 1014 Progress Drive, Grayslake.

This course meets for one session
 8 a.m. to 12 p.m.

\$149 J. Colangelo

7449 PSFT 30-001
 Tuesday, January 21

7450 PSFT 30-002
 Tuesday, February 18

7451 PSFT 30-003
 Tuesday, March 17

7453 PSFT 30-004
 Tuesday, April 21



Truck Driver Training

COMING TO WAUKEGAN'S LAKESHORE CAMPUS IN 2020!

Get on the Road to Your New Career! By earning your Commercial Driver's License (CDL-A), you can train for a variety of high demand opportunities in Lake County.

Students will engage in classroom instruction and behind-the-wheel training in this 160-hour basic training course that meets all state and federal requirements. Students will receive the knowledge and support necessary to pass their CDL permit exam during the first week of class. They will then gain the experience and skills required to prepare for the state-issued Commercial Driver's License (CDL) exams, including the pre-test inspection tests, skills tests and road tests. Students will learn CDL laws, use of controls, safe driving techniques and defensive driving. Students will be taught and mentored by experienced trainers, with a low instructor-to-student ratio to provide individualized training and support. Job placement assistance is also included.

Please note: Students must be at least 21 years of age. Prior to enrolling, students will meet with a dedicated staff member to discuss eligibility, financial options, and complete necessary paperwork. Students must have a valid Illinois Driver's License Class "D" or above. They may not have committed a serious traffic violation in a commercial motor vehicle within the past 12 months. Students must provide a copy of their Motor Vehicle Report (MVR) from the Secretary of State's office. Students currently on bond or parole are not eligible. Students must not have any physical limitation that affects their driving ability. Students will be directed on how to complete the required physical and drug tests. Because all CDL testing is conducted in English, students must be able to speak, read, write and understand English. Language support may be available if needed.

Check the website for upcoming information sessions and class dates.
www.clcillinois.edu/professional/truckdriver

ONLINE OFFERINGS INCLUDE:

- AutoCAD 2018 Certified User
- Autodesk Revit Architecture
- Foundations of Plumbing
- Indoor Air Quality Manager
- Leadership in Energy and Environmental Design (LEED)

Complete online course selection available at
www.clcillinois.edu/professional/onlineclasses

Gain skills in Automation, Robotics and Mechatronics to transform the future! www.clcillinois.edu/programs/arm



Wellness and Health Sciences

If you are looking to combine your love of helping with a curiosity for science, and you have a desire to enter one of the fastest growing career fields, these courses may be ideal for you.

CPR BASIC: BLS HEALTHCARE PROVIDER

This basic course is for healthcare providers who have never had an AHA BLS Healthcare Provider card or for healthcare providers with an expired card. The BLS Healthcare Provider course is designed to provide a wide variety of healthcare professionals the ability to recognize several life-threatening emergencies, provide CPR, use an AED and relieve choking in a safe, timely and effective manner. The course is intended for certified or noncertified, licensed or nonlicensed healthcare professionals. A textbook is required and may be purchased at the CLC Bookstore.

Each section is one session, costs \$75 and is taught by S. Frankson

7549 PALH 8-001
Saturday, January 25
9 a.m. to 12 p.m.
Grayslake Campus, E119

7550 PALH 8-002
Friday, February 7
9 a.m. to 12 p.m.
Grayslake Campus, E118

7551 PALH 8-003
Tuesday, March 10
5:30- 8:30 p.m.
Grayslake Campus, E125

7552 PALH 8-004
Wednesday, April 15
2- 5 p.m.
Grayslake Campus, E125

7553 PALH 8-005
Monday, May 4
9 a.m. to 12 p.m.
Grayslake Campus, TBA

Looking for Heartsaver CPR with Adult, Child and Infant Training? See page 31

Need to buy a textbook? Visit www.clcillinois.edu/bookstore for hours and information.



CPR REFRESHER: BLS HEALTHCARE PROVIDER

This refresher course is for healthcare professionals who already have a current AHA BLS Healthcare Provider card and need to renew their certification. The BLS Healthcare Provider course is designed to provide a wide variety of healthcare professionals the ability to recognize several life-threatening emergencies, provide CPR, use an AED and relieve choking in a safe, timely and effective manner. The course is intended for certified or noncertified, licensed or nonlicensed healthcare professionals. A textbook is required and may be purchased at the CLC Bookstore.

Each section is one session, costs \$65 and is taught by S. Frankson

7545 PALH 7-001
Saturday, January 25
1- 4 p.m.
Grayslake Campus, E119

7546 PALH 7-002
Friday, February 7
1- 4 p.m.
Grayslake Campus, E118

7547 PALH 7-003
Thursday, March 12
5:30- 8:30 p.m.
Grayslake Campus, E125

7548 PALH 7-004
Monday, May 4
1- 4 p.m.
Grayslake Campus, TBA

NEW! ADVANCED CARDIOVASCULAR LIFE SUPPORT

For healthcare professionals who either direct or participate in the management of cardiopulmonary arrest or other cardiovascular emergencies and for personnel in emergency response. Topics include: Basic life support skills, including effective chest compressions, use of a bag-mask device and AED; recognition and early management of respiratory and cardiac arrest; recognition and early management of peri-arrest conditions such as symptomatic bradycardia; airway management; related pharmacology; management of ACS and stroke; effective communication as a member and leader of a resuscitation team.

7540 PALH 58-001
Monday, February 17
8 a.m. to 5 p.m.
1 Session
Grayslake Campus, E118
\$350 S. Frankson

ONLINE OFFERINGS INCLUDE:

- Dental Office Manager
- Fitness Business Management
- Medical Interpreter (Spanish/English)
- Medical Transcriptionist
- Pharmaceutical Sales Representative

Complete online course selection available at www.clcillinois.edu/professional/onlineclasses

NEW! PEDIATRIC ADVANCED LIFE SUPPORT

This course is for healthcare providers who respond to emergencies in infants and children, as well as personnel in emergency response, emergency medicine, intensive care and critical care units. The goal of the PALS course is to improve the quality of care provided to seriously ill or injured children, resulting in improved outcomes. To enter the course, students must complete the PALS pre-course self-assessment. Throughout the course, students are presented with 12 in-hospital pediatric patient cases and a team dynamic lesson. Upon successful completion of all the patient cases, students must pass the multiple-choice exam with a minimum score of 84%. Topics include high-quality Child CPR AED and Infant CPR; recognition of patients who do and do not require immediate intervention; recognition of cardiopulmonary arrest early and application of CPR within 10 seconds; apply team dynamics; differentiation between respiratory distress and failure; differentiation between compensated and decompensated (hypotensive) shock; early interventions for the treatment of shock; differentiation between unstable and stable patients with arrhythmias; clinical characteristics of instability in patients with arrhythmias; post-cardiac arrest management. Unable to attend?

7542 PALH 59-001

Monday, March 16
8 a.m. to 5 p.m.
1 Session
Grayslake Campus, E118
\$350 S. Frankson

UPDATED! CNA RE-CERTIFICATION

This course is designed for those who have already completed a Certified Nurse Assistant course and successfully completed the Illinois Nurse Aide Examination, but are no longer listed on the Illinois Nurse Aide Registry. Enrolling in this online course provides students with step-by-step guidance on how to verify eligibility for recertification with Southern Illinois University and complete the necessary steps, including any required medical tests, background checks and fingerprinting. Course cost includes pairing registered students with a test evaluator to complete a manual skills performance test in a care facility. Upon completion of the manual skills test, students will be guided on how to

register and prepare for the written exam. Study materials and support are provided for both the manual skills and written tests. Please note that the manual skills performance test must be completed within the listed dates of the course. Students that enroll in the course and then are determined to not be eligible for recertification by SIU will be allowed to drop the course for a full refund.

7536 VALH 97-001

January 21 to February 28
Online 24/7
AND
1 Session, TBA
Clinic In-District
\$120 K. Hunter

7537 VALH 97-002

March 30 to May 8
Online 24/7
AND
1 Session, TBA
Clinic In-District
\$120 K. Hunter

UPDATED! NLN PRE-ENTRANCE EXAM PREPARATION

Most Health Career programs at the College of Lake County require potential students to take the National League for Nursing (NLN) pre-entrance exam. This preparation course should ideally be taken several months BEFORE you plan to take the exam. Content experts will review basic test-taking strategies, key math concepts, biology, chemistry, physics, reading comprehension and word knowledge skills. The course is designed to help you create a study plan, determine where you should most focus and provide resources to assist in preparing. There is no book required for this class and registration fee includes 60 days of access to NLN online study materials.

7538 VALH 25-001

Monday and Wednesday, January 22 to February 26
6- 9 p.m.
11 Sessions
Grayslake Campus, E124
\$250 Staff

7539 VALH 25-002

Tuesday and Thursday, April 2 to May 7
6- 9 p.m.
11 Sessions
Grayslake Campus, E125
\$250 Staff

PERSONAL CARE AIDE

The Bureau of Labor Statistics reports that Lake County is part of a Top 10 hiring region in the nation for Personal Care Aide positions. The growth rate of these positions are much faster than average – which makes now the perfect time to explore this foundational healthcare career.

Gain the basic skills needed to begin a new career or to confidently provide companionship or care for an elderly or disabled family member or friend. In this course, you will learn:

- Person-centered communication techniques
- Basic hygiene and infection control
- Assistance with personal care tasks
- Housekeeping, cooking and nutrition
- Use of adaptive equipment such as lifts, wheelchairs, walkers and grab bars
- Recognizing and responding to an emergency
- Understanding legal requirements and limitations
- Heartsaver CPR
- Current career paths from local employers

Classes will be held in a hands-on skills lab providing access to equipment and materials often used in Personal Care Aide work. Textbooks and a gait belt are required and are available in the CLC bookstore.

Please note: while this is not a certified healthcare professional or nurse aide course, students will receive a certificate of completion and an American Heart Association CPR card good for two years.

7516 VALH 12-001

Saturday, February 22 to March 14
8 a.m. to 2 p.m.
4 Sessions
Grayslake Campus, TBA
\$299 A. Anderson

Pharmacy Technician Training

Learn more about pharmacy technician training by attending a FREE information session on Monday, January 13, 2020 from 6-8 p.m. at the Grayslake Campus, Room E118. Visit www.clcillinois.edu/wpdi/infosessions for more information.



You can begin your career in healthcare as a Pharmacy Technician through a PTCB-Recognized program. Pharmacy Technicians are in demand and job growth will continue to increase 12 percent by 2026. Technicians work in a variety of settings that include pharmacies, hospitals, clinics, assisted living facilities, retail stores and mail-order pharmacies. They are responsible for receiving and filling prescriptions under the supervision of licensed pharmacists as well as performing duties such as maintaining patient profiles, answering phones and working the register. This program will provide you with the knowledge and skills for an entry level position and prepare you to pass the national certification exam required of all pharmacy technicians in the State

of Illinois. Textbooks are required and are available for purchase in the bookstore. Program requirements: High school diploma or G.E.D, basic 9th and 10th grade math (algebra), Proficiency in English (verbal and written communication skills), no prior criminal record, 18 years old (some exceptions), hand to eye coordination and finger agility.

This is a hybrid course that requires use of Blackboard.

7514 VALH 95-600
Monday and Wednesday,
January 22 to May 11
6- 9 p.m.
27 Sessions
Grayslake Campus, E118
\$1499 V. Vojvodic



Need to buy a textbook? Visit www.clcillinois.edu/bookstore for hours and information.

Veterinary Assistant Training

Learn more about veterinary assistant training by attending a FREE information session on January 7, 2020 at 6 p.m., Room E119 at the Grayslake Campus. Visit www.clcillinois.edu/wpdi/infosessions for more information.

VETERINARY ASSISTANT TRAINING

If you have a nurturing spirit and a desire to help animals, consider a career in the veterinary field! This course trains students to assist veterinarians and veterinary technicians in providing medical care to sick and injured animals. Students will also learn how to help in the office and with customer relations in addition to examinations, hospital procedures, surgical preparation and laboratory tests.

This 250-hour NAVTA approved course includes a 100-hour clinical externship experience. Please note that the clinical externship will most likely take place during normal business hours and successful completion of the externship is required to complete the course. Externship dates will be given in the first month of class to ensure ample time to inform current employers of your training, if needed, as time off from work may be required depending on your schedule. Students must complete a background check at an approved provider in order to participate in the clinical externship portion of the program. Students will also be required to provide proof of current health insurance. Prior felony convictions may prevent participation in the program. The fee for this service is NOT included in the course fee.

Course Prerequisites and Special Notes: A high school diploma or GED is required. In addition, students must have the following minimum abilities: psychomotor skills (eye-hand coordination and finger dexterity), visual acuity (normal or corrected) and the ability to lift 30 pounds in the clinical setting.

Students may be required to meet specific health requirements and drug testing prior to placement in the clinical portion of the course. This is based on the requirements of the externship site and will be determined at placement. Any fees to meet health requirements are NOT included in the course fee.



7517 PVET 1-001

Tuesday and Thursday
January 21 to May 7
5- 10 p.m.
30 Sessions
Grayslake Campus, E118
\$2499 H. DeWitt

Considering advancing your career in healthcare? Medical Assisting is a great next step!
www.clcillinois.edu/programs/moa



Continuing Education Certificates

We are proud to partner with The University Center in offering Certificates to support continuing education needs. As a consortium-based center located on the CLC Grayslake campus, academic programs from across public and private universities are brought directly to students through online, in-person or hybrid classes.



The University Center and Professional Development are both committed to continuous and life-long learning opportunities in constantly changing environments. For those searching for ways to advance their skillset beyond the baccalaureate degree, these Certificates offer solutions to diversify skills for today's workforce.

www.ucenter.org/certificates
(847) 665-4000
transfer@ucenter.org

SELECTED CERTIFICATE TOPICS

Business and Information Technology

- Business Analytics
- Conflict Management
- Enterprise Optimization
- Human Resources Management
- Market Research
- Nonprofit Management

Education and Social Sciences

- English as a Second Language Endorsement
- Higher Education Administration
- K-12 Educational Technology
- Mediation Skills Training
- Secondary Teacher Licensure
- Special Education Endorsement
- Web-Based Learning

Wellness and Health Sciences

- Health Communication Professional

Illinois Small Business Development and International Trade Center

Explore business solutions and training and find new opportunities for your business to start, grow and succeed. Whether you're starting a new business, positioning your company for growth or seeking to expand globally, we can help. Our business services include:

- No-cost, confidential, one-on-one business advising in English or Spanish with noted experts
- Assistance developing business, marketing and financial plans
- Information about federal, state and local loan programs
- Support in securing commercial loans with local providers
- No-cost one-on-one strategic export advising
- Access to vital business resources
- Interactive, low-cost workshops



The Illinois Small Business Development & International Trade Center is funded in part through a cooperative agreement with the U.S. Small Business Administration (SBA), the Illinois Department of Commerce and Economic Opportunity, and the College of Lake County. Reasonable accommodations for persons with disabilities will be made if requested at least two weeks in advance. Please contact the center at (847) 543-2033 or TDD: (847) 223-0134.



Connect with us. We are your business partner to success.

Schedule a no-cost, one-on-one advising session with one of our small business advisors or with our International Trade Specialist.

(847) 543-2033

IllinoisSBDC@clcollinois.edu

www.clcollinois.edu/sbdc-itc

“With assistance from our International Trade Specialist, we discovered business resources and grant opportunities that helped us export our products and services. We attended additional trade shows to sell our franchise abroad and as a result, have seen measurable increases in sales and profits.”

Danny Park
CEO of RoboThink, LLC
www.myrobothink.com

RoboThink is a children's education business focused on teaching students robotics and coding. They franchised the business model and currently have over 100 locations worldwide.

Accounting and Finance

QuickBooks is the #1 Rated Accounting Solution for Small Businesses.

INTRODUCTION TO QUICKBOOKS

Gain a better understanding of QuickBooks accounting software for your own business or your employer's company with this 8-hour class, which is designed for users who have less than six months' experience working with QuickBooks. Topics include the setup of new files, processing bank transactions, accounts receivable and accounts payable entries, reconciliation of bank and credit card accounts and running basic financial reports. This class does not cover the cloud/online version of QuickBooks. Materials are included in the course fee. **Prerequisite:** Ability to use Microsoft Windows products.

7360 TBSM 20-001

Thursday, February 27

8 a.m. to 5 p.m.

1 Session

Grayslake Campus, E127

\$195 R. Ritzwoller

QUICKBOOKS DESKTOP CLOUD

This workshop will empower you to take control of the financial accounting for your business, all with the ease and convenience of an online platform. Learn how to import data, set up your company, run payroll, send invoices and reconcile accounts. Discover best practices when using QuickBooks Online and learn how to navigate its features. We will also review reporting capabilities and methods, sales/revenue, expense/purchase and other transactions. Materials are included in the course fee. **Prerequisite:** Ability to use Microsoft Windows products.

7361 TBSM 22-001

Thursday, May 7

8 a.m. to 5 p.m.

1 Session

Grayslake Campus, E127

\$195 R. Ritzwoller

A variety of QuickBooks topics are also available online through ed2go. Visit www.clillinois.edu/SBDCOnline. These classes are not accessed through Blackboard.



INTERMEDIATE QUICKBOOKS

Enhance your existing knowledge of QuickBooks and learn how to analyze financial data to better understand your business; create and customize reports; as well as track and pay sales tax. Learn payroll functions such as setting up payroll information and schedules, payroll tracking and processing payment of payroll taxes in this intensive class. Materials are included in the course fee. **Prerequisite:** Introduction to QuickBooks or working knowledge of QuickBooks software.

7398 TBSM 21-001

Thursday, May 14

8:30 a.m. to 12:30 p.m.

1 Session

Grayslake Campus, E127

\$115 R. Ritzwoller

UNDERSTANDING BASIC FINANCIAL STATEMENTS

If you can read a nutrition label or baseball box score, you can learn to read basic financial statements. You do not need to be an accountant. Financial statements provide insight into the financial position and health of a company, all things that you need to understand to run your business. This workshop will walk you through the three basic financial statements: Balance Sheet, Income Statement and Statement of Cash Flows. You will learn how to use these

statements to perform financial analysis and give you a solid understanding of how to make smart, strategic business decisions.

7448 TBSM 6-001

Wednesday, February 12

6-7:30 p.m.

1 Session

Grayslake Campus, E119

\$25 A. Jackson

WHAT YOU NEED TO KNOW ABOUT FEDERAL TAXES & YOUR BUSINESS

Does the thought of small business taxes make you cringe? Attend this workshop to learn about your federal tax obligations and responsibilities. We will cover when to apply for an Employer Identification Number (EIN), basic recordkeeping requirements, basic bookkeeping and accounting methods and the different types of business structures. Learn how to select a paid tax preparer, identify and deduct business expenses and calculate net profit or loss. We will also review self-employment and estimated taxes, Form 1040 and Schedules C and C-EZ.

7279 TBSM 73-001

Wednesday, February 19

6-7:30 p.m.

1 Session

Southlake Campus, V328

\$25 L. Malz

FINANCING A BUSINESS STARTUP

Many businesses fail because of poor financing. Some never come into existence at all because financing is unavailable. Small business financing does not have to be a difficult task, but business owners must learn the basics of business finance, the types of financing generally available to startups and the different types of financing sources. Once the business owner has secured adequate money, they need to know how to manage it to ensure business success. Topics include financing basics, types of financing available, cash flow basics and understanding operating capital.

7388 TBSM 15-001
Thursday, April 2
6-7:30 p.m.
1 Session
Grayslake Campus, E121
\$25 S. Stang

FINANCING OPTIONS TO GROW A BUSINESS

You need money to make money. Savvy entrepreneurs know that growing businesses often requires additional funding. They also know what sources they can look to for growth capital. We'll review traditional and non-traditional financing solutions and identify pros and cons for each and you will gain a greater understanding of ways to finance current and future business growth needs. Topics include knowing what to ask for, friends and family financing, non-traditional financing, equipment leasing and bank financing and SBA loans.

7362 TBSM 40-001
Tuesday, April 28
6-7:30 p.m.
1 Session
Grayslake Campus, E121
\$25 B. Kornit



Business Growth and Development

PROTECTING YOUR BUSINESS BRAND, ASSETS AND INNOVATIONS

If you are starting a business or already own one, you may have intellectual property assets that need legal protection! In this workshop, you will learn the basics of intellectual property and how it applies to your business. We will review how to protect and build your brands through trademarks and how to protect your inventive concepts through patents and trade secrets. Active Q & A is encouraged!

7417 TBSM 46-001
Thursday, March 5
6-7:30 p.m.
1 Session
Southlake Campus, V302
\$25 B. Rotman

Government Contracting

NAVIGATING THE MAZE OF GOVERNMENT CONTRACTING

According to the Small Business Administration, the federal government buys nearly \$100 billion worth of goods and services from small businesses each year! U.S. federal government contracts represent a tremendous sales and revenue opportunity for small businesses because the U.S. government is the world's largest customer, buys all types of products and services in both large and small quantities and is required by law to provide opportunities for small businesses. Selling to the government requires a very different approach than selling to the private sector. Attend an individual class or all three and learn how to compete in the government-contracting marketplace!

TAKE THE SERIES AND SAVE!

7322 TBSM 62-001

Thursdays, February 13, March 12 & April 9
9 a.m. to 12 p.m.
3 Sessions
Southlake Campus, V328
\$40 R. Haake

CLASSES CAN BE TAKEN INDIVIDUALLY:

GOVERNMENT CONTRACTING 101

This workshop is great for small business owners new to contracting with government agencies, or business owners in need of a refresher on what their business should be doing. Learn the basics of government contracting to compete in the government-contracting marketplace. Topics include PTAC's free bid lead/bid matching system, vendor registration at all governmental levels (SAM, IPG, etc.), small business certifications and sub-contracting opportunities.

7319 TBSM 61-001

Thursday, February 13
9 a.m. to 12 p.m.
1 Session
Southlake Campus, V328
\$20 R. Haake



THE CERTIFICATION PROCESS

There are several government agencies at the federal, state and local levels offering small business certification, but navigating the alphabet soup of government certifications is confusing! Attend this workshop and learn the details of the application process, documentation requirements and certification options. Discover how to market and leverage certifications for the growth of your business. Types of Certifications we will discuss include Federal 8(a), EDWOSB, HUBZone, SDB, SDVOSB, WOSB, VOSB; State DBE, FBE, FMBE, MBE, PBE, VBE; Local DBE, MBE, WBE, VBE. Learn which small business certification is the best one for you!

7320 TBSM 65-001

Thursday, March 12
9 a.m. to 12 p.m.
1 Session
Southlake Campus, V328
\$20 R. Haake

BID TO WIN GOVERNMENT CONTRACTS

Are you interested in winning a government contract but aren't sure how to write a good proposal to respond to a bid? Bid match is only the beginning! Learn the basics of writing a proposal to ensure you are responding to everything requested in a solicitation. Gain a better understanding of what government contracting officers expect to see when you submit your proposal. Federal, state and commercial proposals are covered, with time for Q & A.

7321 TBSM 63-001

Thursday, April 9
9 a.m. to 12 p.m.
1 Session
Southlake Campus, V328
\$20 R. Haake



International Trade

FINDING, EVALUATING AND MANAGING FOREIGN DISTRIBUTORS

Using distributors to sell is one of the most common methods for exporters to start gaining footprints in foreign markets. Foreign distributors represent your product and act as the local presence for your business. It is extremely important to know how to find and select the right partners, and nurture and grow the relationships. We will discuss how to locate potential distributors, the screening and pre-qualifying process, as well as the interview. Learn the art of approaching foreign distributors, the best practice of managing foreign partners and other key considerations.

7445 TBSM 88-001

Thursday, February 20
10-11:30 a.m.
1 Session
Grayslake Campus, E119
\$25 B. McNamara

INTRODUCTION TO EXPORTING

This workshop provides you with a comprehensive overview of export requirements and procedures including knowledge, resources, and key elements to your export success. Learn how to determine if exporting is right for your company, the different export models that are used and when each is appropriate, how to prepare for exporting, and how to execute on your

export plan. Topics include export readiness, how to select target markets, market research and prioritization, finding good partners, methods of payment, insurance, managing your international shipments and export compliance.

7350 TBSM 92-001

Thursday, April 16
9-10:30 a.m.
1 Session
Grayslake Campus, E119
\$25 K. Kim

DRAFTING A STRONG, BINDING INTERNATIONAL CONTRACT

Gain a better understanding of international contracts so you can keep your money, save time and mitigate risk. When doing business with a company based in another country, it is essential to have written agreements which cover matters that are unique to international business. In this workshop, we will examine and draft wording normally included in international business contracts with a focus on distribution contracts and proforma invoices. We will discuss real situations involving international business contracts where the exporters paid hefty fines, and in some cases, were imprisoned.

7501 TBSM 90-001

Thursday, May 14
10-11:30 a.m.
1 Session
Grayslake Campus, E119
\$25 D. Evans

Start Up and Planning

STARTING YOUR BUSINESS IN ILLINOIS

Learn the basic elements of starting a successful business such as choosing a business structure, determining tax requirements, marketing and selling and much more. Get answers to the most frequently asked questions!

7345 TBSM 10-001

Wednesday, January 22
2-4 p.m.
1 Session
Grayslake Campus, E119
\$20 M. Bienvenue

7346 TBSM 10-002

Thursday, February 20
9-11 a.m.
1 Session
Southlake Campus, V328
\$20 M. Bienvenue

7347 TBSM 10-003

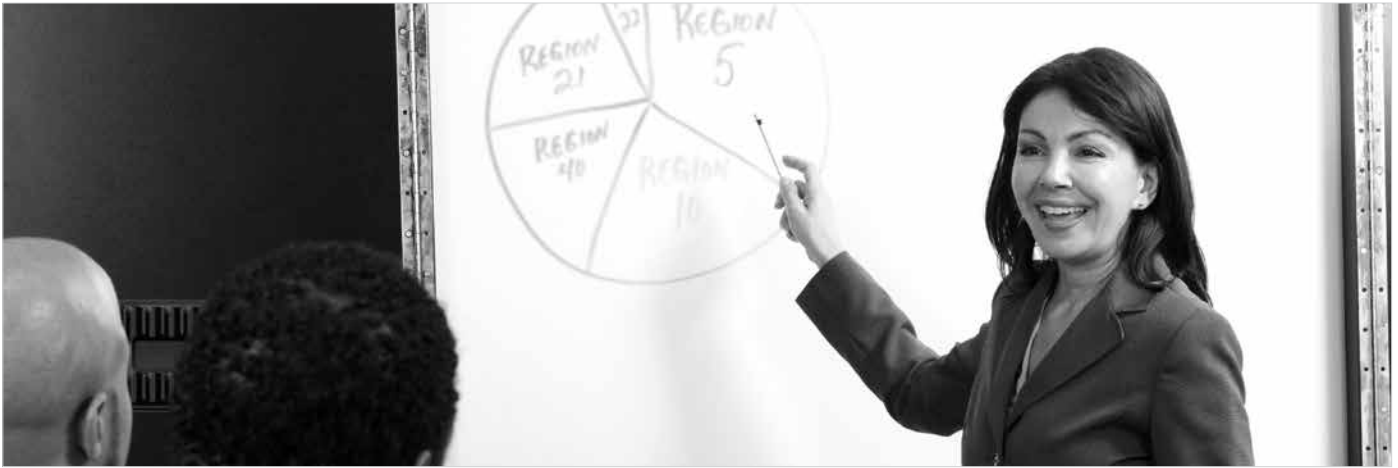
Wednesday, March 18
6-8 p.m.
1 Session
Lakeshore Campus, TBA
\$20 M. Bienvenue

7348 TBSM 10-004

Thursday, April 23
9-11 a.m.
1 Session
Grayslake Campus, E119
\$20 M. Bienvenue

7349 TBSM 10-005

Tuesday, May 12
2-4 p.m.
1 Session
Southlake Campus, V328
\$20 M. Bienvenue



Marketing and Sales

DIGITAL MARKETING STRATEGIES SERIES

The prospect of marketing your business can be overwhelming, especially when you are a small business with an even smaller budget. The good news is that there are marketing tools that won't break the bank. Learn how to get found online, attract new customers and grow your business.

TAKE THE SERIES AND SAVE! BRING YOUR LUNCH AND JOIN US!

7355 TBSM 52-001

Tuesdays, February 11, March 10, April 7 & May 12
12-1:30 p.m.

4 Sessions

Southlake Campus, V328

\$75 N. Barszczewski

CLASSES CAN BE TAKEN INDIVIDUALLY:

DIGITAL MARKETING – GET READY FOR TAKEOFF!

Digital marketing is the marketing of tomorrow, and that means providing each customer and prospect with a tailored message. Find out how to survive and thrive in a highly competitive market by learning the essentials of digital marketing, recognizing the need for a comprehensive marketing plan and implementing it successfully. Become familiar with key marketing concepts. Learn how to engage an audience that will increase sales and provide valuable metrics that you can analyze.

7354 TBSM 53-001

Tuesday, February 11

12-1:30 p.m.

1 Session

Southlake Campus, V328

\$25 N. Barszczewski

THE POWER OF EMAIL MARKETING

Email is the most cost-effective, targeted, trackable and efficient way to build and maintain relationships in all types of business and organizations. Discover how communicating with customers regularly can help a small business stay connected, generate increased referrals, repeat sales and nurture customer loyalty. Learn about different types of newsletters, permission-based email marketing and how to become a trusted sender, increasing deliverability and open rates. You will also learn how to integrate with social media and use images and videos.

7353 TBSM 55-001

Tuesday, March 10

12-1:30 p.m.

1 Session

Southlake Campus, V328

\$25 N. Barszczewski

HARNESS THE POWER OF LINKEDIN

LinkedIn is the social media place for professionals and for business and has all of the appealing features of a social media marketing tool, but none of the meaningless chatter that often floods other social media sites. Learn best practices for a successful LinkedIn profile and discover how your small business can use this platform to gain visibility, develop relationships and drive sales. Get a general overview and introduction to some of the key features available through LinkedIn. Discover strategies for quality content that drives engagement and integrate LinkedIn into your marketing mix.

7352 TBSM 29-001

Tuesday, April 7

12-1:30 p.m.

1 Session

Southlake Campus, V328

\$25 N. Barszczewski

ONLINE REPUTATION MANAGEMENT – REVIEWS AND STAR RATINGS

In today's world, what are your potential customers going to see first: your website or your profile on one of the many online customer review and star rating portals? If you haven't asked yourself that question yet, you are far behind your competition. Online reviews influence decisions about who we do business with, and where we spend our money. Learn the process of managing your customer reviews, analyze best practices and discover ways to maximize your online ratings. Star ratings follow you everywhere online. Bottom line...stars matter!

7351 TBSM 51-001

Tuesday, May 12

12-1:30 p.m.

1 Session

Southlake Campus, V328

\$25 N. Barszczewski



Strengthening Lake County's workforce through:

- Transform Lake County Scholarships – *Apply now*
- CLC Apprenticeship Program – *Launching Fall 2020*



Grayslake Campus
19351 W. Washington St.

Lakeshore Campus
33 N. Genesee St.
Waukegan

Southlake Campus
1120 S. Milwaukee Ave.
Vernon Hills

www.clcillinois.edu

TRANSFORM LAKE COUNTY



WHAT IS TRANSFORM LAKE COUNTY?

The College of Lake County's equitable education and employment initiative provides short-term programs with an identified workforce gap in the communities of North Chicago, Waukegan, Round Lake and Zion. Grant funding covers all tuition and fees, course materials, textbooks and industry exam fees. Additional scholarships also are available to cover costs such as transportation, textbooks, childcare and more.

\$1.5M for full scholarships in short-term programs available to students in the communities of North Chicago, Waukegan, Round Lake and Zion in the fields of:

- Auto collision repair
 - Certified nursing assistant
 - Introduction to dental assisting
 - Forklift operator
 - Healthcare office assistant
 - HVAC
 - Office management & technology
 - Phlebotomy
 - Truck driving
- Fall 2020 registration opens March 9*

ACT NOW! SPRING CLASSES START JAN. 21

info@clcollinois.edu | (847) 543-2090 | www.clcollinois.edu/TLC

A workforce equity initiative funded by the Illinois Community College Board and the Illinois Legislative Black Caucus



AUTO COLLISION REPAIR

Program length: 6 months
Current average salary is \$46,306
in Lake County, IL



CERTIFIED NURSING ASSISTANT

Program length: 2 months
Current average salary is \$30,038
in Lake County, IL



INTRODUCTION TO DENTAL ASSISTING

Program length: 6 weeks
Current average salary is \$44,523
in Lake County, IL



FORKLIFT OPERATOR

Program length: one day
Current average salary is \$37,175
in Lake County, IL



HEALTHCARE OFFICE ASSISTANT

Program length: 17 weeks
Current average salary is \$34,614
in Lake County, IL



HEATING & AIR CONDITIONING TECHNOLOGY

Program length: less than a year
Current average salary is \$56,834
in Lake County, IL



TRUCK DRIVER

Program length: 2 months
Current average salary is \$49,332
in Lake County, IL



OFFICE MANAGEMENT & TECHNOLOGY

Program length: less than a year
Current average salary is \$36,947
in Lake County, IL



PHLEBOTOMY

Program length: 4 months
Current average salary is \$40,775
in Lake County, IL



APPRENTICESHIP PROGRAM

Launching Fall 2020

The College of Lake County seeks Lake County Businesses interested in strengthening their workplace pipeline and building high-quality talent.

Why hire an apprentice?

- Build a talent pipeline for highly-skilled employees with industry credentials
- Lower costs of advertising and recruiting
- Reduce turnover
- Enhance employee loyalty and motivation
- Invest in talent that keeps pace with the latest industry advances
- Solution for businesses experiencing retirement of highly-skilled workers
- Create a career pathway for employees
- Apprentices can play a role in future recruiting of talented employees

Why become an apprentice?

- Industry aligned education
- Full-time employment with benefits
- Gain practical skills
- Earn a degree
- Paid tuition without college debt
- National certification
- Higher wages and career advancement
- Six career areas to choose from including, horticulture, healthcare, IT/cyber security, automotive, business and manufacturing



For more information contact:
Daniel Ortego, Apprenticeship Manager
Career and Job Placement Center
cjpc.apprenticeships@clcollinois.edu
(847) 543-2263
www.clcollinois.edu/cjpc

GETTING BUSINESS REFERRALS

Referrals are one of the top ways to grow a business and your best source for new business is referrals from happy customers. The strongest sales leads are those that have been sent your way as a result of strong referrals. The key is to get satisfied customers to promote you and your business within their social and professional networks. Learn how to ask your customers for referrals and, most importantly, teach them how to send high value sales leads your way.

7447 TBSM 14-001

Tuesday, February 18
6-7:30 p.m.
1 Session
Grayslake Campus, E124
\$25 A. Jackson

SALES SUCCESS

Your ability to generate sales and profits is the key to your success. Most businesses and sales people use only one or two profit making strategies. In this workshop, you will learn step-by-step plans, strategies, methods and techniques to build a more profitable book of business - resulting in positioning yourself as the first-choice product or service provider.

7397 TBSM 16-001

Tuesday, March 31
6-7:30 p.m.
1 Session
Grayslake Campus, E121
\$25 J. Belford

Entrepreneurship**NEW! ENTREPRENEURSHIP ONLINE CERTIFICATE SERIES**

Boost your chances of success for your new or small business and reduce your risks. Get the latest on planning your business, brainstorming business ideas and a checklist for going into business. Learn how to create a business plan and take home a step-by-step approach to attract and keep customers with an emphasis on customer-driven marketing decisions and building a strong brand. At the end of this series, you will be able to identify the abilities required of successful entrepreneurs and take-home techniques to successfully manage and market your new business.

TAKE THE SERIES AND SAVE!

Online 24/7 \$495

CLASSES CAN BE TAKEN INDIVIDUALLY**NEW! ENTREPRENEURSHIP BOOT CAMP**

Gain insight into the characteristics, knowledge and skills needed to become a successful entrepreneur. Identify the abilities required of successful entrepreneurs and how to acquire them, develop goals to help establish your business, build an outline for your plan, and take-home techniques to successfully manage your new business.

Online 24/7 \$195

NEW! THE BUSINESS PLAN

Evaluate the many aspects and potential hurdles of the business and build your Business Plan, one-step at a time. This practical, hands-on approach encourages you to immerse yourself in the vision and planning aspects of your business. Focusing on the most critical components of the Business Plan enables you to uncover hidden risks and assess the business from a marketing, management, and financial vantage point.

Online 24/7 \$195

NEW! ENTREPRENEURIAL MARKETING

To succeed in today's marketplace, entrepreneurs must know how to market their product or service effectively. This course offers you a step-by-step approach to attract and keep customers, all within a realistic budget. Whether you are starting a business or growing an existing one, you will take away practical marketing tips and tools that you can use to improve your marketing efforts.

Online 24/7 \$195

For more information and to register, visit www.clcillinois.edu/SBDConline.

Online Learning - Professional, Convenient And Affordable!

Whether you are looking to update your skills or learn new ones, online education may be the right choice for you. With a variety of topics and formats, you can complete any course whenever and wherever the internet is available.

These are comprehensive, interactive, instructor-led courses available in four or six-week sessions. For a more flexible option, select the "self-paced courses" that provide access to all lessons immediately with up to three months to complete. These online courses cannot be accessed through Blackboard.

More Options for the Online Learner

The Small Business Administration offers no-cost online courses focused on building skills in a variety of areas important to business owners and their employees. The SBA's Learning Center offers a variety of online courses to help you start and run your business!

For a complete list of SBDC's online classes and to register, visit www.clcillinois.edu/SBDConline.



Personal Enrichment

Enjoy life.

Engage your passions.

Experience new endeavors.

**CLC’s ENDEAVOR classes are affordable,
fun and taught by local experts.**



Endeavor

- Beekeeping.....29
- Broadcast Communication
and Voice-overs29
- Concealed Carry30
- CPR31
- Creative Arts.....32
- Culinary34
- Dance34
- Fitness35
- Genealogy36
- Music.....36
- Online Courses45
- Photography.....38
- Wellness39

Explore and Engage

- Fast-Paced Program for Gifted Students.....42
- Online Courses45
- Test Prep.....41
- Youth Registration Information.....43

Discovery

- Current Events.....46
- Film.....47
- Financial Management47
- History48
- Language49
- World Religion.....50
- Writing.....50

Apply, Register and Pay51

Beekeeping



BEEKEEPING 101

Are you an aspiring beekeeper? Learn about bee biology, modern beekeeping techniques, hive construction and means of acquiring bees. Maintain hives to assist the deteriorating ecosystem and help your garden or orchard and help the growing demand to use bees for pollination. Learn creative ways to use honey products. If you've never kept bees, this class is where to start.

7570 CAVO 3-001

Saturday, February 22
9 a.m. to 3 p.m.
1 Session
Grayslake Campus, H201
\$75 E. Popelka

BEEKEEPING FIELD STUDY

Here's your opportunity to apply what you learned in Beekeeping 101. Learn practical hands-on instruction for installing, manipulating and inspecting colonies of bees at the CLC Apiary. Spring is the time to start a bee colony, and this workshop walks you through it step by step on how to establish one correctly.

7569 CAVO 1-001

Saturday, April 25
10 a.m. to 12 p.m.
1 Session
Grayslake Campus, H201
\$39 E. Popelka

Broadcast Communication and Voice-overs

Students age 16-17 may register through the Explore program for Voice-over classes. Call (847) 543-2980 or email CPEInfo@clcillinois.edu for registration assistance.

For all Voice-over classes: Bring headphones, a flash drive and/or email for shared Google drive. PCs will be provided. Bringing your own laptop is optional.

VOICE-OVER: INTRODUCTION

If you are curious about the world of voice-over and whether is right for you, enjoy this introduction to the technical and business aspects of voice-over performance. Gain valuable hands-on vocal production experience in recording, editing and post-production. Explore voice-overs in commercials, audio books, podcasting, character creation and more. Recommended prior to taking Voice-Over: Fundamentals.

7461 CPER 23-001

Thursday, February 6
6:30-9:30 p.m.
1 Session
Grayslake Campus, T344
\$59 E. Cashmore

VOICE-OVER: FUNDAMENTALS

Enjoy an expanded deep-dive into voice-over performance. Discover the technical and business aspects and gain lots of hands-on experience. Receive coaching and guidance as you create vocal projects for a new career or a new hobby. Class will cover commercials, audio books, pod casting, character creation and more! Get experience with vocal production including recording, editing and post-production.

7462 CPER 24-001
Wednesday, February 19 to March 18
(No class March 4)
6:30-9:30 p.m.
4 Sessions
Grayslake Campus, T341
\$149 E. Cashmore

Voice Over Fundamentals is a Prerequisite for all Voice-over Breakout Classes

VOICE-OVER BREAKOUT: VOCAL PRODUCTION

Your speaking voice is an instrument. Using it correctly for speaking is important for voice-over work, acting or even personal and professional presentations. Learn important information about vocal production. Work with the Vocal Tool Kit to strengthen and hone your vocal skills. Receive helpful coaching and guidance as you practice using your instrument effectively. Record a sample of the projects you create. Dress comfortably.

7463 CPER 35-001

Thursday, April 2
6:30-9:30 p.m.
1 Session
Grayslake Campus, T344
\$39 E. Cashmore

VOICE-OVER BREAKOUT: CARTOON AND VIDEO GAME VOICE-OVERS

"I'll get you, my pretty..." Do you like creating silly, scary or unique voices? Take a fun and focused look at creating character voices for video games, cartoons, audiobooks and more. Enjoy guidance and practice as you learn how to identify character and vocal traits and how to create them. Record a sample of the characters you create.

7465 CPER 36-001

Thursday, April 9
6:30-9:30 p.m.
1 Session
Grayslake Campus, T344
\$39 E. Cashmore

VOICE-OVER BREAKOUT: AUDIOBOOKS

Audiobooks are growing in popularity provide plenty of opportunities for voice-over narrators. Discover the performance and technical skills needed to create audiobooks and learn how to find and audition for narration jobs. Receive guidance and practice on how to create audiobook auditions and final products. Gain experience recording a sample of an audiobook selection.

7464 CPER 32-001

Thursday, April 16
6:30-9:30 p.m.
1 Session
Grayslake Campus, T344
\$39 E. Cashmore

Concealed Carry Licensing

On July 9, 2013, Public Act 98-63, the Firearm Concealed Carry Act, became Illinois state law. This course will satisfy the legal training requirements for eligible residents who wish to apply for permission to carry a concealed firearm. All participants will be required to qualify on the range and will attend classroom topics covering state and federal laws relating to the ownership, storage, carry and transportation of a firearm as well as weapons handling as defined in the statute and administrative rules.

Requirements and Course Information: Participants must be at least 21 years of age and if a resident of the State of Illinois, be eligible to possess a valid FOID card. Basic weapon handling knowledge and experience is recommended but not required.

Those who own a 9 mm or a 38 special will use their personal weapon and provide their own ammunition as part of their range exercises. Based on availability, participants who do NOT own a handgun may be able to rent a weapon at a small additional fee in order to complete the range qualification. Students interested in this option should discuss availability with the instructor at the first class.

The College of Lake County is a weapons-free location.

Students are prohibited by law from bringing firearms to campus. This includes all buildings and parking lots. Students should not bring their firearms on campus or to class. Weapons should only be brought to the final class meeting, which is held at a shooting range.

Prior Training: The 12- and 8-hour training classes are listed as department consent. Prior proof of training **MUST** be received before a student can register for either section. Call (847) 543-2980 for more information. For participants with prior training, please refer to chart at www.clcillinois.edu/personalenrichment/CCL. All documentation or certificates proving completed prior training must be submitted to CLC via email at cpeinfo@clcillinois.edu or delivered in person to Room T317 at the Grayslake Campus no less than five business days prior to the start date of any class.

CONCEALED CARRY LICENSE TRAINING – 8 HOURS

This class is only for those students who have completed eight hours of previous training approved by the Illinois State Police. Any previously completed training must be authenticated by the College of Lake County prior to a student attending class. All documentation or certificates proving completed prior training must be submitted to CLC via email at CPEInfo@clcillinois.edu or delivered in person to the Personal

7614 CPER 41-001

Sunday, March 8, 9 a.m. to 1 p.m.
Grayslake Campus, E121
AND
Sunday, March 8, 3-7 p.m. at range
2 Sessions
\$199 M. Jimenez

CONCEALED CARRY LICENSE TRAINING - 16 HOURS

This course will satisfy the legal training requirements for eligible residents who wish to apply for permission to carry a concealed firearm. In this course, firearm knowledge, safety and personal protection will be emphasized in order to gain the appropriate mindset and skills needed for responsibly exercising the right to carry. This training program includes live fire range qualification as well as the required classroom hours which will thoroughly cover the directives and restrictions outlined in the new law. Participants in this class must be at least 21 years of age and if a resident of the state of Illinois, be eligible to possess a valid FOID card. All participants will be required to qualify on the range and will attend classroom topics covering State and Federal Laws relating to the ownership, storage, carry and transportation of a firearm as well as weapons handling as defined in the statute and administrative rules. Students are prohibited by law from bringing firearms to campus. This includes all buildings and parking lots. Students should NOT to bring their firearms to class. Weapons should only be brought to the final class meeting, which takes place at a shooting range. Range time is subject to change.

7613 CPER 40-001

Saturday, March 7, 9 a.m. to 5 p.m.
AND
Sunday, March 8, 9 a.m. to 1 p.m.
Grayslake Campus, E121
AND
Sunday, March 8, 3-7 p.m. at range
3 Sessions
\$299 M. Jimenez

CONCEALED CARRY LICENSE TRAINING - 12 HOURS

A 12-hour training option is also available for students with four hours of qualified previous training. Call (847) 543-2980 for information.

Learn more about Michael Jimenez on page 13.

CPR

HEARTSAVER CPR WITH ADULT, CHILD AND INFANT TRAINING

This American Heart Association course is designed for the general public and is not intended for healthcare professionals or healthcare students. This is an ideal course for day care providers, teachers and anyone interested in learning CPR. Certification is good for two years. A textbook is required and may be purchased at the CLC Bookstore.

7583 CWEL 30-001

Thursday, February 20
5:30-8:30 p.m.
1 Session
Grayslake Campus, T347
\$65 S. Frankson

7584 CWEL 30-002

Thursday, May 7
5:30-8:30 p.m.
1 Session
Grayslake Campus, T347
\$65 S. Frankson

Looking for BLS Healthcare Provider CPR classes? See page 16.

Need to buy a textbook?
Visit www.clcillinois.edu/bookstore
for bookstore hours and information.



Embark: Life Skills for Young Adults

If it matters to you, it matters to us. Embark on a smooth voyage to the isle of adulthood. Short-term online classes in:

- Investing
- Writing
- Interior Design

See page 45 for more information and to enroll.

Creative Arts

Students age 14-17 may register for Creative Arts classes through the Explore program and attend with a registered parent or other authorized adult. Minimum age for Beginning Glassblowing is 16 (Parents of students age 14-17 must sign a waiver with Patterson Glassworks). Call (847) 543-2980 for more information.

Glassblowing

Glassblowing classes meet at Peter Patterson Glassworks, 888 Tower Road, Unit E, Mundelein. Proper attire is mandatory: long-sleeved cotton shirt, long pants, socks, close-toed shoes, a pair of sunglasses. Course fee covers all materials. Class time may vary depending on the number of students. Pieces need to cool so you will be able to pick them up in three days. You will leave these classes with a better appreciation for working with Hot Glass.

CREATIVE ARTS: CREATIONS FOR YOUR SPRING HOLIDAYS

NEW! BEAUTIFUL BLOWN GLASS CREATIONS

Choose from three project classes: create a small heart, a personalized pendant or a beautiful flower or shamrock. Intended for beginners with little or no hot shop experience, this hands-on class will concentrate on making a one-of-a-kind project of your choice using various processes and colors.

CREATE A VALENTINE HEART (SMALL)

7434 CCRF 1-033
Friday, February 7
5-8 p.m.
1 Session
\$35 P. Patterson

CREATE A GLASS PENDANT

7430 CCRF 1-031
Friday, May 1
5-8 p.m.
1 Session
\$35 P. Patterson

CREATE A GLASS FLOWER OR SHAMROCK

7431 CCRF 1-032
Friday, March 6
5-8 p.m.
1 Session
\$35 P. Patterson

TASTE OF GLASS: GLASSBLOWING PAPERWEIGHTS

Intended for beginners with little or no hot shop experience, this hands-on class will concentrate on making four different round paperweights using various processes and colors: Urchin, pen/ring/note holder, flower and window sparkler.

7432 CCRF 2-031

Wednesday, March 18
6-9 p.m.
1 Session
\$125 P. Patterson

MAKE YOUR OWN BLOWN GLASS EASTER EGG OR COSMIC PLANET

Choose from two project classes: create a stunning blown glass egg or a cosmic blown glass planet. Intended for beginners with little or no hot shop experience, this hands-on class will concentrate on making a beautiful project of your choice using various processes and colors.

7433 CCRF 19-031

Friday, April 3
5-8 p.m.
1 Session
\$65 P. Patterson

COMING THIS SUMMER!

MAKE A COSMIC GLASS PLANET (SUMMER CLASS)

Registration opens March 12, 2020. Be sure to select "Summer Session" when registering.

8843 CCRF 19-031

Friday, June 5
5-8 p.m.
1 Session
\$65 P. Patterson



Textile Arts

BEGINNER SEWING: SEW HAPPY TOGETHER

Here's a fun class to show you and your sewing machine how to "sew happy together." Get acquainted with your machine: needles, threading and troubleshooting. Learn how to read a pattern and choose fabric. Enjoy cutting, assembling and completing your own sewing project. A supply list will be provided before the first night of class. Bring your own sewing machine, sharp scissors and a box of pins to the first class. The instructor will discuss additional supplies in class. Class size is limited. Returning students are welcome.

7482 CCRF 31-001

Tuesday, January 28 to March 3
6:30-8:30 p.m.
6 Sessions
Grayslake Campus, C106
\$175 M. Wagner Webb

SEWING PROJECT OF YOUR CHOICE

Reluctant to begin a sewing project you have always wanted to tackle? Get the helpful support and guidance you need to start and finish your project. Our seasoned instructor will answer questions, offer suggestions, and give direction that will keep you motivated. Learn and create in a fun environment with fellow project conquerors.

7483 CCRF 47-001

Tuesday, March 10 to May 5
6:30-8:30 p.m.
8 Sessions
Grayslake Campus, T232
\$195 M. Wagner Webb

EMBROIDERY: KEEPING YOU IN STITCHES

Embroidery samplers are a part of American history. Enjoy the home arts again. Learn how to create a variety of beautiful stitches to decorate clothing, gifts, home decor or anything you care to embellish. A supply list will be provided. Register with a friend or family member and create some memories. Feel free to bring a sack lunch for the break.

7502 CCRF 48-001

Saturday, March 7-14
9-11 a.m. AND 12-2 p.m.
(One hour break)
2 Sessions
Grayslake Campus, TBA
\$89 M. Wagner Webb



Drawing

MORE CREATIVE DRAWING WITH ZENTANGLE®: VALENTINE HEARTS AND SPIRAL DESIGNS

Returning Zentangle® students, learn and practice new stand-alone patterns: Valentine hearts or spiral designs. Anyone can draw easily using the Zentangle® technique – no artistic talent needed to be successful! Leave class with your own beautiful creation, a quiet mind and relaxed body. Prerequisite: Introductory Zentangle class. Bring your supplies from the introductory class (pens, tortillon and pencil). Purchase supplies directly from the instructor in class (approximately \$2-\$7).

VALENTINE HEARTS

7485 CCRF 56-001
Thursday, February 6
6:30-8:30 p.m.
1 Session
Grayslake Campus, TBA
\$39 C. Freitas

SPIRAL DESIGNS

7486 CCRF 56-002
Thursday, April 23
6:30-8:30 p.m.
1 Session
Grayslake Campus, TBA
\$39 C. Freitas

More creative arts classes available online!

- Introduction to Digital Scrapbooking
- Drawing for the Absolute Beginner
- Arts and Crafts for Fun and Profit

Visit www.ed2go.com/clc for a complete list and to register. See page 45 for details.

Culinary



NEW! ITALIAN CUISINE - LEARN THE BASICS

Join our Chef Vena for a two-night class in learning how to cook authentic Italian dishes paired with the right wines. Your class will be held in the kitchens of Prairie, CLC's student run restaurant. Hurry, only ten spaces are available for this exceptional opportunity. Wear long sleeves, closed toed shoes and bring your sense of adventure. This is not to be missed.

7600 CDIS 53-010

Tuesday, April 14 and 28
(No class April 21)
6-9 p.m.
2 Sessions
Grayslake Campus, A012
\$125 Chef Vena



Dance

BALLROOM DANCE

BEGINNING BALLROOM DANCING

Ballroom dancing is not just for your first dance! Feel confident whether on a cruise, at a wedding or out on the town. Learn classic dance moves and have fun while you impress the competition just like those on "Dancing with the Stars." Ten weeks of professional dance instruction includes fox trot, waltz, cha cha and tango. Enjoy lots of personal attention with two instructors. Couples are encouraged to register together. Register early as class size is limited.

7615 CDAN 2-001

Friday, February 7 to April 17
(No class March 27 – Spring Break)
7-9 p.m.
10 Sessions
Grayslake Campus, PE Building, 0706
\$199 R. & B. Sealander

COMING THIS SUMMER!

INTERMEDIATE BALLROOM DANCING (SUMMER CLASS)

Take your ballroom dancing to the next level. Continue to enjoy professional dance instruction with lots of personal attention in this shorter, four-session class. Build on what you have mastered so far and learn advanced fox trot, waltz, swing and Latin dance steps. Couples encouraged; class fee is charged per individual. Space is limited! Prerequisite: CLC Beginning Ballroom Dancing class. Couples only, please. **Summer registration opens March 12, 2020. Be sure to select "Summer Session" when registering.**

8850 CDAN 3-001

Friday, May 8-29
7-9 p.m.
4 Sessions
Grayslake Campus, T335
\$99 R. Sealander

SWING DANCE

SWING DANCING 2

Now with two instructors! Take the basics you learned in Swing 1 and add complexity and polish. Practice with more music with varying tempos and learn to speed up, slow things down and throw in some breaks. Spice up the basic footwork and take your moves to another level. Most importantly,

build mental and physical endurance on the dance floor. Wear comfortable, workout type clothes and sporty, soft-soled shoes. Prerequisite: Swing Dancing 1 with Vyta Pabedinskas. No partner necessary.

7421 CDAN 20-001

Wednesday, February 5 to March 18
7-8 p.m.
7 Sessions
Grayslake Campus, T335
\$115 V. Pabedinskas & E. Schapals

SWING DANCE SAMPLER

In the swing scene of Chicago and Milwaukee you will encounter more than just East Coast and Lindy Hop. Enjoy this introduction to other social dances popular on the local dance. Balboa - a dance known for its fancy quick footwork in close contact with your partner. Partner Charleston - evolving from the solo version, the feet keep flying but in tandem now. Collegiate Shag - the most energetic of the dances, comes out when the music hits high speeds. No previous dancing experience is necessary, but it would be helpful. No partner required; we will be rotating partners. Comfortable shoes are a must.

7420 CDAN 7-001

Wednesday, April 1 to May 13
7-8 p.m.
7 Sessions
Grayslake Campus, T335
\$115 V. Pabedinskas & E. Schapals

LATIN DANCE

LEARN SOCIAL LATIN DANCE

Learn to dance the four most popular social Latin dances featured in clubs, at weddings and at social events that play popular music: Salsa, Bachata, Merengue and Rumba. Get moving and just have fun!

7544 CDAN 10-001

Monday, February 10 to April 6
7-8 p.m.
8 Sessions
Grayslake Campus, T335
\$115 A. & R. Hill

7543 CDAN 10-011

Thursday, March 12 to May 7
7-8 p.m.
8 Sessions
Lakeshore Campus, 1NG 008
\$115 A. & R. Hill

Fitness

Stay active! Stay fit! Stay healthy! From cardio to strength training, flexibility to sports-focused classes, Personal Enrichment offers a variety of fitness classes to meet your needs. These competitively priced, NON-CREDIT classes should not be taken for a grade or credit hours. Join our highly trained and experienced instructors and exceed your goals.

Visit www.clcillinois.edu/personalenrichment/fitness for complete class descriptions.

All classes (except T'ai Chi Chih) are held in the Physical Education Center, Building 7, Grayslake Campus and are \$135 each.

Classes begin the week of January 27 and fill quickly. Please register early to get the schedule you want.

AEROBIC DANCE

7371 CFIT 16-001
Monday and Wednesday
6-6:50 pm D. Paul

BEGINNING AIKIDO SKILLS

7381 CFIT 7-001
Wednesday
8-9:50 p.m. C. Tseng

ADVANCED AIKIDO SKILLS

7429 CFIT 9-001
Monday
8-9:50 p.m. C. Tseng

BODY TONING - WOMEN

7383 CFIT 21-001
Monday and Wednesday
7-7:50 p.m. D. Paul

DANCE AND TONE WITH PILATES

7384 CFIT 56-001
Saturday
9:30-11:20 a.m. D. Paul

INTRODUCTION TO RUNNING

7382 CFIT 25-001
Saturday
8-9:50 a.m. T. Skarbalus

KICKBOXING

7380 CFIT 6-001
Tuesday
7-8:50 p.m. Staff

PILATES

7369 CFIT 1-001
Monday and Wednesday
11-11:50 a.m. T. Wheeler

7370 CFIT 1-002
Monday and Wednesday
5-5:50 p.m. T. Wheeler

SPINNING & STRENGTH

7372 CFIT 29-001
Tuesday and Thursday
5-5:50 p.m. R. Atkinson

7373 CFIT 29-002
Monday and Wednesday
12-12:50 p.m. R. Atkinson

STRENGTH TRAINING

7378 CFIT 55-001
Tuesday and Thursday
8-8:50 a.m. T. Wheeler

7379 CFIT 55-002
Monday and Wednesday
1-1:50 p.m. R. Atkinson

BEGINNING T'AI CHI CHIH

7377 CFIT 53-001
Wednesday
7-8:50 p.m. McElhose

YOGA

7375 CFIT 51-001
Tuesday and Thursday
6-6:50 p.m. T. Skarbalus

7376 CFIT 51-002
Tuesday and Thursday
12-12:50 p.m. S. Fullington

ZUMBA

7374 CFIT 50-001
Tuesday and Thursday
11-11:50 a.m. L. Lancaster



Genealogy

FINDING YOUR ROOTS - A GENEALOGY JOURNEY

Who are you and from where do you originate? Want to answer those questions and many more? Join CLC's award-winning instructors John and Maria Tenuto for two evenings and explore your past via Ancestry.com, Fold3, newspaper databases, FamilySearch and offline resources such as photographs and interviews. Before class, sign up for Ancestry.com's free membership. You may bring your own laptop, tablet or a hand held computing device to class.

7608 CDIS 54-001
Thursday, April 9-23
7-9 p.m.
3 Sessions
Grayslake Campus, C222
\$50 J. & M. Tenuto



Music



Music - Group Piano

Group Piano classes are held at Songbird Studio, Inc., 130 S. IL Route 83, Grayslake.

BEGINNER GROUP PIANO (CRASH COURSE)

Have you always wanted to play the piano but never had time to learn? Join this quick, fun, recreational opportunity to learn some piano playing basics with others like you. This class makes a great gift to help someone accomplish their bucket list.

7427 CMSC 64-031
Saturday, January 25 to February 15
11-11:45 a.m.
4 Sessions
Songbird Studio, Inc.
\$125 D. Hansen

BEGINNER GROUP PIANO (CRASH COURSE) PART 2

Continue to build your piano playing skills in this fun, supportive part two class.

7428 CMSC 67-031
Saturday, February 29 to March 21
11-11:45 a.m.
4 Sessions
Songbird Studio, Inc.
\$125 D. Hansen

Music - Vocal

GOSPEL CHOIR

Perform diverse sacred music of the African-American tradition, including spirituals and gospel music, past to present. Techniques of correct singing are addressed. No audition required. Firsttime Gospel Choir students will receive information early in the semester regarding the purchase of concert attire.

7396 CMSC 1-001
Monday, January 27 to May 11
7-9 p.m.
Grayslake Campus, D100
\$50 M. Hunter

CLC SINGERS

This student-based ensemble engages in the enjoyment, study, preparation and performance of diverse choral music, including madrigals, ballads and popular modern idioms. Emphasis is given to techniques of correct singing. An audition is required. For audition information please call Ingrid Mikolajczyk at (847) 543-2000 ext. 33214 or email imikolajczyk@clcillinois.edu. If college credit is desired, enroll in MUS 120-001. First-time CLC Singers will receive information early in the semester regarding the purchase of concert attire.

7395 CMSC 2-001
Tuesday, January 21 to May 12
1-3 p.m.
Grayslake Campus, D100
\$50 I. Mikolajczyk

CHOIR OF LAKE COUNTY

Comprised of members of the community at large, as well as students, this choir seeks to serve the artistic needs of the community. Its singers participate in the enjoyment, preparation and performance of traditional choral literature, from early Renaissance to present day. Techniques of correct singing are addressed. Open to all for credit or noncredit without audition. If college credit is desired, enroll in MUS 120-003. First-time Choir of Lake County students will receive information early in the semester regarding the purchase of concert attire.

7394 CMSC 3-001

Tuesday, January 21 to May 12
7-9 p.m.
Grayslake Campus, D100
\$50 I. Mikolajczyk

CHAMBER SINGERS

The Chamber Singers is CLC's newest vocal ensemble. The ensemble provides the opportunity to study and perform challenging repertoire at an advanced level. An audition is required. For audition information, please contact Ingrid Mikolajczyk at (847) 543-2000 ext. 33214 or Imikolajczyk@clcillinois.edu. If college credit is desired, enroll in MUS 120-002. Students registering for this chorus for the first time will receive information early in the semester regarding the purchase of concert attire.

7393 CMSC 9-001

Wednesday, January 22 to May 13
6-8 p.m.
Grayslake Campus, D100
\$50 I. Mikolajczyk

Music - Instrumental

WIND ENSEMBLE

Offered for the enjoyment and convenience of individuals who wish to play their instrument and do not need college credit. Also offered to provide band experience and opportunities for the college community. An audition is required. For audition information, please call Dr. Michael Flack at (847) 543-2566. If college credit is desired, enroll in MUS 123-001.

7392 CMSC 4-001

Thursday, January 23 to May 14
7:30-9 p.m.
Grayslake Campus, P101
\$50 M. Flack

JAZZ ENSEMBLE I

Understanding and enjoyment of instrumental music through selected examples of standard instrumental ensemble literature of all periods. Offered for individuals who do not want or need college credit. An audition is required. For audition information, please call Dr. Michael Flack at (847) 543-2566. If college credit is desired, enroll in MUS 223-001.

7389 CMSC 5-001

Monday, January 27 to May 11
7:30-9 p.m.
Grayslake Campus, P101
\$50 M. Flack

JAZZ ENSEMBLE II

Understanding and enjoyment of instrumental music through selected examples of standard instrumental ensemble literature of all periods. Offered for individuals who do not want or need college credit. No audition is required. If college credit is desired, enroll in MUS 223-002.

7390 CMSC 7-001

Tuesday, January 21 to May 12
7:30-9 p.m.
Grayslake Campus, P101
\$50 J. Mojziszek

CONCERT BAND

Offered for the enjoyment and convenience of individuals who wish to play their instrument and do not want or need college credit. Also offered to provide band experience and opportunities for the college community. No audition is required. If college credit is desired, enroll in MUS 123-002.

7391 CMSC 6-001

Wednesday, January 22 to May 13
7:30-9 p.m.
Grayslake Campus, P101
\$50 J. Mojziszek



Photography

Students age 14-17 may register for photography classes through the Explore program and attend with a registered parent or other authorized adult. Call (847) 543-2980 for more information.

INTRODUCTION TO PHOTOSHOP

Explore the world of creativity that photo editing software opens up to the photographer. Learn to use the basics of Adobe Photoshop and how it can work with Lightroom and other independent products. Intended for photographers who have a good understanding of camera functions and have experience creating compositionally strong photos but who have little experience with Photoshop. Build a strong foundation for exploring the possibilities that Photoshop offers to improve your images. Coursework and examples are based on Windows using Photoshop CC software but Mac users should not have any issues. Bring your laptop (Mac or PC) with Adobe's Photoshop CC or later updates (2014 or newer) installed and functioning. Specific shooting assignments will provide opportunities to practice techniques.

7418 CPTO 54-001

Tuesday, February 11 to April 7
(No class March 24)
6:30-9 p.m.
8 Sessions
Grayslake Campus, T345
\$189 J. Harold

PHOTOGRAPHY BASICS FOR BEGINNERS

Now eight weeks! Just beginning to explore photography? Get the most out of your digital camera by discovering how to use some of its basic functions. Learn to compose your shots and understand difference between a mediocre and a good photograph. Part of the course will be driven by what you and classmates want to learn and discuss. Plan to provide your own transportation to two class meetings at outdoor locations to be determined by the class. Bring your DSLR to class each week.

7419 CPTO 8-001

Saturday, March 7 to May 9
(No class March 28 and April 11)
9-11:30 a.m.
8 Sessions
Grayslake Campus, T345
\$225 J. Harold



WELL, SHOOT!

Sometimes you need a little push for inspiration. If your camera work could use a fresh dose of enthusiasm, let professional photographers Mike Caplan and John Petrovic's contagious zeal provide that creative nudge and motivate you to excellence. Through classroom exercises, image critiques and a Saturday field workshop (at the Chicago Botanic Garden - date to be determined), learn to maximize your camera skills to produce more striking images. Practice close-up/macro, portraiture, light painting, landscape and food photography. Your new skills will transfer to whatever specialty you like best. Reignite and enjoy your passion for this art form. Class requirements: fundamental knowledge of your camera controls including how to adjust aperture, shutter speed, ISO, WB, and focusing.

7484 CPTO 7-001

Wednesday, March 11 to April 15
7 9:30 p.m.
Grayslake Campus, T347
AND
Saturday, Date TBD
8-10 a.m.
Chicago Botanic Garden
5 Sessions
\$159 M. Caplan & J. Petrovic

PHOTOGRAPHING IN NATURE - FIELD COURSE

Eager to improve your nature photography images? Learn to create your best scenic or close-up nature images through two sessions of classroom instruction and image review followed by fun hands-on field experience at a local field location where you can practice what you have learned. The third session is devoted to personalized instructor feedback of your field trip images. Prerequisite: working familiarity with your equipment and basic camera settings such as f-stop, ISO, shutter speed, etc. and ability to load your images to a flash drive. To the first class, please bring up to five sample images in jpg format on a USB flash drive, an adjustable digital SLR camera with a manual setting (or smartphone), your camera manual and a tripod. You are responsible for your own transportation to the field locations. Bring your own sack lunch and beverage.

7499 CPTO 11-001

Saturday, May 2-9
9:30 a.m. to 5 p.m.
AND
Saturday, May 16
9:30 a.m. to 12:30 p.m.
3 Sessions
Grayslake Campus, A135
\$225 D. Simpson

More photography classes available online!

- Travel Photography
- Photographing People
- Photoshop CC

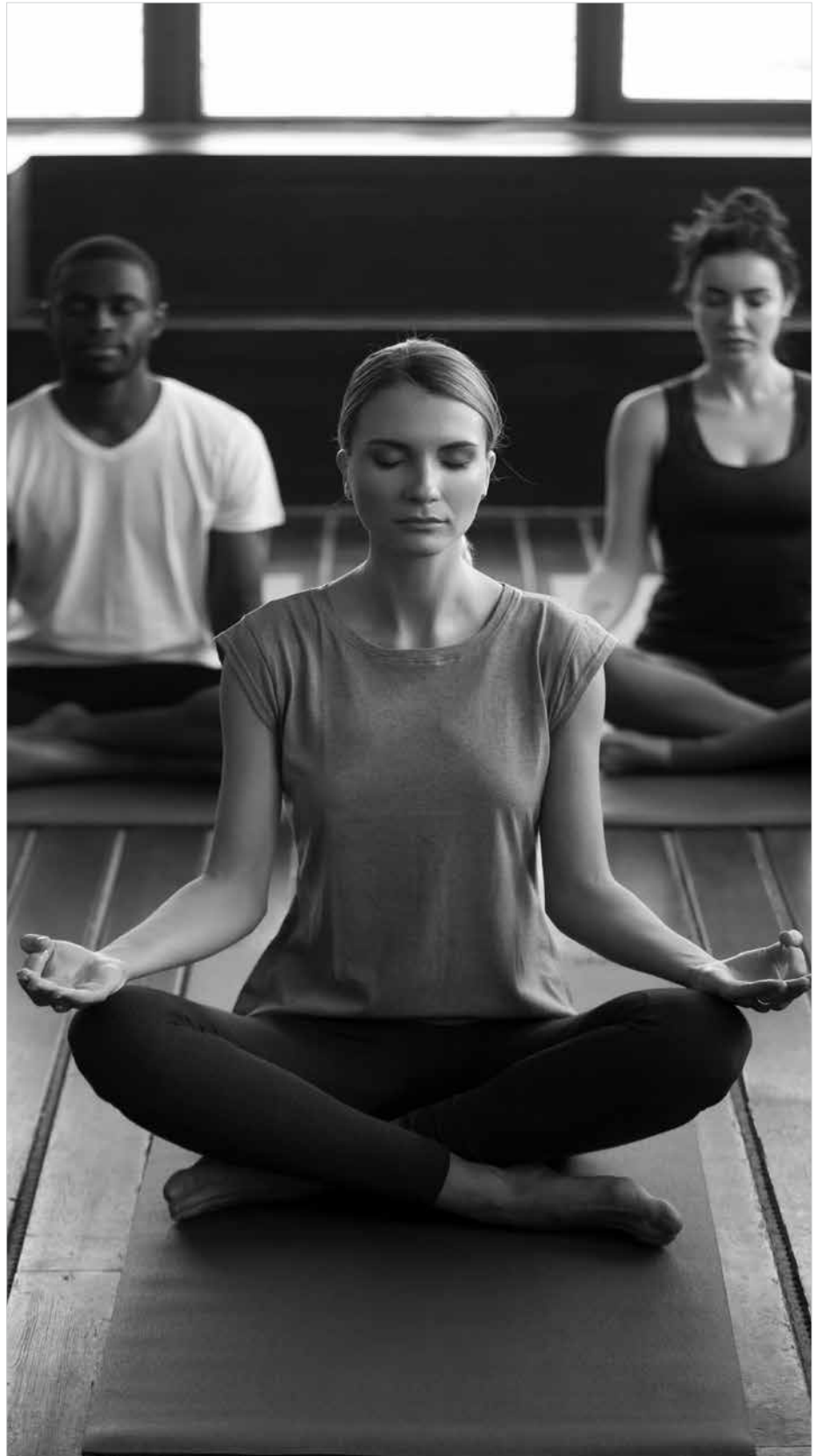
Visit www.ed2go.com/clc for a complete list and to register. See page 45 for details.

Wellness

MINDFULNESS - TRANSFORMATION TOOLS

Join noted expert Christine Lopez for four evenings and experience your path to mindfulness via breathing techniques, meditation, guided imagery and yoga. These smooth and easy sessions will empower you to reduce stress and support your over-all well-being. Invest in yourself!

7609 CDIS 49-001
Tuesday, February 4-25
6:30-8 p.m.
4 Sessions
Grayslake Campus, TBA
\$120 Lopez



Personal Enrichment

Explore and Engage

Looking for the ultimate learning experience for your children?
Send them to college!

EXPLORE: STEAM based academic enrichment.
Taught by experienced educators. Fun for grades 1-8.

ENGAGE: STEM based career explorations and innovative experiences for teens in grades 9-12.



SUMMER 2020 YOUTH PROGRAMS START JUNE 15.

Plan for a STEAM-y summer! 2020 is the summer to catch a vision for STEAM opportunities at College of Lake County. Watch your mail and check online for our camp brochures. Registration opens March 2, 2020. Potential for your child's fun and academic enrichment is limitless but space is not. Register early!

EXPLORE CAMPS (GRADES 1-8)

All New STEAM Fun with: Space, Cooking, Engineering, Graphic Design.

ENGAGE STEAM CAREER EXPLORATION (GRADES 9-12)

Partner with us for a few weeks to Test Drive Careers in Culinary, Healthcare, Criminal Justice, Automotive Technology.

Watch the mail for our brochures and registration materials or visit www.clcillinois.edu/youth.

Registration opens March 2, 2020. Programs fill quickly!



Get ready for Maker Week 2020! April 18-25, 2020

Maker Week Build and Design Days are **FREE** events for middle and high school aged students who want to access the Baxter Innovation Lab equipment and staff as resources for any project related to Maker Week activities including:

- 4H Robotics Showcase
- Lake County Robotics Competition
- Big Idea, Jr.
- Rube Goldberg Challenge
- Maker Faire Lake County

CLC Engineering Student interns will be available to assist with individuals or teams in using the lab for robotics building, 3D printing, laser cutting, electronics, shop work, CNC routing, or as a meeting space. There is no fee to register. Material supply fees may apply depending on the project.

All Maker Week Build & Design Days meet in the Baxter Innovation Lab at the Grayslake Campus. Pre-registration is required. Email CPEInfo@clcillinois.edu, visit www.clcillinois.edu/youth then click on Forms, or call (847) 543-2980 for a registration form.

January
7492 CENG 12-001
Saturday, January 11
10 a.m. to 2 p.m.

February
7493 CENG 12-002
Saturday, February 8
10 a.m. to 2 p.m.

March
7494 CENG 12-003
Saturday, March 14
10 a.m. to 2 p.m.

April
7495 CENG 12-004
Saturday, April 4
10 a.m. to 2 p.m.

For more information on all Maker Week events visit www.clcillinois.edu/events/makerweek.

Engage: Test Prep

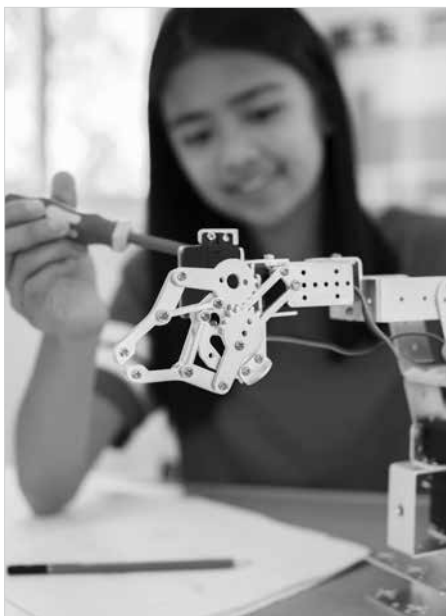
SAT PREP (GRADES 10-12)

Looking to prepare for and achieve your best on the SAT? Engage in algebra, geometry and basic mathematics refreshers to polish your math skills. Discover helpful ways to remember grammatical rules and effective strategies to help you approach reading passages and questions confidently. The Official SAT Guide (2020 Edition) is the required textbook. Be prepared for the upcoming SAT test dates of November 2 and December 7, 2019.

Be prepared for the upcoming SAT test dates of May 2 and June 6, 2020.

7191 CEXP 94-001
Saturday, February 8 to March 14
9 a.m. to 12 p.m.
6 Sessions
Grayslake Campus, C222
\$250 S. Pantelic & S. Martinez

To enroll in Explore or Engage classes see the registration form on page 43 or visit www.clcillinois.edu/youth. Contact Personal Enrichment at (847) 543-2980 or CPEInfo@clcillinois.edu with questions.



Explore: Fast-Paced Program for Gifted Students

Challenge your gifted seventh or eighth grade student with our exciting and thought-provoking Fast-Paced math and verbal courses. All are designed to engage and equip your bright student for academic success.

Lake County students who are identified by their school districts as scoring in the 95th percentile on an acceptable achievement test in sixth grade will be invited to participate. Homeschool, private and parochial school parents may email CPEInfo@clcillinois.edu for information about submitting their children's scores.

Visit www.clcillinois.edu/fastpaced for program details.

FAST-PACED 7TH AND 8TH GRADE MATH (FALL AND SPRING)

This two-year experience will challenge and help build your student's confidence through math topics not typically included in traditional 7th and 8th grade Algebra or Geometry math classes.

FAST-PACED 7TH AND 8TH GRADE VERBAL (FALL AND SPRING)

This two-year experience will challenge and help build your student's confidence in reading, writing, speaking and listening. Verbal topics include Greek and Latin stems, grammar, literature, creative writing, speech writing, oral presentations, and digital portfolios.

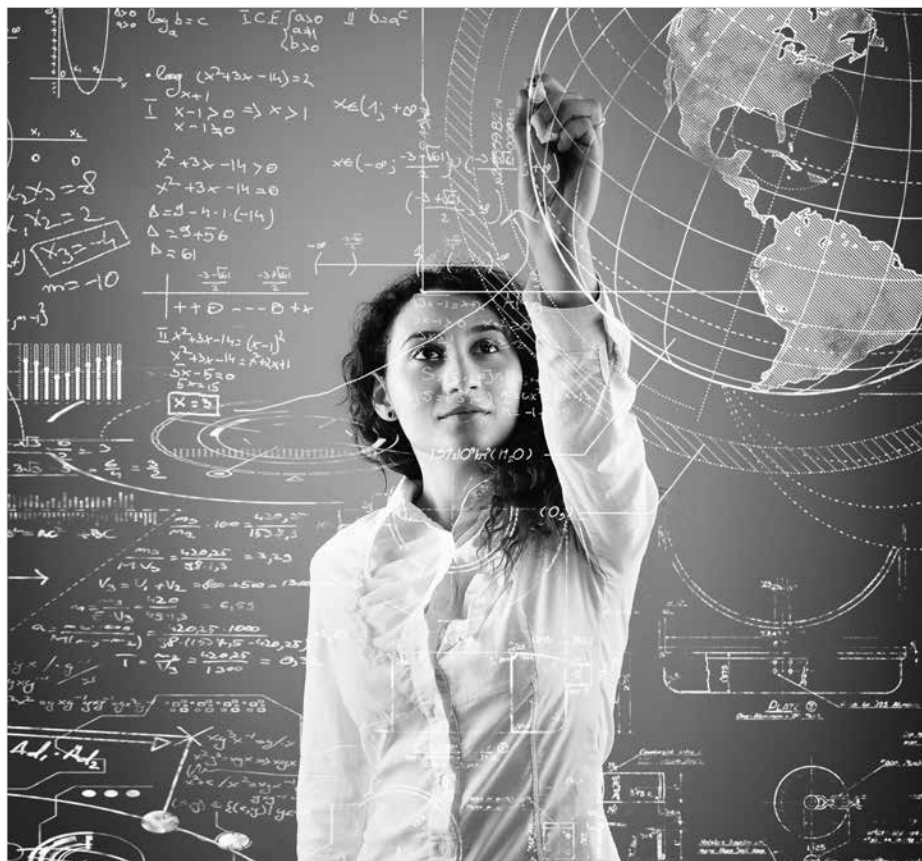
Check with your Lake County school district gifted coordinator in January 2020 for information about your sixth grader's eligibility for 2020-2021.

STEM DAY FOR GIRLS (Grades 7-12)

This annual free event is for girls who are interested in STEM (Science, Technology, Engineering, Math). Engage in a series of hands-on activities and inspiring presentations designed to motivate you to become an innovative and creative thinker and to pursue a STEM career. Enjoy a welcoming introduction to college life at CLC as well as a light lunch. This free event is on **Saturday, February 29** at the Grayslake Campus and is open to school groups, scout groups, youth groups and individual girls. Visit www.clcillinois.edu/stem to register.

STEM for Parents!

Attend STEM for Parents on **Saturday, February 29** to participate in a workshop designed just for you. Learn how to encourage your daughter now. Experience hands-on activities that you can repeat at home. Stay and learn about STEM programs at CLC, scholarship opportunities and more. Visit www.clcillinois.edu/stem to register.



Spring 2020 Youth Registration Form for Explore & Engage Classes

Instructions: Register early. Complete the information below and sign the Parental Approval portion. Information is protected under FERPA and remains confidential.

Mail, email or fax the completed form to:

Email: CPEInfo@clcillinois.edu

Fax: (847) 543-3022

Mail: Personal Enrichment
Attn: Youth Program, Room T317, College of Lake County
19351 West Washington Street, Grayslake, IL 60030-1198

Student Information (Required-please print clearly)

Last Name _____ First Name _____ Initial _____

Date of Birth ____/____/____ Gender: Male Female

Preferred Email Address (required for class confirmation and communications)

Address

City _____ State _____ Zip _____

Preferred Phone (_____) _____

School _____ Grade entering Spring 2020 _____

Parent Approval (Required) / Payment Information/Withdrawal/ Cancellation Policy

My signature below indicates that I have read, understood and accepted the following:

- I accept financial responsibility for class cost and fees (students will not automatically be dropped for non-payment or non-attendance)
- The Personal Enrichment office will confirm by email the receipt of my student's registration form as well as confirmation of their enrollment. Payment information will be included.
- I will not include payment with this form. Payment options will be included in the confirmation email.
- Youth program registrations and withdrawals cannot be done online. All youth registrations and withdrawals are processed through the Personal Enrichment office.
- I will receive an informational email with class details within the week prior to the class start date. I understand I am required to escort my student to and from the check-in table each day to sign them in and out.

I understand that if my child must withdraw, I will:

- Visit www.clcillinois.edu/programs-and-classes/personal-enrichment/explore/forms to download and complete the Personal Enrichment Explore Program Cancellation form.
- Email the completed withdrawal form to CPEInfo@clcillinois.edu at least five business days prior to the start date of the camp or class. No refunds or credits after this deadline.

I have read and I understand the Parental Approval/Payment Information/Withdrawal and Cancellation Policy information above.

Parent/Guardian Signature _____

Date: _____

Father Mother Legal Guardian

Where did you hear about us?

Friend/Past Student Printed Schedule Flyer Other School _____ Daily Herald Camp Guide Patch.com Email

4-digit Course # (i.e. 4886)	Course Title and Location	Cost
TOTAL		

Need registration assistance?

Call Personal Enrichment (847) 543-2980 or e-mail CPEInfo@clcillinois.edu.

Visit www.clcillinois.edu/youth for class listings, instructor bios and withdrawal forms.

Clery Act

The College of Lake County is committed to maintaining a safe and secure educational environment. For more information, this report is available on the CLC Police Department website at www.clcillinois.edu/clery.

OFFICE USE ONLY: CLC ID _____ Date Received _____ Saved to T Drive _____

Registration Received Email _____ Confirmation Enrolled Email _____ Scholarship Sent _____

ENGAGE IN STEM CAREER EXPLORATION GRADES 9-12

*SUMMER 2019 PROGRAMS FILLED QUICKLY
LOOK FOR EXPANDED PROGRAMS IN SUMMER 2020*



AUTOMOTIVE TECHNOLOGY



BROADCASTING/RADIO



CRIMINAL JUSTICE



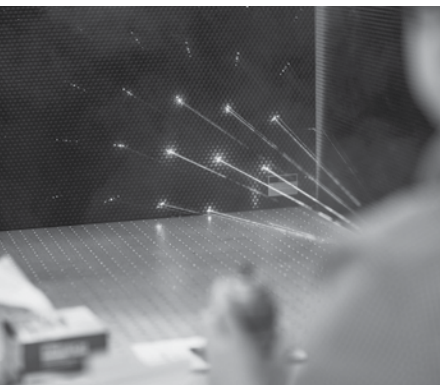
CULINARY



ENGINEERING



INNOVATION



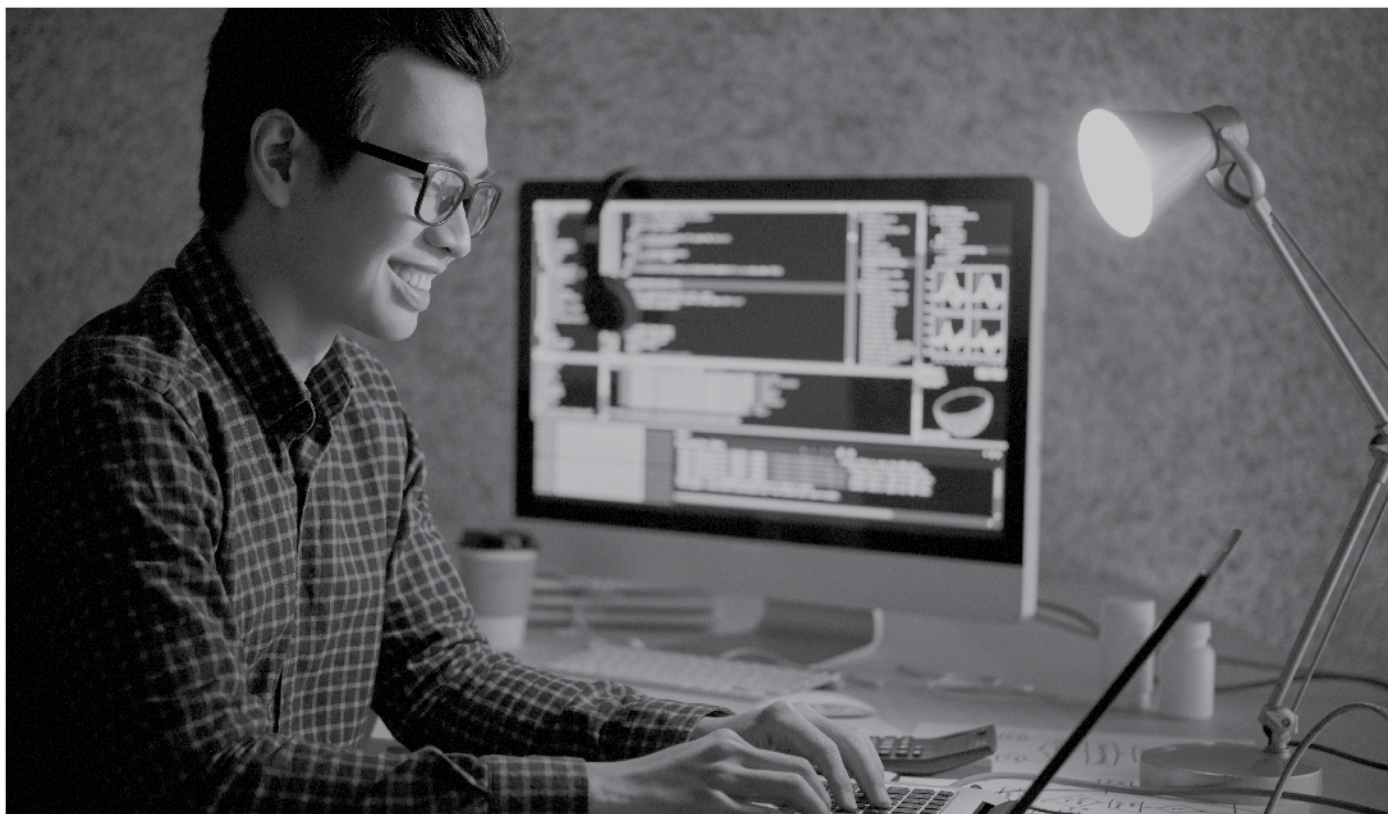
LASERS/PHOTONICS/OPTICS



NURSING AND HEALTHCARE



PHOTOGRAPHY



Online Courses for Youth and Adults

Our instructor-led online courses offered through ed2go are informative, fun, convenient and highly interactive. We focus on creating warm, supportive communities for our learners. New course sessions begin monthly. Visit our website for start dates. Complete any of these courses entirely from your home or anywhere, any time.

Learn from the comfort of your home!

- 24-hour access
- Discussion areas
- 6-week format
- Expert instructors

Prices start as low as \$115

DRAWING FOR THE ABSOLUTE BEGINNER

Gain a solid foundation in drawing and become the artist you've always dreamed you could be!

DISCOVER DIGITAL PHOTOGRAPHY

Explore the fascinating world of digital photography equipment.

MATH REFRESHER

Gain confidence in your basic math skills and start using math to your advantage.

INTRODUCTION TO ALGEBRA

Understand how algebra is relevant to almost every aspect of your daily life, and become skilled at solving a variety of algebraic problems.

SPEED SPANISH

Learn six easy recipes to glue Spanish words together into sentences, and you'll be engaging in conversational Spanish in no time.

GRAMMAR REFRESHER

Develop your English grammar skills and take your writing and speaking to the next level of excellence in this course.

DISCOVER SIGN LANGUAGE

Discover the fun of learning sign language and using your hands to communicate.

STOCKS, BONDS, AND INVESTING: OH, MY!

Learn how to make wise investment decisions so that you have enough money to live comfortably through your retirement.

INTRODUCTION TO INTERIOR DESIGN

Explore interior design fundamentals as you learn how to transform any room into a beautiful and functional space.

WRITING ESSENTIALS

Master the essentials of writing so you can excel at business communications, express yourself clearly online, and take your creative literary talents to a new level.

BEGINNING WRITER'S WORKSHOP

If you have a story that needs to be written, an online writing workshop is a great place to start. This course will help improve your writing skills and discover new ways to stretch your creative muscles.

Personal Enrichment

Discovery: Programs for Adults

- Immersive experiences
- Short-term classes at all campuses
- Interesting topics
- Relaxed atmosphere
- Knowledgeable, engaging instructors



Discovery: Current Events

ANALYSIS OF THE 2020 HOUSE AND SENATE RACES

Ever hear the phrase, “all politics is local”? It’s true. Join Julie Strauss and examine the most closely contested House and Senate races. You will also explore the Democratic Party’s strategy to retain hold of the US House of Representatives. Do not miss this early look at the upcoming congressional races.

7585 CDIS 63-001

Wednesday, April 1
9:30-11:30 a.m.

1 Session

Southlake Campus, R024

\$20 J. Strauss

GERMANY 2020 - UNDERSTANDING THE CURRENT DEVELOPMENTS

Almost 30 years after unification, Germany is facing a challenging time: upsetting results in three state elections, an unsteady economy, woes from Brexit, high tariffs and a political class that is unclear on strategy and direction. What does the future hold for Germany? Join Anette Isaacs for a fascinating discussion on the latest developments.

7586 CDIS 66-001

Tuesday, January 28
9-11 a.m.

1 Session

Southlake Campus, R024

\$20 A. Isaacs



MEDICARE FOR ALL? MEDICARE FOR SOME? HEALTHCARE AND THE PRESIDENTIAL ELECTION

Healthcare regularly polls as the top issue of concern for most voters. Join Julie Strauss for a deep dive into the relevant health care positions of the candidates you will want to know. Also, the class will evaluate the Affordable Care Act and current policies on health care. Don't miss this discussion.

7587 CDIS 70-001

Wednesday, April 1
1-3 p.m.
1 Session
Southlake Campus, R024
\$20 J. Strauss

GREAT DECISIONS: CURRENT WORLD IMPACT

Join Gary Midkiff for this 8-part discussion series exploring topics from the Foreign Policy Association on climate change, India and Pakistan, Red Sea Security, Human Trafficking, Northern Triangle of Central America, China and Latin America, the Philippines and ending with Artificial Intelligence. Please purchase the discussion book, Great Decisions, 2020 Edition from the Foreign Policy Association.

7580 CDIS 85-001

Thursday, January 23 to May 14
9:30-11:30 a.m.
8 Sessions
Southlake Campus, R024
\$150 G. Midkiff

Discovery: Film

MOVIES OF THE MCCARTHY ERA

The senator from Wisconsin saw communists everywhere and the HUAC saw them in Hollywood. Join John Kupetz and look at four films over four sessions about hunting witches and burning bridges. You will view and discuss a science fiction allegory, a Cary Grant film about "naming names", and then two more films on heroes, villains and victims. Take a look at Hollywood history and you decide what is true.

7605 CDIS 5-021

Monday, February 17 to March 9
1-3:30 p.m.
4 Sessions
Southlake Campus, R024
\$80 J. Kupetz

AGING ON THE SILVER SCREEN

This four-part series will look at how Hollywood has looked at aging; it isn't always pretty. You will see four films that feature George Burns, Art Carney, Lee Strasberg and Burt Lancaster. These protagonists do not go gently into that dark night. John Kupetz will guide the journey.

7606 CDIS 7-021

Monday, April 6-27
1-3:30 p.m.
4 Sessions
Southlake Campus, R024
\$80 J. Kupetz

BEST MOVIES ABOUT POLITICS

Everyone has their favorites. Join Barry Bradford as he combines film clips, insights, little-known stories and the opinions of film critics to come up with an astounding list for your consideration. Think "Mr. Smith Goes to Washington" and "The American President".

7610 CDIS 31-021

Friday, April 10-17
9:30-11 a.m.
2 Sessions
Southlake Campus, R024
\$40 B. Bradford

Discovery: Financial Management

RETIREMENT PLANNING TODAY

Living a rich retirement takes more than money. Because of tax law changes and the uncertain future of Social Security, a sound financial plan has never been more vital. Learn five strategies to manage investment risks, 11 ways to save money on taxes, questions to ask before buying insurance, how to handle your company retirement plan and how to calculate savings needed to retire. A \$25 fee for the 235-page textbook is payable to the instructor at the first class.

7581 CFIN 2-001

Thursday, January 23 to February 6
6:30-8:45 p.m.
3 Sessions
Grayslake Campus, C216
\$35 R. Babjak

7582 CFIN 2-002

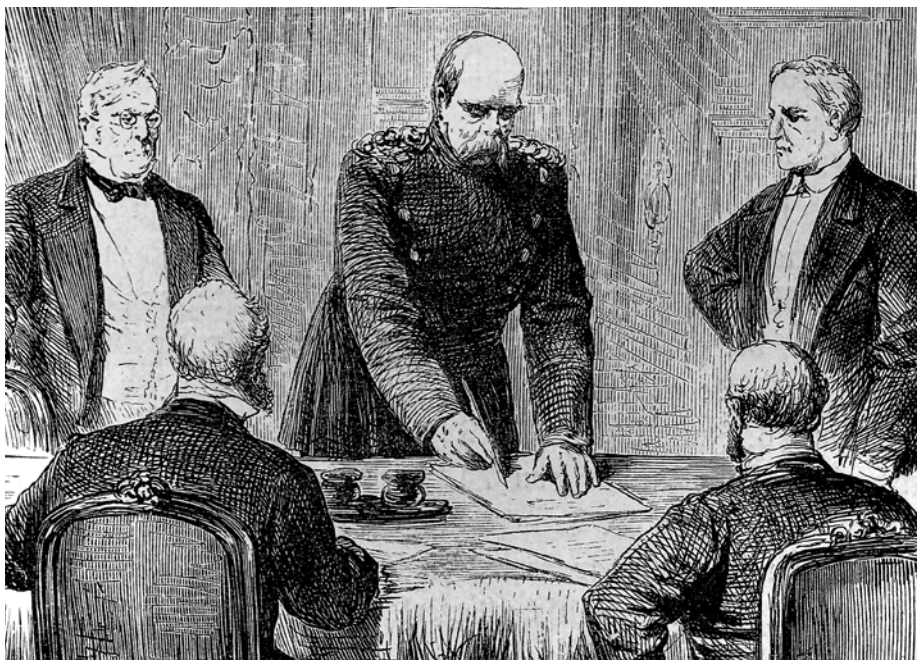
Tuesday, January 28 to February 11
6:30-8:45 p.m.
3 Sessions
Southlake Campus, V120
\$35 R. Babjak

More financial management classes available online!

- Stocks, Bonds, and Investing: Oh, My!
- Keys to Successful Money Management
- Personal Finance

Visit www.ed2go.com/clc for a complete list and to register. See page 45 for details.

Discovery: History



HISTORY IN PERSPECTIVE 100/75/50

Let's go deep into America and Americana 100, 75 and then just 50 years ago in this multimedia time capsule. We will look at the top news stories of those years, famous births and deaths, what things cost and the most popular movies. There will be some surprises for sure.

7621 CDIS 29-021

Monday, February 10-24
9:30-11 a.m.
3 Sessions
Southlake Campus, R024
\$60 B. Bradford

HISTORY OF THE MAFIA

This three-part class will trace the fascinating history of organized crime in America. How did those bandits become a network of criminals with massive amounts of money and power? The notions of immigrations, cultural identity and colorful personalities make this an unforgettable class. This is an offer you cannot refuse.

7601 CDIS 30-021

Monday, March 9-30
9:30-11 a.m.
3 Sessions
Southlake Campus, R024
\$60 B. Bradford

SIDNEY POITIER

One name and you think of acting excellence with grace and dignity. Mr. Poitier's life and films are a fascinating view of how America has transformed since the 1950s. This unique class celebrating Mr. Poitier's 93rd birthday, will inspire, entertain and engage you.

7611 CDIS 32-021

Friday, April 24
9:30-11 a.m.
1 Session
Southlake Campus, R024
\$20 B. Bradford

TWO FASCINATING ELECTIONS: 1860 AND 1960

Take a look back at two of the closest and most important elections in American history, 1860 with Abraham Lincoln and 1960 with John F. Kennedy. Two men who led this country during critical times: the Civil War and the change to younger elected officials.

7607 CDIS 33-021

Monday, May 11-18
9:30-11 a.m.
2 Sessions
Southlake Campus, R024
\$40 B. Bradford

A PEACE TO END ALL PEACE: THE TREATY OF VERSAILLES AND THE LEAGUE OF NATIONS

Leaning heavily on David Fromkin's book of the same name, this two-session class will examine the treaty, the role of the League of Nations and the impact on the world then and now. What were and are the benefits and do they outweigh the risks?

7620 CDIS 55-021

Thursday, April 9-16
1-3 p.m.
2 Sessions
Southlake Campus, R024
\$40 G. Midkiff

UNITED STATES 1932 TO 1941: RESPONDING TO THE GREAT DEPRESSION

This class will be centered on Roosevelt and the wide range of steps he took to try to correct our economy and nudge an isolationist Congress toward support for the countries that would become our allies.

7602 CDIS 68-001

Thursday, February 13-20
1-3 p.m.
2 Sessions
Southlake Campus, R024
\$40 G. Midkiff

OVERLOOKED WARS: 1812, 1846, 1898

What were those wars? The War of 1812 against Britain, the Mexican-America War and the Spanish American War. This two-session class will examine the military strategy, the social climate and the political currents. There was a lot going on that you did not learn in history class.

7598 CDIS 71-021

Thursday, March 12-19
1-3 p.m.
2 Sessions
Southlake Campus, R024
\$40 G. Midkiff

Discovery: Language

FOR ALL LANGUAGE CLASSES

A textbook is required and may be purchased in the CLC Bookstore prior to class. Visit www.clcillinois.edu/bookstore.

Students age 14-17 may register through the Explore or Engage Programs for language classes and attend with a registered parent or authorized adult. Call (847) 543-2980 for information or help with registration.

FRENCH 1

The beauty of the French language will come alive for you. This course will cover basic grammar, vocabulary, pronunciation and conversation. The course is designed for those who have never studied French or who have had limited exposure to the language. Textbook required.

7595 CLNG 20-001

Wednesday, February 19 to April 1
4-6 p.m.
6 Sessions
Grayslake Campus, TBA
\$125 A. Meny

ITALIAN 1

This is an introduction to the Italian language and culture using simple conversational patterns and phrases. Students will learn basic Italian vocabulary and phrases to deal with everyday situations. The course is designed to help a beginning Italian speaker converse comfortably. Textbook required.

7592 CLNG 15-001

Wednesday, May 13 to June 17
6-8 p.m.
6 Sessions
Grayslake Campus, TBA
\$125 S. Sette

More language classes available online!

- Conversational Japanese
- Discover Sign Language

Visit www.ed2go.com/clc for a complete list and to register. See page 45 for details.

SPANISH 1

This is a fun and interactive class. The primary focus will be on comprehension and production of the spoken language through the introduction of an active vocabulary, basic grammatical structures, idioms, functional and culturally authentic communicative activities and dialogues. Textbook required.

7593 CLNG 2-001

Tuesday, February 4 to March 10
6:30-9 p.m.
6 Sessions
Grayslake Campus, TBA
\$125 L. Nelson

7594 CLNG 2-021

Monday, February 3 to March 9
6:30-9 p.m.
6 Sessions
Southlake Campus, R024
\$125 L. Nelson

SPANISH 2

This course will help you acquire a good working knowledge of the present indicative Spanish verb tense allowing you to understand and make yourself understood in everyday situations. The emphasis will be on comprehension and production of the spoken language through the introduction of communicative activities and dialogues. Textbook required. **Prerequisite:** Spanish 1 or previous Spanish language experience.

7596 CLNG 3-001

Tuesday, March 31 to May 5
6:30-9 p.m.
6 Sessions
Grayslake Campus, TBA
\$125 L. Nelson

7597 CLNG 3-021

Monday, March 30 to May 4
6:30-9 p.m.
6 Sessions
Southlake Campus, R024
\$125 L. Nelson



Discovery: World Religions



INTRODUCTION TO WORLD RELIGIONS

These two sessions introduce eight statements that enable a person to better understand religious terminology and methods for examining world religions, including one's own religion. Topics include concepts such as metaphor as religious language, religious mystery versus religious truth and many other concepts.

7599 CDIS 56-011

Wednesday, March 4-11
6:30-8:30 p.m.
2 Sessions
Lakeshore Campus, TBA
\$40 J. Leitner

BUDDHISM: NOBLE TRUTHS AND EIGHTFOLD PATHS

Buddhism, originally called the Middle Way, dates back to 2500 years ago. At age 35, Buddha abandoned the Hinduism of his birth and found release from life's sufferings in the Four Noble Truths and the Noble Eightfold Path. Join Jerrol Leitner for two sessions and

deepen your understanding of Buddhism and its place in American spirituality.

7603 CDIS 76-001

Tuesday, March 3-10
1-3 p.m.
2 Sessions
Southlake Campus, R024
\$40 J. Leitner

ROBERT FROST: POET AS PREACHER

Robert Frost, America's favorite 20th century poet, presented himself as everyone's amiable grandfather, bristly but cuddly. In reality, his poetry searched life's dark and uncertain corners. Beneath the surface lay a mind questioning God, relationships and the meaning of it all. The session will examine Frost's life, his craft and several of his most important poems.

7604 CDIS 77-001

Tuesday, April 21
1-3p.m.
1 Session
Southlake Campus, R024
\$20 J. Leitner

Discovery: Writing

LEAP WRITE IN! 1 - THE FIRST WRITING PORTS OF CALL

Goodbye, writer's block. Hello, creativity and inspiration. Using a variety of prompts stretch and surprise your mind. Write seven-line stories, short-winded poems, mini-memoirs and untie-your-mind word lists, along with a variety of other exercises that will unleash what you most need to say. Create your own portfolio to be shared, or not, with friends and family at the end of the six week session. So take a breath, relax, reset and leap write in!

7618 CWRT 15-001

Saturday, March 7 to April 18
10 a.m. to 12 p.m.
6 Sessions
Grayslake Campus, T323
\$125 D. Di Verde

LEAP WRITE IN, AGAIN! NEW CREATIVE WRITING PORTS OF CALL

If you enjoyed navigating around the first Leap Write In course, you'll enjoy finding even more writing ports in Leap Write In, Again! Delve into found poems, bubbles of flavors, tastes and scents and the lyric essay. Continue playing with the beautiful written pieces you started in the first workshop. Let's drop deeper and uncover more of your one-of-a-kind voice. **Prerequisite:** Leap Write In! 1.

7617 CWRT 36-021

Saturday, January 25 to February 29
10 a.m. to 12 p.m.
6 Sessions
Southlake Campus, V232
\$125 D. Di Verde

More writing classes available online!

- Write Fiction Like a Pro
- Introduction to Screenwriting

Visit www.ed2go.com/clc for a complete list and to register. See page 45 for details.

Steps to Apply, Register and Pay for Noncredit Courses

1. Apply for Admission

- Students who wish to take a Professional Development or Personal Enrichment course need a CLC student ID prior to registering.
- To get your CLC ID, please complete the Student Admission Form at www.clcillinois.edu/apply
- When your application has been processed (usually within one business day), you will be given a CLC myLogin username and temporary password as part of the admission process. If you provided an email address on your application your username and password will be emailed to you in two separate emails. All new students will also receive an official admission letter with their login information via U.S. mail.
- Once you have your username and temporary password, you can set up myLogin.
- If you need login help, contact the ITS Service Desk at www.clcillinois.edu/helpdesk or call (847) 543-HELP (4357).

2. Steps to Register Online

- If you already have your CLC ID, you may register online through the myCLC student portal. After entering your login, select the "Student Center" option to be taken to the student registration system.
- At myCLC Student Portal click on "Search for Classes."
- Specify the semester and then a subject to view the classes available.
- When you find the specific open class section you want click "Select Class" and add it to your shopping cart.
- Click on "Shopping Cart" check the box next to your selected class and click enroll.
- When you want to add or drop a class, check for a "Success" or "error" message.
- Register for classes at www.clcillinois.edu.
- For more information, visit www.clcillinois.edu/admission.

3. Steps to Register by Phone

- In order to enroll in a noncredit course over the phone, students must have already completed the CLC application and allowed time for processing.
- If information on student account is outdated or invalid, enrollment requests cannot be completed until information is corrected in the system.
- To enroll in a Personal Enrichment course, call (847) 543-2980.
- To enroll in a Professional Development course, call (847) 543-2990.
- Hours of operation for both departments are Monday-Friday, 8 a.m. to 4:30 p.m.

4. Pay Tuition and Fees

- Payment plans are available for noncredit classes.
- Noncredit classes are not eligible for Financial Aid.
- Log into myCLC to view your billing statement and class schedule.
- Paper billing statements are no longer mailed to your home. Email notifications will be sent to your student email once your statement is ready to view on myCLC.
- A billing statement will be sent only on unpaid accounts. It is the responsibility of the student to meet payment deadlines. Again, establishing a payment plan or paying for a class should occur prior to the first day of the class regardless of when the student enrolled in the class.
- Visit www.clcillinois.edu/paying-for-college/how-to-pay for more information.

Withdrawals

- Students who do not attend or do not plan to complete a class they have enrolled to take are responsible for officially dropping the class.
- Students who do not attend or stop attending class, but do not officially drop, will remain responsible for all tuition/fees for the class.
- Tuition and fee refunds will be issued to eligible students based upon the effective date of withdrawal, which is recorded in the system at the time the student drops the class.
- The official deadline for dropping or for withdrawing is defined individually for each class.
- If you find you have been dropped from a noncredit course and you did not request to be dropped, please call the appropriate department for that course (Personal Enrichment or Professional Development).

Refund Schedule

- To check the deadline dates, log on to myCLC and choose "My Class Schedule." When your schedule appears, click on the calendar icon next to the class, and the deadline dates will be displayed. These dates are also displayed in the schedule of classes.
- If you are not sure of the deadlines, please check with the Office of Registrar and Records at (847) 543-2061.

Refunds for Semester-long Classes

- Withdrawal on or before start of class = 100 percent refund
- Withdrawal before 15 percent of class time passes = 100 percent refund
- Withdrawal after 15 percent of class days pass = no refund

Refunds for One-day and "Series" Classes

- Withdrawal the day before class = 100 percent refund*
 - Withdrawal on or after day of class = no refund
- * Exceptions: Due to the nature of some noncredit courses, cancellations with a full refund are only made up to seven business days before the class. After that no refund is possible.

Senior Citizens

All in-district residents who are 60 years of age or older at the time of registration may enroll in vocational credit courses (1.6 vocational credit) offered by Professional Development at one-half the regular tuition rate with all other fees remaining unchanged. The senior citizen waiver does not apply to Personal Enrichment classes.

Room assignment

Please check your schedule for any updates to room assignments by logging in to MyCLC and checking MyStudentCenter prior to the class start date.

Clery Act

The College of Lake County is committed to maintaining a safe and secure educational environment. This report is available on the CLC Police Department website at www.clcillinois.edu/clery.

Save lives with defensive driving

Judicial Services offers opportunities to improve your future and the future of your community through courses, workshops and volunteer opportunities.

Partnering with the 19th Judicial Circuit Court for over 25 years, Judicial Services offers the National Safety Council's award-winning Defensive Driving Courses including the "Alive at 25" program.

Distracted driving is on the rise. Motorists of all levels can benefit from learning defensive driving skills. Register for a course today.

www.clcillinois.edu/judicial

(847) 543-2185 (courses)

(847) 543-2100 (volunteering)

judicialservices@clcillinois.edu

"I just missed being killed by about three seconds."

– Christine Burke praising CLC's defensive driving course.

Christine Burke of Lake Barrington enrolled in our Defensive Driving Course. While driving less than a week later, she used a lesson from the course to narrowly avoid getting smashed broadside by a car that ran a red light.

Burke said that she hesitated at the intersection, recalling a tip she learned in the defensive driving course called "delayed acceleration" waiting two or three seconds before entering an intersection if yours is the first car there. She credits this decision with saving her life.





Innovative Learning Solutions

that deliver results

We want to be your training partner to help shape your career or business' future.

With the continually changing work environment, preparing yourself or your organization with proficiencies is a smart strategy. Whether you want to improve your skill set, or you need to train your entire team, we have the expertise to provide a solution.

Multiple training options are available:

- Customized training crafted to meet your organization's specific needs
- Training delivered onsite or at one of our three campuses
- Instructor-led, online or hybrid training

Proud partner in the Lake County Workforce Ecosystem

For more information:

Call: (847) 543-2990

Email: corporatetraining@clcillinois.edu

Visit: www.clcillinois.edu/solutions

College  **Lake County**[™]
Workforce and Professional
Development Institute



FEATURED THIS SPRING

Mindfulness – Refine Your Journey to Transform Your Life

Join noted expert Christine Lopez for four evenings and experience your path to mindfulness via breathing techniques, meditation, guided imagery and yoga. Invest in yourself! Details on page 39.

Italian Regional Cuisine – Cooking and Wine Pairings

Join Chef Vena for a two-night class in learning how to cook authentic Italian dishes paired with the right wines. Your class will be held in the kitchens of Prairie, CLC's student-run restaurant. Hurry, only ten spaces are available for this exceptional opportunity. Find more on page 34.

Find Your Roots

Who are you and from where do you originate? Want to answer those questions and many more? Join CLC's award-winning instructors John and Maria Tenuto for two evenings and explore your past via Ancestry.com, Fold3, newspaper databases, FamilySearch and offline resources such as photographs and interviews. To get started, see page 36.

Dance, Dance, Dance

Get moving and meet new people. Choose from Beginning and Intermediate Ballroom, Social Latin Dancing and Swing Dancing, offered at a variety of times and campuses. Details on page 34.

Google IT Support Professional Certificate

IT Support is one of the fastest growing fields in the United States. This new, innovative program will prepare you for an entry level job in approximately eight months, while giving you the flexibility to work at your own pace. No previous experience with computers is necessary, just a desire to learn. See page 8 for details.

Truck Driver Training

CLC is relaunching a Commercial Drivers License (CDL-A) program at the Lakeshore Campus in Waukegan. During our 160-hour basic training program, students will gain the experience and skills necessary to gain a high demand job in Lake County. More information on page 15.



NEW Online Courses

Imagine starting a new career in Hotel Management, Information Security, Federal Court Interpreting or Pharmaceutical Sales. Our Career Training Programs provide the flexibility to earn dozens of industry-recognized certifications completely online.

Hundreds of short-term courses are also available to update your skills for in-demand careers. All courses are available at www.clcillinois.edu/professional/onlineclasses.

Solutions for Small Business Owners

Explore business solutions and training and find new opportunities for your business to start, grow and succeed. Whether you're starting a new business, positioning for growth or seeking to expand globally, we can help. See page 21 for more information.

Innovative Learning Solutions

Does your company have a unique training need? CLC brings powerful, results-driven training to your organization. Visit www.clcillinois.edu/solutions or call (847) 543-2990 to learn more.



EXPLORE & ENGAGE WITH CLC SUMMER CAMPS

Camps combine fun and
academic enrichment

Explore: STEAM
Grades 1-8

Engage: STEM
Grades 9-12

Registration opens
March 2, 2020

(847) 543-2980
CPEinfo@clcillinois.edu
www.clcillinois.edu/summercamps

GRAYSLAKE CAMPUS
19351 W. Washington St.

LAKESHORE CAMPUS
(WAUKEGAN)
33 N. Genesee St.

SOUTHLAKE CAMPUS
(VERNON HILLS)
1120 S. Milwaukee Ave.

ONLINE
www.clcillinois.edu/online

(847) 543-2615

ECRWSS

RESIDENTIAL CUSTOMER

TRANSFORM LAKE COUNTY

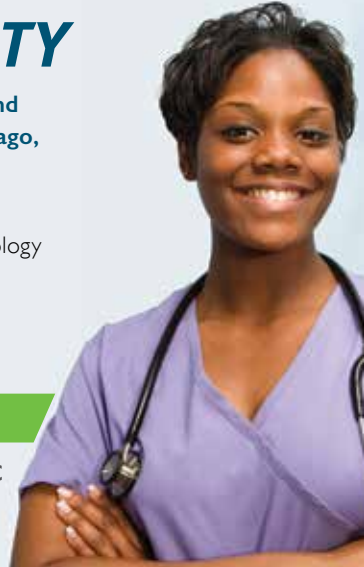
\$1.5M for full scholarships in short-term programs for in-demand careers available to students in the communities of North Chicago, Waukegan, Round Lake and Zion in the fields of:

- Auto collision repair
 - Certified nursing assistant
 - Dental assistant
 - Forklift operator
 - Healthcare office assistant
 - HVAC
 - Office management & technology
 - Phlebotomy
 - Truck driving
- Fall registration opens March 9*

ACT NOW! SPRING CLASSES START JAN. 21

info@clcillinois.edu | (847) 543-2090 | www.clcillinois.edu/TLC

A workforce equity initiative funded by the Illinois Community College Board and the Illinois Legislative Black Caucus



50TH ANNIVERSARY OF COLLEGE OF LAKE COUNTY

SALUTE TO GOSPEL MUSIC CONCERT

SATURDAY, FEBRUARY 29 AT 7 P.M.

Genesee Theatre, Waukegan, IL



Featuring
Multi-Grammy award-winner
Bishop Hezekiah Walker
and the Love Fellowship Crusade Choir

TICKETS:

50th Anniversary
Special Price: 5 for \$50

Purchase tickets at:
CLC's Campus Stores, JLC Box Office
Call (847) 543-2300
www.clcillinois.edu/tickets

Ticket prices: \$28 general admission
\$26 for seniors 65+ & CLC students/staff/children

"Day-of" Tickets: \$33 at Genesee
Theatre only (additional fees may apply)



Schedule subject to change. Online version has most current information. www.clcillinois.edu.

In providing educational programs and opportunities, the College of Lake County is committed to maintaining an environment free from harassment and discrimination and will not discriminate on the basis of race, color, age, sex, national origin, physical or mental disability, religion, sexual orientation, gender identity or expression, marital status, military status, political affiliation, ancestry, citizenship, pregnancy, or any other status as protected by law. Inquiries regarding the College's non-discrimination policy and related procedures may be directed to: Allena Barbato, Title IX Coordinator, Room B205, 19351 W. Washington St. Grayslake, IL 60030, (847) 543-2464.