

ROBINA CAMPUS SUPPORT FOR UNDERREPRESENTED GROUPS

TAFE Queensland Scholarship applications are now open. Scholarships awarded in this round are for study in Semester 1, 2024. Applications close midnight 29 September 2023.

TAFE Queensland Scholarship Program

Since its launch in 2015, the TAFE Queensland Scholarship Program has awarded over \$2.6 million to help hundreds of Queenslanders pursue their career goals. Each year 100 x \$5,000 scholarships are awarded to people looking to change their lives and build lifelong careers. Scholarships can be used to pay for study-related costs such as course fees, travel expenses, childcare, uniforms, tools, books and other study materials.

There are two main types of scholarships available:

Access and equity scholarships



These scholarships are awarded to students who can demonstrate a genuine interest and commitment to their chosen career and identify with one of the following cohorts:

- Aboriginal or Torres Strait Islander
- significant caring responsibilities
- people with disability, long-term medical conditions or illnesses
- long-term unemployed (longer than 6 months)
- sole parent
- experiencing significant financial difficulties or social barriers to study
- another specified disadvantage.

Merit scholarships



Merit scholarships are aimed at supporting people who have demonstrated strong levels of achievement to advance their careers.

These scholarships are awarded to students who can demonstrate:

- outstanding academic merit or strong work performance in their field of study AND
- a clear desire to secure ongoing employment in their chosen industry.

Disability services

Disability support workers provide support to individuals to achieve greater levels of independence, self-reliance, community participation, and wellbeing. Develop job-ready skills to work in both community settings and clients' homes.



Study disability services

Demand for skilled workers in all facets of the community services industry is growing. Specifically, the introduction of the National Disability Insurance Scheme (NDIS) is driving demand for person-centred support. According to the Australian Government's Job Outlook service, the number of people working in community and welfare support is expected to grow strongly with around 30,000 job openings anticipated over the next five years.

At TAFE Queensland we offer a range of courses in disability support, from skill sets through to certificate IV qualifications. You can learn how to listen to and support people with a disability, co-design plans to provide individualised support, use professional communication skills, and work safely across various settings.

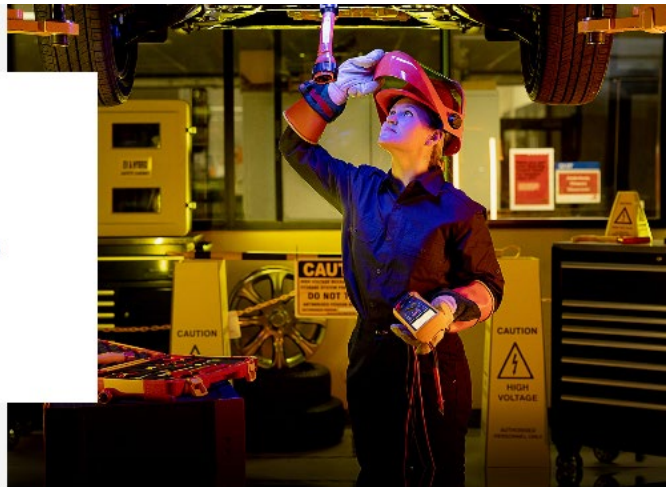
Our specialised and highly-skilled teachers will give you one-on-one guidance and valuable insight into working to support people with a disability to help them meet their goals.

Career outcomes

- Care service team leader
- Disability officer
- Disability support team leader
- Disability support worker
- NDIS support worker
- Volunteer coordinator

Women in trades

At TAFE Queensland we're passionate about encouraging and empowering more girls and women to consider pursuing a trade pathway.



Women seeking broader job opportunities, stable employment and hands-on careers are taking up apprenticeships and helping to fill a number of skills shortages.

TAFE Queensland is proud to work with government, industry and employers to support a pipeline of talented women and girls into careers in male-dominated trade industries.



Read about our tradie trailblazers

Information for Aboriginal and Torres Strait Islander people

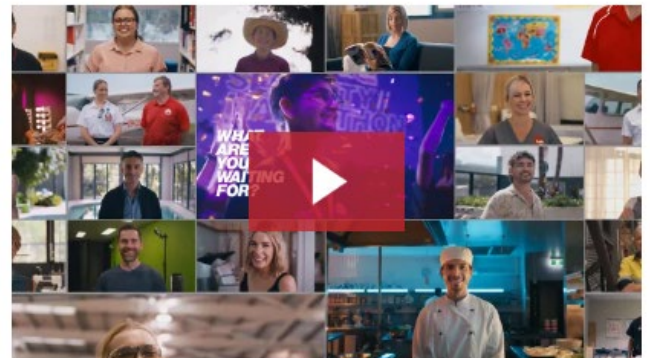
Unlock your potential at TAFE Queensland with courses and services specifically designed to support Aboriginal and Torres Strait Islander students.



About TAFE Queensland


With dedicated Indigenous student support, specialised 'away from base' residential block training, and our partnership in the RATEP, TAFE Queensland is well suited to help you reach your education goals.

[Learn more](#)



TAFE QUEENSLAND

First Nations Employee Initiatives

 **WONG, Jodie**
Deputy Chief Human Resources Officer

Published 29/06/2023

At TAFE Queensland we value diversity within our workforce. Through our Reconciliation Action Plan (RAP) we committed to the development of a **First Nations Employment Strategy** to ensure we continue to attract and retain First Nations people to our workforce.

The Strategic HR Projects team in collaboration with a working group of volunteers across the state has developed a comprehensive strategy for TAFE Queensland. This strategy seeks to support the aspirations and futures of Aboriginal and Torres Strait Islander peoples through recruitment, professional development activities, building career pathways and a culturally safe workplace for all employees.


Thank you to everyone who contributed to the development of this strategy through the provision of feedback and suggestions.


The [strategy](#) is now available and will be implemented over the coming months.


First Nations Employee Network


The First Nations Employee Network is a new network that offers a forum for First Nations employees across all regions to connect and collaborate in a shared and safe environment.


More information is available [here](#).

 NAIDOC Week 2023

 Aboriginal and Torres Strait Islander Career Pathways Service

 First Nations Employee Network

 First Nations Employment Strategy

 Reconciliation Action Plan

Student support services

Everyone's journey is different and sometimes you need some extra support. We're here to help. Our student support services are available for all of our students, making your learning experience just that little bit easier.



Learning support

Learning support is available for all TAFE Queensland students.

Access help for:

- assignments, essay writing and referencing
- study skills and exam preparation
- English and maths
- time management and organisation skills.

Class support, workshops and tutorials may also be provided at different locations.

[Enquire now](#)

LEAP to a successful student journey

At TAFE Queensland it is important that you Learn, Engage, Access and Progress (LEAP) through your studies.

LEAP is designed to support students to prepare for, engage with, and achieve success with their study at TAFE Queensland, while self-monitoring their progress, support needs, and mental health and wellbeing.

[Read more](#)

SUPPORT SERVICES

Everybody's journey is different and sometimes you need some extra support. We offer a range of support services for students with a strong focus on learning and educational assistance to enable successful completion of your studies.



Disability Support

Disability support is available which may include individualised planning and advice to help you succeed in your studies. This support may include identifying specialised equipment, access to assistance and teacher liaison.



Learning Skills

Provided by specialised teachers, get support in exam preparation, assignment writing, time management, making presentations, study skills, language, literacy and numeracy support and general study skills.



Facilities

All campuses are either located within walking distance to food and beverage outlets or have an on-site cafeteria. Our campuses are close to public transport or parking is available for no or minimal charge.



Employment Officer

We have an employment expert who can help match you to a job opportunity as they become available. The position works closely with our other student services to help guide and support you as you seek employment.



Library

You will have access to a range of online and hard copy resources at our libraries located at our Ashmore, Coomera and Southport campuses.



Career Café

Held each year, the session will give you the opportunity to meet with Universities, Defence and the Police Service and major employers to discuss your next steps in education and employment.



Internet/WiFi

You will have access to TAFE Queensland's WiFi and student computers with internet access across all of our campuses.



Student Counselling

Free and confidential counselling is available to assist and support you with career guidance and personal, study or work-related issues.



Online Support

Access to TAFE Queensland learning support and resources including Studiosity. Through Studiosity, you can chat online to expert tutors who can help you with your studies. Studiosity is available for students studying qualifications certificate III and above.



Indigenous Student Support

An Indigenous Student Support Officer is available to assist you and support you during your studies.

Equity and Diversity



KISSANE, Vanessa
Chief Human Resource Officer

Published 13/04/2023

Inclusion training

TAFE Queensland offers a [range of learning and development opportunities](#) to support employees to build foundation skills and knowledge to contribute to diverse and inclusive working and learning environments.

Equity and diversity data

TAFE Queensland collects diversity information that helps us to better understand our workforce and offer the right programs for you.

This data takes less than 5 minutes to complete and you can be confident that your information will be used appropriately and in accordance with the [Information Privacy Act 2009](#).

The information you provide will be used for statistical purposes only and no information identifying you personally will be disclosed to any agency or person.

Even if you believe you have provided your diversity information previously, we ask you to check this information as it may have changed over time.



Inclusion learning and development opportunities



Staff Equity and Diversity Policy



Be Proud! Identify! Update your diversity information today



Reconciliation Action Plan



First Nations Employment Strategy



LGBTQIA+ Initiatives



RUOK Day Representatives

We would like a group of RUOK Day representatives to brainstorm some fun and innovative, simple and meaningful ways to connect with your colleagues and promote the importance of starting a conversation that could change a life.

[Click here to participate](#)