

PLANNING, APPLIED LEARNING AND TECHNOLOGY

| GOLD COAST ROBINA CAMPUS

PROFESSIONAL LEARNING PROGRAM TERM 2, 2022

Goal: Exciting new technologies and contemporary learning spaces are an integral part of delivery at Robina campus. By revisiting the principles of applied learning and sharing successful teaching strategies, participants will experience the technology and teaching spaces from both the learner and Educator perspectives.

Venue: Robina Training Room - Level 2, A Block, Ashmore campus.

Dates / times: To be advised by faculty

FACILITATED

WORKSHOP #1

Duration: 3 hr

Planning; Applied Learning Principles;
Technology; Classroom and breakout
spaces; SDGs; Resources

WORKSHOP #2

Duration: 3 hr

Individual presentations;
reflectons and feedback

1

2

3

4

INDEPENDENT PLANNING

Duration: 0.5 hr

Plan / Create a short delivery using:
SDGs; Technology; ALPs; Resources.

INDEPENDENT PRACTICE

DURATION: n/a

Robina Training Room
open for Educator access

SELF-DIRECTED

8 Applied Learning Principles

Applied learning places equal importance on theory and application, incorporating the teaching of skills and knowledge in the context of 'real life' experiences. Learners apply what they have learnt by doing, experiencing or relating it to the real world.

[VCAA Applied Learning in VCAL](#)



1. LEARNERS

Start where learners are at.



2. NEGOTIATE

Negotiate the curriculum. Engage in a **dialogue** with learners about their curriculum.



3. SHARE KNOWLEDGE

Share knowledge. Recognise the knowledge learners bring to the learning environment



4. CONNECT

Connect with communities and **real-life experiences.**



5. RESILIENCE

Build **resilience, confidence, and self-worth** – consider the whole person.



6. INTEGRATE LEARNING

Integrate learning – the whole task and the whole person. In life we use a range of skills and knowledge. Learning should reflect the integration that occurs in **real life tasks.**



7. EXPERIENTIAL

Promote diversity of learning styles and methods. Everyone learns differently. Accept that different learning styles require different learning/teaching methods. But value **experiential**, practical and 'hands on' ways of **learning.**



8. ASSESS APPROPRIATELY

Assess appropriately. Use the assessment method that **best 'fits'** the learning content and context.

Teaching Strategies



Find out more:

[VCAA Applied Learning in VCAL](#)

[TQ Professional Learning On Demand - Webinars \(Connect\)](#)

[Applied Learning Study Programs \(UTAS\) - SPOT](#)



TAFE QUEENSLAND

ROBINA CAMPUS

BUILDING GLOBAL CITIZENS OF THE FUTURE

Leading the way as a sustainable vocational institution in Australia, our Robina campus ensures that sustainability is embedded into every aspect of campus operations including campus design, course curriculum and student life.

JOIN US IN BUILDING A BETTER FUTURE

In 2015, United Nations world leaders agreed to 17 Global Goals (known as the Sustainable Development Goals or SDGs). The object of these goals is to create a better world, by ending poverty, fighting inequality and addressing the urgency of climate change. Guided by the SDGs, Robina campus is working with students and the Gold Coast community to build a better future for everyone.

The SDGs are a call to action and the Robina campus is committed to working hand-in-hand

with other agencies to improve health and education, reduce inequality, and spur economic growth through a skilled workforce – all the while tackling climate change and working to preserve our oceans and forests. TAFE Queensland is doing this by working alongside our students and the community by building awareness of local and global issues, building sustainability into its operations and course curriculum and by providing experts and advocates the opportunity to speak with staff, students and members of the community.

TAFE Queensland – Robina campus
94 Laver Drive, Robina QLD 4226

1300 308 233 | tafeqld.edu.au



RTO 0275 | CRICOS 03020E | HEP PRV13003
Information correct at time of printing 30. 05. 23



STUDYING AT ROBINA CAMPUS

Every course taught at the Robina campus encourages students to reflect on their commitment to sustainability, question what they are doing, build awareness of global issues and develop the skills required to work in a more sustainable future. Influencing students through course content, campus activities and community interactions, we empower our students to make their unique contribution to the achievement of the Sustainable Development Goals.

The campus is also becoming an integral part of the Robina community with the public invited to use the campus facilities run by students and

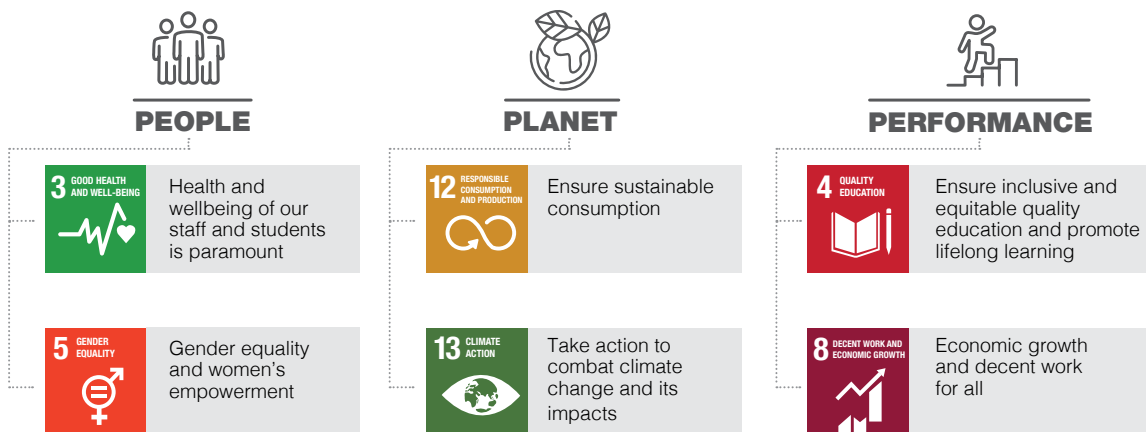
their teachers which include a restaurant, ground floor café, a fitness centre and an impressive conference and event centre.

Each year more than 2,000 students will study beauty, business, cookery, early childhood education, english languages, events, general education, hairdressing, hospitality, sport and fitness, tourism and more.

Robina campus graduates will not only have their qualification but knowledge and commitment to sustainability that will contribute to building global citizens of the future.

SUSTAINABILITY FRAMEWORK

Our sustainability framework is aligned to the United Nations Sustainable Development Goals.



Source: United Nations Sustainable Development Goals www.un.org/sustainabledevelopment/