



National Listing of LGBTQ-Friendly
Colleges & Universities



DONATE

Like 13K

Share

8

Tweet

Login



Register



Quick
Links



My
Bookbag 0

Campus Search

College Prep Resources

FAQs

College Fairs

About Us

Partners

Contact Us



UNIVERSITY OF
WISCONSIN -
GREEN BAY

CAMPUS
PRIDE
INDEX



The Campus Pride Index is an overall
indicator of institutional commitment
to LGBTQ-inclusive policy, program
and practice. [How is this calculated?](#)



I'm Interested!

Add this campus to My
Bookbag

CAMPUS FACTS & FIGURES

🌐 **Region:** Midwest

📍 **City/State:** Green Bay, WI

👤 **Locale:** Medium City (100,000 to 500,000)

👥 **Student Population (FTE):** 6,700

💰 **In-State Tuition:** \$7,758.00

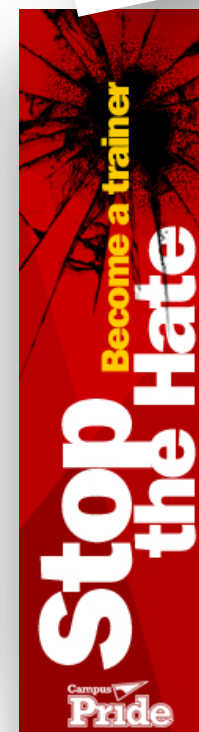
📄 **Out-of-State Tuition:** \$15,330.00

🌐 **Institution Website:**
<http://www.uwgb.edu>



Institution Type:

Master's College/University
Public/State University
Liberal Arts College
Residential Campus



LGBTQ STUDENT OPPORTUNITIES



Colleges and universities want LGBTQ students, faculty and staff to be out and proud as part of the diversity of the campus community. The Campus Pride Index provides campuses the opportunity to come out as LGBTQ-friendly and take responsibility for continually improving their LGBTQ campus climate.

The Campus Pride Index features LGBTQ student opportunities by highlighting the positive work within higher education across the country. Prospective students and families may choose the best LGBTQ campuses searching the tool based on area of study, cost, location, type of campus and LGBTQ-inclusive policy, programs and practice for their college search.

Reminder: Learn more by signing-up for FREE to participate in Campus Pride's LGBTQ-friendly National College Fair Program in eight different cities and the [Campus Pride National Online College Fair](#).

[Login](#)

[Register](#)

[Quick Links](#)

[My Bookbag](#) 0


HIGHLIGHTS & ORGANIZATIONS

Upcoming events

9/7/2017

UWGB Pride Center Open House

3/28/2018

Inclusivity Health Fair and Art Show

3/30/2017

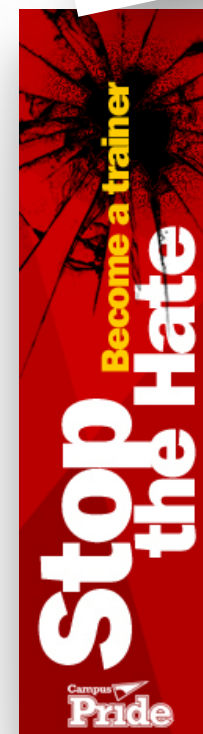
Robyn Ochs

4/26/2018

Lavender Graduation

Groups & activities

Pride Center





Admissions Office

University of Wisconsin - Green Bay Admissions Office

Office of Admission
University of Wisconsin - Green Bay
UWGB, 2420 Nicolet Drive,

Green Bay, WI 54311

Phone: 920-465-2111

Website: <http://www.uwgb.edu/admissions/>

Admission Application Deadline:
<http://www.uwgb.edu/admissions>

EMAIL CAMPUS ADMISSIONS



OVERALL CAMPUS PRIDE INDEX SCORE  5 of 5

Login



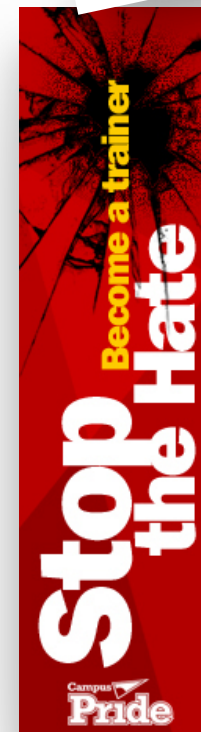
Register



Quick
Links



My
Bookbag 0



The Campus Pride Index has a strong theoretical research foundation in LGBTQ current programs, practices and policies for safer, more inclusive campus learning environments. The index tool has been tested extensively since 2001 and recently updated with new, higher LGBTQ national benchmarks in 2015.

The Campus Pride Index is a vital tool for assisting campuses in learning ways to improve their LGBTQ campus life and ultimately shape the educational experience to be more inclusive, welcoming and respectful of LGBTQ and ally people. The index is owned and operated by Campus Pride, the leading national nonprofit organization for student leaders and campus groups working to create safer, more LGBTQ-Friendly learning environments at colleges and universities. Campus Pride commends the campuses participating in the index and their willingness to come out, be visible and actively advocate for improving higher education for LGBTQ people.



LGBTQ-FRIENDLY REPORT CARD | What You Need to Know

☰ LGBTQ Policy Inclusion

Non-discrimination statement inclusive of sexual orientation	✓
Non-discrimination statement inclusive of gender identity/expression	✓
Health insurance coverage to employees' same sex partner	✓
Accessible, simple process for students to change their name on university records and documents	✓
Accessible, simple process for students to change their gender identity on university records and documents	✓
Students have option to self-identify sexual orientation on admission application or post enrollment forms	✓
Students have option to self-identify gender identity/expression on admission	✓

University of Wisconsin - Green Bay LGBTQ-friendly break-down by factors

Sexual Orientation Score	★★★★★
Gender Identity/Expression Score	★★★★★
☰ LGBTQ Policy Inclusion	★★★★★
🗨️ LGBTQ Support & Institutional Commitment	★★★★★
🎓 LGBTQ Academic Life	★★★★★
👤 LGBTQ Student Life	★★★★★
🏠 LGBTQ Housing & Residence Life	★★★★★
🛡️ LGBTQ Campus Safety	★★★★★
🏥 LGBTQ Counseling & Health	★★★★★
📋 LGBTQ Recruitment & Retention Efforts	★★★★★

Sections greyed out mean the campus does not offer those services

Login

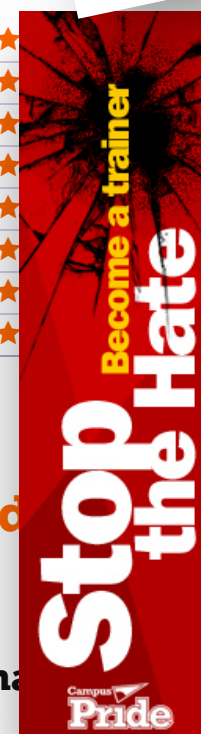
Register

Quick Links

My Bookbag 0

🗨️ LGBTQ Support & Institutional Commitment

Resource center/office with responsibilities for LGBTQ students	✓
Paid staff with responsibilities for LGBTQ support services	✓
Ally program or Safe Space/Safe Zone	✓
Actively seek to employ diversity of faculty & staff including visible, out LGBTQ people	✓
Standing advisory committee that deals with LGBTQ issues	✓
LGBTQ alumni group	



application or post-enrollment forms



LGBTQ Academic Life

LGBTQ studies program



LGBTQ specific course offerings



Actively recruit faculty for LGBTQ-related academic scholarship



New faculty/staff training opportunities on sexual orientation issues



New faculty/staff training opportunities on gender identity issues



LGBTQ faculty/staff organization



LGBTQ Housing & Residence Life

LGBTQ living space, theme floors and/or living-learning community



Roommate matching for LGBTQ students to find LGBTQ-friendly roommate



Gender-inclusive housing for new students



Gender-inclusive housing for returning students



Gender-inclusive/single occupancy restroom facilities in campus housing



Gender-inclusive/single occupancy shower facilities in campus housing



Trains residence life and housing staff at all levels on LGBTQ issues and concerns



LGBTQ Student Life

LGBTQ & Ally student organization

LGBTQ & Ally graduate student organization

LGBTQ social fraternity/sorority

Regularly plans LGBTQ social activities

Regularly plans educational events on transgender issues

Regularly offers educational events surrounding intersectionality
LGBTQ people

LGBTQ-inclusive career services

LGBTQ Campus Safety

Procedure for reporting LGBTQ related bias incidents and hate crimes

Active ongoing training for hate crime prevention

Active outreach to LGBTQ students and student organization

Trains campus police on sexual orientation issues

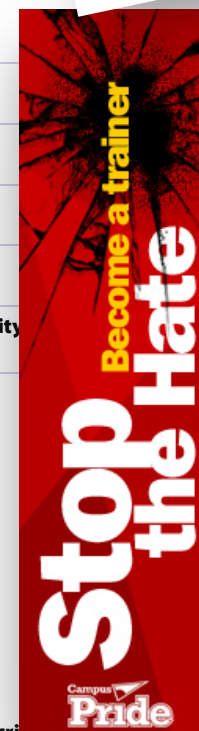
Trains campus police on gender identity/expression issues

Supports victims of LGBTQ sexual violence and partner violence

Login



Register

Quick
LinksMy
Bookbag 0

Login



Register

Quick
LinksMy
Bookbag 0

LGBTQ Counseling & Health

LGBTQ counseling/support groups



Trans-inclusive trained counseling staff



Free, anonymous and accessible HIV/STI testing



LGBTQ-inclusive health information and safer sex materials available



Trans-inclusive student health insurance policy which covers ongoing counseling services



Trans-inclusive student health insurance policy which covers hormone replacement therapy



LGBTQ Recruitment & Retention

Annually participates in LGBTQ admission fairs

LGBTQ student scholarships

LGBTQ mentoring program to welcome and assist LGBTQ students to academic and college life

Special Lavender or Rainbow Graduation ceremony for LGBTQ students

Admission counselors receive LGBTQ-inclusive training and resources



Want to find a campus based on its report card? Search now!



REPORT CARD SEARCH



Tweet

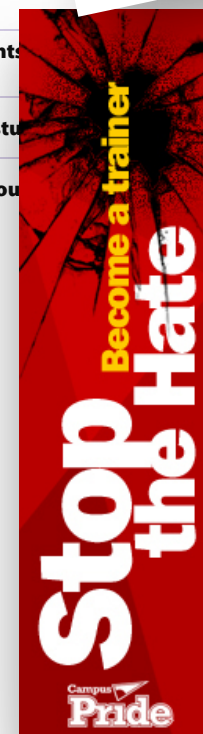


© 2006-2021 Campus Pride. All rights reserved.

Trademarks and logos are the property of Campus Pride.

COMMERCIAL USE OF THE CAMPUS PRIDE INDEX AND ANY FORM OF THE INFORMATION AVAILABLE ON THIS SITE IS NOT ALLOWED. THIS INCLUDES BUT IS NOT LIMITED TO ONLINE WEBSITES, COMPANIES OR OTHERS PROFITING


OUR
Partners





AND/OR GENERATING WEB TRAFFIC USING THE DATA, IN WHOLE OR IN PART, AS CRITERION FOR PART OF A WEB LISTING, RESOURCE OR OTHER PURPOSES. ONLY BUSINESS ENTITIES WITH PRIOR WRITTEN PERMISSION EXPRESSLY BY CAMPUS PRIDE MAY DO SO. FAILURE TO COMPLY WILL RESULT IN LEGAL ACTION.

Use of this Web site constitutes acceptance of the [User Agreement](#) and [Privacy Policy](#)

[Index Search](#) [College Resources](#) [FAQs](#) [College Fairs](#) [Who We Are](#) [Contact](#)

[Login](#)

[Register](#)

[Quick Links](#)

[My Bookbag](#) 0

